



# state Beacon

Volume 30—Number 11

PATERSON STATE COLLEGE

December 16, 1964

## Pres. Shea Honored At Faculty Luncheon

President Marion E. Shea of Paterson State College was honored yesterday by the faculty and administration of the college, who presented her with a gift commemorating her ten-year presidency. The Faculty Association Tea was scheduled to honor President Shea, although that purpose remained unknown to her until she arrived there. Faculty members were given an indication of the purpose of the Tea in the invitations each received earlier this week. The credit given for the cover design, which is dominated by a figure "10" represents the extra special event scheduled for

1:30 P.M. In poetic terms, the invitation reveals that the Association was "planning an extra... the cover story's revealed to you."  
Since President Shea was installed in 1954, Paterson State College has increased to four or five times its original size. There were just 36 faculty members then, serving the 831 stu-

dents of the college. The students were housed in a single classroom building (Hunziker Hall). In 1964, only three curriculums were offered at Paterson State: general elementary, kindergarten-primary, and grades 5-9. In the last ten years, the number of faculty members has

(Continued on page 4)

## Students Foster Community Action

The Social Action Club of Seon Hall University College in Newark wishes to project its purpose throughout all the colleges in the area in order to "effectively and meaningfully use the potential, vigor, and vitality of our college youth." Several Paterson State College students already number as members of the club, whose goal is to turn opinions and ideas into action for the political and social benefit of the community.

They have demonstrated their goal by offering a tutorial and study hall program to boys and girls of the Central Ward, Newark. At inception, the program includes 50 tutors working with 50 children in the fourth to seventh grades. All subjects are tutored four days a week and an evening study hall is maintained. The project will employ visual aids and cultural trips that may be attended by parent, child and tutor. The latter has the opportunity to realize his potential by developing a "social consciousness." The Club also has a Narcotic Branch, has

(Continued on page 4)

## Student To Discuss Summer In England

S.G.A. president Lon Lawson, will discuss his summer in England at an Experiment in International Living program scheduled for Thursday, January 7th, at 1:30 p.m. in W-101. In keeping with the Experiment's purpose of world understanding on a person-to-person basis, Lon will center his discussion around the people he met abroad.

A nine-day orientation cruise began when Lon and other American students left New York City on June 18th. After his arrival in England, Lon became a temporary member of the Morris family living in Southport, located about five miles from Liverpool. Besides his English mother and father, Lon's family consisted of a 17 year-old brother and two sisters aged 13 and 14. After his homestay of a month, Lon spent some time traveling around the country in connection with the Experiment program. He spent three days at Stratford-on-Avon, then celebrating the Shakespearean festival and also spent a week on the Welsh Coast. Before coming home, Lon spent a week of sight seeing in London.

Commenting on his summer, Lon remarked that "England is often regarded by Americans as being very similar to the United States. It is, however, a country

with a long history with a distinct culture and tradition." Lon found the English to be a very "friendly" people.

This program is the third in a series of programs presented by the four P.S.C. college ambassadors who spent their summer abroad under the auspices of the Experiment in International Living program. The purpose of the program is to have Americans serve as ambassadors by representing the United States overseas. The emphasis of the program is on the individual level, believing that it is in this area that understanding, both of America and the host country, can best be achieved. Each year, the Stu-

(Continued on page 4)

## President's Message

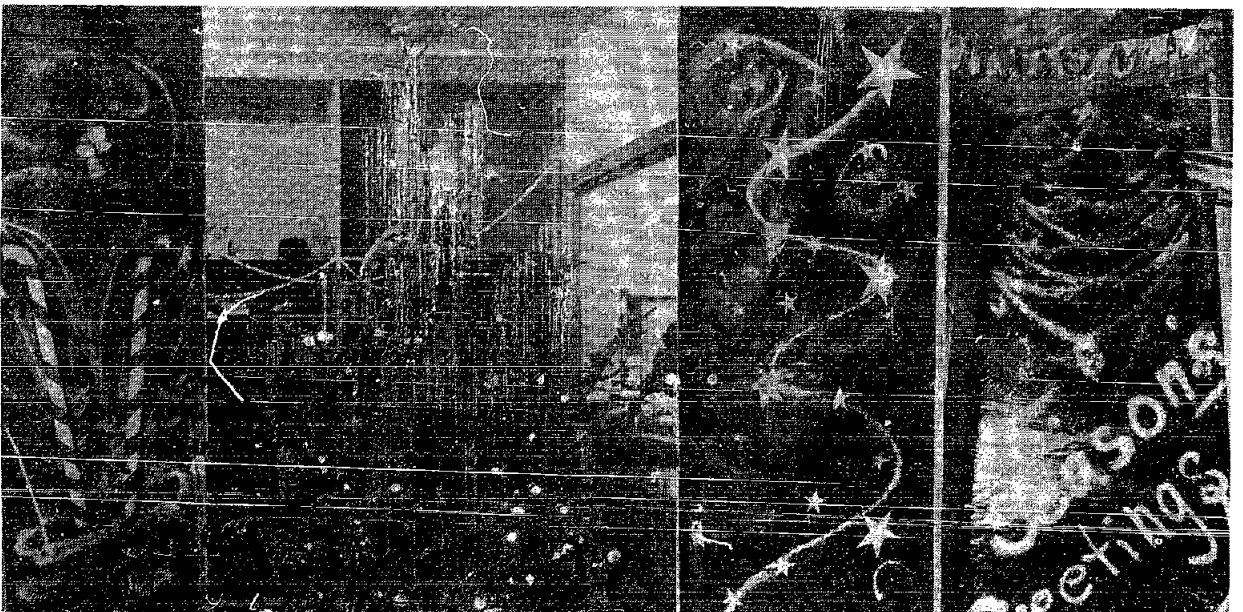
We have reached that time of year when we begin to feel and sense the spirit of Christmas and the high holy days. It is a time to pause and to remind ourselves of an ancient mystery and an oft-repeated promise "on earth peace, good will toward men." It is a time to open our hearts to others, to make our annual gift-giving one in which the giver gives himself.

My message to you in this year of 1964 is an appeal for a return to the verities of Christmas, to a strengthening of moral and spiritual values, to an idealism which seeks to secure something better than we have, to honesty and sincerity in all our thoughts and deeds, to a reaching out beyond ourselves, to a strengthening of the inner fiber of man.

And it is a time for celebration, too. So, chime the bells, deck the trees, spread the feast, carol the Yuletide on the frosty air. Make merry; raise your voices high for this Christmas season is a joyous one—one to be celebrated with a "Merry Christmas" and the hope of a bright and sparkling New Year.

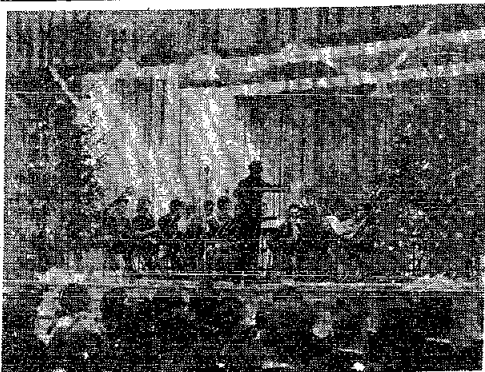
May the loveliness and joy of the season sustain you through the coming year.

Marion E. Shea



BEACON PHOTOGRAPHER STEVE MONCHER CAPTURES THE HOLIDAY SPIRIT in evidence at the College Center. At the left is the Student Government Association door, "Candy Cane Christmas," decorated by Recording Secretary Allison King. The College Center Christmas tree stands dressed in an outfit of silver icicles, snug in a corner of the Snack Bar. Sec-

ond picture from the right is the BEACON door, "Yuletide Milky Way," designed by News Editor Cathleen Sain. The door at the right proclaims "Season's Greetings," and is the office of Dr. Halliwell and Mr. Spinoza, professors of education, and was decorated by Nancy Mader, Wilma Donkersoort, and Jill Gardner.



THE PSC CONCERT BAND, DIRECTED BY DR. MARTIN KRIVIN, associate professor of music, performs at the annual "Christmas Music" concert held on Tuesday, December 15, in Memorial Gymnasium. Also performing at concert were the Women's Choral Ensemble, the Chansonettes, and the A Capella Choir.

..... BARBY DOLLS, U-2  
SPY PLANES, KEN  
DOLLS, CIVIL WAR  
GAMES, 2000 OUTFITS  
FOR BARBY AND KEN,  
RUDOLPH'S A MOVIE STAR....  
YES, IT WILL BE A  
NICE "OLD FASHIONED"  
CHRISTMAS



## STATE BEACON

Published weekly during fall and spring terms by the Student Government Association of Paterson State College, 30 Fremont Road, Wayne, N. J. The STATE BEACON, with editorial offices in the College Center, campus, is supported through SGA appropriation and advertising. Content of the newspaper represents the judgment of the staff, acting in accord with the STATE BEACON Constitution, and does not necessarily represent the judgment or beliefs of the S.G.A., Paterson State College, or the State of New Jersey.

EDITOR MARY ANN CORRADINO  
NEWS EDITOR CATHLEEN ZAIN  
ASSISTANT NEWS EDITOR JOANN GRECO  
FEATURES EDITOR TONY TERREI  
SPORTS EDITOR GUYT DONALDSON  
ASSISTANT SPORTS EDITOR RON HOFFMAN  
PHOTOGRAPHER STEVE MONCHER  
ASSISTANT PHOTOGRAPHER PAT MONTROSE  
BUSINESS MANAGER DOUG BRYAN  
CARTOONIST LESLIE OMELIANUK  
ADVISORY EDITOR AL PEDI  
FACULTY ADVISOR GRACE SCULLY  
STAFF ANNABELLE LEE, JAMIE COX,  
CAROL GRAZIOLA, PAT BATCLIFFE,  
CHARLES THOMAS, SALLY MAC DONALD.

**CORRECTION**  
Dr. Charles DeShaw, Chairman of the Physical Education Department, has made a correction regarding student admission policies to basketball games away from campus. Students are admitted FREE - OF - CHARGE with the presentation of their I.D. cards at all away CONFERENCE games. For the 1965-66 season, students will also be admitted free-of-charge at Newark College of Engineering.

## Letters To The Editor

Contributions to this column are the opinions of the readers and as such, are unsolicited. All letters are required to be of a standard that will reflect the best interests of the college. Anonymous letters will not be printed but names will be withheld on request. The Beacon reserves the right to edit all letters.

Dear Editor:

It is with great pleasure that we invite your college to help Glamor Magazine find the "Ten Best Dressed College Girls for 1965."

Many of you are familiar with the contest, now in its ninth year, but here, briefly, is how it works: each college on campus, photographs her the best dressed girl in three outfits, then submits the photographs and an official entry form to Glamor for the national judging.

We hope, through the contest, to show college women that the development of good taste and good grooming is an integral part of an education that results in a well-rounded mind. We respect and are looking for an intelligent, imaginative approach to one's appearance—not an extensive or costly wardrobe. We value the young woman who enjoys her looks without being preoccupied with them.

The young women selected as Glamor's 1965 "Ten Best Dressed College Girls" will be photographed for the August College Issue and will visit New York in June as our guests. In addition, a group of honorable mention winners will be chosen to appear in a fall issue of Glamor.

To help us find these outstanding young women we are turning to you and to hundreds of other colleges throughout the United States and Canada. All you have to do is select the best dressed girl on your campus. The on-campus competition is simple to run—and it's fun. We will send you the 1965 contest kit containing suggestions on how to run the contest, a full list of exciting prizes and the official entry form. Our deadline for receiving your entry is March 8.

Sincerely,  
Lucia D. Carpenter  
Contest Editor

Editor's note: The BEACON and the CGA are willing to sponsor such a contest if response from the student body is encouraging. Any opinion from members of the college will be welcomed by both organizations.

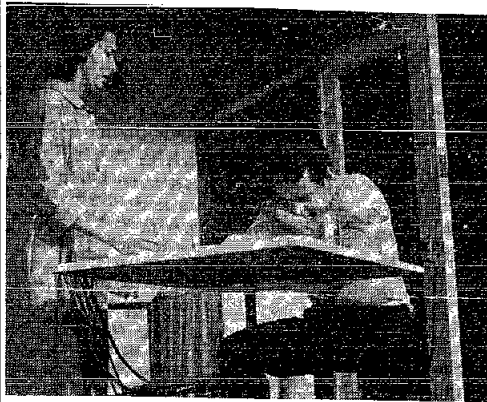
## WEEKLY CALENDAR OF EVENTS

Monday, December 28	WRA Ski Party	Dalos, N.Y.
Tuesday, December 29	7:00 Dist. 31, NAIA Tourney Basketball N. C. E. Pratt Institute Newark Rutgers Paterson State College	Gym
Wednesday, December 30	7:00 Dist. 31, NAIA Tourney Basketball N. C. E. Pratt Institute Newark Rutgers Paterson State College	Gym
Monday, January 4, 1965	8:30 Christmas Recess Ends 4:30 Bowling—WRA	T-Bowl
Tuesday, January 5	1:30 Intramurals, Men Coronation Ball Comm. Chansonettes Choir Women's Choral SGA Council WRA Exec. Comm. Radiation Workshop Essence Assembly Comm. 4:30 WRA Activities, Basketball Modern Dance 7:00 Play Rehearsal	Gym A, B W-11 H-110 H-101, 104 H-109 W-101 CC Conf. W-239 W-16 W-103 Gym Stage LT
Wednesday, January 6	6:30 Basketball T. S. C. 7:30 English Club Film, Orpheus, French	Home W-101
Thursday, January 7	1:30 AV Comm. Coronation Ball Comm. Pioneer Players Exp. in International Living, England, Lon Lawson WRA Activities, Badminton and Rec. Act. Intramurals, Men Chansonettes Choir Women's Choral Modern Dance Nat'l Hist. Club SGA Exec. Comm. International Relations Club ACE Wind Ensemble Citizenship Club SEA English Club Library Comm. 4:30 WRA—Activities, Basketball SGA Exec. Comm. 7:00 Play Rehearsal	W-107 W-11 LT W-101 Gym A H-110 H-110 H-101, 104 H-109 Gym Stage W-232 CC Conf. H-204 H-205 LT W-7 W-4 H-202 L-1 Gym LT
Friday, January 8	9:00 Senior Interviews	HH conf. 1, 2
Saturday, January 9	2:00 Men's Fencing—Pace College 6:30 Basketball G. S. C.	Gym Away
Sunday, January 10	All Day—AFLA Fencing Competitions 2:00 Met. Interc. Bowling	Gym Away

## SEASON'S GREETINGS

From The  
Student Government  
Association

Your  
New York Life  
Agent At  
**PATERSON STATE**  
is  
**VITO B. ZINZI**  
Agent  
**NEW YORK LIFE**  
INSURANCE COMPANY  
• Life Insurance • Group Insurance  
• Pension Plans • Annuities  
• Health Insurance  
Box 415, Hackensack, N. J.  
HU 9-2900



A TENSE MOMENT BETWEEN Cecilia, played by Joan Gamborale, and Polo, played by Jerry Rutigliano, from "A Hatful of Rain" now being presented at The New Dimension Theatre in Englewood.

# Legitimate Theater Comes To Englewood

by Dotti Donaldson

For those people looking for a nearby representation of the legitimate theater the answer may be found at the New Dimension Theatre located in Englewood. Last Saturday evening, Beacon editor, Mary Ann Corradino and myself had the pleasure, and I do mean pleasure, of attending the production "A Hatful of Rain" by Michael Gazzo.

The atmosphere is intimate, involving the audience in the play's situation and the actors' plight. The theater itself, located at 6 James Street, is not

of traditional character, but maintains the simplicity of a converted loft. The scenery is also simple with no curtain, but very effective lighting and background music gives support to the professional production.

While speaking with the director, Richard A. Imundo, we found that for the past two years he has been trying to bring the legitimate theater to those who find traveling to

New York difficult. Those who appeared in the production are nearly all from local towns with two others residing in New York City.

Joe Lionetti, from New Milford, plays the hopelessly addicted junky to such a degree that we actually believed he might be an addict. Joan Gamborale, the pregnant wife who is convinced that her husband's frequent absences mean he is seeing another woman, plays the part most convincingly. Jerry Rutigliano, also of New Milford, portrays the good-natured brother ready to help Johnny pay off the pusher.

Robert Martin, Anthony Mosconi and George Ruiz interpret the characters of the pusher, Mother, and his followers very well, giving the audience a realistic picture of the results drug addiction can produce. Edward Thom of Englewood is cast as the impersonal father who misunderstands his sons and chooses the life of a spend-thrift speculator. Robert Bonnard and Renee Blank are cast as the strong arm men for the pushers and a wealthy heiress also addicted to dope.

Tense moments in the play bring the audience closer to the characters. Speaking for myself, I could have gotten up and shook some sense into Johnny and Polo's father quite a few times. These scenes bring out the tremendous impact on the family and obviously causes empathy in the audience.

For both of us it was an entirely new experience relating to the theater and we feel that everyone should have the opportunity to see this work shop in action. Mr. Imundo mentioned that the group was seeking new members as well as sponsors to take an active part. It is not necessary to be a member of the group to take part in the productions however, since the readings are open to anyone. To encourage student support the workshop has provided for a 50 percent discount on tickets. Students need only show their I.D. cards at the box office.

The current production will be presented only until December 19, but many others will follow.

The Student Faculty Relations Committee has a mailbox just off the Octagonal Room of the College Center for communication with the Committee. Suggestions and problems to be submitted in the Committee should be deposited in the box.

All students who are requesting deferred payments for tuition for the spring semester must make the necessary request with Mr. John Huber, second floor, College Center, before January 13, 1965. Requests made after this date will not be approved.

## Rules Set For Contest

(A) Preliminary contest is to be held on Tuesday, February 2, 1965 at 1:30 PM and, if necessary, on Thursday, February 4, 1965 at 1:30 P.M. in Wayne Hall, Food Service Building, Dining Halls A,B,C, and D, second floor, for the Preliminary Miss Paterson State College Contest. The Preliminary Contest will be informal. Contestants will appear in professional attire.

(B) If you are successful here, you will be invited to appear in the Final Miss Paterson State College Contest to be held on Saturday, February 13, 1965 at 9:30 P.M. in the Memorial Gymnasium during the Coronation Ball.

- (1) Entrant agrees to abide by all the rules of the Miss Paterson State College Contest now in effect or as announced hereafter.
- (2) Entrant agrees that the time, manner, and method of judging shall be solely with the discretion of the Judges Committee, and that the decision of the Judges will be final.
- (3) Entrant must be single and never have been married.
- (4) Entrant must be a Paterson State College sophomore or junior in good standing.
- (5) Entrant must be of good character; the judges will look for these qualities: poise, personality, intelligence, charm and beauty of face and figure.
- (6) On Saturday, February 13, 1965 each Finalist will speak for about two minutes on one of the attributes that a Miss Paterson State should possess. Dedication, humor, courage, charm, poise, patience, tact, humility, dignity.

The blank may be completed by anyone who is interested in nominating a sophomore or junior woman student for the contest or by a woman student who wishes to submit her own name but the signature must be that of the nominee. This will eliminate the possibility of processing an application which does not have the consent of the person nominated.

### OFFICIAL MISS PATERSON STATE COLLEGE

#### ENTRY BLANK

#### Miss Paterson State College Contest

Name in full ..... Date of Birth ..... Age .....

Address ..... Phone .....

Parent's Name .....

Education of contestant .....

High School ..... Year Graduated .....

Paterson State College Class of ..... Curriculum .....

Statistics .....

Height ..... Color of eyes .....

Weight ..... Color of hair .....

Give some interesting facts about yourself for publicity, including hobbies, clubs, school activities, honors won, etc.

.....

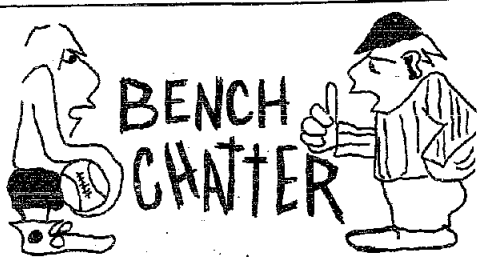
.....

.....

I hereby acknowledge that I have read the official rules and regulations printed to the right of this entry blank and that I am complying with them in every way, and that the personal data as herein set forth is correct.

Signature of contestant .....

- Please note:
- (1) This registration blank must be either typewritten or printed, except for signature.
  - (2) Please attach a small photo to your registration blank.
  - (3) Please cut out this registration blank and return it with a small photo to Dr. Annacone's mailbox, Hunsiker Hall, ground floor, before January 12, 1965, or mail these materials to him at the school address, 360 Pompton Road, Wayne, N.J.



by Tom Terreri

Paterson State will host a Christmas tournament Tuesday, December 29 and Wednesday, December 30. The four team entries includes Pratt Institute of Technology, Newark College of Engineering, Newark Rutgers, and Paterson State College. The first encounter will start at 7:00 p.m. with Pratt tangling with NCE. At 9:00 Paterson will host Newark Rutgers.

It is extremely important the student body come out and support the team. Things have been shaping up, and PSC will be a real threat in this tourney. Our squad has finally found themselves and should reward the school with the victor's trophy. Don't forget, in order to see PSC receive its late Christmas gift, you must be there. (I'll bet you wouldn't miss it for all the world?) I know I wouldn't.

Santa needs another elf. The PSC keglers are shy one human being of the male gender. The team bowls every Sunday afternoon against other college squads. Anyone interested should contact either Coach Wolf or co-captain Marty Margarita immediately.

Ironical as it may seem, this is one of the few opportunities one will get to knock something over for the good of the school.

Oh! before I forget, "Merry Christmas."

## Fencer Takes First In IWFA Tourney

Saturday at Hunter College Arleen Melnick out-fenced a field of fifty-two foilists representing thirteen colleges in the thirty-third annual invitational tournament of the Inter-collegiate Women's Fencing Association. Paterson State's co-captain, Cindy Jones, holder of the invitational title in 1963, finished very creditably in fourth place. Diane Walker, Paterson's third finalist, finished sixth.

Arleen Melnick put down fifteen opponents without a loss in the first three rounds. About half way through the final round she lost her sharpness long enough to drop an essential bout to Loren Kroh of Jersey City, giving the lead to N.Y.U.'s Carol Abbey, seventh ranked American fencer, who was then undefeated in the final round. Minutes later, however, Arleen moved into a possible tie for first by defeating Carol Abbey 4-2. A second loss by Miss Abbey to Barbara Moody of Rutgers gave Arleen a lead which she never surrendered. Carol Abbey placed second and Fairleigh Dickinson's Pat Ford took third.

On Sunday Arleen fenced in the Metropolitan A.F.L.A.'s competition limited to fencers classified in the highest levels, "A" and "B". Arleen, whose classification is only "C" participated by invitation issued to her when she won the Metropolitan "B" competition several weeks ago. Facing only ten opponents, Arleen finished in a three way tie for first with an 8-2 record, and unhappily, her two losses were given by her two opponents in the fence-off, Carol Kuzen of the Salle Santelli and Heid Met-

calf of the N.Y. Fencer's Club. Demonstrating again her ability to meet pressure, Arleen defeated them both. In six competitions so far this season, her record is four firsts and two seconds.

For Arleen these two wins climax a progression beginning in her sophomore year when she placed third in the I.W.F.A. Invitational. A fence-off with Cindy Jones last year gave Arleen a silver medal, and this year's gold medal completes her set.

### Students Foster

(Continued From Page 1)

conducted a program to commemorate Brotherhood week, and has been involved in voter registration.

Members of the Social Action group have proved by their activities that they are attempting to promote the fullness of life by living cooperatively and dedicating themselves to the concept of service.

## Pioneers Drop Fifth, 93-55

Steve Clancy continued to throw in the points for the Pioneers as Paterson State bowed to Monmouth, 93-55. The game marked Paterson's fifth consecutive loss this season. Clancy fired in 24 points in the losing effort. Except for Tom DeStefano's 10 markers, no other Pioneer was able to hit double figures in the scoring column.

Monmouth, now with a 5-2 record had five players in double digits, sparked by Bruce Fishbein's 19 tallies. The Pioneers never went ahead in the game although they were able to stay with the winners for the first few minutes. By halftime the score was 44-29 and Monmouth proceeded to coast through the second half. The far taller Monmouth players dominated the boards throughout the game.

The Pioneers will play Yeshiba on Saturday, December 19th, away at 8:15 p.m.

## Fencers Take Season's First

The Paterson State men's fencing team opened its 1966-1965 season on Thursday night, December 10, with a 16-11 win over Montclair State.

The results of the meet were as follows: In sabre competition, Lon Lawson had a 3-0 record, Tim Szabo had an identical score of 30, and John Cilio was 2-1 for the meet. Foil competition saw Jack Zellner with a 2-0 record, Jim Lawther, with a 1-1 record, Mike Fitzgerald who was 1-2, Bob Dean with a 0-1, and Tom Dierbo with a 0-1 record. In epee, Chat Pilgrim had a 2-1 record, Ed Harrison had a 1-0 record, Scott Dyller had a 1-2 record, and Dennis Austin had a 0-2 score.

On Saturday, December 19, at Drew University, there will be an all-college individual meet. Fencers from all colleges in the State will compete, including N.C.A.A. champion Princeton University. The foilers' next meet of the season will be at home against Pace College on Saturday, January 9.

### Student To

(Continued on Page 11)

dent Government Association of Paterson State sponsors several college ambassadors who visit the country of their choice for a summer-long stay. Further information regarding the Experiment may be obtained from Dr. Marie Yevak, assistant director of student personnel, in Haledon Hall.

## Evangelista Named To All-Star Squad

Mark Evangelista, goalie for the Pioneer soccer team, been named to the first team on the All-Pennsylvania-Jersey-Delaware soccer squad. Players finishing on either the first or second team may possibly be selected for American Honors as representatives from the six states throughout the United States. The All-American Team will be announced by the National Soccer Coaches Association on January 9 at the Manhattan Hotel, New York City.

Evangelista played the goalie position the entire season for the Black and Orange and was the mainstay of the team. Last year he made "honorable mention" goalie in the New Jersey State College Conference while playing in only one-half of the games at that position. In addition to this, he was selected "honorable mention" on the N.J.S.C.C. baseball team in 1964 and is considered promising material by many big-league scouts.

Evangelista and company notched 6 shutout contests during seasonal play. They were: Shelton College 4-0; St. Peter's College 2-0; Newark State College 1-0; Upsala College 1-0; Montclair State College 0-0; and Monmouth College 2-0. At the time of the Montclair game, that team was on a 6-game winning streak and went on to win their next four season contests. Goalie Evangelista was the man responsible for the team's losing only four of eleven games. He handled the ball 174 times and gave up only 12 goals during the season for an average of 1.09 goals per game percentage. He was also the team co-captain for the 1964 season.

## President Shea

(Continued From Page 1)

grown to 168 and the student body has grown to 2207 full-time students. Seven new buildings have been added to the campus in addition to three currently under construction. Thirteen curriculums are now offered at P.S.C. Those ten years have seen a remarkable growth in the college community.

**PIONEERS WIN**

**64-60**

Varsity and J.V. Both

**Win over Hunter**

## WRA Schedule Basketball Season

The Woman's Recreation Association has begun another activity in its season program with basketball every Tuesday Thursday at 4:30 from January 1966 through March 8, 1966.

An intramural program, plus days with other schools, and advanced team to compete with several neighboring colleges been planned for this activity. Miss Rosemaur Leonardo, the advisor of basketball, student chairmen are Alcie Ricicelli and Carol Alm.

The advanced team has scheduled for its 1965 season games:

School	Place	Date
Upsala	Away	Jan. 6
F.D.U.	Away	Feb. 3
F.D.U. (Track)	Away	Feb. 9
Montclair	Home	Feb. 22
Calverton	Away	Feb. 28
F.D.U.	Home	Mar. 4
Upsala	Home	Mar. 18

## Newark Top PSC, 80-74

by Ron Hoffman

The Pioneer basketball team began to jell Friday night. Just couldn't hold off a determined Newark State squad, 80-74.

Steve Clancy, Paterson's amazing scorer, poured in 32 points with Vin Ditta and Tom DeStefano scoring 15 and 12, respectively. This was Paterson's NJSCC opener and while it looked as though it would pull it through. With team playing together, Paterson blazed out to a 15-5 lead to have a balanced Newark team slowly catch up at 20-20 at 6:37 to go in the half, and to the lead for a good minute later on John McVay's layup. Newark State, now in their NJSCC opener is also 2-3, Paterson 0-4 but it won't stay that way long if the team continues playing the way they did in their first half Friday night. The bright spot of the evening was Paterson's J.V. team wallop Newark's J.V.'s 71-56, behind Jim Turners 24-point performance.

Paterson State	Newark State
Clancy 32	Litter 6
Kopcho 10	2/Chincar 6
DeStefano 15	McVay 9
Richardson 3	Sicubius 5
Ditta 6	3/Williams 2
Fells 0	15/Murry 4
Dodds 0	0/Williams 0
Jacsten 2	1/Stanford 1
Nichols 0	5/Connelly 22
	29 16 74