

FINAL EXAMS BEGIN MAY 28

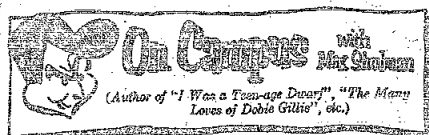
Guest Day

SUNDAY, MAY 19
1:30-4:30 p.m.
Everybody Open
But Hallowed Hall

Letter To The Editor...

I have been very much disturbed by the historical inaccuracy, half truths, and obvious deliberate unfairness to President Shea in news stories, editorials, and letters dealing with the fraternity question in recent issues.

As one who has been involved in various organizations



AMONG MY KINFOLK

My favorite cousin, Mandolin Glebe, a sweet, unspoiled country boy, has just started college. Today I got a letter from him which I will reprint here because I know Mandolin's problems are so much like your own. Mandolin writes:

Dear Mandolin (he thinks my name is Max. I'm too), I see by the college paper that you are writing a column for Marlboro Cigarettes. I think Marlboros are fun-dandy cigarettes with real nice tobacco and a ginger-peachy filter, and I want to tell you why I don't smoke them.



She carried me to a chic French restaurant

Meanwhile this fellow comes around every week to collect the dues, which are \$100, plus a \$10 fine for missing the weekly meeting, plus a \$5 assessment to buy a headstone for Spot, the late, beloved beagle who was the fraternity mascot.

I have never regretted joining the fraternity, because it is my dearest wish to be a BMOG and the envy of all the in crowd, but you can see that it is not cheap. It wouldn't be so bad if I slept at the frat house, but you must agree that I can't sleep at the house if I don't know where the house is.

I have rented a room which is not only grotesquely expensive, but it is not at all the kind of room I was looking for. I wanted someplace reasonably priced, clean, comfortable, and within easy walking distance of classes, the shopping district, and San Francisco and New York. What I found was a bedroom in the home of a local costermonger which is dingy, expensive, and uncomfortable—and I don't even get to use the bed till 7 a.m. when my landlord goes out to mow his costers.

Well anyhow, I got settled and the next thing I did, naturally, was to look for a girl. And I found her. Harriet, her name is, a beautiful creature standing just under seven feet high and weighing 135 pounds. I first spied her leaning against the statue of the Founder, doing lightly. I talked to her for several hours without effect. Only when I mentioned dinner did she stir. Her milky little eyes opened, she raised a brawny arm, seized my nape, and carried me to a chic French restaurant called La Chiquette where she consumed, according to my calculations, her own weight in chateaubriand.

After dinner she lapsed into a torpor from which I could not rouse her, no matter how I tried. I banged my glass with a fork, I pinched her great pendulous jowls, I rubbed the legs of my corduroy pants together. But nothing worked, and finally I slung her over my shoulder and carried her to the girls dorm, slipping several discs in the process.

Fortunately, medical care for students is provided free at the college infirmary. All I had to pay for were a few extras, like X-rays, anesthetics, forceps, hemostats, scalpels, catgut, linen, towels, an incision, and nurses. They would not, however, let me keep the nurses.

So, dear cousin, in lack of funds, not lack of enthusiasm, that is keeping me from Marlboro Cigarettes—don't give Marlboros with their fine blend of choice tobaccos and their pure white Sealocate filter and their soft pack and their flip top box.

Well, I must close now. My pencil is worn out and I can't afford another. Keep 'em flying.

Yr. cousin Mandolin Glebe

© 1938 Max Graham

The hearts of the smokers of Marlboro go out to poor Mandolin—and to poor anyone else who is playing out on our fine cigarettes—available in all 50 of these United States.

of student activities at Paterson State College since 1947, including ten years as advisor to the Student Government Association, I feel that the time has come for me to correct some of the misunderstanding which have been fostered by the Beacon.

First let me say that the policy calling for non-recognition of fraternities and sororities was developed by the faculty as a whole after much study and discussion and was formally adopted by the faculty during the administration of President Wightman. When Dr. Shea became President, she discussed the policy with the faculty and accepted it as college policy because it represented the considered belief of the faculty. On repeated occasions since then she has discussed the question with students. I was present at some of these discussions and remember vividly that the one stumbling block to official recognition of fraternities and sororities was the refusal of students involved to surrender the black ball method of selecting members. For Mr. Albanese to claim that the group he so proudly represents is less discriminatory than the college or Kappa Delta Pi is absurd. Neither race or religion have any bearing on the selection of students and faculty members in either the college or Kappa Delta Pi. The or-

(Continued on Page 2)

Final examinations for all students are scheduled to begin on Tuesday, May 28 and will continue until Wednesday, June 6. Unlike previous years, the examination period has been changed to one-and-a-half hours instead of two-hours. All students are cautioned to be on time.

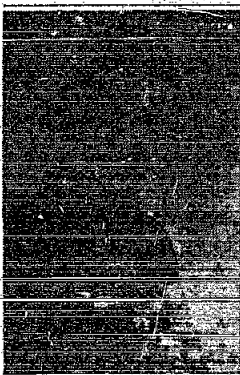
TUESDAY, MAY 28

9:30-10:00 A.M.	Eng. 110-Fundamentals of English.....H109, H110, H202, H204, H205, H208, H207, H205
	Eng. 221-Types of Literature.....H101, H104
	Eng. 310-Literature Arts in The Main School.....W4, W16, W18, W22, W23
	Math. 302-Fundamentals of Geometry.....W4, W16, W18, W22, W23
	Soc. Sci. 375-The Soviet Union.....H101, H104
	Sp. 201-Spanish Conversation.....H101, H104
	Sp. 202-Spanish Development and Correction.....H101, H104
10:30-12:00 P.M.	Art 104-Crafts.....W107, W108
	Art 210-Experiencing Art.....H101, H106, H110, H202
	Art 310-Teacher in School and Community.....H101, H106, H110, H202
	Eng. 425-Remedial Reading.....H104, H109
	Sp. 223-Campylole Reading.....H104, H109
1:00-2:30 P.M.	Art 302-Art in Business and Industry.....H107
	Art 321-Aesthetics.....H108
	Ed. 410-Social Psychology.....H109
	Ed. 416-Organization and Program of the Secondary School.....H101, H104
	Ed. 418-Education of the Exceptional Child.....H101, H104
	Eng. 201-English Literature.....H202
	Eng. 222-English Novel.....H202
	Eng. 223-English Poetry.....H202
	Eng. 224-Journalism.....H204
	Eng. 424-17th Century Poetry.....H204
	S. S. 201-Introduction to Geography.....Gym
	Sp. 302-Reading.....H1
3:00-4:30 P.M.	Art 204-Jewelry and Lapidary.....W108
	Art 205-Figure Drawing.....W102
	Art 321-Aesthetics.....H108
	Ed. 42-Art of the Sciences.....H101, H104
	Ed. 426-Organization and Program of the Junior High School.....H101, H104
	Ed. 428-Audio-Visual Aids to Instruction.....H101, H104
	Ed. 430-Educational Testing and Evaluation.....H101, H104
	Eng. 220-Developmental Reading.....H104, H109
	Eng. 304-Shakespeare.....H202
	Eng. 310-Contemporary British and American Poetry.....H202
	P. S. 202-Modern Dance.....H204
	P. S. 310-Physical Education Activities in the Elementary School.....H204
	Sp. 302-Reading.....H1
	Sp. 321-Advanced Spanish.....H103

WEDNESDAY, MAY 29

9:30-10:00 A.M.	Ed. 421-Introduction to Philosophy.....W111
	Ed. 422-Adolescent Psychology.....H106
	Ed. 423-Introduction to Educational Statistics.....H101, H104
	Math. 401-Introduction to Mathematical Statistics.....W4, W6, W7, W10
	Ed. 403-Instructional Testing and Evaluation.....H101, H104
	Eng. 220-Developmental Reading.....H104, H109
	Eng. 304-Shakespeare.....H202
	Eng. 310-Contemporary British and American Poetry.....H202
	P. S. 202-Modern Dance.....H204
	P. S. 310-Physical Education Activities in the Elementary School.....H204
	Sp. 302-Reading.....H1
	Sp. 321-Advanced Spanish.....H103
10:30-12:00 P.M.	Art 422-Design with Photography.....W107
	Art 423-Advanced Painting.....W102
	Eng. 220-English Literature.....H101, H104, H109, H202, H207
	Eng. 310-Contemporary British and American Poetry.....H202
	Eng. 320-Survey of Drama.....H204, H205, H206, H207

Vol. 28, No. 22 Paterson (N. J.) State College May 17, 1953



RICKY HUMMEL, held yesterday, saw over 125 students, faculty and off-campus contributors donating a pint of blood for the son of faculty member Mrs. Leonore Hummel. Ricky, who is ten years old, is a hemophiliac. This was the second campaign of its type held by Paterson State students. Last year forty-two blood donors answered the call.

Eng. 321-The World Novel.....H110	
Math. 420-Modern College Geometry.....W6	
Ed. 206-Astronomy.....H108	
Ed. 207-Biochemistry.....H108	
S. S. 224-Europe since 1870.....H105	
Sp. 403-Pathology.....H1	
1:00-2:30 P.M.	
Ed. 212-Introduction to Modern Philosophy.....H101, H104	
Eng. 221-American Drama.....H106	
Eng. 222-American Literature.....H104	
Math. 411-Mathematics in Early Childhood Education.....W4, W6, W7	
Ed. 321-Methods of Coaching Team Sports.....H101, H104	
Sol. 101-General Biology.....Gym	
Sol. 401-Conservation.....H209	
Ed. 410-Teaching Elementary School Science.....H108	
3:00-4:30 P.M.	
Ed. 220-Logic.....H101	
Eng. 226-Modern Literature.....H208	
Ed. 227-Social Psychology and First Aid.....H101, H104	
Math. 411-Mathematics in Early Childhood Education.....W4, W6, W7	
Ed. 321-Methods of Coaching Team Sports.....H101, H104	
Sol. 101-General Biology.....Gym	
Sol. 401-Conservation.....H209	
Ed. 410-Teaching Elementary School Science.....H108	
3:00-4:30 P.M.	
Ed. 220-Logic.....H101	
Eng. 226-Modern Literature.....H208	
Ed. 227-Social Psychology and First Aid.....H101, H104	
Math. 411-Mathematics in Early Childhood Education.....W4, W6, W7	
Ed. 321-Methods of Coaching Team Sports.....H101, H104	
Sol. 101-General Biology.....Gym	
Sol. 401-Conservation.....H209	
Ed. 410-Teaching Elementary School Science.....H108	

FRIDAY, MAY 31

9:30-10:00 A.M.	Ed. 401-Development of Educational Thought.....Gym
	S. S. 312-Social Anthropology.....H104
	S. S. 313-Intermediate French.....H104
	Sp. 221-Intermediate Spanish.....H205
10:30-12:00 P.M.	Eng. 412-Improvement of Bendure in the Junior High School.....H104
	S. S. 311-Problems of Contemporary Society.....H106, Gym
1:00-2:30 P.M.	
Art 302-Art in Business and Industry.....H107	
Eng. 220-English Literature.....H101, H104, H109, H202, H207	
Eng. 310-Contemporary British and American Poetry.....H202	
S. S. 312-Intermediate French.....H104	
S. S. 313-Marriage and the Family.....H108	
3:00-4:30 P.M.	
Eng. 110-Fundamentals of English.....H109, H110, H202, H204, H205, H208, H207, H205	
Eng. 221-Types of Literature.....H101, H104	
Eng. 310-Literature Arts in The Main School.....W4, W16, W18, W22, W23	
Math. 302-Fundamentals of Geometry.....W4, W16, W18, W22, W23	
Soc. Sci. 375-The Soviet Union.....H101, H104	
Sp. 201-Spanish Conversation.....H101, H104	
Sp. 202-Spanish Development and Correction.....H101, H104	
10:30-12:00 P.M.	
Art 104-Crafts.....W107, W108	
Art 210-Experiencing Art.....H101, H106, H110, H202	
Art 310-Teacher in School and Community.....H101, H106, H110, H202	
Eng. 425-Remedial Reading.....H104, H109	
Sp. 223-Campylole Reading.....H104, H109	
1:00-2:30 P.M.	
Art 302-Art in Business and Industry.....H107	
Art 321-Aesthetics.....H108	
Ed. 410-Social Psychology.....H109	
Ed. 416-Organization and Program of the Secondary School.....H101, H104	
Ed. 418-Education of the Exceptional Child.....H101, H104	
Eng. 201-English Literature.....H202	
Eng. 222-English Novel.....H202	
Eng. 223-English Poetry.....H202	
Eng. 224-Journalism.....H204	
Eng. 424-17th Century Poetry.....H204	
S. S. 201-Introduction to Geography.....Gym	
Sp. 302-Reading.....H1	
3:00-4:30 P.M.	
Art 204-Jewelry and Lapidary.....W108	
Art 205-Figure Drawing.....W102	
Art 321-Aesthetics.....H108	
Ed. 42-Art of the Sciences.....H101, H104	
Ed. 426-Organization and Program of the Junior High School.....H101, H104	
Ed. 428-Audio-Visual Aids to Instruction.....H101, H104	
Ed. 430-Educational Testing and Evaluation.....H101, H104	
Eng. 220-Developmental Reading.....H104, H109	
Eng. 304-Shakespeare.....H202	
Eng. 310-Contemporary British and American Poetry.....H202	
P. S. 202-Modern Dance.....H204	
P. S. 310-Physical Education Activities in the Elementary School.....H204	
Sp. 302-Reading.....H1	
Sp. 321-Advanced Spanish.....H103	

MONDAY, JUNE 3

9:30-10:00 A.M.	Art 102-Design with Material.....W107, W108
-----------------	---------------------------------------------

(Continued on Page 2)

Though Cynics

will disagree, we feel that the 1962-63 school year has brought much in the way of internal success to the student body of Paterson State College. As we reflect upon the events of the past year, we cannot help but notice that the most startling — and pleasing — change has taken place in the Student Government Association. The efficiency and good judgement reflected by this year's council leads us to believe that real student government has finally made its arrival at Paterson State College. Our most sincere congratulations go to the officers and members of the council for making the "S" in SGA meaningful. We sincerely hope that the new council will "keep the ball rolling."

Two Weeks

ago, the BEACON came forth with a positive proposal for the establishment of a system for recognition of fraternities and sororities. We are happy to see that the SGA picked-up the proposal and voted to have their president appoint a committee to formalize a plan to be presented to the administration and faculty of this college. It is our sincere hope that when this committee finalizes its proposal — currently in the active planning stage — our administration and faculty members will see fit to give it a thorough appraisal and render their opinions and/or decisions accordingly.

We of the BEACON can insure the new committee of our wholehearted and unwaivering support in bringing to and keeping before the students of Paterson State College the issue of fraternity and sorority recognition. We will stand on this pledge.

To the

members of the class of '63, the BEACON extends its fondest thanks and best wishes for much success. To returning students a hope for a bigger and better year to come at Paterson State College. Adios!

EXAM SCHEDULE

(Continued from Page 1)

Art. 306 - Drawing	W102
Art. 311 - Art in the Elementary School	W106
Art. 312 - Art in the Early Childhood Education	H101
Ed. 304 - Junior High School Methods, Curriculum and Praction	H103
Eng. 302 - Advanced Compulsory	W101
Eng. 301 - Teaching Secondary School English	W101
Math. 102 - College Mathematics	H109
Math. 302 - Calculus	W101
Mus. 302 - Harmony	W102
Sci. 302 - Organic Chemistry	W102
Sci. 301 - Teaching Secondary School Science	W102
Sp. 307 - Advanced Speech Correction	W101
Sp. 308 - Auditory Rehabilitation	W101

10:30 - 12:00 P.M.	H100
Math. 310 - Methods and Materials in Music Education	H100, H101, H102, H103
S. S. 311 - History of Civilization	Gym
Mus. 310 - Music Appreciation	Gym

2:00 - 4:30 P.M.	H106, Gym
Math. 311 - Background of Mathematics	W102, W103
Sci. 304 - General Physics	Gym

TUESDAY, JUNE 4

8:30 - 10:00 A.M.	H106, Gym
Eng. 302 - Creative Writing	W102, W103
Ed. 310 - Health & Phys. Educ. Program in Elementary School	W102, W103
Sci. 104 - General Chemistry	Gym
S. S. 305 - United States History (Origin of Nation)	Gym
S. S. 304 - United States History (Middle Years)	Gym

10:30 - 12:00 A.M.	Gym
Mus. 311 - Fundamentals of Music	Gym

1:00 - 2:30 P.M.	H101
Ed. 101 - Introduction to Education	H101
Ed. 305 - Early Childhood Activity Programs	H101
Ed. 312 - Psychology of the Handicapped Child	H101
Ed. 304 - Mental Hygiene	W101
Sci. 322 - Embryology	W101
Sci. 405 - Introduction to Astrobiology	H101
S. S. 401 - Teaching Secondary School Social Studies	H101

3:00 - 4:30 P.M.	Gym
Sci. 110 - General Biology	Gym

WEDNESDAY, JUNE 5

8:30 - 10:00 A.M.	H106, Gym
Ed. 302 - Human Development and Behavior	H106
Eng. 402 - Early English Drama	W101
Math. 302 - Higher Algebra	H101
S. S. 302 - Frontier in American History	H101

10:30 - 12:00 A.M.	G1, H101, H104, H109, H106, H110
Ed. 110 - Personal Health and Safety	G1, H101, H104, H109, H106, H110
Sci. 310 - Introduction to Physical Science	Gym
Sci. 311 - Introduction to Physical Science	Gym

1:00 - 2:30 P.M.	Gym
CONFLICTS	Gym

3:00 - 4:30 P.M.	Gym
CONFLICTS	Gym

ONE QUIET FACT



Winston is America's
best-selling filter
cigarette because
Winston is America's
best-tasting filter
cigarette!

PURE WHITE,
MODERN FILTER

PLUS FILTER - BLEND UP FRONT

Winston tastes good
like a cigarette should!

"Inside Story" Awarded Best Show

Taking first place in campus awards for the Best Show was the Frank Merriwell Plus Five for "The Inside Story." Also receiving recognition at Awards Assembly held last day were the Junior Class Carnival Booth, Suring School, the Hospitality club's party play in the Snack Bar. Each of the above received first awards in their respective categories as judged by the Campus Committee.

"The Inside Story" was judged on content, originality, presentation, punctuality, scenery, costumes and discretion. The show also was in the most tickets of the other shows, "Censored," "The Town" and "Piano."

Judy Lowellen, Pat Dunne, Charlotte Aversa wrote the story for the show which used the West Side Story and emphasized local campus rivalry between groups at Paterson State College. Carnival time, the Thelms and Saps. Appearing in the show were Carol Dillmar, Al Kemp, Blag, Joyce Bellaforte, Bob Marston, John, Carol Perna, Kara, Chilik, a cast of stars from the Merriwell group.

The story ends with both realizing that in order to succeed both must work together. Through the presentation, harmonies were made to the campus organization of Saps, L., for singing halls cheaper than any off-campus organization has yet accomplished, and using Lincoln in Paterson for their fall show. The scenery for the show done by Marianne Schumacher, Lucille Nardella controlled lighting effects. The show brought in over two thousand and tickets.

LETTER TO EDITOR

(Continued from Page 1)

organization Mr. Albanese represents cannot make that statement. In spite of the efforts of the Beacon to place all blame on Shea, I would remind the campus community that it was the student body who by vote amended the constitution of the Student Government Association to eliminate the granting of charters any organization which was open to membership by any interested student.

I subscribed to the policy which was formulated, and I submit to it now. I firmly believe that the evil done by fraternities and sororities to the victims of discrimination far more than sets any positive values they may claim.

Sincerely,
HERBERT LEE CULLEN

Baseball Wrap-up

The Pioneers closed the baseball season last Wednesday with a better than 500 record. In early April the ball started rolling with five wins. Their record stood at 4 wins and 3 losses when they suddenly dropped four games. Now as the Beacon goes to press the Pioneers have 9 wins and 3 losses with two games recorded.

Listed below are the scores:

PSC	Opponent
5	Newark
12	NCE
10	Upsala
20	Hunter
11	Newark
2	Trenton
16	Johnson
3	Glassboro
2	Trenton
12	Newark
6	Jersey City
8	Bloomfield
0	Montclair
3	Sheiton
4	Newark
7	Jersey City