



FactBook, 2022-2023

Admissions and New Students, Fall 2018 to Fall 2022



William Paterson University

FactBook, 2022-2023

Admissions and New Students, Fall 2018 to Fall 2022

Table of Contents

[Table 1a. Undergraduate Applications, Admissions, and Enrollment](#)

[Table 1b. Graduate Applications, Admissions, and Enrollment](#)

[Table 2a. Undergraduate Applications, Admissions, and Enrollment. By Gender](#)

[Table 2b. Graduate Applications, Admissions, and Enrollment. By Gender](#)

[Table 3a. Undergraduate Applications, Admissions, and Enrollment. By Race/Ethnicity](#)

[Table 4a. New Undergraduate Enrollment by Admission Group](#)

[Table 4b. New Graduate Enrollment by Admission Group](#)

[Table 5a. New Undergraduate Students by Full-Time/Part-Time Status and Admission Group](#)

[Table 5b. New Graduate Students by Full-Time/Part-Time Status and Admission Group](#)

[Table 6a. New Undergraduate Students by Full-Time/Part-Time Status and Admission Group. By Gender](#)

[Table 6b. New Graduate Students by Full-Time/Part-Time Status and Admission Group](#)

[Table 7a. New Undergraduate Students by Full-Time/Part-Time Status and Admission Group. By Race/Ethnicity](#)

[Table 7b. New Graduate Students by Full-Time/Part-Time Status and Admission Group](#)



Table 1a. Undergraduate Applications, Admissions, and Enrollment

Entering Semester	Completed Applications	Accepted Applications	Enrolled	Accept %	Yield %
First-Time in College					
Fall 2018	8,150	7,606	1,704	93%	22%
Fall 2019	9,340	8,554	1,537	92%	18%
Fall 2020	9,309	8,444	1,263	91%	15%
Fall 2021	8,126	7,638	996	94%	13%
Fall 2022	7,063	6,465	806	92%	12%
New Transfer					
Fall 2018	1,854	1,758	900	95%	51%
Fall 2019	1,627	1,518	807	93%	53%
Fall 2020	1,535	1,442	680	94%	47%
Fall 2021	1,662	1,548	739	93%	48%
Fall 2022	1,595	1,459	791	91%	54%

Table 1b. Graduate Applications, Admissions, and Enrollment

Entering Semester	Completed Applications	Accepted Applications	Enrolled	Accept %	Yield %
Doctoral Degree					
Fall 2018	47	21	15	45%	71%
Fall 2019	121	40	19	33%	48%
Fall 2020	127	42	18	33%	43%
Fall 2021	146	41	32	28%	78%
Fall 2022	258	40	29	16%	73%
Graduate Readmit					
Fall 2018	38	36	27	95%	75%
Fall 2019	33	32	23	97%	72%
Fall 2020	19	17	11	89%	65%
Fall 2021	33	33	23	100%	70%
Fall 2022	38	37	24	97%	65%
New Graduate Non-Degree					
Fall 2018	107	107	73	100%	68%
Fall 2019	125	124	85	99%	69%
Fall 2020	88	88	63	100%	72%
Fall 2021	89	89	44	100%	49%
Fall 2022	55	55	34	100%	62%
New Masters Admit					
Fall 2018	1,174	787	544	67%	69%
Fall 2019	1,034	782	536	76%	69%
Fall 2020	1,223	1,041	682	85%	66%
Fall 2021	1,834	1,387	847	76%	61%
Fall 2022	1,776	1,551	951	87%	61%

**Table 2a. Undergraduate Applications, Admissions, and Enrollment.
By Gender**

	Entering Semester	Completed Applications	Accepted Applications	Enrolled	Accept %	Yield %
First-Time in College						
Female	Fall 2018	4,948	4,680	948	95%	20%
	Fall 2019	5,678	5,300	857	93%	16%
	Fall 2020	5,730	5,390	740	94%	14%
	Fall 2021	4,996	4,760	561	95%	12%
	Fall 2022	4,281	3,981	438	93%	11%
Male	Fall 2018	3,202	2,926	756	91%	26%
	Fall 2019	3,658	3,251	680	89%	21%
	Fall 2020	3,579	3,054	523	85%	17%
	Fall 2021	3,128	2,876	434	92%	15%
	Fall 2022	2,762	2,466	363	89%	15%
Unknown	Fall 2018	0	0	0	.	.
	Fall 2019	4	3	0	75%	0%
	Fall 2020	0	0	0	.	.
	Fall 2021	2	2	1	100%	50%
	Fall 2022	20	18	5	90%	28%
New Transfer						
Female	Fall 2018	1,132	1,090	532	96%	49%
	Fall 2019	994	935	460	94%	49%
	Fall 2020	976	920	418	94%	45%
	Fall 2021	1,128	1,058	494	94%	47%
	Fall 2022	1,086	1,004	540	92%	54%
Male	Fall 2018	722	668	368	93%	55%
	Fall 2019	633	583	347	92%	60%
	Fall 2020	559	522	262	93%	50%
	Fall 2021	533	489	245	92%	50%
	Fall 2022	506	452	250	89%	55%
Unknown	Fall 2018	0	0	0	.	.
	Fall 2021	1	1	0	100%	0%
	Fall 2022	3	3	1	100%	33%

Table 2b. Graduate Applications, Admissions, and Enrollment. By Gender

	Entering Semester	Completed Applications	Accepted Applications	Enrolled	Accept %	Yield %
Doctoral Degree						
Female	Fall 2018	39	17	12	44%	71%
	Fall 2019	92	28	11	30%	39%
	Fall 2020	100	34	14	34%	41%
	Fall 2021	105	31	22	30%	71%
	Fall 2022	194	31	21	16%	68%
Male	Fall 2018	8	4	3	50%	75%
	Fall 2019	29	12	8	41%	67%
	Fall 2020	27	8	4	30%	50%
	Fall 2021	40	10	10	25%	100%
	Fall 2022	60	8	7	13%	88%
Unknown	Fall 2021	1	0	0	0%	.
	Fall 2022	4	1	1	25%	100%
Graduate Readmit						
Female	Fall 2018	30	28	20	93%	71%
	Fall 2019	26	25	19	96%	76%
	Fall 2020	15	14	9	93%	64%
	Fall 2021	24	24	16	100%	67%
	Fall 2022	26	26	18	100%	69%
Male	Fall 2018	8	8	7	100%	88%
	Fall 2019	7	7	4	100%	57%
	Fall 2020	4	3	2	75%	67%
	Fall 2021	9	9	7	100%	78%
	Fall 2022	12	11	6	92%	55%

Table 2b. Graduate Applications, Admissions, and Enrollment. By Gender

	Entering Semester	Completed Applications	Accepted Applications	Enrolled	Accept %	Yield %
New Graduate Non-Degree						
Female	Fall 2018	74	74	52	100%	70%
	Fall 2019	88	87	57	99%	66%
	Fall 2020	61	61	43	100%	70%
	Fall 2021	63	63	27	100%	43%
	Fall 2022	36	36	25	100%	69%
Male	Fall 2018	33	33	21	100%	64%
	Fall 2019	37	37	28	100%	76%
	Fall 2020	27	27	20	100%	74%
	Fall 2021	26	26	17	100%	65%
	Fall 2022	19	19	9	100%	47%
New Masters Admit						
Female	Fall 2018	906	580	398	64%	69%
	Fall 2019	762	575	390	75%	68%
	Fall 2020	887	763	498	86%	65%
	Fall 2021	1,385	1,023	630	74%	62%
	Fall 2022	1,352	1,189	726	88%	61%
Male	Fall 2018	267	207	146	78%	71%
	Fall 2019	271	206	145	76%	70%
	Fall 2020	336	278	184	83%	66%
	Fall 2021	448	364	217	81%	60%
	Fall 2022	424	362	225	85%	62%
Unknown	Fall 2018	1	0	0	0%	.
	Fall 2019	1	1	1	100%	100%
	Fall 2020	0	0	0	.	.
	Fall 2021	1	0	0	0%	.
	Fall 2022	0	0	0	.	.

Table 3a. Undergraduate Applications, Admissions, and Enrollment. By Race/Ethnicity

	Entering Semester	Completed Applications	Accepted Applications	Enrolled	Accept %	Yield %
First-Time in College						
Asian	Fall 2018	572	560	92	98%	16%
	Fall 2019	570	553	99	97%	18%
	Fall 2020	621	593	89	95%	15%
	Fall 2021	502	490	64	98%	13%
	Fall 2022	510	489	51	96%	10%
Black	Fall 2018	2,103	1,765	451	84%	26%
	Fall 2019	2,622	2,204	428	84%	19%
	Fall 2020	2,585	2,134	310	83%	15%
	Fall 2021	2,176	1,924	227	88%	12%
	Fall 2022	1,818	1,538	205	85%	13%
Hawaiian/Pacific Islander	Fall 2018	3	3	0	100%	0%
	Fall 2019	2	2	2	100%	100%
	Fall 2020	10	10	4	100%	40%
	Fall 2021	6	6	2	100%	33%
	Fall 2022	6	6	2	100%	33%
Hispanic	Fall 2018	2,855	2,722	611	95%	22%
	Fall 2019	3,349	3,108	550	93%	18%
	Fall 2020	3,429	3,170	448	92%	14%
	Fall 2021	2,941	2,797	392	95%	14%
	Fall 2022	2,615	2,447	299	94%	12%
Multi-Racial	Fall 2018	275	261	65	95%	25%
	Fall 2019	281	253	49	90%	19%
	Fall 2020	289	259	45	90%	17%
	Fall 2021	200	190	22	95%	12%
	Fall 2022	48	42	11	88%	26%

Table 3a. Undergraduate Applications, Admissions, and Enrollment. By Race/Ethnicity

	Entering Semester	Completed Applications	Accepted Applications	Enrolled	Accept %	Yield %
Native American	Fall 2018	9	9	1	100%	11%
	Fall 2019	12	12	3	100%	25%
	Fall 2020	6	6	0	100%	0%
	Fall 2021	5	5	1	100%	20%
	Fall 2022	10	10	0	100%	0%
White	Fall 2018	2,226	2,189	469	98%	21%
	Fall 2019	2,320	2,262	383	98%	17%
	Fall 2020	2,107	2,037	344	97%	17%
	Fall 2021	1,996	1,949	257	98%	13%
	Fall 2022	1,607	1,561	199	97%	13%
International	Fall 2018	39	38	5	97%	13%
	Fall 2019	55	45	8	82%	18%
	Fall 2020	108	100	5	93%	5%
	Fall 2021	138	128	18	93%	14%
	Fall 2022	56	49	8	88%	16%
Unknown	Fall 2018	68	59	10	87%	17%
	Fall 2019	129	115	15	89%	13%
	Fall 2020	154	135	18	88%	13%
	Fall 2021	162	149	13	92%	9%
	Fall 2022	393	323	31	82%	10%

Table 3a. Undergraduate Applications, Admissions, and Enrollment. By Race/Ethnicity

	Entering Semester	Completed Applications	Accepted Applications	Enrolled	Accept %	Yield %
New Transfer						
Asian	Fall 2018	133	122	65	92%	53%
	Fall 2019	86	83	47	97%	57%
	Fall 2020	106	102	48	96%	47%
	Fall 2021	143	129	72	90%	56%
	Fall 2022	119	104	52	87%	50%
Black	Fall 2018	337	306	138	91%	45%
	Fall 2019	298	260	123	87%	47%
	Fall 2020	297	265	113	89%	43%
	Fall 2021	320	290	137	91%	47%
	Fall 2022	330	289	148	88%	51%
Hawaiian/Pacific Islander	Fall 2018	1	1	0	100%	0%
	Fall 2020	1	1	0	100%	0%
	Fall 2021	1	1	1	100%	100%
	Fall 2022	2	2	2	100%	100%
Hispanic	Fall 2018	584	561	292	96%	52%
	Fall 2019	532	501	271	94%	54%
	Fall 2020	492	457	220	93%	48%
	Fall 2021	514	471	218	92%	46%
	Fall 2022	471	432	253	92%	59%
Multi-Racial	Fall 2018	62	57	26	92%	46%
	Fall 2019	55	52	27	95%	52%
	Fall 2020	35	32	12	91%	38%
	Fall 2021	36	36	14	100%	39%
	Fall 2022	46	42	22	91%	52%
Native American	Fall 2018	2	2	2	100%	100%
	Fall 2019	2	2	1	100%	50%
	Fall 2021	3	3	0	100%	0%
	Fall 2022	2	1	0	50%	0%

Table 3a. Undergraduate Applications, Admissions, and Enrollment. By Race/Ethnicity

	Entering Semester	Completed Applications	Accepted Applications	Enrolled	Accept %	Yield %
White	Fall 2018	692	667	365	96%	55%
	Fall 2019	619	586	321	95%	55%
	Fall 2020	511	494	247	97%	50%
	Fall 2021	559	535	262	96%	49%
	Fall 2022	532	505	278	95%	55%
International	Fall 2018	15	14	3	93%	21%
	Fall 2019	23	23	11	100%	48%
	Fall 2020	51	51	20	100%	39%
	Fall 2021	50	48	22	96%	46%
	Fall 2022	14	12	4	86%	33%
Unknown	Fall 2018	28	28	9	100%	32%
	Fall 2019	12	11	6	92%	55%
	Fall 2020	42	40	20	95%	50%
	Fall 2021	36	35	13	97%	37%
	Fall 2022	79	72	32	91%	44%

Table 3b. Graduate Applications, Admissions, and Enrollment. By Race/Ethnicity

	Entering Semester	Completed Applications	Accepted Applications	Enrolled	Accept %	Yield %
Doctoral Degree						
Asian	Fall 2018	7	3	3	43%	100%
	Fall 2019	12	5	2	42%	40%
	Fall 2020	16	4	3	25%	75%
	Fall 2021	17	5	5	29%	100%
	Fall 2022	35	5	4	14%	80%
Black	Fall 2018	1	0	0	0%	.
	Fall 2019	7	3	2	43%	67%
	Fall 2020	6	3	3	50%	100%
	Fall 2021	20	7	7	35%	100%
	Fall 2022	20	3	1	15%	33%
Hispanic	Fall 2018	6	2	2	33%	100%
	Fall 2019	14	6	4	43%	67%
	Fall 2020	23	6	2	26%	33%
	Fall 2021	27	7	6	26%	86%
	Fall 2022	42	9	6	21%	67%
Multi-Racial	Fall 2018	0	0	0	.	.
	Fall 2019	0	0	0	.	.
	Fall 2020	0	0	0	.	.
	Fall 2021	1	1	1	100%	100%
	Fall 2022	2	1	0	50%	0%
Native American	Fall 2021	0	0	0	.	.
White	Fall 2018	31	14	9	45%	64%
	Fall 2019	71	20	9	28%	45%
	Fall 2020	75	27	9	36%	33%
	Fall 2021	71	19	12	27%	63%
	Fall 2022	145	21	17	14%	81%
International	Fall 2018	1	1	0	100%	0%
	Fall 2019	5	1	0	20%	0%
	Fall 2020	1	1	1	100%	100%
	Fall 2021	0	0	0	.	.

Table 3b. Graduate Applications, Admissions, and Enrollment. By Race/Ethnicity

	Entering Semester	Completed Applications	Accepted Applications	Enrolled	Accept %	Yield %
Unknown	Fall 2018	1	1	1	100%	100%
	Fall 2019	12	5	2	42%	40%
	Fall 2020	6	1	0	17%	0%
	Fall 2021	10	2	1	20%	50%
	Fall 2022	14	1	1	7%	100%
Graduate Readmit						
Asian	Fall 2018	3	2	2	67%	100%
	Fall 2019	2	2	2	100%	100%
	Fall 2021	3	3	2	100%	67%
	Fall 2022	2	2	1	100%	50%
Black	Fall 2018	4	4	4	100%	100%
	Fall 2019	1	1	1	100%	100%
	Fall 2020	1	1	1	100%	100%
	Fall 2021	4	4	4	100%	100%
	Fall 2022	5	4	1	80%	25%
Hispanic	Fall 2018	9	9	5	100%	56%
	Fall 2019	15	14	7	93%	50%
	Fall 2020	4	4	3	100%	75%
	Fall 2021	5	5	4	100%	80%
	Fall 2022	17	17	13	100%	76%
Multi-Racial	Fall 2018	1	1	1	100%	100%
	Fall 2019	2	2	2	100%	100%
White	Fall 2018	21	20	15	95%	75%
	Fall 2019	13	13	11	100%	85%
	Fall 2020	13	11	6	85%	55%
	Fall 2021	21	21	13	100%	62%
	Fall 2022	14	14	9	100%	64%
Unknown	Fall 2020	1	1	1	100%	100%

Table 3b. Graduate Applications, Admissions, and Enrollment. By Race/Ethnicity

	Entering Semester	Completed Applications	Accepted Applications	Enrolled	Accept %	Yield %
New Graduate Non-Degree						
Asian	Fall 2018	7	7	5	100%	71%
	Fall 2019	10	10	8	100%	80%
	Fall 2020	8	8	3	100%	38%
	Fall 2021	7	7	2	100%	29%
	Fall 2022	7	7	2	100%	29%
Black	Fall 2018	11	11	3	100%	27%
	Fall 2019	9	9	5	100%	56%
	Fall 2020	10	10	3	100%	30%
	Fall 2021	12	12	4	100%	33%
	Fall 2022	8	8	3	100%	38%
Hawaiian/Pacific Islander	Fall 2022	2	2	1	100%	50%
Hispanic	Fall 2018	17	17	8	100%	47%
	Fall 2019	28	27	17	96%	63%
	Fall 2020	12	12	7	100%	58%
	Fall 2021	28	28	14	100%	50%
	Fall 2022	8	8	5	100%	63%
Multi-Racial	Fall 2018	2	2	1	100%	50%
	Fall 2019	3	3	1	100%	33%
	Fall 2020	3	3	2	100%	67%
	Fall 2021	1	1	0	100%	0%
	Fall 2022	3	3	3	100%	100%
Native American	Fall 2022	0	0	0	.	.
White	Fall 2018	67	67	53	100%	79%
	Fall 2019	71	71	53	100%	75%
	Fall 2020	50	50	43	100%	86%
	Fall 2021	39	39	23	100%	59%
	Fall 2022	27	27	20	100%	74%

Table 3b. Graduate Applications, Admissions, and Enrollment. By Race/Ethnicity

	Entering Semester	Completed Applications	Accepted Applications	Enrolled	Accept %	Yield %
International	Fall 2020	0	0	0	.	.
Unknown	Fall 2018	3	3	3	100%	100%
	Fall 2019	4	4	1	100%	25%
	Fall 2020	5	5	5	100%	100%
	Fall 2021	2	2	1	100%	50%
	Fall 2022	0	0	0	.	.
New Masters Admit						
Asian	Fall 2018	64	50	30	78%	60%
	Fall 2019	60	41	28	68%	68%
	Fall 2020	87	72	42	83%	58%
	Fall 2021	169	127	85	75%	67%
	Fall 2022	162	134	80	83%	60%
Black	Fall 2018	95	61	43	64%	70%
	Fall 2019	67	50	41	75%	82%
	Fall 2020	129	106	78	82%	74%
	Fall 2021	237	169	111	71%	66%
	Fall 2022	250	209	137	84%	66%
Hawaiian/Pacific Islander	Fall 2020	1	1	1	100%	100%
	Fall 2021	2	1	1	50%	100%
	Fall 2022	3	2	1	67%	50%
Hispanic	Fall 2018	204	151	120	74%	79%
	Fall 2019	218	170	131	78%	77%
	Fall 2020	273	233	161	85%	69%
	Fall 2021	387	308	181	80%	59%
	Fall 2022	357	320	208	90%	65%
Multi-Racial	Fall 2018	33	20	13	61%	65%
	Fall 2019	24	20	16	83%	80%
	Fall 2020	30	30	26	100%	87%
	Fall 2021	37	32	23	86%	72%
	Fall 2022	50	47	28	94%	60%

Table 3b. Graduate Applications, Admissions, and Enrollment. By Race/Ethnicity

	Entering Semester	Completed Applications	Accepted Applications	Enrolled	Accept %	Yield %
Native American	Fall 2019	2	2	0	100%	0%
	Fall 2021	1	1	0	100%	0%
	Fall 2022	3	2	2	67%	100%
White	Fall 2018	678	447	312	66%	70%
	Fall 2019	584	445	297	76%	67%
	Fall 2020	625	546	347	87%	64%
	Fall 2021	910	683	420	75%	61%
	Fall 2022	864	768	464	89%	60%
International	Fall 2018	64	37	15	58%	41%
	Fall 2019	43	28	9	65%	32%
	Fall 2020	33	16	5	48%	31%
	Fall 2021	25	19	9	76%	47%
	Fall 2022	12	10	4	83%	40%
Unknown	Fall 2018	36	21	11	58%	52%
	Fall 2019	36	26	14	72%	54%
	Fall 2020	45	37	22	82%	59%
	Fall 2021	66	47	17	71%	36%
	Fall 2022	75	59	27	79%	46%

Table 4a. New Undergraduate Enrollment by Admission Group

	Fall 2018	Fall 2019	Fall 2020	Fall 2021	Fall 2022	One Year % Change	Five Year % Change
First-Time in College	1,704	1,537	1,263	996	806	-19%	-53%
New Transfer	900	807	680	739	791	7%	-12%
New Undergraduate Certificate	41	31	47	35	22	-37%	-46%
New Undergraduate Non-Degree	90	140	34	51	9	-82%	-90%
UG 2nd Degrees and Re-Admits	268	278	288	341	310	-9%	16%
Undergraduate Total	3,003	2,793	2,312	2,162	1,938	-10%	-36%

Table 4b. New Graduate Enrollment by Admission Group

	Fall 2018	Fall 2019	Fall 2020	Fall 2021	Fall 2022	One Year % Change	Five Year % Change
Doctoral Degree	15	19	18	32	29	-9%	93%
Graduate Readmit	27	23	11	23	24	4%	-11%
New Graduate Non-Degree	73	85	63	44	34	-23%	-53%
New Masters Admit	544	536	682	847	951	12%	75%
Graduate Total	659	663	774	946	1,038	10%	58%

Table 5a. New Undergraduate Students by Full-Time/Part-Time Status and Admission Group

	Fall 2018	Fall 2019	Fall 2020	Fall 2021	Fall 2022	One Year % Change	Five Year % Change
Full-Time							
First-Time in College	1,698	1,529	1,251	989	801	-19%	-53%
New Transfer	769	680	497	483	550	14%	-29%
New Undergraduate Certificate	16	9	11	10	7	-30%	-56%
New Undergraduate Non-Degree	10	8	.	6	2	-67%	-80%
UG 2nd Degrees and Re-Admits	126	135	118	151	150	-1%	19%
Full-Time Subtotal	2,619	2,361	1,877	1,639	1,510	-8%	-42%
Part-Time							
First-Time in College	6	8	12	7	5	-29%	-17%
New Transfer	131	127	183	256	241	-6%	84%
New Undergraduate Certificate	25	22	36	25	15	-40%	-40%
New Undergraduate Non-Degree	80	132	34	45	7	-84%	-91%
UG 2nd Degrees and Re-Admits	142	143	170	190	160	-16%	13%
Part-Time Subtotal	384	432	435	523	428	-18%	12%
Undergraduate Total	3,003	2,793	2,312	2,162	1,938	-10%	-36%

Table 5b. New Graduate Students by Full-Time/Part-Time Status and Admission Group

	Fall 2018	Fall 2019	Fall 2020	Fall 2021	Fall 2022	One Year % Change	Five Year % Change
Full-Time							
Doctoral Degree	9	11	11	8	10	25%	11%
Graduate Readmit	1	.	.	1	1	0%	0%
New Graduate Non-Degree	6	8	3	1	3	200%	-50%
New Masters Admit	157	170	215	262	317	21%	102%
Full-Time Subtotal	173	189	229	272	331	22%	91%
Part-Time							
Doctoral Degree	6	8	7	24	19	-21%	217%
Graduate Readmit	26	23	11	22	23	5%	-12%
New Graduate Non-Degree	67	77	60	43	31	-28%	-54%
New Masters Admit	387	366	467	585	634	8%	64%
Part-Time Subtotal	486	474	545	674	707	5%	46%
Graduate Total	659	663	774	946	1,038	10%	58%

Table 6a. New Undergraduate Students by Full-Time/Part-Time Status and Admission Group. By Gender

	Fall 2018	Fall 2019	Fall 2020	Fall 2021	Fall 2022	One Year % Change	Five Year % Change
Female							
First-Time in College	948	857	740	561	438	-22%	-54%
New Transfer	532	460	418	494	540	9%	2%
New Undergraduate Certificate	28	22	33	19	13	-32%	-54%
New Undergraduate Non-Degree	46	92	21	29	5	-83%	-89%
UG 2nd Degrees and Re-Admits	149	154	186	218	203	-7%	36%
Female Sub-Total	1,703	1,585	1,398	1,321	1,199	-9%	-30%
Male							
First-Time in College	756	680	523	434	363	-16%	-52%
New Transfer	368	347	262	245	250	2%	-32%
New Undergraduate Certificate	13	9	14	16	9	-44%	-31%
New Undergraduate Non-Degree	41	27	13	22	4	-82%	-90%
UG 2nd Degrees and Re-Admits	119	124	102	123	106	-14%	-11%
Male Sub-Total	1,297	1,187	914	840	732	-13%	-44%
Undergraduate Total	3,000	2,772	2,312	2,161	1,931	-11%	-36%

Table 6b. New Graduate Students by Full-Time/Part-Time Status and Admission Group

	Fall 2018	Fall 2019	Fall 2020	Fall 2021	Fall 2022	One Year % Change	Five Year % Change
Female							
Doctoral Degree	12	11	14	22	21	-4.50%	75.00%
Graduate Readmit	20	19	9	16	18	12.50%	-10.00%
New Graduate Non-Degree	52	57	43	27	25	-7.40%	-51.90%
New Masters Admit	398	390	498	630	726	15.20%	82.40%
Female Sub-Total	482	477	564	695	790	13.70%	63.90%
Male							
Doctoral Degree	3	8	4	10	7	-30.00%	133.30%
Graduate Readmit	7	4	2	7	6	-14.30%	-14.30%
New Graduate Non-Degree	21	28	20	17	9	-47.10%	-57.10%
New Masters Admit	146	145	184	217	225	3.70%	54.10%
Male Sub-Total	177	185	210	251	247	-1.60%	39.50%
Graduate Total	659	662	774	946	1,037	9.60%	57.40%

Table 7a. New Undergraduate Students by Full-Time/Part-Time Status and Admission Group. By Race/Ethnicity

	Fall 2018	Fall 2019	Fall 2020	Fall 2021	Fall 2022	One Year % Change	Five Year % Change
Asian							
First-Time in College	92	99	89	64	51	-20%	-45%
New Transfer	65	47	48	72	52	-28%	-20%
New Undergraduate Certificate	8	4	7	7	3	-57%	-63%
New Undergraduate Non-Degree	.	4	4	2	.	.	.
UG 2nd Degrees and Re-Admits	24	16	22	25	24	-4%	0%
	189	170	170	170	130	-24%	-31%
Black							
First-Time in College	451	428	310	227	205	-10%	-55%
New Transfer	138	123	113	137	148	8%	7%
New Undergraduate Certificate	6	8	11	11	2	-82%	-67%
New Undergraduate Non-Degree	2	3	1
UG 2nd Degrees and Re-Admits	42	49	60	68	60	-12%	43%
	639	611	495	443	415	-6%	-35%
Hawaiian/Pacific Islander							
First-Time in College	.	2	4	2	2	0%	.
New Transfer	.	.	.	1	2	100%	.
UG 2nd Degrees and Re-Admits	.	.	.	1	.	.	.
	.	2	4	4	4	0%	.
Hispanic							
First-Time in College	611	550	448	392	299	-24%	-51%
New Transfer	292	271	220	218	253	16%	-13%
New Undergraduate Certificate	7	8	13	7	7	0%	0%
New Undergraduate Non-Degree	5	9	7	10	.	.	.
UG 2nd Degrees and Re-Admits	89	99	90	106	100	-6%	12%
	1,004	937	778	733	659	-10%	-34%

Table 7a. New Undergraduate Students by Full-Time/Part-Time Status and Admission Group. By Race/Ethnicity

	Fall 2018	Fall 2019	Fall 2020	Fall 2021	Fall 2022	One Year % Change	Five Year % Change
Multi-Racial							
First-Time in College	65	49	45	22	11	-50%	-83%
New Transfer	26	27	12	14	22	57%	-15%
New Undergraduate Certificate	3	1	1	2	1	-50%	-67%
New Undergraduate Non-Degree	1	4	.	.	1	.	0%
UG 2nd Degrees and Re-Admits	15	14	14	17	21	24%	40%
	110	95	72	55	56	2%	-49%
Native American							
First-Time in College	1	3	.	1	.	.	.
New Transfer	2	1
UG 2nd Degrees and Re-Admits	1	.	1	1	.	.	.
	4	4	1	2	.	.	.
White							
First-Time in College	469	383	344	257	199	-23%	-58%
New Transfer	365	321	247	262	278	6%	-24%
New Undergraduate Certificate	14	9	15	8	8	0%	-43%
New Undergraduate Non-Degree	17	15	20	33	8	-76%	-53%
UG 2nd Degrees and Re-Admits	95	94	96	115	96	-17%	1%
	960	822	722	675	589	-13%	-39%
International							
First-Time in College	5	8	5	18	8	-56%	60%
New Transfer	3	11	20	22	4	-82%	33%
New Undergraduate Certificate	.	1
New Undergraduate Non-Degree	3	3
UG 2nd Degrees and Re-Admits	1	4	3	4	3	-25%	200%
	12	27	28	44	15	-66%	25%

Table 7a. New Undergraduate Students by Full-Time/Part-Time Status and Admission Group. By Race/Ethnicity

	Fall 2018	Fall 2019	Fall 2020	Fall 2021	Fall 2022	One Year % Change	Five Year % Change
Unknown							
First-Time in College	10	15	18	13	31	139%	210%
New Transfer	9	6	20	13	32	146%	256%
New Undergraduate Certificate	3	.	.	.	1	.	-67%
New Undergraduate Non-Degree	62	102	2	6	.	.	.
UG 2nd Degrees and Re-Admits	1	2	2	4	6	50%	500%
	85	125	42	36	70	94%	-18%
Undergraduate Total	3,003	2,793	2,312	2,162	1,938	-10%	-36%

Table 7b. New Graduate Students by Full-Time/Part-Time Status and Admission Group

	Fall 2018	Fall 2019	Fall 2020	Fall 2021	Fall 2022	One Year % Change	Five Year % Change
Asian							
Doctoral Degree	3	2	3	5	4	-20%	33%
Graduate Readmit	2	2	.	2	1	-50%	-50%
New Graduate Non-Degree	5	8	3	2	2	0%	-60%
New Masters Admit	30	28	42	85	80	-6%	167%
	40	40	48	94	87	-7%	118%
Black							
Doctoral Degree	.	2	3	7	1	-86%	.
Graduate Readmit	4	1	1	4	1	-75%	-75%
New Graduate Non-Degree	3	5	3	4	3	-25%	0%
New Masters Admit	43	41	78	111	137	23%	219%
	50	49	85	126	142	13%	184%
Hawaiian/Pacific Islander							
New Graduate Non-Degree	1	.	.
New Masters Admit	.	.	1	1	1	0%	.
	.	.	1	1	2	100%	.
Hispanic							
Doctoral Degree	2	4	2	6	6	0%	200%
Graduate Readmit	5	7	3	4	13	225%	160%
New Graduate Non-Degree	8	17	7	14	5	-64%	-38%
New Masters Admit	120	131	161	181	208	15%	73%
	135	159	173	205	232	13%	72%
Multi-Racial							
Doctoral Degree	.	.	.	1	.	.	.
Graduate Readmit	1	2
New Graduate Non-Degree	1	1	2	.	3	.	200%
New Masters Admit	13	16	26	23	28	22%	115%
	15	19	28	24	31	29%	107%
Native American							
New Masters Admit	2	.	.
	2	.	.

Table 7b. New Graduate Students by Full-Time/Part-Time Status and Admission Group

	Fall 2018	Fall 2019	Fall 2020	Fall 2021	Fall 2022	One Year % Change	Five Year % Change
White							
Doctoral Degree	9	9	9	12	17	42%	89%
Graduate Readmit	15	11	6	13	9	-31%	-40%
New Graduate Non-Degree	53	53	43	23	20	-13%	-62%
New Masters Admit	312	297	347	420	464	11%	49%
	389	370	405	468	510	9%	31%
International							
Doctoral Degree	.	.	1
New Masters Admit	15	9	5	9	4	-56%	-73%
	15	9	6	9	4	-56%	-73%
Unknown							
Doctoral Degree	1	2	.	1	1	0%	0%
Graduate Readmit	.	.	1
New Graduate Non-Degree	3	1	5	1	.	.	.
New Masters Admit	11	14	22	17	27	59%	146%
	15	17	28	19	28	47%	87%
Graduate Total	659	663	774	946	1,038	10%	58%



FactBook, 2022-2023

Headcount Enrollment, Fall 2018 to Fall 2022



William Paterson University

FactBook, 2022-2023

Headcount Enrollment, Fall 2018 to Fall 2022

Table of Contents

[Table 1. Fall Enrollment Summary](#)

[Table 2. Fall Enrollment by Level and Full-time/Part-time Status](#)

[Table 3. Fall Enrollment by Level and Gender](#)

[Table 4. Fall Enrollment by Level, Race and Ethnicity](#)

[Table 5. Fall Enrollment by Level and Campus](#)

[Table 6. Fall Enrollment by Level and In-State/Out-of-State](#)

[Table 7. Fall Enrollment by Level and New Jersey County](#)

[Table 8. Fall Enrollment by Level and WP Online/Main Campus](#)

[Table 9a. Undergraduate Fall Majors by College \(1st Majors\)](#)

[Table 9b. Graduate Fall Majors by College \(1st Majors\)](#)

[Table 10a. Undergraduates by Dorm Resident/Commuter](#)

[Table 10b. Undergraduates by Class](#)



Table 1. Fall Enrollment Summary

	Fall 2018	Fall 2019	Fall 2020	Fall 2021	Fall 2022	One Year % Change	Five Year % Change
Grand Total	10,198	10,105	9,635	9,369	9,070	-3%	-11%
Graduate	1,463	1,500	1,664	2,150	2,466	15%	69%
Undergraduate	8,735	8,605	7,971	7,219	6,604	-9%	-24%
Full-Time	7,598	7,510	6,886	6,225	5,758	-8%	-24%
Part-Time	2,600	2,595	2,749	3,144	3,312	5%	27%
Female	5,880	5,903	5,841	5,891	5,888	0%	0%
Male	4,313	4,179	3,793	3,477	3,174	-9%	-26%
Unknown	5	23	1	1	8	700%	60%
Asian	704	700	679	739	725	-2%	3%
Black	1,707	1,736	1,689	1,605	1,588	-1%	-7%
Hawaiian/Pacific Islander	5	5	9	11	10	-9%	100%
Hispanic	3,112	3,152	3,070	2,908	2,761	-5%	-11%
Multi-Racial	303	313	311	286	267	-7%	-12%
Native American	13	13	9	8	5	-38%	-62%
White	4,084	3,893	3,646	3,548	3,416	-4%	-16%
International	79	78	78	121	143	18%	81%
Unknown	191	215	144	143	155	8%	-19%
Traditional	10,198	10,105	9,229	7,796	6,602	-15%	-35%
WP On-Line	0	0	406	1,573	2,468	57%	.

Table 2. Fall Enrollment by Level and Full-time/Part-time Status

	Fall 2018	Fall 2019	Fall 2020	Fall 2021	Fall 2022	One Year % Change	Five Year % Change
Graduate							
Full-Time	328	345	406	517	624	21%	90%
Part-Time	1,135	1,155	1,258	1,633	1,842	13%	62%
Graduate Sub-Total	1,463	1,500	1,664	2,150	2,466	15%	69%
Undergraduate							
Full-Time	7,270	7,165	6,480	5,708	5,134	-10%	-29%
Part-Time	1,465	1,440	1,491	1,511	1,470	-3%	0%
Undergraduate Sub-Total	8,735	8,605	7,971	7,219	6,604	-9%	-24%
Grand Total	10,198	10,105	9,635	9,369	9,070	-3%	-11%

Table 3. Fall Enrollment by Level and Gender

	Fall 2018	Fall 2019	Fall 2020	Fall 2021	Fall 2022	One Year % Change	Five Year % Change
Graduate							
Female	1,060	1,115	1,243	1,622	1,899	17%	79%
Male	403	384	420	528	566	7%	40%
Unknown	.	1	1	.	1	.	.
Graduate Sub-Total	1,463	1,500	1,664	2,150	2,466	15%	69%
Undergraduate							
Female	4,820	4,788	4,598	4,269	3,989	-7%	-17%
Male	3,910	3,795	3,373	2,949	2,608	-12%	-33%
Unknown	5	22	.	1	7	600%	40%
Undergraduate Sub-Total	8,735	8,605	7,971	7,219	6,604	-9%	-24%
Grand Total	10,198	10,105	9,635	9,369	9,070	-3%	-11%

Table 4. Fall Enrollment by Level, Race and Ethnicity

	Fall 2018	Fall 2019	Fall 2020	Fall 2021	Fall 2022	One Year % Change	Five Year % Change
Graduate							
Asian	93	98	102	177	215	74%	
Black	105	107	156	271	335	74%	
Hawaiian/Pacific Islander	.	.	1	2	2	100%	
Hispanic	301	342	389	462	523	19%	
International	37	29	23	26	40	13%	
Multi-Racial	45	46	57	68	79	19%	
Native American	1	.	.	.	2	.	
Unknown	26	28	47	51	46	9%	
White	855	850	889	1,093	1,224	23%	
	1,463	1,500	1,664	2,150	2,466	29%	
Undergraduate							
Asian	611	602	577	562	510	-2.60%	.
Black	1,602	1,629	1,533	1,334	1,253	-13.00%	.
Hawaiian/Pacific Islander	5	5	8	9	8	12.50%	.
Hispanic	2,811	2,810	2,681	2,446	2,238	-8.80%	.
International	42	49	55	95	103	72.70%	.
Multi-Racial	258	267	254	218	188	-14.20%	.
Native American	12	13	9	8	3	-11.10%	.
Unknown	165	187	97	92	109	-5.20%	.
White	3,229	3,043	2,757	2,455	2,192	-11.00%	.
	8,735	8,605	7,971	7,219	6,604	-9.40%	.
	10,198	10,105	9,635	9,369	9,070	-2.80%	.

Table 5. Fall Enrollment by Level and Campus

	Fall 2018	Fall 2019	Fall 2020	Fall 2021	Fall 2022	One Year % Change	Five Year % Change
Graduate							
Traditional	1,463	1,500	1,379	1,134	1,089	-4%	-26%
WP On-Line	.	.	285	1,016	1,377	36%	.
Graduate Sub-Total	1,463	1,500	1,664	2,150	2,466	15%	69%
Undergraduate							
Traditional	8,735	8,605	7,850	6,662	5,513	-17%	-37%
WP On-Line	.	.	121	557	1,091	96%	.
Undergraduate Sub-Total	8,735	8,605	7,971	7,219	6,604	-9%	-24%
Grand Total	10,198	10,105	9,635	9,369	9,070	-3%	-11%

Table 6. Fall Enrollment by Level and In-State/Out-of-State

	Fall 2018	Fall 2019	Fall 2020	Fall 2021	Fall 2022	One Year % Change	Five Year % Change
Graduate							
New Jersey	1,390	1,428	1,581	1,972	2,195	11%	58%
US Out-of-State	36	43	60	149	230	54%	539%
International	37	29	23	26	40	54%	8%
Unknown State	.	.	.	3	1	-67%	.
Graduate Sub-Total	1,463	1,500	1,664	2,150	2,466	15%	69%
Undergraduate							
New Jersey	8,538	8,407	7,732	6,856	6,226	-9%	-27%
US Out-of-State	151	146	180	264	271	3%	80%
International	42	49	55	95	103	8%	145%
Unknown State	4	3	4	4	4	0%	0%
Undergraduate Sub-Total	8,735	8,605	7,971	7,219	6,604	-9%	-24%
Grand Total	10,198	10,105	9,635	9,369	9,070	-3%	-11%

Table 7. Fall Enrollment by Level and New Jersey County

	Fall 2018	Fall 2019	Fall 2020	Fall 2021	Fall 2022	One Year % Change	Five Year % Change
Graduate							
Passaic	422	428	458	489	454	-7%	8%
Bergen	420	431	445	507	514	1%	22%
Essex	128	140	159	193	226	17%	77%
Morris	178	174	156	215	252	17%	42%
Hudson	50	52	71	92	124	35%	148%
Middlesex	35	33	49	81	103	27%	194%
Union	31	33	52	86	101	17%	226%
Sussex	47	48	55	68	77	13%	64%
Mercer	5	6	11	21	36	71%	620%
Monmouth	17	16	26	67	77	15%	353%
Other NJ County	57	67	99	153	231	51%	305%
Unknown State	.	.	.	3	1	-67%	.
International	37	29	23	26	40	54%	8%
Graduate Sub-Total	1,427	1,457	1,604	2,001	2,236	12%	57%
Undergraduate							
Passaic	2,867	2,917	2,610	2,311	2,003	-13%	-30%
Bergen	1,884	1,822	1,667	1,468	1,346	-8%	-29%
Essex	983	1,005	946	790	690	-13%	-30%
Morris	639	627	603	568	511	-10%	-20%
Hudson	374	352	345	323	311	-4%	-17%
Middlesex	277	270	227	204	209	3%	-25%
Union	313	302	290	264	238	-10%	-24%
Sussex	251	213	220	183	185	1%	-26%
Mercer	208	212	206	175	179	2%	-14%
Monmouth	158	156	146	140	131	-6%	-17%
Other NJ County	584	531	472	430	423	-2%	-28%
Unknown State	4	3	4	4	4	0%	0%
International	42	49	55	95	103	8%	145%
Undergraduate Sub-Total	8,584	8,459	7,791	6,955	6,333	-9%	-26%
Grand Total	10,011	9,916	9,395	8,956	8,569	-4%	-14%

Table 8. Fall Enrollment by Level and WP Online/Main Campus

	Fall 2018	Fall 2019	Fall 2020	Fall 2021	Fall 2022	One Year % Change	Five Year % Change
Graduate							
Main	1,463	1,500	1,379	1,134	1,089	-4%	-26%
WP On-Line	0	0	285	1,016	1,377	36%	.
Graduate Sub-Total	1,463	1,500	1,664	2,150	2,466	15%	69%
Undergraduate							
Main	8,735	8,605	7,850	6,662	5,513	-17%	-37%
WP On-Line	0	0	121	557	1,091	96%	.
Undergraduate Sub-Total	8,735	8,605	7,971	7,219	6,604	-9%	-24%
Grand Total	10,198	10,105	9,635	9,369	9,070	-3%	-11%

Table 9a. Undergraduate Fall Majors by College (1st Majors)

	Fall 2018	Fall 2019	Fall 2020	Fall 2021	Fall 2022	One Year % Change	Five Year % Change
Arts Humanities & Social Sci	3,514	3,536	3,237	2,706	2,393	-12%	-32%
Business	1,486	1,400	1,218	1,002	996	-1%	-33%
Education	483	457	474	399	390	-2%	-19%
Science & Health	2,461	2,525	2,604	2,786	2,610	-6%	6%
Non-degree and Undeclared	782	681	437	324	215	-34%	-73%
Exchange Program	9	6	1	2	.	.	.
Grand Total	8,735	8,605	7,971	7,219	6,604	-9%	-24%

Table 9b. Graduate Fall Majors by College (1st Majors)

	Fall 2018	Fall 2019	Fall 2020	Fall 2021	Fall 2022	One Year % Change	Five Year % Change
Arts Humanities and Social Sciences	192	195	204	197	227	15%	18%
Business	328	303	383	601	635	6%	94%
Education	568	610	629	674	731	9%	29%
Science and Health	298	304	379	632	835	32%	180%
Non-degree and Undeclared	77	88	69	46	38	-17%	-51%
Grand Total	1,463	1,500	1,664	2,150	2,466	15%	69%

Table 10a. Undergraduates by Dorm Resident/Commuter

	Fall 2018	Fall 2019	Fall 2020	Fall 2021	Fall 2022	One Year % Change	Five Year % Change
Dorm Resident	2,167	2,031	1,189	1,320	1,209	-8%	-44%
Commuter	6,568	6,574	6,782	5,899	5,395	-9%	-18%
Undergraduate Total	8,735	8,605	7,971	7,219	6,604	-9%	-24%

Table 10b. Undergraduates by Class

	Fall 2018	Fall 2019	Fall 2020	Fall 2021	Fall 2022	One Year % Change	Five Year % Change
Freshman	2,502	2,494	2,038	1,646	1,360	-17%	-46%
Sophomore	1,557	1,624	1,602	1,288	1,110	-14%	-29%
Junior	2,387	2,171	2,001	1,781	1,709	-4%	-28%
Senior	2,289	2,316	2,330	2,504	2,425	-3%	6%
Undergraduate Total	8,735	8,605	7,971	7,219	6,604	-9%	-24%



FactBook, 2022-2023

Course Sections, Fall 2018 to Fall 2022

William Paterson University

FactBook, 2022-2023

Course Sections, Fall 2018 to Fall 2022

Table of Contents

[Table 1. Course Sections by College, Fall 2018 to Fall 2022](#)

[Table 2. Course Sections by Course Level, Fall 2018 to Fall 2022](#)

[Table 3. Course Sections by Course Level and Delivery Method, Fall 2018 to Fall 2022](#)

[Table 4. Course Sections by College and Level, Fall 2018 to Fall 2022](#)

[Table 5. Course Sections by College and Department, Fall 2018 to Fall 2022](#)

Table 1. Course Sections by College, Fall 2018 to Fall 2022

	Fall 2018			Fall 2019			Fall 2020			Fall 2021			Fall 2022		
College	# Sections	SCH	Avg Size	# Sections	SCH	Avg Size	# Sections	SCH	Avg Size	# Sections	SCH	Avg Size	# Sections	SCH	Avg Size
Arts Humanities and Social Sciences	1211	67,091	19	1145	65,228	20	1025	56,666	19	945	50,517	19	801	45,799	20
Business	227	15,699	23	227	15,383	23	220	14,513	23	254	14,347	20	221	14,021	23
Education	209	7,015	12	226	7,587	12	246	8,612	13	225	7,432	12	207	7,152	13
Science and Health	573	34,151	19	569	33,566	18	564	33,879	19	626	35,723	18	590	35,876	19
Honors College	13	156	4	18	301	11	20	284	16	17	292	16	15	299	17
Exchange Program	1	12	1	3	36	1	1	24	2	1	12	1	4	4	1
Special Programs	81	1,610	20	65	0	27	66	1	22	59	0	22	53	0	19
	2315	125,734	19	2253	122,101	19	2142	113,979	19	2127	108,322	18	1891	103,150	19

Table 2. Course Sections by Course Level, Fall 2018 to Fall 2022

	Fall 2018			Fall 2019			Fall 2020			Fall 2021			Fall 2022		
Course Level	# Sections	SCH	Avg Size	# Sections	SCH	Avg Size	# Sections	SCH	Avg Size	# Sections	SCH	Avg Size	# Sections	SCH	Avg Size
Undergraduate	2012	117,405	20	1934	113,532	21	1787	104,004	20	1651	92,827	20	1417	85,259	21
Graduate	303	8,329	10	319	8,570	9	355	9,975	10	476	15,495	12	476	17,891	14
	2315	125,734	19	2253	122,101	19	2142	113,979	19	2127	108,322	18	1893	103,150	19

Table 3. Course Sections by Course Level and Delivery Method, Fall 2018 to Fall 2022

	Fall 2018			Fall 2019			Fall 2020			Fall 2021			Fall 2022		
	# Sections	SCH	Avg Size	# Sections	SCH	Avg Size	# Sections	SCH	Avg Size	# Sections	SCH	Avg Size	# Sections	SCH	Avg Size
Undergraduate															
Online	189	11,189	20	208	13,117	21	260	16,458	21	358	24,053	23	447	31,175	24
Traditional	1823	106,216	20	1726	100,415	21	1527	87,546	20	1293	68,774	19	970	54,084	20
Graduate															
Online	25	817	11	33	1,025	11	124	3,735	12	246	9,914	15	304	13,753	16
Traditional	278	7,512	9	286	7,545	9	231	6,240	9	230	5,582	8	172	4,138	8
	2315	125,734	19	2253	122,101	19	2142	113,979	19	2127	108,322	18	1893	103,150	19

Table 4. Course Sections by College and Level, Fall 2018 to Fall 2022

	Fall 2018			Fall 2019			Fall 2020			Fall 2021			Fall 2022		
	# Sections	SCH	Avg Size	# Sections	SCH	Avg Size	# Sections	SCH	Avg Size	# Sections	SCH	Avg Size	# Sections	SCH	Avg Size
Arts Humanities and Social Sciences															
Undergraduate	1132	65,419	20	1073	63,573	21	956	54,916	20	870	48,865	20	729	44,005	21
Graduate	79	1,672	7	72	1,655	8	69	1,750	9	75	1,652	8	72	1,794	9
Business															
Undergraduate	192	13,574	24	187	13,381	24	164	12,269	25	151	9,812	22	129	9,204	24
Graduate	35	2,125	20	40	2,003	17	56	2,244	17	103	4,535	18	92	4,817	21
Education															
Undergraduate	106	4,374	14	115	4,778	15	121	5,369	16	86	3,613	15	82	2,800	15
Graduate	103	2,641	9	111	2,809	9	125	3,243	9	139	3,819	10	125	4,352	12
Science and Health															
Undergraduate	487	32,260	20	473	31,463	21	459	31,141	21	467	30,233	20	403	28,947	22
Graduate	86	1,891	8	96	2,103	8	105	2,738	9	159	5,490	12	187	6,929	12

Note: All Honors College, Exchange Program, Special Programs courses are undergraduate.

Table 5. Course Sections by College and Department, Fall 2018 to Fall 2022

	Fall 2018			Fall 2019			Fall 2020			Fall 2021			Fall 2022		
	# Sections	SCH	Avg Size	# Sections	SCH	Avg Size	# Sections	SCH	Avg Size	# Sections	SCH	Avg Size	# Sections	SCH	Avg Size
Arts Humanities and Social Sciences															
Art	84	3,597	15	92	3,921	15	83	3,549	15	81	3,423	14	67	2,712	14
Communication	158	8,304	18	145	7,959	19	121	6,868	19	108	5,788	18	84	4,943	20
Community & Social Justice Std	82	5,529	22	75	5,229	23	71	5,427	25	62	4,616	25	56	4,383	26
English	166	8,903	18	139	7,925	19	126	6,629	17	109	5,697	17	76	4,916	22
History	70	5,496	26	69	5,238	25	58	4,080	23	51	3,519	23	39	2,805	24
Humanities and Social Sciences	1	23	23	1	21	21	1	13	13	1	14	14	.	.	.
Languages & Culture	105	5,529	18	93	4,785	17	71	3,642	17	76	3,885	17	64	3,492	18
Liberal Studies	8	489	20	8	450	19	7	321	15	6	309	17	4	270	23
Music	170	3,657	12	160	3,794	14	153	3,180	12	159	3,211	12	146	3,003	12
Philosophy	46	3,777	27	43	3,555	28	43	3,174	25	31	2,505	27	21	1,860	30
Politics, Legal Std & Urban Sciences	63	3,732	20	56	3,762	22	56	3,324	20	46	2,685	19	35	2,295	22
Psychology	142	10,030	23	148	10,420	23	127	8,920	23	120	8,295	22	121	8,730	24
Sociology	116	8,025	23	116	8,169	23	108	7,539	23	95	6,570	23	88	6,390	24
Business															
Accounting & Law	48	3,591	25	45	3,420	25	44	3,227	25	48	3,042	22	41	2,808	24
Econ, Fin & Global Business	67	5,385	27	72	5,086	24	70	4,739	23	83	4,503	19	68	4,097	21
Mgt Mktg & Prof Sales	112	6,723	20	110	6,878	21	106	6,548	21	123	6,802	20	112	7,116	23
Education															
Educ Leadership & Prof Studies	57	1,491	9	57	1,720	10	76	2,499	12	69	2,080	11	69	2,272	12
Spec Ed Prof Counsl & Dis Stud	67	2,516	13	74	2,830	13	73	2,563	12	66	2,288	12	54	2,429	15
Teacher Education: PreK- 12	85	3,008	12	95	3,037	12	97	3,550	14	90	3,064	13	84	2,451	13

Table 5. Course Sections by College and Department, Fall 2018 to Fall 2022

	Fall 2018			Fall 2019			Fall 2020			Fall 2021			Fall 2022		
	# Sections	SCH	Avg Size	# Sections	SCH	Avg Size	# Sections	SCH	Avg Size	# Sections	SCH	Avg Size	# Sections	SCH	Avg Size
Science and Health															
Biology	57	5,578	25	56	5,517	25	54	5,491	26	52	4,508	22	47	4,672	25
Chemistry	29	2,228	19	31	2,195	18	29	2,231	20	31	2,025	17	28	1,847	17
Communication Disorders	40	1,369	13	45	1,538	12	48	1,729	13	49	1,738	13	49	1,637	12
Computer Science	38	2,578	21	42	2,945	22	37	2,495	21	34	2,110	19	32	2,200	21
Environmental Science	18	1,264	19	16	1,304	22	16	1,118	19	15	884	16	11	828	20
Kinesiology	105	4,754	16	102	4,584	17	103	4,290	15	87	3,768	16	77	3,560	17
Mathematics and Physics	113	7,601	21	91	6,022	20	85	5,573	20	81	5,305	20	67	4,629	21
Nursing	92	3,460	12	104	4,121	13	122	5,630	15	205	10,329	16	214	11,422	17
Public Health	80	5,292	23	81	5,319	22	69	5,295	26	71	5,038	24	65	5,081	26
Science - Integrated	1	27	9	1	21	7	1	27	9	1	18	6	.	.	.



FactBook, 2022-2023

Course Grades, 2017-18 to 2021-22

William Paterson University

FactBook, 2022-2023

Course Grades, 2017-18 to 2021-22

Table of Contents

[Table 1. Undergraduate Grades, by Academic Year](#)

[Table 2. Undergraduate Grades by Delivery Method and Academic Year](#)

[Table 3. Undergraduate Grades by College and Academic Year](#)

[Table 4. Undergraduate Grades by Course Level and Academic Year](#)



Table 1. Undergraduate Grades, by Academic Year

	Total	A	B	C	Pass	DFW
2017-18	81,609	36%	30%	15%	2%	17%
2018-19	80,312	37%	29%	15%	3%	17%
2019-20	81,168	39%	25%	10%	10%	15%
2020-21	75,771	39%	24%	11%	8%	17%
2021-22	68,130	40%	24%	12%	6%	18%

Table 2. Undergraduate Grades by Delivery Method and Academic Year

	Total	A	B	C	Pass	DFW
Online						
2017-18	11,245	37%	29%	14%	0%	20%
2018-19	11,076	37%	28%	14%	0%	21%
2019-20	12,330	41%	27%	11%	3%	18%
2020-21	21,853	44%	26%	11%	2%	17%
2021-22	23,409	44%	26%	11%	1%	18%
Traditional						
2017-18	68,801	35%	30%	16%	3%	16%
2018-19	67,302	36%	29%	15%	3%	16%
2019-20	65,246	41%	27%	11%	8%	14%
2020-21	50,701	40%	25%	12%	7%	17%
2021-22	41,924	40%	25%	13%	4%	17%

Table 3. Undergraduate Grades by College and Academic Year

	Total	A	B	C	Pass	DFW
Arts Humanities and Social Sciences						
2017-18	44,849	38%	31%	14%	2%	16%
2018-19	44,223	38%	30%	14%	2%	17%
2019-20	44,067	42%	27%	10%	6%	16%
2020-21	38,630	42%	24%	11%	4%	19%
2021-22	34,291	42%	24%	12%	2%	19%
Business						
2017-18	10,804	31%	35%	20%	0%	13%
2018-19	10,226	34%	34%	18%	0%	13%
2019-20	9,938	40%	31%	13%	5%	11%
2020-21	9,235	40%	31%	14%	1%	14%
2021-22	7,156	41%	29%	14%	0%	16%
Education						
2017-18	2,536	50%	15%	5%	19%	12%
2018-19	2,954	44%	14%	5%	25%	13%
2019-20	3,184	47%	11%	4%	26%	12%
2020-21	3,622	43%	10%	4%	27%	16%
2021-22	2,573	49%	13%	6%	19%	13%
Science and Health						
2017-18	21,857	31%	29%	17%	3%	20%
2018-19	20,975	33%	27%	17%	3%	20%
2019-20	20,387	38%	27%	13%	7%	15%
2020-21	21,067	39%	27%	13%	6%	15%
2021-22	21,313	40%	27%	13%	4%	16%

Table 4. Undergraduate Grades by Course Level and Academic Year

	Total	A	B	C	Pass	DFW
0999 and Below						
2017-18	402	0%	0%	0%	91%	9%
2018-19	395	0%	0%	0%	88%	12%
2019-20	458	0%	0%	0%	93%	7%
2020-21	418	0%	0%	0%	96%	4%
2021-22	406	0%	0%	0%	86%	14%
1000-Level						
2017-18	26,903	30%	28%	17%	2%	24%
2018-19	27,922	31%	27%	16%	1%	25%
2019-20	26,731	36%	25%	12%	5%	21%
2020-21	22,789	35%	23%	13%	4%	25%
2021-22	19,220	35%	24%	15%	0%	26%
2000-Level						
2017-18	25,821	36%	32%	16%	0%	15%
2018-19	24,489	37%	31%	15%	1%	15%
2019-20	24,174	43%	28%	11%	5%	14%
2020-21	22,500	43%	25%	11%	4%	16%
2021-22	19,665	43%	24%	13%	1%	18%
3000-Level						
2017-18	18,138	39%	33%	14%	2%	12%
2018-19	17,201	41%	31%	14%	3%	11%
2019-20	17,627	45%	28%	10%	7%	10%
2020-21	17,256	44%	27%	12%	4%	13%
2021-22	14,907	44%	28%	12%	3%	13%
4000-Level						
2017-18	8,670	43%	29%	13%	7%	9%
2018-19	8,254	43%	29%	12%	8%	8%
2019-20	8,488	45%	27%	9%	13%	7%
2020-21	9,143	45%	27%	10%	10%	8%
2021-22	9,682	47%	26%	9%	11%	8%

	Total	A	B	C	Pass	DFW
5000 and Above Level						
2017-18	112	54%	34%	3%	4%	6%
2018-19	117	75%	22%	2%	1%	0%
2019-20	98	68%	22%	2%	4%	3%
2020-21	448	72%	21%	1%	0%	6%
2021-22	1,453	61%	27%	5%	0%	6%



FactBook, 2022-2023

Retention and Graduation, Fall Cohorts 2012-2022

William Paterson University

FactBook, 2022-2023

Retention and Graduation, Fall Cohorts 2012-2022

Table of Contents

[Table 1. Retention and Graduation Rates, First-Time in College, Full-Time](#)

[Table 2. Retention and Graduation Rates, Transfer Students, Full-Time and Part-Time](#)



Table 1. Retention and Graduation Rates, First-Time in College, Full-Time

[illegible]

Table 2. Retention and Graduation Rates, Transfer Students, Full-Time and Part-Time

[illegible]



FactBook, 2022-2023

Degrees Conferred, 2017-18 to 2021-22



William Paterson University

FactBook, 2022-2023

Degrees Conferred, 2017-18 to 2021-22

Table of Contents

[Table 1. Degrees Conferred by Level \(1st Major\)](#)

[Table 2. Degrees Conferred by Level and gender \(1st Major\)](#)

[Table 3. Degrees Conferred by Level and Race \(1st Major\)](#)

[Table 4. Undergraduate Bachelor's Degrees Conferred \(1st Major\) by College and Degree](#)

[Table 5. Graduate Degrees Conferred \(1st Major\) by College and Degree](#)



Table 1. Degrees Conferred by Level (1st Major)

	2017-18	2018-19	2019-20	2020-21	2021-22	% Change
Graduate						
Masters	408	394	416	419	641	57%
Doctorate	8	4	6	7	14	75%
Certificate	79	81	75	71	47	-41%
	495	479	497	497	702	42%
Undergraduate						
Bachelors	2,035	1,784	1,940	1,756	1,855	-9%
Certificate	.	.	3	2	2	.
	2,035	1,784	1,943	1,758	1,857	-9%
Total	2,530	2,263	2,440	2,255	2,559	1%

Note: This table reports counts of degrees conferred for all terms of the academic year. Recipients are counted for each award received, excluding awards for second majors in the same term.

Table 2. Degrees Conferred by Level and gender (1st Major)

	2017-18	2018-19	2019-20	2020-21	2021-22	% Change
Graduate						
Female	360	342	375	366	518	44%
Male	135	137	122	131	184	36%
	495	479	497	497	702	42%
Undergraduate						
Female	1,155	1,045	1,134	992	1,128	-2%
Male	877	736	808	766	729	-17%
Unknown	3	3	1	.	.	.
	2,035	1,784	1,943	1,758	1,857	-9%
Total	2,530	2,263	2,440	2,255	2,559	1%

Note: This table reports counts of degrees conferred for all terms of the academic year. Recipients are counted for each award received, excluding awards for second majors in the same term.

Table 3. Degrees Conferred by Level and Race (1st Major)

	2017-18	2018-19	2019-20	2020-21	2021-22	% Change
Graduate						
Asian	26	28	29	39	44	69%
Black	37	34	38	33	76	105%
Hispanic	78	94	107	111	159	104%
Multi-Racial	13	17	16	14	22	69%
White	297	281	285	281	383	29%
International	33	16	15	12	10	-70%
Unknown	11	9	7	7	8	-27%
	495	479	497	497	702	42%
Undergraduate						
Asian	134	134	146	138	143	7%
Black	290	250	297	264	279	-4%
Hawaiian/Pacific Islander	2	1	1	.	1	-50%
Hispanic	590	531	563	556	569	-4%
Multi-Racial	58	51	64	50	73	26%
Native American	2	2	2	4	1	-50%
White	913	767	846	711	755	-17%
International	10	8	8	10	17	70%
Unknown	36	40	16	25	19	-47%
	2,035	1,784	1,943	1,758	1,857	-9%
Total	2,530	2,263	2,440	2,255	2,559	1%

Note: This table reports counts of degrees conferred for all terms of the academic year. Recipients are counted for each award received, excluding awards for second majors in the same term.

Table 4. Undergraduate Bachelor's Degrees Conferred (1st Major) by College and Degree

	2017-18	2018-19	2019-20	2020-21	2021-22	% Change
Arts Humanities and Social Sciences						
Bachelor of Arts	944	819	862	758	717	-24%
Bachelor of Fine Arts	37	25	32	37	34	-8%
Bachelor of Music	39	21	28	23	41	5%
	1,018	864	922	818	792	-22%
Business						
Bachelor of Arts	18	13	15	10	7	-61%
Bachelor of Science	411	359	375	320	288	-30%
	429	372	390	330	295	-31%
Education						
Bachelor of Arts	73	64	63	77	65	-11%
	73	64	63	77	65	-11%
Science and Health						
Bachelor of Arts	87	87	105	94	91	5%
Bachelor of Science	426	396	460	437	612	44%
Certificate	.	.	3	2	2	.
	513	483	568	533	705	37%
Total	2,035	1,784	1,943	1,758	1,857	-9%

Note: This table reports counts of degrees conferred for all terms of the academic year. Recipients are counted for each award received, excluding awards for second majors in the same term.

Table 5. Graduate Degrees Conferred (1st Major) by College and Degree

	2017-18	2018-19	2019-20	2020-21	2021-22	% Change
Arts Humanities and Social Sciences						
Doctor of Psychology	.	.	.	4	8	.
Master of Arts	56	46	39	31	45	-20%
Master of Fine Arts	12	12	8	13	11	-8%
Master of Music	11	8	8	7	9	-18%
Master of Public Policy	2	.
Certificate	11	8	5	7	3	-73%
	90	74	60	62	78	-13%
Business						
Master of Business Admin.	95	101	97	92	208	119%
Master of Science	.	.	20	9	13	.
Certificate	.	.	3	.	.	.
	95	101	120	101	221	133%
Education						
Master of Arts	13	19	11	14	14	8%
Master of Arts in Teaching	28	25	21	17	23	-18%
Master of Education	118	97	133	153	185	57%
Certificate	66	62	54	46	32	-52%
	225	203	219	230	254	13%
Science and Health						
Doctor of Nursing Practice	8	4	6	3	6	-25%
Master of Science	49	50	58	48	72	47%
Master of Science in Nursing	26	36	21	35	59	127%
Certificate	2	11	13	18	12	500%
	85	101	98	104	149	75%
Total	495	479	497	497	702	42%

Note: This table reports counts of degrees conferred for all terms of the academic year. Recipients are counted for each award received, excluding awards for second majors in the same term.



FactBook, 2022-2023

Staff and Faculty

William Paterson University

FactBook, 2022-2023

Staff and Faculty

Table of Contents

[Table 1. Full Time Employees by Occupational Category](#)

[Table 2. Full Time Faculty by Department and Tenure Status](#)

[Table 3. Full Time Faculty by Department and Rank](#)

Table 1. Full Time Employees by Occupational Category*

	Fall 2018		Fall 2019		Fall 2020		Fall 2021		Fall 2022	
	N	%	N	%	N	%	N	%	N	%
Instructional Faculty	403	35.4%	391	34.9%	377	34.4%	353	35.1%	287	32.2%
Archivists, Curators, and Museum Technicians	3	0.3%	2	0.2%	2	0.2%	1	0.1%	2	0.2%
Business and Financial Operations Occupations	62	5.4%	71	6.3%	63	5.7%	48	4.8%	43	4.8%
Community and Social Service Occupations, Arts, Design, En	99	8.7%	97	8.7%	100	9.1%	98	9.7%	104	11.7%
Computer, Engineering, and Science Occupations	73	6.4%	72	6.4%	73	6.7%	67	6.7%	62	7.0%
Healthcare Practitioners and Technical Occupations	9	0.8%	9	0.8%	9	0.8%	9	0.9%	10	1.1%
Librarians	12	1.1%	12	1.1%	13	1.2%	13	1.3%	11	1.2%
Library Technicians	9	0.8%	8	0.7%	8	0.7%	9	0.9%	7	0.8%
Management Occupations	51	4.5%	54	4.8%	65	5.9%	57	5.7%	55	6.2%
Office and Administrative Support Occupations	216	19.0%	205	18.3%	196	17.9%	175	17.4%	157	17.6%
Other Teachers and Instructors	5	0.4%	4	0.4%	4	0.4%	4	0.4%	4	0.4%
Postsecondary Teachers	1	0.1%							8	0.9%
Service Occupations	195	17.1%	194	17.3%	186	17.0%	173	17.2%	141	15.8%
Total	1138	1	1119	1	1096	1	1007	1	891	1

*2022 data are preliminary until validation through submission of IPEDS HR in Spring 2023

Table 2. Full Time Faculty by Department and Tenure Status*

	Tenured	Tenure Track	Not TT	Total
Accounting & Law	7	1		8
Art	10	2	2	14
Biology	11	1	1	13
Chemistry	4			4
Comm Disorders and Sciences	2	1	1	4
Communication	13	1		14
Community & Social Justice	6	1	1	8
Computer Science	6	2		8
Econ, Fin & Global Business	11		1	12
Ed Leadership and Prof Studies	11	2	1	14
English	14		2	16
Environmental Science	4			4
History	10			10
Kinesiology	10	1		11
Languages & Culture	8			8
Mathematical Sciences	10			10
Mgmt. Marketing & Sales	14	4		18
Music	11	2	2	15
Nursing	9	5	6	20
Philosophy	3	1		4
Politics Legal & Urban Sci	7	1		8
Psychology	17	3	1	21
Public Health	5		2	7
Sociology and Criminal Justice	11	3	2	16
Sp Ed Cnsl & Dis Studies	8	1		9
Teacher Ed: PreK-12	10	1		11
Total	232	33	22	287

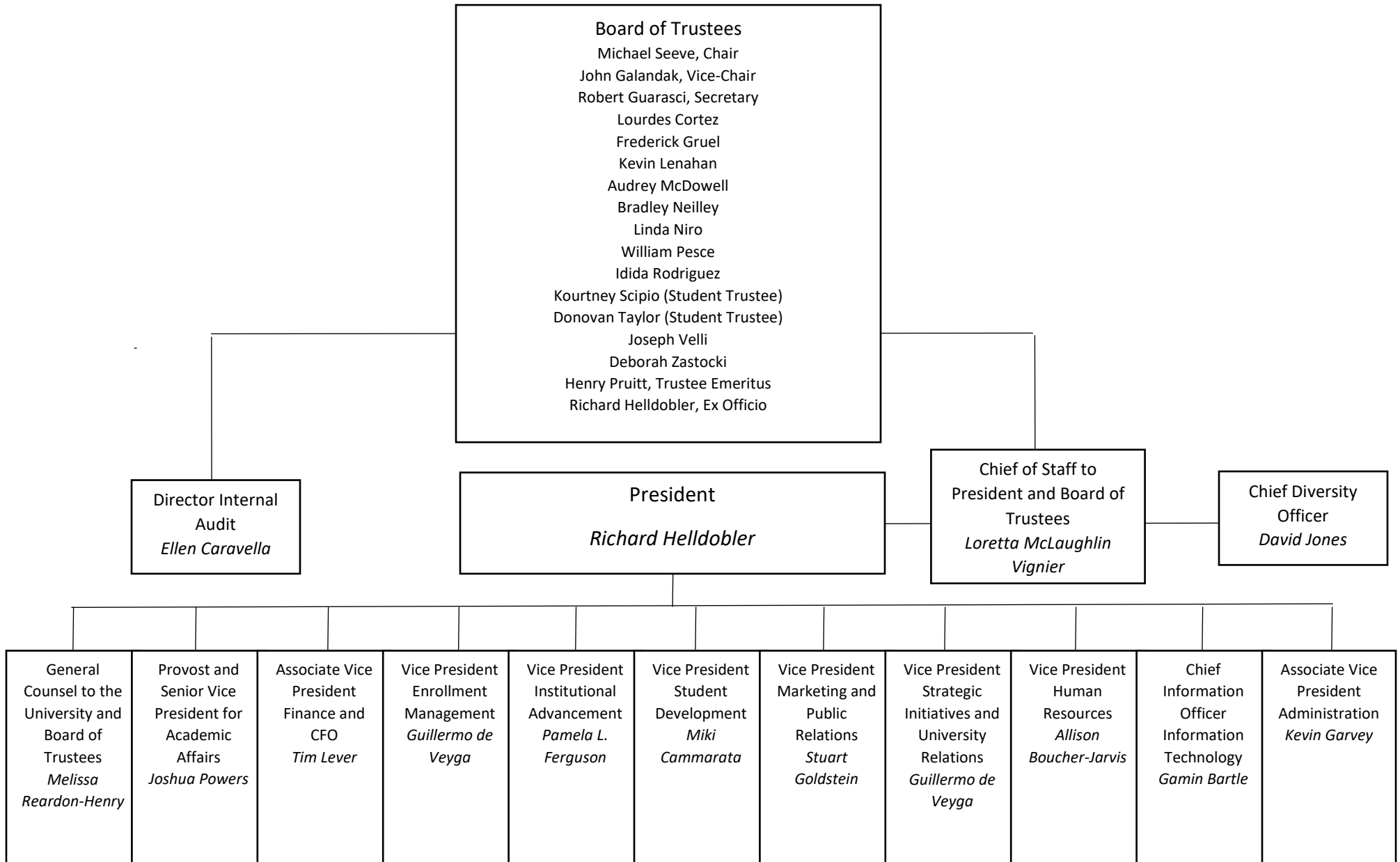
*2022 data are preliminary until validation through submission of IPEDS HR in Spring 2023

Table 3. Full Time Faculty by Department and Rank*

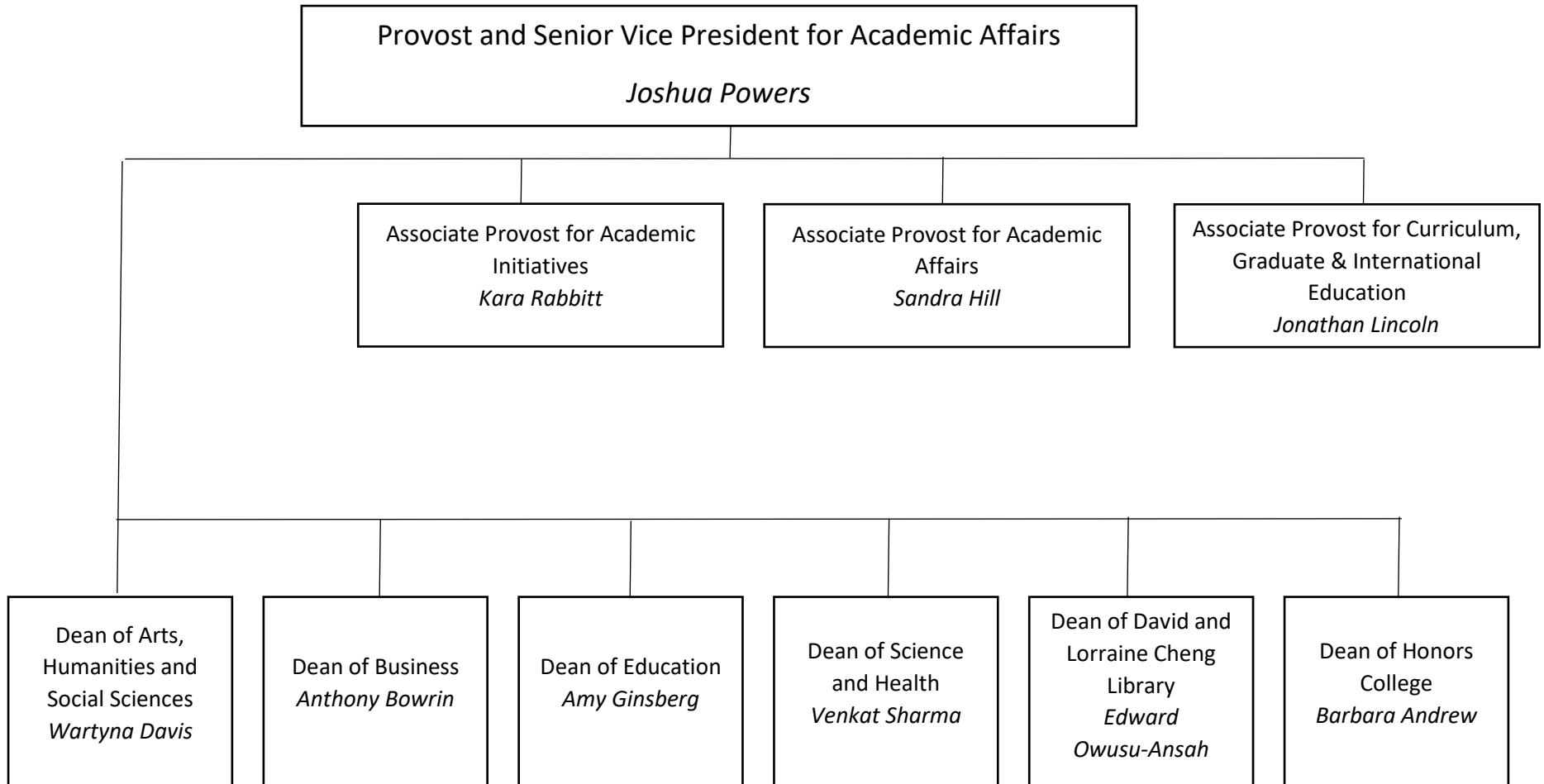
	Professor	Associate Professor	Assistant Professor	Instructor	NTPP	Total
Accounting & Law	5	2	1			8
Art	8	2	2		2	14
Biology	9	2	1	1		13
Chemistry	3	1				4
Comm Disorders and Sciences	2		1	1		4
Communication	10	3	1			14
Community & Social Justice	3	3	1		1	8
Computer Science	5	1	2			8
Econ, Fin & Global Business	8	3			1	12
Ed Leadership and Prof Studies	6	4	3		1	14
English	8	6			2	16
Environmental Science	3		1			4
History	8	2				10
Kinesiology	8	2	1			11
Languages & Culture	5	3				8
Mathematical Sciences	10					10
Mgmt. Marketing & Sales	11	3	4			18
Music	8	3	4			15
Nursing	5	3	6		6	20
Philosophy	2	1	1			4
Politics Legal & Urban Sci	4	3	1			8
Psychology	13	5	2		1	21
Public Health	3	2		2		7
Sociology and Criminal Justice	8	4	2		2	16
Sp Ed Cnsl & Dis Studies	5	3	1			9
Teacher Ed: PreK-12	7	3	1			11
Total	167	64	36	4	16	287

*2022 data are preliminary until validation through submission of IPEDS HR in Spring 2023

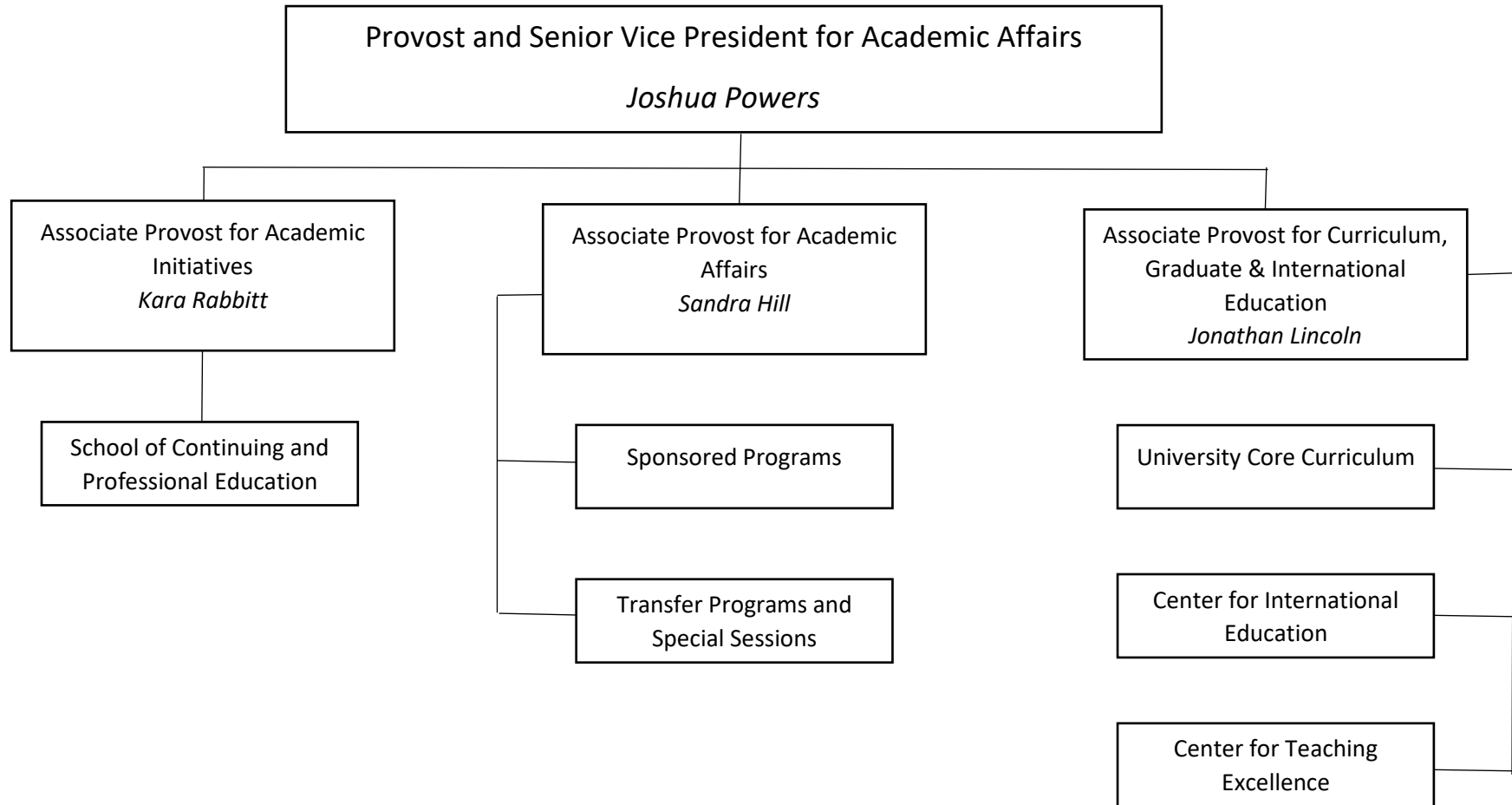
THE WILLIAM PATERSON UNIVERSITY OF NEW JERSEY



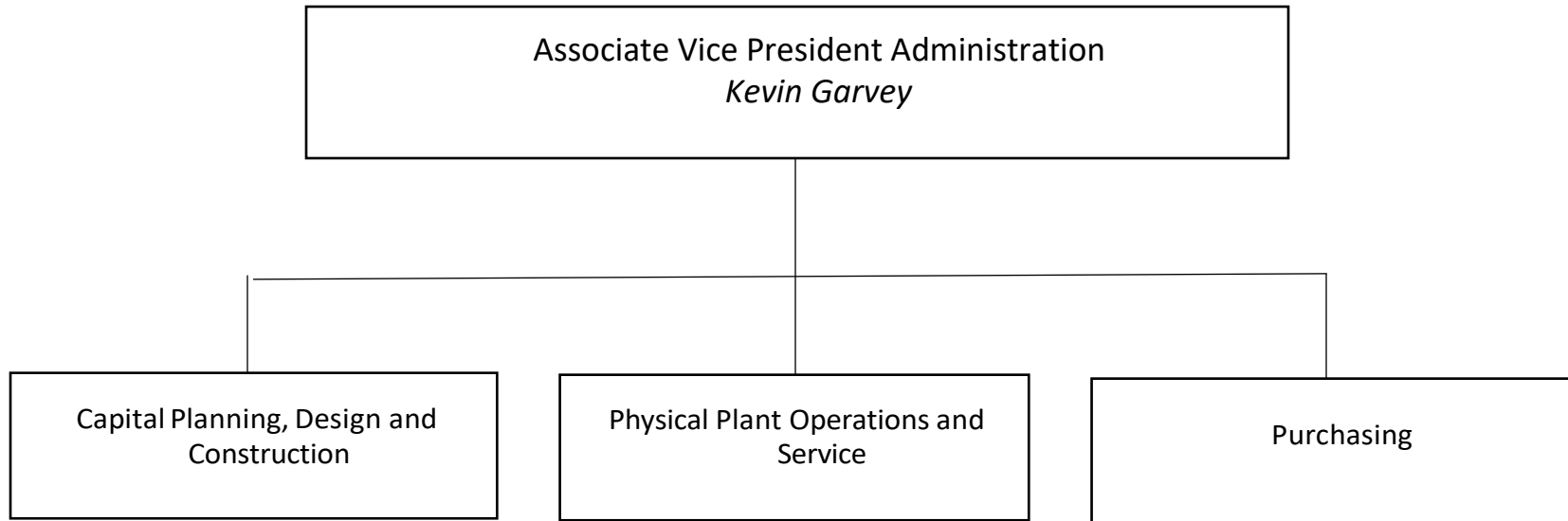
DIVISION OF ACADEMIC AFFAIRS - OVERVIEW



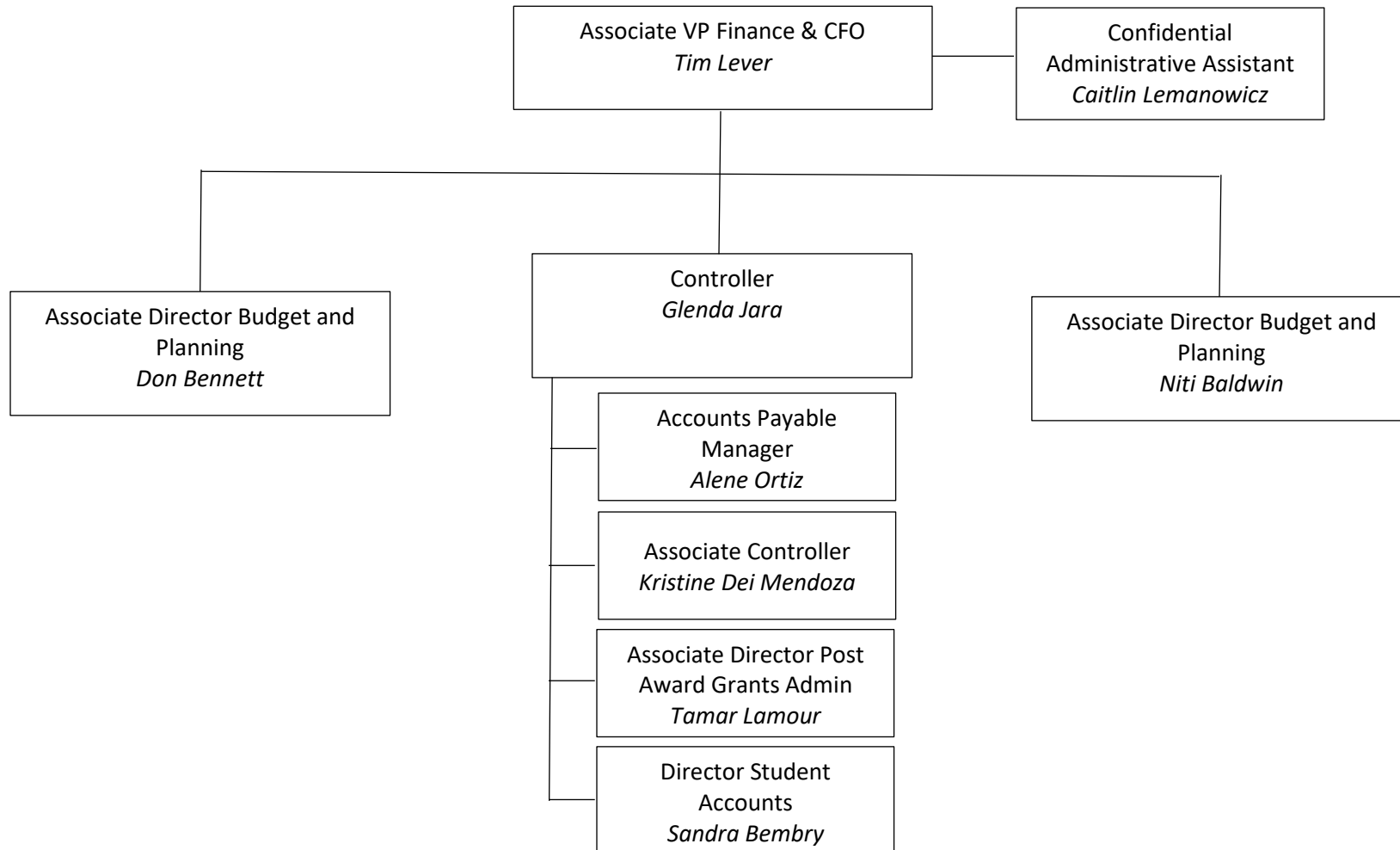
DIVISION OF ACADEMIC AFFAIRS – PROVOST OFFICE



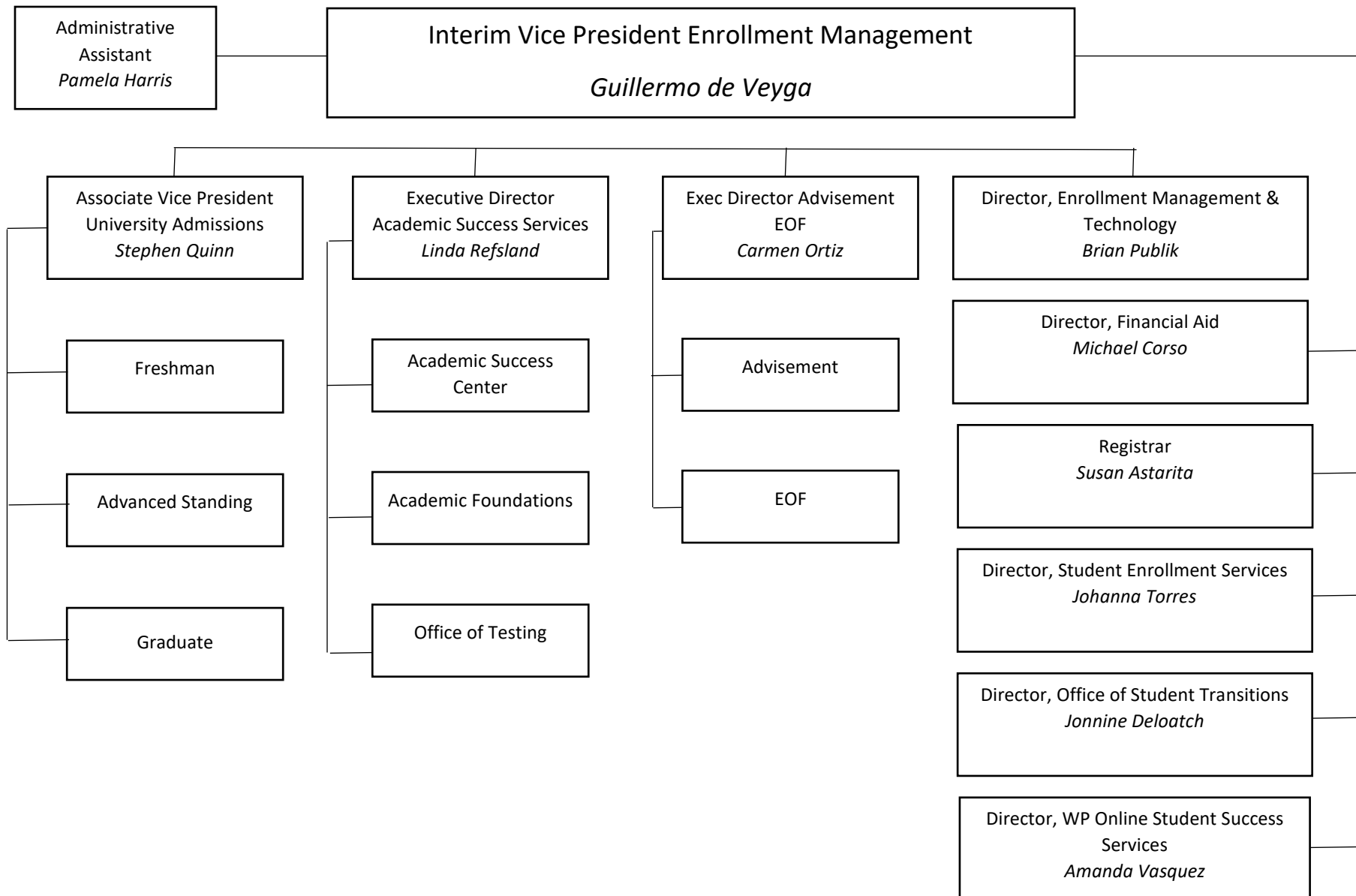
DIVISION OF ADMINISTRATION, CAPITAL PLANNING, AND PHYSICAL PLANT OPERATIONS



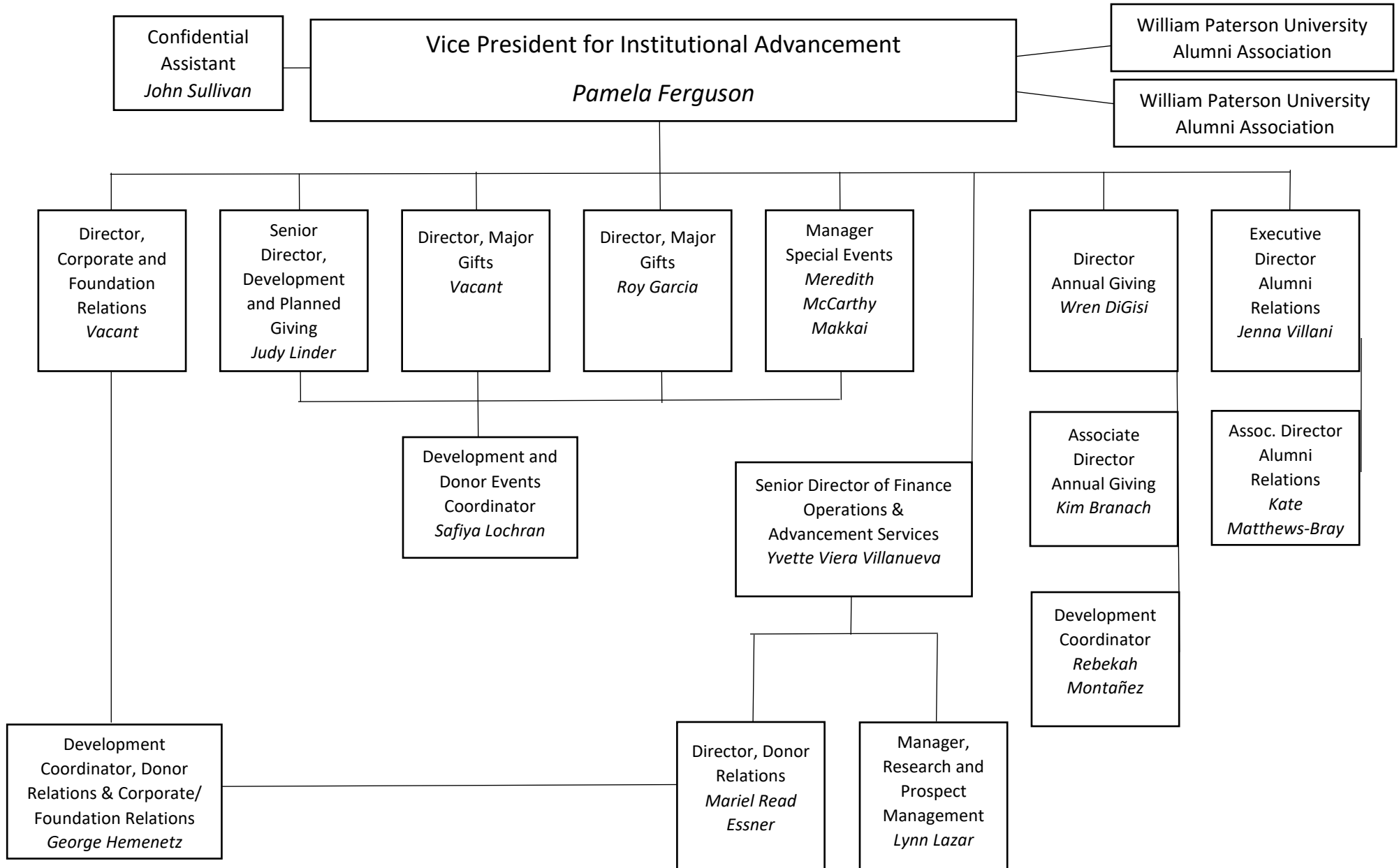
DIVISION OF FINANCE



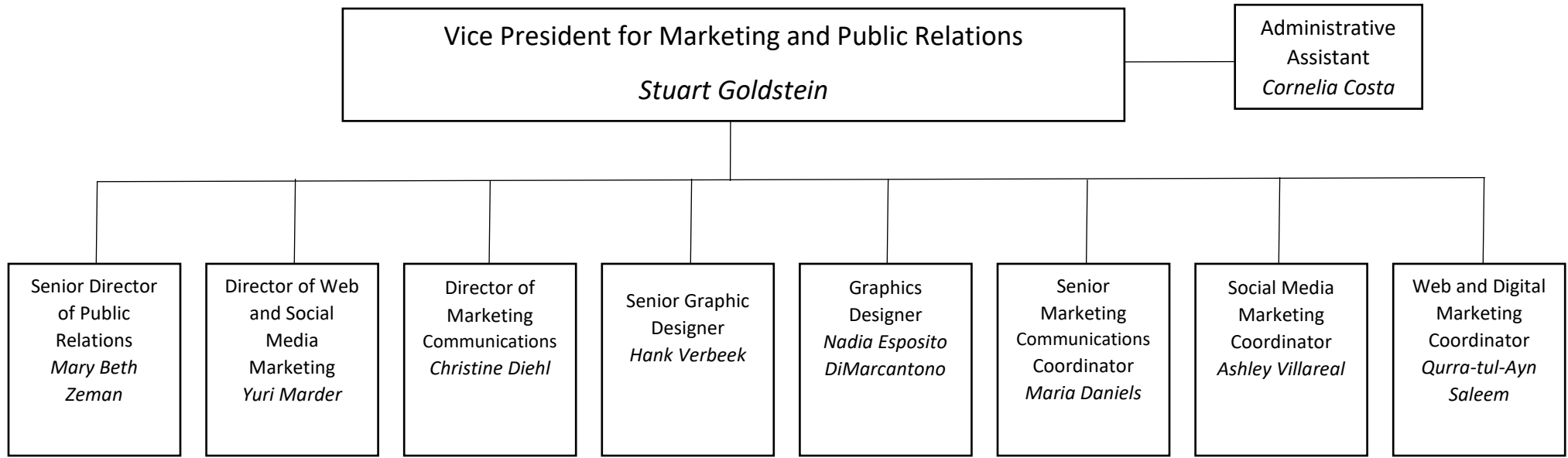
DIVISION OF ENROLLMENT MANAGEMENT



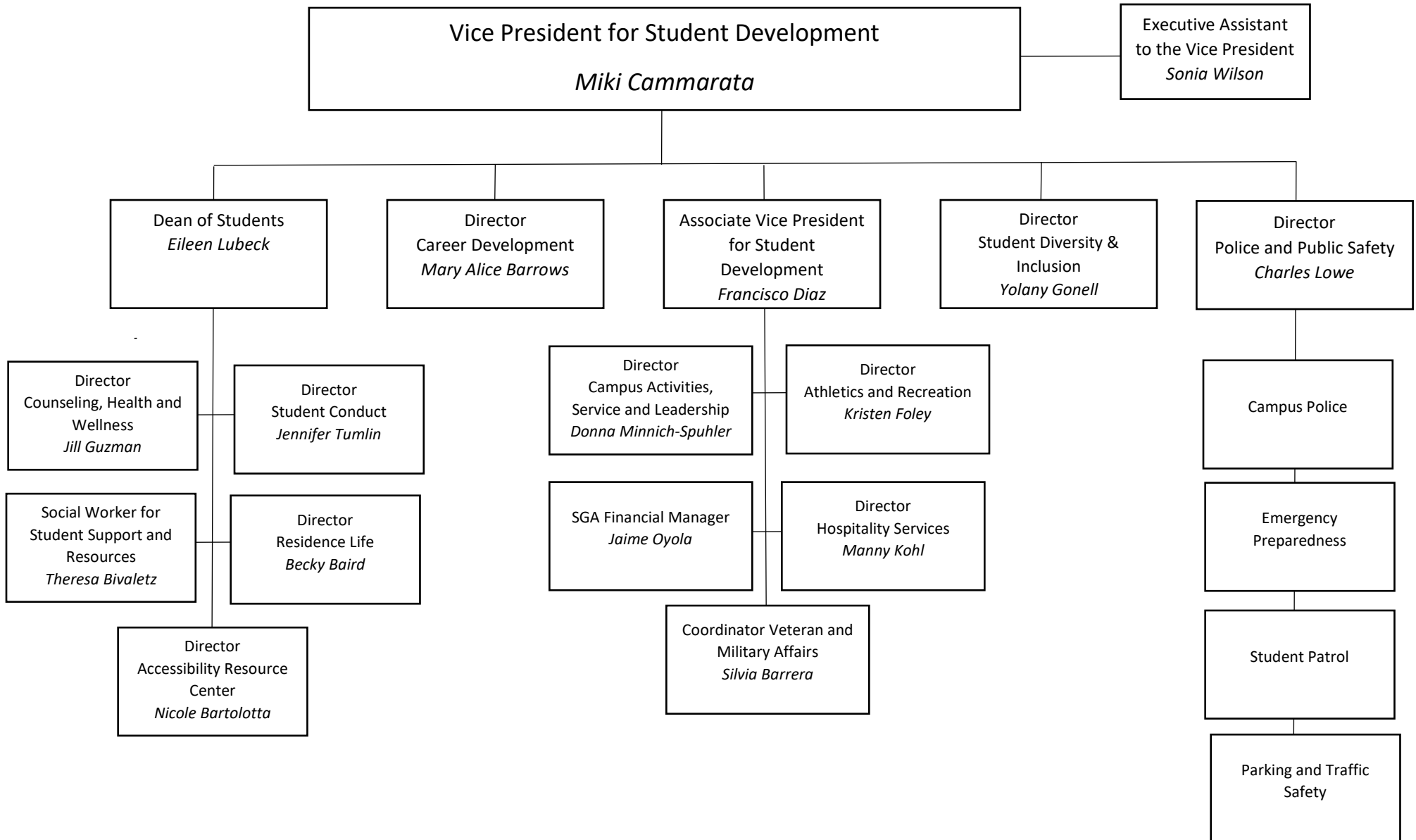
DIVISION OF INSTITUTIONAL ADVANCEMENT



DIVISION OF MARKETING AND PUBLIC RELATIONS



DIVISION OF STUDENT DEVELOPMENT



DIVISION OF STRATEGIC INITIATIVES AND UNIVERSITY RELATIONS

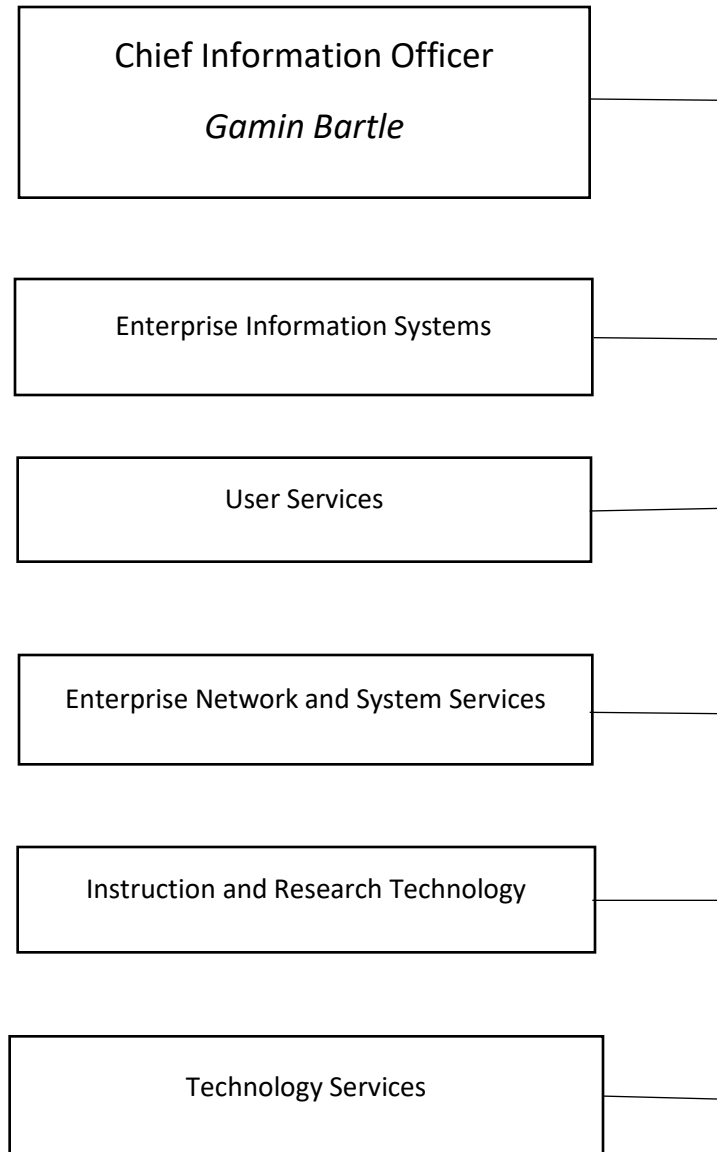
Vice President for Strategic Initiatives and University
Relations

Guillermo de Veyga

Assistant VP of Institutional
Effectiveness, Assessment,
and Planning

Sue Gerber

DIVISION OF INFORMATION TECHNOLOGY



DIVISION OF HUMAN RESOURCES

