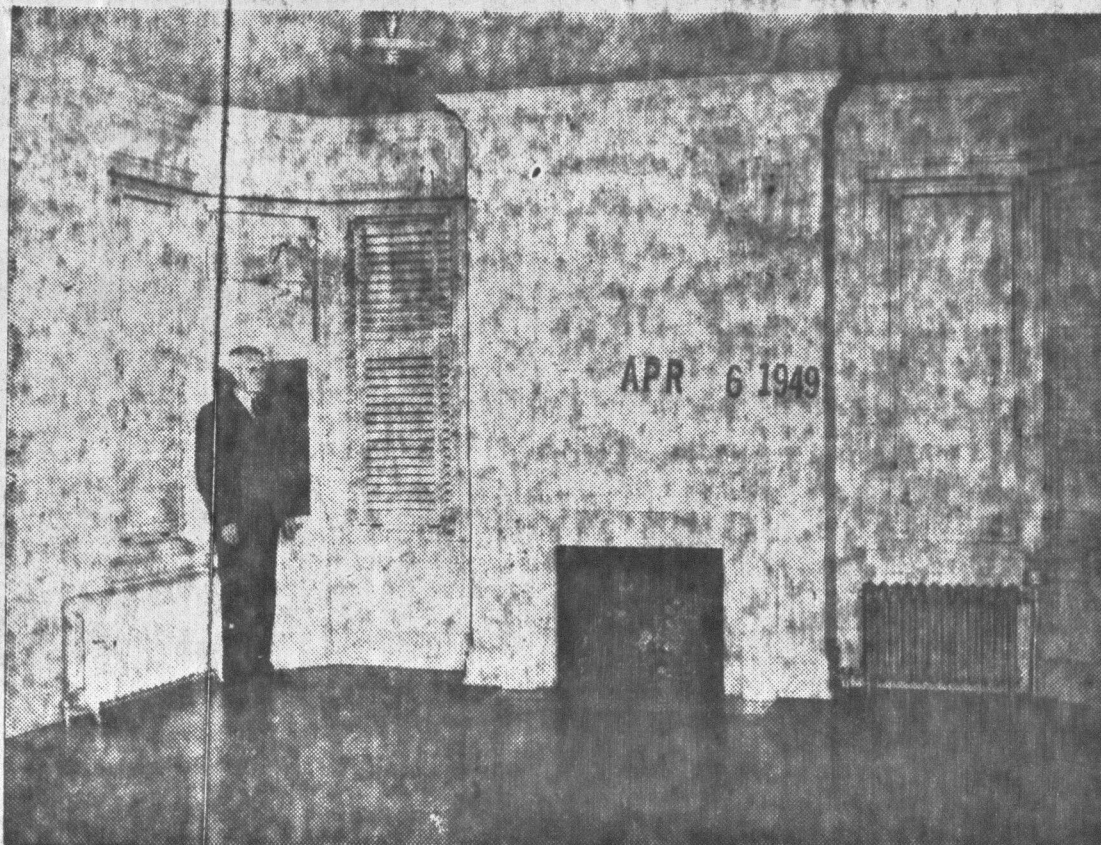


April 6, 1949
Pat. News Library
Hobart Es

Debut as

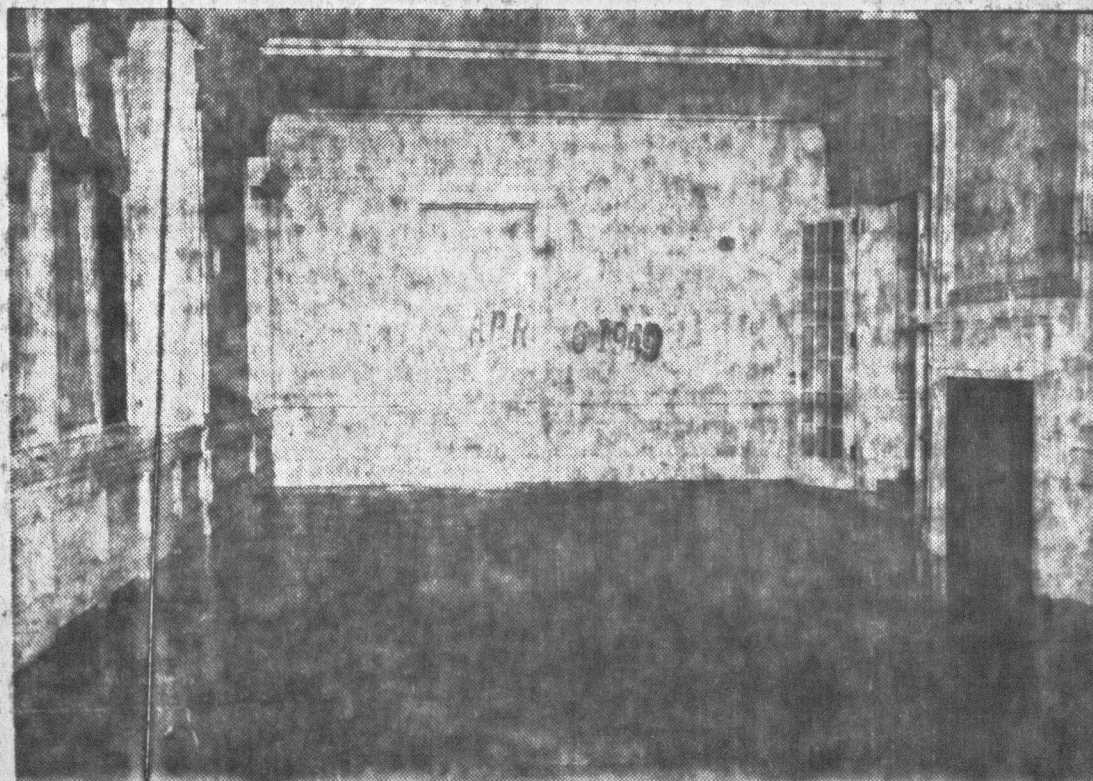
Tom

Dr. Wightman Inspects a Prospective Classroom



PRESENT PLANS of the State Board of Education call for the alteration of the Hobart Mansion into administrative offices, a library, browsing rooms, and a number of classrooms. Here Dr. Clair S. Wightman, president of the Paterson State Teachers College, inspects a large room, complete with fireplace, which will be utilized for a classroom. The room is a former bedroom. A suggestion by a reporter that the room has still not seen the last of sleeping occupants brought a smile to the face of the college prexy.

A View of the Ballroom, Slated for Library Usage

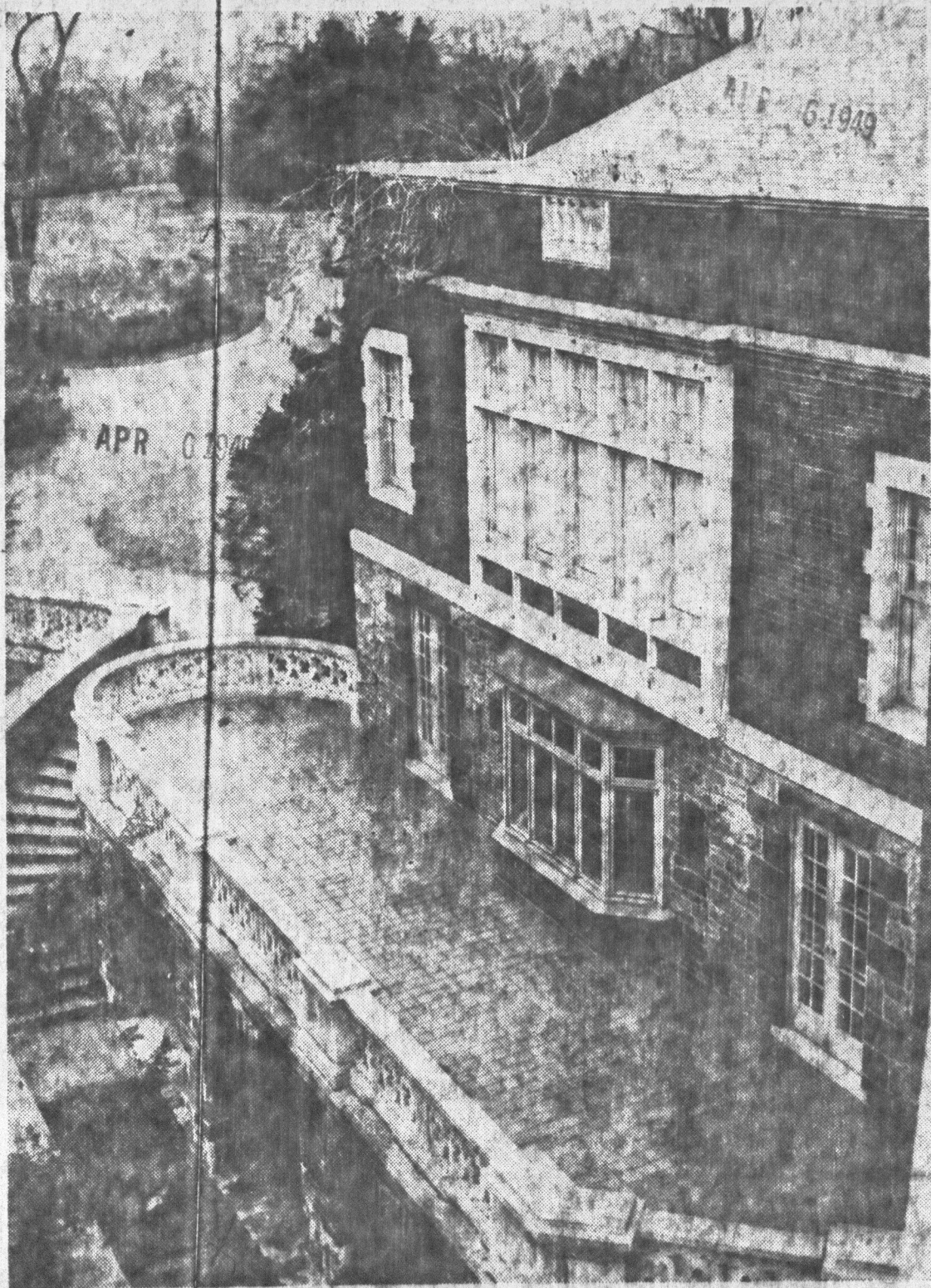


ITS
gara
and
for

EVIL
tranc
stude

from
serve
A
the N
Washi
shown
The
cha

Howard *State to Make Debut* **College Site**
Tomorrow with Meeting of Future Teachers



Evening News Photo
 ONE OF several stone terraces of the Hobart Mansion, this beauty spot leads directly into what will be the main office. The terrace overlooks the rolling lawns and flower beds which will become the campus of the new Paterson State Teachers College. Prospective students, awaiting admission in the college, will one day in the near future, have a pleasant waiting-room (weather permitting) to pass the time until the registrar is free to see them.

(See Picture on Page 29)
 A 220-acre Hobart estate, housing what is perhaps the finest mansion in Passaic County, will make its debut as a public place tomorrow afternoon when its new

owner, the Paterson State Teachers College, plays host to the North Jersey conference of the Future Teachers of America. Thereafter, according to Dr. Clair S. Wightman, president of the college, the

mansion and campus will be utilized for seminars, conferences, and class events, such as dances, until the site is readied for occupancy by the students of the

(Continued on Page 29, Col. 1)

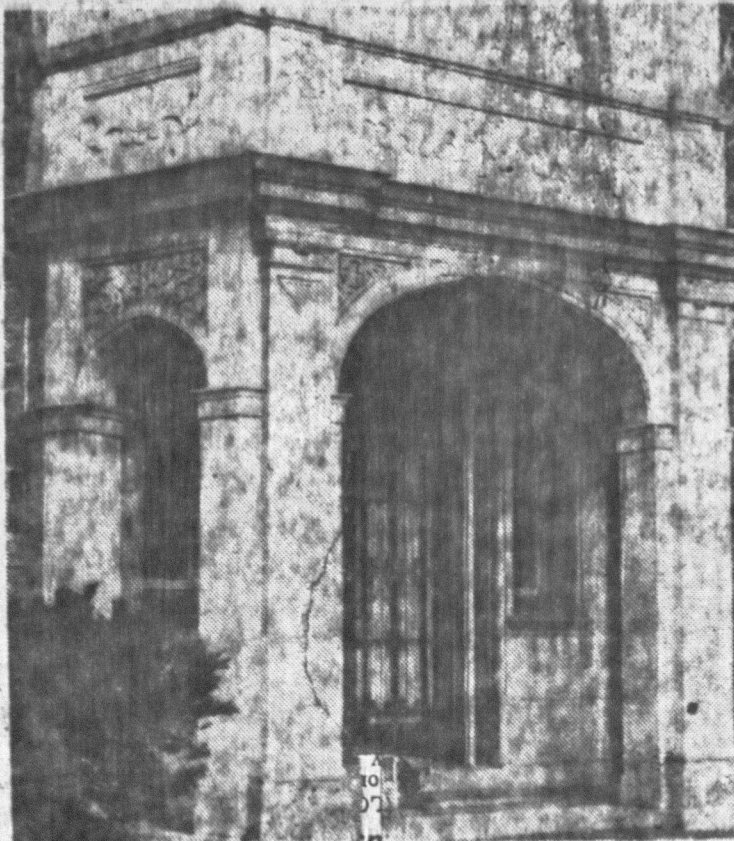
April 6, 1949
Paterson News Lib

Now a Garage; to Be Cafeteria



ITSELF A home for several employe families, the Hobart Estate garage (seen above) will be converted into a first floor cafeteria and adjoining smoking room. No plans have been completed as yet for utilizing the many rooms on the second floor of the building.

Entrance to Future College



EVIDENCE of the beauty of Hobart Manor is the main entrance. In coming years, thousands of Passaic and Bergen County students will file through this gateway to register for a university training within commuter distance of their own homes.

from 18 Newark Ave. Cioffi will serve as chairman of the panel.

A film on teaching furnished by the National Education Association, Washington, D. C., will also be shown.

The president of Paterson State's chapter of Future Teachers of America, Miss Miriam Gorman, will speak to the conference about the purpose of FTA and will explain how FTA chapters can be organized in high schools. Miss Gorman is a sophomore general elementary student from 3 Chester Pl., Englewood.

40-Room Mansion Makes Public

for social events.

and main dining room lead into the b

THE 40-ROOM Hobart Mansion, which was erected in future tenant, plays host to the career as a public institution.

Hobart Estate to Make Debut as College

(Continued from Page 1)

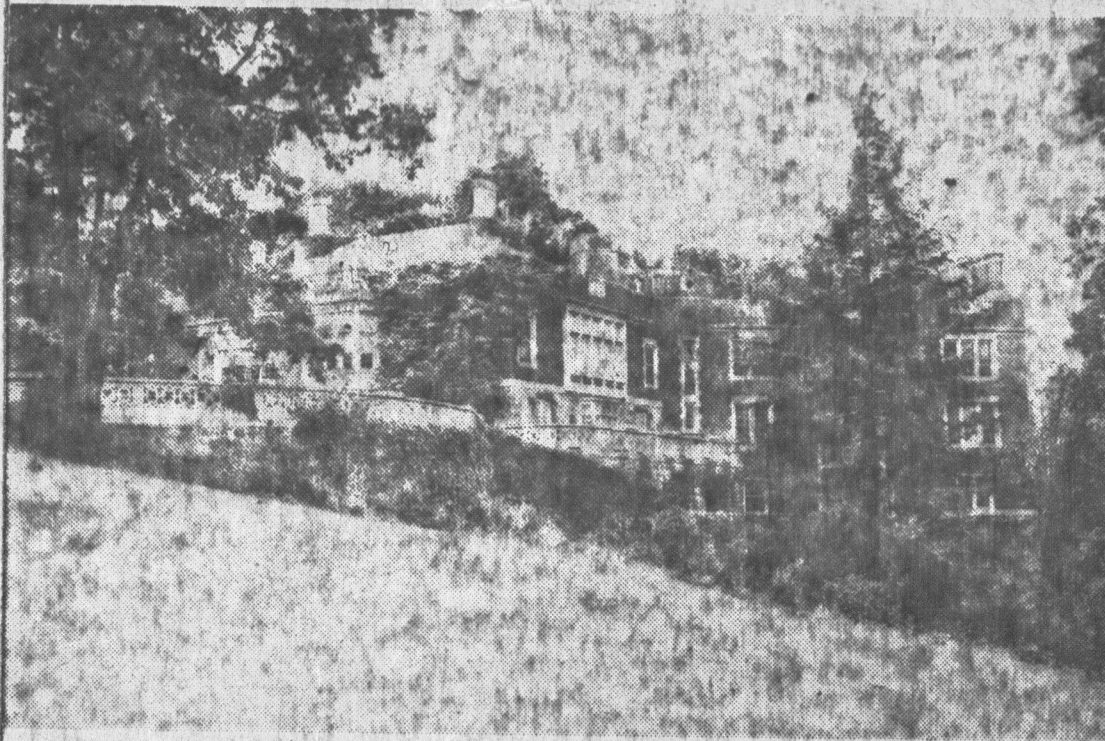
college in September, 1950. The Garret A. Hobart, Jr. estate, located on Pompton Road, Wayne Township and Haledon, purchased last year by the Board of Education for college use at a cost of \$200,000. The keys to the estate were turned over to Dr. Wightman, appropriation of \$1,000,000 been set aside by the State Legislature, obtained through the efforts of former State Senator Charles K. Barton, to bring reality the dream of Passaic.

CANT SIT PIN-WORMS cause Fidget and that awful ITCH!

Loosing sleep, almost going mad because of a tormenting, embarrassing rectal itching may well be a warning sign of Worms, nasty creatures that live and inside the human body. And this condition can cause more serious trouble, even internal inflammation and bleed. There's no need to take chances. This nasty pest, a new, scientific treatment from Pin-Worms, P-W contains a medically-approved drug that destroys Pin-Worms in the intestine. So don't gamble with Pin-Worms. Just remove them from the body. Here's a sign of infection, ask your doctor for P-W, the small, easy-to-take tablets. P-W remedies for over 100 years. Believe that! P-W © for Pin-Worms.

and senior halls. The library and main dining room lead into the ballroom at right angle, making it for social events.

40-Room Mansion Makes Public Debut



Evening News Photo

THE 40-ROOM Hobart Mansion, sitting atop Gaede's Hill in Wayne Township will begin its new career as a public institution Thursday when the Paterson State Teachers College, its new owner and future tenant, plays host to the North Jersey conference of the Future Teachers of America. The mansion, which was erected in 1915 by the late Park Commissioner Garret A. Hobart, Jr., is the main building in the 220-acre estate purchased by the State Board of Education last year for \$200,000.

Hobart Estate to Make Debut as College

(Continued from Page 1)

college in September, 1950.

The Garret A. Hobart, Jr. Estate, located on Pompton Road in Wayne Township and Haledon, was purchased last year by the State Board of Education for college usage at a cost of \$200,000. Last week, the keys to the estate were turned over to Dr. Wightman. An appropriation of \$1,000,000 has been set aside by the State Legislature, obtained through the efforts of former State Senator Charles K. Barton, to bring to reality the dream of Passaic and

Bergen County residents for a college of their own.

New Building

The first order of business at hand, Dr. Wightman said, will be the construction of an additional building, near the mansion, for the housing of more class-rooms. Plans for this building are being drawn up by Architect Lawrence Licht, of Englewood, under the direction of the State Board of Education.

The 40-room mansion will be altered to provide administrative offices, the college library, social and reading rooms, and a number of class-rooms. In some cases, present rooms will be enlarged and joined to create the classrooms.

The Hobart Estate garage will be converted into a cafeteria and smoking room. No plans have been completed for usage of the rooms above the huge garage. During the time the estate was occupied by the Garret A. Hobart, Jr. family, these upper rooms housed the families of three employees.

What will be done with the carriage house, the Gaede Barn, and other smaller buildings on the 220-acre estate is also still under discussion. Dr. Wightman suggested that art classes might find suitable quarters in the large carriage house.

Rutgers Shares College

At the present time, State Board of Education plans call for the use of the estate by both the Paterson State Teachers College and by Rutgers University Extension College, on the same basis as Rutgers is now installed in the State Teachers College on 19th Ave. In an interview with the Evening News last July, Dr. John H. Bosshart, State Commissioner of Education, said that the president of Paterson

State Teachers College will be in charge of the estate and college and that Rutgers University will co-ordinate their extensive college curriculum at the site through a "liaison dean".

Plans for the use of the college by both the state teachers division and Rutgers, however, are flexible and Dr. Bosshart said future developments will be determined by the needs of the area.

20 Schools Invited

More than 100 guests of the college are expected to be on hand for tomorrow's Future Teachers of America conference. According to Dr. Wightman, student representatives from 20 Passaic and Bergen County High Schools will attend and invitations have been extended to all prospective freshman who have applied for Fall admission to Paterson State. The sponsor is the Robert H. Morrison chapter of the F.T.A.

Dr. Wightman will give the welcoming address as well as serve as chairman of a panel discussion on teaching with Howard L. Haas and Miss Alice M. Meeker Haas, assistant professor of business education and guidance coordinator, will represent the business education department. The general elementary and kindergarten-primary departments will be represented by Miss Meeker, who is assistant professor of education.

A panel discussion on "Life at College" will be conducted by the following Paterson State students: Joseph Cioffi, of 428 E 25th St., a senior in General Elementary curriculum; Anthony J. Lama, of 105 Hunter St., Lodi, a sophomore; and John J. Donald, president of the Student Government Association and a business education junior

CAN'T SIT! PIN-WORMS cause Fidgeting and that awful ITCH!

Losing sleep, almost going mad because of a tormenting, embarrassing rectal itch? This may well be a warning sign of Pin-Worms, ugly creatures that live and grow inside the human body. And this common condition can cause more serious trouble...even internal inflammation and bleeding.

There's no need to take chances with this nasty pest. A new, scientific treatment—Jayne's P-W Vermifuge—now offers real relief from Pin-Worms. P-W contains a tested, medically-approved drug that destroys Pin-Worms in the intestine and removes them from the body.

So don't gamble with Pin-Worms. At the first sign of infection, ask your druggist for P-W, the small, easy-to-take tablets perfected by the famous Jayne Co., specialists in worm remedies for over 100 years.

That Itch: P-W © for Pin-Worms!