



Campus chapel burglarized; culprit leaves behind clues

By Laura Rega
Staff Writer

The man who allegedly burglarized the Jesus Christ Prince of Peace Chapel on July 2 doesn't have a prayer.

He dropped an I.D. card on the way out, the one listing his addresses.

"Obviously it was not the smartest of all people," said Meghan Callahan, associate campus minister.

The I.D. card showed two addresses and police in both towns are waiting for the man's return, said Callahan. The suspect has not returned to either address she said police informed her.

The theft occurred some time at 6 p.m. on July 2, the time Callahan locked up for the night. When she returned the next morning she found two broken doors in the chapel and \$500 missing from the poor box that was going to be donated to Eva's Kitchen in Paterson. Damage to the chapel doors is estimated at more than \$5,000.

The side door to the chapel within the Campus Ministry Center was damaged as well as the sliding door that separates the chapel from the music room.

Callahan said officials suspect the man either had access to the building, climbed through a window, or was hiding out waiting for an appropriate time to make a move.

"It's really scary because if the man was there when I was and I walked in on his hiding spot" said Callahan, "who knows what he would have done."

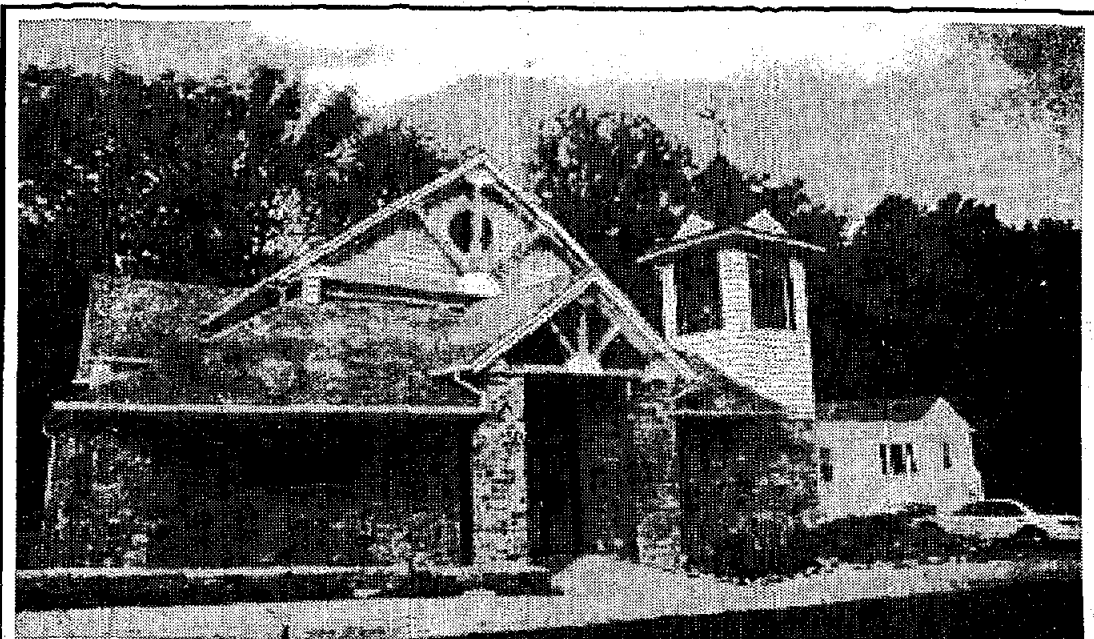


Photo courtesy of WPUNJ online
The Prince of Peace Chapel, on Pompton Road in Haledon, was burglarized on July 2. Damages totaled \$5,000.

STUDENT SERVICES OFFICES MOVE TO NEW LOCATIONS ON AND OFF CAMPUS

COMPILED BY JOE WILSON

The Office of International Students & Scholars

is now located in Room 21, lower level, in
Raubinger Hall.

The Financial Aid Office

is now located in Raubinger Hall, lower level.

Office hours:

8:30 a.m. to 7 p.m. through Sept. 12.

8:30 a.m. to 4:30 p.m. beginning Sept. 15.

For more information call ext. 2202.

The Alumni Relations Office

is located in the new Allan and Michele
Gorab Alumni House, 42 Harmon Place, North

Haledon. Office hours:

8:30 a.m. to 4:30 p.m. Monday through
Friday.

For further more information contact
Gina Buffalino at ext. 2175.

AFT Local 1796 members urged to reject contract

By Steve Baker
Staff Writer

In an emergency meeting on University Day, the union representing faculty, librarians, and professional staff passed a resolution strongly rejecting the tentative contract agreement proposed by the state.

"Negotiation means give and take — our members told us what they wanted.

This agreement should not be the way it is. It is not an equitable and fair contract," said Dr. Susanna Tardi, president of the American Federation of Teachers Local 1796 and a professor of sociology. "If it doesn't get ratified, great! Let's go back to the table and negotiate. It would be a strong statement to the governor (James McGreevey) who we really feel has abandoned us."

The resolution is not binding; each member of the union will receive a ballot in the mail in the next week or two at his or her home address and will register individual votes.

When contacted for comment, a University spokesman said William Paterson University "is prohibited by law from speaking to faculty about labor issues.

"The administration is only permitted to speak with their officers. Any communication to newspapers would be communicating to faculty," said Stuart Goldstein, vice president of institutional advancement.

According to Tardi, the proposed contract puts more autonomy in the hands of the university's president, Dr. Arnold Speert, does not reduce the 12-credit teaching load per semester currently required of faculty,

allows the administration to hire up to 3 percent of the faculty on multi-year/non-tenure track contracts, and does not define compensatory time for professional staff.

She asserted that the contract grants university presidents the power to determine whether or not a negotiation should take place.

WP faculty members can apply annually for a reduced teaching load through a program called Assigned Release Time sponsored through the Provost's Office.

The release time, which is used for research, can include a reduction of up to six credits in teaching requirements over a semester.

Tardi told union members who attended the emergency meeting that the University could reduce everyone's teaching load if it got rid of the ART program and simply granted everyone the right to a lower teaching load.

Montclair State University, Ramapo College and Richard Stockton College have teaching loads of fewer than 12 credits per semester; The College of New Jersey is currently discussing the issue, according to a flyer passed out at the emergency meeting.

"Maintaining a 12-credit teaching load overburdens our faculty limiting time for research and professional development and creates a teaching environment that is not conducive to faculty hiring and/or retention," said Tardi.

One clause that Tardi alleges is potentially damaging to students is that the

\$\$REAL MONEY 101\$\$

SPONSORED BY THE STUDENTS OF LIFE
AN ELDER CAMPUS MENTOR PROGRAM

**DO YOU HAVE CREDIT CARD DEBT?*

**DO YOU NEED HELP WITH YOUR BUDGET?*

**DO YOU BALANCE YOUR CHECKBOOK?*

**DO YOU KNOW ABOUT STUDENT LOANS?*

DO YOU WANT A FREE \$10 BLOCKBUSTER CARD AND A FREE LUNCH?

COME TO THE STUDENT CENTER BALLROOM
THURSDAY, SEPTEMBER 18TH AT 12:30 P.M.

The PIONEER Times

PIONEERTimes@student.wpunj.edu

Editor

Jennifer Urban

Calendar Editor

Prof. Elizabeth Birge

Staff Writers

Lauren Armbruster

Lauren Rega

Steve Baker

Joe Wilson

Layout and Design

Jennifer Urban

Jenny Gehrmann

Banner Design

Robin Kavanagh

Jennifer Urban

Advisers

Prof. Elizabeth Birge

Dr. Tina Leshner

New Jersey Collegiate
Press Association



S P L C

STUDENT PRESS LAW CENTER

Catholic Campus Ministries invites you to special and weekly events in September

September 7th

10:45am & 7:30pm

Opening Masses with CCMClub Fair

September 11th

12:30pm

9/11 Memorial & Blue Mass 4:45pm

September 14th

8:30pm

Welcome Back BBQ

September 21

7:30pm

Commissioning of New CCMClub Officers

September 21

3:30pm

Weekly tutoring at St. Therese School

September 24

6:30pm

Weekly visit to NJ Developmental Center

September 28

7:30pm Opening of "Thanksgiving Awareness
Program"

WEEKLY ONGOING EVENTS✝

MONDAY

12:30pm Mass, 6:30pm Visits
to Preakness Nursing Home

TUESDAY

12:30pm Mass

3:30pm Tutoring at
St. Therese School

Alternate Tuesdays Music Rehearsal

WEDNESDAY

6:30pm Catechism Classes
at North Jersey Developmental Center

THURSDAY

4:45pm Taping of TV show,
"The Word Alive and Well"

FRIDAY

10:00AM First Fridays of the month serving the hungry at Eva's
Kitchen

5:00pm Mass

SUNDAY

10:45am Mass

5:00pm Music Ministry Rehearsal

6:00pm RCIA

7:30pm Mass



CAMPUS VIGNETTES



WPU's Papageorgis named in "Who's Who in America"

By Laura Anne Rega
Staff Writer

Every day one of this country's most successful man stands in the center of William Paterson University. Literally.

Jack Papageorgis, a WPU food service executive, was selected for inclusion in the 2001 Edition of the Marquis Who's Who in America. The book is a compilation of the nation's most accomplished men and women. One of Papageorgis's main priorities is not to establish publicity but to prove to the world how great this country really is.

For the past nine years, Papageorgis has been a food service associate with Sodexo-Marriott Food Service Inc. He can be found closing up the Freshen's smoothie stand in the Machuga Student Center each night. "I love working there and it could be the last job of my life," says Papageorgis.

After 25 years of school, he holds a bachelor's degree, certificate in international business, and two master degrees in business administration.

When growing up in Zakynthos, Greece, Papageorgis was not interested in academics. After two years of high school, he dropped out.

In 1951, he decided to start a new life in the United States. He began his journey as a porter and dishwasher for a Paterson eatery, Libby's Lunch, but had no ambition to continue his edu-

cation, then he met Dennis Kapas, a Libby's waiter. Kapas was studying at the University of Kansas and was a true proponent of education. Kapas pressed Papageorgis to go back to school so he would not have to wash dishes for the rest of his life.

So, Papageorgis finished high school and continued his education at Seton Hall University, where he received his master's in business administration and certificate in international business. He also received a master's from Farleigh Dickinson University.

Papageorgis encourages the investment of money in education; he claims that it will be the best investment a person can ever make. "There is no substitute for success," he says.

Papageorgis worked his way from a dishwasher at Libby's, to a cook, counterman, general manager, and the secretary-treasurer and co-owner in 1963 for Libby's A Corporation. By 1983, he was Libby's co-owner and president.

Prior to his job with Sodexo-Marriott, Papageorgis worked as a family service specialist with Division of Youth and Family Services, Newton and Pompton Lakes, and as an officer with Passaic County Sheriff's Department.

Papageorgis feels strongly about education being crucial to society. "If an immigrant can do it, anyone can do it," he states.

Papageorgis calls America "the land of surprises and opportunities."

UNION

CONTINUED FROM PAGE 1

University may hire up to 3 percent of the faculty on non-tenure contracts. This allows for the hiring of more adjuncts, she said.

"The reputation of the university is based on full-time tenure track faculty," said Tardi. "The state wanted 5 percent, but the union negotiated down. It is like Pandora's Box; once you open that lid, your can never be sure it is going to close."

The union is also urging members to reject this proposed contract because it contains a zero percent pay increase in the first year of the contract. At a Sept. 5 William Paterson board of trustees meeting, a resolution raising the salary of President Arnold Speert was ratified.

"The president, the highest paid employee, receives a significant increase in salary beginning January 2004, while the lowest paid workers in our bargaining unit receive zero increase and have no such expectation of

salary negotiations," said Tardi. "How much of this supposed fiscal crisis is real? Why does President Speert get an increase? Shouldn't we all take a hit?"

AFT Local 1796 has the third largest membership of the state colleges and universities with 419 members. The Council of New Jersey State College Locals includes WPU, Montclair State University, Kean University, Rowan University, The College of New Jersey, New Jersey City University, Richard Stockton College, Ramapo College, Thomas Edison College. Each local chapter receives approximately one delegate vote per 50 members.

If the contract is passed by the rest of the universities and colleges, but not by Local 1796 at William Paterson, "it will be a very strong statement to the president that we are not going to continue operating business as usual," said Tardi.

PREVIEWS

CONTINUED FROM PAGE 8

as an assistant. During her playing days, she was a three-time All-NJAC performer and holds the single-season record for game winning goals.

The 2003 team returns 9 starters from last year. Woods has high expectations for his experienced team.

"I think with our experience level being as high as it's been since 1999 when we had eight seniors and finished 15-4, we feel good about things," stated Woods.

A trio of senior goal scorers is also returning. "We have three good goal scorers coming back and offensively it's a nice luxury to have three players score seven goals apiece," Woods said about forwards Wieszun, McPhail, and Finn.

Cruise will add depth at the forward position. Freshmen Meghan McDermott and Caitlin Higdon will also look to contribute at that position.

Senior Sarah Stowe (Hopatcong, NJ) returns back to

the lineup. Stowe is a solid two-way player who scored two goals and dished out 2 assists last year. Sophomore Denise Spina (Spotswood, NJ) looks to have more playing time this year as a midfielder after an excellent freshman year. Freshmen Lea Mullady, Lauren Marotta, and Melissa Boka could see some considerable action there also.

In the backfield, Birdsall and McCarthy head up the group. Junior Erin Guidera (Union, NJ) is another player returning that will provide the Pioneers with solid defense. Freshman Laura Conte can also provide the Pioneers with good solid defense. Koppel returns to the Pioneers as their prime goalkeeper after an outstanding freshman season, but when Koppel needs a rest, freshman Erin Reene will come into replace her.

THE PIONEER
TIMES

IS LOOKING
FOR PEOPLE
WHO ARE
INTERESTED IN
WRITING,
EDITING, AND
PHOTOGRAPHY.

PLEASE CONTACT
THE EDITORS AT:

PIONEERTIMES
@STUDENT.WPUNJ.EDU

CAMPUS TO CAMPUS

COLLEGE NEWS FROM AROUND THE COUNTRY

Thousands of U.S. college students may lose Pell Grants

By Jennifer Wells
Daily Kent Stater
Courtesy of UWire.com

KENT, Ohio — More than 80,000 students could lose government grants for college next year.

Budget officials at the Department of Education estimate that 84,000 students nationwide could lose their Federal Pell Grant eligibility for the 2004-2005 award year. Additionally, the department estimates the maximum Pell Grant amount will be \$270 million less than previous years. About 100,000 students will receive less money next year. Pell Grants are federal grants for college that students do not have to pay back.

The Department of Education adjusted the formula that determines a family's expected contribution to college expenses last May. This formula decides how much financial aid a student will receive and how much a family will contribute to college costs.

The incomes, the allowances and the assets of both parents and the student determine expected family contribution. The formula deducts state and local taxes — deductions vary from state to state. Families will be expected to contribute more to college expenses because the change in the formula reduced the percentage of deductions in most states. New tax tables will make a family's income appear higher than it is. Previously the tax table had not been changed since the 1994-1995 award year.

Pell Grants are awarded based on need, and with the change, some students may now be ineligible to receive them. Mark Evans, director of student financial aid, said it is too early to speculate how this new change will directly impact Kent State students, but in the past a large amount of students have relied on Pell Grants. Evans said approximately 10,224 students at all eight

Kent State campuses received Pell Grants in the 2002-2003 award year. Kent State students received a total of \$23.5 million in Pell Grants last year. In most instances Pell Grants are available to undergraduate students who are determined financially eligible by a standard formula.

By request of Democratic lawmakers, the Congressional Research Service recently released a

are three years old and do not take into account today's economy. Evans said this makes incomes look higher and is not an ideal situation.

Recently, Ohio increased its sales tax; however, the new tax tables do not reflect the increase in Ohio taxes. Ohio citizens pay more taxes today than a year ago, but with the change students will deduct a smaller percentage of taxes when they fill out their application for

financial aid. According to Evans, not only will Pell Grants be impacted but other financial aid as well. He said even a slightly higher family income shows lower need base and this could affect how much financial aid a student could receive overall.

"Students at low income levels will face minimal impact," Evans said. "Those at the high levels will be affected the most."

Students who currently have Pell Grants may now face having to take out more student loans.

"The Pell Grant is the only grant I have," said Kristina Milat, junior nursing major. "The rest of my financial aid is all loans that I will have to pay back."

Without her Pell Grants, Milat would be forced to increase her loans and eventually will have to pay back all the money she borrowed.

"I'm pushing working four days a week now with my nursing classes," Milat said. "If I worked more I would have no time to study and my grades will suffer."

Evans said there is still financial aid available for students this year. A portion of the 8 percent tuition increase creates additional scholarships for those who need more assistance paying their tuition, he said.

"I'm pushing working four days a week now with my nursing classes. If I worked more I would have no time to study and my grades will suffer."
- Kristina Milat, junior/nursing major.

memorandum describing the possible impact students will notice because of the formula's change.

According to the memo, the percentage of taxes that can be deducted was unchanged in 13 states. Percentages rose in states like Connecticut, Nevada and New Jersey, giving them more financial aid. But in states like Ohio it decreased, giving students less aid. This is because Ohio's tax deductions have been reduced by 3 percent for dependent students and by 1 percent for independent students. But this 3 percent is not up to date, Evans said. He said the new tax tables

U. Virginia, 6 other Virginia colleges sued

Lawsuit filed by advocacy group claims undocumented citizens denied admission based on immigration status.

By Anthony Lamesa
Cavalier Daily (U. Virginia)
Courtesy of UWire.com

CHARLOTTESVILLE, V.A. — Seven Virginia public colleges and universities, including the University of Virginia, are facing a lawsuit after the Mexican-American Legal Defense and Educational Fund filed a legal challenge Tuesday on behalf of undocumented citizens, who the advocacy group says have been denied or will be denied admission at the schools based on their immigration status.

Last September, Virginia Attorney General Jerry Kilgore issued a memo of legal advice to Virginia public colleges and universities advising them against admitting undocumented citizens.

"It's the attorney general's view that schools as a matter of policy should not admit illegal aliens," Kilgore Spokesperson Tim Murtaugh said. "However, ultimately it's the schools that make that policy. There is no federal or state law that either requires or forbids the admission of illegal aliens."

According to Trisha Talman, Southeast regional counsel for MALDEF, the memo also recommended that educators report students based on their "perceived immigration status" to the attorney general and the

Immigration and Naturalization Service.

"An educator's role is to educate, not to determine what an individual's immigration status is," Talman said, adding that her organization drafted a reply to Kilgore's memo last fall responding to his assertions, and had hoped to avoid a legal confrontation.

"We've really worked since October of last year to try to resolve this situation short of litigation," she said. Recently, however, "we determined that the best way to proceed in this matter was to have a lawsuit."

Talman also said Virginia is an anomaly in regard to the lack of educational opportunities Kilgore feels should be afforded to undocumented citizens.

"The debate throughout the country and in Congress is not about whether the students should be able to attend college, because they are," she said. "The debate is over how to provide them with an affordable education."

Presidents and Board of Visitors rectors from the University, George Mason University, Virginia Commonwealth University, Virginia Tech, Northern Virginia Community College, James Madison University and the College of William and Mary all were named as defendants in the suit.

George Mason University followed Kilgore's lead on not admitting undocumented citizens, but still attempts to aid them in gaining citizenship and educa-

tional opportunities, Executive Director of University Relations George Walsch said.

"Our policies that if somebody is illegal, we do work with them to help give them guidance as to how to gain legal status," Walsch said.

University resident John T. Casteen, III and other University administrators said they could not comment on the lawsuit because it is pending litigation.

Murtaugh suggested that undocumented citizens in Virginia who want to attend its schools should simply become legal citizens before applying to college, just as they prepare for the SAT or take challenging high school coursework.

"I submit that if you are an illegal alien, becoming a legal resident of Virginia might be one of those things you do to prepare for college," he said.

According to Talman, though, gaining legal citizenship is an extremely difficult process.

"It takes years upon years," she said. "There are individuals who have had pending applications [for citizenship] based on political asylum for 10 years."

The first hearing on the lawsuit will take place Monday in Alexandria, Va.

WILLIAM PATERSON UNIVERSITY

SHUTTLE SERVICE SCHEDULE MAIN CAMPUS

EFFECTIVE: SEPTEMBER 2, 2003

Weekdays						
LOT 7	LOT 6	HERITAGE	PIONEER	WAYNE	LOT 5	
A.M.	A.M.	A.M.	A.M.	A.M.	A.M.	A.M.
7:30	7:32	7:34	7:40	7:42	7:50	7:55
8:00	8:02	8:04	8:10	8:12	8:20	8:25
8:30	8:32	8:34	8:40	8:42	8:50	8:55
9:00	9:02	9:04	9:10	9:12	9:20	9:25
9:30	9:32	9:34	9:40	9:42	9:50	9:55
10:00	10:02	10:04	10:10	10:12	10:20	10:25
10:30	10:32	10:34	10:40	10:42	10:50	10:55
11:00	11:02	11:04	11:10	11:12	11:20	11:25
11:30	11:32	11:34	11:40	11:42	11:50	11:55
P.M.	P.M.	P.M.	P.M.	P.M.	P.M.	P.M.
12:00	12:02	12:04	12:10	12:12	12:20	12:25
12:30	12:32	12:34	12:40	12:42	12:50	12:55
1:00	1:02	1:04	1:10	1:12	1:20	1:25
1:30	1:32	1:34	1:40	1:42	1:50	1:55
2:00	2:02	2:04	2:10	2:12	2:20	2:25
2:30	2:32	2:34	2:40	2:42	2:50	2:55
3:00	3:02	3:04	3:10	3:12	3:20	3:25
3:30	3:32	3:34	3:40	3:42	3:50	3:55
4:00	4:02	4:04	4:10	4:12	4:20	4:25
4:30	4:32	4:34	4:40	4:42	4:50	4:55
5:00	5:02	5:04	5:10	5:12	5:20	5:25
5:30	5:32	5:34	5:40	5:42	5:50	5:55
6:00	6:02	6:04	6:10	6:12	6:20	6:25
6:30	6:32	6:34	6:40	6:42	6:50	6:55
7:00	7:02	7:04	7:10	7:12	7:20	7:25
7:30	7:32	7:34	7:40	7:42	7:50	7:55
8:00	8:02	8:04	8:10	8:12	8:20	8:25
8:30	8:32	8:34	8:40	8:42	8:50	8:55
9:00	9:02	9:04	9:10	9:12	9:20	9:25
9:30	9:32	9:34	9:40	9:42	9:50	9:55
10:00	10:02	10:04	10:10	10:12	10:20	10:25
10:30	10:32	10:34	10:40	10:42	10:50	10:55
11:00	11:02	11:04	11:10	11:12	11:20	11:25
11:30	11:32	11:34	11:40	11:42	11:50	11:55
A.M.	A.M.	A.M.	A.M.	A.M.	A.M.	A.M.
12:00	12:02	12:04	12:10	12:12	12:20	12:25
12:30	12:32	12:34	12:40	12:42	12:50	12:55
1:00	1:02	1:04	1:10	1:12	1:20	1:25
1:30	1:32	1:34	1:40	1:42	1:50	1:55
2:00	2:02	2:04	2:10	2:12	2:20	2:25

Saturdays						
WAYNE	LOT 5	HERITAGE & PIONEER	VALLEY RD	PREAKNESS	POWER ARTS	NJ TRANSIT
A.M.	A.M.	A.M.	A.M.	A.M.	A.M.	A.M.
8:00	8:05	8:10	8:20	8:25	8:30	8:45
9:00	9:05	9:10	9:20	9:25	9:30	9:45
10:00	10:05	10:10	10:20	10:25	10:30	10:45
11:00	11:05	11:10	11:20	11:25	11:30	11:45
P.M.	P.M.	P.M.	P.M.	P.M.	P.M.	P.M.
12:00	12:05	12:10	12:20	12:25	12:30	12:45
1:00	1:05	1:10	1:20	1:25	1:30	1:45
2:00	2:05	2:10	2:20	2:25	2:30	2:45
3:00	3:05	3:10	3:20	3:25	3:30	3:45
4:00	4:05	4:10	4:20	4:25	4:30	4:45
5:00	5:05	5:10	5:20	5:25	5:30	5:45
6:00	-	-	-	-	-	-

Sundays					
WAYNE	LOT 5	HERITAGE & PIONEER	SHOPRITE	POWER ARTS	NJ TRANSIT
P.M.	P.M.	P.M.	P.M.	P.M.	P.M.
12:00	12:05	12:10	12:25	12:30	12:45
1:00	1:05	1:10	1:25	1:30	1:45
2:00	2:05	2:10	2:25	2:30	2:45
3:00	3:05	3:10	3:25	3:30	3:45
4:00	4:05	4:10	4:25	4:30	4:45
5:00	5:05	5:10	5:25	5:30	5:45
6:00	-	-	-	-	-

Weekday Express

Express shuttle service between Lots 6 and 7 runs every ten minutes from 9:00 a.m. through 2:00 p.m.

CAREER DEVELOPMENT CENTER WORKSHOPS 2003

ALL WORKSHOPS ARE REPEATED ON A MONTHLY CYCLE, TUESDAYS AND THURSDAYS AT 12:30, IN THE MORRISON HALL CONFERENCE ROOM DURING THE FALL AND SPRING SEMESTERS, WHEN CLASSES ARE IN SESSION.

- EFFECTIVE RESUMES & COVER LETTERS -

1ST TUESDAY

Create a personalized, skills/accomplishment based resume that produces results!

- INTERVIEWING TECHNIQUES -

2ND TUESDAY

Learn the basics of interviewing as well as how to approach and engage recruiters at job fairs.

- JOB SEARCH, CAREER FAIR & NETWORKING STRATEGIES -

3RD TUESDAY

Learn how to utilize a myriad of job hunting resources including how to make the most of Career Fairs.

- INTERNSHIP ORIENTATION -

4TH TUESDAY

Prepare you for the process of securing an internship. Learn academic pre-requisites, how to register for credits, search for suitable positions, market yourself and make the most of your experience.

- CAREER PLANNING PORTFOLIO -

1ST THURSDAY

Start building your path to a successful career! Learn how to document and market valuable skills and accomplishments.

- MOCK INTERVIEWS -

2ND THURSDAY

Test and practice your interviewing skills with the support of peers and career counselors.

- CHOOSING A MAJOR/CAREER FIELD -

3RD THURSDAY

Helps students who are "undeclared" or between majors understand how to go about selecting a major and/or better define career goals that match their interests, skills, abilities and values.

- PLANNING FOR GRADUATE SCHOOL - 4TH THURSDAY

Provides tips on how to evaluate, select, apply for and improve your chances of gaining acceptance into a graduate school of choice.

Love us? Hate us? Let us know! Email the editors at:

PIONEERTimes@student.wpunj.edu

The editors of the PIONEER TIMES are looking for a student interested in advertising or public relations to oversee our ad sales

*****An upper-level student may get credit for this work*****

Please contact Prof. Elizabeth Birge at ext. 2656

or Dr. Tina Leshner at ext. 9147

Calendar of Events: Sept. 10th through Sept. 24th

By Diane Rasa
Calendar Editor

David and Lorraine Cheng Library

The library is sponsoring a series of workshops during its E-Week now through Saturday, Sept. 13

Wednesday, Sept. 10

Making the Most of Your Library
10 a.m. to 11 a.m.

Wireless Laptop (Reference Desk)
12:30 p.m. to 1:30 p.m.

Electronic Journals
2 p.m. to 3 p.m.

Making the Most of your Library
5:30 to 6:30 p.m.

Thursday, Sept. 11

Making the Most of your Library
10 a.m. to 11 a.m.

Electronic Journals
2 p.m. to 3 p.m.

Making the Most of Your Library
5:30 to 6:30 p.m.

Friday, Sept. 12

Making the Most of Your Library
10 a.m. to 11 a.m.

Electronic Journals
2 p.m. to 3 p.m.

Making the Most of Your Library
5:30 p.m. to 6:30 p.m.

Saturday, Sept. 13

Making the Most of Your Library
11 a.m. to 12 p.m.

Pow Art Gallery Exhibit

Wednesday, Sept. 10 through Sunday, Sept. 15
11 a.m. to 5 p.m.

Exhibit by William Paterson students, titled "On and Off the Wall," reflects a wide range of techniques, materials and approaches mixed media artwork.

Catholic Campus Ministry Sept. 11 "Blue Mass"

Thursday, Sept. 11
12:30 pm

Mass honoring the public servants (poe, EMTs and fire-fighters) the Passaic County Sheriff's office, the prosecutor's office and the town's adjacent to the campus: Haledon, North Haledon and Wayne. CCM Chapel next to Gate #1. For information call ext. 3524.

Midway Artist Series Thursday, Sept. 11

2:30 p.m.

Russell Win, pianist, performs works by Samuel Barber and Harry Buigh, admission \$3, 2a Center. For more information call ext. 2371.

Movie Night Thursday, Sept. 11

7 p.m. to 10 p.m.

Machuga Student Center Lobby Large SAPB; call C.L. at ext. 2271 for more details.

Die-In Movie Friday, Sept. 12

7 p.m. to 10 p.m.

Rec Center SAPB; call CASL at ext. 21 for more details.

Falls clean-up Saturday, Sept. 13

There will be a clean up at the Falls of the Passaic in Paterson. Starting time is between 9 a.m. and 10 a.m. organizers expect to finish up by 1 p.m.

For more information please e-mail Dr. Richard Pardi at PardiR@wpunj.edu or contact Jennifer Lengares at the Natural Science Club.

Comedy Show Saturday, Sept. 13

7 p.m. to 10 p.m.

Machuga Student Center Ballroom, SAPB; call CASL at ext. 2271 for more details

The Ben Shahn Gallery Monday, Sept. 15 through Friday, Oct. 17

10 a.m. to 5 p.m.

"Objects of Power," a selection of African art and artifacts, including sculpture, masks, jewelry, dress, and baskets and decorated gourds will be on exhibit in the Court Gallery. This is a partial selection of from nearly 700 objects donated by the collection by Joan and Gordon Tobias, private collectors.

In Ben Shahn's South Gallery is a selection of recent drawings created by members of the art faculty, which includes painters, sculptors, printmakers, and designers in every media.

On view in the East Gallery is "Rocco Scarey: Paper and Fire" a one-person exhibit featuring Scarey's artist's books constructed of handmade paper and steel.

Artists Series Thursday, Sept. 18

12 p.m.

Brett Deubner on the viola and Gary Kirkpatrick on the piano will appear in recital in Shea auditorium as part of the "Artists Series," tickets \$3. For more information call, ext. 2371.

Students of Life Thursday, Sept. 18

12:30 p.m.

Presents Real Money 101, an information session to help stu-

dents manage and control their financial situations and provide lifelong money management skills.

Free lunch and free \$10 gift, just for attending. For additional information or to reserve space, contact SOL at ext. 3690 or ext. 2873.

"Leadership and Lifelong Learning" presented by Alumni Lecture Series Tuesday, Sept. 30

6:30 p.m.

Hunziker Wing 101

To RSVP, please call Rodney Cauthen in the Alumni Relations Office at 973.720.2897 or alumni@wpunj.edu

All alumni can receive CEU credit for attending this program. Admission is free. Alumni & stu-

BRIEFS

RESIDENT STUDENT I.D. CARDS CAN BE MADE THROUGH SEPT. 12. PHOTOS WILL BE TAKEN AT THE MACHUGA STUDENT CENTER ROOM 100, TUESDAY, SEPT. 9 A.M. TO 4 P.M. AND SEPT. 11 FROM 9 A.M. TO 7 P.M.

WPU PUBLIC SAFETY OFFICERS ARE AVAILABLE TO SPEAK TO CLASSES ON THE FOLLOWING SUBJECTS: DATE RAPE AWARENESS, SAFETY ON CAMPUS, DRUG AND ALCOHOL ABUSE AND AWARENESS. FOR MORE INFORMATION CONTACT CARYN RODRIGUEZ AT EXT. 3004

ANYONE INTERESTED IN TRYING OUT FOR THE PIONEERS SOFTBALL TEAM SHOULD CONTACT COACH HALLIE COHEN EXT. 3016 AS SOON AS POSSIBLE, OR SEND AN E-MAIL TO COHEN@WPUNJ.EDU.

PIONEER Sports

2003 season previews: Pioneers soccer, field hockey get set for victory on the field

By Lauren Armbruster
Staff Writer

Field Hockey coach Hallie Cohen enters her ninth season with 81-57 record

Hallie Cohen has 23 years of experience coaching field hockey, which includes 15 years at FDU-Madison. She enters her ninth season as the head coach of the Pioneers with a record of 81-57.

In 2000, Cohen coached the field hockey team to its first NCAA Division III appearance. If coaching one NCAA sport was not enough, Cohen is also the head coach of the university's successful softball team. She has been in the Pioneers' dugout for the past nine seasons.

Last season, the Pioneers finished the season with a 10-6 record. Three players earned NJAC weekly honors. Mindy Coxe (Gloucester, NJ) and Deanna Wall earned Rookie of the Week honors for September 9th and October 21st respectively. Erica Riley (Bloomsbury, NJ) earned NJAC Defensive Player of the Week for September 19th.

A quartet of freshman emerged as key players for the Pioneers. Scout Bargiel (Tranquility, NJ), Lauren Clark (East Brunswick, NJ), Wall, and Coxe, who was also named NJAC Rookie of the Year.

The four combined for 12 goals, five of them were game winners. Bargiel and Clark each recorded six points (2 goals/ 2 assists and 3 goals respectively.) Coxe and Wall each recorded ten points (2 goals/ 6 assists and 5 goals respectively.) Sophomore Cheryl Naurath (Clementon, NJ) earned a spot on the NJAC first team; she registered 10 points last season.

Sophomore goalkeeper Kelly Harchetts (Clarksburg, NJ) proved herself as a worthy starter. Junior Krista Hinshillwood (Oaklyn, NJ) was an All-NJAC first team performer and earned a spot on the second team All-South Atlantic Region team; she led the team in points with 24.

Senior Leigh Brown (Gibbsboro, NJ) was chosen to represent William Paterson in the National Field Hockey Coaches Association Division III North/South Senior All-Star game that was played on November 23, 2003 at Springfield College in Massachusetts.

This year's roster features many key players from last year with the addition of new talent. One of the groups of players that are returning to this year's roster is seniors Heather Aquino (Somerville, NJ) and Kim Tinker (Metuchen, NJ), as well as sophomores Cindy Conklin (Long Valley, NJ), Cristina Darcy (Garwood, NJ), and Ebony Tillery (Neptune, NJ). They all will play exclusively at the forward position.

The quartet of Bargiel, Coxe, Wall, and Clark will either start at the forward position or link position, as Cohen may alternate players between forward and link or link and back.

Seniors Koenig and Riley will play either at the link or back position, while fellow senior Hall will only play the back. Naurath will move from the link position to the sweeper to fill the hole left by the graduation of Brown. Harchetts returns in the goalie position, and backing her up is sophomore Jessie Mull (Trenton, NJ) and

freshman Grace Browne.

A group of talented freshmen come into the program this year. They are back April Sardinas-Wyssling, link Amy Shannon, forwards Nicole French, Brandi Kavaliauskas, and Brandy Petrongolo.

"Each player brings a different aspect to our team and that's where our strength lies, in our diversity," Cohen said.

Koenig and Hall are being called upon by Cohen to provide solid leadership.

"Heidi was one of the co-captains last season, and with another season under her belt, I believe she will do a great job. Kim sets a great example everyday at practice with her work ethic and silent maturity," Cohen said about her senior leaders.

Key soccer players return for the 2003 season

The women's soccer team finished the 2002 campaign as the number two team in the NJAC Conference. Six junior players earned the team's only post season honors. Amy Wieszun (Wayne, NJ) earned first team All-NJAC honors; Kat McPhail (Sparta, NJ), Allison McCarthy (Haddonfield, NJ), and Kelly Cruise (Wood-Ridge, NJ) earned second team All-NJAC; and Lindsay Birdsall (Forked River, NJ) and Erin Finn (Kearny, NJ) earned honorable mention NJAC.

Wieszun lead the team with 21 points (7 goals, 7 assists). Those 7 goals and 7 assists place her third in the all-time list for goals (23) and points (63). In addition from her first team honor in the NJAC, she was named to the National Soccer Coaches Association of America second-team All-Mid-Atlantic Region.

McPhail garnered the NJAC's Offensive Player of the Week (October 21). McPhail was the second in points with 17 (7 goals, 3 assists). McPhail proved able to find the back of the net in crucial situations; three of the seven goals were game winners, which was a team best.

McCarthy earned the NJAC's Defensive Player of the Week (October 14). She also added an offensive punch by scoring 5 goals and dishing out 1 assist.

Cruise recorded 8 points on the season. She netted 3 goals, and she dished out 2 assists. Finn found the back of the net 7 times during the season. She also dished out 2 assists. Sophomore Rebecca Wiesniewski (Edison, NJ) scored 5 goals and recorded 3 assists.

In the net, freshman Meaghen Koppel (Spotswood, NJ) had 1.24 goals against average. She recorded 7 shutouts, and she earned the NJAC's Defensive Player of the Week (October 28).

Keith Woods enters his seventh year as head coach of the program with a record of 82-28-6. Under his leadership, Woods has guided the program to two NCAA Division III appearances in 1997 and 1998. In 1997, the program made it all the way to the Sweet 16, and in 1998, the program went undefeated through the regular season and won the program's first NJAC championship. Assisting Woods is a former player in Kathleen Sinram. Sinram enters her sixth year

Pioneer Sports Calendar

Wednesday, Sept. 10
Women's Soccer vs.
Scranton 7 p.m.

Thursday, Sept. 11
Field Hockey vs. Cabrini
7 p.m.

Friday, Sept. 12
Volleyball at Scranton
Invitational TBA

Saturday, Sept. 13
Cross Country at Wagner
Invitational
10 a.m.

Football vs. Salisbury
1 p.m.

Men's Soccer vs. DeSales
5 p.m.

Field Hockey in Betty
Richey Tournament
at Vassar College
TBA

Volleyball in Scranton
Invitational TBA

Sunday, Sept. 14
Field Hockey in Betty
Richey Tournament at
Vassar College
TBA

Tuesday, Sept. 16
Field Hockey at FDU
Florham
4 p.m.

Volleyball at Richard
Stockton
7 p.m.

Wednesday, Sept. 17
Men's Soccer at NYU
7 p.m.

Women's Soccer vs.
Stevens Tech
7 p.m.

Thursday, Sept. 18
Field Hockey at
Marywood
4 p.m.

Volleyball vs. Montclair
State
7 p.m.

Saturday, Sept. 20
Cross Country at NYU
Invitational
10 a.m.

Fall Baseball at Lafayette
1 p.m.

Fall Softball at Rutgers
Invitational
1 p.m.

Football at Plymouth State
1 p.m.

Men's Soccer at The
College of NJ
1 p.m.

Women's Soccer vs. The
College of NJ
1 p.m.

Sunday, Sept. 21
Fall Baseball at Army
1 p.m.

Tuesday, Sept. 23
Field Hockey vs. The
College of NJ
4 p.m.

Volleyball at Kean
7 p.m.

Wednesday, Sept. 24
Women's Soccer
at Ramapo
4:30 p.m.

Men's Soccer vs. Ramapo
7 p.m.