



New learning center cornerstone of Valley Rd. building

By Jill K. Sanders
Co-Editor

The newest building at William Paterson will not only house two of the university's colleges, but also an E*Trade Financial Learning Center, equipped with state-of-the-art technology and a trading room.

The College of Business has moved to the recently acquired Union Camp building, located at 1600 Valley Road, where some classes in the College of Education will be held, as well. The new building and business college will have its grand opening on University Day.

Early this year, the College of Business was renamed the Christos Michael Cotsakos College of Business (CCOB) after Cotsakos, who donated \$10 million to the College of Business at William Paterson. The business college is pursuing accreditation in the American Assembly of Collegiate Schools of Business (AACSB) and was placed in the new building as part of that effort.

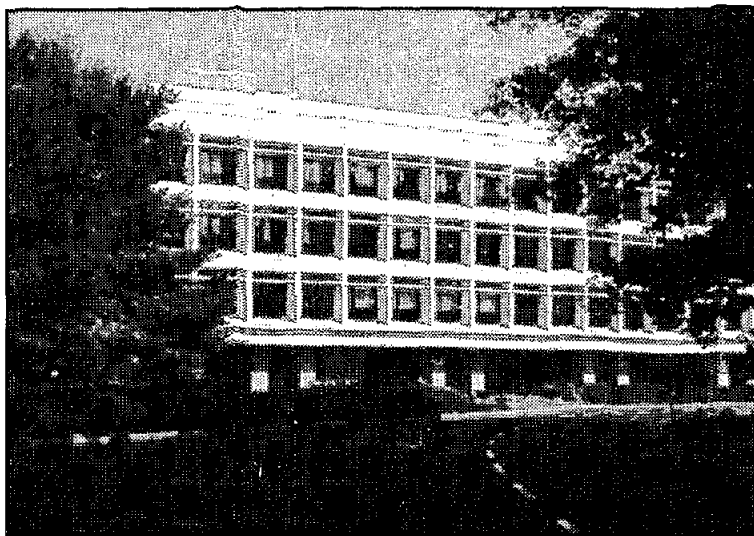
Cotsakos, who will participate in the Distinguished Lecture Series this year, is chairman of the board and chief executive officer for E*Trade Financial. He was also a technical advisor at President

Bill Clinton's first Cyber-Security Summit and an advisor to a Pentagon project on national defense and security systems technology. Cotsakos and his wife Tami grew up in Paterson and both attended William Paterson.

AACSB Accreditation "assures quality and promotes excellence and continuous improvement in undergraduate and graduate education for business administration and accounting", according to the AACSB website. Only about 500 college and universities have the accreditation.

"Cotsakos made a \$10 million endowment for the purpose of providing a supplement to the college in its pursuit of AACSB accreditation and its vision of being a leader in the provision of preeminent academic programs in business in the tri-state area," said Dr. Jess Boronico, dean of the CCOB.

Along with new offices and class-



The new Christos Michael Cotsakos College of Business on Valley Road will be dedicated on Sept 3.

PT photo by Robin Kavanagh

rooms, the new building is home to an E*Trade Financial Learning Center, "which will provide students with cutting edge technology", Boronico said.

"It is a new, state of the art, technologically advanced building," he continued.

The learning center, where every CCOB student will be required to work in at some point in his or her college careers, is "one of only a handful of technology equipped learning facilities" that functions as a trading room while also enabling "cutting-edge" educational and community programs, according to a press release on the learning center.

The learning center is like a workshop where business students will be able to

SEE NEW BUILDING, PAGE 7

Tuition rises 9 percent; budget cuts continue

By Jill K. Sanders
Co-Editor

Full-time New Jersey resident students will pay \$596 more to attend William Paterson University this year, while full-time out-of-state resident students will pay \$1,216 more as part of the nine-percent tuition increase the university announced in June.

In total, full-time New Jersey students will pay \$6,200 per year to attend WPU, while full-time, out-of-state students will pay \$10,200.

In addition, spending for the 2003 fiscal year was cut by several million, and many vacant staff positions have been frozen as the university continues to struggle with the impact of the statewide fiscal crisis.

"Budget cuts were actually about seven percent," said Steve Bolyai, vice president of Administration and Finance. According to Bolyai, when New Jersey announced a statewide budget cut of five percent, it didn't include the fact that state appropriations were not going up from the previous year.

Tuition and fees for the new year were raised in an effort to fill an approximately \$6.5 million budget gap that came primarily from state budget cuts, and increases in some staff salaries due to contractual obligations.

Of New Jersey's nine state colleges and universities, William Paterson falls in the middle, ranking number four in tuition for full-time students who reside in New Jersey.

"We don't want to have the highest tuition in the state, nor do we want to have the lowest," Bolyai said Bolyai. "We try to minimize the tuition increase. We're in the same range we've always been in."

"Most of them (tuitions of other state colleges and universities) went up about nine percent," Bolyai continued.

As another affect of budget cuts,
SEE CUTS, PAGE 7

College experience U-Day speaker's topic

By Jenifer Petrocca
Staff Writer

Richard J. Light, Walter H. Gale professor of education at the Kennedy School of Government and Graduate School of Education at Harvard University, will be the keynote speaker for University Day's Annual New Student Convocation at 1:30 p.m. in the Shea Center for Performing Arts on Tuesday, Sept. 3. A reception for Light will be held in the Student Center at 4:30 p.m.

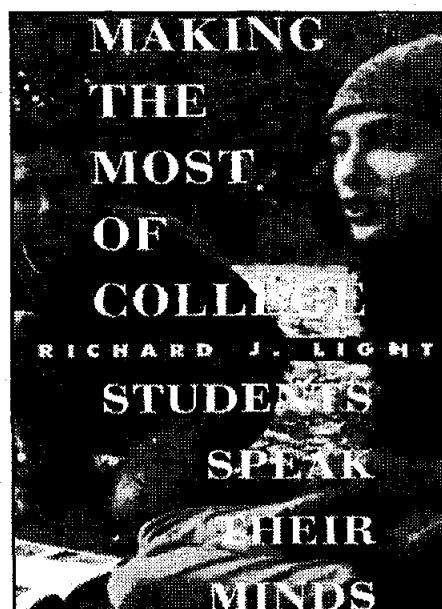
His 2001 publication, "Making The Most Of College: Student's Speak Their Minds," is required reading for the freshman seminar classes this year. Light was honored with the Virginia and Warren Stone Prize for Outstanding

Book of the Year on Education and Society. The freshman seminar discussion groups will be held immediately after Light's speech; all other classes for the day have been cancelled.

University Day is a daylong celebration of the new academic year with events and activities beginning at 8:30 a.m. and continuing into the evening. William Paterson officials describe the day as an alternative learning event, which promises to engage students, faculty and staff in various activities designed to reaffirm their commitment to academic excellence and student success.

"University Day began in 1997 when William Paterson was granted University status by the state of New Jersey," said

SEE LIGHT, PAGE 7



is 'signs' a
good weekend
bet?
See Page 5



Pioneer
Shuttle
Schedule
See Page 6

Field Hockey and
Soccer Season
Previews
See Page 8



Pioneer Times hits third year

Distribution of this the *Pioneer Times* edition marks the start of the paper's third year of publication.

From a relatively quick start in Fall 2000, the *Pioneer Times* has graduated to award-winning status and has emerged as an important part of the media landscape at WPUNJ.

Two years ago, the university awarded Incentive Grant monies to the Department of Communication to start a newspaper tied to the school's journalism concentration. The grant proposal, written by the then-department chair, Dr. Tina Leshner, detailed how the paper would be integrated into the curriculum. Students in the advanced journalism classes would serve as primary staff members/editors for the paper, while those in the beginning courses also would contribute to the editorial content of the *Pioneer Times*.

Other WPUNJ students would be welcome to work on the paper as an extracurricular activity.

Within a month of receiving the grant funds, the *Pioneer Times* hit the stands. From four issues the first semester, the paper has moved to a biweekly publication schedule, with special editions also in the mix. Among its recent honors were six awards from the New Jersey Press Association, and a certificate of achievement from the Associated Collegiate Press with one Mark of Distinction for the paper's coverage of the September 11, 2001 terrorist attacks.

Several of the paper's reporters have received post-graduate internships at the

Bergen Record, and one received a post-graduate fellowship at the Poynter Institute for Media Studies in St. Petersburg, Fla., as well as a Chipps Quinn Scholarship, which lead to an internship at the Lakeland Ledger in Lakeland, Fla. Local papers, including Sugaia, Wayne Today and Suburban Trends, have hired the paper's alums.

Dr. Leshner credits her colleague and fellow adviser, Prof. Elizabeth Birge, with overseeing most of the responsibilities associated with the paper.

"I was on sabbatical during the crucial second and third semesters of publication," said Leshner, "and Professor Birge and her students worked hard to create a good product."

The *Pioneer Times* covers campus events and also has access to wire service copy. Leshner says the emphasis is on good writing and editing.

"Fortunately, Professor Birge and I have worked for major newspapers and have studied at major journalism schools, so we understand how a college paper should be presented," Leshner said. "We believe strongly that college papers should reflect the school's journalism."

Journalism is one of five concentrations offered by the Department of Communication; the others are radio/television, theatre, film, and interpersonal studies.

Those interested in writing for the *Pioneer Times* are asked to contact Prof. Birge at birgee@wpunj.edu.

The Pioneer Times

PioneerTimes@student.wpunj.edu

Co-Editors: Jill K. Sanders
and Jennifer Urban

Consulting Editor: Robin Kavanagh

Calendar Editor: Kerry Johnson

Staff Writers

Jillian Allinder Jenifer Petrocca
Eva Torres Edward Triggs
Jeanie Dewitt Heather Skannel
Lauren Armbruster

Layout and Design: Jennifer Urban
Jill K. Sanders

Banner Design: Jennifer Urban
Robin Kavanagh

Advisers:

Dr. Tina Leshner
Prof. Elizabeth Birge

New Jersey Collegiate
Press Association

 **S P L C**
STUDENT PRESS LAW CENTER

WPSC-FM 88.7

North Jersey's Independent Radio

Welcome Back to Fall 2002

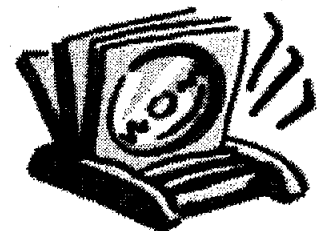
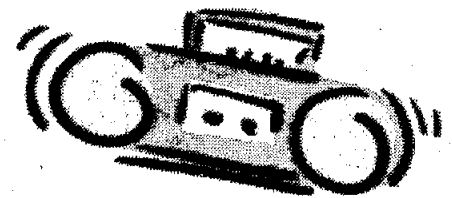
WPSC-FM at 88.7

is your College Radio

entertainment source.

**Alternative Rock, Hard Rock,
Heavy Metal, Hip Hop, Blues, Jazz
And Much More**

No one does it better!



WPSC 88.7 Makes Your Fall Fun!

Distinguished Lecturer Series begins with playwright, actor

By Eva Torres
Staff Writer

William Paterson University's renowned Distinguished Lecturer Series kicks off on Friday, Oct. 11, when Anna Devere Smith, a noted playwright and actor, will perform "Snapshots: Glimpses of America in Change," a theatrical program on issues of race, gender and class.

Smith can be seen regularly on NBC's "The West Wing" where she plays the national security advisor.

The 23rd annual DLS is a program of five lectures organized by the university to provide the William Paterson community with a forum to question and interact with prominent professionals in various fields.

The series was created in the 1970s by former Dean of the School of Management Dr. Berch Haroian, current Director of External Affairs Dennis Santillo and the late Mary Ellen Kramer. Initially, the series was meant as a platform for community interaction

and exposure for the School of Management and the then-William Paterson College.

"[The series] is a community service which elevates the community's discourse on important issues by bringing people in person touch with prominent individuals," said Andrew McKay, assistant director of special events.

According to McKay, the series is organized by the DLS Development Committee, comprised of individuals who meet annually to review a list of possible lecture from a wide variety of professional fields. From this list, the committee makes speaker recommendations to the Office of Institutional Advancement.

Most speakers are booked through agencies and specific dates for availability are set between the lecturer and the university. If a speaker is unavailable, the committee will attempt to contact another person from the recommendation list until speakers are scheduled for all five programs.

As one of the organizers of the

series, McKay says that speakers are chosen based on their national and international recognition and their ability to spark thought-provoking discussion. Speakers must also be willing to participate in a Q & A session after their lecture.

"A good Distinguished Lecturer Series speaker will challenge you to think in new ways, or to see an issue from different perspectives," said McKay. "These experiences are all the more valuable when a speaker's background or profession coincides with a student's course of study."

Others scheduled to appear as part of the Distinguished Lecturer Series for 2002-2003 include:

• Louis Freeh & Stansfield Turner, former FBI Director and former CIA Director, respectively; "Homeland Security and Interagency Cooperation, Nov. 22.

• U.S. Sen. Fred Thompson, "Threats to America: Present and Future-Terrorism and Beyond," Feb. 14, 2003.

• Christos M. Cotsakos, Chairman of the Board and CEO, E*Trade Inc., "Changing the Rules of Engagement," March 28, 2003.

• The Capitol Steps, comedy troupe, "An Evening with the Capitol Steps," May 2, 2003.

Past speakers have included ex-President Gerald Ford, former prime minister of Great Britain Lady Margaret Thatcher, Secretary of State Colin Powell, Vice-President Richard Cheney, author Isaac Asimov and filmmaker Spike Lee.

Smith was chosen as this year's series opening speaker for her theatrical approach toward societal issues.

"I think we'll probably see a more powerful statement on these issues than would have been provided by someone giving a straight lecture," said McKay.

For more information on the Distinguished Lecturer Series, call the Office of Institutional Advancement at (973)720-2934. For ticket availability and to purchase single tickets call the Shea Center Box Office at (973)720-

UNIVERSITY DAY '02 EVENTS

Zanfino Plaza Events (rain location: Wightman Gn)

10 a.m.-3 p.m.: A DV-8 Productions D.J. spins our favorite rock, pop and hip-hop tunes. Requests welcome!

11 a.m.-12:45 p.m.: Downshallow - Rock to the heavy sound of this amazing quartet as they perform both original tunes and covers of rock and roll favorites!

1-2:45 p.m.: The Amy Ward Band - A sexy sextet with three women singers that put an original twist on r&b, funk and rock favorites, guaranteed to heat up the day!

11 a.m.-2 p.m.: Club & Organization Fair - Is there a club at WP for you? Find out by chatting with student group representatives. You'll be surprised by the variety and diversity to choose from! (rain location: Student Center 203-04-05)

10 a.m.-3 p.m.: MONSTER COASTER** - Feel every turn and drop of the world's best roller coasters! This interactive simulator will surround you with the sounds, sights and motions of famous roller coasters. Not for the faint of heart! ** Remains in self-contained tent in case of rain

10 a.m.-3 p.m.: Make Your Own Dog Tag* - Create an army style dog tag on a 1969 vintage U.S. Government issue dog tag machine. Comes complete with a military style ball-chain necklace. *Rain location: Student Center Ballroom

Caldwell Plaza Events (rain location: Student Center Ballroom)

Noon-2 p.m.: Picnic Lunch- Enjoy delicious wrap sandwiches, crispy fried chicken, corn dogs, mounds of pasta salad, fish fruit and more. Relax and enjoy the diverse entertainment offerings while you eat!

11-11:30 a.m.: WP Gospel Choir- Your feet won't stay still while you savor the sounds that this 60-member choir put out! You'll be proud to call them WP's very own!

11:30 a.m.-noon: Pioneer Steel Orchestra- Another William Paterson group to be proud of! These talented musicians will amaze you with these drums that were shipping containers in a former life.

Noon-12:45 p.m.: Jessica Owens- This folk singer will mesmerize you with her sweet voice, powerful guitar playing and sensitive lyrics.

1-1:45 p.m.: Jette Performance Group- An exciting fusion of jazz, funk, modern and hip-hop dance. This eight member diverse group performs to music from Bach to Limp Biskit and everything in-between.

2-2:45 p.m.: Clyde Roberts-Don Neary Trio- Still more WP talent! When not performing you'll find Clyde behind the scenes at WP. This talented group will leave you thirsting for more with their eclectic blend of rock, folk, blues and country!

10 a.m.-3 p.m.: High Definition Photos- Become the star as your image is superimposed onto magazine covers, famous places and more! Bring your friends and create a special photo.

10 a.m.-3 p.m.: Sign Shoppe- make your own custom sign, license plate, or sticker. Decorate your dorm room with your own personal statement!

Academic Events

8-9 a.m.

University-wide Breakfast, Atrium

9-10 a.m.

President's Address (faculty/staff), Shea Center

12:45-1:15 p.m.

Faculty Robing (snacks served), Atrium

1:30-2:30 p.m.

Convocation (new students/faculty), Shea Center

2:30-3:30 p.m.

Freshman Seminar Meetings, various locations

4-6 p.m.

Library Open House, Library

4:30-5:30 p.m.

Reception for Richard Light (faculty/staff), Restaurant, Student Center

Special Event: Dedication of the new Valley Road facility

10 a.m.

Shuttles to Valley Road begin

11-11:30 a.m.

Dedication Ceremony

11:30 a.m.-12:15 p.m.

Reception & Tours

12:15 p.m.

Shuttles to Main Campus

College Meetings

3:30-4:30 p.m.

Arts & Communication, Martini Rm., Hobart Hall

3:30-4:30 p.m.

Education, 324-325, Student Center

3:30-4:30 p.m.

Humanities and Social Sciences, Atrium Auditorium

3:30-4:30 p.m.

Business, Library Auditorium

3:30-4:30 p.m.

Science and Health, 200A, Science Hall

SPECIAL EVENING EVENT at Shea Center for Performing Arts

7:30 p.m. The Comedy of Adam Ferrara - Laugh with Standup Comic/Actor Adam Ferrara! Known for his detective role on ABC's *The Job*, Mr. Ferrara is an acclaimed comic is at home on the stages of the Improv and Catch A Rising Star as he is on the sound stage. He'll bring his trademark brilliant characterizations and hilariously accurate observations to the Shea Center stage for a University Day Special Event. Students, faculty and staff will spend an enjoyable evening laughing together at his comic brilliance. A perfect way to end the day and begin the semester! Be sure to arrive early, as this is one show only. As with all University Day events, admission to this unforgettable evening is free! FREE tickets available at the Welcome Tent and the Shea Center Box Office.

WPU freshmen should take advantage of school technology

We, at the Pioneer Times, would like to take this opportunity to welcome all incoming freshmen to William Paterson University. As you start on one of the most fascinating journeys of your life, may we encourage you to take full advantage of all that William Paterson has to offer.

You may be thinking now that being at a small college means that there won't be as many opportunities and available services, technologically speaking. Actually, quite the opposite is true. When you consider all of the technology it has to offer, Willy P is truly an advanced campus.

For one, the entire campus has Internet access. This is not just the dorms and computer labs, but every classroom also has a connection capability. Using the high-speed connection, you can download faster, research more quickly, and keep connected every hour of the day. One of the best places to start using the Internet here is at the David and Lorraine Cheng Library, where you have access to many databases in its Electronic Resource Room.

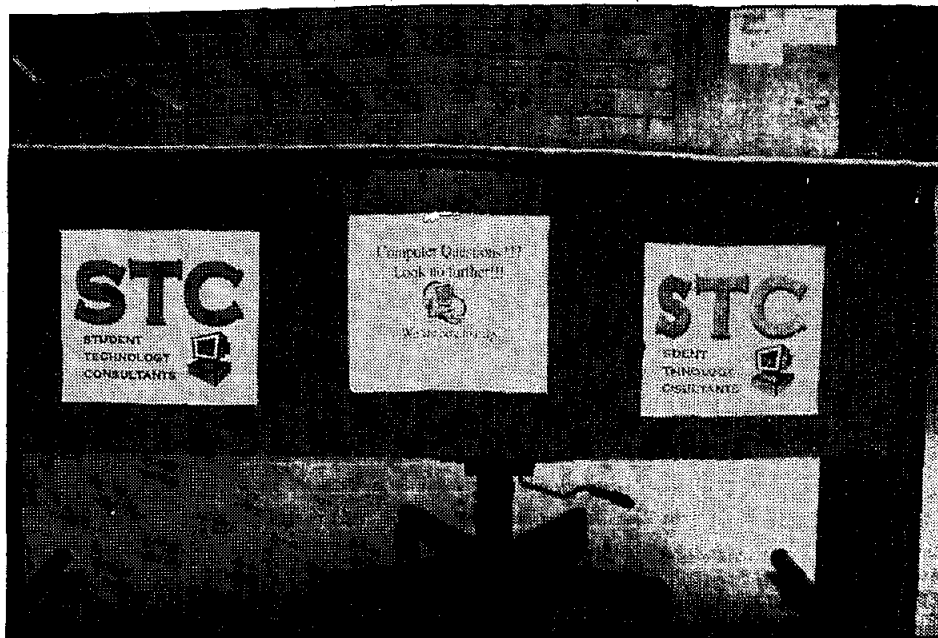
You can also explore technology in Hobart Hall, or as it is commonly called, the Communication Building. There, you can explore many facets of technology

EDITORIAL all in the same building. You will find TV studios that produce live shows, satellite dishes, a cable system, a computer lab, an audio production lab, a working radio station and a film studio.

Another great place at Willy P is the Atrium, a building that not only houses computer labs, but also a writing center, a language lab, and a tutorial center. Here you can work on a foreign language, write a paper, get help with your homework, or do Internet research. Free computer software instructional courses are also offered throughout the semester in the Atrium, including Microsoft applications and web design.

If you're more interested in the sciences, facilities at William Paterson can help you dissect, create and explore many things. There are labs equipped for biochemistry, neurobiology, biotechnology and molecular biology. You can even use DNA equipment.

If you play your cards right, you can do each of these things at William Paterson. So start early, because there is a lot here that you will want to explore.



PT photo by Robin Kavanagh

The computer labs in the Atrium come with personnel to answer any questions, another plus to WPU's technology services.

Love us? Hate us? Let us know!
Send Letters to the Editor to:
pioneertimes@student.wpunj.edu

Calendar of Events Sept. 3rd-11th

By Kerry Johnson
Calendar Editor

Tuesday, Sept. 3

University Day

Student teachers meet for orientation from 9:30 a.m. to 12:30 p.m. in Science Hall 200A. The students begin student teaching assignments Wednesday in more than 139 New Jersey schools. A workshop for 80 university supervisors follows at 3 p.m. in Student Center Rooms 203, 204 and 205.

Singer/Songwriter Clyde

Roberts performs at Caldwell Plaza from 2 to 3 p.m. Roberts is a supervisor and alumnus of WPUNJ (Class of 1984) and will be performing with Don Neary, Sanford Winnerman and Perry Cavari. All interested are invited to attend.

The David and Lorriane Cheng Library hosts an *Open House* from 4 to 6 p.m. All are invited to attend.

The *Graduate Assistantship Orientation* takes place in the

Atrium Auditorium at 4:30 p.m.

The orientation is for both new and returning graduate students. Break-out sessions will follow the orientation where students will be able to meet their Graduate Program Directors.

Wednesday, Sept. 4

Graduate Assistant

Orientation takes place at 12:30 p.m. in Student Center Room 213.

The William Paterson

Toastmaster's Club will meet at 4:45 p.m. in College Hall, Room 312. The club offers a supportive and encouraging environment where members and friends can practice public speaking and leadership skills. For further information contact Patricia Williams at ex. 2954.

New student orientation at Christos M. Cotsakos College of Business (CCCOB) for 6-7 p.m. in the Valley Rd. Auditorium, Rm. 1012.

Thursday, Sept. 5

New student orientation at

Christos M. Cotsakos College of Business (CCCOB) for 6-7 p.m. in the Valley Rd. Auditorium, Rm. 1012.

Sunday, Sept. 8

The Catholic Campus

Ministry opening Masses are at 10:45 a.m. and 7:30 p.m. in the Prince of Peace Chapel located near Gate 1.

The David and Lorriane Cheng

Library is sponsoring an *E-Week* from Sept. 8 to 14. *E-Week* includes workshops and orientations highlighting online resources and services. Go to the Library webpage, www.wpunj.edu/library for a list of events.

University Police will be

hiring for student patrol from now until the end of September. All those interested may obtain an application from Sgt. Lynn Butler in the Campus Safety

Office. For further information call ex. 2689 or e-mail butler1@wpunj.edu.

The Ben Shah Galleries presents "*Watercolors in Abstract*" in the South Gallery, an "Art Department Faculty Exhibit" in the Court Gallery, and "John Cary: Recent Works" in the East Gallery. The exhibits run from Sept. 16 to Oct. 11. For further information call x-2654.

Wednesday, Sept. 11

An *ecumenical service* will be held to commemorate the one-year anniversary of Sept. 11, 2001 at 12:30 p.m. in the Prince of Peace Chapel.

Please send calendar submissions to Kerry Johnson at Johnsonk@student.wpunj.edu.

ENTERTAINMENT REVIEWS

80s rockers alive and well

By Roin Kavanagh
Staff Writer

Somenay say their time is over. I say, no way.

Not aer witnessing the spectacle that a last minute Def Leppard performance announcement created throughout the New York Metropolitan area in July.

Fourdays before the concert was to take place at Irving Plaza in Greenwich Village, and five days before their new CD release, rock radio stations from WDHA-M to Q-104.3 announced not-so demurely that the 25-year rock legends from Great Britain would perform for one night in the small club venue.

Ticks went on sale the next day, only to all out in seven minutes. Doors to the concert opened at 8:00 p.m. on July 29 the line to get in was still wrapped around the corner at 9:15. They came from the farthest reaches of the Metropolis, braving a nighttime heat advisory. They stood, and sweat, decked in garb ranging from worn out, beat up "Hyster" t-shirts (obvious relics from the '80s) and jeans, to spiked dog collars with petagrams hanging, hippie gauze skirts, and polo shirts over khakis.

The young, teenage-types came, stood next to the older, 20- to 30-something generation, while the aging elders hung from the balconies. All age, all race and all religious differences fell to the wayside because this motley crew of people were exactly the same when it came

down to it—they were there to rock.

"Do you wanna get rocked?" lead singer Joe Elliot asked of the crowd as he and his cohorts launched into their 90's hit "Let's Get Rocked", setting the tone for the evening. Immediately, every mouth in the gutted ballroom lined with bars serving alcohol and the like, began to silently (and not so silently) spew every word of every song, while their heads rocked in true headbanger style and hands sporting the devilish index and pinky extension, punched the air above.

Had the room not been already been unbearably hot and humid, none could deny that the crowd's energy and enthusiasm baked the ballroom. Lead guitarists Phil Collen and Vivian Campbell took turns addressing the rocking and writhing crowd, covered in sweat midway into the first song.

The play-list ran the gamut from old hits from their breakthrough album "Pyromania", to newer ones, such as "Now" off of the newly released "X" album. But it didn't matter; the fans soaked up every word and chord that traveled through the air into hungry ears.

The band must have known how parched the area was for their music, for it left just as abruptly as it came. The concert lasted about one hour. I suppose you can't blame them; the quintet are all in their '40s and rather unaccustomed to the steamy New York weather. Elliot probably had to have someone peel his signature black leather pants off him when the show was over.

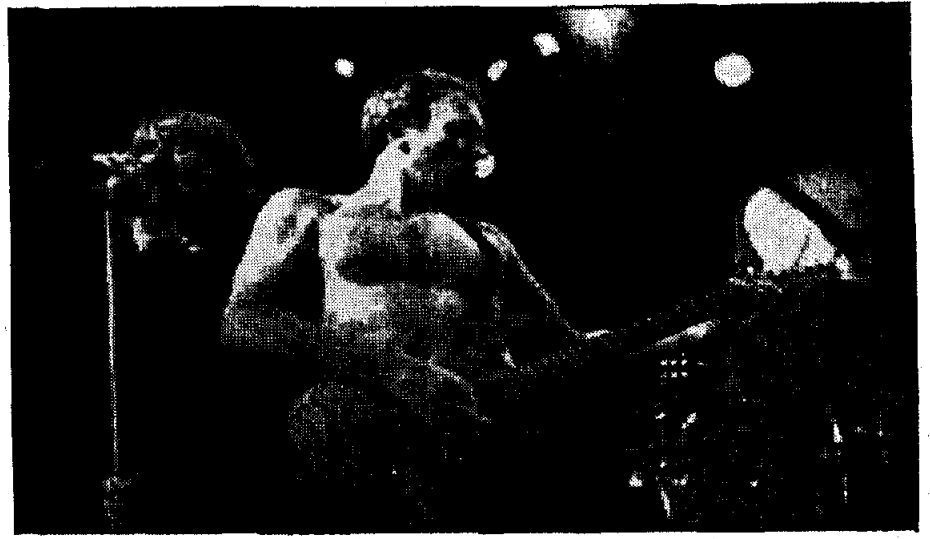


Photo by Rahav Segev courtesy of Island Def Jam Records

In a final farewell to the area, Def Leppard scheduled an in-store CD signing at the Wal-Mart in Saddle River. Again, fans from all walks crawled out of the woodwork for a glimpse of the rock legends that, on that day, released their 10th album. The first people in line at the table, waited patiently in the store since 7:00 a.m., awaiting the band's arrival at 6 p.m.; they didn't come until 7:30 p.m. But no matter, they were no less ecstatic.

"X" was released on July 30 and represents a new side to the band, which was pigeonholed in the '80s as a heavy metal group. Laced with catchy, yet predictable ballads, as well as good rock songs, the album is a must for anyone who appreciates good music.

In an interview published on the Def Leppard Web site, Elliot describes the new music as "just a good rock record".

"Right now we're into just making a good rock record that appeals to more than just someone with a Metallica T-shirt on," he said.

Only time will tell who will pick up on the new vibe. The band is currently in Europe promoting "X", but will be back in December to kick-off its US tour. Worth the wait, though. This band is a must see.

Keep reading the Pioneer Times for more CD and concert reviews, as well as artist interviews coming up this year. Interested in writing some? E-mail Prof. Birge at birgee@wpunj.edu.

'Signs' a good, clean scare; another Shymalan success

By Roin Kavanagh
Staff Writer

Do you believe in aliens?

Whether you do or not, filmmaker M. Night Shymalan's newest theatrical mindbender, "Signs", explores the possibilities apparent if they really did exist and the came to earth.

Playing on some truth—the existence of crop circles, which have been appearing in fields across the globe since the 1970s—"Signs" explores the power of belief through the eyes of Graham Hess (Mel Gibson), a reverend who has turned his back on his faith after the death of his wife. He lives on a farm outside Philadelphia with his two children, Morgan (Rory Culkin) and Bo (Abigail Breslin), and brother, Merrill (Joaqui Phoenix), who moved in to help after Hess' wife's death.

Stiltreeling from tragedy, this rural family tires to make iron their own, until one morning barking dogs bring to their attention a massive, elaborate crop sign in their own cornfields. Searching for explanations



Photo by Frank Masi/Buena Vista Pictures

Mel Gibson and Rory Culkin look in disbelief at the signs that appear in their fields overnight.

both rational and earthly, the Hess' are shown little by little that their strange occurrence was happening

simultaneously around the world.

Though the story, accented on the screen with chilling sound effects and dark scenes, has an apocalyptic feel to it throughout, the mystery lies not with whether the aliens are really coming or if the crop signs are a worldwide hoax, but rather about whether the aliens have come in peace, or to ravage the planet. The answers are well-hidden until the very end.

With likeable and believable characters, "Signs" keeps you on the edge of your seat until the very end. Highlights include the appearance of the newest Culkin child to enter the spotlight (Rory coming after the successes of older brothers Maculay and Kieren), a precocious, though sedate little girl in Breslin, and a minor character role played by Shymalan himself.

Staying true to the form of his previous hits, "The Sixth Sense" and "Unbreakable", Shymalan has surely done it again. For those who like a good scare without the gore, "Signs" is a great pick. Thrilling, with mild violence, comedy relief courtesy of the somewhat immature antics of Phoenix and Gibson's trademark mannerisms, this movie is definitely worth the \$8.25.

Study relief found at nearby Tony's Belmont Coffee Shop

By Pioneer Times
Staff

It's 11 a.m. and you are exhausted from studying for a major test later in the day. Hunger pangs overpower you. Your thoughts turn to the culinary savior—The Field Worker!!

That's the intriguing name given to an eatery experience fit for a hungry collegian.

Tony's Belmont Coffee Shop, also dubbed the Campus Café, prides itself as

home of The Field Worker: two eggs, home fries, taylor ham and cheese on a roll. For \$3.75, it's a bargain. And with delivery available until 5 a.m. (closing time), you can't beat the service.

What the small Belmont Avenue eatery lacks in sophistication, it makes up for in its menu offerings: cheese steaks, burgers, milk shakes, salads, hero sandwiches, omelets, pancakes, gyros, etc.

During the school year, steamtable specials include homemade soups, baked ziti, chicken parmesan and other tasty items.

On any given day, in-house customers sit on stools and chat with owner Tony Atie, as he handles a myriad of duties, from cooking to serving to conversing with the diners. He advertises that he serves "the best coffee in town", and few would argue otherwise.

William Paterson students provide the bulk of his business and truly enjoy the fare. Music major Omar Little lives down the street from the coffee shop and is a frequent customer. He especially likes the grilled chicken sandwich, which he calls "quite tasty".

While The Field Worker is a popular selection for the WPU crowd, other some non-collegiate favorites are the Philly cheese steak sandwiches, and french fries with cheese or gravy.

Some adventurous students even opt for the aptly-named Belly Buster: double cheeseburger with bacon or Taylor ham, onions, eggs, Russian dressing, lettuce, tomatoes and a side of french fries.

Tony's Belmont Coffee Shop, 389 Belmont Ave., Haledon, Phone: 973-790-9782. Open 23 hours a day. Serving breakfast, lunch and dinner. Delivery from 8 p.m. to 5 a.m.

Pioneer Shuttle Schedule

CAMPUS LOOP SHUTTLE INFORMATION

DEPARTMENT OF PUBLIC SAFETY - PARKING AND TRANSPORTATION SERVICES
(973) 720-2780, 3000, 3001

MONDAY THROUGH FRIDAY - 7:30 AM THROUGH 11:30 PM

WHEN UTILIZING THE UNIVERSITY SHUTTLE SERVICE, STUDENTS ARE REMINDED TO ALLOW AN APPROPRIATE AMOUNT OF TRAVEL TIME.

	LOT 5	LOT 7	LOT 6	HERITAGE	PIONEER	WAYNE	LOT 5 ROW E
AM	7:30	7:32	7:34	7:40	7:42	7:58	7:55
	8:00	8:02	8:04	8:10	8:12	8:28	8:25
	8:30	8:32	8:34	8:40	8:42	8:58	8:55
	9:00	9:02	9:04	9:10	9:12	9:28	9:25
	9:30	9:32	9:34	9:40	9:42	9:58	9:55
	10:00	10:02	10:04	10:10	10:12	10:28	10:25
	10:30	10:32	10:34	10:40	10:42	10:58	10:55
	11:00	11:02	11:04	11:10	11:12	11:28	11:25
	11:30	11:32	11:34	11:40	11:42	11:58	11:55
PM	12:00	12:02	12:04	12:10	12:12	12:28	12:25
	12:30	12:32	12:34	12:40	12:42	12:58	12:55
	12:30	12:32	12:34	12:40	12:42	12:58	12:55
	1:00	1:02	1:04	1:10	1:12	1:28	1:25
	1:30	1:32	1:34	1:40	1:42	1:58	1:55
	2:00	2:02	2:04	2:10	2:12	2:28	2:25
	2:30	2:32	2:34	2:40	2:42	2:58	2:55
	3:00	3:02	3:04	3:10	3:12	3:28	3:25
	3:30	3:32	3:34	3:40	3:42	3:58	3:55
	4:00	4:02	4:04	4:10	4:12	4:28	4:25
	4:30	4:32	4:34	4:40	4:42	4:58	4:55
	5:00	5:02	5:04	5:10	5:12	5:28	5:25
	5:30	5:32	5:34	5:40	5:42	5:58	5:55
	6:00	6:02	6:04	6:10	6:12	6:28	6:25
	6:30	6:32	6:34	6:40	6:42	6:58	6:55
	7:00	7:02	7:04	7:10	7:12	7:28	7:25
	7:30	7:32	7:34	7:40	7:42	7:58	7:55
	8:00	8:02	8:04	8:10	8:12	8:28	8:25
	8:30	8:32	8:34	8:40	8:42	8:58	8:55
	9:00	9:02	9:04	9:10	9:12	9:28	9:25
	9:30	9:32	9:34	9:40	9:42	9:58	9:55
	10:00	10:02	10:04	10:10	10:12	10:28	10:25
	10:30	10:32	10:34	10:40	10:42	10:58	10:55
	11:00	11:02	11:04	11:10	11:12	11:28	11:25
	11:30	11:32	11:34	11:40	11:42	11:58	11:55
AM	12:00	12:02	12:04	12:10	12:12	12:28	12:25
	12:30	12:32	12:34	12:40	12:42	12:58	12:55
	1:00	1:02	1:04	1:10	1:12	1:28	1:25
	1:30	1:32	1:34	1:40	1:42	1:58	1:55
	2:00	2:02	2:04	2:10	2:12	2:28	2:25

1600 VALLEY ROAD SHUTTLE INFORMATION

DEPARTMENT OF PUBLIC SAFETY - PARKING AND TRANSPORTATION SERVICES
(973) 720-2780, 3000, 3001

MONDAY THROUGH FRIDAY - 7:30 AM THROUGH 11:30 PM

WHEN UTILIZING THE UNIVERSITY SHUTTLE SERVICE, STUDENTS ARE REMINDED TO ALLOW AN APPROPRIATE AMOUNT OF TRAVEL TIME.

	Wayne Hall	Lot 6	Lot 5 Row E	1600 Valley Road	Power Arts	College Hall
AM	7:30	7:32	7:34	7:40	7:42	7:58
	8:00	8:02	8:04	8:10	8:12	8:28
	8:30	8:32	8:34	8:40	8:42	8:58
	9:00	9:02	9:04	9:10	9:12	9:28
	9:30	9:32	9:34	9:40	9:42	9:58
	10:00	10:02	10:04	10:10	10:12	10:28
	10:30	10:32	10:34	10:40	10:42	10:58
	11:00	11:02	11:04	11:10	11:12	11:28
	11:30	11:32	11:34	11:40	11:42	11:58
PM	12:00	12:02	12:04	12:10	12:12	12:28
	12:30	12:32	12:34	12:40	12:42	12:58
	1:00	1:02	1:04	1:10	1:12	1:28
	1:30	1:32	1:34	1:40	1:42	1:58
	2:00	2:02	2:04	2:10	2:12	2:28
	2:30	2:32	2:34	2:40	2:42	2:58
	3:00	3:02	3:04	3:10	3:12	3:28
	3:30	3:32	3:34	3:40	3:42	3:58
	4:00	4:02	4:04	4:10	4:12	4:28
	4:30	4:32	4:34	4:40	4:42	4:58
	5:00	5:02	5:04	5:10	5:12	5:28
	5:30	5:32	5:34	5:40	5:42	5:58
	6:00	6:02	6:04	6:10	6:12	6:28
	6:30	6:32	6:34	6:40	6:42	6:58
	7:00	7:02	7:04	7:10	7:12	7:28
	7:30	7:32	7:34	7:40	7:42	7:58
	8:00	8:02	8:04	8:10	8:12	8:28
	8:30	8:32	8:34	8:40	8:42	8:58
	9:00	9:02	9:04	9:10	9:12	9:28
	9:30	9:32	9:34	9:40	9:42	9:58
	10:00	10:02	10:04	10:10	10:12	10:28
	10:30	10:32	10:34	10:40	10:42	10:58
	11:00	11:02	11:04	11:10	11:12	11:28
	11:30	11:32	11:34	11:40	11:42	11:58

DOWNTOWN PATERSON SHUTTLE INFORMATION

MONDAY THROUGH FRIDAY - 7:30 AM THROUGH 11:30 PM

WHEN UTILIZING THE UNIVERSITY SHUTTLE SERVICE, STUDENTS ARE REMINDED TO ALLOW AN APPROPRIATE AMOUNT OF TRAVEL TIME.

	NU TRANSIT	WAYNE HALL	LOT 5 ROW E	HILLSIDE	LOT 6	HERITAGE	PIONEER
AM	7:30	7:50	7:55	8:00	8:05	8:1	8:12
	8:30	8:50	8:55	9:00	9:05	9:1	9:12
	9:30	9:50	9:55	10:00	10:05	10:1	10:12
	10:30	10:50	10:55	11:00	11:05	11:1	11:12
	11:30	11:50	11:55	12:00 PM	12:05	12:1	12:12
PM	12:30	12:50	12:55	1:00	1:05	1:1	1:12
	1:30	1:50	1:55	2:00	2:05	2:1	2:12
	2:30	2:50	2:55	3:00	3:05	3:1	3:12
	3:30	3:50	3:55	4:00	4:05	4:1	4:12
	4:30	4:50	4:55	5:00	5:05	5:1	5:12
	5:30	5:50	5:55	6:00	6:05	6:1	6:12
	6:30	6:50	6:55	7:00	7:05	7:1	7:12
	7:30	7:50	7:55	8:00	8:05	8:1	8:12
	8:30	8:50	8:55	9:00	9:05	9:1	9:12
	9:30	9:50	9:55	10:00	10:05	10:1	10:12
	10:30	10:50	10:55	11:00	11:05	11:1	11:12

SATURDAY CAMPUS LOOP SHUTTLE INFORMATION

WHEN UTILIZING THE UNIVERSITY SHUTTLE SERVICE, STUDENTS ARE REMINDED TO ALLOW AN APPROPRIATE AMOUNT OF TRAVEL TIME.

	WAYNE	LOT 5 ROW E	LOT 6	LOT 7	LOT 6	HERITAGE	PIONEER	NU TRANSIT
AM	10:00	10:01	10:10	10:12	10:14	10:20	10:22	10:40
	11:00	11:01	11:10	11:12	11:14	11:20	11:22	11:40
PM	12:00	12:01	12:10	12:12	12:14	12:20	12:22	12:40
	1:00	1:01	1:10	1:12	1:14	1:20	1:22	1:40
	2:00	2:01	2:10	2:12	2:14	2:20	2:22	2:40
	3:00	3:01	3:10	3:12	3:14	3:20	3:22	3:40
	4:00	4:01	4:10	4:12	4:14	4:20	4:22	4:40
	5:00	5:01	5:10	5:12	5:14	5:20	5:22	5:40
	6:00	6:01	6:10	6:12	6:14	6:20	6:22	---

SUNDAY CAMPUS LOOP SHUTTLE INFORMATION

WHEN UTILIZING THE UNIVERSITY SHUTTLE SERVICE, STUDENTS ARE REMINDED TO ALLOW AN APPROPRIATE AMOUNT OF TRAVEL TIME.

	WAYNE	LOT 5 ROW E	HERITAGE	PIONEER	SHOPRITE	POWERS ARTS	NU TRANSIT
AM	10:00	10:05	10:10	10:12	10:27	10:2	10:45
	11:00	11:05	11:10	11:12	11:27	11:2	11:45
PM	12:00	12:05	12:10	12:12	12:27	12:2	12:45
	1:00	1:05	1:10	1:12	1:27	1:3	1:45
	2:00	2:05	2:10	2:12	2:27	2:3	2:45
	3:00	3:05	3:10	3:12	3:27	3:3	3:45
	4:00	4:05	4:10	4:12	4:27	4:3	4:45
	5:00	5:05	5:10	5:12	5:27	5:3	5:45
	6:00	6:05	6:10	6:12	---	---	---

1600 VALLEY ROAD SHUTTLE INFORMATION (continued)

MONDAY THROUGH FRIDAY - 7:30 AM THROUGH 11:30 PM

	Wayne Hall	Lot 6	Lot 5 Row E	1600 Valley Road	Power Arts	College Hall
PM	4:35	4:40	4:50	5:00	5:05	5:10
	5:05	5:10	5:20	5:30	5:35	5:40
	5:15	5:20	5:30	5:40	5:45	5:50
	5:25	5:30	5:40	5:50	5:55	6:00
	5:35	5:40	5:50	6:00	6:05	6:10
	5:45	5:50	6:00	6:10	6:15	6:20
	5:55	6:00	6:10	6:20	6:25	6:30
	6:05	6:10	6:20	6:30	6:35	6:40
	6:15	6:20	6:30	6:40	6:45	6:50
	6:25	6:30	6:40	6:50	6:55	7:00
	6:35	6:40	6:50	7:00	7:05	7:10
	6:45	6:50	7:00	7:10	7:15	7:20
	6:55	7:00	7:10	7:20	7:25	7:30
	7:05	7:10	7:20	7:30	7:35	7:40
	7:15	7:20	7:30	7:40	7:45	7:50
	7:25	7:30	7:40	7:50	7:55	8:00
	7:35	7:40	7:50	8:00	8:05	8:10
	7:45	7:50	8:00	8:10	8:15	8:20
	7:55	8:00	8:10	8:20	8:25	8:30
	8:05	8:10	8:20	8:30	8:35	8:40
	8:15	8:20	8:30	8:40	8:45	8:50
	8:25	8:30	8:40	8:50	8:55	9:00
	8:35	8:40	8:50	9:00	9:05	9:10
	8:45	8:50	9:00	9:10	9:15	9:20
	8:55	9:00	9:10	9:20	9:25	9:30
	9:05	9:10	9:20	9:30	9:35	9:40
	9:15	9:20	9:30	9:40	9:45	9:50
	9:25	9:30	9:40	9:50	9:55	10:00
	9:35	9:40	9:50	10:00	10:05	10:10
	9:45	9:50	10:00	10:10	10:15	10:20
	9:55	10:00	10:10	10:20	10:25	10:30
	10:05	10:10	10:20	10:30	10:35	10:40

SATURDAY 1600 VALLEY ROAD SHUTTLE INFORMATION

SATURDAY - 7:30 AM THROUGH 6:30 PM

WHEN UTILIZING THE UNIVERSITY SHUTTLE SERVICE, STUDENTS ARE REMINDED TO ALLOW AN APPROPRIATE AMOUNT OF TRAVEL TIME.

	<u>WAYNE</u>	<u>LOT 5 ROW E</u>	<u>1600 VALLEY ROAD</u>	<u>PREAKNESS CENTER</u>	<u>POWER ARTS</u>
AM	7:30	7:35	7:50	8:05	8:20
	8:30	8:35	8:50	9:05	9:20
	9:30	9:35	9:50	10:05	10:20
	10:30	10:35	10:50	11:05	11:20
	11:30	11:35	11:50	12:05 PM	12:20
PM	12:30	12:35	12:50	1:05	1:20
	1:30	1:35	1:50	2:05	2:20
	2:30	2:35	2:50	3:05	3:20
	3:30	3:35	3:50	4:05	4:20
	4:30	4:35	4:50	5:05	5:20
	5:30	5:35	5:50	6:05	6:20
	6:30				

Speert announces new dean, VP of student development

Dr. Joan Martone has been appointed associate vice president and dean of student development.

Martone holds a Ph.D. from Georgia State University, an M.S. from Southern Illinois University, and a B.A. from the University of New Mexico.

He served most recently as the vice president for student affairs at the State University of New York, Institute of Technology in Utica from 1999-2002; as assistant vice president of student services at American University in Washington, D.C. from 1992-1999; as assistant vice president for residential

life and housing at the State University of New York at Albany from 1981-1992 and associate director of housing (from 1972-1981) and housing operations coordinator (from 1972-1975) at the Georgia Institute of Technology.

His teaching experience includes adjunct appointments in the Kogod College of Business Administration and the School of Education at American University (1992-1999), and in the College of Education at the State University of New York at Albany (1989-1992).

Field hockey

Continued from Page 8

back on defense while also pushing forward offensively.

Junior co-captain Heidi Koenig (2 goals, 2 assists), who Cohen think will have a big season in 2002, and fellow junior Erica Riley will play both at link and back. Both are returning starters who have been key contributors the past two seasons. Williscroft and fellow freshman Deanna Wall, who played at Hinshillwood's alma mater, Collingswood High School, will both split time between the two positions. Also playing link will be freshman Scout Bargiel, a highly touted newcomer from Tranquility.

Forwards where the Pioneers have great depth and a few potentially explosive scorers. Over the previous two seasons Hinshillwood (12 goals, 4 assists in 2001), the NJAC Rookie of the Year in 2000, scored 21 goals and dished out nine assists. This season, she will be asked to pace the Pioneers offensively.

Light

Continued from Page 1

Dr. Richard Seal, executive assistant to the provost. "Since then, we have designated the first day of the fall semester as University Day, to recognize our achievements, welcome students and faculty back to campus, hold convocation for first-year students, and celebrate a sense of community."

"Making the Most of College" has received rave reviews by educators, parents and students. Often noted for its easy-to-read style and specific suggestions for students and educators, this book has been named a "valuable read" by publications such as *Newsweek*, *Booklist*, *The Christian Science Monitor* and *The Library Journal*.

John S. Rosenberg said in a *Harvard Magazine* review that "the book recounts 100-some excerpts from interviews with Harvard College students...revealing vignettes about how undergraduates make the most of their precious hours inside the classroom and beyond. Because the stories convey in students' words how they study, learn, and react to their peers within a residential college, it is memorably unlike anything else parents, students, soon-to-be undergraduates and educators have read."

Light began 10 years of interviewing Harvard seniors after feeling dismay at the comments of a senior administrator at a gathering of faculty and administrators from more than 50 colleges and universities. The administrator admitted to mak-

ing a special effort of "getting out of their [the new students'] way." Instead of helping new students to succeed, the school appeared to be neglecting them.

In a recent conversation, Light discussed the three most difficult adjustments freshmen have to make in college. The first one, making an effort to get to know faculty members, requires a certain amount of courage on the students' part, Light remarked.

"But those students who have the best experiences are those who have made the effort to know faculty," Light said.

The second, time management involves the student finding the right balance between academic work, extra-curricular activities, such as part-time jobs, clubs and sports and making new friends. The third adjustment involves the students choosing their courses wisely. Light discourages loading up on required courses in the first and second years to get them out of the way. He suggests taking courses in the fields of your interest early on.

"It helps to answer the questions of what they [the students] are good at and what they enjoy," Light said.

Coming to terms with what you'd like to do is the students' major job in the sophomore year, according to Light.

"Talented students will choose a field with astonishingly little information on what that field requires," Light said, adding that students need to be proactive

"She needs to take on more of a leadership role on the forward line," Cohen said. "She's got to produce more goals and be more vocal on the field. (But) I think she's ready for it."

She will have help from fellow juniors Heather Aquino (5 goals, 7 assists) and Kim Tinker (3 goals in 7 games), both players who are capable of having breakthrough seasons. The depth comes from a trio of talented freshmen in Cindy Conklin, Mindy Coxe and Nina Vincent. Bargiel will also see some time at forward.

Finally, the Pioneers will be looking for a replacement for second team All-Mid Atlantic Region netminder Jen Menges, who joins the coaching staff as a goalie coach. Menges will have a trio of young, yet savvy goalies to work with: Sophomore Kelly Harchetts was Menges' primary backup in 2001, while freshmen Katelyn Ferguson and Jessie Mull both come aboard ready to push for playing time.

Report provided courtesy of WPU Athletics

BRIEFS

Pass/Fail option deadline, rules

Students may request the Pass/Fail option from Sept. 3 through the 13. The pass/fail option may also be requested the first day of the 2nd quarter session for 2nd quarter courses. Students will receive credit for a course under this option if they achieve a grade of D or above, and there will be no effect on a student's GPA for a class taken Pass/Fail if the class is passed.

However, if a grade of F is earned in a Pass/Fail course, it is calculated into the student's Grade Point Average. The decision to take a course Pass/Fail cannot be reversed once the form is submitted.

Students can use the Pass/Fail for any General Education requirement, excluding Writing Effective Prose and may take one class Pass/Fail per semes-

ter for four semesters throughout their academic career. Major requirements and co-requirements may not be taken Pass/Fail.

Course work may not be taken Pass/Fail for the following categories of graduate studies: GM, GC, GE, and GT. To register for Pass/Fail, fill out a form at the Registrar's office.

Last chance to get your money back

The last day for 100 percent refund for withdrawal from the fall semester is Sept. 11, and the last day for 50 percent refund is Oct. 7. This does not apply to financial aid recipients.

Last chance to drop a class

The last day for academic withdrawal from fall semester courses is Oct. 21.

Book requirements listed online

The WPU website, www.wpunj.edu, has a link to e-follet.com, which has listings and prices of books for every class. Students have the choice of purchasing books online, or traveling to the bookstore in the Student Center for their books. To access the site, choose the bookstore link under administrative offices.

New building

Continued from Page 1

take theory and turn it into practice. The center is also a laboratory for academic research and scholarship.

In the lab there will be simulation games using real time data-feeds, ITV learning initiatives, training seminars, simulated financial market analysis, and much more.

The building is slated to hold the CCOB Library, where students will find more hands-on information for research.

The new building will also house classes for the College of Education.

For the fall 2002 semester, according to Boronico, primarily juniors and seniors will be in the building. The parking arrangements at the new building is still being developed, and Boronico calls it a "working plan" to prevent congestion.

The new building is approximately 1.5 miles from the main campus, according to the WPUNJ map of the university.

Cuts

Continued from Page 1

approximately two-dozen positions were frozen according to Bolyai.

However, class size is not expected to increase from where it is now. As of the 2002 fiscal year, at William Paterson, the average undergraduate class size is 22 and the student to faculty ratio is 12:1.

"There should not be a noticeable difference," Bolyai said, referring to any changes that may appear in the classroom setting.

However, despite the budget cuts, the university expects an increase in enrolment.

"We're retaining more students and we're an attractive university," Bolyai said Bolyai. "We expect a five percent increase in enrollment. We anticipate the growth we're going to experience."

Interested in working with us? Contact Prof. Birge @ ex. 2656 or birgee@wpunj.edu

PIONEER SPORTS

Men's, women's Pioneer Soccer gears up for fall season

Pioneer soccer is looking forward to a banner season, beginning this week. Here's a look at the men's and women's lineups and prospects for the fall season.

Men's

After a promising 2001 season, Brian Woods added to his vast soccer knowledge with some things he saw during spring practice. The mix, he hopes, will deliver William Paterson into the New Jersey Athletic Conference men's soccer elite.

The 11th year coach, who possesses cross-country soccer connections thanks to his involvement with New Jersey-based Match Fit Academy, infused his program with talented newcomers from as far away as California and Virginia in addition to prospects from the Garden State.

"I saw them play in tournaments around the country. All of the travelling I did paid off," said Woods, whose program went 8-9 (3-6 NJAC) in 2001.

For this season, he also plans to switch the Pioneers' plan of attack. The Pioneers will go with a 5-3-2 formation after seeing how his returning players embraced it while playing against Division I programs during the spring.

"It worked out well," Woods said. "We were getting people forward in the spring. In the 5-3-2, the midfield guys don't necessarily have a marking responsibility. And with our speed in the midfield, it makes it tough for opponents to mark our guys."

The midfield is the strength of the 2002 Pioneers, with two of the top talents in the NJAC returning in senior Mike Guerdat (8 goals, 3 assists) and sophomore Carlos Ortiz (3 goals). Guerdat, a second team National Soccer Coaches Association of America All-Metro Region performer, tallied four game-winning goals as a forward last



Photo courtesy of WPU Athletics

Women's soccer enters the fall season with no seniors, but a strong team.

season, but Woods thinks his scoring skills are better suited to the midfield. Meanwhile Ortiz, a second team All-NJAC and third team All-Region honoree, established himself as a fleet-footed playmaker during his rookie season. Juniors Brian Solheim and Dave Szeller offer additional depth and experience. Four other freshmen also factor into the midfield mix: Evrim Can of Ridgefield, Marvin Ochoa of Arlington, VA, 6-2 Omar Schovic of Garfield and Daniel Walker of Walnut Creek, CA.

Playing in front of them at forward will be junior Jason Irizarry and sophomore Dave Lloyd. Irizarry could also play in the midfield and on defense, although he showed a knack for clutch goal-scoring and all-around consistent play. Lloyd, meanwhile, appears poised for a breakthrough season after a strong spring. Sophomore Eric Kinkel, a speedy transfer from Middlesex County

College, will push for playing time and could enable Irizarry to shore up other areas on the pitch.

Defensively, the Pioneers return senior Jeff Mantz and sophomore Robert Voltz, both of whom enjoyed solid 2001 campaigns with Voltz emerging late and Mantz evolving into a leader. Freshmen Mike Charles of Teaneck and Andrew Barlow will challenge for starting assignments, as will Schovic. Look for Irizarry to see some time keeping opponents away from the backline as well.

At goalkeeper, the Pioneers have what Woods deemed one of the toughest battles of his 11 years as coach. Junior Chris Auriano and sophomore Mike Fedorczyk split time in 2001 and combined for a 1.29 goals against average and four shutouts. However, the incumbents will face a stiff challenge from freshman Nick Grabelle of Highland Park.

Women's

William Paterson is entering a rare women's soccer season without any seniors, yet Keith Woods does not see this as a negative.

"We're going to be as good as the experienced players we have now," the sixth-year coach said. "Most of the key people we have now are our juniors. They should know what it takes to be successful."

With eight junior starters returning, Woods thinks this is the group that will help the Pioneers reclaim their spot among the New Jersey Athletic Conference's elite after they just missed the conference playoffs last fall with an 8-6-2 record (5-3-1 NJAC). However, they did finish strong, going 7-2-1 in their final 10 games.

"I think momentum's going to carry us into the season," Woods said. The Pioneers will mix up their tactics more than in past seasons, as Woods

plans to employ either a 4-3-3, 3-4-3 or the more widely used 4-4-2 depending upon how the Pioneers are playing and also an opponent's game plan.

The plan to switch up tactically means that, up front, players will play at both midfield and forward. Among those is first team All-NJAC performer Amy Wieszun, a two-year starter at forward who led the team in scoring with 16 points (6 goals, 4 assists) in 2001 but may start out as an attacking midfielder.

Joining Wieszun up front are juniors Erin Finn (4 goals, 3 assists) and Kat McPhail (4 goals, 3 assists) and sophomores Bethany Daly (3 goals) and Rebecca Wisniewski (3 goals, 2 assists). Wisniewski tallied two game-winning goals, which tied her for the team lead last season.

Daly and Wieszun will also play in the midfield, Woods said, and the Pioneers have a solid returning corps of midfielders. Junior Sarah Stowe (2 goals) is a good defender with a strong shot, while junior Kelly Cruise was a part-time starter in 2001 who is solid in all aspects of the game. Freshman Lauren Lombardy of West Essex High School is a notable newcomer.

"If we can find consistent goal scorers," Woods said, "we'll be pretty good."

Defensively, juniors Allison McCarthy (2 goals), Lyndsey Birdsall and Linda Ziegler were all starters last season and will again fortify the backline for a team that allowed just 17 goals in 16 games. Junior Christine Thoms, who sat out last season, and sophomore Dana Moyle will also see plenty of time on the pitch.

Competing to be the Pioneers' last line of defense will be a pair of newcomers. Woods is excited about both sophomore Angelica Vargas and freshman Meaghan Koppel.

Report provided courtesy of WPU Athletics

Youth is king this field hockey season

After relying on a senior class that included first team All-American and Pioneer all-time leading scorer Lesley Dube in 2001, coach Hallie Cohen is hoping her younger players observed how the veterans went about their business and developed the winning tradition associated with William Paterson field hockey.

Although seven seniors exhausted their eligibility, Cohen is quite optimistic. This year's Pioneers feature only one senior, co-captain Leigh Brown, and a slew of talented juniors led by first team All-New Jersey Athletic Conference forward Krista Hinshillwood. However, Cohen makes this clear: If the Pioneers are to succeed, their fresh-faced sophomores and freshmen must play like veterans.

"I think they're a year more mature," the eighth-year coach

said. "They saw the sense of urgency and the sense of how much the seniors really wanted it. Now their approach shows what those older players were trying to instill in them. I think our juniors are going to step up."

There will be youth at every position, but not a lack of talent. Start with the defense. Brown (3 assists) has been one of the Pioneers' strongest performers as they have gone 27-8 over the past two seasons. She will either play as a sweeper or back, depending upon which formation Cohen employs. Junior Kim Hall, sophomores Ann Griffin, Cheryl Naurath (3 goals, 3 assists in 2001) and Rian Hamilton, and freshman Jen Williscroft further fortify the defense.

Look for a few links to see time at back, as links must get
SEE FIELD HOCKEY, PAGE 7



Photo courtesy of WPU Athletics
Younger players dominate WPU's field hockey team this season.

Pioneer Sports Home Games

By Kerry Johnson

Men's Soccer

All games are at Wightman Field
Sept. 1 and 2 — Salsbury Tournament 4 p.m.
Sept. 7 — Delaware Valley 1 p.m.
Sept. 8 — Castleton State 1 p.m.

Women's Soccer

All games are at Wightman Field
Sept. 4 — FDU-Florham 7 p.m.

Field Hockey

All games are at Wightman Field
Sept. 10 — Rosemont 7 p.m.

Volleyball

All matches are at the WPU Rec Center
Sept. 4 — Manhattenville 7 p.m.

Cross Country

At Garret Mountain, Home Course
Sept 7—WPU Invitational 10:00 a.m.