

PSTC

DEFEND

56

12-11-56

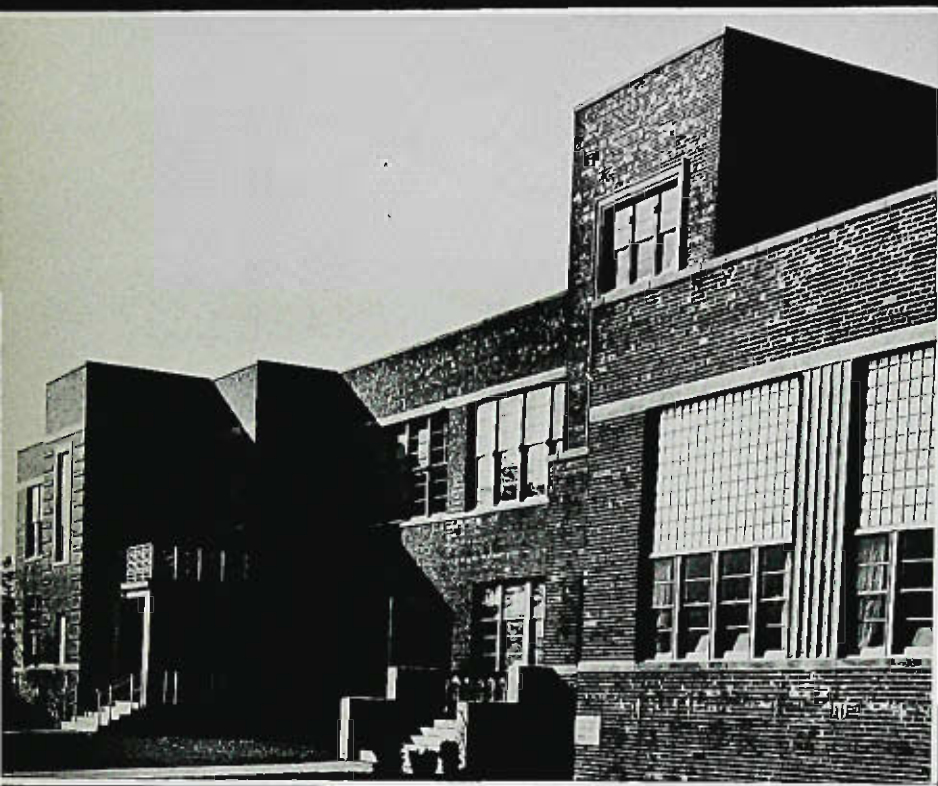
5

56

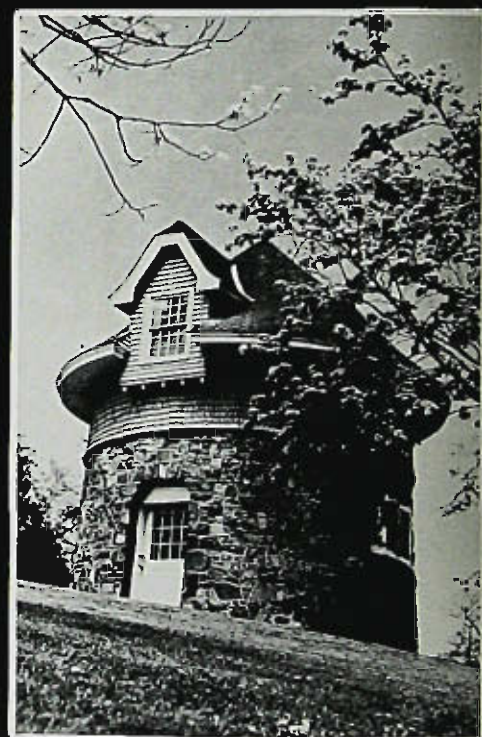
1956

PARSONS

NEW JERSEY
STATE TEACHERS
COLLEGE AT
PARTESSON



From the serenity of nature's
woodlands to the industry
of teacher training



From that of life's
necessity to the
purely aesthetic

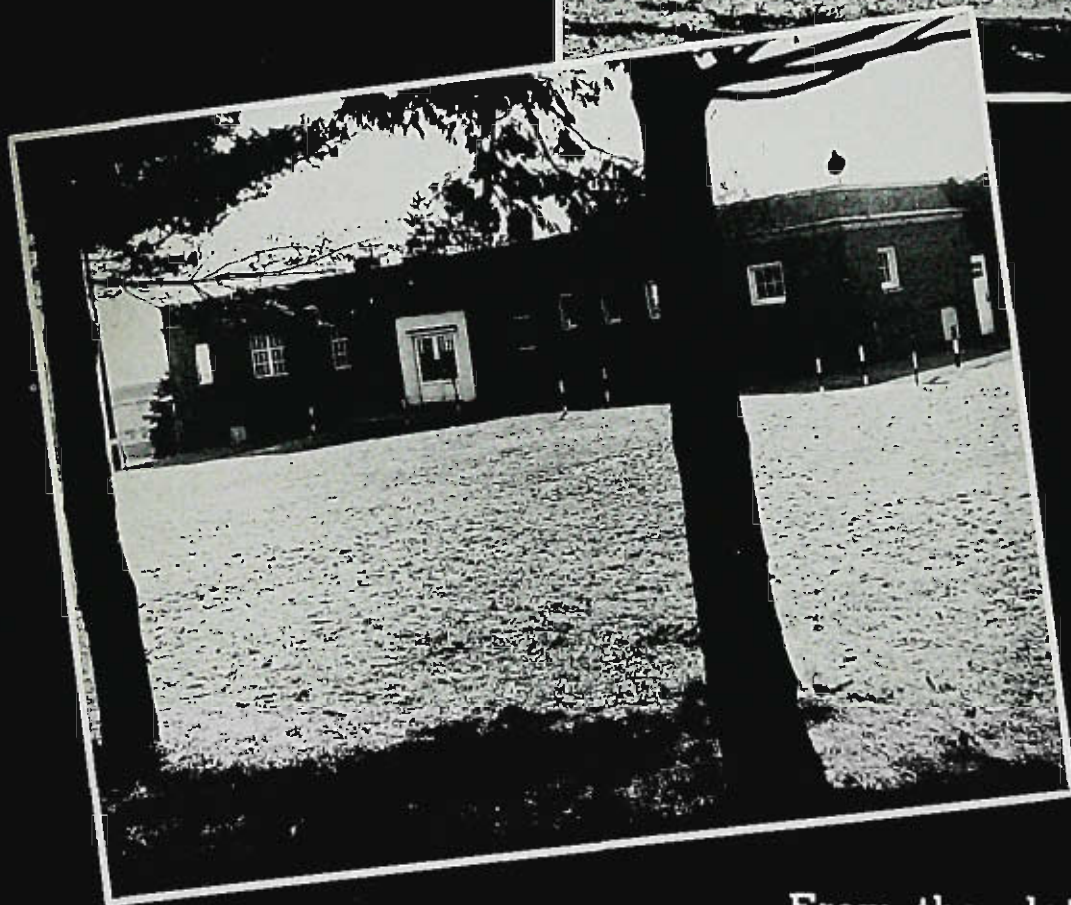
Administration Building

Sp. Col.
LB
1915
P3
A1
1950



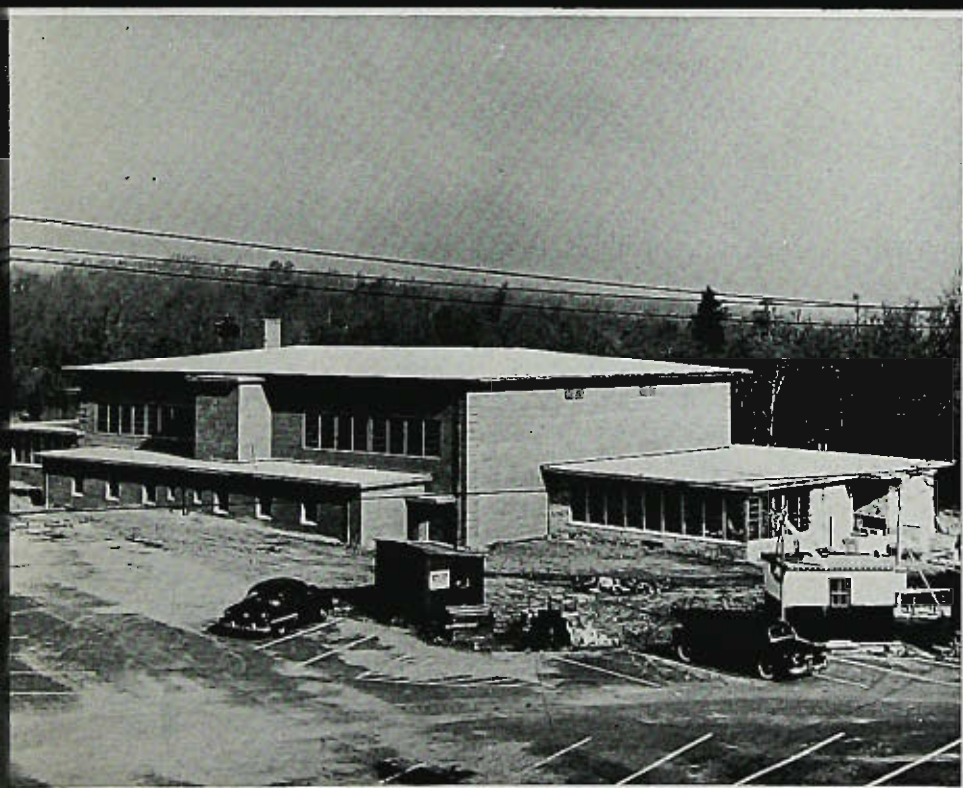
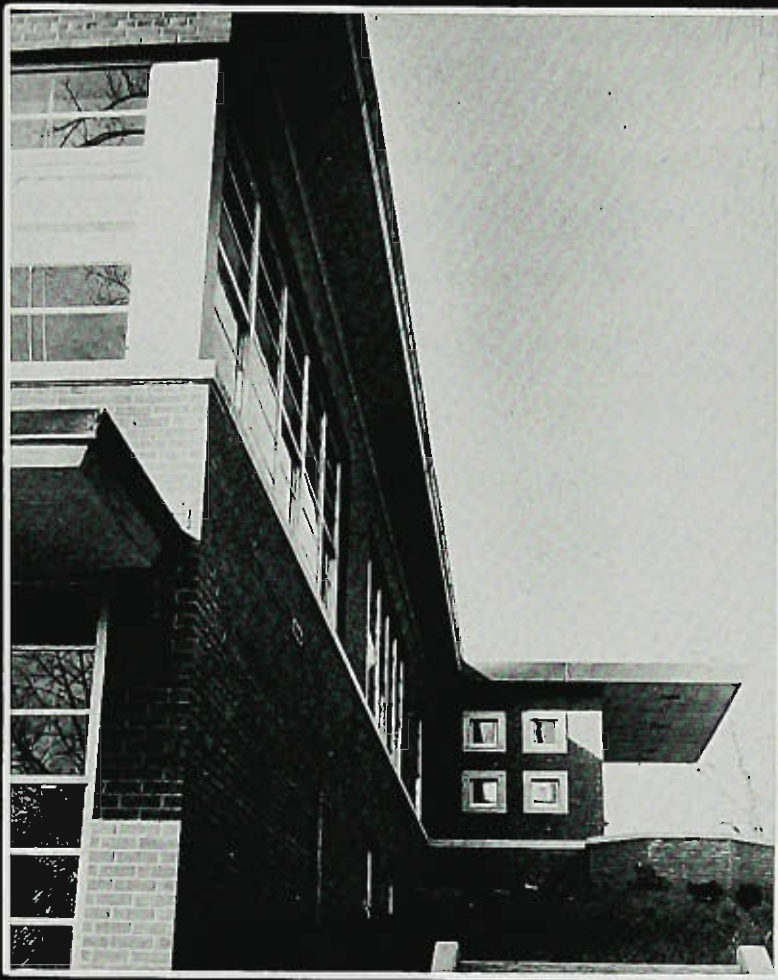
From the notoriety of presidential festivities
to the sobriety of educational administration

From the quartering of
servants to a place
of service



From the clatter of horses
hoofs to the rhythmic
beat of modern music

From the cultivation of
sunlit lawns to the pre-
paration for teaching
through knowledge



From the flight of the fleet-
footed deer to the fast
break of the flat-
footed five



DEDICATED TO



CHILDREN



It is very gratifying to go through four years of college knowing you have the constant guidance and inspiration of your faculty advisor. We, the senior class of 1956 have been fortunate in finding these and other fine qualities in Miss Ardell Elwell.

Ardell Elwell

You, the class of 1956, were the first to begin your four years of college education on this beautiful new campus in Haledon. The spaciousness, the variety, and the dignity of this new setting have had an effect upon all.

As your class advisor, I like to think of the word **CHANGE** as the keynote which can best describe your experiences and you, during these past four years. Indeed, there can be no education without change and during this process you have had struggles, personal, collegiate, and professional.

Through group participation and cooperation you have formulated plans and solved problems. With a keen sense of leadership and loyalty you have helped set fine traditions for those who follow. As you enter now this new phase of professional leadership, the knowledge, skills, and attitudes acquired at Paterson State Teachers College should form a firm foundation upon which to build.

To say farewell and best wishes does not suffice, so I say welcome to this profession of challenge and change which you and I have chosen.

Class Advisor

Walter Simon



Mr. Walter Simon, who holds the position of instructor of art at our college, has been appointed permanent yearbook advisor. We, the class of 1956, have been privileged in being the first class to produce a yearbook under his guidance. As we all know, undertaking this assignment is a long and tedious task. Mr. Simon has sacrificed many hours of his precious time plus his expert assistance and assurance in making our yearbook meet the qualifications of the class standards and desires.

We will always remember him, not only for his aid, but also for the sympathetic attitude

and understanding with which he has tactfully undertaken our problems. We shall never forget the warm-hearted manner he possessed as he helped us solve our problems and came to satisfactory conclusions.

As our yearbook advisor, Mr. Simon, became a very familiar person to our class. Through his considerate manner and friendly personality he has greatly inspired us and helped us to maintain the definite needs we desired. Our class realizes fully the obstacles Mr. Simon has had to encounter. How he conquered them, is the success of this yearbook.

Pioneer Advisor

Marion Emory Shea President



To my friends, the graduates of 1956

Tagore, the Hindu poet, once wrote: "We earn life when we give it away." Something of the spirit of this utterance evidences itself in the young man or woman who dedicates himself to teaching; for in choosing a service profession, the teacher has elected to spend himself in giving. The doing of more than is expected, the doing of good just for the sake of doing good without expecting any personal gain, the expenditure of time, money, and effort without the knowledge of others in the interest of the common good, the sharing of the world's wisdom with others, the outward pouring of idealism born of an inner directing force, the fulfillment of self in devoted service to children—these constitute the heritage and the responsibility of our profession.

To you, the Class of 1956, who in this volume dedicate yourselves to the children you will teach, is known the meaning of life—the real purpose of life. To some the ornamentations of life are important; to others, the meaning of life is obscure and uncertain. You who have chosen to identify yourself with the noble profession of teaching have found meaning and fulfillment of purpose in giving of yourselves. You are twice blessed.

I commend you for your wisdom and your vision. In trying to light the way for children, you become yourselves a guide and a star. May you be helped to find your own way, to see your goal more clearly, by lighting the way for those you love and serve.

Sincerely and gratefully yours,

Marion E. Shea
President

Two years ago, Dr. Marion E. Shea came to our campus to become the first woman president of a New Jersey State Teachers College. We are deeply honored to have such a charming and capable person to lead us along the paths toward our chosen profession.

She has helped prepare us for the great task that lies before us—enlighten the children by spreading truth and understanding. She has shared our hopes, and dreams and will always

be a part of our valuable memories of Paterson State.

We are deeply grateful for the help she has given us in our many undertakings, and we are indeed proud to have Dr. Shea as our president.

Upon graduation, we will look ahead to a bright future because of our president's guidance. Under such guidance, we have come to know her as "The First Lady of our College"

We are proud and privileged to have as our Chairman of Student Life such a man as Howard L. Haas. His years of conscientious endeavors and many devoted hours of service have earned him the gratitude of the student body.

It is often difficult to understand another's problems, but understanding and ability to cope with them are some of Mr. Haas' greatest assets. Interest in our welfare is foremost in his thoughts.

His friendly smile, his eagerness to help and his keen sense of humor, help to lighten our deepest burdens.

His unassuming manner, his enthusiasm, and never-failing interest in all of our activities have made us proud and grateful that Mr. Haas is one of us.



Mr. Haas



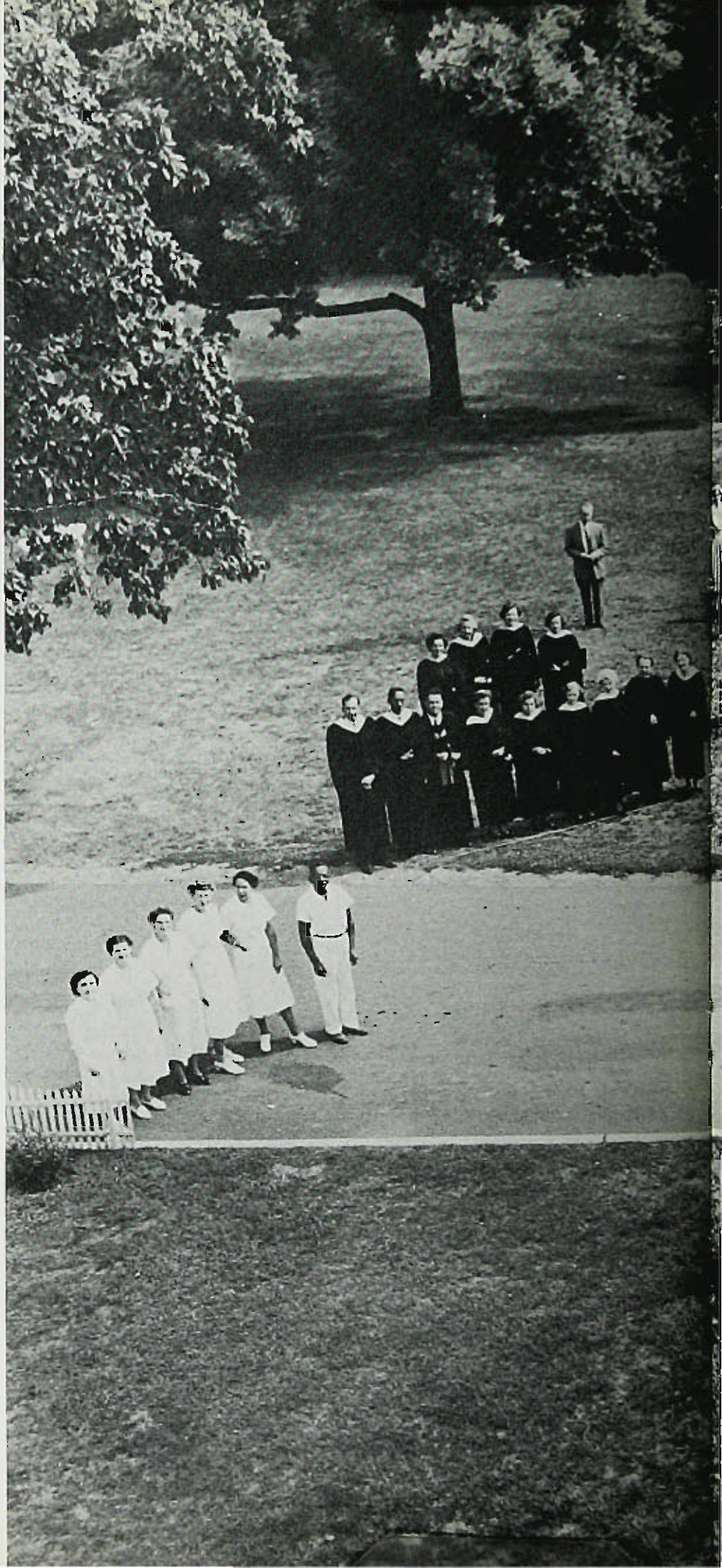
Dr. White.

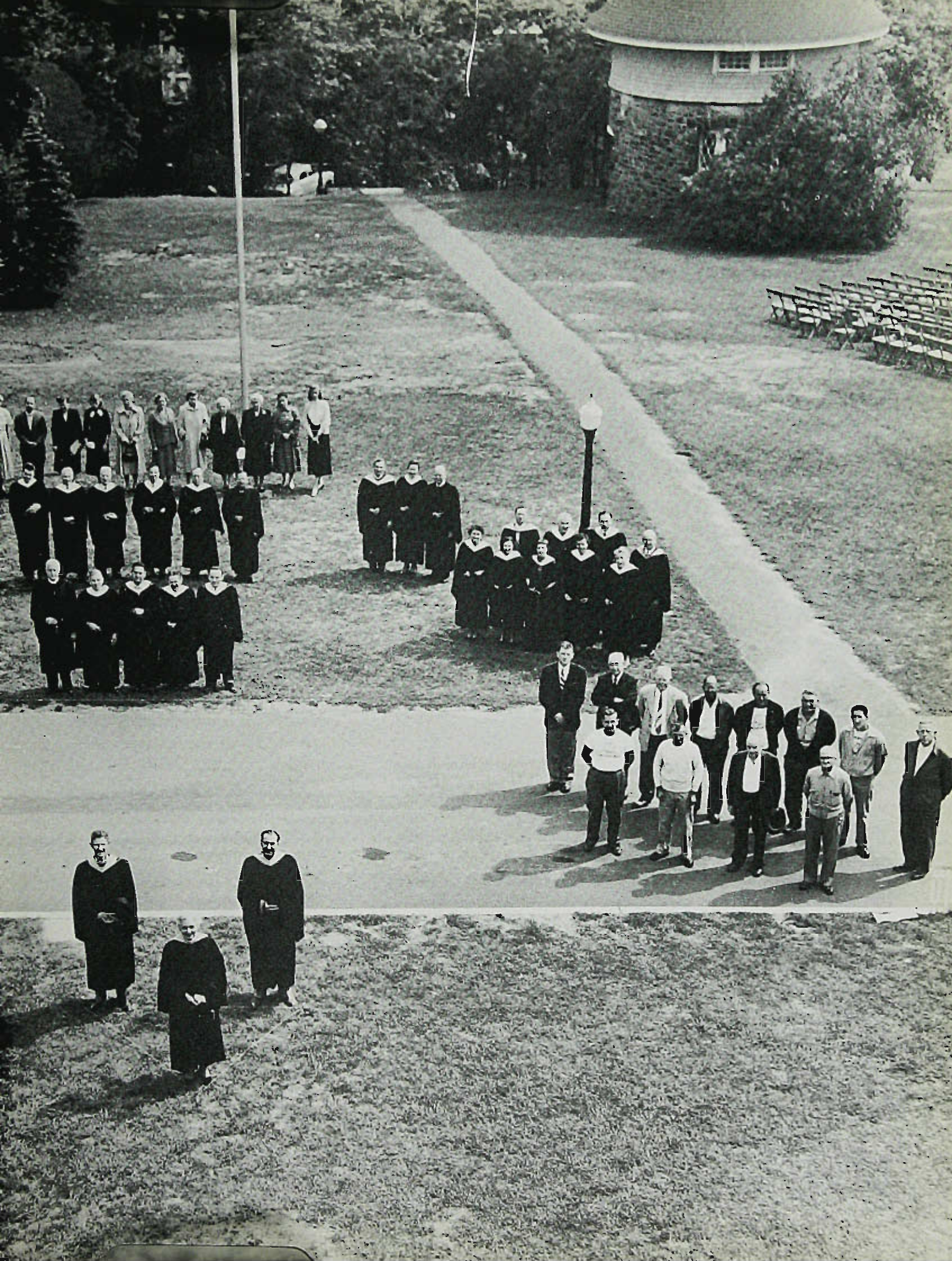
A teacher has a great responsibility in the training and guidance of the students which he has in his classes. Being Dean of Instructions at Paterson State, Dr. Kenneth B. White is in a key position in teacher education. The responsibilities and implications of his job are enormous as he deals with the future teachers of America who will eventually guide and train our youth.

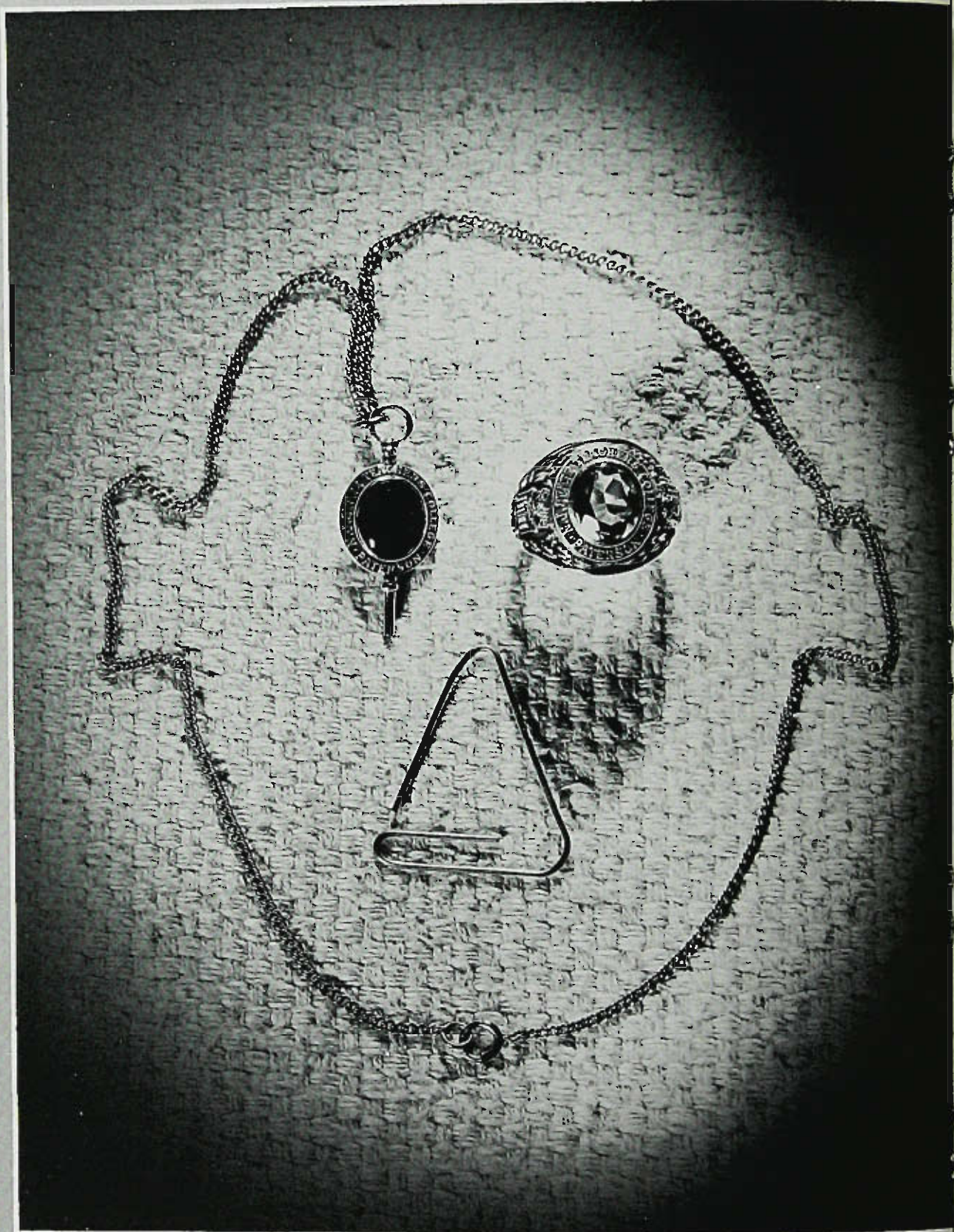
The future security and position of the United States among the nations of the world is secure as long as we have that breed of conscientious and capable educators which is exemplified in the person of Dr. White.

He is capably assisted in the performance of his duties by Miss Barbara VanderKraats who helps him carry out his work smoothly and efficiently.

F
A
C
U
L
T
Y
a n d
S
T
A
F
F







SENIORS



Mary Ackerman

"Mar"

Business Education

Debits and Credits 1-4; E.B.T.A. 1-4; N.J.B.E.A. 1-4; U.B.E.A. 1-4; Outdoor Education Club 1-2; Secretary 2; W.A.A. 2-3; Phi Theta Chi Sorority 2-4; BEACON 3-4; Business Manager 3, Assistant Editor 4; De La Salle 3-4; President 4; Hospitality Committee 3-4; PIONEER 4.

Geraldine Abruscato

"Gerry"

Kindergarten-Primary

State Square Set 1; Phi Theta Chi Sorority 2-4; President 4; Girls Chorus 2; BEACON 3; F.T.A. 4; Hospitality Committee 4.



Agnes J. Albinson

General Elementary

Transfer from University of Oklahoma.



*Important Sophs, tote those books, trip to Valley Forge –
what misery.....*

Alice Haskin Barton

General Elementary

F.T.A. 1-4; Hospitality Committee 2-4;
Palateers 3-4.

SPECIAL AWARDS

Koppa Delta Pi 3-4; Who's Who in American
Colleges and Universities.



Lois S. Almquist

General Elementary



David Alexander

"Dave"

General Elementary

M. C. of All College Revue 3; Bowling
Team 2-4; M. A. A. 2-4; Social Com-
mittee 3; Ping Pong 2-4.

Beverly Ruth Bober

"BeBe"

Business Education

Debits and Credits 1-4; All College Revue 2; Outdoor Education Club 2; N.J.B.E.A. 2-4; BEACON 3.



Phyllis Berman

General Elementary

Transfer from Douglass College, N. J.



Helen Rose Bennett

"Hel"

General Elementary

F.T.A. 1-4; W.A.A. 1-4, Secretary 3-4; Girls Chorus 2; All College Revue 2-3; S.G.A. 3-4; Citizenship Club 4; Class Secretary 4; Hospitality Committee 4; Phi Omega Psi Sorority 4; Assistant Editor, PIONEER 4.

SPECIAL AWARDS

Who's Who in American Colleges and Universities.

*The beginning of Shorthand – our Waterloo, trips to the G. A. –
crazy piano player*



**Joan Casagrande
Bosland**

General Elementary
F.T.A. 4; Palateers 4; W.A.A. 4.



Betty Brent

General Elementary
Transfer from Texas Technological
College.

Joyce Brookman

"Lulu"
General Elementary
Transfer from Columbia University, New
York. F.T.A. 3-4; Palateers 3-4; W.A.A.
3-4; BEACON 4.

SPECIAL AWARDS
Dean's List.



*Stanaslotski, Bosankomakowitz, and Jones,
jugs on the field trips, eh!...*

Penmanship Clinic, who'll be chairman of St. Paddy's Day Dance?
— fish nets on the ceiling —



Barbara M. Brophy

"Barb"
Kindergarten-Primary
Transfer from Trenton State Teachers
College, N. J.

Rocita Brown

"Marie"
General Elementary
W.A.A. 1; F.T.A. 3-4; Palateers 4; Inter-
Varsity Christian Fellowship 4.



Bridget Caronia

General Elementary
Outdoor Education Club 1-4; Treasurer
1; Masque and Masquers 1-4; Secretary
3; State Square Set 1-4; S.G.A. 1; Phi
Theta Chi Sorority 2-4; Treasurer 3; Citi-
zenship Club 2; Girls Chorus 2; Publicity
Chairman, All College Revue 2; Social
Committee 3.



Our own Campus Queen, Easter trips to Florida..... Mi

Judith Brooks Chesler

General Elementary
Transfer from Boston University,
Boston, Mass.



Thelma Casaleggio

Kindergarten-Primary
Theta Delta Rho Sorarity 3-4.



**Dorothy Eleanor Smith
Carroll**

General Elementary
Transfer from Salem Teachers College,
Salem, Mass. F.T.A. 4.

Angela Alegria Conti

Kindergarten-Primary

BEACON 1-4; Phi Theta Chi Sorority 2-4;
Hospitality Committee 2-4; FLASHLIGHT
3; S.G.A. 3; F.T.A. 4; PIONEER 4.

SPECIAL AWARDS

Beacon Gold Key, Dean's List.



Marilyn Conlon

General Elementary

F.T.A. 1-4; Paleteers 4; W.A.A. 4.

SPECIAL AWARDS

Dean's List.



Janet Ann Christie

"Jan"

General Elementary

W.A.A. 1, 3; F.T.A. 2-4; Campus Queen
Committee 2; Masque and Masquers 2;
Citizenship Club 3-4; All College Revue
3; Junior Prom Committee 3; PIONEER 4.

SPECIAL AWARDS

Dean's List.

Come into my office for your papers, Miami Beach Vagabond Club



Ruth Grand Corn

General Elementary

FLASHLIGHT 2-3; All College Revue 3;
Make-up Editor, PIONEER 4.



Anne Cupito

"Annie"

Business Education

BEACON 1-4, Feature Editor 3; Debits and Credits 1-4; Corresponding Sec. 3; E.B.T.A. 1-4; N.J.B.E.A. 1-4; U.B.E.A. 1-4; F.T.A. 1; Masque and Masquers 2; Outdoor Education Club 2; W.A.A. 2-3; All College Revue 3; Hospitality Committee 3-4; Publicity Committee 4; Co-Typing Editor, PIONEER 4.

SPECIAL AWARDS

Beacon Gold Key, Dean's List.

Jane Dardia

"Janie"

Business Education

Swords Club 1-4; President 4; Fencing Team 1-4; Captain 4; Cheerleaders 1-3, Captain 3; Student Co-op 1-4; Vice Pres. 2-3; Debits and Credits 1-4, Member-At-Large 4; All College Revue 2; N.J.B.E.A. 2-4; Hospitality Committee 4; E.B.T.A. 2-3.

SPECIAL AWARDS

Pi Omega Pi 2-4; Kappa Delta, Pi 3-4;
Dean's List.



Never to be forgotten times at the Sweetheart Dance... oh well...

Foundations of Education, what's that? Down with Dewey...hub!



Joan Dembek

Kindergarten-Primary

Outdoor Education Club 1-2; State
Square Set 1-2; Theta Delta Rho Sorority
4; W.A.A. 4.

Audrey R. Debens

General Elementary

Phi Omega Psi Sorority 1; W.A.A. 1;
F.T.A. 4.



Carol Anne Dioszeghy

General Elementary

Transfer from Bob Jones University, S. C.
F.T.A. 2-4, Treas. 2, Vice Pres. 3; Hospi-
tality Committee 3-4; Inter-Varsity Chris-
tian Fellowship 3-4.



Who wrote the sillybus and gave the fly swatter as Christmas gifts?

Anne Christine Evans

General Elementary

Transfer from Marymount College, N. Y.

SPECIAL AWARDS

Dean's List.



Barbara Dorl

"Barb"

General Elementary

Queen of the Campus 1954; Cheerleading 1-3; Co-Captain 3; State Square Set 1; Hospitality Committee 4.



Phyllis Dizzia

"Phyl"

General Elementary

W.A.A. 1; F.T.A. 2-4; Citizenship Club 4; Hospitality Committee 4; PIONEER 4.

Marvon Farley

Kindergarten-Primary

BEACON 1-4; Girls Chorus 1-3; Theta Delta Rho Sorority 2-4, Corresponding Secretary 3, Vice President 4; Pro Kans 2, F.T.A. 3-4.



Margaret Anne Faltings

"Marge"

Kindergarten-Primary

S.G.A. 1; BEACON 1-4; Girls Chorus 1-3; Student Co-op 1-4; Theta Delta Rho Sorority 1-4; Corresponding Secretary 2, Vice Pres. 3, Pres. 4; Pro Kans 2; F.T.A. 2-4; Class Treasurer 2; Junior Prom Chairman 3.

SPECIAL AWARDS

Kappa Delta Pi 3-4, Tres. 4; Beacon Gold Key; Dean's List.



Valerie Louise Fairchild

"Val"

Kindergarten-Primary

Phi Theta Chi Sorority 2-4; BEACON 3; F.T.A. 4; Hospitality Committee 4; PIONEER 4.



Crazy Juniors, "when I was out in Practicum," never even see the bus. eds.....



Mariann Fial

Kindergarten-Primary

State Square Set 1-2; Girls Chorus 2;
Phi Theta Chi Sorority 2-4; Secretary 3;
F.T.A. 4.



Eugene H. Fichter

"Gene"
General Elementary

Transfer from Seton Hall University, N. J.
College Band 2-4; Director, All College
Revue 3; Delta Omega Epsilon Fraternity
3-4.

Frank Fred Fincken, Jr.

"Swish"
General Elementary

Baseball 1-2; State Square Set 1-2;
M.A.A. 1-4; Bowling 2-4; Delta Omega
Epsilon Fraternity 2-4.



*How do we fit the individual needs? Who's Herbert?
and then*

Case study, sociograms, term papers not too much work.....



Gerald Gelfand

"Gerry"
General Elementary

Advertising Editor, BEACON 3; Social
Chairman 3; Co-Business Chairman, All
College, Revue 3; Delta Omega Epsilon
Fraternity 3-4; M.A.A. 3-4.

SPECIAL AWARDS
Dean's List.

Rosemarie Gilbert

"Marie"
General Elementary

Palateers 2-4; Inter-Varsity Christian Fel-
lowship 1-4; F.T.A. 3-4; Citizenship Club
3-4; BEACON 4.



Paula Gold

General Elementary

F.T.A. 3-4; Palateers 4; Theta Delta Rho
Sorority 4; PIONEER 4.



Got writers cramp, efficient juniors do it again, how?

Lili M. Holloway

"Tro"

Business Education

Transfer from Moravian College, Penn.
Debits and Credits 2-4; E.B.T.A. 2-3;
N.J.B.E.A. 2-3; Hospitality Committee 2-
4; Modern Dance 3-4; All College Revue
3; PIONEER 4.



Barbara O'brig Hennig

"Barb"

General Elementary

W.A.A. 1-4; F.T.A. 1-4; Girls Chorus 2;
Junior Prom Committee 3; Citizenship
Club 4; Hospitality Committee 4; PIO-
NEER 4.



Dena Guttman

General Elementary

BEACON 1-2; Class Vice Pres. 2.

Ethel Marie Ingram

General Elementary

Transfer from Bergen Junior College, N. J. W.A.A. 1-4; F.T.A. 2-4; Hospitality Committee 2-4; Girls Chorus 2; Palateers 3-4.



Sylvia Hymson

General Elementary

F.T.A. 2-4; Citizenship Club 4; Hospitality Committee 4; PIONEER 4.



Jack Hulbert

Business Education

Debits and Credits 1-4; E.B.T.A. 2-4; N.J.B.E.A. 2-4; S.G.A. 3; U.B.E.A. 4.

SPECIAL AWARDS

Pi Omega Pi 2-4; Kappa Delta Pi 3-4; Dean's List.

Junior Prom, out of state at Hotel Statler, thats too far



Audrey Judlow

Kindergarten-Primary

BEACON 1; State Square Set 1; Wightman Debating Club 2; PIONEER 4.



Barbara Katz

"Bobbie"

General Elementary

All College Revue 2, 3; F.T.A. 4.

Carole Kennelly

General Elementary

State Square Set 1; Phi Theta Chi Sorority 3, 4; Masque and Masquers 4; F.T.A. 4; Hospitality Committee 4.



Out of the hole, good support, big success, what a time — —

No field trips, what a shame, il n'y a pas.....



**Patricia Lucinda
Krzeminski**

"Pat"

Kindergarten-Primary

BEACON 1-4; Fencing Club 1-4; Hospitality Committee 1-4; State Square Set 1-2; Phi Theta Chi Sorority 2-4; Secretary 2, President 3; FLASHLIGHT, Editor 2-3; Girls Chorus 2; S.G.A. 2; F.T.A. 4; PIONEER 4.

Barbara Lois Laizure

"Bobbie"

Kindergarten-Primary

State Square Set 1; W.A.A. 1; Girls Chorus 1-2; S.G.A. 4.



Donna Lamela

General Elementary

Gamma Phi Lambda Sorority 2-4; W.A.A. 1-4; F.T.A. 3-4.



All College Revue, late hours, much practice, well worth it.

Robert R. Longcore

"Bob"

General Elementary

Palateers 1; Student Co-op 1; S.G.A. 1;
International Relations Club 1-2.



Dolores Frank Lillo

"Dorie"

General Elementary

BEACON 1-3; State Square Set 1; Hospitality Committee 4.



Barbara Kantrowitz Leff

"Barb"

General Elementary

W.A.A. 1; F.T.A. 4; Hospitality Committee 4.

Donald R. Maloney

"Don"

General Elementary

Transfer from Worcester State Teachers College, Mass. Geography Club 2; S.G.A. 2-4; Skull and Poniard Fraternity 2-4; Secretary 2, Treasurer 3, President 4; Class President-elect 3; Student Co-op 3; Masque and Masquers 3 Senior Ball Committee 3; Class President 4; Hospitality Committee 4.

SPECIAL AWARDS

Who's Who in American Colleges and Universities.



Marilyn MacGill

"Mac"

Kindergarten-Primary

Girls Chorus 1-3; F.T.A. 2-4; Theta Delta Rho Sorority 3-4.

SPECIAL AWARDS

Kappa Delta Pi 4; Deon's List.



Iris Jane Lynch

"I"

General Elementary

W.A.A. 1-4; Masque and Masquers 1; Junior Prom Committee 3; Citizenship Club 3-4; F.T.A. 3-4; All College Revue 3; Hospitality Committee 4; PIONEER 4.

*Many changes in status after summer vacation,
who's feet can't touch the floor?*



Margaret McGuinness

"Peggy"

General Elementary

Modern Dance Club 2-3; All College Revue 2-3; S.G.A. 1.



Carl Mege

"Bucky"

General Elementary

Basketball 1-4; State Square Set 1-2; Student Faculty Relations Committee 1; Baseball 2-4; Delta Omega Epsilon Fraternity, Treasurer 2-4; Hospitality Committee 2-4; Class Vice President 4.

Vincent Meyers

"Vince"

Business Education

BEACON 1-4; Sports Editor 2, Editor in Chief 3; S.G.A. 1, 3, 4; Debits and Credits 1-4; Hospitality Committee 2-4; Fencing 1-2; State Square Set 1-4; Varsity Club 2; N.J.B.E.A. 3; All College Revue 3; Delta Omega Epsilon Fraternity 1-4; Secretary 2, Vice President 3, President 4; STIRC Leadership Conference Delegate 3-4; Editor in Chief PIONEER 4; Chairman, Freshmen Initiation Committee 2.

SPECIAL AWARDS

Beacon Gold Key, Dean's List.



Piano – playing K. P's. they have their troubles

*Broken finger nails, many Liberace's, election posters,
indiscreet places.....*



Jean Moreck

"Chick"

Kindergarten-Primary

Fencing Team 1-4; Captain 3; Swords
Club 1-4; State Square Set 1; Phi Theta
Chi Sorority 2-4; All College Revue 2;
S.G.A. 3.

Edelyn Moriarty

"Lynn"

General Elementary

Fencing 1; W.A.A. 2; F.T.A. 4.



Mary Ann Nebiker

Kindergarten-Primary

Fencing 1-4; State Square Set 1-2; Phi
Theta Chi Sorority 2-4; FLASHLIGHT 2-3;
Girls Chorus 2; F.T.A. 4.



We've won, oh joy, wait 'til next year.....we did.....so

Grace Parkin

General Elementary

A Cappella Choir 1; Palateers 1-4; F.T.A. 2-4.

SPECIAL AWARDS
Dean's List.



Elaine Pantel

General Elementary

BEACON 1-4; Assistant Editor 3; Madrigals 1-2; Masque and Masquers 1; Phi Theta Chi Sorority 2-3, President 2, Chaplain 3; W.A.A. 2; Citizenship Club 2; Chairman, All College Revue 2; Social Committee 2; Class Secretary 2; Cheerleader 3-4; Junior Prom Committee 3; Assembly Committee 3; PIONEER 4.

SPECIAL AWARDS
Who's Who in American Colleges and Universities.



Patricia Ann Niewarowski

"Pat"

General Elementary

W.A.A. 1-3; Chairman, Campus Queen Committee 2; Freshmen Initiation Committee 2; Citizenship Club 2-4; F.T.A. 2-4; Secretary 3; All College Revue 3; Junior Prom Committee 3; Hospitality Committee 4; PIONEER 4.

SPECIAL AWARDS
Dean's List.

Gail Pinkus

General Elementary

F.T.A. 1; State Square Set 2; Outdoor Education Club 3; Phi Theta Chi Sorority 3.

SPECIAL AWARDS

Kappa Delta Pi 4.



Richard Perna

"Rich"

General Elementary

Whitman Debating Society 1-2; Judo Club 1; BEACON 1; Outdoor Education Club 2; S.G.A. 2, 3; Citizenship Club 3, 4; Treasurer 3, Vice-President 4; Delta Omega Epsilon Fraternity 3, 4; Art Editor, PIONEER 4.



Lillian Percarpio

"Lil"

General Elementary

F. T. A. 1-4; Social Committee 1-3; Theta Delta Rho Sorority 3, 4; Citizenship Club 3; Geography Club 3.

Superior Seniors, S. U. B. invasion, four subjects, but.....



June Brown Pitts

Business Education

Hospitality Committee 1-4; Debits and Credits 2-4; Class Treasurer 3; E.B.T.A. 4; N.J.B.E.A. 4; PIONEER 4.



Joan Clare Pizzale

"Jaanie"

Business Education

Debits and Credits 1-4; W.A.A. 1-3; FLASHLIGHT 2-4; All College Revue 2; Citizenship Club 2; Phi Theta Chi Sorority 2-4; Vice-President 2; BEACON 3-4; Hospitality Committee 3; Outdoor Education Club 2; State Square Set 1; E.B.T.A. 1-3; N.J.B.E.A. 1-4; PIONEER, Co-Typing Editor 4.

Mary E. Polglaze

General Elementary

F.T.A. 1-4; Geography Club 1-3, Secretary 2, Vice-President 3; Hospitality Committee 2-4.



three hours between classes, Odelesque and American Patrol time.....

*do you think we'll go to Washington? 86 seniors needed,
never happen.....*



Shirley Arlene Preston

"Shirl"

Kindergarten-Primary

BEACON 1-4; College Health Committee 1-3; Class Vice-President 1; State Square Set 1; Hospitality Committee 2-4; STIRC Delegate to Leadership Conference 2-4; Phi Theta Chi Sorority 2-4; Chaplain 2; All College Revue 2-3; Eastern State Conference Delegate 2-3; S.G.A. 3, Secretary 2, Treasurer 3; Pro Kons 1-2; Photography Editor, PIONEER 4.

SPECIAL AWARDS

Dean's List; Beacon Gold Key; Who's Who in American Colleges and Universities; Kappa Delta Pi 3-4.

Adam Richberg Jr.

"Rich"

General Elementary

M.A.A. 2-4; All College Revue 2-3; Class President 3; S.G.A. 4, Vice-President 4.

SPECIAL AWARDS

Who's Who in American Colleges and Universities.



Barbara Ann Riegler

"Bobbie"

General Elementary

F.T.A. 1-4; President 2; Masque and Masquers 1-4, President 2; Geography Club 1; Hospitality Committee 2-4; Theta Delta Rho Sorority 3-4; Social Committee Chairman 3; PIONEER 4.

SPECIAL AWARDS

Who's Who in American Colleges and Universities.



it didn't, boat trip around Manhattan Island, Wednesday's a heavy day.....

Margaret Ryan

"Marge"

General Elementary

W.A.A. 1-4, President 3, Vice President 2; Phi Omega Psi Sorority 1-4, President 2; De La Salle 1-3, Treasurer 2; S.G.A. 2-4; PIONEER Sports Editor 4; BEACON 3; Student Faculty Relations Committee 3; All College Review 2-3; Hospitality Committee 4; Senior Ball Committee 4; STIRC Leadership Conference 3.

SPECIAL AWARDS

Who's Who in American Colleges and Universities.

Not
Pictured



Rudolph Rotella

"Rudy"

General Elementary

S.G.A. 1; Citizenship Club 1-2; Outdoor Education Club 1-4; Band 2-3; Class President 2; Delta Omega Epsilon Fraternity 3, President.

SPECIAL AWARDS

Kappa Delta Pi.



Edith Schaffer Robbins

"Edie"

General Elementary

Lois Doherty Schmidt

"Lo"

General Elementary

Girls Chorus 2; Masque and Masquers 2; W.A.A. 2; Senior Ball Committee 2-3; Citizenship Club 2-4; F.T.A. 2-4; Hospitality Committee 2-4; All College Revue 3; Geography Club 3; PIONEER 4.



Lorraine Alice Schoeffel

"Lorrie"

General Elementary

Phi Omega Psi Sorority 2-4; F.T.A. 4.



Phyllis Lamanna Sardoní

"Phyl"

General Elementary

Mixed Chorus 1-2; W.A.A. 1-2; Campus Queen Committee 2; Masque and Masquers 2; F.T.A. 2-4; All College Revue 3; Junior Prom Committee 3; Social Committee 3; Citizenship Club 3-4; Hospitality Committee 4; S.G.A. 4; PIONEER, Literary Editor 4.



Meeting at my house, get up from under the table, pile 'em up on the floor....



Joan Simonetti

Kindergarten-Primary

Transfer from St. Joseph's College for Women, Brooklyn, New York. Outdoor Education Club 2; Theta Delta Rho Sorority 4; W.A.A. 4.



Joan B. Slaff

General Elementary

Transfer from Fairleigh Dickenson College, N. J. 1; F.T.A. 4; Hospitality Committee 4.

Robert Adrian Sloate

"Bob"

General Elementary

Choral Group 1-2; Hospitality Committee 2-4; M.A.A. 3; Fish Committee 4.



Who's Mister Wuz, many fancy signs featured in Senior parking lot.....

*aren't we talented, who's booby?....and then a great
catastrophe.....*



Rebecca J. Smith

"Becky"
General Elementary
Citizenship Club 2; F.T.A. 4.

Janet Grace Smyth

"Jan"
General Elementary

Phi Omega Psi Sorority 1-4; All College
Revue 3; Junior Prom Committee 3;
Senior Ball Committee 3; Citizenship Club
3-4; F.T.A. 3-4; Hospitality Committee 4;
PIONEER 4.



Lewie B. Stanaland

"L.B."
General Elementary

Geography Club 1; Masque and Mas-
quers 1; S.G.A. 1-4; All College Revue
2; Class President 2; Citizenship Club 2;
Delegate to Eastern States Conference
2-3; STIRC Delegate 2-3; Hospitality Cam-
mittee 2-4; S.G.A. President 3; Student
Corporation 3.

SPECIAL AWARDS

Who's Who in American Colleges and
Universities; Dean's List.



someone closed the S. U. B.,.....but not for long.....

Evelyn G. Szilagyi

General Elementary

Masque and Masquers 1; W.A.A. 1; Citizenship Club 2-4; Phi Omega Psi Sorority 2; Corresponding Secretary 3, Treasurer 4; All College Revue 3; F.T.A. 3-4; Hospitality Committee 4; PIONEER 4.



Anne Palmer Sugalski

General Elementary

Transfer from Fairleigh Dickenson College.



Barbara Ann Staudinger

"Barb"

General Elementary

Phi Omega Psi Sorority 1-4, President 3; Citizenship Club 1-3; W.A.A. 1-2; F.T.A. 3-4; Geography Club 3.

Patricia Van Horn

"Pat"

General Elementary

Outdoor Education Club 1-3; President 4;
State Square Set 1-4; F.T.A. 1; Phi Theta
Chi Sorority 2-4; Citizenship Club 2-3;
PIONEER 4; Class Treasurer 4.

SPECIAL AWARDS

Kappa Delta Pi 3-4; Dean's List.



George R. Unger

General Elementary

Judo Club 2; Bond 4.



Charles Traetto

General Elementary

Band 2-4.

*when are you getting married? graduation June 14,
much too late....*



Joseph Michael Waldman

"Joe"
Business Education

State Square Set 1-4; President 2; Fencing 1-4; Basketball 2, 3; Hospitality Committee 2-4; Baseball 2; M.A.A. 2, 3; All College Revue 2, 3; Debits and Credits 2-4; S.G.A. 4; Sports Editor, PIONEER 4.

SPECIAL AWARDS
Kappa Delta Pi 3, 4; Pi Omega Pi 4; Who's Who in American Colleges and Universities; Dean's List.



Jane Marie Walsh

"Jayne"
Business Education

BEACON 1-4; Debits and Credits 1-4; N.J.B.E.A. 4; Hospitality Committee 2-3; E.B.T.A. 2-4; All College Revue 2, 3; Campus Queen Committee 2; Social Committee 2; Class Secretary 3; Junior Prom Committee 3; Assembly Committee 3; S.G.A. 4; UBEA 4; Business Manager, PIONEER 4.

SPECIAL AWARDS
Beacon Gold Key.

Bobbie Jean Wilson

"Bob"
General Elementary

State Square Set 1-4; Outdoor Education Club 1-3; Theta Delta Rho 4.



ah woony koony ki ah awoony what?
Practice teaching assignments listed on bulletin board.....

I'm petrified...it's all over now...I hate to come back...it'll be over soon.....



Joyce Winter

Kindergarten-Primary

Outdoor Education Club 1-2; Hospitality Committee 2-4; Theta Delta Rho Sorority 4; W.A.A. 4.

Ellen Wood

Kindergarten-Primary

Girls Chorus 1-3; Band 1-3; F.T.A. 4; Theta Delta Rho Sorority 3-4.



Barbara Tucker Westbrock

"Bobbie"

Business Education

Debits and Credits 1-4; N.J.B.E.A. 1-4; E.B.T.A. 4; W.A.A. 2-3; De La Salle 3-4; Hospitality Committee 3-4; BEACON 3-4; PIONEER 4.

SPECIAL AWARDS

Pi Omega Pi 2-4; Kappa Delta Pi 3-4; Dean's List.



*Let's have many reunions, every year? we hope to remain close,
we will.....*

Lucy Zonca

"Lu"

Business Education

Debits and Credits 1-4; N.J.B.E.A. 1-4;
Outdoor Education Club 1-4; State Square
Set 1-2; F.T.A. 1; Assembly Committee 1;
Phi Theta Chi Sorority 2-4; Historion 2;
BEACON 3; Citizenship Club 3; E.B.T.A.
4; PIONEER 4.



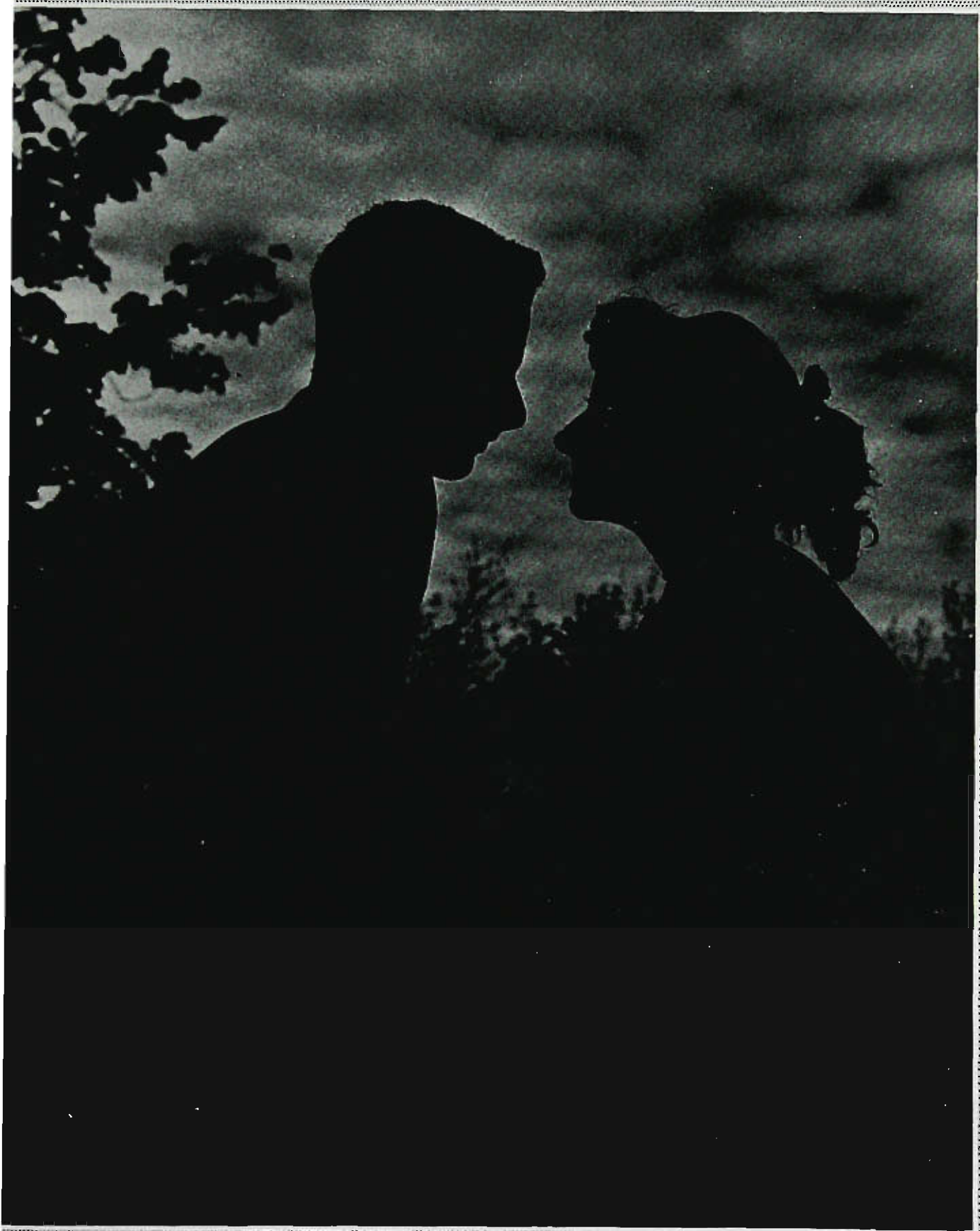
Jeane Zanon

General Elementary

State Square Set 1-4; Outdoor Education
Club 1-4; Treasurer 2; Citizenship Club
1-3; Secretary 3; Phi Theta Chi Sorority
2-4; F.T.A. 1.

As we look back on our four years at Paterson State, we recall all the memorable events that have occurred. Field trips, proms, school dances, basketball games and all the other extra-curricular activities that have meant more to us than can be imagined. We shall ever be grateful to State for giving us the opportunity for making life-long friendships. In this day and age, people are prone to be a little over-independent. We, however, have been made to feel that we should not isolate ourselves from the group. Each and everyone of us can truthfully say that we have been a closely knit unit in the past four years. Naturally, some difficult situations have arisen in the past, but we have always managed to overcome these and have emerged with the feeling of oneness.

There is, actually, very little the Seniors can say except that we hope every student at Paterson State will develop the close feeling that, we, the Class of 1956, have experienced.





GUEST



DAY

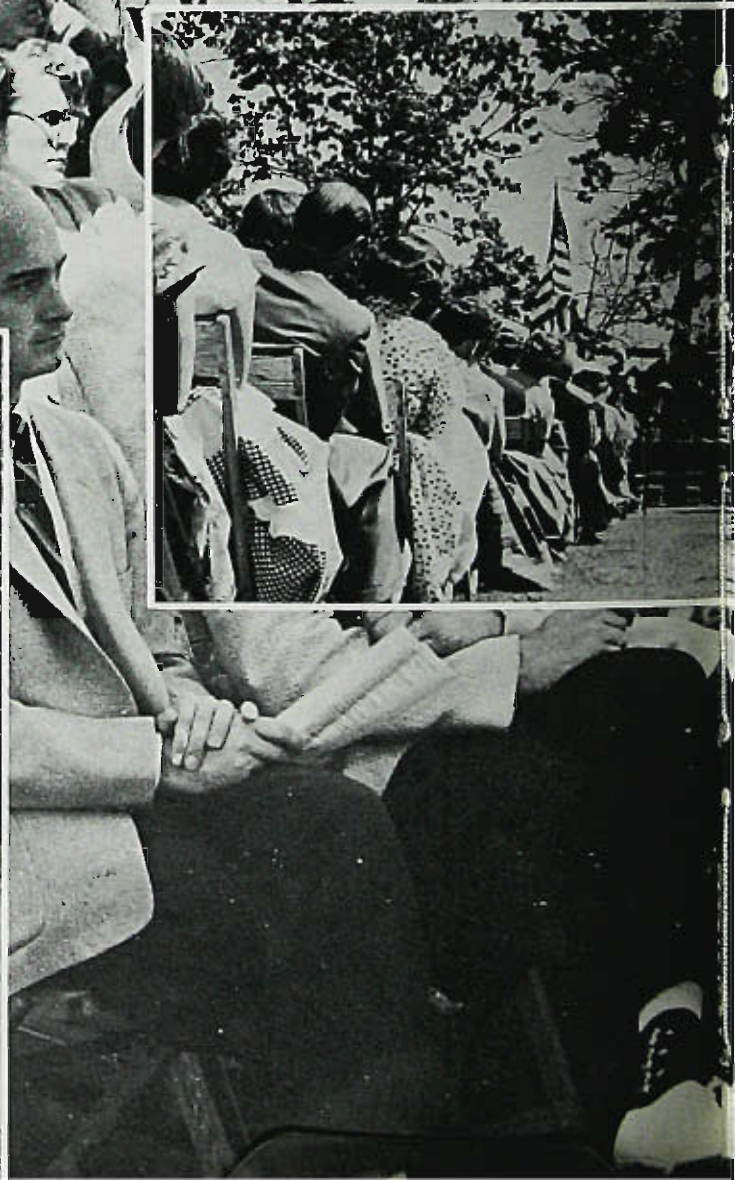


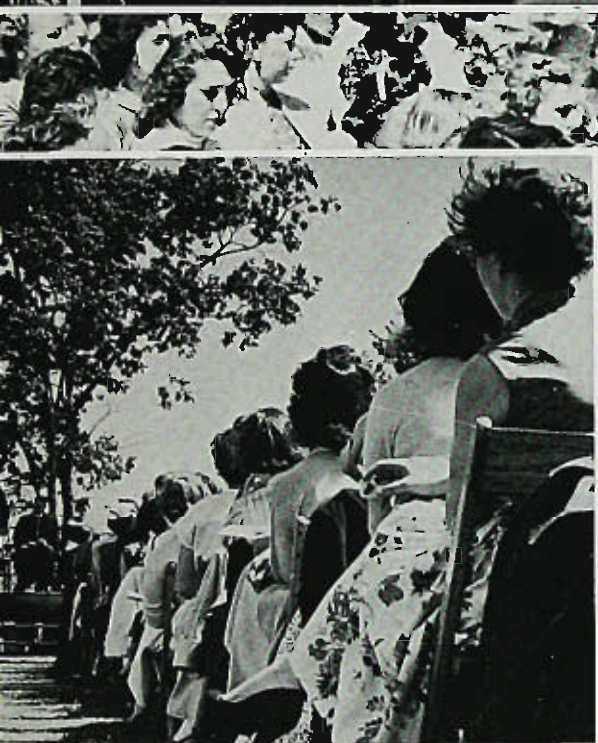




Inauguration of our President

Marion Emory Shea







C
O
L
L
E
G
E

A
L
L

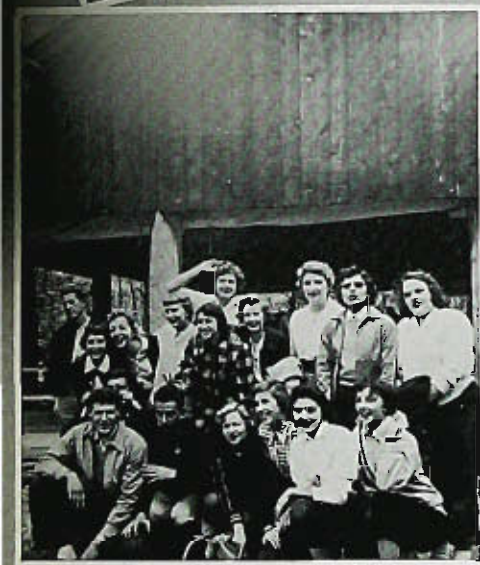




R E V U E











ACTIV

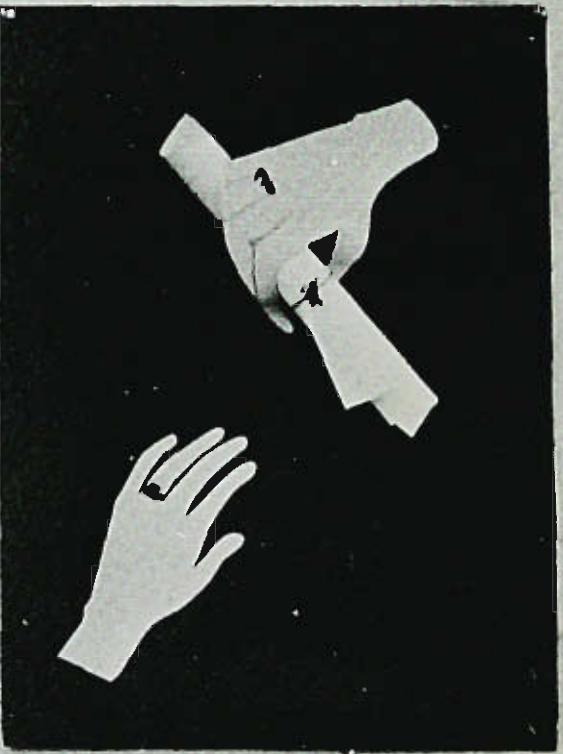
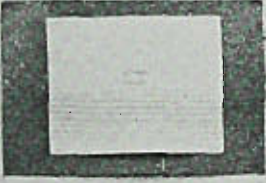


The Home of the Future
By [illegible]
Published by [illegible]
1934

Senior
Field Trip
October 19
Circle Line Tour
Manhattan
Leave 8:30
Return 2:00
How about a
Swarm Lunch?

S.H.

Join
Citizenship
Club



ITIES



Editorial Staff

The Paterson State

Beacon



Assignments go out



Acceptance is quick



Soon into the box



All for this!
Flashlight



Student Government Association



Executive Committee



Democracy in Action



S. G. A. Representatives



Reading The Minutes

KAPPA DELTA PI



PI OMEGA PI



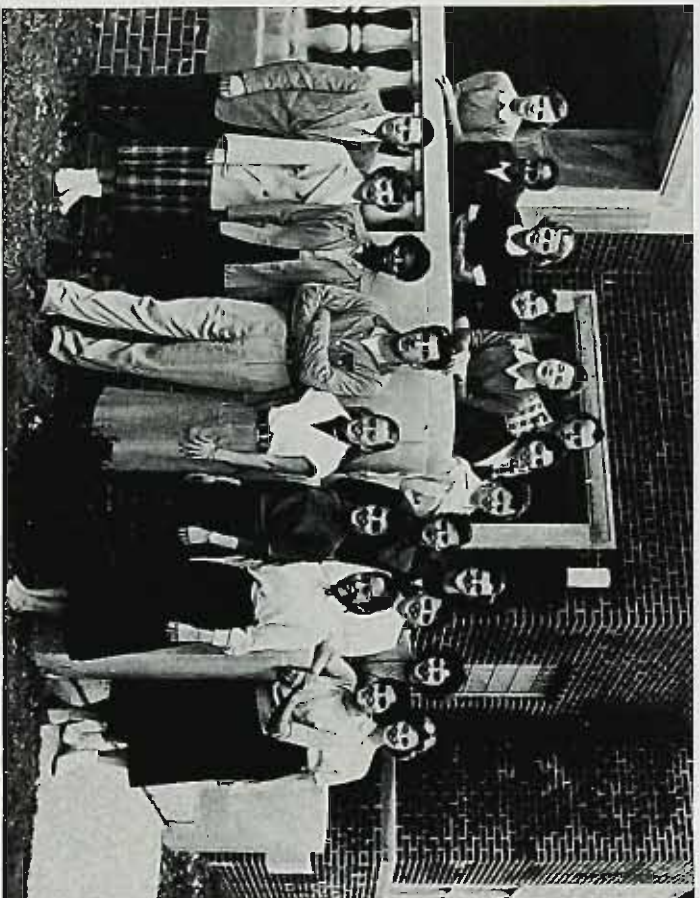
MASQUE and

MASQUERS





Future Teachers
of America



Citizenship Club

Pro - Kons



Debits and Credits



Palateers



Choir



OUTDOOR EDUCATION CLUB



CLUBS ARE ACTIVE

Club activities play a very important part in college life. Proof of this is that a vast number have been chartered by the Student Government Association this past school year. Each organization has a faculty member to advise them and a vote in the S.G.A., and funds are distributed semi-annually to carryout the club programs.

We are proud of the high social, moral, intellectual, and aesthetic values maintained by the various organizations.

Each meeting exemplifies parliamentary procedure, democratic way of life, sportsmanlike conduct and clean and healthful living.

The clubs provide challenges in the field of intellectual achievement and give opportunity for members to progress rungs higher on the ladder of success.

Through their functions, the groups aim to develop within us an appreciation for the aesthetic values such as art, music, and literature, which one cultivates for a full, well-rounded life.

We shall always remember the many friendships which we made during our four years through participation in the various club activities. The spirit of cooperation and good fellowship has always existed.

Many of the activities we have initiated have become traditional and we know they will continue to live in years to come.

The friendly attitude of all members created a pleasant working atmosphere. The friendships that have been built shall always last long after we have been graduated.

Through competition, participation and cooperation with different communities, other schools, and civic organizations, our club programs have widened and P.S.T.C. has gained recognition outside our campus.

Competition has always been carried on in a sportsmanlike manner for we have lived up to this motto, "It matters not, whether you win or lose, but how you play the game". Through participation in conferences and other activities, we have shared our ideas and benefited by the ideas of others.

WOMEN'S



ATHLETIC

MEN'S



ASSOCIATION

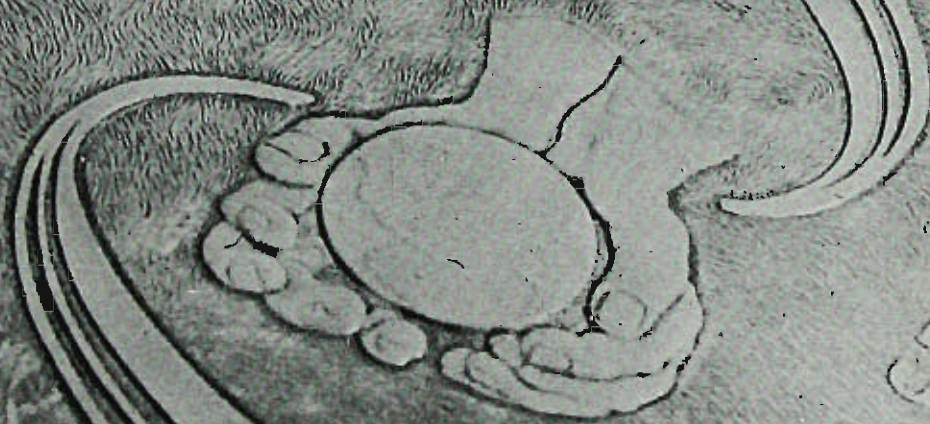
1959

STAFF

ON

PIONEER

DEER



3591



SHIRLEY PRESTON
Photography Editor

RUTH CORN
Make-up Editor

ANN CUPITO
Typing Editor

JOAN PIZZALE
Typing Editor

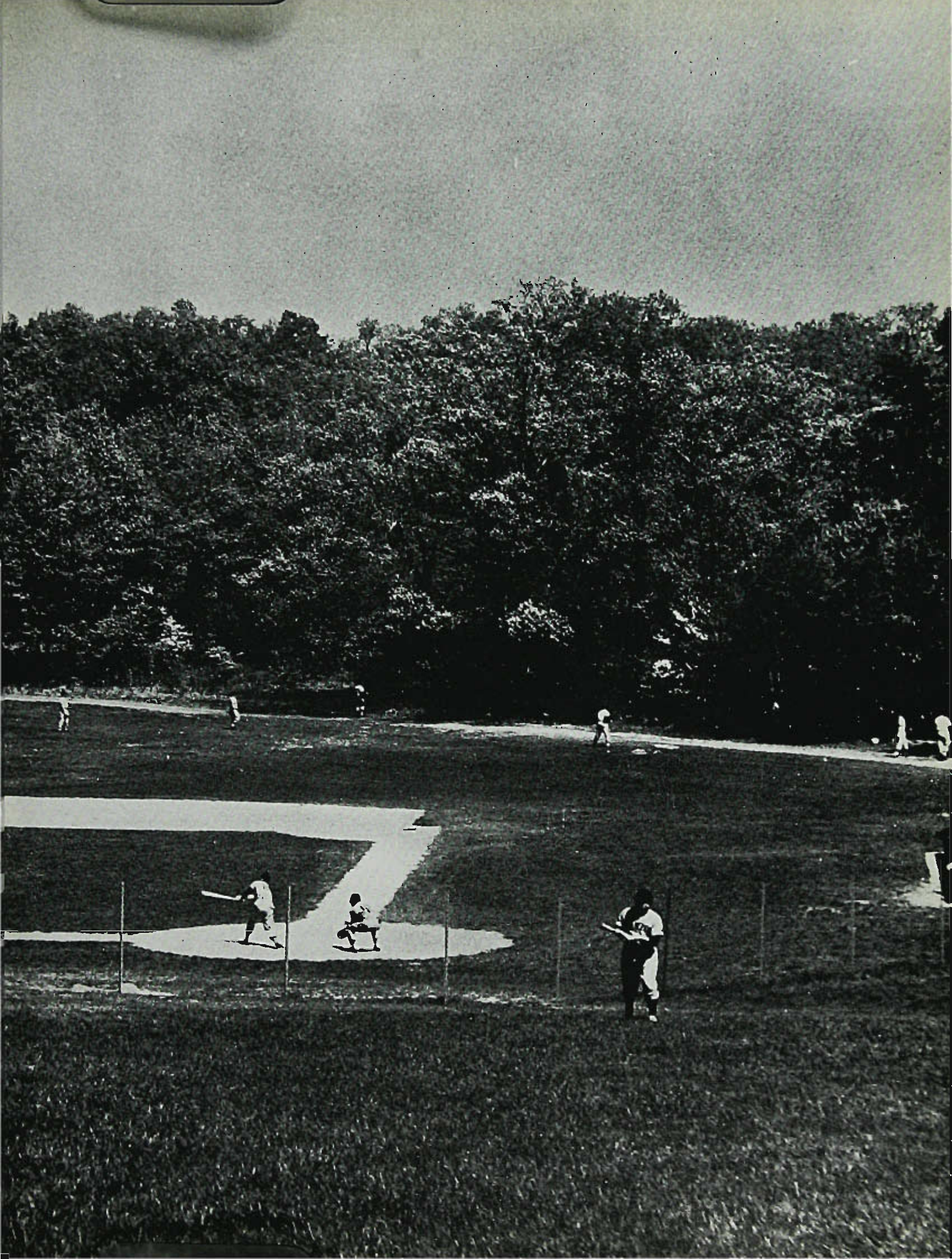
HELEN BENNETT
Assistant Editor

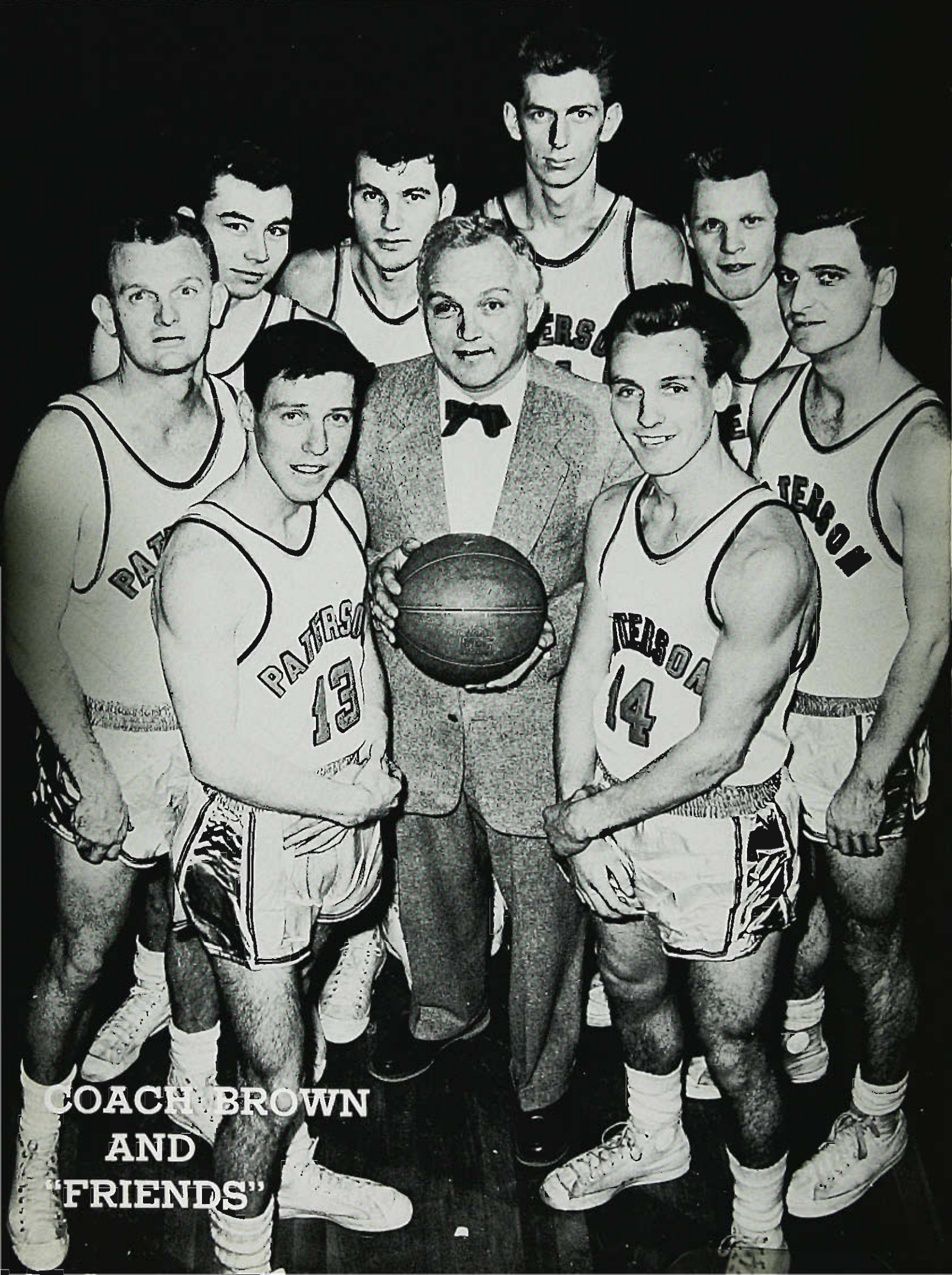


JOSEPH WALDMAN
Sports Editor

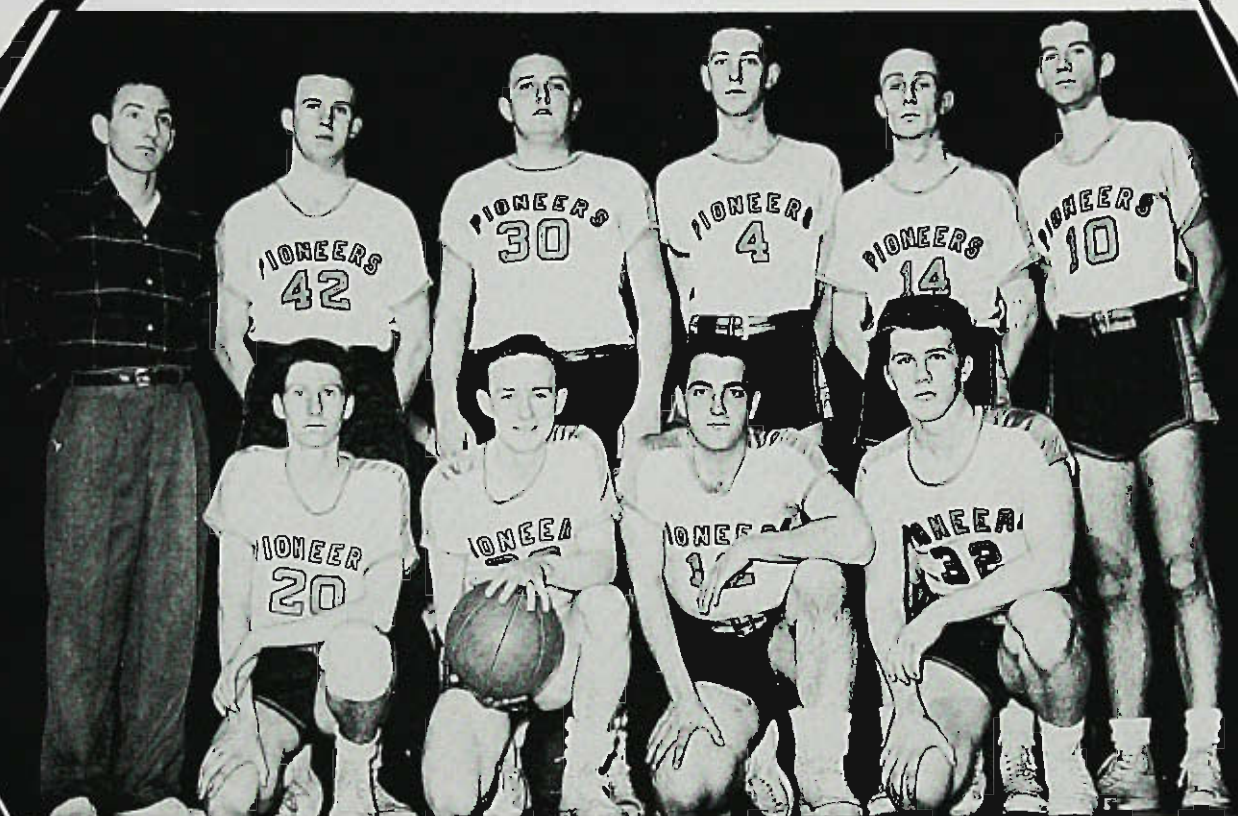
SPORTS







COACH BROWN
AND
"FRIENDS"



JUNIOR

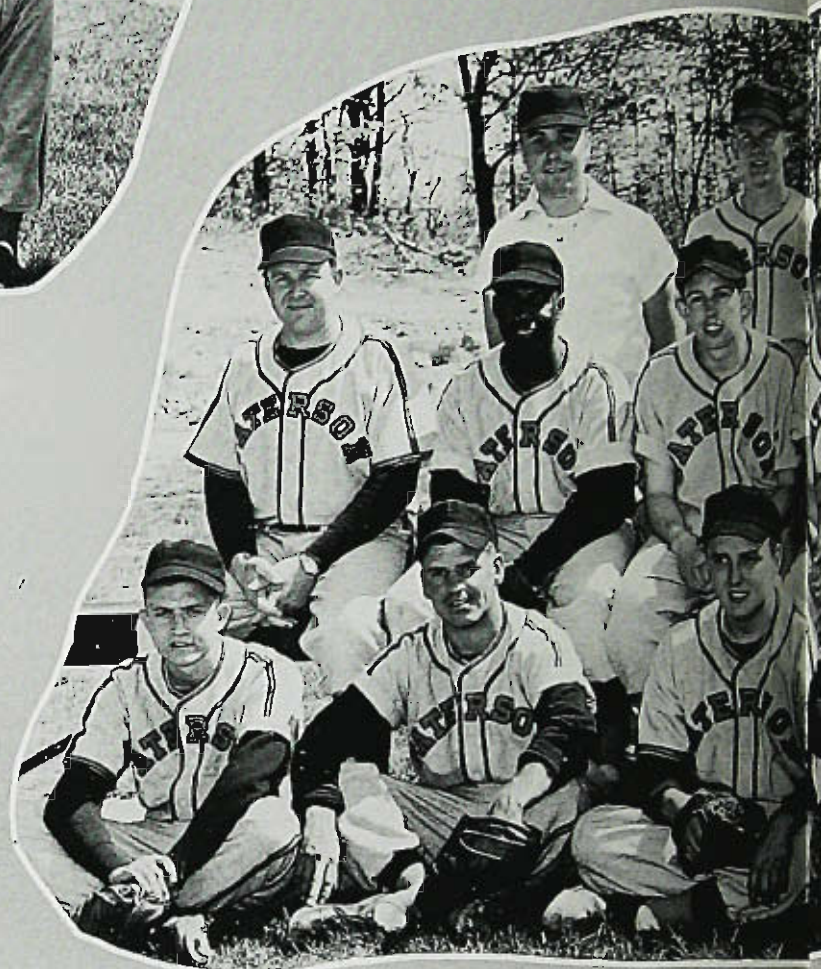


VARSITY

Larry Copelton demonstrates



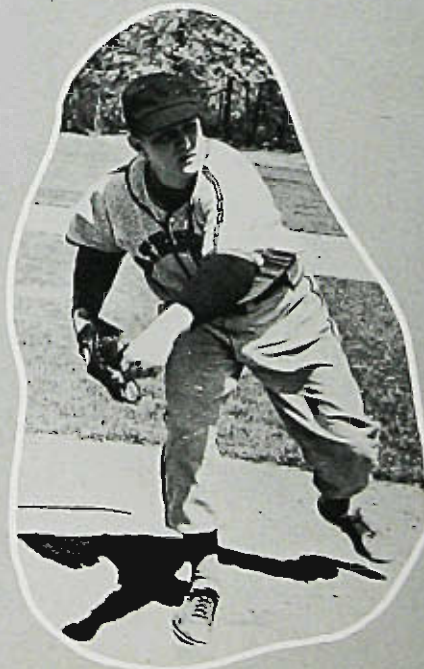
Earl Mege cuts one off



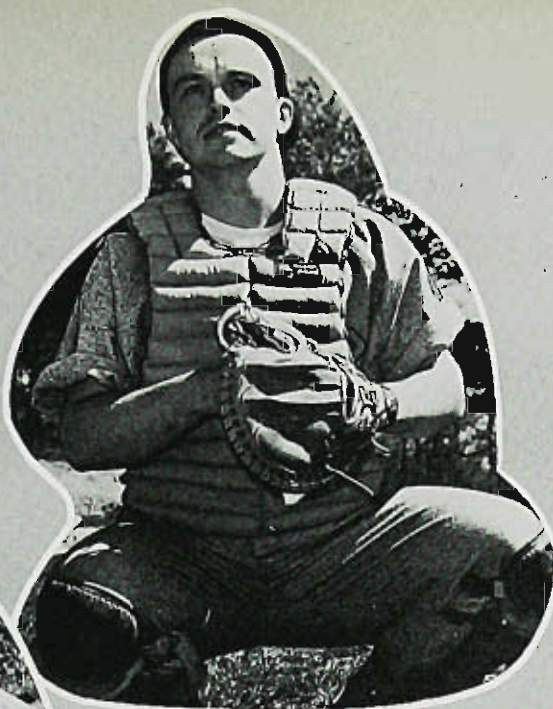
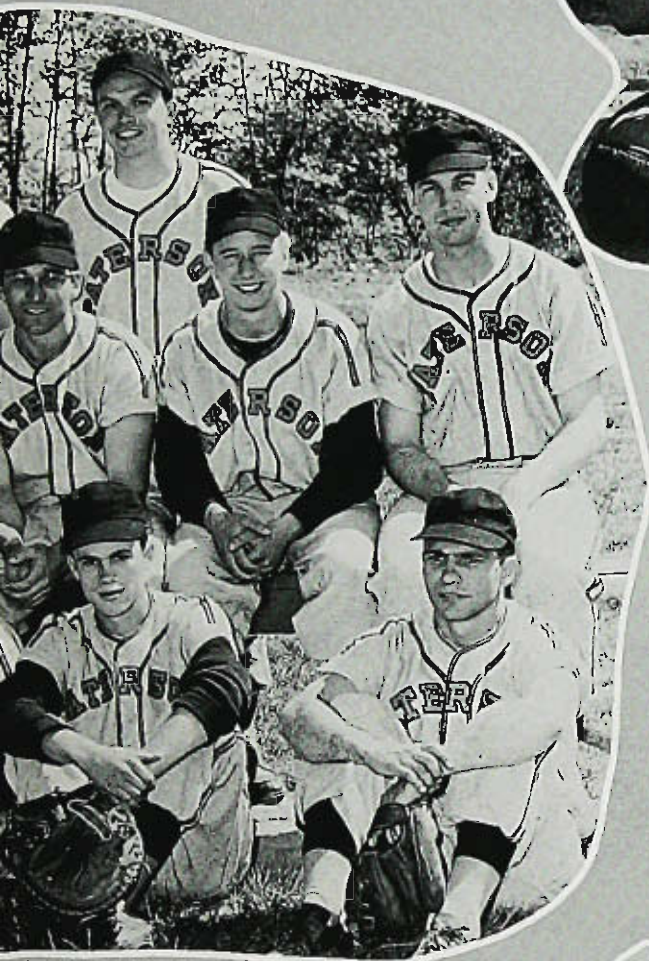
BASE



"Pop" Derens takes the peg



Dick Ruddy lowers the boom



Bill Flynn waits
for the delivery



Adam Richberg prays
one down



Danny Dransfield gobbles up another

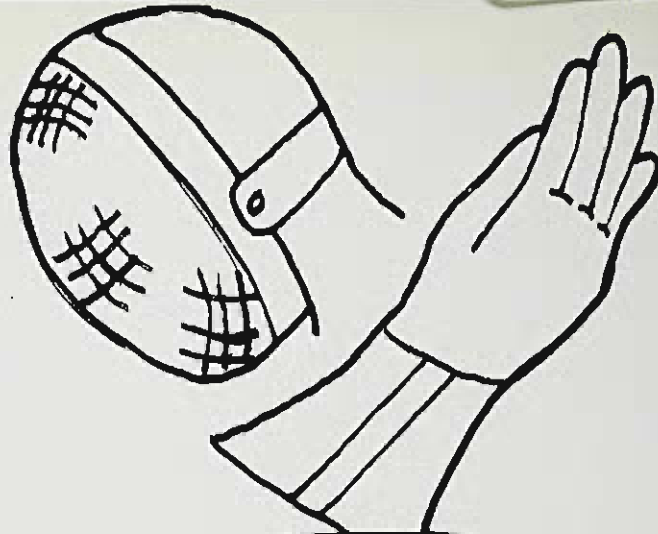
BALL

Ed "Stretch"
Bednarz -
true to form



Dick Stone patiently waits and waits

FENCING



TEAM



Earl Mege



Dave Alexander



Vince Meyers



Frank Fincken



Gerny Gelfand



Adam Richberg



P
C
H
E
E
R
S
R
L
E
A
D
E
R
S



CLASS OF 1957



CLASS OF



CLASS OF 1958



1959



This We Have Chosen

As Our Life's Work



As I leave the school I am filled with mixed emotions—A joy and anxiety of the six weeks to come. In this period I will put into operation all the educational devices accumulated during my college career. Yet I am doubtful and a little frightened of what seems to be the unknown. And so, I said goodbye to my friends and with hope in my heart I shall start out to accomplish a great part of my chosen profession.



At last! Here is the school where I will spend the next six weeks. It was just as I pictured any other school; a sturdy stone building with children standing outside waiting eagerly to start the day. As I walk up to the school, I wonder what new and stimulating experiences await me inside.

This is one of the first big moments. Will their impression be a favorable one? What shall I say? Will they like me? Excitement and a feeling of curiosity seem to arise as introductions are made.



Blue

There goes the first bell. Should I be doing something? While they come through the door I can see their faces change from surprise to curiosity. A sea of eyes focus on me as I am being introduced. I can see by their smiles as I say hello that I have become one of them.



I dedicate my school day to God and my country. I pray that all my endeavors prove to be successful and beneficial to my pupils.



I stand in front of the class, all eyes gaze upon me, waiting for my first words. There is a lump in my throat as I whisper, "Let's take out our spelling books." After a few minutes my role as teacher resumes until my nervous unsteady feeling passes away and there I stand—teaching! At last, I know everything around me—the children, books, desk, etc., are part of me and here is where I, too, belong.



10:30 and it is time for recess. Soon the children will be full of vim and vigor and raring to go. Row by row, the children go to the wardrobe closet and get their things. As they pass before me, I wonder if I can control these children and provide enough entertainment for them. Now they're ready and out we go.



I wonder—will the games I have chosen be enjoyable for the children? Will they have fun? Oh, I wish I were sure. They're all lined up, impatiently waiting for me to start the game, I had better give the signal — Why — this is fun! The time is flying by. It almost seems a shame to have to stop now.



Johnny needs more help than the others in addition facts. What can I do to arouse his curiosity? I know — the other day when we were discussing transportation, he was interested in cars. I can show him how the use of cars may correlate with addition. "Johnny, please step up to the desk!"



Now that I see the papers piled on my desk questions run through my mind. How can I be sure to grade them fairly? Have other teachers been doubtful as I am? I can only hope that I will succeed in this difficult task and that the class will accept my decision. Then the next time I should not be so apprehensive; it will soon become a matter of normal procedure.



I say good-bye to the people whose understanding, kindness and patience have helped me through this worthwhile experience.



Practice teaching is wonderful but coming back to State makes me realize the end of our college days is near. I can't imagine myself saying goodbye to all the people I've grown close to for the past four years. But as they say, "All good things must come to an end."

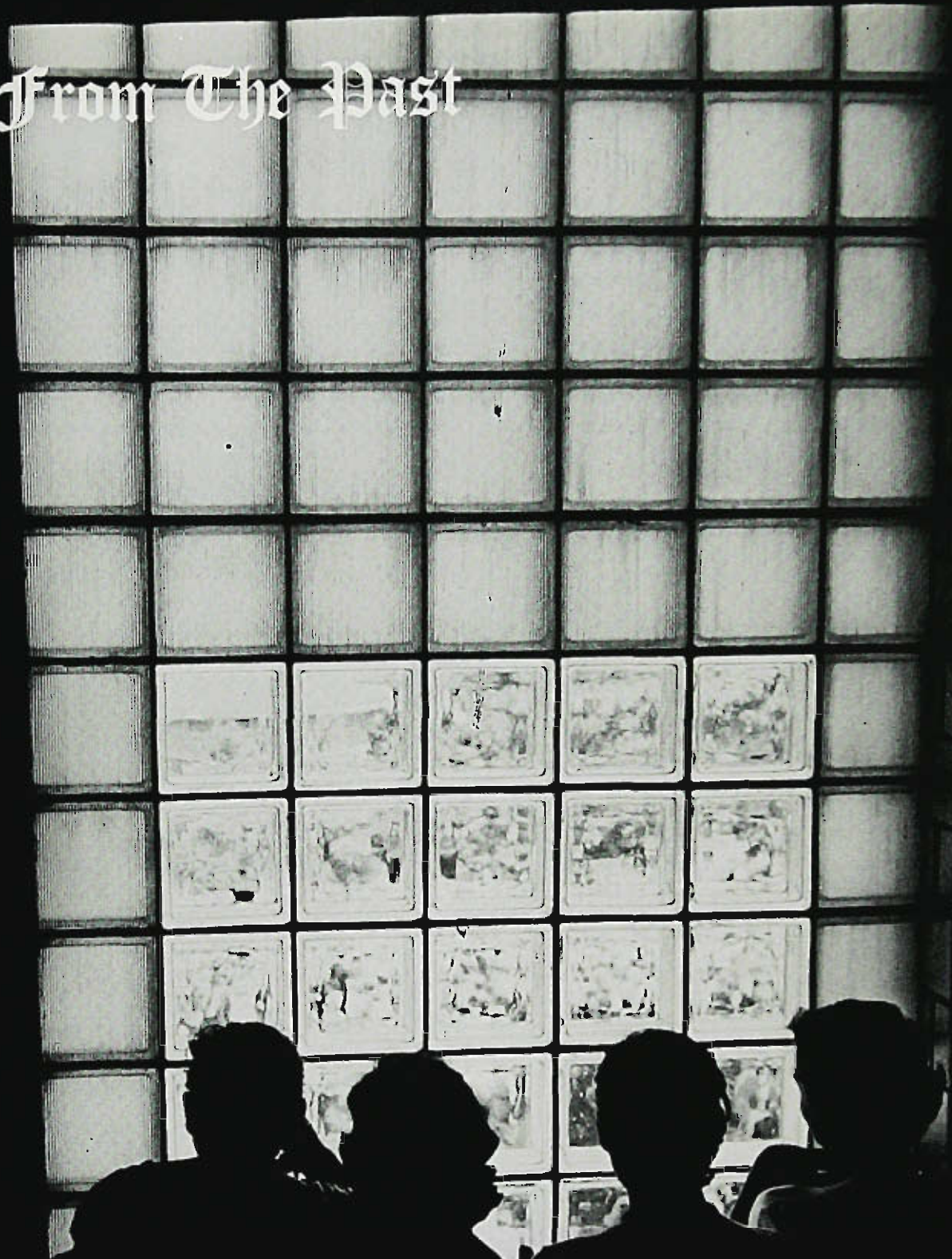
NAME	ADDRESS
Alexander, David	40-23 Tierney Place, Fair Lawn
Abruscato, Geraldine	392 Semel Avenue, Garfield
Ackerman, Mary T.	44 Hine Street, Paterson
Albinson, Agnes I.	Runnymede Road, Essex Fells
Almquist, Lais S.	316 Walthery Avenue, Ridgewood
Barton, Alice H.	Pine Brook Road, Box 582, Mt. View
Bennett, Helen Rose	1107 Webster Avenue, Teaneck
Berman, Phyllis	161 Hope Avenue, Passaic
Bober, Beverly Ruth	253 East 31st Street, Paterson
Bosland, Joan Casagrande	156 Washington Avenue, E. Paterson
Brent, Betty	11 Bancroft Place, Fair Lawn
Brookman, Joyce G.	61 Grove Avenue, Glen Rock
Brphy, Barbara M.	437 Lafayette Avenue, River Edge
Brown, Rocita Morie	211-16th Avenue, Paterson
Caronia, Bridget	376 Paulison Avenue, Passaic
Carroll, Dorothy E.	115 Broadway, Paterson
Casaleggio, Thelma Theresa	26 Orchard Street, Pompton Lakes
Chesler, Judith B.	995 Teoneck Road, Teoneck
Christie, Janet A.	16 Vincent Street, Hawthorne
Conlon, Marilyn Carol	9 Adelaide Place, Edgewater
Conti, Angelo A.	2015 Hoyt Avenue, Fair Lee
Corn, Ruth L.	490 East 23rd Street, Paterson
Cupito, Anne	62 Nichols Street, Newark
Dardia, Jane	432 Market Street, Paterson
Dembek, Joan D.	645 McBride Avenue, W. Paterson
Devens, Audrey	Comly Road, Lincoln Park
Dioszeghy, Carol Anne	12-4th Avenue, Westwood
Dizzia, Phyllis M.	1029 East 19th Street, Paterson
Dorl, Barbara J.	185 East 31st Street, Paterson
Evans, Anne Christine	90 Totowa Road, Totowa Boro.
Fairchild, Valerie L.	21 Gionti Place, No. Haledon
Faltings, Margaret Anne	14 Sussex Road, Clifton
Farley, Maryan J.	419 Alpine Terr., Ridgewood
Fial, Mariann	93 Division Avenue, Garfield
Fichter, Eugene	606 East 24th Street, Paterson
Fincken, Frank F.	3 Barrington Avenue, Clifton
Gelfand, Gerald	12-07 Western Drive, Fair Lawn
Gilbert, Rosemarie	320 Malcolm Avenue, Garfield
Gold, Paula	337-12th Avenue, Paterson
Guttman, Dena	100 Howard Avenue, Paterson
Hennig, Barbara Obrig	3-20 Grunauer Place, Fair Lawn
Holloway, Lili Mae	16 Gardiner Place, Montclair
Hulbert, Jack Earl	1 David Scott Drive, Preakness
Hymson, Sylvia	456 East 31st Street, Paterson
Ingram, Ethel M.	1272 Lorraine Avenue, West Englewood
Judlaw, Audrey N.	471 Oak Street, Passaic
Katz, Barbara H.	121 Lawrence Street, Hackensack
Kennelly, Carole A.	250 North Van Dien Avenue, Ridgewood
Krzeminski, Patricia Lucinda	92 Main Street, Garfield
Laizure, Barbara Lois	94 Rollins Avenue, Clifton
Lamanna, Phyllis Anne	0-74 Yerger Road, Fair Lawn
Lamela, Donna Marie	665 River Drive, East Paterson
Leff, Barbara K.	169 Edgemont Place, Teaneck
Lilla, Dolores F.	188 Squirrelwood Rd., W. Paterson
Longcare, Robert R.	R.F.D. No. 1, Warwick, N. Y.
Lynch, Iris	7 Barrington Avenue, Clifton
MacGill, Marilyn L.	75 Aqueduct Avenue, Midland Park

NAME

ADDRESS

Moloney, Donald	715 Highland Avenue, Paramus
Mege, Earl R.	W. 212 Josephine Avenue
McGuinness, Margaret E.	554 Ogden Avenue, Teaneck
Meyers, Vincent J.	584 East 31st Street, Paterson
Moreck, Jean A.	47 Ferncliffe Road, Bloomfield
Moriarty, Evelyn M.	Dogwood Trail, Fayson Lakes, Butler
Nebiker, Mary Ann	32 Wood Street, Garfield
Niewarowski, Patricia A.	282 Washington Avenue, Hawthorne
Pantel, Elaine	367 Ninth Avenue, Paterson
Parkin, Grace	440 Southside Avenue, Haledon
Percarpio, Lillian A.	Boat Street, No. Haledon
Perna, Richard	162 Chamberlin Avenue, Paterson
Pinkus, Gail Judith	36 Lakeview Avenue, Erskine Lake
Pitts, June Brown	17 Gardiner Place, Montclair
Pizzale, Joan Clare	626 Bogert Road, River Edge
Polgloze, Mary Elizabeth	1-07 Hopper Avenue, Fair Lawn
Preston, Shirley A.	62 So. Broadway, Fair Lawn
Richberg, Adam Jr.	561 Madison Avenue, Paterson
Riegler, Barbara Ann	102 Hillman Avenue, Glen Rock
Robbins, Edith S.	42 Colling Avenue, Rochelle Park
Rotella, Rudolph T.	180 Madison Avenue, Paterson
Ryan, Margaret M.	23-11 Broadway, Fair Lawn
Sardoni, Phyllis Lammana	52 Strothmare Terrace, Saddle Brook
Schmidt, Lais Doherty	148 Webb Avenue, River Edge
Schoeffel, Lorraine A.	31 Suncrest Avenue, No. Haledon
Simonetti, Joan T.	633 Alanon Road, Ridgewood
Slaff, Joan Barbara	341 East 39th Street, Paterson
Sloate, Robert A.	328 Fairmont Road, Ridgewood
Smith, Rebecca J.	88 West Main Street, Ramsey
Smyth, Janet G.	329 Central Avenue, Hawthorne
Stanaland, Lew Brooks	71 East Palisade Blvd., Palisades Pk.
Staudinger, Barbara A.	2-07 Cyril Avenue, Fair Lawn
Sugalski, Mrs. Anne E.	119 Hamilton Avenue, Hasbrouck Hts.
Szilogyi, Evelyn	59 East Second Street, Clifton
Troetto, Charles	8½ Liberty Street, Morristown
Unger, George R.	106 Luddington Avenue, Clifton
Van Horn, Patricia	2 Wayside Lane, Passaic
Walsh, Jane Marie	23 Komarn Street, Newark
Winter, Joyce F.	108 Moffet Road, Mahwah
Wood, Ellen R.	503 Goodwin Avenue, Midland Park
Waldman, Joseph M.	212 Paterson Avenue, Paterson
Wilson, Bobbie Jean	349 Broadway, Paterson
Wostbrack, Barbara Tucker	72 Erie Avenue, Midland Park
Zonca, Lucy	327 Lakeview Avenue, Clifton
Zanoni, Jeane	27 Howd Avenue, Clifton

From The Past



To The Future

For Reference
Do Not Take
From the Library

DOES NOT CIRCULATE

WILLIAM PATERSON COLLEGE OF NEW JERSEY



3 3007 00758 8078

COVER BY
MYERS