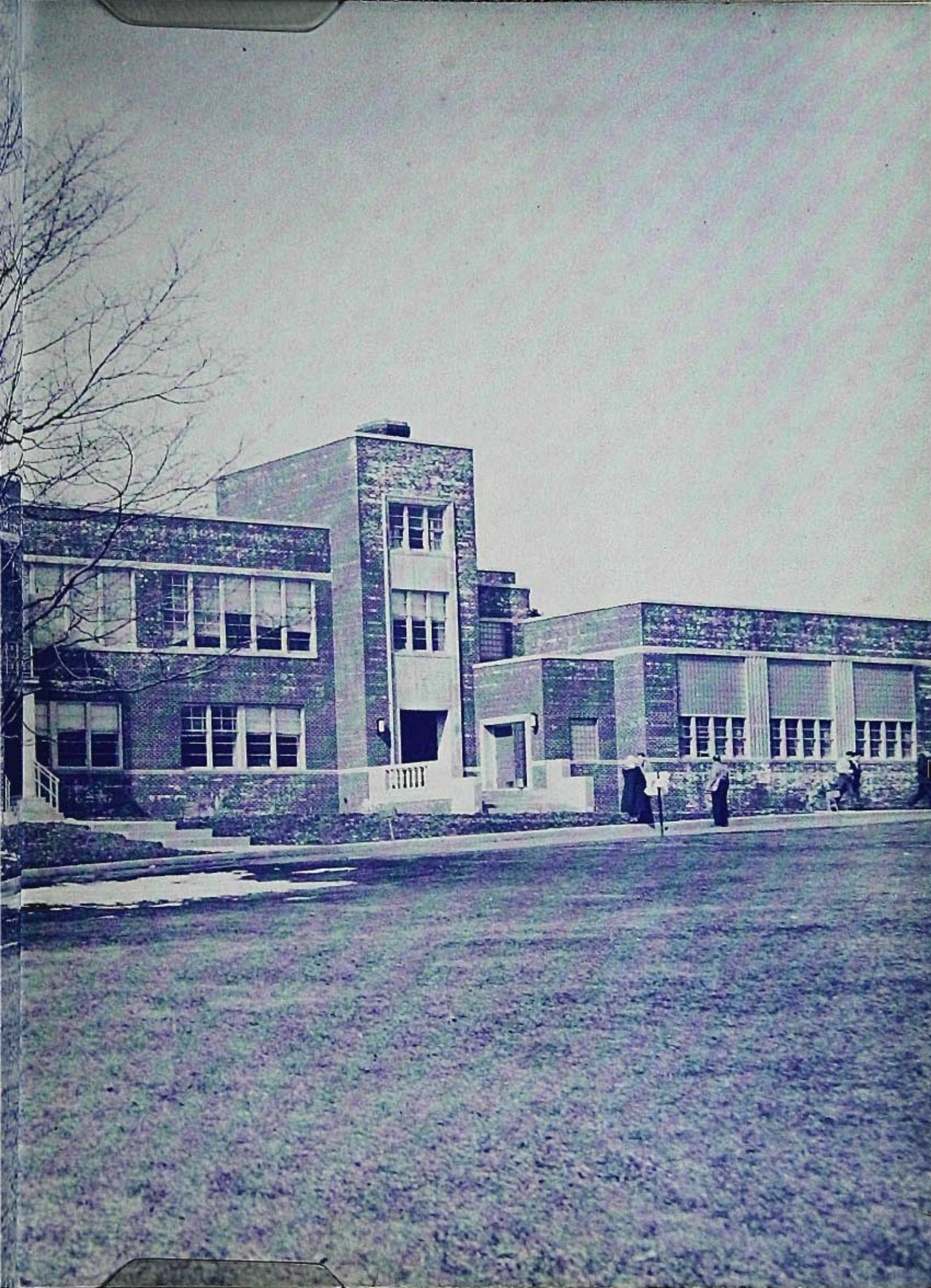




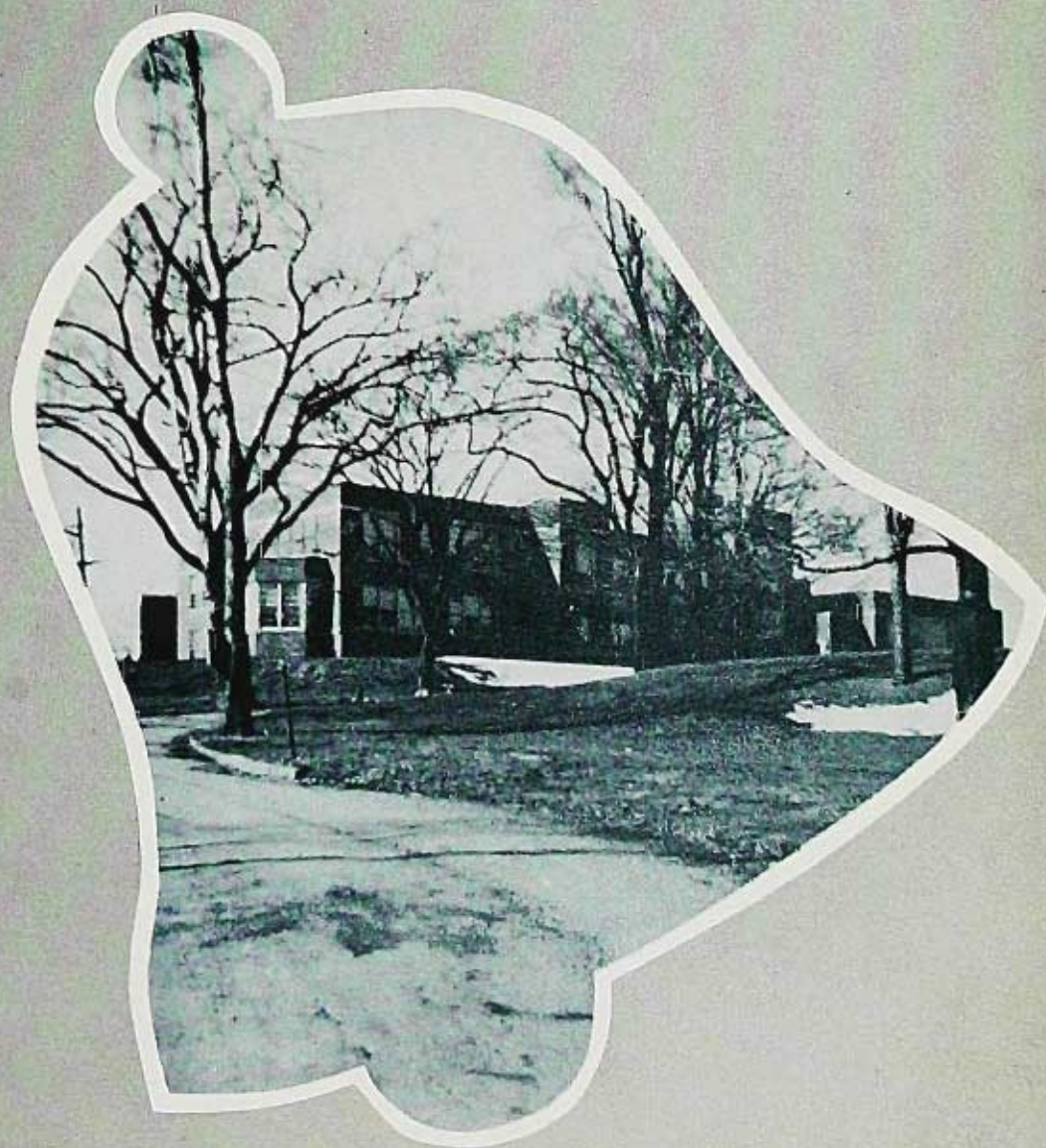
Pioneer

Vol.
12

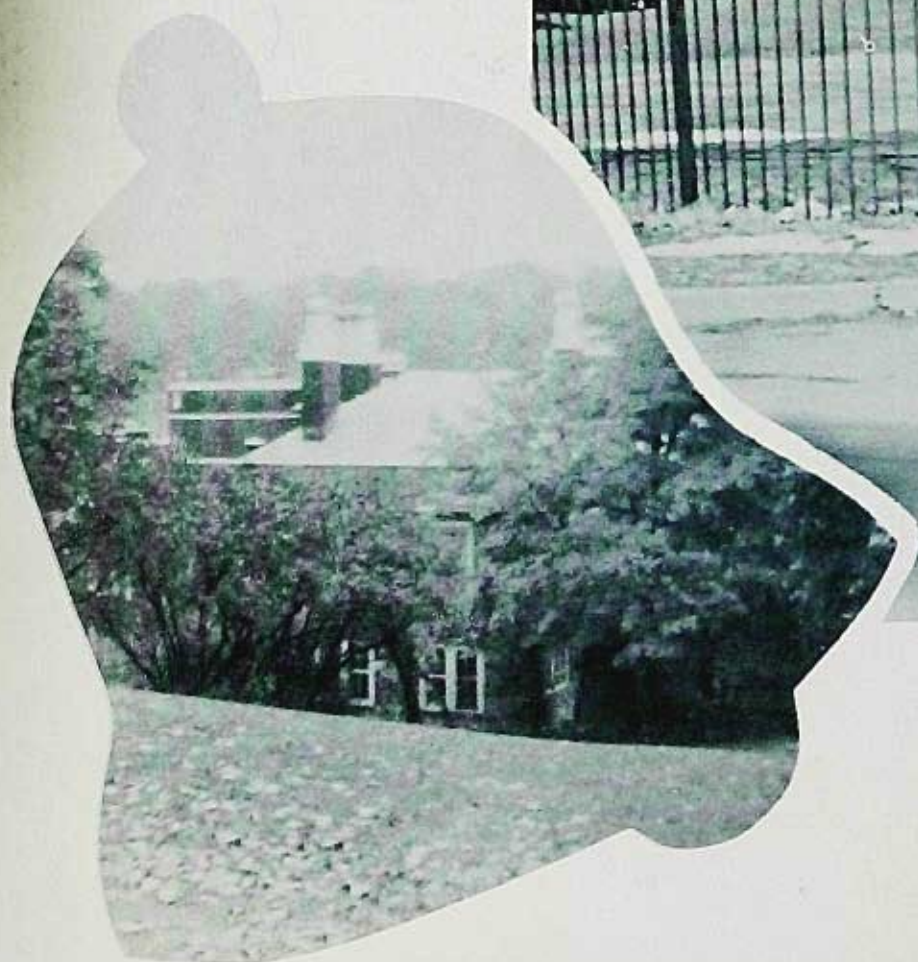
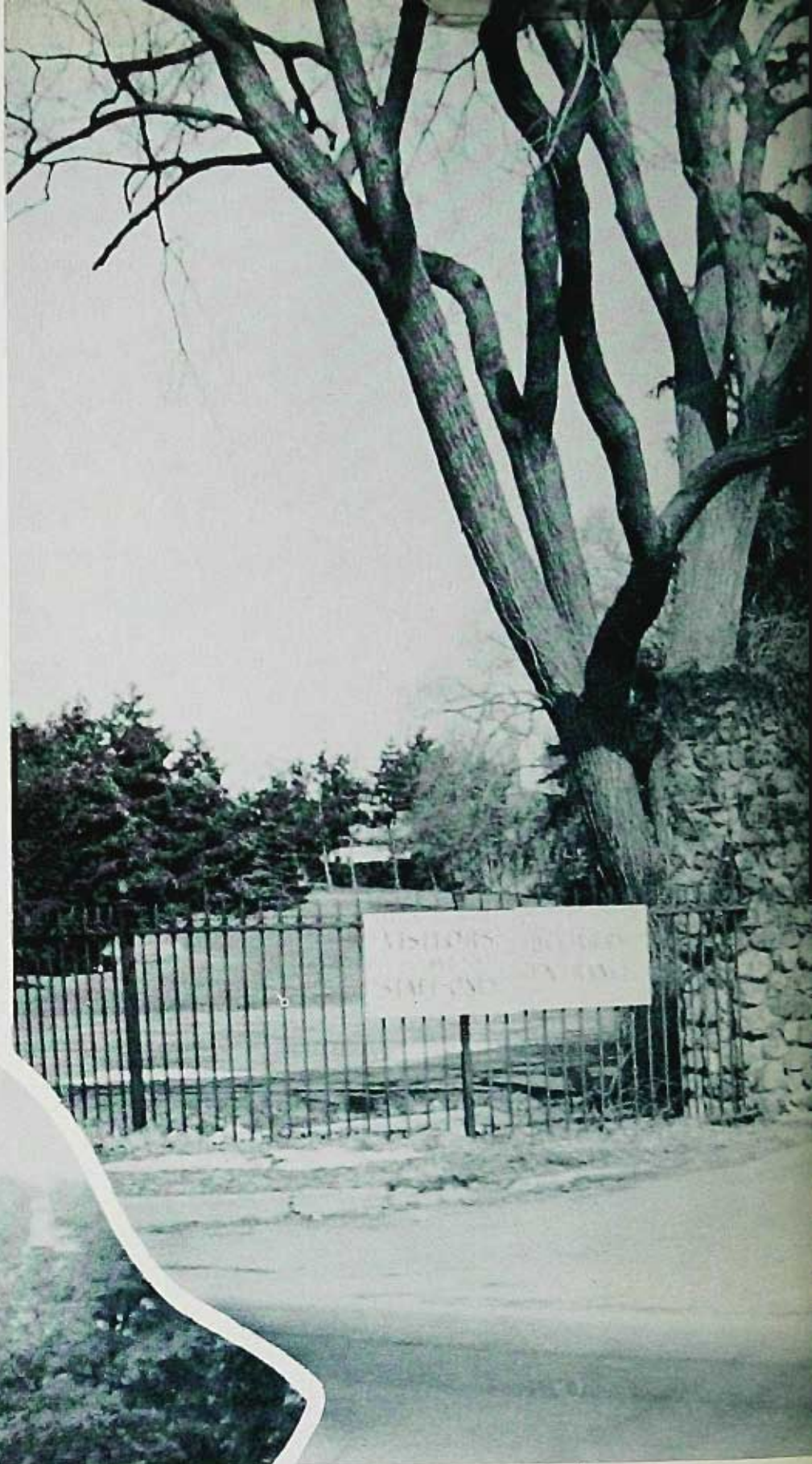




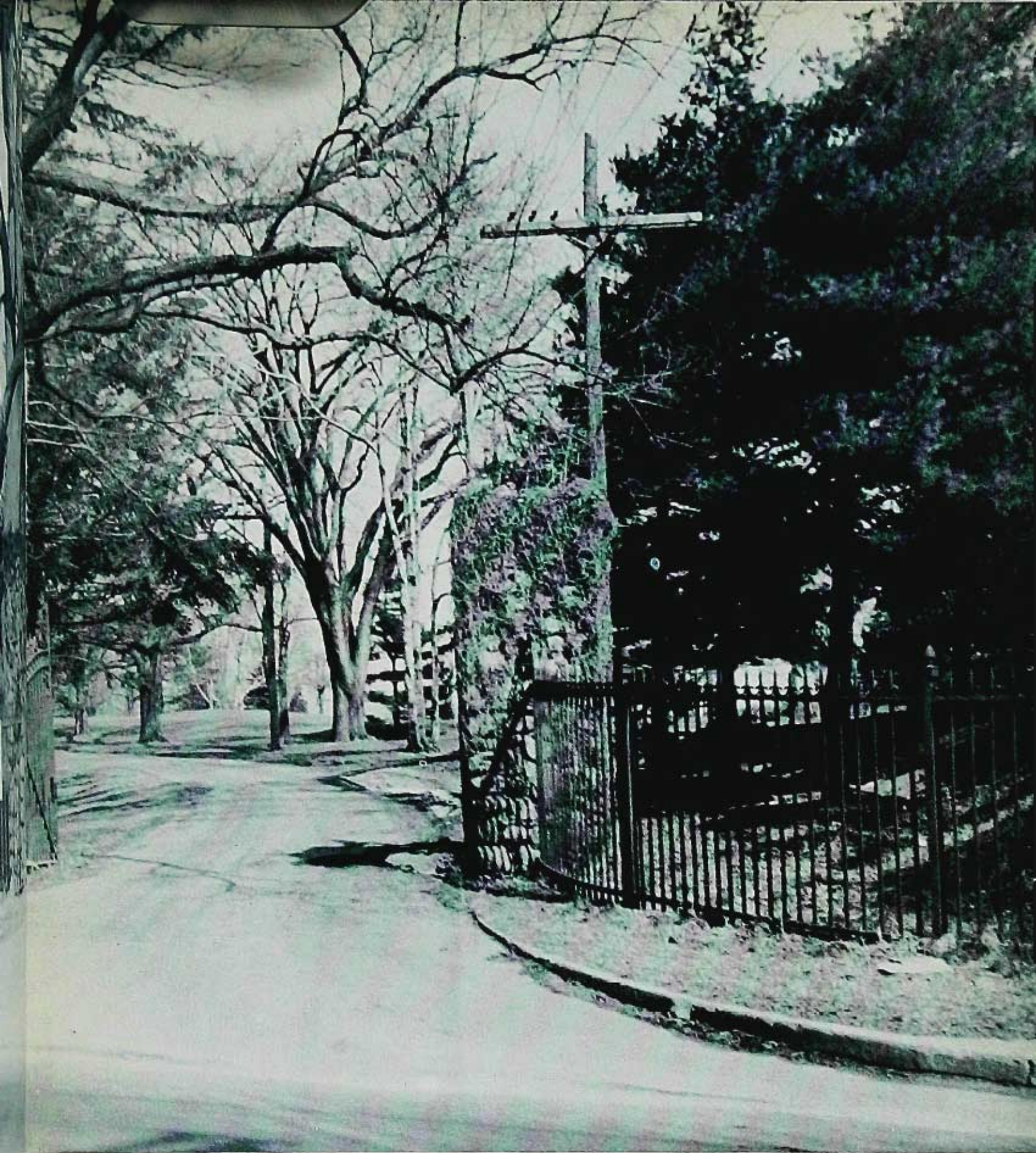
Presented by
**THE SENIOR CLASS OF
PATERSON STATE
TEACHERS COLLEGE
PATERSON, NEW JERSEY**



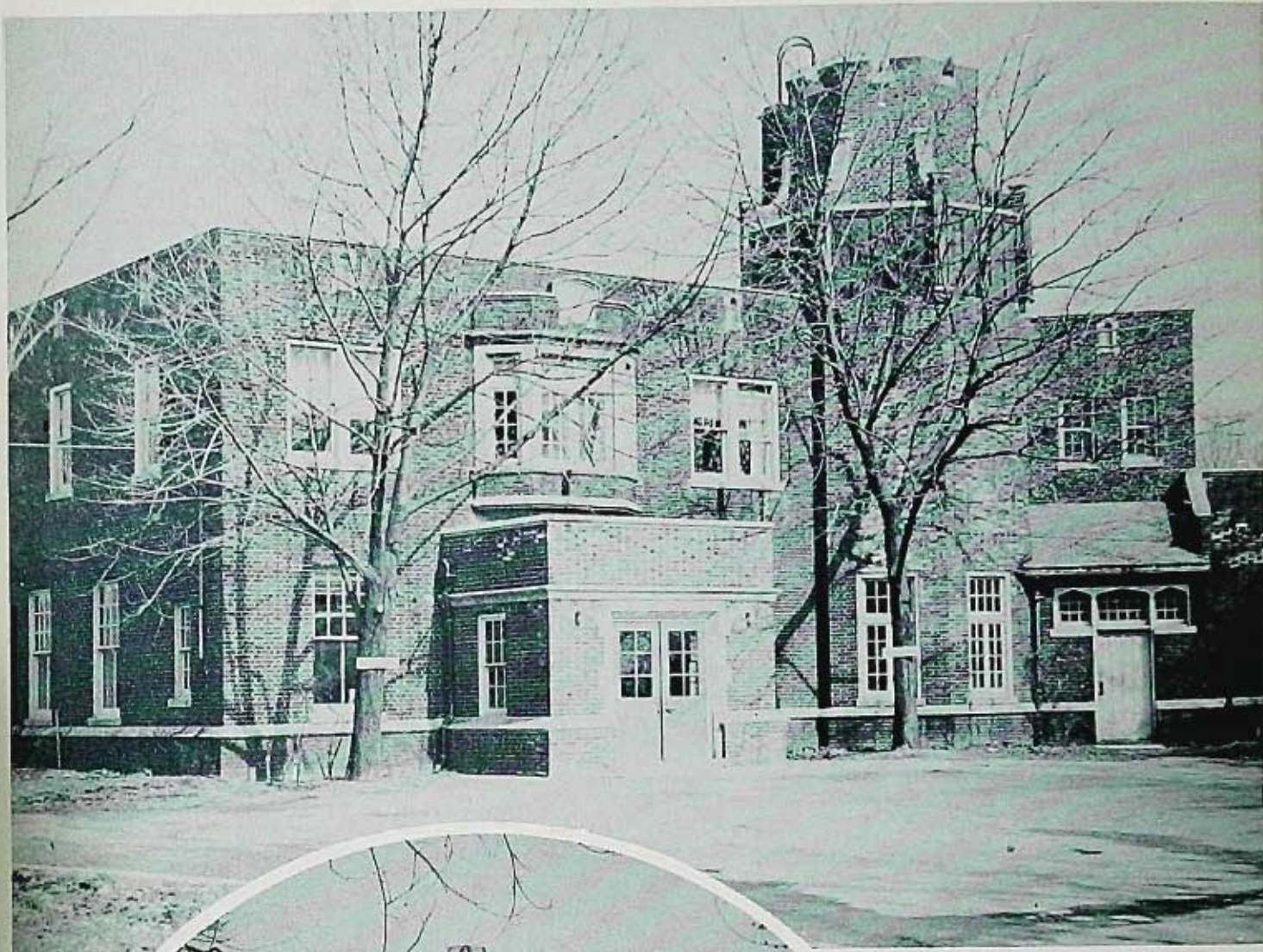
**T
H
E**



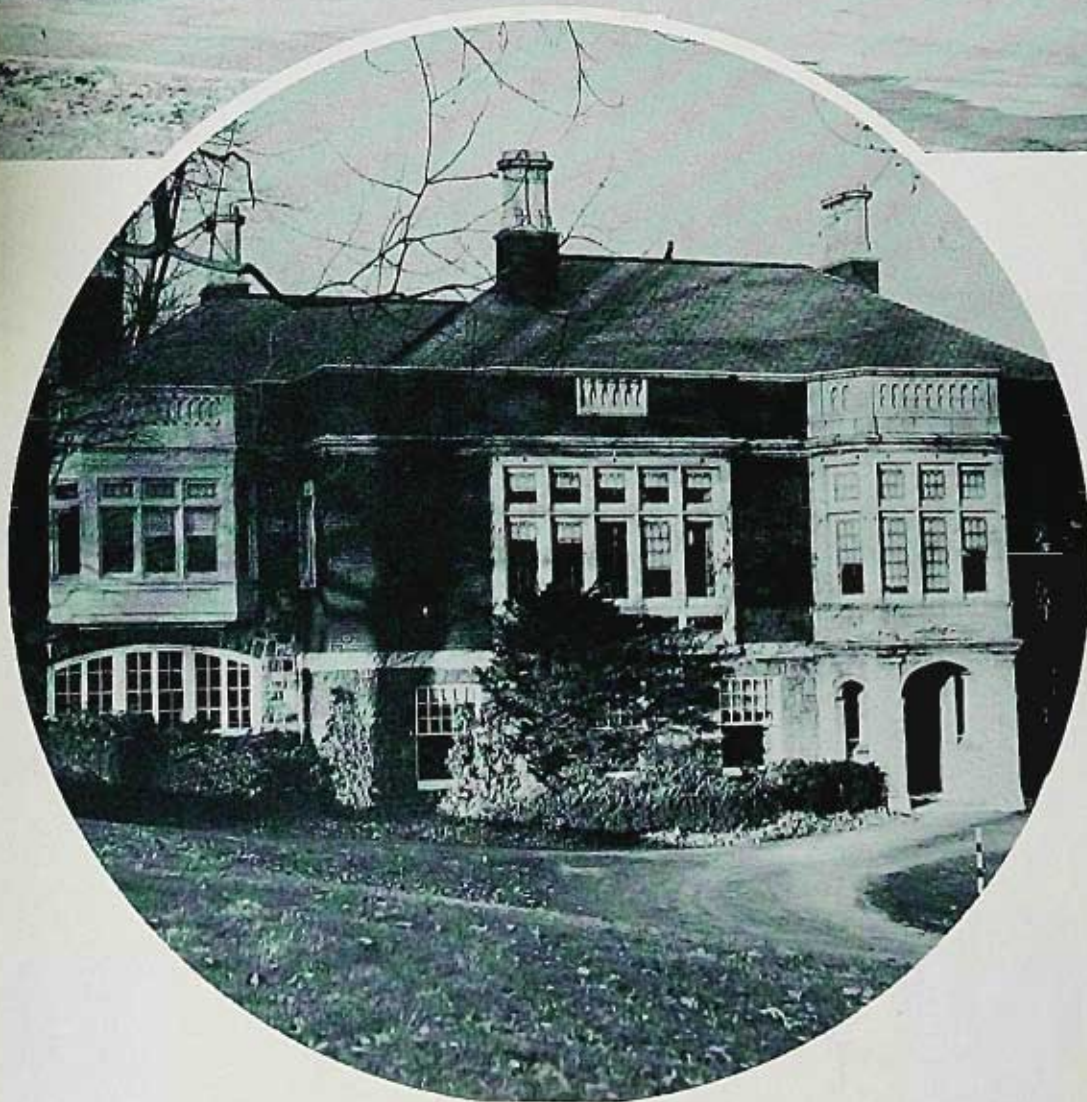
1952



52 **PIONEER**



NORTH HALL



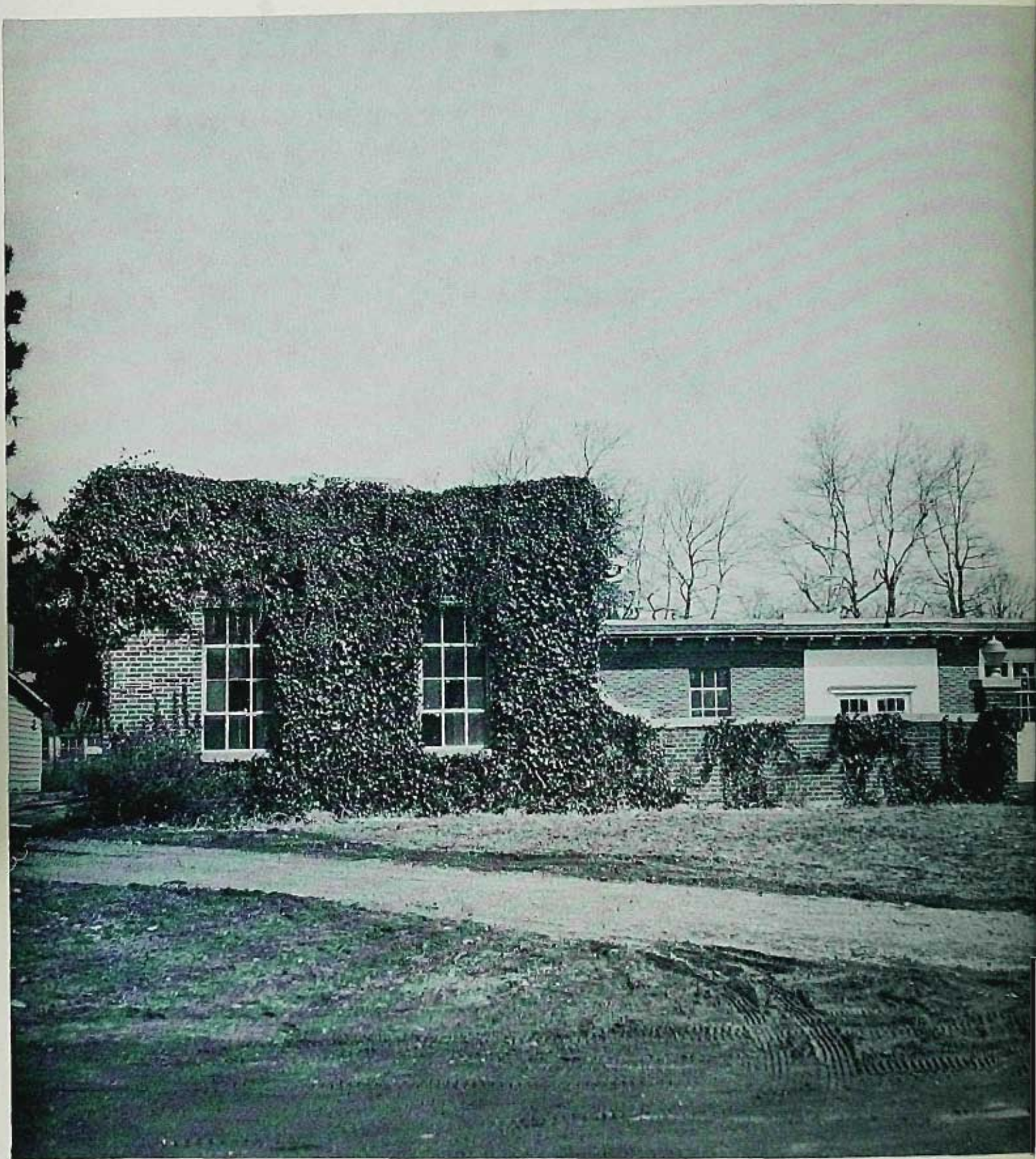
ADMINISTRATION
BUILDING
AND LIBRARY

ROUND HOUSE



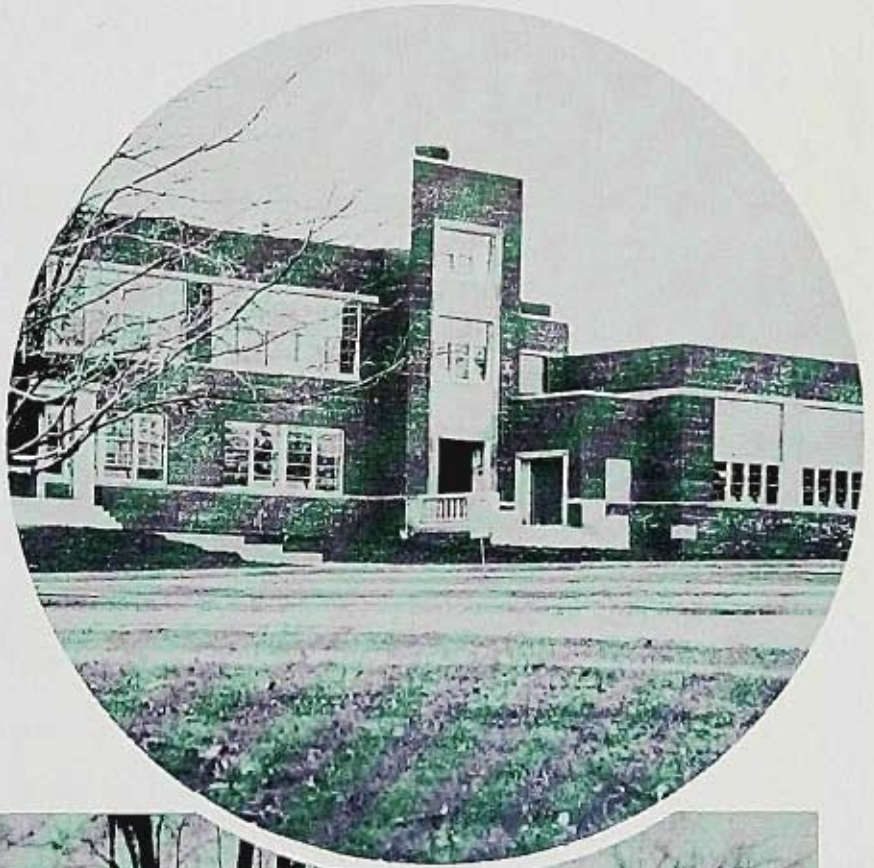
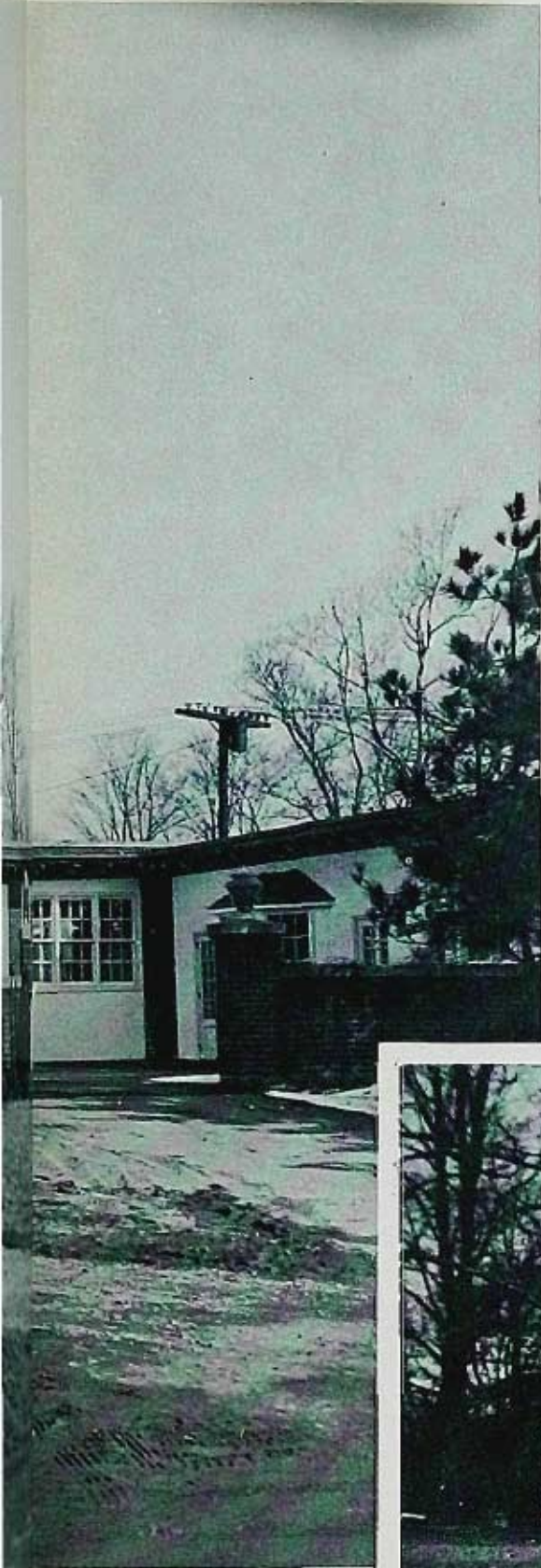
HUNZIKER HALL





STUDENT UNION BUILDING

HUNZIKER HALL







JACQUELINE BAKER
Literary Editor



STANLEY SZOT
Associate Editor



GUY LOTT
Editor in Chief



EDNA FROST
Art Editor



GLORIA SHEAR
Organization

PIONEER STAFF



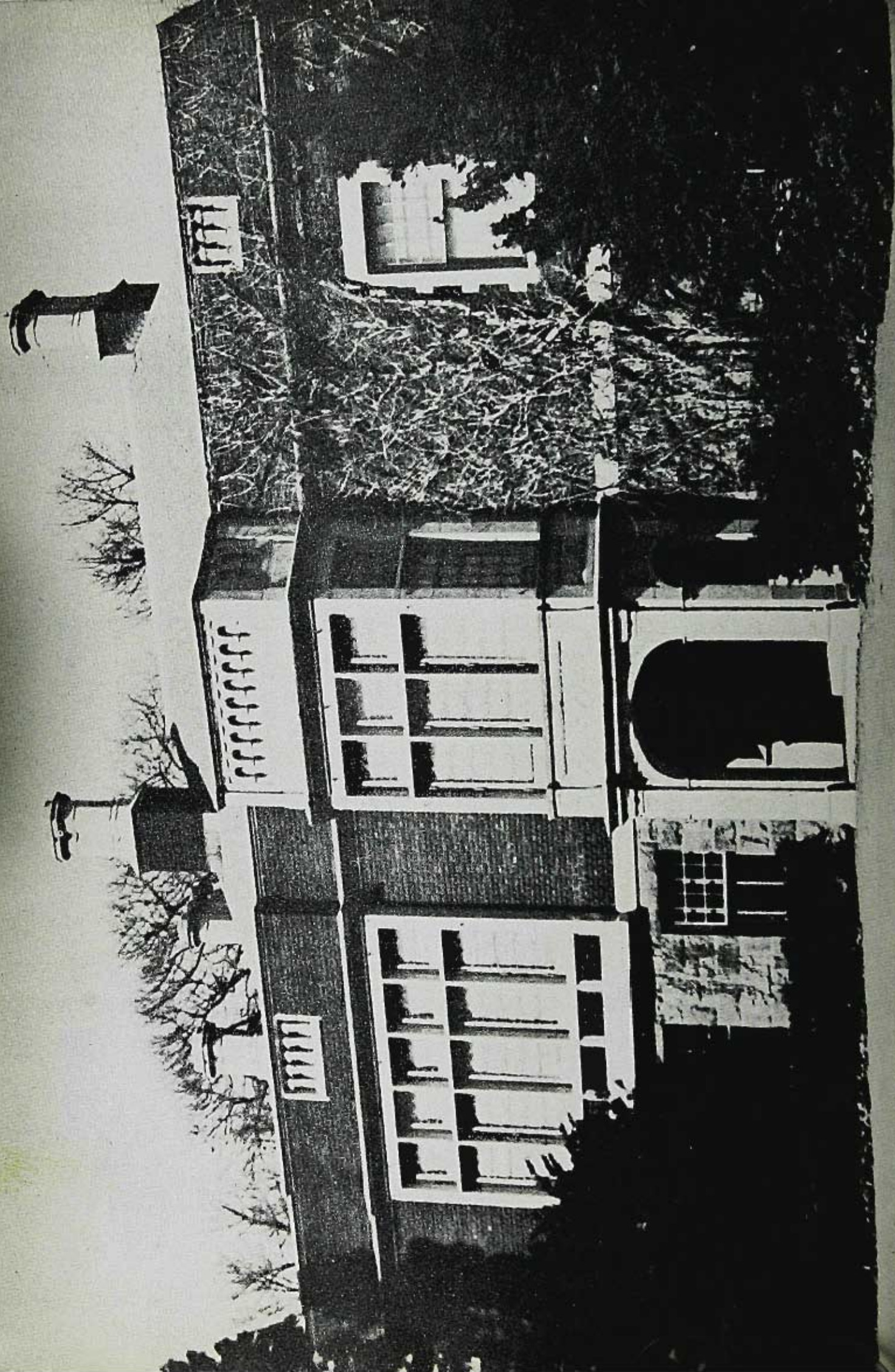
HERBERT L. ELLIS

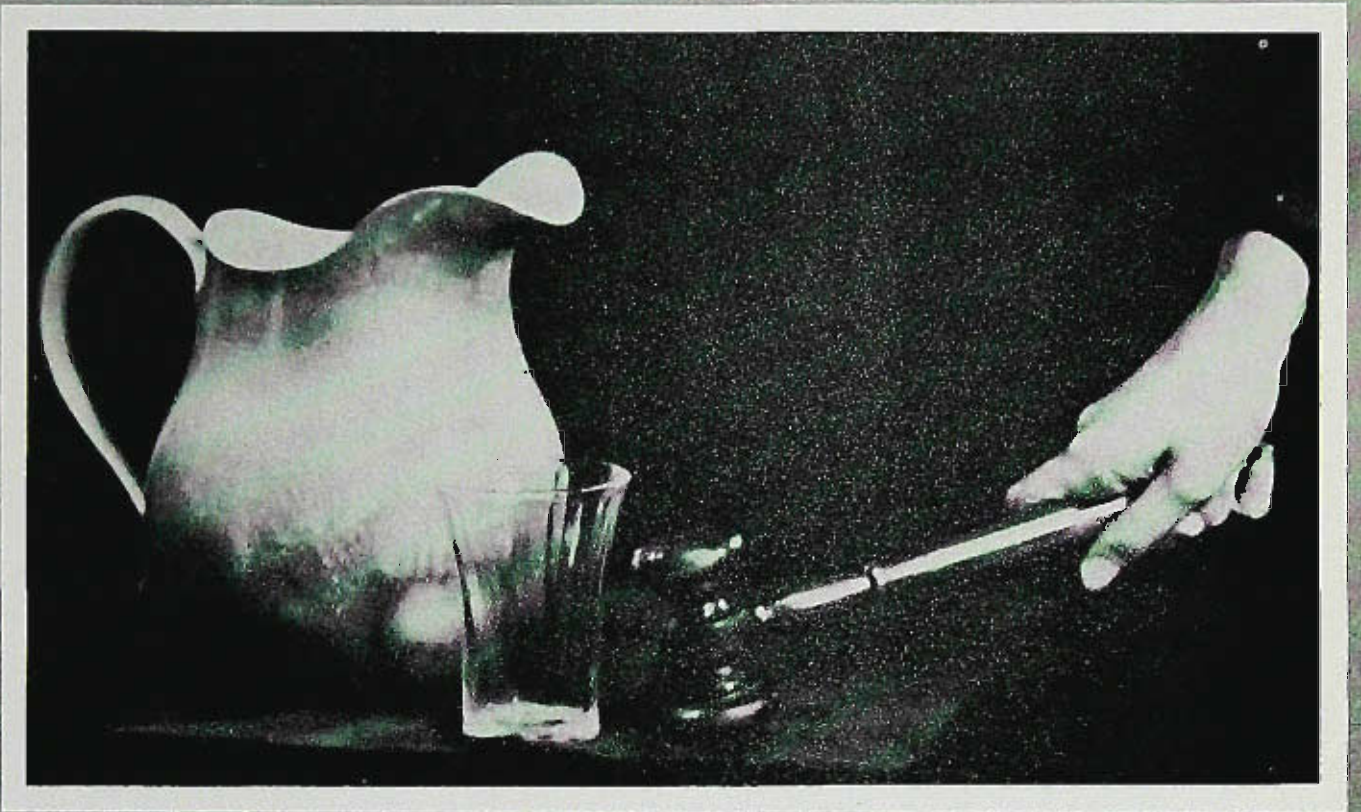
DEDICATION



E. CHRISTINE STROOP

ADVISER



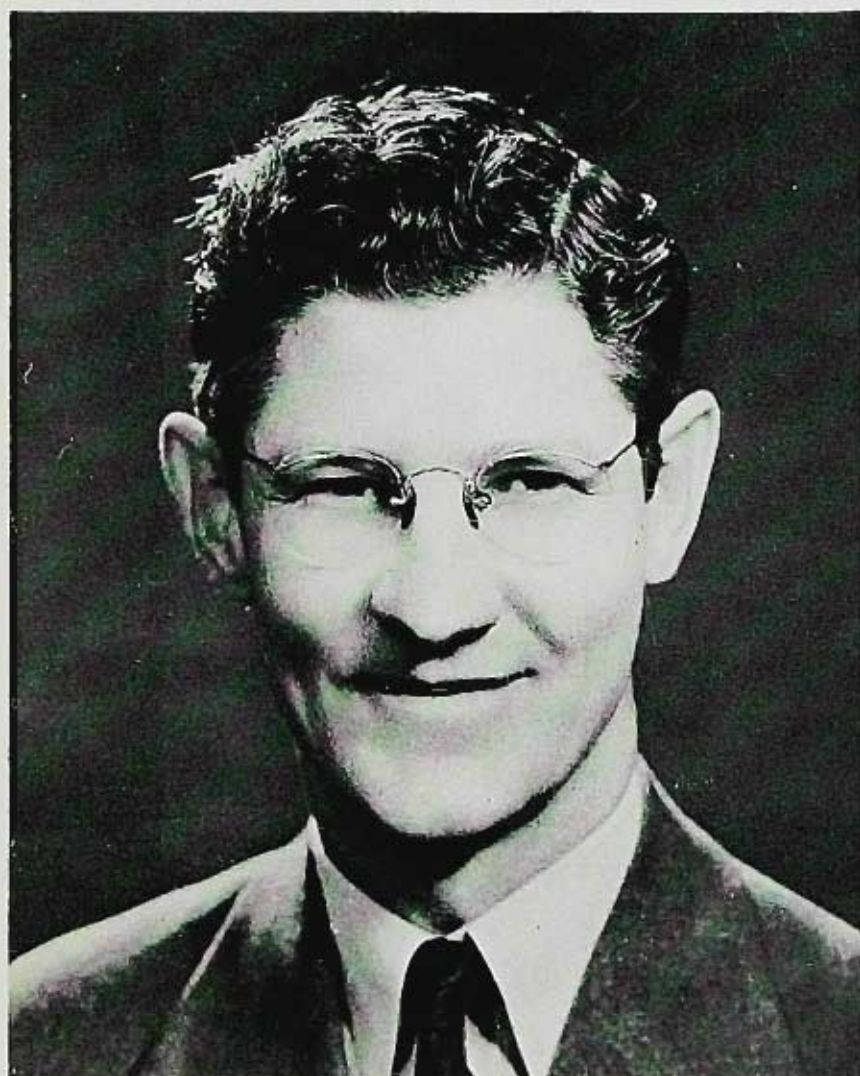


FACULTY



DR. CLAIR S. WIGHTMAN
President

DR. K. WHITE
Dean of Instruction



MR. HOWARD L. HAAS
Chairman of Student Life

FACULTY



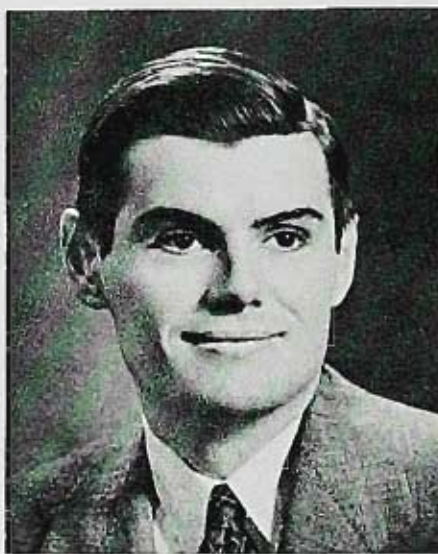
ROBERT A. ADDISON, B.A.



LOUISE A. ALTENER, Ph.D.



TUNIS BAKER, Ph.D.



WILLIAM BAUMGARTNER, M.A.



SALLY M. BURK, B.A.



HERBERT CALIFANO, M.A.



HERBERT L. ELLIS, M.A.



M. ARDELL ELWELL, M.A.

FACULTY



HERBERT FREEMAN, Ph.D.



EMILY GREENAWAY, M.S.



STANFORD HENDRICKSON



CHRISTIE JEFFRIES, M.A.



MARK KARP, Ph.D.



MILDRED R. LEE, M.A.



BENJAMIN MATELSON, M.A.



GORDON E. MATTHEWS M.S.

FACULTY



ALICE M. MEEKER, M.A.



RALPH W. MILLER, M.A.



RAYMOND MILLER, M.A.



HARRIETT MODEMANN, B.A.



LOUIS C. NANASSY, Ph.D.



ELIZABETH M. RINALDI, B.S.



E. CHRISTINE STROOP, Ph.D.



MARGUERITE B. TIFFANY, M.A.



JULIETTE A. TRAINOR, B.A.

FACULTY



HEDWIG TREPKUS, M.A.



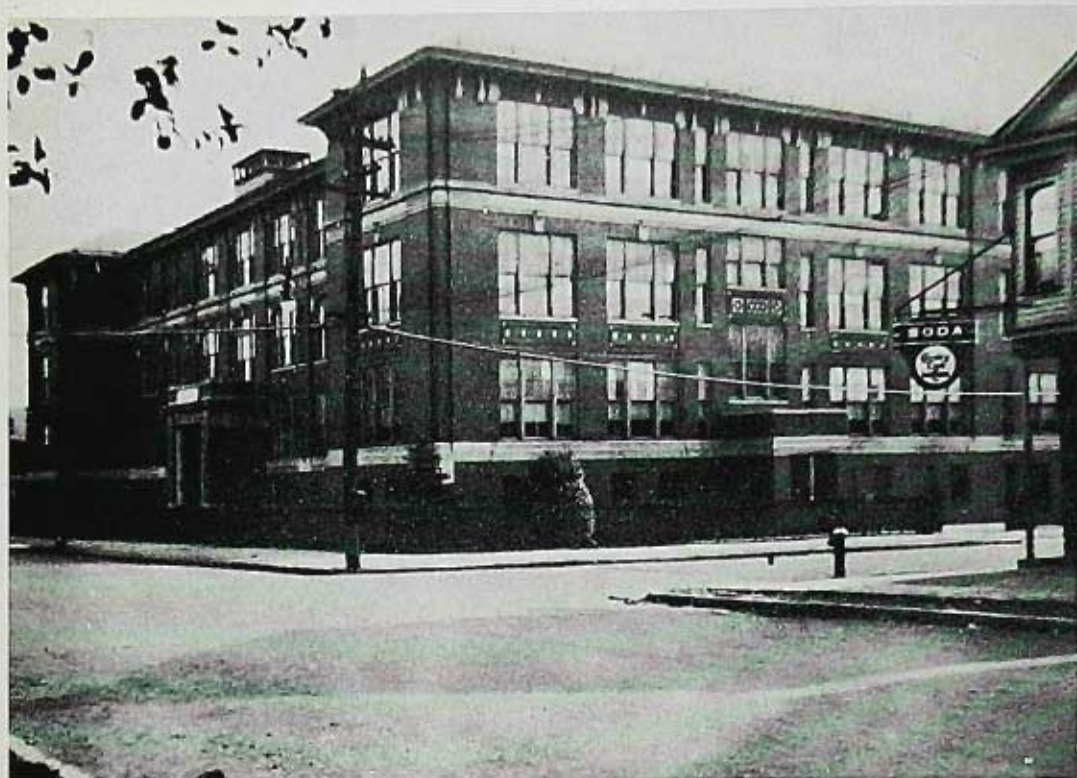
FRANK ZANTINO, B.A.



SAMUEL P. UNZICKER, Ph.D.



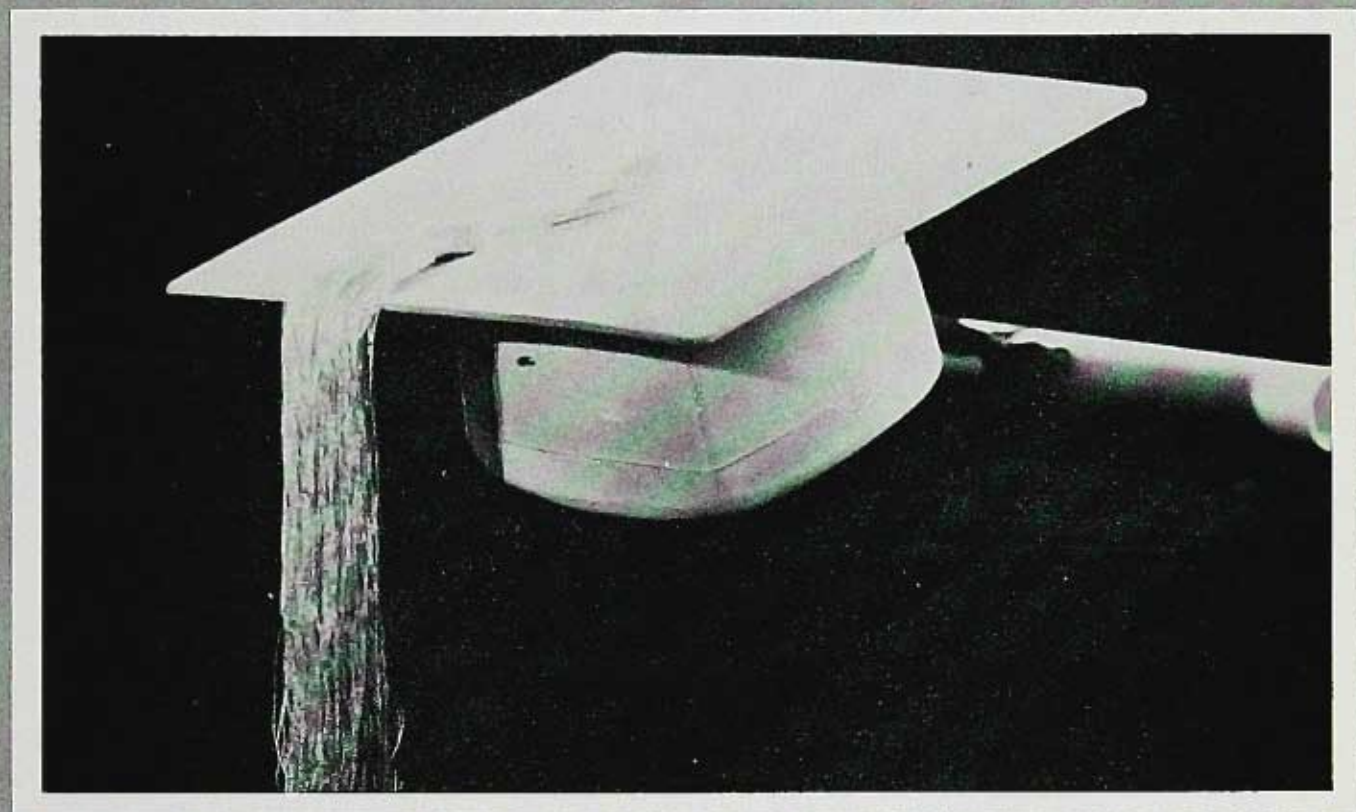
EUGENE VIVIAN, M.A.



THE OLD

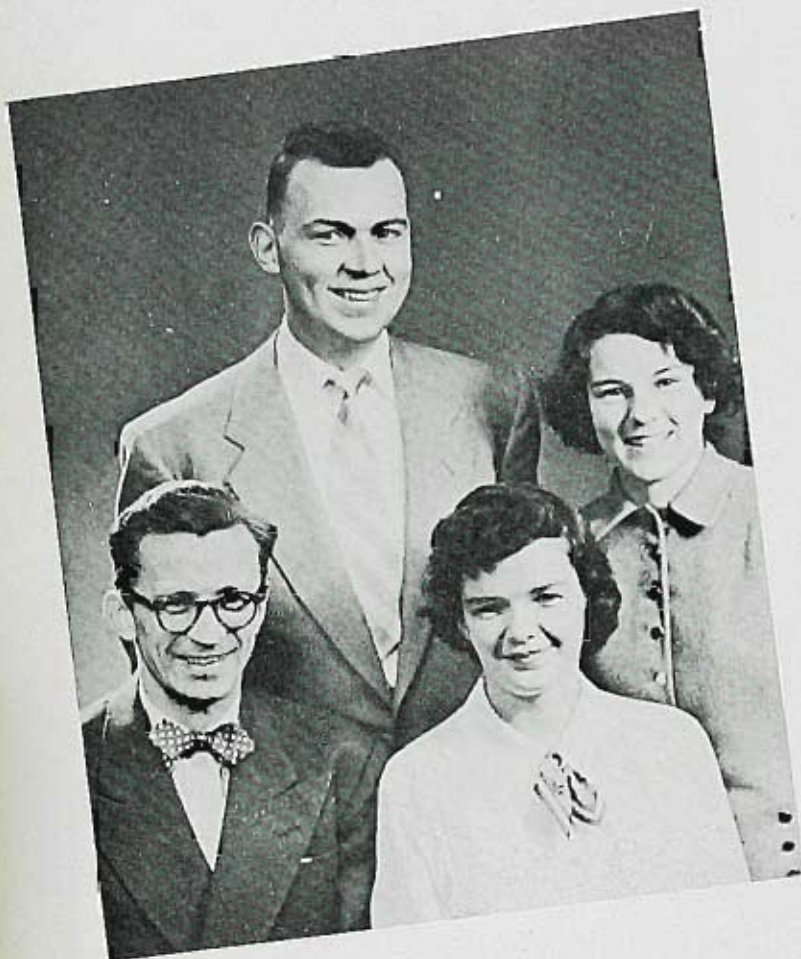


THE NEW



SENIORS

CLASS OFFICERS



PRESIDENT
Paul Nixon



VICE-PRESIDENT
Ann Lawlor



SECRETARY
Gladys Rice



TREASURER
Tom Olsen

Charles E. Abate
GENERAL ELEMENTARY



Evelyn Jane Ackerson
GENERAL ELEMENTARY
P & Q Club, 1,2; Beacon, 1,2,3; Paletters, 1;
Zeta Kappa Chi, 2,3,4; W.A.A., 1; Pioneer,
Art Staff, 4.

Marilen B. Albert
GENERAL ELEMENTARY





Virginia Ann Anzolut

KINDERGARTEN-PRIMARY

Women's Athletic Association, 1,2,3; Pro Kons, 2,3, President, 2; Student Government Association, 2; Red Cross, 4; Future Teachers of America, 4; Theta Delta Rho, 3,4; Pioneer, 4.

Jacqueline Anita Baker

GENERAL ELEMENTARY

Student Government Association, 1,2,3; Human Relations Club, 1,2; Masque and Masquers, 1; Red Cross, 1,2; P & Q Club, 1,2,3, President, 1,2; Cheerleaders, 1,2,3,4, Captain, 4; Zeta Kappa Chi, 1,2,3,4, Treasurer, 3; Beacon, 1,2; Pioneer, 4; Literary Editor, 4.



Arthur Jacob Balshan

BUSINESS EDUCATION AND
GENERAL ELEMENTARY

Photography Club, 1,2,3,4, Vice-President, 2, President, 3; Debits and Credits, 1,2,3,4; Beacon, Staff Photographer, 2,3.

Gloria A. Bevelacqua
KINDERGARTEN-PRIMARY

Swords Club, 1,2,3,4; P & Q Club, 1,2,3, Secretary, 2; Zeta Kappa Chi, 2,3,4, Secretary, 4; Beacon, 1,2; Red Cross, 2,3, Secretary, 3; Student Government Association, 4; Class Representative; Women's Athletic Association, 1; Future Teachers of America, 4; Masque and Masquers, 1, 2; Pioneer, 4.



Harriet Theda Black
BUSINESS EDUCATION

Debits and Credits, 1,2,3,4; Student Government Association, 1,2,3; Theta Delta Rho, 2,3,4; Beacon, 2.
Special Honors
Alternate Representative — The 2nd National Students Association Congress.

John Joseph Bonney
GENERAL ELEMENTARY

Phi Sigma Tau, 3,4; Science Club, 2,3,4; Student Government Association, 3, Class Representative.





Leo Lawrence Bonney
GENERAL ELEMENTARY
Phi Sigma Tau, 3,4; Science Club, 2,3,4; Junior
Class Vice-President.



Harold Book
GENERAL ELEMENTARY
Phi Sigma Tau, 2,3,4; Future Teachers of
America, 2; Debating, 3; Vice-President, 3; Pro
Kons, 3, President, 3.



Joan Ruth Borneman
KINDERGARTEN-PRIMARY
W.A.A., 1,2,3,4; Zeta Kappa Chi, 1,2,3,4. Treas-
urer, 2, Secretary, 3; Student Government Associ-
ation, 8; Beacon, Exchange Editor, 2,3; Outdoor
Education Club, 3; Future Teachers of America,
3,4; Pioneer, 4.

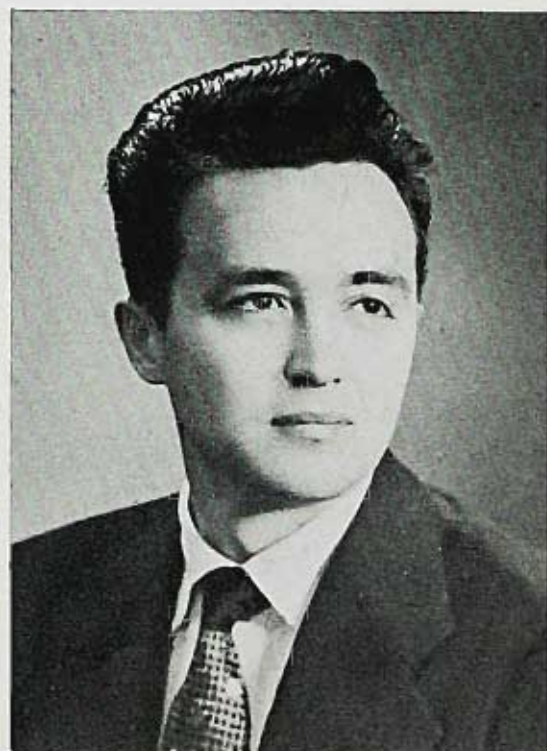
Robert H. Brand
 BUSINESS EDUCATION
 Basketball, 1,2; Debits and Credits, 2,3,4; Delta
 Omega Epsilon, 3,4; Bowling, 4.



Etta C. Briguori
 KINDERGARTEN-PRIMARY
 W.A.A., 1,2,3,4; Future Teachers of America,
 1,2,3,4; Librarian, 3; Historian, 4; Gamma Phi
 Lambda, 3,4; Pioneer, 4.



Roman Cabrera
 GENERAL ELEMENTARY





Thomas Joseph Cannito
GENERAL ELEMENTARY
Bowling, 2; Student Government Association,
1,2. Chairman. W.S.S.F., 2; Delta Omega
Epsilon, 3,4.



Henry Louis Capozzi
BUSINESS ELEMENTARY
Debits and Credits, 1,2,3; Student Government
Association, 3.
Special Honors
Pi Omega Pi; Kappa Delta Pi.



Margaret Rose Cappello
GENERAL ELEMENTARY
Women's Athletic Association, 1; Swords Club,
1,2,3,4; President — Inter-collegiate Women's
Fencing Association, 4; Science Club, 2; Masque
and Masquers, 2,3,4. Secretary, 3; A Cappella,
3; Beacon, 3.

Allen W. Carlson
GENERAL ELEMENTARY
Outdoor Education Club, 3; Intramural Basketball, 1,2,3.



Eleanor Mary Carr
BUSINESS EDUCATION
Debits and Credits, 1,2,3,4; Beacon, 2; Women's Athletic Association, 1,2; Student Government Association, 2; Student Co-operative, 2, Vice-president; Theta Delta Rho, 2,3,4.
Special Honors
Pi Omega Pi.

June Emelia Casaleggio
KINDERGARTEN-PRIMARY
Future Teachers of America, 1,2,3,4, Secretary, 4; Women's Athletic Association, 1,2; A Cappella Chorus, 1; Pioneer, 4.





Clare Tillman Citro
 KINDERGARTEN-PRIMARY
 Masque and Masquers, 1,2,3,4; P & Q Club, 2,3;
 Future Teachers of America, 3,4.



Mae Rose Conradi
 GENERAL ELEMENTARY



John Hamilton Corey
 Historian, 4; Science Club, 2,3,4; Geography
 Club, 3,4, Vice-president, 4; Future Teachers of
 America, 3,4; Phi Sigma Tau, 3,4, Historian 3,
 President 4.

Morris Corn
GENERAL ELEMENTARY
Beacon, 3, Poetry Editor, 3; Phi Sigma Tau, 2,3,4.



Mary Louise Cox
GENERAL ELEMENTARY
Women's Athletic Association, 1,2; Geography
Club, 2,3,4; Future Teachers of America, 4.

June Evelyn Daalder
KINDERGARTEN-PRIMARY
Phi Omega Psi, 1,2,3; Swords Club, 1,2, Manager
2; Beacon, 1,2,3, News Editor, 3; Human Rela-
tions Club, 1,2,3, Vice-president, 3; Inter-Varsity
Christian Fellowship, 2,3,4, President, 3,4; Future
Teachers of America, 4.
Special Honors
Kappa Delta Pi, 4.





Marion Gertrude Davis

KINDERGARTEN-PRIMARY

Women's Athletic Association, 1,2,3; Gamma Phi Lambda, 2,3,4; Beacon, 2,3, Co-exchange Editor, 3; Future Teachers of America, 3,4; Pioneer, 4.

Marlene Dietrich

BUSINESS EDUCATION

Debits and Credits, 1,2,3,4; Student Government Association, 1,2,3,4; Theta Delta Rho, 1,2,3,4, Treasurer, 2,3; Regional Secretary, New Jersey Region, National Students' Association, 3.

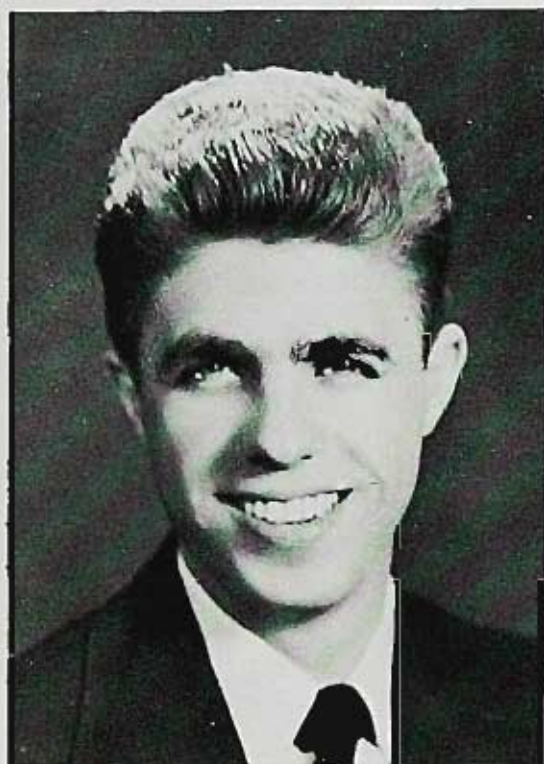


Joseph James Dorer

GENERAL ELEMENTARY

Bowling Team, 1,2, Secretary, 1; Skull and Poniard, 3,4; Outdoor Education, 3,4; Vice-president, 4; A Cappella, 3,4.

Kenneth B. Emont
 GENERAL ELEMENTARY
 Transfer from Rutgers University.
 Psychology Club, 2; Pro Kons, 2; Phi Sigma
 Tau, 2,3,4; Vice Chancellor, 2,3; F.T.A., 3.'



John Edward Fitzpatrick
 BUSINESS EDUCATION
 Transfer from Fairleigh Dickinson.
 Debits and Credits, 2,3,4; Varsity Bowling
 Team, 3,4.

John J. Flandrau
 GENERAL ELEMENTARY
 S.G.A., 2; Phi Sigma Tau, 3,4, President, 3,
 Vice-president, 4; Student Cooperative Associ-
 ation, 3,4.





Edna R. Frost
GENERAL ELEMENTARY
F.T.A., 2,4; Paletters, 2; Human Relations
Club, 3.



Antoinette F. Gaglione
GENERAL ELEMENTARY
Transfer from Trenton State Teachers College.
W.A.A., 2; Paletters, 2,3,4; F.T.A., 3,4, Presi-
dent, 3; S.G.A., 3,4; Student Faculty Relations
Committee, 3; Red Cross, 4; Geography Club,
3,4, President, 4; Pioneer, 4.



Rosalie Jane Garrabrant
GENERAL ELEMENTARY
W.A.A., 1,2; Recording Secretary, 2; Gamma
Phi Lambda, 2,3,4, Recording Secretary, 3;
Geography Club, 3,4, Recording Secretary, 4;
F.T.A., 3,4.

Mathilde Anna Glas

GENERAL ELEMENTARY

Transfer from Montclair State Teachers College.
W.A.A., 2; F.T.A., 2,3,4, Secretary, 2, Vice-president, 4; Geography Club, 4; Red Cross, 4.



Pauline Golfinos

KINDERGARTEN-PRIMARY

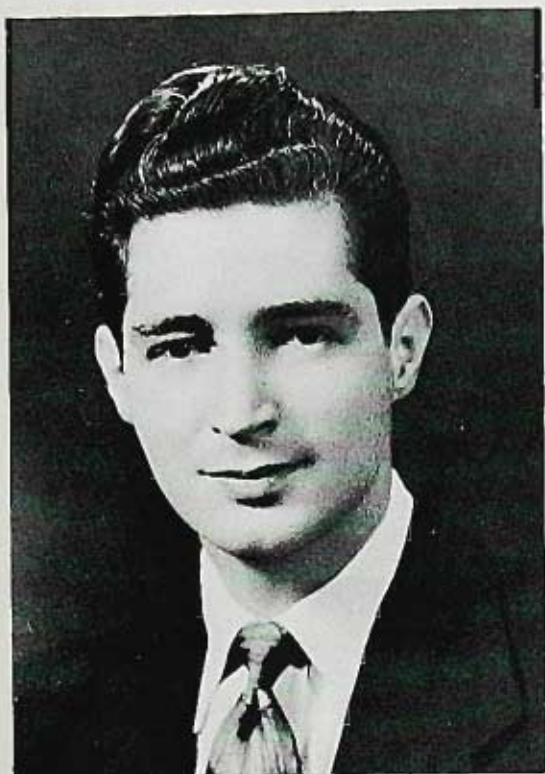
Beacon, 1,2; Pioneer, 4; F.T.A., 4.

Helen Grembowiec

GENERAL ELEMENTARY

W.A.A., 1; Phi Omega Psi, 1,2,3,4.





Harold John Groendyk
 BUSINESS EDUCATION
 Debits and Credits, 1,2,3,4; S.G.A., 3; Masque
 and Masquers, 3,4; Delta Omega Epsilon, 3,4.
Special Honors
 Pi Omega Pi, 4.

Carole N. Grudin
 BUSINESS EDUCATION
 Debits and Credits, 1,2,3,4.



Lavinia B. Harmon
 GENERAL ELEMENTARY
 W.A.A., 1,2; F.T.A., 3,4; Geography Club, 3,4;
 Beacon, 3; Red Cross, 4; P & Q Club, 4.

Otto David Harris
GENERAL ELEMENTARY

Intra-Fraternity Council, 2; Varsity Club, 1,2;
Delta Omega Epsilon, 3, Corresponding Secretary, 3; Beacon, 2, Feature Editor, 2; Baseball Team, 2,3; Geography Club, 3,4.



Ethel Miriam Herman
GENERAL ELEMENTARY

W.A.A., 1,2,3,4; Gamma Phi Lambda, 1,2,3,4,
Vice-president, 2, Treasurer, 4; Class Secretary,
2; Beacon, 2,3,4; F.T.A., 4; Pioneer.

David Victor Hoitsma
GENERAL ELEMENTARY





Lois Mary Holterhoff
BUSINESS EDUCATION

Debits and Credits, 1,2,3,4, Corresponding Secretary, 2, Recording Secretary, 3,4; P & Q Club, 2.
Special Honors
Pi Omega Pi, 3,4.



Anthony A. Homcy
GENERAL ELEMENTARY

Fencing, 1,2,3; Outdoor Education Club, 3,4; A Cappella Chorus, 3,4; Madrigals, 3,4; Photography Club, 3,4; Beacon, 3,4; Bowling, 3,4; Male Chorus, 3,4; Delta Omega Epsilon, 3,4; Varsity Club, 4.



Riva S. Isaacs

GENERAL ELEMENTARY

Swords Club, 1,2; Pro Kons, 1,2; S.G.A., 1; W.A.A., 2; F.T.A., 3,4; Geography Club, 2.
Treasurer, 4.

Joseph Isch

GENERAL ELEMENTARY

Basketball, 1,2,3,4; Fencing, 1,2; Baseball, 1,2; Skull and Poinard, 1,2,3,4, Treasurer, 2; Art Club, 1; S.G.A., 2,3,4, President, 3; Student Faculty Relations Committee, Vice-president, 2; Wightman Debating Society, 2,3; Pro Kons, 2,3; Intra-Fraternity Council, 2; Bookstore, 2,3,4; A Capella Chorus, 4.



Rose Henrietta Jager

KINDERGARTEN-PRIMARY

W.A.A., 1; Theta Delta Rho, 2,3,4; F.T.A., 4; Pioneer.

Duncan A. Jamieson

GENERAL ELEMENTARY

Outdoor Education Club, 1,2,3; Masque and Masquers, 1,2,3,4; Fencing, 1; Basketball, 3; F.T.A., 3; Skull and Poniard, 3,4, Treasurer, 4.





Sam G. Jarkesy
 BUSINESS EDUCATION
 Debits and Credits, 2,3,4; S.G.A., 3.
Special Honors
 Pi Omega Pi, 3,4.



Dorothy Henrietta Jockish
 GENERAL ELEMENTARY
 Pro Kons, 1,2; W.A.A., 1,2; S.G.A., 3; F.T.A.,
 3,4; Red Cross, 4; Pioneer.



Gloria Ethel Johler
 KINDERGARTEN-PRIMARY
 W.A.A., 1,2; Theta Delta Rho, 2,3; F.T.A.,
 4; Pioneer.

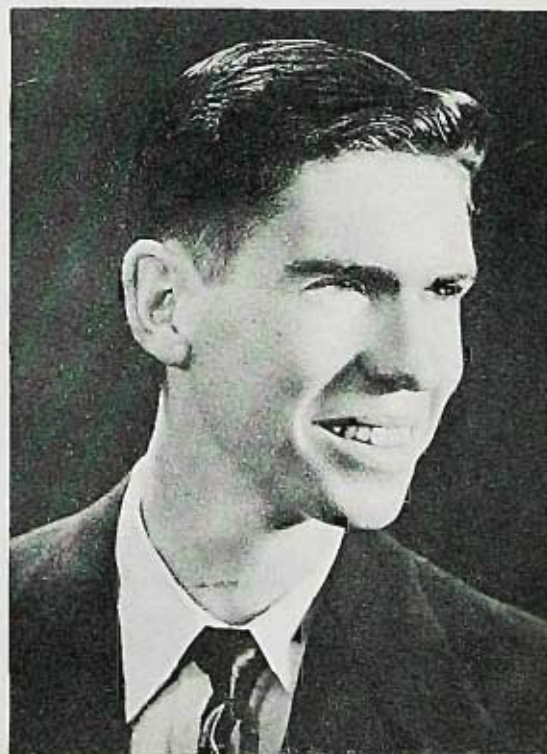
Doris Liepold Kadish
GENERAL ELEMENTARY
Transfer from Pratt Institute.
Science Club, 2.



Sydel Kaplan
GENERAL ELEMENTARY
Red Cross, 1,2,3,4, President, 2,3,4; Beacon, 2;
S.G.A., 2,3,4; F.T.A., 3,4; Geography Club, 4.



Thomas Francis Kennedy
GENERAL ELEMENTARY
Varsity Fencing Team, 1,2,3,4, Co-Captain, 3,4;
Swords Club, 1,2; Paletters, 1; Outdoor Education Club, 2,3,4; Varsity Club, 2,3,4; A Cappella Chorus, 3,4; Madrigals, 3,4; Male Chorus, 3,4; Skull and Poniard, 3,4; Beacon, 3; Pioneer, 4.





William Louis Knoll
GENERAL ELEMENTARY

Masque and Masquers, 1,2,3,4, President, 2;
Beacon, 2; S.G.A., 2; A Cappella Chorus, 3,4;
Male Chorus, 3,4; Madrigals, 3,4; Skull and
Poniard, 3,4, Custodian, 4; Outdoor Education
Club, 3,4.

Mildred Elaine Ladosz
BUSINESS EDUCATION

W.A.A., 1,2; Debits and Credits, 1,2,3,4; Pro
Kons, 1,2, Secretary, 2; Theta Delta Rho, 2,3,4;
S.G.A., 2; Class Secretary, 3; Student Coopera-
tive Association Secretary, 3,
Special Honors
Pi Omega Pi, 3,4, Secretary, 4; Kappa Delta
Pi, 3,4.



Ruth A. Layber
GENERAL ELEMENTARY

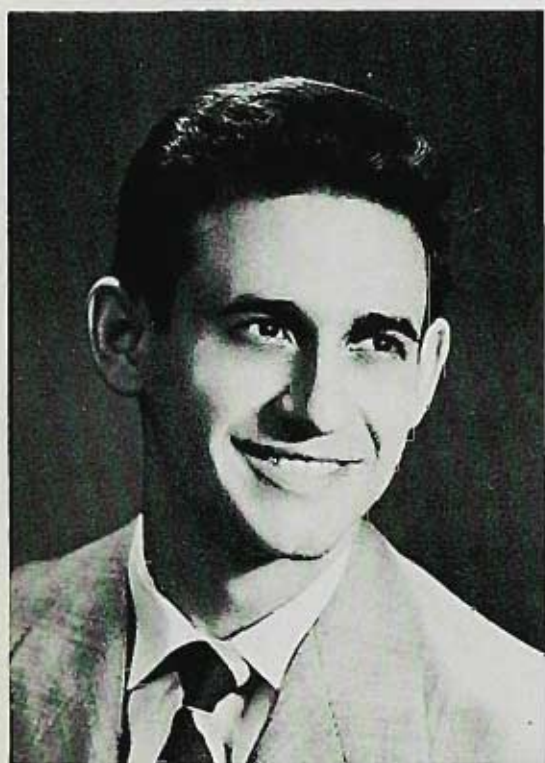
Transfer from Paterson General Hospital, School
of Nursing.
W.A.A., 2,3,4; P & Q Club, 2; Pro Kons, 3;
Phi Omega Psi, 4.

Ann Rose Lawlor
GENERAL ELEMENTARY

W.A.A., 1,2,3,4; Vice-president, 3; Gamma Phi
Lambda, 1,2,3,4; Secretary, 2; Beacon, 1,2,3,4;
Class Treasurer, 2; F.T.A., 3,4; Outdoor Educa-
tion Club, 3; S.G.A., 3; Class Vice-president, 4.
Special Honors
Who's Who Among Students in American Uni-
versities and Colleges.



Peter S. Ligeri
GENERAL ELEMENTARY
Psychology Club, 1; Outdoor Education Club, 3.



Harold Light
GENERAL ELEMENTARY
Psychology Club, 1; Science Club, 1,2,3; Debits
and Credits, 1,2; Human Relations Society, 1,2,3;
Male Chorus, 3; F.T.A., 4; Pioneer.





Marie D. Loof

GENERAL ELEMENTARY

W.A.A., 1,2,3,4, President, 3; Phi Omega Psi, 1,2,3,4, Corresponding Secretary, 3; Outdoor Education Club, 1,2,3,4; Photography Club, 1; Red Cross, 1,2,4; S.G.A., 3; F.T.A., 3,4.

Guy Lott, Jr.

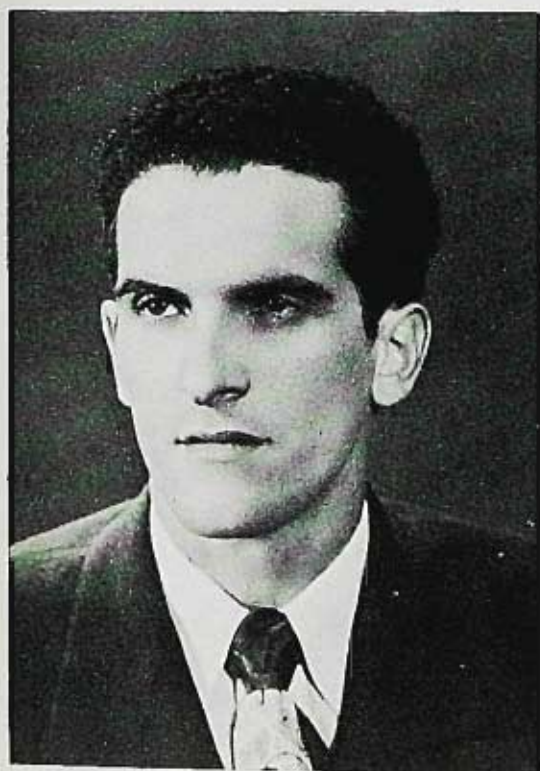
GENERAL ELEMENTARY

Transfer from West Virginia Wesleyan. S.G.A., 3,4; F.T.A., 3,4; Geography Club Vice-president, 2; A Cappella Chorus, 4; Paletteers, 2,3; Photography Club, 2,3; Delta Omega Epsilon, 2,3,4, Secretary, 3, President, 4; Beacon, 2,3,4, Feature Editor, 2, Associate Editor, 3; Class Historian, 3; Flashlight Associate Editor, 3; Pioneer Editor.

Special Honors

Who's Who Among Students in American Universities and Colleges, 4.

Beacon Poetry Award, First Place, 2,3; Skull and Poniard Honor Scholarship.



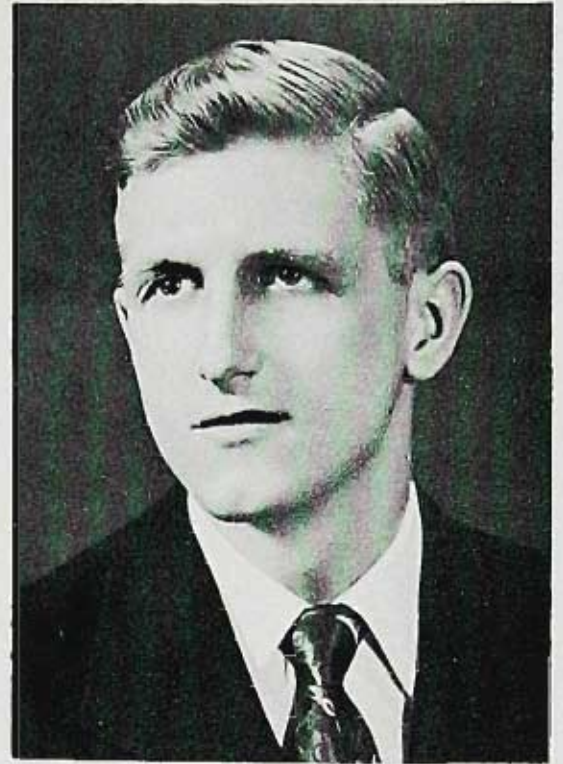
Pasquale James Maglione

GENERAL ELEMENTARY

Science Club, 2,3; A Cappella Chorus, 2,3,4.

Allan J. Maksimoski
GENERAL ELEMENTARY

Fencing Team, 1,2,3,4; Swords Club, 1,2; Human Relations Society, 2,4; Paletteers, 2; Varsity Club, 2,3,4; Debating Society, 3,4, President, 4; F.T.A., 4.



Dorothy Miskovsky
BUSINESS EDUCATION

P & Q Club, 1,2; W.A.A., 1,2; Gamma Phi Lambda, 1,2,3; Debits and Credits, 4.
Special Honors
Pi Omega Pi, 3,4.

Vincent Anthony Moretta
GENERAL ELEMENTARY

Varsity Club, 2,3,4; Varsity Basketball, 2,3,4.





Eileen Ann Murphy
GENERAL ELEMENTARY
Transfer from Bergen Junior College.
A Cappella Chorus, 3; Zeta Kappa Chi, 4.



Paul J. Nixon
BUSINESS EDUCATION
President, 4; Debits and Credits, 2,3,4. President,
3; Masque and Masquers, 3; College Advisory
Committee, 3,4.
Special Honors
Kappa Delta Pi, Pi Omega Pi, Who's Who
Among Students in American Universities and
Colleges.



Thomas N. Olsen
GENERAL ELEMENTARY
Treasurer, 4; Paletteers, 1,2,3, President, 2; Vice-
president, 3; Pro Kons, 1; Photography Club, 1;
S.G.A., 2,3; F.T.A., 3,4; Outdoor Education
Club, 3; Pioneer, 4; Skull and Poniard, 4.

James Herbert Pate
GENERAL ELEMENTARY

Transfer from Hampton Institute.
Basketball, 2,3,4; Baseball, 2; Varsity Club, 2;
Phi Sigma Tau, 2; Bursar, 3,4; S.G.A. Treasurer,
3; Vice-president, 4; Geography Club, 3; Inter-
Varsity Christian Fellowship, 4.
Special Honors
Who's Who Among Students in American Uni-
versities and Colleges.



June Perrius
GENERAL ELEMENTARY

Orsola Pillitteri
BUSINESS EDUCATION
Debits and Credits, 1,2,3,4; P & Q, 2; Beacon, 2,3.





Elvera Judith Pizzarelli

GENERAL ELEMENTARY

W.A.A., 1; Science Club, 2; Swords Club, 2,3,4;
Masque and Masquers, 2,3,4, Treasurer, 3, Vice-
president, 4; A Cappella Chorus, 3.



Selma Reiss

GENERAL ELEMENTARY

Transfer from N.Y.U.



Robert Martin Resnick

GENERAL ELEMENTARY

Transfer from Seton Hall.
Human Relations Club, 4; F.T.A., 4.

Gladys Elizabeth Rice

GENERAL ELEMENTARY

Transfer from Muskingum College.
Outdoor Education, 3; Phi Omega Psi Sorority,
3,4; Beacon, 3; Class Secretary, 4; A Cappella
Chorus, 4.



Rose Theresa Rigoglioso

GENERAL ELEMENTARY

W.A.A., 1,2,3; Beacon, 1,2,3,4; A Cappella
1,2,3,4; S.G.A., 1,2; Gamma Phi Lambda, 1,2,3,4,
Vice-president, 2; Outdoor Education Club, 1;
Masque and Masquers, 2; F.T.A., 3,4; Geog-
raphy Club, 4.



Margarita Rodriguil

BUSINESS EDUCATION

Debits and Credits, 1,2,3,4; Corresponding Secre-
tary, 3; Beacon, 2; Flashlight-Typist, 3; S.G.A., 4.





Arlene Rubin
KINDERGARTEN-PRIMARY
Masque and Masquers, 1,2; Fencing, 1,2,3, manager, 3; Outdoor Education, 3; F.T.A., 3,4.

Selma Faythe Rubin
BUSINESS EDUCATION
Debits and Credits, 1,2,3,4.



Harriet Emily Sayre
GENERAL ELEMENTARY
W.A.A., 1,2; Pro Kons, 1,2,3; F.T.A., 3,4;
Pioneer, 4; Red Cross, 4; S.G.A., 4.
Special Honors
Kappa Delta Phi Honorary Society, 3,4.

Rose Marie Schmelzer

GENERAL ELEMENTARY

Transfer from Trenton State Teachers, 1.
W.A.A., 2,3,4; Class President, 3; S.G.A., 3,4;
Gamma Phi Lambda Sorority, 3,4; Beacon, 4.
Special Honors
Who's Who Among Students in American Uni-
versities and Colleges, 4.



Rita Schultz

GENERAL ELEMENTARY

Transfer from Montclair State Teachers, 1,2.
Red Cross, 4; F.T.A., 4; Geography Club, 4;
Pioneer, 4.



Gloria Shear

KINDERGARTEN-PRIMARY

W.A.A., 1,2,3; F.T.A., 3,4; Pro Kons, 1; Red
Cross, 4; Pioneer, 4.





Lois Marilyn Shull
KINDERGARTEN-PRIMARY
Class Treasurer, 1; Theta Delta Rho Sorority,
1,2,3,4; W.A.A., 1,2; F.T.A., 4.

Rose Mary Snyder
GENERAL ELEMENTARY
Pioneer, 4; Cheerleader, 4.



Joan Lucille Sturmdorf
GENERAL ELEMENTARY
Pro Kons, 1; Paletteers, 1; Photography Club,
1,2,3,4, President, 2, Vice-president, 3; Science
Club, 2,3,4; S.G.A., 2; Advisory Committee, 3,4.

Stanley Louis Szot
GENERAL ELEMENTARY

Transfer from Jersey City State Teachers College.
Student Government Association, 4; Geography
Club, 2,3,4; Paletteers, 3; Photography Club, 2;
Beacon, 4; Science Club, 2,3; Pioneer, 4.

Special Honors

Who's Who Among Students in American Uni-
versities and Colleges, 4.



Edward N. Taradyna
GENERAL ELEMENTARY

A Cappella Chorus, 2.



Donald T. Van Orden
GENERAL ELEMENTARY

Varsity Baseball, 1; Varsity Basketball, 1,2,3,4;
Outdoor Education Club, 1; Varsity Club, 1,2,3,4;
Skull and Pontard, 2,3,4.





Roger Williams Veenstra
GENERAL ELEMENTARY
A Cappella Chorus, 2,3,4; Male Chorus, 2,3,4;
Fencing, 3,4; Madrigals, 3,4; Intramural Sports.



Colette De Vecchis Vogel
BUSINESS EDUCATION
Debits and Credits, 1,2,3,4; P & Q, 2; Pi Omega
Pi Fraternity.



Lorraine A. War
KINDERGARTEN-PRIMARY
Fencing Team, 1,2,3,4, Captain, 2; W.A.A.,
1,2,3,4; Masque and Masquers, 1,2; P & Q, 1,2,3;
Beacon, 1,2,3; Swords Club, 1,2,3,4.

Joan Elizabeth Ward

GENERAL ELEMENTARY

W.A.A., 1,2,3; F.T.A., 3,4; Phi Omega Psi
Sorority; Geography Club, 3,4.



David Edward Weidlick

BUSINESS EDUCATION

Varsity Baseball, 2; Debits and Credits, 2,3,4;
Beacon, 3,4; S.G.A., 3,4; Skull and Poniard, 2,3;
Pi Omega Pi Honorary Fraternity, 3,4, Treas-
urer, 3.



Patricia Ann Whipple

W.A.A., 1,2; Masque and Masquers, 1, Secre-
tary, 1; A Cappella Chorus, 1,2,3,4; Phi Omega
Psi Sorority, 1,2,3,4; Beacon, 2; S.G.A., 3; Mad-
rigals, 3,4; Outdoor Education Club, 3; Pioneer, 4.





George Joseph Williams
BUSINESS EDUCATION
Debits and Credits, 4.

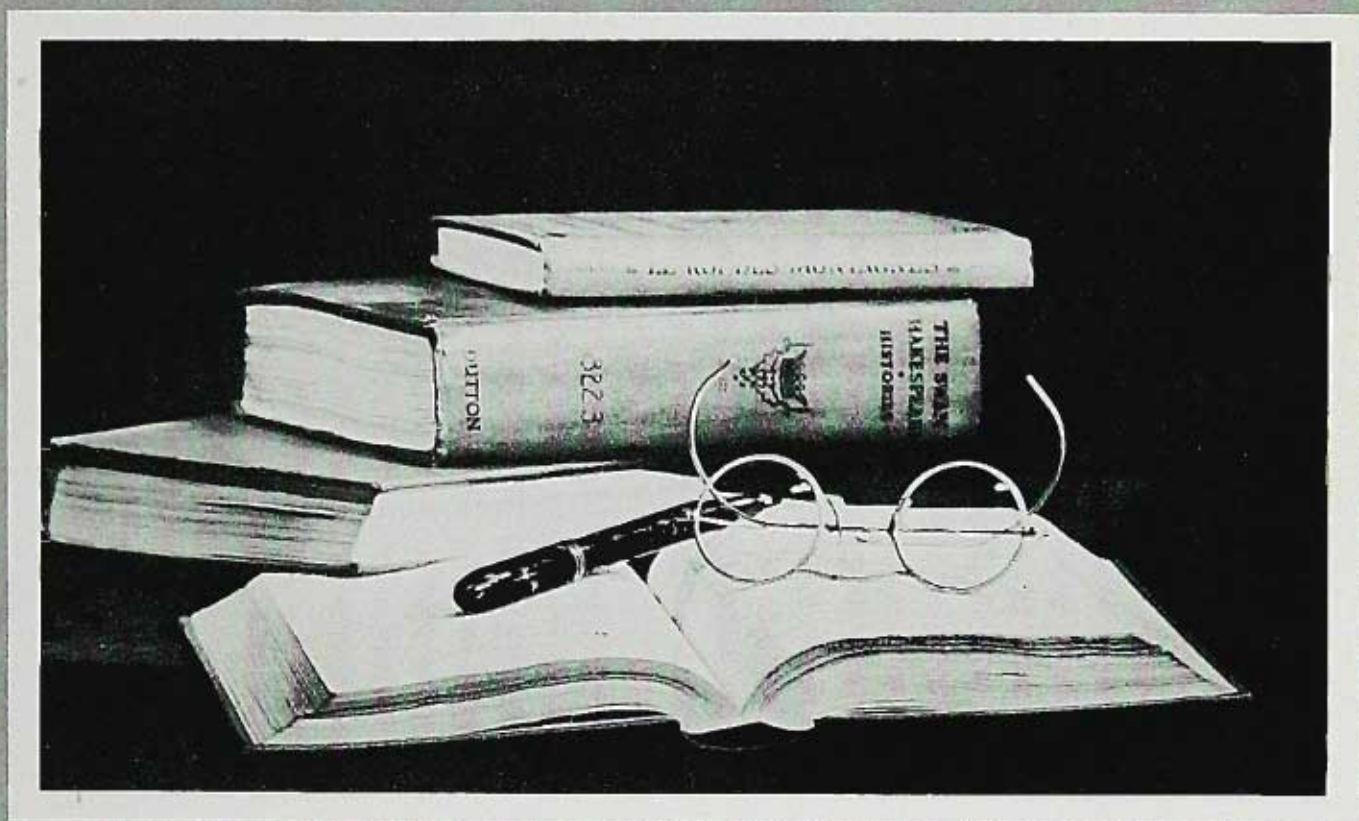


Thelma Bullock Williams
KINDERGARTEN-PRIMARY
Pro Kons, 2; F.T.A., 4; Red Cross, 4.



Barbara Joan Witte
GENERAL ELEMENTARY
W.A.A., 1,2; A Cappella Chorus, 1; F.T.A.,
Zeta Kappa Chi, 3,4; Geography Club, 4.

Carol Ferdon Gustavson
KINDERGARTEN-PRIMARY
Transfer from Glassboro State Teachers College.



UNDERCLASSES

JUNIOR CLASS OFFICERS



[58]

PRESIDENT
Kenneth Werner



TREASURER
Joe Boydell



JUNIOR CLASS

SOPHOMORE CLASS OFFICERS



PRESIDENT
Marcia Whipple



VICE-PRESIDENT
Joe Guerrera



SECRETARY
Janice De Korte



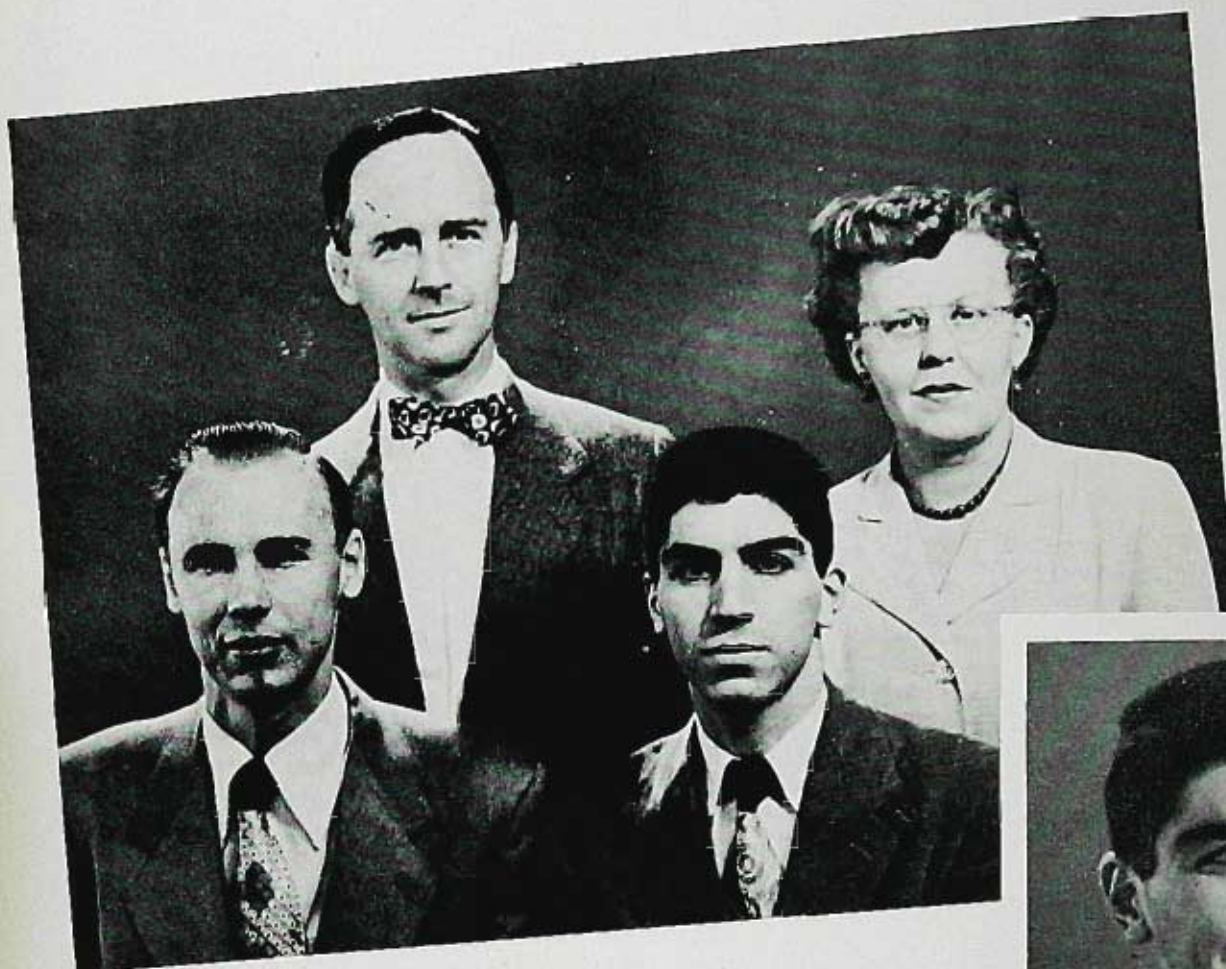
TREASURER
William Kline



SOPHOMORE CLASS



FRESHMAN CLASS OFFICERS



PRESIDENT
Samuel Scheber



[62]

VICE-PRESIDENT
Martin Walsh



SECRETARY
Winifred Hunt



TREASURER
Tom Desmond



FRESHMAN CLASS



ALMA MATER

Pioneers, with courage great
At our goals we point our way;
Toward them strong, inspired by State,
Ever loyal, ever gay.

Rally 'round our colors strong,
Sally forth in orange, black,
On to vic'try, do no wrong,
Never weaken in attack.

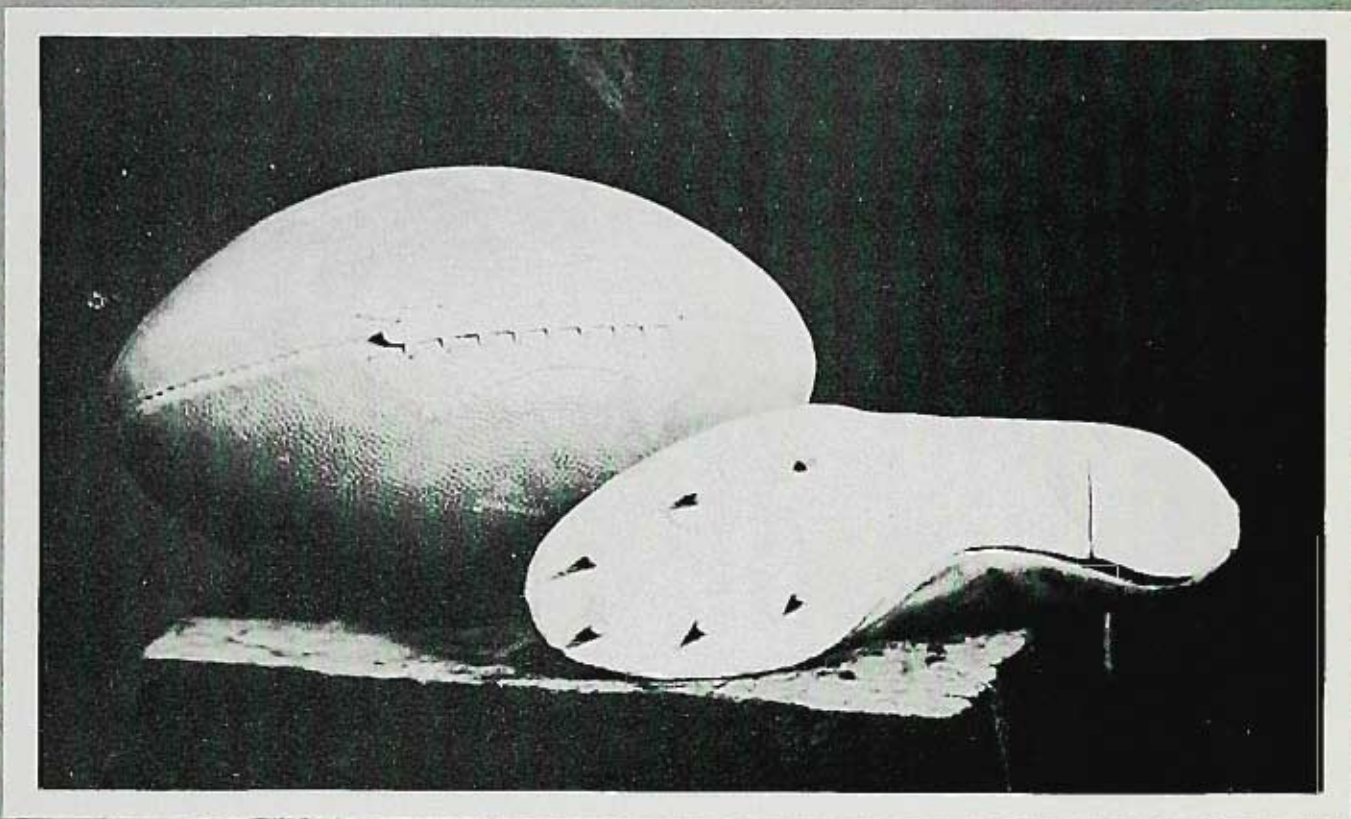
CHORUS

State, we pledge ourselves to you,
Thankful we each day renew
At your fountains, crystal clear,
Thought and action and good cheer,
Ever great our college dear,

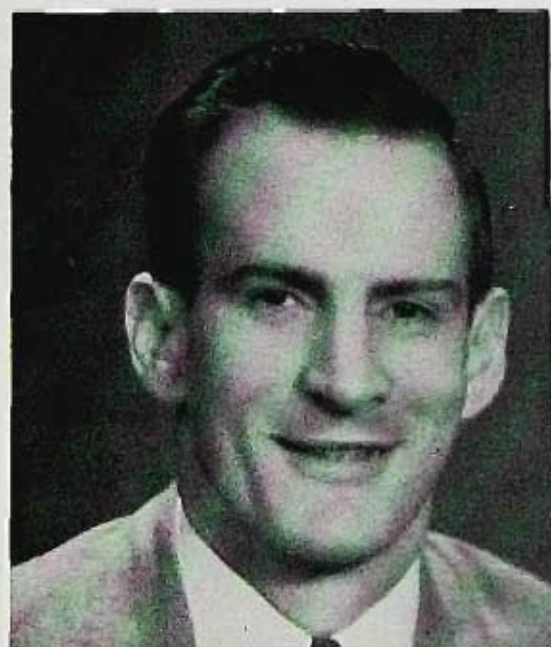
(Repeat last line)

Words by MARK KARP

Music by EARL WEIDNER



SPORTS



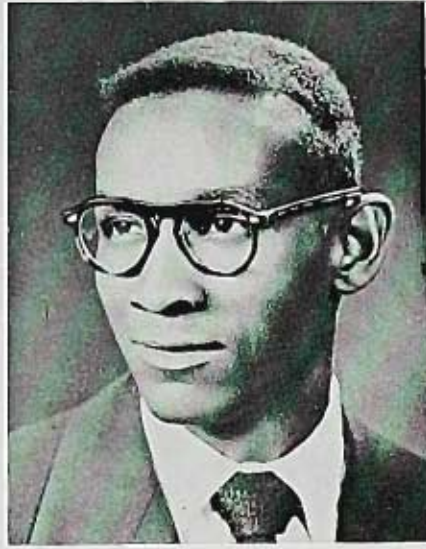
COACH ADDISON

BASKETBALL

SENIOR STARS



JOE ISCH



JIM PATE

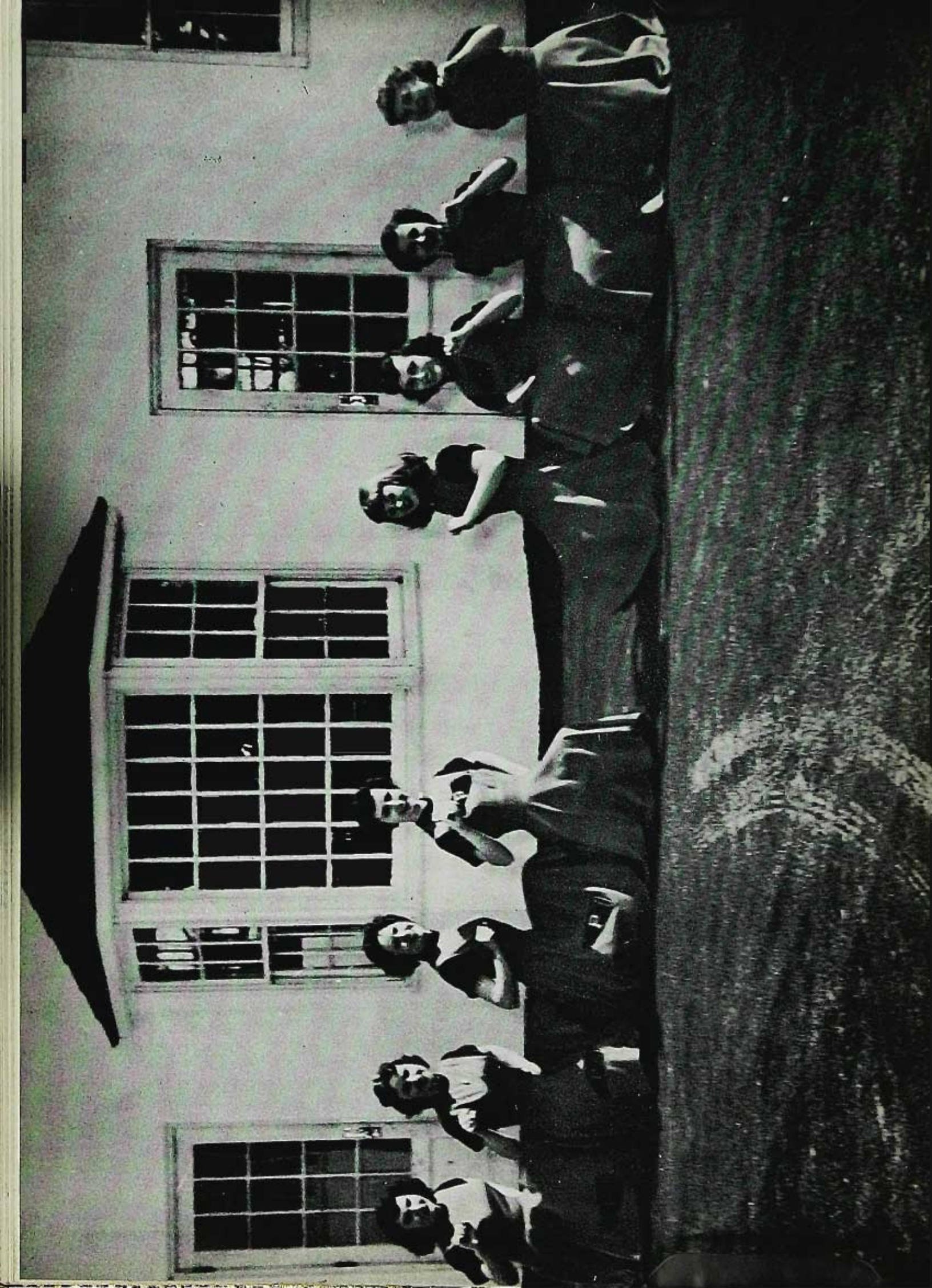


"DINK" VAN ORDEN

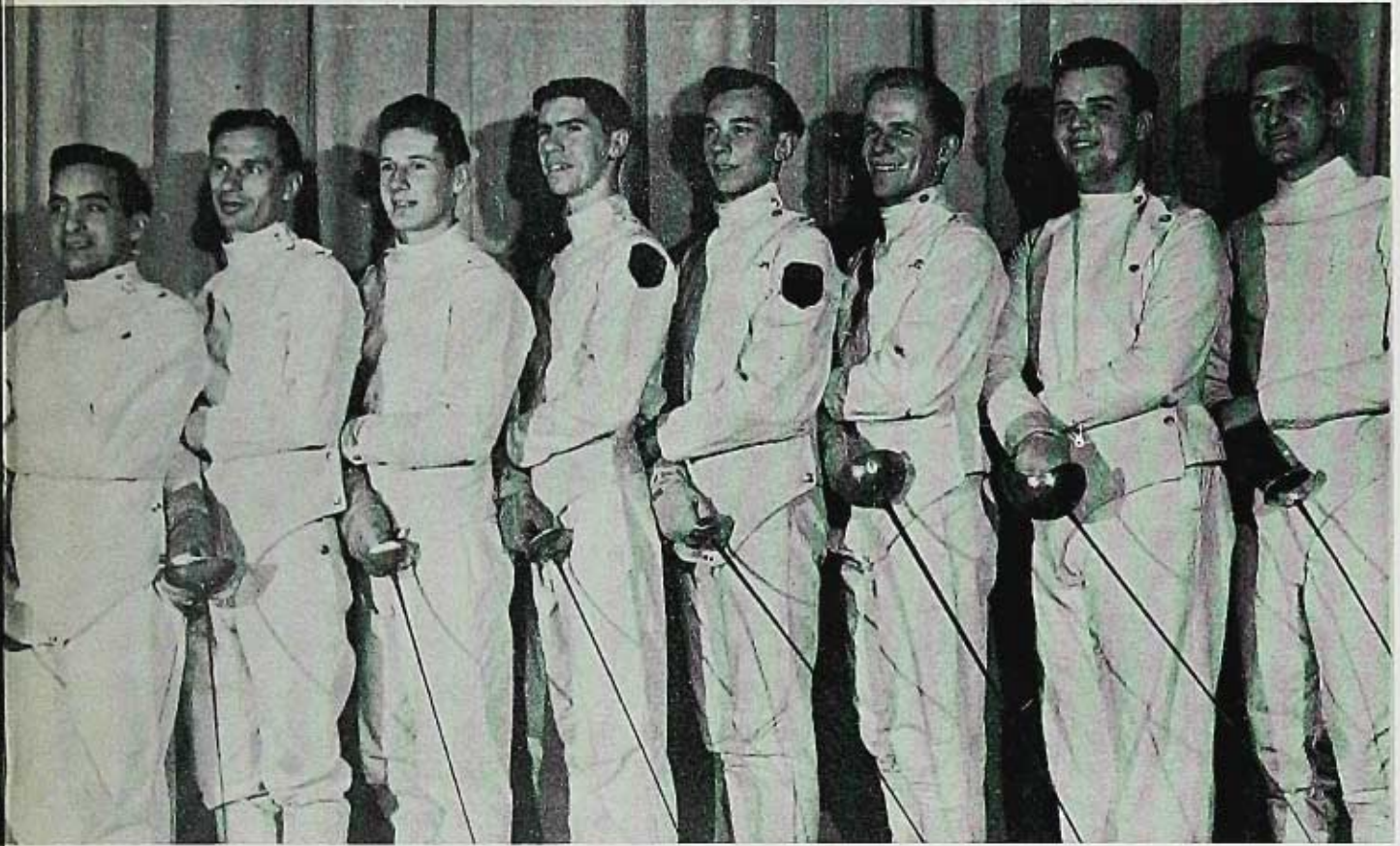


VINCE MORETTA

BROKE SEVEN STATE RECORDS



MEN'S FENCING



WOMEN'S FENCING





BOWLING



W. A. A.



COACH LEE



CHEERLEADERS

JACKIE BAKER
Captain



VARSITY CLUB



RAYMOND MILLER

ORGANIZATIONS

DEBITS AND CREDITS



DEBATING SOCIETY



GEOGRAPHY CLUB



HUMAN RELATIONS SOCIETY



MASQUE AND MASQUERS



THE HIGHNESS



PALATEERS



A CAPPELLA CHOIR



PHOTO CLUB



PRO KONS



SWORDS CLUB



SCIENCE CLUB



STUDENT GOVERNMENT ASSOCIATION



GEORGE AMEER
President

FUTURE TEACHERS OF AMERICA



TONI GAGLIONE
President



PIONEER STAFF



MISS STROOP
Adviser

STATE BEACON



MARJORIE BROMAN
Editor

FLASHLIGHT



KAPPA DELTA PI



WHO'S WHO IN AMERICAN COLLEGES AND UNIVERSITIES





QUEEN MEETS QUEEN

HUNZIKER HALL



THE QUEEN'S ATTENDANTS

RYE BEACH



RYE BEACH



MEMOIRS



Sophomore Hop



Sophomore Hop



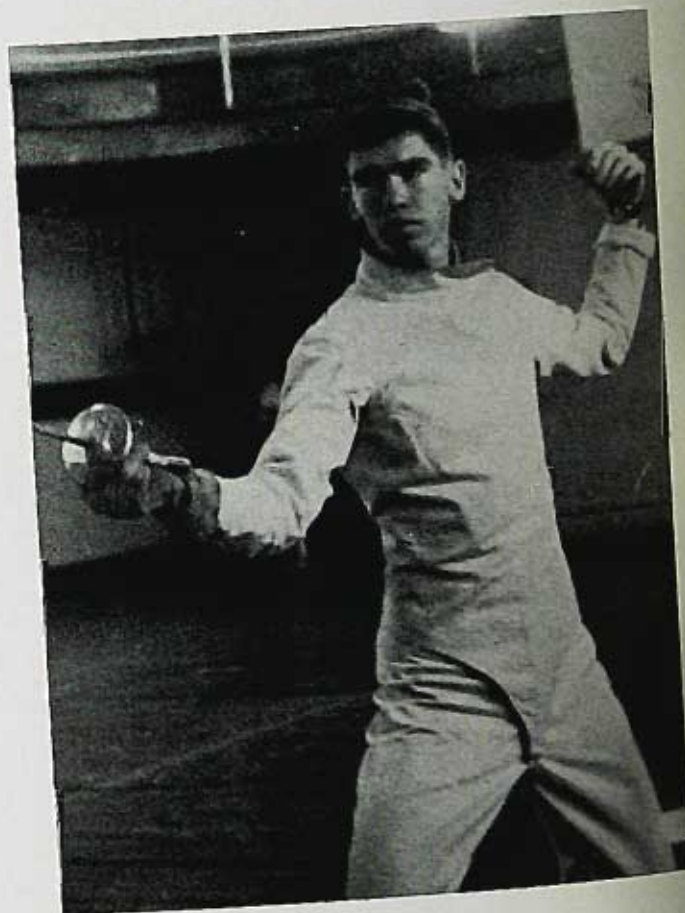
Mr. Califano



Health Class



Our Freshman Dance







Masque & Masquers



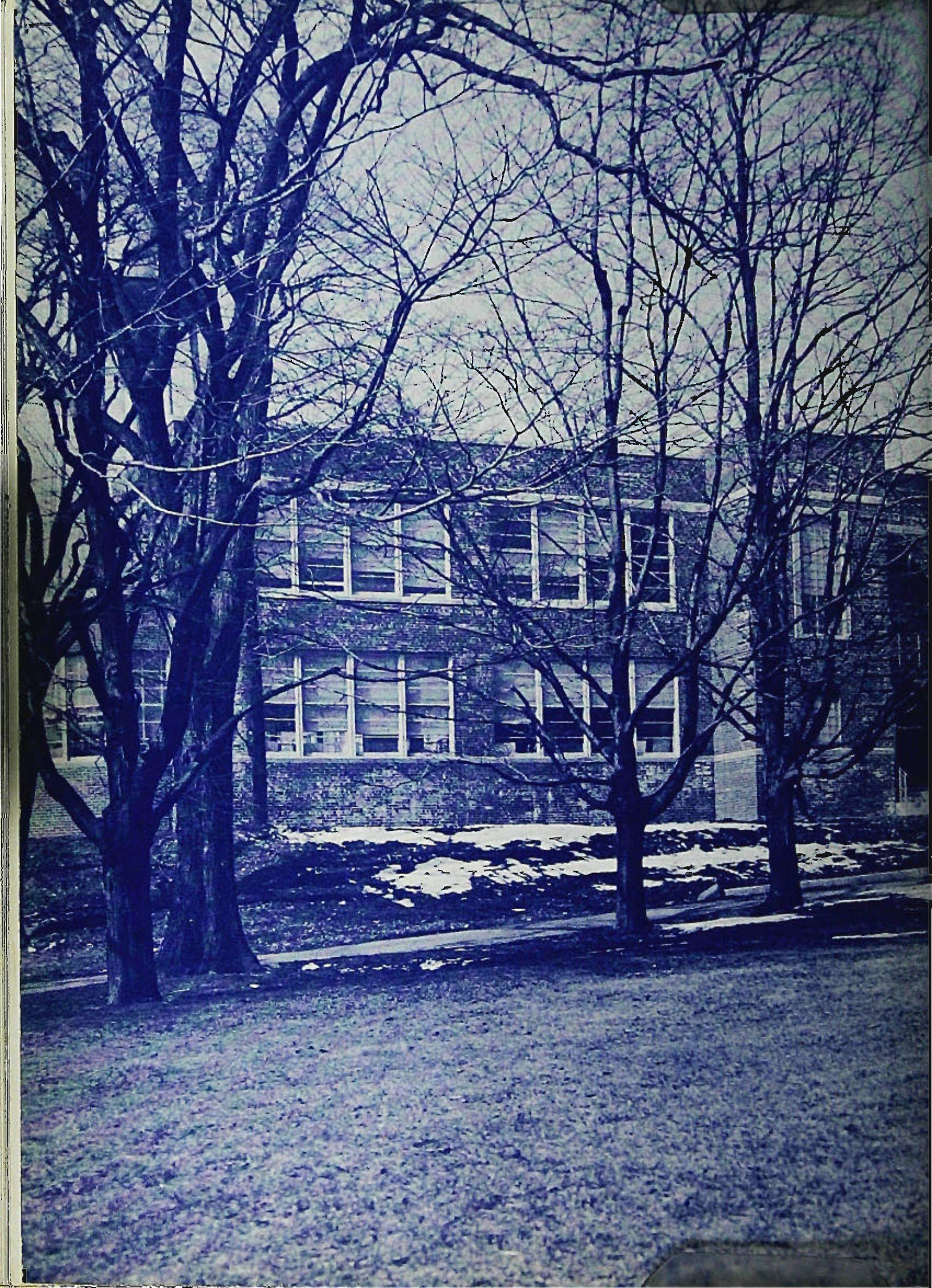
Shotgun Wedding





Bottoms Up





DOES
NOT
CIRCULATE

For Reference
Do Not Take
From the Library

WILLIAM PATERSON COLLEGE OF NEW JERSEY



3 3007 00563 9196



