

PIONEER

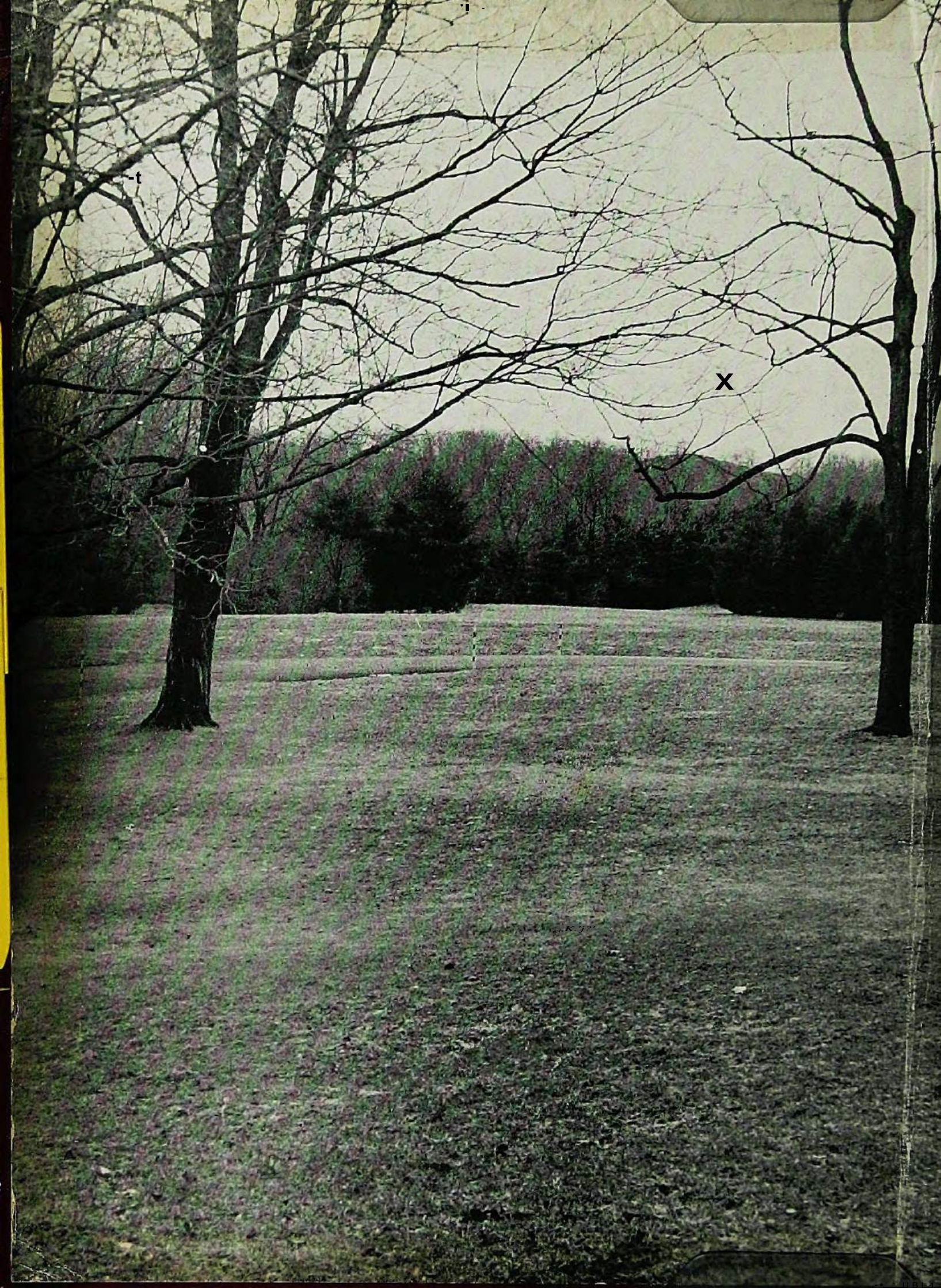
Col.
rsiz

5

0



50





With an supi on ihsi future . 9 .



JAc

1950

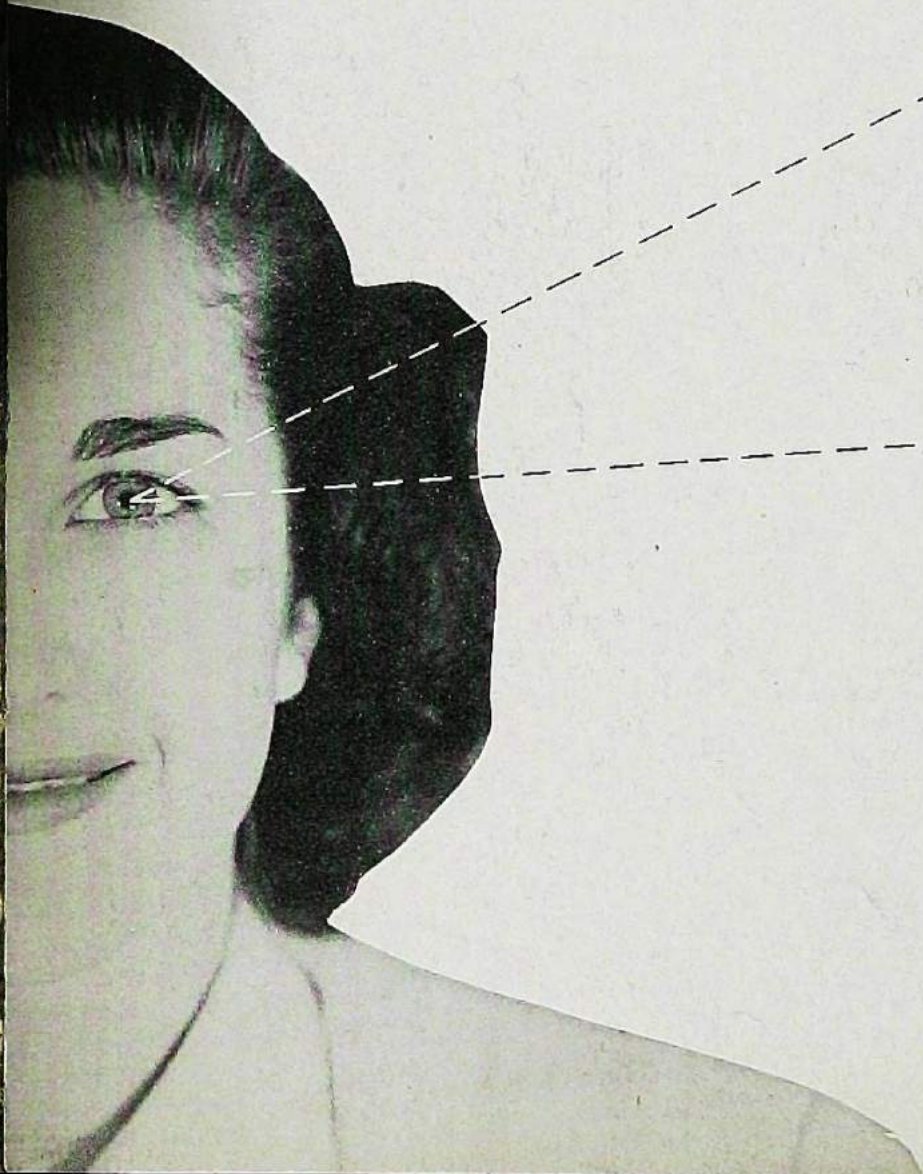
PIONEER

Published by the Senior Class

UH JERSEY STATE TEACHERS COLLEGE

AT PATERSON

Paterson, New Jersey



takes a LaAi lock hack



We, the class of 1950, being one of the last classes to graduate from this site of Paterson State, take this opportunity to pause and look back on the past and forward to the future. The halls of Paterson State will forever be the camping grounds of our memories of college days. Our future, as a class, lies outside the halls of this building or any future buildings of this Teacher's College. We sincerely hope that the students in years to come will wisely use all the facilities that are offered to them.



CONTENTS

. . . SENIORS



. . . UNDERCLASSMEN

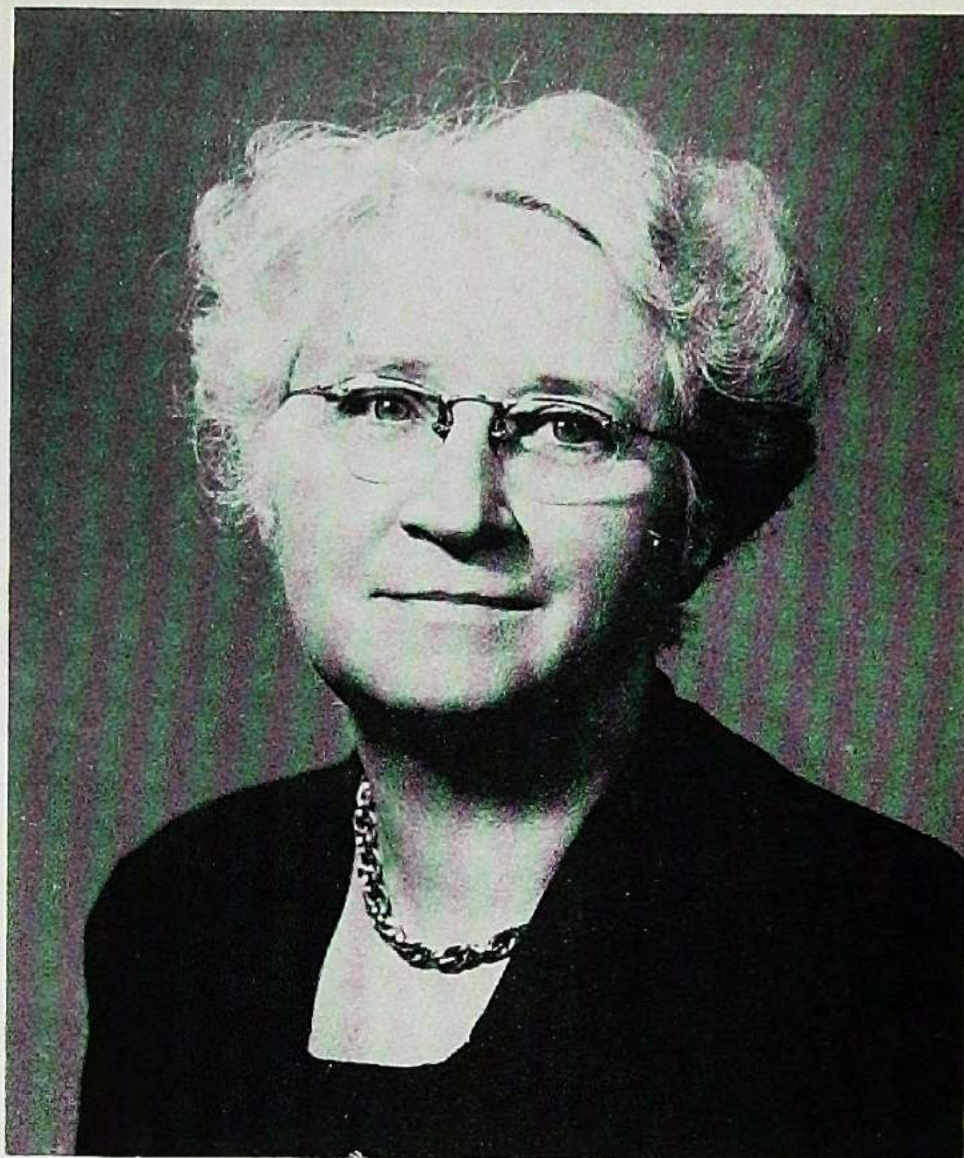


. . . ACTIVITIES



. . . SPORTS

.....



IS OUR WOMAN OF THE HOUR



After spending 25 years at Paterson State Teacher's College, a part of which was spent as Dean of Women, we, the Senior Class, feel it an honor to dedicate our yearbook to Miss Edith L. Jackson. Since her retirement last year, we have all missed her friendly smile as she so cheerfully hurried through these never-to-be-forgotten halls. The many conferences and favors that were so willingly given will never be forgotten by us. Of the many pleasant memories that we take away with us, hers will always be among the most cherished. Though words of thanks can never be adequately expressed, we will try to show our appreciation in the best way we know, by dedicating this, our 1950 PIONEER.



Clair S. Wightman

MESSAGE TO SENIOR CLASS

The theme of your yearbook, "From the Old to the New," is in harmony with the spirit that characterizes your Alma Mater as a pioneer institution. With your eyes fixed on the beauty of our new campus, you can overlook or fail to see the opportunity we are going to have to make innovations in our program. We must guard against the tendency to make the college halls havens of retreat from the problems that are most disturbing for mankind.

Education should concern itself with the problems that are most perplexing to man. It can be a most effective instrument in the promotion of peace. Are you ready for work of this kind? Are you ready to accept new responsibilities, to make changes, yes, even to sacrifice some of the traditions that may have become almost sacred with you?

Such is the assignment for the reformer, the leader in education today. Your Alma Mater will assist you in any way that it can, and it asks you to be ready to render a reciprocal service.

CLAIR S. WIGHTMAN,
President.

ARE FOCUSED AHEAD

As we enter the new



AS WE GO FROM THE OLD

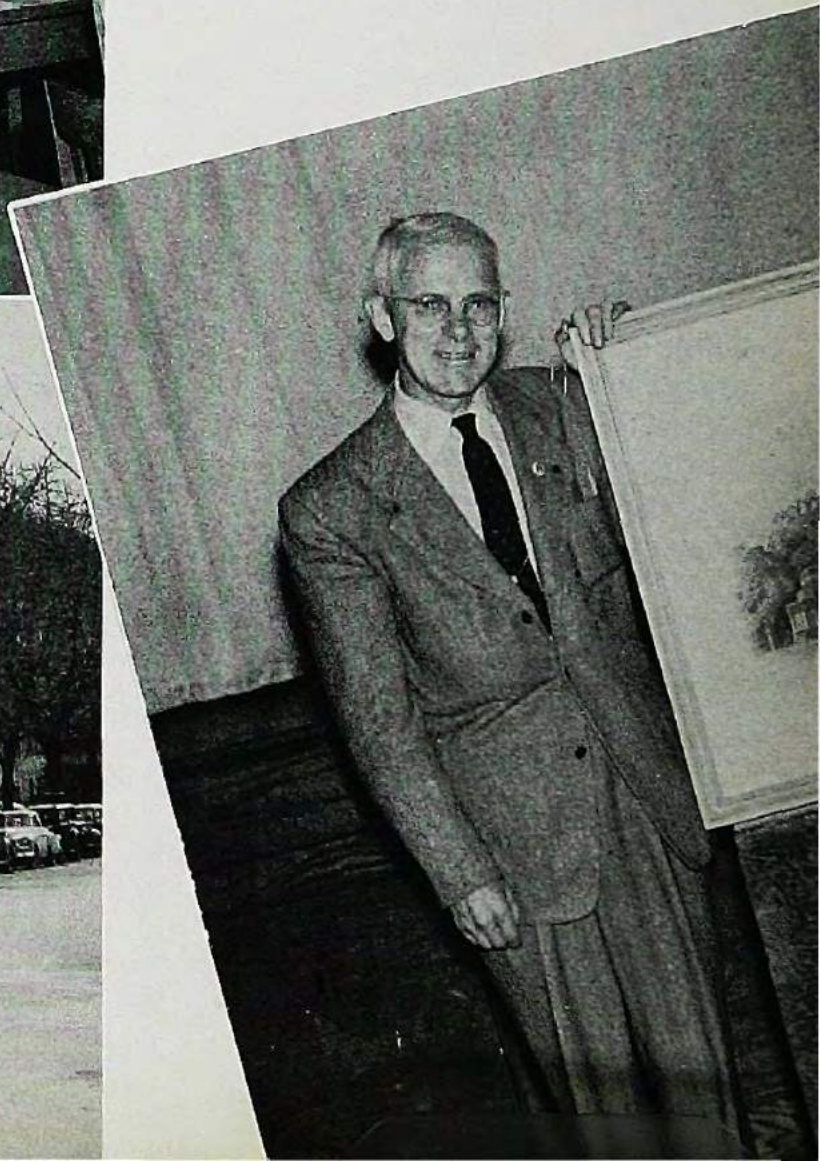
Gone, but never to be forgotten

Taking a last look



For years Paterson has longed for a new, modern building with a campus. The longed-for dream has finally become a reality. Yes, we say "good-bye to the old" and look forward to the "new,"¹¹ but with a bit of sadness accompanying our happy feeling. We wish the oncoming "Pioneers" the best of everything in their new home.

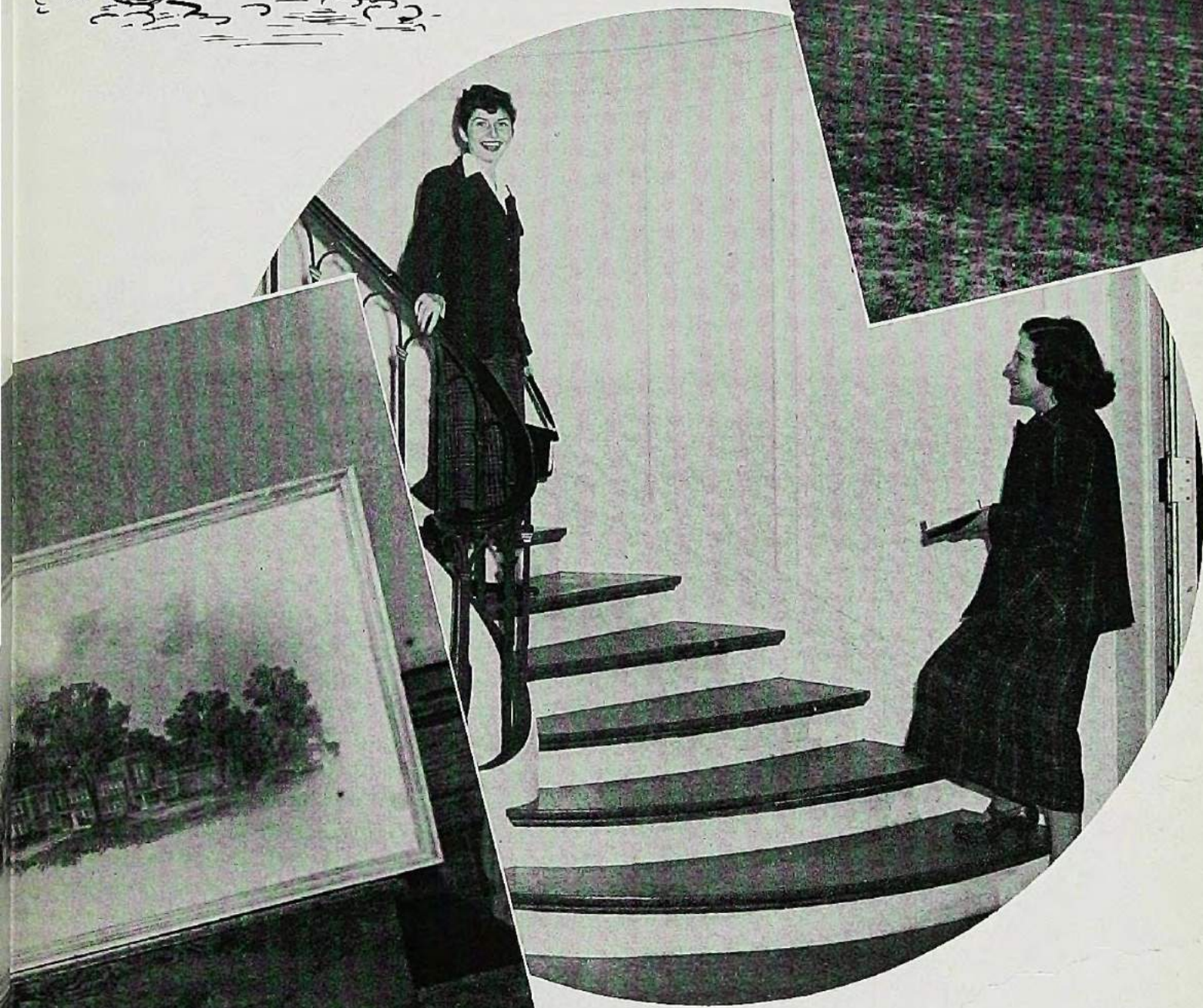
The happy father proudly presents his new baby.



TO THE NEW



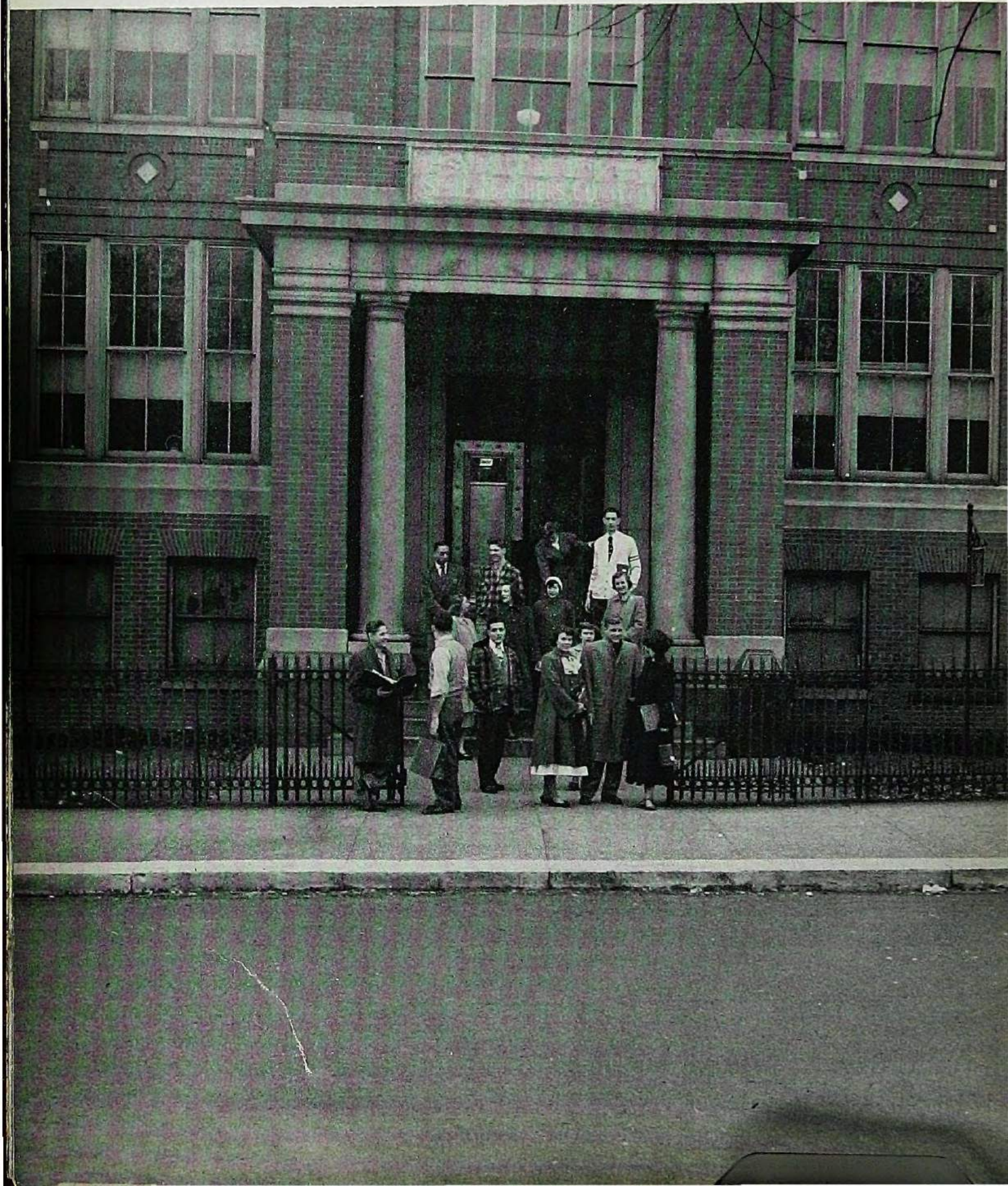
The best is none too good for State



Second to none.

WITH MEMORIES BUT NO REGRETS

As we leave the old





STANFORD
HENDRICKSON
M.Ed.

OLGA E. DOMBROWSKI
B.S.

M. EMILY GREENAWAY
M.S.

ROBERT A. ADDISON
B.A.

ELIZABETH M. RINALDI
B.S.

RAYMOND W. MILLER
M.A.

BENJAMIN MATELSON
M.A.

E. CHRISTINE STROOP
M.A.

FUTURE ACHIEVEMENTS

LOUIS C. NANASSY
M.A.

HEDWTG TREPKUS
M.A.

JULIETTE A. TRAINOR
B.A.

GORDON E. MATTHEWS
MA.

HAZEL PAULISON
B.S.

FRANCIS J. ZANFINO
B.S.

EARL L. WEIDNER
M.A.

NANCY ORDWAY COOK
M. A.



IRENE L. TALARSKI
B.S.



WHILE THE STAFF MAKES THE PRESENT RUN MORE SMOOTHLY



CAFETERIA STAFF

Ann Bentzinger, Emma Albinson,
Irene Talarski, Hugh Gilmore, and
John Zrypko.



LIBRARY STAFF

Elizabeth Rinaldt, Dorothy Abrams,
Juliette Trainor, Alice Mihleis, (Stand-
ing) Claire Tillman, Cathy Kennedy,
Julia Schmitz, Charlotte Bergan, and
Harvey Salzberg.



OFFICE STAFF

Marie Roegiers, Grace Lennon, Ger-
trude Gold, Isabell Boer, (Standing)
Adele De Winne, Alberta Cassells,
Joan Reed, and Lillian Adams.



BOOKSTORE STAFF

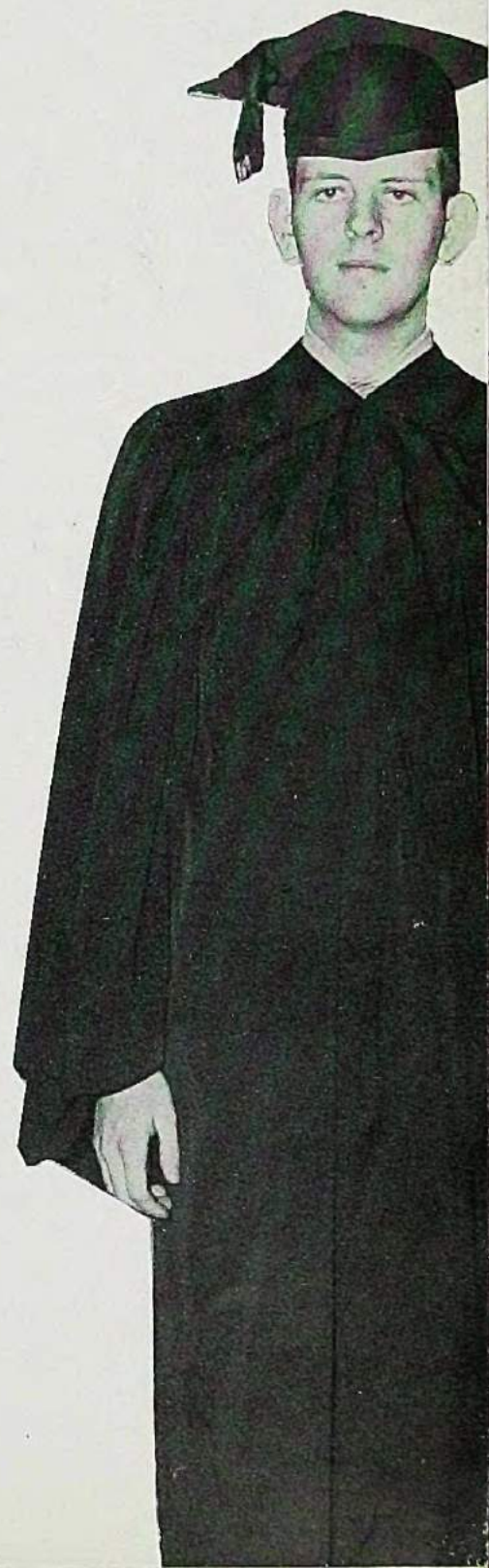
Don Edinger, Pete Wild, Bill Weisen-
horn, Don Levendowski, and Allen
Maksimowski.

y



From the Old to the New . . .

SENIORS



HZZX

THE PIONEER COMPARES TWO ERAS

There comes a time when words are not enough to adequately express a feeling of fondness and gratitude. I have been working with the staff and realize the untiring efforts you have so willingly put forth. Any way in which I try to thank you would be meager and insufficient. The only thing that I can offer is this, our yearbook, in hopes that it might comfort and appease you for the time and energy put into its being.

I thank you all in my humble way.

PETER J. WILD, Editor.



Dolores Paparozzi, Carrie Clark, Vivian Mio ciche, Ann De Spirito, Doris Murdock, Frances White, Phyllis Meli, Florence Semper, Richard Jarzembowski, Joseph Decker, Francis Orland, Regina Van Schaik, and Joan Sturmdorf.

Peter Wild, Editor; Richard Johnson, Assistant; Helen Pretko, Literary; Neva Houghtaling, Feature; Glen Leach, Sports; Evelyn Muller, Sports; Ethel Spierer, Art; Betsy McDertnott, Typing, and Olive Westa, Business Manager.

AS OUR CLASS OFFICERS COMBINE FOUR TALENTS

The senior class takes this opportunity to thank their well chosen guides, Doris Murdock, Al Dorcmos, Helen Pretko, and Dick Jarze-mbowski for all they have done for us.





BLANCHE ANDOUNIAN

K. P.

distinguished b» an admirable fervor in all undertakings . . .

mixed chorus , . . operetta . . . w.a.a. . . . vice-pres.—f.t.a. . . . vice-chairman—red cross . . . treas.—geography club . . . publicity chairman—assembly programs . . .

CATHERINE BECKER

K. P.

\ay . . . comely brunette , . . a. prevailing fay orite . . .

vice-pres.—freshman class . . . treasurer—s.g.a. . . . w.a.a. . . . basketball . . . sec.—zeta kappa chi . . .



DOROTHY ANN BERNHART

K. P.

sociable . . . fastidious . . . enigmatic personality . . .

w.a.a. . . . psychology club . . . f.t.a. . . . bowling . . . phi omega psi . . .

POLORES MARILYN BOSLAND

G. E.

maïd 0/ quiet ways . . . band-box loo\ . . . artistic . . .

w.a.a. . . . theta delta, rho . . . mixed chorus . . . outdoor ed. club . . .

SENIORS



JEAN BRUBAKER

K. P.

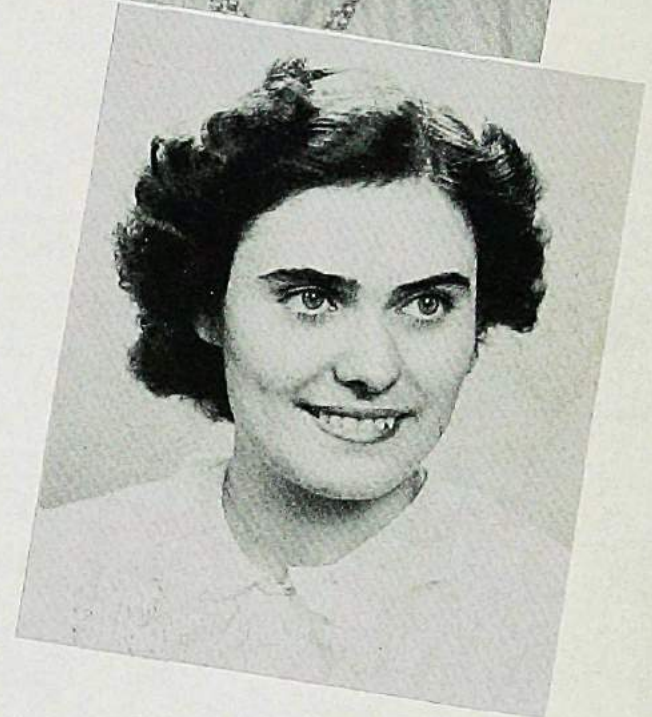
red . . . warm smile . . . sincere composure . . .
mixed chorus . . . sports club . . . vice-pres.—geog-
raphy club . . .



DOROTHY MARIE BYRNES

K. P.

for a thorough and exact job—loo^ t& "dotty" . . .
mixed chorus . . . f.t.a. . . . sec.—geography club
. . . , sec.-treas,—p and q . . .



SOPHIE CAVALLO

K. P.

gentle in manner . . . athletic . . . unrecognized
ability . . .
f.t.a. . . . w.a.a. . . . theta delta rho . . . p and q . . .

NORMA JANE CIRINELLI

B. E.

conscientious wor\er . . . accordionist . . . cheerful
nature . . .
vice-pres.—debts and credits club . . . phi omega
psi . . . p and q . . . mixed chorus . . . w.a.a. . . .



OF 1950



CARRIE THERESA CLARK

G. E.

*possessed with unrehearsed humor and a love for
physical activity . . .*
w.a.a. . . . theta delta rho . . . wilber force
college . . .



MARJORY JANE COLE

G. E.

*a depth of understanding, sincerity, and unselfish-
ness, concealed by a quiet exterior . . .*
f.t.a. . . . inter varsity Christian fellowship . . .
mixed chorus . . . w.a.a. . . . art club . . .

JOSEPH WILLIAM DECKER

B. E.

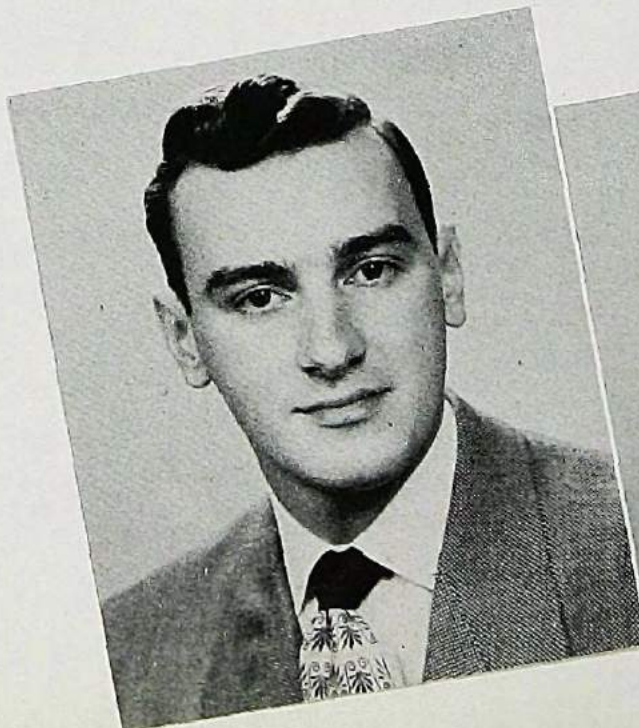
*vitality unlimited . . . serious in all contribu-
tions . . .*
pres.—debts and credits club . . . mixed chorus
. . . a cappella . . . world student service program
, . . . s.g.a. . . . bowling . . . yearbook staff . . .
who's who . . .

ESTHER DeGEETER

K. P.

*"susie" . . . good mixer . . . dependable and popu-
lar in every respect . . .*
outdoor ed. club . . . phi omega psi - . . . f.t.a. . . .
blackstone jr, college, Virginia . . .

SENIORS



CATHERINE THERESA DEL GUIDICE

G. E.

*natural manner that thrives on natural landscape—
her cats\ill mountain farm . . .
f.t.a. . . . geography club . . . w.a.a. . . .*



ANNA J. DE SPIRITO

B. E.

*personable . . . one of an amiable personality . . .
stylish . . .
debts and credits club . . . sec.—f.t.a. . . . masque
and masquers . . . theta delta rho . . . yearbook
. . . w.a.a. . . .*



JOHN DONALD

B. E.

*humorist of great renown . . . active and stirring . . .
pres.—s.g.a. . . . business manager—beacon . . .
debts and credits club . . . who's who . . .*

PETER DILEO

G. E.

*diligent in all details . . . favors laughter . . . worthy
of praise . . .
men's quartet . . . madrigals . . . mgr.—basketball,
baseball . . . operetta . . .*



OF 1950



ALBERT F. DOREMUS

G. E.

without a doubt . . . one good scout . . . distinguished senator , . . intelligentsia . . .
 pres.—senior class . . . masque and masquers . . .
 madrigal singers . . . outdoor ed. . . . flashlight . . .
 s.g.a. . . . mixed chorus . . . bowling club . . . who's
 who . . .

JOAN DOUGHERTY

K. P.

*unharried . . . intangible depth. . . . soft, feminine
 charm . . .*
 outdoor ed. club . . . mixed chorus . . . theta delta
 rho , . . w.a.a. . . .



DONALD D. EDINGER

G. E.

*intense interest in world affairs . . . "pop" . . . gen'
 ine personality . . . enthusiastic ideals accomplished
 . . . versatile . . .*
 baseball . . . varsity club . . . kappa delta pi (na-
 tional honor society in education) . . .

CAROLYN FANSLAU

K. P.

affable . . . lynn . . . radiant countenance . . .
 outdoor ed. club . . . f.t.a. . . . treas.—phi omega
 psi . . .

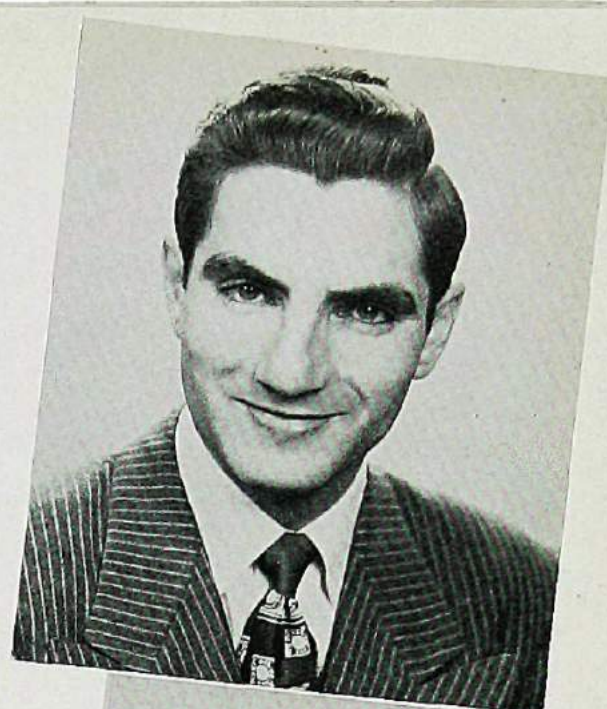
mums



DANIEL MITCHELL FROST

G. E.

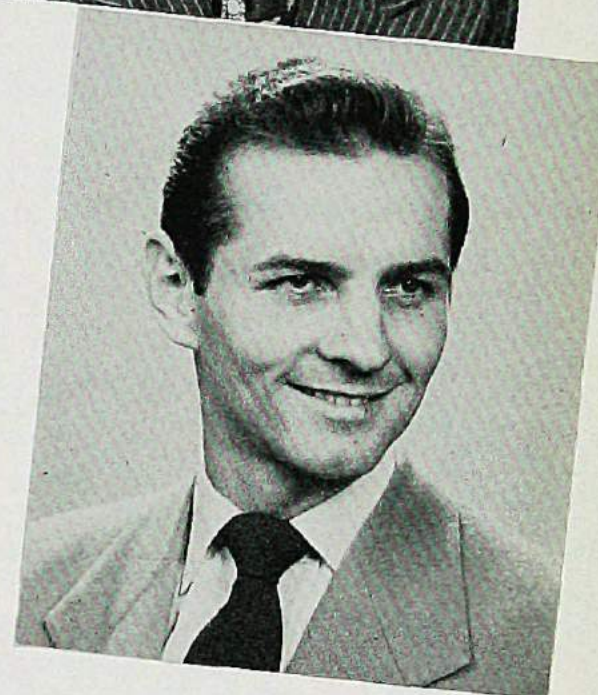
*bon-vi-uant . . . prompt in contrivance and manage-
ment . . . reserved . . . sauve . . .*
skull and poniard . . . yearbook staff . . . newark
coll. of eng. . . .



JOHN S. GREMBOWIEC

B. E.

*athletic . . . naturally disposed to humor and
cordiality . . .*
debits and credits club . . . a.a. , . . basketball . . .
yearbook staff . . .



CHARLES E. HIZETTE

B. E.

untty . . . accomplished pianist . . . studious . . .
mixed chorus . . . vice-pres.—debits and credits . . .
yearbook staff . . .

JOAN W. GROSS

G. E.

very close to perfection . . .
new jersey college for women . . .



OF 1950



NEVA MALISSA HOUGHTAUNG

G. E.

*efficiency exemplified . . . methodical . . . , enjoys
witticisms . . .*

f.t.a. . . . psychology club . . . palateers . . . w.a.a.
. . . theta delta rho . . . feature editor—yearbook . . .

RICHARD A. JARZEMBOWSKI

G. E.

*american legion politician . . . serene . . . car'
toonist . . .*

treas.—senior class . . . yearbook . . . mixed chorus
, , , debits and credits club . . . f.t.a. . . . skull and
poniard . . . vice-pres.—outdoor ed. . . , ,



RICHARD R. JOHNSON

B. E.

*clever . . . efficient . . . abounding in school
spirit . . .*

treas.—debts and credits . . . masque and masquers
. . . s.g.a. , . . athletic chairman . . . assist, ed.—
yearbook , . . skull and poniard . . . curriculum
comm . . . who's who among students in american
colleges and universities . . . Virginia university . . .

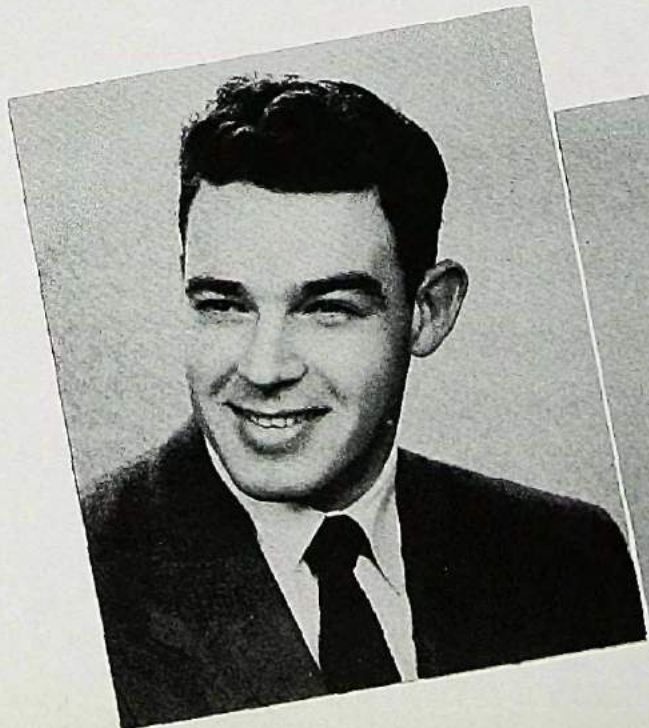
WINIFRED CATHEY JOHNSON

B. E.

genial . . . a friend to all . . . versatile . . .

treas.—sophomore class . . . mixed chorus . . .
debts and credits club . . . science club . . . vice-
pres.—theta delta rho . . . sec.—red cross . . .

SENIORS



THOMAS KERNAN

G. E.

*our boy from montana . . . shadow of seriousness,
tinge of cynicism . . . to be jim leach's boss . . .*

RICHARD MARTIN LASKOWICH

G. E.

*inimitable style . . . idealist . . . profound individual'
ist . . . poetic , . . subtle humor . . .
varsity club . . . tennis team . . .*

GLENN C. LEACH

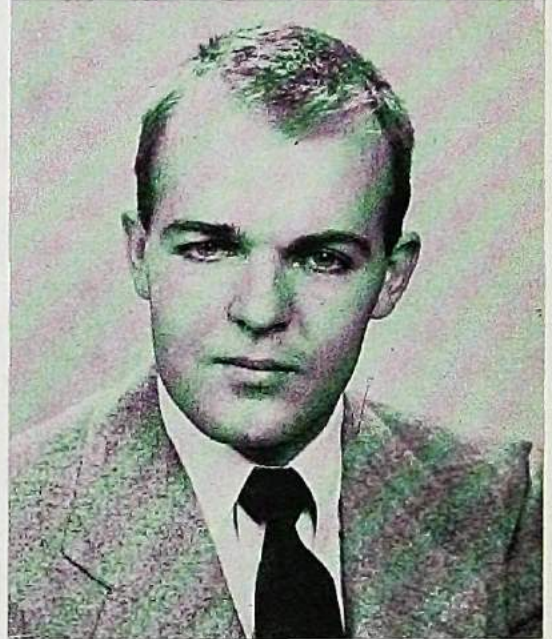
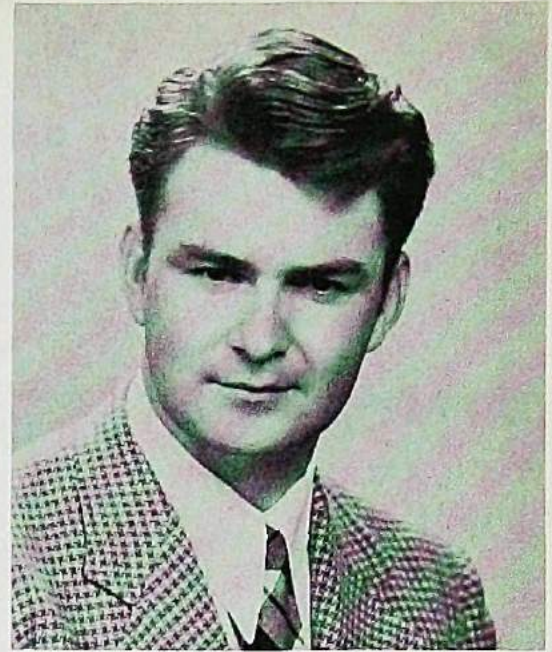
G. E.

*all around guy . . . nonchalant , , . emphasis on ath-
letics . . . popular . . .
basketball . . . tennis . , . bowling . . . vice-pres.—
junior class . . . beacon staff . . . sports editor—year-
book . . . varsity club . . . skull and poniard . . .
chess club . . .*

ZONA LA ZAR

B. E.

*sophistication . . . gentle disposition . . .
debts and credits club . . .*



OF 1950



JAMES F. LEACH

G. E.

*still water Tuns deep . . . hieroglyphic script . . .
bonhomie . . . caswell . . .
beacon staff . . . palateers . . .*



GLORIA LOUISE LECHLEITNER

G. E.

*practical . . . gracious personality . . . ability , . .
unassuming appearance . . .*

GEORGE ANTHONY LILL

G. E.

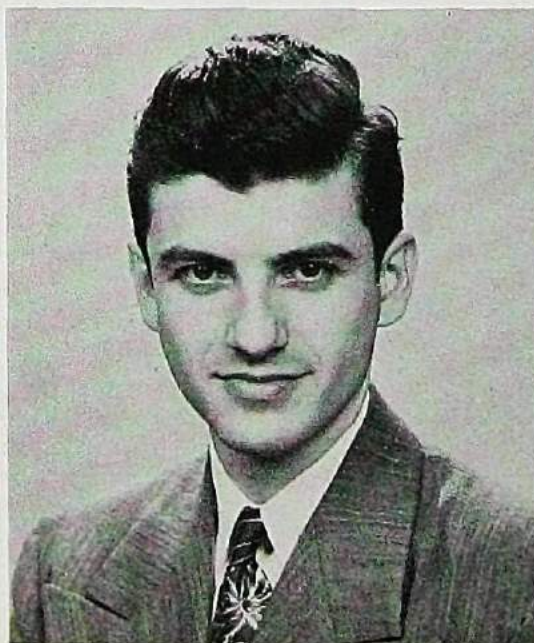
*serious undertones . . . thousand girls could not
charm him . . . marked compassion . . .
palateers . . . fencing . . . bowling . . .*

ROSE MANCY LOBOSCO

G. E.

*fashionable . . . savoir-faire . . . realist . . .
vitality . . .*

SENIORS



VERLE FREDERICK MacCULLOCH

G. E.

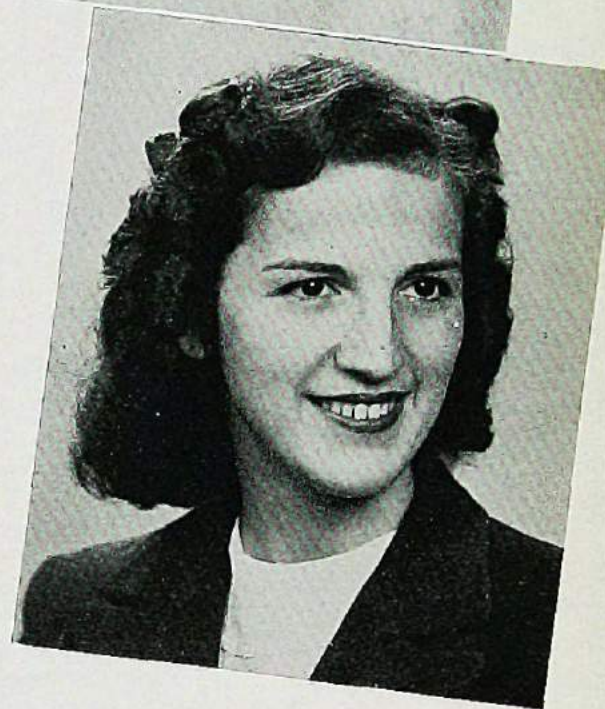
*sterling homemaker . . . pleasant manner . . .
dramatics . . .
transfer student . . .*



LOUISE MAIETTA

G. E.

*meticulous . . . , "corny jokes" . . . , sleepy manne-
quin . . .
f.t.a. . . . theta delta rho . . . bowling . . . roller
skating , . . s.g.a. . . . scholarship . . .*



VERONICA McCARRICK

G. E.

*blonde . . . chic , . . . quiet personality . . .
yearbook—art staff . . . phi omega psi . . .*

JAMES MAZZERINA

G. E.

*"penseroso and allegro" . . . informal . . . spon-
taneous witticisms . . .
madrigals . . . a cappella . . . masque and masquers
. . . chairman—senior show . . . outdoor ed. . .
beacon . . .*



OF 1980



BETSY JANE McDERMOTT

B. E.

*serene . . . sincere in all promises . . . studious . . .
demure . . .*

debts and credits club . . . p.s.t.c.s.c.a. trustee , . .
yearbook . . . kappa delta pi (national honor society
in education) . . .



EDITH McNEELY

G. E.

captivating soprano . . . friendly , . . energetic . . .
new york s.t.c. . . . mixed chorus . . . madrigals
. . . phi omega psi . . . a cappella chorus . . .
operetta , . .

PHYLLIS MELI

G. E.

fastidious . . . tranquil . . . easy companion . . .
theta delta rho . . . f.t.a. . . . w.a.a. . . . p and q
. . . geography club . . .

VIVIAN C. MICCICHE

K. P.

*petite in stature . . . a grin of fun and friendship
. . . one of many melodies and moods . . .*
montclair s.t.c. . . . phi omega psi . . . outdoor ed.
. . . a cappella 'choir . . . w.a.a. . . . yearbook
staff . . .

S EIVIO R S



RUTH MICHELSON

G. E.

*liberal toward others . . . firm expression . . . under-
standing friend . . .
brooklyn college transfer . . .*



EVELYN MULLER

G. E.

*versatile . . . a senior favorite . . . rippling laughter
. . . congenial . . . "buster" . . . ev and es . . .
women's sports editor—yearbook . . . pres.—w.a.a.
. . . outdoor ed. . . pres,—theta delta, rho . . . sec,
—s.c.a. . . . s.g.a. . . . f.t.a. . . . kappa delta pi
(national honor society in education) . . .*



RUTH NAROTSKY

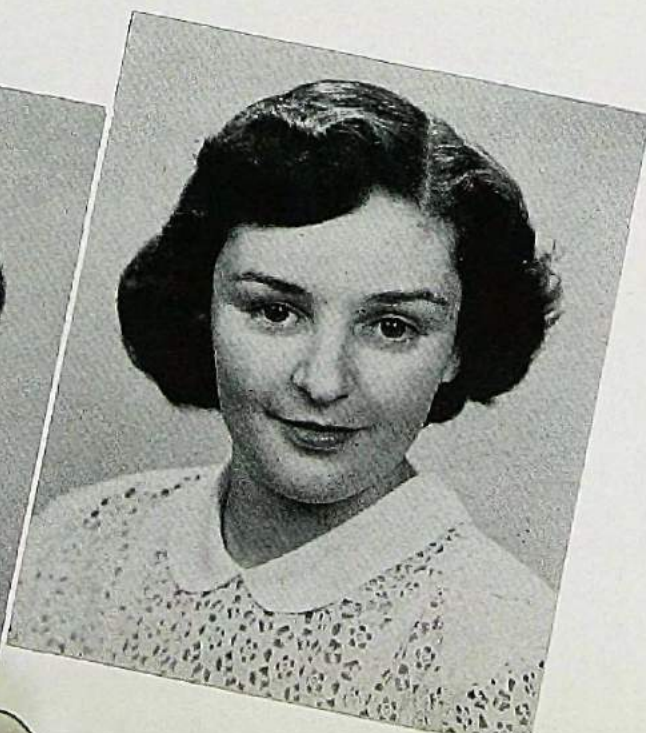
B. E.

*fastidious . . . comely lass . . . modest . . .
debts and credits club . . . yearbook staff . . . far-
leigh dickinson college . . .*

DORIS A. MURDOCK

B. E.

*industrious . . . cheerful contributions to class
activities . . .
debts and credits club . . . phi omega psi . . . sec.
—senior class , . . yearbook staff . . . who's who . . .*



OF 1950



DORIS NICKEIXS

K. P.

jest . . . efficient . . . rare personality . . . art . . .
pres.—phi omega psi . . . vice-pres.—art club . . .
masque and masquers . . . sec.—intra fraternity . . .

MARGARET O'LEARY

K. P.

all in fun . . . scintillating . . . ambitious . . .
peggy . . .
psychology club . . . sec.—sophomore class . . .
basketball . . . f.t.a. . . . mixed chorus . . . treas.—
w.a.a. . . . softball . . . zeta kappa chi . . .



FRANCIS B. ORLAND

B. E.

exuberant personality . . . reflective thought . . .
sec.—debts and credits club . . . mixed chorus . . .
a cappella choir . . . yearbook . . .

HELEN PRETKO

G. E.

natural in beauty . . . unruffled charm . . . jovial
and friendly to everyone . . . serious worker . . .
jersey city s.t.c. . . . vice-pres.—senior class . . .
literary editor—yearbook . . . theta delta rho . . .
w.a.a. . . . bowling . . .

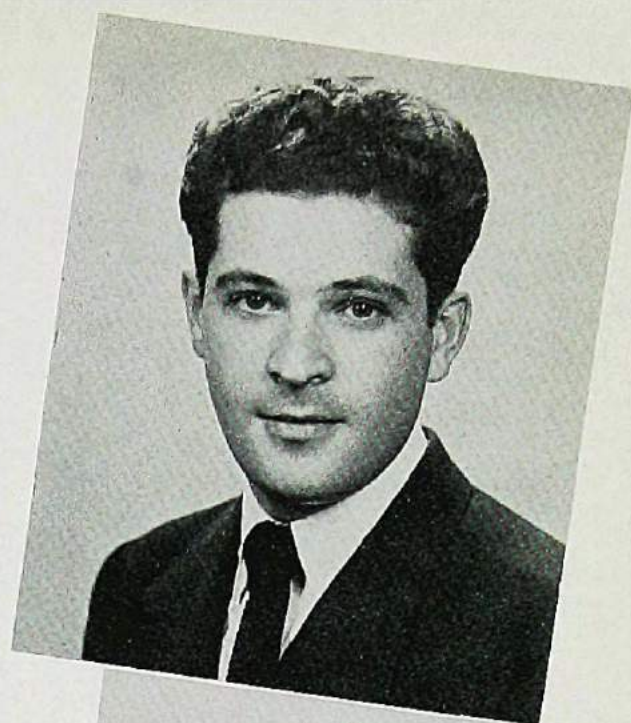
SENIORS



JAMES J. PESCATORE

G. E.

ingenuity with material creations . . . cherchez la femme . . . one universal smile . . .
 photography club . . . vice-pres.—paletteers . . .
 fencing . . . skull and poniard . . . social comra,
 . . . eastern arts member . . .



DARIO PIA

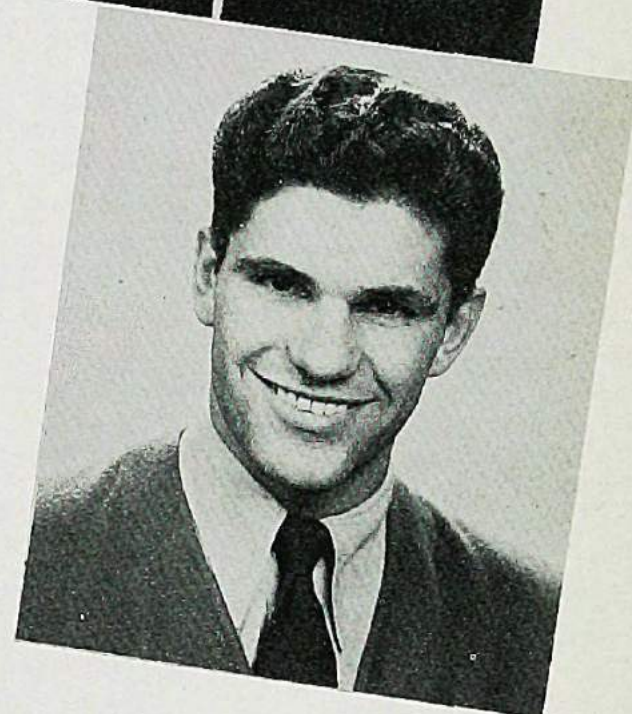
B. E.

imaginative . . . friendly . . . athletic abilities . . .
 basketball . . . varsity club . . .

DOLORES PAPAROZZI

G. E.

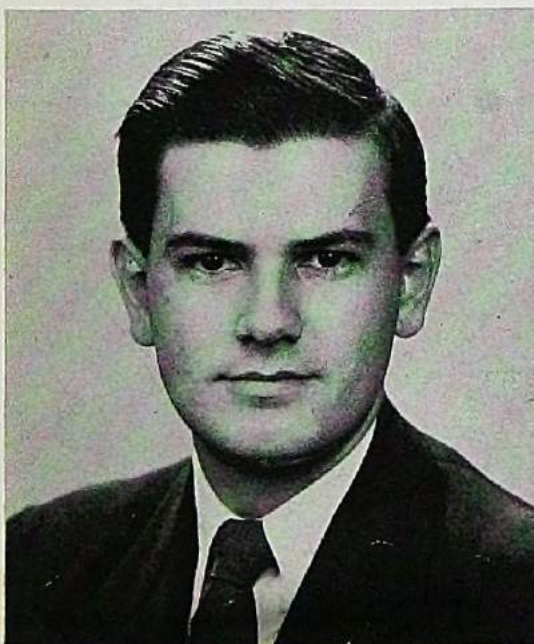
imaginative interpretations . . . festive spirits . . .
spontaneous contributions . . .
 editor of flashlight . . . p and q . . . vice-pres.-sec.—
 —gamma phi lambda . . . outdoor ed. club . . .
 mixed chorus . . . masque and masquers . . . f.t.a, . . .
 yearbook . . . a cappella.



LEE A. PITEA

G. E.

calm and gentle . . . fol\ music . . . beach comber
. . . ode to roorr Bl . . . sincere . . . congenial . . .
 pres.—masque and masquers . . . s.g.a. . . . chair-
 man—assembly corara. . . . skull and poniard . . .
 paletteers . . . treas.—intra fraternity , . .



OF 1950



DOROTHY CLARE REGAN

K. P.

dot . . . hospitable . . . po\\a queen . . . cheerful . . .
athletic . . .
w.a.a. . . . p and q . . . theta delta rho . . .



DORIS ROME REINHARDT

K. P.

well poised . . . confident . . . an aurora of
independence . . .
montclair s.t.c. . . . mixed chorus . . . w.a.a. . . .
outdoor ed. club . . .

KATHLEEN CLAIRE ROMANO

G. E.

"itty" . . . effervescent . . . fascinating . . .
dramatic . . .
w.a.a. . . . mixed chorus . . . f.t.a. . . . bowling
. . . s.g.a. . . . theta delta rho . . .

DOROTHY SCHURALICK

G. E..

"dot" . . . sparkling . . . sincere - . . . crossword
puzzles . . .
theta delta rho . . . w.a.a. . . . mixed chorus . . .
a cappella . . . sec.-treas.—nrutdoor ed. . . .

SENIORS



FLORENCE B. SEMPER

K. P.

flossie . . . a deserving winner in every outloo\ . . .
athletic . . .
fencing club . . . mixed chorus . . . f.t.a. . . .
operetta . . .

MARY CLAIRE SIETSEMA

K. P.

gay and cheerful . . . magnifico . . . conscientious . . .
madrigals . . . f.t.a. . . . mixed chorus . . . operetta
. . . theta delta rho . . .

REGINA MARIE SOCCI

K. P.

charming and gracious manner . . . unassuming in
details . . .
editor of flashlight . . . geography club . . .

WILMA BONNEMA SIKKEMA

G. E.

easy companion . . . refined . . . , modest of her own
merits and beauty • • •
cheerleader . . . mixed chorus . . . a cappella. chorus
. . . chairmar red cross . . . f.t.a. . . psychology
club . . .



OF 1950



ETHEL SPIERER

G. E.

accomplished *artist* . . . *wisdom combined with a desire for laughter* . . . , *active*: . . .

sec.—freshman class . . . phi omega psi . . . paleteers . . . f.t.a. . . . mixed chorus . . . sec.—treas.—outdoor ed. . . . p and q . . . , psychology club . . . w.a.a. . . . art editor—yearbook . . . curriculum comm. . . .

EDNA FRANCES STAUB

G. E.

pianist . . . "staubie" . . . ambitious to *achieve* . . . ,



GEORGE W. TAYLOR

B. E.

reserved . . . , *competent student* . . . *fishing enthusiast* . . . ,

debits and credits club . . .

ALICE BARBARA TUCH

G. E.

mixture of willing cooperation . . . , *friendly chatter* . . . , *abundance of fun* . . .

f.t.a. . . . w.a.a. . . . geography club . . . inter varsity Christian fellowship . . . p and q . . .

SENIORS



JEAN TUSA

G. E.

personality plus . . . *creative* . . . *competent* . . .
depth . . .

ft.a. . . . jr. red cross . . . w.a.a. . . . sec.—junior class
. . . , theta delta rho . . . s.g.a. . . . flashlight staff . . .



MARTIN UHLEMAN

G. E.

"bud" . . . *talented performance* . . . *aesthetic* . . .
retiring . . .

madrigals . . . s.g.a. . . . photography club . . .



FRANK VENTURO

B. E.

ah, a golden silence . . . *deep thought* . . .
debts and credits club . . .

REGINA NELLIE VAN SCHAİK

G. E.

delightful disposition . . . *intelligent* . . . *en-*
thusiastic . . .

w.a.a. - . . . mixed chorus . . . a cappella . . . outdoor
ed. . . . theta delta rho . . . yearbook staff . . .



OF 1950



THOMAS J. VERGA

B. E.

*warm personality . . . sober . . . careful . . .
responsive . . .
delta omega epsilon . . .*



MARGARET WARD

K. P.

*vivacious . . . philosophical . . . adept in fashion and
conversation . . .
s.g.a. . . . pub. manager—f.t.a. . . . geography club
. . . art club . . . alpha kappa alpha . . .*

CHARLIE MAY WEAVER

K. P.

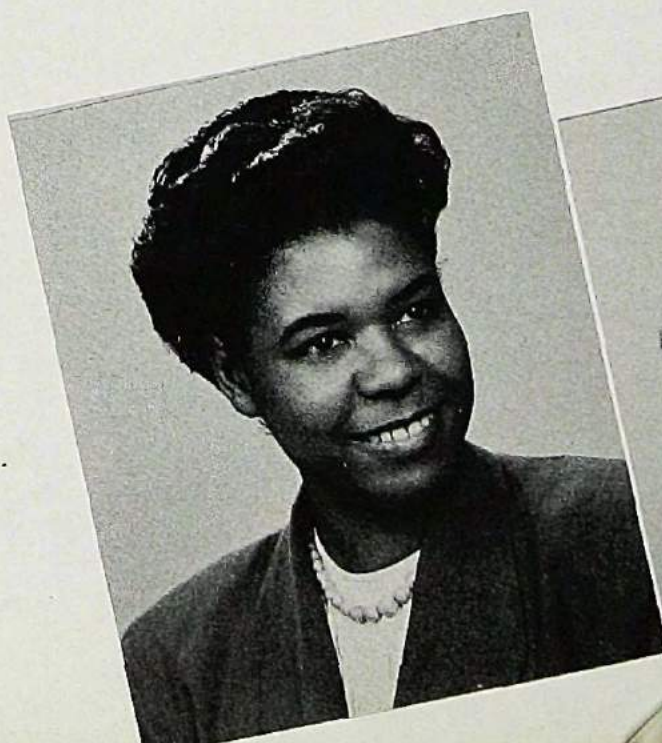
*admired for deep integrity . . . loved for inclusive
friendliness . . .
geography club . . . psychology club . . . red cross
. . . f.t.a. . . .*

PAULINE E. WEINRICH

K. P.

*quiet speech . . . respected by all . . . true in
friendship . . .
w.a.a. . . . bowling . . . psychology club . . . f.t.a.
phi omega psi, . . . scholarship . . .*

SENIORS



WILLIAM J. WEISENHORN

B. E.

inimitable laugh . . . melodious song . . . executive characteristics . . .

pres.—junior class . . . vice-pres.—s.g.a. . . . pres.—
mixed chorus . . . debits and credits club . . . who's
who . . . bookstore staff . . .



DOROTHY ELIZABETH WENCZ

K. P.

sporty . . . clever . . . definite . . . gd^ salute . . .
trenton s.t.c. . . . theta delta rho . . .



JANET ELIZABETH WHEELER

K. P.

outdoor enthusiast . . . lovely model of composure
. . . ever cooperative . . .

pres.—outdoor ed. club . . . s.g.a. . . . , f.t.a. . . .
pres.—phi omega psi . . .

OLIVE R. WESTA

B. E.

excels in management . . . photography . . . definite
decisions and attitudes . . .

w.a.a. . . . s.g.a. . . . business manager—yearbook
. . . debits and credits club : . .



OF 1950



FRANCES JAYNE WHITE

G. E.

none but herself can be her equal . . .

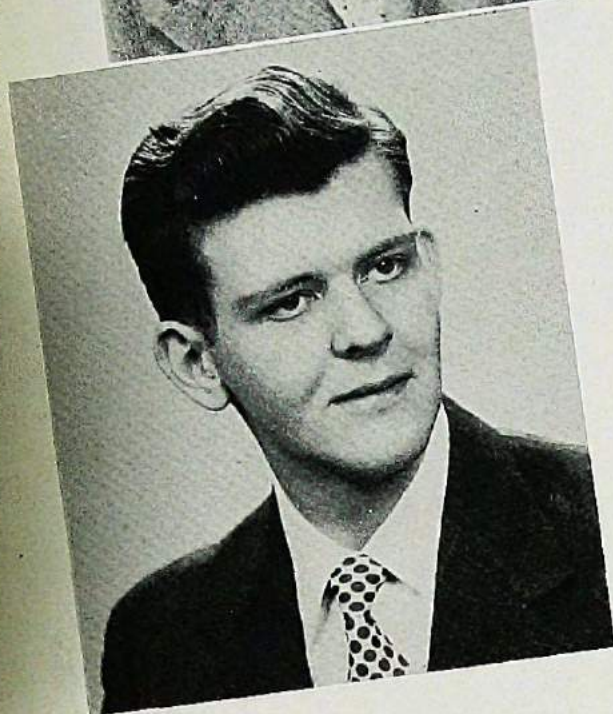
Pres.—w.a.a. . . . s.g.a. . . . f.t.a . . . yearbook staff
 . . . assembly comm. . . . pres.—inter varsity chris'
 tian fellowship . . . kappa delta pi (national honor
 societ in education) . . .

PETER JOSEPH WILD

G. E.

*c'mon, tell me too . . . luminous senior . . . sociable
 . . . assiduous . . . ~~etc~~, our editor . . .*

yearbook editor . . . skull and poniard . . . assist,
 ed. flashlight . . . student government . . . p.s.t.c.s.c.a.
 trustee . . . outdoor ed. club . . . operetta . . . treas.
 —junior class . . . a cappella chorus . . . mixed
 chorus . . . social comm. . . . men's eating club . . .
 senior show . . . bookstore staff . . . , curriculum
 comm . . . who's who among students in american
 colleges and universities . . .



CORA D. WILSON

G. E.

cosmopolitan . . . *home ma\er* . . . sociable com'
panion . . . ,

extension transfer . . .

SENIORS OF 1950





Senior Spotlight



OUR LIFE THROUGH THE STEREOPTICON



Reaching up to that very high shelf where our years at P.S.T.C. are stocked, we come upon an old and musty, but priceless box of memories. Dusting it off with great care we reverently lift the lid and release the many invaluable pleasures and experiences etched upon our stereopticon slide of yesterday.

Here, on top, rests our photo of Commencement, that awe-inspiring day, now we were prepared to embark upon our teaching career. As we sat before that distinguished assembly, and proudly fondled our newly awarded sheepskin, a slight smile settled on each face. The speaker praised us but we were drifting on a cloud. That soft, pleasant cloud of memories; the glittering spectacle of our Senior Ball, each belle so radiant, each lad so proud—the punch bowl—lilting melodies—we were together as a group for the last time; our practice teaching, it was such fun and the experience was priceless; that memorable trip to our Nation's Capital to observe the turning of the wheels of Government; our Senior Show, for days after our sides were sore from laughter; and our class proofs, weren't some of them a scream. As we replace our Commencement photo, our memories go back deeper and further.

Why look, under this film of dust a snapshot of our Junior Prom! At it, we danced on clouds relaxed and confident, our Practicum was behind us. We made the grade. How

strange we felt that first day, Slowly we found our place. We now knew we had chosen the correct profession, we would and wanted to teach.

Here in our collection of Junior pictures we find one of the Shaeffer Play Day—The entire boat to ourselves. What rollicking fun! A day of relaxation with the year's work behind us. A wonderful day to end a wonderful year.

Half way down we come upon a snapshot of the "Board," Will we ever forget how we quaked with fear when we appeared before that assembled Board of Dignitaries. For days* our lives hung in the balance, and then, the good news, "We're in!"

Remember the two most talked about things of our Sophomore year—the "new look" and the "new estate." The "Gibson Girl" was back again, the sweetheart of yesterday. At last the final word, the Hobart Estate was ours. This plot of ground was to be known forever after as the home of Paterson State.

Behold, here is a picture of the Sophomore Hop. We danced in a Winter Wonderland to the music of Allison Barton.

Finally, in the dust of years, we come upon our Freshman year. During our orientation at P.S.T.C. we appear to be "bewitched, bothered and bewildered" by the Supercilious Sophs who tormented us with their pranks of initiation.

Oh, how glorious the girls felt with the ratio of 9 to 1. (Men! that is!) But on the whole it may be said that the Vets were an asset to our class.

The halls of Paterson State on the night of our Freshman Frolic, were haunted by witches and goblins. Every one entering into the spirit of Halloween made our first dance a huge success.

And now our memories of College Days have been recalled. What fun it is to reminisce! So we gently close this box, our Treasure Chest of Memories, checking to make sure that each and every one has been properly filed. Many times in the future we will recall the box in its place on the shelf, fondly take it down, and search through its contents to find some treasured moment at P.S.T.C.



From the Old to the New . .

UNDERCLASSES



THE JUNIORS LOOK FORWARD TO THE NEW

PRESIDENT
Doris Mickiewicz

VICE PRESIDENT
James Lomauro

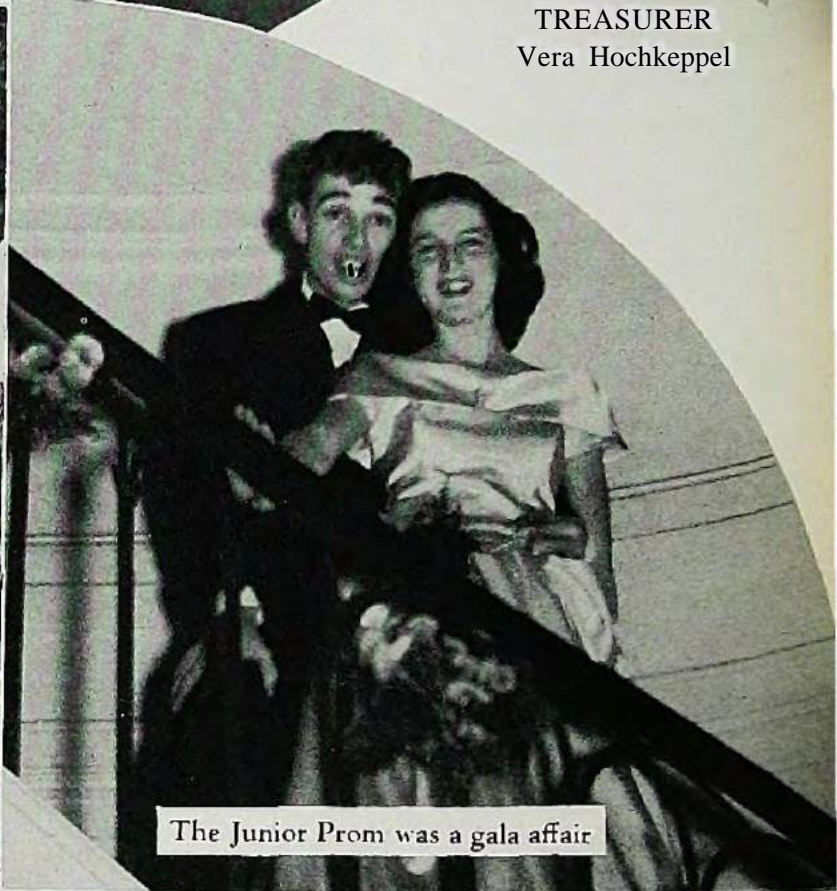
SECRETARY
Sheila Cohen



TREASURER
Vera Hochkeppel



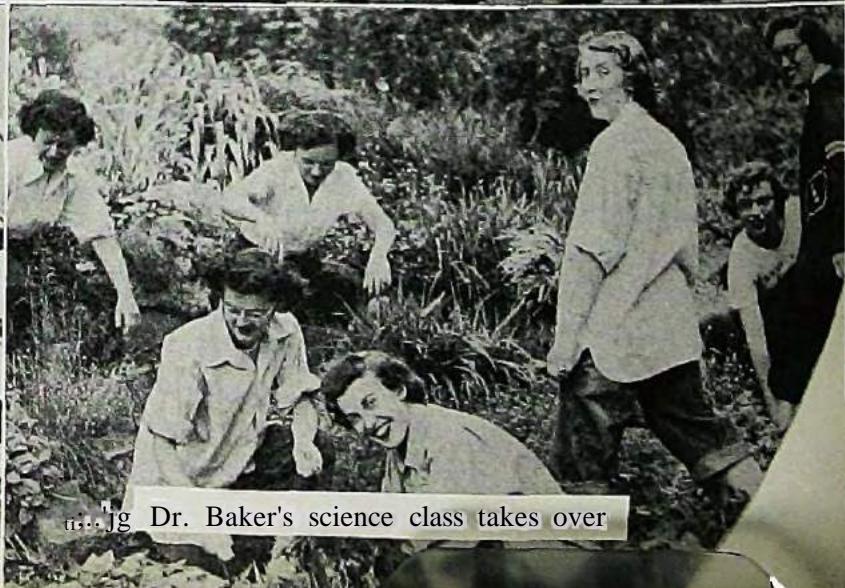
The Juniors enjoy a day at the new campus.



The Junior Prom was a gala affair



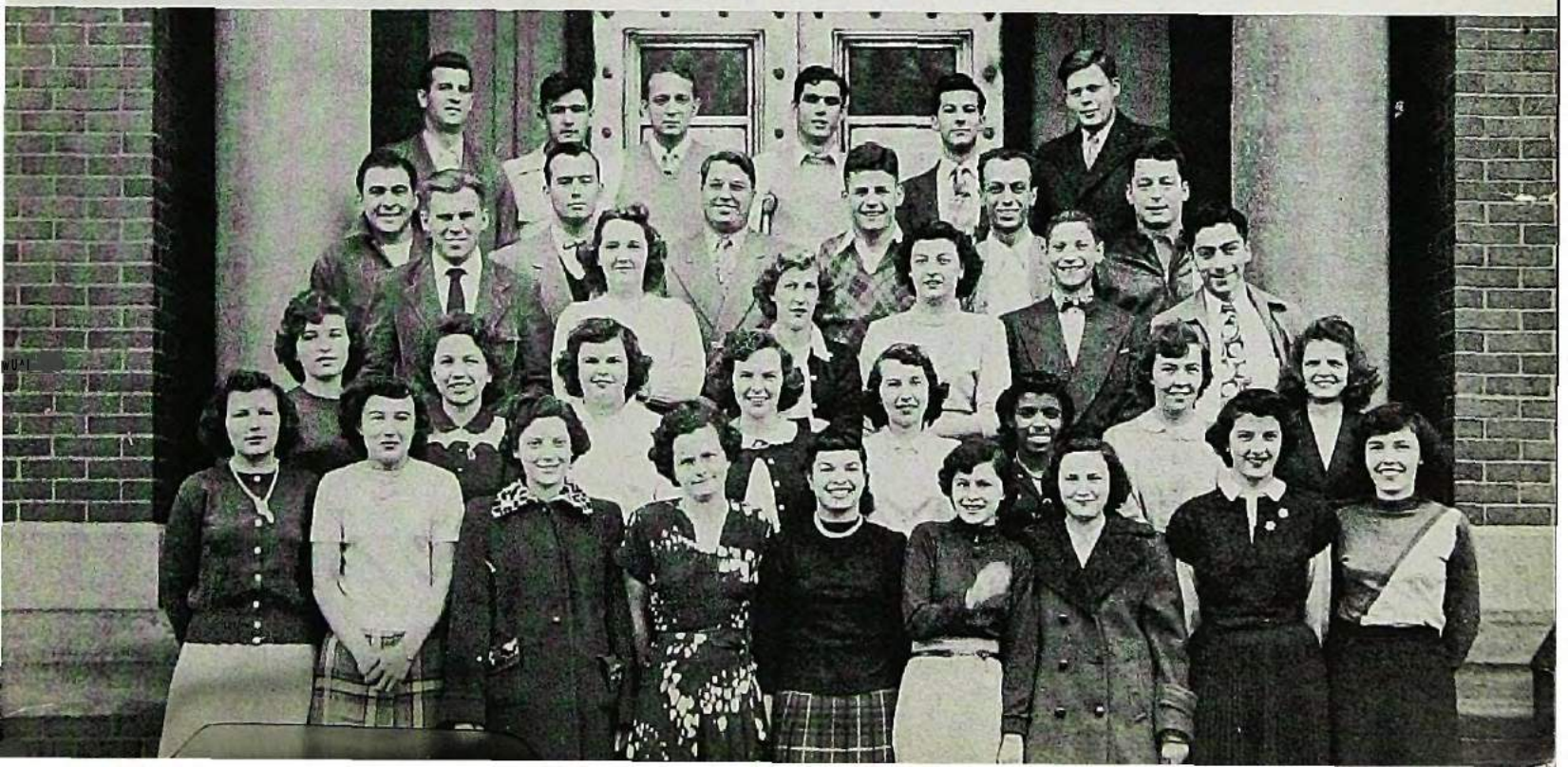
P. S. T. C. was never like this



Dr. Baker's science class takes over



JUNIOR CLASS



TIME MARCHES ON FOR THE SOPHOMORES

PRESIDENT
Harold Seeley



VICE PRESIDENT
Michael Harabulinec



SECRETARY
Ethel Herman



TREASURER
Ann Lawlor

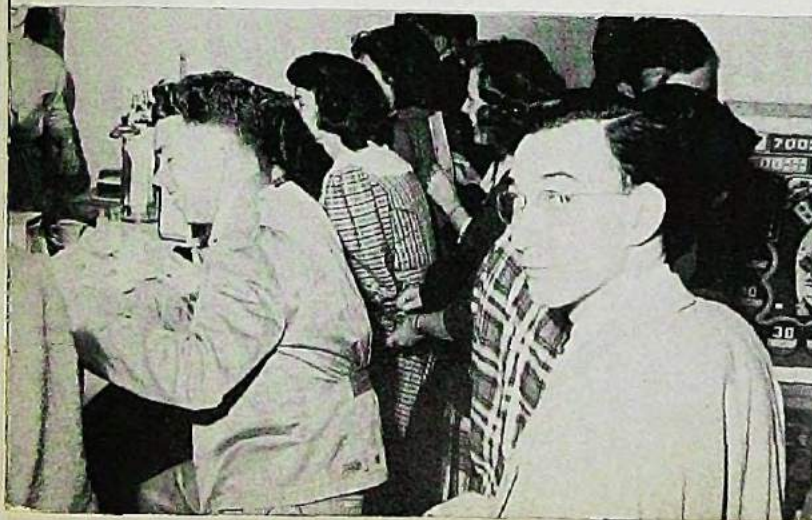


The big event was the crowning of the campus queen



The Sophomores are in store for a similar treat

Classes are held at Tom's during free periods.



Some of the campus queen cuties.





SOPHOMORE CLASS



THE FRESHMEN HAVE A QUICK LOOK AT THE OLD

PRESIDENT
John Cecchino



VICE PRESIDENT
Edward Lumer



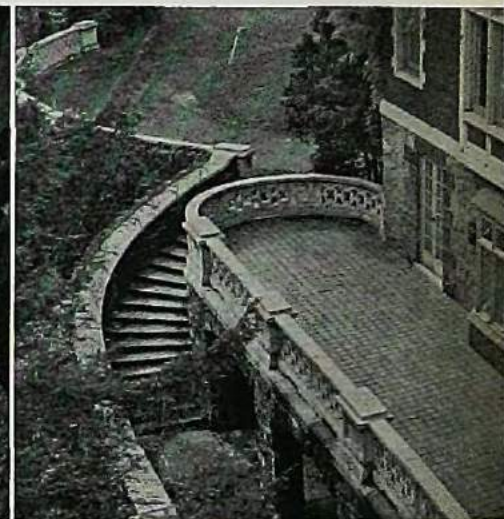
SECRETARY
Dorothy James



TREASURER
Stanley Span



A good time was had by all at the Freshman Frolic



The Freshmen look forward to their new home.

Shaffer Play Day holds a place in every Freshman's life.



The witches and goblins ran rampant last Hallowe'en at P.S.T.C.

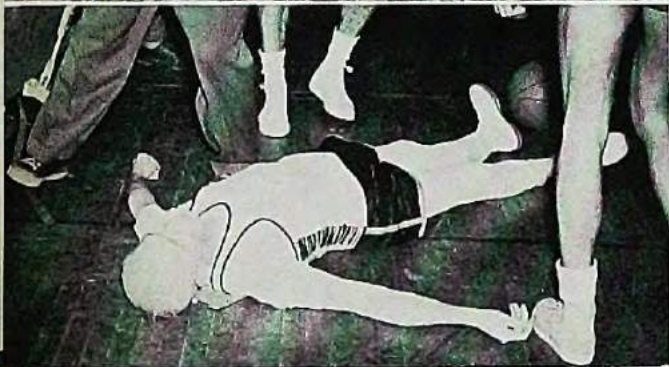
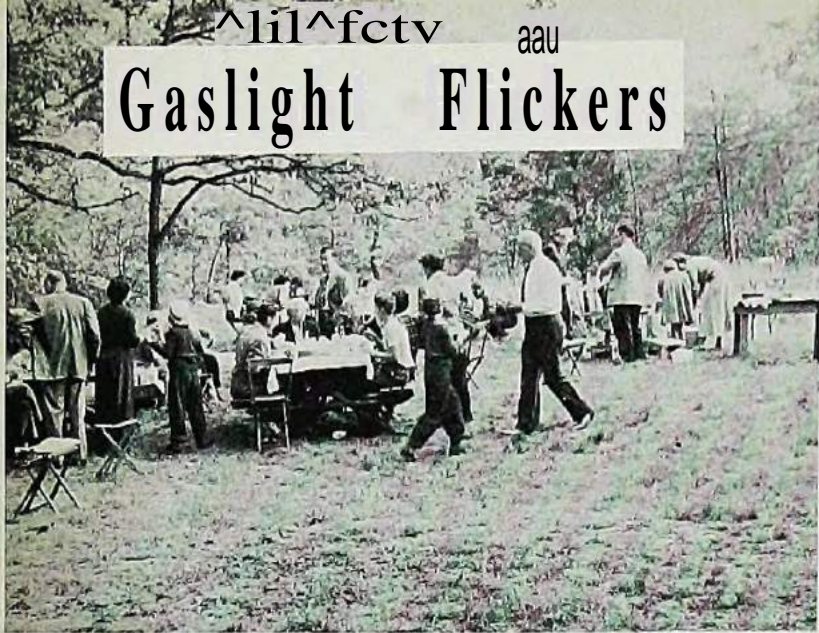




FRESHMAN GLASS



Gaslight Flickers





From the Old to the New

ACTIVITIES



T'was The Night Before Chirstmas.



Turkey with all the trimmings.

Three cheers for Miss Jackson.





You owe me six assignments, Darling.

A good time was had by all.



Would you like another cup?

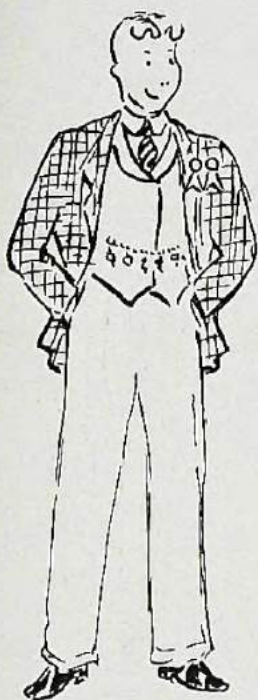


HOMORARIES



KAPPA DELTA PI

This honor society was established for the purpose of encouraging high professional, intellectual, and personal standards, and for recognising outstanding contributions to education. Members are selected on the basis of scholarship and leadership.



WHO'S WHO

Each year a number of Juniors and Seniors are chosen for listing in "Who's Who Among Students in American Universities and Colleges." The selection is based on scholarship and personality traits of the individual student.

PROKONS

Virginia Anzolit President
Mildred Ladosz Secretary-Treasurer
Benjamin Matclson Faculty Adviser



CLUBS

STUDENT GOVERNMENT ASSOCIATION

Ruth McGuirk President
William Weisenhorn Vice-President
June Perrius Secretary
Richard Stack Treasurer
Herbert Etlis Faculty Adviser

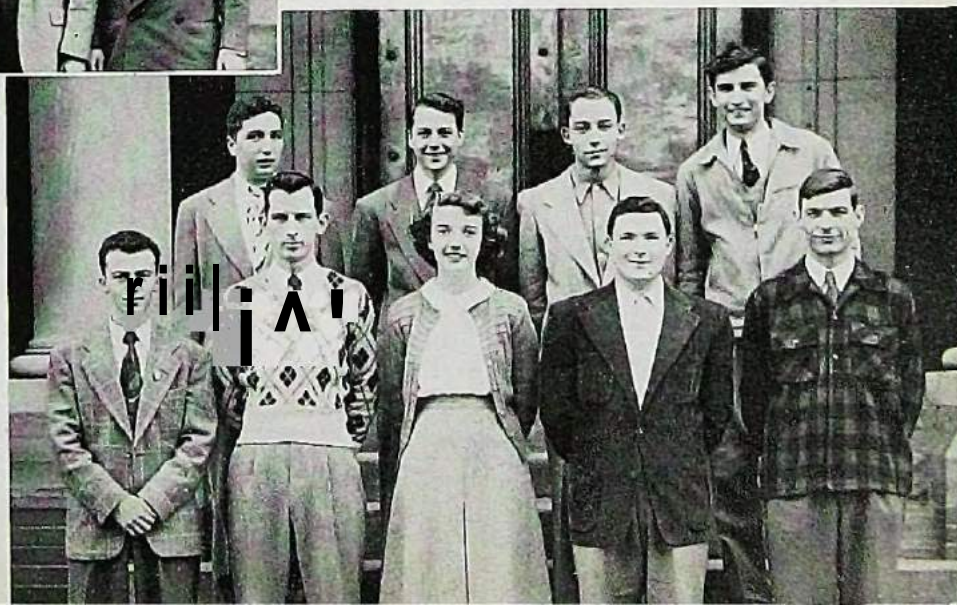


STATE BEACON

Mary Diamondis Editor
Juliette Trainor Faculty Adviser

PSYCHOLOGY CLUB

Robert Hilton President
Donald Pindus Vice-President
James Bennett Secretary-Treasurer
Louise Alteneeder Faculty Adviser





THE FLASHLIGHT

Dolores Paparozzi Editor
 Jean Tusa Assistant Editor
 Joseph Trtone Assistant Editor
 Peter Wild Assistant Editor
 Gloria Glionna Typist
 Albert Doremus Typist
 Elizabeth Rinaldi Faculty Advisor



PALETEERS

Thomas Olsen President
 Doris Nickells Vice-President
 Gail Hardy Secretary
 Neva Houghtaling Treasurer
 Marguerite Tiffany Faculty Adviser

MASQUE AND MASQUERS

Ruth McGuirk President
 William Knoll Vice-President
 Lynn Knoll Secretary-Treasurer
 Emily Greenaway Faculty Adviser



A CAPELLA CHORUS

June Perrius Accompanist
 Earl Weidner Director



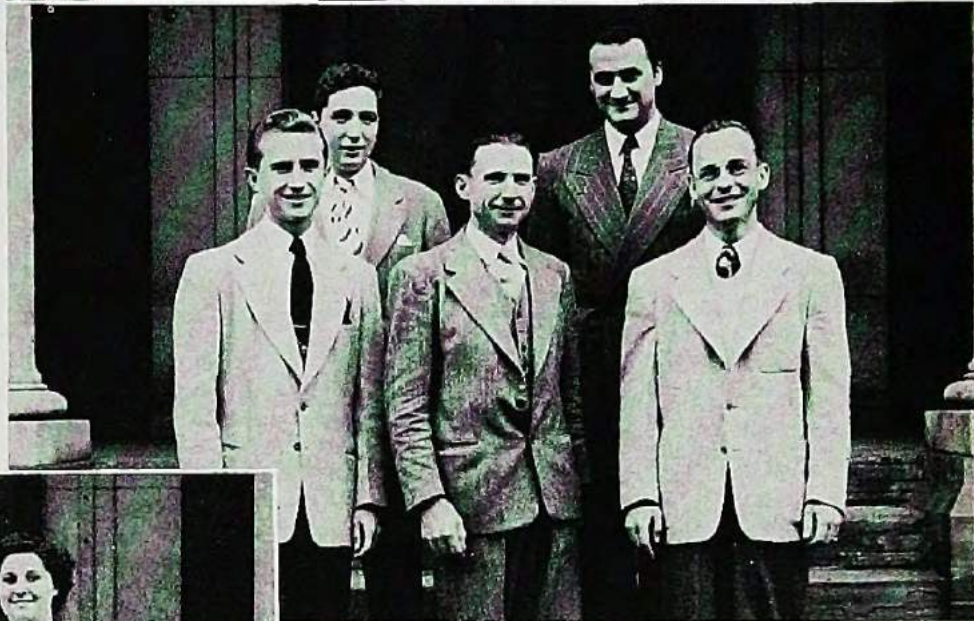
RED CROSS

Sydcl Kaplan Chairman
 Blanche Andonian Vice-Chairman
 Gloria Bevelatqua Secretary
 Christie Jeffries Faculty Adviser



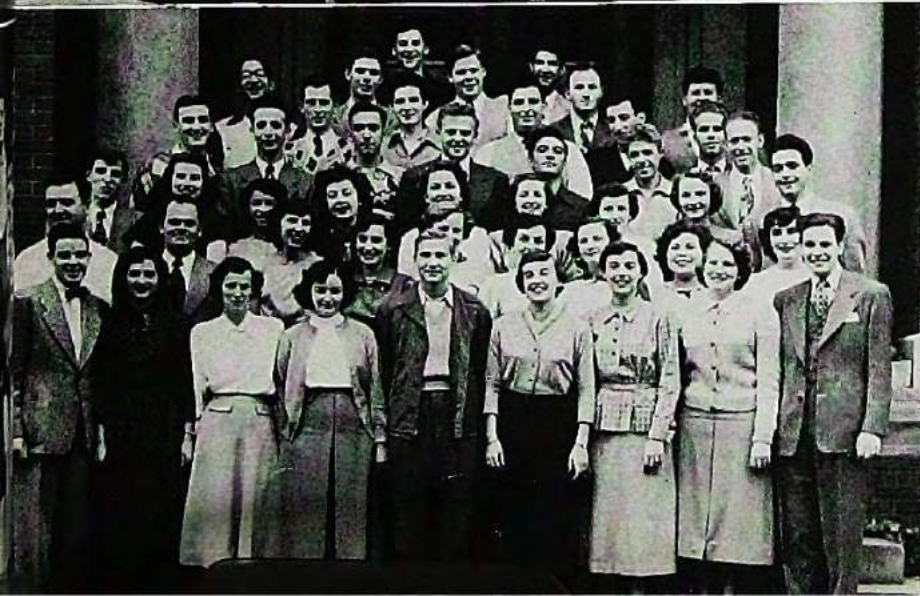
WIGHTMAN DEBATING SOCIETY

Lee Hazuda President
 Harold Seeley Secretary-Treasurer
 Ralph Miller Faculty Adviser



GEOGRAPHY CLUB

Charlie Weaver President
 Dorothy Byrnes, Marian White, Vice-Presidents
 Alice Tuck Treasurer
 Catherine Del Guidice Secretary
 Edith Shannon Faculty Adviser



DEBITS AND CREDITS

John Griffith President
 Charles Hizette Vice-President
 Colette De Vecchis Recording Secretary
 Lofs Holterhoff Corresponding Secretary
 Richard Johnson Treasurer
 Marlne Dietrich Member-at-Large
 Christine Stroop Faculty Adviser

MEN'S VARSITY CLUB

Donald Simon President
 Thomas Donnelly Vice-President
 Norman Reichert Secretary
 Robert Addison Faculty Adviser



FUTURE TEACHERS OF AMERICA

Carmella Carioti President
 Eleanor Fuchs Vice-President
 Zelda Lipset Secretary
 Rosalyn Landman Treasurer
 Mark Karp Faculty Adviser



P AND Q CLUB

Jacqueline Baker President
 Mary Diamondis Vice-President
 Gloria Bevelacqua Secretary-Treasurer
 Emily Greenaway Faculty Adviser



OUTDOOR EDUCATION CLUB

James Lomauro President
 Joseph Di Gangi Vice-President
 Miriam Gorman Secretary-Treasurer
 V. Eugene Vivian Faculty Adviser



WOMEN'S ATHLETIC ASSOCIATION

Clara Michaelowski President
 Joan Ward Vice-President
 Rosalie Garrabrant Secretary-Treasurer
 Joan Borneman Point Chairman
 Mildred Lee Faculty Adviser

PHOTOGRAPHY CLUB

Joan Sturmdorf President
 Art Balshan Vice-President
 Gail Hardy Secretary-Treasurer
 Herbert Califano Faculty Adviser



DELTA OMEGA EPSILON FRATERNITY

Lawrence Ossi President
 D. Richard DeLucia Vice-President
 Harold Steindler Secretary
 Joseph Toscano Treasurer
 Bruno Guarano Chaplain
 Pat Morone Historian
 Joseph Giorda Sergeant-at-Arms
 Herbert Califano Faculty Adviser



SKULL AND PONIARD FRATERNITY

Joseph Serra President
 James Hoshett Vice-President
 George DeCosmaker Secretary
 Dick Johnson Corresponding Secretary
 Joseph Isch Fund Master
 Richard Urban Recording Scribe
 Earl Weidner Faculty Adviser





GAMMA PHI LAMBDA

Marie Risser. President
 Ethel Herman. Vice-President
 Gloria Vespa. Recording Secretary
 Ann Lawler. Corresponding Secretary
 Rose Rjgogliosa. Treasurer
 Elizabeth Rlnaldi. Faculty Adviser

PHI OMEGA PSI

Doris Nickells. President
 Esther DeGeeter. Vice-President
 Janet Wheeler. Secretary
 Alva Fetcol. Corresponding Secretary
 Carolyn Fanslau. Treasurer
 Emily Greenaway. Faculty Adviser



THETA DELTA RHO

Evelyn Muller. President
 Joan Reed. Vice-President
 Clara Michaelowski. Recording Secretary
 Elaine Vanore. Corresponding Secretary
 Marlene Dietrich. Treasurer
 Marguerite Tiifany. Faculty Adviser



ZETA KAPPA CHI

Joyce Trinks. President
 Regina Fisher. Vice-President
 Margaret Healy. Secretary
 Claire Courtney
 Catherine Becker ...Corresponding Secretaries
 Joan Bomeman. Treasurer
 Louise Alteneder. Faculty Adviser



From the Old to the New

SPORTS



THE SPOTLIGHT FALLS ON SPORTS



FENCING

Mr. Miller's fencing squad, one of the most successful sports represented in Paterson State, is once more on the road to a victorious season. Foil men on the squad include: Maksimoski, Pindus, and Kennedy. Griffith, Isch, and Hilton are all returning to fence epee, and Captain Reda, Canova, and Antoniuk will fence sabre. The fencers who have beaten most of the large schools in the metropolitan area, will have Columbia, Fordham, and Pace on their schedule once more.

BOWLING

Bowling, which has been run at State as an intramural sport for the past four years, came into its own as an intercollegiate sport last season. The Pioneers met Panzer and Newark State, among others, and rang up a 17 and 4 won-lost mark. This season, although the squad has been weakened by the loss of Captain Petrakakis, Del Grosso, and Toscano, State is pointing for another fine season. Zrypko, Strobino, and Craig will join lettermen Betts, Leach, and Liptrot on the team. The team will also compete in the New Jersey State Intercollegiate Bowling Tournament at the end of the season.

BASEBALL

Baseball, the weak sister in Paterson State as far as sports go, is due for a rejuvenation this year. Coach Addison is counting on numerous lettermen and some very talented newcomers to put together a winning team. Not since the days when Dan Jankelunas was pitching, have the Pioneers had a winning season on the diamond. Among the returning lettermen are: Ace pitcher Spinelle, Gilmore, Van Orden, Steindler, Strobino, Harris, Goldberg, Urban, and Edinger.

W.A.A.

This past year the W.A.A. has been operating at a high speed. New innovation of the past two terms is their own bulletin of activities—"The Flier." Among their activities we find Softball, roller skating, and bowling for the fall term and tennis, swimming, and co-educational badminton club for the spring term. The girls do not compete to develop champions, but to play for play's sake. Their motto is, "A sport for every girl, a girl in every sport."

BASKETBALL

The Pioneers under their new coach, Bob Addison, settled down to a 24 game schedule with New Jersey and nearby colleges. Last season, their record was mediocre because of the high caliber of opposition they were up against. State's bid for big time basketball included doubleheaders at the Paterson Armory, and a New England and Upper New York State trip. Such opponents as St. Francis, St. Bonaventure's, Texas Wesleyan, and Canisus were met,

With six lettermen back, and fine freshman and sophomore material, Mr. Addison is pointing toward a fine season. The lettermen include: Reichert, Donnelly, Isch, Zrypko, Goldberg, and Thompson. Newcomers who will undoubtedly make good are: Moretta, Van Orden, Johnson, Pate, Likens, Zaneski, and Cohklin.

TENNIS

State's great tennis team of 1947 and 1948 was broken up when Page, Shiffman, Salmon, and Schuster left school. Laskovich, another star performer for these aggregations decided to forego sports in the 1949 season also. The team last year had a poor season due to inexperience, but prospects are very good for this coming year, as the entire team with the exception of Walker will be back. Mr. Herbert Ellis will take over the coaching reins, and practice will begin in the early Spring. Returning lettermen are: Conklin, Wheeler, Zrypko, Leach, and Rosen.

OUR 5 LETTERMEM TAKE A BOW

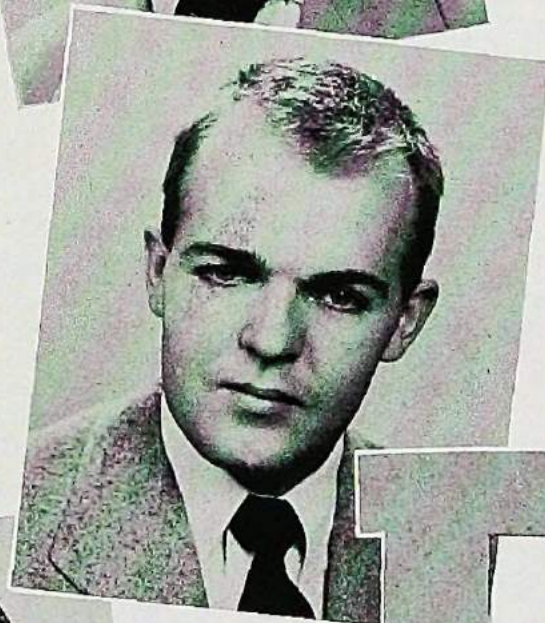
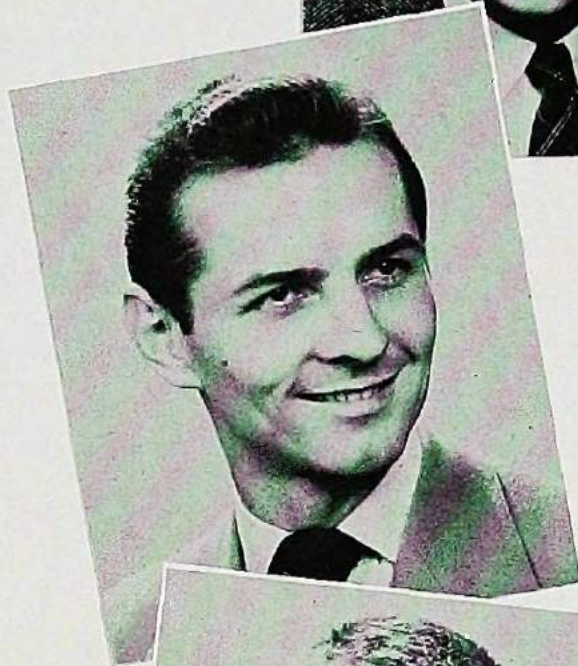
Don Edinger, who refused a pro baseball contract with Dallas of the Texas League, came to State in 1946, and promptly starred in the outfield and on the mound for the Pioneers. Don formerly played at Southern Methodist University.

Johnny Grembowiec, one of the smallest players on State's basketball team in 1946 and 1947, was noted especially for his speed and aggressiveness.

Dick Laskovich, a member of State's great tennis teams of 1947 and 1948, is well known in Bergen County tennis circles. He played both singles and doubles for State.

Dario Via. played ball at both Seton Hall and Villanova, where he starred in football and basketball. Transferring to State was our fortune, for he played basketball for two years here.

Glenn Leach starred on the basketball, tennis and bowling teams at State. He also played basketball and baseball at Montclair Teachers before coming here.



P



Yes, there's a future in basketball, says every loyal Paterson fan, after watching the fine displays put forth by the team this year. The fine school spirit did much to help Coach Addison and his Pioneers on the road to victory. With such fine material, we are looking forward to an even bigger and better season next year.

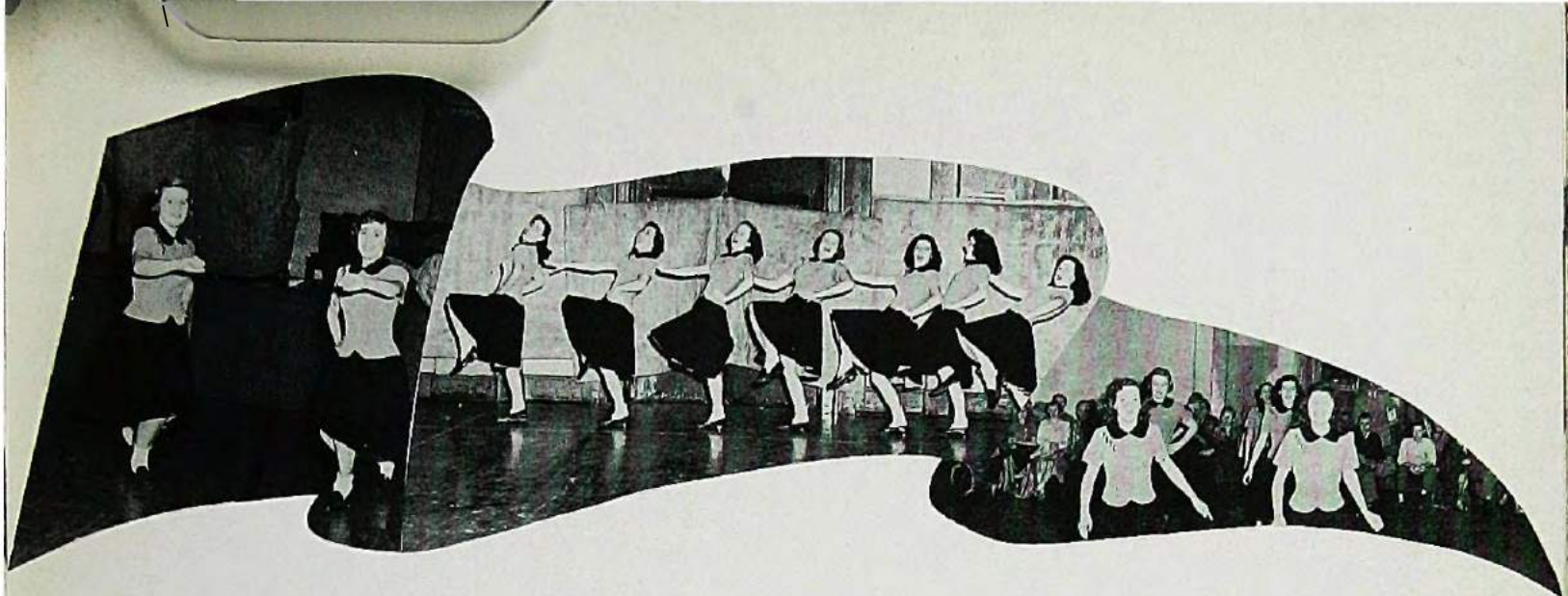
THERE'S | FUTURE IN BASKETBALL

What happened to the ball?

We can almost hear the crowd cheer.

His prayers didn't help on a shot like this.





HIP! HIP! HOORAY!

The mighty eight, without whose support the team could never have won a single game. We have watched you, helped you yell, and have liked what we have seen. You have been rewarded for your efforts in the best possible way—thanks from the Orange and Black.



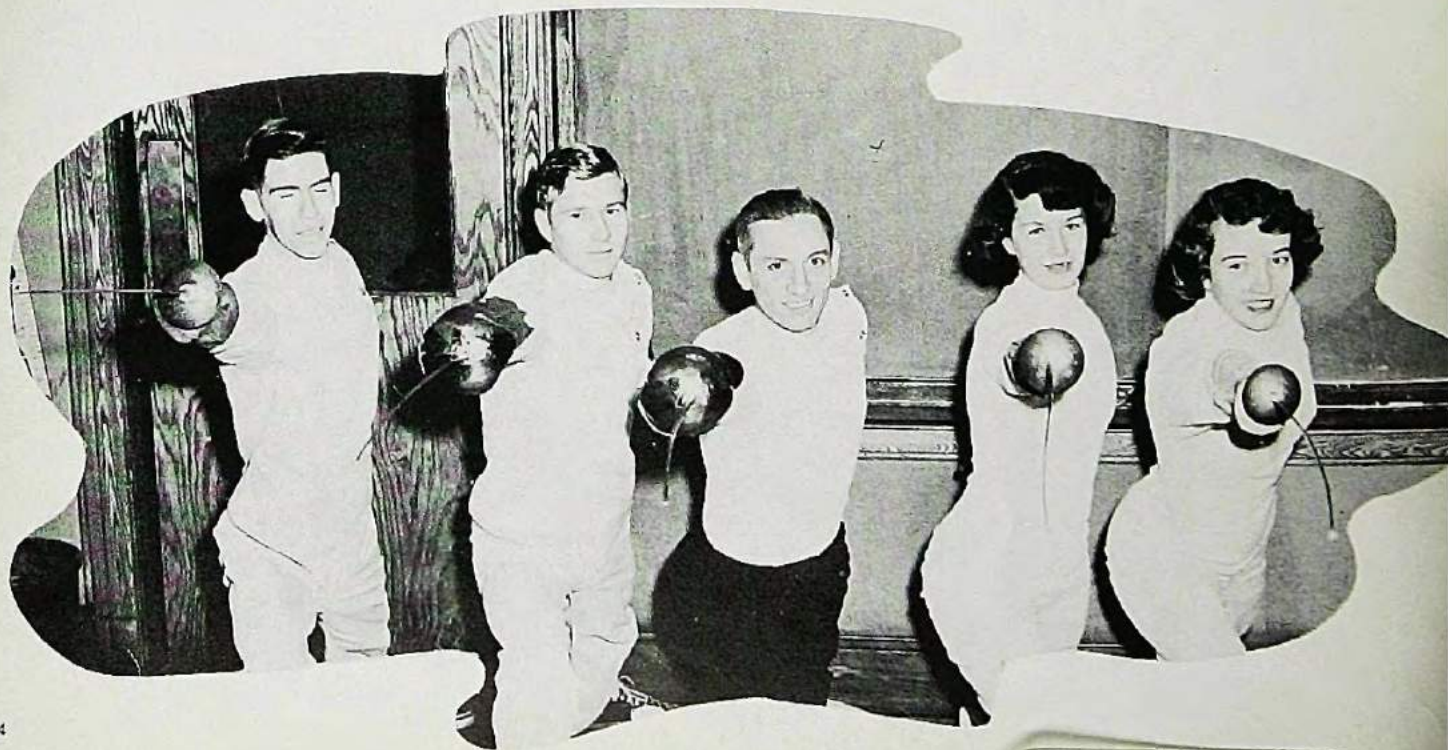
WE DEFEND ODR HONOR

Holding their own in stiff competition, the girls fencing team showed admirable skill this season. This year, they will again be entered in the Women's Intercollegiate Matches.



Captain John Griffith is looking forward to an undefeated season since there are eight lettermen back this year as compared with only two last season. The team will fence Foil, Epee, and Sabre.

A sample of what the Pioneer opponents will meet this year. As in years past, the State team will be a strong contender for both intercollegiate and state honors.



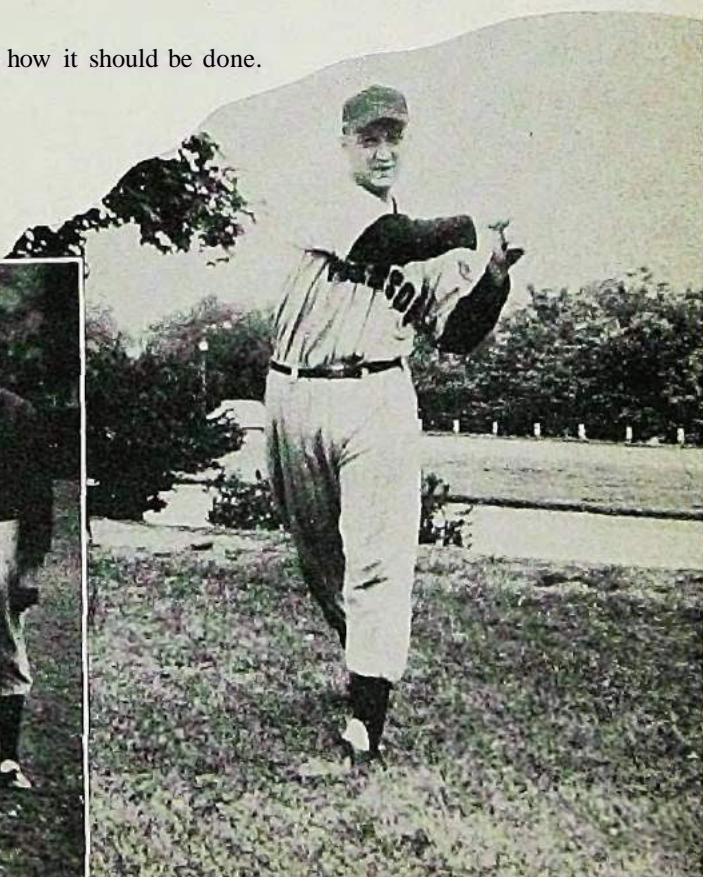


As the harbinger of spring approached, many of the enthusiastic baseball players were seen grinding *k* out at Eastside Park. Their efforts were rewarded as they closed the door on a successful season.

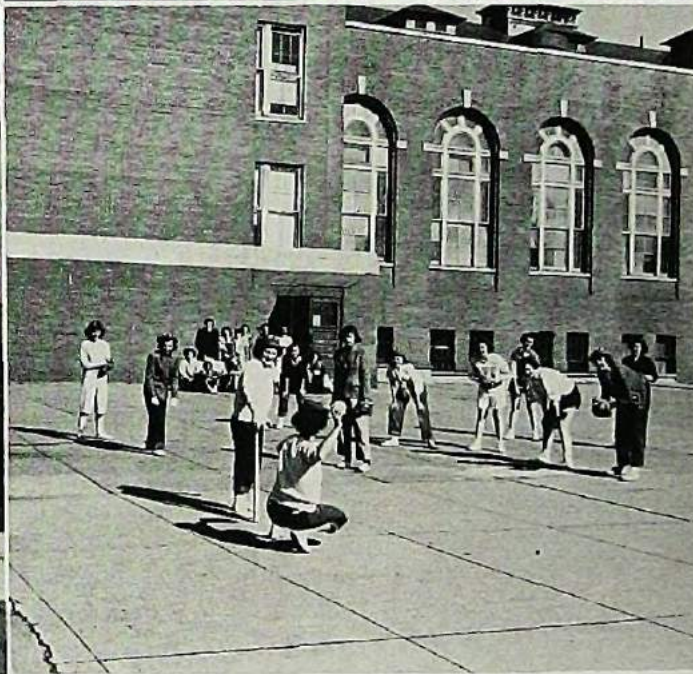
AN AMERICAN TRADITION

Dick Urban shows just how it should be done.

The group steps into the limelight.



WHAT WOULD OUR GRANDMOTHERS U



Softball in full swing, takes time out to pose.

The bowlers take over with an amazing amount of skill.

The basketeers are really something to see.

Good sportsmen take everything in stride.

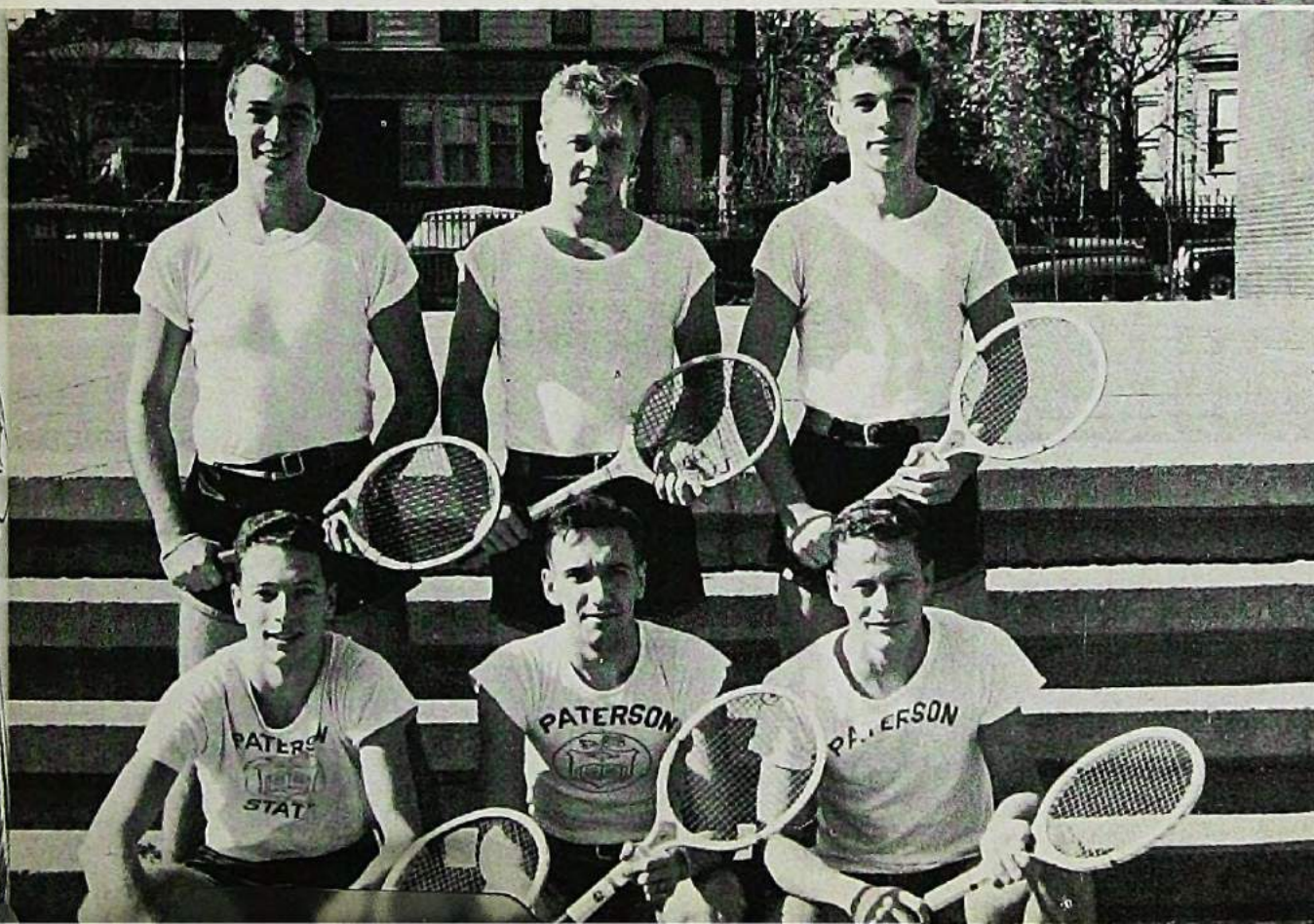
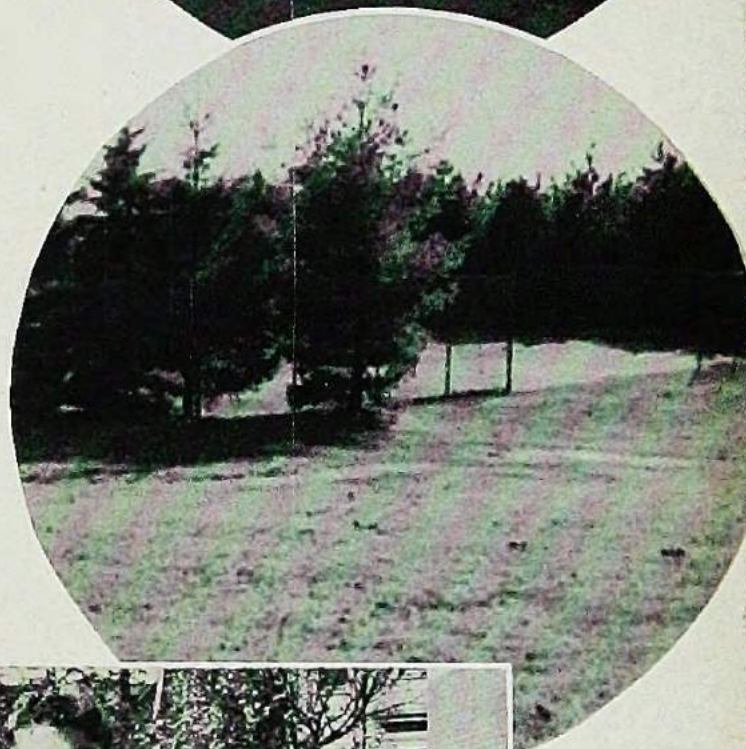
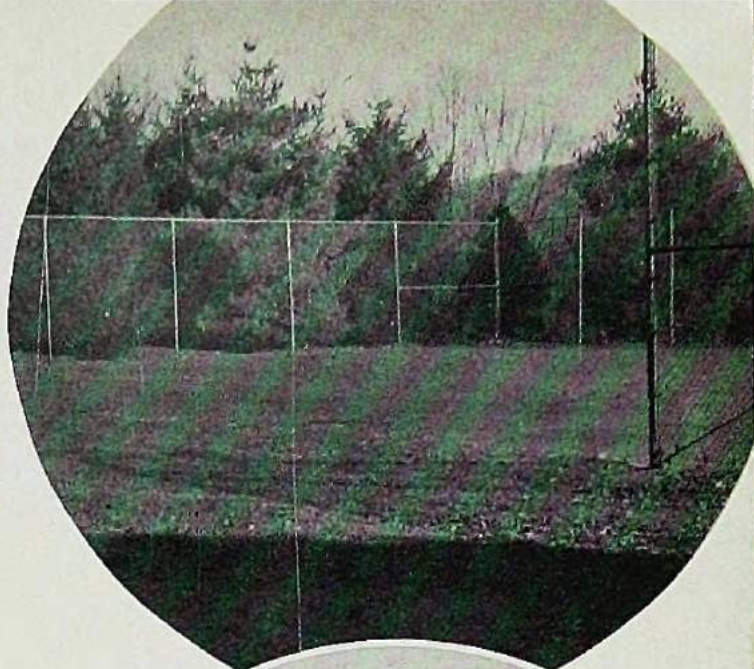


TO SUCH SHI\\11;A\\S

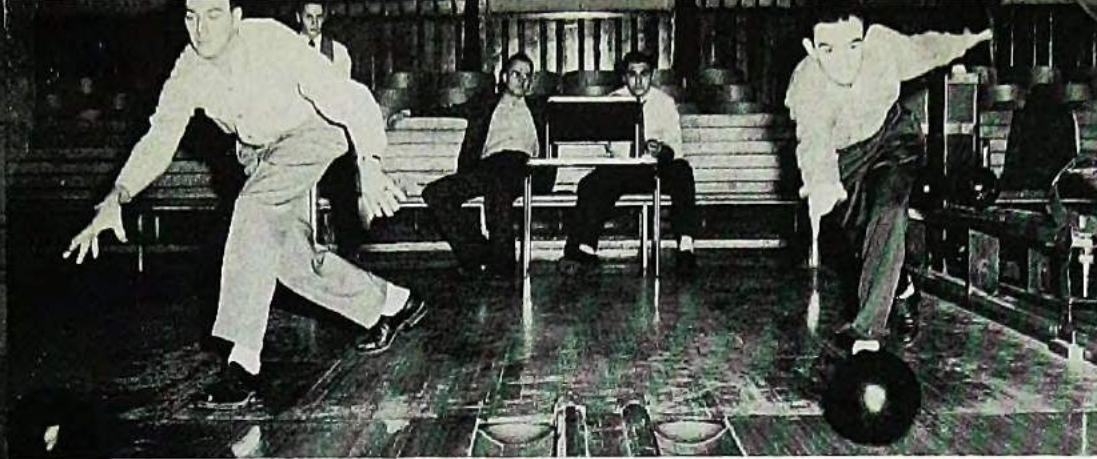
The scene of much action during the 1950 season.

The new site of Paterson State Teacher's College offers much, even fine tennis courts, where the future Pioneers will display their skill.

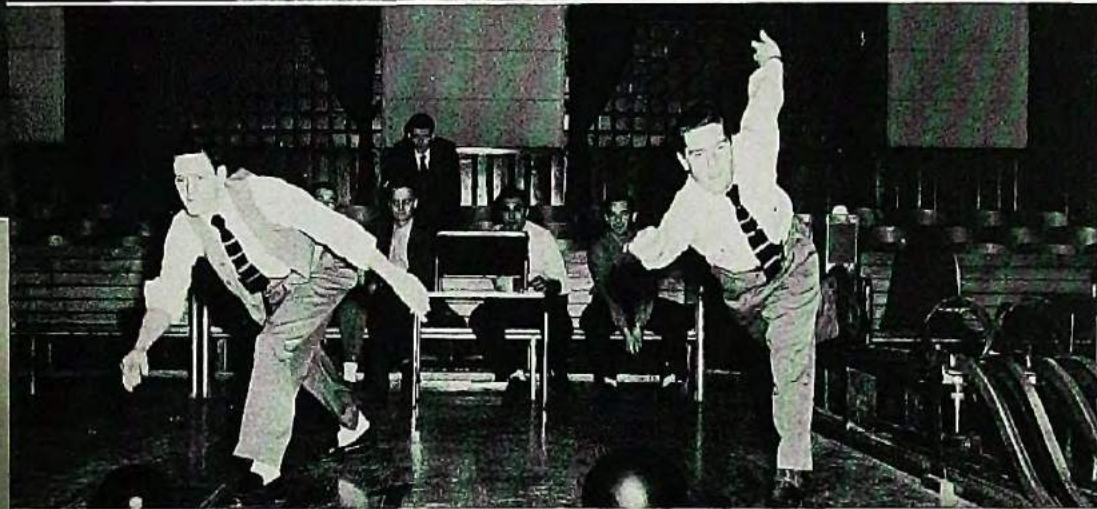
This season, the "netters," experienced tennis players from the past successful season, have proven their ability against the best opposition that their opponents could offer. After watching the team in action, bigger and better seasons are in view for the future.



IT'S i\ STRIKE!



It's shots like these that bring victory to the Pioneers. It looks like a well rolled strike for both Glen and John.



Need we say more after looking at this form. John and Ed have both done their part to boost the score and put the Pioneers on top.

These balls have seen plenty of action at the expense of our unfortunate opponents. The boys have really made a fine showing and we wish them as much luck next season.



FRIENDS

Mr. Albert F. Doremus
 Mr. and Mrs. Albert J. Doremus
 Dr. Robert Brubaker
 Jack McNerney
 Mrs. George Schwab
 Mr. and Mrs. E. Hizette
 AT, and Mrs. Theodore H. Pastor Jr.
 Mr. and Mrs. Leonard Bosland
 Mr. and Mrs. Stephen Mazzerina
 Mrs. Elizabeth K. McDermott
 "The Lucky Seven"
 Jötschie's Taxi
 Dueltgen Cutlery, Union City
 Mrs. Bertha E. Decker
 Mr. and Mrs. Joseph W. Decker
 "Ray and His Melody Boys"
 E. Capitani, Jr.
 Thomas Fiorilla
 Mrs. Mary Mallory
 Mr. and Mrs. Alfred Melentree
 Jim Pugliese
 Tubby Lobosco
 AT, and Mrs. John E. Fitzpatrick
 Paul Ray Beauty Salon
 Mr. and Mrs. M. J. McCarrick
 AT, and Mrs. J. Paparozzi
 Mr. and Mrs. Wm. Bonnema
 Re Mi Record Center
 Miss Stella Semper
 Mr. and Mrs. J. Byrnes
 Marty's Confectionary
 Mr. and Mrs. Robert Weite
 Mr. William White
 Miss Jane Vellekamp
 Daniel Regan
 Peter J. Wild
 Mr. and Mrs. Dan Doughaen
 Mrs. Victoria Andounian
 Mr. and Mrs. Rudolph J. Muller
 Passaic Memorial High School
 Leonard H. Cassert, II
 Helen Orland
 Estelle M. Wall
 Mr. O. B. Westa
 (V.F.W. Paramus Memorial Post 6699
 and Auxiliary

Mr. and Mrs. John J. Doremus
 Mr. Charles E. Pickhardt
 Philip A. Lund
 James Allen Lomauro
 Mr. and Mrs. Theo. A. Weisenhorri
 Mr. and Mrs. C. W. Lauster
 Jack Kamienski
 Mrs. Elizabeth Pgtrowitz
 Ruth Weite
 A Friend
 Mrs. Verle F. MacCulloch
 Women's Athletic Association
 Mr. and Mrs. J. N. Wintress
 Mr. and Mrs. James J. Guthrie
 Chester Sierakowski, SC 2/c, USMS
 Mr. and Mrs. Eugene A. Wild
 Diego DiLeo
 Caruso's Pastry Shop
 Mrs. Rachel DeSantis
 Mr. and Mrs. Joseph Cirinelli
 Tony Lobosco
 Mr. and Mrs. J. Spierer
 Dr. and Mrs. S. Narrett
 Maietta's Market
 Mr. and Mrs. C. Galorenzo
 Bobbie and Muriel Bonnena
 Mr. and Mrs. L. A. Wheeler -
 Mr. and Mrs. Mark O'Leary
 Mr. and Mrs. John Lados
 Clifton Auto Service
 Mrs. Jas. Murdock
 Sylvia Weite
 Miss Clara Klemme
 Mr. and Mrs. Richard Johnson
 Miss Kay Regan
 Rainbow Diner
 Mr. and Mrs. Charles Dunkerley
 Miss Blanche Andounian
 Mr. and Mrs. Geo. W. Cole
 Flo Cassert
 Mr. Anthony VenturO
 Lodi Racetrack
 Jane Stokes
 Mr. and Mrs. Lester H. Houghtaling
 Mr. William Pickhardt
 Mr. Osmond Lowery

Donald V. Levandoski
 Mr. and Mrs. George Taylor
 Mr. and Mrs. A. Jarzembowski
 McHenry's Drug Store
 R. A. Kirchner
 Mr. Ronald Bosland
 Mr. and Mrs. Frank J. Romano
 "The O. G.'S"
 A Friend
 Kenneth and Brian Gross
 A. M. Sietsema
 Erie Trucking Company
 Irene L. Talarski
 Debits and Credits
 A Friend
 Mr. and Mrs. R. A. Weinrich
 Mr. and Mrs. Ralph J. Meli
 Leo and Frank
 Ma and Pa Lobosco
 Mr. and Mrs. S. Narotsky
 Philip Malspeis
 Joan Sturmdorf
 Mr. and Mrs. C. Paparozzi
 Art and Willie Sikkema
 Jane Lesley Bailey
 Mr. and Mrs. J. F. Becker
 Mr. and Mrs. Joseph Semper
 Frank Minno
 Mrs. F. L. West
 Mrs. E. Schwarzenbach
 Miss Betty Johnson
 Alfred Orland
 Dickie Mullen
 Mr. and Mrs. Fred Nelius
 William Ansell
 Terry Hensle
 Teaneck High School
 Camille Verga
 Mr. and Mrs. F. Venture
 Nancy F. Bowman
 Mrs. Wm. Houghtaling
 1950 Cheerleaders

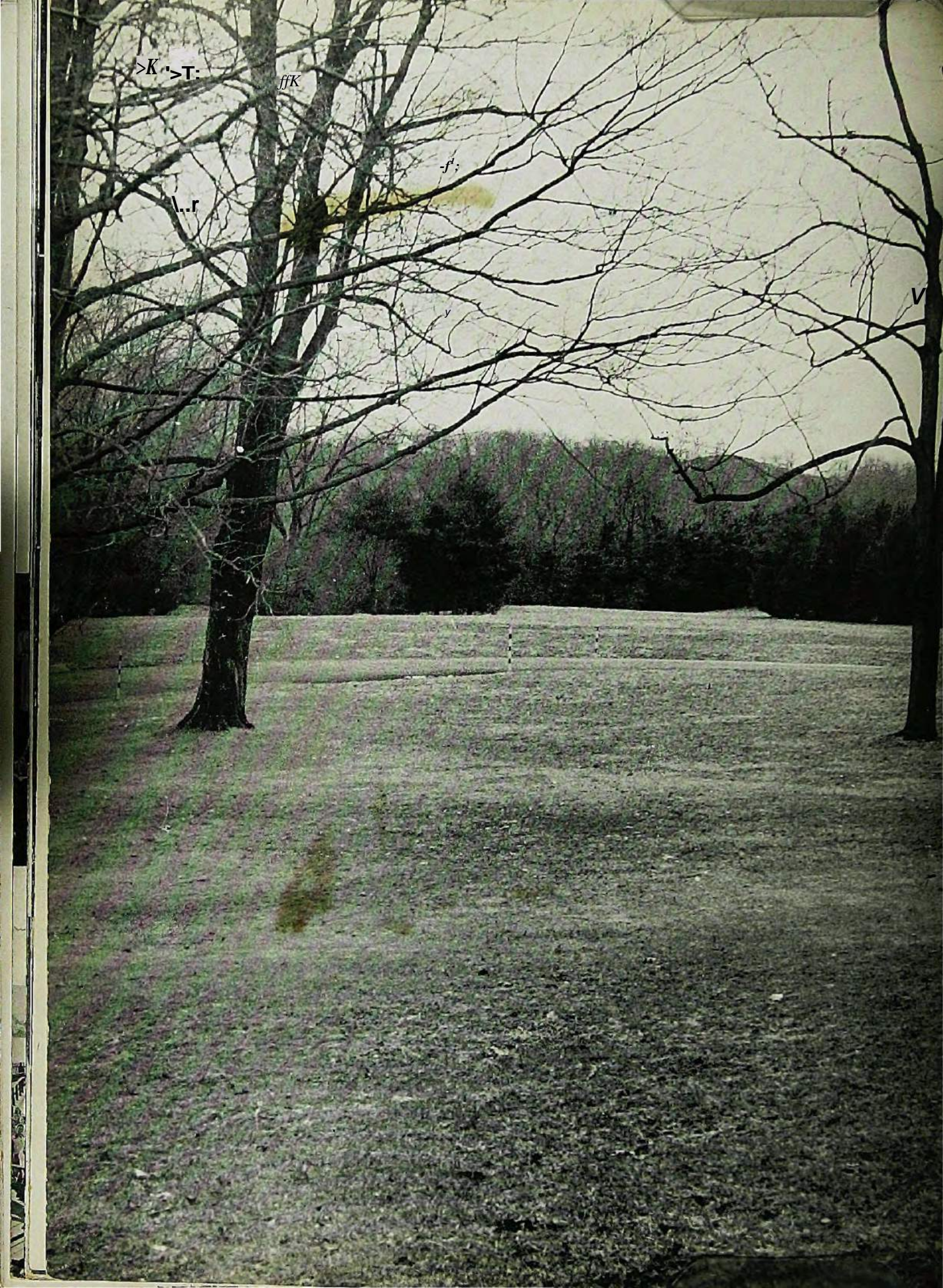
Photos by Quaclcenbush

/AUTOGRAPHS

Jeff Quattrone

Bert Tucker?
Linda Hitchcock

Brink



DOES
NOT
CIRCULATE

For Reference
Do Not Take
From the Library

WILLIAM PATERSON COLLEGE OF NEW JERSEY
3 3007 00563 9121

Folio 66177
LB New Jersey. Paterson State
1915 College.
.P3 Yearbook.
A1
1950
a.l.

} a

