

1940
Pioneer



Col.
rsiz

5

9

Sarah Byrd Askew
L I B R A R Y

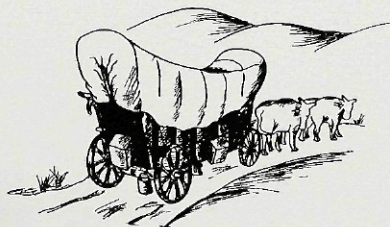


PATERSON STATE COLLEGE
WAYNE, NEW JERSEY

PIONEER

Published by the 'FORTY-NINERS'
The Senior Class of June, Nineteen Forty-Nine

PATERSON STATE TEACHERS COLLEGE
PATERSON • • • NEW JERSEY



DEDICATION

There is in you a wisdom and greatness that pleads for mighty deeds and noble thoughts This living, intangible universal resides in the precious chambers of your heart and mind and fills them with the soft radiance of brave counsel It speaks to men of all ages a message of love, truth, faith, and justice

It commanded persecuted men and women to seek a new home in a wild and desolate continent It whispered words of courage to half-clad youths at Valley Forge, who made of their bloody foot-prints in the snow crimson prophecies of future independence and grandeur It pleaded "ever onward" to intrepid pioneers tracking across vast prairies and dusty plains

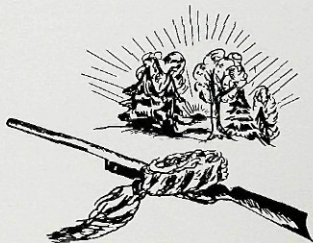
This voice, this inner self, this you has not died Pause in your race with time and feel its mighty pulse Cloak your spirit in the dignity of its tolerance, the joy of its accomplishment, and the fervor of its resolution

This eternal being knows neither poverty nor riches, ugliness nor beauty, woman nor man It is a gift from God to all humanity Like a vein of buried gold brought to the surface, it awaits but your command to bring you unrealized riches.

Look forward to your destiny with renewed hope and joy Let not your eyes become moist with the tears of past sorrows nor the fears of future doubts A voice within you cries,

*"Be not the last to move in line,
Seek you the front and let your banners serve as guides"*

*"A dedication has been made
A voice within you must be saved
A path before you marks the way
The time runs short, you cannot stay"*





CLAIR S. WIGHTMAN

MESSAGE TO SENIOR CLASS

You have chosen "Pioneering" or "The Spirit of the Pioneer" as the theme for your yearbook, and I extend to you my congratulations.

In many respects our college has been a pioneer institution and, as such, at times it has experienced difficult and trying situations; the life of the true pioneer, like the life of the reformer, is not an easy one. Yet, although pioneering has its unpleasant aspects, it has also its rewards. Pioneering implies love for adventure and the unknown. It implies also a desire for new things and a willingness to change. We must not deceive ourselves, however, by thinking that we are doing pioneer work and, therefore, something significant whenever we do something that is difficult or new for us. It is quite possible that that which is new for us has long been known and practiced by others of greater experience and ability. Nor is there any particular value in change merely for the sake of change. The value lies in the attitude of mind or spirit that is receptive to new ideas and ways.

If you lose the desire for adventure and the unknown, then you will have lost the spirit or zest for doing that which makes you truly representative of your alma mater. I urge you, therefore, to keep your mind in readiness for things that are new, and I ask you to accept your share of the responsibility for supporting and promoting pioneer work. This is your responsibility to democracy, your obligation for the privilege of having attended the Paterson State Teachers College. May you be worthy representatives of our pioneer institution.

CLAIR S. WIGHTMAN, *President*



TUNIS BAKER, PH D
Associate Professor of Science

CLASS ADVISOR



KENNETH B. WHITE, Ed D
Dean of Instruction

EDITH L. JACKSON, M A
Dean of Women

SAMUEL P. UNZICKER, Ph D.
*Associate Professor of
Education*

LOUISE E. ALTENEDER, Ph.D.
*Associate Professor of
Education*

M. HERBERT FREEMAN, Ph D
Professor of Business Education

MARK KARP, Ph.D
Associate Professor of English

RALPH W. MILLER, O.D
Instructor of Social Science

DOROTHY A. ABRAMS, M A
*Assistant Professor of Library
Science*

ROBERT F. BAKER, M.A.
*Instructor in Engineering and
Mathematics*

HERBERT L. CALIFANO, M.A.
*Instructor in Science and
Mathematics*

NANCY O. COOK, B.S
Instructor of Education



OLGA E DOMBROWSKI, B.S.
*Assistant Instructor in Business
Education*

EMILY M. GREENAWAY, M.S.
Instructor in Business Education

HOWARD L. HAAS, M.E.
*Assistant Professor of Business
Education*

STANFORD HENDRICKSON,
Ed M.
Instructor in Business Education

CHRISTIE JEFFRIES, M.A.
Assistant Professor of English

MILDRED R. LEE, M.A.
Instructor in Physical Education

NORA MARTIN, R.N.
Instructor of Health Education

BENJAMIN MATELSON, M.A.
*Assistant Professor of Social
Science*

GORDON E. MATTHEWS,
M.S.
*Assistant Professor of
Mathematics*

ALICE M. MEEKER, M.A.
Assistant Professor of Education

ALICE MIHLEIS, M.A.
Assistant Librarian

RAYMOND W. MILLER, M.A.
Instructor in Social Science



LOUIS C. NANASSY, M.A.
*Assistant Professor of Business
Education*

JULIUS NELSON, M.A.
Instructor in Business Education

HAZEL PAULSON, B.S.
Assistant Instructor in Education

ELIZABETH M. RINALDI, B.S.
Assistant Librarian

WILLIAM A. RUBIO-
VERGARA, M.A.
Instructor in Foreign Languages

HENRY E. SCHMIDT, M.A.
*Asst. Prof. of Physical
Education and Science*

E. CHRISTINE STROOP, M.A.
Instructor in Business Education

IRVING SUNSHINE, M.A.
*Instructor in Science and
Mathematics*

MARGUERITE B. TIFFANY,
M.A.
Assistant Professor of Art

JULIETTE A. TRAINOR, B.A.
*Asst. Lib. and Asst. Prof. of
Foreign Languages*

V. EUGENE VIVIAN, M.A.
Assistant Professor of Science

EARL L. WEIDNER, M.A.
Instructor in Music

EDITH R. SHANNON, Ph.D.
Professor of Education



OFFICE STAFF

FRANK ZANFINO
MARIE ROEGERS
ISABELL BOER
LILLIAN F. ADAMS
ALBERTA CASSELLS
GERTRUDE GOLD
GRACE LENNON
PHYLLIS MIRCHIN
ADELE DeWINNE



BOOKSTORE STAFF

JEANETTE MORRIS
FRANK ZANFINO
MILDRED LADOSZ
DULGIE GROSSKURTH
WILLIAM WIESENHORN
DONALD RAFFETTO



CAFETERIA STAFF

ANN BENTZINGER
EMMA ALBINSON
IRENE TALARSKI

SENIORS





GLORIA ABDELNOUR

76 Montclair Avenue, Paterson

BUSINESS EDUCATION

Activities

Debits and Credits Club, Secretary '49, Phi Omega Psi Sorority, President '49, Women's Sports Club, Art Club, Mixed Chorus, Freshman Handbook staff, Social Committee, Operetta, Trial By Jury.

As merry as the day is long.



DOROTHY MAY ACKERMAN

283 Voorhis Avenue, River Edge

GENERAL ELEMENTARY

Activities

Psychology Club, Yearbook staff.

Serene, quiet charm personified.



ELIZABETH ANDALF

135 Caldwell Avenue, Paterson

GENERAL ELEMENTARY

Activities

Beacon reporter, Women's Sports Club, Vice-President and President, Geography Club, Student Government Association, Vice-President of the Senior Class, Phi Omega Psi Sorority, Playdays, W.A.A. awards

A merry heart—life's surest panacea.

TUNIS J. BELLO
30 Spruce Street, Passaic
BUSINESS EDUCATION

Activities

President of Student Cooperative Association, Feature Editor of Beacon, Debits and Credits Club, Literary Editor of Yearbook.

Special Honors

Kappa Delta Pi

Matchless ability enveloped by a rare gift of wit and humor.



RITA EVELYN BICHER
264 Moore Street, Hackensack
KINDERGARTEN-PRIMARY

Activities

Glee Club, Mixed Chorus, FTA, Women's Sports Club, Bowling Club, Basketball

"A woman who has learned to smile with her eyes will always secure admiration"

—Humphreys



LOIS BROWN
80 Murray Hill Terrace, Bergenfield
KINDERGARTEN-PRIMARY

Activities

Transfer from Trenton State Teachers College, Orchestra, two years, and Arguomuthus Sigma Sorority, three years

Light-hearted joy is her expression of friendliness.





JOSEPH MICHAEL CIOFFI

428 E 25th Street, Paterson

GENERAL ELEMENTARY

Activities

Psychology Club, President, Student Government Association, Prokons, Debits and Credits, Men's Glee Club, Mixed Chorus, President of Junior Class, Yearbook Staff

Special Honors

Kappa Delta Pi Honorary Society, Who's Who Among Students in American Universities and Colleges

Reflective in thought, thoughtful in action, active in expression



ANITA JOHANNA COLUCCI

495 Main Street, Paterson

GENERAL ELEMENTARY

Activities

Art Club, P & Q Club, Theta Delta Rho Sorority, Women's Sports Club, F T A, Treasurer.

Nonchalance obscures the sincerity which rules her thoughts.



A RICHARD CORALLO

72 Clinton Street, Paterson

BUSINESS EDUCATION

Activities

Masque and Masquers, Psychology Club, Debits and Credits Club, Mixed Chorus, Student Government Association—Treasurer 1947-8 and Vice-President 1948-9

Special Honors

Who's Who Among Students in American Universities and Colleges

He depicts life with pose and sophistication

GEORGE DE CAUSEMACKER

808 Madison Avenue, Paterson

BUSINESS EDUCATION

Activities

Attended Princeton half a year, Debits and Credits Club, Mixed Chorus, Student Government Association, Treasurer of Junior Class, President of Senior Class

Special Honors

Who's Who Among Students in American Universities and Colleges

*Because of his character and friendly manner,
he stands high*



GLADYS BLUM DE CAUSEMACKER

808 Madison Avenue, Paterson

KINDERGARTEN-PRIMARY

Activities

Freshman Show, Glee Club, Basketball, Madrigals, Masque and Masquers, Theta Delta Rho Sorority.

*Like a ray of sunshine she enlightens your
thoughts, and troubles are soon forgotten*



DOROTHY MAE DIETRICH

146 Jasper Street, Paterson

GENERAL ELEMENTARY

Activities

Future Teachers of America, P & Q Club, Art Club, Vice-President; Vice-president of Junior Class, Theta Delta Rho Sorority, Junior Eastern Arts Association, Social Committee of Student Government Association

Special Honors

Who's Who Among Students in American Universities and Colleges

Her steps lead to accomplishment.





LOIS DALBY DOLAND

Minns Avenue, Preakness

GENERAL ELEMENTARY

Activities

Art Club, Dramatic Club, Bowling Club, Phi
Omega Psi.

Sophistication in high heels.



JOAN LILLIAN DOYLE

128 Tenth Avenue, Hawthorne

KINDERGARTEN-PRIMARY

Activities

Psychology Club, secretary, Zeta Kappa Chi, Liter-
ary Staff of Yearbook.

Sincere and sweet, so near perfection.



JUNE AGNES ENDERSBY

292 East First Street, Clifton

BUSINESS EDUCATION

Activities

Debits and Credits, Theta Delta Rho.

*"The smiles that win the tints that glow, but tell
of days in goodness spent"*

—Lord Byron

RUTH ROEMER FLANZMAN
Apt P-4, Franklin Garden Apts., Clifton

GENERAL ELEMENTARY

Activities

Panzer College for Freshman year, Dramatic Club,
Mixed Chorus, Chairman of Social Committee of
the Student Government Association, Planning
Committee for Senior Class Night.

She walks in beauty



JEAN EDITH GIORDANO

235 Fifth Avenue, Paterson

GENERAL ELEMENTARY

Activities

Beacon, Women's Sports Club—Vice-President,
Phi Omega Psi Sorority—vice-president, received
two athletic awards.

*The simplicity of expression . . . the sincerity
of friendship*



EILEEN KATHERINE GORMAN

3 Chester Place, Englewood

GENERAL ELEMENTARY

Activities

Future Teachers of America—vice-president, P &
Q Club—secretary and vice-president, Gamma Phi
Lambda Sorority—secretary

She looks on life with quiet eyes





BARBARA LEE GREGORY

266 Lincoln Avenue, East Paterson

KINDERGARTEN-PRIMARY

Activities

Glee Club, Mixed Chorus, Art Staff of Yearbook

Pensive simplicity.



CAROL JEAN GREYDANUS

17-10 Romaine Street, Fair Lawn

GENERAL ELEMENTARY

Activities

Masque & Masquers, Beacon, Flashlight Assistant, Women's Sports Club, Outdoor Education Club, Future Teachers of America, Pioneer Staff, Class Secretary in sophomore year.

Special Honors

National Life Camp Scholarship

A smile of love and sincerity, a grin of fun and friendship.



DULCIE ARLENE GROSSKURTH

203 East 17th Street, Paterson

BUSINESS EDUCATION

Activities

Debits & Credits, Palateers—Vice-President and President, Masque and Masquers, Women's Sports Club, Yearbook Literary Staff

Special Honors

140 Gregg Shorthand Speed Certificate and Pin

Kappa Delta Pi

Her pleasant smile sparkles in two pools of bright blue

CATHERINE MARIE JACKSON
290 So. Humphrey Street, Englewood
GENERAL ELEMENTARY

Activities

Freshman and Sophomore years spent in Fayetteville State Teachers College, Fayetteville, North Carolina

A beauty laugh echoes her love of life



MARIE ANN JARNAGIN
350 Westview Avenue, Leonia
GENERAL ELEMENTARY

Activities

P & Q Club, Art Club, Masque and Masquers, Assembly Committee, Theta Delta Rho Sorority

A face as gentle as candlelight



FRANCES MONICA KOVAL
131 Plauderville Avenue, Garfield
GENERAL ELEMENTARY

Activities

Reporter, Beacon, Phi Omega Psi Sorority, Vice-President, P & Q, Girls' Glee Club, Girls' Basketball Team

*Well poised with confidence and sincerity
of expression*





VITA LANCIA

617 Market Street, Paterson

GENERAL ELEMENTARY

Activities

Beacon, Phi Omega Psi Sorority—President, Sports Club, Co-Captain Cheerleaders, Glee Club, Geography Club—President, received Beacon Award, Yearbook Staff

Warm, humorous, and delightfully human



ALFRED B. LAUE

171 East 21st, Paterson

GENERAL ELEMENTARY

Activities

Outdoor Education Club

Special Honors

National Life Camp Scholarship

*Quietly, but impressively, he wound
his way among us*



ELEANORE JOAN LIPINSKI

67 Locust Avenue, Wallington

GENERAL ELEMENTARY

Activities

Masque and Masquers, P & Q Club, Future Teachers of America, Gamma Phi Lambda Sorority, Publicity Chairman of Student Government Association

*Hidden beneath a thin shell of reserve,
lies a good nature and a friendly heart*

MARY MARGARET LOBOSCO

121 McBride Avenue, Paterson

GENERAL ELEMENTARY

Activities

Editor-in-chief, news editor and reporter on Beacon Staff, Publicity Chairman—Red Cross, Art Club, Outdoor Education Club, Future Teachers of America, Class Representative and Publicity Committee for Student Government Association, Women's Sports Club, Representative Eastern States Association, Editor of Yearbook

Special Honors

Who's Who Among Students in American Universities and Colleges, Kappa Delta Pi Honorary Society, National Life Camp Scholarship

*Creative idealism in action nurtures her
joy of living*



MARGARET EDITH LOMBARDO

9 Bergen Street, Hackensack

GENERAL ELEMENTARY

It's nice to be natural when you're naturally nice



MARILYN GERTRUDE LUCAS

35 Wagaraw Boulevard, Prospect Park

KINDERGARTEN-PRIMARY

Activities

Psychology Club

Sincerity and humor beneath a calm exterior





VINCENTIAN NANCY MICHOTA

17 Bergen Street, Paterson

GENERAL ELEMENTARY

Activities

Glee Club, Mixed Chorus, Bowling, Future Teachers of America

Cheerfulness personified, efficiency exemplified



ADELINE AUGUSTA NICLAUS

148 Grove Street, East Paterson

GENERAL ELEMENTARY

Activities

Psychology Club, Masque & Masquers, President and Librarian of Future Teachers of America, P & Q Club, Women's Sports Club, Gamma Phi Lambda Sorority—Treasurer

"Jest and youthful jollity"

—Milton



MILO OKKEMA

295 Goffle Road, Ridgewood

BUSINESS EDUCATION

Activities

Varsity Baseball, Junior Varsity Basketball.

"A mind content both crown and kingdom is"

—A. Hume

JEAN MARY PASINSKA
123 Palisade Avenue, Garfield

GENERAL ELEMENTARY

Activities

Beacon, Secretary and Treasurer—Psychology Club, Masque & Masquers, Glee Club, Mixed Chorus, Junior Class—Secretary, Student Government Association—Secretary, President of Theta Delta Rho Sorority, Yearbook Staff.

Special Honors

Who's Who Among Students in American Universities & Colleges, National Life Camp Scholarship.

*Warmth of personality aglow with sensitivity,
creativity and sincerity*



CHRISTINA MARIE PEPPER
58 North 4th Street, Paterson

GENERAL ELEMENTARY

Activities

Beacon Reporter, Photography Club, Sports Club, Bowling Club, Geography Club, Outdoor Education Club, Phi Omega Psi Sorority, Art Club

Bubbling champagne with laughter for a chaser



NORMA CLAIRE PERRY
Saw Mill Road, North Haledon

BUSINESS EDUCATION

Activities

Masque & Masquers, P & Q Club, Debits and Credits Club—President.

Special Honors

Kappa Delta Pi Honorary Society

*A renaissance beauty reflects the goodness
within her.*





VIRGINIA GILBERT PITEA

132 Barbour Street, Haledon

BUSINESS EDUCATION

Activities

Beacon, Art Club, Debits & Credits—Treasurer,
Masque and Masquers—Treasurer, Theta Delta
Rho Sorority

Vitality unlimited



DONALD EDWARD RAFFETTO

150 Harding Road, Glen Rock

BUSINESS EDUCATION

Activities

Debits & Credits, Beacon—Business Manager,
Senior Class Treasurer, Yearbook Business Man-
ager, College Bookstore Manager

Special Honors

Kappa Delta Pi Honorary Fraternity

"The biggest wisdom is continued cheerfulness."
—Montaigne.



JOAN CATHERINE REED

134 Mahar Avenue, Clifton

BUSINESS EDUCATION

Activities

Freshman Review, Theta Delta Rho Sorority,
Debits and Credits—Treasurer, Mixed Chorus,
Student Government Association, National Student
Association Campus Committee Chairman, Beacon,
Senior Social Committee, Secretary of Senior Class,
Yearbook staff

Special Honors

Who's Who Among Students in American Uni-
versities and Colleges, Delegate to first student
congress at University of Wisconsin, 140 Short-
hand Speed Certificate and Pin

*Her lovely manners and liling gaiety are
invitations to lasting friendship*

CLARENCE J. ROSENDALE

13 Heights Avenue, Fair Lawn
BUSINESS EDUCATION

Activities

Debits & Credits Club

"The good and the wise lead quiet lives."
—Euripides



JOSEPH SERRA

7 North York Street, Paterson

BUSINESS EDUCATION

Activities

Psychology Club, Debits & Credits Club, Varsity Club, Baseball Team, Student Government Association—President, Skull & Pomard Fraternity

Special Honors

Who's Who Among Students in American Colleges and Universities

He makes the thunder of life his music.



IDA ELIZABETH SIETSEMA

23 East Main Street, Little Falls

GENERAL ELEMENTARY

Activities

Mixed Chorus — President, Secretary-treasurer, Madrigal Singers, Theta Delta Rho Sorority, Operetta, Outdoor Education Club, Junior Red Cross, Yearbook Staff

*A medley of humor, friendliness and sensitivity
written in the major key.*





DORIS MARIE SIMERSON

289 North 8th Street, Prospect Park

GENERAL ELEMENTARY

Activities

Beacon, Psychology Club, Literary Staff of the Yearbook

A soft voice, a thrill of laughter radiate a deeply consecrated gay spirit



JANE ELIZABETH STEEL

13 Garside Avenue, Mountain View

KINDERGARTEN-PRIMARY

Activities

Glee Club, Art Club

My thoughts are my companions



STEPHEN PETER SURGENT

45 Prince Street, Paterson

BUSINESS EDUCATION

Activities

Psychology Club, Men's Eating Club, Debits and Credits, Mixed & Men's Glee Club

"The fruits of labor are the sweetest of all pleasures"

—De Vauvenaignes

MIRIAM BETTY SWANN
61 Godwin Avenue, Paterson

GENERAL ELEMENTARY

Activities

Girls' Glee Club

*A heart full of resounding laughter
and melodious song*



MICHAEL URGO
5 Spruce Street, Passaic
GENERAL ELEMENTARY

Activities

Mixed Chorus, ProKons

A good-natured soul with a shadow of seriousness



EMMA M. VAN VELTHOVEN
11 Poplar Avenue, Little Ferry
GENERAL ELEMENTARY

Activities

Chairman of Assembly Committee, Student Government, Masque & Masquers, Vice-President of Sophomore Class, Gamma Phi Lambda Sorority, Captain of Cheerleaders

Alert, vivacious, and friendly to all





HELENE E. VARVISOTIS

241 Van Vorst Street, Jersey City

BUSINESS EDUCATION

Activities

Fencing Club, Captain of Women's Fencing Team,
Debits & Credits Club, Masque & Masquers.

*Her charm is like a sweet tune that one
relains forever.*



GLORIA EVELYN VESPA

169 East Eighth Street, Clifton

GENERAL ELEMENTARY

Activities

Future Teachers of America—Vice-President,
Masque & Masquers, Art Club, P & Q Club, and
Gamma Phi Lambda Sorority

An unuffed demeanor, clothed in reticence



MARILYN FLORENCE WERNER

Broad Street, Clifton

GENERAL ELEMENTARY

Activities

Art Club, Glee Club, Theta Delta Rho Sorority,
Mixed Chorus, Social Committee, Future Teachers
of America

*A brisk manner, a cheerful attitude and a
suppressed laugh.*

DOROTHY RUTH WOLFE

44 Charles Street, Little Ferry

GENERAL ELEMENTARY

Activities

Masque & Masquers, Psychology Club, Assembly Committee, Gamma Phi Lambda—Recording Secretary

Her carefree manner conceals her generous nature.



RUTH ELAINE WORTH

431 Rutherford Avenue, Franklin

GENERAL ELEMENTARY

Activities

Transfer from Montclair State Teachers College, Mixed Chorus, Future Teachers of America

Essence of a glowing warmth that touches the hearts of all



FRANK J. ZANFINO

Lower Notch Road, Little Falls

BUSINESS EDUCATION

Activities

Beacon, Debating Club—Treasurer, Debits & Credits—Vice-President, Skull & Pomard Fraternity, Baseball Team, Varsity Club, Secretary Treasurer of Veterans Organization

Special Honors

Who's Who Among Students in American Universities and Colleges, Kappa Delta Pi: Honorary Fraternity.

Intelligence, superseded only by a delightful sense of humor.





HISTORY-CLASS OF '49

Years and years ago—before our youthful spirits had become weighted down with everyone else's problems—we were freshmen. No sooner had we entered the musty halls of P. S. 24 than we were tested for the true Pioneer spirit—initiation. It was difficult to find our few men. They became lost in the mob of women, sporting shirts, slacks, pipes, and up-sweep hairdos. Do you remember Clarence Rosendale's rendition of a lovely lullaby to a "baby"? Imagination certainly ran rampant the day we paraded up and down Market Street. An imaginary mountain was just the place for our imaginary bonfire. Then with a solemn pledge, "Owa Tagu Siani," we became full-fledged Statens.

Before long we became an organized class under the direction of Dr. Tunis Baker, our adviser, and Herbert Siehling, our president. Traditional Hallowe'en decorations, costumes, and good humor made our first affair a successful Freshman Frolic. And don't forget the Freshman Review of 1945! A glance at this all-star cast should bring back a host of memories: Thelma Thorndike—Klara Sanders, Elmo Hairsputt—Michael Elia, Tumblers—Victor Bull, Gladys Blum De Causemacker, Trio—Ida Sietsema, Jean Pasinska, Ruth Newbold, Tap Dancer—Irene Perugini, Vocalist—Bob Presto, Musicians—Ed and Hal Johnson, Michael Broccon, Andrews Sisters—Joan Reed, Pat McGowan, Vita Lancia; Bing Crosby—Joseph Croffi, Hecklers—Mary Lobosco, Carol Greydanus, Joe Di Gangi, Renata Dorner, Marie Jarnigan. Written and produced by Marvin Chotin and Murray Saul.

Murray was elected president of our Sophomore Class. The influx of veterans in September, unfortunately, cut our initiation plans to a minimum of two days. This

year we sponsored two movie-dance nights at the college. Their success is still questionable. And do you remember our Winter Carnival? Those who were stranded at Lambert Castle won't ever forget it. They arranged their own coronation of King Sawyer and Queen Pasinska. The college group met at Harbour's Pond and crowned Klara Sanders Queen of the Campus.

THE affair was our Sophomore Hop on Valentine's Day. Enormous lacy, red satin hearts were borrowed from local window displays. And who remembers where we got the artificial grass mat for the wishing well? The funeral director was very generous—even to the point of leaving some wilted gladioli rolled up in it!

A crucial moment appeared. Knees knocked and teeth chattered as we awaited our interviews for the upper division. Then suddenly we were Juniors with Joseph Croffi as president. Our Christmas affair was a Junior Prom at the Four Towers. Dr. Baker was the "man of the evening." He blushing won the waltzing contest with a lovely entertainer as his partner.

Spring was ushered in with our April Showers Dance. That mysterious fortune-teller, Christine "Swami" Pepper, added the surprising touch to a lovely evening.

George De Causemacker guided us through that hectic Senior year—twelve weeks of practice teaching, yearbook work and money troubles, preparation for graduation, the wonderful trip to Washington, our Senior Ball, Baccalaureate, and Commencement.

Four years—oh, so long when facing them and yet so short in retrospect. There they loom—years of studying, and working for what we believe in, years of friendships and happiness, years of invaluable experiences, years of cherished memories.



YEARBOOK STAFF



MARY LOBOSCO

Editor-in-Chief

Joan Reed
Ida Beth Sietsema

Business Manager

Donald Raffetto

Photography Staff

Carol Greydanus—Editor
Donald Raffetto
Christina Pepper

Sports Editor

Vita Lancia

Art Staff

Barbara Gregory—Editor
Dorothy Ackerman
Marilyn Werner

Typing Staff

Joan Reed—Editor
Ida Beth Sietsema

RUTH NAROTSKY

RICHARD STACK

MARY BODNER

Literary Staff

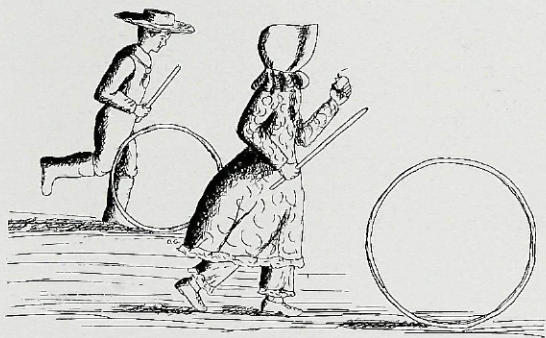
Tunis J. Bello—Editor
Jean Pasiaska
Joseph Cioffi
Joan Doyle
Doris Sumerson
Dulcie Grosskurth
Alfred Laue
Michael Urgo

Junior Class Representative

Sophomore Class Representative

Freshman Class Representative

UNDERCLASSMEN





JUNIOR CLASS

<i>President</i>	BILL WEISENHORN
<i>Vice-President</i>	GLENN LEACH
<i>Secretary</i>	JEAN TUSA
<i>Treasurer</i>	PETER WILD
<i>Advisor</i>	MISS MILDRED LEF



SOPHOMORE CLASS

President

JAMES LOMAURO

Secretary

DORIS MICKIEWIEZ

Vice-President

DAVID O'GRADY

Treasurer

JOHN ARATA

Advisor

MISS JULIETTE TRAINOR



FRESHMAN CLASS

President

Vice-President

EDWARD RIGOLO

HAROLD SEELEY

DONALD VAN DAM

Secretary

Treasurer

Advisor

ETHEL HERMAN

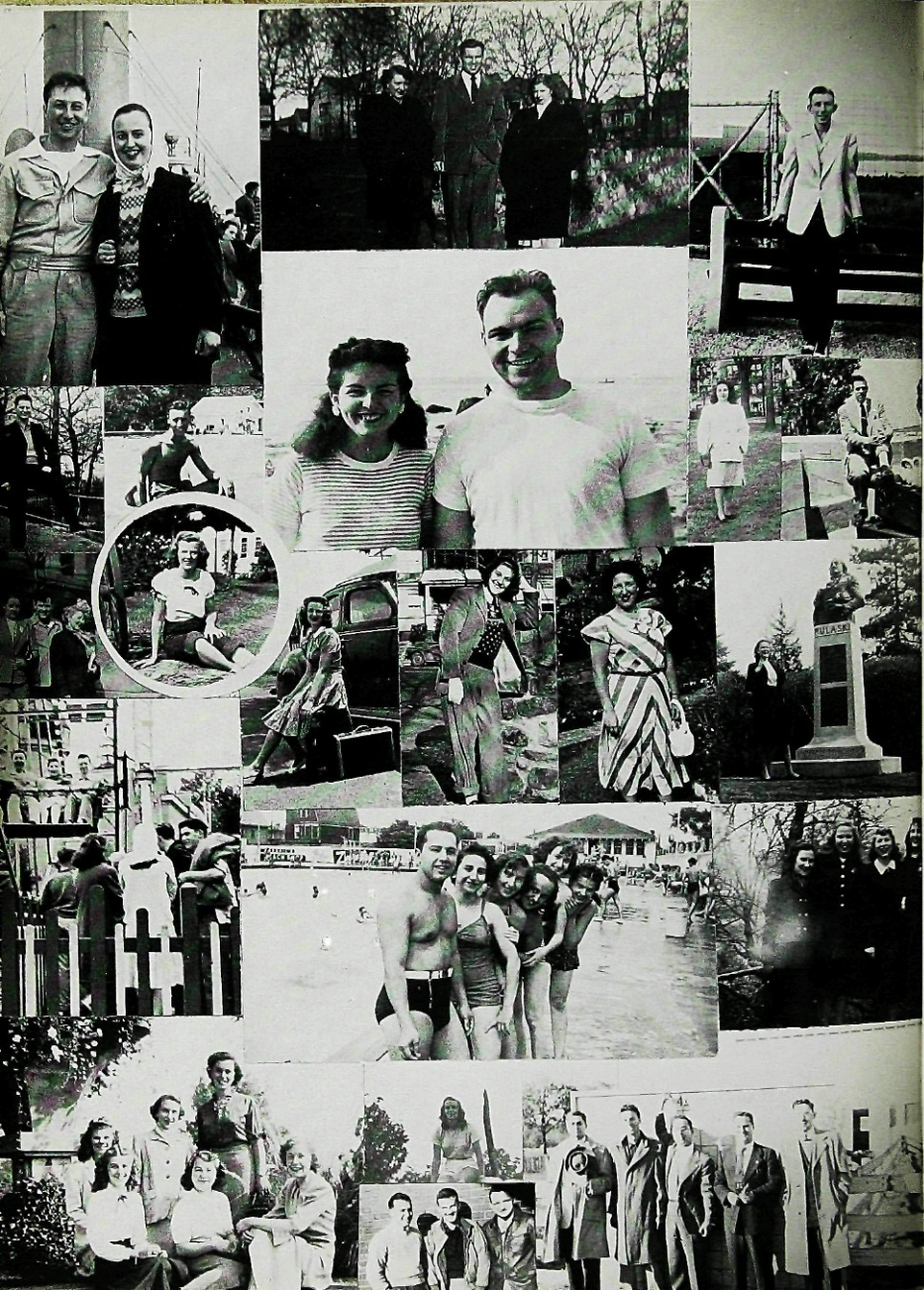
LOIS SCHULL

MISS CHRISTINA STROOP

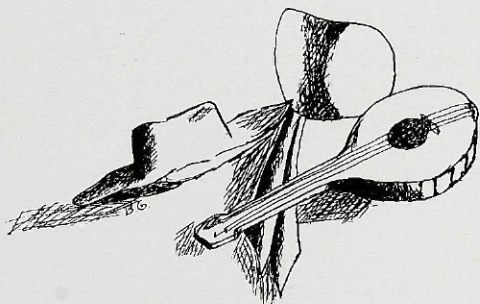








ACTIVITIES





PATERSON STATE
BEACON

Co-Editors-in-Chief

Mary Diamondis, Marvin Cohen

Feature Editor—Tunis J. Bello

News Editor Lawrence Ossi

Sports Editor Joseph Trione

Exchange Editor Virginia Moran

Business Manager.... Don Raffetto

Photography.....Pat Morone

Crossword, Vita Lancia,

Glenn Leach

CartoonistHarold Steindler

Advisor.....Miss Juliette Trainor



STUDENT
GOVERNMENT
ASSOCIATION

President.....John Donald

Vice-President — Richard Corallo

Secretary.....Ruth McGurk

Treasurer Kay Becker

Advisor—Miss Edith Jackson



PROKONS

President _____Murray Citron

Vice-President Donald Van Dam

Secretary _____ Rose Rigilioso

Advisor Mr. Benjamin Matelson

FUTURE TEACHERS OF AMERICA

President Miriam Gorman
Vice-President Blanche Andoujian
Secretary Ann De Spirito
Treasurer Anita Colucci
Advisor Dr. Mark Karp



PSYCHOLOGY CLUB

President Doris Simerson
Vice-President Dorothy Ackerman
Secretary-Treasurer Jean Pasinska
Advisor Dr. Louise Alteneider



PALATEERS

President Doris Nickells
Vice-President James Pescatore
Secretary-Treasurer Neva Houghtaling
Advisor Miss Marguerite Tiffany





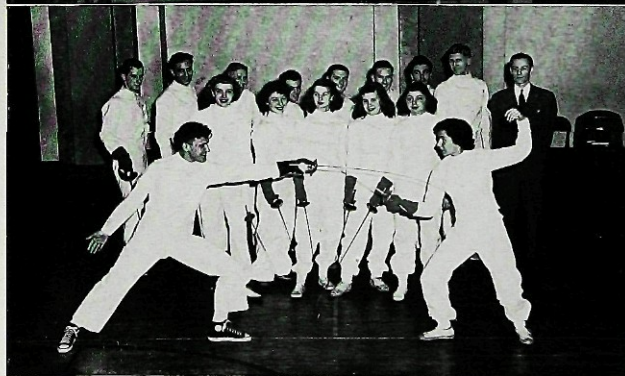
MIXED CHORUS

President ... William Weisenhorn
Secretary Gladys De Causemacker
Business Manager ... Peter Wild
Librarian ... Virginia Fraser
Accompanist ... Mary Sietsema
Advisor ... Mr Earl Weidner



GEOGRAPHY CLUB

President ... Vita Lancia
Vice-President ... Jean Brubaker
Secretary-Treasurer
 Blanche Andounian
Advisor ... Dr Edith R Shannon



SWORDS CLUB

Women's Captain ... Helene Vacvisotis
Men's Captain ... William Reda
Manager of Women
 Helen Webber
Manager of Men ... Frank Bezine
Coach ... Mr Raymond Miller

P & Q CLUB

President Jacqueline Baker
 Vice-President . . . Eileen Gorman
 Secretary Dorothy Byrnes
 Advisor . Miss Emily Greenaway



MASQUE AND MASQUERS

President Lee Pitea
 Vice-President . . . Glona Valenti
 Treasurer Virginia Pitea
 Advisor . Miss Emily Greenaway



RED CROSS

Chairman Wilma Bonnema
 Vice-Chairman . . . Blanche Andoulian
 Secretary Ruth McGuirk
 Advisor . Miss Christie Jeffries





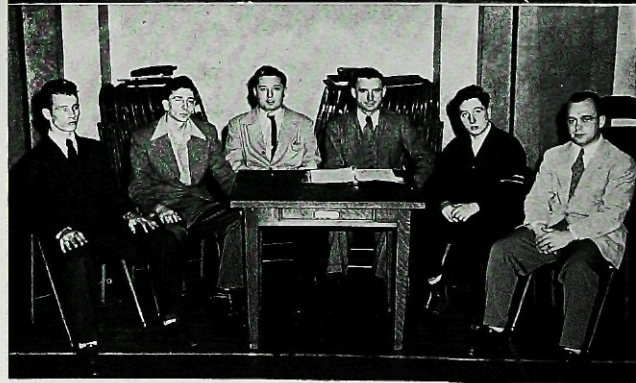
OUTDOOR EDUCATION CLUB

President Janet Wheeler
Secretary-Treasurer Dorothy Schuralick
Historian Joan Dougherty
Advisor Mr. Eugene Vivian



DEBITS AND CREDITS

President Joseph Decker
Vice-President Marie Kimmick
Recording Secretary Gloria Abdelnour
Corresponding Secretary Winifred Cathey
Treasurer Joan Reed
Member-at-large Ann De Spittito
Advisor Miss Christine Stroop



DEBATING CLUB

President Lee Hrzuda
Sec. Treas. Harold Seely
Advisor Dr. Ralph Miller

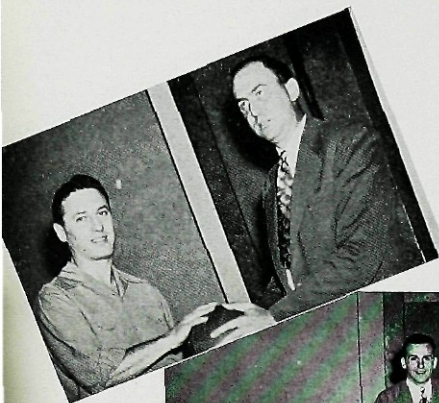


KAPPA DELTA PI

President	MYRTLE PAVLIS
Vice-President	ADA SKURATOFSKY
Secretary	JEAN AHLERS
Treasurer	JUNE CARRANO
Historian	EVELYN MOTT
Faculty Advisor	LOUISE ALTENER

WHO'S WHO IN COLLEGES AND UNIVERSITIES

Frank Zanfino, William Wiesenborn, Mary Lobosco, Joseph Serra, John Donald, George De Causemacker, Dorothy Dietrich, Joan Reed, Richard Corallo, Jean Pasinska and Joseph Cioffi



MEN'S VARSITY CLUB

Ralph Jackson George Schroers
 Michael Spinelle Lionel Clifford Joe Isch
 Advisor—MR. HENRY SCHMIDT

MEN'S BASKETBALL TEAM

Dario Pia Sellwyn Jacobs
 Cody Thompson Don Van Orden
 Allan Goldberg Michael Spinelle
 George Schroers Ray Zineski
 Ralph Jackson Vince Moretta
 Tom Donnelly Lionel Clifford

Norman Reichert

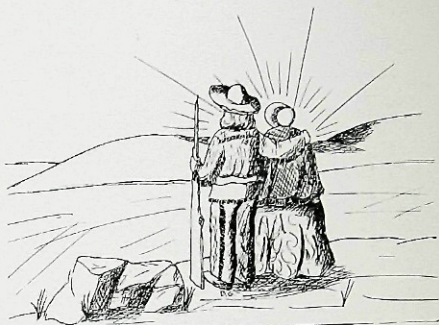
Coach MR. HENRY SMITH

Assistant Coaches PHIL RABIN, DAN JANKELUNAS



WOMEN'S ATHLETIC ASSOCIATION

<i>President</i>	EVELYN MULLER
<i>Vice-President</i>	MURIEL ACKERMAN
<i>Secretary-Treasurer</i>	PEGGY O'LEARY
<i>Point Chairman</i>	OLIVE WESTA
<i>Advisor</i>	MISS MILDRED LEE



CLOSING

There before you stretches the vast unexplored future. You have completed your four-year portage. Stand for a moment—scan the future's horizon. Don't just rush forward blindly. There is a glory in each day's living which is lost to those who rush and push through their days. A dream precedes the action. Give those highest thoughts which cause your spirit to sing, an opportunity to cause your hands to create.

Your supply of truth, wisdom and humor has been carefully weighed and kindly balanced. With these ready tools step forward humbly, yet eagerly, to meet the hazards and glory of a new frontier.

Your debt to the past pioneers who paved your way and to those who will follow can only be met by your faithful adherence to your highest ideals. Don't allow your sight to become clouded by self-ambitions or petty rivalries or you will lose your way.

The trail has not been marked. The road to the future will be of your making. You blaze the trail, you fall the stumbling blocks, you pave the way. The durability and beauty of this future path is yours.

Go—with sure step and glad heart

DOES
NOT
CIRCULATE

For Reference
Do Not Take
From the Library



Folio

66174

LB

New Jersey. Paterson State

1915

Teachers College, Paterson

.P3

Yearbook

A1

1949

c.4

