

THE
PIONEER
1941

Col.

5

1

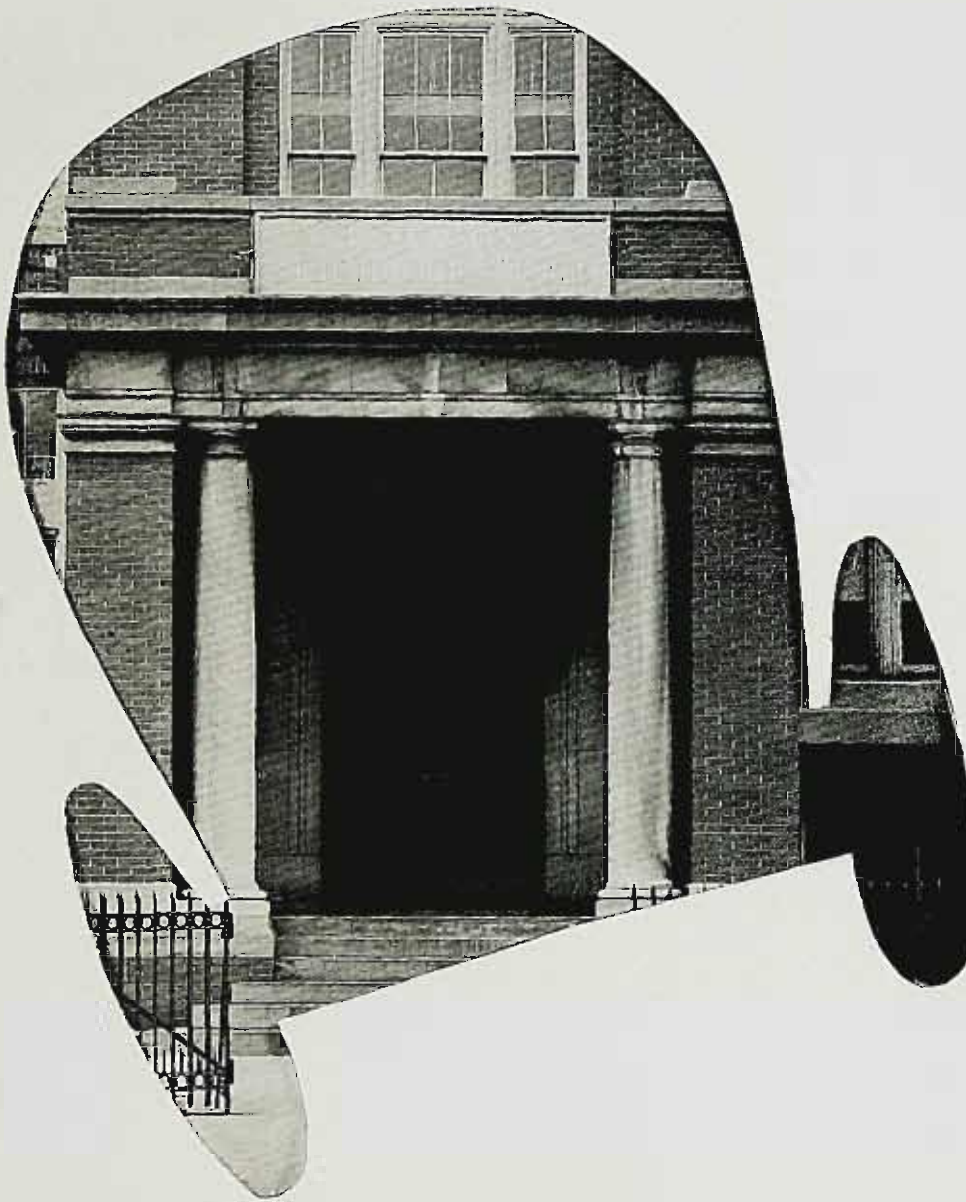
Sarah Byrd Askew
L I B R A R Y



WILLIAM PATERSON COLLEGE
WAYNE, NEW JERSEY

Clara A. Wightman

THE PIONEER



STATE TEACHERS' COLLEGE
PATERSON, N. J.

1941

"Ever forward, never backward," thus the PIONEER deigns to aid our college in attaining the finest and highest of achievements. May this PIONEER, paving the trail for the ensuing PIONEERS, some day occupy an honorary place in the new library building of the beautiful State Teachers College at Paterson.



Forward!

Our Guide

Dr. Louise E. Alteneder—without whose cheerful cooperation the PIONEER could not have been consummated.

Sp. Col.
LB
1915
P3
A1
1941
C.7



The Pioneer Staff



Ralph E. Smith
Co-Editor in Chief



Pauline Gagliardi
Co-Editor in Chief



Margaret Lemieux
Literary Editor



E. Alice Sheldon
Art



Kathryn George
Art Editor



Mary Boyle
Art



Kenneth Mahood
Photography



Mildred Schmidt
Business Manager



Margaret Isch
Literary



Margaret Buckley
Literary



Katharine Bannoch
Literary



Elizabeth Smith
Literary



Eleanor Wild
Literary



Edytha Parcel
Literary



Claire O'Meara
Business



Lillian Drake
Business



Louis Sirota
Literary



Ruth Bartow
Literary



Mary Wheeler
Business



Meriel Wilson
Business

FACULTY



The President's Message

The Senior Class of 1941 is in many respects the best class that has been graduated from the Paterson State Teachers College in the last ten years.

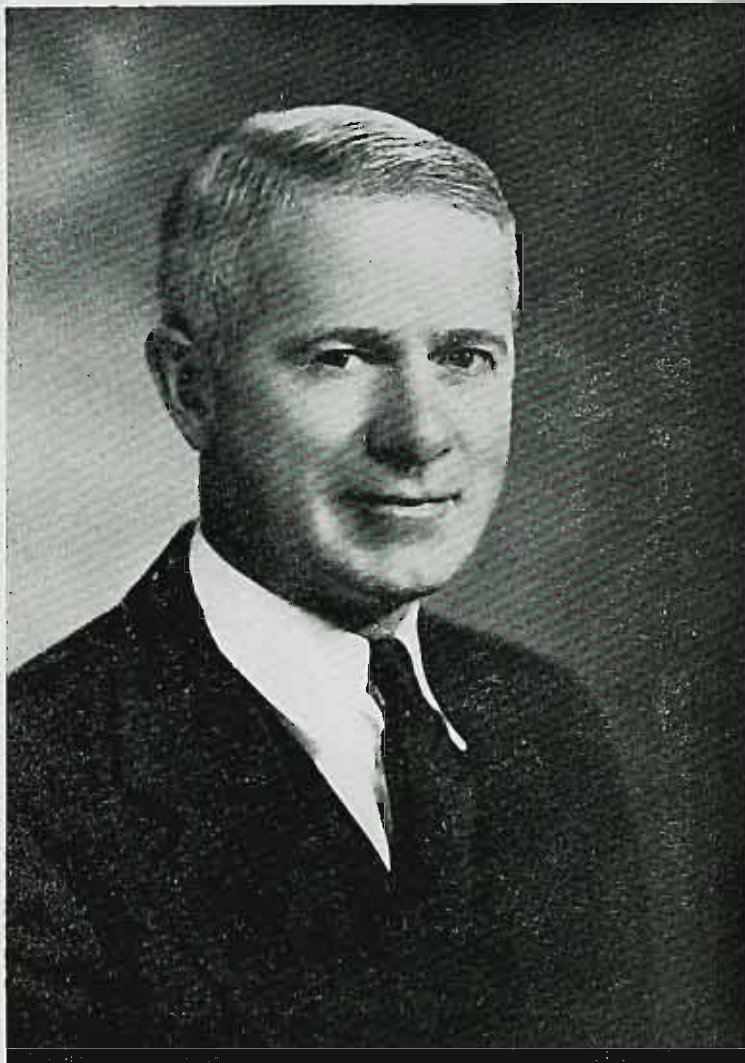
We know that you have been selected carefully and we expect you to make great achievements. We have infinite confidence in you. You will not always succeed in everything that you attempt but ultimately you are scheduled for success. You must never lose confidence in yourself and we promise you that we will assist you to the limit of our ability in the attainment of each commendable objective that you formulate for yourself.

We urge you to return to your college throughout the years ahead, meet with us for the social and educational activities of your institution. If you move to other communities, write to us and let us know about your activities and achievements.

We are interested in every one of you and want you always to retain kind and pleasant memories of the years spent at Paterson State.

C. S. WIGHTMAN,
President

May 15, 1941



CLAIR S. WIGHTMAN, Ph.D.
President



EARL L. WEIDNER
Music



HELEN LOFTUS
Nurse



MARK KARP
English



DOROTHY A. ABRAMS
Librarian



WILLIAM H. HARTLEY
History



ROBERT E. WILLIAMS
History



HENRY E. SCHMIDT
Physical Education



EDITH R. SHANNON
Geography



BENJAMIN MATELSON
History



MARGUERITE B. TIFFANY
Fine Arts



GORDON E. MATTHEWS
Mathematics



DONALD O. THOMAS
Business



CHRISTIE JEFFRIES
English



LAWRENCE E. LOVERIDGE
Science



ALICE MIHLEIS
Library Assistant



EDITH L. JACKSON
Education



HERBERT W. ROEHLER
Languages



TUNIS BAKER
Science



SAMUEL P. UNZICKER
Science



LOUISE E. ALTENEDER
Education



CHARLES E. STENZ
Mathematics



KENNETH B. WHITE
Psychology



JULIETTE TRAINOR
English



LILLIAN M. HOPPER
Physical Education



RUTH C. ROGGE
Recorder

CARL E. SNEDEKER
Business Agent

ISABELL R. BOER
Senior Clerk

SYLVIA C. TUCHMAN
Stenographer

BERTHA M. TYRREL
Treasurer

SENIORS



WILLIAM RISSER
President



JEAN MCALEVY
Vice-President

The Class Officers



FRANCES VAN KIRK
Secretary



WENDELL WILLIAMS
Treasurer

EDITH GERTRUDE ATKINSON

74 Heights Road, Allendale

Ramsey High School '37

P and Q, Art Club, Geography Club.

Few people really know quiet "Edy". Investigation showed she is interested in Sunday School work and children of all ages.



Pompton Lakes

KATHARINE ELIZABETH BANNEHR

"Kay"

Oakland, N. J.

Pompton Lakes High School '37

President of International Relations Club, Student Government, Psychology Club, P and Q Club, Intramural Debate, Yearbook Staff, Who's Who Among Students in American Colleges.

It's not What Katharine can do? It's What can't she do! As for congenial disposition, keen thoughts, and deep sense of humor—she's tops.

ELIZABETH DAISY BARTON

75 Barrows Avenue, Rutherford, N. J.

Rutherford High School '37

President of Mixed Chorus, Co-chairman of Senior Social Committee, Masque and Masquers, To Kalon Sorority.

Betty is a versatile person. She knits, paints, and acts, and still has time to teach Sunday School and be a camp counselor.



Radburn



RUTH F. BARTOW

51 Willard Avenue, Totowa Borough
Central High School '37

Yearbook Staff, P and Q Club, Psychology Club,
Section Leader, Operetta, Treasurer of Junior
Class, To Kalon Sorority.

*Are you in need of sympathy and understanding?
You can depend upon Ruth for it.*

Ramsey

MARJORIE HELEN BEAM
"Marge"

85 Planten Avenue, Prospect Park, N. J.
Central High School '37

Treasurer of Freshman Class, Chairman of Social
Committee, Psychology Club, P and Q Club, Glee
Club, Operetta, To Kalon Sorority, Who's Who
Among Students in American Colleges.

*Verve characterizes "Marge". Dancing, swim-
ming, and knitting occupy her spare moments.*



Prompter Saker.



NICHOLAS BEVERSLUIS

190 Westervelt Avenue, Hawthorne, N. J.
Central High School '37

Who's Who Among Students In American Col-
leges, President of Sophomore Class, Vice-
President of Student Government Association,
Assembly Committee, Glee Club, Board of
Director of Alumni Association, Skull and
Poniard Fraternity

*Diplomatic Nick ironed out many difficulties in
Student Council. The assembly programs and
the operettas will miss his musical fingers.*

JUNE HARRIET BOHREN

81 North 14th Street, Prospect Park, N. J.

Central High School '38

Chairman of Calendar Committee, Student Government Association, Librarian of Glee Club, Mixed Chorus, Section Leader, Co-chairman of Senior Funds Committee, To Kalon Sorority, Operetta.

*Resourceful, efficient, and neat—that's June.
She's a teacher, first, last and always.*



Ridgewood



MARY GERTRUDE BOYLE

230 Harding Avenue, Clifton, N. J.

Clifton High School '37

Service Committee, Yearbook Staff, P and Q Club, Psychology Club, Phi Omega Psi Sorority.

*She is sweet and quiet with a dash of tilted nose.
Mary enjoys action—especially dancing, swimming, horseback riding, and driving.*

MARGARET MARY BUCKLEY

"Peggy"

808 Hollywood Avenue, Ho-Ho-Kus, N. J.

Ridgewood High School '37

P and Q Club, Psychology Club, International Relations Club, Corresponding Secretary of Girls' Sports Club.

Do you know that Peggy waits all winter for the opening day of baseball season? Faithfully she follows every move of her "heroes", until the last ball is pitched in the World's Series.





ROSE CAROLYN CARIFI
"Chic"

70 Cambridge Avenue, Garfield, N. J.
Garfield High School '37

President of Italian Club, Captain of Girls' Basketball Team, Mixed Chorus, Women's Glee Club, Psychology Club, Operetta.

Very few things bother Rose. She has one peeve—people who refuse to smile. Her ambition is to be a smiling teacher in a one-room school house.

GLADYS JEAN CHAMPIN
1128 Main Avenue, Clifton, N. J.
Clifton High School '37

Geography Club, Glee Club, P and Q Club, Psychology Club, Operetta.

Glad and her giggle—mention one and you have the other. From what we hear, visual aids are her forte.



LILLIAN CHAPLAIN DRAKE
"Lil"

281—17th Avenue, Paterson, N. J.
West New York High School '37

Psychology Club, Geography Club, Beacon Staff, Yearbook Staff, P and Q Club.

Who will lead them? Lillian will, in the role of teacher, story-teller, and children's librarian.



Oakland

PAULINE ROSE GAGLIARDI

"Paul"

57 Summit Avenue, Lyndhurst, N. J.

Lyndhurst High School '37

Co-Editor of Yearbook, P and Q Club, Psychology Club, Secretary of Junior Class, Corresponding Secretary of International Relations Club, Madrigals, President of Women's Glee Club, Phi Omega Psi Sorority, Student Government Association.

Tiny "Paul" sings! That's all we have to say. Pauline enjoys collecting old books, and wants to be a reading demonstrator.



KATHRYN C. GEORGE

"Kay"

122 Arlington Avenue, Clifton, N. J.

Clifton High School '37

Masque and Masquers, International Relations Club, Basketball, Italian Club.

Drawing and writing are open roads to Kay. She wants to write a psychological novel, someday. We'll be waiting for it.

RUTH FRANCES HANNA

"Ruthie"

26 Ely Place, East Orange, N. J.

Appleton High School, Wisconsin '36

Lawrence College, Wisconsin

Interclass Debate, Accompanist for Glee Clubs and Operetta, Madrigals, Zeta Kappa Chi Sorority.

Wisconsin is responsible, Paterson is delighted. Red hair and a pianist, creamy complexion, and early morning walks—that's Ruth.



Ridgewood



Parsonage

AGNES JANE HOEY
688 East 25th Street, Paterson, N. J.
Eastside High School '37

P and Q Club, Psychology Club, Glee Club, International Relations Club.

Calm, and little to say, Agnes has ably demonstrated that much can be accomplished without ostentation. This ambitious person hopes to engage in Social Service.

MARGARET LOUISE ISCH
"Marge"

359 West 2nd Street, Clifton, N. J.
Clifton High School '37

President of Psychology Club, Who's Who in American Colleges, Student Council, Glee Club, Operetta, Program Committee, Activity Committee of Senior Class, Yearbook Staff, Geography Club, To Kalon Sorority

"Busy as a bee" may have been coined for "Marge". It's a wonder she has time for fun with all her many interests.



Morris Plain



Rivers Edge

BARBARA YOUNG LEE
"Bobbie"

149 Queen Anne Road, Bogota, N. J.
Teaneck High School '37

Assembly Committee, Social Committee, Geography Club, Section Leader, Operetta.

Meet the girl with the complexion! Bobbie's talents as a hostess have the "welcome" worn off the doormat.

WILLIAM LEE

683—25th Street, Paterson, N. J.

Eastside High School '37

Science Club, Vice President of Geography Club,
Psychology Club, Operetta, Glee Club,
Mixed Chorus.

*His rapid-fire conversations leave both listener
and speaker breathless. Bill's interpretations of
the "Conga" probably hindered the Good
Neighbor policy.*



MARGARET MARY LEMIEUX

"Marge"

131 Manchester Ave., North Haledon, N. J.

St. Mary's High School '36

Associate Editor of Beacon, International Relations Club, Literary Editor of Yearbook, Zeta Kappa Chi Sorority.

After the clock hand has jumped, Marge arrives! Her carefree manner is the envy of her fellow students. Give her a piano and she becomes a musician.

JEANNETTE LEVY

"Jeeps"

265 Fair Street, Paterson, N. J.

32 Oakland Avenue, Long Branch

Long Branch High School '37

Monmouth Junior College

Mixed Chorus, Women's Glee Club, Operetta,
Italian Club, Madrigals.

Her jokes are so funny Jeannette laughs at them herself. Jeannette hopes to teach and to get married some day.





KENNETH MAHOOD

"Ken"

556 Market Street, Paterson, N. J.

Eastside High School '37

President of Men's Glee Club, Varsity Club, Baseball, Basketball, Student Government Association, Treasurer of Athletic Committee, Operettas,

Ken is our willing errand boy. Photography is his only hobby and he likes only one girl.

JEAN GLENNA McALEVEY

"Mac"

359 East 39th Street, Paterson, N. J.

Eastside High School '38

Vice President of Senior Class, Who's Who Among Students in American Colleges, Beacon, Archery, Women's Glee Club, Mixed Chorus Operetta, Phi Omega Psi Sorority.

Jean is the answer to a child's prayer for a good teacher. Sports and dancing are favorite pastimes.



CLAIRE O'MEARE

10-12 Bellair Avenue, Fair Lawn, N. J.

Eastside High School '37

Vice President of P and Q Club, Girls' Glee Club, Operetta, Fund Committee, Geography Club, Psychology Club.

Her friendliness is only exceeded by her helpfulness. Claire confesses to a liking for square dances.

Fairlawn

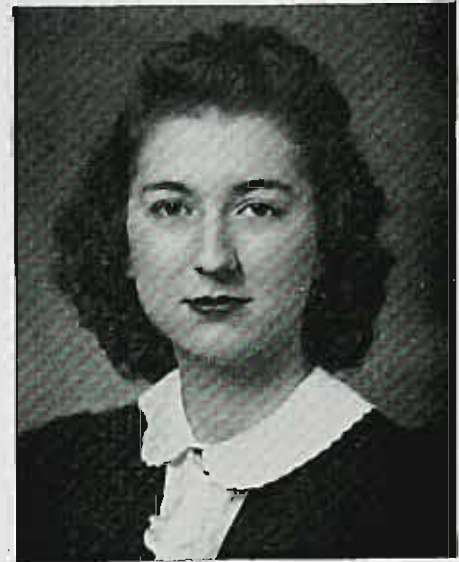
EDYTHA MARIE PARCELL

33 Bartholdi Avenue, Butler, N. J.

Butler High School '37

Psychology Club, Geography Club, Washington
Trip Committee, Yearbook Staff, Phi Omega
Psi Sorority.

*Always smiling "Ed" is the sweetheart of six
other fellows. She loves to dance, especially
the "Conga".*



MORRIS PRESSMAN

"Press"

39 Carroll Street, Paterson, N. J.

Central High School '36

Basketball Team, Varsity Club, Operetta.

*"Press" is the eternal boy. No one will forget
the faces he made to amuse us during dull classes.
"Press" hopes to become a Physical Education
Instructor.*

WILLIAM HENRY RISSE

10 Doremus Street, Paterson, N. J.

Central High School '37

Glee Club, Operetta, Editor of Beacon '39, Activity
Committee, Intramural Softball, Skull and Pon-
iard Fraternity, President of Senior Class.

*Level-headed Bill couldn't be otherwise, to be
President of the Senior Class.*





AILEEN ROHRS

897 Garrison Avenue, Teaneck, N. J.

Teaneck High School '37

Berger Junior College '39

International Relations Club, Masque and Masquers, Cheerleading Squad, Phi Omega Psi Sorority.

This peppy cheerleader enjoys dancing, swimming, and reading. She is very much interested in the Social Studies.

HAZEL MARY RUDOLPH

194 Myrtle Avenue, Allendale, N. J.

Ramsey High School '37

P and Q Club, Art Club, Geography Club, Student Council, Psychology Club, Senior Ball Committee.

Hazel has a penchant for the military. Her endurance as a knitter is remarkable.



JEAN ELIZABETH SAMPSON

"Sammy"

Loy Avenue, Riverdale, N. J.

Butler High School '37

International Relations Club, Masque and Masquers, Italian Club, Psychology, P and Q Club, Basketball.

Where Jean is, there is Aileen. Jean wants to travel—longer distances than from Riverdale to Paterson

MILDRED MAY SCHMIDT
353 Lake Avenue, Lyndhurst, N. J.
Lyndhurst High School '37

Business Manager of the Yearbook Staff, Field Trip Committee, Athletic Committee, Operetta, Psychology Club, Phi Omega Psi Sorority.

Ask Milly—she knows all the answers to mathematical problems. Reading and stamp collecting are favorite pastimes and she likes Chinese Culture.



E. ALICE SHELDON
Hepburn Road, Clifton, N. J.
Clifton High School '37

Glee Club, Operetta, Psychology Club, Secretary of Art Club, Athletic Committee, Senior Trip Committee, Yearbook Staff.

Need another car for a field trip? Want the address of a boy at camp? "Al" will supply both. She even likes to write letters.

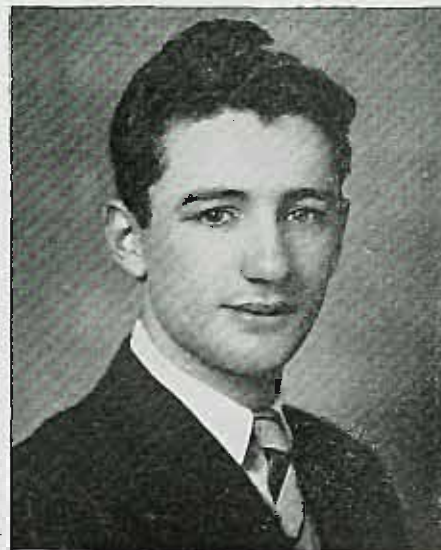
Butler

LOUIS Y. SIROTA
"Low"

669 East 24th Street, Paterson, N. J.
Eastside High School '37

Basketball captain, All-State Teacher's Basketball Team, Baseball, Varsity Club, Operetta, President of Junior Class, Student Government Association.

Lou and basketball—they are inseparable. His other pastime is stamp collecting. Someday he hopes to become a principal.





ELIZABETH MAE PATRICIA SMITH

50 Union Boulevard, Wallington, N. J.

East Rutherford High School '37

Glee Club, Yearbook Staff, Mixed Chorus, Beacon, Student Government Association, Publicity Chairman of Freshman and Senior Classes, P and Q Club, Phi Omega Psi Sorority.

"You haven't lived yet!" says Betty when she recommends something you haven't experienced. She's what the Doctor ordered for drooping class situations.

RALPH EDWARD SMITH

377 Clifton Avenue, Clifton, N. J.

Clifton High School '37

President of Freshman Class, Treasurer of Student Council, Editor-in-Chief of the Beacon, Co-Editor of Yearbook, Manager of Basketball Team, Geography Club, Who's Who Among Students in American Colleges.

Just give Ralph an argument. He'll take whichever side is free. His photography is on a professional level—especially the pictures of the Washington trip.



CHARLES SPINOSA

"Chuck"

R. D. No. 1, Ridge Road, Wayne

Central High School '37

President of Geography Club, Associate Editor of Beacon, Skull and Poniard Fraternity, Manager of Baseball.

The pride of Geography Club and Visual Aids class! Chuck scored a direct hit with his electric map. He is intensely interested in people and camping.

FRANCES MERLE VAN KIRK
786 East 22nd Street, Paterson, N. J.
Eastside High School '38

Secretary of Senior Class, Who's Who Among Students in American Colleges, Chairman of Service Committee, Basketball, Archery, Glee Club, Intramural Debate, Phi Omega Psi Sorority.

Are there any girls' sports Fran hasn't tried? Fran completes her college career in three and one-half years.



Florian Fair.

ANNE VROOM

21—22nd Avenue, Paterson, N. J.
Eastside High School '38

Secretary of Student Government Association, Chairman of Assembly Committee, Chairman of Sophomore Hop, Madrigals, Mixed Chorus, Glee Club, Operetta, Who's Who Among Students in American Colleges, Phi Omega Psi Sorority.

An important reason for Anne's popularity is her constant participation in school activities. Her secret ambition is "to have my class come to school because they really like to. Show them there's fun in going to school".

MARY EDWINA WHEELER
22 Fredericks Street, Wanaque, N. J.
Butler High School '37

International Relations Club, Psychology Club, P and Q Club.

Thoroughness in tackling any job, is Mary's outstanding trait. Aside from collecting stamps and reading widely, she is a very active Sunday School teacher.





ELEANOR CECELIA WILD

"El"

300 McBride Avenue, Paterson, N. J.

St. Bonaventure's High School '37

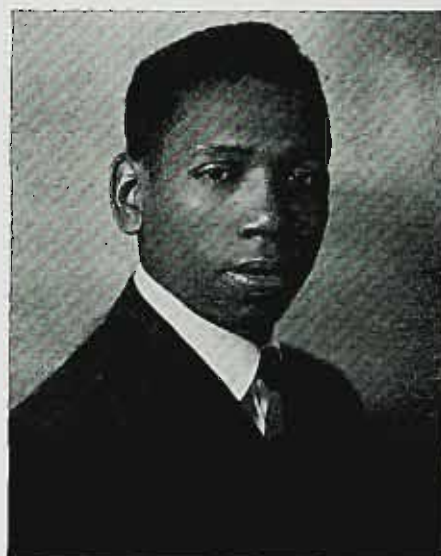
President of P and Q Club, Psychology Club, International Relations Club, Student Council, Chairman of Eligibility Committee, Co-chairman Senior Activity Committee, Section Leader, Who's Who Among Students in American Colleges, Yearbook Staff.

Imitating people is her speciality. As for conscientiousness, cooking, and talking—El can't be beat!

WENDELL JOHN WILLIAMS
180—12th Avenue, Paterson, N. J.
Eastside High School '37

Varsity Basketball, Varsity Baseball, Varsity Club, Recording Secretary, Treasurer of Senior Class, Glee Club.

Why did he wait so long before allowing his excellent tenor voice to be discovered? Wendell is our easy, effortless basketball player.



MERIEL ANDERSON WILSON
"Willy"

110 Barkley Avenue, Clifton, N. J.

Clifton High School '37

Glee Club, Operetta, Psychology Club, Yearbook Staff, P and Q Club, To Kalon Sorority.

Variety of moods make Willy a colorful personality. She has two loves—dancing and fun!



River Edge



DOROTHY YADOFF
"Dotty"

405 East 31st Street, Paterson, N.J.
Eastside High School '38

International Relations Club, Psychology Club,
Glee Club, Intramural Debate.

*Dotty talks so much at lunch that she almost
forgets to eat. She represented the Seniors well
in an Intramural Debate.*

PATRONS

MR. AND MRS. ROBERT BUCKLEY

MR. AND MRS. FREDRICH CIANCI

MR. AND MRS. SAMUEL BAKER

MR. AND MRS. P. BEVERLY

MR. AND MRS. JAMES DOKAR

MR. AND MRS. J. GAGLIARDI

MR. AND MRS. FRED GEORGE

MR. AND MRS. N. GROENEWAL

MR. AND MRS. JOHN HANGLEY

MR. AND MRS. B. LEVY

DR. AND MRS. SAMUEL MAHOOD

MR. AND MRS. A. MARCIGLIANO

MR. AND MRS. RUSSELL ZITO

THE TRAIL OF EVENTS

The Narrative

CLASS EVENT

Sept. 15, 1937
P.S.T.C. ADMITS
NEW FRESHMEN

Green and Scared as Usual

October 27, 1937
FRESHMEN WELCOMED WITH
DANCE AT SCHOOL NO. 15

Frolic Helps Still Green Class To Become
Acquainted

Sept. 29, 1938
PROUD AND REVENGEFUL
SOPHOMORES INITIATE
THE NEW FRESHMEN

Grand Parade To City Hall

December 9, 1938
SOPHOMORE HOP—FIRST
BIG EVENT OF CLASS '41

Everyone Danced?

June 15, 1939
SOPHOMORES TO RECEIVE
ACHIEVEMENT CERTIFICATES

Finishes Two Years College Course; Cere-
monies On Steps of College

October 10, 1939
NEW JUNIORS MAKE
SOCIAL CALL

Dr. Alteneder, Class Adviser,
Hostess At Apartment

December 1, 1939
JUNIOR PROM AT WHITES
BEECHES COUNTRY CLUB

Biggest Dance of Year

WORLD EVENT

Sept. 15, 1937
U. S. OWNED SHIPS
FORBIDDEN TO TAKE
ARMS TO FAR EAST

October 27, 1937
MUSSOLINI TO BACK GERMANY'S
EFFORTS TO REGAIN COLONIES

Tell Fascists Communism Must Be Driven
From Spain, Then Europe

Sept. 29, 1938
HITLER HALTS WAR MOVES;
CALLS 4-POWER CONFERENCE

Meets Mussolini, Chamberlain And
Daladier Today

December 9, 1938
HULL WARNS PEACE CANNOT
BE SECURE ON REGIONAL BASIS

Pan-American Conference Opens Today

June 15, 1939
DANGERS OF CLASH GROWS
IN BLOCKADED TIENTSIN

Food Embargo Broken

October 10, 1939
NAVAL BOARD SPEEDS
PLAN FOR NEW BASES

Survey Made of Coasts of U. S., Alaska,
And Insular Possessions

December 1, 1939
FINN'S CABINET RESIGNS
AS SOVIET BOMBS CITIES

New Government Expected To Seek Truce

CLASS EVENT

Fall, 1940
PRACTICE TEACHING BEGINS

November 4, 1940
SENIORS HAVE FIELD
TRIP; VISIT PROGRESSIVE
SCHOOLS IN N. Y. C.

First Field Trip Class Is Together

November 20, 1940
COLLEGE MEETS EN MASSE
FOR THANKSGIVING DINNER

Seniors Remember It Is Last Dinner
Together

April 25, 1941
SENIORS RAISE MONEY FOR
TRIP WITH CARD PARTY

May 4, 1941
EXCITED SENIORS LEAVE
FOR WASHINGTON

Two Chaperones—Dr. Altender And
Dr. Hartley

May 5, 1941
SENIORS GAPE AND GAPE;
MANY PICTURES TAKEN

May 6, 1941
MORE GAPING; FEET
RECEIVE AWFUL BEATING

Chaperones Look And Wonder

May 7, 1941
SORROWFULLY, TIRED
SENIORS PREPARE TO
LEAVE WASHINGTON, D. C.

June 13, 1941
CLASS OF '41 HOPES TO
GRADUATE EVEN THOUGH
IT IS FRIDAY THE 13

WORLD EVENT

Fall, 1940
WAR — MORE WAR

November 4, 1940
GREEK MT. LINE HOLDS
BACK FASCISTS AS
BOMBS ROCK CITIES

Advance Into Albanian Territory Reported

November 20, 1940
BOMBS RAIN ON BIRMINGHAM;
MAY SUFFER COVENTRY'S FATE

Nazis' Planes By Hundreds Drop Tons Of
Explosives On British Munitions

April 25, 1941
HULL DECLARES "WAYS MUST
BE FOUND TO GET QUICK,
FULL AID TO BRITAIN"

May 4, 1941
26 AMERICAN SHIPS REPORTED
AT SUEZ LOADED WITH
MATERIAL FOR BRITISH

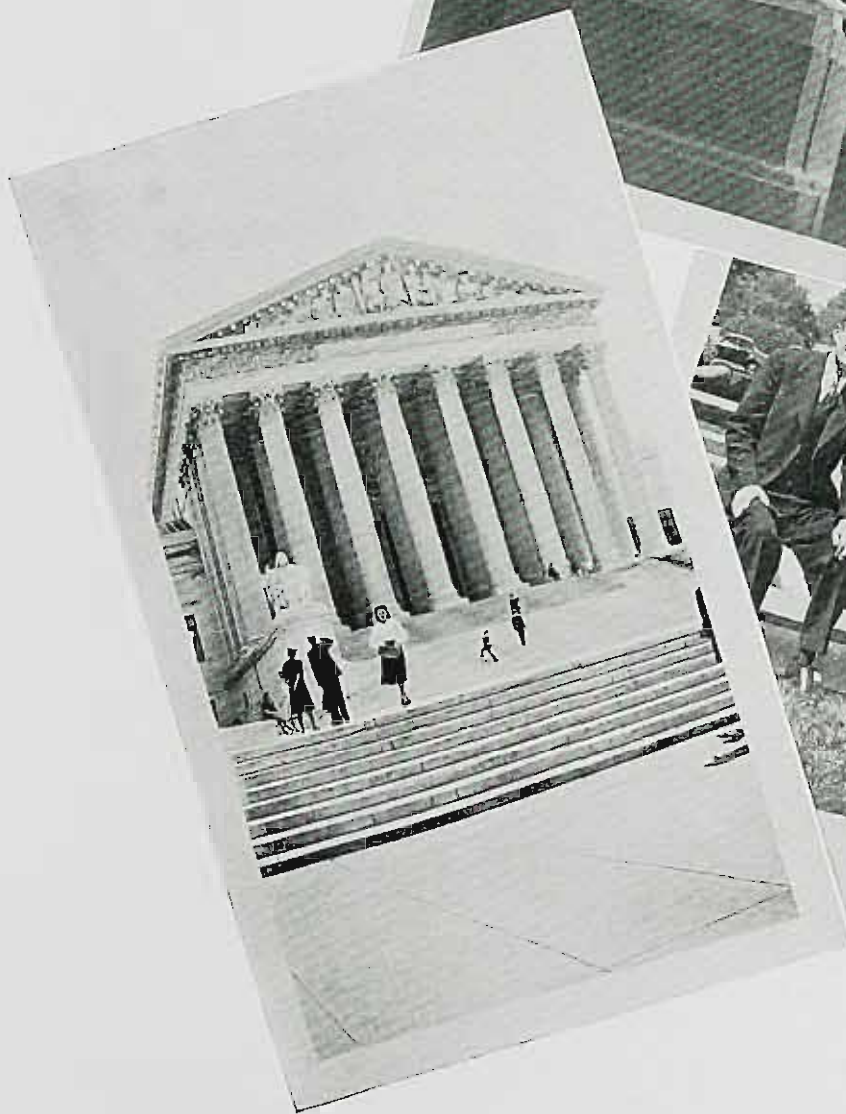
May 5, 1941
U. S. EVER READY TO FIGHT
PRES. ROOSEVELT SAYS

May 6, 1941
PRESIDENT ORDERS BOMBER
FLEET TO GIVE DEMO-
CRACIES COMMAND OF AIR

May 7, 1941
STIMSON CALLS FOR USE
OF NAVY TO ESCORT
SUPPLIES TO BRITAIN

June 13, 1941
FAIR TO PREDICT—
WAR CONTINUES





Our Will

We, the Senior Class of 1941, being physically decrepit and mentally deteriorated, do bequeath and bestow all our worldly and abstract goods in the following manner:

Ruth Bartow leaves her good humor to the bad humor man.

Kay Bannehr leaves her self confidence to anyone who needs it.

Lillian Drake leaves her work in the children's library to Dot Bundy.

Marge Lemieux leaves the Beacon in the capable hands of Margaret Patterson.

Peg Buckley leaves her weakness for baseball to Stanley Krakower.

Marge Beam leaves another Beam to support the school.

Edith Atkinson leaves her blush to Aurora.

Mary Wheeler leaves her easy-going manner to her many friends.

Ruth Hanna leaves that twinkle in her eye to Miss Tiffany.

Ralph Smith leaves the floor of the Student Council to Victor Christie.

Edytha Parcell leaves her zip to those who want to zoom as she does.

Rose Carifi leaves her I.Q. to Binet.

Bill Risser leaves his procrastination to Father Time.

Ken Mahood leaves his photo equipment to Rudy Klare.

Agnes Hoey leaves her cheerfulness to Dr. Alteneder.

Mildred Schmidt leaves the shelves of the Lyndhurst Library to gather dust.

Aileen Rohrs leaves her cheering to the squad.

Nick Beversluis bequeaths the keys of the piano to anyone who comes within a mile of his playing.

June Bohren bestows her teaching ability on anyone in practice.

Barbara Lee leaves that skin you love to touch to Kay McAllister.

Jeanette Levy leaves her jokes to liven dull moments.

Gladys Champin leaves her giggle in mid-air.

Betty Barton leaves her dramatic talents to the Masque and Masquers.

Alice Sheldon leaves some addresses for those who wish to write to the boys at camp.

Margaret Isch donates her 1001 duties to twelve other people.

Bill Lee leaves his mile-a-minute chatter to Mr. Weidner.

Claire O'Meara leaves her friendliness to the halls of Paterson State.

Betty Smith leaves her happy-go-lucky disposition to Dr. Hartley.
Dot Yadoff leaves her winning smile to the lucky winner.
Meriel Wilson leaves her shapely legs to Petty.
Eleanor Wild bestows her amiability on those who follow her.
Charlie Spinosa leaves his versatility in geography to Mildred Roe.
Anne Vroom leaves her cool sophistication to the freshmen who will
long for some next September.
Fran Van Kirk leaves her athletic versatility to Betty Driscoll.
Jean McAlevy leaves her sparkle to anyone in the doldrums.
Kay George, on behalf of Miss Tiffany, leaves her artistic ability
to the Juniors.
Pauline Gagliardi leaves future operetta leads to Lois McCarthy.
Wendell Williams leaves the basketball team with regrets.
Mary Boyle leaves her Irish grin to Mr. Snedeker.
Jean Sampson leaves her sociability to Esther Burns.
Hazel Rudolph leaves her industriousness to the Sophomores.
Lou Sirota leaves his swagger to Tom Cunningham.
Morris Pressman leaves Sirota.
The entire Senior Class just leaves.

We, the above-mentioned, appoint the student body of Paterson
State Teachers College executors of this, our last Will and
Testament, to see that these, our final wishes, are carried out.

CLASS OF NINETEEN HUNDRED FORTY-ONE

Witnesses:

Betty Smith
Ruth Bartow
Margaret Isch
Kay George

Futurama

SCENE—Annual boat races of P.S.T.C. on the banks
of the Passaic River.

Announcer: "It's a great day for the race, folks. Here we are at the start of the annual boat race between Paterson and the former champions, Washington State. Paterson is favored to win 3 to 1. Quite a crowd is gathered here to see Paterson row to another victory. Let's take a look at some of the spectators. Say, there's KEN MAHOOD with his battery of cameras ready to record the finish for posterity. Quite prominent in the crowd is RALPH SMITH, editor of the 'People's Press of Paterson,' a liberal paper, advocating free speech. With him is his old friend, CHARLES SPINOSA, the well-known foreign correspondent, whose new book, 'Dissertation on the Epicurean Tastes of the Tibetan Lama' bids fair to be a best seller.

"Let's take the portable mike for a walk around the grounds. Isn't the lady with the dark glasses, MERIEL WILSON, the movie star? Remember when she used to wear them because she was allergic? Her secretary, ALICE SHELDON, is her constant companion. EDYTHA PARCELL, over there, is the girl you see on all the billboards. Just behind her is MARGE LEMIEUX who has usurped Deems Taylor's place as commentator on the Sunday Symphony hour.

"We managed to catch MARGARET ISCH between plane time; she's the official guide of the U. S. Travel Bureau. She will tell you what to see in America and why. Under the shady tree is the former EDITH ATKINSON reminding her twins to take their boats out of the water before the race.

"See that crowd over on the side? That's MILDRED SCHMIDT's class on a field trip. Among the children is Nancy Lee Guyre, whose mother is the former BARBARA LEE. Her reputation as that of a hostess rivals that of Elsa Maxwell. MARY WHEELER, AGNES HOEY, and CLAIRE O'MEARA have just arrived. Of course you've heard about their new book, 'Googi of Eskimo Land,' which received both the Newbery and Caldecott awards?

"Look at the former BETTY SMITH, effervescent as ever behind her lorgnette and Pekinese. She's been a leader of Boston society for the past fifteen years.

"Strolling towards us is ANNE VROOM, arm in arm with a certain admiral. Anne, the toast of the town, is still packing them in at the Rainbow Roof. KAY GEORGE'S portrait of her, finally completed, now hangs in the National Art Gallery.

"Many of the Class of '41 arrived in town to attend the benefit show for the new swimming pool for Paterson State. (Imagine all this while they were struggling along with a common Vermont marble job. This time it's to be Pyrennees marble.) The hits of the show were MARGE BEAM, the famous Broadway dancer, and BILL LEE, the pianist, cafe

society claims for its own. A highlight on the program was the playing of that celebrated concert pianist, NICK BEVERSLUIS, just back from a whirlwind tour of the country. Speaking of music, there is PAULINE GAGLIARDI at the reviewing stand getting ready to lead us in the Alma Mater. Although she is very busy with her work at the Met, she always finds time to attend a P.S.T.C. function.

"Looking through her binoculars is that prominent sportswoman, PEG BUCKLEY. Yes, she's still rooting for the Yankees.

"The exclusive Eastside Academy for Girls is well represented today. Here's FRAN VAN KIRK, the dean, and KAY BANNEHR, head of the Social Studies department, and JEAN McALEVY, athletic supervisor.

"Here comes the crew in grand form. The bets are on WENDELL WILLIAMS, JR. to carry State to victory. He's following in his father's footsteps.

"Many of the class have entered the business world and conduct their own establishments. MARY BOYLE of the Fifth Avenue Beauty Salon caters especially to graduates of teachers' colleges; in a course called 'Humanizing the Graduate.' DOT YADOFF handles the personality angle. JEANETTE LEVY is quite the popular hostess at her Seaside Hotel in Long Branch. MORRIS PRESSMAN is now president of an international chain of shoe stores.

"The class is going back to State for its annual banquet after the race. ELEANOR WILD is chief dietician there. JEAN SAMPSON is the social director, a new department at State.

"Here comes HAZEL RUDOLPH, knitting an afghan, the same one she started while a senior. She's been so busy with family affairs that she never had time to finish it. And AILEEN ROHRS just drove up in her Rolls with her husband, Van de Veere the III.

"Over at the press box sits that well-known sports editor, LOU SIROTA. There beside him is ROSE CARIFI, editor of the woman's page, jotting down notes on what the well-dressed woman is wearing.

"Talking to the group of women on the other shore is GLADYS CHAMPIN, first grade teacher in one of the new consolidated schools. And there's RUTH BARTOW, the woman's ping pong champion of Totowa Borough. She practised twenty years to garner that title.

"Striding along just as rapidly as ever down there is RUTH HANNA who has managed to collect, by this time, one of the most extensive libraries of Rachmanioff's concertos in the U. S. JUNE BOHREN'S melodies on the organ are intriguing the patrons of the Radio City Music Hall especially since she claims to have found the 'lost chord'. BETTY BARTON, over there, is thrilling Broadway audiences anew with her interpretation of 'Joan of Arc.'

"Here comes LILLIAN DRAKE, the Story Lady, whose broadcast is eagerly listened to by the youngsters of America.

"The race is nearly over and guess who just arrived. It's BILL RISSER, one of our busier school superintendents.

"And there's the finish of the race, folks. And again State wins."



AFFAIRS OF STATE

Juniors



Sophomores



Freshmen



Phi Omega Psi Sorority

President.....Nettie McCann '39
 Vice-President.....Betty Driscoll '43
 Recording Sec'y.....Betty Driscoll '39

Corresponding Sec'y...Mary Boyle '41
 Treasurer.....Colette Siess '39
 Adviser.....Miss Lillian Hopper

*Nettie McCann '39
 *Mary Flanagan '39
 *Florence Williams '39
 *Evelyn Jackson '39
 *Ella Kiss '39
 *Colette Siess '39
 *Mrs. Wardel Tarry '39
 *Mrs. James Osar '39
 *Mildred Probert '39
 *Jean Leonard '39
 Dorothy Dockray '39
 Kim Stechert '39

Christine DeGhetto '39
 Elena Portadino '39
 Frances Duffy '40
 Jane Sadler '40
 Edytha Parcell '41
 Mary Boyle '41
 Mildred Schmidt '41
 Pauline Gagliardi '41
 Claire O'Meara '41
 Anna Mae Villeneuve '42
 Betty Driscoll '42
 Jean McAlevy '41

Aileen Rohrs '41
 Helen Tonge '42
 Frances Van Kirk '41
 Grace Cook '43
 Jean Matteson '43
 Edith Morris '43
 Marion Peck '43
 Betty Smith '41
 Pamela Tustin '42
 Ann Vroom '41
 Virginia White '43
 * *Charter Members.*

To Kalon Sorority

The To Kalon Sorority is the oldest organized sorority at the college, having been established in 1934. The purposes of the organization as specified in its constitution are to promote school spirit, to foster ideals worthy of progressive education, and to develop a social sense of responsibility through group activities.

When first organized, the enrollment consisted of nine members. The present enrollment is thirty-five.

The activities of the To Kalons are many. Among them are the annual preparation of Thanksgiving Baskets, their annual Carol Sing, and Christmas Party at Valley View Sanatorium. In the Spring, their big affair, a dance, takes place.

Each year the To Kalons contribute in a small way to a scholarship fund. They hope to increase this contribution in time. They have also created a special fund for the specific purpose of establishing a complete children's library. The selection of material is left to the very good judgment of Miss Abrams.

Zeta Kappa Chi

Three years ago ten students of Paterson State Teachers College, with the purpose of maintaining college friendships and having fun together, formed a sorority. Immediately these girls chose Dr. Alteneder as their faculty adviser. In a surprisingly short time, maroon and gold colors, and a scroll sorority pin were decided upon.

Zeta Kappa Chi meets monthly at the homes of the members to exchange hellos, bits of news, and of course to execute business. Every fall the members trek to Bear Mountain for a picnic, and in the spring enjoy a strawberry festival or roller skating party. Ice skating has also been enjoyed. Plans are now being made for the biggest event of the year—the June Dance.

The officers are: President, Mary McGuirk; Vice-President, Rose Sandell; Treasurer, Eleanor Wild; Secretary, Barbara Stouter.

Psychology Club

The Psychology club celebrated its eleventh anniversary this year. New members were welcomed by participating in the regular initiation ceremonies. The big occasion of the year, the Christmas Party, was enjoyed by everyone. To further interest in psychology, a trip was planned to visit the North Jersey Training School. The Training School actively applies psychology to assist in the proper care of the feebleminded, in New Jersey.

At the annual assembly program, the club presented a one-act Freudian comedy, "Suppressed Desires". In May, the meeting of the Association of the Psychology Clubs of New Jersey met at the Jersey City State Teachers College. Margaret Isch, representing Paterson, reported on the "Psychological Services Available in Paterson". For the benefit of the various psychology clubs of the other State Teachers Colleges, Paterson also gave a resume of the year's activities.

The Psychology club, which proudly boasts the largest membership of any club in the college, has had a very successful year both socially and educationally.

P & Q Club

For etiquette, and social poise
And all things a' propos,
The P and Q's the very club
For those who want to know
Just what to do, and how to do
In every situation:
It helps them through the social world
What e'er the complication.

So, Seniors dear,
If you are vexed
With doubts in days to come,
And much perplexed
By problems old or new.
Just give the P and Q a ring;
We'll be at your command
For wedding lore or wardrobe hints or
e'en a christening!



BI-WEEKLY PUBLICATION OF
PATERSON STATE TEACHERS

RALPH S.
Editor

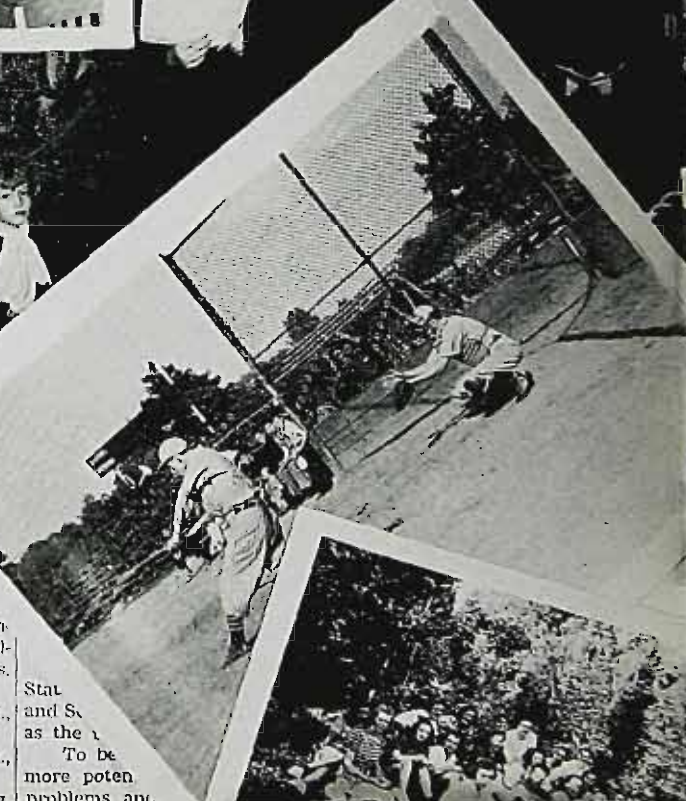
MARGARET PATTERSON
JOSEPH R. HUNTER
RUDOLPH K.
LOUISE W.



THE
With the
ing ineffectual
becoming a mo.
"Student Govern.
ate concerns of the
The Student Go
its mettle this year.
some of our pressing su
tuted a serious threat to
ing body. It has taken n.
plight in which State finds
/ee. It has closed its eyes to
ing room, and has not bother
which are an inner force to
and efficiently organized ass
dent body.

The Executive Committe
more or less seems to rely us
where legislation starts, has
wood.

The smoking room for th
College President pending ac
yet there has been no act
raised the cry to do so
it remains the sac
absent for more
are a great
selves
her



SPRI.

Each year we genera
that? Generally the arriva
ing hard on back homework,
vacations are far from a resting
mod, but a period in which

NOT
are required
prehensive examina
English, General Cul-
and Contemporary Affairs.
The schedule is as follows:
Monday, April 21, 9:00 A. M.,
English.
Monday, April 22, 12:30 P. M.,
Contemporary Affairs.
Tuesday, April 22, Morning,
regular classes.
Tuesday, April 22, 12:30 P. M.,
General Culture.
Room assignments for these

Stat
and S
as the
To be
more poten
problems and
conductive to
ground and
one to consid
By attending



Baseball Diamond

Turn As 15
On

ly
atly,
re re-
var var-
st year's
new candi-
d his call.

Return

position as star
Jankelunas, show-
ed form. Pressman
ping for a chance in
and will rest in the in-
ien not throwing to the
s. Back of the plate and
y to turn in a performance
ter than last year's, which
as good enough to earn him a
varsity berth, is Don Hall. Un-
derstudying the position is John
Duller, last season's dynamic re-
serve. Lou Sirota and Ben
Schultz fill the remaining var-
sity infield spots, and Seymour
Pollock completes the outfield
picture.

inter-
nated to
d movies
aging. It
t the fa-
I on the
ing bet-
has de-
fity by
milarity
purely

Syl-

Pollock completes the outfield
who come up from last season
are as follows: Don Nellis, at
the pitching spot; Joe Ford, in
the infield; and Floyd Van Kirk,
in an outfield berth. All three
have had plenty of experience
and very probably will see lots
of action in varsity positions
this spring.

Rookies Tryout

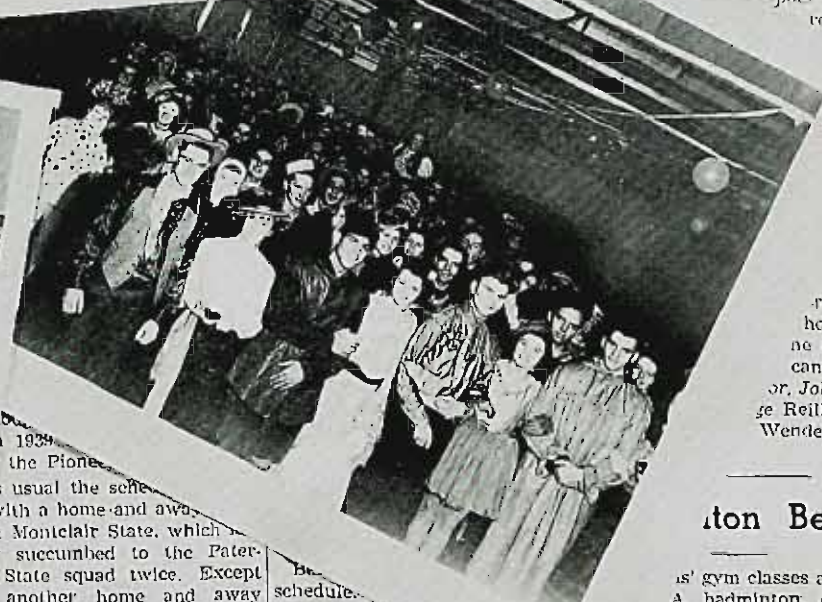
the fifteen rookies who
practice, the coach
spots on the
rest into
the

1
e;
er,
Vic
t for
ing a
Staple-
rge Has-
ho are as
ne remain-
candidates.
or, John Roe,
se Reilly, Gor-
Wendell Wil-

ton Begun

is' gym classes are at it
A badminton, doubles
ment has begun under
adership of Frances Tael-
who wields a wicked racket.
tournament, which will take
out four weeks to complete,
has been accepted with ardent
enthusiasm by those particip-
ating. As this contest has no
admission charge for the con-

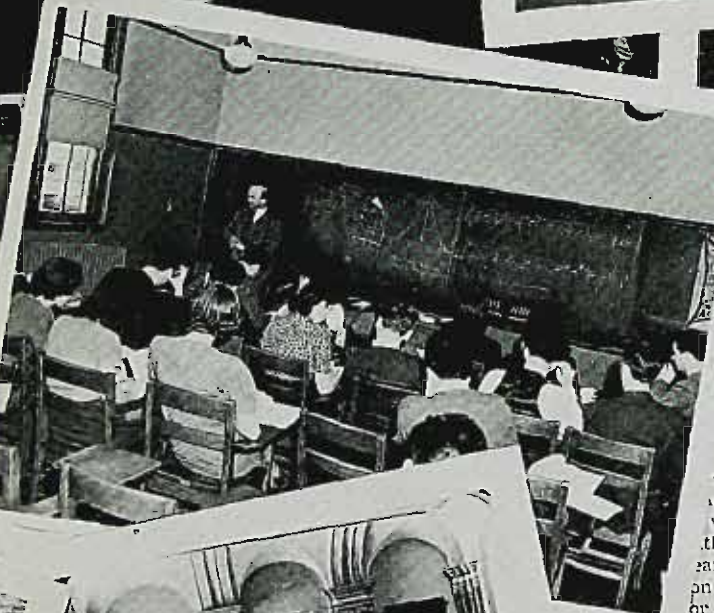
Annis Re Varsity



1934
the Pione-
is usual the sche-
with a home and away
th Montclair State, which
ear succumbed to the Pat-
on State squad twice. Except
or another home and away
series with Morris Junior Col-
lege, the games will be single.
The coach has hopes of includ-
ing Manhattan College in the
schedule, but so far that game
is undecided.
Of the ten contests already
agreed upon, six will be played

Be-
schedule.
April 18 Albu-
" 21 Morris
" 25 Trenton
" 28 Wagner
" 30 E. Stroudsburg Home
May 6 Morris J. C. Home
" 9 John Marshall Away
" 16 Montclair Away
" 20 Pace Institute Home

class-
of Rose
of great in-
classes.
ent which
ce the be-
is round-
ils. This



Extra-Curricular Organizations

ART CLUB

Grace Del Vecchio, *President*
Marguerite Tiffany, *Faculty Adviser*

THE STATE BEACON

Ralph E. Smith, *Editor-in-Chief*
Juliette Trainor, *Faculty Adviser*

DEBATING CLUB

Wallace Reid, *President*
William H. Hartley, *Faculty Adviser*

GEOGRAPHY CLUB

Charles Spinosa, *President*
Edith R. Shannon, *Faculty Adviser*

INTERNATIONAL RELATIONS CLUB

Katharine Bannehr, *President*
Benjamin Matelson, *Faculty Adviser*

MASQUE AND MASQUERS

Frank Almroth, *President*
Herbert R. Roheler, *Faculty Adviser*

PSYCHOLOGY CLUB

Betty Driscoll, *President*
Louise E. Alteneder, *Faculty Adviser*

P AND Q CLUB

Barbara Stouder, *President*
Edith L. Jackson, *Faculty Adviser*

SCIENCE CLUB

Thomas Viglione, *President*
Tunis Baker, *Faculty Adviser*

MUSIC ORGANIZATIONS

Earl Weidner, *Director*

BOOSTERS

Frank Almroth
Dr. Louise Alteneder
Rose Armenante
Edward Atkins
Jean Barker
Catherine Barna
Ruth Bastian
Maudeva Beckinghem
Marvin Bliss
Lillian Bogert
Malcolm Breitkaup
Robert Brubaker
Vincent J. Buinno
Mrs. Alice Buxton
J. M. Casey
Victor Christie
Carmen Cianci
Constance C. Clifford
Anne Cooper
Laura Crouch
Tom Cunningham
Jerry D'Agostino
Joe Davis
Jeanette De Boer
Mercedes De Lucia
Peter Di Leo
Blanche Du Bois
Fred Engelken
Louise Farcher
Katherine Focarino
Evelyn Foote
Joseph Ford
Charles Fulbeck
Frank J. Gagliardi
Ronald D. Glass
Shirley H. Goldstein
Frances C. Hangley
Edgar J. Hangley
Grace Hannon
Beatrice Hart
Dr. William Hartley
Margaret Heimann
Ruth Heismeyer
Jean Hill
Abba Hutchison
Juanita Jones
Walter J. Kearns
Mrs. Klemm
Edith Kohout
Stanley Krakower
Shirley Kramer
Winifred Laporte

Lucielle Lennon
Jeanne Luczkow
Jack Madrigan
Robert J. Mahood
Vincent Malatesta
James U. Marinello
Roberta Jean Matteson
Kay McAllister
Lois McCarthy
Kathleen McMullan
Albert Meredith
Miss A. Milheis
Florence Miskovsky
Ernest Mueller
Donald Nellis
Grace Nichols
Frank T. Nolinari
Justus A. Oakley
Myrtle O'Donnell
Gloria Orlean
Alice Pasinaka
Joe Pochat
Seymour Pollack
John F. Quinn
Emanuel Raff
George Reilly
Anna Repka
Alex A. Restalno
Mr. Al Ritchie
Mrs. Fay Rothstein
Mr. Harry Rothstein
Mr. Henry Schmidt
Mr. Phillip Schoenborn
Thelma Schreck
Sergeant Nicholas T. Sheldon
Josephine Siggia
Bridget Sinacori
Ethel Sinkbeil
James H. Stapleton
Mr. Vadya Stein
B. Steinberg
Rose Stewart
Barber Stouter
Genevieve Tierney
Helene Trocolar
Gloria Tucci
Lanell Turner
Pamela Tustin
Bill Veeck
Joyce Whetham
Barbara Wilder
Anna May Woodward
Helen V. Zito

ENGRAVINGS FOR THIS BOOK MADE BY



222 Paterson St.

Paterson, N.J.

YOUR STORY IN PICTURES LEAVES NOTHING UNTOLD

PERMANENTS OF DISTINCTION

VINCENT'S Beauty Salon

Permanent Waves \$3.25 and up
Including Hair Cut, Restyling,
Shampoo and Finger Wave

Shampoo and Finger Wave \$1.00

**SHerwood 2-1780 - 1781
9 CHURCH STREET
PATERSON, NEW JERSEY**

INDIVIDUAL SENIOR PICTURES IN
THIS YEARBOOK

Taken By

Abbott's Department Store Studio

634 MAIN AVENUE
PASSAIC, N. J.

THEO. ALTENEDER & SONS

MAKERS OF DRAFTING INSTRUMENTS



1217 SPRING GARDEN STREET

PHILADELPHIA, PENNSYLVANIA

Phone CA nol 6-6490

M. & G. Pants Shop

We Match Pants
Pants Made To Order

10 - 12 KENMARE STREET

One Flight Up New York City

A Friend

W. L.

Montclair 2-6937 Glen Ridge 7-1070

"House of Lucky Wedding Rings"

Michael Corbo

Dealer in

Diamonds - Watches
Jewelry and Silverware

292 Forest Ave. Glen Ridge, N. J.

Established 1919

Used Cars

SHerwood 2-4350-1-2

McCrane Motors, Inc.

666 MARKET STREET

At East 25th Street

PATERSON, NEW JERSEY

THE COLT PRESS  PATERSON, N. J.

For Reference
Do Not Take
From the Library



