

The Beacon

MONDAY, MARCH 27, 2000

William Paterson University • Volume 66 No. 25

<http://euphrates.wpunj.edu/beacon> FREE

Seniors can settle graduation requirements in one day

By Susan Daubar
Staff Writer

With graduation just beyond the horizon, many students are filled with anticipation of the future. What will they do after the big day? Is there any paper work that still needs to be taken care of in order to leave this institution?

Students need not have any fear, for an event is planned to take care of all of the needs and worries of prospective graduates. The event, entitled "Graduate Salute 2000", will take place on Wednesday, March 29th and Thursday, March 30th from 11:00 a.m. to 7:00 p.m. in Billy Pat's, located in the Student Center lobby. William Paterson University and Jostens company will co-sponsor the function that will allow students to take care of all paperwork and particulars in one shot.

A number of representatives from offices at WPU will be on hand to answer questions and process paperwork, including the Registrar's Office, Career Services, Financial Aid, Alumni and others. Future graduates will be able to take care of all their graduation needs at once-including getting measured for cap and gown, all

free of charge. All that is needed is a school I.D. or a driver's license.

Each graduate will be given five complimentary invitations to Commencement, which will be available during the salute. The invitations can be used for personal distribution to friends and family or for a keepsake. There are no admission tickets for the outdoor Spring Commencement. Entrance is open to all.

Marc Schaeffer, executive assistant to WPU President Arnold Speert, said, "The purpose of the event is to bring all the offices that a graduate student would need to interact with to one place."

Schaeffer explained that Jostens Company (who takes care of caps, gowns, class rings, etc.) proposed the idea for the event, which was attractive because it was consistent with the university's mission statement. The idea was presented to the President's Cabinet and the Commencement Committee, which includes the presidents of the junior and senior classes. The Committee decided to make the concept a reality.

Jostens will be selling graduation packages including personal-

see SALUTE page 15

Supreme Court: Students must pay activity fees

Nation's Highest Court upholds diversity in ideas, free speech for clubs

By Ryan Calazzo
News Editor

The decision is final: Students at public colleges and universities in the United States cannot refuse to pay activity fees for student organizations they disagree with.

Like students at William Paterson University, students at most colleges and universities around the nation pay fees that fund student clubs and organizations, including such groups that support gays, socialism, feminism and military actions. WPU has both a gay and feminist student organization.

Scott Southworth, a student at the University of Wisconsin-Madison, (UW) petitioned the Board of Regents to prevent his student activity fees from going to student organizations he disliked. The University refused to honor his request, maintaining that students could not direct the allocation of money pooled to fund student clubs and organizations.

Southworth and two other students sued the Board of Regents at the institution, arguing they were forced to pay student activity fees that funded 18 organizations whose purpose and ideology

offended them (see chart, page 15).

The plaintiffs claimed that under the First Amendment to the United States Constitution, their money supported speech that they did not agree with.

A Federal District Court for the Western District of Wisconsin shot down the school's policy, citing previous Supreme Court decisions in *Aboud v. Detroit Bd. of Ed.* and *Keller v. State Bar of Cal.*, commanding the University to stop using fees from students who objected to student organizations whose political or ideological purpose they deemed offensive.

The Board of Regents appealed the District's Court's ruling to the Seventh Circuit of the U.S. Court of Appeals, but the appellate court upheld the lower court's decision, affirming that the University's policy of funding student organizations which promoted political or ideological ideas were burdensome to the free speech rights of students who did not want their money used for certain groups.

As a last resort, the Board of Regents appealed to the ultimate judicial decision maker in the U.S.; they successfully petitioned the U.S. Supreme Court for a writ of *certiorari*, an agreement to hear the

case. Attorneys for both the University (Susan Ullman, Wisconsin assistant attorney general) and Southworth (Jordan Lorence) presented oral arguments in front of the U.S. Supreme Court on Nov. 9, 1999.

After more than five months of crafting a written decision, U.S. Supreme Court Justice John Kennedy delivered the court's unanimous opinion on March 22.

"The University may determine that its mission is well served if students have the means to engage in dynamic discussions of philosophical, religious, scientific, social, and political subjects in their extracurricular campus life outside the lecture hall. If the University reaches this conclusion, it is entitled to impose a mandatory fee to sustain an open dialogue to these ends.

"To insist upon asking what speech is germane would be contrary to the very goal the University seeks to pursue. To insist upon asking what speech is germane would be contrary to the very goal the University seeks to pursue. It is not for the Court to say what is or is not germane to the

see STUDENTS page 15

Capitol Steps to perform political satire at Shea

The Capitol Steps, a comedy team based in Washington, D.C., will bring a decidedly different spin to next month's Distinguished Lecturer Series as they lampoon politicians and their foibles this presidential election year during a performance at William Paterson University on April 7.

A limited number of single tickets may be available at the Shea Center Box Office for the lecture on April 3. For ticket availability, and to purchase single tickets, please call the box office at 973-720-2371 between 10 a.m. and 5 p.m.; prices are \$23 standard; \$21 for senior citizens, William Paterson faculty, staff and alumni; \$8 for William Paterson students; and \$12 for students from other schools. The lecture begins at 8:00 p.m. in Shea Center on campus.

The Steps, all of whom have worked on Capitol Hill at one time or another, are non-partisan. The group has built a reputation for irreverent humor based on the proposition that if entertainers



photo courtesy Capitol Steps

Capitol Steps will present a political satire on April 7 at Shea Center as part of the the WPU's Distinguished Lecturer Series.

could become politicians, then politicians could become entertainers. They lampoon both Democrats and Republicans with their light-

hearted satire.

For more than 17 years, the group has performed more than

see POLITICAL page 15

Beacon news writers win NJPA journalism awards

Two staff writers at *The Beacon* newspaper at William Paterson University will be honored this April for two articles published within the last year.

Ryan Calazzo, news editor, and Sheri Freeman, former news editor, received third place awards for investigative journalism and feature writing, respectively, from the New Jersey Press Association.

Freeman's article, "Doctor Prescribes Plagiarism to WPU Students" was printed in the spring of 1999, while Calazzo's article, "Department Says 'No' to Health Center Notes" was printed in the fall of 1999.

Paul Bonney, Editor in chief of *The Beacon*, is pleased with the results. "We have a group of talented writers who devote a lot of time to making the paper happen. We have a great college newspaper. I am happy that the efforts of at least

two of our committed staff members have been recognized," he said.

Matt Halpern, Business Manager for *The Beacon*, was enthusiastic about the announcement. "This distinction is special because it honors members of the William Paterson student community and recognizes that *The Beacon* is an asset to the university."

The Beacon submitted writing samples in the association's annual Better College Writing Contest. A total of 116 entries were submitted this year, from 11 colleges and universities.

Calazzo and Freeman will be honored at the annual New Jersey Press Association spring conference on April 13 in South Brunswick.

The Beacon is pleased to receive these awards, as well as to have a dedicated staff.

News

Stray Cats
Page 4

Insider

Final
Destination
Page 9

Sports

Men's
Baseball
Page 24

AFTER A SOLD OUT U.S. TOUR INCLUDING 7 SHOWS AT TOWN HALL
ANNOUNCING AN ENCORE PERFORMANCE!

the KIDS in the HALL

AN EVENING WITH

Same Guys,
New Dresses
Tour 2000



kevin mcdonald | scott thompson | david foley | mark mckinney | bruce mcculloch

www.comedycentral.com

APRIL 12

NEWARK SYMPHONY HALL
1020 BROAD STREET

TIX AVAIL AT NEWARK SYMPHONY HALL BOX OFFICE & ALL ~~WIDE AREA~~ OUTLETS.
CHG BY PHONE: (212) 907-7171 (201) 587-8900. TIX SUBJECT TO CONVENIENCE CHARGES.
EVENT, DATE & TIME SUBJECT TO CHANGE.

www.livenight.com www.ticketmaster.com

PRODUCED BY DESENERSLATER

CAMPUS CALENDAR

Monday, March 27

Catholic Campus Ministry & TKE: Come get in the fun & make a few "grown up" friends too at Preakness Nursing Home. Meet at CCMC @ 6:30 p.m. For more information, call Denise @ 720-3524.

Career Development Center and Women's Studies: Careers in Women's Studies. Panel one - 11 a.m. - 12:30 p.m., Library Auditorium; panel two - 7 - 9 p.m., SC 203-4-5. Refreshments will be served. For more information, call 720-3547.

Tuesday, March 28

Equestrian Team: General Meeting; all are welcome. 12:30 p.m., SGA office. For more information, contact Cynthia @ x4046.

Women's Center: 5th Annual Celebration of WPUNJ Women: Tributes, Entertainment, and Reception. 12:30-2 p.m., SC 203. For more information, contact Meryle Kaplan @ 720-2946.

Coalition of Lesbians, Gays and Friends (COLGAF): Meeting and rap session. 12:30 p.m. Student Center 304. Call 720-2022 or email colgaf@hotmail.com for more information. New "members" wanted.

Wednesday, March 29

Catholic Campus Ministry & ASA: Come spend a night with the physically and mentally challenged @ NJDC. Meet at CCMC @ 6:30 p.m. For more information, contact Denise @ 720-3524.

Thursday, March 30

Department of Nursing and Graduate Nursing Students Organization: Providing Healthcare Worldwide to vulnerable women and children with former Chief Nurse of the U.S. Public Health Service, Admiral Julia R. Plotnick. Askew Library Auditorium, 6:30 - 8 p.m. Please RSVP @ 720-3511.

Coalition of Lesbians, Gays and Friends (COLGAF): Meeting and rap session. 7:30 p.m. Student Center 203-4-5. Call 720-2022 or email colgaf@hotmail.com for more information. New "members" welcome.

Friday, March 30

Feminist Collective: "Groove." 8 p.m. - 1 a.m., SC Ballroom. For more information, contact Beth @ 720-2022.

Sunday, April 2

Catholic Campus Ministry: Join us for a very special evening with music from the WPUNJ String Ensemble @ 7 p.m., a Healing Mass follows at 7:30 p.m. and finale @ 8:30 p.m. Enjoy an ice cream social. For more information, contact Denise @ 720-3524.

FIRES IN THE MIRROR:

Crown Heights, Brooklyn
and Other Identities

By Anna Deavere Smith

Directed By
Edward Matthews

Featuring:
Sherry R. Capers-Dock
Tara Ricart
Ian Schoen
Mary Tirilli
Monique Vazquez
Ivy Genava Waller

March 30-April 4, 2000

Thurs., Fri., Sat., & Mon. @ 8:00pm
Sun. @ 3:00pm / Mon. & Tues. @ 10:00am

**Shea Center
for Performing Arts**
For Tickets & Information Call:
973.720.2371

"Quite simply the most compelling
and sophisticated view of
urban racial and class conflict
that one could hope to
encounter."
- The New York Times

the Beacon

A NEWSPAPER THAT'S CLEARLY FOR YOU

Paul Bonney
Editor in Chief

News Editor Ryan L. Caiazza

Sports Editor Laurie Quinlan

Insider Editor Jennifer Fletcher

Photo Editor Laurie Koba

Business Manager Matthew Halpern

Web Page Manager Mark R. Brown

Circulation Director William Perry

Staff Writers

Albert Burton, Susan Daubaur, Dale DeVino,
Frederick Doot, Jennifer Fletcher, Aaron Kinsman,
Will Lawson, Brian Lo Pinto, Alexis C. Nieto, Erik Ortiz,
Mark Fonseca Rendeiro, Renee Romanelli,
Katherine Scala, Caroline Schmidt, Michael K. Wnoroski

Staff Photographers

Dan Kreifus, Sylvania Meneses,
Tom Malkiewicz, Kymberli Van den Noort

Copy Editors

Katherine Scala and Andrew Semegram

Academic Advisers

Elizabeth Birge and Muroki Mwaura

Financial Services Provided By

The Student Government Association of WPUNJ

The Beacon is published on Monday, and serves
Haledon, North Haledon, Wayne, and the William
Paterson University community. The business
and editorial offices are located on the campus of
William Paterson University in the Student
Center, Room 310, Wayne, New Jersey 07470.
(973) 720-2248. The Beacon receives no money
from William Paterson University or its student
body and therefore relies solely on advertising
revenue to operate.



5th annual celebration of women set for Tuesday

In honor of Women's History Month, the Women's Center at William Paterson University is sponsoring its fifth annual Celebration of WPUNJ Women on Tuesday, March 28 in the Machuga Student Center rooms 203-4-5 at 12:30 p.m. This celebration and afternoon of appreciation has become a tradition at WPU. Students and faculty are welcome to attend to enjoy food, entertainment and tributes.

Any woman at WPUNJ, in any

department, whether student, faculty or staff, can be mentioned in a tribute. Tribute forms are available at the Women's Center (SC 214). The Women's Center is open till 7:00 p.m. on Mondays and Wednesdays. Persons wishing to make tributes may write any praise, gratitude or appreciation that on the one-page form. The tributes will be decorated and displayed at Tuesday's celebration. Afterward, copies will be sent to each woman being paid tribute.

The Women's History Month theme this year is "Imagine the Future..."

"Imagine what a kind and empowering world it could be if we each told one another the nice things that we noticed and admired in them. Imagine what it feels like to be appreciated for being the person you are, no comparisons, no competition." -WPU Women's Center

Speert suspends, demotes 3rd campus police officer from December incident

By Ryan Caiazzo
News Editor

President Arnold Speert of William Paterson University has suspended a third police officer for 30 days and demoted his status from sergeant to patrolman following a misconduct investigation and hearing process.

Stuart Goldstein, head of University Relations at WPU, told *The Beacon* that the officer was suspended and demoted for "neglect of duty and failure to perform duties." The name of the officer has not been released to the public.

The suspension and demotion stem from a Dec. 17, 1999 incident after which one police officer was fired and a second suspended for 90 days without pay amid allegations that officers acted inappropriately during an arrest.

The incident involved a non-student, Mustafa Thomas, and allegedly transpired outside the Heritage Hall apartment complex in the North Haledon section of campus. *The Beacon* reported on Feb. 7 that a statement released by University Relations read "a suspect was charged with disorderly persons and resisting arrest."

The termination and suspension

of officers resulted from "conduct unbecoming a public employee, neglect of duty and failure to perform duties," the statement further read.

Details of the incident have not been made public, and basic facts have been kept clandestine by university officials because the incident has been under investigation.

According to Lee Moore of the State Attorney General's Office, President Speert has authority to hold hearings into the investigation of the police officers' conduct, as well as an ultimate determination of any wrongdoing and subsequent disciplinary action.

The State Attorney General's office is responsible for the defense of WPU because it is a state-funded public institution.

All three police officers have the right to appeal Speert's decision through the Merit System Board, a division of the New Jersey Department of Personnel. It is unknown if any appeals have been made.

The WPU Police Department has been under criticism by many members of the campus community regarding allegations of excessive force and inappropriate conduct.

Dr. Pluss resigns from WPU, 'vanishes' from campus community

By Jacklyn Reiff
News Contributor

"It was a total surprise" were the words of Dr. Bowles, a professor of History, on the recent resignation of one of her colleagues, Dr. Jaques Pluss. A tenured Associate Professor of History, Dr. Pluss had been with William Paterson University since 1984. His quick and sudden departure during the first week of March has left students and faculty stunned.

Dr. Bowles, who shared an office with Pluss, said that she came in one morning to find his side of the office completely empty. Dr. Sarah Nalle, a professor of History, is covering his Intellectual History of Ancient and Medieval Civilizations class. She said that Dr. Pluss's sudden departure from WPU has left many of his students

disappointed, adding that students were "shocked" by his sudden resignation, and that he had never mentioned anything to them about leaving.

According to Dr. Isabel Tirado, the Dean of the College of Humanities and Social Sciences, Dr. Pluss' letter of resignation simply said he had "other things to do with his life."

Dr. Pluss left no indication of where he might be going, and his home phone number has been disconnected. As for the plan to replace Dr. Pluss, Dr. Tirado said that the University will conduct a "full search" over the next year for someone to fill his position. The classes he had this semester are being covered by other professors from the history department and will finish out the semester accordingly.

RETIREMENT INSURANCE MUTUAL FUNDS TRUST SERVICES TUITION FINANCING

It's a simple calculation:
TIAA-CREF's low expenses mean more money working for you.

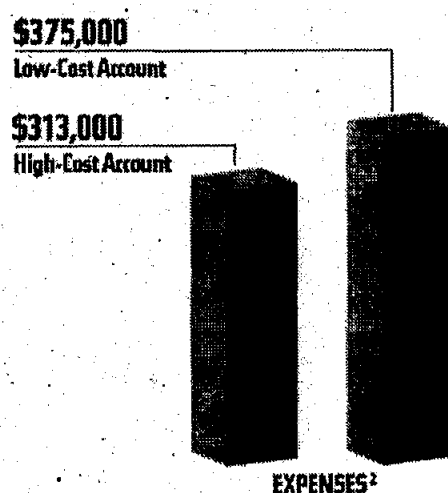
The equation is easy. Lower expenses in managing a fund can equal better performance.

How much? Just take a look at the chart. Then call us. We'll send you a free, easy-to-use expense calculator so you can see for yourself that no matter what your investment, you'll benefit from low expenses. And CREF expenses range from just 0.29% to 0.37%.¹

For more than 80 years, we've been committed to low expenses, superior customer service and strong performance.

Add it all up and you'll find that selecting your retirement provider is an easy decision: TIAA-CREF.

THE IMPACT OF EXPENSES ON PERFORMANCE



Total accumulations after 20 years based on initial investment of \$50,000 and hypothetical annual returns of 11%.²



Ensuring the future for those who shape it.

1 800 842-2776

www.tiaa-cref.org

1. CREF is a variable annuity. Estimated annual expenses are adjusted quarterly. 2. 1.40% is a very reasonable fee level for a typical fund; 0.40% is near, but not actually at the bottom of the mutual fund expense ratio spectrum. 3. The chart above is presented for illustrative purposes only and does not reflect actual performance, or predict future results, of any TIAA-CREF account, or reflect taxes. TIAA-CREF Individual and Institutional Services, Inc. distributes CREF certificates and interests in the TIAA Real Estate Account, Teachers Personal Investors Services, Inc. distributes the variable component of the personal annuities, mutual funds and tuition savings agreements. TIAA and TIAA-CREF Life Insurance Co. issue insurance and annuities. TIAA-CREF Trust Company, FSB provides trust services. Investment products are not FDIC insured, may lose value and are not bank guaranteed. For more complete information on our securities products, including charges and expenses, call 1 800 842-2776, ext. 3509, for the prospectuses. Read them carefully before you invest or send money. © 2000 TIAA-CREF 1/00.

It is not too late to write for The Beacon. Earn great experience and EXCELLENT RESUME MATERIAL.

Call Ryan at 720-2576, and begin working with some cool people who make the student newspaper of William Paterson University a reality.

CAT ATTACK: Campus felines familiar sight, danger at William Paterson

By Bari Feinstein
Feature Contributor

The stray-cat strut is a familiar sight around the William Paterson University campus. In fact, the cats' community has grown to be as diverse as the melting pot of students and faculty who co-exist with them on campus.

All types of cats roam the grounds in search of food and water. The felines come in various shapes, sizes and colors. It is unknown exactly how many "reside" on campus, but scores of cats have made the campus their home for decades.

"It's a hidden problem that I really don't know the answer to," said Ann Yusaitis, a WPU counselor, who guesses the number of current cats to be 30 or more. "I've been on campus for 33 years and there have always been cats - and rabbits and deer - there's a lot of animal life on campus. But the cats are not tame; they're wild. The cats just keep breeding. So now it's their great, great, great grandchildren that live here."

Most people traveling around the campus have become accustomed to the strays. However, a debate has arisen at the school about whether or not something should be done about the cats on campus.

Whose responsibility is it anyway, on a campus that extends into three towns (Wayne, North Haledon, and Haledon)? Although WPU is a state school, no state ani-

mal control exists - only local units.

Eric Sampson, 22, an account manager for a telecommunications firm and WPU junior, is familiar with the cats that linger behind the student center.

"I don't know if it is the town of Wayne or the county, but I think our tax dollars should pay for something since this is a state and public institution," he said. "I don't think it is the university's responsibility just because the cats are located here. Local animal control services, I believe, should become involved and notified of this issue and from there maybe they could notify us of any potential problem that it may cause health wise and risk wise to the people around here."

Chief John DeCando of Paterson's Animal Control Department has no idea who is responsible for dealing with the feline issue.

"If it's the campus, the campus police will probably take action on that but the responsible solution would be for more education up on the campus. I mean explain to people exactly what you should do and what you shouldn't do. Maybe the people feeding these cats are not aware of what could happen to them. I definitely think more education should be addressed to the campus police and/or personnel," he said.

According to Sgt. Robert MacFarlane, a university police detective, the cats may be a danger

to people because it is unknown what diseases they may be carrying.

"The cats are defecating around the area," said MacFarlane. "It's possible there are diseases in it (the feces) and if someone steps in it they could be exposed to these diseases."

Fred Nisenholz, a veterinarian and River Edge resident, said rabies (a disease of the nervous system usually transmitted through the bite of a violent animal) is a danger. Abnormal behavior, eventual paralysis, and death can result from rabies. According to the vet, raccoons and bats are the leading carriers of rabies and can pass the disease onto other animals.

Cats are also known to transmit Cat Scratch Fever and feline AIDS to humans, he said. In Nisenholz's opinion, the best thing to do for both the students and the cats' welfare is to remove the animals from campus and bring them to a no-kill shelter. The danger, however, is that it is impossible to tell whether an animal is rabid and whether anyone scratched by one is at risk, said Nisenholz.

MacFarlane remembers an attempt a few years ago to stem the cat problem.

"I'm not sure if it was animal control or whether we hired someone. They were running around trapping them and they took a whole mess of them away. And I would say within a month or two the cats were back again. So who's

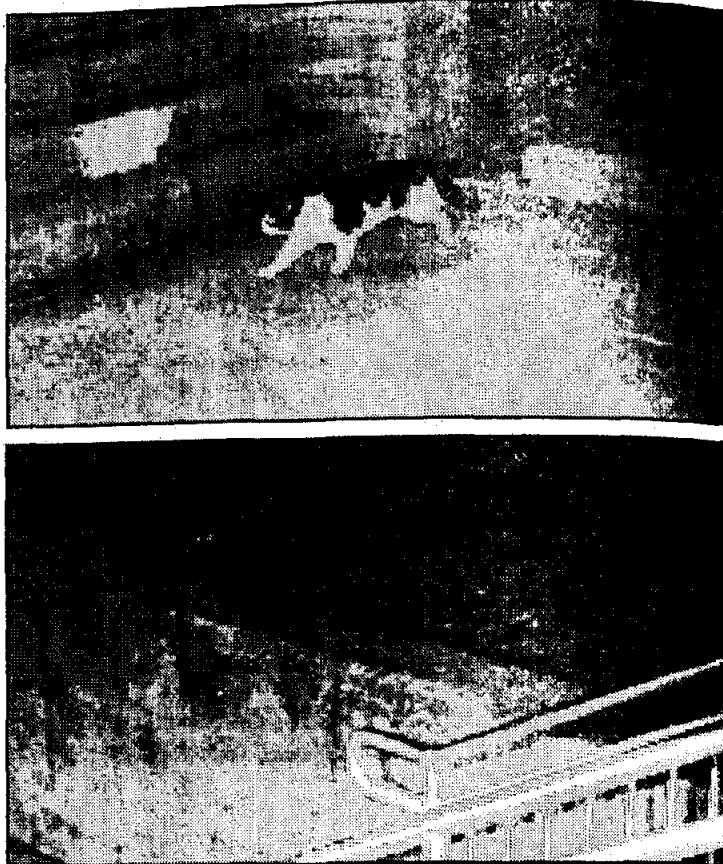


photo by Laurie Koba

The back of the Machuga Student Center is a familiar hang out spot for dozens of stray cats at William Paterson University.

responsible? It's hard to say."

Joe Caffarelli, WPU director of residence life, also recalls animal control coming to trap some of the cats.

"We had called the animal control to come and round up some of the cats because we were con-

cerned with the winter coming - that the cats were going to starve and freeze. So I do remember animal control trying to round up the cats and bring them to a shelter."

see **CAMPUS** page 14

Office of Minority Education

and

Career Development Center

William Paterson University

Presents

Dress for Success

Getting ready for an interview?

Learn from a professional:

- ◆ Nonverbal communication
- ◆ Business etiquette and manners
- ◆ Appropriate dress

March 30, 2000

★ **FREE FOOD** ★

Martini Conference Room

★ **FREE PRIZES** ★

Hobart Hall

12:30 - 2:00



Got Beer? PETA urges college students to dump milk for brew

Research Shows Beer Is Better Than Milk

Norfolk, Va. — Getting college students to put milk products out to pasture by telling them that even beer is better for them may not take much convincing, but People for the Ethical Treatment of Animals wants undergrads to know that the foam moustache should 'be from a brew, not a "moo," and has created a new Web site, www.MilkSucks.com, to show them why.

In addition to being loaded with fat and cholesterol, dairy products are frequently contaminated with pesticides and drugs, and they are linked to diabetes, heart disease, and certain cancers. What's more, it is not "natural" for people to drink cows' milk; it is meant for calves. Humans are the only animals who drink the milk of another species and who drink milk beyond infancy. A nutritional comparison between beer and milk reveals that:

♦ Beer has zero fat; milk is loaded with it.

♦ Beer has zero cholesterol; milk contains 20 mg in every 8-oz glass.

♦ Beer doesn't contain hormones or antibiotics, while milk contains pesticides and antibiotics fed to cows, including a bovine growth hormone RGBH, the notorious growth hormone that can give guys breasts.

♦ Beer has only 12 mg of sodium per 122 mg. Milk is sky high in sodium.

♦ The high-animal protein content of milk actually leaches calcium from the bones.

"Dairy cows" today are treated like milk machines — continually impregnated to keep them lactating so that farmers may take their milk. To save time and human labor, factory farmers use milking machines that often cause cuts, injuries, and electric shocks to cows' udders. The calves taken from their mothers soon after birth are either added to the dairy herds or confined to small crates for the production of veal.

"Knowing how cows suffer in the dairy industry is enough to make anyone lactose intolerant," says PETA President Ingrid Newkirk. "And with so many delicious, healthful alternatives available, like fresh juices, soy milk and yes, even beer—it's easy to dump the dairy."

PETA is urging college students to wipe off those milk mustaches and replace them with ... foam? The largest animal rights group in the world is releasing the results of research showing that beer is actually better for you than milk. PETA is giving away bottle openers that say, "Drinking responsibly means not drinking milk—save a cow's life," to college students who visit www.MilkSucks.com.

The dairy industry spends more than \$300 million every year to convince people to drink gallons of

the white stuff, but PETA's sentiments are with savvy health officials who warn that dairy products have four major drawbacks. Milk and cheese: 1) are loaded with fat and cholesterol and devoid of complex carbohydrates; 2) are frequently contaminated with pesticides and drugs; 3) are linked to diabetes, heart disease, and certain cancers; and 4) may even cause osteoporosis, the very disease that the dairy industry loves to use as a selling point in its ads, because the excess protein in dairy products leaches calcium from the bones. (The Harvard Nurses' Study shows almost twice as many bone breaks among women who drink three glasses of milk a day as compared to women who drink little to no milk.)

In the U.S., Norway, and Sweden where people consume the most dairy products—women have the highest rates of osteoporosis in the world. Regions of the world where dairy products are not part of the culture, such as China and Japan, are virtually osteoporosis-free. A study published by the Journal of Clinical Nutrition found that by the time she is 65, the average female American dairy-drinker will have lost 35 percent of her original bone density. The average female American vegetarian will have lost only 18 percent.

Unless you drink the stuff on your way up Mount Everest, beer won't give you a stroke. However, dairy products contribute to almost every disease except carpal tunnel syndrome, including stroke; iron-deficiency; allergies; cancers of the prostate, breast, colon, and ovaries; asthma; heart disease; and even the common cold (milk helps promote the production of mucus).

PETA's main "beef" is, of course, about the treatment of the mother cows and their calves on factory farms. Today's dairy cow is treated

like nothing more than a milk machine—chained by her neck in a concrete stall for months, her udders genetically modified to produce so much extra milk that they sometimes drag on the feces and urine covered cement. She is kept pregnant by artificial insemination to keep milk production high; her male calves are traumatically taken away from her at one to two days old and chained inside cramped dark crates to be killed for veal. The milk that is meant for them ends up on our supermarket shelves. There are no retirement homes for dairy cows. When their usefulness to dairy farmers is over, they get shoved into a truck and sent off to slaughter.

PETA's College Action Campaign coordinator Morgan Leyh counsels, "Colleges have been busy banning kegs from campus. But we say, 'Ditch the dairy, not the beer!'"

News Editor's Note: The preceding article is a press release from PETA in Virginia. The Beacon makes no claim to authenticate or validate any facts purported in this article, and further does not encourage alcohol consumption. RC

REACT
to this article!
E-mail comments

to:
beacon@student.wpunj.edu

Let us know
what YOU think

ADVISE- MENT TIP OF THE WEEK

Not doing well in a class?

There is a way out - The Early Alert Program

The Early Alert Program is designed to assist students who are experiencing problems that interfere with their academic success.

Students can be placed on Early Alert by their instructors or administrators. This should occur during the first six weeks of the semester, but can occur later if necessary.

The following procedures must be followed:

- 1.) You must meet with a Resident Director if you are a resident student, or an Early Alert Advisor if you are a commuter. You will be notified and an appointment will be made for you.
- 2.) You will be referred to a support service for help. You will be given an attendance form which must be signed by the support service staff member, every time you use the service.
- 3.) The attendance form, when completed, should then be given to the faculty member or administrator who placed you on Early Alert as proof that you have received help.

GREEK SENATE

Semi-Annual Blood Drive

TUESDAY



March 28-30

@ 11am

**STUDENT CENTER
BALLROOM**

**We're NEXTLINK and we're creating
a new kind of TELECOMMUNICATIONS
company from the ground up.**

**YOU CAN BE
PART OF IT.**

NEXTLINK, powered by telecommunications guru, Craig McCaw, is building a complete information technology platform supporting all types of business communications — VOICE, DATA, VIDEO. You name it. NEXTLINK offers the kind of commitment to your future that you'd expect from a true leader in the digital economy. So take your career to the next level at NEXTLINK.

Our **ASSOCIATE ACCOUNT EXECUTIVE** program is an entry level training program for aspiring sales professionals. NEXTLINK will commit to teaching you telecommunications if you can commit to working hard. We're introducing a 6-month, salaried program that will put you at the forefront of our industry. Upon satisfactory completion, you will be promoted to an Account Executive with a chance to make unlimited earnings.

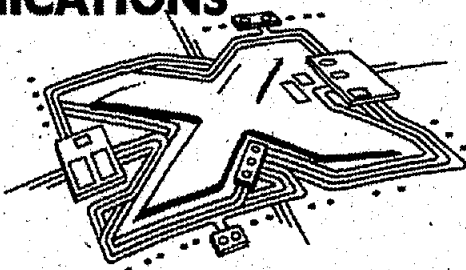
NEXTLINK offers highly competitive salaries and exceptional benefits, including an opportunity to own stock in the company. Please fax resume to Barry Fields at 201-226-1685 or email bfields@nextlink.com.

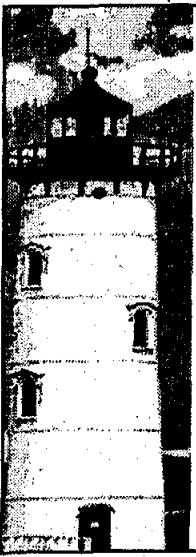
www.nextlink.com

N E T L I N K

Your phone service. Redefined

EOE, M/F/D/V A drug-free workplace





The Beacon

EDITORIAL BOARD

Ryan Calazzo

News Editor

Jennifer Fletcher

Insider Editor

Laurie Quinlan

Sports Editor

Laurie Koba

Photo Editor

Paul Bonney

Editor in Chief

The opinions on this page do not necessarily represent the opinions of the entire Beacon Staff.

Mailbag

Student upset over recent WPSC-FM firings

To the Editor:

This letter is to inform the WPUNJ community that the "Death Roe and Eddy Cash Experience," a weekly program on our radio station, WPSC, has been cancelled. I want to take this opportunity to voice my dissent against this action and the circumstances leading up to it. It seems obvious to me that this action was taken prematurely and also as a part of the private agenda of one particular member of WPSC's administration.

This show aired on Thursdays from 9 to 12 p.m. (a time slot intended for non-format programming, such as this) and was not subject to content requirements (except for FCC regulations, of course) such as other time slots. Further more, this action was taken without the due process required by the "WPSC Rules," which hang on the station walls and are known by all WPSC staff.

These rules state that a documented verbal warning be given upon first offense, a two week suspension be given for the second, and revocation of privileges as a disc jockey for the third. One of the disc jockeys of this program has had documented write-ups in

the past and the other has a clean record. This cancellation happened IN CONJUNCTION WITH NO DOCUMENTED OFFENSE, an action which itself circumvents the organization's own express rules. This act was taken to serve the agenda of a particular WPSC administrator, not the WPUNJ community as actions of this type should.

The "Death Roe and Eddy Cash Experience" is one of the more popular programs of WPSC, as feedback on the guestbook of their webpage (<http://www.lapagaille.com/wpscfm/djpages/edcash.html>) from their vocal and dedicated fans.

Their humor may have been low-brow at times, but that alone does not stand as a reason for this. As a fan of theirs and also as a WPSC disc jockey, I ask that you show your support by signing the guestbook on their webpage. Support college radio by listening and giving constructive criticism - not my making rash firings.

As a fellow disc jockey and student, I hope these kids stay on the air.

Rene Rydberg
Senior

E.R.A.S.E. president urges student involvement

To the Editor:

I would like to comment on the lack of participation from some of the ethnic organizations on campus with the organization E.R.A.S.E. (End Racism and Sexism Everywhere).

I personally felt the success of the organization was a bittersweet one, due to the fact that several organizations that speak of uniting the WPU community were not in attendance. Despite the absence of certain club leaders (who know who they are), we have 42 new E.R.A.S.E. members at William Paterson University, and the number continues to grow.

I hope that fellow organizations with similar purposes can unite with my organization for future endeavors and not let egos of their leadership roles being in jeopardy, stand in the way of justice for all human kind. Thank you again to those who participated and are exemplifying our motto, "Bringing People Together."

Kisha Manning
E.R.A.S.E. President

Seniors should help support 2000 class gift

The senior class gift program, based around the phrase "Help Build William Paterson University's Path to the Future," is about to be kicked off. For all members of the Class of 2000 who participate in the program, a brick with their names will become part of a new path to be constructed on campus between the Shea Center for the Performing Arts and the Sarah Byrd Askew Library.

The program asks for a minor pledge of \$20 for five years, which will be applied to student scholarships. Half of the monies collected will provide for deserving students next year, and half will benefit students through a scholarship fund that will accrue interest through the years. Specific scholarship information may be obtained in the Alumni Office, in Hobart Manor on the First Floor. This year's scholarship applications are due on Friday, and can now be accessed right off William Paterson's homepage.

As the first class of the new millennium and the new century, we should help give back to the school that gave us an affordable, quality education. By encouraging other seniors to participate, we are telling the

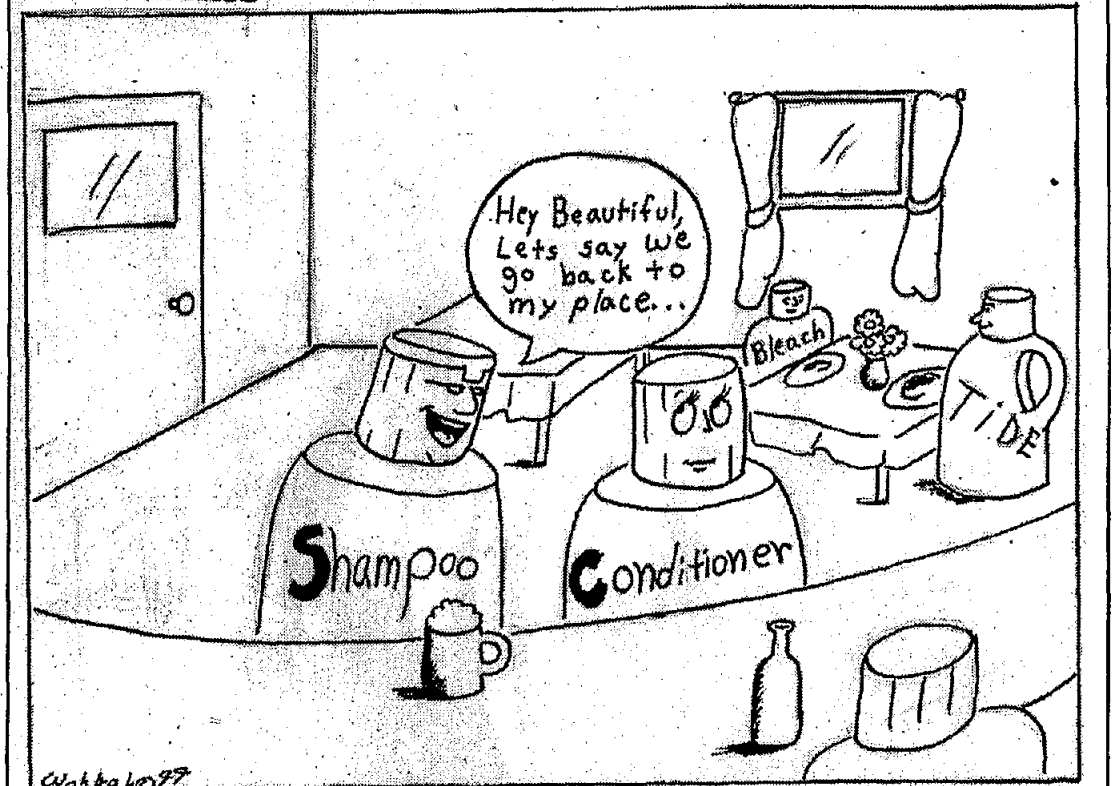
school "thank you." In addition, this minor donation informs alumni that it is definitely worth it to donate themselves. We can help to make the importance of our William Paterson education recognized by continuing to support its students.

To assure your name on a brick, graduating seniors should go to the Senior Class Gift table in Billy Pe's during "Senior Salute," on Wednesday and Thursday (March 29 -30), from 11:00 a.m. to 7:00 p.m. and sign the pledge.

After you pick up your free commemorative Senior Class Gift T-shirt, be sure to pick up a pledge card and consider the minimal donation requested. You can return it immediately, during common hours in the Student Center in April, or at various times during Springfest from April 15-20. Make sure it is returned before May 8 to ensure your name's placement on a brick. If you need more information, please call (93) 720-2978.

Supporting this important program and creating a permanent bond with the University is an opportunity that should not be missed.

Wohnuts



How we got shampoo and conditioner in one

Breaking into secrets about hacking

DANGER
INNER-COURSE
IN PROGRESS

By Sheri A. Freeman

Every day and night more people are shopping and investing their money on the internet. Sites like E-Trade, and Amazon.com are rolling in the dough. Advertisers are paying big bucks for space of these sights, due to the number of surfers that visit them daily. However, there is a problem.

Hacking terrorists have halted E-Business on these sights, as well as Buy.com, eBay and more. Hackers are dialing into the sights over and over and over again, literally causing gridlock traffic so users get frustrated and sign off. In the meantime, E-tailers could potentially be at the complete mercy of some computer weenie who has too much time on their hands.

According to Business Week magazine, 300,000 credit card numbers were snatched from CD Universe in December 1999 and the Melissa Virus caused and estimated \$80 million in damages. Security experts say that there are 1,900 sites that offer free tools that will let people

snoop, crash and terrorize Web sites.

In 1996, America Online Incorporated cut their service to Russia when it seriously fell victim to Russian Hackers.

Folks, this is why you must beware of technology. Sure, it's a good thing sometimes. People are researching on the internet, medical records are easily transferred from hospitals to doctors' offices, organizations are fundraising over the net, you can make travel reservations, order dinner, fill out your FAFSA form. Hell, you can even purchase your own coffin with the click of a mouse.

There are so many things you can do online. However, for all the things you, the normal surfer, can do, there are two things a hacker can do to either have your business on its knees, ruin identity and credit, or perhaps interrupt your schedule.

Most recently, it's been Denial of Service. Hackers drill a site for too much information at the same time, causing others to be denied access to the site. This technique of hacking can even crash a site.

Spoofing is when your little brother, the quiet kid sitting next to you in Biology, or some schitzofrenic inserts a fake e-mail address onto a Web site to obtain your passwords, credit card numbers, addresses, sexual fantasies, social security information, etc. It's like telling someone where the spare key to your house is hidden and then being surprised when they break-in and smell your underwear or steal your shoes. Creepy? Sure!

Sniffers seek out passwords, though. I have

personally been hit with this one twice, having to change my e-mail address and password both times. Did it stop? Maybe. Or maybe someone has my password right now and is only waiting for the right moment to attack.

Trojan Horses search out the vulnerability in your software and then takes advantage of it.

Dumpster Diving is my favorite. When a hacker searches through a company's trash or recycling for information that will help them break into their computer system.

Yeah, sure I'll be spending money on the Internet this Christmas - I don't think so.

But there are people to help shoppers if they're tricked, right? Well, supposedly, but not really. The Federal Trade Commission is supposed to be investigating claims by Web surfers about online fraud. 61 suits were filed last year, but nothing really came of them. It's like swimming without a lifeguard at his post people. The wallpaper on each computer should say, "Surf at Your Own Risk, dude"

Man there really isn't too much room for my opinion, but I guess the facts are sufficient. You're putting your identity, money, patience and history on the line each time you log on, so be careful.

The same medium they hack on, they consider their soapbox as well. If you're interested, there are some site for hackers, such as www.2600.com, a hackers newsletter. (Wow, I wonder if they're unionized too?) Others are The Hacker Anti-Defamation League, <http://members.xoom.com> (This site bluntly asks for your address - oh yeah!), The Hacker News Network, www.hackernews.com and the Hackers Hideout Library at www.hackersclub.com.

Finding little liberty at Lady Liberty

Many college students travel to warm islands with crystal clear water, golden beaches and 50 cent tropical drinks for their spring break getaways. Instead of doing the norm, I elected to go someplace where the water is olive-brown, the beach is a pile of rocks and small Coca-Cola's cost \$2.50 each. My destination: The Statue of Liberty.

The trip was spontaneous and unmotivated. I hadn't been there since I was in the 4th grade.

After making only one wrong turn on the turnpike (the mistake cost me an additional \$1.85, because there are no U-turns before the next tollbooth), I finally made my way toward Liberty State Park.

I pulled up to the gate to park my car. The sign said, "\$5.00 parking longer than two hours, refund if less than two hours." What I couldn't understand is why drivers have to stop before the cashier to take a ticket from the machine, then proceed to the cashier to pay. (Which, of course, I drove up too far from the machine and had to get out of the car to get the stupid ticket). After forking over a five spot to Yovavia, the cashier, I asked her why she couldn't give each driver the ticket. She said, "That ain't the way they want to do it." Say no more, I thought, it's the government's way of providing efficient and effective tourism mechanisms.

I parked and walked over to the building where ferry tickets can be purchased. After waiting in line only 15 minutes, I had to shell out another \$7 for an adult ticket on the Circle Line Ferry, which enjoys a monopoly for transporting all visitors to and from Liberty State Park, Ellis Island and the Statue of Liberty.

I asked myself, "If a 13-year-old is considered an adult to buy his/her way onto the boat, is he/she still an adult if he/she commits a crime while on the boat? And if so, who has jurisdiction to handle the matter: New York or New Jersey?" Wow. Dr. Principe would be proud that I was asking critical questions on my day "off"

from classes.

When I got up to the cashier, I asked why there wasn't a student rate. After all, Ellis Island and the Statue of Liberty are educationally exquisite. There is no better place to learn about immigration than where it all happened. But the cashier said, "an adult is an adult."

Hmm. Movie theaters will give me a discount to watch blood, guts and gore, (as educational as watching paint dry) but a federally and state funded museum where I can actually edify myself would seemingly rather I go to a senseless movie, learn nothing about history and pay half the cost for it. What a paradox. Ok, there is no ferry at the movie theaters, but still, it's the principle of the example. Does the government value educational experiences for college students?

I looked over toward Ellis Island in the distance as I waited for the ferry on the banks of Liberty State Park, a clear image of an almost forboding island. I pondered what immigrants might have thought when they first saw their first destination in America. Even after more than 100 years, it's still an impressive sight to see.

I boarded the boat with what seemed like 10,000 fourth graders from every school in the state. The conditions were cramped, much like the Pioneer shuttle at five minutes to 11 a.m. on a Tuesday morning. I found a place to stand on the port side of the vessel, overlooking the dark, murky water. As the boat ferried its way toward the island, I thought of my ancestors making the trip to Ellis; what an awesome experience it must have been.

I was headed for Lady Liberty today, to climb her 22 stories. That was my goal. And I thought after that, I'll come back to Ellis Island. The next stop was the Statue.

Once on the island, I joined the other 20,000 people who all had the same idea as me for that sunny afternoon. "Ugh," I thought, as I reluctantly joined the line that was moving like molasses — in winter. I waited over an hour — outside

the statue — before finally arriving to the entrance to the base of the hollow, green monument.

When I entered the doors, I discovered what was delaying everyone: security checks. Each person had to walk through a metal detector and place all bags and coats on a conveyor belt for scanning. The security was better than Newark International Airport. One at a time, nearly every person who walked through had something in his/her pocket to set the alarm off, delaying everyone waiting in line.

A family with a little boy in a wheel chair approached the security gate. The guard called on his 2-way radio for assistance. Ten minutes later, two additional guards arrived for a meeting of the minds to determine how they were going to check this terrorist-looking boy who was sitting in an all-metal chair. One guard had a brilliant idea. "Let's pick him up and carry him through the gate," he said in broken English. The boy's mother attempted to explain that he was a paraplegic, but her enlightenment fell on deaf ears.

While the guards were having a strategic formulation conference, everyone in line was left standing en masse — unhappily. People were becoming impatient and angry because the FBI wannabe "officers" couldn't figure out a way to check the boy without taking him out of the wheelchair. "Do they usually take people out of their wheelchairs and carry them through the gate?" I thought.

Ten more minutes and two phone calls later, the guards brainstormed and had a revelation: "Perhaps we should search the boy ON the chair, and run his coat and bag through the scanner. What a great solution." The crowd witnessing the slow-thinking security regime cheered, as other onlookers made snide comments about the stupidity of the over-dressed safety patrolmen.

This family — with all small children — certainly looked like they were up to no good. I felt com-



photo by Ryan Caiazzo/The Beacon

A look at The Statue of Liberty from the Miss Liberty ferry

pelled to add my two cents, so when the one monkey guard was molesting the young boy, I said, "Watch out for that AK47 under his shirt." The guard returned a displeasing grin. As the family was permitted to advance through to the elevator, the rest of the now four-mile line was able to resume the security check and climb the statue.

After I cleared the metal detector (I admit that a paper clip in my pocket and a dog tag on my neck sent me back through the detector twice), I thought of the irony of the search at the Statue of LIBERTY. We are NOT free. We do NOT have true liberty. Liberty is a theoretical concept that has been yielded to a few terrorists and a frightened — even paranoid — public.

Everywhere we go we are subject to search (even at WPU parties in the Student Center). We can choose not to go to places where we will be searched, but then we are depriving ourselves of the right to go to public places. We have the liberty to enjoy public landmarks, but no liberty against being subjected to reasonable — and sometimes unreasonable and overzeal-

ous — searches. So much for the 4th amendment in a mistrustful society.

I had the luck of climbing the statue directly behind a family of three obnoxious youngsters, who fought, argued and screamed all the way up to the crown. It seemed that I could not escape the annoying habits of kids anywhere.

After about another hour, I finally reached my ultimate destination — the crown. It seemed much smaller than when I visited as one of those obnoxious kids in front of me, many moons ago. After taking a brief look through the windows, I began my descent. The stairs going down led into what else but a gift shop. For a minute, I thought I was in Disney World. And of course I bought cool Liberty paraphernalia.

At the base of the statue, I decided I had had enough for the day. My legs were tired and I was exhausted. But there was one last thing I wanted to do: I wanted to walk around the island to the very front of the statue, and look up at Lady Liberty like John Stossel did on an ABC special about freedom and liberty. Maybe next time I'll just spend the day at Ellis.

Have your voice heard
Send letters to the editor with your name, grade level and major or campus affiliation to The Beacon in the Student Center 310 Or e-mail us at beacon@student.wpu.edu

Alum shares enthusiasm about WPU students' potential

Dear William Paterson Scholars:

I want to congratulate you on your outstanding academic achievement. I wish I was able to share this experience with you, but I was not able to due to job commitments. It was an honor to have been asked to deliver the Keynote Address at the luncheon, because I too was a WPU scholar.

There have been some remarkable scholars before you and you are adding to the wonderful richness this University offers. My degree has opened many doors for me and I am confident it will do the same for you.

Many of you have big dreams of making an impact on society. Some of you may not realize it, but you are already making an impact; on campus, in the classroom and in your own lives. I want you to realize your goals and potential. I cannot tell you what lies ahead and what will astonish you, but I can tell you that the best way to predict the future is to create it.

As students of William Paterson, you are the vanguard of your generation. You are among the group who will help determine the future. You are now at the point in your lives at which you can move beyond the achievements of those from whom you have learned.

Recently my graduate school advisor at the University of Massachusetts told a group of stu-

dents: "Go out and teach us what we could not teach you. Do things that we think are impossible. If you become scholars, write the book or article that we said could not be written. If you are scientists, prove the theory that we thought couldn't be right... If you are in business, start a company that we couldn't even envision." My advisor's words are not just rhetoric. It becomes the responsibility of each generation to move into unknown territory.

The experience you have had at William Paterson has not provided you with all the answers. That is not the purpose of education. Your William Paterson education gives you the potential — more than that, the responsibility — to be a leader. The time has come to fulfill that potential and exercise that responsibility.

The mission of a university like WPU goes far beyond preparing graduates for productive careers. A great education must include a moral foundation as well as a structure of skill and knowledge.

My father, who dedicated his life to education recently put it this way: "Character without knowledge is weak and feeble, but knowledge without character is dangerous and a potential menace to society."

Today's America won't achieve anything if we graduate young people who are brilliant but

dishonest, who have great intellectual knowledge but really don't care about others.

Dr. Martin Luther King Jr. put it more succinctly when he said, "We make a living by what we get; we make a life by what we give." I urge you to be honest in all your academic pursuits, give back to those who are less fortunate than you and to always say thank you to those who have helped paved the way for you.

As I contemplate the challenges that face you, I recognize that you will have to work hard to make things better, either for yourselves or for the world in which we live. When I consider the education you have received, the obstacles you have already overcome, and the character you have exhibited here at WPU, I can only conclude that you will achieve both success and goodness.

I congratulate each of you, and wish you the best of continued success. If you ever need assistance, please feel free to e-mail me. I am never too busy to address the needs and concerns of students, most importantly William Paterson students.

Marc Williams

Class of 1997 BA; Sociology

E-mail: mjjw_69_2000@yahoo.com

(Be heard.)



It's **free** email
you send in
your own voice.

Plus voicemail
and fax
all in one place.

Stop typing and start talking!

Think of it. Your real voice in email – with fax and voicemail included in one, nice neat place. Register. Click. Speak. Send. Wham! People get the real you – and they don't even have to have onebox to hear from you. And guess what? You don't have to change your current email system. That's right. Nothing to buy, change or think about. Finally, the kind of email that speaks your language. Sign up now at www.onebox.com.

onebox.com

Free voicemail, email and fax — all in one place. www.onebox.com

THE INSIDER

Page 9 • William Paterson University

Monday, March 27, 2000

Doot's Video Dissertation

This Week - House On Haunted Hill (1958)

By Frederick F. Doot
Insider Writer

Last year, "House on Haunted Hill" was remade starring Academy Award winning Geoffrey Rush (Best Actor, "The King of the Kings", 1996). It was panned by reviews and did poorly at the box office. The filmmakers apparently did not pay attention to Gus Van Sant's "Psycho" remake a year before which had similar results. When will filmmakers realize that remaking a classic horror film and maintaining the authenticity and chill of the original is virtually impossible?

"House on Haunted Hill" begins with a stutiek, followed by two floating heads describing the past and present of the house on Haunted Hill. Seven people have previously been murdered at the site, and now not even the house's owner will stay overnight. That is until millionaire Frederick Loren (Vincent Price in a perfect role) offers a few guests \$10,000 to stay the night. The caretakers will lock the solid steel door behind them at midnight, and no one can leave (or escape) until morning. Then, each of the guests will receive a gun (in a tiny coffin), and then they are on their own. Sound like fun? It is.

"House on Haunted Hill" is unlike what I expected. I saw the film as a small child, and it frightened me, but I never knew or understood the plot. Perhaps I was merely amused by the dancing skeleton.)

Now, I realize the film has a much humor in it as horror. The film is "dead" serious at some points, and comical during others and Vincent Price is at his best hosting the deadly party. "House on Haunted Hill" does seem a bit dated, but do not let that dissuade you; you will be entertained and enjoy watching this Horror Classic.

In-Theater Thesis: FINAL DESTINATION

By Frederick F. Doot
Insider Writer

Special Thanks to the LOEWS THEATERS of Wayne for sponsoring this week's IN-THEATER THESIS.

Every human is born full of energy, life and hope. But eventually, everyone dies.

The characters in "Final Destination" soon realize this. Shortly after boarding a plane, Alex Browning, played by Devon Sawa, has a vision of the plane exploding upon liftoff. The scene is terrifying as baggage and bodies begin flopping around before it becomes a fiery inferno.

His hissy fit over the dream kicks himself and a few friends off the plane. Moments later, the plane explodes. Alex has just saved six lives. But people are not happy. The survivors resent Alex (for a reason hard to fathom. It is apparent the writers needed visible antagonists.) There are two goofy, stereotypical FBI Agents who randomly appear throughout the film when necessary to "fix" things. Their purpose? I'm not sure. And there is death, represented by a slight breeze and an occasional warped shadowy reflection seen

by its "prey" moments before they kick the bucket.

"Final Destination" offers an interesting and potentially thought-provoking and exciting premise; can we trick "death" and fool the inevitable? Is there any way to figure out a pattern for death, and to "skip" your own

Unfortunately, the modes for them being knocked off is not only ludicrous, but excessively gory. With dozens of teeny-bopper horror films being released the past few years, most standard acts of killing have been shown. This film tries to be creative knocking off its characters, but takes leaps and



Photo courtesy of yahoo.com

Ali Larter, Devon Sawa and KeKerr Smith in Final Destination

death temporarily? "Final Destination" tries to answer these questions. Unfortunately, it does so in the least conventional and entertaining way. Characters act not only irrationally, but also unrealistically. Fortunately, they soon begin dying one-by-one.

bounds over the line of realism, and leaves the viewers shrugging their shoulders and chuckling at the absurd happenings on the screen.

I would have thought director and co-writer James Wong who directed many episodes of the "X-

Files" and "Millennium" would know better. At some point during the farce, Alex and Clear Rivers (that's her name) played by Ali Larter scale a wall to the roof of a funeral, and climb through the ceiling to find a mortician (Tony Todd, previously the "Candyman") "prepping" their recently deceased friend by poking the poor lad with various instruments and tubes.

"Teenage Mutant Ninja Turtles: The Movie" was scarier and more realistic.

I was first impressed seeing a neat opening credits montage, an exciting but ill-timed plane explosion (in the shadows of the TWA Flight 800 tragedy, also en route to Paris with students), and the beautiful Ali Larter fill the screen (formerly the whipped-cream bikini girl of "Varsity Blues"), but things soon went drastically dropped downward (six feet under to be exact.) As Alex attempts to figure out when death will say "when", I wish the director knew when to spare me from this painful, lethal film.

For a wonderful film successfully pitting man against death, check Ingmar Bergman's 1955 classic, "The Seventh Seal".

Final Destination's final grade: D

Drama to be presented

"Fires in the Mirror: Crown Heights, Brooklyn and Other Identities" by Anna Deavere Smith, a drama focusing on the racial crisis that rocked Brooklyn during the summer of 1991, will be staged at William Paterson University on March 30 and 31, April 1 and 3 at 8 p.m., and April 2 at 3 p.m. in Shea Center on Campus.

Tickets are \$10 standard and \$7 for the William Paterson community, senior citizens and students. Ed Matthews, head of William Paterson's Performing Arts Resource Management Unit, directs the production which features a cast of student actors.

When "Fires in the Mirror" was first staged at the Joseph Papp Public Theatre in 1992, the New York Times described it as "quite simply the most compelling and sophisticated view of urban racial and class conflict that one could hope to encounter." Revolving around the riots that occurred after two killings, this play takes a searing look at the misunderstandings of, and sympathies between, two cultures living in the community of Crown Heights, Brooklyn, NY, NY. Anna Deavere Smith has created a theatrical event distilling the lives and voices of 26 of the incident's survivors in a visionary amalgam that touches every

American regardless of race, color or belief.

Featured in the cast are Sherry Capers-Dock of Paterson; Tara Ricart of Saddle Brook; Ian Schoen of Covington, La.; Mary Tiritilli of Cedar Grove; Monique Vazquez of Irvington, Tx; and Ivy Waller of Clifton.

Matthews is a graduate of the State University of New York and Plattsburgh, and holds a master's degree from Idaho State University and a master of fine arts degree in directing/acting from Sarah Lawrence College. He has more than 15 years of experience as a professional lighting designer for metropolitan area theatre productions.

William Paterson University, one of the nine state colleges and universities in New Jersey, is dedicated to two key principles: academic excellence and student success. With an annual budget of \$96 million, the University offers 29 undergraduate and 17 graduate programs to nearly 10,000 students, and has 352 full-time faculty.

For additional information or to purchase tickets, please call the Shea Center Box office at 973-720-2371.

PAINTINGS ON DISPLAY AT BEN SHAHN GALLERIES

John B. Tracey, an artist who explores the relationship between image and layered space using the medium of paint and encaustic, will show a selection of his works from March 19 through April 21 in the Ben Shahn Galleries at William Paterson University in Wayne.

An opening reception for the exhibit will be held on Sunday, March 19 from 3 to 4:30 p.m. in the galleries. Gallery hours are Monday through Friday, 10 a.m. to 5 p.m. Admission is free.

Tracey's paintings produced over the past five years feature "repetitive use of a central image and the creation of an illusory space countered by an emphasis on the surface of the painting," says Nancy Einreinhofer, director of Ben Shahn Galleries.

"Using thin layers of encaustic over the simple iconographic image of a ladder set in a landscape-like space, Tracey calls attention to the surface and allows the process of painting to show through," Einreinhofer explains. "The synthesis of abstraction and realism creates a tension heightened by color."

Tracey received his bachelor of fine arts degree from Tufts University and the School of the

Museum of Fine Arts in Boston. His works have appeared in solo exhibits at the Miller/Block Gallery and the Howard Yezerski Gallery in Boston, Massachusetts. He has also participated in group exhibitions at the Duxbury Art Complex Museum, Boston Center for the Arts, and other galleries in Massachusetts.

Also on view in the Ben Shahn Galleries from March 20 through April 21 are "Kathrin Hilten" and "A woman's space is..." curated by Maureen Riley.

For additional information, please call the Ben Shahn Galleries at 973-720-2654.

Famous Quote:

"The artist is nothing without the gift, but the gift is nothing without work."

**Emile Zola
(1840-1902)**

Top 10 R&B/Dance Singles

10. Aaliyah "I Don't Wanna"
9. Sammie "I Like It"
8. J-Shin, Feat. Latocha Scott "One Night Stand"
7. Jagged Edge "He Can't Love You"
6. Mariah Carey feat. Joe and 98 Degrees "Thank You"
5. Joe "I Wanna Know"
4. Sisqo "Thong Song"
3. Montell Jordan "Get it on Tonight"
2. D'Angelo "Untitled(How Does it Feel)"
1. Missy "Misdemeanor" Elliott feat. Nas, Eve, & Q-Tip "Hot Boyz"

DOWN ON THE CORNER:**Weekly Jamband Review**

By Eric Kiefer
Insider Contributor

Okay, start rolling up those pennies and picking up change from the 7-Eleven parking lot, because the next few weeks are going to remind you why you go to shows. The coming of spring is a notorious time for the headliner bands to bust out with some new tours, and this spring is no exception. But enough of my idiotic babbling, let's get down to the nitty gritty, and let's get this show on the road.

moe. returns to the east coast with a load of fresh shows celebrating their new CD. Starting their run is a 3/30 show at Harro East in Rochester.

From there, the band will play the next day at the Hall of Presidents in Hamilton, NY. Then, on April Fool's Day, for what promises to be the definitive show of the tour, moe. will be playing at The State Theater in New Brunswick. This is the show not to miss, but I don't have to tell you jam fans about that. The band is also celebrating the new CD at a release party at the Wetlands in NYC on 4/10. You couldn't ask for moe. (Sorry, couldn't resist.)

You Phishheads out there probably know about Pork Tornado's (Phish drummer Jon Fishman's band) East coast tour. Definitely give this eclectic band a shot just for the sake of Fishman. They'll be playing at the Wetlands on 4/4 in addition to many other shows (see Phish.com for more info).

Then, for you funk fans, give it up for Original P, the original members of Parliament Funkadelic (Do I need to explain any further?), who are playing with Sweet Mama Thunder on 4/7. If I need to tell you who these guys are, just send

a letter to *The Beacon's* beatdown department.

Original P and SMT are funkifying the Middle East Down in NY, so go check them out now, y'hear?

The acid jazz pioneers Martin, Medenski, and Wood are playing 2 nights at the Angel Orensanz Center for the Arts in NYC (on 4/12 and 4/13). I was lucky

enough to see MMW at Asbury Park a year ago, and I guarantee that any jazz fan will have a divine revelation at one of these shows.

Jorma Kaukonen (the finger-picking underground guitar hero of Jefferson Airplane and Hot Tuna fame) is playing a solo show on 3/29 at the Lost Horizon in Syracuse. Trust me, this guy's been around since the Grateful Dead days of the 60's, and has played a number of phat shows with the best of the musical world. Hot Tuna rules!

On the horizon, get set for String Cheese Incident on 4/22. These bluegrass influenced jammers are playing at the Hammerstein Ballroom in NYC.

This is dynamite stuff, so go and check them out if you haven't already.

Also playing at the Hammerstein is Widespread Panic. Get set for these extraordinary musicians on 4/12.

Lastly, DJ Logic is playing a series of dates that include a 4/1 show at the Water Street Music Hall in Rochester. This longtime MMW friend mixes a unique blend of jam music and DJ technology, so this show is definitely worth a shot.

This is only the start of what promises to be a long and jam filled spring, so send those letters home for money son, and I'll see you at the shows.

Popular Cafe hosts talented artists at the Eclectic Series performances

By Blake Driver
Insider Contributor

David Wallingford was a compliment to Café Eclectic, and that's saying a lot for a café that needs no compliments. If any of you café creeps out there haven't yet been to Montclair's mantelpiece, it's time you had a real coffee-going experience. And for those of you who missed David Wallingford's performance last week, you can make up for it by reading on...

Wallingford is a clean-cut, highly stylized and very refined musician and performer. As a solo artist he really puts to shame any need for backup, which is why I was surprised to hear that he normally tours with his band, whom he respectfully refers to as "his famous band." They recently released an independent album entitled "On the Qui Vive," and David worked with Vaganza on their 1998 release from Electra. Pretty extensive group work for such a brilliant soloist.

For his Eclectic performance David played guitar and keyboard, two instruments highly prized in the café circuit, and treated his caffeine-fueled audience to some very laid-back, soothing pieces. David writes all of his stuff, and if you're trying to get a mental picture, he attributes his musical influences to

Cole Porter, Gershwin and the Beatles, which could account for his suit-and-tie stage attire. On occasion he did invite his friend to the stage to back him up on the congo, which just gives you an idea as to how far-reaching his musical inclination goes. All in all, David Wallingford is a true performer who knows what he's doing on stage, and his professionalism inspires confidence in his audience.

This wouldn't be an eclectic series unless I reviewed the other group who performed at Café Eclectic the night after Wallingford. I know what you're thinking — why was I at the same café two nights in a row? Well, they have very addictive Fran-chescas, only \$3.50 for a tall. Really, you must go try one.

Vesper, an unpretentious three-person band, was just what the audience needed to sit back and enjoy their coffee. Vesper and Ben Stamper are a married couple who lead the band on vocals and guitar, while Daniel Brindley backs them up on the Djembe (a congo-like drum) and accordion. My favorite piece was one that they wrote for submission to the movie Titanic, called "Survival Song," but which lost to "The Heart Does Go On." I felt their song should have won, because it really was less poppy and less cliché. But fortunately for all of us they have added the song

permanently to their repertoire.

When I spoke with Ben about Vesper's sound, he said he would place it along the lines of Ambient, with influences like Daniel Lanois and Steve Earl. It was also very evident that Country music has played a big role in their development. Aside from the guitar, Vesper Stamper also plays the mandolin and the Bodhran (no pronunciation of the 'd'), which is and Irish drum.

Well, thank you for reading on, and I hope you've enjoyed this medley-mix of artists in review. I caught these performers by accident at Café Eclectic.

Want to see a performance at

Café Eclectic?

Performances are every Monday and Tuesday night.

Directions to the café:

take Rt. 3 to the Valley Road/Montclair exit
follow Valley all the way down to Bloomfield avenue.

Take a left onto Bloomfield and find the café at 444 Bloomfield.
973-509-9256

LOOP

Lounge

ASTRO

WEDNESDAYS

50 cent draft beer

\$2.50 Corona

\$2 Jager

Girls Free Admission

Open Wed.- Sat. Till 3 AM

Every Thursday
\$2 Import Drafts
Live Music
Shows Begin 11 p.m.

Thursday, March 30:
Skrap
Stand Alone
Girls of Porn

FRIDAY
Special Midnight Shows
\$2 import draft before midnight
DJ spins dance mix after show

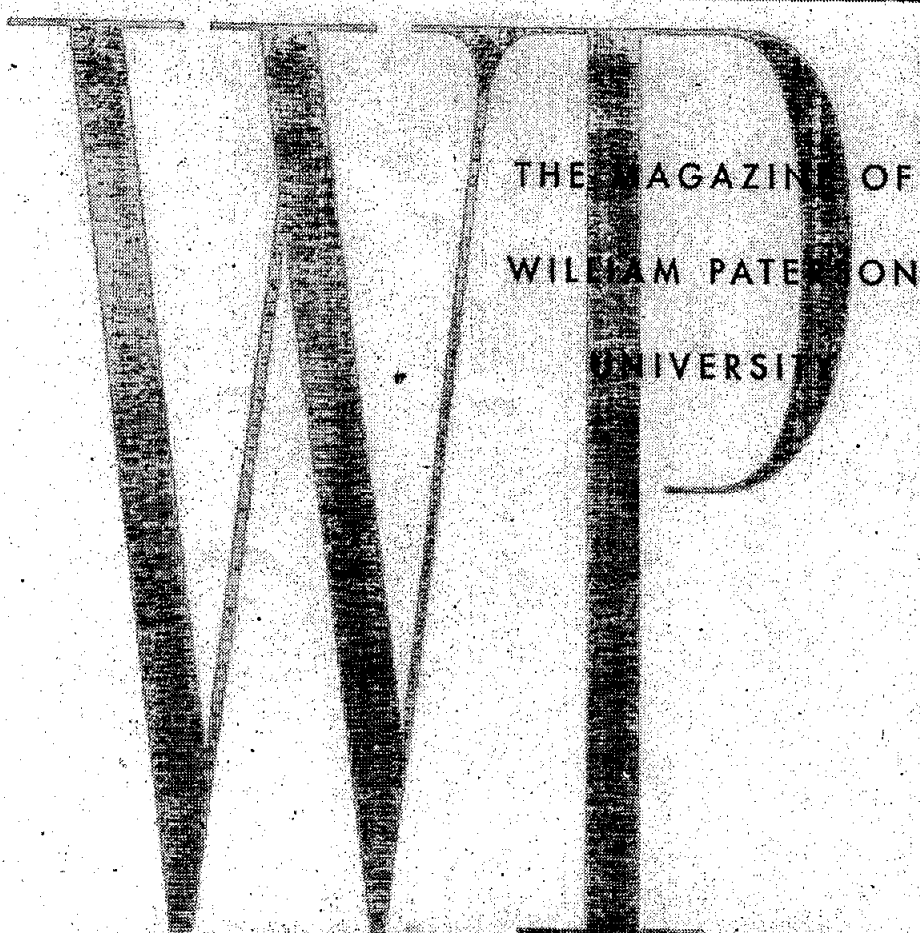
Friday, March 31:
Stroker 383
Them

SATURDAYS

Girls Free Admission ~ \$2 import pints before midnight ~ DJ spins smart dance mix

Directions: Rt. 46 East to Rt. 3 East to Passaic Ave. Nutley/Passaic exit, go to right of ramp, go three traffic lights & make a left, (Van Houten Ave.) Go to first traffic light, make a right onto Broadway.

373 BROADWAY PASSAIC PARK 973-365-0807



WE'RE LOOKING FOR YOUR BEST SHOTS!

WP, the Magazine of William Paterson University is seeking new and interesting photos that depict University activities, student life, and campus scenes.

\$250 Award for the Selected Photo

Topic: Photographs of University activities, an element of William Paterson student life, or a campus scene.

Who May Enter: All students of William Paterson University.

Medium: 35mm color transparencies, black and white, or color prints. For black and white or color prints, the original negative (or transparency, if the print was made from a transparency) should be available, if selected.

Specifications: Color transparencies must be mounted in standard 2x2-inch cardboard or plastic slide mounts. Prints may be any size up to 8 x 10 inches. No glass mounts or framed photographs will be accepted. Photos must have a vertical orientation.

Entries: You may enter up to 6 individual photographs. They may be all color transparencies, all color or black and white prints, or a mixture. Your entries must include your name, address and phone number on a separate sheet. If you wish your pictures returned, you *must* include a self-addressed, stamped return envelope large enough to accommodate your submission. To avoid damage, entries should be packaged in cardboard for mailing. Send to Graphic Design Department, Office of Publications, College Hall, William Paterson University, Wayne, NJ 07470.

Closing Date: Entries must be postmarked no later than Thursday, June 1, 2000. If delivered, entries must be received by 5 p.m. on June 1, 2000.

Award: One \$250 cash award presented by the editors of WP.

Judging: Entries will be judged on the basis of creativity, photographic quality, and effectiveness in expressing an aspect of William Paterson University. Winner to be determined by September 15, 2000.

Restrictions: The winner must certify that he/she owns all rights to the photograph selected. The photo will become the property of William Paterson University and may be used in the magazine and other University publications.



WILLIAM PATERSON UNIVERSITY

300 POMPTON ROAD • WAYNE, NEW JERSEY 07470

WWW.WPUNJ.EDU • 1.877.WPU.EXCEL

*If you don't like what
you see -- then
help us to change the
Insider section!
We need YOUR help
and input*

*Join us at a meeting:
Meetings are Tuesday at
12:30 p.m. in SC 310
or call Jennifer
720-2756*

Band Information Sheet Musicfest 2000

Any band interested in playing at Musicfest '00 must submit a tape either in person, to me Amanda Ellis, or my fellow chairperson, Fernando Sanchez, or Don Phelps in the Campus Activities office. The deadline

for all tapes is April 3, 2000. Any tape handed in after this time will not be considered for this year's Musicfest. Once the tapes are received a committee ranks the music on a 1-10 scale. The four bands with the highest tallies will be the bands performing this year. Musicfest '00 is on Wednesday, April 19, 2000.

Each band selected will play forty minutes. A prize will be announced once all the components for Musicfest are budgeted. It is preferred that all bands have a sponsor whether it is a Greek organization or a campus club. Upon announcement of the four performances, each will be responsible to sign a contract accepting that they will be playing that day. A soundman is provided and members of the selected bands must bring their own instruments. When handing in your tapes/ CDs make sure it is rewound to the song you would prefer the committee to hear, and don't forget to label them!

Thank you,

Amanda Ellis, Beta Zeta Phi
Fernando Sanchez, Lambda Theta Phi

Dieselboy
System Upgrade
 Moonshine Records

Dieselboy is at his finest with the recent release of his latest mix *System Upgrade*. Once again, the talented Drum n Bass DJ gathered fresh new tracks, allowing for unique sounds and styles that are new and provocative. To sum up the sound of this record: a smooth, penetrating deep intro rolls you along through a seamless array of pounding beats and deep penetrating sounds, eventually leading up to a final chorus of singing girls and thundering breaks.

As American's Number 1 Jungle DJ, Dieselboy has clearly outdone himself this time. Featuring Dieselboy's own track "The Descent" (Decoder remix), Ram Trilogy's "Mindscan" (Ed Rush and Optical Remix), Baby Namboos' "Ancoats 2 Zambias" (Dillinja remix), E-Sassin's "Symptom," and Hive's "Ultrasonic Sound" (Dillinja remix), the record is truly at the top.

-Jennifer Fletcher

Supergrub
Challenger
 Ghetto Crush Industries

In the year 2000, it seems that there are very few things that haven't been done musically. The world has borne witness to new musical styles and combining of previous styles for all new, original sounds. For example, just look at the mainstream's embracement

of Hip-Hop influenced Metal, which was considered fringe just a few years ago. One combination that hasn't really been touched is that of modern R&B, Punk Rock, and Rock and Roll. Enter the Philly based band, Supergrub.

On their third album, *Challenger*, Supergrub pack 19, untitled tracks tight with incredible Rock and Roll instrumentation and R&B influenced vocals.

UNDER
 The Microscope

Along with that, they also drop a little Reggae/Dancehall in the mix on tracks six and ten. Frontman Ben Kenney and bassist Chris Shar are the only steady members of Supergrub at the moment, with rotating drummers, that have included Chuck Treece (Bad Brains, Underdog, Incognegro, Merad) and Mary Harris (Fishbone, Weapon of Choice, Spearhead). Kenney's vocal range is incredible, and cannot be compared to that of any current Rock vocalists. Some of the standout tracks on *Challenger* include tracks three, five, fifteen, seventeen and nineteen. Another great song is track seven which features Ben's brother Ted, sharing vocal duties, and singing his heart out. The fact that this band is currently unsigned is a shame, and a sad commentary on what Record labels are looking for right now. Because of their current unsigned

status, *Challenger* is a hard to find disc, however it can be purchased at small record shops, including Flipside in Pompton Lakes. Another way for one to purchase this record is to visit the band's webpage, www.supergrub.com.

While they are waiting to be picked up by a label, Supergrub is not exactly relaxing. They are a featured act at Black Lily, which goes down every Sunday night at the Wetlands in Manhattan. They appear every fourth week, and Ben plays bass for the R&B band, The Jazzyfatnastees who appear every Sunday. Kenney will be doing double duties when Supergrub tours Europe with The Jazzy starting in April. After they come home, Supergrub will be making various area appearances. Supergrub will be signed very soon and can expect to get radio airplay, if the right ears hear *Challenger*. Be on the lookout.

-Jacob Claveloux



photo courtesy of supergrub.com
 Supergrub Frontman Kenney

If it sounds too good to be true, it is

By Illsa Schertzer
 Insider Writer

Did you do anything this Spring Break? I did! I went to Cancun. Now let me tell all you people, DO NOT go with a travel company! I as well as many other students were at the will of our tour companies in Cancun.

We were lured in with the promise of airfare on a major airline, good hotel, special admission to clubs, and 30 free hours of drinking for only \$699! How can anyone go wrong! As soon as I called, I should have known. The price went up with taxes and \$30 for traveling during the busy season, \$20 here, \$20 there, it all added up. In the end it came to over \$900. This was still a good price, so we booked the trip. But it got worse....

We were told that we would leave sometime during the week-end of spring break, but we would not know until two weeks prior to departure.

Three weeks prior to departure, we each received a letter from our tour company and a major airline asking for \$30 for gas because the prices had gone up. Ten days before we left, we finally received our flight information.

We were to leave Saturday afternoon on an airline that did not exist. We were told to call 24 hours before the flight to find out if there was any delay. I called and sure enough, it was postponed a few hours. I called back numerous times after and received different

times of departure, ranging from 9 P.M. to 2 A.M. the next day.

We were assured we would leave by midnight.

So off we track to JFK airport. When we get there, we have to figure out where they put the "charter" airline for that day. For 3 hours 300 or so college students waited out in the cold before the airline opened their doors.

I have never seen such a mob in my life. There was NO order whatsoever. People were pushing left and right to get to the front of line.

This was 30 minutes before our flight was to leave. Once we got through the mob, we thought we were free to get our vacation started but we were dead wrong.... We ran to catch the plane, but it was not there.

We sat down along with 300 other students to wait for our flight. While we were sitting we began to talk to others and found out the 9:00 flight did not leave yet and it was 1 AM!!! Soon the crowd started to get antsy and whenever we asked about information we were told we were to board any minute. This turned into 4 hours. At 6 A.M. the flight finally boarded and everyone was too tired to yell. When the plane left at 7 A.M., we finally thought we'd begin enjoying our vacation.... but we were very wrong.

Next week I will tell you guys about the rest of my vacation. But until then, please be careful when making vacation plans.

CREATABLE SOURCE
DANCE ENSEMBLE
Explosion
 Will be holding their
 5th annual
 Dance Presentation
 Featuring Special Guests
 Monday, April 3, 2000
 7:00-8:30pm
 Student Center Ballroom
 Refreshment will be served with light music

In Review: "The Next Best Thing"

By Katherine Scala
Insider Writer

Abbie (Madonna), is a lonely, mid-thirties yoga teacher, who can't seem to find true love. She always thinks she does, but it always ends in disappointment. Her problem is that she always seem to want more than any man can give her.

After teaching classes for pregnant women, she finally realizes that her ultimate goal is to have a baby. Problem is- there's no father.

Meanwhile, her gay friend Robert (Rupert Everett), always seems to be around whenever she needs a shoulder to cry on. One night, they get a little tipsy after celebrating the Fourth of July and wind up sleeping together. Surprise, Abbie is pregnant and the two of them discover parenthood together, despite the fact that he is a homosexual.

And so the two live-on, happily with their son, until Abbie finally meets someone. Robert is fine with this, at first, because he dates around all the time. But after a while, he becomes very upset because Ben (Benjamin Bratt) seems to be taking over the role of the boy's father. Also, Ben gets offered a job across the country and plans on taking Abbie and the boy with him. This leaves many issues, as the rest of the plot only begins to thicken.

I am torn between loving and hating this film. While I enjoyed seeing Rupert Everett and Benjamin Bratt (Julia's man) on screen, Madonna has had better days. But I'm not surprised that she wanted to play this role because she is an unwed mother herself. It probably wasn't too difficult to play this part for her.

The one thing that really bothered me was how quickly the story moved along. One minute people were throwing them a baby shower, then the next, she had the baby. Once she had the baby, you heard him cry, and then the kid was 5. Okay...

However, I must admit, fashion was excellent in this movie. Madonna wore a lot of funky clothes that I really liked and Rupert, well, he just looks good in anything he wears. (So does Ben!)

Also, the setting was not bad. It was set in San Francisco, so seeing pools and people in warm-weather clothing always makes me feel so good!

Overall, I would have to say that this movie was decent. Madonna could have been a little less dramatic (that's a poor choice of words, I know).

She whined a little, but hey, who cares? When you're Madonna, you can say anything, whatever way you want. She is still fabulous to me, even though I didn't particularly like her this time around. I give it 2 1/2 screaming babies.



photo courtesy of yahoo.com
Madonna and Rupert Everett in photo shot for movie

"Follow the money!"

—"Deep Throat" to Woodward and Bernstein

"Show me the money!"

—Rod Tidwell to Jerry Maguire

"It's the economy, stupid!"

—James Carville to the Clinton campaign

Take their advice—

Business and financial journalism is the fastest-growing area in the news business, in every medium. Demand greatly exceeds supply.

The Master of Arts in Business Journalism at Baruch College/ CUNY offers:

- **Challenging Courses**—From the basics to specialized coverage of entrepreneurship, technology and international business.
- **Superb Faculty**—Three veteran business journalists on the full-time faculty. No other college in the nation can match this.
- **Affordable Excellence**—As a public college, Baruch's tuition is a fraction of that of private universities.
- **Flexibility**—Full- and part-time study. Start in spring or fall. Financial aid available.
- **Great Location**—26th Street and Park Avenue South.

For more information or to request an application:
phone: (212) 802-6640

e-mail: wsas_graduate_studies@baruch.cuny.edu

web: www.baruch.cuny.edu/slas/MABusJ

Baruch College
The City University of New York

Salome's Stars

ARIES (March 21 to April 19) New opportunities spring up for the Aries. Kick up these heels and go, go, go for them. Remember: Someone special will be rooting for your success.

TAURUS (April 20 to May 20) Indulge your love of beauty. Buy something marvelous for your home. Then plan a romantic dinner at a special place with that special person.

GEMINI (May 21 to June 20) Your diligent search for the truth pays off. You can now go ahead and make that decision fully armed with the facts. Expect some resistance to your plans.

CANCER (June 21 to July 22) Travel is flavored. But be prepared to be flexible in planning your trip. A family situation may cause you to delay your original departure date.

LEO (July 23 to August 22) Be careful to whom you confide your secrets. While you certainly have your admirers, you also have detractors who would love to puncture the Lion's pride.

VIRGO (August 23 to September 22) That family problem still needs your attention. It would be unwise at this time to let things slide. Things start to look more promising on the job.

LIBRA (September 23 to October 22) Your mate seems to feel increas-

ingly ignored. Try for a better balance between your home and work commitments. Start with a romantic weekend getaway.

SCORPIO (October 23 to November 21) Missed opportunities usually come from miscommunication. It's not too late to correct the wrong assumptions. A timely call can help re-establish important contacts.

SAGITTARIUS (November 22 to December 21) Your usually keen sense of direction needs some sharpening this week. Stay focused on your goals despite those pesky distractions. Your efforts will soon pay off.

CAPRICORN (December 22 to January 19) Don't automatically reject suggestions from friends and family members. Some of their ideas might be helpful. Check them out before you decide to chuck them out.

AQUARIUS (January 20 to February 18) Expect to be pleasantly startled when a promise from the past finally comes through for you. Use this as an opportunity to restart that long-delayed project.

PISCES (February 19 to March 20) An air of conspiracy dominates the work-place. Avoid taking sides. This is one time when you need to concentrate on being your own best friend.

Faithful fans follow Queen

By Blake Driver
Insider Contributor

Once again, WPU's own CinDee-Liscious stole the stage at Connexions, with a little help from some friends.

Back to Boonton we went in search of CinDee. We just couldn't get our fill after her debut performance so she dazzled us with a gracious encore. She knew we liked the long black wig, so she wore it for both numbers this time. Thanks CinDee baby!

Decked out in her friend Jen's most fabulous two-piece gown and complementary cloak, Dee-Lish and her stuffed bra pulled enough tips to pay her tuition next fall and managed to turn some straight boys on.

To open the show was, no, not Big Blanche (she was on a Carnival cruise to Queensland) but a hot Latina named Josie who has a thing for Salsa and hamburgers.

For tips she prefers fries and milkshakes to money. After her first number (or should I say numero?) she called out Miss Connexions '95 contenders Trinity, whose performance of "My Love is Your Love" rivaled Whitney's, and then Rebecca who avoided the whole diva thing and went straight for Punkie Brewster in fishnets and knee-highs.

Then came our Queen, our

reigning royal highness whose ovation began before she even got to the stage. Before Josie could call her out she had to laugh at me for wringing my hands in excitement in the front row. I'm sure I wrung my hands for the whole audience, because once CinDee's name finally rolled off Josie's rouge lips the crowd (ninety-five percent WPU students) went wild.

She had some new moves for us this time, though I think she's getting a little too comfortable in those high heels. The highlight of her act came at the climax of her first number when she de-cloaked in a flash, sending her cloak to the floor in a fit of damnation that proves her veins are wrought with Diva blood. Either she knows how to work a cloak or she practiced that move for a really long time. It had its affect on the audience that's for sure, evoking shrills and caterwauls that only a drag with true Queen power knows how to command.

CinDee has not announced her next performance, but she would like to thank all of you who took my advice and went, as would I. It was the fullest house I've ever seen in Boonton, and I'm sure Connexions' fabulous mamas outed a few closet drag-show fanatics!

Campus community provides residence for dozens of stray cats

from CAT page 4

Meanwhile, others in the community, like Leslie Sasso-Sherin, 29, a senior at WPU and North Haledon resident, oppose cat-confinement laws, insisting that these "natural predators" be allowed to roam free to control the number of rats and mice breeding in the area, especially at the university.

Local humane agencies are finding free-roaming cats taking up more of their time and cage space. Moreover, many agencies are struggling to find comprehensive solutions to reverse the trend.

"I haven't seen the cats but I've heard that people are feeding the stray cats in the area," said DeCando. "William Paterson has acres and acres of property and it's such a remote area up there, people could just go over and drop (unwanted cats) off and get away with it. It's not fair for the animals to be out there by themselves. They should be where it's warm."

He said those who get caught dropping off a cat or any kind of stray pay a \$1000 fine and can get six months in jail.

"Normal people would bring the cats to the animal shelter and adopt them that way, the proper way," said DeCando. "If it's friendly we'll adopt it out. But first an animal should be spayed and neutered and then be given a home."

Caffarelli believes that the strays may be a danger to faculty and students.

"If the cats have rabies, if they've been in contact with another rabid animal, then I think they are dangerous. We are sometimes very naive and we think it's just a cat. We don't know where it's been and we want to pick it up, bring it into our room or building without understanding or knowing where

the cat has been. I think that's potentially dangerous to anybody who is going to do something like that."

Throughout time, wherever cats have roamed, controversy has followed. Cats have been loved and they've been despised-worshiped in ancient Egypt, feared in medieval Europe. Some say cats are warm and friendly, while others say they are cold and distant.

Arguably one of the most adored animals in America, more than 60 million cats live in U.S. homes, according to the Humane Society. But nearly as many live on the streets-abandoned, feral, or stray-now ignored by those who domesticated them so many years ago.

Melissa Sparks, 26, administrative assistant at the national headquarters for the Humane Society, said most of the stray cats are homeless, unwanted, unloved and/or abused. Abused refers to neglect in a cat's life such as being dumped, left behind during a move, or forced by an owner to be an outside animal.

Caffarelli thinks students have contributed to the problem by bringing animals to WPU.

"Then they get here and find out they're not supposed to be here and they just let them go. I also think probably people from the community (drop them off). It's an excellent, for the lack of a better term, dumping ground for animals and pets that you don't want."

If the cats at WPU are feral (wild) cats, they have minimal or no contact with humans, and probably will bite if approached. In Sparks' opinion, the best solution would be to call the local humane agency or shelter to try and adopt them out. Factors for adoption include the age and temperament

of the cat. Cats, which cannot be adopted, will more than likely be euthanized (destroyed). Therefore, those that are unadoptable, in the best case scenario, should be trapped, spayed, neutered and then released.

"Folks get kittens and when the kittens grow up or when students move out and realize they can't have pets in a dorm or something they abandon the cats and leave lit-

few cats fall into these clear-cut categories; most land somewhere in the middle, and some pass from one to another over time. It's hard to say where one group ends and another begins, yet it is clear that many cats find their end at the nearest shelter, alley, or as in this case university campus.

Many communities have passed laws to sterilize owned cats or keep them indoors, and many shelters

behavior and educating them," added Sparks.

HSUS members believe that every community has a legal and ethical responsibility to address problems associated with free-roaming domestic cats. Free-roaming cats and owned cats allowed to go outside as well as stray and feral cats are often hit by cars or fall victim to starvation, disease, various poisons, attacks by other animals, or abuse by humans. Among other problems, free-roaming cats feed on smaller animals, birds, and other wildlife; spread diseases such as rabies; defecate on people's property; and cause car accidents. However, there are people feeding the strays at WPU.

"It's cold outside. Cat's are hungry," said DeCando. "Just like homeless people are hungry. I think people are feeding them even though there is a law you shouldn't feed them. I mean the state law says you feed them, you own them. But how could you go by and see a homeless cat, looking at you, begging for food? You have to have some kind of dignity and you have to have a heart. That's what this whole job is about - having a heart."

Sasso-Sherin opts for a humanitarian approach.

"I think that once the problems facing cats in the community have been reviewed and some kind of policies are put in place at the shelters, WPU and the surrounding communities will be ready to create practical and humane solutions for the people and cats in the area."



photo by Laurie Koba/The Beacon

A stray cat hides in the bushes in back of the Student Center from a desperate and persistent Beacon photographer.

tle or no food and water for them. Something should be done about the situation at the school, definitely," said Sparks.

The challenges that cats pose are complicated because the animals themselves are complicated. The difficulties begin with attempts to define the animal. Terms such as "feral," "unsocialized," "community-owned," "stray," "outdoor," and "indoor" are often applied without any doubt, as if someone were plainly distinguishing a long-hair from a short-hair cat. Of course,

have developed innovative solutions to address problems caused by feral cats. But according to HSUS representatives, people are still finding that the vast majority of cat-related problems cannot be "cured" with legislation alone or with T-T-V-A-R-M (the acronym for trap-test-vaccinate-alter-release-and-monitor programs for feral colonies).

"Ultimately, cat abandonment and cat spaying and neutering start with people, and that's really tough-that is changing human

STUDENT VACATION CENTER		
Low Prices for Summer getaways!!		
The "Fun Ships" of Carnival <small>THE MOST POPULAR CRUISE LINE IN THE WORLD</small> 7nt Cruise Grand Caymen Cozumel & New Orleans from \$799pp	 European Wonder 8days 4 countries inc air from JFK from \$760pp	HEDONISM <small>RESORTS</small> 7nts All-Inclusive With Air \$1599pp
a graduation gift you'll never forget		
www.americanworldwidetrav.com		
OPEN SUNDAYS! 10-2	AMERICAN WORLDWIDE TRAVEL Wayne, NJ 888 867-2451	Great Vacations since 1969

LOSE 20 POUNDS IN TWO WEEKS!

Famous U.S. Womens' Alpine Ski Team Diet

During the non-snow off season the US Womens' Alpine Ski Team members used the "Ski Team" diet to lose 20 pounds in two weeks. That's right - 20 pounds in 14 days! The basis of the diet is chemical food action and was devised by a famous Colorado physician especially for the US Ski Team. Normal energy is maintained (very important) while reducing. You keep "full" - no starvation - because the diet is designed that way. It's a diet that is easy to follow whether you work, travel or stay at home. (For men too!)

This is, honestly, a fantastically successful diet. If it weren't the US Womens' Alpine Ski Team wouldn't be permitted to use it! Right? So, give yourself the same break the US Ski team gets. Lose weight the scientific, proven way. Even if you've tried all the other diets, you owe it to yourself to try the US Women's Alpine Ski Team Diet. That is, if you really do want to lose 20 pounds in two weeks. Order today! Tear this out as a reminder.

Send only \$8.95 - add .50 cents RUSH service to: MIDWEST ASSOCIATES, 3318 S. Glenstone, Suite 308, Springfield, MO 65804. Don't order unless you expect to lose 20 pounds in two weeks! Because that's what the Ski Team Diet will do

©1999

Got a Brain?
Got some Heart?

Then get your ticket to a career in the environment!

The Environmental and Public Health Program at Rutgers University offers you:

- A guaranteed five week internship
- Hands-on experience
- Contacts with employers
- An opportunity to earn up to 9 credits
- The one license that employers require, and pay for

The program runs five days a week, six hours a day, from June 5th through July 21st.

To qualify, you need:

- No need to total by this summer
- At least 23 credits in science

Call (732) 932-9271

email: epoh@aesop.rutgers.edu <http://aesop.rutgers.edu/~epoh>

Political satire comes to WPU

from **CAPITOL** page 1

400 shows per year across America. Consisting of 22 members, five of whom perform at each show, the group has recorded 18 albums, six during the Clinton administration, including *Sixteen Scandals*, *Lord of the Fries*, and *The Joys of Sax*. They have been featured on three PBS specials and many network and cable talk shows.

Their song parodies are heard regularly on National Public Radio's *All Things Considered*, where their specials are featured four times a year.

William Paterson's Distinguished Lecturer Series is presented by the William Paterson University Foundation, the Student Government Association and the Student Activities Programming Board.

Distinguished partners include: AT&T and Automatic Data Processing Inc. Benefactors include: The CIT Group; Uniqema Industries, Inc.; Record/Herald News; William Paterson University Alumni Association;

Interchange Bank; PSEG; and Warner-Lambert Company. Patrons include Hoechst Marion Roussel, Inc.; BAE Systems; Hoffman-La Roche, Inc.; Thomas Construction Company, Inc.; and Union Camp Corporation.

Sponsors include: AAA-NJ Automobile Club; Allied Signal, Inc.; Bell Atlantic; Castrol North America; Commerce & Industry Association of New Jersey; The Dime Savings Bank of New York; Dorfman, Abrams, Music & Company; Barbara and Robert Evans; Facile Holdings, Inc.; First Institutional Securities; Fluoramics Inc.; Gerber & Samson, Attorneys; ITT Industries; McBride Enterprises, Inc.; Dr. Edward Meier; Minolta; The Oppen Group; Passaic County Educational Council; Daryl and Stephen Roth; Ruder Finn, Inc.; Russ Berrie; Select Carriers, Inc.; State Farm Insurance Companies; Toshiba America Consumer Products; United Water New Jersey; United Yam Products Company, Inc.; United Retail Group, Inc.; and Variable Annuity Life Insurance Company (VALIC).

'Salute' to help graduates quickly fulfill all requirements for big day

from **SENIORS** page 1

ized announcements, etiquette seals, note cards, certificates of appreciation, return address labels and diploma frames. Class rings

will be sold as well. For students anticipating the long-awaited graduation day, get ready, the day is near. The finish line is within view, and people are ready to help with the day at WPU.

Students cannot withhold activity fees from groups they dislike

from **SUPREME** page 1

ideas to be pursued in an institution of higher learning.

"The vast extent of permitted expression also underscores the high potential for intrusion on the objecting students' First Amendment rights, for it is all but inevitable that the fees will subsidize speech that some students find objectionable or offensive. It is all but inevitable that the fees will result in subsidies to speech which some students find objectionable and offensive to their personal beliefs.

"If the standard of germane speech is inapplicable, then, it might be argued the remedy is to allow each student to list those causes which he or she will or will not support. If a university decided that its students' First Amendment interests were better protected by some type of optional or refund system it would be free to do so," the decision read.

Kennedy wrote that the University must allocate funds without regard to the viewpoints of student organizations.

"[The University] must provide some protection to its students' First Amendment interests, however. The proper measure, and the principal standard of protection for objecting students, is the requirement of viewpoint neutrality in the allocation of funding support.

"When a university requires its students to pay fees to support the extracurricular speech of other students, all in the interest of open

discussion, it may not prefer some viewpoints to others," Kennedy stated.

The Court was cautious to state that attempts of students to vote

defunding by majority vote of the student body. To the extent the referendum substitutes majority determinations for viewpoint neutrality it would undermine the constitutional protection the program requires," Kennedy continued.

The American Civil Liberties Union filed an amicus ("friend" of the court) brief, citing *United States v. Associated Press*, in which it stated that, "The classroom is peculiarly the 'marketplace of ideas.' The Nation's future depends upon leaders trained through wide exposure to that robust exchange of ideas which discovers truth 'out of a multitude of tongues, [rather] than through any kind of authoritative selection.'"

A brief filed with the U.S. Supreme Court by the University of Wisconsin stated, "Respondents do not, as a matter of constitutional mandate, enjoy the right to avoid paying for the provision of student services and the creation of a forum for robust campus debate and dialogue, any more than they enjoy the right not to pay tuition that results in courses being taught with whose content they disapprove.

"The funding of student services and a forum for the expression of diverse views does not offend the First Amendment. It instead furthers First Amendment values by promoting vigorous debate in an educational setting entirely suited to that discussion," the brief stated.

Next week: *The Beacon* will examine WPU reaction to the U.S. Supreme Court's ruling.

Student organizations the plaintiffs objected to:

Wisconsin Student Public Interest Research Group, or WISPIRG; Lesbian, Gay, Bisexual Campus Center; Campus Women's Center; UW Greens; Madison AIDS Support Network; International Socialist Organization; Ten Percent Society; Progressive Student Network; Amnesty International; United States Student Association; Community Action on Latin America; La Colectiva Cultural de Aztlán; Militant Student Union of the University of Wisconsin; Student Labor Action Coalition; Student Solidarity; Students of National Organization for Women; MAD-PAC; and Madison Treaty Rights Support Group.

Source: website of University of Wisconsin-Madison

for funding or defunding a student organization (allowed by UW's policy) in place of viewpoint neutrality violated constitutional free speech protection.

"While not well developed on the present record, the referendum aspect of the University's program appears to permit RSO funding or

SETON HALL UNIVERSITY

1 8 5 6

EDUCATIONAL PARTNERS IN CATHOLIC SCHOOLS

EPICS

For Beginning Teachers

- ◆ Become part of a two-year volunteer teaching program in Catholic elementary and high schools for new education graduates
- ◆ Achieve a 36-credit Master of Arts in Education in a two-year cohort experience
- ◆ Receive an Americorps Grant valued at \$4,725.00 per year
- ◆ Receive medical insurance
- ◆ Earn monthly salary
- ◆ Enhance your personal and spiritual development
- ◆ Live in community housing

INFORMATION NIGHT

March 29, 2000 at 7:00 PM, Kozlowski Hall ~ 4th floor Atrium

Light Refreshments served

~ OR ~

For additional information, please contact:

College of Education & Human Services

Seton Hall University, South Orange, New Jersey 07079

Phone: (973) 761-9668 Email: hanburke@shu.edu

Nothing's wrong with the Meadowlands: What's really behind a move to Newark?

By Ira P. Thor
Sports Writer

So, it looks like the Devils and Nets will be moving to Newark sometime this decade. A move that has many pros, and even more cons.

THOR'S THOUGHTS



By Ira Thor

I recently took a drive on what's now Route 21 into downtown Newark, past the new Riverfront Stadium which houses the Newark Bears of independent minor league baseball, and was

impressed by what downtown Newark has become since the opening of the NJPAC. I admit, that the visualization that I used to get of "Brick City" when someone uttered the words Newark is starting to subside. And, that's a great thing for a city, which has been sunk in the doldrums for way too long.

But I don't feel the city should become home for the Nets or the Devils.

When the YankeeNets corporation bought the Devils for \$175 million earlier this month, the rumblings of a move became reality. Or did it?

The State of New Jersey, weary to allow its teams (both of whom began their existences in other states), committed \$75 million to a state-of-the-art sports arena in downtown Newark to open in 2004 or 2005. The transfer of ownership will take place after the end of the season.

And Newark is a better solution for the Devils, than what owner Dr. John J. McMullen came up with earlier this season, when he proposed building a stadium on a platform over the New Jersey Transit hub. A great idea if New Jersey actually had mass transportation. But mass transit in this state is a sham. And, quite frankly, do you know anyone who does not drive when they attend a sporting event in this state?

However, a move to Newark won't be cheap. The day I took that drive down Route 21, traffic was a nightmare. And, it wasn't a game day.

With the current road situations, the city of Newark can't handle the traffic that two professional sports franchises would generate. Where will the cars go when they get off the Turnpike? Route 280 is a joke at the junction of the Garden State Parkway. Route 78 isn't much better. So if Newark

would become home to the Devils and Nets, the state would need to build several new roads-and fast.

Although a move to add modern highways would put Newark on the map of reappearing cities, and would give the state's largest city a much-needed make-over, the taxpayers of New Jersey will never approve such a decision, because they're the ones who would foot the highway bill.

Another reason the idea of moving to Newark won't appeal to many fans in the state is because of the city's lousy reputation. The visualization I used to get of Newark may not exist for me, because I am open-minded, and no longer fear the city. But, unfortunately, it comes down to a racial and social-economic issue. Most of the fan base for hockey is suburban, and middle-class or higher. Although many Newark residents would certainly be attracted to Nets games, much of the Nets fan base is also due to middle-class residents, or corporations. To most of these fans, Newark will always be an unsafe, crime-ridden hole.

And keep in mind the long-running issue with Yankee Stadium in the Bronx. Many people don't want to attend games because they feel unsafe walking or driving the city streets after dark. It's the same thing with Newark.

My issue here is there is nothing wrong with the Meadowlands. In my opinion, it's one of the easiest sports complexes to get to in the country, and I've been to many. There are so many highways that are in its vicinity. The Turnpike has an exit that lands you right in front of Giants Stadium. Routes 3, 46, 17, and 120 lead you there, while the Garden State Parkway, Route 80, and many less-traveled county roads such as 503 get the job done. For those of us without cars, the Meadowlands are served well by buses.

The arena is also relatively young. Built in the earlier 1980's, Continental Arena, formerly the Brendan Byrne Arena, offers some of the most comfortable indoor accommodations. Even parking is easy, with overflow lots readily available across Route 120 at Giants Stadium, with a weather-protected walkway connecting fans to the arena.

Quite frankly, this situation comes down to two things-power and money.

Money, because the YankeeNets corporation, which

includes principal Yankees owner George Steinbrenner, can't make as much money from luxury boxes at the "aging" Meadowlands (opened when I was in kindergarten) where there are only several dozens suites, as compared to the newest arenas, where corporations can be accommodated with over one hundred boxes.

Money is a driving force, but after a discussion I had with Paul Dottino, a fellow staff writer at the Bergen Record, and a reporter covering the New York Giants, I think the threat of Newark is ransom.

Listen to this scenario. Steinbrenner has been trying to find a way to get out of the Bronx for years. At one time he said if the Yankees could draw over three million fans, the team would remain in the Bronx.

They did last year, for the first-time ever, en route to a third World Series title in four years. But, in reality, Steinbrenner has just been biding his time as the leverage he would need to move the Yankees to New Jersey was created. Governor Whitman said the state would not pay for a stadium for the Yankees in New Jersey. But, behind the scenes, Steinbrenner, being the crafty businessman he is famous for, knew what was coming. He knew the creation of the YankeeNets company was imminent, and being one its principal players, also knew that the YankeeNets would eventually purchase the Devils, which has happened.

So look what we have here. We have George Steinbrenner as the backbone of a corporation, which owns three major professional sports franchises. And with money already committed to building a new arena, why can't the same funds be shifted for use in construction of a new Yankee stadium baseball park in the Meadowlands. The money that would have been allocated for new roads into Newark can instead be used to give the existing arena a luxury-box facelift. New roads won't be needed, because they already exist. And all that needed to happen for this to occur was the fate of two sports franchises to be held hostage by one of the most powerful men in sports.

The Yankees will be coming to New Jersey, and it looks like we'll all learn what we already knew. George Steinbrenner always gets what he wants.

Ira Thor is a senior at William Paterson University. Readers wishing to correspond with Ira can reach him at irathor@yahoo.com.



William Paterson University CAREER DEVELOPMENT CENTER

JOB FAIR 2000

Thursday April 6th
10:00 - 2:00
Student Center
Ballroom

Employer representatives hiring candidates for FT / PT / Internships / and Summer Opportunities

✓ Dress for Success
✓ Bring Resumes

Sample Employer Listing as of 3/17/00:

A & P
A Professional Edge
Alliance Capital
American Express Financial Advisors
AOE Ricoh
Atlantic Health System
Avis Rent A Car
Bell Atlantic
Bell Atlantic Mobile
Charming Shoppes Inc., dba Fashion Bug
C.H. Robinson Worldwide, Inc.
Certified Financial Services/Guardian
Dial America Marketing
DYFS
Eastern Christian Children's Retreat
Enterprise Rent-A-Car
First Investors Corp.

Friendly's Ice Cream Corp.
Future Financial Planners, Inc.
Horizon Blue Cross Blue Shield
Hudson United Bank
IBM Global Services
Independent Child Study Teams
International Check Services
John Hancock Financial Services
Johnson & Johnson Health Care Syst.
Kids Corporation
Marcus & Millichap Real Estate
MCS Canon
Meldisco - A Footstar Co.
Micro Warehouse, Inc.
Morris County Youth Shelter
MSNBC
Naval Air Warfare Center Aircraft

Normann Personnel Services
Office Mates 5
Our House
Paychex Inc.
Primerica Financial Services
Princeton Blairtown Center
Raymond Alexander Associates
Roadway Express
Ruitenberg Displays
Sears
Sobel & Company
Social Security Administration
Spring Lake Day Camp
Standard Register
State Farm Insurance
Summit Area YMCA
Summit Bank

The ARC of Bergen & Passaic
The Bank of New York
The City of NY Office of Revenue
The Devereux Foundation
The Home Depot
Tiffany & Company
Transamerica Flood Hazard Cert.
UPS
US Army
US Border Patrol
US Dept. Of Housing & Urban Dev.
Valley Health Affiliates
Valley National Bank
Walgreens

Nets award scholarship to William Paterson student

William Paterson University's Veniece Thompson, a native of Camden, New Jersey, was presented with a New Jersey Nets Scholarship on Feb. 2, prior to the Nets home game versus the Atlanta Hawks.



majoring in accounting. In high school, she was a member of the marching band, Future Business Leaders of America, and Students Against Racism. She has also volunteered with the tenant patrol staff in Camden.

Recipients of the Nets Scholarship are chosen on the basis of financial need, academic performance, and community service. The student must have graduated from a New Jersey high school within the past two years and must maintain institutional GPA conditions set by their chosen university or college.

"The Nets organization has always been committed to being a pro-active member of the community..."

-Nets President Michael Rowe

The \$4,000 Nets Scholarship, to be paid over the course of four years, was presented on behalf of the New Jersey Nets Foundation through the team's Community Youth Organization. The CYO awarded \$200,000 in scholarship money last season to deserving students from New Jersey who plan to attend or are currently attending in-state universities as well as two or four-year colleges.

"The Nets organization has always been committed to being a pro-active member of the community and fostering the development of area youth," said Nets President Michael Rowe. "This is the second year of the Nets Scholarship program, and we are pleased to provide a needed financial boost to a diversified number of college-bound students in our community."

Veniece is currently a freshman at William Paterson University,

Qualifying institutions need to match the \$1,000 scholarship amount, provide a mentor for the recipient and involve the Nets in the selection process. The eleven participating institutions are: Bloomfield College, Essex County College, Hudson County Community College, New Jersey City University, New Jersey Institute of Technology, Passaic Community College, Rider University, Rowan University, Rutgers-Camden University, Seton Hall University, and William Paterson University.

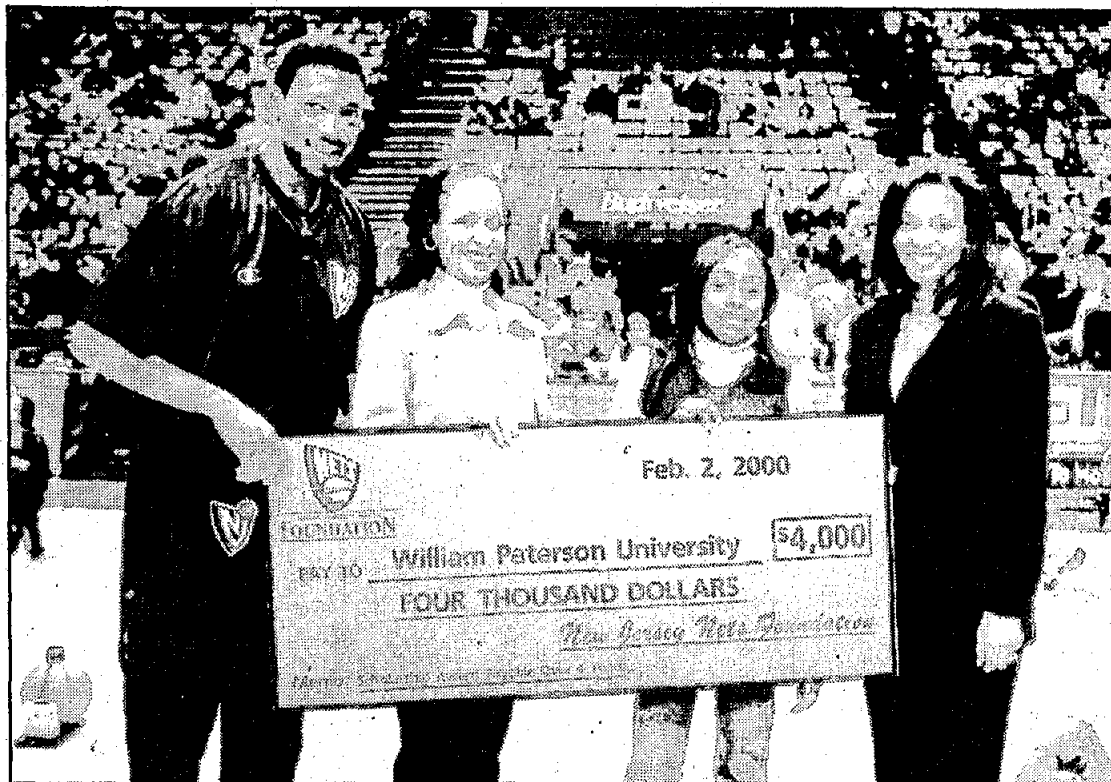
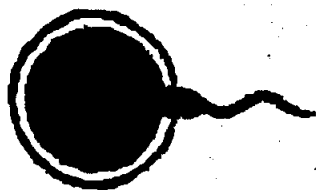


photo courtesy of Joe Martinelli

Nets forward Johnny Newman, Assoc. Dean of Students for Enrollment Management Dr. Rosemary Howell, Veniece Thompson, Director of Community Affairs Gina Cook

Sports Trivia Question:

In what year did O.J. Simpson win the Heisman Trophy? (See answer next week)



EGG DONORS NEEDED

THE NORTH JERSEY CENTER FOR REPRODUCTIVE ENDOCRINOLOGY AND FERTILITY CENTER IS SEEKING EGG DONORS OF ALL ETHNIC BACKGROUNDS, BETWEEN THE AGES OF 21-32

AS AN EGG DONOR YOU CAN MAKE A DIFFERENCE AND GIVE A COUPLE THE MOST PRESCIOUS GIFT, THE CHILD THAT THEY DREAMED OF HAVING

RESIDENTS OF NEW JERSEY ONLY, EACH CANDIDATE NEEDS TO SEND A PICTURE WITH THEIR NAME ON IT, ADDRESS AND DAY TIME PHONE NUMBER

AFTER THE DONOR HAS COMPLETED AN EGG DONOR CYCLE THEY WILL BE COMPENSATED \$5,000

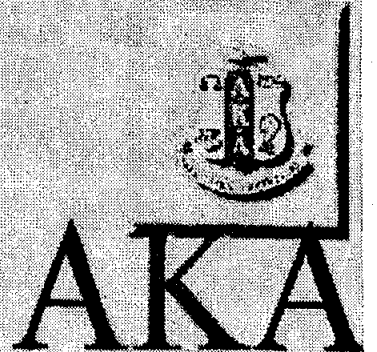
For more information on our egg donor program call (973) 470-0303 and ask for one of our nurses

1035 Route 46 East, Clifton, New Jersey 07013

William Paterson University Presents
2ND ANNUAL STEP SHOW



REACHING BACK



WILLIAM PATERSON

UNIVERSITY

Rec Center

SATURDAY APRIL 8, 2000

DOORS OPEN @ 6PM

WPU /GREEKS \$ 8

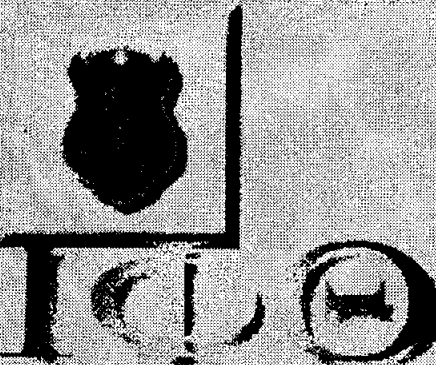
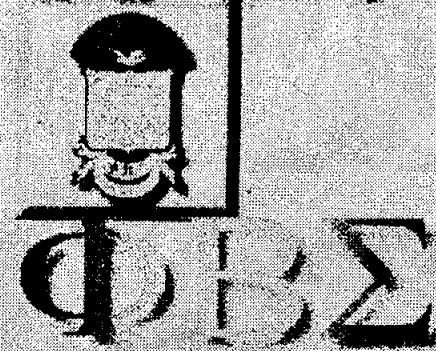
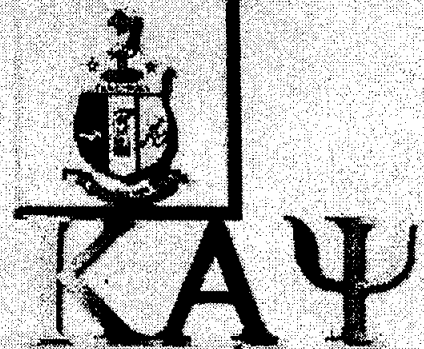
COLLEGE IDS \$ 10

ALL OTHERS \$15

TICKETS PURCHASED ON SITE!

***AFTER PARTY INCLUDED**

FOR MORE INFORMATION CONTACT



STEPPIN' FORWARD

SGA NOMINATIONS NOW BEING ACCEPTED POSITIONS TO BE FILLED:

Executive Positions:

President, SGA
Executive Vice President, SGA
Vice President, SGA
Treasurer, SGA

Class Officers for Sophomore through Senior Classes:

President
Vice President
Secretary
Treasurer

Legislative Positions:

6 Club B Representatives*
2 Club C Representatives*
1 Club D Representative*
1 Club E Representative*

* must be a member of a club in the proper group of clubs to run.

10 College Representatives:

2 Arts and Communication
2 Education
2 Humanities and Social Science
2 Science and Health
2 Business

Board of Trustees

Representative:

1 Two-year termed Representative

Nominations Open 3/27/00, and Close 4/7/00. Meet the Candidates is 4/13/00 in SC Room 324/5. Elections are 4/18/00 and 4/19/00.

YOU MUST ATTEND AN ELECTION WORKSHOP TO RUN!!
For More Information, Contact the SGA Office, or call ext. 2157.

Lady Pioneers finish the season with a record of 20-6

Meg Renna tabbed 1999-2000 NJAC "Player of the Year" and "First Team All-NJAC"

Junior guard Meg Renna, who led the Pioneers and the conference in scoring, was selected both 1999-2000 New Jersey Athletic Conference "Player of the Year" and "First Team All-NJAC."

Renna, who averaged 16.4 points and 4.9 assists per game, sparked the Pioneers to a 20-6 overall record and a 15-3 mark in the league.

Renna, who posted double-figure scoring numbers in 23 of 25 games played, scored a season-high 28 points against Apprentice on Jan. 7. She shot 46.8 percent from the floor, a team-high 78.8 percent from the charity stripe, and dished out the ball a team-high 122 times.

Renna finished the season with 1,051 career points scored, and broke the 20 points a game mark six times on the year.

Senior forward Wendy Kane concluded her collegiate career in fine style collecting 1,089 points scored and 1,020 rebounds.

Kane is one on just three women's basketball players who have finished their Pioneer careers with over 1,000 rebounds and 1,000 points scored. She averaged 9.6 points and 6.5 rebounds a game, and was selected "Second Team All-NJAC."

Dana Feltz provided the team with leadership and strong court savvy, which earned her "First Team All-NJAC" honors.

Feltz, who was second on the team in scoring with 320 points for an average of 12.3 points per game, notched nine double-double performances in the year. One of her most impressive games was a 20-point, 12-rebound showing against

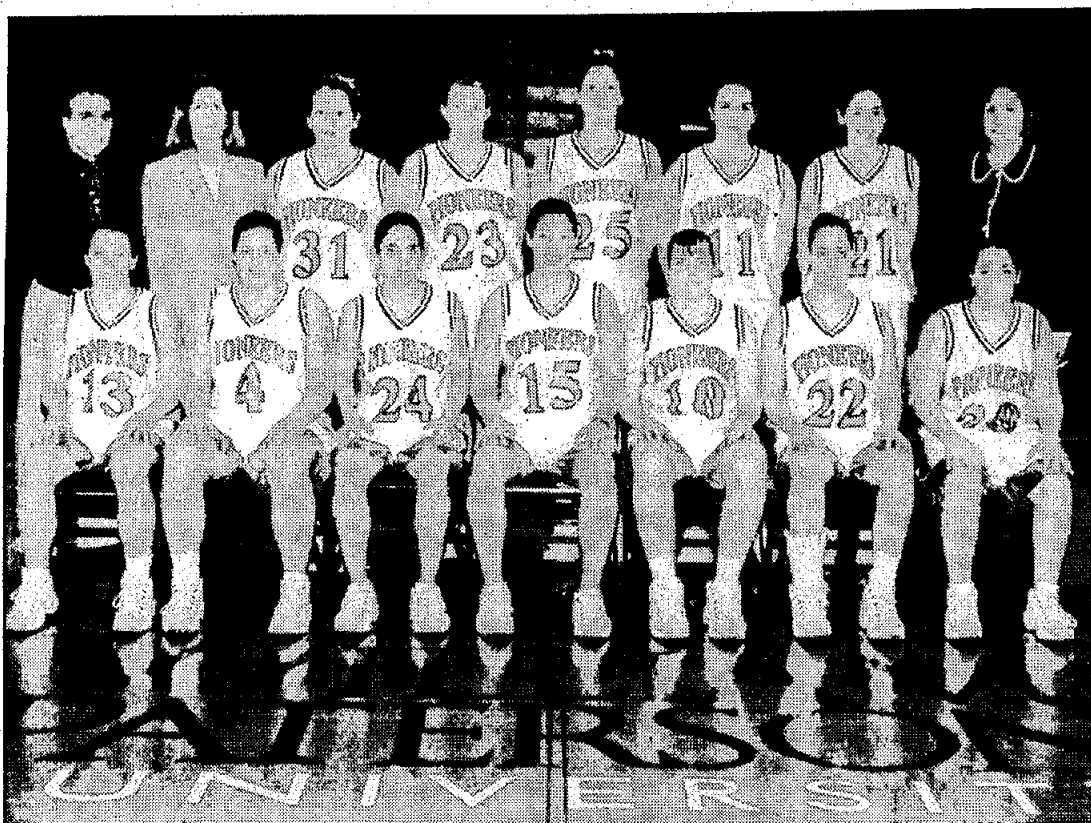


photo courtesy of Joe Martinelli

Back Row (left to right): Assistant Coach Keith Woods, Assistant Coach Mary Dean, Kelly Corey, Melissa Jacobson, Shannon Benson, Dana Feltz, Jeanine Day, Head Coach Erin Monahan
Front Row (left to right): Katie Morris, Melissa Donovan, Meg Renna, Wendy Kane, Erin Fahy, Carolyn Saladis, Jennifer Pulusio

the College of New Jersey on Feb. 5.

Feltz also tallied 21 double-figure scoring games, including a season high 21-point contest against Ramapo on Feb. 12. A true Pioneer, Feltz finished her collegiate career with 1,036 points scored and 728 rebounds.

One of the top freshman per-

formers on the team this spring was guard Katie Morris. Morris saw action in 26 games (16 of

which were starts) and chipped in 7.6 points and 2.5 rebounds per game.

Morris poured in a season-high 19 points against Pitt-Greensburg on Nov. 21. A strong defender, Morris was tied with Renna for the team lead in steals with 78.

Sophomore forward Melissa Donovan was third on the team in scoring with 264 points, for an average of 10.6 points a game. She scored a game-high 22 points against Kean University on Jan. 26. Donovan contributed 3.9 rebounds a game, and shot 40.3 percent from the floor.

Freshman forward Jeanine Day appeared in 25 games, 13 of which were starts, and averaged 4.8 rebounds and 2.1 points a game. Day tallied a team-high 15 blocks, and collected 31 steals.

Senior guard Carolyn Saladis chipped in 2.4 points and 2.0 rebounds a game, while providing veteran leadership.

Junior guard Erin Fahy averaged 2.3 points a game, while freshman forward Kelly Corey tallied 3 points and 2.5 rebounds a game.

Head Coach Erin Monahan finished her eighth season at the helm of the program with a 167-51 mark for a .766 winning percentage.

This year marks the eighth season in a row that the Pioneers have surpassed the 15-win mark, and fifth time in the last seven years that the team has won 20 or more games.

Courtesy of Joe Martinelli, WPU Sports Information Director

ATTENTION STUDENTS — Claim Your Share of the e-Business Boom—

NEW INTERNET PROGRAM!

Become a
Certified
e-Business
Programmer

at **PC AGE**

\$370 billion
(62%)

per year by 2003
for consultants and
tech people*

"Companies around the globe will spend \$600 billion a year by 2003 on e-business according to market researcher International Data Corp. ... 62% of that amount will go to consultants and the like who can sort out how to use all the bedeviling technology."

— Business Week 12/13/99

Now just one breakthrough e-business program certifies you as a Sun Certified Programmer (Java 2) and Microsoft Certified Professional + Site Building (MCP+SB) at PC AGE. Companies are paying top dollar for network and Internet programmers. Claim your share now by calling PC AGE at — **888-PCAGE-60** (888-722-4360) *IDC

Microsoft
Solution Provider

www.pcage.com
since 1991

PC AGE
Certified IT Career Institute
EMPLOYED • EMPLOYING

Take our Computer Aptitude Test at No Charge!

EARN FAST CASH NOW

\$10/hr guarantee for first 4 weeks, after that, average rep earnings \$12-15/hr

Immediate openings for reliable people who want a job that:



- is walking distance from WPUNJ
- has flexible PM and weekend hours
- gives you a weekly paycheck
- gives you bonuses



CALL TODAY!
Tell a friend, find out about lucrative
referral bonuses (973) 595-6800

EASY PHONE WORK

Pioneers fall out of 'Sweet 16': finish season 23-5

Horace Jenkins named 1999-2000 NJAC "Player of the Year"



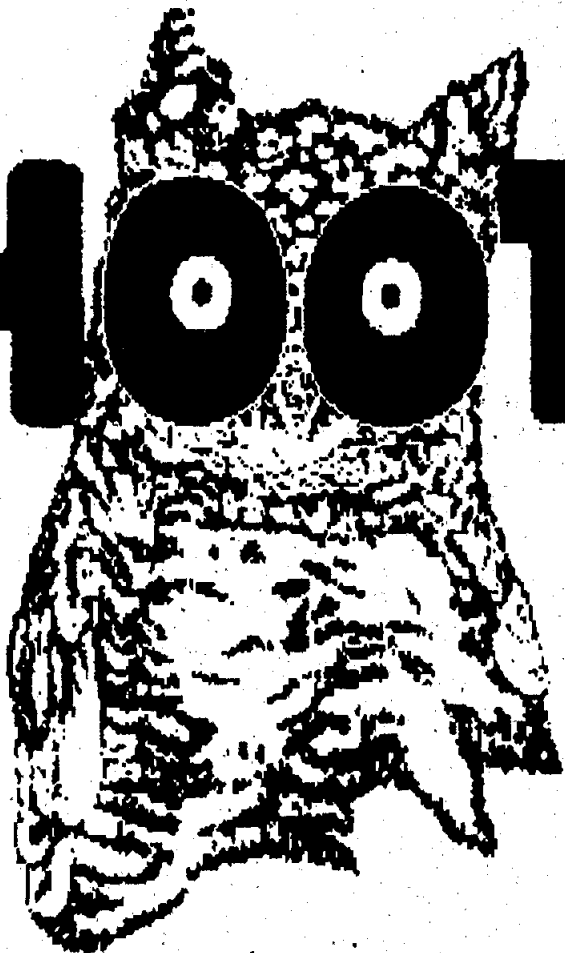
photo courtesy of Joe Martinelli

Back Row (left to right): Ray Ortiz, Keyth Hardy, Chris Lauer, Dag Christensen, Mufeed Thomas, Mike Schirick Front Row (left to right): Jeff Moglia, Gregg Anacker, Steve Smith, Horace Jenkins, Mike Everett, Danny Jennings



Horace Jenkins holds the 2000 NJAC Championship plaque as the Pioneers celebrate a glorifying victory over Richard Stockton. The Pioneers advanced to the NCAA 'Sweet Sixteen' but suffered a 57-52 loss at the hands of Catholic.

CALLING ALL HOOTERS GIRLS!



If you are the
"All American
Cheerleader"
or the
"Girl Next Door"
We are looking for you!

Earn
Great
Money
While
Having
Fun!

OPENING
IN EARLY
APRIL

Interviewing Mon. - Sat., 9am-7pm
25 Route 23 South (Near Willowbrook Mall, Wayne, NJ)
(973) 837-1876 or (201) 342-5877 x109

Summer I

May 15-June 21, 2000

ARTS & COMMUNICATION

Undergraduate
 ARTH101 APPROACHES TO NON-WEST ART
 ARTH102 APPROACHES TO NON-WEST ART
 ARTH331 ART IN NEW YORK
 ARTS215 WOOD MATERIALS & DESIGN
 ARTS220 PAINTING & COLOR THEORY
 ARTS240 CERAMICS
 ARTS260 TEXTILES & DESIGN
 ARTS270 PHOTOGRAPHY
 ARTS310 ADVANCED SCULPTURE
 ARTS315 WOOD MATERIALS & EXP DSN
 ARTS323 CHINESE INK PAINTING
 ARTS398 INTERNSHIP
 ARTS399 EXPLORATORY DRAWING*
 ARTS399* PENCIL REALISM WORKSHOP
 ARTS415 FURNITURE DESIGN STUDIO
 ARTS423 ADVANCED CHINESE INK PAINTING
 ARTS451 VISUAL COMMUNICATION LAB
 COMM101 INTRO TO THEATER
 COMM110 COMMUNICATION IN ACTION
 COMM115 THEATER PRODUCTION LAB
 COMM120 MASS COMMUNICATION
 COMM121 INTRO COMMUNICATION THEORY
 COMM210 MEDIA WRITING
 COMM220 RADIO & TV
 COMM222 PRESS IN A FREE SOCIETY
 COMM225 AUDIO PRODUCTION
 COMM226 EFP & VIDEO EDITING
 COMM234 FILM AS A MEDIUM
 COMM244 COMM. RESEARCH FOUNDATIONS
 COMM260 ORAL INTERPRETATION
 COMM280 THEATER WORKSHOP I
 COMM290 THEATER WORKSHOP II
 COMM330 TV INTERNSHIP
 COMM363 PUBLIC SPEAKING
 COMM399 HONG KONG/TAIWAN STUDY TOUR*
 COMM425 TV WORKSHOP-GAMBIA
 COMM463 GROUP DISCUSSION
 MUS 120 MUSIC APPRECIATION
 MUS 158 MUS TECH I
 MUS 276 COMP WORKSHOP I
 MUS 277 COMP WORKSHOP II
 MUS 278 COMP WORKSHOP III
 MUS 303 MUS MGMT INTERNSHIP
 MUS 317 HIST AMER POP MUS (1950)
Graduate
 ARTS523 CHINESE INK PAINTING
 ARTS530 COMPUTER ART & DESIGN
 COAR599 SEMINAR IN RESEARCH ANALYSIS*
 MUS 538 MUSIC TECHNOLOGY

BUSINESS

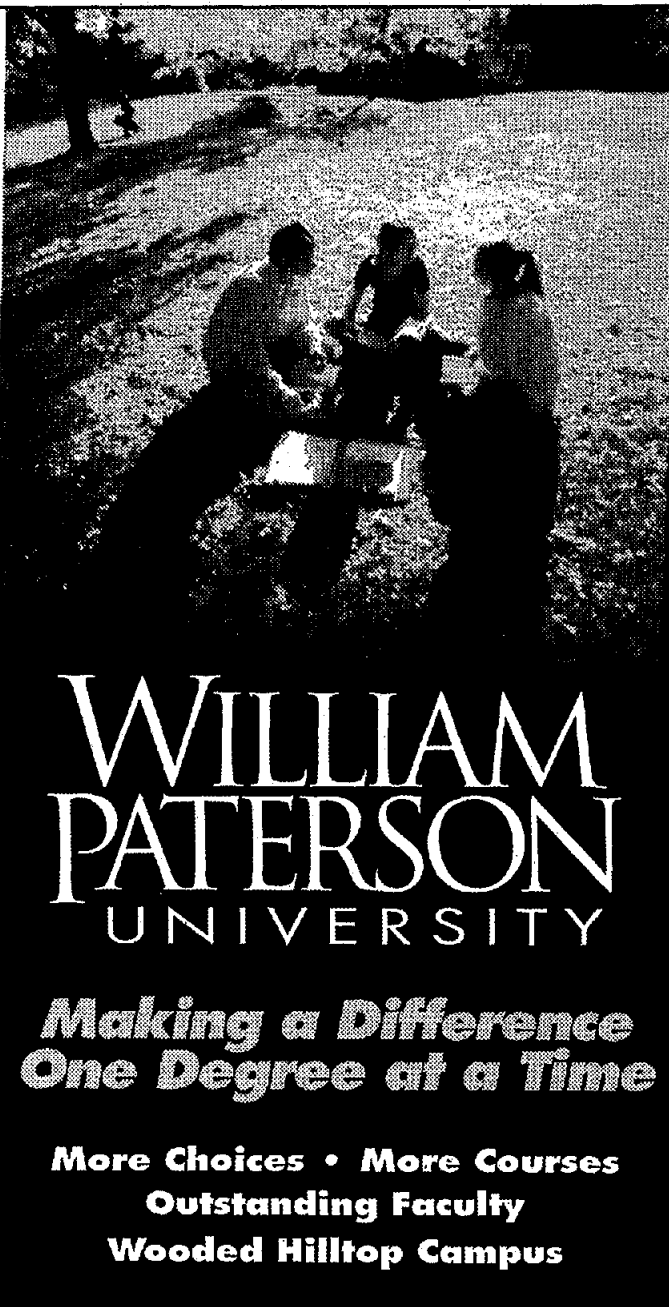
Undergraduate
 ACCT211 FINANCIAL ACCOUNTING
 ACCT212 MANAGERIAL ACCOUNTING
 ACCT410 TAXATION I
 ACCT490 INTERNSHIP IN ACCOUNTING
 ECON201 MACROECONOMIC PRINCIPLES
 ECON202 MICROECONOMIC PRINCIPLES
 ECON210 ECONOMIC STATISTICS I
 ECON310 MONEY & BANKING
 FIN 310 MONEY & BANKING
 FIN 320 CORPORATE FINANCE
 FIN 400 INTERN'L FINANCIAL MGMT
 FIN 435 PRINCIPLES OF INVESTMENT
 FIN 490 INTERNSHIP IN FINANCE
 LAW 201 LEGAL ENVIRONMENT BUSINESS
 MGT 202 INTRODUCTION TO BUSINESS
 MGT 300 PRINCIPLES MANAGEMENT
 MGT 305 MGMT INFORMATION SYSTEMS
 MGT 306 ORGANIZATIONAL BEHAVIOR
 MGT 309 INTERNATIONAL MGMT
 MGT 431 PRODUCT/OPERATION MGMT
 MGT 460 BUS STRATEGY/POLICY
 MGT 480 SEMINAR MANAGEMENT
 MGT 490 INTERNSHIP IN MANAGEMENT
 MKT 310 MARKETING
 MKT 316 MULTINATIONAL MARKETING
 MKT 475 TRANSPORT/BUS LOGISTICS
 MKT 490 INTERNSHIP IN MARKETING
Graduate
 BSC0601 FINANCIAL ACCOUNTING
 BSC0604 MGT PROCESS/ORG THEORY
 BSC0608 MARKETING MANAGEMENT
 BSC0613 PRODUCTIONS OPERATIONS MGT
 MBAE776 BUSINESS GOVMT SOCIETY
 MGT 704 HUMAN RESOURCE MGMT
 MKT 785 INDUSTRIAL MARKETING

EDUCATION

Undergraduate
 BRI 109 COLLEGE RDG/RATE IMPROV
 CIE0203 TEACHING AS PROFESSION
 CIE0413 TECHNOLOGY ACROSS CURRIC
 CIRL229 LITERACY & LEARNING
 CIRL330 RDG STRAT CONTENT AREAS
 CIE0415 TECH IN CLASSROOM
 SPED307 ASSESSMENT CHILD WITH DISAB
 SPED320 PRACTICUM II IN SPECIAL ED
Graduate
 CIE0511 ED AND PSY THRY APPLI
 CIE0605 TECHNOLOGY IN EDUCATION
 CIRL626 LIT FOR ADOLESCENTS
 CIE0644 MODERN EDUCATIONAL PRACTICES
 CMAT677 INSTR THRY/PRCT MATH
 CMAT678 INSTR THRY/PRCT SCI & HLTH
 CMAT680 SCHOOL AND SOCIETY
 CSP 621 CASE STUDIES IN COUNS
 SPED542 FNDATNS LEARNING DISAB

HUMANITIES AND SOCIAL SCIENCES

Undergraduate
 AAC150 RACISM AND SEXISM IN US
 AAC155 JUSTICE AND RACISM
 AAC211 BLUES TO RAP
 AAC215 AFRICAN HISTORY I
 AAC261 AFR-AM CARB RELIGION
 AAC311 AFRICAN LITERATURE
 AAC322 CARIB LITERARY EXPR I
 ANTH130 INTRO TO ANTHROPOLOGY
 ANTH354 FORENSIC OSTEOLOGY
 ANTH408 INDIANS OF NORTH AMERICA
 ENG 108 BASIC WRITING
 ENG 110 WRITING EFFECTIVE PROSE
 ENG 150 INTRO TO LITERATURE
 ENG 303 AMERICAN LITERATURE TO 1865
 ENG 305 LT WEST EUROPE TO RENAISSANCE
 ENG 313 DRYDEN/POPE/SWIFT
 ENG 323 20TH CENT EUROPEAN FICTION
 ENG 331 CREATIVE WRITING
 ENG 350 ETHNIC AMERICAN LITERATURE
 FR 110 BASIC FRENCH I
 FR 111 BASIC FRENCH II
 HIST101 FOUND OF WESTERN CIV
 HIST102 THE WEST AND THE WORLD
 HIST205 US: THROUGH RECONSTRUCTION
 HIST260 HISTORICAL METHODS
 HIST350 AMERICAN SLAVERY
 HIST480 SEMINAR: HISTORY/MODERN GERMANY



WILLIAM PATERSON UNIVERSITY

Making a Difference One Degree at a Time

More Choices • More Courses
Outstanding Faculty
Wooded Hilltop Campus

SUMMER 2000

IT 110 BASIC ITALIAN I
 PHIL110 INTRO TO PHILOSOPHY
 PHIL227 EASTERN PHIL/RELIGION
 POL 110 INTRO TO POLITICS
 POL 120 AMERICAN GOVERNMENT
 POL 399 ELECTIONS AND CAMPAIGNS*
 PSY 110 GENERAL PSYCHOLOGY
 PSY 202 EXPERIMENTAL LAPP STAT
 PSY 210 DEVELOPMENTAL PSYCH
 PSY 250 PSYCH CONSCIOUSNESS
 PSY 260 PSYCH BUS/INDUSTRY
 PSY 320 PSY OF ADOLESCENCE
 PSY 322 GROUP DYNAMICS
 PSY 330 ADULT DEVELOPMENT/AGING
 PSY 351 THEORY PERSONALITY
 PSY 353 ABNORMAL PSYCHOLOGY
 PSY 382 PHYSIOLOGICAL PSYCHOLOGY
 PSY 382 OPERANT MODE BEHAVIOR
 PSY 410 INTRO COUNSELING/PSYCH
 PSY 480 SEMINAR IN PSYCH
 SOC 101 PRINCIPLES OF SOCIOLOGY
 SOC 102 SOCIAL PROBLEMS
 SOC 124 SOC RESEARCH METHODS I
 SOC 218 HISTORY OF SOCIAL THEORY
 SOC 231 SOCIOLOGY OF THE FAMILY
 SOC 271 SEXUALITY IN MODERN LIFE
 SOC 354 SOCIAL STRATIFICATION
 SOC 365 SOCIAL DEVIANCY
 SOC 367 JUVENILE DELINQUENCY
 SOC 399 ST: SOCIOLOGY OF WOMEN
 SOC 482 SENIOR SEM IN CRIM JUSTICE
 SOC 485 SENIOR SEMINAR IN SOCIOLOGY
 SPAN100 INT BASIC SPAN I & II
 SPAN110 BASIC SPANISH I
 SPAN210 INTERMEDIATE SPANISH I
 SPAN488 SEMINAR IN LATIN AMERICAN CINEMA

WS 110 WOMEN'S CHANGING ROLES
 WS 150 RACISM/SEXISM IN THE US
 WS 399 LIFE PASSAGES/FEMALE EXPR*
Graduate
 ENG 640 SHAKESPEARE TRAGEDY/ROM
 PSY 618 PSYCHOTHERAPY THEORIES
 PSY 630 INTELLECTUAL TESTING
 PSY 691 CLINICAL PRACTICUM II
 SOC 550 CONTEMP ISSUES IN LIFE COURSE
 SOC 567 COMM SUPVR OF OFFENDERS
 TIED542 SOC PSY PROC MULTICULT EX

SCIENCE AND HEALTH

Undergraduate
 BIO 112 GENERAL A & P I
 BIO 114 APPLIED A & P
 BIO 118 BASIC ANATOMY AND PHYSIOLOGY I
 BIO 120 HUMAN BIOLOGY
 BIO 130 FIELD BIOLOGY
 BIO 163 GENERAL BIOLOGY I
 BIO 170 BASIC MICROBIOLOGY
 CHEM031 COLLEGE CHEMISTRY: LAB
 CHEM051 ORGANIC CHEMISTRY I: LAB
 CHEM060 GEN CHEM I LAB
 CHEM131 COLLEGE CHEMISTRY: LEC
 CHEM160 GEN CHEM I LEC
 CHEM251 ORGANIC CHEMISTRY I LEC
 CMHL120 CURRENT HEALTH ISSUES
 CMHL210 WOMEN'S HEALTH
 CMHL452 METH, CURR & THEO IN SC HLTH ED
 CMHL490 HUMAN SEXUALITY
 CMHL491 DRUGS AND HEALTH
 COD6261 SPEECH DISORDERS
 CS 130 INTRO COMPUTER BASIC
 CS 201 COMP LIT MICROCOMP APPL
 CS 230 COMPUTER SCIENCE I
 CS 240 COMPUTER SCIENCE II

ENV 115 GENERAL GEOLOGY
 ENV 315 INTRO OCEANOGRAPHY
 GEO 150 WORLD REGIONAL GEOGRAPHY
 GEO 334 GEOGRAPHY OF AFRICA
 GEO 335 GEOGRAPHY OF LATIN AMER
 MATH106 BASIC MATHEMATICS WITH ALGEBRA
 MATH110 CONTEMPORARY MATH
 MATH111 ELEM ALGEBRA WITH APPLICATIONS
 MATH115 COLLEGE ALGEBRA
 MATH116 PRECALCULUS
 MATH120 FINITE MATH
 MATH130 ELEMENTARY STATISTICS
 MATH160 CALCULUS I
 MATH161 CALCULUS II
 PEAC251 FIRST AID & SAFETY
 PEAC252 CARDIO-PULMONARY RESUS
 PEAC255 SPECIAL PHYSICAL EDUCTN
 PEAC354 TESTS & MEASUREMENT
 PEAC450 PSY-SOC DIMENSIONS SPORT
 PEAK163 TRACK & FIELD
 PEAK261 FIELD HOCKEY
 PEAK267 SWIMMING
 PEEL203 GOLF
 PEEL204 TENNIS I
 PEEL223 AEROBICS
 PEEL490 INTERN IN EXERCISE PHYS
 PEEL510 FITNESS FOR LIFE
 PETC311 MOVEMENT EDUCATION
 PETC330 CONTEMP METH,MAT&EVAL-DRIV ED
 PETC361 SEL ACT PG PROGRAMS
 PHYS110 INTRO TO PHYSICS
Graduate
 BIO 710 SEMINAR MOLECULAR BIO
 COD609 GRAD CLINICAL PRACTICUM
 NUR 502 HEALTH CARE INFORMATICS LAB
 NUR 604 ADVANCED NURS PRACTICUM I
 NUR 606 TEACHING STRATEGIES
 NUR 700 ADVANCED NURS ROLE PRACT
 NUR 703 THESIS SEMINAR

Summer II

July 3-August 9, 2000

ARTS & COMMUNICATION

Undergraduate
 ARTS285 3 D COMPUTER GRAPHICS
 ARTS385 ADV 3D COMPUTER GRAPHICS
 ARTS395 INTERNSHIP
 ARTS399 MAKING ARTIST BOOKS*
 COMM101 INTRO TO THEATER
 COMM110 COMMUNICATION IN ACTION
 COMM115 THEATER PRODUCTION LAB
 COMM210 MEDIA WRITING
 COMM222 PRESS IN A FREE SOCIETY
 COMM244 COMM. RESEARCH FOUNDATIONS
 COMM280 THEATER WORKSHOP I
 COMM290 THEATER WORKSHOP II
 COMM463 PUBLIC SPEAKING
 MUS 144 MUSIC FUNDAMENTALS
 MUS 161 FRESHMAN COMP MUSIC II
 MUS 200 CONCERT CHOIR
 MUS 211 CONCERT BAND
 MUS 222 JAZZ ENSEMBLE
 MUS 303 MUS MGMT INTERNSHIP
Graduate
 ARTS599 MAKING ARTIST BOOKS*
 COAR599 DOCUMENTARY FILM*
 MUS 500 CONCERT CHOIR
 MUS 508 ADVANCED CHORAL TECHNIQUE
 MUS 525 FOUNDATIONS/MUSIC EDUCATION
 MUS 554 APPLIED INSTRUCTION/VOICE I
 MUS 555 APPLIED INSTRUCTION/VOICE II
 MUS 560 ANALYTICAL TECHNIQUES
 MUS 572 CHAMBER JAZZ ENSEMBLE I
 MUS 599 ORFF SCHULWERK-LEVEL I
 MUS 654 APPLIED INSTRUCTION/VOICE III
 MUS 655 APPLIED INSTRUCTION/VOICE IV

BUSINESS

Undergraduate
 ACCT211 FINANCIAL ACCOUNTING
 ACCT212 MANAGERIAL ACCOUNTING
 ACCT410 TAXATION I
 ECON201 MACROECONOMIC PRINCIPLES
 ECON202 MICROECONOMIC PRINCIPLES
 ECON211 ECONOMIC STATISTICS II
 FIN 320 CORPORATE FINANCE
 FIN 430 ADV MGR FIN
 FIN 490 INTERNSHIP IN FINANCE
 LAW 201 LEGAL ENVIRONMENT BUSINESS
 LAW 251 BUS LAW I/CONTRACTS
 MGT 202 INTRODUCTION TO BUSINESS
 MGT 300 PRINCIPLES MANAGEMENT
 MGT 305 MGMT INFORMATION SYSTEMS
 MGT 309 INTERNATIONAL MGMT
 MGT 315 HUMAN RESOURCE PLAN/DEV
 MGT 431 PRODUCT/OPERATION MGMT
 MGT 460 BUS STRATEGY/POLICY
 MKT 310 MARKETING
 MKT 314 ADVERTISING
 MKT 430 PRODC PLANING/MGMT
 MKT 490 INTERNSHIP IN MARKETING
Graduate
 BSC0606 MANAGERIAL ACCOUNTING
 BSC0612 MGMT INFORMATION SYSTEMS
 MGT 706 SEMINAR IN MANAGEMENT

EDUCATION

Undergraduate
 BRI 109 COLLEGE RDG/RATE IMPROV
 CIE0325 ARTS&CREATIVITY-EDUC
 CIRL229 LITERACY & LEARNING
 CIE0310 EDUCATIONAL PSYCHOLOGY
Graduate
 CIE0618 LANG DEV&EMERGENT LITRCY
 CIE0512 RDG LANG ARTS AND LITER
 CIE0515 INTG ARTS INTRO THE CURR
 CIE0605 TECHNOLOGY IN EDUCATION
 CIE0619 APPLIED DEVELOPMENTAL PSYCH
 CIE0622 PROB SOLV&PROV POSING SEM
 CIRL604 RECENT TRENDS CHILD LIT
 CIE0510 APPL OF PSYCH FOR PROS TEACHERS
 CMAT619 INST THRY/PRCT/FINE ARTS
 SPED519 NAT/NEEDS EXCEPTNL CHILD
 SPED520 TEACH READING & LA-SPED
 SPED536 GUID/COMM PRGMS-DISABLED
 SPED654 DEMO TCHNG DEV DISABLED
 SPED657 SEM CLINICAL APPLIC LD
 SPED658 DEVEL STRAT LEARN DISABL

HUMANITIES AND SOCIAL SCIENCES

Undergraduate
 AAC150 RACISM AND SEXISM IN US
 AAC155 JUSTICE AND RACISM
 AAC211 AFRICAN-AMERICAN MUSIC
 AAC216 AFRICAN HISTORY II
 AAC262 CARIBBEAN WOMEN
 AAC298 STUDENT COMMUNITY SERVICE
 AAC303 AFRICAN FAMILY LIFE
 ANTH130 INTRO TO ANTHROPOLOGY
 ANTH200 HUMAN VARIATION
 ANTH260 MYTH/FOLKLORE-MOD WORLD
 ANTH356 URBAN ANTHROPOLOGY

ANTH408 INDIANS OF NORTH AMERICA
 ANTH450 SHAMANS/WITCHES/MAGIC
 ENG 108 BASIC WRITING
 ENG 110 WRITING EFFECTIVE PROSE
 ENG 150 INTRO TO LITERATURE
 ENG 302 ENG LIT ROMANTIC-MODERN
 ENG 331 CREATIVE WRITING
 FR 110 BASIC FRENCH I
 FR 111 BASIC FRENCH II
 GER 111 BASIC GERMAN II
 HIST101 FOUND OF WESTERN CIV
 HIST102 THE WEST AND THE WORLD
 HIST205 US: SINCE RECONSTRUCTION
 HIST340 GERMANY:BISMARCK-HITLER
 HIST480 SEM: GERMANY LUTHER-BISMARCK
 HUMH498 HUM HON RESRCH/IND STUDY
 IT 110 BASIC ITALIAN I
 IT 111 BASIC ITALIAN II
 PHIL110 INTRO TO PHILOSOPHY
 PHIL200 ETHICS
 PHIL210 LOGIC
 PHIL227 EASTERN PHIL/RELIGION
 POL 110 INTRO TO POLITICS
 POL 230 COMPARATIVE POLITICS
 POL 399 COMPARATIVE SOCIAL POLICY*
 PSY 110 GENERAL PSYCHOLOGY
 PSY 203 EXPERIMENTAL LAB
 PSY 210 DEVELOPMENTAL PSYCH
 PSY 220 SOCIAL PSYCHOLOGY
 PSY 230 HISTORY/SYSTEMS PSYCH
 PSY 260 PSYCH BUS/INDUSTRY
 PSY 322 GROUP DYNAMICS
 PSY 325 PSYCH OF FAMILY
 PSY 350 THEORY PERSONALITY
 PSY 480 SEMINAR IN PSYCH
 SOC 101 PRINCIPLES OF SOCIOLOGY
 SOC 211 ELEMENTARY SOCIAL STATISTICS
 SOC 215 SOC RESEARCH METHOD II
 SOC 231 SOCIOLOGY OF THE FAMILY
 SOC 261 MUSLIM & ISLAMIC US INST
 SOC 262 ESSENTIALS OF CRIMINAL JUSTICE
 SOC 337 SOCIOLOGY OF EDUCATION
 SOC 343 ETHNIC & CONFLICT RESOLUTION
 SOC 351 SOCIOLOGY OF SOCIALIZATION
 SOC 373 SOCIOLOGY OF SOCIAL MOVEMENTS
 SOC 374 SOCIOLOGY OF WAR
 SOC 399 DRUGS & CRIME*
 SPAN106 INT BASIC SPAN I & II
 SPAN110 BASIC SPANISH I
 SPAN111 BASIC SPANISH II
 SPAN210 INTERMEDIATE SPANISH I
 SPAN211 INTERMEDIATE SPANISH II
 SPAN371 CINEMA OF SPAIN: NATION, EXILE
 WS 110 WOMEN'S CHANGING ROLES
 WS 150 RACISM/SEXISM IN THE US
 WS 310 CONTEMP FEMINIST ISSUES
Graduate
 ENG 599 SHORT STORY/SUM WRITING/INST*
 ENG 619 WRITING MAGAZINE MARKET
 HIST599 ST: FDR'S LEGACY: 1929-1945
 PSY 651 PSYCH. ASSESSMENT/TEST II
 PSY 692 CLINICAL PRACTICUM III
 SOC 510 SOCIOLOGY OF CITIES
 SOC 562 SOCIOLOGY OF LAW
 SOC 698 RESEARCH & THESIS

SCIENCE AND HEALTH

Undergraduate
 BIO 113 GENERAL A & P II
 BIO 114 APPLIED A & P
 BIO 120 HUMAN BIOLOGY
 BIO 130 FIELD BIOLOGY
 BIO 164 GENERAL BIOLOGY II
 BIO 335 FIELD BOTANY
 BIO 399 SELECTED TOPICS
 CHEM032 ORGANIC BIOCHEMISTRY:LAB
 CHEM052 ORGANIC CHEMISTRY II LAB
 CHEM051 GEN CHEM I LAB
 CHEM120 CHEM IN PERSPECTIVE
 CHEM132 ORGANIC BIOCHEMISTRY:LEC
 CHEM161 GEN CHEM II LECT
 CHEM252 ORGANIC CHEMISTRY II LEC
 CMHL120 CURRENT HEALTH ISSUES
 CMHL490 HUMAN SEXUALITY
 CS 201 COMP LIT MICROCOMP APPL
 CS 230 COMPUTER SCIENCE I
 CS 240 COMPUTER SCIENCE II
 GEO 150 WORLD REGIONAL GEOGRAPHY
 GEO 320 CULTURAL GEOGRAPHY
 MATH106 BASIC MATHEMATICS WITH ALGEBRA
 MATH110 CONTEMPORARY MATH
 MATH111 ELEM ALGEBRA WITH APPLICATIONS
 MATH115 COLLEGE ALGEBRA
 MATH120 FINITE MATH
 MATH130 ELEMENTARY STATISTICS
 MATH160 CALCULUS I
 MATH161 CALCULUS II
 PEAC250 KINESIOLOGY
 PEAC251 FIRST AID & SAFETY
 PEAC252 CARDIO-PULMONARY RESUS
 PEAC353 PSYCH OF MOTOR LEARNING
 PEAK168 RACQUETBALL
 PEAC204 ELEMENTARY SWIMMING
 PEEL203 GOLF
 PEEL204 TENNIS I
 PEEL209 KARATE I
 PEEL490 INTERN IN EXERCISE PHYS
 PEEL510 FITNESS FOR LIFE
 PHYS110 INTRO TO PHYSICS
Graduate
 COD609 GRAD CLINICAL PRACTICUM

*Selected Topics

CEDL

AND DISTANCE LEARNING

The Center for Continuing Education and Distance Learning also provides a wide array of offerings including computer workshops, noncredit courses, online courses and international travel. For more complete information on the many offerings available, contact the Center for Continuing Education and Distance Learning.

973.720.2436

Fax: 973.720.2298

E-mail: wrighte@wpunj.edu

Web: www.wpunj.edu/cedl



WILLIAM PATERSON UNIVERSITY
 300 POMPTON ROAD • WAYNE, NEW JERSEY 07470

To begin your application/registration process, you must first call the Office of Admissions, toll free

1.877.WPU.EXCEL

2000 registration dates for visiting students are:

Summer I: April 3-24 and May 2-15 • Summer II: April 3-24 and May 2-15

Please submit application as soon as possible to ensure seat availability. Residence halls are available for summer students. All tuition, fees, course offerings and times are subject to change. Look for more information on the Internet:

www.wpunj.edu

BEACON CLASSIFIEDS

OUR RATES	HOW TO PAY	DEADLINES	SEND ADS TO:	ATTN: Classifieds
To run 20 words for one issue is \$6.50. 21-35 words \$7.50, each additional 10 words \$1.00	All classified ads must be paid in advance, unless you have an account with the paper.	Classified ads must be placed by 12:00 P.M., Friday before publication.	The Beacon 300 Pompton Rd. SC310 Wayne, NJ 07470	checks or money orders payable to: THE BEACON

Employment



Customer Service Work around your classes!!!! We have flexible schedules for days, evenings and weekends. The ideal candidate will be energetic and detail oriented with a pleasant phone personality. At ECI you will enjoy vacation pay, 401k plan, pleasant working conditions and a casual dress code (jeans ok). Call (973)890-8210 ECI Conference Call Services Wayne, NJ.

Math/Science Majors- Earn \$15/hr tutoring high school students. Call 201-909-5836.

Camp Counselors, Nurses, Lifeguards, Arts & Crafts Dir and Kitchen Staff Needed for residential camp for children with special needs. Located in Pompton Lakes area. Must be available around June 23rd for approx. 10 weeks. Salary + Room & Board. Call Gerri at 908-686-6011 or e-mail GCarr1426@aol.com.

Clerk, data entry, phones copy/file \$9 hr., need 2 close to campus 201-612-9055 FAX 612-8795

The YWCA of Bergen County is currently seeking a Program Coordinator in Norwood, NJ. Hours are 2:00pm-7:00pm, Mon-Fri.

THE EMPLOYMENT PLACE

IMMEDIATE OPENINGS

Close to Campus

Call 201-612-9055 Today!

Clerical, Data Entry, Reception, Secretarial, Accounting, Customer Svc., Warehouse, Free Computer Training!

Experience with school aged children in a group setting is a must! Call Kellie (201) 444-5600 x 323. EOE

The YWCA of Bergen County is currently hiring recreation counselors for After School Programs in Cresskill, River Vale, Ridgewood, and Westwood. Hours are 2:30pm-6:30pm, Mon-Fri. Person needed to provide a safe, caring, and supervised environment for school aged children. Call Kellie (201) 444-5600 x.323 EOE.

Electronic bill payment company is looking for experienced full time customer service associates. Must have good phone skills and speak English and Spanish. Salary ranges from \$23-\$25,000. Fax resumes to Bill at (973) 696-5866, or mail to Ipp, 22 Riverview Drive, Wayne NJ 07470.

Veterinary Assistant. Weekend and overnight animal caretaker needed for animal hospital dose to college. Call (973) 595-8600.

The YWCA of Bergen County is currently seeking enthusiastic camp counselors for for "SUMMER 2000" We are looking for staff for our camps in Bergen County and Harriman State Park, NY. Camp begins 6/26/00-8/25/00. Call Lisa (201) 444-5600 ext. 346. EOE

The YWCA of Bergen County is currently seeking

Positions Available Immediately for Mad Scientists

Mad Science of North Central New Jersey is currently looking for students to work full time as well as teaching science classes to kids.

Excellent pay-including training

Do You:

- Love working with children?
- Have full-time access to a car?
- Have an outgoing personality?

If you answered yes to these questions, give us a call at (973) 244-1880 and set up an interview.

experienced instructors in the areas of: sports, drama/music, storytelling, arts & crafts, and nature/science, for our summer camps in Bergen County and Harriman State Park, NY. Camp begins 6/26/00-8/25/00. Call Lisa (201) 444-5600 ext. 346. EOE

Entertainment company seeks individuals for costume character appearances at kid shows. Must be: Fun, Dependable, Smart, Energetic. MUST be able to work weekends. GREAT PAY. Also looking for office help: data entry, answer phones. (973) 890-4167.

Positano Restaurant. PT/FT delivery, counter person wanted. Fun working atmosphere, flexible hours, pay & tips. Car a must. Call Steve @ (973) 628-6863.

\$10 will be given to pairs of black-white, close friends willing to be interviewed for a book on interracial friendships. If interested, call Dr. Korgen at (973) 720-3563.

Part Time Work Opportunity: Special Education, Psychology, Speech and Language, or Regular Education student needed to teach language to our 4-year-old autistic child in our home. Seeking dependable, smart and energetic individual. Learn and use the highly-effective Carbone-Sundberg-Partington Verbal Behavior method to bring about spontaneous

Unplanned Pregnancy?



FREE

Confidential Help and Pregnancy Test

BIRTHRIGHT

24 Hour Hotline

1-800-550-4900

201-845-4646

19 W. Pleasant Ave. Maywood (Minutes from Bergen Mall)

expressive language in an autistic child. Teaneck-Hackensack/Bergen County. Call Cesar or Mina, (201) 488-4917.

GARDENER

\$10/hour, 15 hrs/wk, flexible. Just 15 minutes from campus. Work outdoors, get fit, earn cash maintaining private property in Ridgewood. Spring clean-up, lawn care, gardening. Call now (201) 445-3869.

Help Wanted: Waiters, waitresses, and busboys. Part Time or Full Time. No experience necessary. Call (973) 628-1824.

Child Care Services



CHILD CARE

\$9/hr. Just 15 minutes from campus. Care for 9- & 11-year-old as needed, occasional afternoons, some eves. Ideally through summer into fall. References required. Call now (201) 445-3869.

Wanted: Babysitter/Mother's helper To Babysit three children ages 7, 5, 5 in my Ridgewood home Weds. evenings 6:30-8:30. Must also be available two Monday nights each month. Must have own transportation and three checkable references. Experience a plus. Please call (201)612-8724 if interested.

Babysitter wanted for adorable, special needs boy, age 5, and his 9-year-old sister. Our son is a student at new Beginnings. He is very social with limited speech and some signing. Non-smoker only. References required. Please call Heidi at (973) 994-1903.

Help Wanted Child Care/Assistant Mother of 7 & 10 year olds with Small business seeks help 3pm to 7pm school year Flexible Summer Hours Must be reliable and drive own car And enjoy a variety of duties \$8 per hr Call Kathi @ 305-6818.

Real Estate For Sale/Rent



One Female Roommate Wanted to share 4BR House Clifton \$350.00 + ult. N/S 21 yrs+ only Call Nicole 973-546-8918 or Alexis 973-546-2431

Three Bedroom apt. available in Totowa section, 10 min. from campus. Also room to rent. Call (973) 942-1452 or e-mail at jack@4rental.com for details.

Personals



To My little Michelle, I'm so proud of you! You're a wonderful addition to the family tree. Forever your BIG, Danielle

AST Assoc. Melissa- Little keep up the good work and make me proud-love your big sis Mich.

AST Assoc. Heather- To my little, make me proud and stay strong. I love you and am always here for you-Your big Kelly

To My Little! Laurie, you're doing great! Make our tree proud!! Love in Theta Phi Alpha! Love, your Big, Nicole

Joe Martinelli- Thanks for all your help this week- you're the best. Laurie Q.

NJ CIVIL SERVICE

POLICE TEST PREP COURSES

5 HOURS \$150.00

www.jobs4police.com

(973) 887-7223

Beacon Sports

Page 24 • William Paterson University

Monday, March 27, 2000

Pioneers' homecoming proves victorious

By Ira P. Thor
Sports Writer

It was a quiet sound, but to the avid Pioneer baseball follower, the wind blowing across the campus Saturday carried music to their ears. "There's no place like home. There's no place like home. There's no place like home."

With the ruby slippers tucked quietly in the dugout the Pioneers concluded a triumphant return to the east coast, following Friday's 7-1 home-opener victory over Rensselaer Polytechnic Institute with an equally as impressive 7-6 toppling of post-season regular Cortland State.

And after the West Coast trip the Pioneers (5-7) endured, the sight of Wightman Field must have felt like mom's home cooking.

It doesn't hurt to have Shaun Stokes on the mound, either. California wasn't kind to the Oak Ridge native. The junior right-hander (1-2), who will surely be drafted in the opening rounds of the June amateur draft, recovered from an 0-2 spring trip, to eight innings of one-run, seven-strike-out baseball, as the Pioneers dropped RPI to 6-4 overall.

"I liked being back home," Stokes admitted. "The California

trip was miserable. I didn't have fun at all. Hopefully being back home will jump start us."

With the graduation of Craig Cutler, Mike Belovich, Mark DeMenna, and R.C. Renshaw offensively, the Pioneers may have found an offensive jump start in senior Corwin Belfield. The Paterson native may have given Engineer catcher Todd Napolitano a migraine, going 3-3, and stealing four bases.

"He's certainly capable of taking over a game," said head coach Jeff Albies. "We talked about it; I want him running as much as he wants to run. When he's hitting, he provides a tremendous offensive threat for the other team's defensive."

"I wouldn't say I'm a new offensive threat," Belfield admitted. "I just bring a lot of leadership and experience. I take advantage of certain situations in the ballgame. Each year everyone goes into a season with a goal in mind. This season I want to break [former New York Yankee and Chicago Whitesox] Dan Pasqua's stolen base record [31 in 1982]."

The Pioneers broke the game open in the second and third innings. With a man on second, Belfield smacked a double off the

left-center field fence, to tie the game at 1-1. Two pitches later, that migraine swelled up, as Napolitano's throw to third sailed into left field, allowing Belfield's thievery to generate the eventual winning run. The Pioneers batted around in the sixth, and scored three more runs—two on a blood-single by senior second baseman Dan Torres.

"Every time he gets on base, he upsets the way the other team approaches the next batter," Albies continued. "It's not even him doing it [stealing the base]—it's the threat of him doing it. That's the good thing about him. When he sees an opening, he capitalizes on it."

Saturday, the big inning again was the ally of the Pioneers. WPUNJ scored three times in the first inning, and held a 3-1 lead until the third, when the Red Dragons scored twice to notch the score at 3-3.

After Cortland State took a 4-3 lead with one run in the top of the fifth, the Pioneers tacked on four more runs in the home seventh.

After senior Jason Messina went six innings, junior Dan Snyder (2-1) entered in the seventh, and went the rest of the way to claim the victory. But the top of the ninth proved adventurous, as Cortland added two runs, but not a win. After two Pioneer errors, and

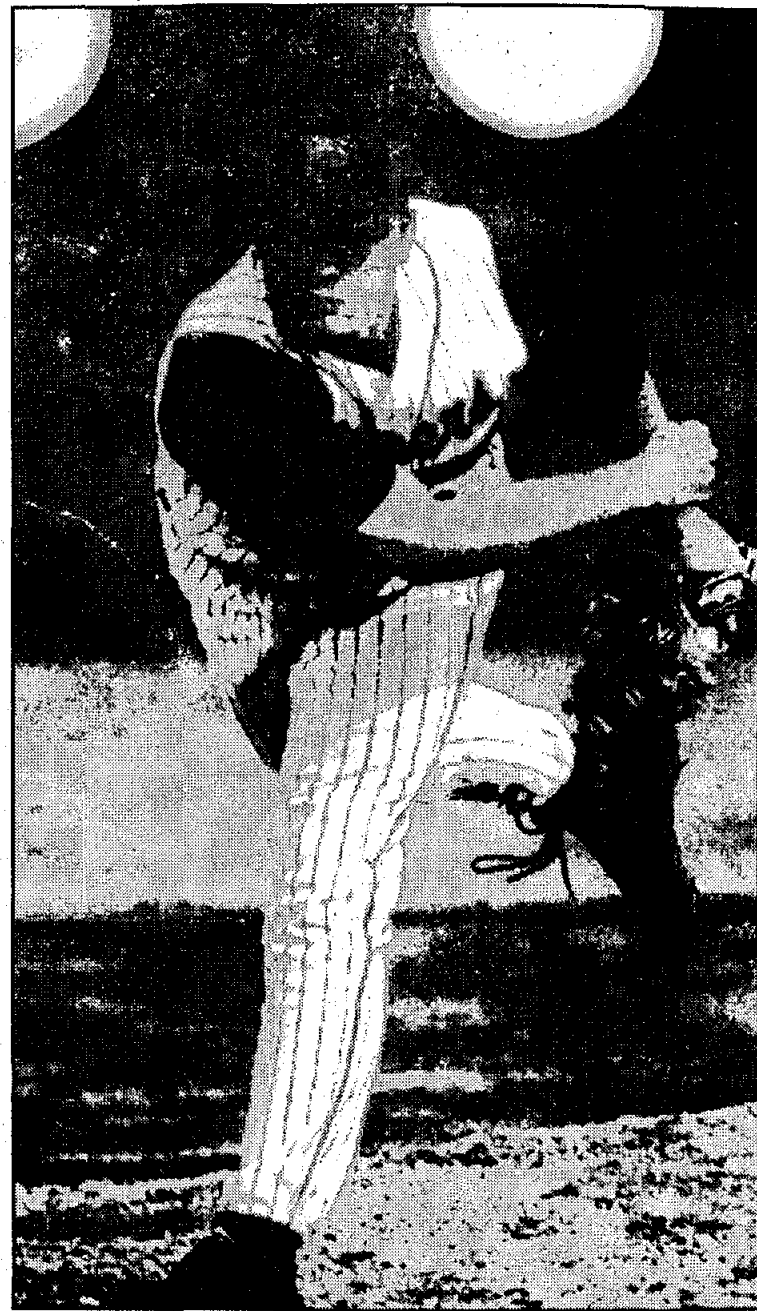
five straight Red Dragon hits, Cortland had runners on first and third with two outs. Snyder, a righty, made two quality pitches to go up 0-2 on the left-handed Cortland batter. The Red Dragons sent the runner from first, and Snyder calmly stepped off, and threw to first baseman Mark Kalish for the game-ending tag.

"If you make mistakes on them [Cortland] you're gonna pay," Albies said. "They're not a fly by night team. I didn't get worried until the tying run came to the plate. Then I got a little concerned."

With both teams committing three errors, the Pioneers are certainly happy to escape with a victory.

"On a scale of 1-to-10 our defense has been poor—a four," Albies admitted. "We made 28 errors so far. That's much too much for a quality college baseball team. When you have the pitching we have, you can't give them 31 outs [instead of 27-three per inning for nine innings]. If the defense doesn't improve there's gonna be some changes. With the pitching we have out there, we owe it to them to pick the ball up."

Like Albies noted, picking the ball up has proved difficult so far. In 10 games on the left coast during which the Pioneers went 3-7,



Beacon file photo

Pioneer pitcher Shaun Stokes scattered seven hits, struck out seven and walked two to lead the Pioneers over Rensselaer on Friday.



Beacon file photo

Senior center fielder Corwin Belfield went 3-for-3 with an RBI-double, a run and four stolen bases.

the team committed 22 errors.

"I knew the Californian teams played a month before we even got on a baseball field," Stokes noted.

We knew [once we did get on a field], it wouldn't be perfect. Mistakes came at costly times."

"The way we approached closing out the game [Cortland] wasn't so good," Albies continued. "We're happy to get the win. Up until the ninth inning I felt we played a good game. I still think we're leaving too many people on base. But I think we have our confidence back now, and the ship is going to be righted."

And this week is a good time to stay afloat. If the Pioneers hope to get back to the Division III World Series for the fourth time in the last six years, they must win the New Jersey Athletic Conference, or finish no worse than second. That task begins Thursday when powerhouse Montclair State pays the Pioneers a visit in the conference opener.

This week's schedule in Pioneer Sports March 28-31

Tuesday-

Baseball @ West Point

3:30pm

Softball @ Ramapo (DH)

3pm

Wednesday-

Softball @ Muhlenber (DH)

3pm

Thursday-

Baseball v. Montclair

3pm

Friday-

Softball v. NJCU (DH)

3pm