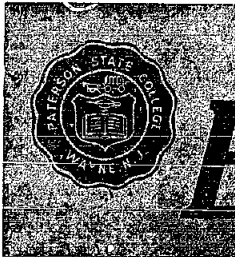
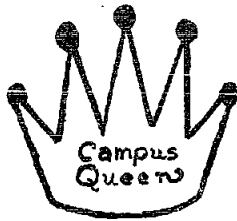


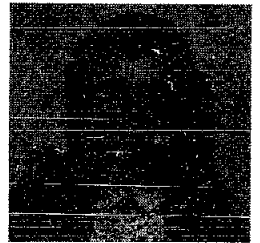
19



66



# state Beacon



PLEASE

Volume 31—Number 13

PATERSON STATE COLLEGE

February 10, 1966

VOTE

## Women's Voters League Champions Income Tax

The New Jersey Legislature is faced with a choice of selecting either a Sales Tax or a State Income Tax as the broad based tax solution to the State's economic problems. New Jersey's reliance on local property taxes for school funds and needed reforms in the State remains among the most extreme in the nation. There are only three other states with a higher reliance on property taxes than New Jersey and these states are based on an agricultural livelihood.

Why should we as students be interested in the State's problem of a broad based tax selection? Mary Bugel, of the Women's Voters League tells us that there is an obvious one. Many qualified students, who merit a good education are being turned away from our institutions of learning because the State is unable to accommodate either an enlarged enrollment or a hike in faculty salaries. The broad based tax would put needed funds into the field of education. The Women's Voters League supports the State Income Tax as opposed to the sales tax because they feel it is fair, economical, flexible and that it corrects any inequality in taxation which many New Jerseyites suffer.

The Voters League feels that we can set up a strong enough "platform" in favor of the State Income Tax which will sufficiently "punch holes" in the argument for a Sales Tax. A few of these oppositions can be evaluated. Those in favor of the Sales Tax, claim that "The peo-

ple of New Jersey prefer a sales tax because they wouldn't notice it as much as an income tax." While this is true, the Voters League claims that two-thirds of the families in New Jersey would pay less with a State Income Tax. This figure would include all families with an annual income of up to eight thousand dollars. A second of many opposing views can be expressed with the idea held by those in favor of the Sales Tax. These supporters insist that "Everyone should be made to feel the cost of the government services, especially those of a lower income." Why should these people be overburdened by a tax that all should be made to submit to proportionately?

The League of Women Voters has championed the State Income Tax because they feel it is beneficial to the majority of New Jersey residents. Their claims are varied and numerous, while at the same time they offer a reasonable basis on which to base your selection of the two proposed alternatives to the broad based tax.

### It Was Today.

1919. Atlantic Ocean.

The first marriage should take place on the back of a whale.

## Pioneers Present Dramatic Reading

by Joyce Koplin

Members of the Pioneer Players are hard at work on their next presentation—a two act play by Nelson Bond of George Orwell's *Animal Farm*. Pioneer Player President Richard Sacks is directing the production as a dramatic reading.

Rich said that the play had been chosen for its versatile nature. "We wanted something new; we spent a whole day reading scripts before we chose this one. It lends quite easily to being a dramatic reading."

Rich's technical director is Jeff Rapport. Jeff has developed a unique lighting system for the show. He will employ pin spots on the speakers when they are involved in any type of action. The readers have been seated on stage in a manner which suits both the director and the technical director's purpose. Over 200 cues have been arranged for the lighting crew. Jeff stated "to my knowledge, this lighting pattern is unique in this area as far as any other college having used it. The lighting is intended to reflect the characters. The colors are reflective of the boldness of the Orwell characters and will re-

(Continued on page 3)

## Finalists Discuss Ideals For PSC Campus Queen

by Connie Nicholson

Today the students of PSC are taking the opportunity to choose their campus queen. This year, the election committee, headed by Mike Broome, decided to depart from the policy of former years of having the winners chosen by a committee of faculty members. The representative of our school will be chosen directly by the students by election. The candidates, nominated by either a club or themselves, were narrowed down to a field of five by a primary election last Friday. The pictures of these finalists, Ginger Lannon, Diane Lourake, Rosemary Riordan, Ginny Schaffer, and Ellen Taylor, are in the snack bar, and this issue of the Beacon.

Ginger Lannon, the only finalist who is a junior, is from West Orange. She is a Speech Correction major, and a member of Pioneer Players and the New Jersey Speech and Hearing Association. This summer Ginger worked with Dr. Forman in the speech clinic at Barnert Hospital and lists painting and guitar among her hobbies. Ginger believes that at PSC "there is a great chance to know people" and that the Campus Queen should "like people," and "show pride in her school without any effort."

Diane Lourake, a resident of Heritage Hall, is from Linden. She is a sophomore Physical Education major who is very proud of her Greek background. Diane is a member of the Evening Series Committee and is very active in the WRA. That the Campus Queen should put sincerity over beauty is one of Diane's beliefs. She thinks that the winner should be willing to

do her best to represent her school, which Diane did last year at the NJEA convention.

Roe Riordan, a sophomore Physical Education Major from Dumont, is one of our varsity cheerleaders. Her interest in sports is further carried out in the Phys. Ed. Major Club, and her participation in skiing. According to Roe the Campus Queen should "extend her friendships beyond her immediate group" and "have varied interests in school."

Ginny Schaffer is a sophomore art major who was very active in the Freshman Hazing Committee. She is now in the Pioneer Players, Tennis Club, the SGA Social Committee, and is the co-chairman of the decorations for the Coronation Ball. Ginny believes that the Campus Queen should be "a representative of all the students of PSC" and that she should give her "time and enthusiasm to making school activities successful."

Ellen Taylor, a sophomore KP Major, is currently a member of the SEA, and was also a member of the Freshman Hazing Committee. Ellen thinks

(Continued on page 2)

## Editorial

I am sure that we all, at one time or another, have asked ourselves, "What is wrong with Paterson State?" Our answers have undoubtedly varied. However, I would like to point out, there is nothing wrong with Paterson State College. It is an institution of higher learning and provides the facilities for such. Therefore, the question should be, "What is wrong with the students population at Paterson State?"

Although it is easier to blame the institution, should we not stop and evaluate our own personal needs and purposes in the light of what is being offered? We have heard many complaints and arguments against having 3:30 activity hour. However, we are fortunate in having such a time allotted to us, no matter what time it is. At most colleges, all activities are conducted in the evening, morning, or whenever the advisor can make it.

If people would only stop and think for a moment—they would realize that they are being offered many varied opportunities to meet people, expand their horizons, and enjoy college life. There are over 50 recognized organizations on campus, plus special assemblies cultural exhibits and programs, social functions, and athletic programs. I am sure that one of these could interest you.

Why not try?

KG



## STATE BEACON

Published weekly during the fall and spring terms by the Student Government Association of Paterson State College, 500 Hampton Road, Wayne, N. J. The STATE BEACON, with editorial offices in the College Center, campus, is operated through SGA sponsorship and advertising. Content of the newspaper represents the opinions of the student body and does not reflect the opinion of the SGA, Paterson State College, or the State of New Jersey.

**Editor-in-Chief:** Angela Scallio  
**News Editor:** Linda Weller  
**Feature Editor:** Ron Hoffman  
**Sports Editor:** Steve Hinchey  
**Photographer:** Vette Segall  
**Circulation Editor:** Joyce Koplin  
**Copy Editor:** Mary Ann Corrallo  
**Faculty Advisor:** Grace M. Scully  
**Assistant:** Josephine Latzoni  
**Staff:** Bob Morris & Phil Yourish  
**Photography:** Gwen Parker  
**Layout:** Jennie Struble  
**Staff:** Beth Altkaus, Carol Benson, Donna Cassano, Lon Lawson, Pat Radcliffe, Mary Ann Redington, Melaine Springer  
**Columbian:** Laura Joanne Lager and Jan Drizinovic

## Campus Queen

(Continued from page 1)

that the Campus Queen should be "an outstanding example of the profession for which she is preparing."

This year, for the first time, the Coronation Ball will be held in the cafeteria. The theme of the ball is The Palace of Versailles. Admission is free and refreshments will be served. The ball starts tomorrow night at eight o'clock, the dress is semi-formal, and everyone is cordially invited.

## PSC Magazine Combines Fall and Spring Issues

Essence, the Paterson State College literary magazine, has announced that there will not be a publication for the fall semester of 1968-69. Rather than publish bi-annually, as has been the custom, there will be a complete issue in the spring.

Those manuscripts which were submitted and accepted for the fall issue will appear in the May issue of Essence.

PSC students are urged to submit their manuscripts as soon as possible. Poems, essays, articles, plays, or short stories may be left in room H203 atop the filing cabinet designated for them.

## PSC Newman Wins Club Of The Year

Newman Club Pres., Frank Karpel, has announced that the PSC Chapter has won the Club of the Year award of the New Jersey Province. The club is proud to have been chosen over such competitors as Rider, Douglass, Rutgers, and Stevens.

Frank has been elected as the Executive Vice - chairman for the New Jersey organization. He will take office on May 1, 1966 for the 1966-67 school year.

There will be a panel discussion on interfaith dating at the next meeting of the Jewish Student Fellowship. Panel members include Joyce Koplin, Phil Yourish, Linda Fisher, Bruce Ghman and Riva Barnett. Rabbi Saslow, the club advisor, will moderate and lead the discussion. An open invitation is extended to everyone. The meeting is scheduled for Feb. 22, 1968, at 3:30 in the Little Theater.

It is hoped by the individual organizations that an Interfaith Council can be formed to promote fellowship and human relations between the groups (Newman, JSF, and Inter-Varsity). Joint meetings and activities would be offered once the Council was formed and activated.

### CORRECTION

The Coronation Ball will feature refreshments rather than a buffet dinner.

## Letters To The Editor

Contributions to this column are the opinions of the readers and, as such, are unsolicited. All letters are required to be of a standard that will reflect the best interests of the college. Anonymous letters will not be printed but names will be withheld on request. The Beacon reserves the right to edit all letters.

Dear Editor,

The Senior Class, cheerleaders and Color Guard wish to take this opportunity to thank the more than two-hundred loyal Paterson State College fans who turned out and made last Saturday's pep rally a huge success. Many people have commented that this pep rally was the biggest in many years.

In spite of the phoney front that I put up in advertising, the primary purpose of the rally was NOT to scalp the Indians, but to say THANK YOU to eighteen hustling ball-players and two coaches who gave their all for the Big Orange this season.

The basketball team and coaches at Paterson State are the most over-looked people when it comes to praise and appreciation for services rendered. Everyone talks about team spirit and loyalty when you have a losing record. It seems that the team that finishes in last place always gets an award for best sportsmanship or some other disgusting thing.

It is time that the Paterson State College administration allows us to recruit players or drop the sport. We have heard that the coaches are not overlooking the present boys, but would like some players with previous experience. Isn't it time that we gave the boys who put out gallons of sweat what they want? Is it asking too much for a few established players? For four sickening years I've been asked the same question by my friends, "How does it feel to go to an all-girl school?" My answer? "Pretty sickening, not one of our girls can make the varsity."

Sincerely,  
Joey D.

Dear Editor:

Unless I am mistaken what a student learns from a lecture depends primarily on the Lecturer and on the material presented. Here at Paterson in the course of Problems of Contemporary Society it seems that the Social Science Department has fallen short in one of these areas. The first series of lectures from Dr. Szent Miklosy were almost impossible to understand unless you were sitting in the front few rows. Dr. Szent Miklosy probably knows more than enough of his subject to lecture but his problem is that the majority of the students attending could not understand him very well, resulting in time wasted on the part of the student as well as the lecturer. Now in the second series Mr. Kyriakides is presenting the students with the same problem. Many of the people teaching this course realize this problem but have apparently done nothing to correct it. Why should a student waste an hour at a lecture that he or she can't understand?

Arlene Martosin "SS"

Dear Editor:

We students are "required" to pay an annual \$10 parking fee to assure us of a place to park on campus between two white lines. It sounds like a pretty good idea on paper, but in real-

ity, it's a farce.

It's quite apparent that there aren't really enough spaces for all parking students. The students on the rear windows of our cars are supposed to designate the lots we're to park in, but apparently someone forgot to tell the freshmen that.

So what next? Our library construction begins and a way goes more space. One lane wouldn't have been so bad, but the workmen decided they needed another lane to park their cars in.

Then along comes that soft, white stuff called "snow". We were given a holiday, figuring when we returned, the lots would be cleared. Well here it is almost two weeks later and the "two white lines" are still no where to be seen.

The gatemen are no help either. We realize that they have a job to do but must they be so miserable? After all, they have spaces for their cars.

There is a maintenance crew on campus that we're sure is equipped with a snow plow. So what are they waiting for?

These feelings we have expressed are, we're sure, shared by almost everyone on campus. Maybe that "proposed ski lift" wasn't such a bad idea after all.

Two Unparked Sophomores

Dear Editor:

The parking situation this week is Lots 3, and 4, and the "strip" has been incredible! What is going on with the empty land between Lots 3 and 4? I noticed students were allowed to park there this past week, but then students were forced to push and pull one another from the mud. It would certainly be encouraging to hear that this space would soon be a paved lot. It seems to me that a \$10.00 parking fee should entitle the students of this campus to more desirable parking conditions.

**VOTE  
FOR  
YOUR  
CAMPUS  
QUEEN**

**BUSINESS MANAGER:** DOUG BRYAN  
**CARTOONIST:** LESLIE OMELIANUK  
**EDITORIAL EDITOR:** AL PECI  
**FACULTY ADVISOR:** GRACE SCULLY  
**STAFF:** SALLY MAC DONALD, CAROL GRAZIOLA, PAT RAYLIFFE, MARY JEAN YONACHIO, VETTE SEGALL, GINGER KONCEVITZ  
**ASSISTANT CARTOONIST:** KAROL BENSON

from Paterson State College, Montclair State College, Jersey City State College, Newark State College, and Fairleigh Dickinson University. After thinking for ten min-

Junior class primary election  
4:30 WRA Activities—Softball  
SGA Exec. Committee  
Friday, April 16  
Good Friday—No Classes

W-16  
Gym  
CC Conf.

## WEEKLY CALENDAR

## Monday, February 14

9:00-3:00 Jr. Prom Sales  
4:30 Play Rehearsal  
WRA Bowling

## Tuesday, February 15

9:00-3:00 Jr. Prom Sales  
3:30 Freshmen Class Meeting  
Junior Class  
Social Science Society  
Essence  
Sel. Swim. Act.  
Internurals  
Evening Series Comm.  
4:30 Play Rehearsal  
WRA Basketball  
8:15 Basketball (Jersey City)

## Wednesday, February 16

9:00-3:00 Jr. Prom Sales  
9:00-3:30 Women's Army Corp  
4:30 Play Rehearsal  
7:30 Men's Fencing FDU

## Thursday, February 17

9:00-3:30 Jr. Prom Sales  
9:00-3:30 Women's Army Corp  
3:30 SGA Exec. Comm.  
Yearbook  
Pioneer Players  
Natural History Club  
Sel. Swim. Act.  
Eng. Club  
Campers and Hikers  
Internurals  
Newman Club  
Math Club  
Hospitality Club  
Camp Weequahic Interviews (Films of Camp)  
Modern Dance WRA  
Brass Choir  
4:30 WRA Basketball  
6:30 Women's Fencing (Jersey City)  
7:30 International Relations Club  
"Eroica" Austrian film based on Beethoven's  
Symphony.  
8:00 Basketball (Pace)

## Friday, February 18

9:00-3:00 Jr. Prom Sales  
1:30 Animal Farm Pioneer Players  
8:30 Animal Farm Pioneer Players

## Saturday, February 19

2:00 Men's Fencing (Newark Rutgers)  
8:15 Basketball (Hunter)  
8:30 Animal Farm Pioneer Players

## Pioneers Present

(Continued from page 1)

veal the changes in them during the progression of the reading.

Mollie Snyder is the music co-ordinator for the production. After researching the possibilities, she has decided on an original track. Upon some 17 cues, various effects will be created to enhance the action of the play. Percussion instruments and some original sounds and selected recorded music will be used.

This is definitely the biggest technical production that the college has seen. The dramatic reading, stationery choreography, original sound track, and

the intricate lighting system is a new venture for the student group. If the presentation works out as well as is expected, the group will have more dramatic readings in the future.

There will be only 418 available seats for each evening's performance. An advance ticket sale will take place from 1-4:30 p.m. Feb. 14-18 in the Center for the Performing Arts box office.

## JUNIORS

Bids for the Junior Prom will be on sale Feb. 14-25. Please come out and support your class.

## On The Go

For over 40 years men and women have acclaimed the Clam Broth House, more popularly known as "Kelly's," as one of the best and most atmospheric sea food houses in the metropolitan area. At Kelly's, women are not permitted in the bar, however the large dining rooms provide comfortable surroundings for families. Here you can order a large and filling pot of steamers for \$1.50 which will have you eating for hours. The atmosphere is provided by the large variety of people that eat there. Sliders with broken legs tell their stories to sailors who in turn tell of their exploits in New York Harbor to the students. If you like to eat sea food and have a few stories to tell - you will be pleased with Kelly's.

Oct. Rm.  
WH Lounge  
Aud.  
Gym

Oct. Rm.  
WH Lounge  
CC Conf.

W-06  
L.T.  
W-232  
Pool  
Aud.  
W-05  
Gym  
W-101  
W-11  
H-110  
H-109  
Gym C  
A-101  
Gym  
L.T.  
W-101

Gym

While eating clams you may want to try a new drink which is claimed by the surfers of California, but actually originated with the Jet Set at Saint Tropez. It's called Panichi and consists of 7 parts beer to 4 parts seven-up. No one likes the way it sounds; everyone loves the way it tastes. The total cost of this date is \$2.50, tip included. Parking is free and in a close area. "Kelly's" is located at 38 Newark Avenue just off Washington Avenue in Hoboken, New Jersey. It's easily accessible via the last exit in New Jersey on the approach to the Lincoln Tunnel.

## Conference Planned To Discuss Vietnam

"Vietnam in Prospective: A Policy Planning Session," is being presented by the International Relations Club as a one day conference on Saturday February 23, from 9:30 to 8:00 p.m. The conference will feature three speakers and a question and answer session to be conducted by the speakers.

The speakers will include a member of the State Department; Miss Monika Flor a refugee from Communism who has knowledge of its appeal and its lack of such; and Curtis Crawford, a graduate from Chicago University at the age of 17. Mr. Crawford has done 5 years post graduate work in International Relations and is currently teaching at N.Y.U. and also in the New School of Social Research. At the question and answer session these speakers invite the students to express their views on Vietnam in the form of a policy planning sessions.

All Paterson State students are invited to attend this conference. Students from the Middle Atlantic Regional International Relations Clubs and from surrounding colleges will also be in attendance. Sign up sheets will be placed in the snack bar and on the bulletin board outside the Social Science office for interested students. This is so an estimate as to how many students will be coming and so that they can be assigned to policy planning sessions. Also students are asked to indicate if they want lunch and a steak dinner, the total of which will be \$3.00. Interested students

## Miss Paterson State Reviews Past Year

Last year, Kathy Glade, a sophomore majoring in the education of the mentally retarded, was crowned Miss Paterson State at the Coronation Ball. Kathy is now a junior and although her reign will soon be ended, her memories of that cherished year will always remain.

To highlight some of the qualifications necessary for the contest, we will start at the time last year when Kathy,

who said, "I had never thought of becoming Miss PSC" was sponsored for the contest by the Women's Chorus. Her hobbies were cooking, sewing and dance; her activities were the Special Education Club and working at the Fair Lawn Opportunity Center; her honors were being crowned Miss Home and Sports at the First Annual North Jersey Home and Sport Show held at the Riverdale Armory, a contest sponsored by Matzner Suburban Newspapers and Miss Snowball Queen for St. Johns Cathedral in Paterson.

"Being Miss Paterson State is unique because it only happens once." Kathy's boyfriend whom she will marry this June 11, said that he sort of expected her to be chosen. Likewise, her brother and two sisters were also thrilled.

As Miss Paterson State, Kathy was a stand-in for Miss New Jersey at a boatshow and a fair in Parsippany, presented the prizes at the Fashion Show here at PSC, moderated the SGA election assembly, and participated for special education at Trenton State.

What should Miss Paterson State be like? Here are Kathy's views which may, perhaps, serve as an inspiration for all girls aspiring to become Miss PSC. "She should possess sincerity, not put on airs, and be herself at all times. She should present herself as an individual and a mature, refined, well-rounded person with a sense of humor, a sense of responsibility, and an open mind in all her relationships with others."

"I'm honored that it happened to me and I'm sad that the honor must diminish," said Kathy. So ends her reign. Soon, however, another girl will experience similar emotions as she is crowned the new Miss Paterson State.

should follow the upcoming issues of the Beacon or contact Joanne Roe, Robert Schnare or Marie Carida. There will be an IRC meeting on Thursday, February 17th in the Little Marie Carida. There will be an IRC meeting on Thursday, February 17th in the Little Theater to discuss the conference. All are invited to attend.

The Village Players will present Spoon River Anthology this Friday and Saturday night, February 11 and 12. The performance will take place at the East Wyckoff at 8:30 P.M. There will be special low rates for students.

HAPPY BIRTHDAY,  
ABEI

Feb. 12

## BOOK COLUMN

The purpose of this column is to inform the college community of books written by professors at Paterson State College. This week we are featuring books written by professors in the social science department.

Study Lessons in Map Reading is the title of a book written by Dr. Kenneth Job and Miss Lois Weiser, both professors in the Social Science Department at PSC.

Published by Follett Publishing Company of Chicago, the book was written in the fall of 1965. The test emphasizes vocabulary and reading skills in addition to an understanding of map reading.

The authors have made use of many maps in order to give students an idea of the relationship of a country to its surroundings as well as its general size and shape. The written material in each lesson is scaled to a fourth grade level. Questions after the text are organized to test the student's reading comprehension.

Dr. Job has also collaborated with Dr. Paul V. Vouras on a geography guide book published in the spring of 1965. Guides to Geographic Studies is a workbook designed to accompany Introductory College Geography by Griffin and Chathan. This book is now in use by over sixty colleges. Vocabulary is emphasized in the text and questions can only be properly answered if the student has read his assignment.

Dr. Job and Miss Weiser are now preparing another book entitled World Geography which is designed for slow readers on the junior high school level. Dr. Vouras will act as consultant for the text slated to be published next spring.

## FOUND

An officers ring from Fort Benning Infantry School (OCS) class of 1954. See Mr. Engels, Outdoor Co-ordinator.

**SKI Snow Bowl**  
MILTON, MASS. - ONLY 25 MI. FROM PATERSON  
WHERE THERE ARE NO WAITING LINES!  
3 T-Bars & 3 Rope Tows ready to shoot you to the top "FAST"  
Max. waiting time 5 min.  
Write or Call - Free Booklet "PB"  
Tel: 201-897-8008

Do you have an open period during the day?  
You will find it convenient to visit  
The "TRIPLE A" BARBER SHOP

specializing in the standard & latest styles of haircutting for men & women  
Razor cutting & hot comb styling as you like it.

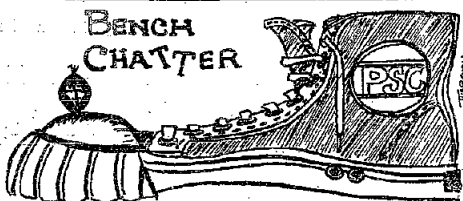
BRING IN THIS AD FOR A  
FREE INTRODUCTORY HOT COMB

442 Pompton Road

278-9668

Next to Paterson State

# Paterson State 18 West Point



by Ron Hoffman

The Beacon Sports Staff feels that it is time to give credit to a member of the Physical Education Department who puts in many hours each week above and beyond what he is required to do so that the students of Paterson State may continue to rise upward in the field of athletics. I am speaking of Coach Wilbur Myers who, aside from teaching his classes, coaches a successful soccer team, directs the men's intra-mural program, advises the bowling team and will coach the golf team.

During the soccer season Mr. Myers attends many high school soccer games in hope of finding high caliber players who would be interested in attending Paterson State. Most of his activity periods are taken up by the intra-mural program and still more time is used in advising the bowling team and preparing the schedule and tryout times for the golf team. It is hard to imagine all of the paperwork required to continue running these activities smoothly and efficiently.

The Beacon says hats off to Mr. Myers for doing an outstanding job for the students of this college. The next time you see this busy man take time out to stop and thank him for helping us by doing just a little bit more than is required.

## Tennis Club Inaugurated

Paterson State College's Tennis Club announces its Spring semester program. Activities will include tennis instruction, indoor tennis play periods and two tennis exhibitions.

Tennis instruction for anyone wishing to learn the game or those who would like to improve their game will begin as soon as the College Gym is available.

Arrangements have been made with the Bergen Tennis Arena, located in Waldwick, to rent one clay court from 4:00 p.m. until 7:00 p.m. every Wednesday for a two-month period beginning Wednesday, February 2nd. This part of the spring program will be limited, for the time being, to those members who already play the game of tennis.

A limited number of tickets are available for an evening of tennis featuring Arthur Ashe, Jr., the United States second ranking singles player. He is the recent winner of four Australian tournaments and the first Negro to be a member of the United States David Cup Squad. The exhibition will be held at the Y.M.C.A. Gym on Upsala College, East Orange on Monday evening, February 14th beginning at 7:30 p.m.

Later in the Spring a tennis demonstration - exhibition will be conducted on our own court on Campus. It will feature Mr. William Scarlett, a past Men's Singles champion of New Jersey and No. 13 ranked singles player in the East.

This is a fine opportunity for

any member of Paterson, faculty, student or staff who is interested in tennis. If the turnout is large enough the possibility may appear for a future Paterson State College Tennis Team competing with other area schools.

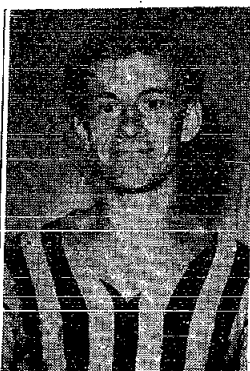
For further information on the club, or tickets for the February 14th exhibition, see Dr. Pizza at the Art Department.

## Montclair State Rolls Over Pioneers 113-49

Wayne — The Indians of Montclair and the Pioneers of Paterson ended Paterson's "Scalp The Indians Week" with a repeat performance of Custer's last stand.

Playing before a capacity crowd Montclair scored almost as well as they routed the hapless Pioneers 113 to 49. The Indians started strong taking a 23-1 lead and never let the Paterson quintet come within twenty points for the rest of the game. Without Steve Clancy, who scored twelve of the Pioneers' twenty-two first half points, Montclair would have probably have held the home team to almost nothing. Clancy fouled out in the opening minutes of the second half, but by this time Montclair had emptied their bench and were continuing to score twice to every Pioneer tally. The only bright spot for the Paterson team, other than Clancy, was sophomore Paul Ottavio who grabbed eighteen rebounds in his second varsity game of the year.

Paterson hit on only twenty-three per-cent of their field goal attempts while shooting seventy-four per-cent from the foul line. This loss was the 39th consecutive conference loss for Paterson State and brings their overall record to a dismal 2 wins and 13 losses.



## N.J.S.C.C. Name Saxon All-State

Soccer Co-captain Hank Saxon has been named to the first team of the New Jersey State College Conference Athletic Soccer "All State" team. Hank received "honorable mention" last year as a freshman and moved up to the first team berth on the merit of his outstanding defense against the league's top scorers. Along with his outstanding defense, Hank also found time to score a number of times during the season.

Ken Madeska, a freshman standout from Hackensack, gained an "honorable mention" position at forward. Ken broke the school's scoring record for one season, held by former soccer star Carmen De Sopo, by scoring a total of 16 goals. He scored in 9 of 11 contests he participated in having missed one game due to an injury. Ken performed the hat-trick (three goals from the field, and went 1 for 1 from the penalty mark).

Goalie Tom De Stefano was also named to an "honorable mention" position in his first year at the game. Tom played an important part in the Pioneers 8-3-1 record. Tom teamed with John Cotsokos to hold the opposition to a combined low total of 1.16 goals per game.

These three men will provide Coach Meyers with a strong nucleus for next year's team which will retain many of the starting players from the 1965 squad.

**PLEASE VOTE**

Art Lustig — Director of Camp Weequahic, Lakewood, Pa., will be on campus Thursday, Feb. 17, at 3:30 in room H109 to show films of the camp and to interview interested students wishing counselling positions.

## Fencers Foil Cadets Remain Undefeated

West Point, the stomping grounds of such illustrious figures as Glenn Davis, Doc Blanchard and Red Blaik, became the scene of the most important meet of the Paterson State Fencing Team.

On February 5, the Pioneers travelled to the Military Academy for a showdown between two of the East's top undefeated teams. Only one of these teams remained undefeated as Paterson State electrified a partisan Army audience with an 18-9 victory.

The scoring went as follows: after three straight sabre victories, by Captain Lon Lawson, John Cilio and Tim Szabo, Jack Zellner took a foil victory to make the score 4-0. However, Army began gaining ground by winning two out of three in foil and two out of three in epee. With Ed Harrison's victory, the score stood 5-4 in favor of the Pioneers at the end of the first round.

The slim margin soon faded as the sabre team again battered Army. Jack Zellner and Chet Pilgrim won their second round foil bouts with Ed Harrison contributing his second victory of the day, the score stood 11-7 at the conclusion of the second round. Once again, the sabre team took the third round from the cadets. Lon Lawson and Jim Szabo quickly disposed of their rivals making the score 13-7, leaving it up to John Cilio to clinch the meet. With the score set at 4-4 in his bout and only a few seconds remaining, John scored on his opponent to bring victory to Paterson State.

Jack Zellner followed with his third victory of the day. Chet Pilgrim then rounded out the foil scoring with his number two win. In the third round of epee competition, Bob Moore, a substitute, eked out a 5-4 victory. Scott Dyller then followed with a winning epee bout to bring the final score to 18-9.

The sabre team, who soundly defeated Army's team, undoubtedly proved itself to be one of the finest in the East. For the team, Lon Lawson, John Cilio, and Jim Szabo contributed three victories apiece. On the foil squad, Jack Zellner, who also won three, Chet Pilgrim and Jim Lawther compiled a 5-4 record, while Tom Di Cerbo, Scott Dyller, Ed Harrison and Bob Moore went 4-5 in epee.

In the previous weeks the Pioneers defeated Temple, this year's Middle Atlantic Champion in fencing and also completely

## Coed Champions Spear Drew

The intercollegiate championships, Paterson State's women fencers, started off the 1968 season on the right foot as they defeated Drew University by score of 12-4.

Leading the attack were captains Carol Mittleider (4) and Ann Stokes (2-1), who have displayed great talent in previous meets. In other bouts Diane Kimble (20), Cherie Herbert (1-1), Bettie Marchese (Marchese) (1-0), Trudy Quiley (1-0), and Andy Forman (1-0) made great contributions toward the victory. Laura Legut put up a strong effort but lost a close bout as Drew's strongest fencer made the final touch in 4-3 bout.

This Sunday, some of the women fencers will compete in the qualifying round for the North Atlantic Championship. The qualifiers for this section championship will be entitled to fence in the competition which will be held in Boston from April 30 to May 1. The women's fencing team will be taking their first step in becoming the Intercollegiate champion of 1968.

outclassed a poor team from Lafayette, 24-3.

Coach Sully's men exhibited display of power in every department that left both Pennsylvania teams baffled. The match against Lafayette continued the winning streak of the sabre team, while epee ended 8-1 and the foil team followed with a 2-2 record.

Though the Pioneers have defeated all foes thus far, including previously undefeated Army, they will still be facing stiff competition in the weeks to come. Each victory will bring them closer to the top prize in fencing and also completely AN UNDEFEATED SEASON.

## MALE COLLEGE STUDENTS

Part Time Work designed so it will not interfere with your studies. Car necessary. \$40 weekly salary guaranteed. Can earn as much as \$120 per week with incentive Bonus. Call 488-6676 or 488-7676 for appointment to be interviewed. Call between 9:00 A.M. & 5:00 P.M.

BUSINESS MANAGER ..... DOUG BRYAN  
CARTOONIST ..... LESLIE OKMILANUK  
ADVISORY EDITOR ..... AL PECCI  
FACULTY ADVISOR ..... GRACE SOULLY  
STAFF ..... SALLY MAC DONALD, CAROL GRAZIOLA, PAT RATCLIFFE,  
MARY JEAN TONACHIO, YVETTE ECALL, GINGER KOSCEVZ  
ASSISTANT CARTOONIST ..... KAROL BENSON

from Paterson State College,  
Montclair State College, Jersey  
City State College, Newark  
State College, and Fairleigh  
Dickinson University.  
After thinking for ten min-

Art Lustig — Director of  
Camp Weequahic, Lakewood,  
Pa., will be on campus Thurs-  
day, Feb. 17, at 3:30 in room H109  
to show films of the camp and  
to interview interested stu-  
dents wishing counselling posi-  
tions.

Junior class primary election  
4:30 WRA Activities—Softball  
SGA Exec. Committee  
Friday, April 16  
Good Friday—No Classes

W-16  
Gym  
CC Conf.