

Illustration 2:
Earliest view of the original
building of the late 19th c.
Courtesy of William Paterson
College of New Jersey



Illustration 4:
Front elevation, Wentworth
Photograph 1929
Courtesy, William Paterson
College of New Jersey



Illustration 5:
"Living Room" Wentworth
photograph 1929
Courtesy, William Paterson
College of New Jersey



Illustration 3:
c. 1900 view of the MacCoughlough
property
Courtesy, William Paterson
College of New Jersey

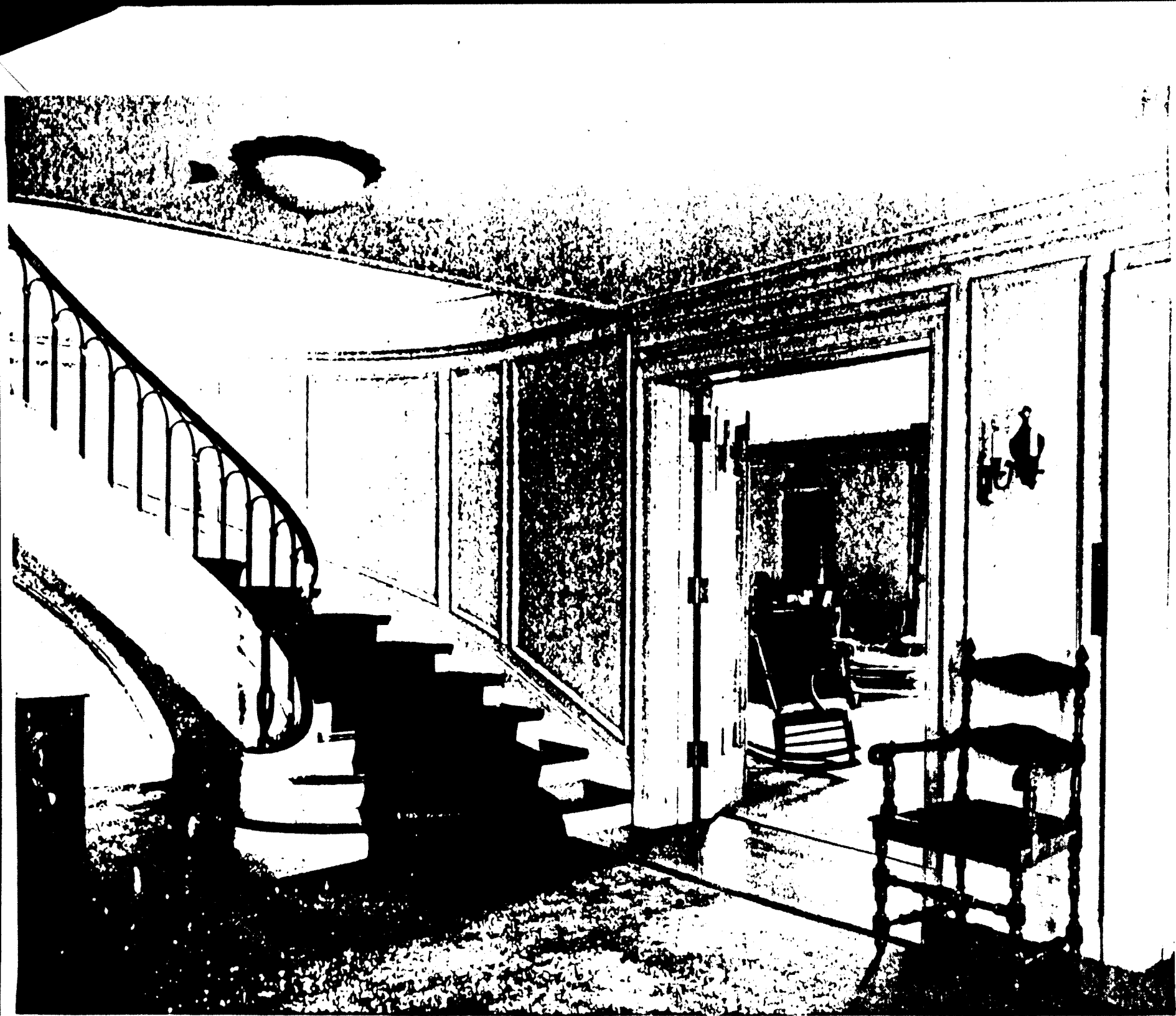
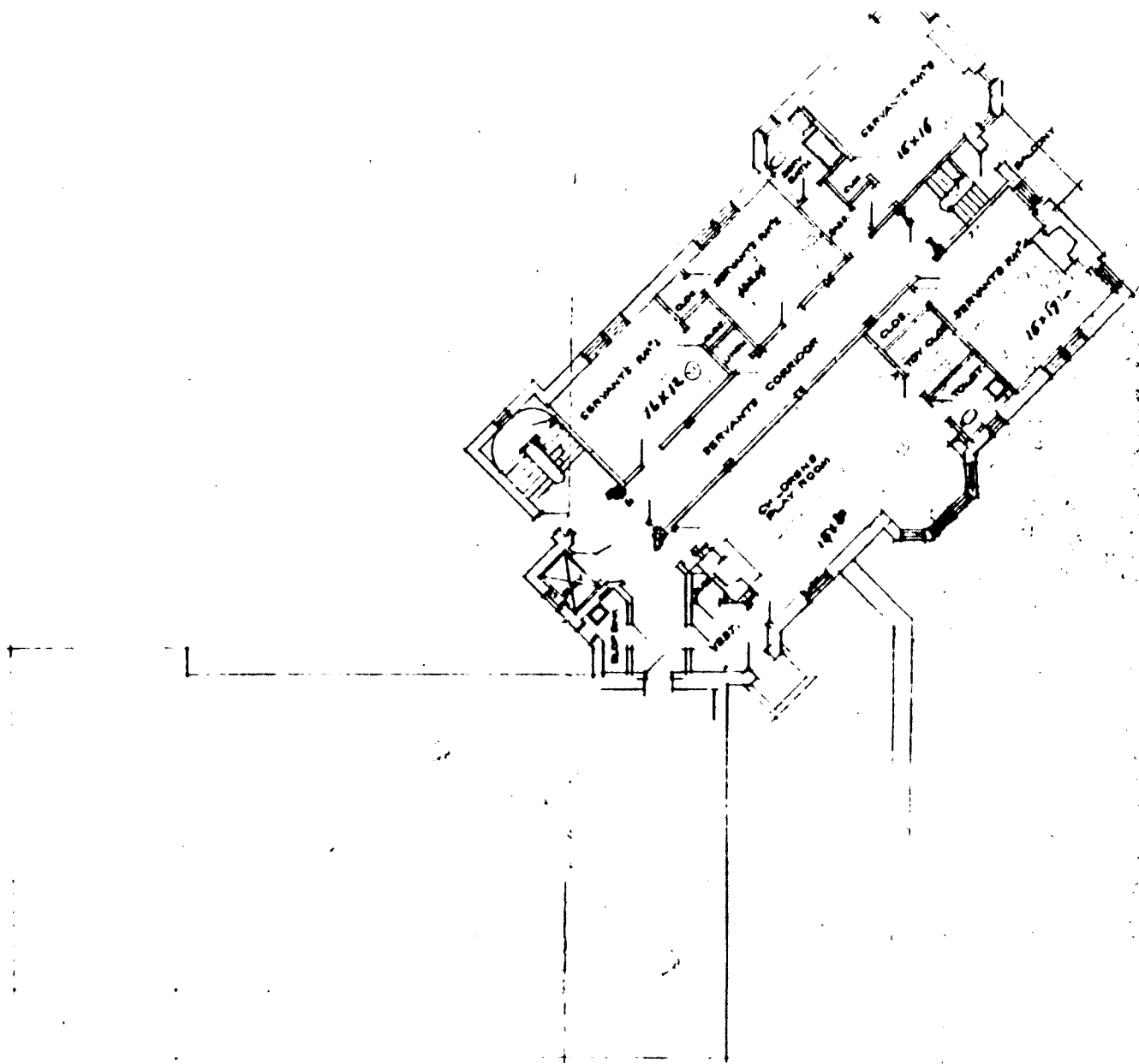


Illustration 6:
"Stair Hall," Wentworth
photograph 1929
Courtesy, William Paterson
College of New Jersey

Illustration 7:
"Dining Room,"
Wentworth
photograph 1929
Courtesy, William Paterson
College of New Jersey





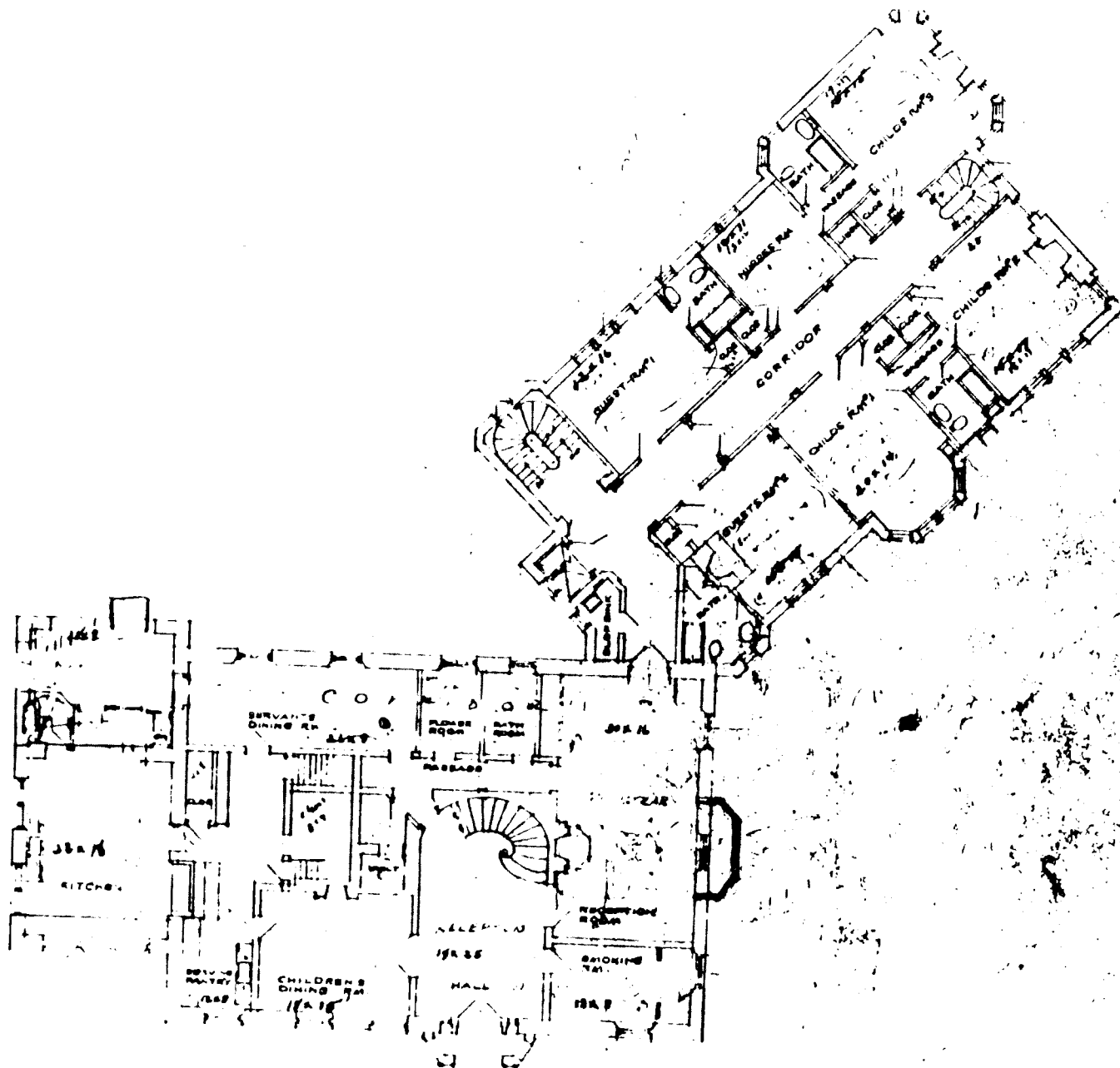
BASEMENT PLAN
SCALE 1/4"=1'-0"

PLAN OF HOBART'S RESIDENCE
NORTH HALEDON, N. J.

DRAW 4818
No. PR-1-C
DATE DEC 8 1948
LAWRENCE C. LITTLE
ARCHITECT
100 N. 10TH ST.
NEWARK, N. J.

LAWRENCE C. LITTLE
ARCHITECT
100 N. 10TH ST.
NEWARK, N. J.

Illustration 8:
Basement Plan of Hobart residence
undated
Courtesy, William Paterson
College of New Jersey



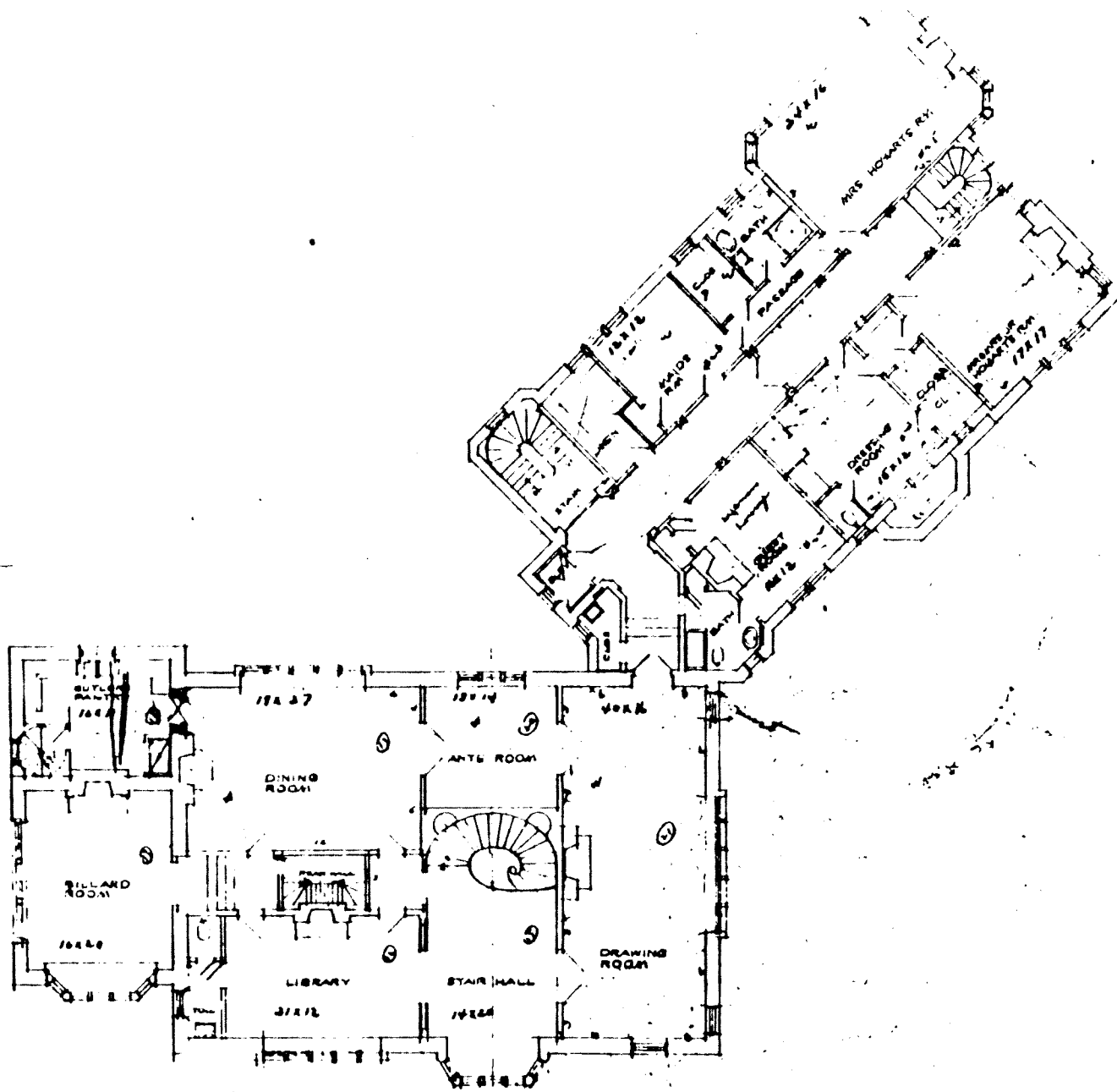
1ST FLOOR PLAN
SCALE 1/8" = 1'-0"

PLAN OF HOBART'S RESIDENCE
NORTH HALSDON N. J.

DRAW-4818
No. PR-2-C
DATE DEC 6 1944
SCALE 1/8" = 1'-0"
MAY 11 1945

LAWRENCE C. LICHT, A.I.A.
ARCHITECT
19 MILLER LARKER ROAD
ENGLWOOD N. J.

Illustration 9:
First Floor Plan, Hobart home
undated
Courtesy, William Paterson
College of New Jersey



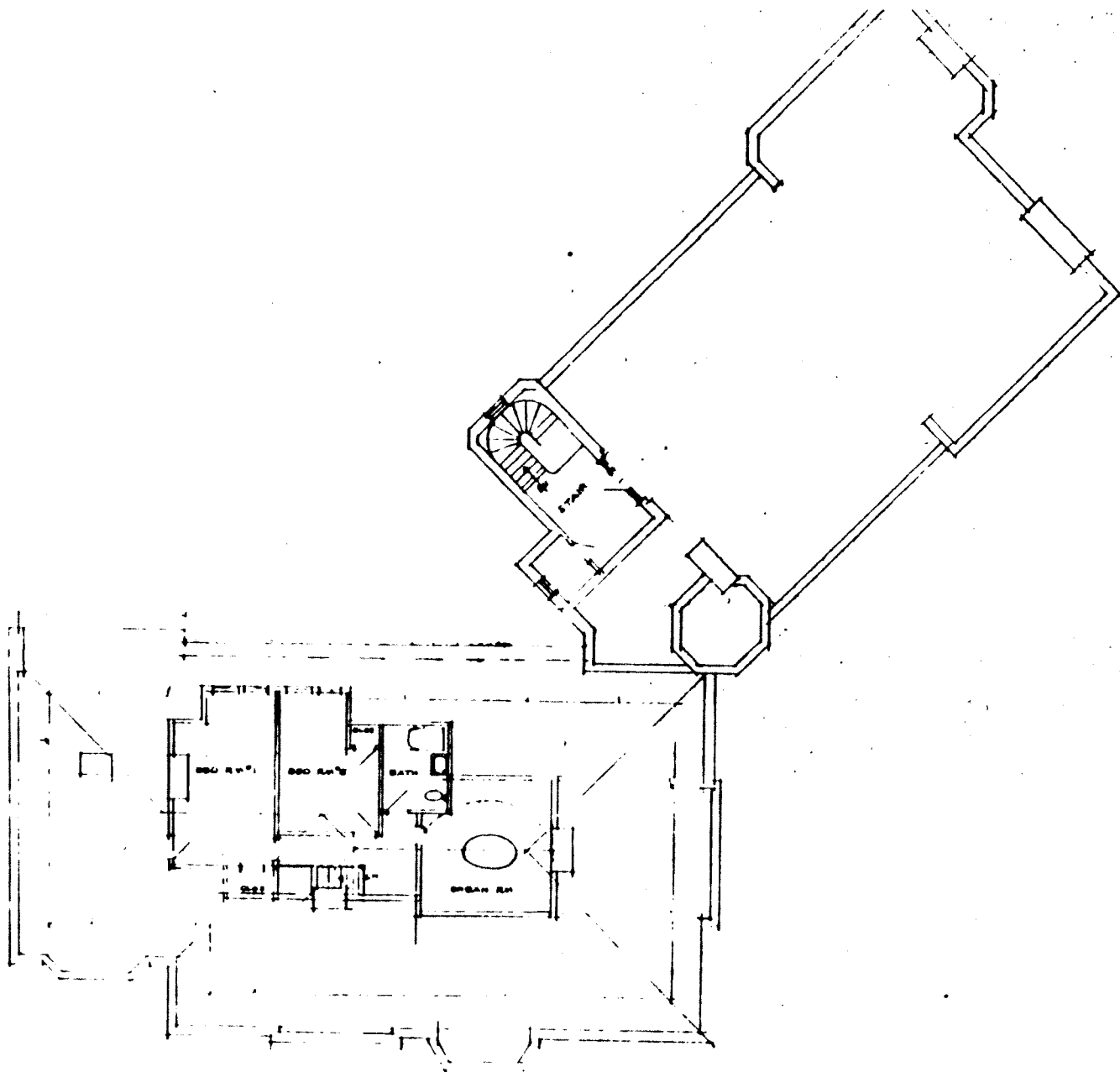
2nd FLOOR PLAN
 1646 1647 1648 1649 1650 1651 1652 1653 1654

PLAN OF HOBART'S RESIDENCE
 NORTH HALEDON, N. J.

DRAW-4818
 No PR-3-C
 DATE Dec. 1928
 SCALE 1/8" = 1'-0"
 DRAWN BY J. J. J.
 CHECKED

LAWRENCE C. LIGHT, A.D.
 ARCHITECT
 19 KNICKERBOCKER ROAD
 ENGLEWOOD, N. J.

Illustration 10:
 Second Floor Plan, Hobart home
 undated
 Courtesy, William Paterson
 College of New Jersey



ROOF PLAN
SCALE 1/8" = 1'-0"

PLAN OF HOBART'S RESIDENCE
NORTH HALDON N. J.

DRAW 4818
No. PR-1-C
DATE DEC 15 1914
SCALE 1/8" = 1'-0"
DRAWN BY P. V. J.
CHECKED

LAWRENCE C. LIGHT, A.E.
ARCHITECT
19 KNICKERBOCKER ROAD
ENGLEWOOD, N. J.

Illustration 11:
Attic/Roof Plan, Hobart Home
undated
Courtesy, William Paterson
College of New Jersey



Illustration 12:
Exterior Stonework Detail
NPI photograph 1988



Illustration 13:
Outline of Old Port Cochere in
Stonework
NPI photograph, 1988

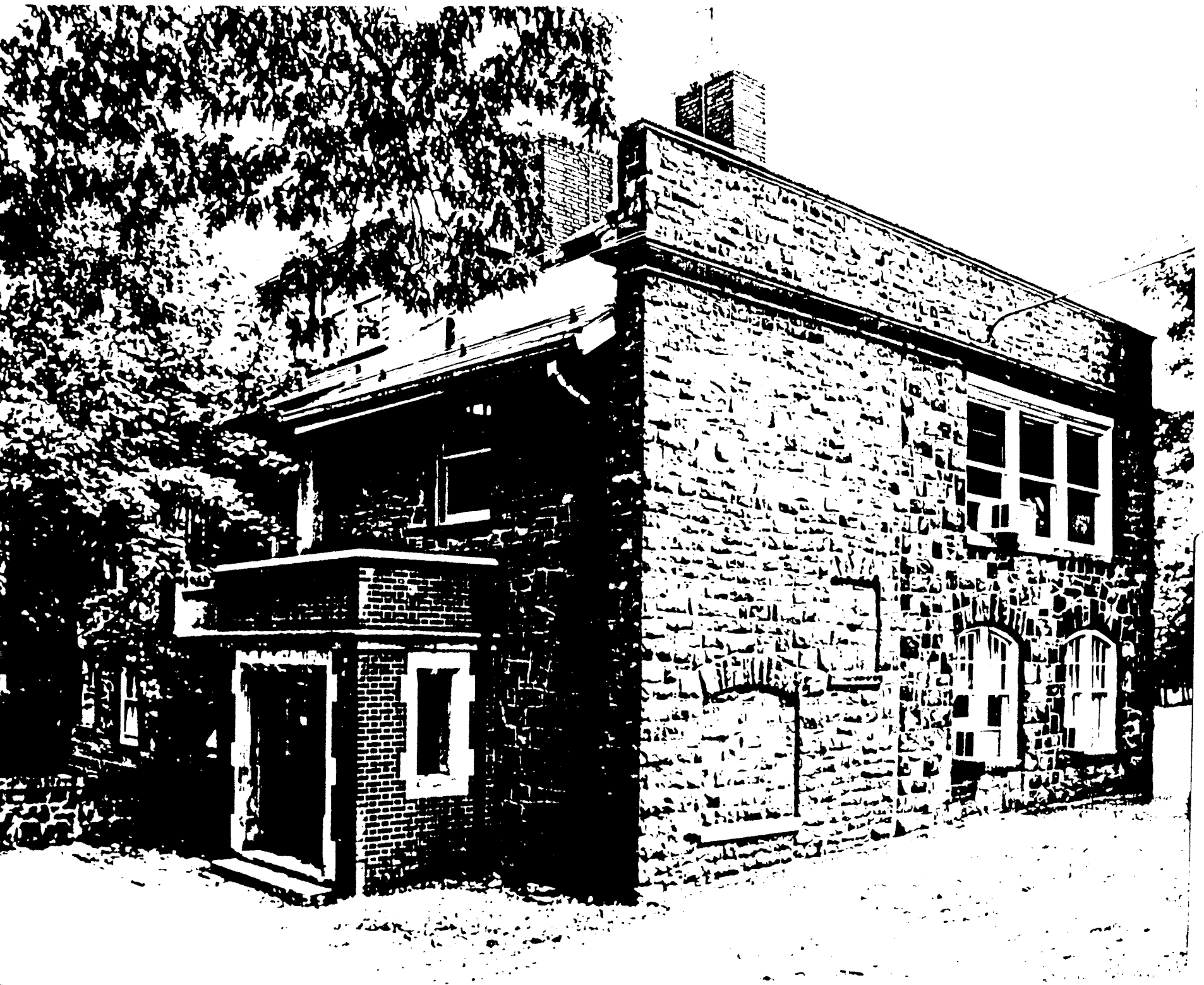


Illustration 14:
Sealed in windows
NPI photograph, 1988



Illustration 15:
Original Master Bedroom
NPI photograph, 1988



Illustration 16:
Original Master Bedroom
Wentworth photograph 1929
Courtesy, William Paterson
College of New Jersey

Illustration 17:
Original Library Moulding
& Plasterwork
NPI photograph 1988



Illustration 18:
Original Dining Room
NPI photograph 1988

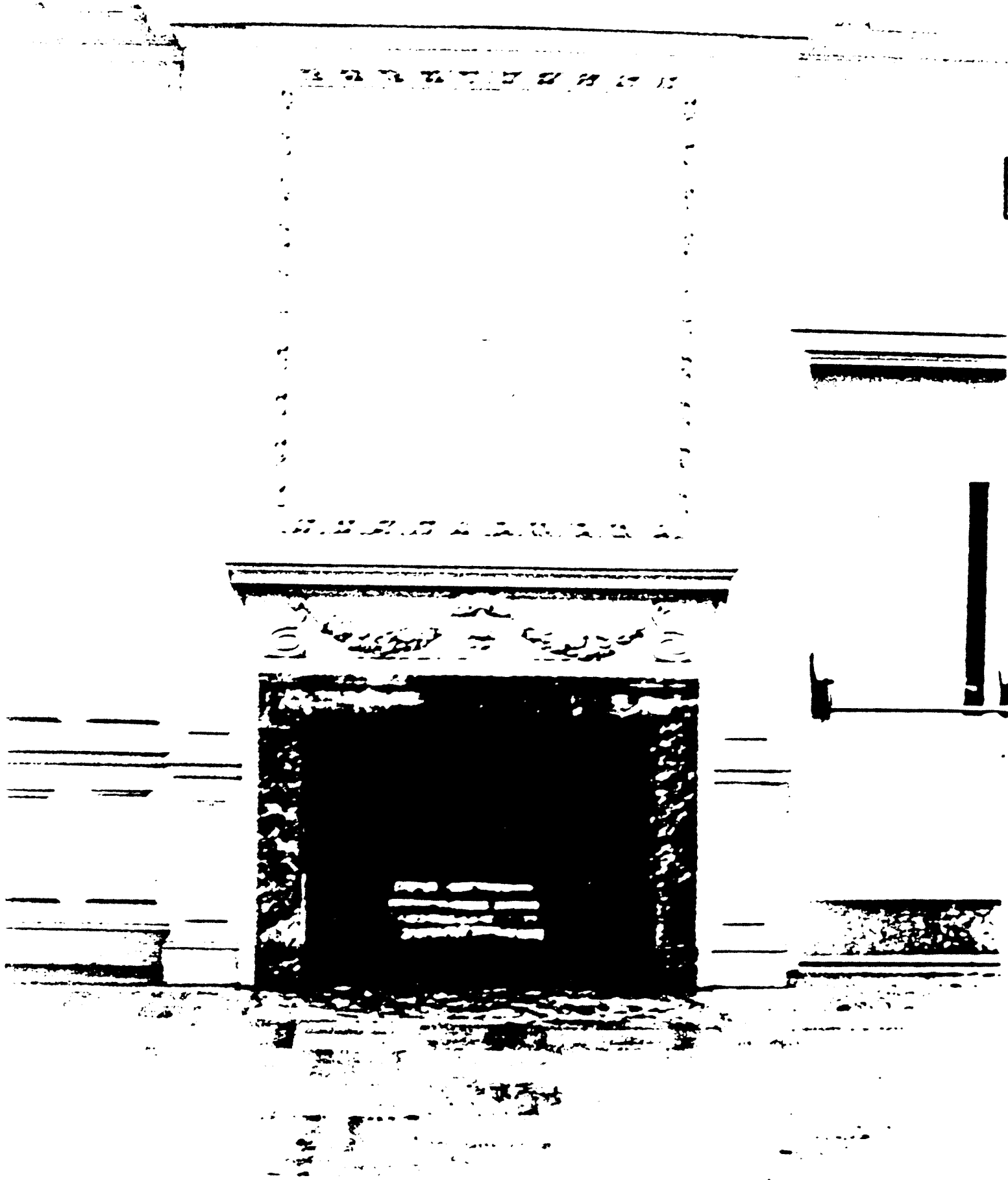


Illustration 19:
Original Wood Casement
Windows, Entrance Hall,
NPI Photograph 1988



Illustration 20:
Leaded Glass Casements,
Original Dining Room
NPI photograph 1988

