

# The Beacon

COPYRIGHT 1998 VOL. 62 NO. 26

MARCH 30, 1998

FREE  
25¢ outside of Passaic County

## Football coach reports missing gym equipment

Sherri Sage  
Staff Writer

On March 12, Head Football Coach Jack Peavey reported to Campus Police that a large amount of equipment had been stolen from the weight room in Wightman gym.

According to Peavey, the equipment was taken over a period of time. "We noticed little things starting to disappear," said Peavey.

When he discovered that over spring break some football blocking bags had been stolen, Peavey re-inventoried the weight room and reported all of the missing equipment.

The equipment stolen consists of six weight belts, twelve lifting straps, six sets of dumbbells, six curlbars, ten jumpropes, and five blocking dummies. These items are worth over \$1,000, said Peavey.

"The weight room is important to us because we have 70 players on campus lifting on a daily basis and we can't afford to be missing any equipment," Peavey said.

*"We're trying to make a conscious effort to protect what we have."*

*--*

**Football Head**

**Coach Jack Peavey**

The weight room is supervised by the coaches while the athletes are using it, so the equipment was being stolen off lifting times, Peavey said.

Previously, the weight room had been open to the police academy, maintenance, the physical education department, and the coaches with permission.

"There was multi-access to it," said Peavey. He said he believes that many people had keys to the room who should not have.

Currently, the locks have been

changed and there are only four or five keys that can open the weight room.

As a precautionary measure, the room can only be used by the police academy, the football team and the exercise movement class. It is off limits to everyone else.

"With limited keys, the weight room will be supervised by whoever unlocks it," Peavey said. "We're trying to make a conscious effort to protect what we have," he added.

According to Sergeant Anthony Fasolas, the investigation is still open. There are no suspects at this time.

Peavey said he has no clue who may have taken the equipment. "There was so much access to that room I wouldn't even guess," he said.

According to Fasolas, if someone is caught, he or she would be charged with theft and then have to go to court.

Peavey said he's hoping to get new equipment for the weight room. The money to pay for this will come out of the football play-

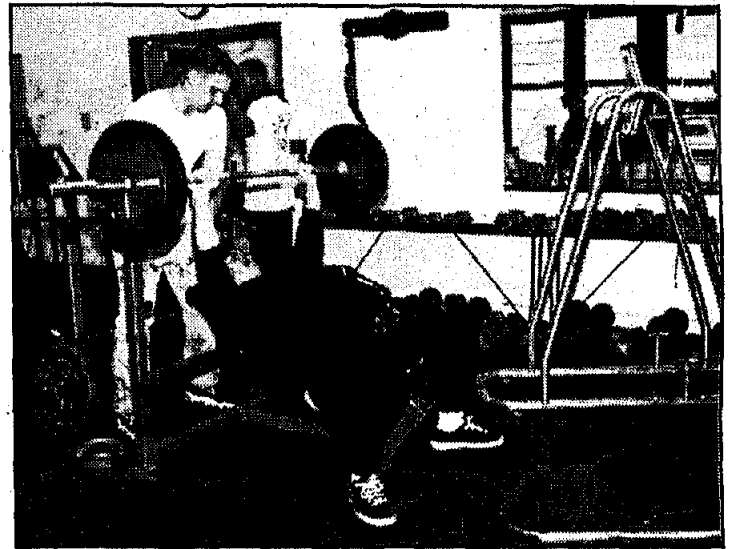


photo by Sylvana Meneses/The Beacon

Football Head Coach Jack Peavey reported to the Campus Police that equipment has been progressively dwindling. A total of over \$1,000 worth of equipment has been reported missing. Students who normally work out in the weight room of Wightman Gym have been utilizing all of the remaining equipment for their training.

ers' fundraising.

"My concern is that we have a very limited weight room now and we want to protect what's in there.

What little stuff we do have is very valuable to our football team," said Peavey.

## Latina Magazine publisher to speak at LINK opening

By Alexandra Donovski  
News Contributor

The new campus organization Business Latinos Initiating Networking Konnections (LINK), founded in 1997 by Roy Garcia, in hopes to create a link between William Paterson University students, and surrounding business professionals, is off to an successful start.

On April 2, Business LINK will hold its debut event, with inspirational keynote speaker, Christy Haubegger, president and publisher of Latina Magazine. She will be there as an inspiration to all students by sharing her story of success.

Garcia met Haubegger last year when he attended a National Business Conference in Texas. Haubegger also spoke there, and Garcia was able to convince her to speak at WPU.

Haubegger graduated from the University of Texas with a degree in philosophy, and then attended

Stanford Law School. She was the adopted Mexican daughter of two white parents, who emphasized the importance of her keeping her heritage.

Growing up she realized that she had few Hispanic role models in the media, and decided to for her own magazine dedicated to Hispanic women.

Latina Magazine has sold approximately 200,000 copies, and has participating advertisers such as The Gap, Honda, and Revlon.

The magazine offers what many other women's magazines do, except that it is geared toward women like Haubegger, giving the Hispanic youth Hispanic role models.

However, she is just one of the many distinguished speakers attending this event. The director of Public Relations and the director of Human Resources from Wayne General Hospital will also

see LATINA page 3

## Conference to focus on Holocaust literature

By Robyn J. Caputo  
Staff Writer

During the reign of Nazi Germany, more than five million Jewish people were killed, documenting one of the largest mass destructions in history.

On Friday, April 3, William Paterson University will be holding a Holocaust Conference open to teachers and librarians in the community to help them teach their students about these tragic events which took place during the Holocaust.

This year's theme for this annual conference will be, "Teaching About the Holocaust and

Genocide Through Literature." At 9 a.m., Dr. Paul Winkler, the executive director of New Jersey Holocaust Education Commission, established in 1991, will deliver the keynote speech. "Using Literature to Fulfill the Mandate of the Commission."

In April of 1994, the Genocide Mandate bill was made into a law. Signed by Governor Christine Todd Whitman, the law states that school children from kindergarten through grade 12 must be taught about genocide and the Holocaust.

This year's conference is being sponsored by the Holocaust Advisory Committee on campus, as well as the center for

Continuing Education and Distance Learning, the New Jersey Commission of Holocaust Education, Office of the Provost, the Student Government Association, Hillel, and the Departments of Sociology and History.

Most of the planning was done by the Holocaust Advisory Committee, especially coordinator Fran Novick, also a librarian at WPU, along with Dr. Peter Stein of the Sociology Department.

Stein noted, "I feel it is important because we have to learn about mistakes on the past so we

see HOLOCAUST page 11

## Admissions policy under revision

By Rebecca Green  
News Contributor

The Office of Admissions has recently revised the William Paterson University application for admission, and beginning in the spring 1998 semester, the applications will include an essay on a "significant personal experience" or a specific topic of interest, along with a new section to list high school activities.

"We have added non-academic information, things that look at community service, and service to the school," said Leo DeBartolo,

director of Admissions. "We need more information from students in the grey area." Students' history of commitment to the school and outside the school can be seen through listing high school activities.

"We should look at something more flexible, total high school academic history, transfer history, and activities," said Norville.

"By adding the essay it gives students the opportunity to tell about themselves, get a better idea of their creativity, and the process of admission is taken more seriously. The essay sheds new light

on the candidate's admission picture," she added.

The Faculty Senate Committee has been reviewing WPU's policies on expungement, probation, repeat, and readmission. They believe that tightening up on these policies will make a difference.

The changes have occurred, "because you have to do that in order to remain competitive to institutions around you," said DeBartolo. "We compete directly with Montclair and Rutgers," he added.

see ADMISSIONS page 11

# OPEN TRYOUTS!

## FOR WPUNJ CHEERLEADING

- Our Squad is Currently Ranked 11th in the Nation.
- We Compete both Locally and Nationally.
- Have a Chance to Compete in Orlando, Florida.
- Be a Part of a Winning Tradition.

**"We are a Co-Ed squad"**  
**MEN + WOMEN are encouraged to tryout!**

Tryout Dates: April 6th-9th  
 Times: 6:00-9:30pm  
 Where: Wightman Gym



## ✓ CHECK THIS OUT! ✓

- ✓ Do you like working with children?
- ✓ Do you enjoy being outdoors?
- ✓ Are you looking for a fun working environment?

Make the difference in a child's life and add valuable field experience to your resume.  
 What a great way to spend a summer!

Many exciting positions are available for energetic and enthusiastic individuals. Great for coaches and all majors especially education, psychology, sociology, and art. Call us for more information and to make an appointment.

## RAMAPO COUNTRY DAY CAMP

914-356-4636

WE WILL BE IN THE STUDENT CENTER.

TUES. APRIL 15th

Come See What We Have To Offer

Additional information and application available in Career Services

## Campus Calendar

Monday, March 30

Career Development Center- Resume Writing  
 Morrison Hall Room 146, 5 to 6:30 pm. Call ext. 2281, 2282, 2440 for info.

Wednesday, April 1

Catholic Campus Ministry- Join us for our faith sharing group- a time for prayer, scripture, and personal experiences of God. 6 p.m. Student Center Room 302. Contact Joanne x3524 or (973) 595-6184.

Thursday, April 2

Feminist Collective- General meeting All Welcome! TAKE BACK THE NIGHT to be discussed. Student Center 304, Common Hour. Contact MEZZY (973) 720-4302.

Business L.I.N.K.- Presents President and Publisher of Latina Magazine, Christy Haubegger. Student Center Ballroom 12 p.m. Contact Linda x5029.

Spanish Club- School of Folkloric Danza of Colombia. 12 p.m. Student Center Ballroom. Contact Linda x5029.

## the Beacon

A NEWSPAPER THAT'S CLEARLY FOR YOU

Norman C. DeFilippo  
 Editor-In-Chief

Pamela Langan  
 News Editor

Matthew Halpern  
 Business Manager

Ed Erlenmeyer  
 Insider Editor

Chris Castillo  
 Information Coordinator

Tim Bornemann  
 Assistant Insider Editor

Raechel Heffers  
 Advertising Representative

Sylvana Meneses  
 Photo Editor

Michael S. Fox  
 Circulation Director

Michael S. Laclair  
 Sports Editor

George Robb  
 Academic Adviser

Robyn J. Caputo  
 Al Giamarino

Financial Services  
 Provided By

Dave Roe  
 Sherri Sage  
 Staff Writers

Charlotte O'Brien  
 Barbara Stomber

Carolyn Fuge  
 Staff Photographer

The Beacon is published on Monday and serves Haledon, North Haledon, Wayne and the William Paterson University Campus Community. Business/Editorial offices are located on the campus of William Paterson University in the Student Center, Room 310, Wayne, NJ 07470-973-720-2248. The Beacon receives no money from WPU or its student body and therefore relies solely on advertising revenue to operate.

# Campus Girl Scouts do more than sell cookies

Matthew Halpern  
 Staff Writer

The equation is simple: when most people think of Girl Scouts, they think of Girl Scout Cookies (mainly the Thin Mints). Girl Scouting is more than just selling cookies; it is an arena where young girls can learn the leadership, relational, service, and survival skills to be productive members of society.

What happens though is that many girls drop the program in the junior years, when they are in fourth, fifth or sixth grade. These girls need encouragement to remain a Girl Scout, and see all the program can offer them. This is just one of the functions of the Campus Girl Scouts.

Started at William Paterson University in 1997 by Dana Romatowski, president, the Campus Girl Scouts program is designed to continue the efforts of the Girl Scouts program on a college level. Members are leaders and examples for younger Girl Scouts, trying to provide them with understanding for what their work can lead to.

"Our purpose is to extend volunteerism and leadership opportunities to the college community," said Romatowski. "We run programs on campus for the college and Girl Scouts communities to promote different things."

According to Romatowski, the organization's first big project is a workshop on multiculturalism for Brownie girls, who are in first, second or third grade. This and future



The WPU Campus Girl Scouts are currently recruiting new members to help in their community service projects. They have been planning many events for the year.

programs not only provide the Campus Girl Scouts members with a sense of leading and accomplishment, but the Brownie and Girl Scouts earn their requirements for badges that allow the girls to move up the Girl Scouts ladder.

Though only in its first year, Campus Girl Scouts has set high goals for themselves. The successful completion of their Multicultural Program is only one, and Romatowski notes that other programs are upcoming, which may be of interest to the university community.

Through mid-April, Girl Scouts cookies will be on sale in the Student Center Lobby.

This money will go toward a scholarship grant, which Romatowski hopes will be given to girls who graduate from New Jersey councils and come to WPU. Also in the works is a Stress Management seminar, where Romatowski and her club members will provide information to high school age girls about a variety of ways of dealing with pressure, including massage therapy.

"Right now, we are in the process of putting up a web page, hopefully through the university web site, and we are working on a newsletter," said Romatowski. "The newsletter will feature information about what goals, activities and purposes we have."

We want to let the college community know we're here."

The Campus Girl Scouts program at WPU is organized through the Leni-Lenape Council. The council works with Campus Girl Scouts to ensure programs for younger girls to follow the set structure of the program, said Romatowski, and to make sure Campus Girl Scouts have a place to turn when questions arise.

"The council helps us plan programs, and provides us with guidance and training for extra programs," said Romatowski.

Currently, the six Campus Girl Scouts groups in New Jersey are in the process of networking with each other to share ideas and information. Romatowski hopes that this network will help to increase the number of Campus Girl Scouts in New Jersey, and in the country.

"We want to promote the school as a place with Campus Girl Scouts, where they know people with the same interests and feel comfortable," Romatowski said.

Campus Girl Scouts is the forum where Girl Scouts can put the skills and talents acquired in previous years of training to use for the benefit of other Girl Scouts. These are girls who are learning leadership skills that will allow them to reach new heights, said Romatowski.

"With the leadership skills learned in scouting, girls can take the initiative to do anything," she concluded.

# Lambda Theta Alpha creates scholarship specifically for WPU students

By Pamela Langan  
 News Editor

The William Paterson University chapter of Lambda Theta Alpha, the first Latina sorority in the nation, has been working hard since last year to raise money for the National Hispanic Scholarship Fund (NHSF) which is guaranteed to benefit at least one student from WPU.

In their second attempt to raise enough money for the scholarship, the sorority of now 13 members, will be holding its First Annual Scholarship Brunch on Sunday, April 26 in the Pioneer Restaurant, located on the second floor of the Student Center.

Established in 1975 at Kean University, Lambda Theta Alpha is "an academic community service based sorority providing an outlet for young Latinas." According to Treasurer Bobi Lee Messer, they created a scholarship with the NHSF which will benefit at least one student from WPU.

The scholarship is available nationwide, and all students are encouraged to apply for it. According to Messer, the lack of opportunities for students of Latin descent is the reason that her sorority is trying to help out fellow WPU students to eliminate finan-

cial burdens.

"We want it where every year at least one WPU student will get one," said Messer. "Without education, the Latin community won't progress," she added.

However, Lambda Theta Alpha has had difficulty raising enough money for the scholarship, which Messer stated they would like to raise to at least one \$500 scholarship. Previously, they tried to hold the brunch on February 15, but they decided to postpone the event to raise more money and get a larger attendance.

Currently, they have raised \$195. "It's slow rolling," said Messer.

A large portion of the money has been donated from the History and English Departments of WPU, and many individuals who donated money aren't even planning to attend the brunch.

The ticket prices for the brunch are \$15 for students, and \$20 for all others. The money raised from the brunch will be added to the current scholarship amount.

Application forms will be distributed from August 3 to October 9, and the scholarship will be effective for the spring 1999 semester.

In addition to the food and service on April 26, the group is hop-

ing to bring one of Lambda Theta Alpha's founding mothers to speak about the importance of the sorority and its effect on the community.

"It's a remembrance of why we were created," said Messer.

In other attempts to raise money for the scholarship, the sisters are planning to have a letter writing

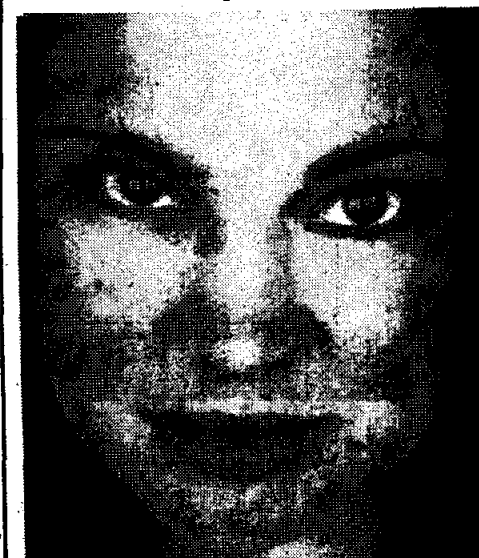
campaign to Hispanic based businesses in the area, in hopes to solicit money just for the WPU scholarship, and not the entire NHSF.

For those interested in applying for this scholarship, contact Messer at 720-2739, or send any requests to the Student

Government Association and mark attention to Messer and Lambda Theta Alpha.

"In recognition of those who paved the way so that young ladies such as ourselves could afford a college education, we would like to help pave the way for another," said Messer.

# Latina publisher to speak on Thursday



Christy Haubegger

from LATINA page 1

be speaking, as well as the senior vice president of Valley National Bank.

Garcia hopes many students will attend, dressed appropriately, and bringing with them their resumes and cover letters. Garcia and the other 25 members of Business LINK wish that WPU students don't pass up this opportunity.

At the event, "there will be essential people for students to meet," said Garcia. There will also be internship opportunities available to WPU stu-

dents from Latina, and other businesses.

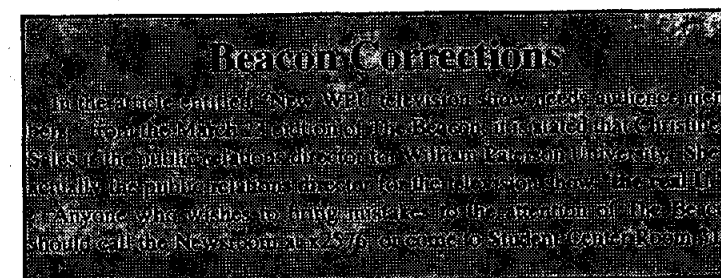
As the founding father of Business LINK, Garcia realizes that many people will be apprehensive to attend because of the organization's title. However, he remarks, "Don't stop at the label, opportunities are colorful."

Garcia's idea for this club came from his distress over the limited opportunities available to many talented Latinos, but he wants to unite the students and provide great possibilities for every student, and "give back to the community," he said.

Garcia added, "you can't have business with just one race." He would like to express that the door of opportunity is open for all students of all races, especially on April 2.

The event will be held in the Student Center Ballroom and begins at 12:30 p.m. Business LINK encourages all to attend to hear the speakers and see the Folklore Music and Dance of Colombia group, and to sample the selection of Colombian dishes that will be served for lunch. There will be a fee of \$2 for students and \$3 for faculty.

This new organization has received a lot of support from the school administration and all the members are excited about this. Business LINK hopes to, "provide culture, inspiration, and opportunity," and invites everyone to take part in the event.





# Opinions & Review

## The Beacon

### EDITORIAL BOARD

Pamela Langan • News Editor  
Ed Erlenmeyer • Insider Editor  
Tim Bornemann • Assistant Insider Editor  
Michael S. Laclair • Sports Editor  
Sylvana Meneses • Photo Editor

Norman C. De Filippo  
Editor-in-Chief

## Mailbag

### Join us as we open Holy Week '98

#### To the Editor:

First of all I would like to thank all of you who are participating in the annual "Shelter the Homeless" collection, on behalf of Youth Haven & Eva's Shelter, Paterson. I would like to invite you to participate in our annual "Walk-A-thon" April 16. Forms are available at the CCM Center or give us a call at x3524.

Each year Catholic Campus Ministry invites the Gospel Choir of Our Lady of Victories Parish, Paterson to our Palm Sunday

Celebration. These friends bring a great spirit of rejoicing and celebration to our campus. I would like to, therefore, invite all of you to the Palm Sunday celebration, Sunday, April 5, 7:30 p.m., in the Performing Arts Lounge of the Student Center. Join us as we open Holy Week '98.

Our other Holy Week events include: Holy Thursday Mass, 12:30 p.m., commemorating the Last Supper of Jesus, on Thursday, April 9 at 12:30 p.m., at the CCMC. Good Friday Service

Continued on page 5

## Commentary

### Will you make the choice to learn

**Alexandra Donovski** In response to last week's

Editorial "What does it mean to 'Kill Kenny?'" basically summing up the lack of student's eagerness to learn, I feel that appropriately gathered the atmosphere on campus. If you walk around this campus, the most frequently asked question probably is, "what did you get on that paper [or test]?" The answers come varying from student to student, but is the answer really important?

We are simply asking what grade one attained from the professor, but not how much one has learned. Learning on this campus seems irrelevant, in comparison to

the all important extra curricular activities that so many have, and I'm not just talking about organizations, or sports. As registration is now around the corner, we ask our friends for advice about certain professors, and it seems that there are three categories: The easy (fluff) professors, the ones where one is actually forced into LEARNING something (or-failing), and the boring professor, that repeatedly drills the answer into your head, (making it almost impossible not to get an A).

But which one will YOU chose in the following weeks?

Alexandra Donovski is a junior and news contributor at The Beacon.

## Six in one; half-a-dozen in the other

Numbers can be overwhelming, but statistics can be downright scary. When a television news reporter regurgitates the smallest spoonful of statistics it can be enough to make a grown man cry.

There are simply too many questions one has to ask one's self in a short amount of time in order to give the statistics any meaning. And if the proper attention is not paid to statistics one can easily be misled.

First and foremost, one must ask one's self, who has gathered the statistics? Second, was it by an impartial group capable of gathering accurate data? And third, in the case of comparing statistics, are the same type of statistics being compared?

For a case in point, once again, we need look no further than William Paterson University. For instance, on March 20 WPU President Arnold Speert sent out a memo explaining his displeasure with an article "that spoke about the decline in applications for fall semester admissions at William Paterson University." The memo went on to state that the article in *The Record*, "did not present a comprehensive picture of our enrollment numbers, so [he] would like to take this opportunity to set the record straight."

But is this a person who's statistics we should trust? Speert has been president of WPU for quite some time and has an admirable reputation; however, he clearly holds a stake in the matter at hand. Thus, to accept what he says blindly would be just

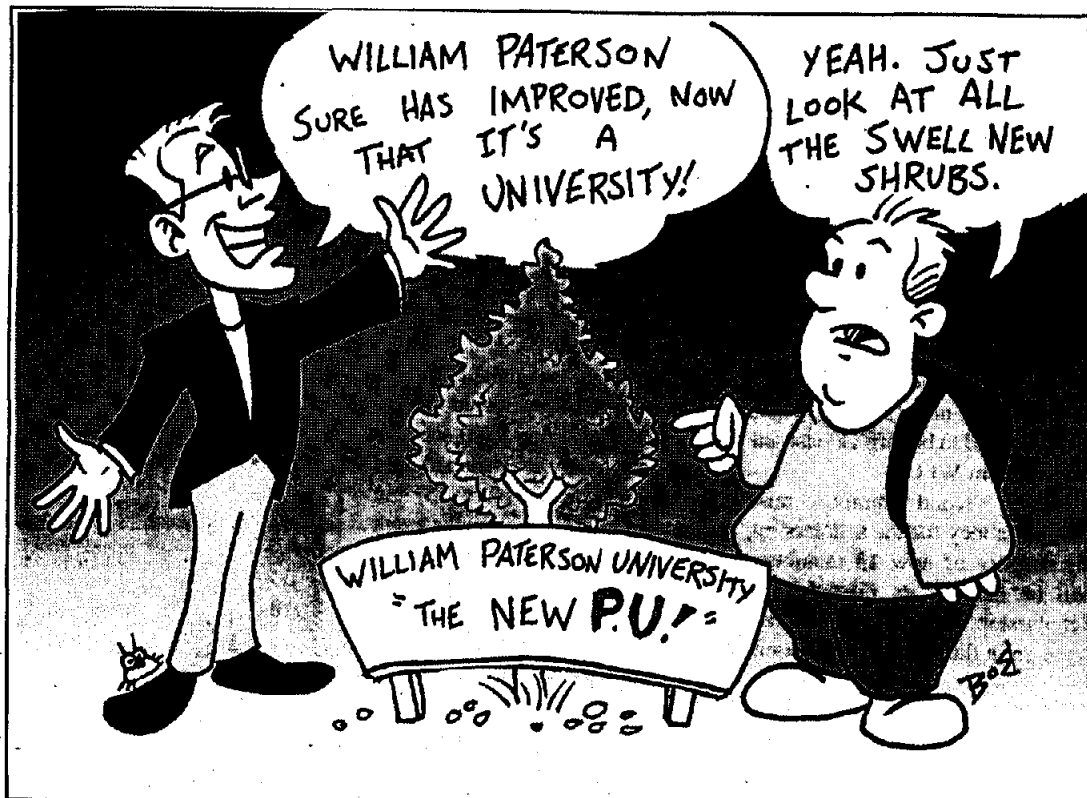
as bad, if not worse, than accepting without a second thought what the *Record* wrote.

Speert begins by saying the, "overall applications for fall 1998 entering class are approximately 9% below last year." But he then states that the fall 1997 enrolled freshman class was our largest in the past four years.

So far, one can conclude that although WPU has 9% decrease in applications from last year, WPU still has more applications than two years ago. Speert even goes on to say that at this point last year WPU had received fewer applications than it presently has this year.

But what about the "quality" of the students? Speert said in the memo that last year's "Fall freshmen included a record number of scholars whose CSAT scores ranged between 1250 and 1440." It is a very impressive fact; however, Speert neglects to say anything in his memo about the "quality" of applicants for the fall 1998 semester. After all, it is not only the quantity of applicants, but the quality as well.

If one needs proof of this, he/she need look no further than the *William Paterson University 1997-1998 Fact Book*. It shows that in 1995, a total of 5,460 full-time first-time Freshmen applied; but only 855 were enrolled. Where as in 1997, a total of 5,100 full-time first-time freshmen applied, (nearly 500 less than 1995) 1033 were accepted (nearly 200 more than in 1995).



## Just Bitter

### The philosophy of existentialism in action; or, taking a risk in a bar

**Robyn J. Caputo** Okay, here's a scenario for you: across a crowded room, you make eye contact with this incredible looking guy, he looks back and gives you a smile. So far, you're thinking "this is cool," but what now? He hasn't moved closer to you, does he want you to make the first move? What do you do ace?

Are you willing to take that risk? "Risk," it's a big scary word. But what does it really mean to take a risk? I mean, aren't we really using it as another word for fear? What are you afraid of? Rejection? Humiliation? Possibly

blowing the one chance you may ever have? Okay, well when you put it that way, yeah it really is scary. But sooner or later we all need to face our fears and take these risks. We have everything to gain, but sometimes a lot to lose, unless it's already lost. Am I confusing you? Let me explain with another scenario.

You have been in a relationship with this person for two years, and something tells you he can't do it anymore. Done, Kaput, kaplooeey, (is that a real word)? You get the picture. Now what? Now, all of the sudden it becomes a risk for you to call this person. And I'm not talking about calling

and then hanging up, I mean actually calling and having a conversation with them. This is a risk! The person you fell in love with is now a risk to talk to! Doesn't this all sound ridiculous? Of course it does, but you know as well as I do, that it's true! So, what do you do? Are you willing to risk rejection and humiliation once more? Ugh! It's enough to drive a person completely mad! Does it seem like I have gone off on a tangent because it feels like I have?

So, getting back to my point, risks can be a good thing. When the adrenaline is pumping and the heart is thumping, one can't help

but feel exhilarated by the thrill of the chase. We are all animals, and by nature, animals need to hunt and be hunted. Either lurking in shadows, (a.k.a. a dark noisy club) or out in the sunshine, (a.k.a. on campus) we are constantly stalking our prey. Risks are good for the soul, and as a wise man once told me, "what does not kill us, only makes us stronger," (that is unless in the process of trying to kill us it has completely maimed us, that would be a bad thing). But otherwise, it can only help us. Risks help us to live fuller lives, and leaves us with answers instead of questions. You know what did

happen, instead of always wondering, "what if ..."

So, you mosey on over to that incredible guy across the room, give him your most flirtatious smile and say, "Hey, do you want to dance?" If he says no, you just go back to the bar, do a few more shots of Mad Jack, and wait for the next guy to catch your eye. But if he says yes, well, you can just imagine the possibilities. So, go ahead, and take that risk, no matter what it is. I dare you, as a matter of fact, I double dare you!

Robyn Caputo is a Beacon staff writer.

## Holy Week '98

the Easter Vigil, Saturday, April 11 at 7:30 p.m., featuring the Baptism of Sara Evans, a WPU student, who has been preparing with eight other students in the Rite of Initiation of Adults, for Confirmation. Join us at the Easter Vigil also at the Catholic Campus Ministry Center.

The students preparing for Confirmation will receive the sacrament at our annual Communion Breakfast Mass, Sunday, April 26 at 9:30 a.m., followed by Breakfast at La Neve's Restaurant, Haledon. Give us a call for more information on this event! Call x3524.

continued

The "Shelter the Homeless" collection results will be announced and presented to the agencies on May 3, 1998 at the CCM Center, 7:30 p.m., Once again ...the WPU community is more than welcome to attend at "your home away from home", the CCM Center!

Father Lou Scurti  
Catholic Campus Minister

## Students' parking is out of control

#### To the Editor:

On March 23, Dr. Bonita Evans, an adjunct was given a fine of \$20 for parking in a reserved parking space. "I parked there on purpose," Evans says. "It's about time someone publicly protested the students stealing our parking spaces." Evans says she has a class on Monday nights at 4:15 p.m., but is now forced to arrive at the university by 2 p.m. in order to find a parking space near the Atrium. If she arrives later than two o'clock, she may, if she is lucky, find a parking space at entrance one, to which she will have to walk, when she finishes her class at 7 p.m.

Two weeks ago, Evans was about to pull into an unreserved faculty/staff parking space, when a student pulled up in front of her and blocked her way. "When I asked her which course she taught

"she replied, 'I'm not a teacher, I'm a student.' When Evans asked her to leave, the student said, 'All right, all right, you don't have to get hostile.'"

Two weeks previous to this incident, Evans said that what appeared to be a freshman student, pulled his car into a parking space reserved for the department chair. "I asked him which department he was chairing, and he said he was a student. I then asked him to move out of the parking space." Evans protests the fact that faculty/staff parking spaces are being used by students, who claim that they are late for classes. In the meantime she is left wandering around and around a parking lot, while 25-30 students wait for her. "To add insult to injury, I got slapped with a \$20 fine."

Do students realize that the campus police keep a record of

## Making a collective effort to take back the night

#### To the Editor:

It is again that time of year for the annual Take Back the Night march. We are sending this memo encouraging the campus community to support and perhaps participate in this rally against ALL forms of sexual violence. The students of the Feminist Collective, as well as supporting students and professors, ask you to open your minds and your hearts to help fight against oppression. Not only is William Paterson University a reflection of our society but changes made on this campus can effect society.

On April 14, 1998, at approximately 7:00 p.m. students will be gathering outside the student center for a rally and march that will follow. At the rally, we offer a venue for teachers, students, parents, children, and anyone who feels the need to speak out against the occurrence of sexual violence in our everyday lives, and in our society. With such startling statistics as rape affecting 1 in 3 women, there is no room for ignorance. Following the rally, the participants will gather in the Student Center Performing Arts Lounge in the Student Center for a rap session in which personal experience, feelings, angers, and other emotional

outstanding tickets? If these are not paid, it could be a determinant as to whether they receive their diploma or not.

Dr. Bonita Evans  
History adjunct

## Mailbag

Continued

are discussed. This is usually a very emotional place for survivors and friends of survivors. This is where a safe space is made available to the participants to unload what they are feeling and thinking.

We, the feminist collective, urge you to tell your students, friends, and colleagues to come and support and take part in this very important event. This is how the Feminist Collective actively reaches out to help survivors of sexual violence. There may be

people who you work with or students in your class room in need of a place to vent. Your spreading the word can help us help others to end the silence.

If you have any questions or comments please call me at either (973)-720-4302 or (973)-720-2022. Thank you for your attention.

Marry E. Zappo  
Feminist Collective Vice President

## The William Paterson University English Department INVITES SUBMISSIONS

for its annual

### English Department Writing Awards

honoring excellence in three categories:

- I. Poetry
- II. Fiction or Creative Non-Fiction
- III. Critical Writing

The Awards are open to all currently enrolled undergraduates. An honorarium of \$75.00 will be awarded for each category. Honorary mentions will also be acknowledged.

Deadline: Friday, April 3, 1998

in the English Department Office, Atrium 216

Submission Guidelines: Each entry must be titled and submitted in a sealed envelope. Please specify which category you are entering. The manuscript should be anonymous; it should not carry the name of the writer or any other identification. Instead, the sealed envelope should be accompanied by a 3x5 index card with the entrant's name, address and telephone number. Attach the card to the outside of the sealed envelope. Each entrant is permitted a maximum of one entry per category (poetry entries should consist of 3-5 poems).

## NEWS FROM THE OFFICE OF INSTITUTIONAL ADVANCEMENT

### The William Paterson University Foundation Q & A

#### What is the foundation?

The William Paterson University Foundation is the private sector fundraising arm of the University. The Foundation encourages individuals, corporations and philanthropic foundations to create a margin of excellence through charitable contributions that advance University initiatives for academic excellence and student success. The Foundation exists to work with faculty and staff in developing proposals appropriate for private sector funding.

#### How is it governed?

A volunteer board of directors of community, corporate and University leaders give direction to the Foundation. President Arnold Speert and Fred Gruel, chair of the University's board of trustees, are on the Foundation board. Fletcher Fish, former chair of the board of directors of the Wayne Chamber Orchestra, is chair of the Foundation; Richard Reiss, vice president for institutional advancement, is executive director. Seventeen members currently serve on the board of directors. Future plans call to expand the membership to include more corporate, community, alumni and University representation.

#### Is this a new organization?

Yes and no. The Foundation was established by William Paterson's board of trustees in 1983. Its original responsibilities included administering the Student and Recreation Centers and the bookstore, and overseeing food services. Today, however, the Foundation is purely a fundraising organization. Its projects include the Legacy Awards Dinner, Distinguished Lecturer Series, Pioneer Athletic Club, scholarship programs, Wayne Chamber Orchestra and other priority needs as they arise. The Foundation also has a fiduciary responsibility to manage its assets wisely. Its current holdings are slightly more than \$1.2 million.

#### Who are the fundraisers?

Fundraising is a joint effort among the offices of Institutional Advancement who work in collaboration with faculty, staff and administration. The most recent addition to the team is Steve Laruccia, Ph.D., director of development. Dr. Laruccia, along with Lysa Martinelli and Audrey Bonaparte, alumni relations; Dennis Santillo, external relations; Connie Alexis-Laona, annual fund; Sue Semegram, systems and research; Judy Linder, special events; and Joe Tanis, assistant to the vice president, will identify, cultivate and solicit potential donors.

#### What message does the Foundation have for the campus community?

The campus community needs to recognize that the University now has an active, professional, fundraising team with offices located in Hobart Manor. Any member of the campus community who has a project which they believe may appeal to a donor is encouraged to talk to the development staff. The project will be evaluated to see if it is appropriate for philanthropic support. If the answer is yes, then strategies will be developed to identify funding.

#### What are some examples of fundable needs?

- Scholarships
- Programs that enhance student success
- Programs that link the University with other institutions or nonprofits
- Programs that are deemed necessary to meet institutional priorities for which there is no public funding
- Programs that provide recognition and visibility to the donor and institution while creating a margin of excellence in academic programming

#### How important are the alumni to fund raising?

Very. More than one-third of all donations to the University come from alumni. They constitute the base on which to build a major gifts program. Alumni Association scholarship and grant programs are making a difference at William Paterson.

#### The future?

Although it's hard to say what the future needs of the University will be, scholarships and unrestricted funds to support worthy programs will always be needed. In addition, the University has no endowment and that should be addressed. The development staff and the Foundation board are evaluating philanthropic opportunities for the University, identifying potential donors and making plans to enhance William Paterson's charitable-giving programs.

WILLIAM PATERSON UNIVERSITY  
FOUNDATION









Check out The Beacon's  
new WEB PAGE!

[http://www.geocities.com/Wellesley/](http://www.geocities.com/Wellesley/3050/beacon.html)

[3050/beacon.html](http://www.geocities.com/Wellesley/3050/beacon.html)

beginning this Thursday, the Beacon

will be fully internet-linked,

with special

stories and

pictures not

printed in the

paper this

week.

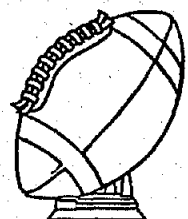


## Waterfront Tavern

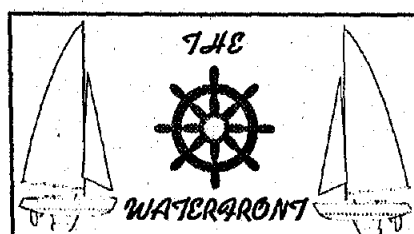
On Packanack Lake, Wayne

Live Bands  
every Saturday Night

Satellite TV, All NFL Games



Pizza, Italian Food



Call (973) 696-7998  
for more information

# LOOP

Lounge

# ASTRO

**EVERY THURSDAY  
FREE LIVE SHOWS  
& \$2.00 IMPORT PINTS**

**Thursday, April 2nd**

(\$10 COVER)

**THE FALL (FROM THE UK)  
THE BUSH TETRAS**

**Thursday, April 9th**

**THE PRISSTEENS  
DEMONSPEED**

Check us out on the web  
[www.looplounge.com](http://www.looplounge.com)

**FRIDAYS & SATURDAYS  
FREE ADMISSION**

**\$1.00 Bar Drinks & Coors Drafts**

Until Midnight

**D.J.'s Play The Smart Dance Mix**

**Open Wed.- Sat. Till 3 AM**

Directions from campus: Rt. 46 East to Rt. 3 East to Passaic Ave.  
Nutley/Passaic exit, go to right of ramp, go three traffic lights & make  
a left, (Van Houten Ave.) Go to first traffic light, make a right onto  
Broadway. Loop is on the right.

373 BROADWAY PASSAIC PARK, NJ 973-365-0807

## Under the Megascop

from MEGASCOPE page 7

like "I'm a hero like Robert DeNiro." Using Marley's name is just a ploy to sell records and who knows? It may work but only for the people that don't think for themselves. (EE)

**The Reverend Horton Heat**

*Space Heater*  
(Interscope)

Wow, this is really awful. Reverend Horton Heat rocks (or used to rock anyway) a punk rock-a-billy kind of thing that was at one point entertaining. The last time I heard these guys was on their second LP *The Full Custom Gospel Sounds Of...* and oh what a difference three albums makes.

*Space Heater* is the Rev's fifth full length album, and there isn't enough energy on this disc to justify a one-sided 7". The songs are performed very unenthusiastically and sounds more like a contractual obligation album than a work that the band would be proud of. Plus, the album is 16 tracks long. Please, if you are not going to make your album good, at least make it short.

The first single off of the album is called "Lie Detector." This song alone should be repellent enough to keep away all but the die hards. It's just boring to put it bluntly. The band sounds like they're just going through the motions. The rest of the album follows suit with the exception of one song, "Cinco De Mayo." Two reasons it's good. 1) it's fast. 2) it's sung in spanish. Funny song, but it is certainly not enough to carry the



The Reverend Horton Heat

album.

Pass up this album. If want to learn more about the Reverend Horton Heat, try their second album *Full Custom Gospel Sounds Of...* That one is actually good. (TB)

**Incubus**  
*S.C.I.E.N.C.E.*  
(Immortal/Epic)

Incubus sounds a little too much like 311 for my liking. However, Incubus is a little more intelligent and angrier than your average plastic-rock band. The band captures your attention from the start and holds it through the length of the album. They mix hip-hop, funk and hardcore to create a sound that is ubiquitous among the MTV pseudo-underground scene. Don't let that stop you from liking Incubus. Musically, traces of originality can be found on certain tracks and at times their lyrics approach excellence and come off as genuine and sincere.

"Summer Romance (Anti-Gravity Love Song)" stands out as the album's highlight. They add a saxophone for this track, which radically alters the sound and leaves the song sounding like no other on *S.C.I.E.N.C.E.* "Idiot Box," "Favorite Things," and "A Certain Shade of Green" are also above average tracks despite the fact that at times Incubus lets their mediocre beats dominate their songs, and lets them run a little too long.

A cross between *Rage Against the Machine* and 311 is probably the best way to describe Incubus. There are enough good tracks on this album to make it worth listening to and the hidden track at the end is both funny and inventive. *S.C.I.E.N.C.E.* is defi-

nately worth a listen to.

(DR)

**Earth Crisis**

*The Oath That Keeps Me Free*  
(Victory)

Usually live records come across as a way for a band to sell records and showcase what their live performance is all about. This album is no different. Earth Crisis recorded a live set from their hometown in Syracuse, New York. The reigning kings of the underground straight edge world certainly pack a huge wallop when it comes to shows. All of the songs on *The Oath That Keeps Me Free* are heavy, tight, and have deep throaty vocals that could possibly scare small children. It all adds to the effect, Earth Crisis shows are not for the weak.

As far as songs go, tracks that have appeared on all four of Earth Crisis' previous Victory releases are represented on this live disc. There are also a few new numbers that appear and vocalist Karl Buechner has really honed his lyrical abilities. With words like "Disbelief and doubt are the luxuries of the ignorant. Placebo mockery intended to discredit. No longer has meaning, drifting closer, taking shape, through the mists, tragedy rides forth the last laugh is mine," it is clear that Earth Crisis is fighting a war and, as they say, "this is a weapon." Opening the disc is an unlikely cover of Cream's "Sunshine of Your Love" that is almost too funny to listen to. The vocal style of Buechner does no justice to the song. In all, Earth Crisis' studio material is much better than any of their live stuff. (EE)

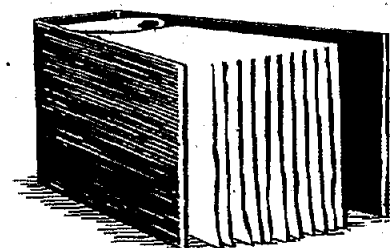
HOLOCAUST AWARENESS DAY

presents

**CLARA ISAACMAN**

author of *Clara's Story*

Holocaust survivor



April 3, 1998

SC Ballroom

12:30-1:45

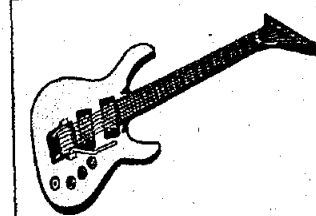
light refreshments served

sponsored by Hillel, Sociology Club, SGA

## BANDS INFO

### SHEET

Sponsored by  
Greek Senate



Bands must submit a tape either in person, to me, Janice Rainford, or into my mailbox in Don Phelps' office in Campus Activities. The latest that tapes will be accepted in 5:00 p.m. on April 2. Tapes arriving after that time will not be considered for Musicfest. Once the tapes are received, a committee ranks the music on a 1-10 scale, and the four bands with the highest tallies will be the bands performing this year. Musicfest is on Wed., April 22, and the bands selected will play for forty minutes. A prize will be announced once all things for Musicfest are budgeted. It is preferred that bands have a sponsor, whether it be a Greek or a Club on campus, and upon announcement of bands playing, they will have to sign a contract accepting that they will be playing that day. A soundman is provided and members of the selected bands must bring their own instruments. When handing in your tapes, make sure it is re-wound to the song that you would prefer for the committee to hear.

Thank you  
Janice Rainford  
Musicfest Chair  
Instrumentals Not Accepted

**FEATURING DJ SHORT CUT**



# Scene this one?

from SCENE page 9

presence known and didn't allow us to forget it. Mr. Dragon's performance was as much surprising as it was entertaining. He created a very solid character that I wouldn't expect from a newcomer. He truly found his character.

I also wanted to make notice of the wonderful cameo performance of Jill Butterfield. The scene with her character, Lee, and Hank was one of the best moments in the play.

M- Let's not forget the rest of the cast either. The characters Doctor Wally (Will Koehl) and Ruth (Susan Binder) provided some comic relief throughout the otherwise tragic story. A special appearance by "Gofer Man" in the Walt Disney World scene also made for a laugh. Yes, no doubt about it, the cast was solid all around.

C- Again, I have to agree with you. I would also like to mention the efforts of Charlie (Reed Van Dyk), Bob (Jeffrey Wickersty), and the Retirement Home Director (Alison Lauth). The combination of their performances added to the quality

of the play. I also want to mention the set and the music that created the mood. The set was incredible. Ed Matthews worked his genius again.

From the house to the doctor's office, the set worked effectively. For the most part, the music was appropriate, although, some songs were a little distracting.

M- Yes, the set was very effective. The subtle changes of the set between scenes transforming the stage from a doctor's office to a home to a backyard worked with ease. I also felt the lighting helped to create the mood of each scene. Marvin's Room is a triumph for the director/scenic & lighting designer, Edward Matthews. It goes to show you theatre on the WPU campus is not dead.

As for the music, yes at times it was a bit silly but I didn't find it distracting. In fact I think it fit well with the play. Although, I must say, sound designer Adam Nemeth, did seem to have some kind of late career Van Morrison fetish. Am I the only one who noticed that?

C- Indeed, theatre is not dead on this campus Mike. The PARM

Unit is pushing to keep theatre alive and to do so they are having open auditions for their summer comedies.

On April 27 and 28, the PARM Unit is holding auditions from 6-9 p.m. and 6-10 p.m. All are welcome. If I'm not mistaken, they are performing "Love Always" by Renee Taylor and Joseph Bologna, and "Sylvia" by A.R. Gurney.

M- This production of Marvin's Room was excellent. The students and outside members worked hard for six weeks to pull this show together. Their efforts paid off and made for an enjoyable night of theatre.

The acting was great and the sets and lighting were pleasing to the eye. (Special thanks goes to the techies I'm sure.) I would recommend all members of the campus community to check out the fine work that is done right here at WPU.

If you missed Marvin's Room, you still have a chance to see "Kiss O' Death," a new play by Peter Timony, and "Them Next Door," by G.L. Wallace. Both will be performed mid to late April in the Hunziker Black Box Theater.

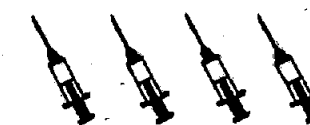
C- Overall, I enjoyed this play. There were some outstanding and emotional performances. There was some great chemistry between the lead characters and the supporting cast held their own. The show runs about two and a half hours and brings you through many emotions, from tears to laughter.

There is nothing more I can say but try to catch the last two shows in the Shea Center for the Performing Arts tonight, Monday, March 30, and tomorrow, March 31 during common hour.

On a scale of 5 syringes:  
M- I rate it 4 1/2 syringes



C- I rate it 4 syringes



SO WHAT DO YOU  
THINK ABOUT THE  
NEW COLUMNS  
IN THE ROPES  
AND  
SCENE THIS ONE  
IN THE INSIDE?  
COME ON, GIVE US  
YOUR FEEDBACK!  
CALL THE BEACON  
AT X2576 OR COME  
TO STORM  
CENTER ROOM 310

## Holocaust conference to aid teachers

from HOLOCAUST page 1

After Winkler's speech, the conference will break up into smaller groups of people. Then will then go over materials and review how to use them, discussing which grade levels should use them. This break will also allow feature open discussions, and a question and answer session.

At 12:30 p.m. in the Student Center Ballroom, Clara Isaacman, a survivor of the Holocaust and author of "Clara's Story," will be speaking about her experiences of hiding out in occupied Belgium.

She will accompany her presentation with a slide show that displays both general pictures of the events which took place as well as pictures of her own life. This presentation is free and open to all students and faculty.

Stein noted that the conference is designed to "Help teachers use the material, and to make sure that the material is age appropriate."

This conference will give all who attend various materials and lists of books that can be used in the classroom. Discussions will include usage of various literature such as diaries, poetry, and other stories to aid in teaching about the Holocaust.

The conference will be held in the Paterson Room of the Sarah Byrd Askew Library from 8:30 a.m. to 3 p.m.

The conference will end with a panel discussion entitled, "Exploring the Use of Survivor Testimony in the Classroom," starting at 2 p.m. led by Dr. Karen Shawn, assistant principle director of Holocaust Education at Moriah School of Engelwood.

Stein added, "In addition to what can be learned, one can get an appreciation of the suffering of other groups, and hopefully students and adults will learn to appreciate other cultures and learn a tolerance for them."

## Admissions policy being revised by Office of Admissions and Faculty Senate

from ADMISSIONS page 1

"When we compete for scholarship students we are doing pretty well," added DeBartolo.

Currently, there are no changes being made to the school's curriculum, which is under control of the Provost's Office.

The Office of Admissions wants to keep a consistent level of growth in the number of students, and to provide services to keep

those students enrolled. According to Nancy Norville, dean of Enrollment Management, no drastic changes in admissions standards have taken place this year.

For the future, the school is "looking at a variety of different things that will expand the admission process and bring in new students," said Dean Norville.

The Admissions Office uses a formula called the academic index to admit students. High school rank and Scholastic Aptitude Test (SAT) scores are put into the formula to decide if the student meets the standards.

The Admissions and Academic Standards Council's report showed a need for future changes. These recommendations are being considered currently by the various offices. Any decisions on changes will be made with faculty input.

One possible change being considered is the use of an interview to further evaluate prospective students. The council also discussed the possibility of raising classroom standards. The areas discussed include grading practices, student outcomes, freshman year experience, basic skills, and mentoring new faculty.

According to Norville, WPU is "looking to broaden admissions criteria to take into account those attributes students have that may not be quantitative such as leadership and volunteerism."

Together with the Faculty Senate, the Office of Admissions is working on bringing more competitive and high caliber students to the WPU campus.

## LOS ANGELES UNIFIED SCHOOL DISTRICT

The Los Angeles Unified School District is offering Outstanding employment opportunities for math, Science, elementary and special education teachers.

- Entry-level salaries: \$31,304 to \$54,580
- No Salary Rating-in Limitations
- Bilingual Differentials up to \$5000 per year
- Excellent benefits package

Interviews:  
April 23, 1998  
New York City

Recruiters will be in New York City to interview Candidates who have completed a state teacher Certification program including student teaching.

To arrange an interview please contact:  
Carol Weiner at (213) 625-6923  
11:30 a.m.-7:00 p.m. Eastern Time  
Deadline for Registration: April 10, 1998

## Community Mental Health Opportunities

Barnert Hospital, a 256 bed acute care community hospital is pleased to announce the following opportunities in our Access Program. Access is a state-wide program providing specialized mental health services to deaf individuals and their families.

### Outpatient: Mental Health Clinician

MSW/MA in Counseling preferred, will consider MA/MS degrees in Deafness Rehab and Rehab Counseling. Native signer or SCPI rating of Advance or better required. Responsibilities include providing psychotherapy to deaf adults in a community mental health center setting; treatment planning; case mgmt.; etc.

### Partial Care: Mental Health Clinician

MSW/MA preferred, BSW/BA in Counseling, Deafness, Rehab, Rehab Counseling required. American Sign Language (ASL) fluency required. Experience with developmentally disabled a plus. Responsibilities include assisting deaf and mentally ill adults achieve higher levels of functioning in all areas of life.

### Residential: Residential Counselor

HS diploma required, BA degree preferred. ASL skills and experience with developmentally disabled a plus. Responsibilities include providing a home for deaf and mentally ill adults that will foster growth and skill development in socialization, communication, vocation training, recreation, self monitoring of meds, etc. Utilization of hands-on activities in the community is preferred method of teaching skills.

### Residential: Independent Living Specialist

BA/MSW in Counseling, Rehab, or similar related fields. Intermediate signing skills required. Position requires the use of clinical skills to assist clients living in a semi-supervised apartment in areas such as interpersonal skills, treatment compliance, budgeting, shopping, social, and leisure activities.

### Sign Language Interpreter

Registry of Interpreters for the Deaf (RID) certified or New Jersey Div. of Deaf and Hard of Hearing screened. Minimum of three years interpreting experience required. Responsibilities include interpreting for: psych evaluations, meds appointments, patient admissions, staff meetings, training, etc.

We offer a competitive benefit package and competitive salary which includes skill based pay using the SCPI rating system. Please mail/fax resume to: Human Resources, Barnert Hospital, 680 Broadway, Paterson, NJ 07514. Fax: 973-279-2924, EOE.



FOR the EDUCATION and RESEARCH COMMUNITY

1040-40's

**PAIN.**

**PAIN KILLER.**

For fast relief from the nagging ache of taxes, we recommend TIAA-CREF IRAs. IRAs are tax-deferred annuities that can help you build additional assets—money that can make the difference between living and living well in retirement.

Contributions to IRAs are conveniently deducted from your salary on a pre-tax basis. The result? More money invested. Fewer taxes paid. And since investment earnings are tax-deferred until you withdraw them as income, the money you don't send to Washington can go even farther.

What else do IRAs offer? A full range of investment choices, a helpful loan feature, and the financial expertise of TIAA-CREF, the world's largest retirement system.

Now More Ways to Meet Your Goals

Today TIAA-CREF can help you meet even more of your financial objectives, with IRAs, mutual funds, and more. We'll help you select the solutions that suit your needs. Visit your benefits office or call us at 1 800 842-2776 to learn more.

Visit us on the Internet at [www.tiaa-cref.org](http://www.tiaa-cref.org)

**TIAA-CREF** Ensuring the future for those who shape it.

\*Based on assets under management. TIAA-CREF Individual and Institutional Services distributes CREF certificates and interests in the TIAA Real Estate Account. For more complete information, including charges and expenses, call 1 800 842-2776 ext. 6500. For the prospectus, read them carefully before you invest or send money.

Write for  
The  
Beacon!  
There are only  
SIX issues left  
this semester!  
Act now!  
Call x2576 or  
come to  
Student  
Center Room  
310.





# University Career Fair

Hosted by the Career Development Center and the Student Government Association

Date: Wednesday, April 8, 1998

Time: 10 a.m. - 1 p.m.

Place: Student Center Ballroom

The following companies are scheduled to attend:

AHRC - Camp Catskill  
Accountants on Call  
AOE Ricoh  
AT&T Wireless Services  
Automatic Data Processing  
Bed, Bath & Beyond  
Bel Art Products  
CJM Planning Corp.  
Catholic Community Services  
Community Options  
Copelco Capital  
Covenant House  
Davis Companies/Staples  
Delta Corporate Services  
Enterprise Rent-A-Car  
First Colonial Mortgage  
FBI  
Fortunoff

Great Atlantic & Pacific Tea Company  
Huntington Learning Center  
IHS Helpdesk Service  
Internal Revenue Service  
J.G. Wentworth Funding  
Jenny Craig Weight Management  
John Hancock Financial Services  
Lakeland Hills Family YMCA  
Liberty Science Center  
MCS Business Solutions  
Merrill Lynch Video Network  
Met Life  
NJ Community Development Corp.  
NJ Juvenile Justice Commission  
NJ State Police  
NJ Transit  
Nextel Communication  
Nori, Hennion, Walsh, Inc.

Northwestern Mutual Life  
Our House  
Peace Corps  
RPS, Inc.  
Ruitenberg Displays, Inc.  
Six Flags Great Adventure  
Social Security Administration  
Spring Lake Day Camp  
State Farm Insurance  
Union Camp  
Union Federal Mortgage Corp.  
United Parcel Service  
U.S. Army  
U.S. Marine Corps  
U.S. Navy  
Valley National Bank  
Wireless America, Inc.  
additions...

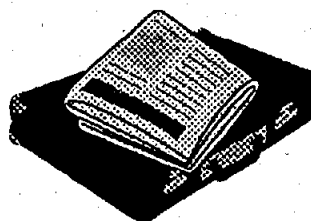
Plan on attending the following workshops during the Career Fair...

## Interview Techniques

Time: 9 a.m.

Place: SC 213

Presented by: Office Mates5



## Resume Writing & Critiquing

Time: 10 a.m.

Place: SC 324-5

Presented by: Enterprise Rent-A-Car

If you have any  
questions, please  
call  
(973) 720-3021.

## How to perform a Job Search

Time: 9 a.m.

Place: SC 324-5

Presented by: Norrell Financial Services

## Marketable Skills Every Student Should Have

Time: 11 a.m.

Place: SC 213

Presented by: Office Team

## Beacon Classifieds

### OUR RATES

To run 20 words for one issue is \$6.50, 21-35 words \$7.50, each additional 10 words \$1.00

### HOW TO PAY

All classified ads must be paid in advance, unless you have an account with the paper

### DEADLINES

Classified ads must be placed by 12:00 P.M. Friday before publication.

### SEND ADS TO:

The Beacon  
300 Pompton Rd. SC310  
Wayne, NJ 07470

### CLASSIFIEDS

check or money order payable to THE BEACON

**Models. Women 18+** for outdoor test shoot by hobbyist photographer. Will exchange pictures for modeling. No experience necessary. (973) 365-4054. Only reliable apply.

**Gardener's Assistant** Earn \$8/hr. maintaining beautiful private garden in Ridgewood. 10-15 hrs./wk. Responsibilities include mowing, blowing, planting, pruning and weeding. References required. Call (973) 445-3869.

**Child Care-** Four year old seeks experienced, reliable, fun-loving baby-sitter in her Bergen County home. Call: (201) 692-8482.

**2F roommates** wanted to share Haledon apt. \$300 security \$250 per month (+ utilities). 4 Bedrooms total

opens June 1, non-smokers, no parties, clean, responsible, 21 years and older, only, kitchen, living room, 1 bath. Call Nicole (973) 720-1978.

**Looking for Elementary-Ed. student** to care for children ages two and five in Wayne home. Two days weekly 8:30- 5:00. Daytime (973) 628-2461, Evening (973) 633-1815.

**Looking for Big Brother** to work with developmentally disabled 18 yr. old male. Must love sports. Please call Barbara (201) 512-9125.

**Healing Arts By Patricia:** Hands on for well being. Certified in Reiki, Therapy. Touch Reflexology, Chakra Color, and Crystal Therapy/Pets. Also By appointment. (973) 872-0534.

**Computer Workers Needed/** \$25.00 p/hr Looking for NON- Techies with Own Car & Computer to Install Hardware /Software Troubleshoot & Minor Repair on PC/Mac Teach Basic Windows/ Mac/ Internet Networking Helpful, Website Dev. a + Call (201) 337-7403.

**Quality Day Camp** in Morris County has the following summer positions open: Counselors, Swim, Photography, Drama, Music, High Ropes, Sports, Roller Hockey, Maintenance. Please call (973) 895-3200 for further information.

**Pt/Ft Flexible Hours** at Farm Marketing helping customers, work in an outside environment now through October 31. Must be ambitious and friendly.

Apply by appointment. (973) 839-1212. Farms View Wayne.

**Baby-sitter** wanted for two children. Nursing or education major preferred. Experience with babies required. Flexible hours. Call Kathy at (973) 535-8089.

### Beacon Personals

Check out Spanky's webpage at <http://home.earthlink.net/~gmeneses>. Great photos!

**BZF Dating Game** April 13- 7 p.m.- for more info contact JEn Grillo at X4322.

**Congratulations Beta-** love the Angels

**Amanda** (BZF Associate) - keep up the work-I can't wait until you are a sister. stay

strong- love your secret Angel

**Congratulations** to the newest additions of LQA Latin Sorority, Inc. Sigma Chapter...Tara, Melissa, Christine, Carmen, Lily, and Anna....I love you always! Christina

**Stay strong.....**To the line of LQF Latin Fraternity, INC. XI Chapter...hope to see you Soon...Love always!!! - Cristina

**To the pledges** of Beta Epsilon Alpha Chi Omega Nu- Don't worry, it's almost over!- Love, US

### Female Models Wanted-

Professional Photographer Seeking Models for sexy/exotic lingerie & playboy style glamour & nude figure study. Must have car, Earn Top \$\$ & Receive Photos. 19-40yrs beginners welcome. If interested call: Le'Image Photography. (973-661-3320) 7pm to 10pm ask for Michael 2 locations North & central Jersey.

### Help Wanted

Looking for Performers to do

Costume Characters

- \* Must have own car
- \* Must like children
- \* Great Pay
- \* Flexible hours

Call 800-539-8743

### Operations Assistant

Immediate Job

Opportunities Available

Monday Through

Saturday Shifts

Flexible Hours

**Make Your Own Schedule**

**Earn While You Learn**

Apply In Person:

IPC

1 Madison Street

Building F

East Rutherford

Think you're pregnant?  
Partner pressuring you?  
Let's talk it over...  
we can help.

Our free & confidential services include:

- Pregnancy Testing
- Counseling
- Post-Abortion Support



(973) 538-0967  
24-hour Hotline

Morristown • Wayne  
Jersey City

## College Students!

Wanted:

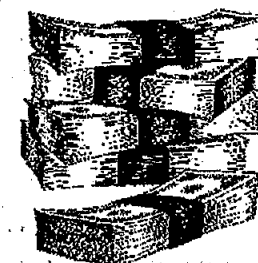
**Delivery People & Party Tent Installers for the Summer!**

Immediate Job Opportunities Available  
Full /Part-Time and Summer Positions  
Work Outdoors  
in the Party Business!

**TAYLOR RENTAL**  
We're more than just products at work.

Call Matt for more information,  
(mention this add), and  
**Interview Today!**  
**201-848-8326**

787 Susquehanna Ave. (just off Pulis Ave.),  
Franklin Lakes, New Jersey



**Earn \$\$\$ this Summer**

## SALES

ELECTRONICS/  
HOME OFFICE

FT/PT

Start at \$8.00  
Earn \$28k+

TOPS APPLIANCE CITY is GROWING again and needs friendly, outgoing and motivated salespeople. If you're a Techy, have good communication skills and like people, lets talk!

Experience not required, we offer training PLUS the best commission and benefits program in the industry.

APPLY: In person  
Sun: 11-6pm  
Mon-Fri: 10-9:30pm  
Sat: 9-9:00pm

**TOPS**

E. Hanover: Rt. 10 Union: Rt. 22  
EOE M/F/D/V



# PIONEER SPORTS

**Tuesday March 31**

Men's Baseball at West Point 3:30  
Women's Softball at Muhlenberg 3:00

**Wednesday April 1**

Softball away at Ramapo 3:00

**Friday April, 3**

Baseball home vs. Rutgers-Newark 3:00

**Saturday April 4**

Track- Princeton Invitational TBA  
Baseball away at Rutgers-Camden 11:30  
Softball home vs. Montclair 1:00

## Successful season leads bowlers to Intercollegiate Championships



Photo compliments of Bowling Club

Louis Franzetti, middle, was recently awarded the All-Events Title at the Brunswick Great Lakes Classic in Palatine, Illinois. Franzetti was named the Bowling Writers Association of America Collegiate Bowler of the Year.

By Jason Biziak  
Sports Contributor

Next stop for the William Paterson University Bowling Team is the 1998 Intercollegiate Bowling Championships held April 15-19 in Madison, Wis. The team earned a bid by plac-

ing second in the Eastern National Qualifier which was held March 21-22 in Baltimore, MD. Earning a bid was not a surprise to the team. Throughout the season the team has been nothing less than spectacular.

Having competed in nine tournaments this season the WPU team

has never placed lower than 11th in any of the tournaments that field between 50-60 teams per competition. The upcoming tournament will be a test for WPU because the 16-field tournament will boast the country's best; both on the individual and team level. The team has the tools to erect a championship

caliber run.

WPU will be led into the Nationals by 1998 Bowling Writers Association of America Collegiate Bowler of the Year Louis Franzetti and Bowler of the Year Honorable Mention John Asbaty. Rounding out the rest of the team are Tom Kalick, Jennifer Russo, Patrick Sandomenico and Joe Scarlato.

Although she did not win any individual awards this season Jennifer Russo will play an integral role in the team's run at a title. Russo has enjoyed much success this season; she has placed 1st (overall) in the Keystone-Quacker Classic, 3rd (women) in the Colgate Invitational, and 7th (women) in the Brunswick Northeast Showdown.

A sense of pride and tradition will also be in WPU's favor heading into the Nationals. Including this year, this will be WPU's 10th appearance in twelve years; with the team winning the National title in 1992 (men's) and 1993 (women's).

The team will also be led by an individual that does not grace the lanes but rather the organizational

aspect of the team; first year president of the William Paterson University Bowling Team Matt Halpern.

His duties throughout the season have been to maintain and organize the teams financial budget as well as represent the team at scheduling meetings prior to the season. Halpern is not your ordinary president, he takes pride in the teams success as does every member of the team. Halpern tries to be at every practice and match; schedule allotting.

"Our team achieved its success through hard work, dedication, and a desire to maintain the highest level of competition against the top collegiate bowling teams in the country," said Halpern.

"Having the opportunity to compete in the Intercollegiate Bowling Championships proves these bowlers were able to maintain that level with great skill," he added.

Halpern is full of optimism heading into the Nationals. "The stage has been set, and the William Paterson University Bowling Team is ready to put on the performance of a lifetime."

### The Final Thor

By Ira P. Thor  
Sports Columnist

Okay, Be honest now. Who out there actually gave Utah a shot at beating North Carolina? Let me see some hands that's what I thought. Utah, in the true sense of the word, has been an underdog since the Blite 8. I think it's safe to say that everyone outside the state of Utah thought Arizona would have a cakewalk into the Final Four. After all, Keith Van Horn, the Utah All-American graduated last year, and now plays pro ball in Jersey.

Along the way, someone forgot to notify the Cats that they were going to be stripped of their Crown 76-52.

After that victory, Utah opened many eyes a little. And when UNC appeared in their path, I thought that Utah proved they were talented enough to have a chance against UNC. In fact, if any team could beat UNC, Utah was it. After all, look at Utah's size, especially center Michael Doleac, the 6-11 265 pounder who leads the Utes with 16.2 points, and over 7 rebounds per. Andre Miller, the guard who scored a triple-double against

Zona, to open the eyes of many matches up well with Carolina guard Ed Cota.

But that was it who could actually beat UNC? Behind National Player of the Year Antawn Jamison, and athletic all-American Vince Carter, and the guidance of the winningest first year coach of all time (Bill Guthridge), UNC is far too talented to be denied the national title. Right?

Wrong, baby! Did I forget to mention that Utah head coach Rick Majerus proved he is a coaching GENIUS. It worked against Arizona, so Majerus inserted another form of the triangle and two defense. Hey it worked. Utah pulled out to an early 15-2 advantage, courtesy of UNC missing 8 of their first 9 shots. They were so out of sync, they didn't even hit a free throw the entire first half.

Utah would never look back. UNC would pull within two late, but it just wasn't Carolina's day. In the year of the upset, Utah pulled off one of the biggest ones of the tournament, knocking Carolina 65-59.

So, Schuttick, what's next? see THOR page 13

## Pioneers pound 7th ranked Cortland

By Ira P. Thor  
Sports Columnist

Wayne, NJ----- Pioneer power continued to lead William Paterson through the last week of March, as the baseball home schedule entered full swing with a split against nationally ranked opponents. The Pioneers, themselves entering the week 18th in the NCAA Division III poll, should rise in the rankings, following a close 5-2 loss to 17th ranked Rensselaer (NY), and a 12-5 of 7th ranked Cortland State (NY).

William Paterson, who had not competed since a 7-4 loss to Northeastern Illinois on March 14 in Fort Myers, Florida, began the week in style by whipping Wilmington, Delaware 8-2, on Tuesday, following a 10 day hiatus.

The contest was a non-conference pick up for the Pioneers (8-2), and it almost turned ugly. William Paterson trailed 2-1 entering the top of the 7th, before unveiling the muscle, scoring seven times in the final three innings, to head home with an 8-2 victory.

It was the man doing the catching, who forced Wilmington (9-7-1) to try catching up. Junior transfer R.C. Renshaw (5-11 180 Roseland, County College of Morris) belted a three-run blast in

the seventh, his third homerun this season, to lead the team. Third basemen Craig Cutler scored twice (junior, Ramsey), smacking three hits along the way. After ten games, he leads the team in both categories, 13 and 15, respectively.

"Craig's done a solid job. He's had only one bad game," commented head coach Jeff Albies, in his 24th year at the helm of the Pioneer ship. Junior Nick Franklin (6-1 210 Bloomfield) cracked his second homer of the season for WPUNJ.

Sophomore righty Jason Messina (5-10 175 Cliffside Park) pitched tremendously to pick up his second win of the year against no defeats. In 7 2/3 innings, Messina fanned six, allowing just two runs and six hits. His ERA is 3.68, with 13 K's in just 14 2/3 innings pitched. James West (0-1) took the loss for Wilmington. Dave Reichard homered in a losing cause.

Pioneers opened their 11 game home schedule with the 5-2 loss to Rensselaer (7-3) Friday afternoon. A slumping Bob Slomkowski suffered the loss; Slombo's now 1-2. The loss-only the fifth of his superb four year career.

Cutler matched Renshaw's team lead with his third dinger of the year. Junior centerfielder Brian Panebianco (6-1 180 Manalapan) scored a run, and produced two

hits.

With the loss, the Pioneers drop to 8-3 overall. It was their first loss in two all-time meetings with the Engineers.

A year removed from a stellar 9-0 record that helped the Pioneers capture the 1996 National Championship, Slombo was clocked throwing at 89 MPH in Florida, this despite receiving a medical redshirt in 1997 after developing tendinitis in his right pitching shoulder.

His major leaguedraft-ability is going to depend on how he is able to handle himself the next two months. He still can overpower most batters he faces. The K's will be there-but what has happened to the wins (23-5 at WPUNJ).

"We're pleased with how he's been pitching," added Albies. "His two losses-Saginaw Valley was a good team, and Rensselaer hit the ball well. They were aided by a carrying wind. We're looking for him to have a big year. We're not worried about him at all.

The Pioneers righted the ship in fashion, drilling Cortland State 12-5 Saturday afternoon at Wightman field. William Paterson has never lost to Cortland in four tries.

And once again, it was power that paced the Pioneers (9-3). Junior first baseman Mike

see BASEBALL page 13