

# The Beacon

COPYRIGHT 1998 VOL. 62 NO. 24

FREE  
25¢ outside of Passaic County

MARCH 2, 1998

## Campus Police in search of suspects for car vandalism

By Pamela Langan  
News Editor

Approximately 15 cars were damaged during the early hours of the morning of Monday, February 23 in parking lot 5 of William Paterson University.

According to Campus Police Sergeant Russ Stengel, Sergeant John Casaleggio and Patrolman Al Clark were on routine patrol at approximately 4:50 a.m. in row D of lot 5 when they noticed broken car mirrors were lying next to several cars. Upon investigation, they found three damaged cars in row D, three damaged cars in row C, and seven damaged cars in row E.

Casaleggio and Clark notified other patrolmen and advised them to investigate other parking lots. Four cars were found damaged in lot 2, which makes the total number of damaged cars 15.

Campus Police notified the owners of the cars and had them give statements of new damage,

considering the fact that some of the damage on the cars could have been previously done.

"There were predominantly broken mirrors," said Stengel.

He added that some of the mirrors were just broken and hanging off of the cars, and some were lying on the ground. While some of the students also suggest that their cars had been "keyed", meaning scratched with a key, Stengel commented that the scratches on the car could have been damage from removing the mirrors.

"We don't have any suspect for the incident," said Stengel. "No one has a reason or any idea why it occurred to their vehicle," he added.

If someone is found responsible for this act of vandalism, the penalty is dependent upon the amount of money estimated from the damage. Although 15 cars were damaged, the incident is counted as one case.

According to Stengel, if the total

damage is reported under \$500, it is considered a disorderly persons offense and the person is charged with criminal mischief.

If the damage totals over \$500, it is considered an indictable crime, and the person will have to go to the county grand jury.

If a total of \$2000 or over is found, it is considered a third degree crime and the punishment is more severe, according to Stengel.

Campus Police confiscated some of the mirrors that were on the ground, and are currently planning to check them for fingerprints with their own identification specialist. If needed, they will also send the mirrors to the County Bureau of Identification to check, considering that most of the fingerprints could be those of the owners.

Unfortunately, the victims of this crime are not going to be reimbursed for the damage to their cars. However, Stengel noted they



photo by Sylvana Meneses/ The Beacon

Cars parked in different rows of Lot 5 were damaged early Monday morning, with broken mirrors and scratches on the cars. Campus Police are currently looking for a suspect.

have been referred to the WPU Risk Management Department.

Campus Police is currently searching for those responsible for this crime.

They encourage anyone who saw suspicious characters in the parking lot between the hours of

approximately 1:30 a.m. and 5 a.m. on Sunday morning, or has any other useful information about the crime, to contact the Detective Bureau at 720-2300. According to Stengel, all information will be kept confidential.

## Candy shop in Student Center pleases many WPU groups ready to celebrate Women's History Month in style



photo by Carolyn Fuge/ The Beacon

Pictured above is the "Sweet City Express" counter which stands behind the Information Desk in the Student Center.

By Rebecca Green  
News Contributor

Recently the information desk at the student center has introduced a new feature. A variety of candy is now sold at the desk.

Tony Cavotto, Director of Hospitality Services first saw candy being sold at a student center at a Long Island college.

Then at a trade show he saw the set up and was asked to try it for William Paterson University. There was no charge for the set up and the equipment when the candy was bought.

The school paid for the cost of purchasing the candy, and the

sweet shop is considered an extension of the vending operation. The profits made from it go to the Student Center.

In the past there was a sweet shop on campus from 1970-1990. According to Cavotto, it did well at the Student Center during the time. Taco Bell was then opened in place of the sweet shop. The new candy counter, "is a smaller version and more manageable than in the past," said Cavotto. The sweet shop helps to increase the interaction at the information desk, and people will see the information available to them.

"The two operations in one location help each other," said

Cavotto. "I invite the students to come and check it out."

Although the student workers have now been given a new responsibility in addition to their original job, the employees have responded well to this new job.

"I have not heard anything negative. I can't imagine them being upset about it. Candy is a fun thing," said Cavotto.

The reaction to the candy counter from the student employees has been positive. Jennifer Bird, sophomore info desk worker said "It's been good. A lot of people have been using it. It's a good idea."

This new responsibility has also been a job improvement for some. "It makes the time go by faster. It gives me something to do," said Amanda Amerman, a freshman student employee.

Another student worker, freshman Joannie Nunez said "It's kept us busy. One person can't work by themselves."

"At first I thought this was a rotten idea. I thought it would clutter the info desk area and cause confusion among the workers. However, this has not been the case," said Michael Wnoroski, junior Student Director.

"The workers have handled it well and the students seem to really enjoy it," added Wnoroski.

"I think it's a nice way to make money for the school. If you're really hungry, it's the only thing open everyone can afford," said student Junique McRae.

By Robyn J. Caputo  
News Contributor

To celebrate March as Women's History Month, the campus of William Paterson University will be hosting many different events. This year's theme is "Conversations Across Centuries," which will commemorate the many achievements of women in all areas of life.

The kick off of events starts with the bridge between African Heritage Month into Women's History Month with Multicultural Awareness Week. From February 27 through March 6, one can enjoy a cultural variety from "Learning from our Shared Histories," conversations with historic legends, to a dance performance done by Gambia, a group of West African students and faculty.

This year marks the 150th anniversary of the first Women's Rights Convention held in Seneca Falls, New York in 1848. WPU has had a Women's Studies program since 1973, however this is the first year the program has been made into a full department where students can now get a degree in the area.

Dr. Meryle Mahrer Kaplan, the

coordinator of the WPU Women's Center, is excited about this year's events. Kaplan has been involved in women's studies for over 30 years. She helped to start the Women's Studies program at Ramapo College. She has a doctorate in the Psychology of Women, and has had the experience of growing up during the women's movement.

Kaplan has been with WPU for the past five years and feels that the most significant thing about this month's celebration is the "joining together to recognize women's concerns."

The month's events have been in the planning for a long time. Open meetings have been held since November where all were welcome to share their input and ideas. The individual groups financed their sponsored events and arranged any necessities. Then the master schedule was set up by the Women's Center.

This month's activities and campus wide events involve such groups as the Feminist Collective, SABLE, the Student Government Association, the Women's Studies Department, the Office of Minority Education, the Student

see WOMEN'S page 11

# THE HEAT ZONE TANNING SALON

"20 Minute Vacations Available Daily"

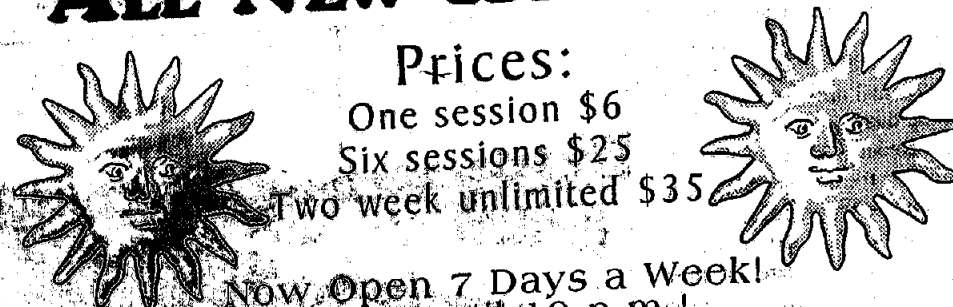
## ALL NEW HOT LAMPS

Prices:

One session \$6

Six sessions \$25

Two week unlimited \$35



Now Open 7 Days a Week!  
Open until 10 p.m.!

1 Month  
Unlimited

for only  
**\$50**

with coupon  
Cannot be combined with any other  
offer. Exp. 4/1/98

**NEXT WEEK:  
SPRING BREAK**

10  
Sessions

for only  
**\$40**

with coupon  
Cannot be combined with any other  
offer. Exp. 4/1/98

ONLY 3 Min. From Campus across from Wayne Hills Mall

**87 BERDAN AVENUE, WAYNE**

**973-305-6700**

## Campus Calendar

Monday, March 2, 1998

Career Development Center - Resume Writing - Morrison Hall Room 146. 5 to 6:30 pm. Call ext. 2281, 2282, 2440 for info.

Tuesday, March 3, 1998

Women's Center - Women's Discussion Group. Meets every Tuesday @ 3:30pm to 4:30 pm. Women's Center: SC 214. Contact: Myra Kaplan @ 2946.

Career Development Center - Resume Writing - Morrison Hall Room 146. 12:30 to 2pm. Call Ext. 2281, 2282, 2440 for info.

Pagan Students Association - Portals: A guided meditation through the imagination of your mind! All welcome. 3:30 pm to 5:30pm. White Hall Lounge. Contact Adrienne @ 973-575-6849.

Career Development Center - Planning for Graduate School - Morrison Hall Room 146. 3:30 to 4:30pm. Call ext. 2281, 2282, 2440 for info.

Wednesday, March 4, 1998

Career Development Center - Interview Techniques - Morrison Hall Room 146. 4:30 to 6pm. Call ext. 2281, 2282, 2440 for info.

Thursday, March 5, 1998

Pagan Students Association - Clan Avalon Handfasting - Film presentation of a Wiccan Wedding between four people. Discussion will follow. 12:30 to 2:00pm. Library Film Auditorium. Contact Adrienne @ 973-575-6849.

Career Development Center - Interview Techniques - Morrison Hall Room 146. 12:30 to 2pm. Contact ext. 2281, 2282, 2440 for info.

## the Beacon

A NEWSPAPER THAT'S CLEARLY FOR YOU

Norman C. DeFilippo  
Editor-In-Chief

Pamela Langan  
News Editor

Ed Erlenmeyer  
Insider Editor

Tim Bornemann  
Assistant Insider Editor

Sylvana Meneses  
Photo Editor

Michael S. Laclair  
Sports Editor

Al Giamarino  
Dave Roe  
Sherri Sage  
Staff Writers

Carolyn Fuge  
Staff Photographer

Matthew Halpern  
Business Manager

Chris Castillo  
Information Coordinator

Raechel Heffers  
Advertising Representative

Michael S. Fox  
Circulation Director

George Robb  
Academic Adviser

Financial Services  
Provided By  
Charlotte O'Brien  
Barbara Stomber

The Beacon is published on Monday and serves Haledon, North Haledon, Wayne and the William Paterson University Campus Community. Business/Editorial offices are located on the campus of William Paterson University in the Student Center, Room 310, Wayne, NJ 07470-073-720-2248. The Beacon receives no money from WPU or its student body and therefore relies solely on advertising revenue to operate.

## Alumni Association seeks volunteers to work at annual Phonathon

By Alexandra Donovski  
News Contributor

*From the 1997-1998 Phonathon, grants totaling \$34,000 were awarded to departments and committees all over campus, and over \$92,000 was awarded to approximately 100 students in the form of scholarships.*

The William Paterson University Alumni Association is holding their annual Phonathon from February 27 to March 26. The Alumni Association is looking for student volunteers to help raise money by calling the WPU Alumni and asking for donations to help fund future student scholarships and grants.

The association is having a special student volunteer week from March 8 to March 12, and they are asking student groups such as fraternities, sororities, teams, clubs,

and individuals, to contribute a few hours of their time to phoning the alumni and soliciting donations.

At the end of the Phonathon, the association will award two cash prizes to the groups and to the individuals who raise the most money and find new donors.

The prizes awarded to the groups will be \$400 and \$200, and for the individuals, it will be \$100 and \$50.

The Alumni Association has existed as a formal organization since the early 1960's, and the Phonathon has been a long-standing tradition at WPU. During the

1997-1998 Phonathon, grants totaling \$34,000 were awarded to departments and committees all over the campus, such as the Child Care Center, University Day Committee, and Catholic Campus Ministry.

Last year, the Alumni Association rewarded approximately 100 students with over \$92,000 in scholarships, and they are asking all recipients of the awards also to come and participate in the Phonathon.

This year, the Alumni Association hopes to reach its goal to raise \$125,000 at the Phonathon, and to raise \$225,000 overall to give back to WPU students, staff and faculty.

The scholarships given by the Alumni Association are academic and activity related.

"There is one for just about every student," said Lysa Martinelli, the director of Alumni

see ALUMNI page 6

## Delta Sigma Theta sorority works hard at WPU with small amount of members

By Matthew Halpern  
Staff Writer

School program, Kwanzaa Prep and Homecoming Night are just a sample of what Deltas do every year.

"Deltas are always doing something," Mullins said. "Our primary goal is service, and we are committed to serving the Paterson area, as well as the private community."

Being a Delta does not only give sorors the chance to work with the community, it also allows for personal introspection. Alicia Simmons, treasurer of the Theta Upsilon chapter, recognizes that the skills she uses now will help her with everything she does.

"Being a Delta has helped me a lot to put things in perspective, think things out and always be understanding," Simmons said. "When I feel like I can't get things done, I think about our history and the struggles that we've gone through to get things done."

According to Simmons, being a Delta is not just about membership. Interested women are those who demonstrate leadership qualities and make an effort to support the events of organizations.

The Theta Upsilon chapter, currently made of three women, has a wealth of leadership, despite its small numbers. Mullins is the current Student Government Association vice president, Simmons is a Club Representative to the SGA Legislature, and the third member, Jasmine Lopez, is a past treasurer for the SGA.

The quality of a Delta is the ability to work hard and balance many endeavors, said Mullins. But with this hard work, there is no desire to flaunt their work. Their hard work and dedication set these women apart from the rest, she added.

"Everyone does not possess qualities for public service and to serve the community," said Mullins. "A Delta woman is someone you should be able to recognize because of their service."

## 'Couch potatoes' raise money



photo by Sylvana Meneses/The Beacon

Members of the Phi Kappa Tau fraternity of William Paterson University recently held a 24 hour fundraiser for the Children's Heart Association. Many of the members could be seen outside the Student Center from Wednesday night until Thursday night watching videos and listening to music to keep busy and warm while battling the cold. With a set-up of couches, chairs, blankets, and an entertainment station with a television and video game set, they showed dedication over 24 hours to raise money for their cause by requesting donations.

## Pagan film series continues on Thursday

The Pagan Students Association (PSA) will present "The Handfasting of Clan Avalon," as the second in its series of Thursday film programs in the Library Film Auditorium on March 5 from 12:30 to 2 p.m. The video features a handfasting (wedding ceremony) conducted in October 1996 at the annual Council of Magical Arts Samhain Festival in Texas. Actual Wiccan ritual is included, written by four partners in the marital unit, and the High Priest explains the various customs and symbols used during the celebration.

An unusual element of this ceremony is that it features the vows of four people uniting in a panfidelitous union, or group marriage. "Most Wiccans and Neopagans practice the same monogamous relationships as the rest of the society," PSA President Adrienne Roy Tollin explains, "but some believe in and practice various forms of polygamous relationships, including polygamy (more than one love), panfidelity (meaning "faithful to all" - a committed loving relationship between more than two partners), and multi-adult expanded families."

"Should government agencies prohibit forms of loving and sharing that do not coincide with certain popular beliefs and ethics? Should loving relationships between consenting adults be under legislative

restrictions in a supposedly 'free' society? Those are some of the topics that may be discussed after the handfasting video is shown," said Tollin. "Whether one is interested in Wiccan rituals or in the issues concerning alternative families, lifestyles and lovestyles, 'The Handfasting of Clan Avalon' is certain to provoke thought and discussion," said Tollin.

The PSA is extending an open invitation to all students and faculty in the William Paterson University community, and especially to members of the Sociology and Anthropology departments.

PSA's regular meetings are held every Tuesday between 11 a.m. and 2 p.m. in room 206 of the Ben Shaun building. The club also hosts guided meditation sessions from 3:30 to 5:30 p.m. on Tuesdays 10 a.m. to noon on Fridays in the White Hall lounge.

These meditations are designed to take participants on amazing explorations of the inner mind that leave people refreshed and empowered. Participants are asked to arrive on time and it is recommended that comfortable clothing be worn. These meditation sessions are free to all participants and light refreshments will be served.

For further information, email Tollin at PaganEarth@aol.com, or phone (973) 575-6849.

Marketing

## AMBITION, DRIVE & CREATIVITY...

WILL BRING US INTO  
THE 21ST CENTURY

ACCOUNT REPRESENTATIVES

Use your degree to start you off in an exciting growth oriented marketing position.

Assist our Acct Execs in all aspects of maintaining current accounts and developing news accounts. Excellent math, organizational and communication skills required. Join our fast-paced work environment and enjoy tremendous growth opportunities.

Join us at our plush corporate HQ in Mahwah, NJ. We offer a competitive compensation & benefits package. Please forward your resume with cover letter to:

Recruiting Manager/ACC  
DIALAMERICA  
MARKETING, INC.  
960 Macarthur Blvd,  
Mahwah, New Jersey 07495



BOE

Fax (201) 327-7687

DIALAMERICA  
MARKETING INC.

the undisputed leader in the telecommunications industry has excellent experienced and entry level marketing career growth opportunities for people with ambition, drive and creativity.

Be a part of an innovative team that will provide the instruction and career guidance you need to move up the ladder of success.



# Opinions & Review

## The Beacon

### EDITORIAL BOARD

Pamela Langan • News Editor  
Ed Erlenmeyer • Insider Editor  
Tim Bornemann • Assistant Insider Editor  
Michael S. Laclair • Sports Editor  
Sylvana Meneses • Photo Editor

Norman C. De Filippo  
Editor-in-Chief

## Mailbag

### Gesture can prevent infection

To the Editor:

This is in response to the article written by Amy Elizabeth Briggs, regarding Tuberculosis.

One paragraph reads, "Tuberculosis is an infectious disease that is spread from person to person by airborne droplets that are either coughed or sneezed up."

The emphasis here is on the fact that people can pass on the infection from coughing or sneezing. While there is an awareness to educate and inform students about the disease, it may also be a very good idea to advise everyone to cover the nose or

mouth when sneezing or coughing. These are very polite and courteous gestures that we all should practice doing.

I have sat in many classes with the students who will yawn, cough or sneeze right in another student's face or within close proximity, without covering the nose or mouth.

If we all were to practice covering the nose or mouth when coughing or sneezing, we may all very well lessen the spread of such infections.

Lorena Wilson-Burke

## The subtleties of language

Whether it is written or oral, human beings' distinct ability to thoroughly communicate ideas, events, and feelings is one of the many important phenomena that set us apart from the animal kingdom. Yet, with all the potential which human beings possess to communicate, miscommunication is still a daily occurrence with immediate and far-reaching consequences.

If one needs to be convinced that miscommunication occurs on a daily basis he need go no further than his good friend. The next time one's good friend and significant other are having an argument ask them both, separately, what happened and you are sure to discover two people with two distinctive, different stories.

So what happened? Is one of them lying; are both of them lying? Possibly but probably not. Are they deliberately telling only part of the truth? Again, possibly but probably not. Most likely, one is merely confronted with two of the many people who do not appreciate the subtleties of language.

However, the consequences of understanding the subtleties of language can be far-reaching. Take the President of the United States, for instance. Mr. Clinton has been accused of a great many things as of late. But one thing which this President will never be

accused of, is not understanding the subtleties of the English language. Is it possible that a politician living in the communication era would not choose his words carefully when defending himself against a serious charge like adultery? Of course not. Then was he being purposefully vague? It seems like the obvious choice.

And what about all the incidents of miscommunications indigenous to William Paterson University? The next time you are walking up or down the stairs of the amphitheater, which does not yet seem to be complete, stop and think. "What exactly did administrators mean when they said this blasphemy of concrete and brick was going to be complete by the end of October? Did they mean construction would stop? Well, probably not because construction was not complete until well after the end of the fall semester. Perhaps the job was so difficult it had to be abandoned." Maybe that was not a case of miscommunication. Who knows?

But, are many people purposefully using language to their advantage in a deviant manner, on a daily basis? That is a difficult question to answer. There are many people who are not skilled at using words; but there are many people who are highly skilled at using words. The tricky part is determining who is who.

### LET US KNOW THAT YOU THINK

What ever you want, go crazy. Write a letter about whatever YOU feel is important.

Letters should be about 50 words long



Letters to the Editor can be e-mailed to [Beacon1@frontier.wilpaterson.edu](mailto:Beacon1@frontier.wilpaterson.edu), faxed to 973-720-2093, or mailed to The Beacon, SC 310 300 Pompton Road Wayne, NJ 07470 and can be no longer than 150 words, columns or op-ed articles should be no longer than 500 words. Letters must be signed. The editor reserves the right to edit for grammar and length. Manuscripts can not be returned. All submissions become the property of The Beacon.

*A Letter to the Who ... oh the Editor*  
Echo! Echo ... echo ... Hello! Hello ... hello ... Is anyone out there?

Perhaps we haven't been very clear. This is how it works: If YOU see something happening on campus which YOU feel isn't a good idea, YOU feel can be changed for the better, or YOU feel is simply ridiculous then YOU write a letter to THE EDITOR explaining how YOU feel about the situation. Then THE BEACON publishes that letter.

Come on, YOU can do it. We know YOU can! We hear

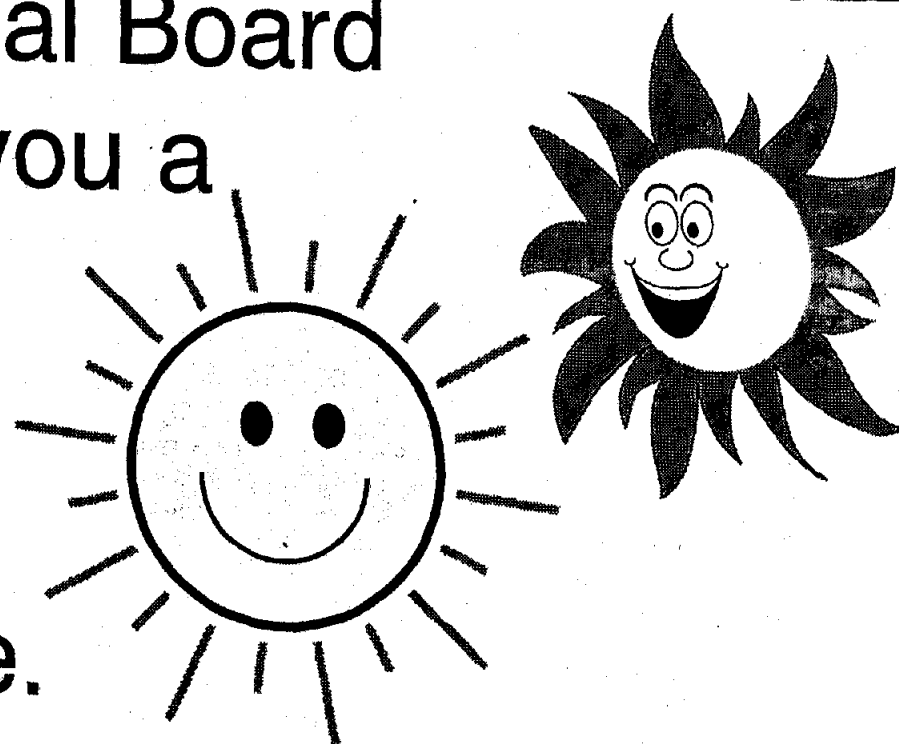
YOU complaining about things all the time.

Don't worry, writing a letter to the editor is more than complaining on paper. By writing a letter to the editor YOU will be reaching administrators. Think of writing a letter to the editor as complaining to the right people.

SO, to paraphrase Grover, from the movie "Kicking and Screaming," if YOU aren't going to do something about what's bothering YOU, don't bother complaining.

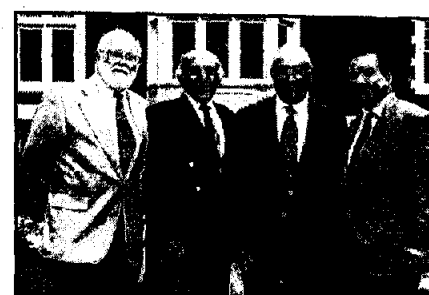
## The Beacon Editorial Board

would like to wish you a safe and restful spring break, filled with a tremendous amount of sunshine.



## NEWS FROM THE OFFICE OF INSTITUTIONAL ADVANCEMENT

### Machuga's Dream Provides Scholarships



Machuga Foundation trustees Bruce Waldman, Joseph Makouj and Albert Dahab (l. to r.) pose with President Arnold Speert (r.) during a campus visit. Not pictured are trustees John Tarrant and Carl Roman.

John Victor Machuga was a thrifty man who had a dream. Growing up in the city of Paterson during the Depression years, his family's struggles during those difficult times dug deep into his memory and charted a life course which many years later would give an important helping hand to three students now enrolled at William Paterson University.

Two years ago the five trustees of the John Victor Machuga Foundation, all life-time friends of Machuga, first got in touch with President Arnold Speert. Their mission was the kind that warms a president's heart.

#### The Machuga Foundation

Machuga's will established a private foundation to support education, the arts, religion, medicine, economics and science.

The trustees, all of whom were close friends of Machuga, told Speert they wanted to fund scholarships at William Paterson. They had gone to see Jeanette Lyde, principal of the Rosa Parks High School of Fine Performing Arts in Paterson,

and she had agreed to help in the selection of scholarship applicants from her school.

Speert passed the good news on to the William Paterson team: Nancy Norville, dean of enrollment management, and Georgia Daniel, assistant dean for scholarships, financial resource planning and community outreach. Working with Lyde and the Machuga Foundation trustees, they selected three Rosa Parks seniors who had applied for the scholarships.

#### Born in Abject Poverty

Who was this man—John Machuga—who lived simply, never married and never spent money on himself? Bruce Waldman, executive director of the Machuga Foundation, who knew him

well, explains, "He was born in poverty in Paterson. He was very frugal; some would call him stingy. But he was my friend so I call him frugal. He invested from the time he was 20 years old. He was an engineer in Paterson for Western Electric, although he didn't have an engineering degree. I think he had an associate of applied science degree from the Newark College of Engineering. Later he got a B.A. and an M.A. in economics from Rutgers/Newark. But he didn't make his money from his jobs; he made it from his investments. He was a genuinely brilliant guy."

#### The Five Trustees

Waldman and Machuga were in business together. In the late '40s and '50s they ran the Atlantic Television Company and International Enterprises, which built houses in Pompton Lakes. Three other trustees, Carl Roman, John Tarrant and Albert Dahab, also were involved in these businesses. Joseph Makouj, the fifth trustee, was also a friend.

Fast forward through the years to the Pegasus Awards ceremony on June 4, 1997, at Rosa Parks High School. Excitement is high. Lyde is center stage announcing the scholarship winners—the three top applicants: Chanel Porchia, Daren Smith and Kenya Young, all now in the second semester of their freshman year at William Paterson. "I was really surprised and overjoyed," exclaims Smith, a business administration major on the dean's list.

But there's more to come. The three scholarships, originally awarded to cover the fall 1997 semester, have been extended to take care of all expenses for the students for the remainder of their undergraduate studies. And in addition, another full scholarship will be given to an outstanding Rosa Parks student this June. All their thanks belong to John Victor Machuga—the man whose dream made higher education a reality.



*Learning from Our Histories: Conversations with Frederick Douglass, Elizabeth Cady Stanton and Sojourner Truth*

**Monday, March 2, 7:00 PM SC Ballroom**

Fred Morsell as Frederick Douglass, "Why I Became a Woman's Rights Man," Reception to follow

**Tuesday, March 3, 11:00 AM - 3:30 PM SC Ballroom**

11:00 AM - Sally Roesch Wagner as Elizabeth Cady Stanton "Why I Organized the First Women's Rights Convention."

12:30 PM - Kathryn Woods as Sojourner Truth "A Woman Ain't I."

2:00 PM - A conversation between the three actors and a panel with Professors Danny Meaders, Evelyn Gonzalez and John Jordan. Refreshments will be served.

Events sponsored by Phosphorus, Women's Center, Sociology Club, Pioneer Players, History Department, SAPB and the Office of Minority Education.

**Tuesday, March 17, 12:30 - 2:00 PM Shea 101**

Kristin Samuelson, Soprano. "Women Who Composed Music: A Vocal Recital" with Colette Valentine, Pianist. Sponsored by the Women's Studies Department, the Music Department and the Women's Center.

**Tuesday, March 17, 7:00 PM Hunziker Black Box Theatre**

*Miles Below Zero*, a play written and directed by Tessa Leigh Derfner and based on the life of Charlotte Perkins Gilman. Sponsored by the English, History, Political Science and Women's Studies Departments and the Women's Center.

**Wednesday, March 18, 4:15 - 6:00 PM Library Auditorium**

Charlotte Bunch, Founder and Executive Director of the Center for Women's Global Leadership "1998: Human Rights Depend on Women's Rights." A Women's History Month and Political Science Department, Human Rights Lecture Event. Sponsored by COLGAE, Political Science Department and Women Center.

**Thursday, March 19**

12:30 PM Hunziker Black Box Theatre - "Dedication to Sisterhood" Poetry and theatre performed by Delta Sigma Theta.

2:00 PM Art Gallery Lounge - Opening of the Juried Women Students' Art Exhibit. Sponsored by Women's Center and Campus Activities.

## William Paterson University

### Women's History Month—March 1998

#### Conversations Across Centuries

**Friday, March 20, 10:00 - 1:00 PM, SC Ballroom**

*Women's Studies Day - "Stepping into the Future"* with the Rosa Parks Gender Equity Players, Dr. Carole Sheffield, winner of the 1997 Carnegie-Mellon Professor of the Year Award, area high school students, and other members of the WPUNJ Woman's Studies faculty. Sponsored by Women's Studies Department.

**Monday, March 23 7:30 PM, Hunziker Theatre**

"*Womyn With Wings*", a choreopoem in two acts. Sponsored by HASA and SABLE.

**Tuesday, March 24**

12:30 PM Library Auditorium - Minnie Bruce Pratt. Sponsored by the Feminist Collective.

4:15 PM SC 203,4,5 - Gish Jen, Chinese American fiction writer and multicultural theorist presents "A Reading and Conversation" Sponsored by Essence and Phosphorus.

**Wednesday March 25, 12:30 - 2:00 PM, Library Auditorium**

Gilda's Club: "Living with Cancer" a talk given by Randy Hale, Program Manager Sponsored by Lambda Theta Alpha Latin sorority.

**Thursday, March 26, 12:30 - 2:00 PM, Science 200 B**

United Science Club's Second Annual Women in Science Lecture with Dr. Catherine Forrester of SUNY Stony Brook "Dinosaurs of Madagascar." Organized by the United Science Club.

**Sunday, March 29, 3:00 PM, Shea Center**

Theatre presentation: *Marvin's Room* by Scott McPherson, directed by Edward Matthews, presented by WPUNJ Performing Arts Resource Unit - Admission fee to performance. Reception to follow. Other performances held 3/26 - 3/31. For tickets and information contact the Shea Center Box Office 973-720-2371.

**Monday, March 30, 7:00 PM SC Ballroom**

*Island Women* - An evening celebration including speakers and a dance ensemble. Sponsored by Caribsa and the Women's Center.

**Tuesday, March 31, 12:30 - 2:00 PM, SC Ballroom**

*Fourth Annual Celebration of WPUNJ Women*, including award to Carole Sheffield, tributes and entertainment. Sponsored by the Women's Center.

Unless otherwise noted, events are free. All events are open to the public. For further information, contact the Women's Center at 973-720-2946.

This program is the result of collaborative planning by the Women's Center, Phosphorus, Campus Activities, History and Women's Studies Departments and many student organizations.

Programs are funded by the Student Government Association, Student Activities Planning Board, Women's Center, Phosphorus, various academic departments, Office of Minority Education and various student groups.

# Catholic Campus Ministry plans events for Lent

The Catholic Campus Ministry Club and Center (CCMC) serving William Paterson University, the students' "home away from home," will be sponsoring several events in preparation of the Easter season.

Continually serving the community, the CCMC plans to join with Alpha Phi Omega and Phi Kappa Theta fraternities in serving at Eva's Kitchen in Paterson on the Fridays of Lent.

The main outreach of the CCMC is the campus wide "Shelter the Homeless" Collection which began on Ash Wednesday, on behalf of agencies that serve the homeless: Eva's Shelter, and Youth Haven, both located in Paterson, and Covenant House of

NJ, located in Newark.

Lent a forty day period of fasting, service to the poor and repentance, began on Ash Wednesday, February 28. "Shelter the Homeless" Collection cans will be distributed at all masses to those who wish to collect during Lent.

All donations collected will be counted and given to representatives of the agencies at the "Appreciation Night Mass" on Sunday, May 3 at 7:30 p.m. at the CCMC.

Besides concentrating on outreach to the community, the CCMC strives for greater self-awareness among the students. A Lent Retreat will be held on Saturday and Sunday, March 28 and 29 at the CCMC. The retreat

focuses on spiritual renewal and social commitment, preparing for Holy Week.

Palm Sunday mass on March 5 will be celebrated in the Performing Arts Lounge on the lower level of the Student Center, at 7:30 p.m. Mass annually features the music of the Our Lady of Victories Gospel Choir in Paterson.

This year it will be highlighted by a Dramatic Presentation of the Passion, under the leadership of Alan Morales, CCMC Music Minister.

Holy Week continues with mass on Holy Thursday at 12:30 p.m.; Good Friday service with Dramatic Presentation of the Passion of Jesus at 3 p.m.; and

Holy Saturday Easter Vigil at 7:30 p.m., all at the CCMC located next to Gate 1 of the university.

Sara Evans, a WPU student and member of the Rite of Christian Initiation of Adults (RCIA) will be baptized into the Catholic Church at the Easter Vigil.

The social aspect of the CCMC continues at the Annual Chapel Fundraising Communion Breakfast, to be held at La Neve's Restaurant, located on Belmont Avenue in Haledon, at 9:30 a.m. This annual event focuses on rais-

ing funds for the construction of a Chapel for the CCMC. The RCIA students will be confirmed at the Communion Breakfast Mass. They are Evans, West Creek; Michael Parent, Lodi; James Haas, West Orange; Vanessa Caro and Anthony Cassisi, Haledon; Elizabeth Peralta, Senaida Peralta, and Alvin Ramos, of Paterson.

The public is invited to all events. For information call (973) 595-6184.

## Alumni Phonathon needs volunteers

from ALUMNI page 1  
Relations.

Anyone can apply for scholarships, and the applications will be available at Alumni Office in March, for the coming year, and are open to all current freshmen, sophomores, and juniors.

Some scholarships that Martinelli would like to highlight, are full tuition scholarship for family of Alumni, two scholarship,

for Education majors with high academic standing, undergraduate fellowship that give full tuition, for a junior or senior, willing to work in the Alumni Office, and one graduate student scholarship specifically for a Communications Disorder majors.

If anyone feels like donating their time to help the Alumni Association, call the Alumni Office at 720-2175, and talk to Martinelli or Connie Alexis-

Laona, the assistant director of the Annual Fund. They have a pre-written script, and let you know who it is you are speaking to.

"The focus of the Alumni Association is to give back to the students," said Alexis-Laona. The Phonathon is good "because the Alumni want to give back to the school they love" said Alexis-Laona.

**Have a wonderful Spring  
Break WPU!**

**The Beacon will return on  
March 23, so be sure to  
pick one up!**

**From the News Staff**

## SPEECH-LANGUAGE PATHOLOGY ENHANCING COMMUNICATION INDEPENDENCE



Seton Hall University's School of Graduate Medical Education offers a superior Master of Science Program in Speech-Language Pathology (SLP)

that provides you with state-of-the-art academic and clinical training opportunities. Through its affiliation with many prestigious clinical sites, it is one of the most comprehensive SLP programs in the nation.

As a student enrolled in the SLP program, you will train to work with patients of all ages in clinical settings, including hospitals, rehabilitation centers, public and private schools, and many others.

This intensive full-time program teaches you how to provide the most effective diagnostic and treatment procedures to those who exhibit communication disorders, while focusing on the latest developments in SLP as they impact changing healthcare and educational practices.

To learn more, call the School of Graduate Medical Education at (973) 761-7145.

Anticipating first class in  
Fall of 1998

**SETON HALL**  
UNIVERSITY

ASHA/CAA Candidacy  
application in process

The Catholic University in New Jersey—Founded in 1856 • 400 South Orange Ave., South Orange, NJ 07079 • <http://www.shu.edu>

# The Insider

Music, Movies, Reviews, Interviews, and much more!

## From Here to the Moon, with Moon Records

By Al Giamarino  
Staff Writer

Located conveniently on East 10th Street in downtown New York is the heart and soul of ska music. With all its recent success, we at **The Beacon** thought we should take a look at just what this is all about.

Moon records has been releasing ska music for over twelve years now. They've become somewhat of an authority on the matter. Moon has definitely formed a staple in which one can always be assured to find nothing but quality music.

It's all ska music, it's all good, would probably be an accurate description of what it is like in the world of Moon.

Founded way back in the early 80's by lead vocalist/guitarist of the top label band, the **Toasters**, Robert "Bucket" Hingley has played a big part of what the music has become.

When Bucket arrived here in the U.S from England way back when, he was very surprised at the lack of ska music. He decided to take matters into his own hands and create a label in which he could release the music he loved so dearly. With such a low budget to work with, Hingley needed to find some help who would work for

virtually nothing to build his label into what it has become today.

Steve Shafer, one of those who took the position, is still here to live and tell about it. Shafer is the Promotions director at Moon and has been there from the very beginning. With the help of his wonderful assistant, Patti Rios, Steve has been effectively passing the word around about the label and its music.

Promoting new releases to commercial and college radio as well as various magazines and newspapers is just one part of what Shafer does. As well as working in his department I had a chance to ask Steve a few questions I thought might be worthy, so here it goes.....

### What is Moon all about?

We're about releasing the best ska music out there from bands that really love ska, for fans who really love ska.

### What bands are you really exited about right now?

We're actually doing a lot of great things with **Easy Big Fella** as of late, Which is great because they kick ass! We also have two great new bands right now, one is from Los Angeles and is called **Mobtown**, and the other is from San Diego and is called **Skanic**.

Great, do you have any comments about labels that have just recently been trying to do what Moon does?

The labels that just started this stuff and are just in it for the money are really just ruining it for everyone else. But there are labels out there who do care about the music. **Asian Man**, **Steady Beat**, and **Jump Start** are some good labels out there.

### Steve, what is the best part of your job?

The best part of my job was working with you Al.

### Now for what he really said....

The best part of my job is releas-

ing music for the bands I love.

Thank-you greatly kind gentleman for your time.

Sir Noah Wildman, another long time Moon employee, is in charge of running the Moon storefront just for starters. He also has a big part in the releasing of most of the labels music. Noah has also been the creator of some of Moon's best compilations including the "New York Beat" comps, as well as "Skankaholics Anonymous" among others.

Since Moon has been so successful as of late, they have decided to create a subsidiary label called **Ska Satellite**.

The purpose of the label is to release music from smaller bands who might not normally get a chance to release an album on a larger label. It gives small bands a chance to get their music out there.

The label also releases music from bands who incorporate ska into other music, such as ska-punk, ska-core, etc. The albums are recorded on a lower budget therefore they can be sold for a much lower price than normal releases.

**The Robustos**, **Critical Mass**, and **Highball Holiday** are some of the bands who have already released albums on Ska Satellite with much more to come in the future.

The great thing about Moon bands is that they love their music so much that they virtually tour all the time. With so many bands touring for so long it becomes almost impossible for there to be a reason for not going to a Moon show.

Playing all across the country as well as the world there is probably always a ska band playing somewhere near where you are. The label frequently holds showcases in which a group of Moon bands as well as various other ska bands come together for a whole day of great music.

The sight of these showcases are held at the Wetlands located in New York City. They definitely always prove to be worth the trip to get there.

Great shows, great bands, great albums, it seems as if the Moon crew has really got something here. So, if you're still unfamiliar with the whole thing you don't even know what your missing.

## What's inside the Insider this week you ask?

• See the wrestling column "In the Ropes" that's got people talking!

Page 9!

• Not sure what albums to buy lately?

Check out our weekly CD review section "Under the Microscope" for some opinions!

Page 9!

## Jersey Seen

By Ed Hennevey  
Insider Editor

If you or anyone you know has a blind love for Jersey, you won't want to miss this. The Insider will periodically be running Jersey Seen, a local music column spotlighting the best of the Jersey scene. It's a must read for anyone who loves the Jersey scene. It's a must read for anyone who loves the Jersey scene. It's a must read for anyone who loves the Jersey scene.

Penultimate  
The Insider

Penultimate plays the role of a rock band with incredible resources and talent. They are the only band in the Jersey scene that can do it. They are the only band in the Jersey scene that can do it. They are the only band in the Jersey scene that can do it.

Penultimate plays the role of a rock band with incredible resources and talent. They are the only band in the Jersey scene that can do it. They are the only band in the Jersey scene that can do it. They are the only band in the Jersey scene that can do it.

Penultimate plays the role of a rock band with incredible resources and talent. They are the only band in the Jersey scene that can do it. They are the only band in the Jersey scene that can do it. They are the only band in the Jersey scene that can do it.

Penultimate plays the role of a rock band with incredible resources and talent. They are the only band in the Jersey scene that can do it. They are the only band in the Jersey scene that can do it. They are the only band in the Jersey scene that can do it.

Penultimate plays the role of a rock band with incredible resources and talent. They are the only band in the Jersey scene that can do it. They are the only band in the Jersey scene that can do it. They are the only band in the Jersey scene that can do it.

Penultimate plays the role of a rock band with incredible resources and talent. They are the only band in the Jersey scene that can do it. They are the only band in the Jersey scene that can do it. They are the only band in the Jersey scene that can do it.

Penultimate plays the role of a rock band with incredible resources and talent. They are the only band in the Jersey scene that can do it. They are the only band in the Jersey scene that can do it. They are the only band in the Jersey scene that can do it.

Penultimate plays the role of a rock band with incredible resources and talent. They are the only band in the Jersey scene that can do it. They are the only band in the Jersey scene that can do it. They are the only band in the Jersey scene that can do it.

Penultimate plays the role of a rock band with incredible resources and talent. They are the only band in the Jersey scene that can do it. They are the only band in the Jersey scene that can do it. They are the only band in the Jersey scene that can do it.

Penultimate plays the role of a rock band with incredible resources and talent. They are the only band in the Jersey scene that can do it. They are the only band in the Jersey scene that can do it. They are the only band in the Jersey scene that can do it.

Penultimate plays the role of a rock band with incredible resources and talent. They are the only band in the Jersey scene that can do it. They are the only band in the Jersey scene that can do it. They are the only band in the Jersey scene that can do it.

Penultimate plays the role of a rock band with incredible resources and talent. They are the only band in the Jersey scene that can do it. They are the only band in the Jersey scene that can do it. They are the only band in the Jersey scene that can do it.

Penultimate plays the role of a rock band with incredible resources and talent. They are the only band in the Jersey scene that can do it. They are the only band in the Jersey scene that can do it. They are the only band in the Jersey scene that can do it.

Penultimate plays the role of a rock band with incredible resources and talent. They are the only band in the Jersey scene that can do it. They are the only band in the Jersey scene that can do it. They are the only band in the Jersey scene that can do it.

Penultimate plays the role of a rock band with incredible resources and talent. They are the only band in the Jersey scene that can do it. They are the only band in the Jersey scene that can do it. They are the only band in the Jersey scene that can do it.

Penultimate plays the role of a rock band with incredible resources and talent. They are the only band in the Jersey scene that can do it. They are the only band in the Jersey scene that can do it. They are the only band in the Jersey scene that can do it.

Penultimate plays the role of a rock band with incredible resources and talent. They are the only band in the Jersey scene that can do it. They are the only band in the Jersey scene that can do it. They are the only band in the Jersey scene that can do it.

Penultimate plays the role of a rock band with incredible resources and talent. They are the only band in the Jersey scene that can do it. They are the only band in the Jersey scene that can do it. They are the only band in the Jersey scene that can do it.

Penultimate plays the role of a rock band with incredible resources and talent. They are the only band in the Jersey scene that can do it. They are the only band in the Jersey scene that can do it. They are the only band in the Jersey scene that can do it.

Penultimate plays the role of a rock band with incredible resources and talent. They are the only band in the Jersey scene that can do it. They are the only band in the Jersey scene that can do it. They are the only band in the Jersey scene that can do it.

Penultimate plays the role of a rock band with incredible resources and talent. They are the only band in the Jersey scene that can do it. They are the only band in the Jersey scene that can do it. They are the only band in the Jersey scene that can do it.

Penultimate plays the role of a rock band with incredible resources and talent. They are the only band in the Jersey scene that can do it. They are the only band in the Jersey scene that can do it. They are the only band in the Jersey scene that can do it.

Penultimate plays the role of a rock band with incredible resources and talent. They are the only band in the Jersey scene that can do it. They are the only band in the Jersey scene that can do it. They are the only band in the Jersey scene that can do it.

Penultimate plays the role of a rock band with incredible resources and talent. They are the only band in the Jersey scene that can do it. They are the only band in the Jersey scene that can do it. They are the only band in the Jersey scene that can do it.

Penultimate plays the role of a rock band with incredible resources and talent. They are the only band in the Jersey scene that can do it. They are the only band in the Jersey scene that can do it. They are the only band in the Jersey scene that can do it.

Penultimate plays the role of a rock band with incredible resources and talent. They are the only band in the Jersey scene that can do it. They are the only band in the Jersey scene that can do it. They are the only band in the Jersey scene that can do it.

Penultimate plays the role of a rock band with incredible resources and talent. They are the only band in the Jersey scene that can do it. They are the only band in the Jersey scene that can do it. They are the only band in the Jersey scene that can do it.

Penultimate plays the role of a rock band with incredible resources and talent. They are the only band in the Jersey scene that can do it. They are the only band in the Jersey scene that can do it. They are the only band in the Jersey scene that can do it.

Penultimate plays the role of a rock band with incredible resources and talent. They are the only band in the Jersey scene that can do it. They are the only band in the Jersey scene that can do it. They are the only band in the Jersey scene that can do it.

Penultimate plays the role of a rock band with incredible resources and talent. They are the only band in the Jersey scene that can do it. They are the only band in the Jersey scene that can do it. They are the only band in the Jersey scene that can do it.

Penultimate plays the role of a rock band with incredible resources and talent. They are the only band in the Jersey scene that can do it. They are the only band in the Jersey scene that can do it. They are the only band in the Jersey scene that can do it.

Penultimate plays the role of a rock band with incredible resources and talent. They are the only band in the Jersey scene that can do it. They are the only band in the Jersey scene that can do it. They are the only band in the Jersey scene that can do it.

Penultimate plays the role of a rock band with incredible resources and talent. They are the only band in the Jersey scene that can do it. They are the only band in the Jersey scene that can do it. They are the only band in the Jersey scene that can do it.

Penultimate plays the role of a rock band with incredible resources and talent. They are the only band in the Jersey scene that can do it. They are the only band in the Jersey scene that can do it. They are the only band in the Jersey scene that can do it.

Penultimate plays the role of a rock band with incredible resources and talent. They are the only band in the Jersey scene that can do it. They are the only band in the Jersey scene that can do it. They are the only band in the Jersey scene that can do it.

Penultimate plays the role of a rock band with incredible resources and talent. They are the only band in the Jersey scene that can do it. They are the only band in the Jersey scene that can do it. They are the only band in the Jersey scene that can do it.

Penultimate plays the role of a rock band with incredible resources and talent. They are the only band in the Jersey scene that can do it. They are the only band in the Jersey scene that can do it. They are the only band in the Jersey scene that can do it.

Penultimate plays the role of a rock band with incredible resources and talent. They are the only band in the Jersey scene that can do it. They are the only band in the Jersey scene that can do it. They are the only band in the Jersey scene that can do it.

Penultimate plays the role of a rock band with incredible resources and talent. They are the only band in the Jersey scene that can do it. They are the only band in the Jersey scene that can do it. They are the only band in the Jersey scene that can do it.

Penultimate plays the role of a rock band with incredible resources and talent. They are the only band in the Jersey scene that can do it. They are the only band in the Jersey scene that can do it. They are the only band in the Jersey scene that can do it.

Penultimate plays the role of a rock band with incredible resources and talent. They are the only band in the Jersey scene that can do it. They are the only band in the Jersey scene that can do it. They are the only band in the Jersey scene that can do it.

Penultimate plays the role of a rock band with incredible resources and talent. They are the only band in the Jersey scene that can do it. They are the only band in the Jersey scene that can do it. They are the only band in the Jersey scene that can do it.

Penultimate plays the role of a rock band with incredible resources and talent. They are the only band in the Jersey scene that can do it. They are the only band in the Jersey scene that can do it. They are the only band in the Jersey scene that can do it.

Penultimate plays the role of a rock band with incredible resources and talent. They are the only band in the Jersey scene that can do it. They are the only band in the Jersey scene that can do it. They are the only band in the Jersey scene that can do it.

Penultimate plays the role of a rock band with incredible resources and talent. They are the only band in the Jersey scene that can do it. They are the only band in the Jersey scene that can do it. They are the only band in the Jersey scene that can do it.

Penultimate plays the role of a rock band with incredible resources and talent. They are the only band in the Jersey scene that can do it. They are the only band in the Jersey scene that can do it. They are the only band in the Jersey scene that can do it.

Penultimate plays the role of a rock band with incredible resources and talent. They are the only band in the Jersey scene that can do it. They are the only band in the Jersey scene that can do it. They are the only band in the Jersey scene that can do it.

Penultimate plays the role of a rock band with incredible resources and talent. They are the only band in the Jersey scene that can do it. They are the only band in the Jersey scene that can do it. They are the only band in the Jersey scene that can do it.

Penultimate plays the role of a rock band with incredible resources and talent. They are the only band in the Jersey scene that can do it. They are the only band in the Jersey scene that can do it. They are the only band in the Jersey scene that can do it.

Penultimate plays the role of a rock band with incredible resources and talent. They are the only band in the Jersey scene that can do it. They are the only band in the Jersey scene that can do it. They are the only band in the Jersey scene that can do it.

Penultimate plays the role of a rock band with incredible resources and talent. They are the only band in the Jersey scene that can do it. They are the only band in the Jersey scene that can do it. They are the only band in the Jersey scene that can do it.

Penultimate plays the role of a rock band with incredible resources and talent. They are the only band in the Jersey scene that can do it. They are the only band in the Jersey scene that can do it. They are the only band in the Jersey scene that can do it.

Penultimate plays the role of a rock band with incredible resources and talent. They are the only band in the Jersey scene that can do it. They are the only band in the Jersey scene that can do it. They are the only band in the Jersey scene that can do it.

Penultimate plays the role of a rock band with incredible resources and talent. They are the only band in the Jersey scene that can do it. They are the only band in the Jersey scene that can do it. They are the only band in the Jersey scene that can do it.

Penultimate plays the role of a rock band with incredible resources and talent. They are the only band in the Jersey scene that can do it. They are the only band in the Jersey scene that can do it. They are the only band in the Jersey scene that can do it.

Penultimate plays the role of a rock band with incredible resources and talent. They are the only band in the Jersey scene that can do it. They are the only band in the Jersey scene that can do it. They are the only band in the Jersey scene that can do it.

Penultimate plays the role of a rock band with incredible resources and talent. They are the only band in the Jersey scene that can do it. They are the only band in the Jersey scene that can do it. They are the only band in the Jersey scene that can do it.

Penultimate plays the role of a rock band with incredible resources and talent. They are the only band in the Jersey scene that can do it. They are the only band in the Jersey scene that can do it. They are the only band in the Jersey scene that can do it.

Penultimate plays the role of a rock band with incredible resources and talent. They are the only band in the Jersey scene that can do it. They are the only band in the Jersey scene that can do it. They are the only band in the Jersey scene that can do it.

Penultimate plays the role of a rock band with incredible resources and talent. They are the only band in the Jersey scene that can do it. They are the only band in the Jersey scene that can do it. They are the only band in the Jersey scene that can do it.

Penultimate plays the role of a rock band with incredible resources and talent. They are the only band in the Jersey scene that can do it. They are the only band in the Jersey scene that can do it. They are the only band in the Jersey scene that can do it.

Penultimate plays the role of a rock band with incredible resources and talent. They are the only band in the Jersey scene that can do it. They are the only band in the Jersey scene that can do it. They are the only band in the Jersey scene that can do it.

Penultimate plays the role of a rock band with incredible resources and talent. They are the only band in the Jersey scene that can do it. They are the only band in the Jersey scene that can do it. They are the only band in the Jersey scene that can do it.

Penultimate plays the role of a rock band with incredible resources and talent. They are the only band in the Jersey scene that can do it. They are the only band in the Jersey scene that can do it. They are the only band in the Jersey scene that can do it.

Penultimate plays the role of a rock band with incredible resources and talent. They are the only band in the Jersey scene that can do it. They are the only band in the Jersey scene that can do it. They are the only band in the Jersey scene that can do it.

Penultimate plays the role of a rock band with incredible resources and talent. They are the only band in the Jersey scene that can do it. They are the only band in the Jersey scene that can do it. They are the only band in the Jersey scene that can do it.

Penultimate plays the role of a rock band with incredible resources and talent. They are the only band in the Jersey scene that can do it. They are the only band in the Jersey scene that can do it. They are the only band in the Jersey scene that can do it.

Penultimate plays the role of a rock band with incredible resources and talent. They are the only band in the Jersey scene that can do it. They are the only band in the Jersey scene that can do it. They are the only band in the Jersey scene that can do it.

Penultimate plays the role of a rock band with incredible resources and talent. They are the only band in the Jersey scene that can do it. They are the only band in the Jersey scene that can do it. They are the only band in the Jersey scene that can do it.

Penultimate plays the role of a rock band with incredible resources and talent. They are the only band in the Jersey scene that can do it. They are the only band in the Jersey scene that can do it. They are the only band in the Jersey scene that can do it.

Penultimate plays the role of a rock band with incredible resources and talent. They are the only band in the Jersey scene that can do it. They are the only band in the Jersey scene that can do it. They are the only band in the Jersey scene that can do it.

Penultimate plays the role of a rock band with incredible resources and talent. They are the only band in the Jersey scene that can do it. They are the only band in the Jersey scene that can do it. They are the only band in the Jersey scene that can do it.

Penultimate plays the role of a rock band with incredible resources and talent. They are the only band in the Jersey scene that can do it. They are the only band in the Jersey scene that can do it. They are the only band in the Jersey scene that can do it.

Penultimate plays the role of a rock band with incredible resources and talent. They are the only band in the Jersey scene that can do it. They are the only band in the Jersey scene that can do it. They are the only band in the Jersey scene that can do it.

Penultimate plays the role of a rock band with incredible resources and talent. They are the only band in the Jersey scene that can do it. They are the only band in the Jersey scene that can do it. They are the only band in the Jersey scene that can do it.

Penultimate plays the role of a rock band with incredible resources and talent. They are the only band in the Jersey scene that can do it. They are the only band in the Jersey scene that can do it. They are the only band in the Jersey scene that can do it.

Penultimate plays the role of a rock band with incredible resources and talent. They are the only band in the Jersey scene that can do it. They are the only band in the Jersey scene that can do it. They are the only band in the Jersey scene that can do it.

Penultimate plays the role of a rock band with incredible resources and talent. They are the only band in the Jersey scene that can do it. They are the only band in the Jersey scene that can do it. They are the only band in the Jersey scene that can do it.

Penultimate plays the role of a rock band with incredible resources and talent. They are the only band in the Jersey scene that can do it. They are the only band in the Jersey scene that can do it. They are the only band in the Jersey scene that can do it.

Penultimate plays the role of a rock band with incredible resources and talent. They are the only band in the Jersey scene that can do it. They are the only band in the Jersey scene that can do it. They are the only band in the Jersey scene that can do it.

Penultimate plays the role of a rock band with incredible resources and talent. They are the only band in the Jersey scene that can do it. They are the only band in the Jersey scene that can do it. They are the only band in the Jersey scene that can do it.

Penultimate plays the role of a rock band with incredible resources and talent. They are the only band in the Jersey scene that can do it. They are the only band in the Jersey scene that can do it. They are the only band in the Jersey scene that can do it.

Penultimate plays the role of a rock band with incredible resources and talent. They are the only band in the Jersey scene that can do it. They are the only band in the Jersey scene that can do it. They are the only band in the Jersey scene that can do it.

Penultimate plays the role of a rock band with incredible resources and talent. They are the only band in the Jersey scene that can do it. They are the only band in the Jersey scene that can do it. They are the only band in the Jersey scene that can do it.

Penultimate plays the role of a rock band with incredible resources and talent. They are the only band in the Jersey scene that can do it. They are the only band in the Jersey scene that can do it. They are the only band in the Jersey scene that can do it.

Penultimate plays the role of a rock band with incredible resources and talent. They are the only band in the Jersey scene that can do it. They are the only band in the Jersey scene that can do it. They are the only band in the Jersey scene that can do it.

Penultimate plays the role of a rock band with incredible resources and talent. They are the only band in the Jersey scene that can do it. They are the only band in the Jersey scene that can do it. They are the only band in the Jersey scene that can do it.

Penultimate plays the role of a rock band with incredible resources and talent. They are the only band in the Jersey scene that can do it. They are the only band in the Jersey scene that can do it. They are the only band in the Jersey scene that can do it.

Penultimate plays the role of a rock band with incredible resources and talent. They are the only band in the Jersey scene that can do it. They are the only band in the Jersey scene that can do it. They are the only band in the Jersey scene that can do it.

Penultimate plays the role of a rock band with incredible resources and talent. They are the only band in the Jersey scene that can do it. They are the only band in the Jersey scene that can do it. They are the only band in the Jersey scene that can do it.

Penultimate plays the role of a rock band with incredible resources and talent. They are the only band in the Jersey scene that can do it. They are the only band in the Jersey scene that can do it. They are the only band in the Jersey scene that can do it.

Penultimate plays the role of a rock band with incredible resources and talent. They are the only band in the Jersey scene that can do it. They are the only band in the Jersey scene that can do it. They are the only band in the Jersey scene that can do it.

Penultimate plays the role of a rock band with incredible resources and talent. They are the only band in the Jersey scene that can do it. They are the only band in the Jersey scene that can do it. They are the only band in the Jersey scene that can do it.

Penultimate plays the role of a rock band with incredible resources and talent. They are the only band in the Jersey scene that can do it. They are the only band in the Jersey scene that can do it. They are the only band in the Jersey scene that can do it.

Penultimate plays the role of a rock band with incredible resources and talent. They are the only band in the Jersey scene that can do it. They are the only band in the Jersey scene that can do it. They are the only band in the Jersey scene that can do it.

Penultimate plays the role of a rock band with incredible resources and talent. They are the only band in the Jersey scene that can do it. They are the only band in the Jersey scene that can do it. They are the only band in the Jersey scene that can do it.

Penultimate plays the role of a rock band with incredible resources and talent. They are the only band in the Jersey scene that can do it. They are the only band in the Jersey scene that can do it. They are the only band in the Jersey scene that can do it.

Penultimate plays the role of a rock band with incredible resources and talent. They are the only band in the Jersey scene that can do it. They are the only band in the Jersey scene that can do it. They are the only band in the Jersey scene that can do it.

Penultimate plays the role of a rock band with incredible resources and talent. They are the only band in the Jersey scene that can do it. They are the only band in the Jersey scene that can do it. They are the only band in the Jersey scene that can do it.

Penultimate plays the role of a rock band with incredible resources and talent. They are the only band in the Jersey scene that can do it. They are the only band in the Jersey scene that can do it. They are the only band in the Jersey scene that can do it.

Penultimate plays the role of a rock band with incredible resources and talent. They are the only band in the Jersey scene that can do it. They are the only band in the Jersey scene that can do it. They are the only band in the Jersey scene that can do it.

Penultimate plays the role of a rock band with incredible resources and talent. They are the only band in the Jersey scene that can do it. They are the only band in the Jersey scene that can do it. They are the only band in the Jersey scene that can do it.

Penultimate plays the role of a rock band with incredible resources and talent. They are the only band in the Jersey scene that can do it. They are the only band in the Jersey scene that can do it. They are the only band in the Jersey scene that can do it.

Penultimate plays the role of a rock band with incredible resources and talent. They are the only band in the Jersey scene that can do it. They are the only band in the Jersey scene that can do it. They are the only band in the Jersey scene that can do it.

Penultimate plays the role of a rock band with incredible resources and talent. They are the only band in the Jersey scene that can do it. They are the only band in the Jersey scene that can do it. They are the only band in the Jersey scene that can do it.

Penultimate plays the role of a rock band with incredible resources and talent. They are the only band in the Jersey scene that can do it. They are the only band in the Jersey scene that can do it. They are the only band in the Jersey scene that can do it.

Penultimate plays the role of a rock band with incredible resources and talent. They are the only band in the Jersey scene that can do it. They are the only band in the Jersey scene that can do it. They are the only band in the Jersey scene that can do it.

Penultimate plays the role of a rock band with incredible resources and talent. They are the only band in the Jersey scene that can do it. They are the only band in the Jersey scene that can do it. They are the only band in the Jersey scene that can do it.

Penultimate plays the role of a rock band with incredible resources and talent. They are the only band in the Jersey scene that can do it. They are the only band in the Jersey scene that can do it. They are the only band in the Jersey scene that can do it.

Penultimate plays the role of a rock band with incredible resources and talent. They are the only band in the Jersey scene that can do it. They are the only band in the Jersey scene that can do it. They are the only band in the Jersey scene that can do it.

Penultimate plays the role of a rock band with incredible resources and talent. They are the only band in the Jersey scene that can do it. They are the only band in the Jersey scene that can do it. They are the only band in the Jersey scene that can do it.

Penultimate plays





Matthew Marino  
Killed by a drunk driver  
on September 29, 1992  
on Roundtree Lane  
in Melville, New York.



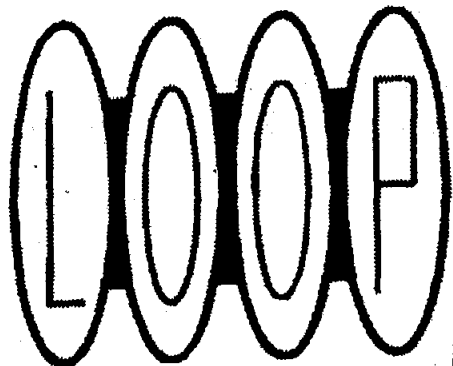
friends don't let friends drive drunk



## BANDS INFO SHEET

Bands must submit a tape either in person, to me, Janice Rainford, or into my mailbox in Don Phelps' office in Campus Activities. The latest that tapes will be accepted in 5:00 p.m. on April 2. Tapes arriving after that time will not be considered for Musicfest. Once the tapes are received, a committee ranks the music on a 1-10 scale, and the four bands with the highest tallies will be the bands performing this year. Musicfest is on Wed., April 22, and the bands selected will play for forty minutes. A prize will be announced once all things for Musicfest are budgeted. It is preferred that bands have a sponsor, whether it be a Greek or a Club on campus, and upon announcement of bands playing, they will have to sign a contract accepting that they will be playing that day. A soundman is provided and members of the selected bands must bring their own instruments. When handing in your tapes, make sure it is re-wound to the song that you would prefer for the committee to hear.

Thank you  
Janice Rainford  
Musicfest Chair  
Instrumentals Not Accepted



Loop Lounge



SUPERSONIC SOUND

SUBTERRANEAN GROOVES

LADIES FREE ADMISSION

50 DRAFTS \$2.00 SOL \$2.00 JAGR

**EVERY THURSDAY  
FREE LIVE SHOWS  
& \$2.00 IMPORT PINTS**

Thursday, March 5th  
**A.K.P.**

Thursday, March 12th  
**THE SKELS**

Thursday, March 19th  
**RUBBER JOHNNY**

Check us out on the web  
[www.looplounge.com](http://www.looplounge.com)

**FRIDAYS & SATURDAYS  
FREE ADMISSION  
\$1.00 Bar Drinks & Coors Drafts  
Until Midnight  
D.J.'s Play The Smart Dance Mix  
Open Wed.- Sat. Till 3 AM**

Directions from campus: Rt. 46 East to Rt. 3 East to Passaic Ave. Nutley/Passaic exit, go to right of ramp, go three traffic lights & make a left, (Van Houten Ave.) Go to first traffic light, make a right onto Broadway. Loop is on the right.

373 BROADWAY PASSAIC PARK, NJ 973-365-0807

## In the Ropes

By Tim Bornemann  
Assistant Insider Editor

Well, I went 6-3 with my *Superbrawl* predictions last week. Not bad, but unfortunately the three I were wrong about were the three I most wanted to be right about. It's a crime that Chris Benoit still doesn't have a title.

But on to the next Pay Per View, *Uncensored*. I'll take place on March 15th. I don't know about anyone else, but I liked it better when there were only 2 or three Pay Per Views a year. Not only was it less expensive, but it gave the various federations more time to develop feuds and angles. Three weeks between Pay Per Views is just a little too quick for me, even though *Uncensored* has some promising matches lined up.

Hulk Hogan has moved away from his feud with Sting (for now anyway) and is currently involved in a feud with Randy "Macho Man" Savage. This will culminate in a steel cage match between the two at *Uncensored*. Though

Savage is still technically a member of the nWo, I'm sure he'll be completely removed from this group after the cage match.

Sting will defend his newly won Heavyweight Title against the man who won the World War Three battle royal, Scott Hall. I can't see a title change occurring. WCW has been working this Sting angle for over a year and a half. I just can't see him dropping the belt after only three weeks.

Speaking of these four men, Hogan and Scott Hall will tag team against Sting and Savage on Monday Nitro this week. Look for lots of nWo involvement. This Nitro is taking place in Philadelphia and I'll be attending the event in person. In next week's column I'll be describing the differences between watching Pro Wrestling on TV, and seeing it in person.

Also announced for *Uncensored* is the rematch between the Giant and Kevin Nash. This will be the Giant's first appearance since he was injured in February by a Kevin



Nash Powerbomb. Since this incident, WCW has banned Nash's trademark finishing move. Hopefully WCW will realize that this banning of the Powerbomb is just stupid. This angle is not generating any heat, it's just generating lots of stupidity.

On Thursday Thunder I expect Diamond Dallas Page to lose the U.S. Title to Raven. More than likely it will be due to outside interference. This will set up the Diamond Dallas Page vs. Raven vs. Chris Benoit Three Way Dance that is to take place at *Uncensored*. All three wrestlers will be fighting each other at the same time. Both Raven and Benoit spent some time in ECW so both should be familiar with this type of match. It should be interesting at the very least. Hopefully WCW will finally smarten up and give Benoit a title. We'll just have to wait and see.

kevin bacon • matt dillon • neve campbell

They're dying  
to play  
with you.

# wild things



at theatres soon

## Under the Microscope

Janice

Janice

(The Wheel of Fortune)

From the opening moments of "The Wheel of Fortune" with its high energy and fast pace, it's clear that Janice is not your typical act of the road. Her unique style and her ability to connect with the audience is what sets her apart from the rest of the crowd. She's got a lot of talent, and she's got a lot of confidence. She's got a lot of things to offer, and she's got a lot of things to say. She's got a lot of things to offer, and she's got a lot of things to say. She's got a lot of things to offer, and she's got a lot of things to say.

The Dish

Where Shave Cream Becomes Push

(Polydora)

"Where Shave Cream Becomes Push" is a song that's got a lot of things to offer. It's got a lot of things to offer, and it's got a lot of things to say. It's got a lot of things to offer, and it's got a lot of things to say. It's got a lot of things to offer, and it's got a lot of things to say. It's got a lot of things to offer, and it's got a lot of things to say. It's got a lot of things to offer, and it's got a lot of things to say.

Screaching Wreath

Major Label Debut

(Huge Records/Atlantic)

"Screaching Wreath" is a song that's got a lot of things to offer. It's got a lot of things to offer, and it's got a lot of things to say. It's got a lot of things to offer, and it's got a lot of things to say. It's got a lot of things to offer, and it's got a lot of things to say. It's got a lot of things to offer, and it's got a lot of things to say. It's got a lot of things to offer, and it's got a lot of things to say.

# Community Mental Health Opportunities

Barnert Hospital, a 256 bed acute care community hospital is pleased to announce the following opportunities in our Access Program. Access is a state-wide program providing specialized mental health services to deaf individuals and their families. We provide a range of services, including outpatient, partial care, psych emergency services 24 hour/day, consultation and education, and residence. Our talented staff have fluency in American Sign Language (ASL), along with backgrounds in counseling, social work and rehabilitation. We also proudly employ hearing and hearing impaired personnel.

**Residential Counselor**  
HS diploma required/BA preferred, ability to work evenings/weekends/holidays, beginner ASL Skills or better, and valid N.J. driver's license required. Experience with developmentally disabled preferred.

**Mental Health Clinician**  
BA in Human Services or related field with ASL fluency required. Experience with either mentally ill/deaf/developmentally disabled preferred.

**Sign Language Interpreter**  
Registry of Interpreters for the Deaf (RID)/Certified or Div. of Deaf Hard of Hearing in N.J. screened interpreter. HS diploma required/BA preferred and a valid N.J. driver's license required. Minimum 3 years interpreting experience preferred. Mental Health interpreting a plus.

**Senior Mental Health Interpreter**  
MSW/MA in Social Work or Counseling required, minimum 3 years experience in treating deaf population with mental illness, ASL fluency and a valid N.J. driver's license required. Must be available for emergency on-call response.

**Case Manager**  
MSW/BA with mental health experience, fluent ASL skills and N.J. driver's license required. Will handle integrated case management.

We offer a competitive salary and comprehensive benefit package and an unmatched professional environment. Please mail/fax resume to: Human Resources, Barnert Hospital, 680 Broadway, Paterson, NJ 07514. Fax: 973-279-2924. EOE.



www.ups.com

Gain a real sense of financial independence working as a permanent part-time Package Handler with UPS. We share our success with our team members by providing:

- Excellent wages
- Weekends Off
- 3-5 hours a day
- Tuition reimbursement for selected shifts
- Medical, dental, vision and prescription coverage

Add that to the experience you'll gain working for a prestigious company, and you've got the perfect job.

To find out about current opportunities at a UPS Facility near you please contact your Career Placement Office or call our toll-free number. EOE/M/F



United Parcel Service

You handle this package.

...And we'll handle this one.

## AVAILABLE SHIFTS:

**PRE-LOAD SHIFT**  
Begins at 4:00am

**\*DAY SHIFT**  
Begins at 10:00am

**TWILIGHT SHIFT**  
Begins at 5:00pm

**\*MIDNIGHT SHIFT**  
Begins at 11:00pm

**1-888-WORK-UPS**

\* These shifts not available at all facilities.

# Emergency phones working



photo by Sylvana Meneses/ The Beacon

The long-awaited Blue Light emergency phone system has finally been installed and the many phones are working just fine.

Located on various parts of campus, the blue light on the top makes it possible for Campus Police to locate which phone a person is calling from, due to the fact that it blinks when activate.

In addition, the lights on each phone can be seen at a distance from each other.

This phone pictured to the left stands behind the Student Center on the walkway to the Science Building.

Bob Lee Messer, Student Government Association president, is thrilled to finally see the phones installed and working properly.

# Women's History Month full of events for WPU community to celebrate

from WOMEN'S page 1

Activities Programming Board, the United Science Club, the History Department, Essence, COLGAF, Caribsa, Delta Sigma Theta, Lambda Theta Alpha, Pioneer Players, and many others.

Most of the events were arranged by the individual groups which gave the schedule much diversity. The first of these events will be conversations with Frederick Douglass, Elizabeth Cady Stanton, and Sojourner Truth.

Actors will be dressing the part of these historical figures and using their actual words and opinions to speak about the women's movements. Afterwards there will be a panel discussion between the three actors and a group of professors.

Another event scheduled is an art exhibit with the work of female students titled, "Dedication to Sisterhood." It will be a showcase of poetry, lectures, plays, and theatre sponsored by the Delta Sigma Theta sorority.

Kaplan added, "I feel really excited. We are looking forward to sharing these events with the

entire campus."

At the end of the month, the activities will come to an end with the "Fourth Annual Celebration of William Paterson University Women." This event is a celebration of the community where all are welcome to perform a song, recite poetry, or just to speak about various topics.

Members of the audience will also have the opportunity to write tributes to individual idols, such as their own mothers or historic women. These written tributes will be displayed and then mailed to the individual.

Professor Barbara Sandberg from the Women's Studies Department has been with WPU since the women's program was started.

Sandberg said she feels the most significant part of this month's celebration is, "To bring to people's attention that throughout history women have not had a voice, and we need to celebrate the women who have spoken out even though it may have cost them their lives."

# Work for The Beacon!

There are various positions available on the staff, including:  
**COPY EDITOR, PROOFREADER, NEWS WRITERS, SPORTS**

**WRITERS, PHOTOGRAPHERS, ENTERTAINMENT WRITERS,**

**WEB PAGE MANAGER ...AND MANY MORE!**

**Call today and grasp this great opportunity to gain experience with a newspaper!**

**Don't wait! The semester is almost over!**

**Call 720-2576 or come to The Beacon office in Student Center Room 310.**

Calling All Students ... Calling All Students

**TUNE IN TO "SGA TOWN TALK" LIVE EVERY MONDAY FROM 4 - 6 P.M.**

**ON WCRN, CAMPUS CABLE CHANNEL 20**

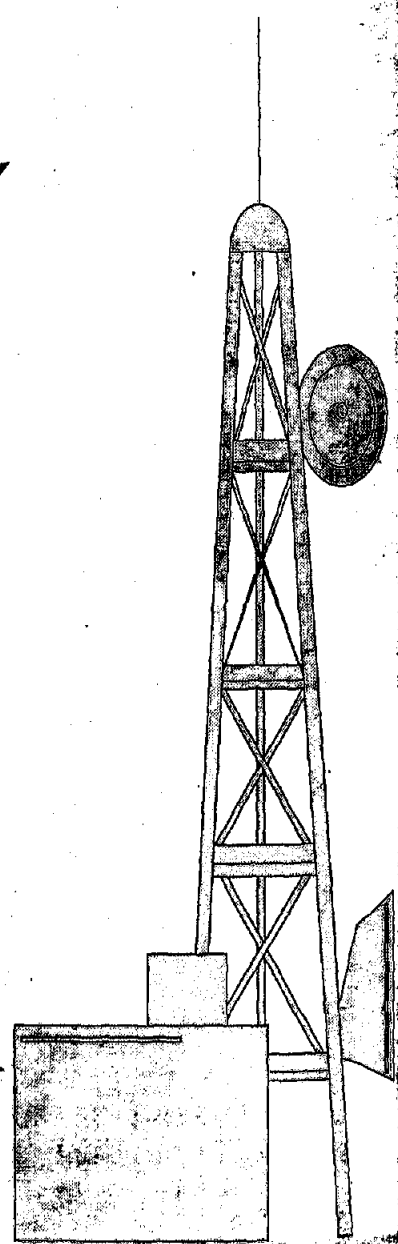
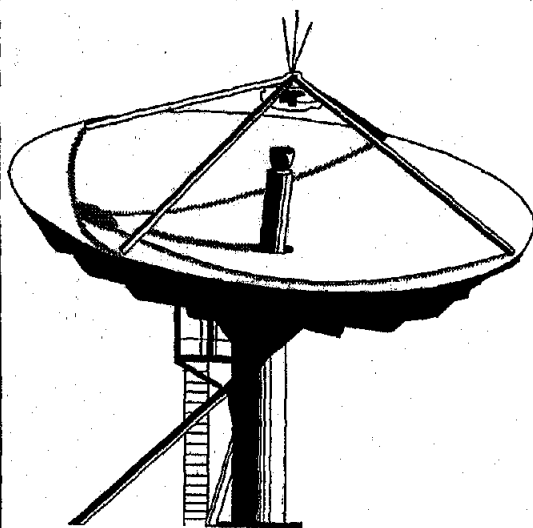
→ **Updates on SGA Issues**

→ **SGA Music Hit Picks**

→ **In-House Campus speakers**

Hosted by SGA President Bobi Lee Messer, with special co-hosts every week!

Call the station request line, (973) 720-3335, to ask questions, get updates on the latest SGA happenings, to speak with guests or request a song.





# PIONEER SPORTS

## Arrigo enters the Exclusive 1000 point club!

By Jason Biziak  
Sports Contributor

A week ago, William Paterson University junior point guard Stephanie Arrigo accomplished a feat that many college basketball players only dream of; she eclipsed the 1,000 point plateau.

"I'm very proud and glad to be playing with her," said sister and teammate Ammee Schubert. Not many people know the real Arrigo.

Schubert describes Arrigo as being "creative and fun to play with. Stephanie was edged on by an opposing team member to shoot a three pointer, the following possession she took the shot and drilled it in the girl's face.

Schubert thinks highly of her younger sister, as do many of Arrigo's teammates.

"Stephanie is a very smart and effective player for us, she can hit big shots and she knows when to pass the ball. She might have a few turnovers in a game but it is not entirely her fault. Most of the times that she passes the ball, someone isn't expecting such a good pass, or they didn't think that Steph say them," stated fellow Pioneer Kathy Sinram. "Stephanie is a great passer, shooter and defender. She takes our team to a

whole new level on the court." Off the court, "she's funny, easy to talk with, and just full of life," said the teams' leading rebounder Wendy

coached by my father," said Arrigo. After playing two seasons under her father, Stephanie went on to continue her career at the

years. Bright eyed Arrigo said, "I liked the coach as well as the campus," referring to Head Coach Erin Shaughnessy and the WPU cam-

connected to the game of basketball in a different capacity. All coach a twelve-year-olds' team back home during the summer, stated Arrigo. Also coaching in the league are her father and sister, although they never have to head to head, because each coaches at different age levels.

As for the relationship with her family, Arrigo's says her family is really close. "My family plays a pretty big role in my life. My parents at least twice a week, they come to every game, and I play with my sister, we do many things together."

Arrigo enjoys the freedom of living at school. She said, "It's nice to live away from home, but only live an hour away so I can see my family whenever I want. I can go home on the weekends, but usually don't," said Arrigo.

As for Arrigo's future, a criminal justice major with a minor in what I want to do in the future, I might want to coach or get into some aspect of the criminal justice field," said Arrigo.

Whatever she plans to do, Arrigo has one more year to help her teams quest for a NCAA National Champion and to add more points to her spectacular career.

pus. Her choice was imminent. An integral part of the team, Arrigo has high expectations this year. "We have the NCAA's coming up, and I expect our team to go pretty far," said an optimistic Arrigo. Away from school, Arrigo is



photo by Sylvana Meneses/The Beacon

Stephanie Arrigo tries to stifle the opposition in a recent game against Montclair State University. Arrigo joined the Pioneer 1000 point club in only her junior year at William Paterson University.

Kane. Arrigo's skills and achievements can be attributed to the fact that she has been affiliated with the game of basketball for quite some time. "I've been playing basketball since the seventh grade. I first started playing for a summer league team

high school level. "I played for Hunterdon Central High School in Flemington, NJ," explained Arrigo.

Four years passed and it was time for Arrigo to choose the college that she was going to showcase her skills at for the next four

## Pioneers trip over Rowan again

Ira P. Thor  
Sports Contributor

WAYNE, NJ----- Different season--different building--same result. For the third time in the last three seasons, Rowan was simply too much for William Paterson to handle, as the Profs blew the Pioneers out of their own building Friday evening, 74-46, to capture the Women's New Jersey Athletic Conference Championship. For Rowan, it was their third NJAC conference crown in a row, and fifth of the last seven years, as seniors Jenn Denby and Takiyah Bowen slapped the dynasty label on their stellar four year careers.

Rowan wasted no time letting the packed Rec Center know they meant business, opening the game with a 7-0 run. The Lady Profs, 24-2 (16-2 NJAC), who also bombed the College of New Jersey Wednesday 60-34 to earn a shot at a three-peat, would never look back.

Kathy Sinram, the 5-5 senior guard and co-captain of the lady Pioneers, would BANGO a three-pointer five minutes into the game to cut the Rowan lead to a 14-9, five point advantage. That's as close as it would get for top-seeded William Paterson.

For Sinram and the Pioneers, the first half would be plagued with

both poor shooting (31 percent, 9 of 29 FG), and the Rowan star-combo of Jenn Denby (5-5 senior guard- Millville, NJ) and Takiyah Bowen (5-11 senior forward- Newfield, NJ). Denby would hit 6 of 8 from the field for 12 points, and add 8 first half boards, as the Profs went to the intermission with a comfortable 32-22 lead. Bowen tallied 10 points and 6 rebounds during the first 20 minutes of the championship.

For the Pioneers, who came into the title game 12 and 0 at home, their road to the finals was courtesy of a 21 point, 75-54 blasting of the fourth seeded Montclair State University Redhawks. In both 1996 and 1997, the Pioneers captured NJAC semifinal victories just to take the two-hour drive to Glassboro to have their throats slit by the Profs. Not only was a conference title on the line this go-around, so was the #1 seed in the NCAA pairings set to be announced Sunday evening.

Despite the home court advantage, and despite the Pioneers having previously defeated Rowan at the Rec Center on January 21 by 11 points, 68-57, the Pioneers continued to be wooped by treacherous shooting in the second half.

Sinram would drill another three in the opening moments to cut the Prof lead to seven. Sinram would

score 10 on the day, but only 3 of 14 from the field, including just 2 of 7 from long range. That was as close as it would ever get, as the Jenn Denby show continued in the 2nd half.

Denby hit two more field goals to expand the lead to 37-25. The Profs began to pull away after a 14-0 run. After two free throws by Dana Feltz cut the Rowan lead to 46-27, Denby sank another shot and Rowan possessed a 21 point advantage, with 15 minutes remaining.

Denby finished the title game with 25 points, including 11-18 from the floor, and 14 rebounds. Going into the NCAA tournament, Denby has 1708 points, 24 shy of becoming the all-time leading scorer in Rowan women's hoops (a distinction held by Tammy Steele, who recorded 1,732 points from 1982-86).

The Pioneers, (23-3, 17-1), shot a pitiful 16.1 percent in the second session, held in check by a stingy Rowan defensive game plan. For the game, William Paterson shot 23.3 percent-just 14 of 60 from the field. Rowan, conversely, shot 45 percent for the game (27 of 60). Rowan would lead by as many as 30, before the buzzer sounded to give Rowan a 74-46, 28 point win.

Bowen completed the final with 10 points and 10 rebounds. She continued Pioneer Women page 13

## Pioneer men stumble

Ira P. Thor  
Sports Contributor

EWING, NJ-----What was originally deemed a rebuilding year for men's hoops at William Paterson following the graduation of four starters and seven seniors came to a close Thursday evening with an 87-69 loss to the College of New Jersey in the semifinals of the New Jersey Athletic Conference tournament.

The Pioneers attempted to duplicate what they achieved in 1997, when they were also the fourth seed and shocked #1 Rowan 63-61 in two overtimes in Glassboro during the NJAC semifinals. But the Lions were just too strong offensively, shooting 68.9 percent in the 2nd half (22-32 FG) and 57 percent for the game to end the Pioneers season in front of 1,270 spectators in Ewing.

The College of New Jersey will play host to Rowan in Saturday's championship, after the Profs upended Jersey City State.

The College of New Jersey (21-4) took a six point, 34-28 lead to the locker room. But a huge 2nd half of shooting helped propel them into the conference finale. For the game, TCNJ sank 36 of 63 shots, including 8 of 17 from the land of AT&T. Six Lions would

score at least nine points.

Bill Burr banged in 20 on 13 shooting, while David Ferguson added 18, thanks to a solid 7 of 9 from the field. Todd Hartman compiled 12, as did Jamie Allen, who scored all his points from beyond the arch (4-7). Joe Amuri hit for 10 points, point guard Sean Covington chipped in 9.

Senior guard Arik Cotten (3-10, Morristown), paced the Pioneers (15-11) with 17, including 7 of 13 and 3 of 7 from 3-point land, and dished out six assists. David Coleman (6-6 Junior forward- Irvington), added 13, while Kevin Fleming (Freshman guard, East Camden), continued to shine, chipping in 10.

Senior forward Justin Frederick (6-4, Jersey City), scored 10 points, on 4 of 13 shooting, to finish his fabulous three-year Pioneer career with 987 career points. A shy of becoming just the 2nd Pioneer to reach 1,000 career points.

It is unlikely that William Paterson will receive an NCAA bid. Head coach Jose Rehimba expected to decline an NCAA postseason invitation (similar to NIT in Division I) once the selections are announced.

## Pioneer softball looking to soar

By Keith Platt  
Sports Contributor

With the onset of spring, the thought of bats, gloves, and ballgames come into mind. The William Paterson University Lady Pioneer Softball team will begin play with thoughts of New Jersey Athletic Conference Championships dancing in their heads.

Coming off of a disappointing 12-17 season which saw them bounced from the NJAC tournament by Rowan in the semi-final round, the Lady Pioneers will bring a more mature and disciplined team to the field.

WPU returns All-NJAC catcher Becky Perkins (who led the Lady Pioneers in batting with a .356 average), senior shortstop Jen Grasso and pitcher Gina Selvaggio to the team. With the addition of freshman pitcher/outfielder Diane Naugle and a group of young outfielders, the Lady Pioneers will take on the likes of The College of New Jersey, Rowan and soon-to-be Division I Montclair as part of one of the toughest

schedules in NCAA Division III Softball. In addition to playing in the always brutal NJAC, the Lady Pioneers will soon depart for Florida, where they will take on the nation's best Division III softball teams.

"Florida will help us put our own talent level into perspective," said Hallie Cohen, head Softball Coach. "Down there, we'll see a lot more teams and the competition will be really tough," added Perkins.

The Lady Pioneers are looking to take a giant leap forward this season:

"We're looking to get further than we did last year, to qualify for the NCAA tournament, and to at least get to the conference finals, if not win the whole thing and get an automatic bid to the tournament," Cohen added.

To achieve these lofty goals, the Lady Pioneers will have to do so on technical performance and heart. "Succeeding is a matter of execution," Cohen said.

Another key to achieving a championship level is a good attitude, which the team clearly

has. "We have a tremendous attitude this year, we have people who want to be here and want to win, which makes it easier," said Perkins.

The Lady Pioneers will go into this season with increased confidence as well. "We'll be one of the top teams in our conference," said Grasso, a solid defensive shortstop who batted .267 last year.

Added Perkins, "We're much more confident heading into this year, we should do a lot better this year."

Relying on a solid group of veteran infielders, young outfielders and a solid 3-person pitching rotation, the Lady Pioneer softball team will use solid defense, aggressive baserunning and good team speed (ala the St. Louis Cardinals of the early-mid 1980's) to be a vastly improved team this year and will be very competitive both within the NJAC and within the NCAA as a whole.

Look for WPU to qualify for the NCAA tournament and reach the conference title game. The Lady Pioneers hope the season won't stop there.

## Pioneer Faces

Indoor Track  
Rohan Jackson

On Sunday  
February 15,  
Rohan Jackson

placed second in a photo finish 55 meter dash in the New Jersey Athletic Conference Indoor Track Championship at Lehigh University in Bethlehem, Pennsylvania. Rohan ran the 55 meters in 6.53 seconds. The 6.53 qualified Jackson for the Division III Indoor Track National Championship held at Brandeis University in Waltham, Massachusetts in March. Rohan, of Irvington formerly ran for Clifford Scott High School.

Women's  
Basketball  
Kathy Sinram

Kathy Sinram,  
5'5" Senior Guard

helped lead the women Pioneer Basketball team to a 75-56 win over Montclair State University in a New Jersey Athletic Conference tournament game Wednesday. Sinram lead the team in scoring with 17 points and contributed 8 rebounds in the win. Sinram added 10 points in the Pioneer's loss to Rowan in the NJAC Championship game. This is different kind of game for Sinram, who is normally a "defensive wizard" for coach Erin Shaughnessy.

## Pioneer Women

continued from page 12  
The Pioneer women's basketball team will begin play on Saturday, March 7, at 7:00 p.m. in the NJAC tournament at Lehigh University in Bethlehem, Pennsylvania. The Pioneer women's basketball team will be looking to make a strong statement in the conference tournament. The team is led by senior guard Kathy Sinram, who has been a key player for the Pioneers all season. Sinram has scored 17 points in the Pioneer's win over Montclair State University. The Pioneer women's basketball team will be looking to make a strong statement in the conference tournament. The team is led by senior guard Kathy Sinram, who has been a key player for the Pioneers all season. Sinram has scored 17 points in the Pioneer's win over Montclair State University. The Pioneer women's basketball team will be looking to make a strong statement in the conference tournament. The team is led by senior guard Kathy Sinram, who has been a key player for the Pioneers all season. Sinram has scored 17 points in the Pioneer's win over Montclair State University.

★★★★★  
**JERSEY SPORTS CAFE**  
★★★★★  
125 Park Ave  
East Rutherford, NJ  
Call for Information  
201-933-3308

RESTAURANT ♦ SPORTS BAR ♦ NIGHTCLUB  
JUST RENOVATED!  
≈ NEW STAGE ≈  
≈ NEW BAR ≈  
≈ NEW DANCE FLOOR ≈  
≈ NEW LOOK ≈  
≈ NEW EVERYTHING! ≈  
• NEW ATMOSPHERE • NEW LIGHTING EXPERIENCE  
• NEW SOUND EXPERIENCE

THURSDAY, MARCH 5  
**UUU**  
\$1<sup>00</sup> DOMESTIC MUGS

FRIDAY, MARCH 6  
**Up-All-Nite**  
\$1<sup>00</sup> DOMESTIC MUGS

SATURDAY, MARCH 7  
**Falling Walls**  
\$1<sup>00</sup> DOMESTIC MUGS



# Hey Students...

# WE WANT YOU!



Your SGA is busier than ever bringing about your changes!  
We need your help! VOLUNTEER YOUR TIME AND  
TALENT WHERE IT BENEFITS YOU MOST -  
**YOUR SGA!**

(P.S. It will look great on a resume!)

Are ya interested? Great! Contact:

**Bobi Lee Messer, SGA President (973) 720-2739.**

Or e-mail me at [quetila@frontier.wilpaterson.edu](mailto:quetila@frontier.wilpaterson.edu)

## Beacon Classifieds

OUR RATES	HOW TO PAY	DEADLINES	SEND ADDRESS	ADVERTISING
To run 20 words for one issue is \$6.50. 21-35 words \$7.50. each additional 10 words \$1.00	All classified ads must be paid in advance, unless you have an account with the paper.	Classified ads must be placed by 12:00 p.m. Friday before publication.	The Beacon 400 Pompton Rd. 3rd Fl. Wayne, NJ 07692	Check off money orders or cash for THE BEACON

### Beacon Personals

**3F Rmmate\$ Wanted** to share Haledon Apt. \$300 security \$250 per month (+ utilities.) 4BRms total opens June 1, nonsmokers no parties, clean, responsible, 21yrs And older only, Kitchen, living Rm, 1 Bath. call Nicole 720-1978

**Quality Day Camp** in Morris County has the following summer positions open : Counselors, Swim, Photography, Drama, Music, High Ropes, Sports, Roller Hockey, Maintenance. Please call 973-895-3200 for further information.

**To Kazy:** Awesome piercing! What next?! - A

**To my Little Jen:** I am so happy you chose me as your Big! Make me Proud, I know you can do it! I Love You! - Your Big, Melissa

**To my Little Blanca (AST Associate):** Welcome to my family tree! Keep up the good work! I'm always here for you! Good Luck! Love always your Big Aryn

**Kelly (AST Associate):** Make me proud. I'm always here for you! I know you can do it!! Love your Big, Alicia

**Michele (AST Associate):**

Welcome to the family tree little! Keep up the good work. I love you! Love Your Big, Wulffy

**To the Sisters of Theta Phi Alpha:** Thank you for being there for us, and Mom, thank you for supporting us!

**To Big Vin:** the difference between " " and " " is subtle not unlike the difference between doing nothing and being Max. But the difference could be monstrous. Norm

**To poem reader (her):** do you ever check your e-mail? I wrote you like a week ago and you have not yet responded. the Shining Young Sage

**To Spielberg:** the thing about an authentic movie about lesbian tigers is, that it's never been done. Oh yeah, and will probably die during the sex scenes. But forget about it. 1 of the filmmaker\$

**To Mel B:** if Mr. A, Mr. B, and Miss. C don't show up for class then they're probably in bed. But the interesting part is, in what bed are they. Mr. A

**To the girl in the Mob:** One phone call. All it takes is one phone call to get Sigma A ... forget it. Beta Epsilon . . . (you know the rest)

**Amy-** Are you still alive? Let me know when your

break is, ANNIE has begun! - Pam

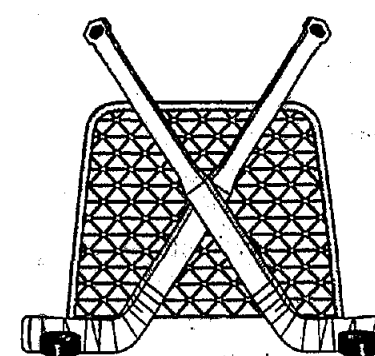
**To all at White Hall-** Party in Room 203 Thursday night! Plenty of beverages will be served - Brandon

**To all my writers-** enjoy the Spring Break and be ready to work when we get back! Thanks- Pam

**Check out Spanky's** webpage at <http://home.earthlink.net/~gmeneses>. Great photos!

**Namron** - no coffee over spring break? awww-alemap  
**RUSHBEACONRUSHBEACONRUSHBEACONRUSHBEACON**

## FLOOR HOCKEY



ENTRIES DUE BY

**MARCH 6TH**

\$30 team fee

CAPT'S MTG:

TH. 3/19 12:30

## LET'S PLAY BALL!



MEN'S

SOFTBALL

ENTRIES DUE:

**MARCH 6TH**

\$30. entry fee

### Operations Assistant

Immediate Job

Opportunities Available

Monday Through

Saturday Shifts

Flexible Hours

Make Your Own

Schedule

Earn While You Learn

Apply In Person:

IPC

1 Madison Street

Building F

East Rutherford

Think you're pregnant?  
Partner pressuring you?  
Let's talk it over...  
we can help.

Our free & confidential  
services include:

- Pregnancy Testing
- Counseling
- Post-Abortion Support



(973) 538-0967  
24-hour Hotline

Morristown • Wayne  
Jersey City

**FREE ROOM and BOARD,**  
**PLUS \$75 a WEEK**  
We have a great situation  
for a great person!



We're looking for the perfect someone to help us out with childcare. We live approximately 3 miles from William Paterson University in a big, old Victorian house. We have a 5 year-old daughter named Murphy and we need someone to watch her from 7 a.m. to 8 a.m. and then from 2:45 p.m. to 3:30 p.m. The perfect someone must have a car to get her bank and forth from school. In addition, we need childcare one evening during the week. This is a great opportunity for a college student who wants weekends off. We are able to work around your schedule if the fit isn't perfect.

If interested, please call Lynn McVey 973-365-5195 DAYS  
973-304-0344 EVENINGS

### Help Wanted

Looking for Performers  
to do

Costume Characters

- \* Must have own car
- \*\* Must like children
- \* Great Pay
- \* Flexible hours

Call 800-539-8743

Banking

BOE

### PROOF MACHINE OPERATORS

Proof Encoding Dept.

Summit Bank offers attractive salaries, comprehensive benefits, and plenty of room for personal and professional growth. To learn more about these PART TIME opportunities in RIDGEFIELD PARK, and how to apply, please call anytime 7 days/week.

(973) 736-9898  
VOICE BOX #4400

**SUMMIT BANK**  
Member of the Summit Bancorp

"VOICE BOX" is a registered trademark of VOICE BOX SYSTEMS, Inc.

### SONG WRITERS & LYRICISTS WANTED!

"SONG CONNECTION"

The best way to  
your next hit.

1-800-789-SONG  
818-348-0494

### ATTENTION:

**EDUCATION,  
PSYCHOLOGY,  
SOCIOLOGY MAJORS**  
Gain valuable resume  
and field experience  
and make a difference  
in a child's life.

Call for an interview  
for summer positions  
at  
**RAMAPO  
COUNTRY  
DAY CAMP**  
**914-356-6440**  
Counselor/Specialty  
summer positions

ONLY AREA APPEARANCE!

**MARCH 25**  
**7:30 PM**

**WILLIAM PATERSON UNIVERSITY**

**REC CENTER**

**WAYNE • NJ**

TIX AT THE REC CENTER BOX OFFICE, THRU ALL TICKET OUTLETS &  
CHARGE-BY-PHONE (201) 507-8900 • (609) 520-8383. EVENT DATE & TIME SUBJECT TO CHANGE.

**PRODUCED BY METROPOLITAN ENTERTAINMENT GROUP**  
AN OGDEN ENTERTAINMENT COMPANY VISIT US AT [WWW.CONCERTHOTLINE.COM](http://WWW.CONCERTHOTLINE.COM)



# Multicultural Awareness Week

## February 27 - March 6, 1998

### UNlty in dIVERSITY

Monday, March 2, 1998

#### "WHY I BECAME A WOMEN'S RIGHTS MAN"

Fred Morsell portraying the abolitionist "Frederick Douglass"

7:00 p.m., Student Center Ballroom

Reception will follow.

Sponsored by the Sociology Club, Phosphorus & The Women's Center

A Bridge Event for Multicultural Awareness Week & Women's History Month

Tuesday, March 3, 1998

#### "LEARNING FROM OUR SHARED HISTORIES"

Conversations with Frederick Douglass, Elizabeth Cady Stanton & Sojourner Truth

Performance and Panel Discussion

11:00 a.m. - 3:00 p.m., Student Center Ballroom

Reception included

Sponsored by the Pioneer Players, Phosphorus, Women's Center & SAPB

#### "A CULTURAL X-CHANGE"

Gambia, West Africa Students & Faculty Visit WPUNJ

5:00 p.m., Student Center Ballroom

Dance Performance, Film & Reception

Sponsored by the Communications Dept. & the Black Student Association

Wednesday, March 4, 1998

#### ASPECTS OF NATIVE AMERICAN LIFE

Teepee Display & Lecture

Artifacts and Authentic Food

Student Center Lawn & Ballroom

Sponsored by the Anthropology Club

#### "A NIGHT IN INDIA"

Dance Performances & Authentic Food

Lecture given by Dr. Kirit S. Parikh

Senior Economic Advisor in the United Nations

Vice Chancellor of the Indira Ghandi Institute

6:00 p.m., Student Center Ballroom

Sponsored by the United Asian American Club

Thursday, March 5, 1998

#### MULTICULTURAL LUNCHEON

11:00 a.m. - 1:00 p.m., Student Center Ballroom

Students \$3.00, Others \$5.00

Sponsored by SCEC

#### MULTICULTURAL AWARENESS WEEK

KEYNOTE SPEAKER: DICK GREGORY

Comedian, Author, Nutritionist, Activist & Actor

1:00 p.m., Student Center Ballroom

Reception to follow in SC Art Gallery

Sponsored by SABLE, BFA & SAPB

Friday, March 6, 1998

#### "BREAD, BREAD, BREAD" OPEN HOUSE

Featuring breads from around the world.

Hunziker Wing 35

Sponsored by SEEC & WPUNJ Child Care Center

#### BUS TRIP TO THE BROADWAY PLAY "CATS"

Sponsored by the Office of International Students

*All activities are sponsored by the Student Government Association, Spanish Club, Sociology Club, Pioneer Players, Anthropology Club, United Asian Americans, SAPB, SCEC, SEEC, SABLE, BFA, Phosphorus, The Women's Center, Communications Department, Black Students Association & The Office of International Students.*

*For additional information, contact  
the Office of Campus Activities, Assistant Director, Ms. Dorian Douglas,  
Chairperson of the Multicultural Awareness Week Committee, at (973) 720-2518.*



# The Beacon

COPYRIGHT 1998 VOL. 62 NO. 24

FREE  
25¢ outside of Passaic County

MARCH 2, 1998

## Campus Police in search of suspects for car vandalism

By Pamela Langan  
News Editor

Approximately 15 cars were damaged during the early hours of the morning of Monday, February 23 in parking lot 5 of William Paterson University.

According to Campus Police Sergeant Russ Stengel, Sergeant John Casaleggio and Patrolman Al Clark were on routine patrol at approximately 4:50 a.m. in row D of lot 5 when they noticed broken car mirrors were lying next to several cars. Upon investigation, they found three damaged cars in row D, three damaged cars in row C, and seven damaged cars in row E.

Casaleggio and Clark notified other patrolmen and advised them to investigate other parking lots. Four cars were found damaged in lot 2, which makes the total number of damaged cars 15.

Campus Police notified the owners of the cars and had them give statements of new damage,

considering the fact that some of the damage on the cars could have been previously done.

"There were predominantly broken mirrors," said Stengel.

He added that some of the mirrors were just broken and hanging off of the cars, and some were lying on the ground. While some of the students also suggest that their cars had been "keyed", meaning scratched with a key, Stengel commented that the scratches on the car could have been damage from removing the mirrors.

"We don't have any suspect for the incident," said Stengel. "No one has a reason or any idea why it occurred to their vehicle," he added.

If someone is found responsible for this act of vandalism, the penalty is dependent upon the amount of money estimated from the damage. Although 15 cars were damaged, the incident is counted as one case.

According to Stengel, if the total

damage is reported under \$500, it is considered a disorderly persons offense and the person is charged with criminal mischief.

If the damage totals over \$500, it is considered an indictable crime, and the person will have to go to the county grand jury.

If a total of \$2000 or over is found, it is considered a third degree crime and the punishment is more severe, according to Stengel.

Campus Police confiscated some of the mirrors that were on the ground, and are currently planning to check them for fingerprints with their own identification specialist. If needed, they will also send the mirrors to the County Bureau of Identification to check, considering that most of the fingerprints could be those of the owners.

Unfortunately, the victims of this crime are not going to be reimbursed for the damage to their cars. However, Stengel noted they



photo by Sylvana Meneses/ The Beacon

**Cars parked in different rows of Lot 5 were damaged early Monday morning, with broken mirrors and scratches on the cars. Campus Police are currently looking for a suspect.**

have been referred to the WPU Risk Management Department.

Campus Police is currently searching for those responsible for this crime.

They encourages anyone who saw suspicious characters in the parking lot between the hours of

approximately 1:30 a.m. and 5 a.m. on Sunday morning, or has any other useful information about the crime, to contact the Detective Bureau at 720-2300. According to Stengel, all information will be kept confidential.

## Candy shop in Student Center pleases many



photo by Carolyn Fuge/ The Beacon

**Pictured above is the "Sweet City Express" counter which stands behind the Information Desk in the Student Center.**

By Rebecca Green  
News Contributor

Recently the information desk at the student center has introduced a new feature. A variety of candy is now sold at the desk.

Tony Cavotto, Director of Hospitality Services first saw candy being sold at a student center at a Long Island college.

Then at a trade show he saw the set up and was asked to try it for William Paterson University. There was no charge for the set up and the equipment when the candy was bought.

The school paid for the cost of purchasing the candy, and the

sweet shop is considered an extension of the vending operation. The profits made from it go to the Student Center.

In the past there was a sweet shop on campus from 1970-1990. According to Cavotto, it did well at the Student Center during the time. Taco Bell was then opened in place of the sweet shop. The new candy counter, "is a smaller version and more manageable than in the past," said Cavotto. The sweet shop helps to increase the interaction at the information desk, and people will see the information available to them.

"The two operations in one location help each other," said

Cavotto. "I invite the students to come and check it out."

Although the student workers have now been given a new responsibility in addition to their original job, the employees have responded well to this new job.

"I have not heard anything negative. I can't imagine them being upset about it. Candy is a fun thing," said Cavotto.

The reaction to the candy counter from the student employees has been positive. Jennifer Bird, sophomore info desk worker said "It's been good. A lot of people have been using it. It's a good idea."

This new responsibility has also been a job improvement for some. "It makes the time go by faster. It gives me something to do," said Amanda Amerman, a freshman student employee.

Another student worker, freshman Joannie Nunez said "It's kept us busy. One person can't work by themselves."

"At first I thought this was a rotten idea. I thought it would clutter the info desk area and cause confusion among the workers. However, this has not been the case," said Michael Wnoroski, junior Student Director.

"The workers have handled it well and the students seem to really enjoy it," added Wnoroski.

"I think it's a nice way to make money for the school. If you're really hungry, it's the only thing open everyone can afford," said student Junique McRae.

## WPU groups ready to celebrate Women's History Month in style

By Robyn J. Caputo  
News Contributor

To celebrate March as Women's History Month, the campus of William Paterson University will be hosting many different events. This year's theme is "Conversations Across Centuries," which will commemorate the many achievements of women in all areas of life.

The kick off of events starts with the bridge between African Heritage Month into Women's History Month with Multicultural Awareness Week. From February 27 through March 6, one can enjoy a cultural variety from "Learning from our Shared Histories," conversations with historic legends, to a dance performance done by Gambia, a group of West African students and faculty.

This year marks the 150th anniversary of the first Women's Rights Convention held in Seneca Falls, New York in 1848. WPU has had a Women's Studies program since 1973, however this is the first year the program has been made into a full department where students can now get a degree in the area.

Dr. Meryle Mahrer Kaplan, the

coordinator of the WPU Women's Center, is excited about this year's events. Kaplan has been involved in women's studies for over 30 years. She helped to start the Women's Studies program at Ramapo College. She has a doctorate in the Psychology of Women, and has had the experience of growing up during the women's movement.

Kaplan has been with WPU for the past five years and feels that the most significant thing about this month's celebration is the "joining together to recognize women's concerns."

The month's events have been in the planning for a long time. Open meetings have been held since November where all were welcome to share their input and ideas. The individual groups financed their sponsored events and arranged any necessities. Then the master schedule was set up by the Women's Center.

This month's activities and campus wide events involve such groups as the Feminist Collective, SABLE, the Student Government Association, the Women's Studies Department, the Office of Minority Education, the Student

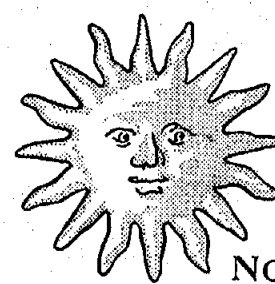
see WOMEN'S page 11



# THE HEAT ZONE TANNING SALON

"20 Minute Vacations Available Daily"

## ALL NEW HOT LAMPS

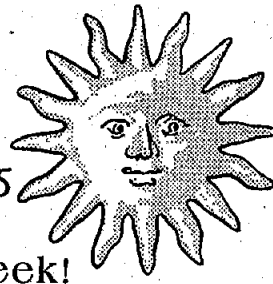


Prices:

One session \$6

Six sessions \$25

Two week unlimited \$35



Now Open 7 Days a Week!  
Open until 10 p.m.!

1 Month  
Unlimited  
for only  
**\$50**

with coupon •  
Cannot be combined with any other  
offer • Exp. 4/1/98

**NEXT WEEK:  
SPRING BREAK**

10  
Sessions  
for only  
**\$40**

with coupon •  
Cannot be combined with any other  
offer • Exp. 4/1/98

ONLY 3 Min. From Campus across from Wayne Hills Mall  
**87 BERDAN AVENUE, WAYNE**  
**973-305-6700**

## Campus Calendar

Monday, March 2, 1998

Career Development Center - Resume Writing. Morrison Hall Room 146. 5 to 6:30 pm. Call ext. 2281, 2282, 2440 for info.

Tuesday, March 3, 1998

Women's Center - Women's Discussion Group. Meets every Tuesday @ 3:30pm to 4:30 pm. Women's Center: SG 214. Contact Meryle Kaplan @ 2946.

Career Development Center - Resume Writing. Morrison Hall Room 146. 12:30 to 2pm. Call Ext. 2281, 2282, 2440 for info.

Pagan Students Association - Portals: A guided meditation through the imagination of your mind! All Welcome. 3:30 pm to 5:30pm. White Hall Lounge. Contact Adrienne @ 973-575-6849.

Career Development Center - Planning for Graduate School. Morrison Hall Room 146, 3:30 to 4:30pm. Call ext. 2281, 2282, 2440 for info.

Wednesday, March 4, 1998

Career Development Center - Interview Techniques. Morrison Hall Room 146, 4:30 to 6pm. Call ext. 2281, 2282, 2440 for info.

Thursday, March 5, 1998

Pagan Students Association - Clan Avalon Handfasting. Film presentation of a Wiccan Wedding between four people. Discussion will follow. 12:30 to 2:00pm, Library Film Auditorium. Contact Adrienne @ 973-575-6849.

Career Development Center - Interview Techniques. Morrison Hall Room 146. 12:30 to 2pm. Contact ext. 2281, 2282, 2440 for info.

## the Beacon

A NEWSPAPER THAT'S CLEARLY FOR YOU

Norman C. DeFilippo  
Editor-In-Chief

Pamela Langan  
News Editor

Matthew Halpern  
Business Manager

Ed Erlenmeyer  
Insider Editor

Chris Castillo  
Information Coordinator

Tim Bornemann  
Assistant Insider Editor

Raechel Heffers  
Advertising Representative

Sylvana Meneses  
Photo Editor

Michael S. Fox  
Circulation Director

Michael S. Laclair  
Sports Editor

George Robb  
Academic Adviser

Al Giamarino  
Dave Roe  
Sherri Sage  
Staff Writers

Financial Services  
Provided By  
Charlotte O'Brien  
Barbara Stomber

Carolyn Fuge  
Staff Photographer

The Beacon is published on Monday and serves Haledon, North Haledon, Wayne and the William Paterson University Campus Community. Business/Editorial offices are located on the campus of William Paterson University in the Student Center, Room 310, Wayne, NJ 07470-973-720-2248. The Beacon receives no money from WPU or its student body and therefore relies solely on advertising revenue to operate.

## Alumni Association seeks volunteers to work at annual Phonathon

By Alexandra Donovski  
News Contributor

*From the 1997-1998 Phonathon, grants totaling \$34,000 were awarded to departments and committees all over campus, and over \$92,000 was awarded to approximately 100 students in the form of scholarships.*

The William Paterson University Alumni Association is holding their annual Phonathon from February 27 to March 26. The Alumni Association is looking for student volunteers to help raise money by calling the WPU Alumni and asking for donations to help fund future student scholarships and grants.

The association is having a special student volunteer week from March 8 to March 12, and they are asking student groups such as fraternities, sororities, teams, clubs,

and individuals, to contribute a few hours of their time to phoning the alumni and soliciting donations.

At the end of the Phonathon, the association will award two cash prizes to the groups and to the individuals who raise the most money and find new donors.

The prizes awarded to the groups will be \$400 and \$200, and for the individuals, it will be \$100 and \$50.

The Alumni Association has existed as a formal organization since the early 1960's, and the Phonathon has been a long-standing tradition at WPU. During the

1997-1998 Phonathon, grants totaling \$34,000 were awarded to departments and committees all over the campus, such as the Child Care Center, University Day Committee, and Catholic Campus Ministry.

Last year, the Alumni Association rewarded approximately 100 students with over \$92,000 in scholarships, and they are asking all recipients of the awards also to come and participate in the Phonathon.

This year, the Alumni Association hopes to reach its goal to raise \$125,000 at the Phonathon, and to raise \$225,000 overall to give back to WPU students, staff and faculty.

The scholarships given by the Alumni Association are academic and activity related.

"There is one for just about every student," said Lysa Martinelli, the director of Alumni

see ALUMNI page 6

## Delta Sigma Theta sorority works hard at WPU with small amount of members

By Matthew Halpern  
Staff Writer

In 1920, the United States Congress adopted the 19th Amendment to the Constitution, stating that "the right of citizens of the United States to vote shall not be denied ... on account of sex." Seven years prior, a group of women joined together to make a different contribution to society.

Delta Sigma Theta Sorority, Inc. began with the vision of 22 predominantly black college educated women, committed to public service. At William Paterson University, the Theta Upsilon chapter of Delta Sigma Theta, chartered in 1971, brings that dedication of public service to the community.

Melba Mullins, president of the Theta Upsilon chapter, is proud of the history of the organization. Sorors, commonly referred to as Deltas, are women who have broken barriers and are involved in all matters of world affairs.

"Deltas are very rich in history," said Mullins. "You will see sorors in all areas of the world -- political, religious, educational and economic development."

Public service is at the core of any Delta Sigma Theta chapter. The national body focuses on a Five-Point Thrust and two commissions:

Educational Development, Economic Development, Physical and Mental Health, Political Awareness and Involvement, International Awareness and Involvement, Arts and Letters Commission, and Social Action Commission. Throughout the year, Deltas at WPU sponsor activities that bring awareness to the community.

As part of their yearly activities, the Theta Upsilon chapter runs events focused on the fostering of an educational environment for children and enlightening people about culture, said Mullins. The Delta Halloween Party, Adopt-a-

School program, Kwanzaa Prep and Homecooking Night are just a sample of what Deltas do every year.

"Deltas are always doing something," Mullins said. "Our primary goal is service, and we are committed to serving the Paterson area, as well as the private community."

Being a Delta does not only give sorors the chance to work with the community, it also allows for personal introspection. Alicia Simmons, treasurer of the Theta Upsilon chapter, recognizes that the skills she uses now will help her with everything she does.

"Being a Delta has helped me a lot to put things in perspective, think things out and always be understanding," Simmons said. "When I feel like I can't get things done, I think about our history and the struggles that we've gone through to get things done."

According to Simmons, being a Delta is not just about membership. Interested women are those who demonstrate leadership qualities and make an effort to support the events of organizations.

The Theta Upsilon chapter, currently made of three women, has a wealth of leadership, despite its small numbers. Mullins is the current Student Government Association vice president, Simmons is a Club Representative to the SGA Legislature, and the third member, Jasmine Lopez, is a past treasurer for the SGA.

The quality of a Delta is the ability to work hard and balance many endeavors, said Mullins. But with this hard work, there is no desire to flaunt their work. Their hard work and dedication set these women apart from the rest, she added.

"Everyone does not possess qualities for public service and to serve the community," said Mullins. "A Delta woman is someone you should be able to recognize because of their service."

**Editor's Note:** The above article concerning Delta Sigma Theta is the first article of a three-part series associated with this sorority and Women's History Month. Be sure to read the March 23 and March 30 articles to keep track.

## 'Couch potatoes' raise money



photo by Sylvana Meneses/The Beacon

Members of the Phi Kappa Tau fraternity of William Paterson University recently held a 24 hour fundraiser for the Children's Heart Association. Many of the members could be seen outside the Student Center from Wednesday night until Thursday night watching videos and listening to music to keep busy and warm while battling the cold. With a set-up of couches, chairs, blankets, and an entertainment station with a television and video game set, they showed dedication over 24 hours to raise money for their cause by requesting donations.

## Pagan film series continues on Thursday

The Pagan Students Association (PSA) will present "The Handfasting of Clan Avalon," as the second in its series of Thursday film programs in the Library Film Auditorium on March 5 from 12:30 to 2 p.m. The video features a handfasting (wedding ceremony) conducted in October 1996 at the annual Council of Magical Arts Samhain Festival in Texas. Actual Wiccan ritual is included, written by four partners in the marital unit, and the High Priest explains the various customs and symbols used during the celebration.

An unusual element of this ceremony is that it features the vows of four people uniting in a panfidelitous union, or group marriage. "Most Wiccans and Neopagans practice the same monogamous relationships as the rest of the society," PSA President Adrienne Roy Tollin explains, "but some believe in and practice various forms of polygamous relationships, including polygamy (more than one love), panfidelity (meaning 'faithful to all') -- a committed loving relationship between more than two partners, and multi-adult expanded families."

"Should government agencies prohibit forms of loving and sharing that do not coincide with certain popular beliefs and ethics? Should loving relationships between consenting adults be under legislative

restrictions in a supposedly 'free' society? Those are some of the topics that may be discussed after the handfasting video is shown," said Tollin. "Whether one is interested in Wiccan rituals or in the issues concerning alternative families, lifestyles and lovestyles, 'The Handfasting of Clan Avalon' is certain to provoke thought and discussion," said Tollin.

The PSA is extending an open invitation to all students and faculty in the William Paterson University community, and especially to members of the Sociology and Anthropology departments.

PSA's regular meetings are held every Tuesday between 11 a.m. and 2 p.m. in room 206 of the Ben Shaun building. The club also hosts guided meditation sessions from 3:30 to 5:30 p.m. on Tuesdays 10 a.m. to noon on Fridays in the White Hall lounge.

These meditations are designed to take participants on amazing explorations of the inner mind that leave people refreshed and empowered. Participants are asked to arrive on time and it is recommended that comfortable clothing be worn. These meditation sessions are free to all participants and light refreshments will be served.

For further information, email Tollin at PaganEarth@aol.com, or phone (973) 575-6849.

Marketing

## AMBITION, DRIVE & CREATIVITY...

WILL BRING US INTO  
THE 21ST CENTURY

### ACCOUNT REPRESENTATIVES

Use your degree to start you off in an exciting growth oriented marketing position. Assist our Acct Execs in all aspects of maintaining current accounts and developing news accounts. Excellent math, organizational and communication skills required. Join our fast-paced work environment and enjoy tremendous growth opportunities.

Join us at our plush corporate HQ in Mahwah, NJ. We offer a competitive compensation & benefits package. Please forward your resume with cover letter to:

Recruiting Manager/ACC  
**DIALAMERICA  
MARKETING, INC.**  
960 Macarthur Blvd,  
Mahwah, New Jersey 07495



EOE

Fax (201) 327-7687

**DIALAMERICA  
MARKETING INC.**  
the undisputed leader in the  
telecommunications industry  
has excellent experienced  
and entry level marketing  
career growth opportunities  
for people with ambition,  
drive and creativity.  
Be a part of an innovative  
team that will provide the  
instruction and career  
guidance you need to move  
up the ladder of success.



## Opinions & Review

### The Beacon

#### EDITORIAL BOARD

Pamela Langan • News Editor  
Ed Erlenmeyer • Insider Editor  
Tim Bornemann • Assistant Insider Editor  
Michael S. Laclair • Sports Editor  
Sylvana Meneses • Photo Editor

Norman C. De Filippo  
Editor-in-Chief

### Mailbag

## Gesture can prevent infection

To the Editor:

This is in response to the article written by Amy Elizabeth Briggs, regarding Tuberculosis.

One paragraph reads, "Tuberculosis is an infectious disease that is caused by a bacteria that is spread from person to person by airborne droplets that are either coughed or sneezed up."

The emphasis here is on the fact that people can pass on the infection from coughing or sneezing. While there is an awareness to educate and inform students about the disease, it may also be a very good idea to advise everyone to cover the nose or

mouth when sneezing or coughing. These are very polite and courteous gestures that we all should practice doing.

I have sat in many classes with the students who will yawn, cough or sneeze right in another student's face or within close proximity, without covering the nose or mouth.

If we all were to practice covering the nose or mouth when coughing or sneezing, we may all very well lessen the spread of such infections.

Lorena Wilson-Burke

## The subtleties of language

Whether it is written or oral, human beings' distinct ability to thoroughly communicate ideas, events, and feelings is one of the many important phenomena that set us apart from the animal kingdom. Yet, with all the potential which human beings possess to communicate, miscommunication is still a daily occurrence with immediate and far-reaching consequences.

If one needs to be convinced that miscommunication occurs on a daily basis he need go no further than his good friend. The next time one's good friend and significant other are having an argument ask them both, separately, what happened and you are sure to discover two people with two distinctive, different stories.

So what happened? Is one of them lying; are both of them lying? Possibly but probably not. Are they deliberately telling only part of the truth? Again, possibly but probably not. Most likely, one is merely confronted with two of the many people who do not appreciate the subtleties of language.

However, the consequences of understanding the subtleties of language can be far-reaching. Take the President of the United States, for instance. Mr. Clinton has been accused of a great many things as of late. But one thing which this President will never be

accused of, is not understanding the subtleties of the English language. Is it possible that a politician living in the communication era would not choose his words carefully when defending himself against a serious charge like adultery? Of course not. Then was he being purposefully vague? It seems like the obvious choice.

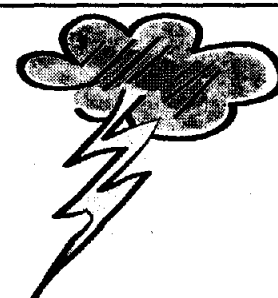
And what about all the incidents of miscommunications indigenous to William Paterson University? The next time you are walking up or down the stairs of the amphitheater, which does not yet seem to be complete, stop and think. "What exactly did administrators mean when they said this blasphemy of concrete and brick was going to be complete by the end of October? Did they mean construction would stop? Well, probably not because construction was not complete until well after the end of the fall semester. Perhaps the job was so difficult it had to be abandoned." Maybe that was not a case of miscommunication. Who knows?

But, are many people purposefully using language to their advantage in a deviant manner, on a daily basis? That is a difficult question to answer. There are many people who are not skilled at using words; but there are many people who are highly skilled at using words. The tricky part is determining who is who.

### LET US KNOW THAT YOU THINK:

What ever you want, go crazy. Write a letter about whatever YOU feel is important.

Letters should be about 150 words long



Letters to the Editor can be e-mailed to beacon1@frontier.wilpaterson.edu, faxed to 973-720-2093, or mailed to The Beacon, SC 310 300 Pompton Road Wayne, NJ 07470 and can be no longer than 150 words, columns or open articles should be no longer than 500 words. Letters must be signed. The editor reserves the right to edit for grammar and length. Manuscripts can not be returned. All submissions become the property of The Beacon.

## A Letter to the Who ... oh the Editor

Echo! Echo ... echo ... Hello! Hello ... hello ... Is anyone out there?

Perhaps we haven't been very clear. This is how it works: If YOU see something happening on campus which YOU feel isn't a good idea, YOU feel can be changed for the better, or YOU feel is simply ridiculous then YOU write a letter to THE EDITOR explaining how YOU feel about the situation. Then THE BEACON publishes that letter.

Come on, YOU can do it. We know YOU can! We hear

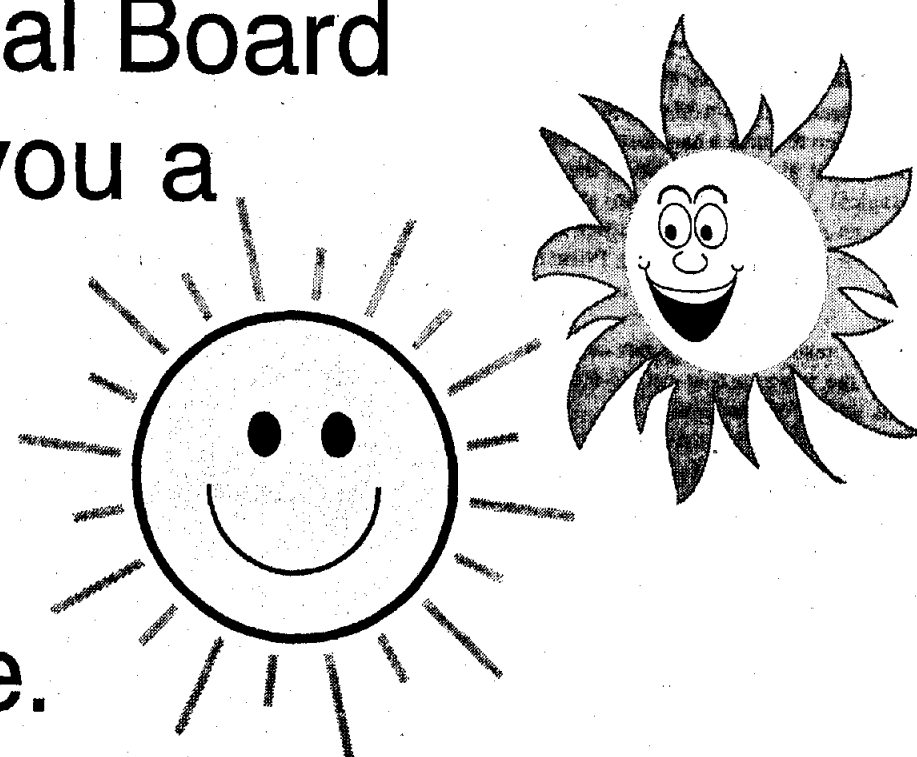
YOU complaining about things all the time.

Don't worry, writing a letter to the editor is more than complaining on paper. By writing a letter to the editor YOU will be reaching administrators. Think of writing a letter to the editor as complaining to the right people.

SO, to paraphrase Grover, from the movie "Kicking and Screaming," if YOU aren't going to do something about what's bothering YOU, don't bother complaining.

## The Beacon Editorial Board

would like to wish you a safe and restful spring break, filled with a tremendous amount of sunshine.



## NEWS FROM THE OFFICE OF INSTITUTIONAL ADVANCEMENT

### Machuga's Dream Provides Scholarships



Machuga Foundation trustees Bruce Waldman, Joseph Makoujy and Albert Dahab (l. to r.) pose with President Arnold Speert (r.) during a campus visit. Not pictured are trustees John Tarrant and Carl Roman.

John Victor Machuga was a thrifty man who had a dream. Growing up in the city of Paterson during the Depression years, his family's struggles during those difficult times dug deep into his memory and charted a life course which many years later would give an important helping hand to three students now enrolled at William Paterson University.

Two years ago the five trustees of the John Victor Machuga Foundation, all life-time friends of Machuga, first got in touch with President Arnold Speert. Their mission was the kind that warms a president's heart.

#### The Machuga Foundation

Machuga's will established a private foundation to support education, the arts, religion, medicine, economics and science.

The trustees, all of whom were close friends of Machuga, told Speert they wanted to fund scholarships at William Paterson. They had gone to see Jeanette Lyde, principal of the Rosa Parks High School of Fine Performing Arts in Paterson,

and she had agreed to help in the selection of scholarship applicants from her school.

Speert passed the good news on to the William Paterson team: Nancy Norville, dean of enrollment management, and Georgia Daniel, assistant dean for scholarships, financial resource planning and community outreach. Working with Lyde and the Machuga Foundation trustees, they selected three Rosa Parks seniors who had applied for the scholarships.

#### Born in Abject Poverty

Who was this man — John Machuga—who lived simply, never married and never spent money on himself? Bruce Waldman, executive director of the Machuga Foundation, who knew him

well, explains, "He was born in poverty in Paterson. He was very frugal; some would call him stingy. But he was my friend so I call him frugal. He invested from the time he was 20 years old. He was an engineer in Paterson for Western Electric, although he didn't have an engineering degree. I think he had an associate of applied science degree from the Newark College of Engineering. Later he got a B.A. and an M.A. in economics from Rutgers/Newark. But he didn't make his money from his jobs; he made it from his investments. He was a genuinely brilliant guy."

#### The Five Trustees

Waldman and Machuga were in business together. In the late '40s and '50s they ran the Atlantic Television Company and International Enterprises, which built houses in Pompton Lakes. Three other trustees, Carl Roman, John Tarrant and Albert Dehab, also were involved in these businesses. Joseph Makoujy, the fifth trustee, was also a friend.

Fast forward through the years to the Pegasus Awards ceremony on June 4, 1997, at Rosa Parks High School. Excitement is high. Lyde is center stage announcing the scholarship winners — the three top applicants: Chanel Porchia, Daren Smith and Kenya Young, all now in the second semester of their freshman year at William Paterson. "I was really surprised and overjoyed," exclaims Smith, a business administration major on the dean's list.

But there's more to come. The three scholarships, originally awarded to cover the fall 1997 semester, have been extended to take care of all expenses for the students for the remainder of their undergraduate studies. And in addition, another full scholarship will be given to an outstanding Rosa Parks student this June. All their thanks belong to John Victor Machuga — the man whose dream made higher education a reality.



## William Paterson University Women's History Month—March 1998 Conversations Across Centuries

*Learning from Our Histories: Conversations with Frederick Douglass, Elizabeth Cady Stanton and Sojourner Truth*

**Monday, March 2, 7:00 PM SC Ballroom**  
Fred Morsell as Frederick Douglass, "Why I Became a Woman's Rights Man," Reception to follow

**Tuesday, March 3, 11:00 AM - 3:30 PM SC Ballroom**  
11:00 AM - Sally Roesch Wagner as Elizabeth Cady Stanton "Why I Organized the First Women's Rights Convention."  
12:30 PM - Kathryn Woods as Sojourner Truth "A Woman Ain't I."  
2:00 PM - A conversation between the three actors and a panel with Professors Danny Meaders, Evelyn Gonzalez and John Jordan. Refreshments will be served.  
Events sponsored by Phosphorus, Women's Center, Sociology Club, Pioneer Players, History Department, SAPB and the Office of Minority Education.

**Tuesday, March 17, 12:30 - 2:00 PM Shea 101**  
Kristin Samuelson, Soprano. "Women Who Composed Music: A Vocal Recital" with Colette Valentine, Pianist. Sponsored by the Women's Studies Department, the Music Department and the Women's Center.

**Tuesday, March 17, 7:00 PM Hunziker Black Box Theatre**  
Miles Below Zero, a play written and directed by Tessa Leigh Derfner and based on the life of Charlotte Perkins Gilman. Sponsored by the English, History, Political Science and Women's Studies Departments and the Women's Center.

**Wednesday, March 18, 4:15 - 6:00 PM Library Auditorium**  
Charlotte Bunch, Founder and Executive Director of the Center for Women's Global Leadership "1998: Human Rights Depend on Women's Rights." A Women's History Month and Political Science Department, Human Rights Lecture Event. Sponsored by COLGAP, Political Science Department and Women Center.

**Thursday, March 19**  
12:30 PM Hunziker Black Box Theatre - "Dedication to Sisterhood" Poetry and theatre performed by Delta Sigma Theta.  
2:00 PM Art Gallery Lounge - Opening of the Juried Women Students' Art Exhibit. Sponsored by Women's Center and Campus Activities.

**Friday, March 20, 10:00 - 1:00 PM, SC Ballroom**  
Women's Studies Day - "Stepping into the Future" with the Rosa Parks Gender Equity Players, Dr. Carole Sheffield, winner of the 1997 Carnegie-Mellon Professor of the Year Award, area high school students, and other members of the WPUJ Woman's Studies faculty. Sponsored by Women's Studies Department.

**Monday, March 23 7:30 PM, Hunziker Theatre**  
"Womyn With Wings", a choreopoem in two acts, Sponsored by HASA and SABLE.

**Tuesday, March 24**  
12:30 PM Library Auditorium - Minnie Bruce Pratt. Sponsored by the Feminist Collective.

4:15 PM SC 203,4,5 - Gish Jen, Chinese American fiction writer and multicultural theorist presents "A Reading and Conversation" Sponsored by Essence and Phosphorus.

**Wednesday March 25, 12:30 - 2:00 PM, Library Auditorium**  
Gilda's Club: "Living with Cancer" a talk given by Randy Hale, Program Manager Sponsored by Lambda Theta Alpha Latin sorority.

**Thursday, March 26, 12:30 - 2:00 PM, Science 200 B**  
United Science Club's Second Annual Women in Science Lecture with Dr. Catherine Forrester of SUNY Stony Brook "Dinosaurs of Madagascar." Organized by the United Science Club.

**Sunday, March 29, 3:00 PM, Shea Center**  
Theatre presentation: Marvin's Room by Scott McPherson, directed by Edward Matthews, presented by WPUJ Performing Arts Resource Unit - Admission fee to performance. Reception to follow. Other performances held 3/26 - 3/31. For tickets and information contact the Shea Center Box Office 973-720-2371.

**Monday, March 30, 7:00 PM SC Ballroom**  
Island Women - An evening celebration including speakers and a dance ensemble. Sponsored by Caribsa and the Women's Center.

**Tuesday, March 31, 12:30 - 2:00 PM, SC Ballroom**  
Fourth Annual Celebration of WPUJ Women, including award to Carole Sheffield, tributes and entertainment. Sponsored by the Women's Center.

Unless otherwise noted, events are free. All events are open to the public. For further information, contact the Women's Center at 973-720-2946.

This program is the result of collaborative planning by the Women's Center, Phosphorus, Campus Activities, History and Women's Studies Departments and many student organizations. Programs are funded by the Student Government Association, Student Activities Planning Board, Women's Center, Phosphorus, various academic departments, Office of Minority Education and various student groups.



# Catholic Campus Ministry plans events for Lent

The Catholic Campus Ministry Club and Center (CCMC) serving William Paterson University, the students' "home away from home," will be sponsoring several events in preparation of the Easter season.

Continually serving the community, the CCMC plans to join with Alpha Phi Omega and Phi Kappa Tau fraternities in serving at Eva's Kitchen in Paterson on the Fridays of Lent.

The main outreach of the CCMC is the campus wide "Shelter the Homeless" Collection which began on Ash Wednesday, on behalf of agencies that serve the homeless: Eva's Shelter, and Youth Haven, both located in Paterson, and Covenant House of

NJ, located in Newark.

Lent a forty day period of fasting, service to the poor and repentance, began on Ash Wednesday, February 28. "Shelter the Homeless" Collection cans will be distributed at all masses to those who wish to collect during Lent.

All donations collected will be counted and given to representatives of the agencies at the "Appreciation Night Mass" on Sunday, May 3 at 7:30 p.m. at the CCMC.

Besides concentrating on outreach to the community, the CCMC strives for greater self-awareness among the students. A Lent Retreat will be held on Saturday and Sunday, March 28 and 29 at the CCMC. The retreat

## Alumni Phonathon needs volunteers

from ALUMNI page 1

Relations. Anyone can apply for scholarships, and the applications will be available at Alumni Office in March, for the coming year, and are open to all current freshmen, sophomores, and juniors.

Some scholarships that Martinelli would like to highlight, are full tuition scholarship for family of Alumni, two scholarship,

for Education majors with high academic standing, undergraduate fellowship that give full tuition, for a junior or senior, willing to work in the Alumni Office, and one graduate student-scholarship specifically for a Communications Disorder majors.

If anyone feels like donating their time to help the Alumni Association, call the Alumni Office at 720-2175, and talk to Martinelli or Connie Alexis-

Laona, the assistant director of the Annual Fund. They have a pre-written script, and let you know who it is you are speaking to.

"The focus of the Alumni Association is to give back to the students," said Alexis-Laona. The Phonathon is good "because the Alumni want to give back to the school they love" said Alexis-Laona.

Laona, the assistant director of the Annual Fund. They have a pre-written script, and let you know who it is you are speaking to.

Holy Saturday Easter Vigil at 7:30 p.m., all at the CCMC located next to Gate 1 of the university.

Sara Evans, a WPU student and member of the Rite of Christian Initiation of Adults (RCIA) will be baptized into the Catholic Church at the Easter Vigil.

The social aspect of the CCMC continues at the Annual Chapel Fundraising Communion Breakfast, to be held at La Neve's Restaurant, located on Belmont Avenue in Haledon, at 9:30 a.m. This annual event focuses on rais-

ing funds for the construction of a Chapel for the CCMC. The RCIA students will be confirmed at the Communion Breakfast Mass. They are Evans, West Creek; Michael Parent, Lodi; James Haas, West Orange; Vanessa Caro and Anthony Cassisi, Haledon; Elizabeth Peralta, Senaida Peralta, and Alvin Ramos, of Paterson.

The public is invited to all events. For information call (973) 595-6184.

Holy Saturday Easter Vigil at 7:30 p.m., all at the CCMC located next to Gate 1 of the university.

Sara Evans, a WPU student and member of the Rite of Christian Initiation of Adults (RCIA) will be baptized into the Catholic Church at the Easter Vigil.

The social aspect of the CCMC continues at the Annual Chapel Fundraising Communion Breakfast, to be held at La Neve's Restaurant, located on Belmont Avenue in Haledon, at 9:30 a.m. This annual event focuses on rais-

**Have a wonderful Spring Break WPU!**

**The Beacon will return on March 23, so be sure to pick one up!**

**From the News Staff**

**GREAT CAREER OPPORTUNITIES!**

**Accountemps**, a division of Robert Half International Inc., the worldwide leader in specialized staffing since 1948, has a reputation for hiring career-driven professionals. We provide an unprecedented training program, lucrative earnings plan including stock options, medical, 401K, plus accelerated management potential.

If you are the type of individual who desires a fast-paced, team environment, positions are available immediately.


Responsibilities include marketing to prospective clients, cultivating and building on existing accounts, screening and placement of candidates, and scheduling and conducting sales and recruiting presentations.

If you are a take-charge individual with an unyielding desire to be the best, we look forward to hearing from you.

Shelley Van Clief, Area Manager  
Phone: (201) 843-3799 • Fax: (201) 843-3977  
www.accountemps.com  
www.rhii.com

**accountemps**  
Specialized Financial Staffing  
©1998 ACCOUNTEMPS, EQE.

**SPEECH-LANGUAGE PATHOLOGY**  
ENHANCING COMMUNICATION INDEPENDENCE



Seton Hall University's School of Graduate Medical Education offers a superior Master of Science Program in Speech-Language Pathology (SLP) that provides you with state-of-the-art academic and clinical training opportunities. Through its affiliation with many prestigious clinical sites, it is one of the most comprehensive SLP programs in the nation.

As a student enrolled in the SLP program, you will train to work with patients of all ages in clinical settings, including hospitals, rehabilitation centers, public and private schools, and many others.

This intensive full-time program teaches you how to provide the most effective diagnostic and treatment procedures to those who exhibit communication disorders, while focusing on the latest developments in SLP as they impact changing healthcare and educational practices.

To learn more, call the School of Graduate Medical Education at (973) 761-7145.

Anticipating first class in Fall of 1998

**SETON HALL**  
UNIVERSITY

ASHA/CAA Candidacy application in process

The Catholic University in New Jersey—Founded in 1856 • 400 South Orange Ave., South Orange, NJ 07079 • http://www.shu.edu

**The Insider**  
Music, Movies, Reviews, Interviews, and much more.

## From Here to the Moon, with Moon Records

By Al Glamorino  
Staff Writer

Located conveniently on East 10th Street in downtown New York is the heart and soul of ska music. With all its recent success, we at **The Beacon** thought we should take a look at just what this is all about.

Moon records has been releasing ska music for over twelve years now. They've become some what of an authority on the matter. Moon has definitely formed a staple in which one can always be assured to find nothing but quality music.

It's all ska music, it's all good, would probably be an accurate description of what it is like in the world of Moon.

Founded way back in the early 80's by lead vocalist/guitarist of the top label band, the Toasters, Robert "Bucket" Hingley has played a big part of what the music has become.

When Bucket arrived here in the U.S from England way back when, he was very surprised at the lack of ska music. He decided to take matters into his own hands and create a label in which he could release the music he loved so dearly. With such a low budget to work with, Hingley needed to find some help who would work for

virtually nothing to build his label into what it has become today.

Steve Shafer, one of those who took the position, is still here to live and tell about it. Shafer is the Promotions director at Moon and has been there from the very beginning. With the help of his wonderful assistant, Patti Rios, Steve has been effectively passing the word around about the label and its music.

Promoting new releases to commercial and college radio as well as various magazines and newspapers is just one part of what Shafer does. As well as working in his department I had a chance to ask Steve a few questions I thought might be worthy, so here it goes.....

**What is Moon all about?**

We're about releasing the best ska music out there from bands that really love ska, for fans who really love ska.

**What bands are you really exited about right now?**

We're actually doing a lot of great things with **Easy Big Fella** as of late, Which is great because they kick ass! We also have two great new bands right now, one is from Los Angeles and is called **Mobtown**, and the other is from San Diego and is called **Skanic**.

**MOON RECORDS**  
**SKA NYC**  
**NEW YORK, U.S.A.**

Great, do you have any comments about labels that have just recently been trying to do what Moon does?

The labels that just started this stuff and are just in it for the money are really just ruining it for everyone else. But there are labels out there who do care about the music. Asian Man, Steady Beat, and Jump Start are some good labels out there.

**Steve, what is the best part of your job?**

The best part of my job was working with you Al.

**Now for what he really said....**

The best part of my job is releas-

ing music for the bands I love.

Thank-you greatly kind gentleman for your time.

Sir Noah Wildman, another long time Moon employee, is in charge of running the Moon storefront just for starters. He also has a big part in the releasing of most of the labels music. Noah has also been the creator of some of Moon's best compilations including the "New York Beat" comps. as well as "Skankaholics Anonymous" among others.

Since Moon has been so successful as of late, they have decided to create a subsidiary label called Ska Satellite.

The purpose of the label is to release music from smaller bands who might not normally get a chance to release an album on a larger label. It gives small bands a chance to get their music out there.

The label also releases music from bands who incorporate ska into other music, such as ska-punk, ska-core, etc. The albums are recorded on a lower budget wherefore they can be sold for a much lower price than normal releases.

The Robustos, Critical Mass, and Highball Holiday are some of the bands who have already released albums on Ska Satellite with much more to come in the future.

The great thing about Moon bands is that they love their music so much that they virtually tour all the time. With so many bands touring for so long it becomes almost impossible for there to be a reason for not going to a Moon show.

Playing all across the country as well as the world there is probably always a ska band playing somewhere near where you are. The label frequently holds showcases in which a group of Moon bands as well as various other ska bands come together for a whole day of great music.

The sight of these showcases are held at the Wetlands located in New York City. They definitely always prove to be worth the trip to get there.

Great shows, great bands, great albums, it seems as if the Moon crew has really got something here. So, if your still unfamiliar with the whole thing you don't even know what your missing.

## What's inside the Insider this week you ask?

• See the wrestling column "In the Ropes" that's got people talking!

Page 9

• Not sure what albums to buy lately? Check out our weekly CD review section "Under the Microscope" for some opinions!

Page 9

**Jersey Seen**

By Ed Ertenmeyer  
Insider Editor

If you or anyone you know has a band that deserves attention, we want to hear from you! The Insider will periodically be running Jersey Seen, a local music column, so drop off any tapes, seven inches or cds along with info about the band at The Beacon office in the student center room 310. Ask for Ed.

Penfold demo tape

This is an extraordinary tape. Penfold play emo style rock with incredible textures and feeling. They cite influences like Quicksand, Texas Is the Reason, and Sunny Day Real Estate. If you are into any of those bands then you will be extremely pleased with Penfold. They have a lot of promise and plan on putting out a 5 song ep in the next few months. To put it bluntly, I love these songs. This tape is in constant rotation in my car. If you like your music played with heart and talent, get in touch with Penfold, you won't be disappointed.

Brian Carley, 103 North Livingston Ave., Haledon, NJ 07030. Penfold223@aol.com

Gate

Gate is a five piece progressive rock band from Pequannock. They have two singers, a male and a female. Their cd, *Simply*, has a total of 11 tracks on it. The main problem I have with this is that the female singer, Brooke Rogers, doesn't do much solo singing. She mainly falls off the songs, she just does back-up. In an era where Paula Cole, Sheryl Crow, and Sheryl Crow have conquered the airwaves, Roger deserves to be put more into the limelight. Aside from that, the rest of the band carries across as gifted. The production is good as well, but they haven't hit the main stage yet.

Gate: PO Box 4231, Pompton Plains, NJ 07644. www.gaterecords.com





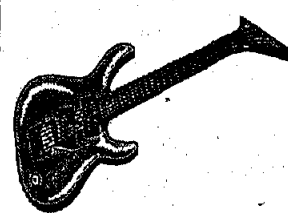
Matthew Marino  
Killed by a drunk driver  
on September 29, 1992  
on Roundtree Lane  
in Melville, New York.



friends don't let friends drive drunk

U.S. Department of Transportation

Ad Council



## BANDS INFO SHEET

Bands must submit a tape either in person, to me, Janice Rainford, or into my mailbox in Don Phelps' office in Campus Activities. The latest that tapes will be accepted in 5:00 p.m. on April 2. Tapes arriving after that time will not be considered for Musicfest. Once the tapes are received, a committee ranks the music on a 1-10 scale, and the four bands with the highest tallies will be the bands performing this year. Musicfest is on Wed., April 22, and the bands selected will play for forty minutes. A prize will be announced once all things for Musicfest are budgeted. It is preferred that bands have a sponsor, whether it be a Greek or a Club on campus, and upon announcement of bands playing, they will have to sign a contract accepting that they will be playing that day. A soundman is provided and members of the selected bands must bring their own instruments. When handing in your tapes, make sure it is re-wound to the song that you would prefer for the committee to hear.

Thank you  
Janice Rainford  
Musicfest Chair  
Instrumentals Not Accepted

# LOOP

SUPERSONIC  
SOUND

Lounge

SUBTERRANEAN  
GROOVES

# ASTRO

LADIES  
FREE  
ADMISSION

50 DRAFTS  
\$2.00 SOL  
\$2.00 JAGR

**EVERY THURSDAY  
FREE LIVE SHOWS  
& \$2.00 IMPORT PINTS**

Thursday, March 5th  
**A.K.P.**

Thursday, March 12th  
**THE SKELS**

Thursday, March 19th  
**RUBBER JOHNNY**  
Check us out on the web  
[www.looplounge.com](http://www.looplounge.com)

**FRIDAYS & SATURDAYS  
FREE ADMISSION  
\$1.00 Bar Drinks & Coors Drafts  
Until Midnight  
D.J.'s Play The Smart Dance Mix  
Open Wed.- Sat. Till 3 AM**

Directions from campus: Rt. 46 East to Rt. 3 East to Passaic Ave. Nutley/Passaic exit, go to right of ramp, go three traffic lights & make a left, (Van Houten Ave.) Go to first traffic light, make a right onto Broadway. Loop is on the right.

373 BROADWAY PASSAIC PARK, NJ 973-365-0807

## In the Ropes

By Tim Bornemann  
Assistant Insider Editor

Well, I went 6-3 with my *Superbrawl* predictions last week. Not bad, but unfortunately the three I were wrong about were the three I most wanted to be right about. It's a crime that Chris Benoit still doesn't have a title.

But on to the next Pay Per View, *Uncensored*. It'll take place on March 15th. I don't know about anyone else, but I liked it better when there were only 2 or three Pay Per Views a year. Not only was it less expensive, but it gave the various federations more time to develop feuds and angles. Three weeks between Pay Per Views is just a little too quick for me, even though *Uncensored* has some promising matches lined up.

Hulk Hogan has moved away from his feud with Sting (for now anyway) and is currently involved in a feud with Randy "Macho Man" Savage. This will culminate in a steel cage match between the two at *Uncensored*. Though

Savage is still technically a member of the nWo, I'm sure he'll be completely removed from this group after the cage match.

Sting will defend his newly won Heavyweight Title against the man who won the World War Three battle royal, Scott Hall. I can't see a title change occurring. WCW has been working this Sting angle for over a year and a half. I just can't see him dropping the belt after only three weeks.

Speaking of these four men, Hogan and Scott Hall will tag team against Sting and Savage on Monday Nitro this week. Look for lots of nWo involvement. This Nitro is taking place in Philadelphia and I'll be attending the event in person. In next week's column I'll be describing the differences between watching Pro Wrestling on TV, and seeing it in person.

Also announced for *Uncensored* is the rematch between the Giant and Kevin Nash. This will be the Giant's first appearance since he was injured in February by a Kevin



Nash Powerbomb. Since this incident, WCW has banned Nash's trademark finishing move. Hopefully WCW will realize that this banning of the Powerbomb is just stupid. This angle is not generating any heat, it's just generating lots of stupidity.

On Thursday Thunder I expect Diamond Dallas Page to lose the U.S. Title to Raven. More than likely it will be due to outside interference. This will set up the Diamond Dallas Page vs. Raven vs. Chris Benoit Three Way Dance that is to take place at *Uncensored*. All three wrestlers will be fighting each other at the same time. Both Raven and Benoit spent some time in ECW so both should be familiar with this type of match. It should be interesting at the very least. Hopefully WCW will finally smarten up and give Benoit a title. We'll just have to wait and see.

## Under the Microscope

Jejune  
Junk

(Big Wheel Recreation)

From the opening moments of "Meteorite" it's clear that Jejune isn't your typical run of the mill band. Their distinctly unique blend of pop, indie rock, and the ever growing emo movement make them stand out in a time of bands that tend to sound the same. With alternating boy/girl vocals courtesy of singer/guitarist Joseph Guevara and singer/bassist Arabella Harrison, Jejune takes the listener on a heartfelt voyage through their debut full length *Junk*.

After releasing two phenomenal split seven inch singles (one with Garden Variety and one with Jimmy Eat World) Jejune steps up to the plate with eight new tracks. Some are loud, like the

Fig Dish

When Shove Goes Back to Push  
(Polydor)

*When Shove Goes Back to Push* is Fig Dish's second long player for Polydor Records. It's a noticeable improvement from their previous effort *That's What Love Songs Often Do*. The album's thirteen tracks have Fig Dish taking on a more aggressive stance with their guitar driven pop songs.

This is a perfect album to listen to while driving on a sunny day or if you're running late for work. *When Shove...* is like a shot of adrenaline that invigorates yet soothes all at once.

The album reaches its peak with the energetic, yet super melodic song "Bend." Electric guitars, acoustic guitars, vocal harmonies and vocal distortion all come together in a sing along rollercoaster of a song. Other highlights include the bittersweet "Wheel Holders" and the fast paced "Sleep Startles." The latter song of the two is very reminiscent of Fig Dish's finest recorded moment "Eyesore."

"Eyesore" was only available on a split seven inch single released many years ago, but "Sleep Startles" recaptures that feeling that got Fig Dish signed to a major label to begin with.

In total, *When Shove Goes Back to Push* is an engaging album from start to finish. It's high as high as their last album, and the lows aren't quite as low. If this is the direction Fig Dish is moving in, keep an eye out for them in the near future (TB).

Screaching Weasel  
Major Label Debut  
(Fantic Button/Loctail)

Screaching Weasel's latest release, a six song EP humorously titled *Major Label Debut*, is a big disappointment. Their trademarks throughout the years have been their musical simplicity, clever lyrics, and all around great sense of humor. None can be found on this album.

First off, Screaching Weasel added an extra guitarist and skilled bass player Mass Giorgini for this album. Ben Weasel comes nowhere near a guitar on this album, which is a shame. Although Ben admits that he doesn't know all the names of the strings on the guitar, his presence at guitar is missed.

Jughead and Zac Damon play rhythm and lead guitar, respectively, and the combination of the two leave the songs on this album sounding a little to slick be Screaching Weasel standards.

The first song on this EP, "The

kevin bacon • matt dillon • neve campbell

They're dying  
to play  
with you.

# wild things



at theatres soon



## Community Mental Health Opportunities

Barnert Hospital, a 256 bed acute care community hospital is pleased to provide the following opportunities in our Access Program. Access is a state-recognized program providing specialized mental health services to deaf individuals and their families. We provide a range of services, including outpatient, partial hospitalization, 24 hour/day, consultation and education, and residential emergency services. Our talented staff have fluency in American Sign Language (ASL), along with fluency in English, social work and rehabilitation. We also proudly employ hearing and hearing impaired personnel.

**Residential Counselor**  
 Diploma required/BA preferred, ability to work evenings/weekends/holidays, and valid NJ driver's license required. Experience with developmentally disabled preferred.

**Mental Health Clinician**  
 Human Services or related field with ASL fluency required. Experience with either mentally ill/deaf/developmentally disabled preferred.

**Sign Language Interpreter**  
 Ministry of Interpreters for the Deaf (RID)/Certified or Div. of Deaf Hard of Hearing in N.J. screened interpreter. HS diploma required/BA preferred and a valid NJ driver's license required. Minimum 3 years interpreting experience preferred. Mental Health interpreting a plus.

**Senior Mental Health Interpreter**  
 MA in Social Work or Counseling required, minimum 3 years experience working with deaf population with mental illness, ASL fluency and a valid NJ driver's license required. Must be available for emergency on-call response.

**Case Manager**  
 MSW/BA with mental health experience, fluent ASL skills and NJ driver's license required. Will handle integrated case management.

and a competitive salary and comprehensive benefits package and an unmatched professional environment. Please mail/fax resume to: Human Resources, Barnert Hospital, 680 Broadway, Mon, NJ 07514. Fax: 973-279-2924. EOE.



[www.ups.com](http://www.ups.com)

Gain a real sense of financial independence working as a permanent part-time Package Handler with UPS. We share our success with our team members by providing:

- Excellent wages
- Weekends Off
- 3-5 hours a day
- Tuition reimbursement for selected shifts
- Medical, dental, vision and prescription coverage

Add that to the experience you'll gain working for a prestigious company, and you've got the perfect job.

To find out about current opportunities at a UPS Facility near you please contact your Career Placement Office or call our toll-free number. EOE M/F



United Parcel Service

You handle this package.

...And we'll handle this one.

### AVAILABLE SHIFTS:

**PRE-LOAD SHIFT**  
 Begins at 4:00am

**\*DAY SHIFT**  
 Begins at 10:00am

**TWILIGHT SHIFT**  
 Begins at 5:00pm

**\*MIDNIGHT SHIFT**  
 Begins at 11:00pm

**1-888-WORK-UPS**

\* These shifts not available at all facilities.

## Emergency phones working



photo by Sylvana Meneses/ The Beacon

The long-awaited Blue Light emergency phone system has finally been installed and the many phones are working just fine.

Located on various parts of campus, the blue light on the top makes it possible for Campus Police to locate which phone a person is calling from, due to the fact that it blinks when activate.

In addition, the lights on each phone can be seen at a distance from each other.

This phone pictured to the left stands behind the Student Center on the walkway to the Science Building.

Bob Lee Messer, Student Government Association president, is thrilled to finally see the phones installed and working properly.

## Women's History Month full of events for WPU community to celebrate

from WOMEN'S page 1

Activities Programming Board, the United Science Club, the History Department, Essence, COLGAP, Caribsa, Delta Sigma Theta, Lambda Theta Alpha, Pioneer Players, and many others.

Most of the events were arranged by the individual groups which gave the schedule much diversity. The first of these events will be conversations with Frederick Douglass, Elizabeth Cady Stanton, and Sojourner Truth.

Actors will be dressing the part of these historical figures and using their actual words and opinions to speak about the women's movements. Afterwards there will be a panel discussion between the three actors and a group of professors.

Another event scheduled is an art exhibit with the work of female students titled, "Dedication to Sisterhood." It will be a showcase of poetry, lectures, plays, and theatre sponsored by the Delta Sigma Theta sorority.

Kaplan added, "I feel really excited. We are looking forward to sharing these events with the

entire campus."

At the end of the month, the activities will come to an end with the "Fourth Annual Celebration of William Paterson University Women." This event is a celebration of the community where all are welcome to perform a song, recite poetry, or just to speak about various topics.

Members of the audience will also have the opportunity to write tributes to individual idols, such as their own mothers or historic women. These written tributes will be displayed and then mailed to the individual.

Professor Barbara Sandberg from the Women's Studies Department has been with WPU since the women's program was started.

Sandberg said she feels the most significant part of this month's celebration is, "To bring to people's attention that throughout history women have not had a voice, and we need to celebrate the women who have spoken out even though it may have cost them their lives."

Calling All Students ... Calling All Students

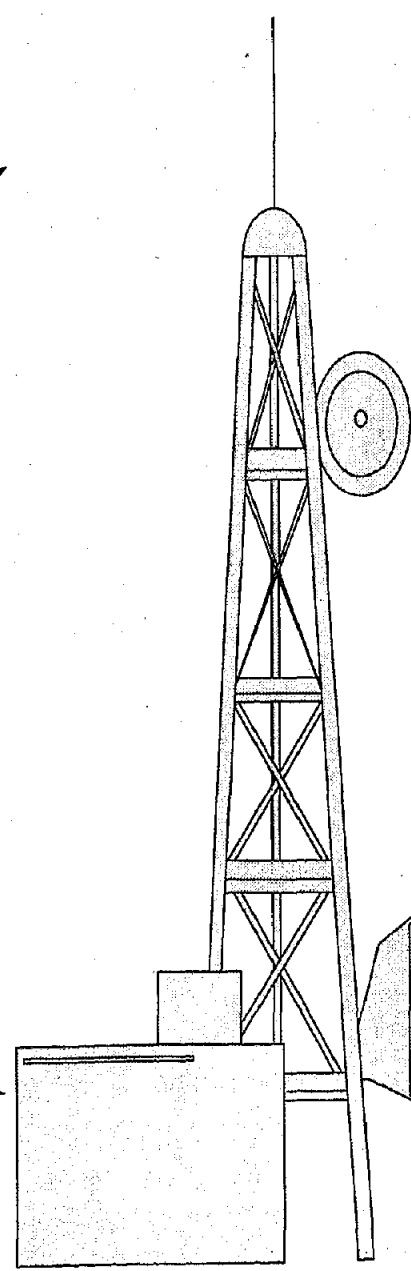
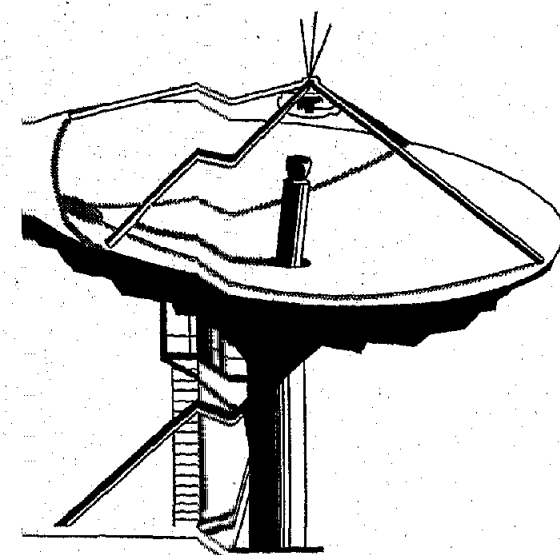
TUNE IN TO "SGA TOWN TALK" LIVE EVERY MONDAY FROM 4 - 6 P.M.

ON WCRN, CAMPUS CABLE CHANNEL 20

- Updates on SGA Issues
- SGA Music Hit Picks
- In-House Campus speakers

Hosted by SGA President Bobi Lee Messer, with special co-hosts every week!

Call the station request line, (973) 720-3335, to ask questions, get updates on the latest SGA happenings, to speak with guests or request a song.



## Work for The Beacon!

There are various positions available on the staff, including:  
**COPY EDITOR, PROOFREADER, NEWS WRITERS, SPORTS**

**WRITERS, PHOTOGRAPHERS, ENTERTAINMENT WRITERS,**

**WEB PAGE MANAGER ...AND MANY MORE!**

Call today and grasp this great opportunity to gain experience with a newspaper!

Don't wait! The semester is almost over!

Call 720-2576 or come to The Beacon office in Student Center Room 310.

# PIONEER SPORTS

## Arrigo enters the Exclusive 1000 point club!

By Jason Bizlak  
Sports Contributor

A week ago, William Paterson University junior point guard Stephanie Arrigo accomplished a feat that many college basketball players only dream of, she eclipsed the 1,000 point plateau.

"I'm very proud and glad to be playing with her," said sister and teammate Ammee Schubert. Not many people know the real Arrigo.

Schubert describes Arrigo as being "creative and fun to play with. Stephanie was edged on by an opposing team member to shoot a three pointer, the following possession she took the shot and drilled it in the girl's face.

Schubert thinks highly of her younger sister, as do many of Arrigo's teammates.

"Stephanie is a very smart and effective player for us, she can hit big shots and she knows when to pass the ball. She might have a few turnovers in a game but it is not entirely her fault. Most of the times that she passes the ball, someone isn't expecting such a good pass, or they didn't think that Steph say them," stated fellow Pioneer Kathy Sinram. "Stephanie is a great passer, shooter and defender. She takes our team to a

whole new level on the court." Off the court, "she's funny, easy to talk with, and just full of life," said the teams' leading rebounder Wendy

coached by my father," said Arrigo. After playing two seasons under her father, Stephanie went on to continue her career at the

years. Bright eyed Arrigo said, "I liked the coach as well as the campus," referring to Head Coach Erin Shaughnessy and the WPU cam-

connected to the game of basketball in a different capacity. "I coach a twelve-year-olds' team back home during the summer," stated Arrigo. Also coaching in the league are her father and sister although they never have to go head to head, because each coaches at different age levels.

As for the relationship with her family, Arrigo's says her family is really close. "My family plays a pretty big role in my life. I see my parents at least twice a week. They come to every game, and along with my sister, we do many things together."

Arrigo enjoys the freedom of living at school. She said, "It's nice to live away from home, but I only live an hour away so I get to see my family whenever I want. I can go home on the weekends but I usually don't," said Arrigo.

As for Arrigo's future, "I'm a criminal justice major with no idea of what I want to do in the future. I might want to coach or get into some aspect of the criminal justice field," said Arrigo.

Whatever she plans to do, Arrigo has one more year to help the teams quest for a NCAA National Champion and to add more points to her spectacular career.

Away from school, Arrigo is



photo by Sylvana Meneses/The Beacon

Stephanie Arrigo tries to stifle the opposition in a recent game against Montclair State University. Arrigo joined the Pioneer 1000 point club in only her junior year at William Paterson University.

Kane.

Arrigo's skills and achievements can be attributed to the fact that she has been affiliated with the game of basketball for quite some time. "I've been playing basketball since the seventh grade. I first started playing for a summer league team

high school level. "I played for Hunterdon Central High School in Flemington, NJ," explained Arrigo.

Four years passed and it was time for Arrigo to choose the college that she was going to showcase her skills at for the next four

years. Her choice was imminent.

An integral part of the team, Arrigo has high expectations this year. "We have the NCAA's coming up, and I expect our team to go pretty far," said an optimistic Arrigo.

Away from school, Arrigo is

## Pioneers trip over Rowan again

Ira P. Thor  
Sports Contributor

WAYNE, NJ----- Different season--different building--same result. For the third time in the last three seasons, Rowan was simply too much for William Paterson to handle, as the Profs blew the Pioneers out of their own building Friday evening, 74-46, to capture the Women's New Jersey Athletic Conference Championship. For Rowan, it was their third NJAC conference crown in a row, and fifth of the last seven years, as seniors Jenn Denby and Takiyah Bowen slapped the dynasty label on their stellar four year careers.

Rowan wasted no time letting the packed Rec Center know they meant business, opening the game with a 7-0 run. The Lady Profs, 24-2 (16-2 NJAC), who also bombed the College of New Jersey Wednesday 60-34 to earn a shot at a three-peat, would never look back.

Kathy Sinram, the 5-5 senior guard and co-captain of the lady Pioneers, would BANGO a three-pointer five minutes into the game to cut the Rowan lead to a 14-9, five point advantage. That's as close as it would get for top-seeded William Paterson.

For Sinram and the Pioneers, the first half would be plagued with

both poor shooting (31 percent, 9 of 29 FG), and the Rowan star-combo of Jenn Denby (5-5 senior guard- Millville, NJ) and Takiyah Bowen (5-11 senior forward-Newfield, NJ). Denby would hit 6 of 8 from the field for 12 points, and add 8 first half boards, as the Profs went to the intermission with a comfortable 32-22 lead. Bowen tallied 10 points and 6 rebounds during the first 20 minutes of the championship.

For the Pioneers, who came into the title game 12 and 0 at home, their road to the finals was courtesy of a 21 point, 75-54 blasting of the fourth seeded Montclair State University Redhawks. In both 1996 and 1997, the Pioneers captured NJAC semifinal victories just to take the two-hour drive to Glassboro to have their throats slit by the Profs. Not only was a conference title on the line this go-around, so was the #1 seed in the NCAA pairings set to be announced Sunday evening.

Despite the home court advantage, and despite the Pioneers having previously defeated Rowan at the Rec Center on January 21 by 11 points, 68-57, the Pioneers continued to be woody by treacherous shooting in the second half.

Sinram would drill another three in the opening moments to cut the Prof lead to seven. Sinram would

score 10 on the day, but only 3 of 14 from the field, including just 2 of 7 from long range. That was as close as it would ever get, as the Jenn Denby show continued in the 2nd half.

Denby hit two more field goals to expand the lead to 37-25. The Profs began to pull away after a 14-0 run. After two free throws by Dana Feltz cut the Rowan lead to 46-27, Denby sank another shot and Rowan possessed a 21 point advantage, with 15 minutes remaining.

Denby finished the title game with 25 points, including 11-18 from the floor, and 14 rebounds. Going into the NCAA tournament, Denby has 1708 points, 24 shy of becoming the all-time leading scorer in Rowan women's hoops (a distinction held by Tammy Steele, who recorded 1,732 points from 1982-86).

The Pioneers, (23-3, 17-1), shot a pitiful 16.1 percent in the second session, held in check by a stingy Rowan defensive game plan. For the game, William Paterson shot 23.3 percent-just 14 of 60 from the field. Rowan, conversely, shot 45 percent for the game (27 of 60). Rowan would lead by as many as 30, before the buzzer sounded to give Rowan a 74-46, 28 point win.

Bowen completed the final with

continued Pioneer Women page 13

## Pioneer men stumble

Ira P. Thor  
Sports Contributor

EWING, NJ-----What was originally deemed a rebuilding year for men's hoops at William Paterson following the graduation of four starters and seven seniors came to a close Thursday evening with an 87-69 loss to the College of New Jersey in the semifinals of the New Jersey Athletic Conference tournament.

The Pioneers attempted to duplicate what they achieved in 1997, when they were also the fourth seed and shocked #1 Rowan 63-61 in two overtimes in Glassboro during the NJAC semifinals. But the Lions were just too strong offensively, shooting 68.9 percent in the 2nd half (22-32 FG) and 57 percent for the game to end the Pioneers season in front of 1,270 spectators in Ewing.

The College of New Jersey will play host to Rowan in Saturday's championship, after the Profs upended Jersey City State.

The College of New Jersey (21-4) took a six point, 34-28 lead to the locker room. But a huge 2nd half of shooting helped propel them into the conference finale. For the game, TCNJ sank 36 of 63 shots, including 8 of 17 from the land of AT&T. Six Lions would

score at least nine points.

Bill Burr banged in 20 on 8 of 13 shooting, while Dewey Ferguson added 18, thanks to a solid 7 of 9 from the field. Todd Hartman compiled 12, as did Jamie Allen, who scored all his points from beyond the arch (4-7). Joe Amuri hit for 10 points; point guard Sean Covington chipped in 9.

Senior guard Arik Cotten (5-10, Morristown), paced the Pioneers (15-11) with 17, including 7 of 15, and 3 of 7 from 3-point land, and dished out six assists. David Coleman (6-6 Junior forward, Irvington), added 13, while Kevin Fleming (Freshman guard, 6-1, Camden), continued to shine, chipping in 10.

Senior forward Justin Frederick (6-4, Jersey City), scored 12 points, on 4 of 13 shooting, to finish his fabulous three-year Pioneer career with 987 career points, 13 shy of becoming just the 23rd Pioneer to reach 1,000 career points.

It is unlikely that William Paterson will receive an NCAA bid. Head coach Jose Rebimbas is expected to decline an ECAC postseason invitation (similar to NIT in Division I) once those selections are announced.

## Pioneer softball looking to soar

By Keith Platt  
Sports Contributor

With the onset of spring, the thought of bats, gloves, and ballgames come into mind. The William Paterson University Lady Pioneer Softball team will begin play with thoughts of New Jersey Athletic Conference Championships dancing in their heads.

Coming off of a disappointing 12-17 season which saw them bounced from the NJAC tournament by Rowan in the semi-final round, the Lady Pioneers will bring a more mature and disciplined team to the field.

WPU returns All-NJAC catcher Becky Perkins (who led the Lady Pioneers in batting with a .356 average), senior shortstop Jen Grasso and pitcher Gina Selvaggio to the team.

With the addition of freshman pitcher/outfielder Diane Naugle and a group of young outfielders, the Lady Pioneers will take on the likes of The College of New Jersey, Rowan and soon-to-be Division I Montclair as part of one of the toughest

schedules in NCAA Division III Softball.

In addition to playing in the always brutal NJAC, the Lady Pioneers will soon depart for Florida, where they will take on the nation's best Division III softball teams.

"Florida will help us put our own talent level into perspective," said Hallie Cohen, head Softball Coach. "Down there, we'll see a lot more teams and the competition will be really tough," added Perkins.

The Lady Pioneers are looking to take a giant leap forward this season.

"We're looking to get further than we did last year, to qualify for the NCAA tournament, and to at least get to the conference finals, if not win the whole thing and get an automatic bid to the tournament," Cohen added.

To achieve these lofty goals, the Lady Pioneers will have to do so on technical performance and heart. "Succeeding is a matter of execution," Cohen said.

Another key to achieving a championship level is a good attitude, which the team clearly

has. "We have a tremendous attitude this year, we have people who want to be here and want to win, which makes it easier," said Perkins.

The Lady Pioneers will go into this season with increased confidence as well. "We'll be one of the top teams in our conference," said Grasso, a solid defensive shortstop who batted .267 last year.

Added Perkins, "We're much more confident heading into this year, we should do a lot better this year."

Relying on a solid group of veteran infielders, young outfielders and a solid 3-person pitching rotation, the Lady Pioneer softball team will use solid defense, aggressive baserunning and good team speed (ala the St. Louis Cardinals of the early-mid 1980's) to be a vastly improved team this year and will be very competitive both within the NJAC and within the NCAA as a whole.

Look for WPU to qualify for the NCAA tournament and reach the conference title game. The Lady Pioneers hope the season won't stop there.

## Pioneer Faces

Indoor Track  
Rohan Jackson

On Sunday  
February 15,  
Rohan Jackson



Women's  
Basketball  
Kathy Sinram

Kathy Sinram,  
5'5" Senior Guard

placed second in a photo finish 55 meter dash in the New Jersey Athletic Conference Indoor Track Championship at Lehigh University in Bethlehem, Pennsylvania. Rohan ran the 55 meters in 6.53 seconds. The 6.53 qualified Jackson for the Division III Indoor Track National Championship held at Brandeis University in Waltham, Massachusetts in March. Rohan, of Irvington formerly ran for Clifford Scott High School.

helped lead the women Pioneer Basketball team to a 75-56 win over Montclair State University in a New Jersey Athletic Conference tournament game Wednesday. Sinram lead the team in scoring with 17 points and contributed 8 rebounds in the win. Sinram added 10 points in the Pioneer's loss to Rowan in the NJAC Championship game. This is different kind of game for Sinram, who is normally a "defensive wizard" for coach Erin Schaughnessy.

## Pioneer Women

continued from page 12  
14 points and 11 Windex wipings. Suzanne Lynch (5-11 junior forward-Bridgewater, NJ), complemented both stars with 21 points-13 of which came during the 2nd half.

Dana Feltz, (5-10 Junior forward-Sayreville) scored 14 on 5 of 9 and eight rebounds. Sophomore forward Wendy Kane (5-9, West Milford) chipped in 7 and 9 rebounds).

William Paterson undoubtedly will be the #2 seed in the Atlantic region when the NCAA field of play commences later this week. Round 1 will be held Wednesday,

March 4, with the Round of 32 games played on Saturday, March 7. The Pioneers should be the benefactors of two playoff home games prior to the Sectionals (Sweet 16). Rowan, with the win, has secured the top spot.

The Pioneers #11 national ranking may drop. Rowan was eighth in the nation amongst Division III squads. Wisconsin-Oshkosh (22-1) takes over the #1 spot in women's hoops after former #1 St. Benedict of Minnesota suffered their first loss versus 22 wins. NYU, last season's national champions, is currently 22-4, and 12th in the poll.

<p align="center">★★★★★ <b>JERSEY SPORTS CAFE</b> ★★★★★</p> <p align="center">125 Park Ave East Rutherford, NJ</p> <p align="center">Call for Information <b>201-933-3308</b></p>			<p align="center"><b>RESTAURANT ♦ SPORTS BAR ♦ NIGHTCLUB</b></p> <p align="center"><b>JUST RENOVATED!</b></p> <p align="center">≈ NEW STAGE ≈ ≈ NEW BAR ≈ ≈ NEW DANCE FLOOR ≈ ≈ NEW LOOK ≈ ≈ NEW EVERYTHING! ≈</p> <p align="center">• NEW ATMOSPHERE • NEW LIGHTING EXPERIENCE • NEW SOUND EXPERIENCE</p>		
<p align="center"><b>THURSDAY, MARCH 5</b></p> <p align="center"><b>UUU</b></p> <p align="center"><b>\$1<sup>00</sup> DOMESTIC MUGS</b></p>		<p align="center"><b>FRIDAY, MARCH 6</b></p> <p align="center"><b>Up-All-Nite</b></p> <p align="center"><b>\$1<sup>00</sup> DOMESTIC MUGS</b></p>		<p align="center"><b>SATURDAY, MARCH 7</b></p> <p align="center"><b>Falling Walls</b></p> <p align="center"><b>\$1<sup>00</sup> DOMESTIC MUGS</b></p>	



# Hey Students...

# WE WANT YOU!



Your SGA is busier than ever bringing about your changes!  
We need your help! VOLUNTEER YOUR TIME AND  
TALENT WHERE IT BENEFITS YOU MOST -  
**YOUR SGA!**

(P.S. It will look great on a resume!)

Are ya interested? Great! Contact:

**Bobi Lee Messer, SGA President (973) 720-2739.**

Or e-mail me at [quetila@frontier.wilpaterson.edu](mailto:quetila@frontier.wilpaterson.edu)

## Beacon Classifieds

OUR RATES	HOW TO PAY	DEADLINES	SEND ADS TO:	ATTN: Classifieds
To run 20 words for one issue is \$6.50, 21-35 words \$7.50, each additional 10 words \$1.00	All classified ads must be paid in advance, unless you have an account with the paper.	Classified ads must be placed by 12:00 P.M. Friday before publication.	The Beacon 300 Pompton Rd. SC310 Wayne, NJ 07470	checks or money orders payable to: <b>THE BEACON</b>

**3F Rmmate\$ Wanted** to share Haledon Apt. \$300 security \$250 per month (+ utilities.) 4BRms total opens June 1, nonsmokers no parties, clean, responsible, 21yrs And older only, Kitchen, living Rm, 1 Bath. call Nicole 720-1978

**Quality Day Camp** in Morris County has the following summer positions open: Counselors, Swim, Photography, Drama, Music, High Ropes, Sports, Roller Hockey, Maintenance. Please call 973-895-3200 for further information.

### Beacon Personals

**To Kazy:** Awesome piercing! What next?! - A

**To my Little Jen:** I am so happy you chose me as your Big! Make me Proud, I know you can do it! I Love You! - Your Big, Melissa

**To my Little Blanca (AST Associate):** Welcome to my family tree! Keep up the good work! I'm always here for you! Good Luck! Love always your Big Aryn

**Kelly (AST Associate):** Make me proud. I'm always here for you! I know you can do it!! Love your Big, Alicia  
**Michele (AST Associate):**

Welcome to the family tree little! Keep up the good work. I love you! Love Your Big, Wulffy

**To the Sisters of Theta Phi Alpha:** Thank you for being there for us, and Mom, thank you for supporting us!

**To Big Vin:** the difference between " " and " " is subtle not unlike the difference between doing nothing and being Max. But the difference could be monstrous. Norm

**To poem reader (her):** do you ever check your e-mail? I wrote you like a week ago and you have not yet responded.  
the Shining Young Sage

**To Spielberg:** the thing about an authentic movie about lesbian tigers is, that it's never been done. Oh yeah, and will probably die during the sex scenes. But forget about it.  
1 of the filmmaker\$

**To Mel B:** if Mr. A, Mr. B, and Miss. C don't show up for class then they're probably in bed. But the interesting part is, in what bed are they. Mr. A

**To the girl in the Mob:** One phone call. All it takes is one phone call to get Sigma A... forget it.  
Beta Epsilon... (you know the rest)

**Amy-** Are you still alive? Let me know when your

break is, ANNIE has begun! - Pam

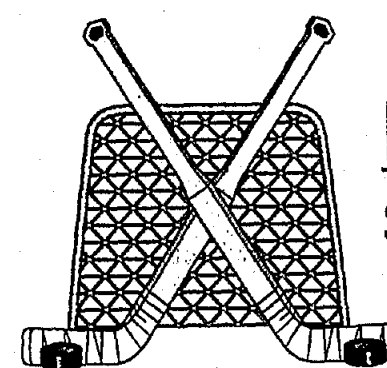
**To all at White Hall-** Party in Room 203 Thursday night! Plenty of beverages will be served - Brandon

**To all my writers-** enjoy the Spring Break and be ready to work when we get back! Thanks- Pam

**Check out Spanky's** webpage at <http://home.earthlink.net/~gmeneses>. Great photos!

**Namron** - no coffee over spring break? awww-alemap  
**RUSHBEACONRUSHBEACONRUSHBEACONRUSHBEACON**

## FLOOR HOCKEY



ENTRIES DUE BY

**MARCH 6TH**

\$30 team fee

CAPT'S MTG:

TH. 3/19 12:30

## LET'S PLAY BALL!



**MEN'S**

**SOFTBALL**

**ENTRIES DUE:**

**MARCH 6TH**

**\$30. entry fee**

### Operations Assistant

**Immediate Job Opportunities Available**  
Monday Through Saturday Shifts  
Flexible Hours  
**Make Your Own Schedule**  
**Earn While You Learn**  
**Apply In Person:**  
IPC  
1 Madison Street  
Building F  
East Rutherford

Think you're pregnant?  
Partner pressuring you?  
Let's talk it over...  
we can help.

Our free & confidential services include:  
• Pregnancy Testing  
• Counseling  
• Post-Abortion Support



(973) 538-0967  
24-hour Hotline

Morristown • Wayne  
Jersey City

**FREE ROOM and BOARD, PLUS \$75 a WEEK**  
We have a great situation for a great person!



We're looking for the perfect someone to help us out with childcare. We live approximately 3 miles from William Paterson University in a big, old Victorian house. We have a 5 year-old daughter named Murphy and we need someone to watch her from 7 a.m. to 8 a.m. and then from 2:45 p.m. to 3:30 p.m. The perfect someone must have a car to get her bank and forth from school. In addition, we need childcare one evening during the week. This is a great opportunity for a college student who wants weekends off. We are able to work around you schedule if the fit isn't perfect.

If interested, please call Lynn McVey 973-365-5195 DAYS  
973-304-0344 EVENINGS

ON SALE NOW!



**BOB WEIR ROB WASSERMAN**  
**JAY LANE MATTHEW KELLY**  
**DAVE ELLIS JEFF CHIMENTI**

PLUS GUESTS  
**SIXTEEN HORSEPOWER**

ONLY AREA APPEARANCE!

**MARCH 25**  
**7:30 PM**

**WILLIAM PATERSON UNIVERSITY**  
**REC CENTER**  
**WAYNE NJ**

TIX AT THE REC CENTER BOX OFFICE, THRU ALL TICKETMASTER OUTLETS & CHARGE-BY-PHONE (201) 507-8100 • (609) 520-8383. EVENT DATE & TIME SUBJECT TO CHANGE.

PRODUCED BY METROPOLITAN ENTERTAINMENT GROUP  
AN OGDEN ENTERTAINMENT COMPANY VISIT US AT [WWW.CONCERTHOTLINE.COM](http://WWW.CONCERTHOTLINE.COM)

### Help Wanted

Looking for Performers to do  
Costume Characters  
\* Must have own car  
\* Must like children  
\* Great Pay  
\* Flexible hours  
Call 800-539-8743

### SONG WRITERS & LYRICISTS WANTED!

"SONG CONNECTION"  
The best way to your next hit.  
1-800-789-SONG  
818-348-0494

Banking BOE  
**PROOF MACHINE OPERATORS**  
Proof Encoding Dept.

Summit Bank offers attractive salaries, comprehensive benefits, and plenty of room for personal and professional growth. To learn more about these PART TIME opportunities in RIDGEFIELD PARK, and how to apply, please call anytime 7 days/week.

(973) 736-9898  
VOICE BOX #4400

**SUMMIT BANK**  
Member of the Summit Bancorp

"VOICE BOX" is a registered trademark of VOICE BOX SYSTEMS, Inc.

### ATTENTION:

**EDUCATION, PSYCHOLOGY, SOCIOLOGY MAJORS**  
Gain valuable resume and field experience and make a difference in a child's life.

Call for an interview for summer positions at  
**RAMAPO COUNTRY DAY CAMP**  
**914-356-6440**  
Counselor/Specialty summer positions

# Multicultural Awareness Week

## February 27 - March 6, 1998

### UNlty in diVERSITY

Monday, March 2, 1998

#### "WHY I BECAME A WOMEN'S RIGHTS MAN"

Fred Morsell portraying the abolitionist "Frederick Douglass"

7:00 p.m., Student Center Ballroom

Reception will follow.

Sponsored by the Sociology Club, Phosphorus & The Women's Center

A Bridge Event for Multicultural Awareness Week & Women's History Month

Tuesday, March 3, 1998

#### "LEARNING FROM OUR SHARED HISTORIES"

Conversations with Frederick Douglass, Elizabeth Cady Stanton & Sojourner Truth

Performance and Panel Discussion

11:00 a.m. - 3:00 p.m., Student Center Ballroom

Reception included

Sponsored by the Pioneer Players, Phosphorus, Women's Center & SAPB

#### "A CULTURAL X-CHANGE"

Gambia, West Africa Students & Faculty Visit WPUNJ

5:00 p.m., Student Center Ballroom

Dance Performance, Film & Reception

Sponsored by the Communications Dept. & the Black Student Association

Wednesday, March 4, 1998

#### ASPECTS OF NATIVE AMERICAN LIFE

Teepee Display & Lecture

Artifacts and Authentic Food

Student Center Lawn & Ballroom

Sponsored by the Anthropology Club

#### "A NIGHT IN INDIA"

Dance Performances & Authentic Food

Lecture given by Dr. Kirit S. Parikh

Senior Economic Advisor in the United Nations

Vice Chancellor of the Indira Ghandi Institute

6:00 p.m., Student Center Ballroom

Sponsored by the United Asian American Club

Thursday, March 5, 1998

#### MULTICULTURAL LUNCHEON

11:00 a.m. - 1:00 p.m., Student Center Ballroom

Students \$3.00, Others \$5.00

Sponsored by SCEC

#### MULTICULTURAL AWARENESS WEEK

KEYNOTE SPEAKER: DICK GREGORY

Comedian, Author, Nutritionist, Activist & Actor

1:00 p.m., Student Center Ballroom

Reception to follow in SC Art Gallery

Sponsored by SABLE, BFA & SAPB

Friday, March 6, 1998

#### "BREAD, BREAD, BREAD" OPEN HOUSE

Featuring breads from around the world.

Hunziker Wing 35

Sponsored by SEEC & WPUNJ Child Care Center

#### BUS TRIP TO THE BROADWAY PLAY "CATS"

Sponsored by the Office of International Students

*All activities are sponsored by the Student Government Association, Spanish Club, Sociology Club, Pioneer Players, Anthropology Club, United Asian Americans, SAPB, SCEC, SEEC, SABLE, BFA, Phosphorus, The Women's Center, Communications Department, Black Students Association & The Office of International Students.*

*For additional information, contact  
the Office of Campus Activities, Assistant Director, Ms. Dorian Douglas,  
Chairperson of the Multicultural Awareness Week Committee, at (973) 720-2518.*

