

The Beacon

COPYRIGHT 1997 VOL. 62 NO. 22

FREE
25¢ outside of Passaic County

FEBRUARY 17, 1998

Hazing workshop addresses Greek system

By Sherri Sage
Staff Writer

Members of campus community discuss illegal hazing procedures

Hazing, as defined by William Paterson University and the Greek Senate, is "any action taken, created, or situated intentionally (on or off campus) to produce mental or physical discomfort, embarrassment, or ridicule. Such activities and situations include: paddling in any form, creation of excessive fatigue, physical and psychological shocks, wearing apparel which is conspicuous and not normally in good taste, engaging in public stunts and buffoonery, and any other morally degrading games or activities."

To educate the WPU Greek community, on the fourth Sunday of every semester, the Greek Senate and Campus Activities sponsor an Anti-Hazing Workshop.

This semester the workshop was held on February 8 at 9 p.m. in the Student Center Ballroom.

Dan Sheridan, Greek Senate vice president, began by saying, "Hazing is a serious issue and must be addressed."

He then read the definition of hazing and the Pledge Bill of Rights which were included in the pamphlet handed out to audience

members, along with a pledge registration form and contract.

Don Phelps, assistant director of Campus Activities, said that the purpose of the workshop is to make the associates (pledges) aware of hazing through the use of guest speakers, paperwork, and brochures. It also serves to remind active members of the negative aspects of hazing and why it doesn't belong in an organization.

The first speaker was Aubyn Lewis, a counselor from the WPU Counseling Center and alumnus of Kappa Alpha Psi.

"I'm not going to lecture about

the evils or threats. I want to remind you what's at stake. Times have changed. If you let it happen, when it goes over the line, it's your choice," said Lewis.

"It's not a cat and mouse game. It can be the most wonderful, thrilling, exciting experience," he added.

Lewis also said that he hopes the fraternity brothers and sorority sisters will be responsible, credible and fair. If they are not, it puts Phelps and the organizations at

risk.

The second speaker, Alex Malino, alumnus of Alpha Phi Delta, told the active members that there's a fine line between poor taste and being illegal. He also said to the associates, "It is the best time of your life. You have something to look forward to the rest of your college career."

Nicole Stefano, alumnus of Phi Sigma Sigma was the last speaker. She told the associates that the active members, "wouldn't make

see HAZING page 3

WCRN broadcasts on campus again



photo by Sylvana Meneses/ The Beacon

Ian Lainof, member of the WCRN station on campus is pleased to be back on the air after the station was shut down at the end of last semester. The station celebrated on Wednesday with a ribbon cutting ceremony in Hobart Hall.

Robyn J. Caputo
News Contributor

After an entire semester of inactivity, William Paterson University radio station WCRN is finally back on the air waves. Last semester the radio station, which is broadcast over channel 20 of campus cable, was shut down for a number of reasons, including over

\$3000 of stolen equipment, and misrepresentation at two Student Government Association meetings. The policy of the SGA states that if a club's representatives are unexcused from a meeting, then the club is deemed inactive.

Two current members of the station, Ian Lainof and Mike Dominguez, fought to get the station reactivated. This task included

rewriting the club's constitution, and then presenting their proposal before the SGA.

According to Lainof, the purpose of this smaller station on campus is to, "provide a true college radio atmosphere." Lainof also commented that the station allows for much more freedom without the professional structure of other stations, and it provides a learning environment and experience for anyone who is interested in the field of radio broadcasting.

The station was reactivated as of Tuesday, February 3, and is currently operating Monday through Friday from the hours of noon to midnight. All disc jockeys have a two hour time slot to play the music of their choice. They plan on having a variety of programs including personal music selections, talk shows, political discussions, and sports shows.

The club currently consists of more than 30 members and is under the advisement of Dr. Tina Leshner and Dr. Reynold Weindenaar. However, the club is still accepting more students with an interest in broadcasting. Anyone interested can call the station at 720-3331.

Pagan Student Association hosts new events

The Pagan Students Association will host a new series of Thursday films programs in the Library Film Auditorium beginning February 19 from 12:30 p.m. - 2 p.m. The film, "Witchcraft in America," will be shown as the premiere presentation. This documentary examines and contrasts four different ideologies: Wicca, Paganism, Voodoo, and Satanism and includes a history of the Salem Witch Trials. A descendant of the famous Towne family of Salem will be on hand to discuss the famous witchhunts and the persecution of his family. A question and answer session will follow.

"The Handfasting of Clan Avalon," a video of a 1996 Texan Wiccan wedding ceremony will be shown on Thursday, March 5. The video shows many prac-

tices of modern Wiccan and Neopagan ritual.

The Pagan Students Association was formed in 1997 to promote the study of Goddess and Earth-based philosophies. "We believe it is time to present alternative viewpoints to the William Paterson University community," said club President Adrienne Roy Tollin, a Fine Arts major. "During the next few months, we hope to present workshops, field trips, and activities that will broaden the understanding of Paganism, Shamanism and Goddess-based ecological philosophies. Wicca and Neopaganism teach respect for the ecology of our planet, and see the Earth not as

see PAGAN page 3

Tuberculosis death at nearby college raises awareness

By Amy Elizabeth Briggs
News Contributor

Late last week a student at Bloomfield College died as a result of Tuberculosis, commonly called TB. According to the National Tuberculosis Center, the highest incidences are seen in the countries located in Africa, Asia and Latin America. The recent TB epidemic can be partially attributed to the high rate of immigration from countries that have a high incidence rate of TB.

Immediately following the death of the student, Bloomfield held a campus wide meeting to discuss the TB epidemic and the disease itself.

Peggy Heller, Director of Communications at Bloomfield said, "We have undergone a week of intensive informational sessions to speak to the students, faculty and administration".

The National Tuberculosis Center is providing free testing for all persons who had come in contact with the affected student at Bloomfield. Any other interested students have been invited to undergo TB testing if they would like to. Heller says, "There has been a lot of interest in this".

Tuberculosis is an infectious disease that is caused by a bacteria that is spread from person to person by airborne droplets that are either coughed or sneezed up. The bacteria multiply once they reach the upper lobes of the lungs where the oxygen level is the highest.

In most cases, the body's immune system promotes healing almost immediately. However, in

some cases, the bacteria can go undetected and spread to other organs in the body. A small percentage of people can contract the bacteria and remain unaffected by TB until the immune system becomes compromised by age or disease.

TB has been making resurgence in recent years. One of the greatest influences in the rising TB trend is the Human Immunodeficiency Virus (HIV) infection.

The National Tuberculosis Center said, "Among immunocompetent people infected with the tuberculosis bacteria, one in ten will fall sick in their lifetimes, but among those with HIV, one in ten per year will develop active TB, while one in two or three tuberculin test positive Acquired Immunodeficiency Syndrome (AIDS) patients will develop active TB."

Multi-drug resistance is another major factor in the resurgence of TB. The National Tuberculosis Center said, "Drug resistance in TB occurs as a result of tubercle bacillus mutations."

If only exposed to one antibiotic, the predominant bacilli will be killed, but the others will continue to multiply. Giving multiple effective drugs simultaneously will inhibit the multiplication of the bacteria. The treatment for TB is usually a four drug regimen of antibiotics.

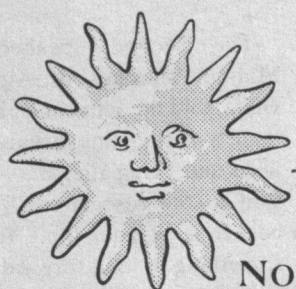
The National Tuberculosis Center also said that with the four drug regimen, there should be a rapid clinical improvement and a significant decrease in the bacteri-

see TUBERCULOSIS page 3

THE HEAT ZONE TANNING SALON

"20 Minute Vacations Available Daily"

ALL NEW HOT LAMPS

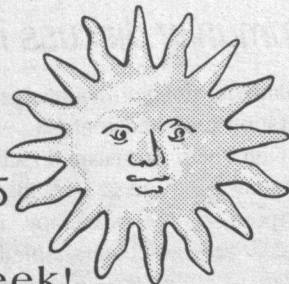


Prices:

One session \$6

Six sessions \$25

Two week unlimited \$35



Now Open 7 Days a Week!

**1 Month
Unlimited**

for only

\$50

with coupon •
Cannot be combined with any other
offer • Exp. 3/1/98

ONLY 2 WEEKS

UNTIL SPRING

BREAK

**10
Sessions**

for only

\$40

with coupon •
Cannot be combined with any other
offer • Exp. 3/1/98

ONLY 3 Min. From Campus across from Wayne Hills Mall

87 BERDAN AVENUE, WAYNE

973-305-6700

Pre-Law Workshops
at William Paterson University
Spring Semester 1998



Minorities and Law School

What are the special problems faced by minorities in attending law school? What support services are available for dealing with these problems? This workshop is designed to help answer these questions. It will be presented by Marcia Wilson Brown, Esq., Assistant Dean and Director of the Minority Student Program at Rutgers School of Law - Newark.

Thurs., Feb. 19, 12:30-1:45 pm
Science Building, Room 339

This workshop is open free-of-charge to all William Paterson students, regardless of major or year in college. Whether you are sure you want to go to law school, or even if you are just considering the possibility, you are welcome to attend this workshop -- and all the other pre-law workshops offered at William Paterson.

Future Pre-Law Workshops This Semester

Financing Your Law School Education - Tues., Feb. 24, 12:30-1:45 pm, Sci. 369
Unfortunately, law school costs money. Lots of money. Financing your law school education requires careful planning. This workshop will discuss your options. It will be led by Sharon Williams, Director of Financial Resource Management at Seton Hall Law School.

What Law School Is Like - Tues., Mar. 3, 12:30-1:45 pm, Sci. Room 369
This workshop will be given by a panel of current law students, including recent William Paterson graduates. They will be able to give you the low-down on what law school is really like, as well as some pointers on what they did as undergraduates -- or wished they did!

The Profession of Law: Life As A Lawyer - Part I: Tues., Mar. 17, 12:30-1:45 pm, Sci. 369; Part II: Thurs., Mar. 19, 12:30-1:45 pm, Sci. 369 Is law the right career for you? This two-part workshop will help you find out. Part one will assist you in assessing your own interests, needs, and abilities. Part two will discuss the different things you can do as a lawyer. The workshop will be led by Linda Mercurio, an attorney and faculty member in the William Paterson University Department of Accounting and Law.

For further information, contact Stephen R. Shalom, Political Science Department, Pre-Law Coordinator, Science Bldg. Rm 344, 720-3433, shalom@frontier.wilpaterson.edu.

Campus Calendar

Tuesday, February 17, 1998

Women's Center- Women's discussion group co-led by Professor Joan Griscom, Women's Studies Dept., and Meryle Kaplan, coordinator of the Women's center. Meets every Tuesday 3:30-4:30 p.m. Women's center- Student Center 214. Contact Meryle Kaplan x2946.

Wednesday, February 18, 1998

In honor of African American Heritage Month - The Women's Health Information Network is proud to present OLGA COMMISSION: WPUNJ Faculty member, Department of Community Health with Lois Scion, Student Presenting African-American Women's Health: Take Wellness to the Heart: 12:30-2:00 p.m., SC 203-4-5. Contact Meryle Kaplan x2946.

Thursday, February 19, 1998

Student Business Association- Guest speaker- Dana Yodlowsky from Office Team, a division of Robert Half Employment Agency. Hunziker Hall 208 @ 12:30 p.m.

Pagan Students Association- Pagan film series presents: "Witchcraft in America"- with special guest speaker and question and answer session to follow. Free to all. 12:30 to 2:00 Library Film Auditorium. Adrienne (973)575-6849.

Career Development Center- Intro to Resume expert. *Bring resume expert diskette. Atrium Room 114, 12:30-2p.m. For info call x2281, 2282, 2440

Pre-Law Program- Minorities & Law School. A workshop for students thinking about careers in law. Science Building Room 339 12:30- 1:45 p.m. For info call Stephen R. Shalom x3433, email shalom@frontier.wilpaterson.edu

Friday, February 20, 1998

Pagan Students Association- Guided Meditation - "Heartsharing". Free to all. Light refreshments will be served. White Hall Lounge 10 to 12 noon. Adrienne @ (973) 575-6849.

COLGAF- Café Abyss - Musical performance by Tom Kropp & Bobby Syvarth Combo. Billy Pat's Pub 9 p.m. For info call Joseph at x5109.

the Beacon

A NEWSPAPER THAT'S CLEARLY FOR YOU

Norman C. DeFilippo
Editor-In-Chief

Pamela Langan
News Editor

Matthew Halpern
Business Manager

Ed Erlenmeyer
Insider Editor

Michael S. Fox
Circulation Director

Tim Bornemann
Assistant Insider Editor

Sylvana Meneses
Photo Editor

George Robb
Academic Adviser

Michael S. Laclair
Sports Editor

Sophia A. Brooks
Danielle Gabriel
Al Giamarino
Dave Roe
Sherri Sage
Staff Writers

*Financial Services
Provided By*
Charlotte O'Brien
Barbara Stomber

The Beacon is published on Monday and serves Haledon, North Haledon, Wayne and the William Paterson University Campus Community. Business/Editorial offices are located on the campus of William Paterson University in the Student Center, Room 310, Wayne, NJ 07470 -973-720-2248. The Beacon receives no money from WPU or its student body and therefore relies solely on advertising revenue to operate.

Ben Shahn displays alumni and student art

By Amy Elizabeth Briggs
News Contributor

Currently on display at the Ben Shahn Galleries is an exhibit entitled *The Biennial: Lines of Direction*. Curated by Judith Landsman, *Lines of Direction* is a compellation of works by various artists that are creating their own styles.

The show includes a combination of artists who are very well known, as well as some students and alumni of William Paterson University.

Landsman says she chose to name the exhibit *Lines of Direction*, "because as an art historian, you find a lot of fad, fashion, schools or styles (in art). These works are very individualistic."

Landsman compared the show to the turn of the century where artists like Cezanne, Picasso and Matisse were all emerging in their field with different styles and forms all at the same time.

All of the pieces included in the exhibit were chosen from a library of slides that new artists can send their work to. Although Landsman is an adjunct faculty member, she said that, "some of the works are



photo by Carolyn Fuge / The Beacon

Pictured above and right, the Ben Shahn Gallery is the host of a new exhibit entitled, "The Biennial : Lines of Direction." This exhibit includes artwork from William Paterson University alumni and WPU students. The exhibit will be in the gallery for the remainder of the month.

totally new to me." She went through over 1000 slides to find the works she wanted to include in the show.

Works in the show consist of sculpture, painting, computer generated art and more. Lillian Schwartz, an artist featured in the exhibit, is known for her work in video, film and computers.

Artwork of Scott Beattie, a

WPU alumnus, is also featured in the show. His sculpture of two jockeys was created especially for this exhibit. Another notable contributor to the show is George Segal. His pastel on paper "Jim" is on loan for the show.

This exhibit illustrates such a wide variety a style, color and medium that most individuals would be able to find a piece that appeals to them.



photo by Carolyn Fuge / The Beacon

Tuberculosis scare at Bloomfield College raises health concern

from **TUBERCULOSIS** page 1
al count. After one month, the patient should feel better, and have regained weight.

"Improvements will be visible on X-rays for three to four months. If the disease were initially severe, the end of the treatment may not be reached for a year."

Some students at William Paterson University are not highly concerned with a possible TB epidemic on the campus.

Tim Bruno, a junior said, "I'm not worried about getting Tuberculosis here. I think the incident at Bloomfield was more of a random occurrence than a part of an epidemic."

Dr. Marin Neilan of the WPU Health Center says that the best way to avoid TB is to keep healthy. Regarding the probability of a case of TB at WPU, Neilan says, "It is always a possibility, more so in a community like this, but it is very unlikely."

Neilan also stated that in the 10-12 years that he has worked at the Health Center, there has possibly been one case of TB on campus that he is aware of, but no more than that.

"I think we'll all be okay as long as we take a proactive stance," said Neilan.

However, Neilan does think that WPU may need to include TB testing as a part of the admissions process, simply as a precautionary measure for the future.

The symptoms of TB include a cough, sometimes severe, and either the coughing or spitting up of blood. Weight loss and excessive sweating are also symptoms of TB.

Neilan says that the symptoms of TB are very similar to those of pneumonia, so TB often gets overlooked at its onset. For more information about tuberculosis, call the National Tuberculosis Center at 1-800-356-4819.

Hazing workshop informs students about law

from **HAZING** page 1

you do anything that would hurt you or something that doesn't have a reason. You may not understand why you're doing it at the time but you will later," said Stefano.

At the end of the workshop, Phelps said that anyone who had questions should talk to him. He then welcomed the associates into the Greek system. "You are about to start on one of the most exciting times you're going to have," said Phelps.

He reminded students not to cross the line between hazing and constructive pledging activities.

"Hazing has existed on the WPU campus in the past," said Phelps. "There are chapters, activities, and associates who are not welcome on campus for involvement with hazing," he added.

Phelps also warned students to be careful when alcohol is present because 99 percent of hazing

deaths were alcohol related.

Phelps concluded the workshop by saying, "Hopefully this is last time we hear about hazing this semester."

According to Tina Coella, 19, sophomore, if asked to do something that involved hazing, she would not do it because it is illegal. She also said that some pledge activities she may have to participate in are driving the active members around and learning the Greek alphabet. "I think I'm going to have to earn my letters," said Coella.

Christy Finn, 19, sophomore, said that during pledging she'll have to be up for anything. She feels the purpose of pledging is "to be a part of a family away from your family."

John Marilla, 18, freshman, said that he knows pledging is going to be hard. "Whatever they throw at me, I'll make the best of it," said

Marilla. He also said that if he were asked to do something involving hazing that was too extreme, he would make it a point to say something about it. However, he said that, "certain things help you in the long run."

According to Marilla, the purpose of pledging is, "to make me a better man and a better person. It makes you closer to the guys in the fraternity when you're done. The more friends you have, the easier life is."

According to Phelps, the reason for pledging is to "orientate students to the organization, it's traditions, it's programs, and ideals. Joining is not a casual relationship. These are friends hopefully for life. You can't become friends unless you find out what you have in common, what your ideals are, and what you stand for," said Phelps.

Pagan Student Association offers alternative events

from **PAGAN** page 1

a planet on which life exists but rather as a living planet."

The new Pagan club appeals to many WPU students. "I was looking for a club that was different and relates to how I feel about life in a spiritual way," said Rohini Upadhyay, an Exercise Physiology/Business Management major. "I especially enjoy the club's guided meditation sessions."

"I've been interested in alterna-

tive religions for a while," added Fine Arts major Kazy Porpora, a junior at WPU.

"I've been reading up on it for some time but one can only go so far with books. I was looking for people of like mind and hadn't found any until the Pagan Student Association was formed."

The Pagan Student Association's regular meetings are held every Tuesday between 11 a.m. and 2 p.m. in room 206 of the Ben Shahn building and are open to all members of the university

community.

The club also hosts guided meditation session from 10 a.m.-noon on Fridays in the White Hall lounge. Participants are asked to arrive on time and it is recommended that comfortable clothing be worn. These meditation sessions are free to all participants and light refreshments are served.

For further information, email Adrienne Tollin at PaganEarth@aol.com, or phone (973) 575-6849.

Beacon corrections

In the February 9 edition of *The Beacon*, the article entitled "Black Box comedies open next week," omitted cast member Tina Glowacki from the cast list of the play "Adaptation." In addition, the article concerning the opening ceremony of African Heritage Month stated that the theme for the month is "The Time for Revolution." It should state that the theme is "Time for The Revolution."

The Beacon takes responsibility for any mistakes printed in the paper. Anyone who wishes to bring errors to the attention of *The Beacon* staff should call the Newsroom at x2576.

Opinions & Review

The Beacon

EDITORIAL BOARD

Pamela Langan • News Editor
Ed Erlenmeyer • Insider Editor
Tim Bornemann • Assistant Insider Editor
Michael S. Laclair • Sports Editor
Sylvana Meneses • Photo Editor

Norman C. De Filippo
Editor-in-Chief

Mailbag

MEISA defends Battle of the Bands

To the Editor:

This is in response to Michael Possumato's letter about how he felt the selection of bands for Music & Entertainment Industry Student Association's (MEISA) "Battle of the Bands" was unfair.

Mr. Possumato states "If 10 bands can perform in the allotted time, then the first 10 bands to submit their complete information should play." We at MEISA feel this notion is absurd. MEISA's "Battle" was not about who can get their press kit in the fastest. We had about 30 bands submit their tapes and information, and felt the only fair way to decide who would

play would be to listen to them all and then democratically vote on what bands were the best.

MEISA felt listening to the entries and voting was the best way to decide. Having a "free-for-all" was simply not the answer.

We at MEISA are proud of the quality and diversity of the music played at the Battle of the Bands, and by the turnout, we know a lot of other people were too. We apologize to anyone who's feelings were hurt by not being picked to perform.

Lauren Van De Polder, David Lehner, Matt Zmigrodski, and the rest of MEISA

Students bring honor to WPU

To the Editor:

On a recent Friday a group of students from the Catholic Campus Ministry, Alpha Phi Omega, and Phi Kappa Tau joined to serve the poor! These involved William Paterson University students bring honor and pride to our community. Not only have they visited Eva's Kitchen, in Paterson, through all of last semester, but they have committed their time to continue this important outreach through planned Fridays of this semester.

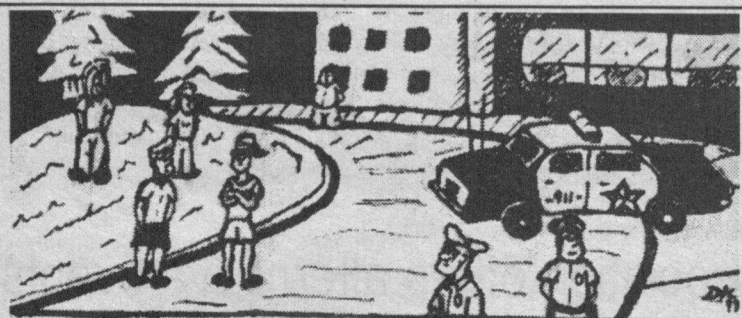
This is no picnic. I had the honor of working alongside dedicated young men and women as they set the tables, served the food, chatted with the (over 200) clients, cleaned the tables, handed out extra food for the clients to take with them, and left Eva's as clean

and as neat as we found it ... with a difference. The 200 plus hungry people were fed with the food they served and honor was bestowed on the university, as these students were filled with the gift of giving to the poorest of the poor.

Thank you: Mike Violante, Jim Mizzzone, John Walling, Brandon Robinson, Pete Marione, Rebecca Lichtenfeld, Janine Latella, Mark Skop, Christine Sariment, Fiona Krammer, and Lena Clemons. Your example brings hope to a world in need of service, love and respect!

If anyone of our university community members would like to join us for our next visit ... call me at x3524!

Father Lou Scurti
Director, Catholic Campus Ministry



I CAN'T BELIEVE THIS! WHY WOULD SOME IDIOT SET FIRE TO HIS OWN DORM? SO WE CAN FREEZE TO DEATH, THAT'S WHY!



MAYBE HE WAS BURNING EVIDENCE OR SOMETHING. OR MAYBE HE'S JUST STUPID.

Damien Kincannon

Monday is Tuesday; Tuesday is Monday; and you must take Tuesday off, so when do you work?

Sunday, Monday, Tuesday, Wednesday, Thursday, Friday, and Saturday: They may only be seven days to some people, but to students, especially working students, the way school and work schedules are planned at the beginning of each semester is nothing less than a juggling act.

But now, because too many Monday classes will be missed, students must attend their Monday classes on Tuesday 17. Although it may be a simple thing to say, accomplishing said feat is leaving many "jugglers" out of breath.

The simple fact of the matter is that some schedules are rigid. Despite the Spring schedule's advanced notice, which was not offered last year, some students will be unable to attend class on February 17.

Also, students miss class from time to time. There is only so long one can go through the year without missing a class due to sickness, transportation problems, or family obligations. This is to be expected.

But what if an absence on the 17 puts one over the limit for the amount of absences a professor allows? Should a student really be penalized for missing that

day of class?

Further complicating the situation is that some students actually have exams on the day of this awkward schedule. Although, at least one professor has said having to work was a valid excuse to miss the exam — that is only provided students have a note or some kind of verification that they actually were at work. Since when do college students bring notes to class?

Obviously this scenario is creating its own problems, but what is the solution? Is there one at all? Coming up with an alternative, which does not lead to more problems, that the administration could have considered is not easy. But neither is deciding between missing a day of work, which is paying for one to go to university, nor missing a day of class, which is the reason one is working in the first place.

The administration should have spent a little more time and taken the situation into more consideration before destroying the natural order of days. There are clearly problems with the present schedule which need to be addressed.

LET US KNOW WHAT YOU THINK:

Were you able to cope with the University's change in schedule?

Letters can be no longer than 150 words



Letters to the Editor can be e-mailed to beacon1@frontier.wilpaterson.edu, faxed to 973-720-2093, or mailed to The Beacon, SC 310 300 Pompton Road Wayne, NJ 07470 and can be no longer than 150 words, columns or op-ed articles should be no longer than 500 words. Letters must be signed. The editor reserves the right to edit for grammar and length. Manuscripts can not be returned. All submissions become the property of The Beacon.

The BEACON is looking for a PROOFREADER who knows AP style with aspirations of BECOMING copy Editor.

If INTERESTED COME TO STUDENT CENTER ROOM 310 and fill out an application.

Commentary

Funding of religious activities revisited

Gerald R. Brennan, Esq.

WITH campus activities now beginning to expand to weekends, a renewed focus has been turned to the question of a public university's funding of religious groups or activities.

The last but certainly not final word on this subject was issued by the United States Supreme Court in the 1995 case of *Rosenberger v. Rector and Visitors of the University of Virginia*.

In that case a student club called Wide Awake Productions (WAP) approved by the university submitted to the university a printing bill for its newspaper for payment out of student activities fees. Payment would have been made directly to the printer.

The newspaper entitled Wide Awake openly professed in its editorial creed to "offer a Christian perspective on both personal and community issues." The university refused to pay the printing bill. The leaders of WAP sued and after losing two lower court battles, convinced the U.S. Supreme court to hear the case.

The court found that in refusing to make payment of the printing bills the university was denying WAP freedom of speech. That denial was not justified by the Establishment clause of the first amendment which requires separation of church and state.

The court concluded that the university's policy of paying printing costs for student publications was neutral toward religion. The university paid the printing costs for a wide variety of student publications. The court reasoned that it should do the same for WAP even if the content was religious.

A case's power as precedent is determined partly by how easily it can be distinguished by its facts. Certain facts in *Rosenberger* were clearly crucial: 1) The university paid printing costs for a host of student publications. 2) Although the club's constitution was filed with the university, the club was acknowledged to be completely independent of the university, which was not responsible for the club. 3) No money was to be paid directly to WAP. Payments were to be made to an outside contractor.

Rosenberger's value as precedent might be mitigated because it was a 5 to 4 decision. The minority filed a vigorous dissent in which it accused the majority of approving "direct funding of core religious activities by an arm of the state."

So what does it all mean? The door has been opened, perhaps slightly for public colleges to pay for religious activities under certain circumstances. However, even the majority acknowledged that the establishment clause forbids the state from directly promoting or endorsing religion.

It's a fine line which public schools must walk in paying for or subsidizing religious activities or publications. Prior establishment clause cases spoke about the degree of government entanglement with religion. In *Rosenberger* the court duly noted that the university took great pains to disassociate itself from WAP and that no money was intended to go to WAP directly.

Rosenberger does give a public college guidelines with which to analyze requests to fund student religious activities. They are somewhat fuzzy guidelines but they are better than nothing.

Gerald R. Brennan, Esq. is a lawyer for the SGA at William Paterson University

The Insider

Music, Movies, Reviews, Interviews, and much more!

FORMER BEATLE★ DEAN CAMERON

By Tim Bornemann
Assitant Insider Editor

Originally I wanted to interview **Dean Cameron** because I was a huge fan of the movie *Ski School*. Also I religiously watched the TV Show he was in in the late 80's called *They Came From Outer Space*. However, once this interview took place, I unfortunately had to come to grips with the fact that Dean Cameron is nothing like the characters he's played on the screen.

Dean Cameron takes himself too seriously. He's a B Movie actor who thinks he's much more. This resulting interview was a major disappointment to me. While I Still love the movies he's been in, the actor is a person who's not exactly on my top ten list of favorite people.

What follows is the printable portion of this E mail interview.

What have you been in recently?

I'm not sure what your definition of recent is. You're stuck in the eighties, right? Hmmm... Well. Let's think here...

In the last three years... ER, Party of Five, Mad About You, Kicking and Screaming, Sleep With Me,

Highball, 211. I can't remember anything else. Oh yeah. A couple of plays here in L.A.

I've also been in Las Vegas for six months.

Do you miss the old days of 80's movies?

Not in the fucking least.

Do you feel that the time for that genre has come and gone?

Hmmm. As *Ski Stool* and *Miserable Beach* run constantly on cable, I can only say no. Unfortunately.

Does this upset you?

See above.

Are you mad George Clooney was chosen over you as Batman?

Yeah. I'm irate. That fuckhead better not show his weaselly little face anywhere near me. Asswipe.

In *Ski School*, why isn't the snow cold? naked girls and everone have no problem rolling around in it, what's the deal?

Well. Because there was no snow when we shot the first one. It was shot in March or April in Whistler B.C. It's a glacier, so there's year round skiing, but there's no snow anywhere else. It's insane.

Is *Ski School 3* ever coming out?

I think it's over. I'm sorry. Don't be sad.

Why were you the only person in

both 1 and 2?

Cuz chicks dig me.

Were there any cut scenes in *Ski School*?

Hmmm. Actually, it's all *added* scenes. You see:

They sold the title overseas and were in a rush to make the movie for

a fall release. Selling titles is something that happens frequently in the low budget world.

So, I got the script. I liked Dave a lot. Also, it was subversive in a weird way. People drink and have a good time, which was quite different from the preachy climate of movies in that era.

The story revolved around whatshisface. The new guy. Yeah, John-Knee.

It was a boring story. The director was an idiot. Stuart, Patrick and I were insane, so the producer and "writer" had us go up to their room and brainstorm scene ideas.

The ones you probably like in the movie are probably the ones we came

up with: Helium Theater, Who's Underwear?, Birth of the Lambada,

Godzera... I'm trying to remember other stuff... I can't.

I came up with this truly brilliant idea:

INSIDER GIG GUIDE

Thur 2/19 - Shift/Gen-Factor@The Saint, Asbury Park

Billy Joel@Spectrum, Philadelphia

Fri 2/20 - Toasters@The Chance, Poughkeepsie, NY

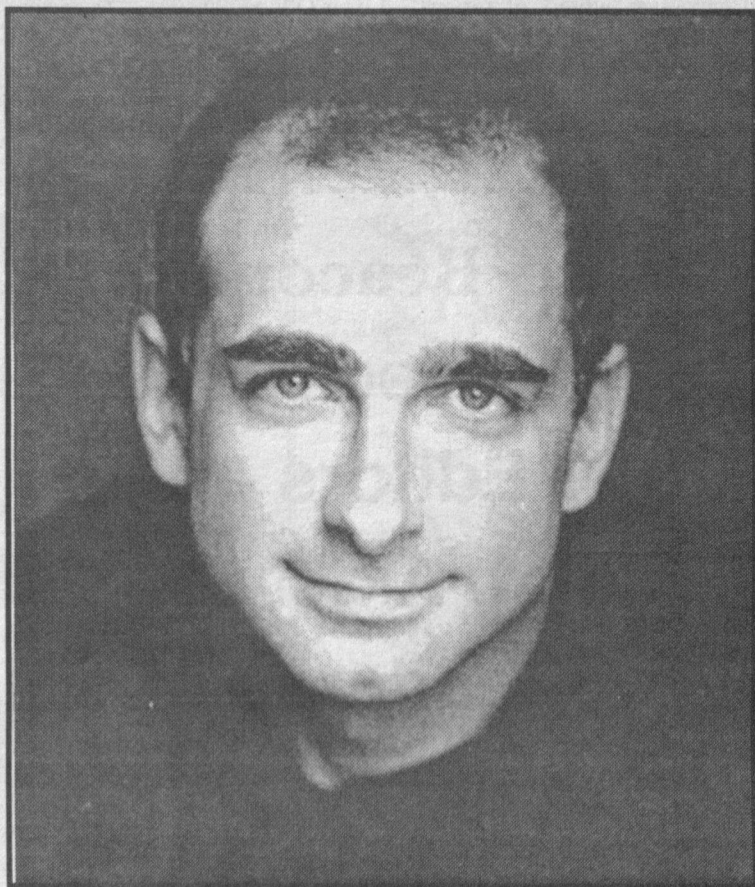
Letters to Cleo@The Saint, Asbury Park

Life of Agony@Birch Hill, Old Bridge

Sat 2/21 - Limp Bizkit/Sevendust/Clutch@Stone Pony,

Asbury Park

Sun 2/22 - Hepcat/The Slackers@Coney Island High, NYC



Start the movie off in the bridge of a spaceship. Dave is sitting at the helm. He's an old man. The ship is under attack. As the bridge crumbles we move closer and closer to Dave. Finally, Dave softly speaks. "I remember *Ski School*..."

And, BAM, we're into the

movie. Never mentioning it again. It would've been a truly brilliant moment in movie history. They didn't have the money. Ah well...

Anyway. They shot all of that shit. Wrote *another* script to

continued on page 9

In The Ropes

By Tim Bornemann
Assistant Insider Editor

After a somewhat shoddy last week, WCW came back with strong programs on both Monday Nitro and Thunder. Just two weeks away from Superbrawl, many of the controversial events that have been occurring over the weeks are finally coming to a head.

"Macho Man" Randy Savage has (finally) all but lost it. On Nitro he wrestled **Hulk Hogan**, and won. Of course the nWo came in and handed Savage a beat down. But at least it's almost official that Savage's nWo time is almost up. Hogan tried to patch up the situation on Thunder, but only succeeded in making matters worse. To top it all off Savage and Hogan will tag team together against **Sting** and "The Total Boredom," I mean "Package," **Lex Luger**. More than likely Hogan will probably just leave Savage to be double teamed by Sting and Luger.

The Steiner Brothers won the WCW Tag Team Belts on Nitro this week. Though they completely lacked any team work, the Steiners still managed to walk away with a victory. This sets up a rematch with **Scott Hall** and **Kevin Nash**, the **Outsiders**, at Superbrawl. In addition **Scott Steiner** also has a singles match against **Buff Bagwell**. I expect the Steiners to lose the belts and break up that night.

As a whole Super brawl is shaping up to be a great Pay Per View. So far the matches are: Sting vs Hogan, The Steiners vs The Outsiders, **Diamond**

Dallas Page vs **Chris Benoit**, **Lex Luger** vs **Randy Savage**, **Juventude Guerrero** vs **Chris Jericho**, **Scott Steiner** vs **Buff Bagwell**, **Larry Zbysko** vs **Louie Spicolli**, and **The British Bulldog** vs **Steve McMichael**. Aside from the Spicolli/Zbysko match, all of these have potential to be great. Hopefully they'll live up to it.

One of the more interesting matches will be for the Cruiserweight Belt. **Juventude Guerrero** will put his mask on the line against **Chris Jericho**. I for one think Jericho will win this match. I'm not sure if Juvi will continue to wrestle without his mask though. Probably he will, since he seems to be willing the void of WCW's high flying Luchadore left by an injured **Rey Mysterio Jr.** I think Jericho's next opponent should be **Dean Malenko**. He deserves a shot of becoming a four time Cruiserweight Champ.

Ric Flair also made his return to action this week on Thunder. Hopefully this will dispel some of the rumors the he may be leaving WCW. I don't see Flair leaving anytime soon. Hopefully **Bret Hart** will making his return soon as well. Supposedly he's the second highest paid wrestler in WCW. They are not getting their money's worth, that's for sure. Since he signed back in November or whenever it was he's wrestled once. Even Sting has been more active than Hart lately. We'll see if that changes.

Next week should be a great week to watch, culminating with Superbrawl. Stay tuned, it seems to keep getting better.

Jersey Seen

By Ed Erlenmeyer
Insider Editor

In attempt to further the New Jersey music scene, The Insider will periodically be running Jersey Seen, a local music column. If there is someone you know who is in a band that deserves attention, we want to hear from you! Bring up any tape, cd, 7inch and whatever info you have to The Beacon in the student center room 310. Ask for Ed and we'll see what we can do to hook you up!

Sole Pocket The EP

Fresh from their victory at MEISA's Battle of the Bands comes **Sole Pocket**'s six song ep. To say that the band probably deserved this win would be an understatement. This nine piece funk/jazz/hip hop outfit has more promise to them than **Honest Abe**. If **Jamiroquai** had an offspring, Sole Pocket would be the proud son. These guys will go far in the world of music if they stick to their guns so this reviewer suggests jumping on the bandwagon before it becomes trendy to do so. (Sole Pocket: c/o Ryan Goodine 61 Norwood St. Haledon, NJ 07508 or rrtg@frontier.wilpaterson.edu)

Groundswell Ghetto

If you like your punk rock fast with a touch of the West Coast added to it, then **Groundswell** may be your bag. This four piece plays their stuff faster than the speed of light. There is a bit of **Decendents** added to the mix to give them a sound not entirely like every punk band out there. One of the only drawbacks to this two song demo tape is that there is no information in it regarding the band, there's not even the names of the songs printed anywhere in the liner notes. The production is good though and for the few minutes you get listening to the tape, it definitely gets the blood pumping. (Groundswell: 732-786-0754 ask for Mike)

Music professors receive ASCAP awards

Hugh Aitken, professor emeritus of music at William Paterson University, and John Link and Reynold Weidenaar, both members of the WPU music faculty, have been named 1997-1998 award recipients by the American Society of Composers, Authors and Publishers (ASCAP).

The awards, designed to assist and encourage writers of serious work, are based upon the unique prestige value of each writer's catalog of original compositions, as well as recent performances of

those works.

Aitken is the author of more than 80 musical works, including two operas and an oratorio. He has been commissioned by the New York Chamber Symphony, the Naumburg Foundation and the Coolidge Foundation, as well as such prominent musicians as conductor Gerard Schwartz, violinist Elmar Oliveria, pianist Emmanuel Ax and cellist Yo-Yo Ma.

In addition, his "Pastiche for Piccolo and Piano" was one of 17 works chosen from among 250 for

inclusion in the National Flute Association's "Anthology of American Flute Music." Another composition, "One Music as Before" for chorus and organ, was awarded first prize in an international competition sponsored by the Florilege Vocal de Tours in France, and his chamber opera, "Fables," was featured during the 1992 Aspen Music Festival.

A graduate of The Juilliard School with bachelor's and master's degrees in music, Aitken joined the WPU faculty as a professor of music in 1970 until he retired in 1996, following 10 years as a teacher at Juilliard.

In addition to being an ASCAP recipient since 1965, Aitken has been honored by the American Academy and Institute of Arts and Letters for composition. He is a resident of Oakland.

Link, an assistant professor of music at WPU since 1994, has composed numerous orchestral, chamber, vocal, solo and electronic works. His compositions include "Eichatzeltanz," composed by the Lincoln Center Double Bass Quartet in New York City; "The Potato Picker," written for the Central Ohio Composers Alliance in Columbus, Ohio; and "Down by the Station, Early in the Morning," commissioned by the Music Now! Festival in Lincoln, Nebraska.

A specialist in the music of

Elliot Carter, Link has presented papers on Carter's compositions at the Society for Music Theory's annual meeting and the biennial Symposium of Research in Music Theory at the University of Indiana.

A graduate of the City University of New York, Link holds a doctorate in composition and a master's degree from Ohio State University. He is a member of the National Association of Composers, College Music Society, the Society for Music Theory and ASCAP. He has been an ASCAP award recipient since 1993. Link is a resident of Hawthorne.

Weidenaar joined the WPU faculty as an assistant professor of communication in 1993. An expert in video and electronic music, he has produced several concert videos where he combines projected video with music on tape and live accompaniment.

His first concert video, produced in 1982, "Love of Line, of Light and Shadow: The Brooklyn Bridge," for clarinet, color video and electronic sounds, was grand prize winner at the Tokyo Video Festival.

Since "Love of Line," Weidenaar has produced several concert videos which have received more than 400 live performances and more than 4000 screenings and broadcasts in their

tape versions. The videos have won numerous awards including Director's Choice at the Sinking Creek Film Celebration, top prize in the National Video Competition and a CINE Golden Eagle.

Weidenaar is the author of the book, "Magic Music from the Telharmonium," a definitive account of the first comprehensive music synthesizer.

A graduate of the Cleveland Institute of Music, Weidenaar began working with electronic music in 1965. He holds a master's degree and a doctorate from New York University and has been awarded Fulbright and Guggenheim Fellowships in video and a National Endowment for the Arts Composer Fellowship. Weidenaar is a resident of New York.

The panel of judges for this year's awards included Harold Best, dean of the Wheaton Conservatory of Music; JoAnn Falletta, music director of the Virginia Symphony and Women's Philharmonic Orchestras; Tim Page, author and classical music critic for the Washington Post; H. Robert Reynolds, director of bands and instrumental studies at the University of Michigan; and Fred Sherry, world-renowned cellist and member of the Chamber Music Society of Lincoln Center.

The Beacon is currently looking for:

• **Copy Editors** - must know AP style

• **Proofreaders** - must know AP style and have good spelling skills

• **Writers**

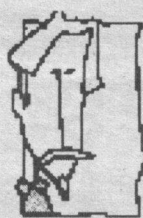
and anyone else interested in gaining newspaper experience.

Call the office at **x2576**

or come up to **Student Center 310** and fill out an application.

Work for the Beacon!

Essence / English Club



Coffee House

Tuesday, February 17

Billy Pat's

7 p.m. - 10 p.m.

You'd better be there!



There's only TWO this semester!

Free food and coffee

Funded by the SGA

Call Now

1 (800)

KAP-TEST

Call Now

1 (800)

KAP-TEST

Call Now

1 (800)

KAP-TEST

Call Now

1 (800)

KAP-TEST

How Would You Score?

LSAT

GMAT

MCAT*

CPA

Take a Free Test Drive and find out!

Exams given on Saturday, February 21

Location: Science 200
MCAT & LSAT 2pm
CPA & GMAT 10am

Call today to reserve your seat!

KAPLAN

1-800-KAP-TEST

www.kaplan.com

*Course names are registered trademarks of their respective owners.

Call Now

1 (800)

KAP-TEST

Call Now

1 (800)

KAP-TEST

Call Now

1 (800)

KAP-TEST

Call Now

1 (800)

KAP-TEST

★★★★★

**JERSEY
SPORTS
CAFE**

★★★★★

125 Park Ave
East Rutherford, NJ

Call for Information
201-933-3308

RESTAURANT ♦ SPORTS BAR ♦ NIGHTCLUB

JUST RENOVATED!

≈ NEW STAGE ≈
≈ NEW BAR ≈
≈ NEW DANCE FLOOR ≈
≈ NEW LOOK ≈
≈ NEW EVERYTHING! ≈

∞ ∞ ∞ ∞ ∞ ∞ ∞ ∞ ∞ ∞ ∞ ∞

• NEW ATMOSPHERE • NEW LIGHTING EXPERIENCE
• NEW SOUND EXPERIENCE

THURSDAY, FEBRUARY 19

Speed

\$1⁰⁰ DOMESTIC MUGS

FRIDAY, FEBRUARY 20

**Big ORANGE
CONE**

\$1⁰⁰ DOMESTIC MUGS

SATURDAY, FEBRUARY 21

**"B" STREET
BAND**

\$1⁰⁰ DOMESTIC MUGS

Pioneer Players in conjunction with AΨΩ

PRESENT

DIRECTED BY: SHANE TAYLOR
STAGE MANAGED BY: ELIZABETH LEON



Funded By:



FEATURING

MICHAEL DAILY
RENEE POWELL
PRECIOUS GEM WHEELER
SHERRY DOCK
AKMED TAYLOR-KAMARA

SHERI LOWERY
GLADSTONE
MYRA McDONALD
RASHAD DAVIS
SUKRAT ALI

PERFORMANCES:

FEB. 25- 28 8PM FEB. 26 12:30PM (MATINEE) MAR. 1 6PM
LOCATION: HUNZIKER BLACK BOX THEATER
ADMISSION: \$5 STUDENTS W/D RSVP: 2514

WILLIAM PATERSON UNIVERSITY College of the Arts & Communication
Performing Arts Resource Management Unit

Present
Tense

by
John McNamara



Probe delightfully into the terrors and uncertainties of teenage romance - or the lack of it!

Featuring:

Virginia Kamenitzer, Mike Lieberman,
James Palmer, Alyce Janel Rosolen,
Christie Lynn Sobota, Jeffrey Wickersty

Two
Off-Broadway
Comedy Hits!
directed by Philip Cioffari



Using the world of television game shows, this fast paced piece satirically examines and dissects the shortcomings of modern society!

Featuring:

Tina K. Glowacki, James Palmer, Christopher A. Paseka,
Christie Lynn Sobota, Bobby Timony, Mary F. Tiritilli,
Michael K. Wnoroski

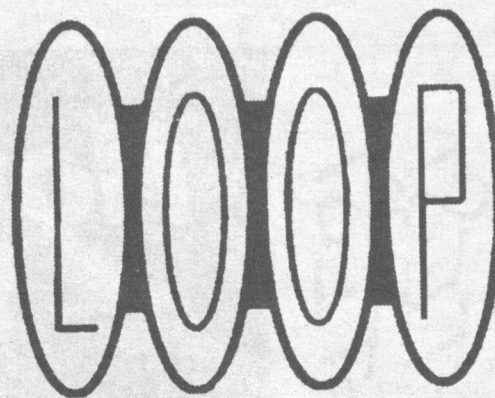
February 18-22, 1998

Wed.-Sat. @ 8:00pm/Thurs. also @ 3:30pm/Sun. @ 6:00pm

Hunziker Black Box Theatre

Tickets: \$6.00/\$5.00- Students, William Paterson Community & Senior Citizens

For Information & Tickets Call:
(973) 720-2371

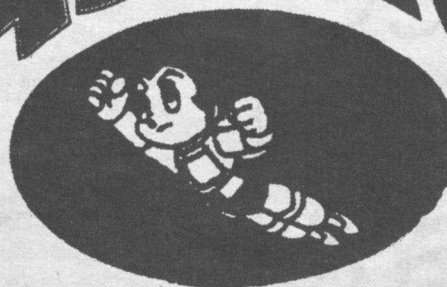


SUPERSONIC SOUND

Lounge

SUBTERRANEAN GROOVES

ASTRO



LADIES FREE ADMISSION

50 DRAFTS
\$2.00 SOL
\$2.00 JAGR

**EVERY THURSDAY
FREE LIVE SHOWS
& \$2.00 IMPORT PINTS**

Thursday, February 19th

**TEEN BEATERS
DRYWATER
PUGGLE**

Thursday, February 26th

**MAS RED
STAB CITY**

Thursday, March 5th

A.K.P

Check us out on the web
www.looplounge.com

**FRIDAYS & SATURDAYS
FREE ADMISSION
\$1.00 Bar Drinks & Coors Drafts
Until Midnight**

D.J.'s Play The Smart Dance Mix

Open Wed.- Sat. Till 3 AM

Directions from campus: Rt. 46 East to Rt. 3 East to Passaic Ave.
Nutley/Passaic exit, go to right of ramp, go three traffic lights & make
a left, (Van Houten Ave.) Go to first traffic light, make a right onto
Broadway. Loop is on the right.

373 BROADWAY PASSAIC PARK, NJ 973-365-0807

Under the Microscope

Letters to Cleo Go! (revolution)

Go!, the latest attempt by the female fronted band Letters to Cleo comes to you fresh off of Revolution. The band seems to be right where they were through the past singing quirky pop rock. Since the market has been flooded by the exact same thing for years now it becomes hard to see any innovation in this album. Songs like "find you dead" and "Veda Very Shining" fall right into the pit of women pop with bands like Veruca Salt, and Mary me Jane.

Now for the twist of this review. The album isn't really bad at all. For being boring rehashed material, Letters to Cleo finds a way to put it all together with some songs that are just very catchy. "Anchor", "I got time", and "Because of you" form a link in the album which makes it very

bearable. Very unexplainable, but the album does have direction. So, if you are into the sound, Cleo lays it all out on the table with this one. (AG)

Pearl Jam Yield (Epic)

Critics have called Pearl Jam's latest release Yield, their best since Ten. This is, by all means, the truth. Coming off of No Code's sluggish sales, Yield brings Eddie Vedder and the boys back to what being a big name rock 'n roll band is all about, rock 'n roll.

There doesn't seem to be a mentality within the band that they are going to change the world. Yield is a straight up rock album filled with all the good stuff that brought the band into national attention during the almighty grunge movement of the early 90's.

The disc starts off with "The

Brain of J." which has an upbeat feel to it and catches the listener by surprise due to its hard guitar sound and full on energy.

From there the album is a roller coaster of feelings ranging from squealing barrage of sound on "Do the Evolution" to the mystical, almost magical wave of the first single, "Given to Fly," easily the record's best track.

Guitarists Mike McCready and Stone Gossard once again prove to

the world that their dueling axe-work is among the best in the business and drummer Jack Irons finally finds his place as what was Pearl Jam's missing link up until the present.

As far as lyrics go, Vedder has come into his own with words like "I wish I was a messenger and all the news was good, I wish I was the full moon shining off your Camaro's hood." This is from another gem titled "Wishlist."

As the song oddly fades out Vedder finishes with "I wish...I wish...I guess it never stops."

If the fans haven't already written them off as the weirdos of the music industry, Yield should bring Pearl Jam back into the hearts of the millions of people that were the cause of their rise to fame back in the days of "Alive" and "Jeremy."

(EE)

DEAN CAMERON ★★ FORMER BEATLE

from page 5

piece it all together and then about six months later, we shot some more stuff here in L.A. to try and make it all make sense. Nutty, eh?

They cut a shot where Eric Stoltz is at the first party, dressed in my wardrobe from Summer School.

What was it like filming it? any particularly memorable moments or pranks? or bloopers?

I think the entire movie was a prank and blooper, don't you? Explain the popularity of the spice girls.

I can't. It's a secret. Maybe because everyone wants to fuck them and fuck them hard.

Why did Dave become such a faithful 1 woman guy in Ski School 2?

Dunno. I think that should've been 1 and 1 should've been 2. Go figure.

How does doing a movie compare to doing a the tv series They Came From Outerspace?

Depends on the movie and tv series. Every job is different. I've only

done one long run of a tv show. It was sorta grueling. The money rocks, though. It just rocks.

How long Did that series run?

20 episodes; 20 weeks.

What was the name of the planet they were from?

Crouton.

Any plans for it to rerun?

Dunno.

Do you keep in touch with Stuart Franktin at all?

Yes. He has two kids though, so they're busy enough without me

around.

When the Beatles broke up, how did your solo career go?

It was fine for a while, then I realized that I was basically a novelty act, so I started this acting thing.

Do you have problems with fans when you go grocery shopping?

Yes.

What did you think of the Star Wars Special Editions?

Really dumb politics. I only saw Star Wars, and I thought the recutting of the scene where Han Solo shoots second was ridiculous.

Just nutty.

And finally, when will you be receiving the Lifetime Achievement award from the Academy?

Tomorrow.

LAST MINUTE SPECIAL!

SPRING BREAK '98!

BAHAMAS!

LAST MINUTE SPECIAL!

From only

\$349!

Per person!

COCKTAILS & DREAMS

THE ZOO

INCLUDES 21 HOURS OF FREE DRINKS!

ALL SPRING BREAK TRIPS INCLUDE:

- Round trip flight
- Round trip transfers from airport to hotel
- 7 nights hotel accommodations
- Provisional \$200 on location
- On-site to serve you while on your vacation
- Welcome orientation and spring break briefing upon your arrival
- FREE Class Travel VIP wristband provided

CLASS Travel

"I IN FUN!"

Call for more information today!

1-800-838-6411

930 Commonwealth Ave., South, Boston, MA 02215
Phone 617-232-8080 • Fax 617-232-5801

FIND 15 FRIENDS AND YOU'LL TRAVEL FREE!

Applies to new bookings only. Expires 2/15/98. Restrictions apply.

CANCUN SPRING BREAK '98 BAHAMAS

5 FREE BREAKFASTS,

5 FREE DINNERS,

21 HOURS FREE DRINKS!

LIMITED TIME SECOND SEMESTER SPECIAL

DRINK FREE!

21 HOURS OF FREE DRINKS

ALL TRIPS INCLUDE:

- ▼ Round Trip Air
- ▼ 7 Nights Accommodations
- ▼ Round Trip Airport / Hotel Transfers
- ▼ Hotel Taxes
- ▼ Bellman and Maid Gratuities
- ▼ Wristband for Discounts & FREE Cover to the Hottest Clubs & Restaurants

- ▼ Daily Hospitality & Activity Desk
- ▼ Spring Break On-Site Staff
- ▼ Exclusive Beach and Pool Activities
- ▼ 21 Hours of FREE Beverages
- ▼ 5 Breakfasts, 5 Dinners (CANCUN ONLY)

Industry Leader in High Quality, Top Rated Student Travel Programs.
Excursion Protection Accounts, Fully Licensed, Insured and Bonded.

* Subject to terms and conditions of the Tour Participant Agreement. Tour Operator is SunCoast Vacations Inc.

USA SPRING BREAK TRAVEL

1-888-SPRING BREAK

CAFÉ ABYSS

at Billy Pat's

A Night of Music and Fun

Open Mic Night after Performance

FEbruary 20

9 P.M.

WPUNJ ID

\$1 COVER AT DOOR

featuring

Tom Kropp & Bobby Syvarth

Combo

Brought to you by

COLGAF

and

Light Refreshments will be served

Funded By

STUDENT GOVERNMENT ASSOCIATION

William Paterson University of New Jersey

PIONEER SPORTS

MICHAEL S. LACLAIR -- EDITOR (973)720-2576 E-MAIL- BEACON1@FRONTIER.WILPATERSON.EDU

Lady pioneer's looking to win it all

By Jason Biziak
Sports Contributor

The 1998 NCAA Women's basketball National Championship tournament is approaching in three weeks. You can count on William Paterson University head coach **Erin Shaughnessy** and her ninth ranked **Pioneers** on not only being there, but also making a run at the coveted national crown.

Head coach **Erin Schaughnessy** has been affiliated with the WPU women's basketball program for ten years now. From 1986-1990 she was a player for the then William Paterson College **Pioneers**. The past six seasons have seen her pace the sidelines as a coach in two capacities. In her tenure as a coach she has served as an assistant coach for two years and as a head coach for four.

In her six year tenure as a coach at WPU, teams under **Shaughnessy** have enjoyed much success. They have been invited to the NCAA tournament five out of the past six seasons. Last years team made it to the Sweet Sixteen only to suffer a disappointing 84-74 loss to eventual national champion NYU.

The team looks to bounce back from last years loss and use it as motivation heading into this years

tournament. WPU is one of the heavy favorites to win it all. This years team is currently first place in the NJAC(14-0) and have a dominating 19-1 overall record. Their last lost came from Elizabethtown College 83-73 in the first game of the year.

The team is looking to make some serious noise in this years

Shaughnessy lost only one starter, in **Bridget Brennanto** graduation from last years squad. **Brennan** led the team in all areas. She averaged 14.4 points per game, had 217 rebounds, 90 assists, 27 blocks, and 60 steals. She also had 1132 career points. "We expect to make it to the final four this season, and if we play our game, sure we can

The type of game that this team plays involves a lot of physical and mental toughness. Half court sets and a swarming defense seem to prevail over contemporary basketball methods. Too many teams in contemporary basketball favor the west coast style of running and gunning over a very effective **Shaughnessy** style that emphasizes

worry about a premature burn out due to the wear and tear of a long season.

Three players on **Shaughnessy's** squad will soon be lost to graduation. They are forward **Ammee Schubert**, guard **Kathy Sinram**, and guard **Stephan Zdanowicz**. Most notably will be **Kathy Sinram**, who **Shaughnessy** described as her "best defensive player." **Sinram** is assigned the seemingly unyielding task of containing the oppositions most prolific scorer to help give her team the best possible chance of winning every time they step onto the court. Recruiting this off season will be the facet that **Shaughnessy** hopes to turn to in search of her next dominating defensive guru.

This up and coming recruiting period seems to have the making of a favorable one for the pioneers for two reasons. The first being, even though WPU is a Division III school and they can not offer scholarships, their reputation of being a program that knows how to win will definitely have a positive connotation to it. Secondly, whomever the pioneers lure in, will have the opportunity to learn the **Shaughnessy** basketball philosophy. With four returning starters there is no need for someone to step in right away. This is shaping up to be what looks like a potentially great opportunity to solidify the team for years to come.



photo by Sylvana Meneses / The Beacon

Women's head basketball coach, **Erin Shaughnessy**, leads the team in a huddle in a game last year. The lady **Pioneers** have a current record of 20-1 overall and 20-0 in the New Jersey Athletic Association.

tournament with the bulk of last year's squad still intact.

win it all," stated enthusiastic third year player, **Stacey Moscufo**.

playing tough defense and making every offensive possession count.

With the regular season coming to an end, and the focus of the team turning to the tournament, **Shaughnessy's** style seems to have proved beneficial to her team. With the half court style of offense, the players do not have to

Men's basketball notes from the office of Joe Martinelli

The Pioneer men's basketball team heads into the final three games of the season sporting a 13-8 record overall, 9-6 in the New Jersey Athletic Conference. William Paterson has won five of their last seven games, and are currently sitting fourth in the NJAC. The top four teams qualify for the NJAC basketball playoffs.

Junior guard **Mubby Swain** (Newark) is second on the team in scoring with 286 points for an average of 15.1 points per game.

Senior forward **Justin Frederick** (Jersey City) had 15

points, 12 rebounds and 2 assists in a win against Jersey City State College on Wednesday. He is tops on the team in both scoring (15.4 ppg) and rebounding 177 (8.9 rpg). **Frederick** is shooting a scorching 56.9 from the floor and 74.4 percent from the charity stripe.

Junior forward **David Coleman** (Irvington) had 11 points and 16 rebounds in Wednesday's game against Jersey City State College. He is third on the team in scoring with 278 points for an average of 13.2 points per game. **Coleman**

has pulled down 155 boards for an average of 7.4 rebounds per game.

Arik Cotten (Morristown) has racked up a team-leading 61 assists in just 12 games played. **Cotten** is chipping in 11.6 points per game, and is shooting 86.1 percent from the charity stripe.

Freshman guard **Kevin Flemming** led the team in scoring with 17 points in a 72-66 win over state college of New Jersey on Wednesday. **Flemming** averages 4.9 points per game.

come off the bench to score 184 points for an average of 8.8 points per game. **SHe** is shooting 35.5 percent from three point range (39 of 110), and 79.2 percent from the charity stripe.

Junior guard **Stephanie Arrigo** (Flemington) has racked up a team high 259 points for an average of 12.3 points per game. She is just 27 points shy of joining the elusive Pioneer 1,000 career points scored club. **Arrigo** has amassed a career high 93 assists, surpassing her previous career best of 71 set last season.

Sophomore guard **Meg Renna** (West Milford) is second on the

team in scoring with 230 points for an average of 11 points per game. **Renna** is shooting 47.6 percent from the floor, while sporting a team best 87 percent success rate from the charity stripe.

Junior guard **Dana Feltz** (Sayreville) is averaging 10.4 points and 6.5 rebounds per game. She is tops on the team in both steals with 60 and blocks with 16.

Senior guard **Kathy Sinram** (Nesconset, N.Y.) is contributing 7.4 points and 3 rebounds per game. **Sinram**, a defensive wizard, is second on the team in steals with 53.

Women's basketball notes from the office of Joe Martinelli

The women's basketball team extended their winning streak to 20 when they defeated Jersey City State College 64-53 on Wednesday, February 11. The **Pioneers** are currently sporting a 20-1 record overall, and 15-0 in the New Jersey Athletic Conference.

Sophomore forward **Wendy Kane** (West Milford) is leading the team in rebounding with 152 boards for an average of seven rebounds per game. She is averaging 10.1 points per game, and is shooting a team high 53 percent from the floor.

Junior guard **Sharon Rocks** has

This Week In Sports

Tuesday February 17	
Women's basketball at Rowan State College	6:00 PM
Men's basketball at Rowan State College	8:00 PM
Friday February 20	
Women's swimming- Met Championships	TBA
Men's Swimming- Met Championships	TBA
Saturday February 21	
Women's basketball home vs. Richard Stockton	2:00 PM
Men's basketball home vs. Richard Stockton	4:00 PM
Men's swimming- Met Championships	TBA
Women's swimming- Met Championships	TBA
Sunday February 22	
Indoor track- Princeton Invitational- Princeton	TBA
Men's swimming--Met Championships	TBA
Women's swimming- Met Championships	TBA

Women's basketball scores	Men's basketball scores
WPU 74 College of Staten Island 52	WPU 56 Jersey City State College 31
WPU 64 Jersey City State College 53	
Editors note: The sports department needs score and statistics from swimming and the indoor track coach. The sports desk would like to cover all sports.	

Beacon Classifieds

OUR RATES

To run 20 words for one issue is \$6.50, 21-35 words \$7.50, each additional 10 words \$1.00

HOW TO PAY

All classified ads must be paid in advance, unless you have an account with the paper.

DEADLINES

Classified ads must be placed by 12:00 P.M., Friday before publication.

SEND ADS TO:

The Beacon
300 Pompton Rd, SC310
Wayne, NJ 07470

ATTN: Classifieds
checks or money orders
payable to:
THE BEACON

Help Wanted: medical receptionist. Will train. Monday thru Friday 1-5 p.m. \$9 per hour. Call Maureen at 973-616-0944. No experience necessary.

Domino's Pizza Delivery Drivers P/T. \$8-11/hr with tips. Must have good driving record and own vehicle with insurance. All hours available. Apply @ 1109 State Route 23 in Wayne or Call 694-0042 for info.

Models. Women 18+ for outdoor test shoot by hobbyist photographer. Pay or will exchange pictures. No experience necessary. (973) 365-4054. Only reliable need

Think you're pregnant?
Partner pressuring you?
Let's talk it over...
we can help.

Our free & confidential services include:

- Pregnancy Testing
- Counseling
- Post-Abortion Support



Friendship
Pregnancy
Centers

(973) 538-0967
24-hour Hotline

Morristown • Wayne
Jersey City

apply.

Spring Break "98" Great rates on USAirways to Cancun! Stay at the Oasis! Space left in Fla., San Juan, and Jamaica, too! Don't Wait! Selling out fast! 1-800-700-0790 www.vagabond-tours.com

FREE T-SHIRT +\$1000

Credit Card fundraisers for fraternities, sororities & groups. Any campus organization can raise up to \$1000 by earning a whopping \$5.00/VISA application. Call 1-800-932-0528 ext 65. Qualified callers receive **FREE T-SHIRT.**

Baby-sitter Wanted
Occasional Saturday or Sunday nights for 4 year-old girl. call 694-0119 after four and ask for Pat.

1986 Toyota Camry 4-DR, Auto, A/C, Rear defog, AM/FM /cassette, 107K miles. Excellent condition, must see, \$2,700 Tel (973) 838-0429

SONG WRITERS & LYRICISTS WANTED!

"SONG CONNECTION"

The best way to
your next hit.

1-800-789-SONG
818-348-0494

Beacon Personals

D - P h i - E Associates... Congratulations Tau Class. Make Us Proud! It will all be worth it! Love the Sisters of Delta Phi Epsilon.

Congratulations & Welcome to the Pledge sisters of Theta Phi Alpha - Mu Class!

Good Job to Nicole Zajac & Nicole Arace of Beta Zeta Phi. You did great. We Love You! Love your Angel sisters.

Congratulations to the Associates of the Beta Zeta Phi "Nu" class. Love the Angels!

Sex Wins! Sex Raffles out-sold Chocolate Raffles two to one in USC Valentine's Day

Raffle!

Dawn Marsico - congratulations on winning the United Science Club Valentine's Day Sex Basket. Enjoy it Safely!

Ira Lippmann - Congratulations on winning the United Science Club Valentine's Day Chocolate Basket. Indulge in good health!

The United Science Club - (United Sex Club??) would like to thank everyone who participated in the sex and chocolate raffle.

To Allison - I'm sorry for calling you a name you do not like, or making hasty generalizations. Brandon

To Mr. Ski - #1 BEEKIN groupie.....Love, Lanjen

WANTED

**Responsible students
to market/manage
Citibank promotions
on campus.**
Make your own
hours.

No travel.
Earn 400+/wk.
Call
800-932-0528
ext. 117

ATTENTION: EDUCATION, PSYCHOLOGY, SOCIOLOGY MAJORS

Gain valuable resume
and field experience
and make a difference
in a child's life.

Call for an interview
for summer positions
at

**RAMAPO
COUNTRY
DAY CAMP**

914-356-6440
Counselor/Specialty
summer positions

Operations Assistant

Immediate Job
Opportunities Available
Monday Through
Saturday Shifts
Flexible Hours
Make Your Own
Schedule
Earn While You Learn

Apply In Person:

IPC
1 Madison Street
Building F
East Rutherford

**BOB ROB
WEIR WASSERMAN**

**ON SALE
THIS SAT 9AM!**



**ONLY
AREA
APPEARANCE!**

**MARCH 25
7:30 PM**

**JAY LANE MATTHEW KELLY
DAVE ELLIS JEFF CHIMENTI**

**WILLIAM PATERSON UNIVERSITY
REC CENTER
WAYNE NJ**

TIX AT THE REC CENTER BOX OFFICE,
THRU ALL **TICKETMASTER** OUTLETS &
CHARGE-BY-PHONE (201) 507-8900 • (609) 520-8383
EVENT DATE & TIME SUBJECT TO CHANGE.

PRODUCED BY METROPOLITAN ENTERTAINMENT GROUP
AN OGDEN ENTERTAINMENT COMPANY
VISIT US AT: WWW.CONCERTHOTLINE.COM

THE PCA WANTS YOU! (IF YOU ARE READY FOR LEADERSHIP)

TEACHING ASSISTANT & DORM COUNSELOR SUMMER POSITIONS AVAILABLE!

The William Paterson University Pre-College Academy invites applications and nominations for Teaching Assistant and Dorm Counselor positions for its 1998 Summer Program. The Pre-College Academy is a five-week residential academic enrichment program for urban students in grades 9-12 from Northern New Jersey. The Pre-College Academy will be in session from June 29 to July 31, 1998.

A listing of eligibility requirements and responsibilities can be obtained from the Office Minority Education (Morrison Hall). Submit letters of interest, resumés and references (2) by **April 17, 1998**, to:

The WPUNJ Pre-College Academy
William Paterson College
Office of Minority Education
300 Pompton Road
Wayne, NJ 07470

THE P.A.S.S. PROGRAM

The "Pathways to Academic Success in the Sciences" Program is proud to announce the start of open competition for P.A.S.S. student mentor/tutor appointments.

Q. Who can become a P.A.S.S. student mentor/tutor?

A. Any student:

- * Interested in a career in science, math or technology as evidenced by a declaration of major
- * Ready to assist entering students with the transition from high school to college
- * Interested in networking and mentoring relationships with faculty and staff
- * Interested in research and internship opportunities
- * Willing to spend the summer learning your discipline
- * Committed to academic success

How do you apply?

1. Draft a letter of interest
2. Develop a resume
3. Write an essay outlining your career goals

The application should be sent to the Office of Minority Education by **April 17, 1998**.

For additional details contact:

Lester J. McKee, Director, P.A.S.S. Program
Morrison Hall, Ext. 3103

or

Dr. Danielle Desroches, P.A.S.S. Program Coordinator
College of Science and Health, Ext. 2329

THE TUTORIAL ASSISTANCE PROGRAM (T.A.P.)

Mid-term Exams are Coming!
Mid-term Exams are Coming!

**WE NEED TUTORS ...
WE NEED "STUDY BUDDIES" ...
WE NEED STUDENT MENTORS ...
WE NEED EXAM PREP COACHES ...
WE NEED YOU!**

If you really want to make a difference here,
help us.

Become a T.A.P. tutor!

T.A.P. tutors earn \$7.50 per hour. Do You?

For details contact:
the Office of Minority Education
Morrison Hall

**NEED A PLACE TO STUDY WHERE
YOU CAN ACTUALLY BE FREE
TO TALK AND WORK TOGETHER?**

Then visit the Learning Centers in
the Office of Minority Education

or

the P.A.S.S. Program Office (Room S349)
SAFE PLACES IN A STRESSFUL WORLD!!

**There's a NEW energy in O.M.E.
(The Office of Minority Education)**

Come join the team and
find your way to success!
O.M.E.

We're making "things" happen, and
we're "working" for YOU.