

shining on the college community for more than 55 years

# The Beacon

September 20, 1993 • WILLIAM PATERSON COLLEGE

## Faculty appointments fail to reflect diversity

By Pamela Johnson  
EDITOR IN CHIEF

Despite the college's acknowledged commitment to hiring diverse faculty, 84 percent of those appointed are men.

According to Affirmative Action Officer Robie Cagnina, "We may have a search where not that many women apply."

Out of 19 tenure track faculty members appointed, three are

women to apply," said Dye. "I am very disappointed that there are not more women hired."

Some WPC students questioned what appears to be a poor ratio of men to women.

Patricia Sosa, 23, junior political science major stated, "I think there should be an equal number of males and females in the faculty. I'm angry. It's the 90's and it shouldn't be like that. We have to do something about

"I am not aware of the total statistics" said Speert, "I have made a statement that our appointments were not diverse and it is necessary for us to be more diverse... we have to be much more inviting to these classes."

Speert was alluding to remarks he reportedly made at the Sept. 2 all faculty meeting in Science Hall where the new faculty was introduced.

Speert also mentioned that when he has had direct influence he has made an effort to appoint females and minorities. He pointed out that three-out-of-four deans are female. Speert said that the college intends to recruit people from other institutions and organizations with high numbers of minorities and women.

Sue MacNamara, assistant vice president of academic affairs said she supports the Provost's perspectives on the fall 1993 appointments.

"As I understand it, we have continued work to do. Diversity remains a high priority for all of us. I think the Provost is working with her immediate staff on a series of strategies. We need to think about diversity from a variety of perspectives," MacNamara said.

Hope Stevenson, sophomore music education major believes, "there should be more women. That's not fair, it's discriminatory against women, people should have an opportunity."

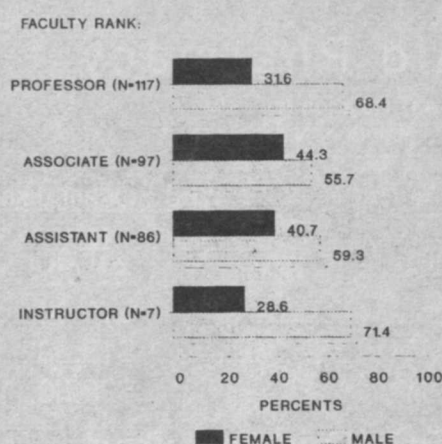
that."

Seth Diamond, psychology major believes that there's "a lot more females and minorities who are capable" of assuming faculty positions.

WPC President Arnold Speert reasoned, "If you look at national statistics, we made some gain in hiring women in a certain period of time."

Provost Eleanor Smith stated that she is "going to work that out with the deans so we can reach out to women, African American and Latino faculty."

SEX OF FULL-TIME FACULTY BY RANK, FALL 1992



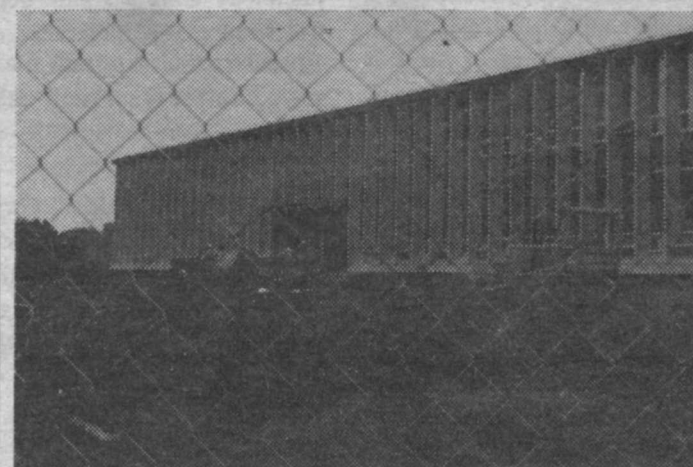
SOURCE: WPC FACTBOOK, 1992

female and two are minority.

"All minority and protected classes do not possess a Ph.D. Some are more prone to go into some areas and not others," said Cagnina.

Local President of the American Federation of Teachers Linda Dye expressed disappointment with this year's appointments.

"In this time when jobs are so hard to come by it is inconceivable that there would not be an adequate number of



Construction continues at the library.

## State budget cuts library hours

By John F. Gillick  
ASST. NEWS EDITOR

In addition to the ongoing construction of Sarah Byrd Askew Library, and the relocations associated with it, students may be further inconvenienced by a recent cut in the library's operating hours. These have been deemed necessary as "a result of budget reductions across the board," according to Tim Fanning, vice president of administration and finance.

these salary dollars over which we have any latitude at all. When we have to absorb a cut we can only do it in areas of adjunct employment and part-time employment."

"What must be understood is that the hours that have been selected to be cut have been documented by the library staff as receiving the least use," continues MacNamara.

For the Fall Semester 1993, the hours for the Library Building and Periodicals (on the sec-

## If we don't have the staff, we can't stay open - Levy

"The hours were cut because the budget for part-time staff was cut. If we don't have the staff to man our desks, we can't stay open," said Norma Levy, assistant director of Public Services at the library. "I know it is painful for students but with the cuts, we can't keep the library open. It is as simple as that."

Assistant Vice President of Academic Affairs Susan MacNamara explains, "We have been asking all areas to look at

ond Floor in Wayne Hall) are as follows: Mon.-Thurs. 12 a.m. to 6p.m., Fri. 7:45 a.m. to 4:30 p.m., Sat. 10 a.m. to 5 p.m., and Sun. 12 a.m. to 6 p.m. The hours for the Audio-visual department (located in Hobart Hall) will remain the same as in the past.

"The library is not being singled out. It is carrying its share of the cuts we have all endured. The whole campus is experiencing the consequence of a long history of underfunding," concludes MacNamara.



## Campus Events

### Monday

**The Beacon** - has its weekly staff meeting at 3:30 p.m. in SC 310. Story assignments for news, sports or entertainment are given to writers. We need you!

### Tuesday

**Pioneer Hockey Team** - Sept. 21, 6:30 SC Cafeteria. Players meeting - first practice Sept. 28. Call Donna De Lorenzo 201-728-2026

**Christian Fellowship** - PA Lounge, 5:30 p.m. Can a homosexual be a Christian?

**Chinese Student Association** - Sept. 21 Science Building room 431, general meeting.

**Anthropology Club** - 12:30 p.m., Science Building room 369, 1st meeting - help plan fall activities.

### Wednesday

**People For Peace** - Sept. 22, SC Rm 304, Meeting to discuss ideas and schedule for homeless campout on Oct. 11-

14. Also, future plans for the club.

**SAPB** - 5 p.m. SC room 215, general meeting. All are welcome. A great way to get involved.

**Business Students Association** - 3:30 p.m. SC 215 Sept. 22, Meeting of BSA. Discuss how to make the business school stronger, bigger, and better! All majors welcome! First meeting.

**Sociology Club** - 5 p.m. Sept. 22, Science 341, First meeting. Elections and program planning for the year will take place.

**Coalition of Lesbians, Gays, and Friends** - Sept. 22, 8 p.m. Science 369, General meeting and rap group. Come out and meet some new people. Refreshments will be served.

### Thursday

**Spanish Club** - H-205 9:30 a.m., Sept. 23, Come join the Spanish Club. First meeting, help us plan what you want. Meeting is in English.

**WPC Men's Group** - 3:30 - 6p.m. SC Rm 315 Sept. 23, Weekly men's discussion group and/or events. They have their movement, now we have ours!

### Future

**Student Handbooks** - Now available, all students are responsible for picking up the new student handbook and being familiar with the policies and procedures it contains. They are available at the Student Center Information desk on the main level and in the Advisement Center Wayne Hall Rm 138.

**Semester Abroad** - Places open in many countries for the spring semester; applications will be received until Oct. 15. Two general information sessions will be held on Sept 30 and Oct. 4, both 3:30p.m. - 5p.m. in SC 326.

**Spanish Club** - Look for our trip to NYC at the Met & Frick Museums with visiting scholar Dr. M. Bretos.

**WPC Men's Group** - Sept. 29 - FREE Screening of HBO movie "And the Band Played On" Don't miss this special opportunity. Times and location to be announced.

Theatre, 10p.m., \$4/students, \$5/non, call Theatre Dept. at 595-2335.

**Feminist Collective** - Feminist collective now forming - need info for convenient meeting dates and times. Call the SGA office at 595-2157 for more information.

**ROCKY HORROR PICTURE SHOW!!** - Leave your inhibitions at home and join us for this unconventional convention! Wed., Sept. 29 Hunziker

**The Beacon**  
needs writers. Come to  
Student Center 310 for our  
weekly staff meeting at  
3:30 on Mondays to find  
out how you can write  
news, sports or  
entertainment.

# SGA HAS ITS PRIVILEGES

THE **S.G.A.** IN COOPERATION  
WITH  
**PLANNED PARRENTHOOD** OF PASSAIC COUNTY  
Has arranged for W.P.C. Students to Receive  
a discount on the many Services Offered by  
**Planned Parenthood.**

Pick up your vouchers at the Womens Center SC214.

Services Include:  
Gynecological  
HIV Testing  
Counseling

Clinics:  
Pompton Lakes  
(201) 839-2363  
Paterson  
(201) 345-7009

This Discount Expires May 31, 1994

## S G A Prescription Plan Rite Aid Pharmacy

431 Haledon Ave.  
Haledon, N.J.  
790-9711

### Regular Price

\$0 - \$15  
\$16.00 - \$30  
\$31.00 - \$45  
\$46.00 - \$60

### WPC Student discount rate

\$5.00  
\$10.00  
\$15.00  
\$20.00

Valid WPC ID is required.

**SGA Student Services**  
Available  
for your use...

**\* FREE \***

**Legal  
Services**

**Gerald Brennan Esq.**  
Student Center Room 330  
Every Wednesday  
2p.m. - 8p.m.

**SGA - Let Us Work For You!!**

William Paterson College



Card must be presented with current college I.D.  
Not valid on special sale merchandise or services. Card expires 9/1/94  
For advertising information call NSDC (800) 321-1025



# WPC a high risk in sex study

By Teresa Dawson  
NEWS CONTRIBUTOR

A study on alcohol and high risk sexual activity, conducted at WPC in Spring 1993, revealed that certain undergraduates are putting the term "getting lucky" to the test.

Although 100 percent of the students surveyed agreed on the importance of discussing safer sex precautions with their partners, 48 percent of the men and 43 percent of the women admitted to having unprotected, alcohol-influenced sex.

Rosemary Gainey, who recently recieved her master's degree in education from WPC, distributed a 16-question surveys to 100 WPC undergraduates passing through the Student Center. The questions dealt with demographic information, the relationship between alcohol consumption and sexual activity, relationships between safer sex precautions and students' attitudes and behaviors.

A summary of the study by Gainey's master's thesis advisor, Scott B. Sigmon, an assis-

stant professor of education, stated, "It was also confirmed that the majority of both men and women were generally knowledgeable regarding Acquired Immune Deficiency Syndrome (AIDS), and about precautions they take to protect themselves against disease."

Gainey's experience as a WPC counselor and the April 1993 AIDS-related death of her cousin Jeff Mahoney motivated her to do her master's thesis in this area.

Gainey encountered many students who told her they "went to a party, got drunk, and had sex without protection" during her nine months working in the counseling center.

She added that some straight, white students thought they were invincible because the media hasn't given enough attention to the heterosexual population.

"It still focuses on AIDS and gay, intravenous drug users. I know from talking to the kids. At freshman seminar, they just mention AIDS. WPC should do more. They haven't done

enough," Gainey said.

Pamphlets concerning AIDS and/or alcohol that contain the information supporting Gainey's thesis, "don't affect anyone, let alone young people," she said.

The following information is found in AIDS/alcohol pamphlets from Health Services: — "Don't mix alcohol or other drugs with sex. These substances can lower your inhibitions and affect judgement, making it more likely that you will engage in risky behavior (from **Protecting Yourself From AIDS**)."

— "Decisions based on the use of alcohol and other drugs can contribute to your neglecting contraception, safer sex...(from

**Decisions: Alcohol**)."

— "Other kinds of drugs, including alcohol, can also cause problems. Under their influence, your judgement becomes impaired. You could be exposed to the AIDS virus while doing things you otherwise would not do (from **Understanding AIDS**)."

"Any educational institution should lead the way in education and protecting their students," Gainey said.

Her thesis stated, "The present methods used by most colleges need to be supplemented by other methods which are more personalized and effective. Among these are peer counseling, informal discussions, sustained educational ef-

forts on AIDS awareness, and probably the most effective method, inviting people with AIDS to campus to speak to students directly about their experiences."

Gainey hopes the disclosure of her survey results makes students think more about alcohol consumption and high risk behavior.

"I think they're intelligent and capable of making the right decisions," she said.

"I'd hope they'd be shocked and scared and take it extremely seriously," Sigmon said. "Maybe this message could save some lives and prevent suffering. If it has an impact on one or two people on campus it would be great."

## Hawaiian students seek new sights at WPC

By Joe Willhelm  
NEWS CONTRIBUTOR

They are two different people from different sides of the tracks, but they had the same dream. Experiencing a different way of life and discovering diverse cultures are what their dreams were made of.

Jason Matsui is a theatre major here at William Paterson through the help of the National Student Exchange Program. Jason is from the Central Oahu, Hawaii, suburb of Miliani.

"The suburbs in Oahu are similar to the suburbs on the west coast. Basketball nets in the driveways and pools in the backyards are just as common," Jason explained.

The University of Hawaii transfer student chose William Paterson to be close to New York and for the opportunity to take classes in directing theatre. He looked at other schools, including Hunter College and Stonybrook College, but felt William Paterson was better able to satisfy his needs.

"To be eligible for the program, students need to maintain a 2.5 grade-point-average, attend the school that they are transferring from for one year, and be in their sophomore or junior year," Jason stated.

The last couple of years he spent living near Honolulu at the University of Hawaii. During this time he worked with a non profit theatre group called Kumu.

Later, Jason got a chance to

direct a play called the "Martha Wars" with the Honolulu Theatre For Youth. His first taste of directing came in high school and at Leeward Community College. Tragic comedy is his favorite film or play genre. Terry Gilliam, of Monty Python fame, is Jason's favorite director because of his work with tragic comedy.

"I've always wanted to experience New York and the East Coast culture," Jason stated with enthusiasm. Although he misses the Korean Barbecue from his homeland he asks, "Any suggestions for a good Korean restaurnt or any invites for a home-cooked meal would be greatly appreciated."

"The college scene is universal. It may be in a different setting, but the people are there for the same reasons," Jason contemplated.

Jesse Reese, also from Hawaii, was raised on the Oahu countryside of Wainane, and even though the land abounds with beauty, she yearned for a change of scenery.

Living in Hawaii all her life, she always dreamed of going to a school on the mainland. Her scholarly aspirations were delayed though, for she signed a contract to dance with her Halau (Hula Dance School), in Japan, at the end of her senior year in high school. The Halau practice and perform year round honing there hula skills for the Merry Monarch Festival, comparable to Carnival in

Rio de Janeiro. It's a contest between the schools to see who performs the best hula.

"It's a contest but it's also a huge celebration," Jesse commented.

After practicing for three and a half months with her Halau she decided to go back to school and pursue an education in communications. Jesse attended Leeward Community College and graduated with a degree in Liberal Arts. She then transferred to the University of Hawaii studying communications management. It was there that she applied and was accepted into the National Student Exchange Program.

"Choosing a school was the toughest choice," Jesse stated, "I wanted a different experience, and what could be more different than the East Coast? I didn't want to be thrown into the jungle of the city, but I wanted it to be accessible," she said.

"William Paterson has an outstanding communications department and has easy access to New York City," she added. Jesse is glad to be attending William Paterson, but she misses the plate lunches; two scoops of rice, a scoop of macaroni salad, and meat in teryaki sauce; and the raw fish dishes of her homeland.

"I hope to see the many different sights and experience the many different customs of the East Coast culture," Jesse eagerly stated.



**DANCECLUB**

WORLDCLASS D.J.'s SPIN THE SMAR  
MIX FOR PEOPLE ON A HEALTHY  
AURAL DIET. HERE'S A SAMPLE...

SMASHING PUMPKINS • GIN BLOSSOMS  
APEX TWINS • NIN • BLIND MELON • BAD • NOFX  
FOR PYROS • ALICE IN CHAINS • STP • NEDS • BELLY  
• STEREO MC'S • SOUND GARDEN •  
DRAMARAMA • R.H.C.P. • SUNSCREAM • SLOAN  
• P.E. • REV HORTON HEAT • CANDY SKINS  
• ADORABLE • MADDER ROSE • 3 1/2 MINUTES  
• DINOSAUR JR. • TOM JONES • HELMUT • SUEDE  
• SONIC YOUTH • DICK DALE • FRONT 242 • PAW  
• PRIMUS • TEENAGE FAN CLUB • HOUSE OF PAIN  
• SUGAR • BEASTIES • PAVEMENT • JAMES • PEARL  
JAM • GREEN JELLY • JAMES BROWN • BARRY  
WHITE • RADIO HEAD • SUGAR CUBE • WOLF  
GANG PRESS • ARRESTED DEVELOPMENT  
• LORDS OF ACID • ETC...

**LIVE VENUE**

WATCH FOR SPECIAL LIVE SHOWS.  
ACTS LOCAL TO INTL. THESE ARE SOME  
BANDS THAT HAVE PLAYED THE LOOP.

FAITH NO MORE • NINE INCH NAILS •  
APB • THEY MIGHT BE GIANTS •  
SCHOOLY D. • GANG OF FOUR • THE FEELIES  
• UNTAMED YOUTH • KILLING JOKE • JOHNNY  
THUNDERS • THE SMITHEREENS • HENRY  
ROLLINS BAND • DUMP TRUCK • SILLY RABBIT •  
FLESH FOR LULU • THE SELVES • GIMMIE THE  
GUN • SQUARE 1 • BARRENCE WHITFIELD & THE  
SAVAGES • SWEET LIZARD ILTET • RICHARD  
LLOYD • THE SILOS • KONK • CLOSE LOBSTERS •  
MIRACLE LEGION • THEY EAT THEIR OWN • SCRAM  
• DIG • YOUR MAMA • ANYTHING BOX  
E.S.G. • LUCKY 7 • WINTER HOURS  
Billy Goat • Dread Zep

**THURSDAYS**

.75¢ DRAFT ALL NIGHT

**WRECKING BALL WEDS.**

GIRLS ADMISSION FREE

\$1.00 DRAFT • \$2.00 SOL

**DANCE OR HANG**

WED. THRU SAT.

SOUND CONDITIONED

MUST BE 21 YRS.

**Fri & Sat**

**FREE ADMISSION**

**BEFORE 10:30 p.m.**

**\$1.00 DRAFT until 11:00**

**DIRECTIONS:** FROM CAMPUS OUT OF GATE 4 - GO RIGHT ONTO RATZER RD. - GO TO END & MAKE LEFT ONTO VALLEY RD. & GO TO END & MAKE LEFT ONTO RIVERVIEW - TAKE RIVERVIEW TO 46 EAST - 46 EAST TO RT 3 EAST - PASSAIC AVE. EXIT - RIGHT OFF RAMP - FOLLOW TO THIRD TRAFIC LIGHT - MAKE LEFT ONTO VAN HOUTEN AVE. - FIRST LIGHT MAKE RIGHT ON BROADWAY - LOOP IS ONE BLOCK ON RIGHT

**373 BROADWAY, PASSAIC PARK, N.J. 365-0807**



# Hobart Hall to be unveiled

William Paterson College will officially unveil its redesigned communication showcase on September 22 with a formal grand opening of Hobart Hall.

A day-long schedule of special events will begin at 10 a.m. when President Arnold Speert and other speakers dedicate the extensively renovated communication center in ceremonies to be held in Television Studio A.

"As William Paterson College continues its leadership role in the field of communication, we are committed to providing our students with opportunities to learn and gain experience in all aspects of the exciting technological revolution which is linking us so closely to global issues and the people of the world," said George McCloud, dean of the school of

arts and communication. "Hobart Hall and its modern technical facilities provide the means for us to do this."

The \$5 million expansion of Hobart Hall began in 1991. It features the Nicholas Martini Teleconference Center, a state-of-the-art technical facility which includes a large teleconferencing auditorium where programs can be originated and

received through the college's uplink and downlink satellite dishes. The center is the only noncommercial teleconferencing facility in the state and is being used to train students in this fast developing medium and by business and community groups who wish to communicate their messages nationally and internationally.

Hobart Hall contains two

television studios, video editing rooms, a cable transmission system, a film screening room and film production facilities, multimedia computer laboratories for electronic and print journalism, a news room, studios for WPSC-FM and faculty and staff offices. The building also will house a component of the college's award-winning computer graphics program and

WPC's electronic music lab.

In addition, Hobart Hall is the center for the **New Jersey Journal of Communication**, a scholarly publication, and the Communication Research Group, created by WPC faculty members to explore the impact of the communications revolution on everyday life.

MONTRÉAL


Includes- trans & Lodging in luxury Hi-Rise in Downtown Montreal

\$129

TAKE A GET-A-WAY WEEKEND TO WHERE THE DRINKING AGE IS ONLY 18! PARTY WITH 50 OTHER COLLEGES FROM AROUND THE COUNTRY! FREE PASS TO CANADA'S LARGEST NIGHT CLUB

Call for info: 201 839-0594 BEEPER#403-7203

What to use when your term paper's still not finished but your printer is.



With Visa® you'll be accepted at more than 10 million places, nearly three times more than American Express. And that's not a misprint.

Visa. It's Everywhere You Want To Be.®

PREGNANT?  
NEED HELP?

WE CARE.  
CALL US.  
423-9499  
Abortion  
Action  
Alternatives

FREE PREGNANCY TESTING  
AND COUNSELING  
1120 GOFFLE ROAD  
HAWTHORNE, NJ 07506



HE LOVES ME



# In memorium

**Mary Ellen Forbes Kramer**, director of community affairs, died July 18 of lung cancer at Norwalk Hospital in Connecticut.

A resident of Paterson, she was an individual who dedicated her life to the community in which she lived.

Born on Dec. 5, 1936, she was a graduate of the city's Benedictine Academy, which no longer exists, and received a bachelor's degree from Mary Washington College of the University of Virginia. She received a master's degree in clinical psychology from George Washington University, Washington.

She practiced briefly as a school psychologist before marrying Lawrence "Pat" Kramer. Mr. Kramer was elected mayor of Paterson, a post he held for four terms and 14 years.

Kramer put her psychological training to work, using motivational and organizational skills to halt the construction of Route 19 through the site of Paterson's historic silk mills in

1969.

From 1968 to 1976, Kramer served as executive director of the Great Falls Development Corp., now known as the Great Falls Preservation and Development Corp., creating a concept for changing the public perception about the historic mill district and raising funds to maintain Paterson's history.

Kramer put together Great Falls Park in 1971 in six weeks with assistance from Paterson's government and volunteer effort.

Her hard work paid off in 1976, when former President Gerald Ford came to Paterson to declare the Great Falls district a National Historic Landmark.

# In 1981, Kramer received an award from the National Trust for Historic Preservation for her "outstanding individual achievement in planning, preservation and redevelopment" of the Great Falls. She also served as one of two state advisors to the National Trust.

Coming to William Paterson College in 1979, Kramer was

hired to establish the college's first office of community affairs.

On campus she was instrumental in founding the Wayne Chamber Orchestra (a joint project with the Greater Wayne Area Chamber of Commerce); developing the Distinguished Lecture Series supported by corporate contributions, with such speakers as Henry Kissinger, Spike Lee, Norman Mailer, Dick Cheney, and John Updike; creating the Legacy Awards to raise scholarship funds; collecting more than \$300,000 to restore the Hobart Manor; and founding the Chamber Music Series.

Despite her demanding work schedule, she continued her community involvements. Kramer served as secretary and chairperson of the Public Relations and Education Committee of the New Jersey Historical Trust; the board of directors of Straight and Narrow, a drug and alcohol rehabilitation center in Paterson; was the vice president of the Paterson Alumni Association Founda-

tion, an organization that provides grants to community educational and social programs; and was on the board of directors of St. Joseph's Hospital and Medical Center in Paterson.

Surviving are her companion, Irving Appleman; her mother, Catherine Forbes of Wyckoff, N.J.; a daughter Patricia Kimberly Sposa of Vernon, N.J.; two sons, Lawrence, and Patrick, both of Paterson; three brothers, Cyril Forbes of Montclair, N.J.; William Forbes of Paterson and Paul Forbes of Morristown, N.J.; and two sisters, Joan Forbes of Wyckoff and Nancy Braithwaite of Nassau, the Bahamas.

A memorial fund has been developed in her name by the Paterson Alumni Association. Donations can be sent to Suite 418, 100 Hamilton Plaza, Paterson, NJ 07505. In compliance with Mrs. Kramer's wishes, the fund will be used for the beautification of Eastside Park.

**Richard Jaarsma**, a tenured professor of English, died July 3 of a heart attack. Part of the William Paterson staff since 1969, he was 54 and resided in Glen Rock, New Jersey.

Born on Dec. 23, 1939, in Amsterdam in the Netherlands, he was the recipient of numerous scholastic awards. Among these were the Woodrow Wilson Fellowship in 1961 and '62; the National Defense Education Act from 1961-64; and was a Rutgers University Research Fellow in 1963. He received his Ph.D. from Rutgers University in 1966.

He published various scholarly articles over the years, including ones on T. S. Eliot, Shakespeare, Boswell, and a great deal on Oliver Goldsmith.

He had recently been teaching undergraduate courses on Shakespeare and Science Fiction and Fantasy.

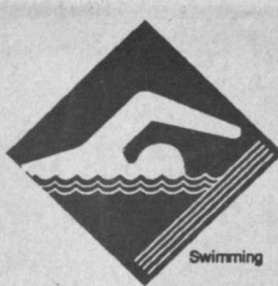
Surviving are his wife, Janet, of Glen Rock; his son Jonathan, 27, of Ramsey, New Jersey; a daughter, Valerie, 25, also of Ramsey; and a sister, Irene, of Colorado.



Football



Basketball



Swimming



Body Building



Volleyball

## REC CENTER

*BE A PART OF THE ACTION*

### INTRAMURALS

OUTDOOR VOLLEYBALL TOURN	9/9
FLAG FOOTBALL	9/14
FB OFFICIALS MTG	9/15
TENNIS SINGLES	9/14
VOLLEYBALL (M/W)	9/28
COED VOLLEYBALL	10/12
RACQUETBALL DOUBLES	10/26
WALLYBALL	11/9

NOTE: MOST INTRAMURAL SPORTS HAVE A NOMINAL FEE PAYABLE UPON REGISTRATION. DATES SUBJECT TO CHANGE WITHOUT NOTICE.

### NON-CREDIT CLASSES

AEROBICS CLASSES	9/12
AQUACISE	9/14
HAPKIDO	9/13
FIRST AID & CPR	9/21
WT. TRAINING SEMINARS	TBA

REQUIREMENTS/GUIDELINES FOR PARTICIPATION IN ANY EVENT OR USE OF THE FACILITIES MAY BE OBTAINED AT THE REC CENTER CONTROL DESK.

### SPECIAL EVENTS

NAT'L FITNESS WEEK	10/18-22
LIFESTEP CHALLENGE	10/18-22
AEROBICS SUPERCLASS	10/21
TIMEX COMPETITION	10/18-22
MIDNIGHT MADNESS	11/12

### TICKETMASTER OUTLET

MON-FRI 9 AM - 10 PM  
SAT & SUN 9 AM - 8 PM  
PHONE 595-2032  
CASH ONLY!!! CASH ONLY!!!

### REC CENTER BUILDING HOURS

MON-FRI 8 AM - 11 PM  
SAT & SUN 9 AM - 9 PM  
PHONE 595-2777  
VALID WPC ID REQUIRED!!!!

### POOL/OPEN REC SWIM

MON - FRI 11 AM - 2 PM  
MON - FRI 7:30 PM - 10 PM  
SAT & SUN 12 NOON - 4 PM  
POOL IS LOCATED IN WIGHTMAN GYM



## EDITORIAL

# Administration ignores student concerns

It seems that there is a lot of anti-administration sentiment wafting through the air while the impressive campus construction is going on. Students are upset about a lot of things, but, what it all seems to boil down to is the administration's sense of priorities. This sentiment is evident in the letters that appear on these editorial pages.

This construction has caused quite a few complaints from students over the past years. For example, why are course sections and faculty cut? The administration will always give us the same answers; because the state keeps cutting back our funding and the money allocated for the development for all of our new wonderful buildings can only be used for the development of our new wonderful buildings. It's hard enough as it is to find a class that is open, let alone one that can accommodate a difficult work schedule. With fewer class sections and times, it is even more difficult. Furthermore, if students can't get their classes and therefore can't take enough credits in a semester, they have to stay in school longer. We all

know that staying in school longer means more tuition and fees to pay. That just isn't fair if we can't get out in four years because there aren't enough classes open.

Why are library hours being cut? We've heard it before, funding was cut for state schools. But why is the Rec Center open longer than the library? This is college isn't it? It's because the Library is funded by tuition and the Rec Center is funded by fees. Isn't there some way that we can get around that. Will some nice administrator come up with a good idea to reallocate some funds so we can do what we came here to do; to study? Funds can be reallocated for other things, why not this? Ten o'clock was early enough to close the library and now they are going to kick us out earlier. Thanks.

Sometimes, it seems like important concerns like these are not taken seriously. Why should they be? The president and vice presidents will be here when we leave. After all is said and done years down the road, this campus will have some

beautiful new state of the art buildings and all of our concerns won't mean anything anyway. Now we know how the president and vice presidents sleep at night. Granted, the complaints that students are raising are difficult problems to solve. But why does it feel like they are being either ignored or callously explained in unconvincing administrative jargon? We understand that we don't have a lot to work with but it is time this administration reconsiders its priorities.

It isn't that we don't believe that these buildings won't be new and wonderful, but it's troublesome that we won't be here to reap the benefits when they are done. Of course, students years ago went through some inconvenience while the buildings we have now were being built. Were as many people working for their own education? It would probably help if the construction was planned better. Maybe it would help if it was spread out over a longer period of time. But who cares? We're pretty sure the administration doesn't, unless they prove otherwise.

## LETTERS

### Library closing angers student

Editor: The Beacon

As I return for another year at William Paterson College, I would like to thank President Arnold Speert and the administration for ruining another aspect of the college community. Their latest fiasco pertains to the library.

Realizing that the library needs improving, I am willing to accept a slight inconvenience of searching throughout campus for necessary resources but the problem arises over the closing time of 9 p.m. for the Fall semester. The rationale for the early closing time is supposedly budget cuts, but meanwhile, there is plenty of money to put on an addition.

The early closing of the library is unacceptable due to the fact that we are now inconvenienced by the separation of the library's resources. Also, it is ridiculous that the library should close at such an

early time because the library is supposed to be a vital part of our college education and should be accessible at later hours.



The students at this college deserve to have a library that is open at least one hour after their classes are over so we can pretend that William Paterson College is a real education.

Robert B. Kidd  
History

### Security not campus priority

Editor: The Beacon

I would like to share with you an experience I recently had on campus.

On Monday, Sept. 13, I attended class in the new communication building. When class ended at 8:30 p.m. I proceeded to the front of the building to wait for my ride. After passing through the front doors, I discovered that the entire parking lot was black. Out of the 12 new lights, none were working, it was difficult to see anything in front of you. After standing in the dark for about ten minutes, I decided to call maintenance and complain. I spent the next 20 minutes studying floor plans and walking around only to discover that there were no visible campus phones. I then decided to try calling campus police but I didn't know the phone number and I didn't have change. I

see page 15

#### The Beacon

Founded in 1936

Pamela Johnson  
Editor-in-Chief

News Editor  
Randee Bayer-Spittel

Asst. News Editor  
John F. Gillick

Copy Editor  
Keith Markussen

Insider Editors  
Mike Garry  
Dawn Marecki

Sports Editors  
Joe Ragazzino  
Brian Yaworski

Staff Writers  
Walter Elliott  
Joe Brennan

Staff Photographer  
Joshua Smith

Staff Columnists  
Albert Stampone  
Brian Yaworski

Business Manager  
Dino Stampone

Advertising Manager  
Shaya Ansari

Design Director  
Joshua Smith

Illustrator  
Brian Lynch

Circulation Manager  
Ari Saperstein

Advisor  
Tina Leshner

Business Advisor  
Barbara Stomber

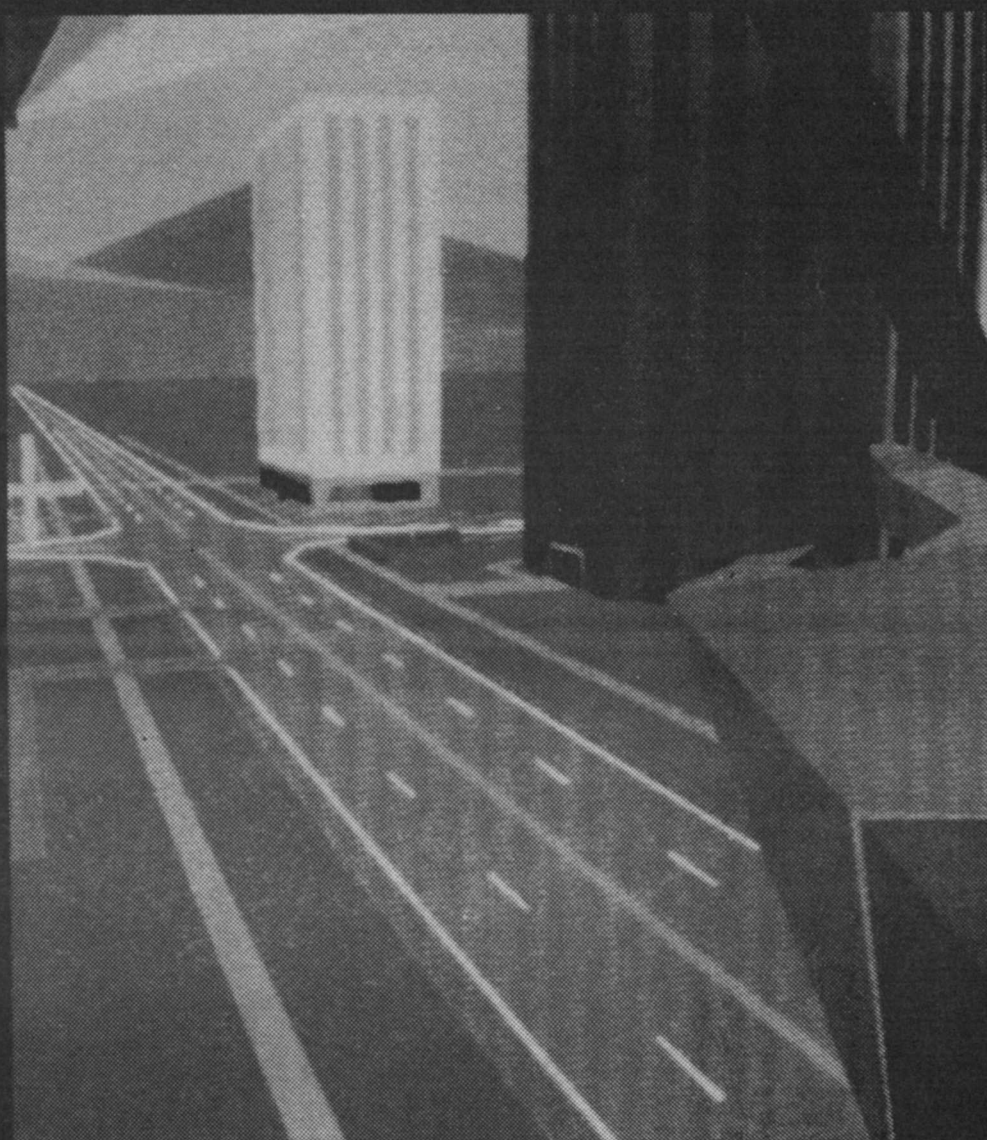
The Beacon of William Paterson College is published by the students of William Paterson College of Wayne, New Jersey 07470, with editorial, production and business offices in room 310 of the Student Center. Newspaper content represents the judgment of The Beacon staff in accordance with The Beacon constitution and does not necessarily represent the judgment of the Student Government Association, the administration, faculty or the State of New Jersey. Opinions in signed columns and letters to the editor are not necessarily the opinion of the staff. This paper is independently funded. Editors can be reached by calling 201-595-2248 or 201-595-3264.



Reality+

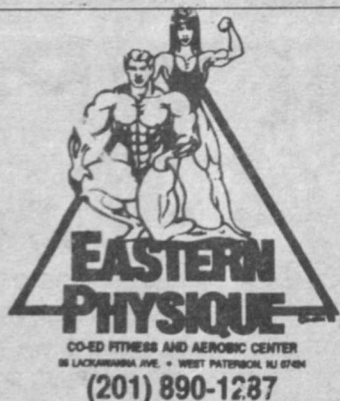
Reality+

Reality+



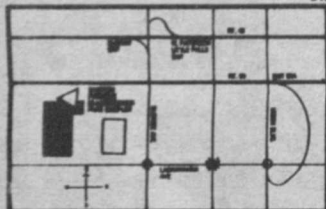
THE INSIDER





## Newly Renovated!

- ▶ New State of the Art Equipments: CYBEX BODYMASTER • HAMMER STRENGTH
- ▶ New Aerobic Center
- ▶ Free Weights and CardioVascular Equipment
- ▶ Pro Shop
- ▶ Juice Bar
- ▶ Tanning Facility
- ▶ Air Conditioning
- ▶ One On One Training
- ▶ Gift Certificates Available
- ▶ Special Rates For Policemen, Firemen and Students



FROM 46 W — Exit at Middle Ave./Go down ramp — Turn right at 8th traffic light, turn right onto Lackawanna Ave. Mid-block turn right to 88 Lackawanna Park Complex.

FROM 46 E — Exit at W. Paterson/Little Falls/Go down ramp — Turn left onto Lackawanna Ave. At traffic light, turn right onto Lackawanna Ave. Mid-block turn right to 88 Lackawanna Park Complex.

FROM 90 W — Exit 35A/Go down ramp onto Union Blvd. Turn left at traffic light onto Lackawanna Ave. Go past blinder and after traffic light turn right into 88 Lackawanna Park Complex.

## SPECIAL OFFER\* FOR FIRST TIME MEMBERS ONLY

POLICEMEN, FIREMEN, STUDENTS RATE		SPECIAL RATE
\$ 69 <sup>00</sup>	3 MONTHS	\$ 89 <sup>00</sup>
99 <sup>00</sup>	6 MONTHS	129 <sup>00</sup>
189 <sup>00</sup>	1 YEAR	239 <sup>00</sup>

WITH COUPON ONLY

HOURS: Mon.-Fri. 8:00 - 10:00PM Sat. 10:00AM - 5:00PM Sun. 10:00AM - 4:00PM

Outdoor Club Meeting  
Wednesday, Sept. 22nd  
At The Student Center

Room 324-25  
3:30 to 4:30



FOR INFORMATION ON UPCOMING  
OUTDOORS CLUB ACTIVITIES  
CONTACT:

Joe Wilhelm  
Club President  
305-5864  
OR  
595-2777



Tuesday Night at the Movies

9:00pm  
Admission:  
\$2.00

Billy Pats

Unlimited Free Soda & Popcorn

Any plans for

Spring?  
Break?

How about Cancun, Mexico?  
Stay tuned for more info!!

Friday Night  
Live

Starring

Red Johnny & The Round Guy

Oct. 8 9:00pm  
SC BR FREE

S.A.P.B.

GET INVOLVED!

General Meetings

Wednesdays at 5:00pm

SC 215



# V.R. revolution demo at WPC

**By Evan Robb**  
INSIDER CONTRIBUTOR

Almost everyone's heard of virtual reality, but not many people know exactly what it is, or understand its potential applications. Andrew Adrion, president of Virtual Images, Inc., is trying to change that.

Virtual Images, based in Columbus, Ohio, is the leader in V.R. technology and is currently on tour with its machine called "Reality +."

On Wednesday, September 15, S.A.P.B. (Student Activities Programming Board) had Adrion and his machine at Club Fair giving free demonstrations to students.

"Reality +" is a video game system that puts the player inside the game with a video screen mounted inside a helmet and a three-dimensional headphone sound system. What puts this machine on the cutting edge is that the player can look up, down, and turn his body 360 degrees to explore the environment. A hand-held controller with sensors allows the player to "walk" by pointing in a direction and pushing a knob. There is also a trigger by which the player is to defend himself/herself by shooting at hostile automobiles and a flying robot.

One of the buildings in the virtual environment can be entered by the player who pushes a button that brings him to the top of the building where a hang-glider is waiting. The player can then fly around the city.

General opinions on the machine varied. Some students I talked to

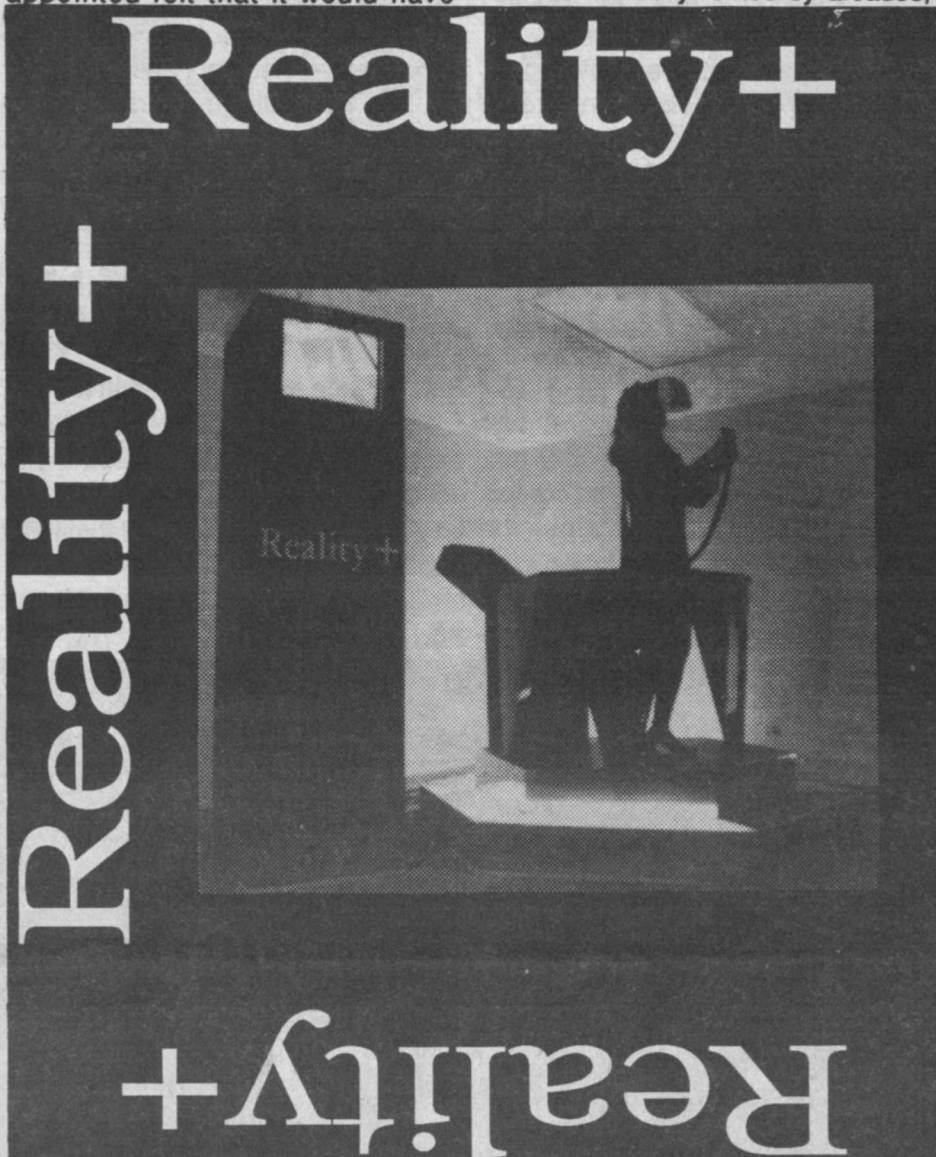
were quite impressed, and actually felt like they were in another world. Some of the students who were disappointed felt that it would have

ted on the machine was not enough to fully adjust to the virtual scenario.

However, when these machines are commercially rented by arcades,

more than a new type of video game, consider the fact that Virtual Images is already designing custom machines for applications in the military, architecture, medicine, industry and education. According to Adrion, modern homes are being built with fiber optic lines built in, which would enable the homes to be linked to all kinds of computers, including V.R. systems that would make possible things like a V.R. supermarket where shoppers could walk through the aisles, pick the items they want to purchase, interact with other shoppers, and have the merchandise shipped to their home.

Much of the sentiment against V.R. stems from the idea that it will shut people off from the real world. Although Adrion could not speak for other companies, he explained to me that the goal of Virtual Images is to bring people closer, by using V.R. as a communication tool. In fact, when I asked him what his idea of the ultimate V.R. machine would be, he said one that would allow him to have a conversation with someone across the globe, but a conversation as realistic as the one he was having with me, in which he would see, hear, and touch a person. So, like it or not, this is the direction our technology is moving toward. New technology always generates some instinctual feeling in all of us that things are fine the way they are. But, as Dr. Kolack, a professor in the Philosophy Department explained to me after stepping out of the machine, "Socrates was against books."



been more realistic if they hadn't heard sounds from the outside distracting them from the virtual world. Others, like myself, felt that the three-and-a-half minutes of time al-

it can cost anywhere from three to eight dollars for a session, which can get expensive.

If it looks like all of our current technology is adding up to nothing

## *Style...in, out, around and over.*

**By Albert Stampone**  
STAFF COLUMNIST

So when exactly did it become commonplace for women to wear men's clothing? Did it start in the 70's, 80's or 90's? Did Marsha Brady throw on her brother Greg's turtle-neck and bell-bottoms during their vacation to the Grand Canyon? Was that Theo Huxtable sweater that Vanessa had on? And was I having delusions, or didn't Lisa Simpson every once in a while try on Bart's t-shirt when he wasn't home?

And while we are on the subject, why do they do it? Does it fulfill some tribal masculine fetish or is it just a passing stylish tide just waiting to be swept out to sea?

Nevertheless, from the dressing room to the school room to the rave

room a newly crowned androgynous King has ascended the throne of Vogue. Judging from the number of collaborators in the kingdom, it may take a crane to pry (him/her?) off.

To begin to understand the nature of the beast we must first explore why it lives. However, in this case, opinions will differ since this particular style's beginnings are subject to personal bias and belief. There is no definitive answer, on where it came from, only conjecture, which subsequently adds to its mystique.

"With the predominance of masculine music styles like sub-pop and hip-hop," says insider/style maven Tim McCarthy, "I think one can definitely see an active female tendency to crossdress."

"Also, with the emergence of les-

bian chic in pop culture, [this look] is king and the fashion conscious woman is influenced accordingly much like Madonna's currently infamous "Girlie Show" tour; a study in androgyny.

Obviously, not all women wear men's clothes for the same reasons. For some it may instill a feeling of rebellion or of being somewhat outlawed. For others the motivation may be music. Some may not even have a reason. But then again aren't these the same methods employed by previous generations? If so, then it's just a cycle of cultural expression for those involved.

"Women enjoy dressing in men's clothing," says Georgina Doukkali, associate manager of the Gap in Paramus Park Mall, one of the more popular, if not the most popular cloth-

iers for gender-benders, "because it offers freedom of choice from the average skirt and blouse."

The term "men's clothing" is a designation which includes every conceivable item on the male garb menu from baggy jeans to boxers. It's an endless fishry from which to stuff your face.

"Men's clothing is a lot more comfortable," says Doukkali. "It is made for movement as opposed to just looks. (It also) tends to be more classic. You can buy a man's shirt and keep it forever. Women's clothing is usually made more for the season."

Off with Norma Kamali's head. Long live the King.



# Is L.A. band alternate to "alternative?"

By Dawn Marecki

INSIDER EDITOR

The L.A. metal scene is shrouded in history, and the city *had been* a Mecca for aspiring young artists. From the depths of smoky, dark clubs like The Whisky a-Go-Go and Gazzarri's sprung multi-platinum acts. Witness: **Van Halen**, **Motley Crue** and **Guns N' Roses**.

For me, the appeal of music journalism brought the appeal of the L.A. scene.

Unfortunately, with the rise of "grunge", Hollywood glam rock has taken a back seat; L.A. rockers have been dubbed "clones with no serious musical potential."

Determined to refute this claim, I frequented clubs like The Whisky and The Roxy along the Sunset Strip, until I came face to face with the musical discovery I had searched for.

**Alleycat Scratch**, a.k.a. "The Hollywood Deadboys" is somewhat of a caricature in L.A.. Club-goers know the name, and most either love the band or hate them, and that is exactly how Devin Lovelace, guitarist/founder/songwriter likes it.

"We want either really great or really shitty reviews," he explains. "There are no in-betweens."

**Alleycat Scratch** (Devin; Robbi Black, drums; Boa, bass; and Eddie Robison, vocals) was formed three years ago and spent time gigging around San Francisco (with former vocalists Tommy Hight and Michael Michelle) before relocating to Hollywood. The present lineup has been together since November, supported by manager/"mom", Sheli Leigh. The band members met through ads in **Bam**, **The California Music Magazine**, and Eddie joined after his former band, **Resurrection Mary**, split. According to Devin and Boa, Eddie's addition to the band has supplied a necessary change, lyrically and aesthetically.

"Eddie can sing any song, on key, at any given time," says Boa. "And he has a great stage presence."

Truly, with a demeanor much like **Faster Pussycat's** Taime Downe, Eddie projects an onstage image that keeps the crowd in a trance, particularly during the ballad, "Roses On My Grave." In fact, the band's stage show is so raw and powerful that it's nearly guaranteed to make a fan out of even the biggest skeptic.

But, getting booked at clubs like The Roxy and The Whisky does not guarantee success, nor does it even

guarantee a solid following.

**Alleycat Scratch** has struggled to gain the faithful following it has, and the band spends many days and nights handing out flyers for upcoming shows. People aren't always responsive and most flyers end up in the trash or strewn along Hollywood streets.

"Maybe we should put glue on the flyers so people won't be able to throw them away," jokes Devin.

Luckily, **Alleycat Scratch** received enough response to reach headline status at popular Hollywood venues.

"The Hollywood Deadboys" now limit their shows to once every two months to avoid being played out too quickly. As Devin explains, the shows get bigger and bigger each time, so Eddie, the band's resident graphic artist and tattoo demon, has

became fully swept up in the excitement of **Alleycat Scratch**.

Devin, with a stage presence reminiscent of **Motley Crue's** Nikki Sixx, continually wowed the crowd with solos that were technically tight without being bland or generic.

The band also performs cover tunes like **Ministry's** "Revenge" and **Hanoi Rock's** "Malibu Beach."

**Alleycat Scratch** has drawn audience's well beyond capacity. In fact its last show at The Roxy (8/28) drew nearly 600 people (about 450 is a sellout) on a night the **Van Halen/Vince Neil** ticket was in town.

Based on the response to its live shows, the band has released their debut CD, *Deadboys in Trash City* on their own Kick Your Cat label this past spring, and reviews in L.A. Magazines like **Rock City News** rate the effort a success. The 10-



**Alleycat Scratch**, (Clockwise from top): Robbi Black, Boa, Eddie Robison, Devin Lovelace.

designed a new backdrop featuring the band's mascot, a cat named "Crotch."

Back in May, I caught a show at The Roxy and was literally blown away. The club was packed and the boys did not let anyone down.

From the wild "Love Sick Junkie" to the raucous "Trash City," the crowd was transfixed.

Boa's powerful bass lines pounded through "Cat's Got Your Tongue" and "Cheap City Thrills," and Robbi's heavy handed drumming carried the band through "You're All I Drink About."

Though I was stuck between a speaker and about a dozen screaming fans, it seemed only a minor inconvenience. When the band launched into "Take A Bite (Outta Me)," a tune that sounds like a cross between the material of **Hanoi Rocks** and early **Faster Pussycat**, I

track disc was recorded in five days, and engineered by Mikey Davis, who has worked with **KISS** and **W.A.S.P.**

*Deadboys in Trash City* has been selling well in and around the L.A. area, and sales across the country have picked up as well. The disc is also available in Belgium, Denmark, and select import shops in England. It can be purchased through mail order in the States.

Interest from record companies across the country has been growing, but plans are tentative at present.

"We want to wait for the killer deal," explains Devin. "We don't care if it's a big label because the deal is what's important; it depends on how they treat us."

Though many Hollywood bands have been dropped from labels lately, **Alleycat Scratch** is still hopeful, since fellow locals like **Swingin'**

**Thing** and **Blackboard Jungle** have received deals.

"Some local bands have gotten signed, so now we can move in," say Devin. "It may spill over."

In the meantime, the band plans to tour the West Coast extensively. Having recently returned from a road trip to Arizona, **Alleycat Scratch** is psyched for its next show at The Roxy on October 22. Eventually, "The Hollywood Deadboys" plan to tour nationally and hit a few clubs in the New York area.

Luckily, nationwide interest has increased courtesy of word-of-mouth and continued promotion. **Alleycat Scratch** is featured in **Metal Edge's** "Rock on the Rise" section (Nov. '93) and mentioned in the "Buzz" section of the current issue of **Rip**. They were also featured in a cover story of L.A.'s **Rock City News** (April 14-24).

The band's appeal may be due, in part, to the band member's amicable attitude towards fans. At present, more than 2000 people are on the band's mailing list, and more names are added daily. The members personally answer nearly every letter they receive.

Further interest grew when a porno company chose an **Alleycat Scratch** tune that Devin calls "the love song" (title too raunchy for print) as a trailer in one of its films.

So, with all this hype surrounding **Alleycat Scratch**, exactly what is its image?

"We are not glam," stresses Devin. "We are more dark and vampire; gothic if anything."

What is certain is that **Alleycat Scratch** is not part of the "grunge"/Seattle scene that has permeated airwaves. In fact, the band encourages the movement away from the "grunge" with full force, citing the Seattle image as repulsive.

"It's a sad state of affairs when you can't tell the lumberjacks from the rock stars," comments Devin.

Maybe this attitude is a refreshing change as the backlash against "grunge" gains momentum. Maybe what we need is "an alternative to alternative." If so, **Alleycat Scratch** will continue to claw its way to the top and may rise to the forefront of this movement.

For those who thought the L.A. scene (and glam) is dead, here lies proof that it may be ready to explode again. Whether this is a blessing or a curse, one can never tell.

In the meantime, in the words of **Alleycat Scratch**, "Keep Rockin and BURN YOUR FLANNELS."



# Synth + Death Metal=?

By Aryeh Nussbaum

INSIDER CONTRIBUTOR

## Pestilence/Spheres

(Roadrunner)

For a band that comes from the Netherlands, a country that's not known for its contribution to music, **Pestilence** is not a bad representation, though they should clean up their act and get rid of the synthesizers.

The quartet is made up of Patrick Mameli on vocals, guitar and synth guitar, Marco Foddiss on drums, bass, Jeeen Paul Thesseling, and Patrick Ulerwijk, guitar. In most cases a band's vocalist writes his own lyrics. On *Spheres*, Foddiss, the drummer, writes them and while he's no James Hetfield (**Metallica**), he does a credible job. **Pestilence's** riffs aren't all that original, but "borrowing" is a common practice in the rock world.

*Spheres* has eleven tracks and except for the instrumentals, "Aurian Eyes," "Voices from Within," and "Phileas," all of which are permeated with synthesizers, I thought the album was decent.

The lead off track, "Mind Reflections," is a heavy, straightforward death metal song with plenty of steady double bass and a decent main riff. "Multiple Beings" is another solid song and has a cool finish.

The third song off of *Spheres*, "Level Of Perception," starts with a couple of seconds of synth which isn't impressive on it's own but as the song builds it improves.

While listening to the tape, I heard strange jazzy sounds emanating from my stereo. "Personal Energy" is a combination of jazz, adult contemporary elevator music and death metal with little synthesizers involved. But, Mr. Mameli was singing through a computer and that is definitely *not* cool.

The title track is one of the better songs on the album but the next one, "Changing Perspectives," is the best on the tape. If it weren't for the "Twilight Zone" theme being played in the background the band might have a chance.

"Demise Of Time" is the last song on the album and if it weren't for the vocalist, I'd think it was **Dream Theater**. "...Time" comes out



hard-hitting and aggressive, then goes Morello of **Rage Against The Machine** into a funky groove and switches to a line who don't use synth guitars. back etc., hence, **Dream Theater**.

would recommend *Spheres* to **Pestilence** are talented musicians who doesn't mind guitarists who play well together but synthesizers and listens to heavy metal and a bit of thrash. For those who don't understand that synthesizers metal and a bit of thrash. For those and metal, let alone death metal, who share my feelings, be patient don't mix. If they want weird sounds because some new **Sepultura** is on they should refer to Steve Vai or Tom the way.

# Ex-Replacement offers solo LP

By Tom Flynn

INSIDER CONTRIBUTOR

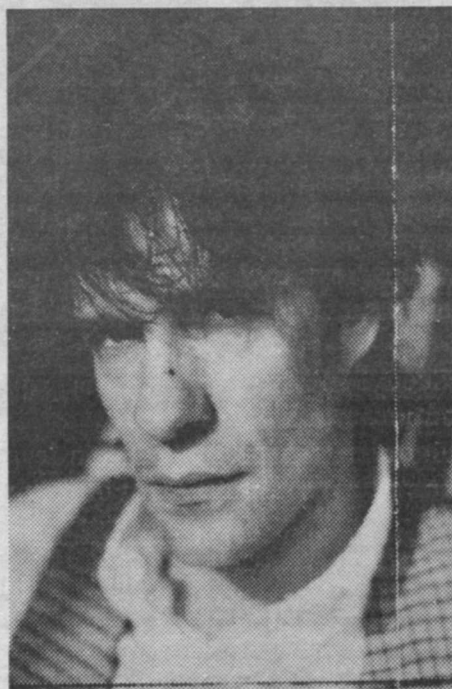
## Paul Westerberg/ 14 Songs (Sire)

Filled with all the power chords and quips which made **The Replacements** a staple in any angst-ridden teen's musical library, Paul Westerberg's debut release, *14 Songs*, is a tongue-in-cheek redemption of the man who sired **The 'Mats'** (a.k.a. **The Replacements**) melancholic *All Shook Down*.

The universal power-pop appeal of this 14 song collection is contained

in Westerberg's bombardment begins with "Knockin' on Mine," in which he churns out a rock and roll groove reminiscent of tunes such as "Merry Go Round." Already receiving considerable radio airplay, "World Class Fad" is a tumultuous array of sing-along lyrics, quite possibly aimed at those who expect this album to be a full-length version of Westerberg's contributions to 1992's soundtrack for the motion picture "Singles".

The second side of the album is chock-full of post-'Mats' gems, ranging from the soft patter of "Black-Eyed Susan" (which was recorded in Westerberg's kitchen with a drum machine) to the raucous and unforgiving "Down Love." Somewhere in between this barrage the listener is



treated to "Something Is Me," an eclectic mass of voices and distortion which parallels the likes of **Iggy and the Stooges**.

Not without mention, *14 songs* is counter balanced by a few ballads which are neatly incorporated into the overall flow of the album, including the vocally outstanding "First Glimmer," one of my personal faves.

It is within reason to state that the demise of **The Replacements** was one of the best things that could have happened to Paul Westerberg.

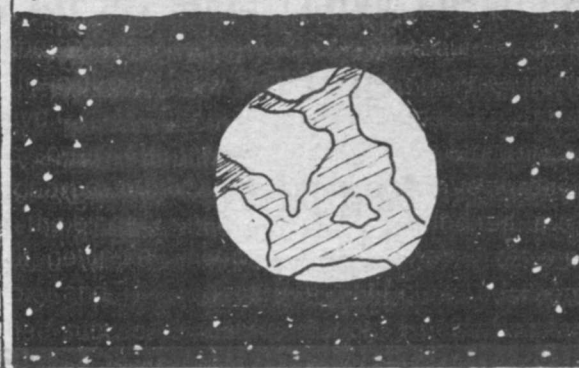
He has conquered his alcoholism and given rebirth to everything he once stood for, all in one fell swoop. To say that *14 songs* is a masterpiece is an understatement - it's one man's salvation.

## WORLD OF PEZ!

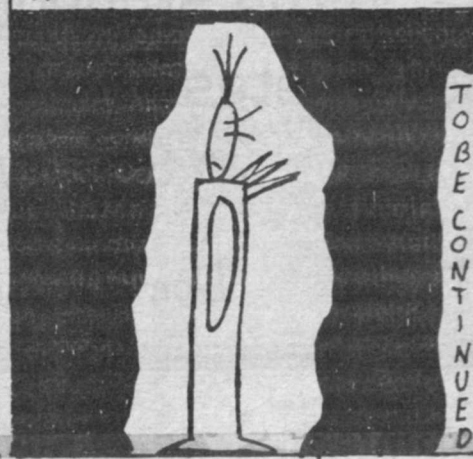
MALACHI'S BEEN GONE  
18 DAYS NOW.



AND YES, I WAS THE ONE  
WHO MADE IT POSSIBLE FOR  
HIM TO LEAVE THIS WORLD  
FOR A BETTER LIFE ON EARTH.



AND YES, I MISS HIM.



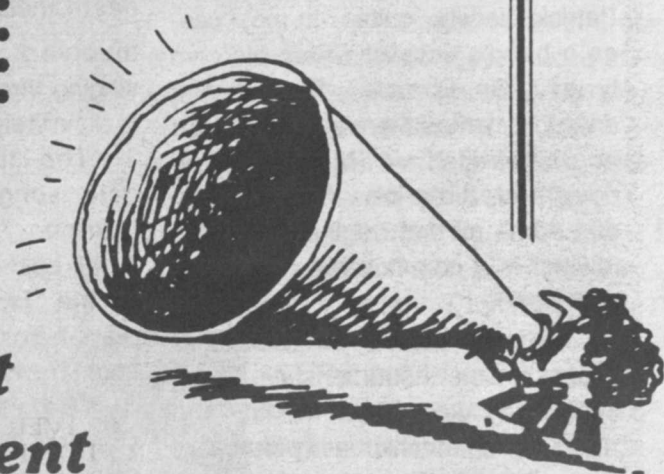
TO BE  
CONTINUED

by Evan Robit



Are you having problems with the school administration?  
Do you have ideas on how to improve the college?  
Do you have complaints about how things are done?  
Then don't just sit there and be an armchair complainer,

.....  
GET UP  
GET LOUD  
GET INTO SGA  
.....



These positions now available:

- Freshman Class President***
- Freshman Class Vice President***
- Freshman Class Treasurer***
- Freshman Class Secretary***
- Senior Class Secretary***
- 3 Club "B" Representatives***
- 1 Club "E" Representatives***
- 1 School of Humanities Rep.***
- 2 School of Management Reps.***
- 2 School of Arts and Communication Reps.***

Nominations open Monday September 13.  
Nominations close Monday September 27.  
Elections held on Tues. and Wed. October 5 & 6  
in the Student Center Lobby 10am-8pm.  
Candidates must sign-in with the SGA Secretary  
in Student Center Room 332.

*Don't just complain, be a part of the solution*



**"THIS IS FILMMAKING AT ITS BEST.**

HERE'S A FILM THAT ENRICHES THE SOUL WITH ITS  
ENCHANTING BEAUTY AND LYRICAL TALES."

-PATRICIA BIBBY, ASSOCIATED PRESS

**"GLORIOUS! UNLIKE ANYTHING YOU'VE EVER SEEN!  
A STRONG CONTENDER FOR ONE OF THE YEAR'S BEST FILMS."**

-JEFFREY LYONS, SNEAK PREVIEWS/CNBC

**"★★★★★ MAGNIFICENT!"**

-BOB CAMPBELL, NEWHOUSE NEWSPAPERS

**"A 10+, REALLY A 13. IT'S DESTINED TO BE  
ONE OF THE BEST AND MOST  
TALKED-ABOUT FILMS OF  
1993 AND THE  
'94 OSCARS."**

-GARY FRANKLIN, KCOP-TV

AN OLIVER STONE  
PRODUCTION

# THE JOY LUCK CLUB

BASED UPON THE NOVEL  
BY AMY TAN

HOLLYWOOD PICTURES presents OLIVER STONE produces WAYNE WANG  
"THE JOY LUCK CLUB" OLIVER STONE JANET YANG directs AMY TAN  
AMY TAN & RONALD BASS based on the novel by AMY TAN  
RONALD BASS PATRICK MARKEY directs WAYNE WANG

R RESTRICTED Strongly Cautioned - Some Material May Be Inappropriate for Children Under 17  
© 1993 HOLLYWOOD PICTURES, INC. ALL RIGHTS RESERVED. HOLLYWOOD PICTURES, INC. IS A DIVISION OF PICTURES GROUP, INC.  
Soundtrack available on Hollywood Records  
HOLLYWOOD PICTURES

NOW SHOWING AT CITY CINEMAS CINEMA 1 3RD AVE. & 60TH ST. MANHATTAN  
STARTS FRIDAY, SEPTEMBER 24 AT SELECTED THEATRES

# Brothers For Awareness

presents

**"Gathering of Black Men"**

September 22, 1993

Science Bldg. 200 B

3:30 PM

All are welcomed  
Refreshments will be served

S.G.A. Funded

Special student  
savings right now

With this, you  
can save for years.

With these, you  
can save right now.



That penny jar on your dresser



Apple Macintosh  
Color Classic™ 480, Built-in 10"  
Color Monitor and Apple Keyboard II  
\$999

Apple Macintosh  
LC III 480, Apple Basic Color Monitor  
& Apple Extended Keyboard II  
\$1313

Apple PowerBook™ 1400 480,  
Built-in Keyboard & 10" Backlit  
Super Twist Monochrome Display  
\$1342

Now, you can get substantial savings on these Macintosh® personal computers. To order yours direct from Apple — and to find out about special student financing with the Apple® Computer Loan™ —

call 1-800-877-4433, ext. 40. Or, visit your Apple campus representative today. And discover the power more college students choose. The power of Macintosh. The power to be your best.



To order direct from Apple or to learn more  
about Apple products and easy financing —  
CALL 1-800-877-4433, ext. 40



# The Psychology behind the Citibank Classic Visa card, and the emotional security of the Photocard.

The Citibank Classic Visa® instills in students feelings of safety, security, and general wellness not unlike those experienced in the womb. Therefore, it is the mother of all credit cards. ¶ Some experts attribute these feelings to the **Citibank Photocard**, the only credit card with your photo on it. A voice inside says, "This is me, really me." (As opposed to, "Who the heck is that?"—a common response to the photo



Subject suffering from Credit Card Theft Nervosa.



Subject after receiving Citibank Classic Visa Photocard.

on one's driver's license.) It's an immediate form of ID, a boost to your self-image. ¶ Of course if your card is ever lost or stolen and a stranger is prevented from using it, you'll feel exceptionally good (showing no signs of Credit Card Theft Nervosa). ¶ Other experts point to specific services, such as **The Lost Wallet™ Service** that can replace your card usually within 24 hours. Or the **24-Hour Customer Service** line, your hotline, if you will, for any card-related anxiety whatsoever. ¶ Further analysis reveals three services that protect the purchases you make on the Citibank

Classic Visa card, at no additional cost. **1. Buyers Security™** can cover them against accidental damage, fire or theft, for 90 days from the date of purchase<sup>1</sup> (preventing, of course, Insecurity). **2. Citibank Lifetime Warranty™** allows one to extend the warranty for the expected service life of eligible products up to 12 years.<sup>2</sup> **3. And Citibank Price Protection** assures you of the best price. You need only see the same item advertised in print for less, within 60 days, and Citibank will refund the difference up to \$150<sup>1</sup> (hence no Post Purchase Depression). ¶ Special student savings are particularly therapeutic. There's the free **Citibank Calling Service™** from MCI to save up to 26% on long distance calls versus AT&T.<sup>3</sup> (You're encouraged to call Mom and Dad regularly preventing Parenta Non-Supportus.) And a **\$20 Airfare Discount<sup>4</sup>** on any domestic flight. (Case studies indicate that a Fear of Flying is overcome when Spring Break in sunny Florida is a possibility.) Not to mention the low variable interest rate of 15.4%<sup>5</sup> and no annual fee for college students. ¶ Suffice it to say, you'll have a credit card you can depend on while building a credit history. So call **1-800-CITIBANK, extension 19**, to apply over the phone (students don't need a job or a cosigner) or to have your photo added

to your Citibank Classic Visa card. ¶ If we say that a sense of Identity is the first component of the Citibank Classic Visa card, a sense of Security the second, and a sense of Autonomous Will from your newfound financial independence the third, don't be crazy...Call.



Not just Visa. Citibank Visa.

## The Monarch® Notes Version:

The Citibank Classic card gives students peace of mind, protection against Freud—or rather fraud—a low rate and no fee. Apply today. Call **1-800-CITIBANK, ext. 19**

<sup>1</sup>Certain conditions and exclusions apply. Please refer to your Summary of Additional Program Information. Buyers Security is underwritten by The Zurich International UK Limited. <sup>2</sup>Certain restrictions and limitations apply. Underwritten by the New Hampshire Insurance Company. Service life expectancy varies by product and is at least the minimum based on retail industry data. Details of coverage are available in your Summary of Additional Program Information. <sup>3</sup>Savings claim is based on a 10-minute night/weekend call in the 1911 to 3000 mileage band using MCI's Card Compatibility rates vs. AT&T's standard calling card rates, effective 4/93. Citibank Calling Service long distance usage cannot be applied to obtain benefits under any other MCI partner program or offer, including travel award programs. <sup>4</sup>Offer expires 6/30/94. Minimum ticket purchase price is \$100. Rebates are for Citibank student cardmembers on tickets issued by ISE Flights only. <sup>5</sup>The Annual Percentage Rate for purchases is 15.4% as of 8/93 and may vary quarterly. The Annual Percentage Rate for cash advances is 19.8%. If a finance charge is imposed, the minimum is 50 cents. There is an additional finance charge for each cash advance transaction equal to 2% of the amount of each cash advance transaction; however, it will not be less than \$2.00 or greater than \$10.00. Monarch® Notes are published by Monarch Press, a division of Simon & Schuster, a Paramount Communications Company. Used by permission of the publisher. Citibank credit cards are issued by Citibank (South Dakota), N.A. ©1993 Citibank (South Dakota), N.A. Member FDIC.



## LETTERS, Continued from page 6

dug the change from the bottom of my pocket and tried calling the school's main number hoping there would be a recording. Then I remembered the number is printed on my ID albeit very tiny. Finally, I got through to campus police. Now we would get something done.

I explained to the officer who answered the phone that I was a student in the communication building and that no lights were on in front of the building. After checking, the officer responded that "they haven't been working for days!" "And....," I said. "I guess we told maintenance," he said. "And....," I said. "I guess they'll fix it" he said. I hung up in utter disgust. Even with this knowledge, for the entire hour I waited, I never saw even one campus police officer.

This is not the only security problem on our campus. Observations have been recently made about the new Hillside dorm and other sites throughout campus.

President Speert, in your letter in the student handbook, you wrote of "Students First." You wrote "with this two word phrase William Paterson



College declares the concept that underlies every activity." You spoke of "the welfare of the whole....," and how we as students believe this statement when at times it seems we are the only ones concerned about our safety. What type of college builds two new buildings in the 20th century and places aesthetics over security? What type of college claims students first and does not include their security in this thought?

I know that these issues are not all new. Some of these complaints you might have heard about before. President Speert, now more than ever, I urge you to take a stand. Make a commitment to making this a campus of students first and safety first. I urge you not to repeat the mistakes of the past and wait until something happens; wait until it's too late.

Yoni D. Greenbaum  
Sophomore

### Campus Activities stands corrected

Editor: The Beacon

I am a Jewish female who is in her fourth semester here I feel that Jewish students on this campus are being discriminated against.

For those who are not aware, in the Jewish religion, the most important holidays are Rosh Hashanah, Yom Kippur, and Shabbat (the Sabbath). Just as Christmas and Easter are important to the Christian students on campus, my holy days are very important to me.

I realize that at this college, the percentage of Jewish students and faculty is fairly low, but I still feel that at a school that preaches multicultural awareness, people are unaware of the Jewish culture.

First, my main complaint, from which I fear some of my other complaints stem, is about the Campus Activities office. Campus Activities produces a Calender of events for the school year. On this calender, the dates of the Jewish holidays are wrong. Rosh Hashanah, which is a two day holiday, started on Wednesday, Sept. 15 at sundown and ended on Friday, Sept. 17 at sundown. All Jewish holidays run from sundown to sundown. The calender had only Sept. 15 marked as Rosh Hashanah. Yom Kippur, the day of atonement, the holiest day of the Jewish year, is marked as Friday, Sept 24 when it actually runs from Friday night to Saturday night. I feel that it is possible that the other organizations that scheduled major events on Rosh Hashanah used this calender as a reference. In this day and age, almost all commercially purchased calenders have all of the jewish holidays written in them, and these major companies tend to get it right.

Second, Campus Activities scheduled the first of their WORD Leadership Series for campus leaders on Friday, Sept. 17, the second day of Rosh Hashanah. Although complaints were raised at the Club Presidents meeting, all we got is a curt apology. No complaint was made by the Jewish Student's Association (JSA) President. I wanted to attend that meeting but couldn't because I'm Jewish.

Lastly, in May every year is the Senior Dinner Dance, a beautiful evening to help the seniors celebrate their graduation. Every year, this dance is on Friday night. Because of this fact, every year there are students who can not attend because of their religious beliefs. Why can't this wonderful event be scheduled for Saturday night? Who would be offended if it was on Saturday night? I already know who is offended by the fact that it is always on Friday night.

I hope this letter will make people stop and think. To the campus leaders: please pay more attention to what is going on around you before you schedule events, you may lose part of your audience if you don't. I know these kinds of concerns have been raised before, and I know they will keep being raised until something is done to change things.

Phyllis Morris  
Senior, Mathematics Major

### Hillside rules stifle study

Editor: The Beacon

I would like to congratulate the college on opening Hillside Hall this fall as scheduled. It

looks great, and will enable 250 more students to reside on campus and get the most out of their college experience. There is a problem, however, with one of the rules that have been enacted along with the new dorm. The rule is that residents going between the Towers and Hillside Hall must sign in after 4 p.m., leaving their ID card at the desk, and leave by midnight, or 2 a.m. on Friday and Saturday nights. This is the same policy for non-resident visitors.

It is my opinion, and of every resident that I have discussed this with, that residents of the Towers and Hillside Hall should be able to walk freely back and forth at all times, only being required to present their key tag upon entering. There is no reason why the policy shouldn't be the same as walking between South Tower and North Tower, which is just presenting your resident key tag.

Despite what the administration may think, resident activity does not cease to exist at midnight, or two in the morning on weekends. A



resident of the South Tower wanting to visit another resident in Hillside Hall shouldn't be any different then wanting to visit the North Tower.

The main point that Resident Life should look at is that very often students study for exams together, and usually late at night. The resident halls are basically the only facilities available for late-night studying. The rule that everyone would like changed does not allow students form different residence halls to study together. The rule basically separates the two dorm facilities, which are only a couple hundred feet apart. It is my hope in writing this letter that the college recognizes its error and allows residents from Hillside Hall and the Towers to freely integrate with each other and put a

Shaun Smith  
Sophomore, Environmental Science

Letters to the Editor are due  
at 5 p.m. on the Thursday  
before publication



# Football notches first victory, 24-19

FROM PIONEERS PAGE 20

Evans went into the endzone untouched for a WPC 9-0 lead. In the second quarter, Taylor broke free from the line deep in TSC territory for an 18-yard touchdown run. Moyer later added a 25-yard field goal for a WPC 18-0 lead.

White finished with 98 rushing yards on 18 carries. Taylor picked up 88 yards on 10 carries, while Evans rushed for 16 yards on 11 attempts.

"I have a lot of confidence in them (offensive linemen)," stated White. "I try to encourage them. I feel that we have the best center (Stockelberg) in the league. They ran hard tonight."

The WPC lead, however, was soon in jeopardy as the momentum quickly shifted. With 4:38 left in the first half, the TSC offense capped a 43-yard drive with a nine-yard touchdown pass from quarterback Ed Walsh to tight-end Joe Orlando. The TSC special teams also responded as a Pioneer blocked punt resulted in a safety, cutting the margin in half, 18-9, at halftime.

Later, in the fourth quarter with the score 24-12, TSC once again blocked a Pioneer punt that put the ball at the WPC seven-yard line. Two plays later, running back Scott Dickson hauled in a nine-yard pass from Walsh in the end zone that suddenly made the score 24-19 with 5:54 left in the game.

Walsh tried to rally TSC with the ball placed on the WPC 39-yard line. But the Pioneer defense denied any possibility of a comeback as defensive linemen Stephan Corrigan and Tom Horner sacked Walsh for a seven-yard loss as the Pioneers prevailed for the victory.

The WPC defense allowed only 146 total yards. "We knew our assignments," remarked linebacker Garven Hadden. "We have to

give credit to (Greg) Lusardi (defensive coordinator) and the rest of the coaches. I think that if everybody plays to the best of their ability, we'll be a good

team." WPC's record stands at an even 1-1. "Overall, the defense did a nice job," said Coach Gal-

agher. " (We're) happy anytime (we) beat a conference team. Trenton State was a very good quality team. It's a good start."

AT&T can  
help you save money  
whether you live  
on campus, off campus,  
or somewhere  
in between.



Choose AT&T and save up to 25%\*.

In four years of college, you'll probably change residences as often as you change majors. Fortunately, if you choose AT&T as your long distance company you can keep up with all the changes in your life and still save money. We offer a variety of savings options that adjust to changes in your calling habits. It's all part of **The i Plan™**. The personalized plan designed to fit the way you call.

To sign up, stop by our booth on campus or call  
1 800 654-0471, Ext. 4119.



\*Savings based on AT&T Simple Savings Plan. © 1993 AT&T

**Unplanned Pregnancy?**



**FREE**  
Confidential Help and  
Pregnancy Test at  
**BIRTHRIGHT**  
456 Belmont Avenue  
Haledon  
956-8215

19 W. Pleasant Avenue  
Maywood  
(minutes from Bergen Mall)  
845-4646





Field Hockey Head Coach Cyndi Gramlich-Covello

# Schlereth sparks squad

By Alexis Noonan  
SPORTS CONTRIBUTOR

The WPC Lady Pioneer field hockey team improved its record to 4-1, by defeating Kings College (Pa.) 1-0, Thursday.

The offense was led by sophomores Collen Schlereth, who scored her second goal of the season, and Theresa McKean (assist), who had an overall outstanding game. Karen Cere and Lora Orta did a nice job on picking up and maintaining possession.

"During the game we sim-

ply made the plays happen," said Head Coach Cindy Gramlich-Covello in her seventh season.

Maureen Harte continued to work on building her reputa-

**"We simply made the plays happen,"-  
Gramlich-Covello**

tion in goal as she recorded the team's third shutout of the season.

"Throughout the season, we are aiming to keep our attack strong and continue to

play well offensively," added Gramlich-Covello.

So far this season, the Lady Pioneers have done just that. Add some excellent goal-tending and defense, and the squad has the chemistry for success.

With upcoming games against conference rivals Rowan College and Montclair, the Lady Pioneers need to keep up their strong play.

"All conference schools will be competitive to face, especially Trenton, Montclair State, and Rowan who play on turf," noted Gramlich-Covello.

## Soccer puts up points

FROM SOCCER PAGE 18

paign. Led by sophomore Emir Yaya and freshman John Horsford, the offensive production and excitement of the team has increased dramatically.

Yaya leads the team in total scoring with seven points; two goals and three assists. Horsford leads the team in goals with three in four games.

In their return to the WPC lineup, junior Mike Yasosky and senior Dan Bartolomeo sparked a 4-2 win over regionally-ranked United States Merchant Marine Academy. The Pioneers next three games were heartbreaking losses to ranked teams: Scranton, Vassar and New Paltz.

## The Beacon needs photo people.

Come to  
SC310 or call  
595-2248.

### PRINCIPLES of SOUND RETIREMENT INVESTING

Monthly Expenses	Income
Rent 775	1915
Telephone 60.32	845
Gas 60	
Electricity 45.68	
Car Loan 240	
Student Loans 175	
Insurance 125	
Credit Cards 165	
Overdraft (CHG) 189	
Groceries 300	
Entertainment 100	
Clothes 50	
Medical 100	
	275

## IRONICALLY, THE TIME TO START SAVING FOR RETIREMENT IS WHEN IT LOOKS LIKE YOU CAN LEAST AFFORD IT.

Can't afford to save for retirement? The truth is, you can't afford not to. Not when you realize that your retirement can last 20 to 30 years or more. You'll want to live at least as comfortably then as you do now. And that takes planning.

By starting to save now, you can take advantage of tax-deferral and give your money time to compound and grow. Consider this: set aside just \$100 each month beginning at age 30 and you can accumulate over \$172,109\* by the time you reach age 65. But wait ten years and you'll have to budget \$219 each month to reach the same goal.

Even if you're not counting the years to retirement, you can count on TIAA-CREF to help you build the future you deserve—with flexible retirement and tax-deferred annuity plans, a diverse portfolio of investment choices, and a record of personal service that spans 75 years.

Over a million people in education and research put TIAA-CREF at the top of their list for retirement planning. Why not join them?

Call today and learn how simple it is to build a secure tomorrow when you have time and TIAA-CREF working on your side.

Start planning your future. Call our Enrollment Hotline 1 800 842-2888.



75 years of ensuring the future  
for those who shape it.™



\*Assuming an interest rate of 7.00% credited to TIAA Retirement Annuities. This rate is used solely to show the power and effect of compounding. Lower or higher rates would produce very different results. CREF certificates are distributed by TIAA-CREF Individual and Institutional Services.



# Money seems to matter most

Running back Emmitt Smith, of the Dallas Cowboys finally signed his name to the dotted line. Smith inked his name to a four-year deal that will pay him \$13.6 million, making him the highest paid running back in the league. I realize he led the league in rushing the past two seasons, but does he really deserve that much? Cowboys owner Jim-

who some critics consider the best goalie ever, better live up to the expectations, after making that deal.

Wayne Gretzky of the Los Angeles Kings, possibly the best player of his time, reportedly has signed a three-year \$30 million deal! If this is true, it would make him the highest paid professional ath-

League history to accomplish the feat. Winfield is only the fifth player to reach 3,000 hits, 450 home runs, and 1,750 runs batted in. Incredible!

Richard Dumas, of the Phonix Suns, was suspended

indefinitely without pay by the National Basketball Association for violating his substance-abuse rehabilitation.

Dumas missed the 1991-92 season and parts of last year after failing a random drug test. What is he thinking? He is

a player in the NBA, and he is throwing it all away for drugs. I wish I could have his salary for one year--one game even! He better get his head on straight before he loses it all!

## Hot Dogs and Beer

with  
*Brian Yaworski*

my Jones must think so.

Staying with contract signings, Patrick Roy of the Montreal Canadiens signed a four-year \$16 million contract. That makes him the highest paid goaltender in the league, and third highest overall, behind Mario Lemieux of Pittsburgh, and Eric Lindros of Philadelphia. Roy,

lete ever. Now I know he was "the Great One," but \$30 million? I guess they are making up for his first ten years in the league. Thirty-million dollars?!

Minnesota Twin, Dave Winfield, set a milestone this past week by collecting his 3,000th career hit. He is only the 19th player in Major

## Soccer getting its kicks

By JoAnne Mabes  
SPORTS CONTRIBUTOR



Soccer standout Emir Yaha

Like the mythological Phoenix that rose to become a great bird once more, the WPC soccer team is trying to rise to the great tradition and success it has previously enjoyed. Though the Pioneers' record going into last week was 1-3, tremendous strides have been taken which brings an optimistic outlook to the future.

Head Coach Brian Woods, in his second year, has built this optimism by bringing in a host of young and talented players. Already this year, the team has scored more goals than in all of the 1992 campaign.

SEE SOCCER PAGE 17

# FSU fights for championship

By Eric Wishnow  
CONTRIBUTING COLUMNIST

The 1993 college football season is moving into high gear as Florida State, Alabama, and Miami of Florida battle for the number one spot. Before the season becomes an all-out war, here is who I think will be the top five teams at the end of the year.

Leading the way are the powerful Florida State Seminoles (3-0), who have won ten or more games and finished in the top five for eight straight seasons. The Seminoles are led by Heisman Trophy candidate, quarterback Charlie Ward, and wide receiver Tamarick Vanover.

Even though FSU plays the toughest schedule in the country, with road games against the University of Florida and Notre Dame and a home game against the University of Miami, look for the Seminoles to be playing for the national championship on January 1, 1994.

Florida State has been so dominant against their first three opponents, proven by the fact that linebacker Derrick

Brooks has scored more points than the opposing offenses. Brooks has scored three touchdowns, while Kansas, Duke, and Clemson have combined for one.

The defending national champions University of Alabama (2-0) have continued to dominate from the point where they were at the end of last year. Once again the Crimson Tide are led by a ferocious defense anchored by cornerback Antonio Langham, and linebacker Lamanski Hall.

Many people think this defense will be the best in the nation again. Should they have an off day, look for quarterback Jay Barker, 19-0 as a starter for his career, and flanker David Palmer to create some excitement.

The University of Miami (1-0) will finish third in what is being called a rebuilding year by many. Don't be fooled by these suggestions.

Led by Frank Costa, who will continue Miami's proud tradition at quarterback, the Hurricanes will run wild on opposing defenses. In their season opening victory on the road against a very good Boston

College team, Miami racked up 390 yards on offense and the defense held B.C.'s offense in check all day.

The Orangemen of Syracuse (2-0) will finish fourth because of an explosive offense that can put points on the board from anywhere on the field. With quarterback Marvin Graves having a tremendous season, the Orangemen offense is well set.

Add a player with the speed of a rocket, Shelby Hill, and a runner with the power of a truck, Terry Richardson, and this offense then becomes lethal.

Rounding out the top five are the always dangerous Notre Dame Fighting Irish (2-0). This claim was never more evident than in their 27-23 upset victory over the highly-touted Michigan Wolverines.

Mike Miller shocked a record crowd of 106,851 at Michigan Stadium on a 56-yard punt return that set the wheels spinning for a Notre Dame victory. If the play of quarterback Kevin McDougal continues to improve, look for the Fighting Irish to make a strong dash toward the top.

The race for this year's Heisman Trophy is under way, and the field is the strongest one in recent memory.

**RB Marshall Faulk, San Diego State:**

Faulk, last year's runner-up, is the type of runner who can turn a five-yard loss into a 75-yard touchdown. In his previous two seasons, Faulk has led the nation in rushing. Although he is off to a slow start, look for him to do the same this season if he can remain healthy.

**QB Charlie Ward, Florida State:**

Going into the season, Ward was recognized as the early season favorite by many experts. With his showing in the first three games, Ward has clearly shown why he deserves this accolade. So far, Ward has a 70% completion rate, 783 yards and six touchdowns passing, and a 5.7 yard average with one touchdown rushing.

**RB Tyrone Wheatley, Michigan:**

Wheatley put his name in

the race with a spectacular game against Notre Dame. All he did was rush for 146 yards and two touchdowns, catch three passes, and return four kickoffs for 135 yards. Not bad for 60 minutes worth of action.

**QB Marvin Graves, Syracuse:**

Graves passed for two touchdowns and rushed for three at East Carolina, putting him very much in the hunt. For the season, Graves has thrown for 553 yards and five touchdowns, while rushing for a 7.9 yard average and three touchdowns.

**QB Steve McNair, Alcorn State:**

McNair is this year's sleeper pick. In his first two seasons, he has thrown for 6,432 yards and 53 touchdowns. In a game against Texas Southern this year, McNair had 424 yards passing and five touchdowns.

When the Heisman is announced in December, expect Ward to win and to be followed by Wheatley, Faulk, Graves and McNair.







# Beacon Sports

September 20, 1993 • WILLIAM PATERSON COLLEGE

*Big money signings*

*Soccer makes strides*

*Field Hockey finds chemistry*

## Pioneers show a 'new look'

### Players step up for WPC, beat TSC

By Joe Ragozzino  
CO-SPORTS EDITOR

An important lesson was learned after last Friday's game between the WPC football team and Trenton State: the inexperienced will become experienced.

During the bye week, Head Coach Gerry Gallagher and his staff were faced with serious questions concerning the expected performance of the Pioneer offense that consisted of an untested quarterback, a rebuilt offensive line, and two young running backs. But the questions were immediately answered as the "new look" WPC offensive unit keyed a 24-19 victory before a capacity home-opener crowd at Wightman Field.

To the delight of Coach Gallagher and his squad, junior quarterback Matt Baldwin, the offensive line (senior guard Ed O'Melia, junior tackle Michael Patterson, junior center Michael Stockelberg, sophomore guard Charles Damato, and freshman tackle Joseph Yeghen), and sophomore running backs Andre Evans and Andre Taylor ~~exceeded~~ all expectations against one of the toughest teams in the New Jersey Athletic Conference. With an excellent second-time effort, these players are quickly drawing a lot of attention after securing the first win of the 1993 season for WPC.

Although Baldwin, who

called the signals in place of injured starter Rich Smith, completed two passes on 10 attempts for 71 yards and a touchdown, Coach Gallagher was quite pleased with his ability to engineer the offense.

"He (Baldwin) was outstanding," commented Coach Gallagher. "He made great decisions for us and was able to help chew up the clock. He did a great job."

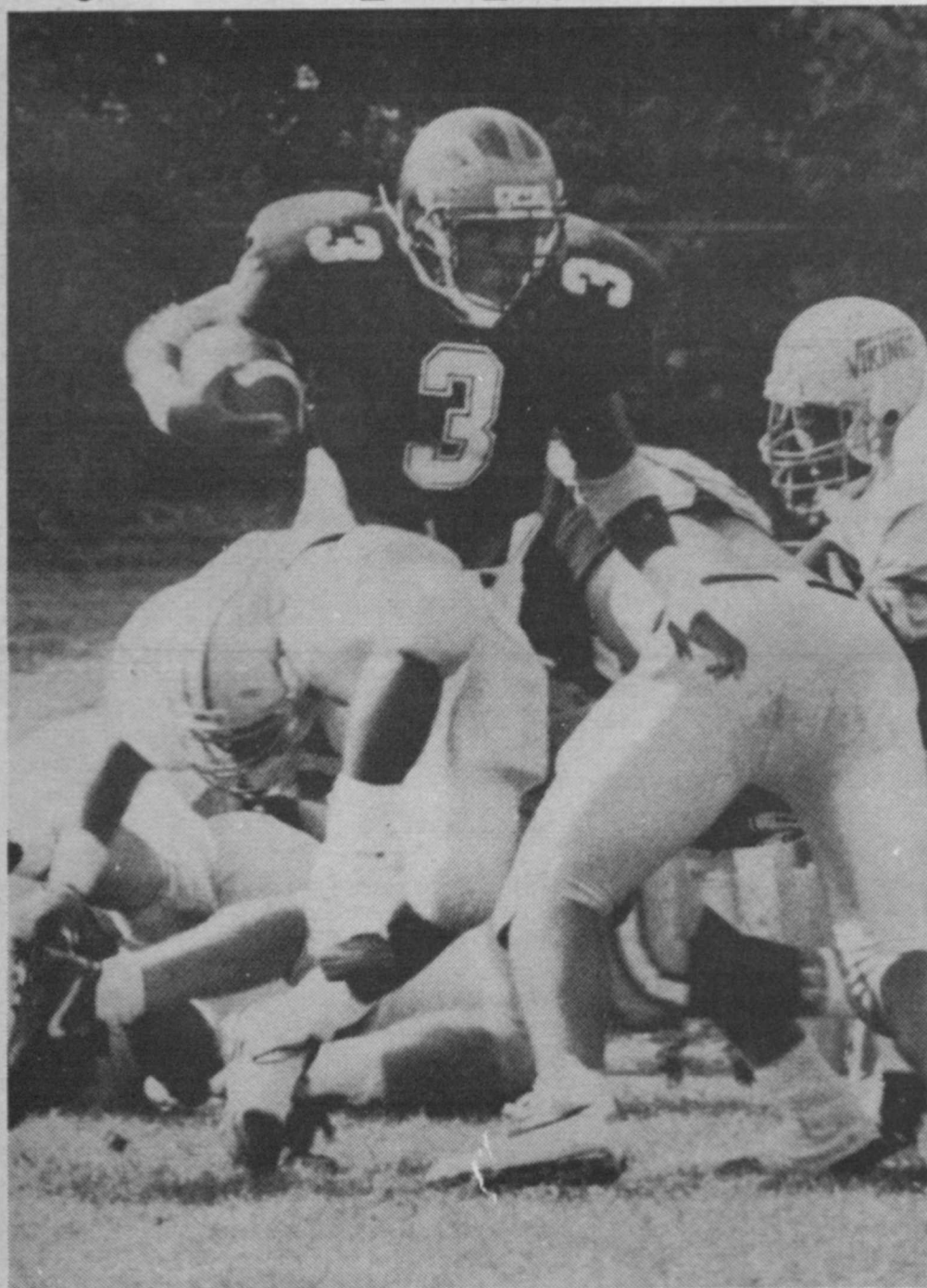
Baldwin's touchdown pass came at a key moment in the game. With the Pioneers clinging to an 18-12 lead at the start of the fourth quarter, Baldwin, on a play-action fake, connected down the middle to senior running back Kevin Harmon, who outran the TSC defense for a 60-yard scoring play. Place-kicker John Moyer's extra point was no good, but WPC extended its advantage to 24-12.

"I got behind the secondary, and Matt threw a perfect pass right on the money," reflected Harmon on the touchdown strike.

The Pioneer offensive line won the battle of the trenches, enabling senior running back Al White, Evans, and Taylor to rush the ball effectively.

After Moyer opened the scoring with a 24-yard field goal in the first quarter, White, on third and nine at the TSC 21-yard line, took an end-around pitch and rushed to the two-yard line. On the next play,

SEE FOOTBALL PAGE 16



Pioneer running back Al White (3) high-steps through an opening during Upsala game last season.

## PIONEER SPORTS WEEKLY PLANNER

### Football

vs. Western  
Conn.  
Fri., Sept. 24 (H)  
7:30 p.m.

### Field Hockey

vs. Rowan  
Tue., Sept. 21 (A)  
4:00 p.m.  
vs. Manhattanville  
Thur., Sept. 23 (H)  
4:00 p.m.  
vs. Montclair St.  
Sat., Sept. 25 (H)  
1:00 p.m.

### Volleyball

vs. Montclair St.  
Tue., Sept. 21 (H)  
6:00 p.m.  
vs. West. Conn.  
Thur., Sept. 23 (H)  
6:00 p.m.  
vs. Mt. St. Mary's  
Sat., Sept. 25 (A)  
noon

### Soccer

vs. Dominican  
Wed., Sept. 22 (H)  
7:00 p.m.  
  
vs. Ramapo  
Sun., Sept. 26 (H)  
2:00 p.m.

### Baseball

vs. FDU  
Sat., Sept. 25 (H)  
noon  
  
vs. Montclair St.  
Sun., Sept. 26 (H)  
noon