

shining on the college community for more than 55 years

# The Beacon

August 30, 1993 • WILLIAM PATERSON COLLEGE

## New "sites" around campus

By Rande Bayer-Spittel

NEWS EDITOR

The summer has brought with it some new sights to the WPC campus. Some old construction work is finished, some new construction has begun and a shuttle bus will begin to make rounds on the campus this fall.

The library renovation, to add study space, is proceeding on schedule according to Timothy Fanning, assistant vice president of administration and finance.

The audiovisual department has been moved to the Hobart Hall Annex; cataloging/collection development is now on the top floor of Hunziker Wing. Periodicals and the library offices have been relocated to Wayne Hall. All other library functions including circulating materials have been put on the second floor of the library.

Construction is expected to last another 16 to 20 months. A shuttle bus will be serving the campus this year. It will

operate Monday thru Friday 7:45 am to 5:00 pm.

Stops on campus have been designated, but according to Fanning, "they may be adjusted during the year to better accommodate those using the bus." The stops are currently located at: the Rec Center, ground floor of Ben Shahn Hall near the tennis circle, Veritans parking lot near the shelters, Gate 2 on Pompton Road, Gate 3 on Pompton Road, Parking lot 5 at Wayne Hall, and at White Hall. There is no set time schedule as the bus will be making continuous loops around the campus.

Renovations were also done in the Student Center. The Student Government Association's office space was expanded to include rooms 332 and 333. Another addition to the Student Center is a Taco Bell fast-food stand that has been added on the first floor where Pioneer Gear used to be located. Students with meal plans will be able to use their meal plan



Sarah Bird Askew Library under construction

cards there, in the commuter cafeteria and at Billy Pat's Monday thru Friday for lunch and dinner.

Construction crews have been busy finishing the new dorm, Hillside Hall, as well as completing renovations to the Wayne Hall dining facility, including new furniture and fixtures.

Hobart Hall is open and ready for fall classes. An opening ceremony will be held on September 22. Another noticeable change is the recent painting of the water tower that overlooks the campus.

One construction project that didn't get started over the summer was that of a new academic building to house the

budget so the contract was not awarded. We are talking to the architect," Fanning said. In the meantime, Parking Lots 3 and 4, as well as Gate 4 will remain open as construction continues throughout the year.

## SGA gears up for Fall

By John F. Gillick

ASST. EWS EDITOR

The Student Government Association has been busy this summer both changing and expanding its operations.

The offices of the SGA have been expanded to include Rooms 332 and 333 in the Student Center. The additional space will allow the SGA to put its new computers in their offices. The new offices will also include a conference room with a television and VCR that will be hooked up to satellite.

The SGA summer legislature passed \$26,500 for a four work station, upgradable computer system. The system will have graphic capabilities including the ability to do resumes and flyers, according to Daniel Cimmino, SGA president.

The SGA summer legislature also passed a \$15,000 grant to the college to build outdoor basketball and volleyball courts. "This is something that students requested two years ago. The Rec Center will be taxed with the new residents

also using it," Cimmino said.

\$1,500 was passed for a promotional video for the SGA to be used during Orientation. The video was completed by Romney Video, a company run by WPC alumnus Terrence Romney.

An SGA picnic has been planned for the fall as well as the spring, Cimmino said, and the SGA retreat will occur October 1 and 2. A Club Fair has also been scheduled for Wednesday, September 15, in the front of the Student Center from 11:30 a.m. to 3:00 p.m..

Executive Vice President Eda Ferrante has been requesting donations from corporations for this year's SGA-sponsored holiday party for local orphans.

Cimmino went to the WPC Board of Trustees to ask for an increase in the Student Activity Fee but was turned down because of the SGA's \$130,000 reserve. He plans to request the increase again once the SGA has stabilized its reserves at \$100,000.

This year Legislators will be required to spend one hour a

week in the SGA office to be available to the students who wish to voice their opinions and concerns.

The Student Government office is located on the third floor of the Student Center. Currently the Executive Board's office hours are by appointment only, call 595-2157.

The next issue of **The Beacon** will be out on September 13.

SAPB (Student Activities Programming Board) is the major programming organization at WPC, providing social, cultural, recreational and educational activities. It is open to any WPC student. Whatever your interest or major, there is something here to interest you!

## Committees

Advertising  
Daytime  
Lectures

Cinema  
Entertainment  
Multicultural

Concerts  
Festivals  
Travel

## We Do It All !!

Trips  
Comedians  
Dances  
Bands  
Spring Break Trips  
Outside activities  
Controversial speakers  
Movies  
Psychics  
SPRINGFEST

## 1993/94 Highlights

### Welcome Week:

9/13 - "Cliffhanger" 9pm \$2 Billy Pat's  
9/14 - Welcome Week Jam - Music & Comedy  
8pm Shea \$3-WPC stds \$5 public \$5 at door  
9/15 - Virtual Reality Game, Lawn All day  
Recruitment Jubilee 5pm SC213  
9/17 - Bronx Zoo \*See calendar for specific info

### Plus...

Friday Night Live Comedy shows...Trips to Maury: Povich,  
New York City, San Genaro Festival...Haunted Hayride...  
Snowball Dinner Dance (Dec.3) &  
Tuesday Movies: The Firm, Sleepless in Seattle, What's Love  
Got to Do With It, Made in America, In the Line of Fire, & more...

Student Center Room 303 595-3259  
Meetings: Wednesdays 5pm SC 213  
All are welcome!

SGA Funded

# While you were away:

## CAMPUS CHANGES

- The new dormitory, Hillside Residence Hall, will open its doors to 250 students this fall.
- Work on expanding Sarah Byrd Askew Library has begun and the Library will function in four different sites during construction: Wayne Hall, Hobart Hall, the second floor of the Library, and the top floor of Hunziker Wing.
- The campus water tower has been recently painted.
- Wayne Hall has been remod-

eled.

- Handicap access to Hunziker Hall is currently being constructed.
- Progress on the new academic building has been stalled and Parking Lots 3 and 4 will remain open.
- A new recycling program is to be instituted this fall. Yellow containers are for paper and blue containers for aluminum cans.
- Students looking for a change from cafeteria food can now use their credit at the new

Taco Bell fast-food stand and in Billy Pat's (both are located in the Student Center) for lunch and dinner on Mondays through Fridays.

## APPOINTMENTS

- Dr. Beverly H. Bonaparte as Interim Dean for the School of Science and Health for 1993-4. Her office is located in the Science Building, room 317 and her telephone extension is #2193.

- Dr. Henry A. Gardner as Assistant Vice President for Minority Education. His office is in the Coach House, room 204 and his phone number is 595-3103.
- Mr. Lester McKee as Academic Coordinator, Office of Minority Education. His office is in the Coach House, room 205 and his telephone extension is #3151.
- Dr. John Riismandel as Director of Continuing Education. His office is in White Hall, room 221 and he can be

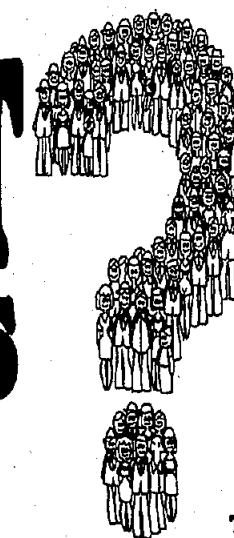
reached by phone at extension 2461.

## IN MEMORIAL

- Two faculty members passed away this summer, Richard Jaarsma, a professor of english, and Mary Ellen Kramer, the director of community affairs. Their contributions were many and their losses will be felt by all.

# WHY WAIT IN LONG LINES

IT'S WORTH THE TRIP TO...



## PIONEER BOOK EXCHANGE

THE  
WPC  
ALTERNATIVE  
BOOK  
STORE

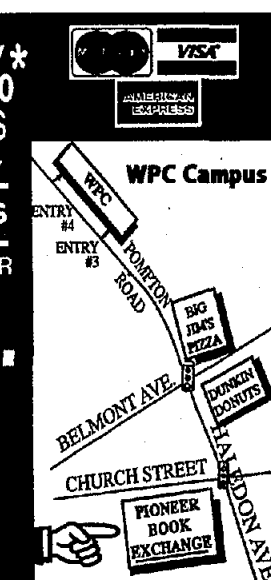
**SAVE 5%\*** **SAVE 25%\***  
ON NEW BOOKS ON USED BOOKS

\*Discount Applies to Cash & Check Purchases Only • No Charge Orders

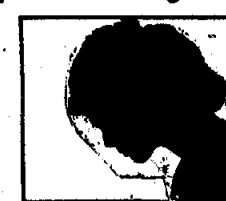
**EXTENDED HOURS**  
FIRST 2 WEEKS OF THE SEMESTER

**481 Haledon Ave.  
Haledon, NJ**

**WE PULL  
YOUR BOOKS FOR YOU  
JUST BRING COURSE  
NUMBER**



## Unplanned Pregnancy?



**FREE**  
Confidential Help and  
Pregnancy Test at  
**BIRTHRIGHT**  
456 Belmont Avenue  
Haledon  
956-8215

19 W. Pleasant Avenue  
Maywood  
(minutes from Bergen Mall)  
845-4646

## WPC HAS IT'S OWN

**SUB  
NOW OPEN**

179 HAMBURG TPK.  
(Next to 7-11 corner of  
Ratzer Rd)

**Only  
99¢**

Buy any Footlong Sub and  
22oz. drink and get one  
Regular Footlong Sub of  
equal or lesser price for 99¢  
Offer expires 09/30/93  
One coupon per customer per visit. Not  
valid with any other offer.

# HALEDON GRILL

472 Haledon Ave, Haledon  
1/4 mile down Pompton Rd. 1 block from Dunkin' Donuts.



942 - 5151

**DELIVERY**  
Lunch and Dinner till 9pm

Choice of Hot Dog or burger  
with Fries & Soda \$2.99  
Choice of Philly steak, Roast Beef or Chicken Filet  
with Fries & Soda \$4.49  
Breakfast --> Bacon or Taylor Egg \$1.59

# A Letter from the Editor

By Pamela Johnson

As I was moving into my dorm room this August, I began to think about how I felt when I first moved in as a freshman. It was exciting, fun, disappointing and frankly, it felt a lot like camping out for a while. Maybe those goofy orientation name games did help a little, but I suppose they just don't cut it if things aren't going well. However, I eventually discovered lots of interesting people on my own who felt the same way I did. Some of those people I am still close with today, some I just remember fondly. There's a few I'm still trying to forget.

Even those students who are confident that they made the right career choice may change their mind as a result of the growth they experience in their college years. Although the transition from home to college (or from high school to college) can be very shocking, most of the problems that the transition entails will not greatly effect anyone's future. Actually, they are inconsequential in comparison to the larger and more important changes that a person will go through as his or her horizons are broadened by education. These changes are different for everyone and personal growth is equally subjective, therefore this column

isn't going to tackle any further discussion of them. All I can say is that, one way or another, they will happen.

In the long run, bad roommates, a difficult commute, lousy food, and parking problems may make life here a lot more difficult, so try to remember that all of those problems won't really matter after college so don't let them interfere with the tremendous growth that college will hopefully bring.

Ideally, this column would be irrelevant. I hope many freshman skimmed over this and thought it didn't apply to them.

*The Beacon welcomes the class of 97' and prints this orientation schedule with hopes of being of assistance.*

## Monday, August 30

Resident Move-in  
9:00 a.m.-2:00 p.m.

Lunch

Parent Orientation  
2:30 p.m.-4:30 p.m.  
in Shea Auditorium

Residence Life Orientation  
2:30 p.m.-5:00 p.m.

Dinner (resident students)  
5:30 p.m.-7:00 p.m.  
in Wayne Hall

Evening Social for Residents  
8:00 p.m.-10:00 p.m.  
in Towers Pavilion

## Tuesday, August 31

Breakfast (resident students)  
7:30 a.m.-8:30 a.m.  
Wayne Hall

Orientation Check-In 9:00 a.m.  
in the Student Center Ballroom

Greetings  
9:45 a.m.-10:15 a.m.  
Shea Auditorium

"Beer, Kicks and College"  
10:15 a.m.-11:15 a.m.  
in Shea Auditorium

Orientation Groups Assemble  
with Leaders  
11:30 a.m.-12:15 p.m.

Lunch 12:15 p.m.-1:30 p.m.  
Wayne Hall

"Everything You Always Wanted to  
Know About Sex But Were Afraid  
to Ask"  
1:45 p.m.-2:45 p.m.  
in Shea Auditorium

"Journey Into the Unknown"  
3:00 p.m.-5:00 p.m.

Dinner 5:30 p.m.-7:00 p.m.  
Wayne Hall

"Madness 'till Midnight"  
7:30 p.m.-12:00 a.m.  
Student Center Ballroom

## In case you were wondering...

-Letters to the Editor are accepted until 5:00 p.m. on the Thursday before publication. Letters are printed at the discretion of the editors.

-Advertisements are also due 5:00 p.m. on the Thursday before publication. If there is a problem, speak to the Advertising Manager or the Editor-in-Chief

-The Beacon needs writers. No experience necessary. Write news sports or entertainment. Call 595-2248 or come to our weekly meetings. The first will be at 3:30 in student Center 310 on Tuesday, September 7 and every Monday thereafter.

**The Beacon**  
Founded in 1936

Pamela Johnson  
Editor-in-Chief

News Editor  
Randee Beyer-Spittel

Asst. News Editor  
John F. Gillick

Copy Editor  
Keith Markussen

Insider Editor  
Mike Garry

Sports Editors  
Joe Ragozzino

Photo Editor  
Karen Bocht

Staff Writers  
Joe Brennan  
Walker Elliott  
Lorrie Pannullo  
Domènec Stampone  
Andrew Scott  
Shell Rosa

Staff Photographer  
Joshua Smith

Staff Columnists  
Albert Stampone  
Brian M. Yaworski

Business Manager  
Dino Stampone

Advertising Manager  
Shaya Ansari

Design Director  
Joshua Smith

Illustrator  
Brian Lynch

Circulation Manager  
Ari Saperstein

Advisor  
Tina Leshar

Business Advisor  
Barbara Stamber

The Beacon of William Paterson College is published by the students of William Paterson College of Wayne, New Jersey 07470, with editorial, production and business offices in room 310 of the Student Center. Newspaper content represents the judgment of The Beacon staff in accordance with The Beacon constitution and does not necessarily represent the judgment of the Student Government Association, the administration, faculty or the State of New Jersey. Opinions in signed columns and letters to the editor are not necessarily the opinion of the staff. This paper is independently funded. Editors can be reached by calling 201-595-2248 or 201-595-3264.

THE INSIDER  
IS  
UNDER  
CONSTRUCTION  
FALL  
PREVIEW  
PAGE 6



# Fall has culture and fun in store

By Mike Garry  
INSIDER EDITOR  
AND  
Dawn M. Marecki  
INSIDER EDITORIAL ASSISTANT

Once again we're back at the beginning. With a new semester ahead, we, your gatekeepers promise to keep you abreast of what's happening on campus and off.

The Insider will have a new look which will take form in our early issues. We are in the process of working on a jazzy new logo and a tight layout. We hope to appeal to students and faculty alike. Veterans and newcomers (Hint, Hint) will work together to bring The Insider to a new level of excellence.

Reviews of summer concerts, album releases and movies will appear in our early issues to recap what, for some, was a memorable season. With bands like Van Halen, Blind Melon, Cypress Hill and Smashing Pumpkins, not to mention "Lollapalooza '93" dominating stages across the country and Tom Hanks, Jurassic Park and Jason Vorhees' demise scoring big box office bucks there will be plenty to comment on.

Fresh from her semester in L.A., Dawn Marecki will fill you in on the West Coast music scene and offer a

comprehensive view of what the area has to offer.

In addition, we'll offer new columns this semester dealing with style and fashion as well as campus life. You can also look forward to more comprehensive coverage of on-campus events, and the latest in entertainment and leisure.

Speaking of on-campus events the 22nd season of the Midday Artists Series makes its return to WPC. On the schedule for Midday Artists is a series of international performances to run from September 9 to November 4 and January 27 to March 24.

On September 9 members of the New Millennium Ensemble will perform compositions for trio by the likes of Beethoven, Brahms and contemporary composer Bradley Lubman. The concert will be held at Shea Center and will begin at 12:30pm.

Also slated to perform are internationally acclaimed Rotterdam Percussion Ensemble who will be in residence on campus the first week of November and will perform on the fourth.

In other campus music news Jazz Room kicks off October 10 and will continue through November 14. "Spanky" Davis gets it all off to a great start on the tenth at 4 p.m. in

Shea Auditorium.

Information on these and other events including performances by The Wayne Chamber Orchestra is available by calling 595-2371.

It will be a busy year at Ben Shahn Galleries with the art spotlight on New Jersey artists and contemporary painting and sculpture. Group and single artist exhibits will be on display all year long starting with "The Foundation Show," an exhibit featuring WPC art students. "Foundation" runs daily from September 7-17 at Ben Shahn.

The popular lecture series "Art at Lunch" will focus on 19th Century American painting this year. These events will also be held at Ben Shahn. For more information call 595-2371.

WPC's Theater Department has a full schedule ahead of them this year. Productions in the works include Victor Gialanella's adaptation of Mary Shelley's *Frankenstein*, Frank Galiano's adaptation of Steinbeck's classic *Grapes of Wrath*, Jo Carson's stirring drama *Daytrips* and *Zooman and the Sign* by African-American playwright Charles Fuller.

The season begins at Hunziker Theater October 19 as WPC Theater presents *Suicide in B-Flat* by Sam Shepard. The *New York Times* pre-

viously hailed this "bizarre" comedy as "Mr. Shepard at his most tantalizing," this is an event not to be missed. Again, for more information call that magic number 595-2371.

Be sure to check out Student Activities Programming Board (SAPB) sponsored events that, in the past, have included various festivals, concerts, travel, multi-cultural events, Springfest and a comedy performance by Adam Sandler of "Saturday Night Live".

Scheduled events already include a viewing of Sylvester Stallone in *Cliffhanger* on September 13 at Billy Pat's and "The Welcome Week Jam," that promises music and comedy, will be held at Shea Center Sept. 14.

WPSC, the campus radio station, (88.7 FM) will feature a Back to School Special on "Night Talk", WPSC's longest running public affairs show. The special edition will feature College President Arnold Speert to discuss college progress and welcome the freshman class to campus.

We can also look forward to various events and activities from Greek Senate, Music and Entertainment Industry Student Association (MEISA), as well as our various cultural and special interest clubs.

## Personals

Imelda—how do you walk around here barefoot? I could never bare all the wax that I suppose would get in between my nice little toes. Yuk, Pooh.

Kleth—come out come out wherever you are! We want you back, now! Love, Beacs

Karen—where have you been? We need you! Love, Beacs

Garry—It's great to have you back with us, the few of us there are. I decided to call you Garry because everyone else does it—so why can't I? I won't always do it because I can remember your first name. Really, I can, I think. Campfire Eyes

Squish—we're glad you didn't

drop dead from our meal together. It's good to have you back. For a while there we thought we lost you. Love, Chief

Quarter-Hunter, Red, ...Belly—I love you and am hopeful for a long, and loving relationship. You are as beautiful today as the first day I saw you. Find any quarters

laying about? Squishle

ElMo. believes in fortune cookies and fireworks. ElMo. likes to make music and pictures and things. ElMo. is everybody and no one, your best friend and your best friend's best friend. ElMo. breaks free in '93.

## Classifieds

NTE Tutoring Also SAT's—English, Math, other subjects and study skills. Experienced, certified, caring teacher. Excellent references. Call 447-4839.

Furnished Room—with kitchen privileges. Females only. \$110 per week. Within 5 minutes of campus. Call 942-0861.

Child Care—part time, flexible daytime hours, 4 year old boy and baby girl. References required. Call 694-0651 after Sept. 3.

Babysitter Wanted—2 mornings per week for 2 small children. Must have good references. Wayne area. 942-7622

Student Needed—to help with autistic child. Conscientious energetic student needed to assist us with adorable 8 year old boy with mild autism (communication handicap). Help needed for number of hours on Sat. and Sun. (Would consider weekdays as well.) Must drive. 839-6146

Masseuses Wanted—Experienced or will train. Excellent opportunity-flexible hours. Knead extra income? Our salaries will rub you the right way! Call 628-4545.

We Need Writers—No experience necessary. We will help you develop the writing, computer and journalism skills. These skills can be a great help when looking for work after graduation, not to mention that having newspaper experience is a great way to beef up your resume. Simply put, The Beacon needs writers. Write news, sports or entertainment. Call 595-2248 and ask to speak to an editor. Our weekly meetings will begin Tuesday, September 7 at 3:30 in Student Center 310 and every Monday thereafter, same time and place.

Typesetters Wanted—must be available on weekends. If you can type fast, this is a great way for you to earn some extra cash. Call The Beacon at 595-2248.

**PREGNANT?  
NEED HELP?**

WE CARE.  
CALL US.  
423-9499  
Abortion  
Action  
Alternatives

FREE PREGNANCY TESTING  
AND COUNSELING  
1120 GOFFLE ROAD  
HAWTHORNE, NJ 07506



HE LOVES ME

The Beacon is pleased to announce that we will soon be acquiring new computers that will help us better serve the campus community. We are glad to express our abundant gratitude to the WPC Alumni Association. We would not be able to take this giant step forward without the association's generous support.

Big Jim's

942-9500

William Paterson College

Big Jim's Family Restaurant and Pizzeria offers to all students

Free Delivery\* on Campus anytime, or if you choose to pick up or drive in we offer a 10% discount on the whole menu (with proper ID)\*\*. Any delivery over \$20.00 will also be entitled to a 10% discount including free Delivery.

Monday & Tuesdays are Student & Faculty Days

Either pick up or dine with us and you are entitled to a 15% discount on your order. (with proper ID.)\*\*

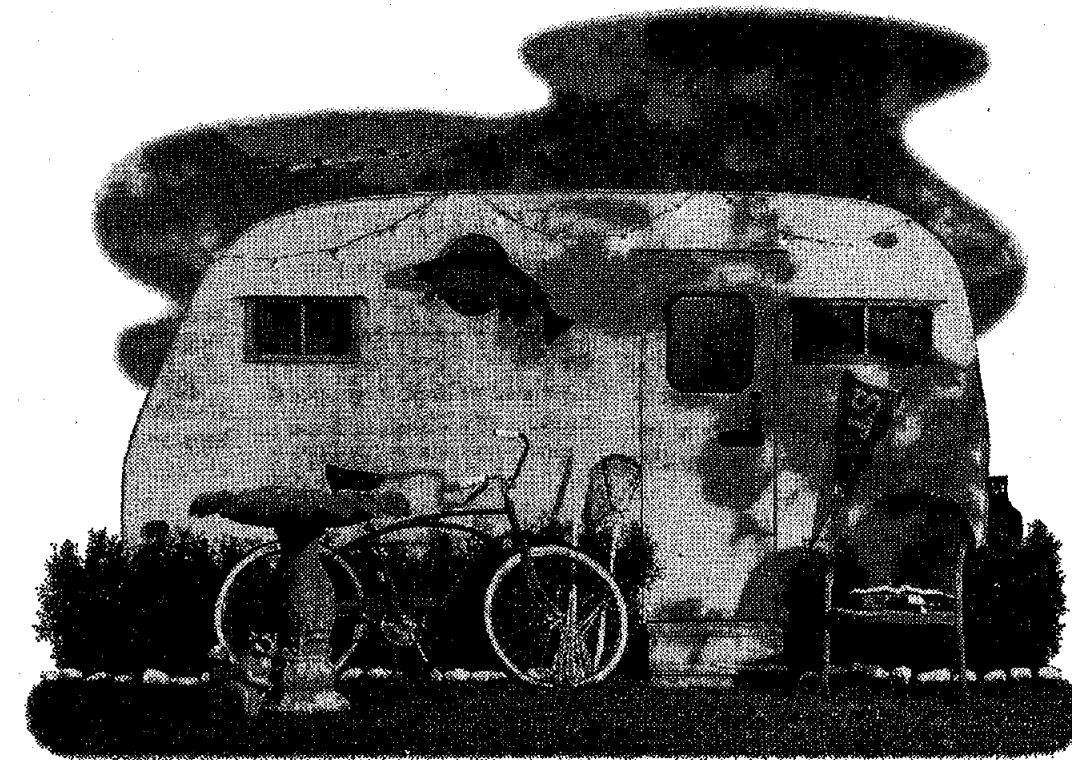
\*only on orders of \$5.00 or more

\*\*Discounts and special offers can not be combined

<p>Pick up only</p> <p>Large Pie Reg. 7.65 + tax</p> <p><b>\$4.99</b> +tax</p> <p>Plain pie only</p> <p>expires: 10/15/93 can not be combined with any other offer</p>	<p>Pick up only</p> <p>Med. Pie Reg. 7.65 + tax</p> <p><b>\$2.99</b> +tax</p> <p>expires: 10/15/93 can not be combined with any other offer</p>	<p>Pick up only</p> <p>Buy any one Sub at the reg. price and get a Free litre of Soda</p> <p>expires: 10/15/93 can not be combined with any other offer</p>
<p>Pick up only</p> <p>Get 2 lbs of Big Jim's very own Hot Wings for <b>\$5.99</b> +tax</p> <p>Reg. - 11.98 +tax</p> <p>expires: 10/15/93 can not be combined with any other offer</p>	<p>Pick up only</p> <p>Buy any Large Pie at regular price and get a free topping &amp; a litre of soda a savings of \$3.18</p> <p>expires: 10/15/93 can not be combined with any other offer</p>	<p>Big Jim's Est. - 1979</p> <p>Located at 1 West Haledon Ave just 2/5 mile east of Gate #1. We are proud to serve you &amp; wish you a happy &amp; successful year of Learning at W.P.C.</p>

1 West Haledon Ave.  
Haledon, NJ  
Mon-Sat 11am- 12midnight  
Sundays 11am - 11pm  
OPEN 7 DAYS

# AT&T can help you save money whether you live on campus, off campus, or somewhere in between.



Choose AT&T and save up to 25%\*

In four years of college, you'll probably change residences as often as you change majors. Fortunately, if you choose AT&T as your long distance company you can keep up with all the changes in your life and still save money. We offer a variety of savings options that adjust to changes in your calling habits. It's all part of The i Plan™. The personalized plan designed to fit the way you call.



To sign up, stop by our booth on campus or call  
1 800 654-0471, Ext. 4119.



\*Savings based on AT&T Simple Savings Plan. © 1993 AT&T

# Beacon Sports

August 30, 1993 • WILLIAM PATERSON COLLEGE

*In depth sports coverage begins*

*next issue.*

## Pioneer action returns this fall WPC teams gear up for upcoming seasons

By Joe Ragozzino  
CO-SPORTS EDITOR

After three long, hot summer months, the silence and emptiness of Wightman Field and the WPC Rec Center will soon disappear. The sounds and echoes of hard-hitting tackles, grunting spikes, loud slapshots, booming kicks, and cheerful fans will all come together as part of an exciting fall sports season on the WPC campus. The Pioneers are back in action and are looking to add a few more titles to a long list of WPC championships. Here's a detailed insight on what to expect this upcoming fall:

### FOOTBALL

Last season, the Pioneers were denied post-season play, despite an impressive 8-2 record (4-2 NJAC). Under Head Coach Gerry Gallagher, who enters his fifth season at the helm with a career record of 23-16-1, WPC consists of key players who are determined to achieve another successful season.

Heading the list of returners is senior quarterback Rich Smith, who will spearhead the potent wing-t offense. Smith provides the necessary experience as he threw for 750 yards (52 percent) and seven touchdowns in 1992. His primary target will be 1992 Honorable Mention All-NJAC junior receiver Stafford Washington, who had 20 receptions and three touchdowns. Senior run-

ning backs Al White and Kevin Harmon comprise of a formidable backfield. White continues his phenomenal career as WPC's all-time rushing leader (2,544 yards) and scorer (226 points), while Harmon demonstrated his versatility by catching 20 passes for 224 yards last season.

second team All-NJAC last season.

The team will open its season against Geneva (Pa.) on the road Sept. 4.

### VOLLEYBALL

Head Coach Sandy Ferrarella has molded a powerhouse Lady Pioneer volleyball

team and powerful spiker. Sophomores Cynthia Ficarra, Kim Vieira, Carolyn Fuhr, and junior Wendy Reider will see plenty of action as the team sets its sights for another banner year.

The Lady Pioneers will travel to FDU-Madison for its season opener Sept. 9.

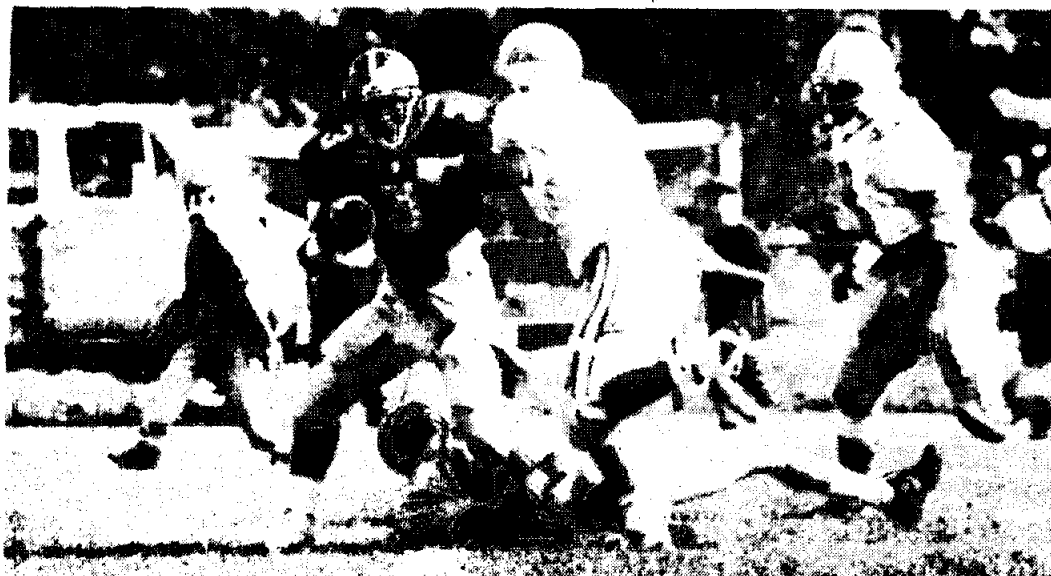
while Harte has a .815 save percentage. On the field, the Lady Pioneers display a plethora of skill players, led by sophomore forward Terry McKean, who recorded a hat trick in WPC's 4-0 victory over SUNY-Oswego last season. Other players who will try to pick up from where they left off include junior midfielder Lora Orta (two goals, one assist), sophomore Karen Cecere (three assists), and Julie Cicillini.

WPC will take part in the Vassar Tournament Sept. 4-5.

### SOCCER

Rebuilding is the key word for the WPC soccer program after last year's 1-18 season. This year's team consists of talented newcomers brought in by second-year Head Coach Brian Woods. Junior fullback Mark Housel and junior goalie Scott Bennert, products from Ocean County College, are two key additions who will help fill major holes from last season. Sophomore Emir Yaha and John Ezmat will be the two scoring weapons for Coach Woods. Yaha led the Pioneers in points with 10, while Ezmat recorded three goals that was tops on the team. Also look for Giovanni Soto, Bill Ioannou, and Joseph Sodje, who played on the Nigerian national team, to make key contributions.

The Pioneers will host U.S. Merchant Marine Sept. 1.



WPC football players in action during last season.

On defense, WPC will feature Kodak and Associated Press All-American safety Craig Paskas. The 6'3" 200 pound senior led the squad with seven interceptions a year ago. The front seven is considered one of the best in the NJAC, allowing only 3.6 rushing yards per carry last season. Senior linebackers Tom Horner and Garven Hadden and senior defensive tackle Tony DeRosa combined for 21 sacks. The aggressive trio were also named

program over the past four seasons. During that period, the Lady Pioneers built a dominant 72-35 record (.673), including the 1991 NJAC championship and last season's 18-7 mark. With six returning players, the Lady Pioneers are the clear favorite to take this year's title. Senior co-captains Terry Ryan and Patty Scrofani are the NJAC's top one-two punch. Ryan was named second team All-NJAC as a setter last season, while Scrofani is an effec-

### FIELD HOCKEY

This year's Lady Pioneer field hockey team enters the season with high expectations. Sixteen returning players have translated to these expectations as the Lady Pioneers hope to improve from last season's 4-10-1 record (1-6-1 NJAC). Sophomore goaltenders Erin Bowden and Maureen Harte had respectable seasons as first-year players. Bowden posted a .704 save percentage,

## PIONEER SPORTS WEEKLY PLANNER

### Football

vs. Geneva  
Sept. 4 (A)  
1:30 p.m.

### Field Hockey

Vassar Tourn.  
Sept. 4-5

vs. Sacred Heart  
Sept. 8 (A) 4:00 p.m.

vs. Cabrini (H)  
Sept. 11 1:00 p.m.

### Volleyball

vs. FDU-Madison  
Sept. 9 (A)  
7:00 p.m.

### Soccer

vs. U.S. Merchant  
Marine  
Sept. 1 (H) 7:00 p.m.  
Scranton Tourn.  
Sept. 4-5  
vs. Vassar (H)  
Sept. 8 7:00 p.m.  
vs. New Paltz (H)  
Sept. 11 7:00 p.m.

### Baseball

vs. Manhattan  
Sept. 12 (H)  
noon