

shining on the college community for more than 55 years

# The Beacon

FEB. 1, 1993 • WILLIAM PATERSON COLLEGE

## African heritage celebrated

By Andrew Scott  
NEWS EDITOR

A bus trip to New York's Apollo Theater, exhibits, and a black history knowledge contest are among the events planned to celebrate African heritage in February.

"I see African Heritage Month as an alternative to giving up the belief in the power of education to bring about change," said Samuel Jordan, chairperson of the African Heritage Month Planning Committee.

Jordan's exhibit, "Images From the African American Experience," is on display until Friday in the Student Center ground floor display case.

The first event of the month began today at 12:15 p.m. with a lecture by Professor Amos Wilson of the College of New Rochelle in New York. The lecture, "Self Annihilation: A Threat to the African American Community," was sponsored by Brothers For Awareness (BFA) and held in the Student Center Ballroom.

Author Nikki Giovanni and literary critic Houston Baker Jr. are among those featured in Wednesday's teleconference, "Beyond the Dream V," at 1 p.m. in Science Hall 200B. Also on Wednesday will be a bus trip to the Apollo Theater sponsored by the Black Students Association (BSA). The bus will leave Lot 5 at 5:30 p.m.

The Caribbean Students Association (CARIBSA) will give the WPC community a taste of West Indian culture at their noon luncheon on Thursday in Billy Pat's. Students can then attend BSA's scholarship party at 9:30 p.m. in the Ballroom.

SEE EVENTS, PAGE 3

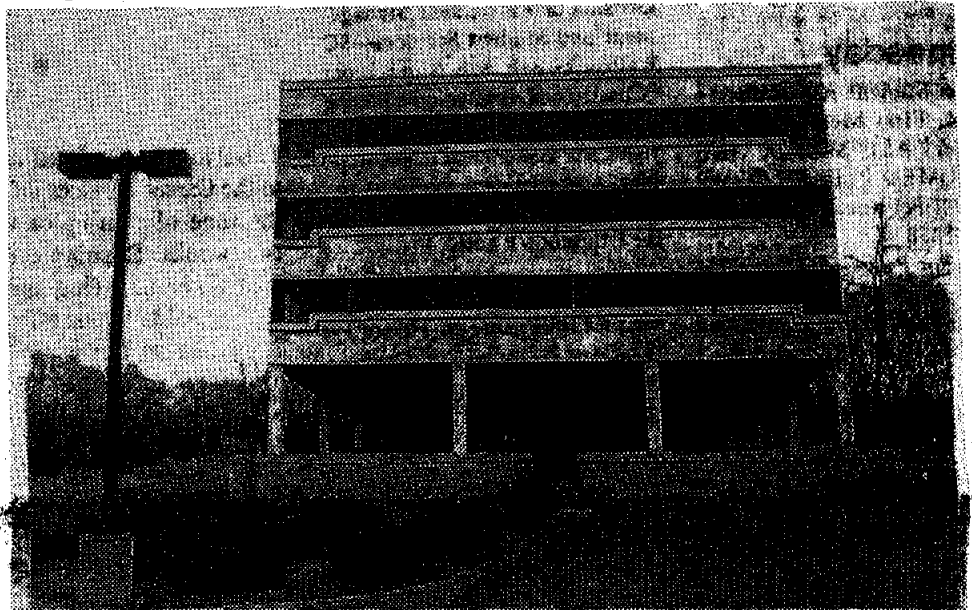
## College may buy office building Can use extra space for Master Plan renovation

By Andrew Scott  
NEWS EDITOR

WPC will purchase the building on the corner of Hamburg Turnpike and College Road if the Board of Education grants permission at the Feb. 19 meeting.

The board is presently reviewing the college's planning document for the building. The document was approved by the Board of Trustees at its Jan. 16 meeting.

The building was constructed to be rented out or sold in portions as condominium units. When the real estate market failed, developers were unable to rent the building, said Peter Spiridon of Administration and Finance. Thus, the developers were unable to pay off loans borrowed for construction. Presently, the building is claimed by the United Jersey Bank.



With the Board of Higher Education's approval, the college may buy this building.

If the college gains use of the building, that extra space would allow White Hall to become a dormitory, among other options. However, Spiridon said there must first be discus-

sion among all parties who would be affected by those options. An agreement must be reached on how to best use the extra space.

Meanwhile, Master Plan

construction continues on campus, with hopes of starting work on library renovation and the new academic building in spring, Spiridon said.

## Panel to target sex harassment

By Pamela Johnson

ASST. NEWS EDITOR

The Sexual Harassment Panel will be meeting with administrators to discuss the objectives of the panel. Those objectives include educating the college community about what harassment is and how it is to be dealt with as well as encouraging support between students and faculty who take action against harassment according to Jean Levitan, chairperson of the panel and health sciences professor, and Meryle Kaplan, director of the Women's Center.

The panel also wants to establish guidelines for more effective action against offenders. This can be difficult because any action taken against

a person who is accused of harassment must not violate his or her union protections.

"One of the things the committee should be doing is educating students" Levitan said. She expressed interest in circulating brochures and flyers on the subject but said that the panel has not been able to compile sufficient material for publication. She attributes this to the rotating basis of time served on the board by faculty members.

"Students need to understand what harassment is" said Kaplan. She emphasized the importance of making people aware of what constitutes an actionable offense.

The Student Handbook defines harassment as "unwelcome sexual advances, requests for

sexual favors, and other verbal or physical conduct of a sexual nature when 1) submission to such conduct is made either explicitly or implicitly a term or condition of an individual's employment or academic status, 2) submission to or rejection of such conduct by an individual is used as the basis for employment decisions affecting an individual, or 3) such conduct has the purpose or effect of interfering with an individual's work performance or academic performance or creating an intimidating, hostile or offensive working or learning environment."

A person can move up the administrative channels for help with a harassment problem, said Levitan. A person who has been harassed can first

express their discomfort directly to the offending party or, if that is too uncomfortable the person can go to the chairperson of the department or any person on the Sexual Harassment Panel. A list of those serving on the panel appears on p. 51 of the Student Handbook. A person can also go to the Affirmative Action Officer, Robie Cagnina or the dean of his or her school. The panel can help a student work with the head of the department or the dean but cannot hold a faculty member accountable for his or her actions.

Levitan pointed out that people have been verbally reprimanded by Robie Cagnina but little else can be done if the offender is tenured. She

SEE SEX, PAGE 5

Monday

Eating Disorders Support Group—9:30 am the 2nd and 4th Monday of the month, Student Center 332. 7 pm the 2nd and 4th Wednesday of the month, SC 326, except February 10th in Matelson 121. Led by recovered persons. For more info call Ann Yusaitis, Matelson 109, 595-2256.

Tuesday

WPC TV-Newsline Studio—Tuesday at 5:00 pm. For more information, please attend the first meeting—John Rhodes or Hillary Andrews—Dept. of Communication ext. 2167.

JSA—SC 325—Feb. 2nd, 9:30-Noon. Bagels N More—open house and discussion. For more info call Nancy Susso at ext. 2524.

JSA—7:30-9:00 SC 324-325. Welcome Back Pizza and game night.

Wednesday

Business Student Association—SC 324. First Meeting of the semester. ALL MAJOR ARE WELCOMED PLEASE COME JOIN US! For more info call 595-2507 SC 318.

People For Peace—SC Room 304 at 2:00 pm. Our first meeting! Join the club that promotes peace on campus, locally and globally! Bring ideas for upcoming events. For more info come up to SC Room 304 or call 595-2022.

Semester Abroad Program—2:30-4:00 in SC 326 and Thursday at 3:30-4:30 in SC 213. Information session about the Semester Abroad Program. Come and find out! Former participants will be sharing their experiences and answer questions. Contact Prof. G. Satra in Matelson 317 for more info.

Thursday

THEATRE DEPT. - Thursday at 5 p.m. in Hunziker 109. Actors and actresses are needed for a Live Mystery Radio Theatre Group. All who are interested are welcome to attend this organizational meeting. For more information call 595-2335

Future

Division of Enrollment Management and Student Services—SC Ballroom—Feb. 9th Noon-1 pm "Chautaugus"—Discussion focusing on the balance between individual rights and institutional responsibilities. Audience participation is encouraged. For more info contact the Office of VP Lolli.

Alpha Psi Omega (Honorary Theatre Fraternity)- Coming Soon!!!! Auditions for The Nerd

SENIORS!!!

Congratulations! Graduation has arrived for some, and is just around the corner for many students. Now is the time for May grads to begin searching for full time positions. The Career Services Office will soon be hosting our ON CAMPUS RECRUITMENT PROGRAM which many of our alumni tell us was the most helpful service in locating a good job. Don't miss out on the opportunity to be interviewed by companies for actual job openings. To be eligible to sign up for interviews, you must be a senior or have graduated in December 1992 and you must meet the general qualifications specified by the employer. To participate in the interviews it is essential that you:

- 1. Submit a completed resume to the Career Services Office at the time of sign-up or within two weeks. Resume critique and laser printing services are available in our office.
2. Attend an Interview Techniques Workshop. See the Spring Workshop schedule for dates and other offerings.

Seniors are encouraged to enroll early as the best companies fill up first. Registration will be held in the Career Library, Matelson 104 and sign-ups begin on Friday, January 22. Sign up times are 9:00 am-noon and 2:00-4:00 pm. Monday through Friday and Monday evenings between 5:30-6:30. As of February 5th during on-campus recruiting, you may sign up any weekday between 9:00 am and 4:00 pm. Please look over the following list of positions and companies to see which ones interest you. The complete Spring Recruiting Schedule is available in Matelson 103.

- Prudential Ins.-Sales Rep.
Meldisco-Distr. Coord.
Roadway Package System-Mgmt. Trainee
American Home Foods-Sales Rep.
Office of Personnel Mgmt-Variou
Enterprise Rent-a-Car-Mgmt Trainee
Samuel Klein & Co.-Junior Acct.
United Jersey Bank-Mgmt Trainee
Staples-Mgmt Trainee
Mutual of New York Ins.-Sales Rep.
Met Life-Sales Rep.

- Kmart (retail)-Mgmt Trainee
Nori, Henion & Walsh-Financial Status
Fairleigh Dickinson-Paralegal Program
Corporate Info Systems-Sales Rep.
Allnet Comm. Systems-Sales Rep.
Toys R Us-Mgmt Trainee
Lechters-Mgmt Trainee
Int'l Specialty Products, Inc.-Lab Tech.

Northwest Mutual Ins.-Sales Rep.

Kmart Fashions-Distribution Ctr, Supervisor, Jr. Accountant, Jr. Financial Analyst, Office Supervisor, Programmer Trainee

State Farm Insurance-Accounting, Claim Rep. Trainee, Underwriter Trainee

Ford Financial Group-Financial Sales

Social Security Admin.-Social Insurance Rep.

Liz Clairborne, Inc.-Various
Asbury Park Press-Account.

Please feel free to contact the Career Services Office at 595-2282 if you have any questions. We wish you luck in your job search!

Health care discussed

By Anthony Francin

STAFF WRITER

How can health care costs be controlled while maintaining quality? Does access mean minimum care or complete care for all, or something in between? What's the best way to pay for health care: person ally, through insurance, or by the government?

Friday's Distinguished Lecturer Series in Shea Auditorium focused on health care reform. Now the subject of more urgency with the appointment of Hillary Clinton as Domestic Policy Advisor, a position focusing on American health insurance. The lecture featured two speakers and a moderator, all highly experienced in the health policy field.

Uwe Reinhardt, James Madison Professor of Political Economy at Princeton University believes the Clinton Administration should focus on the public health programs and make them efficient.

Debating Reinhardt was Pamela Bailey, President of the National Committee for Quality Health Care, an organization stressing the importance of private enterprise in restructuring the nation's health care system.

The evening began with an introduction by Edward Duffie, a member of WPC's Board of Directors. He explained the reasoning behind the topic of for the evening, and outlined the goals he hoped it would cover. "We felt the audience could benefit from a comprehensive exploration of the topic of health care reform in a manner which interrelates many of it's most important facets."

The topics the speakers would focus on were, the cost and quality of health care; access of health care; and how it should be paid for.

Joan Whitlow, Medical Editor for the Star Ledger, moderated the evening's proceedings. Although the evening was promoted as a "health care debate," both speakers agreed on

Both Bailey and Reinhardt stressed the relationship between one's employment and one's health. "Even if you were stone drunk, you wouldn't create a health care system that ties a person's health to a job, an industry, a company. If your job is lost, so is your health" stated Reinhardt. "Health care is another form of national defense, it is the cement that makes a nation out of a people."

"Health care is another form of national defense, it is the cement that makes a nation out of a people."-Reinhardt

the need for reform. Indeed, the same facts and statistics were cited by both Bailey and Reinhardt. For instance, the U.S. spends upward of \$900 billion each year on health care, yet at this time 37 million are uninsured and countless millions are underinsured, according to Reinhardt.

ate a health care system that ties a person's health to a job, an industry, a company. If your job is lost, so is your health" stated Reinhardt. "Health care is another form of national defense, it is the cement that makes a nation out of a people."

Both Bailey and Reinhardt stressed the relationship between one's employment and one's health. "Even if you were stone drunk, you wouldn't create a health care system that ties a person's health to a job, an industry, a company. If your job is lost, so is your health" stated Reinhardt. "Health care is another form of national defense, it is the cement that makes a nation out of a people."

ate a health care system that ties a person's health to a job, an industry, a company. If your job is lost, so is your health" stated Reinhardt. "Health care is another form of national defense, it is the cement that makes a nation out of a people."

Bailey agreed with Reinhardt's diagnosis, but not his remedy. Rather than advocating a publicly funded and controlled insurance system, she believed the insurance industry could handle reform privately, without much government regulation.

A Canadian style system in this country would mean higher taxes and reduced quality" Bailey said in an attempt to discredit the Canadian health care system.

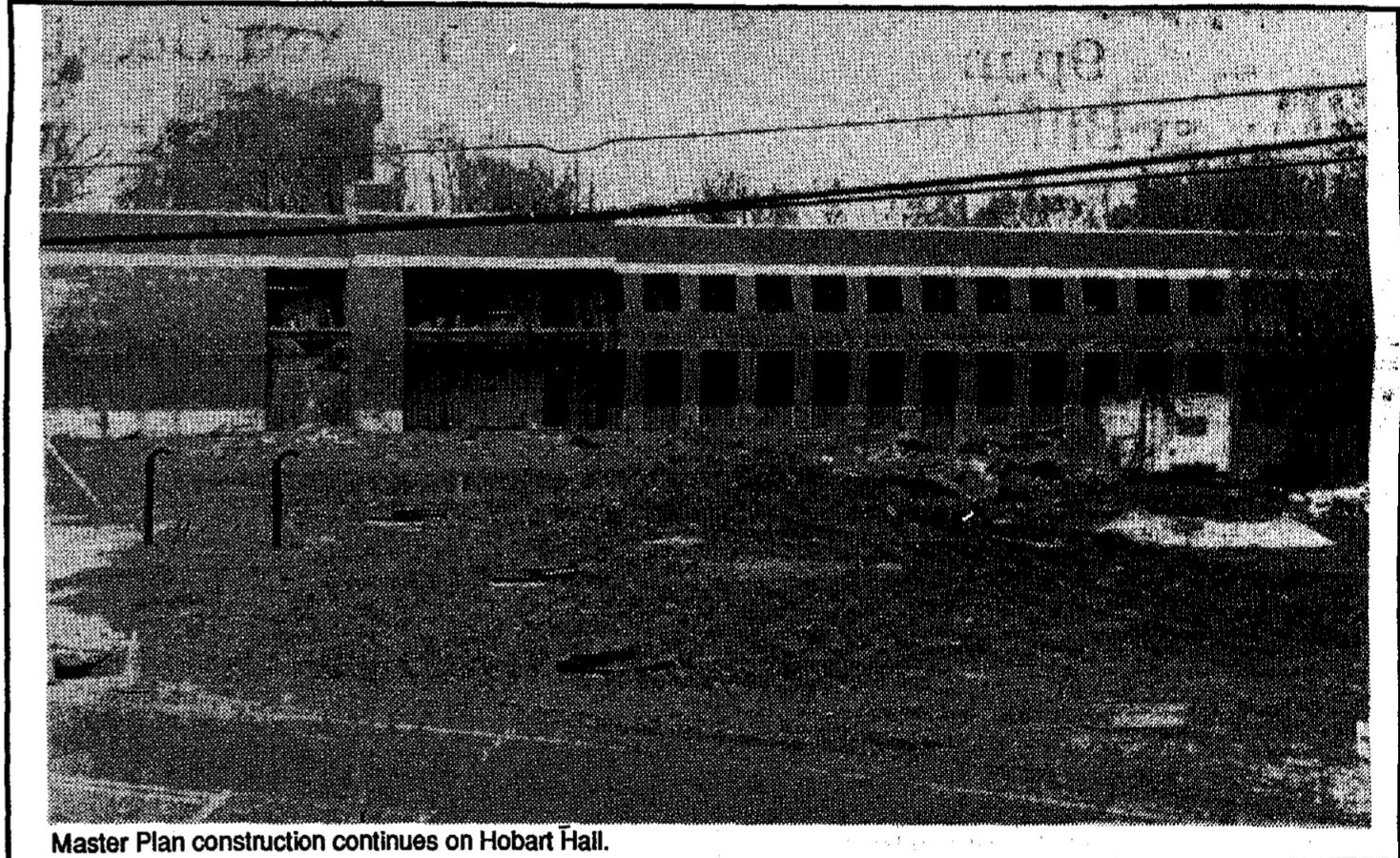
Refuting Bailey's comment, Reinhardt stated that Canada pays 30 percent less per capita on health care than the U.S. and by the year 2000, we will be spending 18 percent of our gross national product on health care.

The speakers also answered questions that had been written down by the audience

prior to their prepared presentations. One of these questions dealt with the future of American health care in general and the approach President Clinton will take in particular.

Bailey believed Clinton would advocate her "managed competition" mix of private enterprise and self regulation. Reinhardt believed this could only work if a fair fee schedule was created that would provide patients with each hospital's and doctor's cost.

The lecture was well attended for an event that offered no celebrity or well known public figure. Closing the lecture, WPC President Arnold Speert announced that Larry King canceled his appearance on April 2, but has been replaced by former Defense Secretary Dick Cheney.



Master Plan construction continues on Hobart Hall.

Disney AUDITIONS
DANCERS, MUSICAL THEATRE PERFORMERS, SINGERS WHO DANCE, SINGERS WHO MOVE WELL, CHORAL SINGERS
Walt Disney World Co., near Orlando, Florida will audition performers with expertise in the above talent categories for annual contracts beginning May through August 1993.
To qualify, you must be at least 18 by May 1, 1993. Bring current, non-returnable resume and photo. Singers who dance/move well and musical theatre performers prepare two vocal selections (one ballad, one uptempo); choral singers prepare two short selections that best display vocal range, style and versatility. All singers bring vocal sheet music in your key; accompanist provided, no tapes. Singers may be asked to learn at least one movement combination. Bring dance attire. Dancers are taught dance combinations.
Candidates for the summer Disney Entertainment/Work Experience Program will also be seen during this audition. Each year, twelve dancers who sing are selected to participate in a program designed to enhance professional talents. Those chosen perform four to five times daily. Approximately ten hours a week are devoted to classes and workshops led by Disney professionals and master instructors. Program participants receive a weekly stipend and share furnished apartments provided by the Company. This is a fourteen week summer program, May 20 - August 28, 1993.
If you have questions, call Walt Disney World Audition Information at 407/345-5701, Monday - Friday, 10am - 1pm and 2pm - 6pm Eastern Time (except holidays)
Audition times are scheduled for eligible performers and open call. For explanation of "eligible performer" call Actor's Equity Association at (212) 869-8530, ext. 308.
NEW YORK CITY, NEW YORK
The Lawrence A. Wien Center
890 Broadway, 4th Floor (Between 19th and 20th)
Wednesday, February 3
Eligible Choral Singers, Singers Who Dance/Move Well, Eligible Musical Theatre Performers 10am
Thursday, February 4
Eligible Male Dancers 10am
Eligible Female Dancers 12 noon
Friday, February 5
Open Call Male Choral Singers, Singers Who Dance/Move Well 10am
Open Call Male Musical Theatre Performers 10am
Open Call Male Dancers 1pm
Saturday, February 6
Open Call Female Choral Singers, Singers Who Dance/Move Well 10am
Open Call Female Musical Theatre Performers 10am
Open Call Female Dancers 1pm
CALLBACK SAME DAY (each day)
All full-time entertainers employed by Walt Disney World Co. are covered under the terms and conditions of a collective bargaining agreement with Actor's Equity Association. Salaries are subject to change.
Walt Disney World Co.
AN EQUAL OPPORTUNITY EMPLOYER

We, The Beacon, in order to form a more perfect paper... NEED YOUR HELP!

WE'LL GIVE IT TO YOU STRAIGHT.

WPC students publish The Beacon each week using only two vintage Macintosh computers, one equally outmoded laser printer and a six-year-old desktop publishing program. Due to this lack of adequate technology, The Beacon staff spends approximately 40 hours each weekend producing your paper (this does not include time given over to assigning, researching and writing articles). Most of this production time is spent by staffers waiting to use a computer or waiting for a computer or printer problem to be resolved.

The Beacon would like to thank the following for their support: Patrons Week of Feb. 1, 1993

Fort P. Manno
Marina Cunningham
Dr. Virginia Mollenkott

Lina R. Walter
David H. Press
Diana N. Peck

Max Womack
Yuko Womack
Marilyn Gilroy

In short, it is imperative that The Beacon acquire new (or newer) and better hardware and software. This can be accomplished only with your help.

If you would like to help with a small donation (suggested donation \$10), just fill out this coupon and bring it (or mail it) with your donation to Student Center 310. Your generosity will be acknowledged in the next week's issue of The Beacon. Thank you.

Yes, I would like to donate to The Beacon's Computer Fund. Enclosed is my donation of:

- \$10
other
cash
check (made out to The Beacon.)

Name (please print)

PLEASE SEND TO: The Beacon, 300 Pompton Rd. Wayne, N.J. 07470

From everyone at The Beacon, THANK YOU.

Events planned to honor African culture

FROM AFRICAN, PAGE 1

CARIBSA will then end the week with another of their events, a tribute to the late reggae singer, Bob Marley, on Saturday at 9 p.m. in the Ballroom.

African Heritage Month was originally instituted as Negro History Week in the early 1900s by Carter G. Woodson, an African American scholar and historian, according to Lynda Day, former chairperson of the African Heritage Month Planning Committee. The purpose is to educate the public

about the culture, history, and achievements of people of African descent.

African heritage has been celebrated each year for at least twenty years on the WPC campus. This results from the early efforts of the African Studies Department, said Leslie Agard-Jones, former assistant vice president of the Office of Minority Education (OME). The department listened to students' suggestions and allowed them to be more involved in organizing events.

"African Heritage Month

should be a period of reflection, reading, and exploring issues for all students, not just those of color," said Agard-Jones.

Other events in February include a Feb. 10 display of the works of WPC art student Mark Anderson at 3:30 p.m. in the Student Center Art Gallery, sponsored by the OME. This will be part of an exhibit presented by James Brown, a WPC art professor, from Feb. 8 to 26 in the Art Gallery. Vendors and art exhibits will be featured at Delta Sigma Theta

sorority's Feb. 19 market and manifest at 11 a.m. in the Ballroom.

On Feb. 20, the WPC chapter of the National Association of the Advancement of Colored People (NAACP) will sponsor a formal ball at 9:30 p.m. in the Ballroom.

Douglas Turner-Ward, a visiting distinguished professor in the African Studies Department, wrote a play, Struggles For Freedom, which will be presented Feb. 22 at 8 p.m. in the Ballroom. The presentation of the play, which was pro-

duced by Dean of the School of Arts and Communication George McCloud, is sponsored by the African Studies Department and the Race and Gender Project.

Feb. 26 will be a night for family and friends, sponsored by Sisters for Awareness, Black Leadership, and Equality. The night will feature student performances, a fashion show, and a play, all followed by a reception. The event starts at 7 p.m. in Shea Center for the Performing Arts.

# Campus Films



## S.A.P.B.

### Members Needed!!

Join Today  
and  
Get involved!!  
Meetings in Rm. 333 5:00pm  
Wednesday Nights 3<sup>rd</sup> fl. SC.

- February 2, Single White Female
- February 9, Boomerang
- February 16, Unlawful Entry
- February 23, Universal Soldier
- March 2, School Ties (Ballroom)
- March 9, Death Becomes Her
- March 23, A League of Their Own

Every Tuesday Night  
9p.m.  
at Billy Pat's  
Unlimited Soda and Popcorn  
\$1.00 Admission

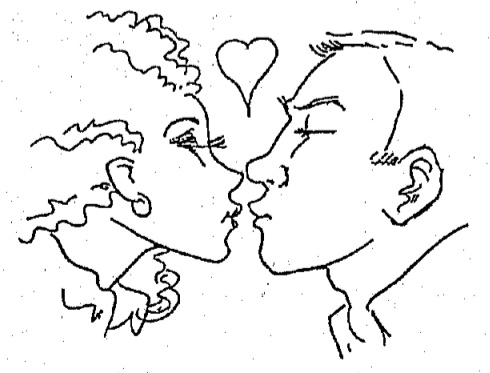
95-3259 SC 303 SGA FUNDED

Who shot  
J.F.K.  
? You Decide... ?  
**March 29th**

## The Computer Society Presents The First Annual:

Computer Dating

Tuesday, February 16th  
Billy Pats  
2 - 4pm



Sign up in the Student Center!

SGA FUNDED

# Women athletes recognized

By Andrew Scott  
NEWS EDITOR

On Wednesday, the Women's Center and the Movement Science Department honored six female athletes at the Rec Center in recognition of National Women and Girls in Sports Day, which was on Jan. 27.

"We have outstanding women athletes who don't get proper recognition," said Women's Athletics Director Sabrina Grant.

All six athletes received All Conference honors, which means they were recognized as being the best in the conference. However, top honors went to volleyball spiker Andrea Tutulic, who was named 1992 Player of the Year, and field hockey forward Danielle Tracy, named all-time scorer.

The other athletes recognized were volleyball setters Stacey Zweil and Terry Ryan, field hockey midfielder Cindy Creaney, and women's basketball forward Jill Bachonski.

Tutulic, a senior movement science major, was named first team all NJAC (New Jersey Athletic Conference) all conference in 1991 and '92. "First team" means the best team in the conference. She was also 1992 co-captain of the volleyball team.

Tracy scored 39 goals between 1989 and '92, surpassing former team member Megg Gallarelli who, from 1979 to '82, scored 38 goals. She is also a senior majoring in movement science.

Zweil, a senior elementary education major, is one of the top setters ever to play for the WPC volleyball team. She earned first team all NJAC honors in 1991 and '92. She was also 1992 co-captain with Tutulic.

Ryan, a junior majoring in movement science, made the 1992 NJAC all conference selection. She is skilled as both a setter and a spiker and also plays softball.

Bachonski, a senior movement science major, is the eighth women's basketball player in the program's history to score over 1,000 career points. She was named NJAC player of the week in 1992 and a 1991-92 NJAC first team all conference selection.

The next event organized by the Women's Center will be a safer sex party in February, said Meryle Kaplan, director of the Women's Center.

Creaney, a junior elementary education/history major, has become one of the top mid-fielders in the NJAC. She scored one goal and two assists in 1992.

Bachonski, a senior movement science major, is the eighth women's basketball player in the program's history to score over 1,000 career points. She was named NJAC player of the week in 1992 and a 1991-92 NJAC first team all conference selection.

## Helsley named asst. director, Campus Activities

By Jennifer Boerner  
NEWS CONTRIBUTOR

The organizing of events such as the All-Campus Blood Drive and Springfest will now be the concern of Elizabeth Helsley, who was appointed as one of the assistant directors of Campus Activities this semester.

Helsley's position was held by Melanie Sigal, who left last spring. Helsley's responsibilities include advising the Greek community and organizing conferences held at WPC by off-campus groups and organizations.

"It became clear after Sigal's departure that someone was needed to handle the increasing Greek population," said Helsley, who was formerly responsible for helping to coordinate

Greek organizations' activities and health-related activities.

"The main difference between Sigal's position and my position is that I'm employed by Campus Activities and funding is difficult," Helsley said. "Sigal was employed by the college itself."

Because funding is low,

Helsley's appointment is a temporary one running until June, at which point the amount of funding will determine whether the position will still exist.

"For example, there is something called Project Aware in which an estimated 100 students from the community stay in dorms and participate in certain workshops, etc," she said.

## Sex harassment defined

FROM PANEL, PAGE 1

pointed out that if a faculty member was an adjunct, assistant or associate professor, he or she would be denied promotion, reappointment or tenure. However, the most difficult situation is that of the tenured professor with an offensive behavior pattern. According to Levitan, a professor's course load can be switched but tenure cannot be removed.

Students have alleviated the situation through working with the chairperson of the department. A student can be switched into another section of a course, an alternative course can be chosen or an independent study can be arranged under supervision of another staff member. However, this relieves the student of further discomfort, but does not hold the offender accountable for his or her actions.

According to the Campus Violence Survey, published in 1992 and conducted by Carole Sheffield, professor of political science, 116 students felt frightened, threatened or intimidated by faculty, 30 by professional staff, 124 by Campus Police, 81 by custodians 18 by an administrator 335 by students out of 2247 respondents.

While these feelings alone do not constitute sexual harassment, they are often signs of it. Some blatant accounts of harassment that were cited in the survey include:

"A faculty member continually made physical advances

toward me. I finally withdrew from the department."

"A faculty member offered me a higher grade for sexual favors."

"The man told me he gets what he wants and he wants me. I couldn't say no...The man is still a professional staff member on this campus after more than 6 individuals went to his employers with the same story as mine. He was only warned...I think he should be fired because he tried to sexually persuade others, not just me."

"My professor places his hand on my leg during class."

"So many times I have been put down in classroom lectures because of my sex."

The survey also includes stories of harassed faculty

members.

"My boss grabbed my breast."

"My supervisor is trying to make me have a sexual relationship with him."

"I was raped during what was supposed to be a professional meeting."

Kaplan stressed the necessity for students to document any harassment they have come in contact with. A formal complaint is suggested but even a personal journal can be of help. If a person has something written and dated that supports his or her story, their word is affirmed. This can also be used to support other victim's stories.

According to Kaplan, harassment is "more actionable than people understand."

## News Reporters Wanted

—reporters needed to write for independent weekly. Willing to learn and spend several hours a week writing stories. Great benefits (we have a refrigerator, windows etc.)

Call The Beacon  
595-2248

### Bojangles

ALL AMERICAN BAR & GRILL  
142 RYERSON AVENUE, WAYNE, NJ 201-628-1669

★ ENTERTAINMENT ★

Sat., Feb. 6	Diamond
Feb. 13	Shaker Road
Sunday ...	OLDIES BUT GOODIES WITH DJ NICK DANGERFIELD
Monday ...	Pool tournament "SHOT SPECIALS"
Tuesday ...	.10° wings 4pm to closing "SHOT SPECIALS"
Wednesday ...	75° Drafts w/ DJ Ro
Thursday ...	Ladies Night w/ DJ BOB Ladies Drinks 1/2 price & \$1.00 Drafts
Friday ...	Dance Night with DJ Glenn & "SHOTS SPECIALS"
Show College ID & Get \$6.00 Pitchers Every Night	
DIRECTIONS: Rt. 46 West To Rt. 23 North To Newark Pompton Turnpike Exit - Make 2 <sup>nd</sup> Left Onto RYERSON AVE	

# Abortion rights reaffirmed

As President Clinton's critics line up to take turns berating the former Arkansas governor during his first few weeks in office, his advocates watch and wait as he cautiously wades his way through his campaign promises. While his guarantee to lift the ban on homosexuals in the military will have to wait for Congress, President Clinton has followed through on his firm support of "life."

The life, that is, of Roe v. Wade as this country's last word on abortion.

Only days after his inauguration, President Clinton (unlike George "Pardon Me" Bush who used his power of executive order to guarantee the freedom of the few involved in the Iran-Contra scandal) used his executive powers to guarantee the freedom of choice for half of this country's population.

Through his power of executive order, Clinton did the following:

- ended a five-year ban on fetal tissue research which scientists at home and abroad feel holds the secret to treatment of various cancers and other conditions,



- reversed the so-called Mexico City policy which blocked the U.S. from providing assistance or aid to foreign organizations that accept or perform abortion.

And most importantly,

- overturned the so-called gag rule that

restricted abortion counseling at more than 4,000 federally-funded family planning clinics across the country,

- set in motion the process to revoke prohibitions on the importation of the French abortion pill, RU486,

- permitted abortion in American military hospitals overseas if they are paid for private.

Anti-choice demonstrators mustered a (small) 75,000 at the nation's capital (compared to upwards of 200,000 pro-choice advocates that have on numerous occasions gathered in Washington) to show support for what they refer to as "the inherent right to life of the unborn." That statement could include the addendum "unborn male" because a female should grow into maturity only to forfeit her rights to the reactionary powers that be.

With the election of Bill Clinton, the security of a woman's right to choose and make decisions concerning her body is intact. The backward-time warp of the Reagan-Bush era nearly broke the back of Roe v. Wade. Luckily, this particular right has survived—for at least four more years.

## LETTERS

### Campus generosity appreciated

Editor, The Beacon:

It is marvelous to us that the Catholic Campus Ministry Center has coordinated a Thanksgiving Awareness Program that has benefitted the hungry and needy of our county for now the fourteenth year. I have been instrumental in describing our appreciation, annually, since 1984. It is good to have such a file.

Father Louis Scurti, Director of that Center, informs me that we are indebted not only to the members of that Center, but also to an amazing list of others who functioned in that program. I insist on naming each and all: The Greek Senate; OLAS; The Student Government Association; The Beacon; students, faculty and staff who donated and collected; the many anonymous donors who left food for the TAP '92 collection; the Thomas English Muffin Co.; Path Mark; Kalli Protostopolis, the SGA Secretary; Tony Cavatto; the Italian-American Club; Tau Kappa Epsilon; Phi Kappa Tau; Lambda Theta Phi, for carrying and bringing food and coin cans. That is an imposing

list, and we thank them personally.

The drive netted over \$1,100 which was deposited in the Community Food Bank (which is served by 'Second Harvest' and sends food to us for 12 cents/lb)...which translates to an accruing to us of over 9,000 lbs of food!!!.

Please extend to all contributors the deep appreciation of the members of the COALITION and of the clients!

Jaime R. Llanso  
Coordinator of Emergency Food Coalition of Passaic County

### Commuters urged to join Orientation team

Editor, The Beacon:

Freshman Orientation '93 is August 31 and our annual application/interview process for Orientation Leaders is underway. The Orientation Committee encourages our commuter population to apply for positions. Orientation leaders are paid and the time commitment will be the last three days of August plus three meetings in the Spring

Semester.

Applications are available from Debbie Sina in the Student Activities Office in the Student Center. The deadline for new applicants is Friday, February 5, at noon. Interviews will be held during the months of February and March.

Orientation brings us together to plan, implement and enjoy a very important event in the life of our incoming freshman. We urge commuters to consider applying for leader positions. We need your insights into campus life and you will find that Orientation is a special way to become involved with WPC.

Anne Wright  
Director Freshman Life

See Page 15 for more  
Letters to the Editor

### The Beacon

Founded in 1936

Domenick Stampone

Editor-in-Chief

News Editor

Andrew Scott

Asst. News Editor

Pamela Johnson

Copy Editor  
Randee Bayer-Spittel

Insider Editor  
Shelli Ross

Asst. Insider Editor  
Mike Garry

Sports Editors  
Michael Braun

Joe Ragozzino

Photo Editor  
Karen Becht

Staff Writers  
Joe Brennan

W. Scott Sherman

Eleonora Stampone

Brian M. Yaworski

Anthony Francis

Walter Elliot

Lorrie Panullo

Business Manager  
Dino Stampone

Staff Photographers  
Joshua Smith

Mike Fantau

Design Director  
Joshua Smith

Staff Columnists  
Albert Stampone

Advertising Manager  
Shaya Ansari

Illustrator  
Tom Crews

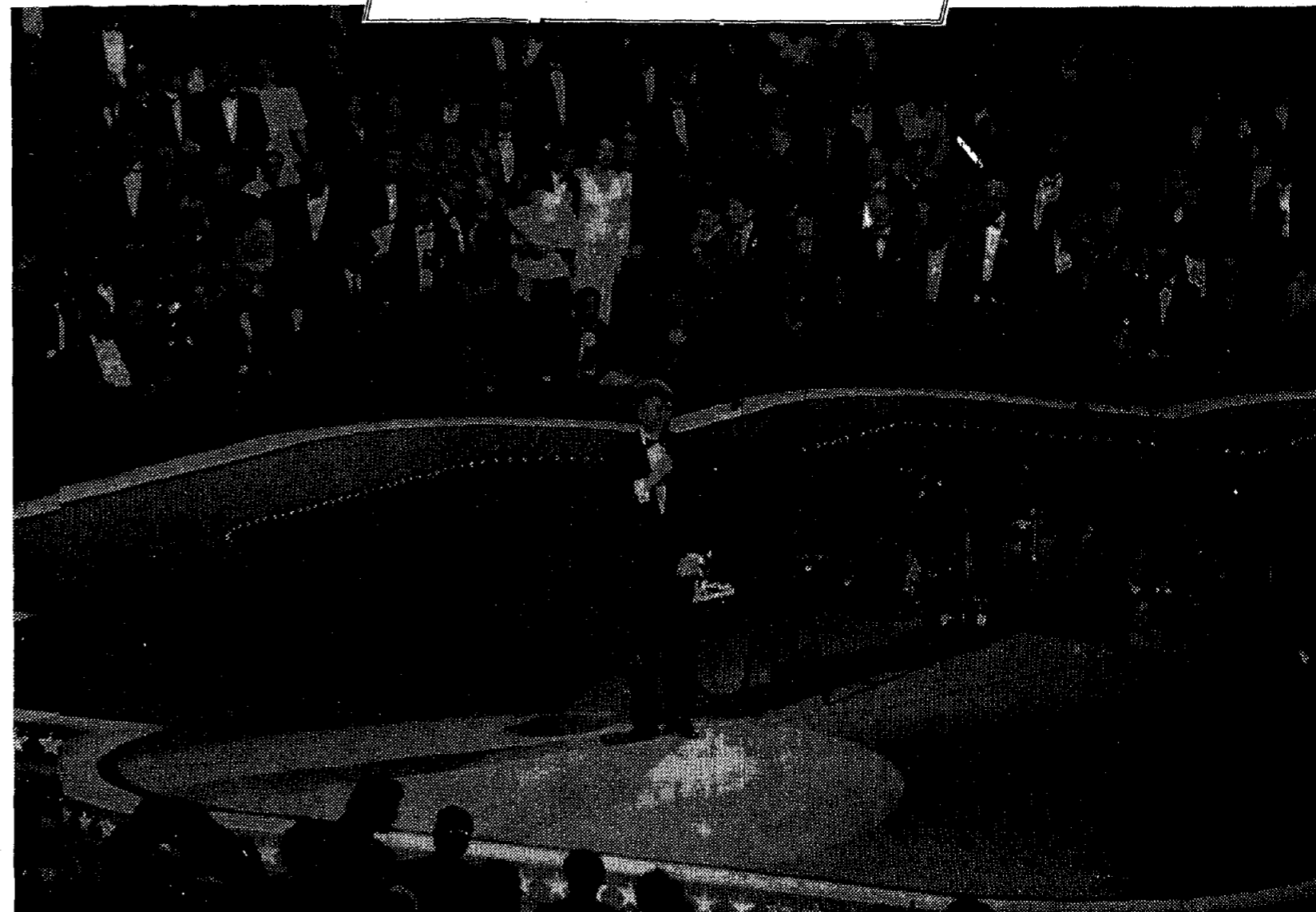
Circulation Manager  
Ari Saperstein

Advertiser  
Tina Leshar

Business Adviser  
Barbara Stomber

The Beacon of William Paterson College is published by the students of William Paterson College of Wayne, New Jersey 07470, with editorial, production and business offices in room 310 of the Student Center. Newspaper content represents the judgment of The Beacon staff in accordance with The Beacon constitution and does not necessarily represent the judgment of the Student Government Association, the administration, faculty or the State of New Jersey. Opinions in signed columns and letters to the editor are not necessarily the opinion of the staff. This paper is independently funded. Editors can be reached by dialing 201-595-2248 or 201-595-3264.

# THE INSIDER



(Photo by Lorrie Panullo)

## ... Welcoming the new guy?



(Photo by Valerie Wood)

Where's Waldo? We can pick out all sorts of fab celebrities who graced the new President's inaugural gala with their presence: Richard Dreyfuss, Hillary Clinton, Angelica Huston, Michael Jackson, Little Richard, Stephen Stills, Al Gore and wife, censorship maven Tipper, Quincy Jones, Judy Collins, Barry Manilow, Aretha Franklin, Annette Bening and Warren Beatty, the members of Fleetwood Mac and Don Was. Apparently, everyone who's considered anyone was in attendance...

**BE A PART OF IT - MAKE A DIFFERENCE!**

**R.A. APPLICATIONS AVAILABLE  
1993-1994 ACADEMIC YEAR**

**Qualifications:**

1. Candidate must be a full-time sophomore, junior, senior or graduate student.
2. Candidate must have a CURRENT CUMULATIVE GPA OF 2.25. Upon application, candidate's GPA will be verified.
3. Candidate must be free of any type of disciplinary record which may call into question an individual's suitability for the Resident Assistant position.
4. The Resident Assistant appointment is for the full academic year (if appointment begins in the Fall term).
5. The individual may not hold a job outside of campus during his/her first term of employment. On-campus employment must be approved by the Area Coordinator/Resident Director.
6. The individual must participate in all designated staff development meetings throughout the year.

**APPLICATIONS CAN BE PICKED UP IN THE  
RESIDENCE LIFE CENTRAL OFFICE, LOCATED IN  
THE TOWERS, ROOM D-29. APPLICATIONS MUST BE  
RETURNED TO THE CENTRAL OFFICE NO LATER  
THAN NOON ON FRIDAY, FEBRUARY 5, 1993.**

**BE A PART OF IT MAKE A DIFFERENCE!**

**R.A. INTEREST SESSION**

**IF YOU WOULD LIKE TO BE AN R.A. NEXT  
FALL COME TO AN INTEREST SESSION**

**PLACE: D-Floor Radius Lounge**

**South Tower**

**DATE: February 1, 1993**

**TIME: 7:00 pm**

**Inaugural Gala an elitist ego trip**

**By Lorrie Panto  
STAFF WRITER**

Politics and rock and I seem to go hand in hand like bubble gum and sidewalks. For some reason, politicians seem to think they achieve credibility with youngsters by standing next to current celebrities, or today's rock stars.

At the Inaugural Gala in Landover, MD on Jan. 19, celebrities abounded. There were performances by Michael Jackson, Michael Bolton, Barbara Streisand, Barry Manilow, Fleetwood Mac, Chuck Berry and Little Richard, among many others. In the audience Jack Nicholson, Dick Cavett, Henry Winkler, Angelica Houston, Warren Beatty and Annette Bening, etc. had better seats than congressmen or senators.

Throughout the event, which seemed to include politicians by every entertainer who took the stage (Michael Jackson speaks about Acquired Immune Deficiency Syndrome (AIDS), and Sally Field with women's rights, etc.), I wondered who appointed these people to act as the spokespeople for an American public. What is the significance of Jackson babbling on about Ryan White and the amount of money the U.S. dedicates to AIDS research?

Not that I'm against locating more money to find a cure for AIDS, and yes, I think there should probably be a statue of Ryan White permanently displayed on a White House lawn to remind everyone that heroes don't necessarily have to fight in overseas wars, or even elected to some position of national leadership. A hero can be a 1-year-old with AIDS who's been denied the basic right of attending school in Indiana. The problem I had, beyond the fact that Jackson's speech seemed more than a little inappropriate, and



**Fleetwood Mac reunited after an 11-year separation to close Bill Clinton's inaugural gala with his campaign theme, "Don't Stop Thinkin' About Tomorrow."**

more than a bit long-winded, is at what point did these people become the voice of political movement in our country?

I've never been to an Inaugural celebration before. Probably because I'm not really into politics, or maybe because Reagan/Bush never

***...Few seemed sincere in their affection for Clinton and his new regime—LP***

invited me. I didn't really know what to expect from the event, so I went with no expectations other than being subjected to the Secret Services' strict security at the entrance doors.

What I found was a venue filled with almost 40,000 people dressed in tuxedos and evening gowns, who seemed to be there for the sake of the noise they could generate for the television cameras. There was no

feeling of an American reunion—as the event was billed.

Instead, it was an ego trip to be invited and involved. The celebrities didn't seem connected or even concerned about Clinton. They were there to see and be seen, and with the exception of Streisand, few seemed sincere in their affection for Clinton and his new regime. Instead, it was the parties they sought and the photo opportunities they craved.

The high point of the evening was Chuck Berry and Little Richard with an all-star band. Macaulay Culkin was as cute as Bill Cosby was embarrassing. The musical low point was Barry Manilow singing, especially his rendition of "My Country 'Tis of Thee," which prompted laughter and silent reflections of grammar school memories from the crowd—okay, maybe it was just me. The surprise of the night was realizing just how perfectly Barbara Streisand sings, or maybe just how out of date Barry Manilow really is.

I felt an obligation to attend at least one of the five Inaugural cele-

SEE PREZ, PAGE 13

**WEST  
COAST  
SCENE**

**By Dawn M. Marecki  
WEST COAST CORRESPONDENT**

A fellow writer once told me that one's best writing is often the product of fear and sorrow. One must experience to write well. If this is true, then my writing can only get better because when I decided to take this little adventure to California, the fear built up in me day by day, and eventually culminated in a horrific flight (despite the spectacular view) and a serious case of jet lag.

For those of you who are unaware of my current plight, I have placed myself at California State University at Northridge for a semester exchange. Though I am excited to see a new way of life and bask in warm air (in shorts, I might add), my last week in Jersey proved that I had found more cons than pros in my current situation. I spent my final days in Jersey crying every single night, as my "brother" can attest. Getting prepared to go was a bit like preparing myself for the electric chair, and over and over, I asked why I was doing this to myself. I felt a void in my heart as I said goodbye to family and friends.

Finally, with the help of those who are close to me (you know who you are), I realized that this would make me a better person and help me grow as a writer; yes, experience is the best teacher. No, this doesn't take away the fear or hurt, it only makes them easier to bear.

So, as I spend the next four months trying to understand an alien culture, I will attempt to share my experiences with the WPC community and give all of you a taste of life on the West Coast.

**Dor't miss...**

**The Midday Artists Series:** Thursdays at 12:30 p.m. in Shea Auditorium. Admission \$2 for students. Call 595-2371 for information. Next performance Feb. 4: "Composers, Synthesizers and Other Musical Instruments," featuring WPC electronic music professor Ron Mazlak.

**The Jazz Room Series:** Saturdays at 4 p.m. Feb. 7 through March 14 in Shea Auditorium. Admission for students \$5. Feb. 7 performance featuring Marvin "Smitty" Smith. Septet. Call 595-2371 for more information.

**The Art At Lunch Series:** Thursdays at 11:30 a.m. Feb. 11 through April 8 in Ben Shahn Galleries. Admission for students \$3. Feb. 11 lecture, "Theodate Pope Riddle: A Lone Woman Architect at the Turn of the Century" featuring WPC associate professor of art Sharon Dunlap Smith.

**Art Exhibits:** Feb. 8 through March 12 in Ben Shahn Galleries. "Art: New Jersey" juried exhibit featuring 14 NJ artists. Reception Sunday, March 7 3-5 p.m. Call 595-2654 for more information.

**New Music Festival:** Mondays at 8 p.m. in Shea Auditorium. Feb. 1 performance will feature WPC Alumni. Call 595-2371 for more information.

**Afternoon Jazzery:** Thursdays 11 a.m. -12:30 p.m. in Billy Pat's. Free performances by student groups.

**Theatre Auditions:** Gypsy Tuesday, Feb. 16, 7-11 p.m., Hunziker Theatre. Call 595-2335 for more information.

**African Heritage Month:** See page 12 for full listings.

(Photo by Valerie Wood)

# LET COCA-COLA SEND YOU AND A FRIEND TO DAYTONA BEACH FOR SPRING BREAK '93



## WIN INSTANTLY!

You could win: • A trip for two to Daytona Beach for Spring Break including special VIP access to MTV Spring Break Taping!

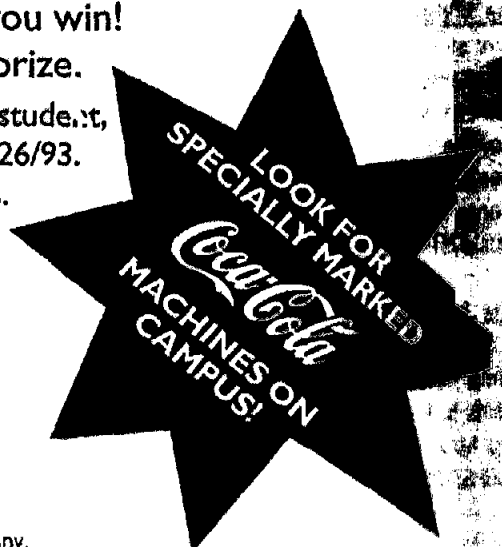
• T-shirts • Beach Towels • Squeeze Bottles

Look for specially marked vending machines on campus. If you purchase a Coca-Cola product that has a winning game piece attached from one of these machines, you win!

Simply peel off the game piece and mail it in to claim your prize.

Overall odds of winning: Approximately 1 in 24. No purchase necessary. You must be a college student, 18 years or older, to be eligible for prizes. Prizes must be claimed by 3/26/93.

See official rules on specially marked vending machines for details.



"Coca-Cola" and the dynamic ribbon device are registered trademarks of The Coca-Cola Company.

# Sounds from the Inside...



By Mike Garr  
INSIDER EDITORIAL ASSISTANT

It seems that trag brings about great things in rock. For example, the death of Mer Love Bone frontman Andr Wood brought together Pearl Js Stone Gossard, Jeff Ament anike McCready with Soundgar's Chris Cornell and Matt Camero create the critically lauded and t-selling (in re-release), Temple the Dog collection.

In local terms, the to end of Central Jersey post-mi gems Mercy Circle, has given to three projects, including Mi Needs Women.

"Just what the hell is this *Insider* anyway?"

As far as we can tell, it's The Beacon entertainment wky, a magazine born out love and insanity, a falous addition to any successful résumé, a pla of political intriguing familial affecti A publication wh promotes the abnormally rapid growth of iting skills, schedule-igling abilities and netrking opportunities for stout of heart. If you nt to know more or ft you can track it, contSheli, Mike or Dom at 5-2248, or be brave ench to join us at our wky meeting, Tuescs at 3:30 p.m. in Theacon office, Student nter room 310

Mercy Circle disbanded indefinitely, shortly after a shooting incident that rendered Mercy Circle drummer Mitch Knauff partially paralyzed. Guitarists Shawn McCabe and Jack Roberts got together with Motel Shootout's former rhythm section to form the first substantial post-Mercy Circle project.

*The current demo is regrettably brief, but drives home the point with sparse production techniques and hard-to-tell tales from the twenty-something generation—MG*

Mars Needs Women's sound contains elements of some currently popular "alternative" guitar bands. However, disregarding labels and pigeonholes, MNW blend pummeling guitar riffs with bratty punk/pop vocals and harmonies. Their current demo is regrettably brief, but drives home the point with sparse production techniques and hard-to-tell tales from the twenty-something generation.

The lead track, "Nothing," has a subtle intro followed by heavy guitar work in the Sabbath/Nirvana mode.

"Not Enough" and "Without" are hindsight evaluations of relationships gone wrong that feature irresistibly catchy and angst-ridden choruses that are a joy to shout along to.

"Laughing" is clearly the standout track of this limited bunch. It's sort of a thumb up the nose of those who have nothing better to do than to tell you you're worthless; "Now you're laughing at me/ I can't hear you." Who needs 'em anyway.

Hopefully this demo will serve as a teaser for bigger things from Mars Needs Women. You can see their cathartic live show in and about their hometown of New Brunswick. An independent 7-inch single is in the works. Stay tuned for updates.



By Joe Brennan  
STAFF WRITER

With the proliferation of Seattle grunge bands in the past few years, it's gratifying to hear a band who choose to be a little more lyrically esoteric, as well as progressive in the music they produce. *Images and Words*, the latest release from ATCO recording artists Dream Theatre, combines mystical lyrics and venturesome music that vibrates with the influences of Queensryche and Yes.

The most dynamic song, "Metropolis: the Miracle and the Sleeper," focuses on the mysterious aspects of love, and how being deprived of it can influence your philosophy of life. The song escalates from a basic heavy metal drive into an exhaustive battery of time changes. It includes a section where every player takes a solo, while the keyboard and guitar double a fugue-style melody. John Myung's solid bass playing and Mike Portnoy's unbridled drumming add a strong rhythm section to this and every other song on the album.

*...It's gratifying to hear a band who choose to be a little more lyrically esoteric, as well as original in the music they produce—JB*

The first track, "Pull Me Under," is about keyboardist Kevin Moore's acceptance of his father's death by being in tune with and aware of how everything in nature perishes eventually. The song highlights Moore's classically influenced style and guitarist John Petrucci's dexterous playing style. The two complement each other with a motif of hard-driving power chords, with unobtrusive keyboard textures to make the music more melodic.

The third track, "Take the Time," expresses the band's views about how one should be driven toward introspection and quiet reflection in coping with "the weight of the world." Vocalist James LaBrie's falsetto stands out in this song, which varies from an upbeat tempo with thundering double bass to a more groove-oriented phrasing.

Dream Theatre seems like a band which will continue to produce quality music. Progressive 70s bands like Rush and Yes have fallen into traps of lethargy, where their music lacks any original impulse. Dream Theatre should persevere.



By Mike Garry  
INSIDER EDITORIAL ASSISTANT

Soul Asylum's overnight success has been 10 years in the making, so essentially *Grave Dancer's Union* is merely the latest effort in the career of a consistent, yet largely unrecognized, rock band.

Hailing from the same scene that gave the world The Replacements and Hüsker Dü, Soul Asylum has been through three record labels and are currently with Columbia, which has done more for the band than Twin Tone and A&M combined. The band's sound is an ungodly blend of seemingly opposing types of rock influences such as early Kiss, The Hooters, AC/DC, Hank Williams and R.E.M.

There are several types of Soul Asylum songs: solid rockers, mid-tempo, electric numbers, pseudo-country ditties and completely over-the-edge blow-outs.

*...fiery stuff like "99%" and "April Fool" are more suited to Pirner's clever word-play and Dan Murphy's tasty, minimalistic leads—MG*

Songwriter/vocalist/guitarist Dave Pirner is the central creative force in the band; he is found to be relatively mellow on *Grave Dancer's Union*. Radio-ready tracks like "Somebody To Shove" and "Black Gold" are filled with hooks and emotion and are currently visible via MTV.

The ballady, acoustic selections tend to drag on a bit, while the more radical, fiery stuff like "99%" and "April Fool" are more suited to Pirner's clever word-play and Dan Murphy's tasty, minimalistic leads.

This is a worthy addition to the Soul Asylum catalog and is already the most commercially successful album they've done. If you like this one there's plenty more waiting for you at your local record store.

# African Heritage Month

William Paterson College

February, 1993

## Defining and Celebrating the African-American Experience

<p>Mon. Feb 1</p> <p>12:15 pm S.C. Ballroom</p> <p>2:30-4:00 pm S.C. Ballroom</p> <p>Thur. Feb 4</p> <p>12:00-2:00 pm S.C. Ballroom</p> <p>9:30-1:30 pm S.C. Ballroom</p> <p>Sat. Feb 6</p> <p>9:30-1:30 am S.C. Ballroom</p> <p>Tues. Feb 9</p> <p>9:00 pm S.C. Ballroom</p> <p>Wed. Feb 10</p> <p>3:30-5:30 pm</p> <p>Thur. Feb 11</p> <p>4:30-6:00 pm Pal, S.C.</p> <p>Fri. Feb 19</p> <p>11am-8:30pm S.C. Ballroom</p> <p>5:30-8:30 pm S.C. Ballroom</p> <p>Sat. Feb 20</p> <p>7:00 pm-midnight S.C. Ballroom</p> <p>Mon. Feb 22</p> <p>8:00 pm S.C. Ballroom</p> <p>Wed. Feb 24</p> <p>7:00-9:00 pm 203-S, S.C.</p> <p>Fri. Feb 26</p> <p>7:00-11:00 pm Shea Auditorium</p>	<p><b>Keynote Address:</b> Self-Annihilation A Threat to the African-American Community by Professor Amos N. Wilson, College of New Rochelle Bronx, New York Admission: FREE</p> <p><b>Entertainment:</b> The Kokomos A Contemporary Igerian Band Co-Sponsors: S/B and Greek Senate Admission: FREE</p> <p><b>Caribbean Luncheon</b> Cost: \$4.00 Students \$5.00 Faculty and Staff Sponsor: Caribbean Students Association</p> <p><b>BSA Scholarship Party with DJ</b> Admission: \$3.00</p> <p><b>A Bob Marley Day Celebration</b> Admission: \$3.00/PC I.D. \$5.00 w/o WPC I.D. Sponsor: Caribbean Students Association</p> <p><b>SAPB Movie: "Boomerang" w/Eddie Murphy</b> Admission: \$1.00</p> <p><b>Art Exhibit Reception "Confronting the Choice Between the "I" and the "We"</b> Sponsor: Office of Minority Education Admission: FREE Art Gallery Lounge, S.C.</p> <p><b>Black Love Is: A Dialogue Between the Sexes</b> Sponsors: BFA and SABL Admission: FREE</p> <p><b>Ujamaa Market and Manifest</b> Sponsor: Delta Sigma Theta Sorority Entertainment: Paterson Youth Corps. Admission: FREE BFA Scholarship Disco Admission: \$3.00 Student \$6.00 Faculty &amp; Staff</p> <p><b>NAACP Semi-Formal Ball / Night of Black Elegance</b> Admission: College Students-\$10.00* NAACP Members-\$10.00* Faculty &amp; Staff &amp; Non-Students-\$20.00* *(per person)</p> <p><b>Struggles for Freedom</b> A Theatre Piece with Music by Douglas Turner-Ward Produced by Dean George McCloud, School of the Arts &amp; Communication Sponsor: Department of African, African-American and Caribbean Studies Admission: FREE</p> <p><b>Black History Knowledge Contest</b> Admission: FREE Sponsor: NAACP</p> <p><b>A Night for Family and Friends</b> Featuring: Student Fashions and Talent: "A Death In the Family," a one-act play by Dr. J. Samuel Jordan; and a Reception following the Performance Sponsor: SABLE Admission: \$2.00 Visitors</p>
--	--

For Further Information Contact:  
Office of Minority Education (201) 595-3101

# Every Mother's Nightmare returns

By Dawn M. Marecki  
WEST COAST CORRESPONDENT

"It was a long wait, but I think now I'm glad that we went ahead and waited." Guitarist Steve Malone reluctantly admits that fans of the Tennessee quartet, **Every Mother's Nightmare**, have had quite a wait since 1990, when the band's self-titled debut album was offered to the rock world as an alternative to the

of Pain," the first single, released on Halloween. Though the title may seem trite, the fiercely rocking tune deviates noticeably from the "wide-open" guitar style on **Every Mother's Nightmare's** debut. According to Malone, the band has filmed a video for the song and hopes to receive airplay on MTV's "The Headbanger's Ball."

"Already Gone," the second single, is a quasi-ballad, spiced up a bit with strong guitar work. The song was written, says Malone, about a friend, and though the lyrics are fictitious, they are based loosely around this character. Malone believes that the lyrics in "Already Gone" took the band to a new level, and had a strong impact on their individual personas.

"The first time we played it live," Malone admitted, "it kinda choked all of us up a little bit."

**Every Mother's Nightmare** also debuted three songs, "Bang (to the Bone)," "I Hate Myself" and "Breakdown," in New Jersey, with Jack Ponti, who has worked with **Bon Jovi** and **Skid Row**. Malone explains that the record label, Arista, pushed the band in an effort to repeat the success of their debut single, "Love Can Make You Blind," to produce songs suitable for national airplay. To accomplish this, Malone explained Ponti was an asset.

"If I Had My Way," my personal favorite, is a technically-tight, melodic venture, and along with "I Needed You," represents **Every Mother's Nightmare's** offering of ballads on this second effort.

"Good Die Young," a vicious number, allows Malone a chance to exhibit his technique in a mind-blowing and impressive solo. Though Malone is humble about his work, he admits that the song gave him an opportunity to experiment a bit and enjoy his own talent.

"Like every guitar player, I still don't feel like I'm at the level I should be at right now," offers the guitarist. "But I'm fairly content with this record."

*...Track for track, the album shows substantial growth, both lyrically and technically, from sentimental ballads to fierce rockers—DMM*

bland commercial metal of the past two years.

Finally, on Jan. 12, **Every Mother's Nightmare** (Malone; Rick Ruhl, vocals; Jim Phipps, drums and Mark McMurtry, bass) unleashed their second effort, *Wake Up Screaming*, on fans poised with bated breath.

The band once again recorded in Memphis, TN at Kiva Studios, with producer Jim Gaines, a resident of the city.

"We didn't like the idea of going somewhere like New York or L.A.," said Malone. "I don't know if that would have been beneficial to the band or not: to have us taken out of our element."

Track for track, the album shows substantial growth, both lyrically and technically, from sentimental ballads to fierce rockers.

"I hope an improvement is apparent," remarked Malone. "We didn't want the record to just be a gradual progression, we wanted it to be a definite step forward."

The album kicks off with "House

As on their debut, **Every Mother's Nightmare** offers a cover tune on *Wake Up Screaming*. According to Malone, the selection of "Tobacco Road," a jazz classic, was Arista's. The band, reluctant at first, agreed to make a solid attempt with the tune, and in the end, produced a strong rocker sure to be a crowd-pleaser.

"Slip and Fall," the only song written by an outside composer for the band, is a steady, rhythmic song that displays a bit of diversity and gives a listener an alternative to a "harder" song like "House of Pain."

The diversity on the album is evident through a single listen, and fans who were impressed with **Every Mother's Nightmare's** debut will surely find *Wake Up Screaming* an impressive follow-up.

"People that are into **Pantera** may go 'a couple of songs are cool, but a lot of it's too wimpy for me', but then again, a lot of people that are

into **Firehouse** are gonna go 'a couple of songs are cool, but the rest is too thrashy sounding or heavy,'" Malone compared.

**Every Mother's Nightmare** plan to tour extensively with this record, hitting local clubs like the Limelight and Studio One, said Malone. Though the guitarist is unsure whether the band will headline or open, he is eager to hit the club trail.

If you have the opportunity to see **Every Mother's Nightmare**, don't pass it up. They are an explosive live act and pleasingly courteous to their fans.

I once read that the band never passes up an opportunity to talk with fans, and I can personally vouch for this. It's not too often that one gets to see a band that is as fond of their fans as it is of their instruments.

(Thanks to Jonathon Grevatt at Arista Records for arranging the interview with Steve Malone)

## "American Reunion" excludes the masses

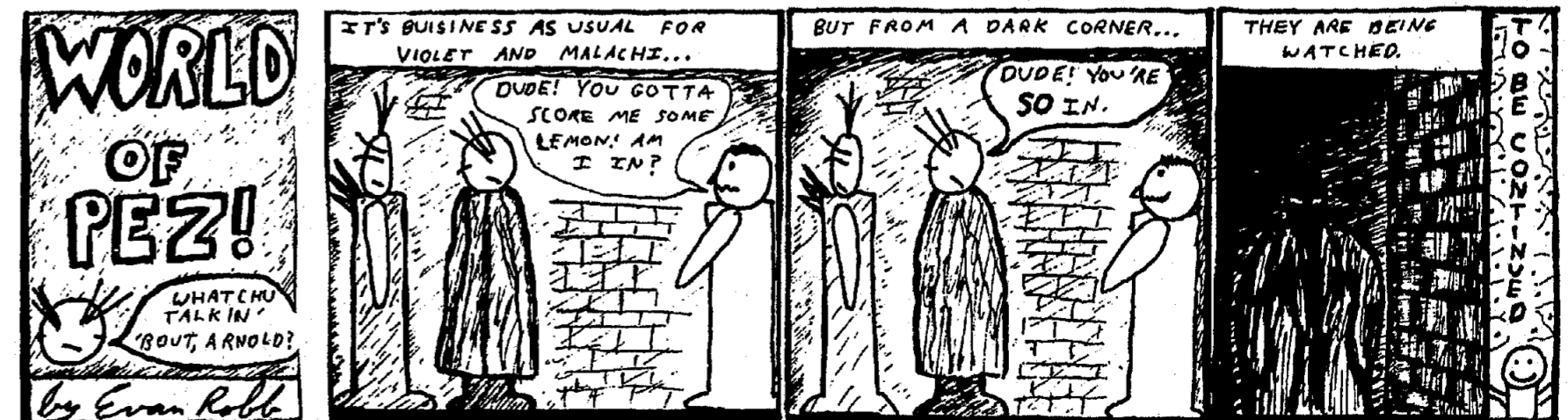
FROM PREZ, PAGE 9

For the first time, I had been personally invited to by Bill (and yes, I can call him that). I chose the Gala because I'm generally bored by parades, the Dinner cost \$1,500 a head—although I was allowed to invite up to ten people to accompany me, the Ball didn't interest me, and I thought the Swearing-In would prove more annoying than rewarding.

Seated a mere 20 rows or so away from Bill (okay, so it's Worlow, not Clinton), I recognized the entire event was directed to the Presidential box, and no one else. Every joke, every comment from the stage, every song, every movement was directed at that box, and the people who paid a minimum of \$100 and as much as \$1,500 were inconsequential. This was a show for the President and his family, and not for the masses.

**Fleetwood Mac** was reunited for the Gala, and their song "Don't Stop Thinking About Tomorrow" closed the show. As the stage filled with every celebrity in attendance, including our new President and V.P., who said nothing (but did wave a lot), the crowd went wild. The audience, who seemed to start clapping after the second note of every song that evening had bought the entire Clinton-Gore reunion idea completely. Apparently these people didn't need to be entertained, they had come to the event already sold.

I'm not so easily pleased, and I found a need to be a part of the event, and not just a witness to it. There was no feeling of a reunion there, in fact the only thing reunited was **Fleetwood Mac**.



**Photographers  
needed**

**Call  
The Beacon  
595-2248**

**Must have  
camera,  
personality  
optional**

# RECREATIONAL SERVICES SPRING 1993

## INTRAMURALS

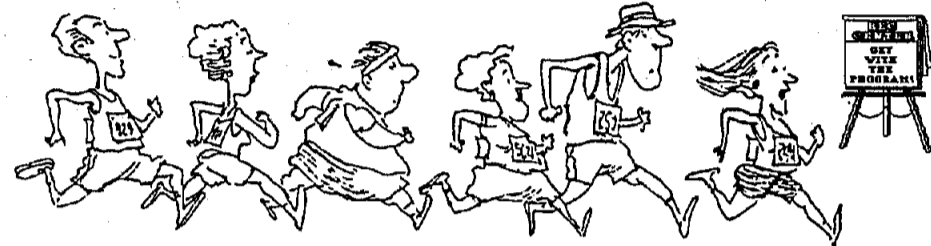
BASKETBALL (5 ON 5)	2/2
BB OFFICIAL'S MTG	2/1
BB OFFICIALS MTG	2/3
BB SCHICK TOURN.	2/5
BB 3 PT. SHOOTOUT	2/17 & 2/18
INDOOR SOCCER	2/14
RACQUETBALL (S)	2/16
RACQUETBALL (D)	2/16
SOFTBALL (M,W)	3/9
SOFTBALL COED	3/30
FLOOR HOCKEY	3/23

Note: Most Intramural Sports have a nominal fee payable upon registration. Dates are subject to change without notice.

## SPECIAL EVENTS

AEROBICS	2/1
SCHICK SUPERHOOPS	2/5
3 PT. SHOOTOUT	2/17, 2/18
DOUBLE DARE	2/26
SPRINGFEST EVENTS:	
AEROBICS SUPERCLASS	TBA
BEST BENCH	4/19-23
BEACH & BOARDWALK	4/29

REQUIREMENTS / GUIDELINES FOR PARTICIPATION IN ANY EVENT OR USE OF THE FACILITIES MAY BE OBTAINED AT THE REC CENTER CONTROL DESK.



## REC CENTER

BUILDING HOURS:	
M-T-W-TH-F	8AM TO 11PM
SAT & SUN	9AM TO 9PM
PHONE	595-2777

## POOL INFO

POOL IS LOCATED IN WIGHTMAN GYM.	
HOURS*	
M-T-W-TH-F	11:00AM- 2:00PM
M-T-W-TH-F	7:30PM- 10:00PM
SAT & SUN	12NOON - 4:00PM
*Subject to change due to classes & athletic events.	

## TICKETMASTER OUTLET

HOURS OF OPERATION:	
M-T-W-TH-F	9AM TO 10PM
SAT & SUN	9AM TO 8PM
PHONE	595-2032
CASH ONLY!!!	CASH ONLY!!!

# LOOP LOUNGE



373 BROADWAY, PASSAIC PK., N.J., 201-365-0807

## LETTERS CONT.

### WPSC seeks talented volunteers

Editor, The Beacon:

WPSC-FM needs your help. I normally would be writing a letter asking the students at WPC to listen to our station at 88.7 FM. We have a great mix of Modern Rock music throughout the weekdays and if you want to listen to other types of music you can hear Reggae on Sunday afternoons, Techno on Wednesday nights, Metal on Saturday and Sunday nights, and much more. But you cannot listen to WPSC-FM unless the station is on the air. We are facing a semester in which there are not enough talented people to fill all the air shifts at the radio station. My appeal is to students in the Communication department or anyone else that is talented, who wants to have some fun and has the desire to learn. I am asking those people to come forward and volunteer their help. The more people that get involved the more this station can do to serve our listeners.

Isolated over in Hobart Hall (Yes, WPSC-FM and WCRN cable radio still operate in the building despite all the construction), some people might have forgotten about us. But we have not forgotten the campus. We entertain and inform the campus as well as thousands of potential listeners in North Jersey. Where else are you going to hear a morning traffic report that tells you the road conditions coming into WPC and which parking lot to go to because it has not filled up?

WPSC-FM has a great bunch of people and joining the organization would help you in any future career. Even if you are not interested in radio as a career this is a great learning experience. You can learn to work with people and help organize station activities that will benefit everyone that listens to WPSC-FM.

There are requirements to joining WPSC-FM but you do not have to be a Communication major. If you are interested or just curious come to our meeting on Sunday, February 7. It will take place at 7pm in Room 203 or the Student Center. I will set aside time to explain the requirements for station membership.

Drew Jacob  
General Manager, WPSC-FM

### Professor asks for explanation

Editor, The Beacon:

I am hoping that The Beacon article of 12/14/92 about the detention of James Ruffini is incorrect. It reads (in part) "The officer told Ruffini he was being questioned because Campus Police received a complaint about someone speaking against government funding." This can't be true!!! It reads like something out of Orwell's 1984. Since when is it a crime to speak out against government funding? Do the Campus Police really respond to such complaints? Why?

The Beacon article continues by telling us "The person who made the complaint was brought in to identify Ruffini and told the officer that Ruffini was the wrong person." Who was this person who made the complaint? We should know his/her name. I could fill six editions of The Beacon with complaints about government funding. How about the billions spend on Operation Desert Storm? etc. etc. My office is Matelson 313 if anyone desires to have the Campus Police arrest me. What the hell is going on at WPC? I happen to think that it is part of our "education" at a college to have many points of view expressed and for us to engage in debate. Let's legalize debate and dissent at WPC?

Terence M. Ripmaster  
Professor of History

### Campus cops help visitor

Editor, The Beacon:

I would like to thank Campus Police Officer Robert Paylter #18 and Assistant Chief John Archibald for coming to the rescue after I locked myself out of my car.

I think it's about time that something positive should be written about the campus police. These men are respectful and conscientious and they do a great service for us. They deserve some recognition for their good

deeds.

Dan Titus  
Crisis Counselor  
Lakeland/Andover School

## Editor's Notes

### Welcome Back

The Beacon staff welcomes back the WPC community and looks forward to being the campus news source during the spring semester. The Beacon office is located in Student Center 310 on the third floor. General meetings are held every Tuesday at 3:30 pm. Anyone interested in writing, photography or newspaper layout should attend the next meeting. No experience is necessary. All majors welcome.

### Letters to the Editor

Correspondence from students, faculty and staff is always welcome and is in fact encouraged. Letters should be addressed to the editor-in-chief and be as concise as possible. The editor-in-chief reserves the right to edit all letters for space and grammar.

### WPC Forum

WPC Forum is a regular contribution by the SGA attorney on various law-related topics that affect students. The SGA attorney is available for free student counseling. Call the SGA office for details.

### Unplanned Pregnancy?



FREE

Confidential Help and  
Pregnancy Test at  
**BIRTHRIGHT**  
456 Belmont Avenue  
Haledon  
956-8215

19 W. Pleasant Avenue  
Maywood  
(minutes from Bergen Mall)  
845-4646

**CANCUN Nassau, Paradise Island**  
Spring Break Vacation  
From \$299  
Organize a small group for free trip  
Call 1 (800) GET-SUN-1  
**Paradise Island BAHAMAS**  
**NASSAU**

Expert and Reliable  
Word Processing  
in  
English  
Spanish/French  
Italian/Portuguese

Layout, typesetting,  
and laser printing  
also available

for  
Academic Papers/  
Manuscripts/  
Resumes/  
Business Documents

REASONABLE RATES  
790-6938

Insurance & Financial  
Services  
**Considering  
A Career?  
Come To The Rock!**

For a sales or management career offering a chance to earn more and grow faster, look no further than The Prudential. You'll also receive excellent benefits, quality training and the prestige of working with a leader in the financial services industry. This is a regional opportunity for those wishing to work in North Jersey.

For more information about "Rock-Solid" opportunities at The Prudential, forward a resume to:

The Prudential  
Attn: Leslie Birenbaum  
Director of Personnel  
1445 Valley Road, 4th Floor  
Wayne, NJ 07470

The Prudential  
An Equal Opportunity Employer MF



**PREGNANT?  
NEED HELP?**

WE CARE.  
CALL US.  
423-9499  
Abortion  
Action  
Alternatives

FREE PREGNANCY TESTING  
AND COUNSELING  
1120 GOFFLE ROAD  
HAWTHORNE, NJ 07506



THE LOVED ME



# Conlee leads improving squad

FROM PIONEERS PAGE 17

yond the three-point stripe. Conlee was also named NJAC Player of the Week during the week of Jan. 11, averaging 25 points, while shooting an incredible 69 percent from the

field.

Conlee's supporting cast includes the big men in the paint, 6'4" senior forward Robert Barnes and 6'2" senior forward/center Andrew

Daniels. Barnes, in limited action due to an injured knee, has made the most out of his playing time, converting 67 percent of his shots. Meanwhile, Daniels is a strong force inside, with a

respectable 15.8 scoring average while grabbing 9.7 rebounds a game, second in the NJAC.

The team has been engineered by its two outstanding guards, junior point guard Mike Lauterhahn and junior shooting guard Charlie Pino. Lauterhahn leads the team in assists (5.4 average) and steals (1.9 average), while Pino is an all-around player, averaging 8.7 points, 2.8 rebounds, 5.2 assists, and 1.4 steals. Along with

a solid bench that consists of sophomores Chr Annibal, Allen Doss, Donald Green, and Corey McCoy, the pioneers are certainly projected to be one of the up-and-comin' teams in Division III.

"Overall, I am pleased at how we have improved as a team," commented Coach Dallessio. "The team has progressed fairly consistently. They're playing pretty well right now, but I think they can get better."

# Swimmers end home season

FROM SWIMMERS PAGE 18

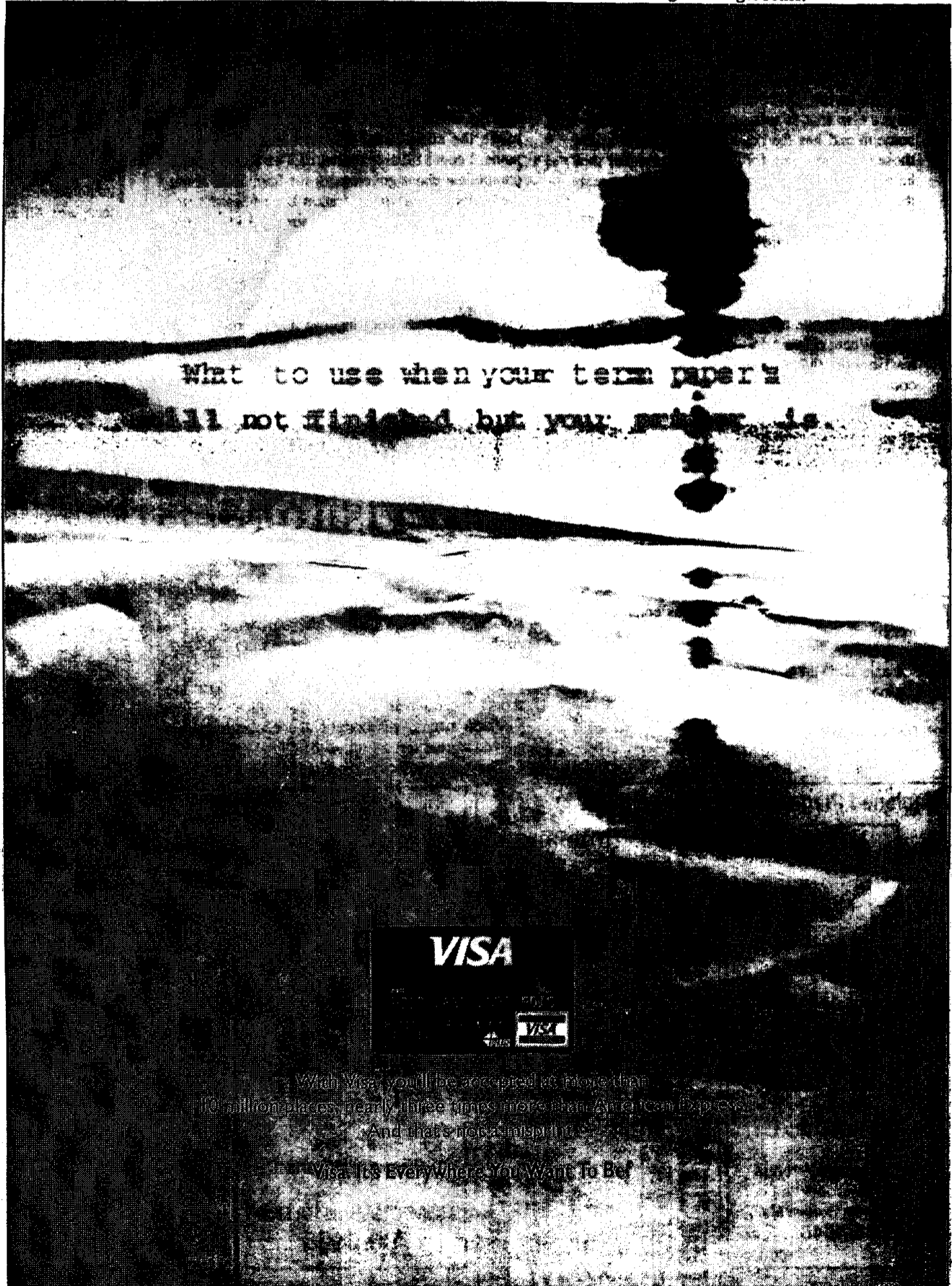
Sweetman, the three took the 400-meter relay.

The Lady Pioneers were also successful in the 100-meter freestyle and diving events. Alicia Hugus scored her first freestyle victory with a 2:08.01 time, while teammates Sweetman and Melissa Reeber tied for second at 2:17.08. Sheri Glenn and Jennifer Conte finished second and third, respectively, in the one-meter diving match, but took first and second in the three-meter event.

meter freestyle performances. Seniors Rosenthal, Cooce, Dickman, Jeremy Travers,

Bedford, Conte, Glenn, and Rachel Goodall were thanked with special key chains.

The swim teams marked Parents' Day by bestowing honors on individual team members. Rosenthal, Gazdalski, and Connie Wassberg received All-American honors for their top 1,650-meter freestyle, 100-meter butterfly, and 500 and 200-



# Albies named Coach of the Year

Jeff Albies, who coached the 1992 Pioneer baseball team to a 36-7 record and the NCAA Division III national championship, has been named Diamond Sports/ American Baseball Coaches Association National Coach of the Year for Division III.

Albies was selected by a vote of college coaches and was honored by the ABCA at a national convention in Atlanta on January 9.

Entering his 19th year as head coach of the Pioneers, Albies possesses a 471-205-8 record, ranking him 10th in victories among active Division III baseball coaches.

The Beacon Feb. 1, 1993

# Pioneers show major improvement

By Joe Ragozzino  
CO-SPORTS EDITOR

A year ago, the WPC men's basketball team was suffering one of its worst seasons in school history, finishing at a horrendous 6-19 overall record while being the laughing stock of the NJAC at 4-14. Now, one year later, the Pioneers have quickly gained respect from their opponents, as first-year Head Coach Jerry Dallessio and his squad are making a serious bid at the conference playoffs.

have dramatically improved with a current overall record of 10-7, fifth in the NJAC standings at 7-4.

The team has shown tremendous optimism that began a few weeks ago. After losing three straight games on the road, the Pioneers quickly turned their season around, winning six of its last eight games. The winning role could not have come at a better time, as the team prepares to embark on the toughest part of its schedule.

"Our confidence level as a team is at its height. I definitely

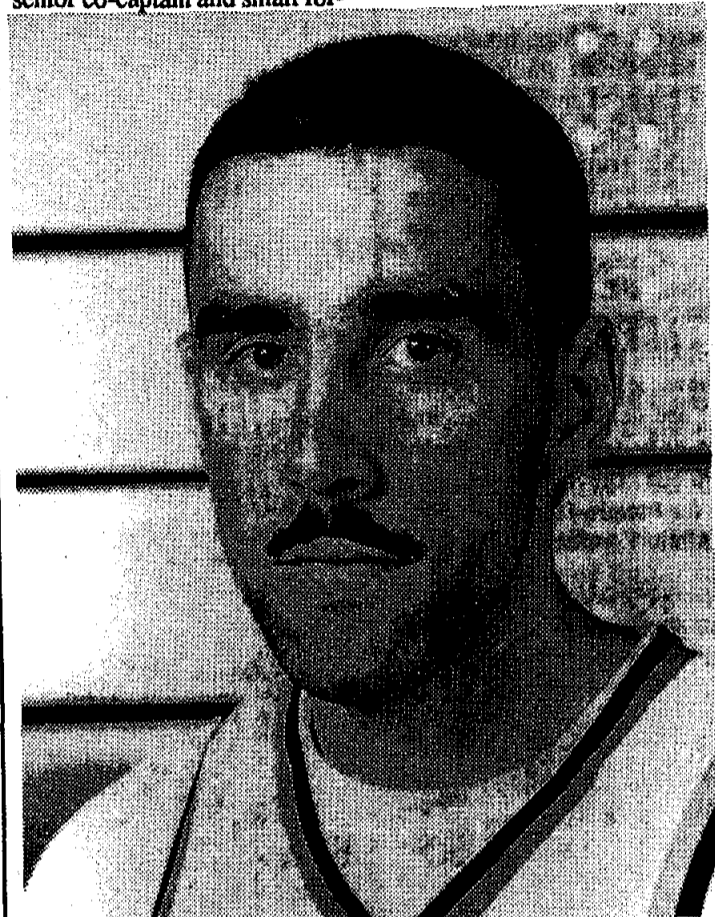
see this confidence level increasing. I feel that it will enable us to compete against the better teams," replied Coach Dallessio.

In the NJAC, the Pioneers are one of the top shooting teams. WPC ranks second in scoring offense with an average of 73.3 points a game, and field goal percentage, hitting 47.3 percent from the floor. Both marks are right behind undefeated Rowan College, which is ranked number one in Division III competition. The Pioneers are also first in free throw percentage (70.9 per-

cent) and second in three-point field goal percentage (37.9 percent).

A major part of this high-powered offense comes from senior co-captain and small for-

ward Bill Conlee, who leads the conference in scoring (22.3 average) and three-point field goal percentage, shooting a phenomenal 49.4 percent be-



Pioneer basketball co-captain Bill Conlee

## WPC Students...

Be an

# ORIENTATION LEADER

## You will:

- Participate in leadership training
- Work with Orientation '93 (August 1993)
- Learn invaluable communication and motivation skills
- Earn \$125 for your time and hard work!

## INFORMATION SESSIONS

February 3	12:30pm	SC324-5
February 4	12:30pm	SC326

Applications available in Student Activities Office, SC315, 595-2271

Deadline: Noon on Friday, February 5, 1993

Commuters Strongly encouraged to Apply!

## WPC Faculty & Student Discount

### Bergen Tire Automotive Center

15% discount on automotive service with a WPC - Faculty or Student Identification.

### Special

\$13.95 Oil, Lube and filter  
\$19.95 Winterize Special

We offer complete automotive service.

Brakes Alignments  
Tune-Ups

Shocks Tires

Preakness Shopping Center  
Wayne, New Jersey  
201-696-4005

S  
a  
v  
e

S  
a  
v  
e

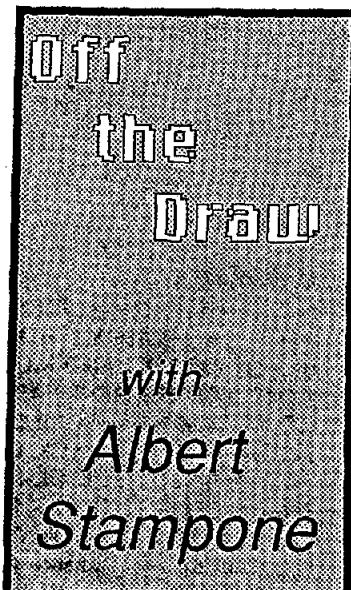
The Beacon Feb. 1, 1993

# Mario cross-checked by cancer Hodgkins' disease sidelines Penguins' Lemieux

At first, it simply was too shocking to believe. Could it actually be true? Was it just pressroom rustling, bred from the same fields where jocular trade banter is always alive and kicking? Or was it the inconceivable truth about a star-crossed virtuoso, playing on a team where tragedy is no stranger?

Mario Lemieux, the best hockey player in the world, has Hodgkin's disease; and it is unbelievable. It always is when you are dealing with cancer. Not only for fans of Mario Lemieux, the hockey player, but for friends, family and fans of Mario Lemieux, the person.

For these people, the ones closest to the person stricken, it always is.



Unfortunately, the Pittsburgh Penguins have become all too familiar with cancer over the past few seasons. For every on-ice positive the team has accomplished, they have seemingly suffered an off-ice debilitation.

In November of 1991, five months after he coached them to their first Stanley Cup, the Penguins lost Bob Johnson to brain cancer. Penguin netminder Tom Barrasso's five-year-old daughter, Ashley, nearly died from a form of childhood cancer called neuroblastoma when she was two.

The after shocks of the illnesses certainly has taken a chaotic toll on the team mentally, as well as on the ice. Barrasso played in a career low 24 games during the 1989-90 season due to the leave of absence he took from the team to be by his daughter's side. The Penguins missed the playoffs that year. They also hovered at a mediocrity level throughout the entire 1991-92 regular season after Johnson's death, until the playoffs.

And now, Lemieux. He underwent surgery to remove one cancerous lymph node from his neck Jan. 8. Next is about five weeks of radiation

treatment followed by a recovery period of two to three weeks to recuperate from the side effects.

Mario Lemieux will now attempt to clear the one obstacle that has been able to stop him. The goal for the upcoming months deals not with pucks and plays. It is one of rebound and recovery.

Just as it was so inconceivable to think an athlete of Lemieux's stature could have cancer, it is just as inconceivable to never see him play again. Even more so, to not see him well again.

## Bachonski makes mark for Lady Pioneer squad

FROM BACHONSKI PAGE 20

would like to try out for another league, either semi-professional or a pick-up league. She hopes to become a teacher at either the high school or elementary level, as well as coach basketball.

"I hope to better children's futures as a role model. Being a coach, you are a part of their lives. If I am a good example, hopefully they will strive to be better, though they have to remember to concentrate on academics also. Some kids rely on basketball, and don't realize what it's all about."

Like her favorite NBA player, Michael Jordan, Jill Bachonski is a player to watch.

She is dazzling on the court, with her hard-nose play and sheer determination. Although her college basketball playing days are almost over, her contributions to basketball have only just begun. Her positive attitude and dedication to children will carry her a long way. "Even though it's my senior year, I have played every

game to win, and I don't want it to end. If you do that you'll appreciate it more. Even though you don't realize it while you are playing, when looking back you'll miss it."

Just as Jill Bachonski will miss basketball, WPC Lady Pioneer's basketball will miss her.

## Pioneer bowlers capture titles, win scholarships

WPC men's and women's teams both captured championships in the Fifth Annual Brunswick Northeast Collegiate Showdown bowling tournament held December 27-28 at Brunswick Cross Keys Lanes in Turnersville, New Jersey.

After eight standard games and five Baker games (when teams of five bowl two frames per person), WPC led the Men's Division by three points over Michigan State University. The Pioneers took home the first prize of \$1000 in scholarship monies, which includes the \$500 scholarship for quali-

fying first upon entering the Baker games.

In the Women's Division, top-seeded WPC won the title and a \$500 scholarship by defeating Erie Community College in the final game of the Baker format stepladder finals.

A total of \$8700 in scholarships were awarded to individual universities who competed in the Northeast Collegiate Showdown tournament.

A total of 28 men's teams and 12 women's teams competed in the tournament, sponsored by the Brunswick Recreation Centers Division of Brunswick Corporation.



Lady Pioneer standout Jill Bachonski

## Swimmers post wins

By Walter Elliott  
STAFF WRITER

The WPC men's and women's swim teams closed the home season by soundly beating State University of New York-Albany last Saturday at Wigham Pool.

Keyed by Mike Rosenthal's performance, the Pioneers won nine of 13 events, kenneling the Great Danes to a 138-92 team score. The defending N.C.A.A. freestyle champion won the 1,000-meter freestyle, 100-meter backstroke, and 500-meter freestyle competi-

tions. Rob Coonce and Keith McKelvey also highlighted the swim team's efforts. Coonce shared the 400-meter medley relay victory with Brendon O'Reilly, McKelvey, and Matt Woodworth before capturing the 200-meter individual medley and 100-meter breaststroke segments.

WPC's combination of Miller, Woodworth, Dan Dickman, and Ziv Baumel finished their meet by winning the 400-meter freestyle relay.

The Lady Pioneers virtually duplicated the men's perfor-

mance, outscoring SUNY-Albany, 135-93, winning nine events.

Lisa Bedford, Laurie Gazdalski, and Kristine Sinran gave stellar individual and joint efforts. Bedford won the 100-meter freestyle and the 100-meter backstroke. All-American Gazdalski set her personal best time of 25.29 seconds en route to winning the 50-meter freestyle as well as the 100-meter butterfly. Sinran notched their meet by winning the 400-meter individual medley and the 500-meter freestyle. Aided by Liz

SEE SWIMMERS PAGE 16

### PERSONALS CLASSIFIEDS

**Wanted:** Competent guitarist teach eager learner. Will pay-b WPC student probably not m If interested please call 389-954

**Wanted:** People to start a R Group D&D, GW and MSH. 4 908-789-1704 leave message ask for Kurt.

**Attention Residents and Commuters**—Be a part of the 1! Orientation Leader Team! Applications available in SC 315 or extension 2271. Deadline, No February 5.

**Jen (AST)**—Your the best big ter anyone could ask for. Than for all your love. Looking forw to a great semester. Love your the Caryann (AST) Nick (Leakey)—I miss you a I'll write Duff (Leakey)

**You - For all that men are we your sanity is worth more! Let have a calm , healthy, ss semester... after all it is our last gether. Love Imelda Your Sis In Pinkness To The Great Pam-mula- It going to be a long long lo semester and I suppose we're j crazy enough to enjoy it. Lo Imelda, the sister in Pinkness Burt- Thanks for the advice at the job! Someday when I can s and breathe again I'll really thar you. Just Kidding Love Ernie**

**CHILD CARE**—Responsible student needed to care for 2 young children in my Wayne home. 5 house, one day each week plus occasional evenings possible. Call 616-9018.

**FLORIDA SPRING BREAK**—7 nights Beachfront \$139-159 Quad. Deadline soon. RESERVE Rooms Now! Call CMI 1-800-423-5264.

**Child Care**—3 young preschoolers in our Wayne home. P.T. flex hours, warm, energetic with sense of humor. Call 305-8185.

**Speech Language Specialist**—Hourly-Excellent opportunity for college graduates enrolled in a masters program for Speech/Language Specialists to obtain experience. EOE/AA. Please call Dr. June Zabchin, Bergen County Special Services, 327 E Ridgewood Ave, Paramus, NJ 07652

**COMPUTER FOR SALE**—IBM Compatible (DTK) 80286/12, EGA Color Graphics, 1 Meg Ram, 32 Meg Hard Drive, 3 1/2 and 5 1/4 floppy drives, extras. \$525 negotiable. 778-3197 Ask for Rob. Calling All Clubs/Groups — Earn Serious Money -Your fraternity, sorority or other campus group can easily earn \$400 PLUS BIG BONUSES in one week. You pay nothing. Call 1-800-735-2077 ext. 320.

**Spring Break in Jamaica**—The Best Properties at the Best Prices--Negril/Montego Bay from \$469- Call 1-800-BEACH-15.

**N.T.E Tutoring**—also SAT's; English, Math, other subjects. Experienced, Certified, caring teacher. Excellent references. Call 447-4839

**STORAGE GARAGE FOR RENT** in residential area; One mile from campus; easy access; reasonable rate. Call 790-8815 after 6 p.m.

**SUBSTITUTES**—Aides-\$65.00 Per Diem (No Certificate necessary) Interpreters for the Deaf-\$65.00 Per Diem (No Certificate Necessary)/Nurses-\$95.00 Per Diem (NJ School Nurse Certificate or eligible for County Substitute License)—If you can't work full time, but would like to earn extra money...think about substituting! We need qualified, caring individuals to serve as substitutes in a school for special needs student. If you have 60 college credits you may qualify for a county substitute teacher's license. If you already have a NJ Certificate, please send copy with resume. EOE/AA. Send letter of interest to: Dr. June Zabchin, Bergen County Special Services, 327 E Ridgewood Ave, Paramus, NJ 07652

**HOUSE TO SHARE**—Female preferred. \$300 a month and 1/3 util. Call 427-7722.

**WANT TO PLAY GUITAR?**—Learn your favorite style. Pop, Classical, Rock, etc. Lessons in your home. Call 839-4712 Bob Berger. Affordable Rates.

**FREE TRIP TO CANCUN MEXICO—ORGANIZE A SMALL GROUP AND TRAVEL FREE. AS A COLLEGE REP WITH SUN BOUND VACATIONS. PRICES START FROM \$419.00. COMPLETE PACKAGES INCLUDES ROUND TRIP JET SERVICE, HOTEL TRANSFERS, 7 NIGHTS HOTEL, BEACH PARTIES, DAILY SUNSHINE, EXOTIC NIGHTLIFE, TEQUILA HAPPY HOUR BEACH PARTIES AND MUCH MORE. FOR THE BEST VALUE AND THE MOST FUN FILLED SPRING BREAK PACKAGE CALL 800-SUN TREK OR 800-786-8735 FOR FURTHER DETAILS AND RESERVATIONS.**

**Recession Buster**—Enhance your college resume with real work experience! Overlook Hospital is looking for sharp, articulate people to fill two unpaid student internships in a busy, high-profile, public relations department. Work 10-15 hours a week and gain experience writing releases, newsletters and other communications materials under professional supervision. You will also help with special events and marketing projects. Some clerical work is required, but we guarantee that this internship will provide you with portfolio materials. Hours are flexible. For more info contact Davinia Mears or Yvonne Clair Stecher in the public relations department at 908-522-2096.

**TYPE-RIGHT-825-1349-Complete Typing Services**—Word Processing, Computer, HP Desk Jet Printer, Modem. Term Papers, Dissertations. Fast Service-Reasonable Rates.

**Housing**—Huge room, furnished, own bathroom in beautiful Franklin Lakes home. FREE in exchange for 10 hours housework each week. Available now. Call Sally at 891-8040.

**JAMAICA SKI RAFT**—Organize a small group & travel free! Individual travel welcomed! Call Banchi Outdoor at 1-800-769-9660 for more info!

**Babysitter**—Responsible, caring woman to babysit part-time for my one year old daughter in my Lincoln Park home. Hours-flexible. References required. Call after 6:00 p.m. Teresa Felcher-633-1474.

**FUNRAISER**—All it takes is a small group with a little energy and lot of excitement to earn \$500 to \$1500 in just one week! Call 1-800-592-2121 ext. 313.

**STUDENT REPS WANTED!!!**—Market Spring Break Packages for a Prestigious and Reliable Travel Co. & Earn Free Travel, Cash, & More. Call Diana Now! 800-925-8500 or 212-679-7699 (NYC)

**ATTENTION SORORITIES, FRATERNITIES & OTHER GROUPS**—We will help you organize SPRING BREAK travel for your groups. Large groups can earn you FREE or discounted trips or \$ for your organization. Call Diana now for details at 1-800-925-8500 or 212-679-7699.

**PartTime Telemarketing**—Seeking aggressive people to work 9 to 1 or 4 to 8. Flex. Days-average \$8-\$12 per hour. Call 227-8802.

**DANCECB**  
WORLDCLASS D.J.s SPE SMART MIX FOR PEOPLE ON A THY AURAL DIET. HERE'S A S.E. . . .

**LIVE VENUE**  
WATCH FOR SPECIAL LIVE SHOWS. ACTS LOCAL TO INTL. THESE ARE SOME BANDS THAT HAVE PLAYED THE LOOP.

RED HOT OHILI PEPPERJURE • JAMES BEASTIE BOYS • PEARL • T99 • SOUP DRAGONS • BLACK SHEBLUR • EPMD • JANE'S ADDICTION • HAMEN • J&M CHAIN • VIOLENT FEMM.L • SONIC YOUTH • SMASHING PUMS • A TRIBE CALLED QUEST • LORDS/NOID • KC & THE SUNSHINE BAND • THE NGLERS • 25TH OF MAY • DEE-LITE • APOPHIS • SISTERS OF MERCY • MUDHONEY • PUBLIC IY • BARRY WHITE • RIDE • MY LIFE WITH THRILL KILL CULT • FRONT 242 • REM • U2 • CLASH • NEDS ATOMIC DUST B • STEREO M.C.s • ETC. . . .

FAITH NO MORE • NINE INCH NAILS • APB • THEY MIGHT BE GIANTS • SCHOOLY D • GANG OF FOUR • THE FEELIES • UNTAMED YOUTH • KILLING JOKE • JOHNNY THUNDERS • THE SMITHEREENS • HENIRY ROLLINS BAND • DUMP TRUCK • SILLY RABBIT • FLESH FOR LULU • THE SELVES • GIMMIE THE GUN • SQUARE 1 • BARRENCE WHITFIELD & THE SAVAGES • SWEET LIZARD ILLJET • RICHARD LLOYD • THE SILOS • KONK • CLOSE LOBSTERS • MIRACLE LEGION • THEY EAT THEIR OWN • SCRAM • DIG • YOUR MAMA • ANYTHING BOX • E.S.G. • LUCKY 7 • WINTER HOURS • Billy Goat • Dread Zep

**D.J. DANCE PARTY**  
**THURSDAYS**  
FREE ADM. .75¢ DRAFT

<b>WRECKIB BALL WS.</b> GIRLS ADMISSIOREE \$1.00 DRAFT - \$2.GOL	<b>DANCE OR HANG</b> WED. THRU SAT. SOUND CONDITIONED MUST BE 21 YRS.	<b>Fri &amp; Sat</b> <b>FREE ADMISSION</b> BEFORE 10:30 p.m. \$1.00 DRAFT until 11:00
--	--	--

**DIRECTIONS:** FROM CAMPUS OUT OF GATE 4 - GO RIGHT ONTO RATZER RD. - GO TO END & MAKE LEFT ONTO VALLEY RD. & GO TO END & E LEFT ONTO RIVERVIEW - TAKE RIVERVIEW TO 46 EAST - 46 EAST TO RT 3 EAST - PASSAIC AVENUE - RIGHT OFF RAMP - FOLLOW TO THIRD TRAFFIC LIGHT - MAKE LEFT ONTO VAN HOUTEN AVE. - F LIGHT MAKE RIGHT ON BROADWAY - LOOP IS ONE BLOCK ON RIGHT

**373 BROADWAY, PASSAIC PARK, N.J. 365-0807**

## Ski Half Price

*Tuesdays and Thursdays with Student ID*

\*50 Slopes & Trails  
\*3 Huge Interconnected Mtns.  
\*World's Largest Snowmaking System  
\*Authentic German Brewery  
\*Great Apre Ski Lounge  
\*All Night Ski Party February 27  
\*Group Rates Available

## Ski Now, Study Later

Rt. 94, Vernon, NJ (201)827-3900

# Beacon Sports

FEB. 1, 1993 • WILLIAM PATERSON COLLEGE

Pioneer bowlers keep rolling  
Swimmers top SUNY-Albany  
Lemieux faces tough battle

## Lady Pioneers edge Kean, 65-61

By Dave Calamito  
SPORTS CONTRIBUTOR

The Lady Pioneer basketball team gained a measure of respect in the NJAC last Wednesday, with a 65-62 hard-fought victory over the Lady Cougars of Kean College at the Rec Center.

WPC rallied from an 11 point deficit early in the second half, turning the game into a close contest with six ties and seven lead changes.

Leading 36-29 at halftime, the Lady Cougars were able to stretch their lead to 40-29 in

the second half. But the Lady Pioneers went on a 20-7 run, led by the gritty play of sophomore Maureen Marz, to take a 49-47 lead with 8:33 left in the game.

The teams then proceeded to go basket for basket. Kean grabbed a 62-61 lead with 1:43 left, and had the ball.

However, WPC senior co-captain Jill Bachonski came up with a critical block that helped give the Lady Pioneers possession of the ball. Kean committed a crucial foul on Marz, who calmly sank two free throws to give WPC a 63-62 lead.

Bachonski would later convert two free throws, 65-62. Kean had a chance to tie the game with a three-pointer, but was unable to get off a shot as the Lady Pioneers held on for the victory.

WPC improved its record to 10-6 overall and 7-4 in the NJAC. Marz scored a season-

high 15 points, while Bachonski added 14 points. Sophomore forward Keira Haines had 12 points and 12 rebounds.

Kean was led by Dawn Dickten with 17 points.

After the game, WPC's outstanding female athletes were honored. The presentation was sponsored by the athletic

department, the Women's Center, and the Movement Department. Those honored were:

Volleyball- Anna Tulic, Stacy Zwell

Ryan.  
Field Hockey- Tracy and Cindy  
Basketball- Jill

## Bachonski attains goal Scores 1,000th career point

By Brian Yaworski  
STAFF WRITER

Jill Bachonski, a senior forward from Carteret, New Jersey, has surpassed the monumental plateau of 1000 points for her career. In high school, Jill scored more than 900 points but did not really have the opportunity to break a thousand. She has seen three other players break the mark, and saw how big of a deal it was.

"I really wanted the chance to get it," Bachonski stated. "When I did, it seemed to take forever. I am glad it is over, now I don't have to worry about it."

Besides breaking the 1000 point mark, Bachonski had been named MVP for three different tournaments and Athlete of the Week by the Newark Star-Ledger.

This aggressive player for the Lady Pioneer's basketball

team is one of the most well-rounded competitors in the game. Not only can she score (seventh in the New Jersey Athletic Conference), but she can rebound, pass, and play astounding defense.

The most important aspect of her game is the spark she provides on the court. Whether it is a key basket, tough rebound, or an impossible pass, Bachonski is able to get the team going.

"All I care about is winning. If I don't score, I don't care, as long as the team wins," she added.

Bachonski started playing competitively while in the eighth grade. It was the first time she had the opportunity to play, and her team went undefeated. The enjoyment of the game is what started her playing, and has kept her going through her final year of college.

"I want to go on and have fun. The hard part is paying off this year's debt by to be playing."

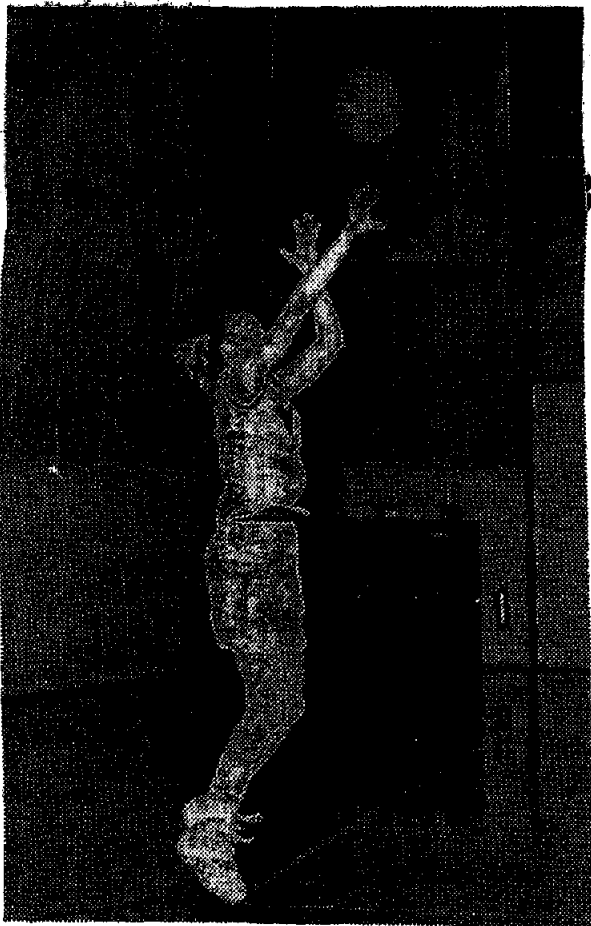
Bachonski could not go to any Division I school, and she was trying to decide between WPC and Paterson, and she went to a game in which two schools were facing each other.

"The girls from Paterson were underdressed, wore the same sneakers, and their shirts in, and they were of class. That game made me decide to go to WPC."

She feels the program also has a lot to offer. She believes that you can get more at a small school than the professors actually put your name.

"The professors are like family—that is what any student."

After college, Bachonski...  
SEE BACHONSKI PAGE 18



Lady Pioneer Jill Bachonski practices jumper

## PIONEER SPORTS WEEKLY PLANNER

### Men's Basketball

vs. Ramapo

Feb. 3 (A)

8:00 p.m.

vs. Rowan

Feb. 6 (H)\*

4:00 p.m.

\*broadcast on 88.7 WPSC FM

### Women's Basketball

vs. Ramapo

Feb. 3 (A)

6:00 p.m.

vs. Rowan

Feb. 6 (H)

2:00 p.m.

### Men's Swimming

vs. NY Maritime

Feb. 2 (H)

6:00 p.m.

### Women's Swimming

vs. SUNY-Albany

Feb. 2 (H)

6:00 p.m.

vs. Rowan

Feb. 3 (H)

4:00 p.m.

### Ice Hockey

vs. Kean

Feb. 7 (H)

9:30 p.m.

at Montclair State