

shining on the college community for more than 55 years

The Beacon

SEPT. 28, 1992 • WILLIAM PATERSON COLLEGE

COMMENTARY

Campus Vote '92

By John Rhodes
GUEST COLUMNIST

George Bush got more bad press last week (week of 9/21). Bush and Iran-Contra... Bush and his son's sleazy business deals... Bush and the hurricane victims... Does the news media hate George Bush--and love Bill Clinton? A lot of my students seem to think so. And there does seem to be some evidence to support this view: The Center for Media and Public Affairs says 65% of the non-partisan comments about Bush on network TV news shows during the month of August were negative... compared to 41% negative about Clinton. (What do you expect, conservative critics say, most journalists are liberals...)

But hold on. Four months ago, the situation was very different. Bush was leading in the polls and being talked about as the probable winner while Clinton was practically suffocating from negative news reports swirling around him--the Gennifer Flowers scandal, the draft issue, and there were negative stories about his public record too... his apparent waffling on the use of force during the Gulf War for one... his rather confusing stance on abortion, for another. Both print and broadcast media kept hammering away at him. I remember talking to a journalist friend in early July. When we got onto the subject of Presidential politics, she stated flatly there was "no way" Clinton could win the election. A lot of people felt that way. Obviously, things have changed since then. When Ross Perot dropped out of the race, Clinton moved

SEE MEDIA PAGE 3

Comm Club active again

By Eleonora Stampone
NEWS CONTRIBUTOR

WPC senior Ron Humer has re-established the Communications Club called S.E.T.T. (Students Exhibiting Their Talents).

He couldn't believe that only five to 10 people at a school of about 12,000 were taking advantage of the equipment.

"Last semester, I had an idea of getting a program together where students could help other students learn how to use the equipment and actually create their own material," Humer said. "I took it upon myself to start it."

The main goal of the Communications Club is "to take people with the desire to be creative and to want to learn how to use the equipment and show them properly how to do it," he said.

Humer actually taught himself how to use the equipment and then decided he was qualified enough to teach others.

"Most of the members are now freshmen," Humer said. "When I was a freshman, if there was a senior here that showed me around and got me interested I would've done it because, like them, I took TV in high school and was very interested in it. So I think it's great that I'm offering this to the freshmen. You can see that they are very happy also. The members are always there and they are very interested."

It was with the help of John Kiernan, the man in charge at the TV station, that Humer got access to all of the rooms and "actually started analyzing TV by himself." Because of his determination and willingness, he learned a lot by himself in a short period of time.

"It was really exciting when I taught someone how to use the equipment who was ten years older than me," Humer

said. "I took it upon myself to start this club to get people interested into it and create their



Ron Humer

own ideas, be it comedy, rap, rock or anything else."

Humer has acquired many connections through some faculty and staff at WPC.

Joe Martinelli, the athletic director, told Humer about a man from NBC, Tom Popol.

"I called him up every two weeks for six months and he (Popol) went out of his way to get me the opportunity to work in Barcelona this summer," he said. "It was the last job available."

In Barcelona, Spain, Humer worked 18-hour days for one month and met many people in the business.

"I felt like I was a part of them and they offered me jobs for the future," he said. "I'm now working for NFL and Update Saturday with NBC."

In Barcelona, Humer had many responsibilities, including being in charge of the other loggers, while the production assistants were helping the directors.

"I got good acceptance over in Barcelona and I worked with some great directors," he said. "The biggest project that I worked on over there was the MCI commercial. It aired every night at 8:00 during the

Olympics. It was incredible and the most excitement I ever had."



When Humer met the president and vice president of NBC at Barcelona, they offered him job opportunities for the future.

"They asked me to come down to Charlotte, North Carolina, which I will probably fulfill as soon as I graduate," Humer said.

Humer is also an active member of Kappa Delta Rho fraternity and played baseball for two years, but sacrificed playing to pursue his career with television.

"Right now the club is very active," he said. "A show that I initiated called 'Rapp It Up' should be airing soon. It is a

creative aspect similar to MTV where, by teaching people how to use the equipment, they go out and do projects themselves.

"Our grand success has been with a video we worked on before the end of the year," Humer said. "It was for a group called Non-Fiction, a semi-heavy rock group. It is big in Europe. The video is being played on MTV Europe."

They have also had a lot of outside projects over the summer, including one of the videos that has been on MTV and Video Jukebox.

Humer would like to keep working with television "more on the creative end, less on the fixed end."

"There are a lot of opportunities and directions with Communication, TV, film and radio," he said. "I don't want to limit myself to one thing."

Humer felt that especially since the Communication Department of WPC is growing in size and quality, that people interested would really take advantage of the facilities available to them.

"There is talent at this school, but it is very hidden," Humer said. "Somebody has to bring it out and I am trying my best to do that."

Wightman Gym closed for asbestos removal

By Andrew Scott
NEWS EDITOR

Following persistent inquiries by The Beacon staff, a sign reading "Danger: Asbestos" was posted at the main entrance of Wightman Gym over the weekend. The building has been closed off from classes for removal of cancer-causing asbestos. Room changes for classes were also posted at the

entrance.

Wightman Gym was one of two buildings on campus that remained occupied during asbestos removal, according to a WPC maintenance employee. The other building is Hobart Manor.

The employee, who declined to be identified, said Wightman Gym and Hobart

SEE WORKERS, PAGE 3

CAMPUS EVENTS

Monday

WPC Christian Fellowship—Attention all nursing majors-join us as we study the world's "best-seller" in one of our small groups. All are welcome. 3:15 p.m. in Wing 120. For more info call Ken at 423-2737.

WPC Christian Fellowship—Join us for a time of prayer and encouragement. All are welcome at 12:30 p.m. in SC 302.

WPC Christian Fellowship—Small group for fun, friendship and Bible study at 11:00 in the Towers F-32.

Lady Pioneer Basketball Team—First meeting at 3:30 p.m. in Matelson Hall Room 16. If you can't make the meeting, stop by the athletic office any time before.

WPC Christian Fellowship—In Heritage 302, small group for fun, friendship and Bible Study at 8 p.m.

Elementary Education Club—General meeting with speakers in Raubinger 313 at 3:30 p.m. For more info call Sue Toth at 473-4038.

Towers Life Committee—8 p.m. in South Tower E-125. First general meeting of the year. All welcome. For more info call Towers Pavilion Office at 595-2381.

Catholic Campus Ministry Club—Preakness Nursing Home visits begin on Monday. If you are interested in joining us meet at the CCMCenter at 6:30 p.m. For more info call Angela at 595-6184.

Catholic Campus Ministry Club—12:30 a.m. in SC Room 325. Students and faculty gather for Mass. Come join us!

Sorority Committee—SC Ballroom at 7:30 p.m. Get involved, come check out sorority rush from Sept. 28-Oct. 1. For more info contact Student Development.

Tuesday

Sorority Committee—Meeting at 4:00 p.m. For more info call Samantha Brunet-sorority chair.

College Republicans—PAL Lounge at 5:30 p.m. If you're a republican, come out and support your party by joining the College Republicans!! Do your part and 4 more years can be a reality!! For more info call Kevin at 904-1034.

Essence—Third meeting of semester in Matelson 368. New members are welcome. For more info call Yvonne at 790-4978.

WPC Christian Fellowship—9:30 and 11 a.m. in SC 302. Small group for fun, friendship and Bible study.

WPC Coalition of Lesbians, Gays and Friends—7 p.m. in Science 369. Rap group. Refreshments will be served. All are welcomed. For more info call 595-3427.

Business Students Association—3:30 p.m. X106. All business students are invited to join us, every tuesday to share your ideas with us. Also a public relations is needed. If you can handle the job, let us know! For more info call Melynda at 942-4814.

Coalition of Lesbians, Gays and Friends—Rap group and refreshments served on Tuesdays at 7 p.m. and Thursdays at 1:30 p.m. in Science 369. For more info call 595-3427.

International Students Association—3:30 p.m. in Matelson Hall. Second meeting of the semester.

For more info call Barbara D. Milone at 595-2491 or Taimour Hussain at 908-220-9528.

Wednesday

Semester Abroad Program—1:30-3:00 in SC 332 and Tuesday Oct. 6th from 3:30-5 in SC 349. Semester Abroad information session open to anyone interested. Former participants will be there. Application deadline for the spring semester in Oct. 15th. For more info contact Prof. Satra in Matelson 317.

Thursday

Career Services—11-12:00 p.m. in SC 326. Planning for Graduate School. For more info call Fran Greenbaum at ext. 3020.

People for Peace—Peace, Peace, Peace, Helping Homeless, Peace, Peace, Amnesty International, Peace, Peace—at 1:00 and 3:00 p.m. in SC Room 304. Come see what our club is like! For more info call 595-2022.

WPC Christian Fellowship—9:30, 11:00 and 12:30 p.m. in SC 302. Come investigate the world's "best-seller" in one of our small groups. All are welcome. For more info call Ken at 423-2737.

Catholic Campus Ministry Club—12:30 in SC Room 203. All faculty, staff and students are invited to join us at a Memorial Service for Chuck Jury.

ACADEMIC ACTION

The answers to the questions appearing in this column are supplied by the staff of the WPC Advisement Center, located in Wayne Hall, Room 138. Any student with an academic question is invited to stop by and use the Center's resources. Any comments on the Academic Action column are also welcome. Operating hours: Mon through Thur: 9:00 am-7:00 pm; Fri 9:00 am-5:00 pm.

1. I am a new transfer student and have not received an evaluation of my transfer credits. How do I obtain this?

Evaluations for transfer students who registered in August of 1991 will be mailed in October. Updated evaluations for transfer students who registered prior to August will also be mailed in October. If you are a new transfer student, and do not receive your evaluation by the end of October, contact the Advisement Center.

2. How can I find out who my advisor is?

Prior to the next registration period, students will receive a mailgram from the Registrar's Office. This will include information about the registration process, as well as cite the advisor assigned to the student.

3. How can I obtain a minor?

A minor consist of 18 credits in a specific area. Students do not have to apply for it. However, students should consult the chairperson of the department for advisement and information. A complete list of minors offered at WPC is available in the advisement center. Information on minors is also printed in the college catalog.

4. How can I determine my class standing?

Class standing is determined by computing the total credit hours a student has earned. The standings are as follows: Freshman=23 credits; Sophomore=24-57 credits; Junior=58-89 credits; Senior=90 credits and up.

5. How do I apply for an official Leave of Absence?

If a student finds it necessary to leave WPC for one or two semesters, and is in good academic standing, continuing students may apply through the Counseling Center which is located in Matelson Hall, Room 109. Freshman students may apply through the Office of the Dean of Students; located in Matelson hall, Room 161.

\$ Money Available \$ Quick & Easy Form

Scholarships, Grants, and much more.
Income & Grades not a Factor in Eligibility

Did You Know?

\$6.6 Billion of Financial Aid from the private sector funding has gone unclaimed each year

Our sources are Guaranteed
Sources Now Accepting Applications
Apply before Next Semester

Write, Phone or Fax for Free Information
Computer Communication Services, inc.

249 Washington Ave. Elmwood Pk. N.J., 07407

Office (201) 797 - 0302
Fax (201) 794 - 7690
Telenotification (201) 791 - 2949
ext. 112

Member of
Better Business Bureau
Chamber of Commerce

HALEDON GRILL

472 Haledon Ave, Haledon
1/4 mile down Pompton Rd. 1 block from Dunkin Donuts.



942 - 5151

DELIVERY

Lunch and Dinner till 9pm

Choice of Hot Dog or burger
with Fries & Soda \$2.99

Choice of Philly steak, Roast Beef or
Chicken Filet

with Fries & Soda \$4.49

Breakfast --> Bacon or Taylor Egg \$1.59

Workers to remove asbestos from Manor

FROM GYM, PAGE 1

Manor should not be occupied while the asbestos is being removed.

The college hired outside contractors to remove the asbestos, which was exposed because of the construction and renovation of the buildings, as required by the college's Master Plan to expand campus facilities.

Assistant Director of Facilities William Siegrist said the college obtained a certificate of occupancy allowing classes to be held in Wightman Gym during asbestos removal. Siegrist said the areas from which asbestos will be removed had been sealed off to prevent faculty and students from being contaminated. Those areas include the locker rooms and mechanical room.

The maintenance employee said he felt the certificate of occupancy should have been obtained after and not during asbestos removal from the building.

The employee described two types of asbestos, both of which are used for insulation and can be found on pipes and

in walls. One type is nonflyable, which is painted or sealed to prevent particles from floating through the air and breathed into the lungs.

The other type is flyable, which is not sealed and is thus a potential hazard, the employee said. If there is a disturbance, such as a draft or someone banging on a pipe, the particles from the unsealed asbestos will be knocked loose and float or be blown through the air. Once a person breathes asbestos into his/her lungs, that person can develop cancer after 10 or 15 years.

The employee said the locker rooms in the gym, which contain the asbestos, were not sealed off. Students could still get into and out of the locker rooms. Some of the asbestos in the locker rooms is flyable.

Siegrist said a certificate of occupancy has not been obtained for Hobart Manor because workers have not yet begun removing asbestos from the building. That work is scheduled to begin today, he said. John Piccirilli, assistant engineer in charge of Facilities, deemed the building safe to oc-

cupy during asbestos removal.

Once the work is started, the employees in the administrative offices must move to another floor to work, the employee said. However, even if the employees move to another floor, they would still be in the same building and run the potential risk of being exposed to as-

bestos through air ventilators, he said.

One area in Hobart Manor that contains flyable asbestos is called the blue carpet room, the employee said. Although workers have not begun removing the asbestos and the office employees have not moved to another floor, the workers have

removed filing cabinets and other objects from the blue carpet room to get to the asbestos, he said. The workers have put the cabinets, some of which have asbestos dust on them, in the hall next to the offices where the administrative employees presently work, the employee said.

Prof discusses media coverage of candidates for presidency

FROM CAMPUS PAGE 1

up in the polls. The Democratic Convention gave him another boost. Now Clinton looks strong...Bush weak.

So what does it all mean? My own feeling is that the media doesn't especially like either of these guys. News men and women tend to be cynical...mistrusting of all politicians. But I also believe that journalists as a group (especially simple-minded TV journalists) are attracted to a winner and the image of a winner. That's why you often see a subtle media "bias" in favor of whoever happens to be leading

in the polls. And I think that's what we've been seeing in this presidential campaign. If a candidate is trailing by ten percentage points or so when his campaign bus breaks down...some news reports may imply that this is just one more indication that the guy is a hapless loser. But if the same bus breakdown occurs when he's ahead in the polls, there may be a tendency for the media to focus on the candidate's ability to weather the adversity, and move forward as planned.

And it's not over yet...Ross

Perot is said to be thinking about re-entering the campaign. Some analysts believe that would hurt Clinton more than Bush. And if Bush regains his lead in the polls, we may see a "kinder, gentler" news media attitude toward the President. Stay tuned...

John Rhodes is a Communication professor at WPC, specializing in broadcast journalism. He worked as a producer for CNN for six years and currently works for the cable news giant on a part-time basis.

Negro Ensemble co-founder visits, lectures at college

By Kenneth Wright
NEWS CONTRIBUTOR

Douglas Turner Ward, who co-founded the Negro Ensemble Company to produce works written, directed, and performed by blacks, is WPC's visiting distinguished scholar in the African Studies Department for 1992-93.

Ward, who wrote the play *A Soldier's Play* that became the movie *A Soldier's Story*, is teaching two courses: Dialogues on Culture and African American Theater. In addition, he will present a series of lectures and conduct acting and writing workshops.

"Ward is also expected to prepare a major production for the college community with the possible collaboration of the Theater Department," said Ronald Parris, chairperson of the African Studies Department. "His presence is bound to enhance the visibility of our program."

Ward said he would also

like to interact with the college's jazz program and other departments such as history.

"I hope to expose students to in depth discussions of cultural subjects," he said. "I want students to be able to realize the importance of American theater during the last 25 years. I also want them to have not only a personal perspective, but a scholarly understanding of African American theater."

Ward, who grew up in New Orleans, earned two doctorate degrees, one from City University of New York and one from Columbia College in Chicago. A playwright, actor, producer, and director, he appeared with actress Oprah Winfrey in the TV miniseries, "Women of Brewster Place."

Ward, whose office is in Matelson Hall, teaches class on Wednesdays and Fridays at 11 a.m. in Matelson Hall and on those same days at 2 p.m. in Hunziker 201.

So, You Want To Vote

But Don't Know What To Do...

Step 1: Register

You must be a U.S. citizen and 18 years of age by November 3 to register to vote.

You may have to register again if you have not voted for four years or if you have moved since the last time you registered to vote. Deadline for registration is October 5.

Step 2: Absentee Ballot Applications

If you want to vote but can't make it to your election booth because you live out of your home county, work or have classes all day, you can fill out a simple absentee ballot application. When you receive your absentee ballot in the mail, this will allow you to cast your vote. Deadline for application is October 27.

Where Can You Get Them?

You can get registration forms and absentee ballot applications at:

Towers Pavilion Office
Apartments Pioneer Office
SGA SC 330
Student Center Lobby

Tables: Tuesday & Thursday 12:30 p.m. to 3:00 p.m.

Step 3: VOTE!!!

NOTICE

The Board of Trustees will be meeting for open session in the Student Center Ballroom on Tuesday, Sept. 29 at 8 p.m.

**YOU ARE INVITED TO PARTICIPATE IN THE
14TH ANNUAL
THANKSGIVING AWARENESS PROGRAM**

co-sponsored by the

WILLIAM PATERSON COLLEGE

**CATHOLIC CAMPUS MINISTRY, SGA, GREEK SENATE,
INTERFAITH COUNCIL, STUDENTS, FACULTY & STAFF**

on behalf of the people served by the

PASSAIC COUNTY EMERGENCY FOOD COALITION

To all members of the WPC community,

You are invited once again to participate in the 14th ANNUAL THANKSGIVING AWARENESS PROGRAM, on behalf of the people served by the Passaic County Emergency Food Coalition. You may request a collection can by calling the Catholic Campus Ministry Center 595-6184.

DATES RELATED TO

THE THANKSGIVING AWARENESS PROGRAM:

Oct. 1 OPENING OF THE "TAP," cans become available to all

Nov. 9 Cans are due back at the SGA (Student Center 330) or Catholic Campus Ministry Center

Nov. 20 (Friday) Food pick-up day from the Community Food Bank, Newark (Volunteers needed, call 595-6184 to assist)

Nov. 20 THANKSGIVING AWARENESS MASS, 7:30 p.m. SC BALLROOM

Nov. 23 Ecumenical Thanksgiving Celebration SC Ballroom, 12:30 p.m.

VOLUNTEERS ARE NEEDED TO HELP COLECT CANS, CARRY CANS, COUNT MONEY, PICK UP FOOD. Please indicate below how you can assist.

cut here. save & post the top, return this section to CCMC c/o SGA, Student Center 330

Name _____

Phone _____

I (we) request _____ THANKSGIVING AWARENESS CANS. I am responsible for them and will collect them to be returned to the SGA office or the CCM Center Nov. 9, 1992.

Organization (Club, Sorority, Fraternity, Office) _____

I can VOLUNTEER my Time & Energy for the following:

_____ Carry Cans (Week of Nov. 9)

_____ Carry Food

_____ Count Money (Week of Nov. 20)

CALL 595-6184 FOR INFO.

Brothers For Awareness promotes unity, culture

By Kenneth Wright
NEWS CONTRIBUTOR

Brothers For Awareness (BFA) is a club aimed at promoting unity and African culture among black male students, said BFA President Kim Freeman.

BFA plans to establish scholarships to help recruit, retain, and graduate more black male students, Freeman said. The club promotes members' participation in extracurricular

activities, such as community service and on-campus events.

During the summer, the SGA approved BFA as a Club B, Freeman said. A Club B organization holds a specific interest and is entitled to approach the Finance Committee with requests for funds from the club's account.

The first event planned by BFA is the Gathering of Black Men on Oct. 8 in the Student Center, said Davarn Wright,

chair of BFA's Special Events Committee. The event will provide a chance for black students to meet with WPC's black male faculty and administrators.

Two other events planned are the Oct. 15 BFA Life Celebration and the Nov. 20 bus trip to see *Malcolm X*, the movie directed by Spike Lee, said Wright. The last event planned for fall is Kwanzaa, in December, which is an African cele-

bration involving gift-giving. The event will include a manhood ritual, Freeman said.

One community service activity planned by BFA is teach-

ing and mentoring students in Paterson schools. Freeman stressed the need for black males to serve as positive role models to younger people in the black community.

Student, faculty seek to reform organization

By Justin J. Cordes
NEWS CONTRIBUTOR

Foreign students in conjunction with faculty are looking to reform the International Students Association.

Taimour Hussain, a first-semester student from Pakistan, hopes to breathe life into this club, giving foreign students a chance to build a support network with each other. Hussain has help from Barbara Milne, director of Student Programs.

"For a new student from another country, it's a totally new world," Hussain said.

Hussain, who aspires to create a sense of community among different countries, feels

the participation of American students is important for the club's success.

Originally started in 1971, the club was a strong force on the campus and received the Active Club Award in the 1989-'90 school year. It was deactivated shortly after the spring semester of 1990, being that most of the key people graduated, leaving a weaker member base to carry on its affairs.

"There are 90 international students on this campus," Milne said. "Some are already used to the ways of American life and don't need this kind of support. There are also other clubs such as the Chinese club and OLAS that would serve this purpose, but there is still the need for an organization that will provide support for our newly arrived international students."

Hussain believes the International Students Association could be an effective group to foster support for other countries.

"Most of the political decisions are made in the United States," Hussain said. "The International Students Association can represent countries here on campus to promote change."

Organizational meetings will be held each Tuesday until Oct. 20 at 3:30 p.m. in Matelson Hall room 121. For more information, please call Milne at 595-2491.

GRAND OPENING SALE!

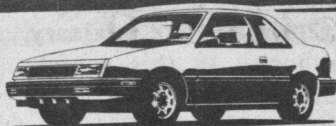
CHRYSLER/PLYMOUTH

NOW AT **Borough**

AS LOW AS **4.9%** FINANCING APR OR UP TO

\$1500 REBATES SELECT NEW MODELS IF QUALIFIED

ADDITIONAL \$500 COLLEGE REBATES SEE US FOR DETAILS



NEW 1993
SUNDANCE

PLYMOUTH — 3 dr hatchback. Equip incl: 4 cyl eng, 5 spd man trans, pwr/steer/brks, air cond, driver's air bag, rr def, am/fm stereo, tint gls, gauges, trip odom, bdy side mldg, cloth int, bucket seats, B/W all season tires. Stk#2700. VIN#PW504984. MSRP \$10,239. \$213.86 refundable security required. Total of lease payments \$8831.60. Purchase option at lease end = \$2941.

PRICE INCLUDES \$500 FACTORY REBATE

BUY FOR **\$8995**
\$113⁸⁶ PER MO.
LEASE FOR



NEW 1992
VOYAGER LE

PLYMOUTH — Van. Equip incl: 6 cyl eng, auto trans, pwr/steer/brks/winds/lks, air cond, rr def, cass, tint gls, tilt, cruise, roof rack, full spare. Stk#2662. VIN#NR783168. MSRP \$21,542. \$393.08 refundable security required. Total of lease payments \$19,584.80. Purchase option at lease end = \$6032.

PRICE INCLUDES \$500 FACTORY REBATE IF QUALIFIED

BUY FOR **\$18,995**
\$293⁰⁸ PER MO.
LEASE FOR



NEW 1993
CHEROKEE SPORT

JEOP — 4 dr. Equip incl: 6 cyl eng, auto trans, pwr/steer/brks/winds/lks, air cond, rr def, cass, sun screen tint gls, gauges, roof rack. Stk#2684. VIN#PL506635. MSRP \$20,481. \$339.81 refundable security required. Total of lease payment \$16,388.60. Purchase option at lease end = \$6639.

PRICE INCLUDES \$500 FACTORY REBATE

BUY FOR **\$17,695**
\$239⁸¹ PER MO.
LEASE FOR



NEW 1992
WRANGLER

JEOP — 2 dr. Equip incl: 6 cyl eng, 5 spd man trans, pwr/steer/brks, no air, gauges, am/fm stereo cass, gauges, trip odom, tach, bucket sts, all season radials, side steps, hard top, rr wiper/washer. Stk#2409. VIN#NJ538599. MSRP \$15,688. \$298.99 refundable security required. Total of lease payments \$13,939.40. Purchase option at lease end = \$4550.

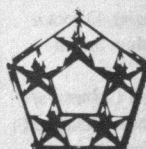
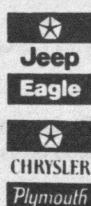
PRICE INCLUDES \$500 FACTORY REBATE

BUY FOR **\$13,895**
\$198⁹⁹ PER MO.
LEASE FOR

Above lease payments based on 60 month closed end lease with \$2,000 cap cost reduction. 13,800 mile limit per year, then 12 cents per mile thereafter. All ad vehicles sold cosmetically as is. Insurance and maintenance not included. For qualified buyers. Customer may be responsible for unusual wear and tear at lease end. Prices include all costs to be paid by a consumer, except for licensing, registration and taxes.

Borough

595-7666



89-92 FIVE STAR
SERVICE QUALITY AWARD

168 HAMBURG TURNPIKE, WAYNE, N.J. 07470

Join Bergen Rugby Football!

Practices
Tues. & Thurs.
6-8pm.

Call for Info.
(201) 483 - 5679

Seeking college
athletes of all
caliber!

MOBILE ENHANCEMENTS

Custom Installations
Sales • Service

Alarms
Stereo System
Cellular Phones
Remote Car Starters



(201) 945 - 5250
10% discount
for students

Unplanned Pregnancy?



FREE

Confidential Help and
Pregnancy Test at

BIRTHRIGHT

456 Belmont Avenue
Haledon
956-8215

19 W. Pleasant Avenue
Maywood
(minutes from Bergen Mall)
845-4646

EDITORIAL

WPC's illusions and delusions

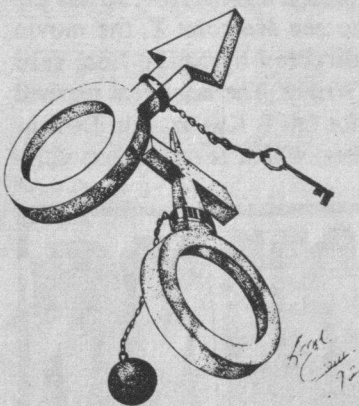
Before we dive into this discussion, let's get some definitions straight.

Women's Center—a safe place that's designed to deal with the specific and personal adversities that face women: date and acquaintance rape, stranger-rape, homophobia, racism and sexual harassment. A place for women (and interested men) to join together to share experiences and assist each other.

Women's Center coordinator—a woman whose background would enable her to effectively deal with the management of a women's center. She should be familiar with the campus environment, involved with the Women's Studies Program and be recognizable to students.

Simple enough to understand, don't you think? Not quite.

You see, if there's one thing you learn at WPC, it's that nothing is what it seems. The latest trick pulled out of the administration's top hat of surprises is the recent appointment of a Women's Center coordinator. Ignoring the first two choices of a search committee, the dean of students, acting upon the committee chair's personal recommenda-



tion, picked the committee's third choice; a woman who has not been in a college atmosphere for more than ten years. They overlooked the committee's first choice; an outspoken, popular supporter of women's issues and a professor in the Women's Studies Program.

Surprised? Don't be, because it has practically become college policy to ignore the suggestions of people who will eventually be affected by the ad-

ministration's questionable appointments. This most recent outrage, however, adds an overtly-sexist, power-mongering twist to the college's legacy of ineptitude.

There are several questions one must ask in assessing the current situation. Some specifically geared to the appointment of Women's Center coordinator, others addressing the question of sexism and power on a broader scale. What are committees worth if their recommendations are ignored? Why are committees subject to a single administrator's approval? What type of *Women's Center* will this college have when its coordinator must answer to a *male* dean of students, *male* vice-presidents, *male* president and a board of trustees whose state-appointed membership is overwhelmingly *male*?

So while WPC is busy erecting another facade, be careful of what's real and what's illusion. Perhaps we should offer a major in sorcery. We'll call it "Illusions Studies" and we'll get a vice-president or even the president to be the chairperson. Just a student's suggestion—I'm sure they'll appoint someone else.

LETTERS

Prof blasts college on coordinator choice

Editor, The Beacon:

Consider this a lesson for the general education requirement, "Racism and Sexism." As director of Women's Studies, as one who teaches about racism and sexism, and finally, as a member of the search committee for the coordinator of the Women's Center, I would like to explain my anger over the search process. To do so, it is necessary to put aside a number of issues raised by the search (questions about the composition of the committee, rumors about inside tracts, etc.) and focus on the real issue, the fundamental flaw of the search. The search process for the coordinator of the Women's Center was flawed from the beginning because women did not have any genuine decision making power during any stage of the process. The committee was chaired by a white male (associate dean of students), a white male was empowered to select the final candidate (dean of students), and two white males were in the position to affirm his selection (vice-president for Student Services and the president).

Now, students who have studied racism and

sexism know that the previous statement is not a sweeping indictment of white males. They know that the identification of the race and sex of decision-makers is appropriate in specific contexts. For example, recall the agony of Professor Anita Hill, attempting to explain to individuals totally unlike herself, individuals separated from her by race, sex, and class, her experience of sexual harassment. The (all white, all male) Senate Judiciary Committee found Hill not to be credible because what happened to her could not happen to them. This is the basic problem with the women's center search. Decisions were made by individuals who, on the basis of their sex, race, and class, will never personally know the pain of being second-class, of being invisible and silenced.

Women need a center, a safe space, due precisely to our suffering at the hands of specific men and a culture which denigrates us. A Women's Center deals with the specific and personal consequences of sexism, racism and heterosexism: date and acquaintance rape, stranger-rape, sexual harassment, homophobia, racism, etc. A Women's Center is a place for women, alone, as well as with interested men, to come together; to share and to help each other to cope and perhaps, to overcome and thrive. A Women's Center also celebrates the rich diversity among women and women's culture. Women faculty and staff who work with these issues every day, in classes and in their own lives,

should have had the primary, not advisory, decision-making authority in this search. Apparently, the administration, like the Senate Judiciary Committee, just doesn't get it.

It is ironic and outrageous that WPC, well known for its early and strong commitment to a race and gender curriculum and to projects which address the inequalities of sexism and racism "doesn't get it." For ten years, Dr. Speert, among others, has praised the general education requirement in racism and sexism and the work of the Women's Studies and Race and Gender faculty. Yet, in the search for the coordinator of the Women's Center, the administration purposefully ignored and denied the

lessons of this project. Don't they know that the theory has no meaning without practical application? Why are the faculty encouraged to teach one thing while the opposite is practiced by the administration? How can women be empowered through a women's center if they are not even empowered to select it's director? In fact, the Women's Center should not be a joint project of the Office of Minority Education and the Women's Studies Program.

The president, the vice-president of student services, and the dean of students, all white and male, have chosen to hide behind the "procedures" of the search process (that were created by them

SEE DECISION PAGE 11

The Beacon
Founded in 1936

Domenick Stampone
Editor-in-Chief

News Editor
Andrew Scott

Copy Editor
Joe Brennan

Insider Editor
Sheli Rosa

Asst. Insider Editor
Dawn Marecki

Sports Editors
Michael Braun
Joe Ragozzino

Business Manager
Brian Myers

Advertising Manager
Shaya Ansari

Illustrator
Tom Crews

Staff Writers
Randee Bayer Spittel
Donna Mitchell
Michael Koenen
Pamela Johnson
W. Scott Sherman

Staff Photographers
Joshua Smith
Mike Fantau

Design Director
Joshua Smith

Staff Columnists
Albert Stampone
Brian Myers

Circulation Manager
Ari Saperstein

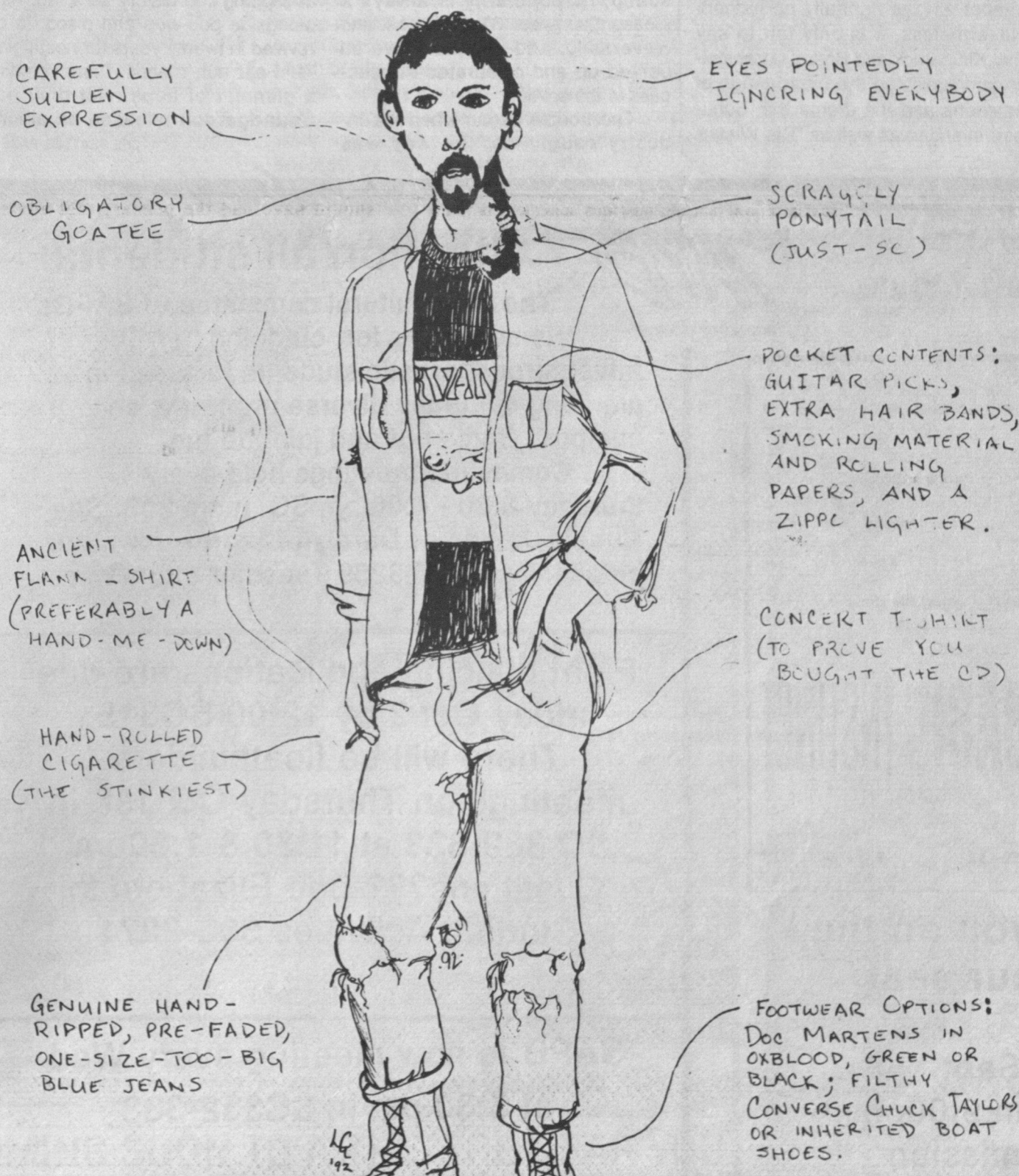
Adviser
Tina Leshner

Business Adviser
Rich McGuire

The Beacon of William Paterson College is published by the students of William Paterson College of Wayne, New Jersey 07470, with editorial, production and business offices in room 310 of the Student Center. Newspaper content represents the judgment of The Beacon staff in accordance with The Beacon constitution and does not necessarily represent the judgment of the Student Government Association, the administration, faculty or the State of New Jersey. Opinions in signed columns and letters to the editor are not necessarily the opinion of the staff. This paper is independently funded. Editors can be reached by calling 201-595-2248 or 201-595-3264.

SEATTLE STYLE

(New Jersey Version)



Seattle grunge style: fad or future?

By Shell Rosa
INSIDER EDITOR

Dawn M. Marecki
INSIDER EDITORIAL ASSISTANT

I was reading through the ads in the back of the EC Rocker, and the standard for musician ads has become to list the Seattle bands as influences. Fair enough, because the Seattle scene has always been one to reckon with.

Recently, though, the additional trend has been to qualify those statements with a time frame: "Yeah, but I've been listening to Soundgarden for four years, so I'm not just saying that."

Admit it, you love it. It's really okay.

Unfortunately, there's this prevailing misconception that Nirvana put Seattle on the map, and that everyone else has followed in their grungy Doc Marten footsteps.

Not.

The deal is, it was the mainstream popularity of Nirvana that led to the Seattle sound becoming an embarrassing joke. The trend is so insidious that the record companies can't crank out the carbon copies quick enough.

Witness: Willard. Roadracer (before they merged with Roadrunner/Third Mind) released their album *Steel Mill* over the summer, and I am sad to say this is what the Seattle Sound has come to. Willard is a deadpan Xerox of Soundgarden, circa 1989. It's a good sound, but sorry to bust any

SEE SEATTLE, PAGE 8

Profs give strong Midday performance

By Pamela Johnson
STAFF WRITER

Gary Kirkpatrick and Stephen Bryant proved to be a dynamic pair at the Midday Artists' series this Thursday Sept. 24. The performance was not without flaws, but was an exhibition of skill and fine musicianship. Unfortunately, Bryant was ill with a cold but afforded an excellent performance.

Schubert's "Die Winterreise" (The Winter Journey) is a cycle of songs which contains a variety of movements from dark and dramatic lamentations of sorrow to spirited, ornate love songs.

It became quite clear that Bryant's favorite pieces are those which are powerful and dark. He performed them with the proper degree of aggressiveness without looking like he was trying to be macho. Bryant also executed the lighter, more intricate moments of the piece with skill and sensitivity which lended contrast to the performance.

On the other hand, his stance and physical delivery appeared somewhat uptight. He's so stern! Then again, that might be just because he

was concentrating so deeply. Perhaps one nice yummy cocktail would have done the trick to make him look a little happier to be there. However, I'm not so sure I'd be happy to be there if I had to sing a recital with a cold.

Kirkpatrick supplied another excellent performance this week to follow up the great music he provided last week. Once again Kirkpatrick seemed comfortable, serious, and involved with his art. Bryant and Kirkpatrick by all means work well together. It was obvious that they were in tune with each other's musical sensitivities.

I don't like giving "this was good, that was bad" reviews (even though that is what I have been doing so far). However, it is safe to say that people don't go to concerts to see proper technical execution. People go to concerts to be affected by music in a way that is subjective and cannot always rightfully be judged. Nevertheless, it is only fair to say that Kirkpatrick and Bryant successfully communicated the broad range of emotions and the drama that Schubert intended as well as "Die Winter-

reise's" technical challenges.

On the whole, I think the audience was moved by this performance (even though there are al-

most always a few sleepyheads at these things). Kirkpatrick and Bryant gave us music and we were glad to accept their gift.

Seattle trend continues...

FROM COVER

bubbles, it's been done before.

Maybe it's like the prejudice of old goth fans, who were offended when **The Cure** went mainstream: those of us who have been attuned to Seattle since **Queensryche** first went national in '85 and **Nirvana** was only known in the darkest underground clubs are a little taken aback by the sudden appearance of **Pearl Jam** wannabes everywhere.

It's not necessarily that any of these bands (the original Seattle grunge pioneers **Mother Love Bone**, **Soundgarden**, **Alice In Chains**, **Pearl Jam**) set out to become pop icons. In the early stages of a new sound, its popularity is always a pleasant surprise. When *Ten* hit, and *Nevermind*, and *Temple...*, we all perked up and celebrated the success of the scene.

The trouble began when the industry caught on: the way was

opened for poseurs like **Willard** to cash in on the success of their neighbors.

It's everywhere: the floppy flannel look, the appearance of Doc Martens in Kinney stores, and even the release of the movie *Singles* (even if Matt Dillon does look good in that long auburn wig)—it all points to an exploited scene.

Why else would it suddenly require a qualifying time frame before one admits to being influenced by the Seattle scene?

Because nobody wants to be trashed (like **Willard** right now) for being completely unoriginal. It's enough to make me afraid that the whole sound and style are in danger of slipping into history as a fad, right alongside doo-wop and disco, to be revived in twenty years for nostalgia.

Fear not, friends, there remains a glimmer of hope. Not only has **Soundgarden** released an album,

SEE SEATTLE, PAGE 9

DON'T MISS SAPB'S FIRST TUESDAY NIGHT MOVIE

SAPB
STUDENT ACTIVITIES PROGRAMMING BOARD

Attention all students:

The multicultural committee of SAPB is searching for: outgoing,

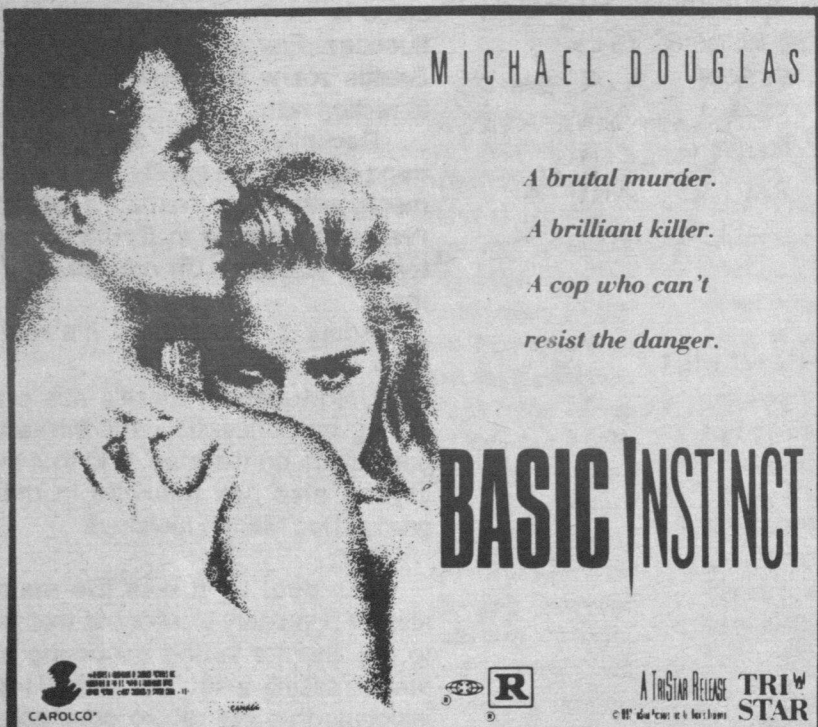
adventurous, artistic students to assist in planning culturally diverse programs on campus. Come out and join the fun.

Committee meetings held every thursday 3:30 - 4:00 pm SC room 303. See Nubeja Jordan or Daralyn Corprew for more details. Call 595-3259 Tuesday 11am-1pm.

Float building applications are due friday Oct 2 by 12:00 SC315.

There will be floatbuilders meetings on Thursday Oct 1st in SC 332-333 at 11:30 & 1:30pm. Questions??? See Elizabeth in Student Activities 595-2271

SAPB is now meeting every Wed at 5:30 pm in SC332-333



It will keep you on the
edge of your seat.

Tuesday, Sept. 29
SC Ballroom 9:00pm
\$1.00 Admission

Jersey band breaks commercial mold

By Mike Garry
INSIDER CONTRIBUTOR

It's hard to be impartial about a band that you saw come up in the clubs, get better and better and finally achieve the ever-coveted major label status. With that in mind I'll try not to gush too much about these hometown heroes who made good.

The band is in itself an oddity. **Mr. Reality** is an acoustic trio who were born and grew out of Central Jersey's rigid commercial metal community favoring angelic vocal harmonies and songwriting in the folk/pop tradition.

Having done time in local bands such as **Gallery**, **Faith Healer** and **Colossal Street Jam**, guitarist Gordon Brown, vocalist Pete Scherer and bassist Rob Tanico left the wailing distortion of Hard Rock for the simple clarity of acoustic music.

After a year of constant gigs they were signed to SBK (**Vanilla Ice**, **Wilson Phillips**, **Jesus Jones**) and hooked up with rock luminary/producer, Danny Kortchmar.

Mr. Reality's self-titled debut is an impeccable blend of light-hearted love songs, dark, foreboding imagery and a collection of inquiries about family, liberty and reality. It's a slice of American pie brimming with honesty.

The album leads off with "Anonymous," a track with early Springsteen imagery combined with a case of unrequited love. But these guys seem to have more to do with genuine insight than the standard "cars and girls" references. "If I Close My Eyes" addresses the unkept promises from the great lady in the Harbor while maintaining hope in our surroundings. "In My Yard" is a semi-sentimental look at growing up and growing older that juxtaposes idealistic childhoods with splintering families and the inevitable survival of both.

The dark side is touched upon with the desperate struggle of "My Guns" and the starkly realistic "Fourth of July," which takes a glimpse into street life in the big city. The most unsettling track of the collection is "Mr. Reality" which illustrates inner turmoil and confusion with a manic opening riff and a cascading chorus.

Among the album's highest points is "Honest Innuendos," a sobering portrait of misdirected hopes and looking for love in all the wrong places, and the hopelessly optimistic ode to perseverance, "So Much of Everything."

Mr. Reality's sound is simple yet rich, relying heavily on Brown's guitar work and the three part harmonies created by the entire band. Stan

Lynch of Tom Petty's Heartbreakers lends a hand and adds some very tasteful and unique percussion. Electric guitar is used sparingly, adding only accents and furthering the emotional effect of the songs.

I don't see how this band can remain a secret for much longer.

They've got so much to offer those who stop to listen. It is very difficult to dislike these songs, with their expansive appeal and irresistible harmonies. It sounds like **Mr. Reality** is knocking on the world's door, and I think they're coming to stay for a while.

Grunge is spreading...

FROM PAGE 8

not only has the **Temple of the Dog** album been re-released, but there are new bands surfacing who have managed to add something new to the sound. New transmutations of what we refer to as "grunge" will surely help keep the scene thriving.

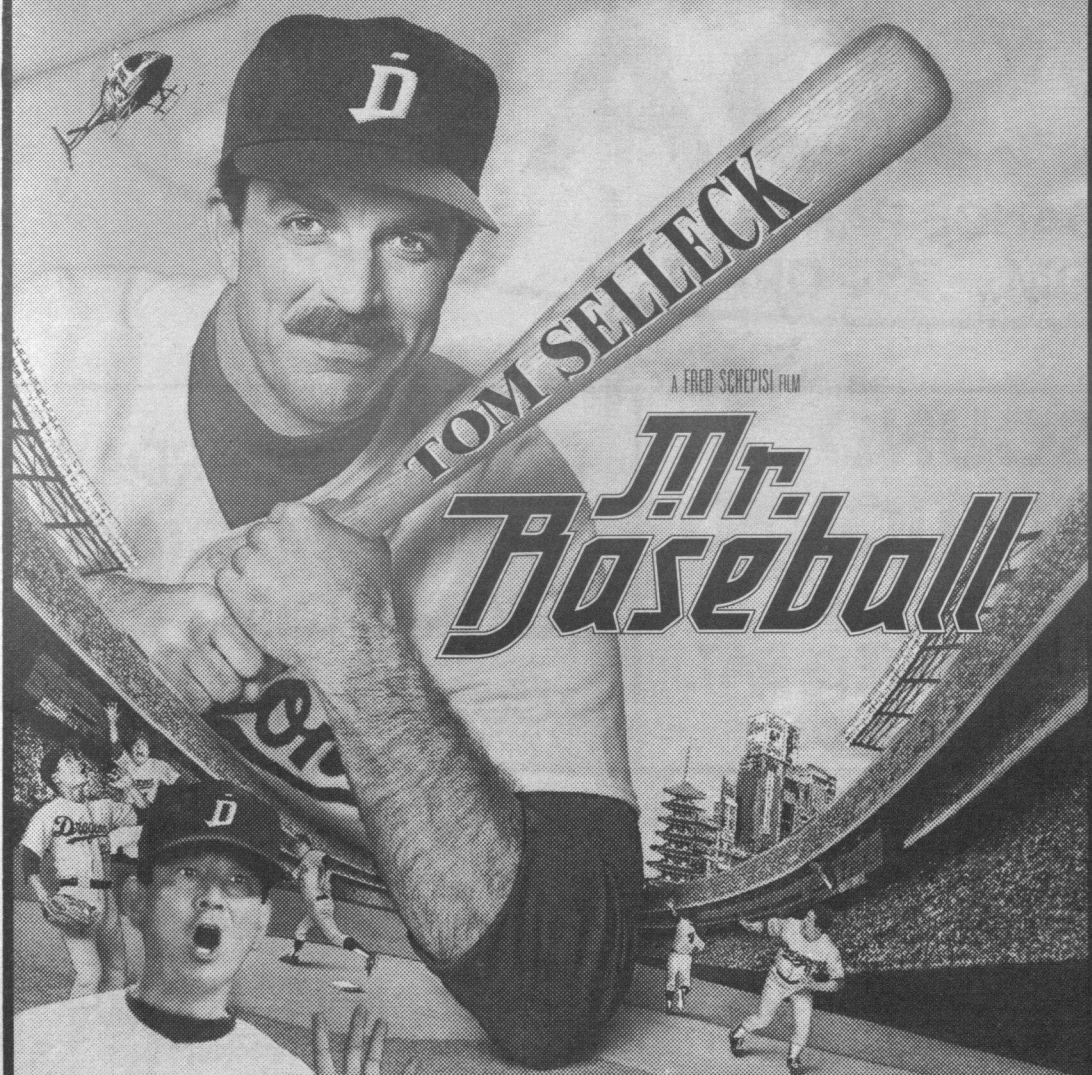
Of particular note is a band called **Gruntruck**, who we've been following since their first album came out last fall. The second, *Push*, is due for release Oct. 6th on Roadrunner/Third Mind, and it is some groovy shit. The twelve-track release is true to the original grunge style, but **Gruntruck** has added a certain trashy edge, a la **Guns and Roses**. *Push* takes the best of two unrelated sounds (whose idea was it, anyhow, for **Soundgarden** to open for **Guns**?) and weaves them together into something new and interesting.

Gruntruck just came off of a successful tour of colleges, including several dates in the Northwest with fellow Seattle band **Alice In Chains**.

Maybe the recent success of Seattle bands playing live is indicative that there is a future for this scene. **Soundgarden** and **Pearl Jam** did well, from what I hear, at Lollapalooza all summer. **Alice In Chains** and **Gruntruck** comfortably pulled off a brief tour, and now the orgy of Seattle success should calm down for awhile.

Don't lose faith. Seattle still has plenty to offer, and there's no reason to make a joke out its success. Only time will tell, but we think that when the leading bands resurface with new music, there will be just as much, if not more, in those albums to keep them floating on a cloud of success for a long time to come.

He's the biggest thing to hit Japan since Godzilla.



UNIVERSAL PICTURES PRESENTS AN OUTLAW PRODUCTION IN ASSOCIATION WITH PACIFIC ARTISTS "MR. BASEBALL" DENNIS HAYSBERT KEN TAKAKURA WITH JERRY GOLDSMITH
EXECUTIVE PRODUCERS JOHN KAO JEFFREY SILVER PRODUCED BY THEO PELLETIER & JOHN JUNKERMAN SCREENPLAY BY GARY ROSS AND KEVIN WADE AND MONTE MERRICK
DIRECTED BY FRED SCHEPISI CASTING BY DOUG CLAYBOURNE AND ROBERT NEWMYER MUSIC BY FRED SCHEPISI A UNIVERSAL PICTURE

COMING SOON TO A THEATRE NEAR YOU

Essence
Presents
another
Groovy
Coffeehouse

Thurs., Oct. 8
3:30 - 10:00
P.A. Lounge

Live Music,
Poetry readings,
and munchies

SGA Funded

LOOP

LOUNGE



DANCECLUB

WORLDCLASS D.J.s SPIN THE SMART MIX FOR PEOPLE ON A HEALTHY AURAL DIET. HERE'S A SAMPLE...



RED HOT CHILI PEPPERS • CURE • JAMES BEASTIE BOYS • PEARL JAM • T99 • SOUP DRAGONS • BLACK SHEEP • BLUR • EPMD • JANE'S ADDICTION • THE SHAMEN • J&M CHAIN • VIOLENT FEMMES • L7 • SONIC YOUTH • SMASHING PUMPKINS • A TRIBE CALLED QUEST • LORDS OF ACID • KC & THE SUNSHINE BAND • THE STRANGLERS • 25TH OF MAY • DEE-LITE • APOTHEOSIS • SISTERS OF MERCY • MUDHONEY • PUBLIC ENEMY • BARRY WHITE • RIDE • MY LIFE WITH THE THRILL KILL CULT • FRONT 242 • REM • U2 • JAM • CLASH • NEDS • ATOMIC DUST BIN • STEREO M.C.s • ETC...

LIVE VENUE

WATCH FOR SPECIAL LIVE SHOWS. ACTS LOCAL TO INTL. THESE ARE SOME BANDS THAT HAVE PLAYED THE LOOP.



FAITH NO MORE • NINE INCH NAILS • APB • THEY MIGHT BE GIANTS • SCHOOLY D. • GANG OF FOUR • THE FEELIES • UNTAMED YOUTH • KILLING JOKE • JOHNNY THUNDERS • THE SMITHEREENS • HENNRY ROLLINS BAND • DUMP TRUCK • SILLY RABBITT • FLESH FOR LULU • THE SELVES • GIMMIE THE GUN • SQUARE 1 • BARRENCE WHITFIELD & THE SAVAGES • SWEET LIZARD ILLTET • RICHARD LLOYD • THE SILOS • KONK • CLOSE LOBSTERS • MIRACLE LEGION • THEY EAT THEIR OWN • SCRAM • DIG • YOUR MAMA • ANYTHING BOX • LUCKY 7 • WINTER HOURS • BILLY GOAT • DREAD ZEP

THE LOOP IS

SWIRL

ON

THURSDAYS

D.J. DANCE PARTY
FREE ADM. .75¢ DRAFT

WRECKING BALL WEDS.

GIRLS ADMISSION FREE

\$1.00 DRAFT • \$2.00 SOL

SOUND CONDITIONED

MUST BE 21 YRS.

DANCING WED-SAT.

NO BONEHEADS!

FRIDAY - SATURDAY FREE ADMISSION

BEFORE 10:30 p.m.

\$1.00 DRAFT until 11:00

DIRECTIONS:

FROM CAMPUS OUT OF GATE 4 - GO RIGHT ONTO RATZER RD. - GO TO END & MAKE LEFT ONTO VALLEY RD. & GOTO END & MAKE LEFT ONTO RIVERVIEW - TAKE RIVERVIEW TO 46 EAST - 46 EAST TO RT 3 EAST - PASSAIC AVE. EXIT - RIGHT OFF RAMP - FOLLOW TO THIRD TRAFIC LIGHT - MAKE LEFT ONTO VAN HOUTEN AVE. - FIRST LIGHT MAKE RIGHT ON BROADWAY - LOOP IS ONE BLOCK ON RIGHT

373 BROADWAY, PASSAIC PARK, N.J. 365-0807

WPC FORUM

By Gerald R. Brennan

S.G.A. ATTORNEY

It's almost October. Leaves are changing. The early morning is crisp and chilled. And it's time for the law school entrance exam, better known as the LSAT.

Every year thousands of students across the country submit to an intense, four to five hour exam, a good grade on which they hope will get them into law school. Many will have paid for courses to prepare them for the exam at the cost of several hundreds of dollars. Others purchase practice books and study for hours, all with the purpose of joining a profession held in the public esteem somewhere between a convicted felon and a used car salesperson.

This annual ritual begs the question: Why? When students ask me about law school—that's the first question I pose—Why? Why do you want to go to law school and why do you want to be a lawyer?

These are not silly obvious questions. Law school requires a commitment of at least three full years, usually between the ages of 21 to 25, the prime years in anyone's life.

A good score on the LSAT shows you have the intellectual ability to study law. It's not the complexity of the subject matter which will overwhelm you in law school, it's the sheer volume of the work. Professors will delight in snowing you with pages upon pages of cases to prepare for the next class with the devious intent of preying upon the unprepared.

Unlike college, usually there is only one final examination for the course and your grade on the final is your semester grade. Never mind that you

had the flu and were thinking in a fog during the exam. Your grade is what you did that day. Sort of like an attorney's performance in court—you either conquer the moment or you don't. If you torpedo the exam, you can't do a paper for extra credit.

Plan to forfeit your social life in law school. You will be studying at night and on weekends. Holidays will not be respected. In my second year of law school, I had my final exam in income tax for the fall semester on January 2. I rang in New Years Day without football, turkey, or festivities, just 10 hours pouring over my case book and the I.R.S. code.

At the end of three years you still will not be a lawyer. You will have to pass a two day, 11 hour examination to obtain a license to practice law in the state of your choice.

Law School requires commitment and before enrolling you should reflect upon your motivation.

I think there are two ways to view the practice of law, either as a business or a service. As a business, the bottom line is profit. Lawyers speak in terms of numbers of billable hours, in other words, how much time an attorney can bill a client.

I once interviewed with a large trial firm in Atlantic City. One of the partners told me flat out that the law is not a profession, it's a business. The firm expected its attorneys to bill at least 50 hours a week. To generate 50 billable hours, an attorney would have to work 65 to 70 hours a week.

I noticed a picture of two small children on the partner's desk. I asked him that if he worked 65 to 70 hours a week, when did he see his children, he said usually on Sundays. Since I had small children and wanted to see them more often than that, I knew my view of the law and that of the partner's were not compatible.

The moral is if you go into law primarily to

make money, be prepared for long hours at tedious work. You better also be prepared for the stress generated by the demand to produce billable hours.

Only when law is viewed as a service does the profession and the need for it seem to make sense. We human beings are not fair with each other all the time, hence the need for lawyers. If we always treated each other with fairness, justice and reasonableness, or in other words, if we treated others as we would have them treat us, lawyers would be superfluous. But we don't. So lawyers help to control and regulate human relationships and interaction.

Lawyers have the opportunity to restore balance and fairness in social intercourse. Lawyers can be peacemakers and defenders of the weak, although all too often they are not.

But no other profession can offer that chance. Like a competent physician, lawyers can heal a sick human condition whether it be a divorce, a dispute between neighbors or protecting the defenseless.

Shakespeare notwithstanding, the law can be a force for good, if the profession is practiced rightly.

Before you decide to go to law school, get a sense of what a lawyer is and does. Enroll in as many law related college courses as possible. Take time and go to your county courthouse and sit in on cases being heard. See what a lawyer does first hand. You will recognize quality and well as incompetence.

Then before you invest thousands of dollars in student loans which you will have to repay and three years of your young life ask yourself—why do you want to be a lawyer? Only you are the ultimate judge of your answer.

LETTERS CONT.

Decision-making authority eludes women

FROM PROF PAGE 6

and for them) rather than address the real issue. The search for the Women's Center coordinator should not have been subject to the traditional constraints; that is, having men make the final decisions. However, to yield institutional power in this instance would have been tantamount to recognizing the expertise of women and our right to be heard. Apparently, this is too threatening. If women were heard in this search, might we demand to be heard elsewhere?

The administration has succeeded in establishing and promoting the window dressings of equality: the Office of Minority Education, the Affirmative Action Advisory Committee, the Sexual Harassment and Bias Harassment Panels, etc. In spite of these trappings, WPC remains unchanged, unwavering in its misogyny. I find their rhetoric empty and in the final analysis, their actions speak louder than words.

If it not too late for Dr. Speert to apply this basic lesson in "sexism 101". If he has learned it, he will recommend to the Board of Trustees that the appointment of the candidate selected by Dean Krell be withdrawn and he will work with Women's Studies to create a process which honors women's expertise and women's voices.

Dr. Carole Sheffield

Professor of Political Science and Women's Studies
Director, Women's Studies Program

Futile search for aid ends in disgust

Editor, The Beacon:

There is always something at WPC to confuse and endanger any budding order in students' lives. I would like to share a story that might feel painfully similar to other students, and hopefully inspire a brief glint of mercy in the hearts of our esteemed administrators.

Three and a half years ago, I came to WPC as a Minority Scholar, with a student loan and high hopes. I won the Notable Freshman Award, and I thought I could make a home for myself here.

The following semester I was told by Financial Aid that my parents made too much money, so I would no longer be permitted to use my loan. I started that semester to work two jobs just to eat and pay for books and expenses.

Since then, I've had problems with registration, Financial Aid, Residence Life, and all the other offices that control the comings and goings of WPC students.

This summer, I moved out of my parents' house. Not only am I not entitled to aid under their roof, but now I can't even be considered independent

until 1994, or my 24th birthday, either of which is too far off. I had to start going part-time, which also meant the loss of my scholarship, because we all know this institution's cockeyed definition of Satisfactory Academic Progress.

Today, I received a call from Ginny Way, who employs me at the Student Center, regarding paperwork for Financial Aid. It turns out that all along, Helena Myers (Financial Aid) has expected a stack of paperwork from me, which I was never informed about (it allowed to "slide" for my first check), and without which, I can't get paid. What's even more cozy about the whole situation is that I'm expected to somehow ditch work, zip down to Raubinger (on the off-chance that there will be someone in the office at 4 p.m. on a Friday) and do this all before 10 a.m. Monday, and that's Myers' way of being gracious.

All this has fast become intolerable. Maybe the American dream is only for the rich, because it seems every obstacle has been laid in my path, and I can't be bothered with this particular merry-go-round anymore.

I think I speak for most of us at WPC when I say that I feel alienated by the staff and administration, as though my purpose here were to ensure their employment, not the other way 'round. I give up.

Sheli Rosa

Part-time Junior, musical studies

Editor's Note—Sheli Rosa is the Insider editor of *The Beacon*. Her views do not necessarily represent those of *The Beacon* staff.

Financial Aid Guaranteed

Quick & Simple Form

Scholarships, Grants, Etc...

Income & Grades **DO NOT MATTER!** Everyone is Eligible!!
You are Guaranteed in writing to receive Money!!!

Scholarships, Grants, Etc. Available Now

This type service has helped students Since 1975

Helping WPC Students since 91/92 semesters.

For a free Application, **CALL NOW**

\$
for
School

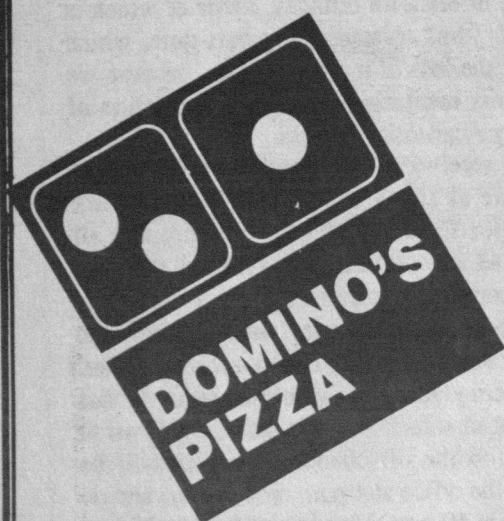
J&S Academic Assistance

(201) 305-8812

7 Days, 9a.m.-9p.m.

\$
for
School

DOMINO'S PIZZA DISCOUNTS PRICES FOR WPC STUDENTS

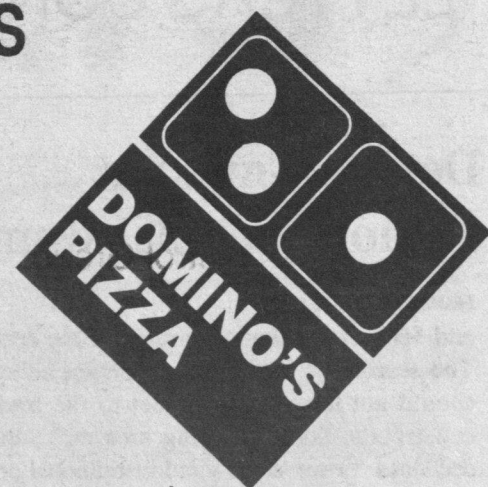


MED. CHEESE PIZZA ONLY
\$5.95 TAX INC.

LARGE CHEESE PIZZA ONLY
\$7.50 TAX INC.

6 PACK COKE/DIET COKE ONLY \$2.79

*TOPPINGS XTRA



**FREE DELIVERY IN 30MIN OR LESS
GUARANTEED OR \$3.00 OFF**



427 - 3030



OPEN : MON - THURS 11:00AM - 11:00PM

FRI & SAT 11:00AM - 1:00AM

SUN 11:00AM - 12:00PM

WPC-TV covers Pioneer action

By Bill DiGiovanni
SPORTS CONTRIBUTOR

WPC sports television will broadcast several WPC athletic games. The television sports program consists of students participating in all aspects of production, including producing. These games will be broadcast live on two channels, WPHT-TV channel 8 which

can only be seen on the college campus television system, and PCN-TV channel 19 which can be seen throughout Passaic County.

The Pioneer pre-game show will be broadcast one half-hour before game time. The show will have interviews and discussions about the upcoming games on campus. A special feature on the show will

be a trivia question in which viewers will be asked to write and mail in an answer for the opportunity to win free prizes.

The first televised event will be a football game on October 2 featuring the WPC Pioneers hosting the Cougars of Kean College. The Pioneer pre-game show starts at 7:00 p.m.

The following schedule is listed below.

10/2 WPC Football vs. Kean at 7:00 p.m.

10/6 WPC Field Hockey vs. Drew at 6:30 p.m.

10/13 WPC Volleyball vs. Kean at 5:30 p.m.

10/27 WPC Volleyball vs. Stockton St. at 6:30 p.m.

10/30 WPC Football vs. Jersey City St. at 7:00 p.m.

X-Country braves foul weather

By John Coelho
SPORTS CONTRIBUTOR

Three words could describe the day for the WPC cross country teams last Saturday-Tropical Storm Danielle. But even in the muddy hills and windy flats of Van Cortland Park in the Bronx, the teams managed respectable performances at the Hunter College Invitational.

Leading the women with good efforts were Daina Thiel in 23:10 and Anabela Mateus in 23:32. Slipping their way to solid efforts for the men were Brian Morrow in 30:09, Brandon Villarreal in 32:25, and Ed Eder in 32:41.

The team continues its season on Friday Oct. 2 at Holmdel County Park, for the N.J. State Championships.

MEDICAL CARE

When you need it!

Mantoux Tests

School Vaccinations

General Medical Care

NO APPOINTMENT NECESSARY!

904 - 9898



Immediate Medical
Care Center

705 Hamburg Tpk. Wayne
(in the Shop Rite Plaza Mall)

The BEACON

SPORTS STAFF

Needs

Photographers

come to SC 310



INTERNSHIP PROGRAM

Mention the name "Castrol," and people quickly think of premium motor oil. But, in fact, Castrol worldwide is a recognized lubrication specialist in fields that go far beyond Automotive, like Metalworking, Marine, Aviation and Aerospace. This expertise is delivered to the North America marketplace through Castrol Inc., a member of the worldwide Castrol Group.

Castrol Inc. has an Internship available from October 1992 to May 1993 and September 1993 to May 1994 based at its Corporate Headquarters in Wayne, New Jersey.

This two-year internship provides exposure and training in the areas of:

- Marketing
- Sales
- Supply and Distribution
- Corporate Finance
- Human Resources and Administration

The hours will be flexible and approximately 15 hours a week.

To qualify, you must be a full-time Junior Student in the Business School with a minimum GPA of 3.0. Courses in Economics, Algebra, Business Management and Accounting are highly desirable, and a working knowledge of Lotus 1-2-3 is a plus. This position starts at \$9.00 an hour.

Please send a résumé and an up-to-date transcript to Castrol Inc., 1500 Valley Road, Wayne, NJ 07470, Attention: Robyn Tennesen or call (201) 633-2344 for further information. Interviews will be scheduled in September.

Rangers won't repeat in Patrick Division Capitals to take crown this year

By Albert Stampone
STAFF COLUMNIST

Making predictions. I hate it more than peanut butter; and I am allergic to peanuts. Nevertheless, let us leave nausea behind so we may plod through to bigger and better things.

Here it is, without further ado, making its only area appearance, the one and only: my 1992-93 National Hockey League season preview; without apologies.

THE PATRICK DIVISION:

1) WASHINGTON- As perennial playoff underachievers, the Capitals baffle year after year. However, in what will be the closest divisional race, possibly ever, from top to bottom, the Caps will narrowly capture the top spot. There are no superstars, but there is tremendous commitment and work ethic.

STRENGTHS- The power play, the penalty killing, the big and mobile defense.

WEAKNESSES- The departure of Mike Liut leaves 32 year-old Don Beaupre as the only reliable last line of defense in goal.

PIVOTAL PLAYER- Beaupre. He went to the All-Star Game, but was mediocre in the Caps' first round playoff loss to Pittsburgh.

2) PITTSBURGH- The cry for a three-peat is on in Pittsburgh. Mario Lemieux is the best player in the world, as long as he stays healthy. The supporting cast is exceptional, although a loss will be felt by the retirement of Bryan Trottier and defection of Phil Bourque to the Rangers.

STRENGTHS- Lemieux, Jaromir Jagr, Kevin Stevens, Ron Francis, Rick Tocchet, Joe

Mullen, etc.. The firepower here is awesome. Tom Barrasso has also proven he is a money player.

WEAKNESSES- Incredibly, the Pens still do not have a head coach. Scotty Bowman has not been offered the money he has requested to return behind the bench once more.

PIVOTAL PLAYER- Barrasso. If he does not play well,

center. Laurie Boschman was lost to Ottawa, Patrik Sundstrom went back to Sweden, and Peter Stastny wants to go back to Quebec. The battle is on in training camp for three open spots.

PIVOTAL PLAYER- MacLean. MacLean needs to return to form for the Devils to seriously compete. His leadership was sorely missed.

Off the Draw with... Albert Stampone

the Pens will suffer.

3) NEW JERSEY- The Devils have a new coach, new uniforms, and some new faces. They also have John MacLean back after having missed the entire '91-92 season. Herb Brooks will guide the team after replacing Tom McVie in June. The Devils are coming off their best season a year ago. This year's squad has the looks of being better.

STRENGTHS- The defense is as solid as they come. At times last year they were the best six-man unit in the league. Eric Weinrich is gone, possibly making room for highly touted Scott Niedermayer. The Devils are deep in talent on the wings. Add Maclean to list that includes Claude Lemieux, Stephane Richer, and newly acquired Bobby Holik among others, and there is reason to believe New Jersey will score lots of goals this year.

WEAKNESSES- The Devils have a problem again at

4) NEW YORK RANGERS- Instead of playing to win in the division finals against the Pens, New York played not to lose. Their Cup drought takes a bigger toll on the players than many people believe. It is difficult to believe they can duplicate last year's regular season performance, mainly because the division competition is much stronger, but also because it got them nowhere in the Cup race. Mentally, it weights like a two-ton slate.

STRENGTHS- Brian Leetch, Mark Messier, Mike Gartner, and the emergence of Tony Amonte.

WEAKNESSES- The skill level of the defense drops way off after Leetch and James Patrick. Mike Richter needs to bounce back big time following his playoff performance.

PIVOTAL PLAYER- Messier. His health is still questionable.

5) NEW YORK IS-

LANDERS- There is great improvement on Long Island. Unfortunately, it will not make a difference playing in the best division in hockey.

STRENGTHS- Three 40-goal scorers in Pierre Turgeon, Derek King, and Ray Ferraro.

WEAKNESSES- The Islanders just may have themselves two backup goalies in Mark Fitzpatrick and Glenn Healy. Who is the legitimate starter?

PIVOTAL PLAYER- Fitzpatrick. The Isles are counting on him to emerge as a leader.

6) PHILADELPHIA- Welcome to Lindrosville. The future is bright here, but do not expect much this season. Though the Flyers will pack them into the Spectrum, there are many holes to plug.

STRENGTHS- Lindros, Mark Recchi, and Rod Brind'Amour.

WEAKNESSES- It is scary to think of how many goals the Flyers will cough up this season with a talent-thin defense and young Dominic Roussel getting the bulk of the work in goal.

PIVOTAL PLAYER- Roussel. If Roussel stumbles to

the point of where he cannot handle at least half of the work load this season, the Flyers will have a problem they probably will not be able to handle.

As for the rest of the league, my fingers grow weary, as does my word processor. Here, briefly, is a peek.

THE ADAMS DIVISION:

- 1) Montreal
- 2) Buffalo
- 3) Quebec
- 4) Hartford
- 5) Boston
- 6) Ottawa

THE NORRIS DIVISION:

- 1) Detroit
- 2) Chicago
- 3) St. Louis
- 4) Minnesota
- 5) Toronto
- 6) Tampa Bay

THE SMYTHE DIVISION:

- 1) Vancouver
- 2) Winnipeg
- 3) Edmonton
- 4) Los Angeles
- 5) Calgary
- 6) San Jose

Field hockey wins behind Brecht

By Barbara Blake
SPORTS CONTRIBUTOR

As the fog rolled in last Saturday, so did the WPC field hockey team. The Lady Pioneers dominated the game in which they defeated Montclair State, 5-1, throughout wind, rain, and mud.

"We were up for the rain, and they weren't," stated senior co-captain Danielle Tracy. "We are just a stronger team mentally and physically."

The first half was dominated by the Lady Pioneers' offense and its break-aways. Three of the five goals were scored in this half. The first goal was scored by senior link Cindy Creaney, unassisted. Two minutes later, senior forward Karen Brecht passed to Danielle Tracy, who scored for a 2-0 lead. Tracy then forced the MSC goalie to leave the net and passed to Brecht for an easy goal increasing the lead to 3-0.

With five minutes left in the first half, the Lady Red Hawks scored. For the rest of the period, freshman goalie Erin Bowden got a rest as the ball was returned to Montclair

territory. The Lady Pioneer dominance was shown by seven shots-on-goal to MSC's two shots.

The second half proved that the Pioneers were not satisfied with a 3-1 lead. They drew penalties to keep the ball near MSC's goal. Freshman forward Terry McKean took advantage of a down goalie for an unassisted score. Later in the half, Creaney drew a penalty and passed to Brecht for a goal. The rest of the half was controlled by the Lady Pioneers, who had a 14-0 shots-on-goal ratio.

The outstanding player of the game was Karen Brecht, who had two goals and one assist.

"I'm excited. I made my quota for the game," stated Brecht. "I haven't scored two goals in one game for the longest time."

Coach Cyndi Gramlich-Covello feels this is just the beginning of the Lady Pioneer dominance.

"We were ready even with the weather conditions," stated Gramlich-Covello. "They were psyched for the game, I'm not surprised by the five goals."

Volleyball serves up win

By Juliann Popp
SPORTS CONTRIBUTOR

The Lady Pioneer volleyball team registered another victory last Tuesday as they defeated the Lady Gothics from Jersey City State College at the WPC Rec Center. The Lady Pioneers won three straight matches with the scores of 15-1, 15-5, and 15-3; respectively.

"They played excellent," stated Head Coach Sandy Ferrarella.

Coach Ferrarella, who was honored as the 1991 NJAC volleyball "Coach of the Year,"

said there was great hitting from co-captains Andrea Tutulic and Stacey Zweil, and spiker Patty Scrofani. Tutulic had three kills, and Zweil and Scrofani achieved four kills each.

Although the Lady Pioneers played a great game, the team needs to improve their communication.

"They're still hurting on that," Ferrarella said.

Four freshman have joined the Lady Pioneers. They are

Cynthia Ficarra, Carolyn Fuhr, Denise Gutowski, and Yoanna Rodriguez. Ferrarella is pleased with their performance so far.

"They've come along way and are fitting in right off the bat," Ferrarella said.

How have the Lady Pioneers improved since the beginning of the season?

"They are more together and the hitting is better," said Ferrarella. "The defense is coming along and the serving is excellent."

PERSONALS

Nick (Leakey)—I have your pictures. It seems to me that we haven't crossed paths lately. I think the City is calling us. We'll set something up-Duff (Leakey)

Rick and Steve—These rummy games are getting addicting. Get ready for the next tournament. Jim and Mark

The Brothers of Alpha Sigma Phi—would like to wish Josh M and Jason B a Happy B-Day. Alpha Sigma Phi

RUSH ALPHA SIGMA PHI
RUSH ALPHA SIGMA PHI
RUSH ALPHA SIGMA PHI
RUSH ALPHA SIGMA PHI
RUSH ALPHA SIGMA PHI

Rush Alpha Sigma Phi-September 29th at 8:00 in Hunzinger 109 and October 1st in Science 200B at 8:00.

TEP'S—Thanks for helping us get all wet. TEP's are Wild!! Love the Sisters of Alpha Sigma Tau

Liz L and Danielle (ASA)—I couldn't have asked for a better family tree. I love you guys! Fran To the best sisters anyone could ever have—Always keep up our "attitude of excellence" Love in ASA-Fran

Angel Hat Drinking Club—I just wanted to inform you that I like little girls! From Angle Duda, exec board

Noha (ASA)—OK-all I wanted was to see your guilt!! I'm done! I love you! Love Angel Maho

To ALL Angels in P210 and 212—I wanted to tell you that that was the best tasting Chicken Tonight I ever had! And to Otis—your WELCOME! Love the Angel Duda

Elleen (ASA)—Thanks for the Frozen Pizza and thanks for sitting up front with me Tuesday! Love Pat (ASA)

Craig (ASP)—I've checked out the rest and concluded that you are definitely the best-Love, an admirer

To the BOE's—Another social, another ceiling. Love the Innocent ASA'S

Hey Beta's—Hope you have good homeowner's insurance! Do you know Bob Villa? Love the ASA's

Lisa, Daniela, Kristen (D Phi E)—You guys are great roommates and sisters. We're going to have a great year. Love Samantha Eda (D Phi E)—Your a great president. We have top hand out again and actually have fun. Love Samantha

Jullann (D Phi E)—Happy 21st Birthday—"Don't Worry, Be Happy" I'm always here for you. Love Samantha

BZP Angel Jody—Because you're the best little sister anyone could have, I never want another! Remember I'm always here for ya! Love ya! Your BZP Big, Otis

To all Angels—Looking forward to a gret year with all the women. Good Luck

Angels in P 210 , 212 and Nightle—Hey women, It's going to be a great year. We can't wait for them Saturday nights events! Ha Ha! We Love Ya-Otis and Shannon To all Greeks—Hope you all have a good rush and a grat semester-Beta Zeta Phi Angels

To my Big Angel Shannon—Thanks for the delicious dinner. You're the best big! Love your little, Angel Cara To Angels Andrea, Jody and Laura—I couldn't have asked for better roommates or friends. This semester is going to be awesome! Love, Angel Cara

To Angel Bernice—Thank you for all the great times we had together. You've always been a friend-Love Angel Smith

To Brigid—Would you like some tomatoes, pickels, and vodka?-Cathy

Maha (BZP)—Drunken Fool! Behave! I miss you sis! When are we going to YOUR bar? Love you Noha (ASA)

Jim (BOE)—Are your feet tired? Well they should be, you've been running through my mind all day! Love Angel Maha

San Genaro Crew (ASA)—Beautiful blond \$10, Joseph, 10 cents a dance, can I feed you. Love Prattl

Jenn (ASA)—I'm so happy things are alright again. You are really the best big. I love you-Darlene (ASA)

Colleen R, Danielle (ASA)—Smoothie lives! Hey, I got this round. "Lene" stay out of those bathrooms! Love you both Darlene (ASA)

Joey (Phi Tau)—Thanks for being a great listener and friend. P.S. Noha says HI! Love Prattl (ASA) Danielle, Colleen (ASA)—Thanks for making my summer enjoyable (especially laughing with my father about talking!) Love Prattl (ASA)

Noha, Darlene, Colleen (ASA)—You guys are great! Love ya's. Let's do contact! No more p-in in alleys! Love Denise (ASA)

Candy (ASA)—Thanks for being the best little sister! I Love You-Love Christine (ASA)

ASA SISTERS—I am so glad to be back. I missed you guys. I Love You! Sisterhood forever-Love Christine (ASA)

Candy (ASA)—Candy girl, you're my best friend—that's what you'll always be. We pledged together, now whine together, what a pair are we. Love in ASA-Dawn

ASA Beware—Helen Keller can see you now. Looking good you ASA's I love you roomies-Love in ASA Nacho

Colleen (ASA)—I reckon it was an awesome summer together! Do you always wear sunglasses at night? I love you! Danielle (ASA)

Prattl (ASA)—Keep your hands at your sides and CALM DOWN! Good luck this week -Love in ASA Danielle

BZP Angel Mana—Anytime you want to throw a party in our rooms, go right ahead! Ha Ha! We Love Ya-The Women in P212 and 210

Colleen Z, Denise, Noha(ASA)—UR the best! Next time we go out let's know where the bathrooms are ok? Darlene (ASA)

John B (Phi Tau)—You're the one in a million! Love you! Thnakds for making our lifetime! Your Trixter Fans (ASA)

Sisters of Alpha Sigma Alpha—Thanks for all the wonderful memories. They will last in my heart forever. Love in ASA-Maria

Toni (Phi Sig)—You can't hide from me. I see you everywhere, especially in my dreams. See ya soon.-Love an Admirer

Thank You Father Lou—for helping organize an excellent retreat. Y.I.T.B.-The Brothers of Tau Kappa Epsilon

Fran (ASA)—Thank you for everything. You are the best mom ever! We got good bivrations-I love you! Danielle (ASA)

Pizza Hut-Soory I missed dinner, but things are what they seem. Next time I'll fax you! Ask no questions! Stimpy

CLASSIFIEDS

Luxury Townhouse—to share—with private bedroom. 6 mi. to WPC-\$750 neg. + 1/2 until. Call 616-8488.

SPRING BREAK '93—SELL TRIPS, EARN CASH AND GO FREE!! Student Travel Services is now hiring campus representatives. Ski packages also available. Call 1-800-648-4849.

Part-Time Telemarketing—Looking for motivated people to work 9 to 1 p.m. or 4 to 8. Average \$8-12 per hour. Flexible Days. Great for students. Call 227-8802.

NTE Tutoring—Also SAT's: English, Math, other subjects. Experienced, certified, caring teacher. Excellent references. Call 447-4839.

GREEKS AND CLUBS-RAISE A COOL \$1,000,000—In just one week! Plus \$1,000 for the member who calls! and a FREE HEADPHONE RADIO just for calling 1-800-932-0528 ext. 65.

Are you looking for extra income for the coming holidays?—We have immediate part-time positions available with our annual show. Call 696-3485.

Boys and Girls Club of Paterson—Youth Services after school program serving inner-city youth. Searching for staff for the following programs; Child care, arts and crafts, dance, drama, cooking, tutoring, recreational counselors, and lifeguards. Contact Robert at 279-3055.

Wanted—Campus Representatives to promote ski and Spring Break vacations!! Earn free trips and cash!! Call 1-800-862-7325.

Transportation—Freshman student needs ride to Philadelphia and back. If there is anyone going by way of 30th Street Station or West Chester University on Oct. 10th and 11th, Please call Leigh Kofsky at 956-5749. I will pay my share for gas and tolls.

Child Care Needed—Warm, sensitive person to care for school aged child. Monday-Thursday from 3-6. Non-smoker -own trans. preferred. Permanent position. References required. Call after 791-6507.

Typing—In my Haledon home-\$2 per page. Call Sandra at 904-0903.

ATTENTION—Campus Reps needed to promote Spring and Winter reak vacations. Earn free trip and cash. Call 1-800-862-7325.

Help Wanted/Part-Time—Wanaque firm seeks mature individual to conduct telephone interviews. No sales, will train. Attn. to detail, must speak fluent Spanish. 2-3 eves/wk, 5:30-8:30. Call Joan at 831-8770 days.

Available 11-1—3 bedroom apartment in Hawthorne with basement and attic. \$860 and utilities-2nd floor of 2 family house. Call 423-5417.

BE A SPRING BREAK REP—Earn free trips and the highest Commissions! Cancun, Daytona, and Jamaica from \$159. Call Take A Break Student Travel today at 1-800-32-TRAVEL.

Thinking about shaping up and slimming down?—Call a certified personal trainer at reasonable prices-Jill at 942-8220.

Small Real Estate Company—in Wyckoff is looking for part-time receptionist. 4-5 days a week from 3-6 p.m. Must have good typing skills. Call Joan at 891-4411.

Looking for young man to trim hedges—and general yard work. Call Joan at 891-4411.

Loving Child Care Needed—for 2 1/2 and 8 month old. In Wayne-own room, bath and car. References required. Non-smoker. Licensed Driver. If interested call Days/evenings-7:30-5:30call Cindy at 628-7202 even if there is some class conflict.

Small Real Estate Company—in Wyckoff is looking for part-time receptionist. 4-5 days a week from 3-6 p.m. Must have good typing skills. Call Joan at 891-4411.

Looking for young man to trim hedges—and general yard work. Call Joan at 891-4411.

Loving Child Care Needed—for 2 1/2 and 8 month old. In Wayne-own room, bath and car. References required. Non-smoker. Licensed Driver. If interested call Days/evenings-7:30-5:30call Cindy at 628-7202 even if there is some class conflict.

Small Real Estate Company—in Wyckoff is looking for part-time receptionist. 4-5 days a week from 3-6 p.m. Must have good typing skills. Call Joan at 891-4411.

Looking for young man to trim hedges—and general yard work. Call Joan at 891-4411.

Loving Child Care Needed—for 2 1/2 and 8 month old. In Wayne-own room, bath and car. References required. Non-smoker. Licensed Driver. If interested call Days/evenings-7:30-5:30call Cindy at 628-7202 even if there is some class conflict.



FATSO FOGARTY'S
EVERY SUNDAY
NEW **ALTERNATIVE MUSIC NIGHT**

No Cover
\$4.00 Pitchers Till 11:00
(5.00 pitchers after 11:00)

1.50 Bottled Beers
2.00 mixed drinks

8pm to closing.
Party with DJ Billy Simms

WATCH for OUR OTHER **THEME PARTYS**

582 RIDGE RD. No. ARLINGTON 201 991-9885

Beacon Sports

SEPT. 28, 1992 • WILLIAM PATERSON COLLEGE

Brecht leads field hockey

Volleyball defeats Jersey City

Cross country action

Pioneers keep marching on

Coach Gallagher improves program

By Brian Yaworski
SPORTS CONTRIBUTOR

After completing its best season in history last year with eight wins, two losses, and one tie, the Pioneer football team has jumped out to a 3-0 start this season. The squad is now getting ready for the next big step. Some say that step is to advance further into the post-season, while others feel the team is ready to take a trip to the NJAC championship. Head Coach Gerry Gallagher refuses to look that far ahead.

"Every game is a key game. We have to take them one at a time."

Gallagher, an alumnus of WPC where he lettered for two years as a running back, is now entering his 20th year of coaching, his fourth with the Pioneers. He is the only coach in school history with an overall winning record. Also, Gallagher was voted NJAC "Coach of the Year" last season after leading the Pioneers to their first ever post-season appearance. He is considered a master of the Wing-T offense, with his teams of the past exemplifying this by their high scoring output.

Gallagher feels that the defense is the strength of the team, and that it has improved

both physically and mentally. The first team is very experienced and anchored by sophomore linebacker Marc Eason and junior defensive back Craig Paskas. Eason, last year's "Defensive Rookie of the Year", is considered to be a big-play maker, and has started this season right where he left off last year. Paskas is looking to defend his title of "NJAC Defensive Player of the Year".

"He not only is a great player," Gallagher said of Paskas, "but he shows great leadership. He is one of the toughest players I have ever coached."

The offense is again being led by junior running back Al White.

"He is a super player," claimed Gallagher. "His performance against Trenton State, playing with injury, was outstanding."

Gallagher feels that it is the other ten offensive players that allow White to be as good as he is. This year junior quarterback Rich Smith has taken over the helm, and is being backed-up by Tim Taylor, who also doubles as the squad's punter.

"Smith has paid his dues sitting on the bench, and has worked hard during the off-season. I expect good things from him, and from Taylor."



Head Football Coach Gerry Gallagher

Gallagher feels the key to the season is to stay focused, and "take them one game at a time. Every game is a dogfight, and we must execute and perform every time we go out onto the field."

In order to be as successful as last year's squad, the Pioneers must avoid serious injury and maintain a high intensity level. If this occurs then the team can attain the same level and possibly improve upon it.

Gallagher is a firm believer

in academics. At least once a week he talks to his players about priorities. He insists they keep up their grades and attend classes.

Gallagher also knows that how well you do over the long haul determines a coach's success. He wants to establish a solid quality program that "year in and year out is consistently competitive." As a result, other teams will no longer be able to take WPC football lightly.

By Walter Elliot
SPORTS CONTRIBUTOR

Performances by fullback John Trust and quarterback Rich Smith highlighted WPC's 17-6 gridiron win over Western Connecticut State University Saturday night.

Trust ran for 178 yards on 24 carries, while Smith completed nine of 15 passes for 158 yards, including touchdown passes to junior halfback Al White and senior halfback Kevin Harmon.

Both teams slowly adjusted to field conditions before the Pioneers scored early in the second quarter on a 15-yard pass from Smith to White. John Moyer added the extra point and a 26-yard field goal to give WPC a 10-0 lead.

White, who rushed for 50 yards and caught two passes for 24 yards, had to leave the game because of a recurring ankle injury.

The Colonials mounted a third quarter scoring drive for six points, a bad snap accounting for the missed extra point.

The Pioneers answered back when Harmon scored on a 54-yard pass from Smith, late in the third quarter.

Another threat by the Colonials was thwarted by a Craig Paskas interception, sealing the victory for the Pioneers.

PIONEER SPORTS WEEKLY PLANNER

Football

vs. Kean
Oct. 2 (H)
7:30 p.m.

vs. Upsala
Oct. 10 (H)
1:30 p.m.
Homecoming '92

Soccer

vs. Upsala
Sept. 28 (H)
7:00 p.m.

vs. Jersey City St.
Sept. 30 (A)
3:30 p.m.

vs. Trenton St.
Oct. 7 (A)
7:30 p.m.

Volleyball

vs. Montclair St.
Sept. 29 6:00 p.m. (A)

vs. Rutgers-Newark
Oct. 6 6:00 p.m. (A)

vs. NYU
Oct. 8 7:00 p.m. (A)

vs. Ramapo
Oct. 10 noon (H)

Field Hockey

vs. Trenton St.
Sept. 29 7:30 p.m. (A)

vs. Rowan
Oct. 3 1:00 p.m. (A)

vs. FDU-Madison
Oct. 5 4:00 p.m. (H)

vs. Drew
Oct. 6 7:00 p.m. (H)

vs. Kean
Oct. 10 1:00 p.m. (A)

Cross Country

N.J. Track Coaches
Assn. State Coaches
Oct. 2 9:30 a.m.