

The Beacon

Serving the college community for over 50 years

Vol. 55 No. 6

William Paterson College

September 19, 1988

Committee faces AIDS issues

BY STEVE MARGOLIS
NEWS CONTRIBUTOR

It would only take "one AIDS case of [a popular student] on campus, someone who walks among all of us, and we would not have to educate [the students] anymore. Anything we would say [would be] listened to like crazy. But until that happens, and of course I hope it never does, we are all just educating against some unseen virus that will have its effects perhaps years from now," stated Robert Peller, associate dean of students.

Peller is one of six professionals currently

serving a three-year appointment on the William Paterson College Committee for AIDS Education. His specific responsibilities include serving as spokesperson for the College in handling public information with the media about AIDS-related issues.

According to the current William Paterson College student handbook (pages 88-91), "The goal of all members of this committee is to reduce high risk behavior and increase coping skills and emotional support in the William Paterson community by mounting the most comprehensive and effective

education campaign that money and collective effort allow."

A key member of the committee who coordinates

"We are dealing with an age group that considers themselves ... invulnerable."

the training program, preventive education, and the evaluation process is Dr. Richard Blonna, the committee's representative from the Department of

Health Science. Dr. Blonna said that a list of training needs and public information needs was established in priority order for the

perceived needs of the campus.

"The training was supposed to focus more on empowering those people in positions of authority with not

only extensive knowledge but with the [necessary] skills," he said. "For instance, your athletic coach must know how to prevent the transmission of AIDS from blood spills. Your food service worker must know about preparation of food and potential contamination. Your campus police officers must be [knowledgeable] about the fact that AIDS is not transmitted through casual contact."

Committee members sent letters and made personal contact with the administrators in charge of the different target groups. Some of the groups agreed to

See AIDS, page 6

Students asked to help hurricane victims

The Political Science Department is heading a campaign to help residents in the Caribbean who lost housing and personal items during Hurricane Gilbert.

"Professor Carol Sheffield and myself felt that it would be appropriate for the college to give help," said Omari Obadele, political science professor. "The drive will be a benefit to people in both Jamaica and Mexico, but we feel that it is also a contribution to the hands-on education of political science students."

Obadele said the WPC-

Caribbean Relief drive is seeking canned goods, clean pants, shirts and dresses, good shoes, sheets and packaged (new) underwear. Items can be left in the receptacle in the Student Center or the political science office, science room 336B. Checks should be made out to William Paterson College-Caribbean Relief, and left with M. Louis-Ferdinand in the political science office.

"[The drive] will help to restore WPC's reputation for community involvement," Obadele said. The drive will end Sept. 30.

Class president vacancies filled

BY NOREEN E. BRAUN
NEWS EDITOR

The SGA Constitution-Judicial Board (CJB) voted at an emergency meeting Thursday that Sophomore Raul T. Barriera and Junior William Mayo "must assume" duties as presidents of their classes.

Barriera and Mayo were elected as vice presidents of their respective classes last spring. During the summer, Caroline Padrone, who was elected junior class president, and Kenneth Beitel, who was elected sophomore class president, resigned, which raised questions about who was to fill the vacancies, as neither had yet begun their official

duties.

The SGA constitution was unclear about what should be done in this situation, but the CJB determined "... that upon notification of the permanent absences, resignation, or recall of the position of President, the Vice-President must assume the duties of the President."

Several class offices were vacated after Student Development found those elected did not have enough credits to be in the class they were elected to represent. The junior and senior classes have three vacancies each, and the sophomore class has one.

Henry Morris, director of Student Development, said he

"didn't think a large majority ran so they could beat the system," but because they did not realize they lacked credits. "We normally check (credits) after (the elections)," he said. "We have not normally had the problem we had this year."

Morris said in the future, credits will be checked before elections, but said it is difficult to do this because the elections are held before the spring semester ends. He said if a student fails a spring course, that could make him or her ineligible for office. Other students need pre- and

See CJB, page 7

Senate asks Speert about WPC merger

BY WAFI I. HOZIEN
ASSISTANT NEWS EDITOR

The Faculty Senate questioned WPC President Arnold Speert Thursday about rumors of a merger between WPC and Passaic County Community College (PCCC).

"We've been hearing things from the faculty and students of Passaic County Community College," said Janet Pollack of the Political Science Department. She asked if the merger is likely and how it will affect WPC students and faculty.

Speert said there is currently no agreement

between the two colleges. He said PCCC, which has the lowest enrollment of New

"We have no intention of... eliminating (PCCC)."

Jersey's community colleges, has been getting "insufficient support from the Board of Chosen Freeholders." There has been "just a lot of discussion during the past 18 months," he said, and some

ideas have been suggested, including having PCCC students take WPC courses. But he added, "...whether we will play a role or can play a role is yet to be seen. We have no intention of merging with other institutions or eliminating [PCCC]."

The Senate approved a memo about WPC's relations with PCCC stating that if any decisions are made, they should be brought to the attention of the Senate because "the Senate's function is to advise the president," said Irwin Nack, president of the American Federation of Teachers, local 1796.

Speert also commented on WPC's emeritus policy, in which retired full professors and faculty retain the title they held immediately before retirement. William Duffy, a member of the Senate Executive Committee, said the policy should be extended to include professional staff. Speert suggested the Senate Governance Council find another way to honor retired professional staff.

In other business, Linda Dye, vice chairperson, encouraged faculty members from several schools to fill Senate openings. Lois Wolf,

See SENATE, page 7

The Beacon Index

News

pages 1-7

Op/Ed

pages 8-9

Arts

pages 12-14

Campus Style

pages 15-16

Sports

pages 17-20

Campus Events

MONDAY

Helpline — General meeting at 5 p.m. Introduction meeting will be held on Oct. 10 at 5 p.m. Executive board meeting at 4:30 p.m. Come by the office and leave a message.

Sexual Health Care Center — The center provides counseling and reproduction health care for both men and women. Services include personal consultations, physical/pelvic examinations, and lab testing and treatment for sexually transmitted diseases for women. White Hall G-6, 1-4 p.m. For appointments call Planned Parenthood, Passaic County at 839-2364.

Chess Club — Nominations for Vice Pres. begin this Monday and close at the meeting on Wednesday, 6 p.m. Student Center Rm 308. Anyone who wants to be nominated should leave a note in the Chess Club mailbox in the SGA office. For further information Call Matt Harellick at 595-2157.

TUESDAY

Ultimate Frisbee Club — Experienced and new players welcome. First meeting in Student Center cafeteria, at 12 (noon). Any questions contact Joyner at 595-2777.

Jewish Student Association — Open House. Bagels and.....Come see what we're all about! Student Center Rm 324-325.

SGA — Legislature Meeting. All students welcome to attend. Student Center Rm 203-4-5. 5 p.m. to 8 p.m. For further information Call 595-2157 or stop by Student Center Rm 330.

WPC Christian Fellowship — Compassion video and worship. Join us. PAL lounge 7:30 p.m. For more information call Ken 423-2737.

Math Society/Math Club — We will be co-sponsoring the film Ramajan, at 3:30 p.m. in the Science building Rm 115. For further information call Matt or Kelly at 595-2158.

Creative Source Dance Ensemble — Auditions for new members in Jazz, Modern, Ballet, or Choreography are invited. Original repertory by students and guest choreographer Ruth Clark. Beginners welcome. 3:30 - 5 p.m. Gym C. For further information call Tracy 904-0014.

WEDNESDAY

Society for Creative Anachronism — Nominations for Vice Pres. begin this Monday and close at the meeting on Wednesday, 5 p.m. in the Student Center Rm 308. Anyone who wants to be nominated should leave a note in the SGA office. For further information call Matt Harellick at 595-2157.

People for Peace — Major introductory meeting. Ideas and keen minds welcome. 5 p.m. in Student Center Rm 306. For further information call Mike at 942-7048.

Outdoors Club — Open House. Attention skiers/outdoor lovers - Lake Placid winter break ski trip is being planned for Jan. 8 - 13th. Join us in planning whitewater rafting, ski weekends, cycling and much more. 3 p.m. Student Center 324. For further information contact Susan at 595-2157 or call Dennis at 595-2777.

THURSDAY

Inter Fraternity Sorority Council-Meeting at 6 p.m. in the Student Center. For further information, see the info desk on Thursday.

Men's Tennis — Meeting at 3:30 p.m. in Wightman Gym Rm 203. Males and females are welcomed to play competitive and recreational tennis with the Men's Tennis Club.

SATURDAY

Instructional Resource Fair — New Materials, New Books, Come and browse and see the latest instructional resources from the major publishing companies. No admission or pre-registration required. Co-sponsored by Pi Lambda Theta and Kappa Delta Pi, Education Honor Societies. 9 a.m. to 5 p.m. in the Student Center Ballroom. For further information call 595-2118.

DAILY

Semester Abroad — Applications are now taken for the overseas study program for Spring 1989. Openings in England, Denmark, Israel, Spain, Mexico, and possibly Australia. All majors may apply. Minimum requirement: one year of college and 2.5 cum. For information contact Prof. Satra, Matelson 317.

High School Bowl — All students invited to join our television studio audience. Keep your eyes and ears open for future announcements concerning dates and times. Administration, faculty and staff are cordially invited to participate as judge for the upcoming High School Bowl television tournament. For more information please contact Margaret Ohlendorf, Hobart Hall, ext 2656.

Jewish Student Association — Rm 320 in the Student Center or call 942-8545. Stop by our office and learn more! Mon.-Thurs. (9-2 p.m.).

FUTURE

Essence — Essence Magazine needs members! Please come to our first meeting Tues., Sept 27 at 5 p.m. at the Snack Bar in the Student Center.

Beta Phi Epsilon — Sept 27, 8 p.m. in the Student Center. The brothers and angels will

be holding a rush meeting for all interested men and prospective angels. See any brother or sister for more information. Thank you.

Catholic Campus Ministry Club — Interested in teaching Basic Religious Education for the retarded? Call us for class schedules at the North Jersey Development Center. Sponsored by The Catholic Campus Ministry Club. For further information call the center at 595-6184.

Catholic Campus Ministry Club — Interested in learning about being a Catholic or growing in your own faith? To find out more about the Rite of Christian Initiation program. Sponsored by the CCMC. For further information call 595-6184.

Catholic Campus Ministry Club — Lectors/Eucharistic and Music Ministry available at the CCMC. Classes are starting soon. Interested? For further information call the center at 595-6184 or come by the center.

Political Science Club — come and join us on Monday and Tuesday Sept 26 and 27 for the two consecutive meetings, in which we will plan activities for the present semester. All are invited to attend. For further information contact Vincent at 485-9302.

Basic Skills Test — Will be given on Sat. Oct. 8 form 9 a.m. - 1 p.m. in Science 200A-B. All students presently enrolled who have not been tested.

Football-WPSC (98.5 FM) will air every game live with the exception of the Oct. 8 game at Wesley. WPC-TV will broadcast live all five home games on UA-Columbia Cablevision's Ch. 35 and Ch. 3 on campus.

Alpha Phi Delta — (National Fraternity) Fall Rush! Check out the largest fraternity in the tri state area. Mon. & Wed. Student Center 326/ Thurs. Student Center 332, 8 p.m. See why we're so proud! Stop by Alpha Phi Delta table in Student Center cafeteria.

Alpha Sigma Phi — (Fraternity) Sept. 27 & 28 at 7:30 p.m. Rush meeting. All interested males welcome. For further information call Jim Z. at 956-0782 or see Bill in G-149.

WPC Christian Fellowship — Oct 14 - 16, 1988 Bible and Life Weekend at Liebenzell Camp. Register by Oct. 3. For more information call Ken at 423-2737.

Phi Sigma Sigma — (National Sorority) Mon. 9/26 7 p.m. Rm 324 Student Center. Tues. 9/27 7 p.m. Wayne Hall Rm 216 C&D. Wed. 9/28 7 p.m. Wayne Hall Rm 216 C&D. Thurs. 9/29 8:30 p.m. Student Center Rm 324. For further information call 839-2934.

Academic Action

The questions and answers in this column are provided by the staff of the Advisement Center, located in Wayne Hall 138, phone number 595-2727.

1. I entered WPC in the Fall of 1987. How many credits do I need to graduate?

Students who entered WPC in the Fall of 1986 (Freshmen and Transfers) and afterwards need a minimum of 128 credits to graduate. Students who entered WPC prior to the Fall of 1986 need a minimum of 120 credits to graduate, as long as they have been in continuous attendance since then. Remember, this is a minimum requirement. Some majors require more than the minimum.

2. I have completed 60 credits and I need help choosing a major. What should I do?

If you haven't declared a major and have already earned 60 credits at WPC, you must then make an appointment to see an adviser to discuss probable majors. The Advisement Center has Faculty members from many different majors available to help. For further information or to be scheduled for an appointment, please call 595-2727.

3. What is a curriculum control sheet?

A curriculum control sheet is a list of all general education, major courses and electives needed to graduate in a particular major. They are helpful in evaluation and in keeping track of courses taken and grades received. Anyone who entered in the Fall of 1986 or after

must follow the new, revised curriculum sheets. The new and old sheets for each individual major are available in the Advisement Center in Wayne Hall, Room 138.

4. How do I know who my faculty adviser is?

Every student who enters WPC with a Major is assigned to an adviser in that Major. In a few weeks students will receive a letter from the Registrar regarding Spring '89 course selection. The advisor's name and office location will be included in that letter.

Students with immediate questions or problems should see the chairperson of the Major Department. The Advisement Center has a complete listing of chairpersons and office locations.

5. Do Basic Skills courses count toward graduation credit?

Basic Skills courses do not count toward graduation credit. So, if you need 128 credits to graduate, your Basic Skills courses will not be included in this amount.

6. How can a student go about changing his/her major and declaring a new one?

You may apply to change or declare your major after September 20th. Go to Raubinger Hall, Room 122, between the hours of 9:30 a.m. and 2:00-3:30 p.m. on Tuesday, Wednesday and Thursday. There you can pick up a Declaration/Change of Major form and receive further instructions. If you have any questions call 595-2349.

WORDPLAYS

Curtain up on today's WordPlay. Guess the word or expression portrayed below.

HOW FORTUNATE! TWO GUARDS OUT SICK, PLENTY OF SHEETS, AND A TAXI'S WAITING.



Cross through the letters "WP" when they appear together to reveal the answer.

WPLUWPCKWPY BWPREWPAK

Do you have a favorite word or expression you'd like the WordPlayers to perform? If so, send it to us today.

WPC Cable offers more Channels

BY AL VIZZONE
NEWS CONTRIBUTOR

WPC has increased the number of cable stations coming into the school from 12 channels to 36 channels this year, said Joe Schilp, WPC graduate assistant.

"One of the cable stations will carry the new WPC Cable Rock 98.5 radio," Schilp said. The F.M. station is targeted to be on the air on or around Nov. 1. The F.M. station manager will be John Kiernan, who also set up the new cable format. "In the past eight years John has turned the T.V. station from nothing to a 36 channel cable center,"



said Schilp. Kiernan is the head technician of the radio and T.V. departments.

The F.M. and the television cable will go to the Towers, but not the apartments, because money has not been authorized to run a main cable underground to the apartments, Schilp said. The cable was supposed to be run this summer, but

the wrong parts were ordered and the money was not allotted for the trunk line, which is the main underground line to the building, he said. WPC cable would like to offer pay television, such as HBO and Cinemax, but in order to do this, Schilp said the students must show interest.

"The advantages to having the cable F.M. is that you will be able to get all of the New York stations very clear and the WPC radio station," Schilp said.

The cable, which is similar to UA Columbia, will include Canadian stations Lifetime and USA via satellite, and three college programmed channels. National College T.V. on channel 3 airs 10 a.m. to 10 p.m. Schilp said the television department will also air live WPC home sports events, including men's and women's basketball and baseball. Students will be able to produce station identifications, commercials, public service announcements, and actual programs for channels 3 and 35, he said.

Schilp said cable splitters and cable are available from the Campus Cable Center in Hobart Hall. He said for \$5, students can have campus cable for the next four years.

'Mooners' convicted, sentenced

BY NOREEN BRAUN
NEWS EDITOR

Two of three men arrested in connection with campus incidents last October are serving sentences in Passaic County Jail after being found guilty, said WPC Campus Police Acting Chief Pete Ryerson.

Anthony McCaskill and Dexter Lovelace, both of Paterson, are serving sentences for their actions Oct. 27, 1987, in the Arcade and Wightman Gym. The two men and Emanuel T. Hannibal, who are not WPC students, tried to enter the Arcade Oct. 27, 1987. After the arcade attendant refused to let the three in, they "pulled down their pants and mooned her," and left, police reported. They then went to Wightman Gym, where another incident occurred.

Ryerson said Campus Police Officer Albert Clark drew composite sketches from witnesses' descriptions and the drawings were distributed on campus. WPC Detective Russ Stengel and Patrolman Thomas Yurkin investigated the case, he said.

On Nov. 6, Lovelace was



Acting WPC Police Chief Pete Ryerson

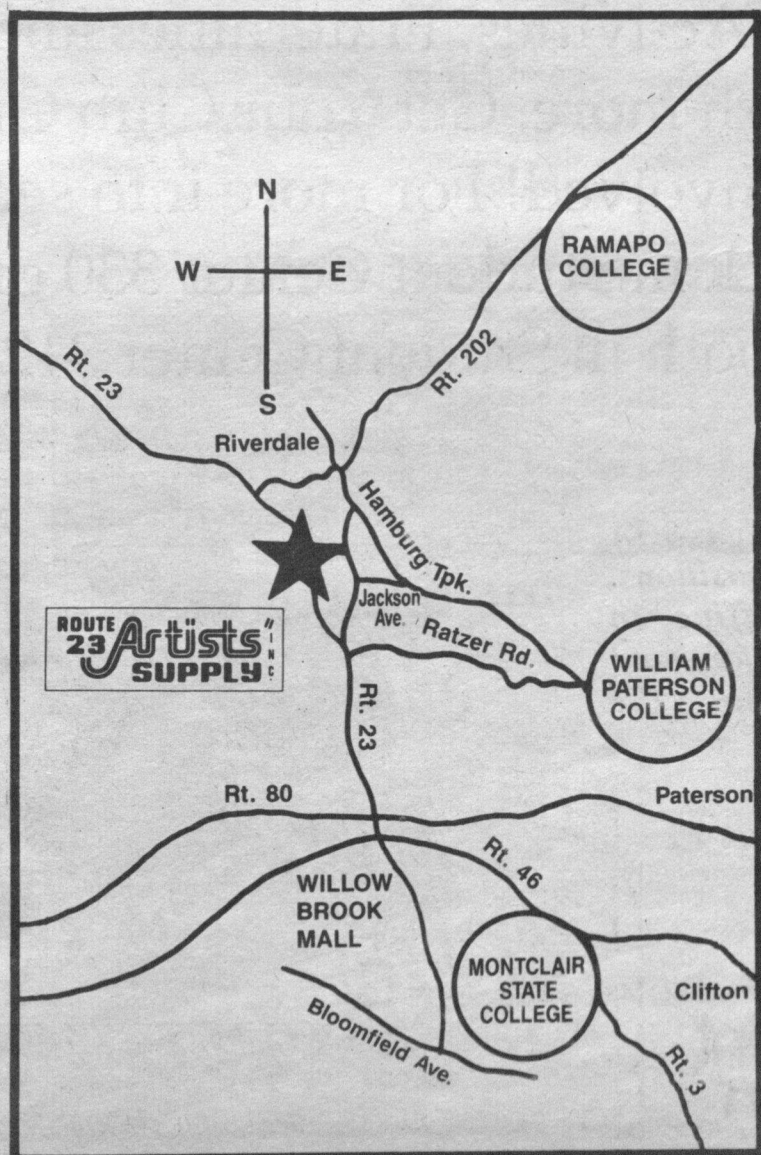
identified, arrested and charged by WPC Police with lewdness, harassment, trespassing and criminal mischief. McCaskill and Hannibal were apprehended on campus Nov. 23 after a student and a faculty member recognized them and contacted WPC police. McCaskill was charged with lewdness, harassment and volunteering false information. Hannibal was charged with harassment.

Ryerson said the arrests were made possible with cooperation from the Dean of Students' Office, Paterson Housing Authority and the Paterson Police Department.

At a preliminary hearing late last year, only Lovelace appeared and pled guilty to one charge.

On May 19, Lovelace pled guilty in a plea arrangement with the prosecutor and public defender, and was fined \$75 plus court costs, and sentenced for an undisclosed length of time to the county jail. McCaskill was sentenced Sept. 8 to nine months in the county jail. Hannibal is still at large but faces a charge of harassment.

Ryerson said this type of criminal activity is an unusual occurrence at WPC, and usually visitors and non-students behave themselves.



ROUTE 23 Artists' SUPPLY

721 ROUTE 23 POMPTON PLAINS, N.J. 07444
201-835-3337 A COMPLETE COMMERCIAL SERVICE & FINE ARTS CENTER

ART & DRAFT MATERIALS

20% DISCOUNT

FOR ALL STUDENTS WITH COLLEGE I.D. CARDS

PRESENTED AT TIME OF PURCHASE

SOME EXCEPTIONS

EVERYTHING
THE ARTIST &
DRAFTSMAN NEEDS
CONVENIENTLY
LOCATED

Hours:

Mon., Tues., Wed. 8am-6pm

Thurs. 8am-8pm

Fri. 8am-5pm

Sat. 10am-4pm



SGA

Presents...

**A SURE CURE FOR ALL
YOUR DISORDERS..**



CLUB FAIR

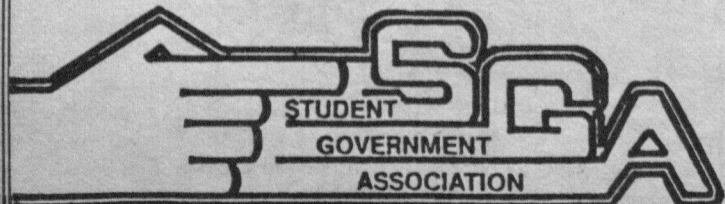
**September 28
From 10 a.m. to 4 p.m.**

**IT'S
WORTH
IT.**



Learn How To Get Involved In
SGA Clubs, Activities, Fraternities and
much much more. Get Your Club Or
Organization Involved! For more info see
John Andrejack in Student Center 330 or
Lauren Booth in Student Center 312.

*P.S. Please remember SGA
elections for open positions.
Come to SGA Office in
Student Center 330 for more
information about the
election.*



**Student
Government
Association**

New professor Obadele is politically active

BY WAFIA I. HOZIEN
ASSISTANT NEWS EDITOR

"I combine practical experience with academic knowledge and I believe that benefits the students," said Dr. Imari Obadele, new assistant professor in the Political Science Department. Last year Obadele, who has a Ph.D. in Political Science from Temple University, was a visiting professor at the College of Woost-

er in Wooster, Ohio, 50 miles south of Cleveland.

He is presently doing a study of the racial values in textbooks used in public schools in the Washington, D.C., area. The study is about how Indians and New Africans are treated in these textbooks, Obadele said.

"In my free time I devote a great deal of my time to the Independence of New Africa," Obadele said. This is the

name given to the oppressed black nation of North Americans, Obadele said. In 1968, he was part of an independence convention in Detroit where, as part of People in the The Provisional Government-Republic of New Africa, he proposed to create an Independent Republic of New Africa, which would encompass five states in the Deep South of the United States: Mississippi, Louisiana, Georgia, Alabama and South Carolina.

He said that the group does most of its work in the western part of Mississippi, near Jackson, the capital. "We would like to organize an independent plebiscite, that is a vote of the people to remain part of the United States or be independent," he said. "And by doing this we had to do various studies, like what is a state? What is Independence? We had to study both national as well as international law," Obadele said.

"I'll probably teach for five years here and later at the Pan-African University in Mississippi or Illinois," Obadele said. "I'll probably teach there or help out."

His outside interests include making and producing movies and helping musicians.

"I have a book in the bookstore that is available to students," Obadele said. "It is

called **Free and Land**. It is a study of the independence movement of Mississippi during the '70s and it is written in novel style." His other book, **America the Nation**, will also be available in the bookstore soon, he said.

Obadele is presently teaching American Presidency, Political Parties and American Government courses at WPC and can be reached at Science room 344, extension 3432.

Students get special Lecturer Series rates

Special rates and reserved seating for the Distinguished Lecturer Series, which this year includes speakers Howard Baker, White House chief of staff, and Sally Ride, who orbited earth in the Challenger space shuttle, have been established to make the lectures more accessible to students, said Dennis Santillo, director of college relations.

"We have made the purchase prices for tickets very reasonable [for students]," Santillo said. Ticket prices are \$20 for all five lectures or \$5 per lecture, "way below the cost for senior citizens," he said. The normal subscription rate is \$40.

Santillo said students are encouraged to attend the lectures because of their educational value. To promote student interest this year, he said brochures describing the lecturers were mailed to students.

For each lecture Santillo said 100 seats have been reserved for students, adding, "we could easily sell those in [normal] subscriptions immediately." Because of the limited number of seats, he said students should purchase their tickets as soon as possible. Tickets for each lecture go on sale two weeks before the lecture, and Santillo said all student seats remaining after the third day of ticket sales become available to the general public.

For students who cannot afford the lectures, Santillo said usher positions are open. "We only have a limited number [of positions]," he said. "By the end of (this) week we hope to have 14 ushers." Training sessions will be held for ushers, who are required to dress appropriately. Students interested in being ushers should contact Dolores Droumbakis at 595-2110.

marshalls

EMPLOYMENT OPPORTUNITIES

Flexible Schedules Available

Full and Part Time

*Cashiers *Stock Clerks
*Merchandise Clerks

Enjoy our benefits:

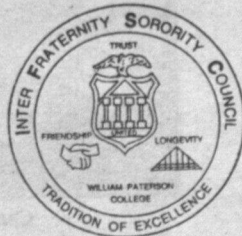
- Tuition reimbursement
 - Paid sick time
 - 10 paid holidays - bonuses
 - 15% employee discount
- Willing to pay for experience**

Apply at the Wayne location

EOE - M/F

INTER FRATERNITY SORORITY COUNCIL

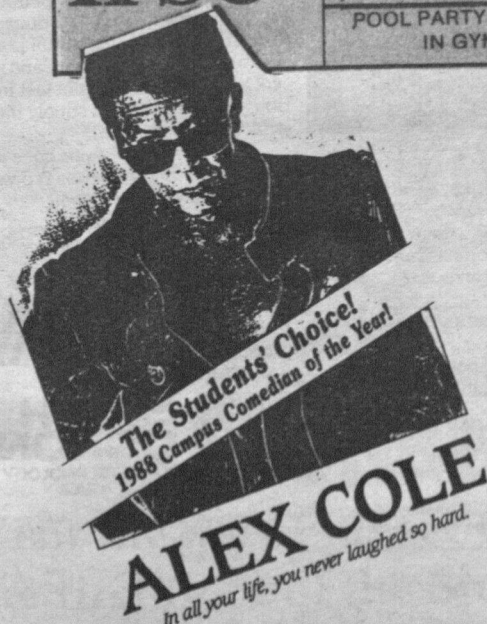
GET INVOLVED!!!



GO GREEK!

GREEK WEEK AT WILLIAM PATERSON COLLEGE

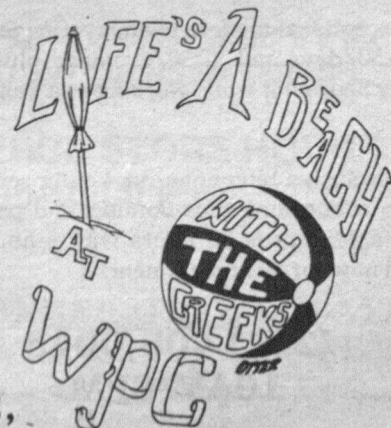
SEPTEMBER	MONDAY 19	TUESDAY 20	WEDNESDAY 21	THURSDAY 22	FRIDAY 23
IFSC	ALL GREEK PICNIC 11:00 - 2:00 FRONT OF STUDENT CENTER	LIP SYNC CONTEST 8:00 - 12:00 SC BALLROOM	ALEX COLE SC BALLROOM 8:00 PM	GREEK OLYMPICS 1-4 PM	MOVIE NIGHT "BILOXI BLUES" 8:00 PM SC BALLROOM
	POOL PARTY 8-10 PM IN GYM				



CONTINUE

THE

TRADITION



FOR MORE INFO, STOP BY THE IFSC OFFICE,
ROOM 314 IN THE STUDENT CENTER.

IFSC SGA FUNDED STUDENT ORGANIZATION

RUSH WEEK AT WILLIAM PATERSON COLLEGE

SEPTEMBER	MONDAY 26	TUESDAY 27	WEDNESDAY 28	THURSDAY 29	FRIDAY 30
-----------	-----------	------------	--------------	-------------	-----------

Health classes focus on AIDS

AIDS from page 1

the training efforts of the committee while others did not. People trained include Student Services and Residence Life staffs, the resident assistants, some people from the athletic department, and the few students that were on the original task force in the summer of 1987.

"We really didn't prioritize faculty to begin with," Dr. Blonna continued, "because we felt that the faculty who would normally be exposed to the body fluids [would] already be intimately familiar with this. This would be old information to them."

The committee last year conducted extensive training programs and awareness events. "What I find intriguing is that last year's programs were so well publicized yet not many students attended," said Kathleen Connolly, assistant professor of nursing and the committee's representative from the Department of Nursing. "We are dealing with an age group that considers themselves, in many ways, invulnerable."

Dr. Blonna said the programs were held at various times throughout the week, with some early evening and lunchtime programs, to enable students to attend. He said

multiple copies of audiovisual materials are available and literature provided by the state will soon be distributed on campus.

"We have an agreement in the Health Science Department that AIDS will be a focal point in all the Current Health Issues classes," Dr. Blonna said. "This semester alone, [AIDS awareness] will reach about 800 students. It is also an issue in the nursing classes." He added that AIDS is the central disease focus of all the classes he teaches.

"One thing that has to be clear," Dr. Blonna said, "is that when we're talking about AIDS, it is really the end point in the continuing HIV infection. For (those) exposed and...infected with Human Immunodeficiency Virus (HIV), the large majority...will know if they're positive within three months [of taking the test]. Ninety percent of all people who have been exposed to HIV will develop antibodies and test positive in three months. AIDS is the endpoint of the symptomatic, clinical disease. [But] a person can be infected with the [HIV] virus for several years before developing AIDS."

The concern shown by the committee is consistent with the goals stated in the all-encompassing statement of position reprinted for all students to read in the

student handbook. The committee wanted to stress that its goal of increasing coping skills and providing emotional support was just as important as trying to reduce high risk behavior. The committee wants students to make contact with them for many reasons, they said.

A hotline had been established in the past so that students could call in and ask questions or get information. Further information about the hotline can be acquired from Ann Yusaitis, the committee's representative from the Counseling Center. Yusaitis is the committee member designated to maintain a confidential line that students

can use to discuss any concerns they may have about AIDS, ARC, or HIV.

Another committee member, Roland Watts, director of residence life, is responsible for answering the specific concerns parents may have and explaining as sensitively and clearly as possible the guidelines and policies of WPC.

Perhaps the most important member of the committee will be Dr. M. Neilan, the campus physician. His role will be to constantly update the committee's information about AIDS so that WPC is always disseminating the most current available medical facts.

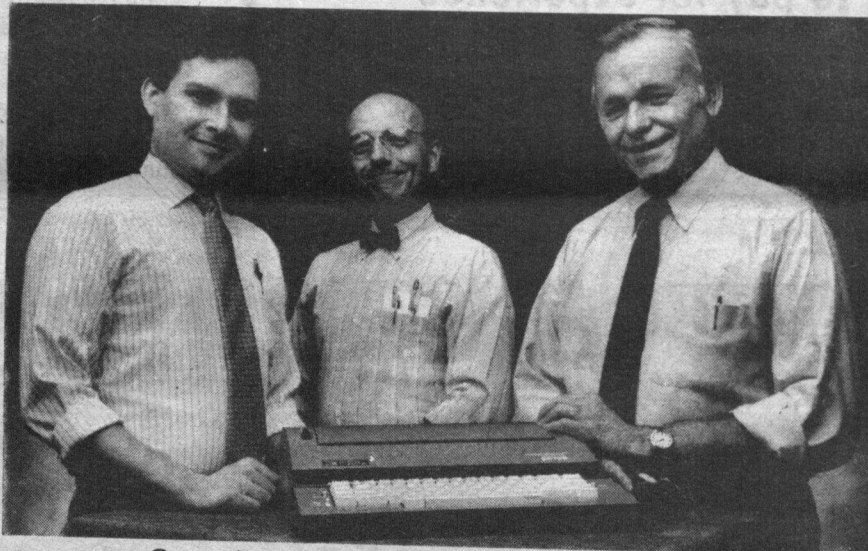
McMichael to speak on Bulimia, Anorexia

Residence Life will sponsor a seminar on "Anorexia Nervosa, Bulimia, and Compulsive Overeating" Sept. 28 at 8 p.m. in the Towers Pavilion.

Rodney McMichael, executive director for the Treatment of Eating Disorders in Livingston, will be the guest speaker for the seminar.

For further information, call Kathleen Kemper at 595-2811.

At Smith Corona, simplicity is the mother of invention.



Our engineers racked their brains so you won't have to.

We started out with a very simple idea.

To make electronic typewriters and word processors that have lots of great features but are very simple to use.

So simple you don't have to keep one eye on your typing and one eye on the instruction manual.

So simple you don't need a degree in computer programming to operate them.

So simple they can even make a confirmed non-typist comfortable at the keyboard.

Call it human engineering if you like. Or call it ergonomics. Or call it plain old inspiration.

What we came up with is a line of remarkable typewriters that are sophisticated without being complicated.

In fact, they're unlike any other typewriters you've ever seen before... or used before... or muttered at before.

Take our new Smith Corona SD 700. (Lots of people are going to.)

We call the SD 700 the Memory Typewriter. You just may call it the simplest typewriter in memory.

It features a 7000 character editable memory you can access with the mere flip of a switch.

Combined with the 16 character LCD display, you can proofread, correct and make changes before you ever put anything down on paper.

Of course, should you want to



We've reformed the correction system.

Add features like a Spell-Right™ 50,000 word electronic dictionary, WordFind, WordEraser, Full Line Correction and much more and you've got a typewriter that's not just incredibly simple to use, but simply impossible to pass up.

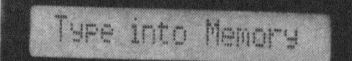
Of course, the same goes for every other Smith Corona typewriter and word processor as well.

Which is why we recommend that you hurry to your nearest store and try our machines yourself.

Obviously, they won't come to you. Yet.



SMITH CORONA
TOMORROW'S TECHNOLOGY
AT YOUR TOUCH



Give your typing a screen test.

make changes on paper, we've made that simpler than ever too.

On the SD 700, as well as on every new Smith Corona typewriter, you'll find our new correcting cassette.

It's easy-to-load and you can insert it in seconds.

There are no spools to unwind. No complicated threading. No tangles.

So now correcting mistakes is as easy as making them.

For more information on this product, write to Smith Corona Corporation, 65 Locust Avenue, New Canaan, CT 06840 or Smith Corona (Canada Ltd.), 440 Tapscott Road, Scarborough, Ontario, Canada M1B 1Y4.

Part Time
Telemarketers

**TELEPHONE
MARKETING
RESOURCES**

**Earn extra holiday money.
Act Now!!**

TMR is an exceptional modern telemarketing facility where you can earn \$6.50/days and \$7.50/evenings plus incentives, for your Holiday Shopping while working as a Telemarketing Sales Reps.

We are the exclusive telephone marketing reps for HBO and Cinemax. No cold calling plus Bonuses and pay increases and paid time off. Minimum 20 hours with 5-hour shifts-day or evening. Call now for an appointment.

**(201) 405-0045
10AM-6PM**

TMR

**169 Ramapo Valley Road
Oakland, NJ 07436**
Equal Opportunity Employer

Women's Studies lectures planned

The Women's Studies program is continuing its series of programs of timely interest to women with three lecture-discussions planned for the fall 1988 semester.

Anita Barrow, professor of anthropology, will deliver "An Anthropologist Looks at Women's Changing Roles" on Tuesday, Oct. 4, 12:30-1:45 p.m. in Student Center rooms 203-5. Barrow will demonstrate how a cross-cultural perspective helps people better understand the roles of women and men in our society.

"Women's Stake in the

Presidential Election" will be discussed by Carole Sheffield and Lois Wolf, professors of political science. The lecture will be held Tuesday, Nov. 1, from 12:30-1:45 p.m. in Student Center room 213. They will analyze what presidential candidates George Bush and Michael Dukakis promise women, and the "gender gap" of the Reagan administration.

Paula Rothenberg, professor of Women's Studies and Philosophy, will discuss "Sexual Harassment" Tuesday, Dec. 6. Chairperson of

the WPC Sexual Harassment Panel, she will define sexual harassment and give suggestions about how to combat it. The discussion will be held in Student Center rooms 324-5, from 12:30-1:45 p.m.

Faculty are strongly encouraged to bring their classes to these events. All discussions are free and open to the public. For further information, contact Susan Radner at 595-3070.

Office space limited

SENATE from page 1

chairperson, said a graduate office will be established on campus and will have a qualified administrator and secretary.

Pollack said there is a lack of adequate office space for adjuncts and temporary full-time faculty, while retired professors have been given office space. Wolf said it is the responsibility of the department chairpersons to solve office space problems.

The senate will meet Sept. 27 in the Student Center to hear Peter Spiridon, vice president for administration and finance, speak about upcoming campus reconstruction.

Alumni scholarship applicants sought

The Alumni Association is now accepting applications for the 1988-89 Alumni Association grants.

The grants will go to WPC organizations, groups, students, faculty members, administrators and alumni for projects, events or items directly benefiting the college, not an individual. Some examples of projects from past years are \$200 to the

Equestrian Club for a trophy, \$320 to the Catholic Campus Ministry for films, \$1,000 for a directory in the library, \$1,500 to Athletics for a scoreboard, and \$2,000 to Ben Shahn Galleries for a display.

Deadline for applications is Oct. 7. Application forms and guidelines are available in the Alumni Office, Hobart Manor, room 207. For more information call 595-2175.

Nominations open for class officers

CJB from page 1

summer sessions to make up the missing credits, or are waiting for transfer credits.

On May 18, Morris sent letters to the elected officers that said, "...by September 1, 1988, you must be a member of the class you have been elected to represent," and listed the required credits: freshman, zero to 23; sophomore, 24-57; junior, 58-89; and senior, 90 or more.

"At the end of May, beginning of June, I noticed there could be potential problems," Morris said. On June 14, he sent another letter "warning" the students.

"There has to be a sense

of responsibility that to run for a... class office, you must have enough credits," Morris said. "It is the student's responsibility to find out if they're eligible for what they're running for."

For the senior class officer positions, Morris said the word "graduating" is "an important qualifier." He said, "Someone could be here five years and still be a sophomore. A person could be a senior class president for three years."

CJB said nominations for the vacant offices will be accepted now until Sept. 22 in the SGA office, Student Center 330.

IFSC Record available

The New Student Record for freshmen, sponsored by the Inter-Fraternity Sorority Council, is available Monday through Friday, 9 a.m. to 4 p.m. in the Student Development Office, Student Center room 315.

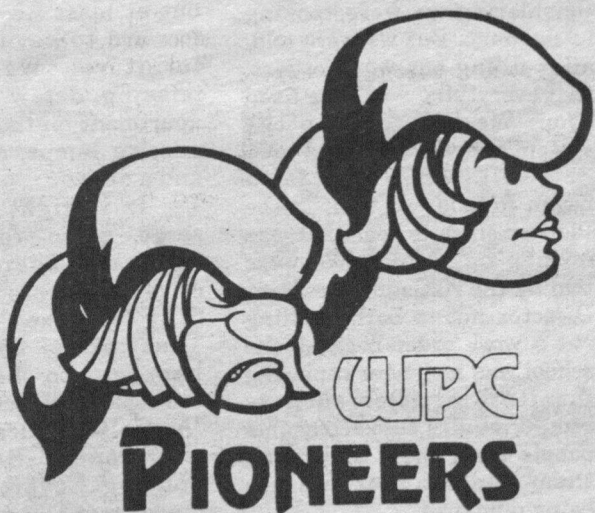
Got a message for someone special?

Put it in The Beacon personals for just \$1.

Introducing...

Pioneer Gear

Your new source for WPC imprinted apparel, WPC memorabilia & souvenirs.



Visit the new Pioneer Gear shop on the first floor of the Student Center.

Monday-Friday 10:00 a.m.-4:00 p.m.
Monday-Thursday 6:00-8:00 p.m.

WPC BOOKSTORE

REGULAR HOURS

MONDAY-THURSDAY 8:30 A.M.-8:00 P.M.
FRIDAY 8:30 A.M.-4:30 P.M.
SATURDAY 10:00 A.M.-1:00 P.M.

BUYBACK HOURS

MONDAY-FRIDAY 9:30-11:00 A.M.
MONDAY-FRIDAY 2:00-3:30 P.M.
MONDAY-THURSDAY 5:00-7:30 P.M.

ALL REFUNDS MUST BE ACCOMPANIED BY A RECEIPT
25% DISCOUNT ON USED TEXTS

CONVENIENCE STORE HOURS
8:00-10:00 P.M.

COME VISIT PIONEER GEAR LOCATED IN
THE LOBBY OF THE STUDENT CENTER

SCHOOL SUPPLIES

REFERENCE BOOKS

IMPRINTED ITEMS

ICE CREAM

USE YOUR CHARGE:
VISA
MASTER CARD
AMERICAN EXPRESS

Senior class officers: student's responsibility?

Concerning the recent class officer vacancies in the Junior and Senior classes there are a few interesting observations to make.

One of the responsibilities of Student Development is to assist the SGA and their clubs in areas where needed. Director of Student Development, Henry Morris said, "It's our job to get out and show the benefits of (SGA)." Elections to positions, such as class offices, play a key role to the future success of those positions.

A unique problem arose when several "seniors" and "juniors" who won their election for their respective class office did not qualify because of lack of credits. We were informed by Morris that credits of candidates are normally checked after elections. In at least one instance, a legitimate student who ran to represent his/her class was defeated by another student who did not qualify for that class. Is this fair? This happened because nobody checked out the candidates prior to elections.

What effect will this have on students? One of the biggest events of the year is the Senior Dinner Dance and this one night takes many months of planning. The time to start planning is now but there's no one in position to make those decisions because the candidates voted in are ineligible.

Morris said, "It is the student's responsibility to find out if they're eligible for what they're running for." But because some student's are waiting for transfer credits to be evaluated and/or are waiting for pre-session and summer course grades, they may not realize where they stand. If credits are such an important factor (which they should be) students who run for class office should be approved before they start campaigning. This would save a lot of work for a lot of people. Now the process has to start all over again.

This situation was avoidable but the blame shouldn't be placed entirely on Student Development. The lack of qualified students to run for these positions reflects poorly on those classes which are lacking officers.

Letters to the Editor

Parking problem ridiculous

Editor, The Beacon:

As everyone is aware, the parking problem here at WPC is ridiculous; and it has been this way since I arrived here in the Summer of '85. Since then I have heard and read about the parking situation. There are a lot of people with plenty of ideas (some have been shared) on how to solve this problem, but these ideas just involve the administration to come up with the best solutions and act on them. I feel we, the students of WPC also have to be fully involved in solving this problem that has affected our school for a long time. Once we begin being involved then, the administration will see that we are at least making an attempt to solve the parking problem and assist us, so it doesn't drag on any longer.

How? There are a lot of people who share their ideas but don't give any ways to put these ideas into action. Therefore here are just a few ideas in which the student body of WPC can assist.

For every Com-muter

and Resident, ask yourself if you really need a car to arrive here at WPC. By this I mean is there any other person who you could drive up with, you know, car-pool. Even if you must develop a schedule on whose car will be used on a particular day. This alone will mean one less car on campus. And if everyone puts this suggestion into action that will be a lot of other cars that will be off campus. Yes, there are always reasons on why one might bring his or her car on campus. Just ask yourself one question, is my reason or reasons justifiable reasons?

For those individuals who failed the parking section of the Driver's License Road Test, here are just a few of those rules just for you. White lines are called the dividers. Drivers are to park between the two lines. NOT ON TOP OF THEM. That includes the left or right side of the car being right on top of one white line. Those individuals who have the need to occupy two spaces (who knows why) could be a little unselfish and use one space, so someone else can

occupy the other space or just leave your car at home.

These are just some possible solutions to the problem. There are probably other students who have their own ideas on possible solutions where students are to take action, not just the administration. Then share them with us. Once we, the student body, begin showing the administration that we care enough to help solve the problem, then maybe the next time we suggest something about solving this and other problems, they will put a little more thought before their decision is publically announced.

Also, the next time you complain about the parking problem, ask yourself this one question: What have I done to solve the problem? If the answer is nothing, maybe you should blame yourself. If the answer is "I tried" then maybe you need to try again. Only when we the students really unite to solve this problem will this problem be half gone.

Luis Rosa
senior/psychology



Apartments less than adequate

Editor, The Beacon:

We hate to start the year off with a complaint, but it seems we have no choice. Once again, Residence Life has brightened our lives with new regulations that we were not previously informed of. This time it has nothing to do with visitor policies, alcohol policies or quiet hours. Our complaint is about something as simple as furniture.

When we moved in, our apartment had a few things that were broken and a few things missing. Two of the missing articles included the fire extinguisher and the overhead kitchen light. Broken articles included the light over the stove and a floor lamp. Needless to say, it was slightly dark in our apartment. All of the apartments were missing garbage cans. If we wanted one, we had to sort through dirty ones piled by the dumpster. The fire extinguisher was replaced

after about a week. Thank God there wasn't a fire, considering we were cooking in the dark. But we were told, after filling out work orders, that everything would be fixed soon. We had faith in the system and waited.

Well, when our faith began to fade, we went to the Pioneer office to see what was holding up repairs. We were told by the Assistant Resident Director not to bother filling out a work order because the school was no longer replacing furniture articles such as lamps, chairs, etc. It seems people steal them and break them and for that, we are being punished.

Are we or are we not paying for a furnished apartment? Is it fair for us to suffer for the wrongdoings of past residents and summer convention residents? It is horrible enough to move into a filthy apartment every September (ours by the way,

came decorated with dirty men's underwear on the floor), but at least we usually look forward to having all of the furniture. We are only missing a few things. An apartment on the first floor is missing lamps, chairs, cubes and a desk.

Is it right to pay the same price for a semi-furnished apartment that other people are paying for a fully furnished apartment? That price by the way, happens to be \$1200 a semester. The school's logo is "A quality education within your reach." So why does housing overcharge for inadequate accommodations?

So until we can afford to buy ourselves an overhead kitchen lamp, WPC will keep us in the dark.

Judy Coles
Brenda Weitz
Julie Conroy
Lori Steinel
the residents of H508

The Beacon

Editor-in-Chief
News Editor
Arts Editor
Campus Style Editor
Copy Editor
Sports Editor
Assistant News Editor
Design Director
Production Manager
Business Manager
Editorial Adviser
Business Adviser

Todd A. Dawson
Noreen E. Braun
Lisa S. Musawwir
Pamela Giovannucci
Valerie McHugh
Craig Haley
Wafa I. Hozien
Toni Lisa Peters
Michele Resotko
Jacquelyn Cassidy
Herb Jackson
Rich McGuire

The Beacon of William Paterson College is published by the students of William Paterson College of Wayne, New Jersey 07470, with editorial, production and business offices in room 310 of the Student Center. Newspaper content represents the judgment of The Beacon staff in accordance with The Beacon Constitution and does not necessarily represent the judgment of the Student Government Association, the administration, faculty or the state of New Jersey. Opinions in signed columns and letters to the Editor are not necessarily the opinions of the staff. This paper is independently funded and run by student editors who receive no monetary reimbursement.

Study abroad a worthwhile experience

Editor, The Beacon:

As a recent graduate of WPC, I reflect upon my college career as a tremendously positive experience, both intellectually and socially. I was involved in many extra-curricular activities: WPSC Radio, The Beacon, WPC-TV, Helpline, Track, SGA, National Student Exchange, as well as various seminars, workshops and lectures. All of the aforementioned were fun, educational, and contributed to my personal growth.

If however, I were to pick out my single greatest learning experience of my college career, it would be none of the above. Without hesitation, the single greatest learning ex-

perience of my college years was the semester I spent in England, as part of the school's Collegiate International Education (CIE) Program.

The chance to *live* in another society is what makes the learning experience so broad and grand. Unlike vacations (which are great too), actually living in another country enables one to experience another way of life. It was fascinating to learn about another society, and because I was living what I learned it was very relevant. Everything aroused my curiosity, from their standard of living, social and political outlooks, to how their geographical position affects their perception on

world events, right on down to the plethora of nuances in everyday life.

If I've piqued your curiosity, and you'd like to find out more about it, contact Professor Gunvor Satra. Her office is located in Matelson Hall, Room 317. She will be delighted to provide you with all of the necessary information. In addition, she has vast experience in the international education program, and is very adept at answering a wide range of questions. An added bonus-Professor Satra always has a friendly and cordial attitude toward the people she deals with.

Here are a few parting words of advice based on my own experience...There are a

few things you will need; maturity, an open mind (curiosity would be a big help too), money, and at least a 2.5 grade point average.

It is perfectly normal to be apprehensive, nervous, and a bit scared about taking this quantum leap. How then do you determine whether you're really ready to take the chance? Well, there is no clear cut formula but I offer you this advice...Don't let someone else tell you whether or not you're ready, because it is a very personal decision and no one else knows you as well as you know yourself. It works both ways, too. Don't be goaded into this by other people, because if you have to be persuaded to go, then

clearly you're not ready. On the other hand, if you really think you are ready, don't let others talk you out of this experience.

Finally, my worst semester at WPC was my first one back after being away. Even though I liked the courses I had, there was a real letdown because the world around me was so trite in comparison to the year before.

Applications for the spring semester should be in Professor Satra's office by October 17th. Her office hours are Tuesday 1:30-2:30 p.m. and Thursday 8:30-9:15 a.m.

*Bruce I. Konviser
graduate/communications*

Students parking view

Editor, The Beacon:

You have a lot of nerve to assume that I spent last year on the SGA, backed Parking Committee and did not accomplish anything significant. The Parking Committee met faithfully with its members. We discussed alternatives to the parking problem. After many hours of inter-group decisions we created several proposals and presented them to the SGA. The Parking Committee felt very strong about these possible solutions.

The decision to shoot down our solutions was based upon an SGA vote. Therefore,

I feel you should never have insulted our work, you passed comments about the committee as if we were recognized as being important yet did absolutely nothing at all. I was appalled at reading your remarks. I cannot believe a reporter did not get the facts straight before going public. Granted this insulting opinion is probably not favored by all. Caution should have been exercised so as not to downgrade the achievements that did take place by this committee.

*Michele Corsaro
psychology*

Dirty move-in conditions for students

Editor, The Beacon:

I am writing in regard to campus living facilities. When I moved into my apartment, my excitement of finally being "up there" soon turned to feelings of dismay and disgust. In my new home which I share with three others, for the price of \$1200 per semester, I found dirty socks, old cakes of used soap, and used and dirty cooking utensils left over from former residents. Obviously the extravagant amount of money that I pay the school

does not cover cleaning costs between residents. I could complain about the ugly green of the walls, or the rundown condition of the wall-to-wall carpeting, but somehow the mold clinging to the ceiling, or the smell of dry rot I encountered on "Moving In Day" somehow outweighed the color scheme.

The final straw was when the rain woke me up at 3 a.m. Tuesday. I know the school is not responsible for the weather, but it must be able to do *something* about the fact that my bedroom ceiling

was dripping from the rain, causing flash floods along my bedroom floor. Doesn't the price we pay for housing include a dry roof over our heads?

I know it sounds hard to imagine such unlivable conditions, but not only do we have to live this nightmare, but we are paying money for it as well.

*Karen McKay
Chris Dittman
Jackie Fino
Joan Matuszek
Residents of H606*

The Beacon needs you to fill the following positions:

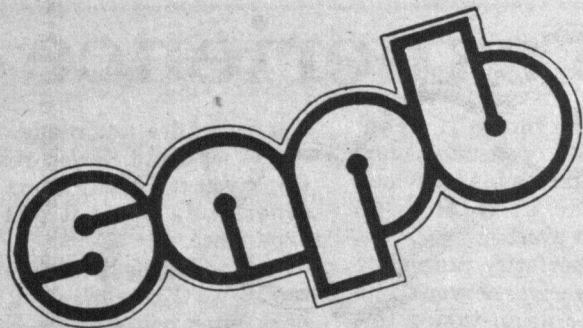
Photo Editor

Advertising Manager and Advertising Representatives

and contributors to all sections

No experience is necessary. We will train you.

Call 595-2248 or come to Student Center 310
Tuesday-Friday afternoons



STUDENT ACTIVITIES

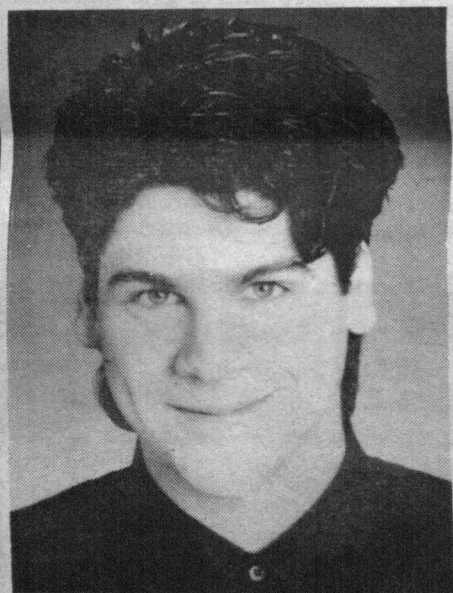
"THE ULTIMA

FALL SEMES

GREENE
The Color of Magic!
Way Too Much Fun!

An Expert Crowd Pleaser!

Charles Greene III, Magician of the Year



September 2: Friday-Movie: *Top Gun*
8 p.m. Science 200A — CINEMA
September 6: Tuesday-Yankees vs. Cleveland
5:30 p.m. Lot #5 — TRAVEL

WELCOME BACK WEEK 9/11-9/15

September 13: Tuesday-Volleyball
Noon, Student Center Mall — ENTERTAINMENT
September 14: Wednesday-Comedy Show: "Gary DeLena"
Noon, Billy Pat's Pub — DAYTIME
September 15: Thursday-Turtle Races
8 p.m., Student Center Ballroom — ENTERTAINMENT

September 21: Wednesday-Comedy: "Alex Cole"
8 p.m. Student Center Ballroom — ENTERTAINMENT/IFSC
September 27: Tuesday-Laugh Off
12:30 p.m. Billy Pat's Pub — DAYTIME
September 29: Thursday-Dance
8 p.m. Student Center Ballroom — MINORITY PROGRAMS
September 30: Friday-Montreal
Sept. 30-Oct. 2 — TRAVEL
October 7: Friday-Lecture: "Sally Ride"
Rec Center — LECTURE
October 12: Wednesday-Laugh Off
12:30 p.m. Billy Pat's Pub - DAYTIME

HOMECOMING 10/17-10/22

October 17: Monday-Two Bands
Student Center — ENTERTAINMENT/CONCERTS
Monday-Charactures
11 a.m. Student Center — ENTERTAINMENT
October 18: Tuesday-Novelist
Student Center — FESTIVALS
Tuesday-Movie: *Fatal Attraction*
8:30 p.m. Science 200A — CINEMA
October 19: Wednesday-Lecture: "Marla Hanson"
12:30 p.m. Student Center Ballroom — LECTURE
October 20: Thursday-Chronicles/Horoscopes/Buttons
11 a.m. Student Center — FESTIVALS
Thursday-Float Building
6 p.m. Lot #6 — FESTIVALS



ALEX
In all your life, you

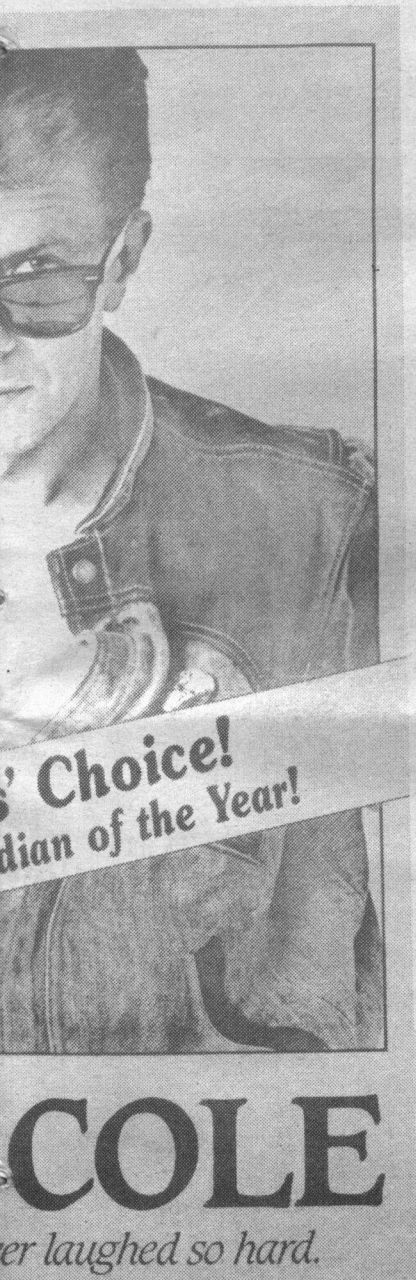


The Student Activities Programming Board is a programming organization of William Paterson University that serves the entire campus community unlimited. Members are dedicated to the college and provide activities to the students. Activities include dances/parties, comedy, educational workshops. The SAPB is composed of nine committees and committee members. The chairperson coordinates meetings, coordinating committee activities with other WPC organizations, community groups. The Student Activities Programming Board works closely with the entire College Community. SAPB is located on the third floor of the Student Center. 595-3259.

PROGRAMMING BOARD

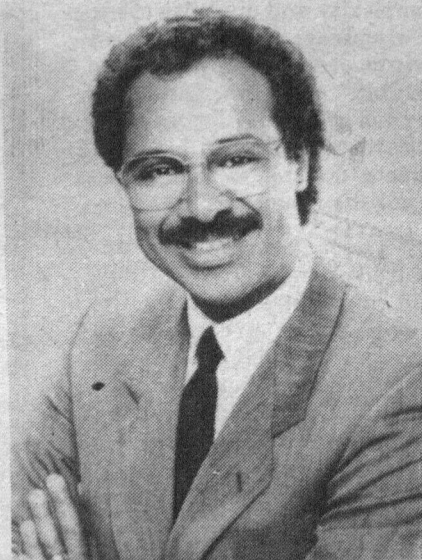
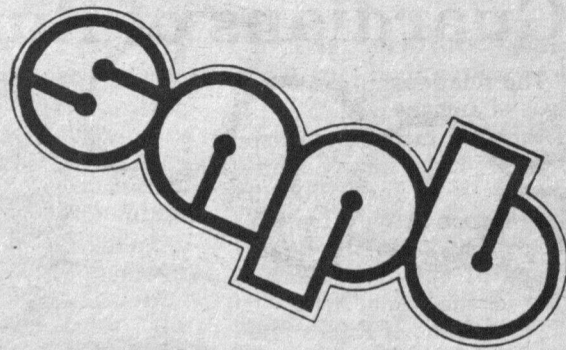
THE RECESS"

TER 1988

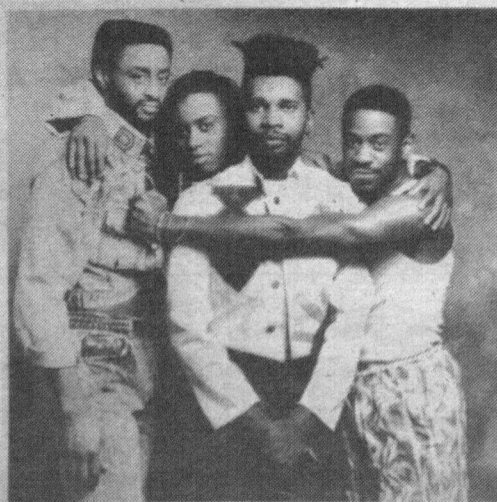


October 21: Friday-Football: WPC vs. Ramapo
8 p.m. Kickoff
Friday-Parade
Football game halftime — FESTIVALS
Friday-Movie: *Biloxi Blues*
8:30 p.m. Science 200A — CINEMA
October 22: Saturday-Comedy: Marc Price "Skippy"
8 p.m. Rec Center — CONCERTS
October 26: Wednesday-John Bundie Illusion
October 27: Thursday-Halloween Party
ENTERTAINMENT
November 4: Friday-Movie: *Sign of the Times*
8:30 p.m. Science 200A — CINEMA
November 10: Thursday-Puerto Rican Food Festival
12:30 p.m. — MINORITY PROGRAMS
November 11: Friday-Lecture: John Tower
Rec Center — LECTURE
November 15: Tuesday-"Flip" Magic Show
12:30 p.m. Billy Pat's Pub — DAYTIME
November 16: Wednesday-Puerto Rican Dancerts
12:30 p.m. — MINORITY PROGRAMS
November 17: Thursday-Lecuter: Spencer Christen
12:30 p.m. Student Center Ballroom — LECTURE
November 30: Wednesday-Comedy: Wayne Federmen
12:30 Billy Pat's Pub — DAYTIME
December 1: Thursday-Black History Logo Contest
MINORITY PROGRAMS
December 5: Monday-Trip: Rockefeller Tree Lighting
TRAVEL
December 13: Tuesday-Christmas Movie Festival
8:30 p.m. Science 200A — CINEMA
December 14: Wednesday-Santa Photos
12:30 p.m. Student Center — ENTERTAINMENT

**ALL SAPB PROGRAMS ARE TENTATIVE
AND SUBJECT TO CHANGE. FOR
FURTHER INFORMATION CONTACT SAPB
AT 595-3259.**



better known as SAPB, is the major
College. Our goal is to offer to the
ng and entertainment opportunities.
ork hard to present a wide variety of
ch as concerts, movies, lectures,
and Springfest to name a few.
ach comprised of a student chairperson
s responsible for leading committee
udgeting, and working in conjunction
ps and administration.
for everyone who enjoys working for
S FOR YOU! Come visit us. Our office is
er, room 303, or call us at 595-3261 or



SGA FUNDED ORGANIZATION

"Guardians of Runes and Ruines"

The relationship between images of ancient civilizations and those of modern culture will be explored in the opening exhibit of the 1988-89 gallery season at WPC tonight through Oct. 28 in the Court Gallery of the Ben Shahn Center for the Visual Arts.

"Guardians of Runes and Ruines," is a one-person show of sculpture, monoprints and drawings by Michael Burke. An opening reception will be held this Thursday from 5-6:30 p.m. Gallery hours are Monday-Friday, 9 a.m. to 5 p.m. Admission is free.

Burke, a resident of New York City and the Sussex County town of Andover, will display a selection of his large-scale aluminum sculptures-etched flat metal sheets which are often shaped to suggest a human form. The etched designs feature images from ancient ruins, cave paintings, petroglyphs and stone tablets, as well as formulas and geometric forms commonly used in modern science and architecture. Burke will also exhibit several black and white drawings, and monoprints rubbed from the surfaces of his sculptures.

Describing his work, Burke explains that he strives to convey "an appreciation of the level of scientific sophistication that was attained by our ancestors thousands of years ago." He cites an example the Druid monuments that pinpoint eclipses and the 50-mile straight "roads" constructed by the Anasazi Indians of the American Southwest. "As long as we label these ancients as 'uncivilized' we are able, with no further questioning, to assume we are ultimately civilized. If, however, we can respect the important contributions of peoples whose societies have ended," he theorizes, "we might be forced to find means to assure that we do not also make ours an extinct civilization."

Nancy Einreinhofer, director of the Ben Shahn Galleries, says she is pleased to host Burke's artwork. "The complexity and diversity of his sculptures, drawings and prints deserve a one-person exhibit," she says. "And, the mythological and literary implications present in his work adds a dimension that transcends the visual arts."

His artworks have appeared in numerous gallery and museum exhibits in the metropolitan areas and in Europe. Several of Burke's sculptures have been installed in public spaces, including "Celestial Theodolyte," a reflecting disc currently on view in Flushing Meadow park in Queens.

This is the first time that a one-person show has been held in Ben Shahn's Court Gallery, a large, open courtyard space naturally lit by a glass domed roof. "The Court Gallery is the perfect setting for Michael Burke's large-scale works," says gallery director Einreinhofer.

Michael Burke's



"Celestial Theodolyte"

Art at Lunch

Nancy Einreinhofer, director of the Ben Shahn Galleries at WPC, will open the college's fourth annual Art at Lunch program this Thursday, with a presentation on the art collections of famous London museums.

The free lecture is the first in a year-long series devoted to 18th and 19th century British and French art. The program will begin at 11:30 a.m. in the Ben Shahn Center for the Visual Arts on campus. Attendees are invited to bring their lunch to the informal gathering. Special parking is available in Lot 6, near the WPC Rec Center, and a shuttle bus will transport visitors to Ben Shahn beginning at 11 a.m.

Einreinhofer will provide

an overview of the diverse art collections of such London institutions as the National Gallery, the British Museum, the Tate, and the Victoria and Albert. "London's museums were among the first constructed in Europe," Einreinhofer said, "and therefore they house many of the world's finest artistic masterpieces."

WPC's 1988-89 Art at Lunch series, while designed for the armchair traveler who wishes to explore European art, will also serve as a preview for an upcoming trip to London and Paris which is being coordinated by the college's art and theatre departments. The trip, tentatively scheduled for June 1989, will be open to the public.

GET A HEAD START ON YOUR FUTURE

at
THE PRUDENTIAL CAREER EXPO
Wednesday October 5th
3:30 - 7:00pm

If you're an ambitious and energetic individual with executive potential, exciting possibilities await you at THE PRUDENTIAL — one of the nation's largest diversified financial services organizations.

Come to the CAREER EXPO at our corporate offices in Roseland and explore the challenging careers available in:

- Financial Services
- Information Systems
- Asset Management
- Administration
- Medical Technology

At this information gathering seminar, you'll have an opportunity to talk with PRUDENTIAL executives from your area of interest, as well as recent college graduates who are now members of the PRUDENTIAL team.

If you have a strong background in Accounting, Finance, Economics, Math, Computer Science, Liberal Arts, Chemistry and Biology, this is a great chance to discover what lies ahead! Join us on October 5; refreshments will be served.

Contact the Career Placement Office for more information. And if you can't make it to the Career Expo, send your resume to: The Prudential Employment Center, Personnel Dept., 56 N. Livingston Avenue, Roseland, NJ 07068.

THE BIGGEST IS LOOKING FOR THE BEST!

equal opportunity employer

The Prudential



Director named to Board

BY LISA MUSAWWIR
ARTS EDITOR

Nancy Einreinhofer, director of the Ben Shahn Galleries at WPC, has been named to a three year term on the Board of Trustees of the Museum Council of New Jersey and was also elected to serve as treasurer of the statewide organization.

Einreinhofer says, "By being involved in this state organization, there is mutual support and help with solving problems." She also adds, "The museum council funds educational programs and workshops for the institutional members." Besides her duties as treasurer, she will be assisting in putting these programs together.

Einreinhofer has been the galleries director since 1979. Her past credits are curator of the O.K. Harris Works Art Gallery in N.Y.C. and art critic for several newspapers in New Jersey. She has been involved with

many exhibits and awarded grants by the National Endowment for the Arts, the National Endowment for the Humanities and the New Jersey State Council on the Arts.

A graduate of WPC including both bachelor and master's degrees, Einreinhofer is working towards her Ph.D. in museum studies at Leicester University in England.

Currently, she is a member of the American Association of Museums, the American Association of Art Museums and the Association of College and University Museums and Galleries.

"The Museums Council is a state wide organization that services all museums in New Jersey and they are in residence at WPC in Ben Shahn," says Einreinhofer. She adds, "It's an organization that is growing and becoming more active. We are pleased to have had the opportunity to support the organization in this manner."

Nancy Einreinhofer



Director of Ben Shahn Galleries

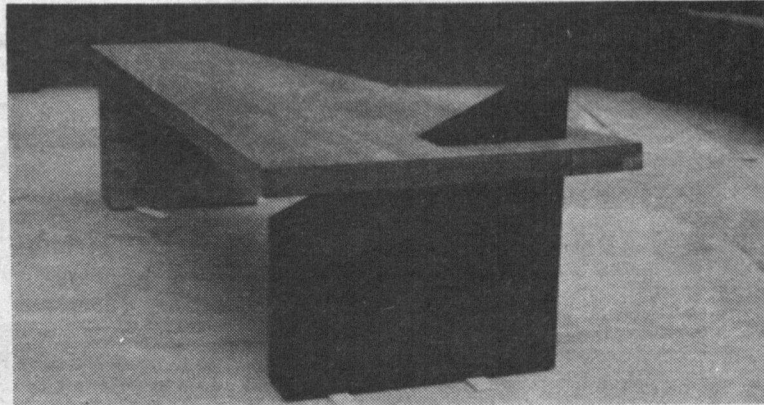
Student Spotlight: Emphasis on Excellence

Nine talented WPC art students will be in the spotlight during an upcoming exhibit of their works on the college's campus in Wayne.

"Student Spotlight: Emphasis on Excellence in Painting and Furniture Design" will feature works by both undergraduate and graduate art students. The show will

interest."

Featured in the painting exhibit will be works by Jean Stella, a master's degree candidate from Ridgewood; David Finn, a senior from Leonardo; Len Mykietyn of Bloomingdale, a junior; Paul Laliberte, a graduate student from New Milford; and David Gilmour of Lincoln Park, a senior. The



Scott Julian's coffee table

run from Sept. 19 through Oct. 28 in the East and South Galleries of the Ben Shahn Center for the Visual Arts on campus. Gallery hours are 9a.m. to 5p.m., Monday to Friday; admission is free. An opening reception will be held on this Thursday from 5 to 6:30p.m. in the galleries.

Nancy Einreinhofer, director of the Ben Shahn Galleries, says the exhibit is part of a continuing effort to showcase the works of the college's student artists. "Previously, we have featured works by students in graphic design and the exciting new computer graphics program," einreinhofer says. "This time, we selected the mediums of painting, a traditionally strong area at the college, and furniture design, which is rapidly attracting student

group will show a diverse selection of works, including portraits, abstract designs and mixed media on wood.

The furniture design show will include works by Gilmour, WPC juniors Joshua Paul of New Milford and Scott Julian of North Caldwell, and WPC seniors Marc "Bear" Jones of Passaic and Michael Rinaldi of Florham Park. On display will be a variety of items created with such materials as plastic laminates, wood veneers and fine woods.

Art Department Chair Alan Lazarus, who heads the furniture design program along with adjunct faculty member Joe Van Putten, says the pieces in the show were selected for their concern with the history, aesthetics, design problems as scale and proportion, as well as fine art issues of texture, form, illusion and surface manipulation," Lazarus explains. "The result is a show of utilitarian furniture designs that communicate a personal aesthetic."



Laliberte's "General Tso's Chicken"

New Music Festival Series Begins

The exciting and often provocative sounds of contemporary chamber music will be presented during WPC's 1988-89 New Music Festival concert series, set to begin tonight at 8p.m. in room 101 of the Shea Center for the Performing Arts. Admission is free.

Schulte's program will include a variety of works by twentieth century composers. Among the pieces he will perform are Mario Davidovsky's "Synchronisms No. 9" and Elliot Carter's "Riconoscenza per Goffredo Petrassi," two works for solo violin.

A founding member of the new music group *Speculum Musicae*, Schulte is well known for his performances of contemporary works. He has appeared as recitalist and orchestral soloist throughout the US and Europe; the *New York Times* has described his music as "a mixture of technical fireworks, emotional heat and intellectual command."

Schulte, born in Germany, was the top prize winner in the Munich International Radio Competition in 1969. He subsequently came to the United States to study with violin virtuoso Ivan Galamian at the Curtis Institute of Music.

WPC's New Music Festival is directed by Raymond Des Roches, a WPC music professor and renowned percussionist. He developed the free Monday night series as a way "to highlight the brilliant musical works of contemporary composers." The 1988-89 season will feature music by such prominent composers as Charles Wuorinen, Milton Babbitt, George Crumb, Michael Colgrass and Daniel Levitan.



Presents

Welcome Back Special

with our special discount prices

offered only to special WPC students. All you need is a valid WPC ID and the coupon below to receive our exclusive discount rates.

Maintain your summer tan or start your tanning now!

(201) 432-2960

Located just 5 minutes from WPC campus



FEATURING WOLFF SYSTEM TANNING SALON
Newly Remodeled, Bigger & Better Beds!

BRONZE BODY III TANNING



HIGH MOUNTAIN PLAZA • NORTH Haledon • CALL 423-2960
(Corner of High Mountain Rd. & Sicomac Rd.)
OTHER LOCATIONS
5 W. Passaic St. & Rochelle Ave., Rochelle Park 843-6627
1620 Lemoine Ave., Fort Lee 947-2080

All Specials Listed Above Good
Only In North Haledon Location

Temporary Employment

to work at Princeton Ski Shop's
Giant Stadium Sale

Nov. 5 - 13

Day and Evening Hours
Flexible Schedule
High Pay

Call (201) 843-3900

Princeton

SKATE & SKI CHALET

BERGEN MALL

PARAMUS, NEW JERSEY 07652

Moon over Parador

BY GEORGE SCHMIDT
ARTS CONTRIBUTOR

Director Paul Mazursky has always been a keen observer to cultural clashing and social satire. Here in his new movie, *Moon over Parador*, he successfully pratfalls into political pathos.

Neurotic American actor, Jack Noah (Richard Dreyfuss) is wrapping up a movie shoot in the fictional Central American country of Parador and after meeting its dictator Alphonse Simms (also Dreyfuss in a delightful dual role) celebrates his final night by drinking the nation's celebrated (and lethal) drink of 'poona'. Only it won't be his last night at all.

Simms suffers a fatal heart attack after one too many poonas and his chief of security, Roberto Strassmann (maniacally played by Raul Julia) has Noah Shang-Hai'd and brought in to see the deceased leader hanging in a meat locker. Strassmann impressed by Noah's earlier impersonation of Simms insists he portray the leader. Noah is greatly reluctant ("Why didn't you get Bobby DeNiro or Dustin Hoffman?") but contemplates this as an actor's role of a lifetime and decides to go through with the masquerade (with the help of Strassmann's threats of death and advice on the dictator's mannerisms).

Not only does Noah have to fool his personal staff, his citizens but also Simms' commoner mistress Madonna (spicefully played by sexy Sonia Braga) who helps Jack realize all the aspects of his role (including the love affair).

Noah succeeds despite improvising a carefully rehearsed speech to the nation with the words of "The Impossible Dream" and later makes some shocking but helpful changes to the hurting nation. He even shows a little of Marcos (with his aerobics work-out) and Reagan (pretending not to hear the press over helicopter blades) in his performance.

Richard Dreyfuss is a simple delight and plays both roles as the neurotic actor and charming dictator to the hilt. One of his best in recent years. Sonia Braga adds intelligence and sexual fire to her role and bounces off Dreyfuss wonderfully. Raul Julia is insanely perfect as the sinister right arm man who gleefully allows his nasty Nazi-like disposition to take action. Rounding out the ensemble cast is Jonathan Winters as a disgruntled CIA agent and cameos by Charo, Sammy Davis, Jr., Dick Cavett and Mazursky in drag as the dictator's widowed mother who loves to shop.

Moon over Parador is a wonderfully, silly romantic comic farce and will have you howling.

WPC's Midday Artist Series Continues

WPC's Midday Artists Series continues this Thursday, with a performance by the WPC Jazz Sextet, one of the colleges student jazz groups. The concert will be held at 12:30p.m. in Wayne Recital Hall. Admission is free.

The WPC Jazz Sextet is

directed by master Rufus Reid, head of WPC's nationally acclaimed Jazz Studies Program. Members of the group include Travis Shook of Olympia, WA on piano; Michael Zisman of San Carlos, CA on bass; Joe Farnsworth of South Hadley, MA on Drums; Chris Klinkhardt of Lake

Ronkonkoma, NY on trumpet; Charles Gattuso of Wayne on guitar and John McKenna of Norwich, VT on tenor saxophone.

WPC's Jazz Studies Program, inaugurated in 1973, offers a performance-oriented curriculum. The program's 60

majors are active in a variety of small performing groups, as well as a Latin jazz ensemble and big band. Several WPC student groups have won top awards at such prestigious events as the Notre Dame Collegiate Jazz Festival, Musicfest, U.S.A. and the McDonald's Jazz Festival.

CARLOS SOSA



GRANT JONES



SUSAN KRUSE



HOLLY A. VAN DEURSEN



MIT, Structural Engineering.

Analyzing and designing bridges. Developed working model of a double spandrel arch bridge. The HP-28S helps him analyze structural stress and geometry. It's the only calculator that lets him do both symbolic algebra and calculus.

It features powerful

matrix math and graphics capabilities. And HP Solve lets him solve custom formulas without programming. With more than 1500 functions, 32K RAM and both RPN and algebraic entry, the HP-28S is the ultimate scientific calculator.

University of Virginia, Finance.

Studies fluctuating stock and money market trends. Assisted head trader in Yen at Chicago Mercantile Exchange. The HP-12C with RPN lets him analyze prices,

New Achievers in Heavy Metal, Swing, Blues and Motown.

ratios, net present value and internal rate of return. He can even create his own custom programs. The HP-12C is the established standard in financial calculators.

UC Santa Cruz, Marine Biology.

Studies behavior of blue whales and effect of environment on distribution of marine mammals. The new, easy to use HP-22S has a built-in equation library with solver,

giving her access to the most commonly used scientific equations. Statistics with linear regression. And algebraic entry. The ideal student science calculator.

University of Michigan, MBA candidate.

Assisted on pricing projects for GM. The HP-17B offers easy algebraic entry. Plus time value of money, cash flows and linear regression to analyze budgets and forecasts. HP Solve lets her enter her own formulas and solve for any variable.

Hewlett-Packard's calculators are built for your success. Look for them at your campus bookstore. Or call 1-800-752-0900, Ext. 658E, for your nearest dealer.

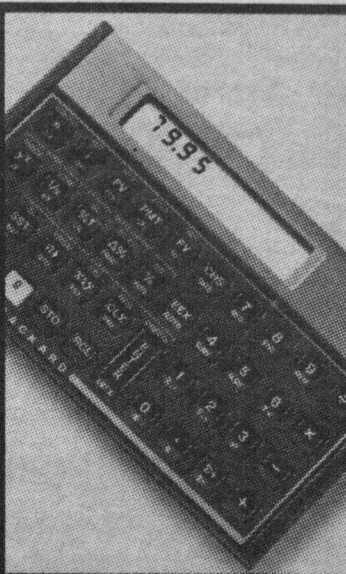
We never stop asking "What if..."



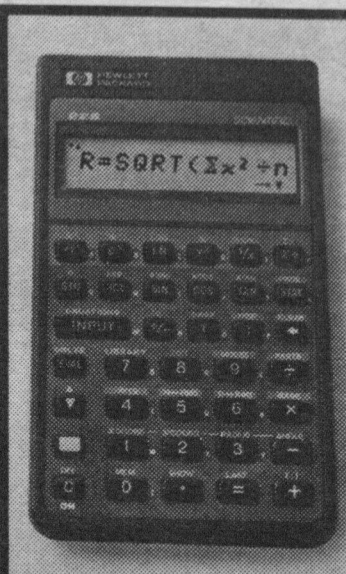
HEWLETT
PACKARD



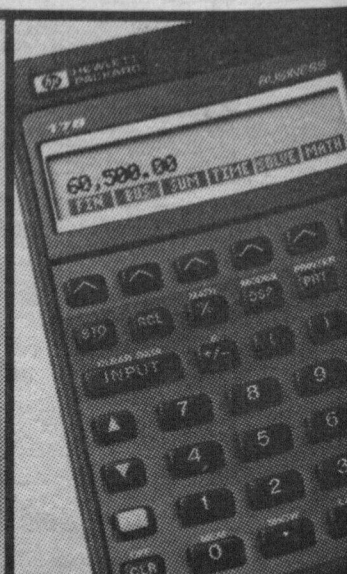
HP-28S SCIENTIFIC
CALCULATOR



HP-12C FINANCIAL
CALCULATOR



HP-22S SCIENTIFIC
CALCULATOR



HP-17B BUSINESS
CALCULATOR

FREE LEGAL ADVICE

Every Wednesday
2:00 p.m. - 8:00 p.m.
Student Center 330

Gerald R. Brennan SGA Attorney

SPONSORED BY THE STUDENT
GOVERNMENT ASSOCIATION

Back to School means...Back to Seriousness
about your hair, your nails, your complexion, your total look.

College is preparing you for the business world, where appearance counts! It counts now, too.

Obsession Hair Design can help you to achieve the image you need to feel good about yourself, to look great, to be confident. We'll cut, shape and/or color your hair, manicure your nails and our facialist will help to improve the quality of your skin. Ladies, come in for a professional makeup application. Find that sophisticated look, that individual style you've been dreaming about.

The time is NOW.

Student ID gets you a 20% discount on all products throughout the month of September. We feature Paul Mitchel, Sebastian, and Christine Valmy.

Obsession Hair Design
1055 Hamburg Tnpk, Wayne
(201)-633-9740

FILL IN THE BLANKS

NORMANN can fill the gaps in your schedule with high paying work opportunities. full-day, part-day or part week assignments available.

- *VACATION PAY
- *FREE TRAINING
- *REFERRAL BONUSES
- *SAME WEEK PAYROLL

CALL NOW TO SCHEDULE AN APPOINTMENT

NORMANN
TEMPORARY SERVICES
WAYNE 785-4064
PARSIPPANY 299-1950

New Director for ICE

BY PAMELA GIOVANNUCCI
CAMPUS STYLE EDITOR

Barbara Sandberg, professor of theater at WPC for 25 years, has taken over as Education and Program director of the Inner City Ensemble.

ICE is a company of dance, theater, music and visual arts. It was started in 1973 by Ralph Gomez, a graduate of WPC, said Sandberg. Gomez left ICE in 1986. ICE is funded in part by the Geraldine R. Dodge Foundation, the National Endowment for the Arts and the New Jersey Council on the Arts.

Sandberg said herself and Catherine Mitchell, an attorney in Paterson and the staff of ICE are now reorganizing. ICE is a Paterson based organization. "It's really important, because there isn't anything else like it in Paterson," she added. ICE is presently located in the

renovated 19th century church across the street from Paterson's Broadway Bus Terminal.

Sandberg said ICE will sponsor a professional dance and theatre company, a dance and theatre company for students, and a Hispanic company. "The goal is to increase the community participation for people of all ages to get involved in the arts," she said.



DANCE
THEATRE
MUSIC
VISUAL ARTS

In previous years, ICE dancers have performed at Rockefeller Center and on Channel 9. Sandberg said the professional dance and theatre company will go on a local tour to schools in the area.

The faculty and staff at ICE are skilled and dedicated professionals, with degrees and professional training from such institutions as the Julliard School, the American Ballet Theatre School and Columbia University. Sandberg added that some ICE graduates have gone on to be in major dance companies.

Classes and workshops will be offered in ballet, modern and jazz dance, scene study, intro to drama, clowning/juggling, drawing and painting, sculpture and costume design. Classes are held after school, evenings and Saturdays. Classes for students of all ages will begin Sept. 19 and there is open registration.

Auditions for the professional dance and theatre company will be held on Oct. 7. The auditions are open to all and all types of dance are welcome, Sandberg said. For further information call 279-9191.

IFSC Sponsors Greek Week

BY PAM GIOVANNUCCI
CAMPUS STYLE EDITOR

"Greek Week is to get people involved and show them how the fraternities and sororities work," said Bill Borenstein, Inter Fraternity Sorority Council (IFSC) president.

Greek Week runs from Sept. 19-23 and there are tons of activities planned, said Borenstein and he added, everybody is welcome, Greek or not.

Starting off on Monday, a Greek picnic is planned in West Plaza in the back of the Student Center. It will be held from 11 a.m. to 2 p.m. and hamburgers and hot dogs will be served, he said. He added that at 3 p.m. there will be a pool party at the pool in Wightman Gym.

On Tuesday at 8 p.m. in the Student Center ballroom, a Lip Sync contest will be held and students will be able to make their own ice cream sundaes. Borenstein said anyone can enter and that the applications are available in the Student Center, room 315.

The Student Activities Planning Board (SAPB) and IFSC are co-sponsoring a show with comedian Alex Cole at 8 p.m. Admission is \$1 for students and \$2 for non-students. Before Alex Cole comes onstage, a 10-minute skit will be put on by the Greek students on campus, said Borenstein. "The skit will be called 'Greek Island', and it is a theme to 'Gilligan's Island' and it should be really good," he said.

Greek Olympics will be held Thursday between 1-4

p.m. at the Caldwell Plaza in front of the Student Center. Events held include a water balloon toss, limbo contest, relay race using trays and cups, volleyball and a tug of war game.

Biloxi Blue, (the movie), will be shown at 8 p.m. in the Student Center ballroom on Friday. Admission is free, including the popcorn and soda.

The great thing about Greek Week is that everybody can check out the fraternities and sororities and "find the one that's right for them and have a great time," said Borenstein. Rush Week is Sept. 26-30, and usually the time when fraternities and sororities do their own rushing to acquire new members, he added.

Pub's 14th Anniversary

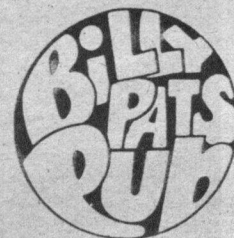
BY ANGELA ZITO
NEWS CONTRIBUTOR

Over 200 WPC students celebrated the 14th anniversary of Billy Pat's Pub on Sept. 8, said Tony Cavotto, director of auxiliary services. The annual event is one of the many theme nights sponsored by the pub over the semester, he said.

In honor of the occasion, the staff was dressed in black and white and the pub was decorated in the same theme colors. The night's events included a disc jockey playing "Top 40" music and a giant anniversary cake for all to share, Cavotto said.

Upcoming theme nights are Homecoming Kick-Off on Oct. 20, the annual Halloween

party on Oct. 22 and the Christmas Party on Dec. 15.



Billy Pat's Pub, originally known as "The Pub," opened Sept. 11, 1974, and has gone through a number of changes, Cavotto said.

Cavotto's first project was to complete the pub's renovations which began in 1976 with the planning stage to convert the pub's "cafeteria look" to a "club look" by 1978.

The pub gained a new look with a solid atmosphere, Cavotto said.

Another change in the facility was the replacement of live entertainment with a disc jockey and an improved sound system. At the end of the renovation, a contest was held to determine the new name of the pub. Student suggestions were handed in and "Billy Pats' Pub" was selected, Cavotto said.

The most recent change was four years ago, concerning the admittance policy. Students were allowed to bring a guest, but due to problems caused by fake identification, the guest privilege was taken away. However, alumni are permitted to bring a guest.

16 CAMPUS STYLE

Campus Police carry Olympic Torch

BY ROSE FANTUZZI
STAFF WRITER

Three WPC police officers carried one of the three leading torches that joined together in Princeton to kick off the Special Summer Olympics on June 28.

Police officers throughout New Jersey ran with the New Jersey Special Olympic Torch. One torch started at Island Beach State Park, one at the State House in Trenton and the third at the Wayne Municipal Building. All three torches joined together in Princeton where one leading torch was carried to Princeton University.

WPC officers Robert Mac Farlane, Al Clark and Todd Weiland represented the New Jersey Campus Police and P.B.A. Local 278. They raised over \$800 for the Special Olympians. Mac Farlane said that he, Weiland and Clark, at 7 a.m., ran down Pompton Rd. from the footbridge to the Foodtown in Haledon carrying the torch. "President Speert was watching us," he said. "You run the torch within your jurisdiction."

The running began at Wayne Police Headquarters, Mac Farlane said. A Special Olympian handed the torch to Wayne Police officers. The officers carried the torch from town to town, he said, only running until they met the next officers assigned to run.

A motorcade followed the officers keeping traffic away and had beverages on hand, he said. Eight policemen were available in case fellow officers did not show up and make the connection, he said.

A Special Olympian carried the torch into Princeton University Stadium, that was lined with officers from all over, he said. Mac Farlane said he spent three days at the games. "I was cooking hot



From left to right - Al Clark, Robert MacFarlane, and Todd Weiland

dogs and hamburgers most of the time and I gave out medals on Wednesday," he said.

The medals are bronze, silver and gold, and the games played were softball, equestrianism, tennis, running, wheelchair races, bowling and swimming, including others.

"The running is shorter" than the regular Olympics, he said. The Olympians' ages ranged from young beyond middle age. The schools compete and the counties send their best athletes, he said. This was Mac Farlane's third time running. He said he did it "for a good cause."

Special Summer Olympics were held at WPC for 3 consecutive years starting in '85, Mac Farlane said. "President Speert would love to have them back," but the housing situation is too much. The Olympians were sent to nearby hotels which made it difficult for them to rest.

AT&T, UNISYS, IBM and Princeton law firms sponsored the games, he said. They held Tent-Towns for the Olympians. Tent-Towns offer free games and prizes, he said. K- ROCK (92.3FM WXRK), gave out t-shirts and records. The officers finger-printed the Olympians, gave out balloons and personal pictures.

"I don't want a lot of hype. I just want something I can count on."

Pioneer Gear

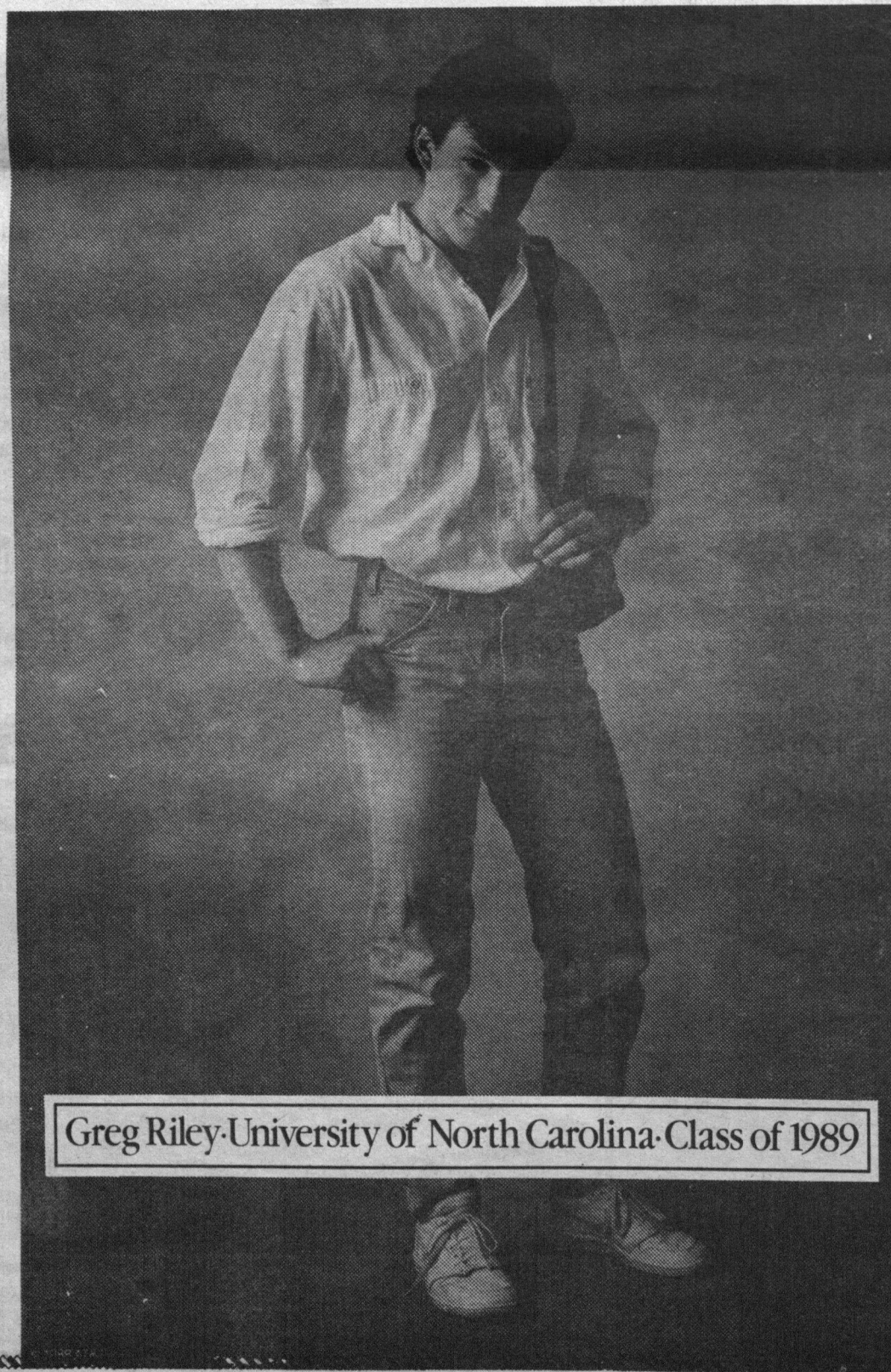
BY IVETTE KURI
STAFF WRITER

One of the goals of Pioneer Gear is to "create school spirit," said Rich McGuire, director of retail services. Pioneer Gear is a retail store of fashionable items made available to WPC students as well as the community.

The Sweet Shoppe was removed from the Student Center because it was not profitable, said McGuire. It was decided that a clothing store should occupy the location. Construction of Pioneer Gear went into effect over summer vacation, and officially opened for business during freshmen orientation.

Pioneer Gear is an extension of the WPC Bookstore and run by the WPC Foundation. The Foundation is a department of the college that provides goods and services to the college community such as the bookstore, food services, arcade etc... It is basically a student run operation and prices are largely determined by quality and labeling. Business is doing very well, and there are special hours planned for homecoming, openhouse and football games. Items that are sold in Pioneer Gear are: banners, decals, mugs, can-holders, sweatshirts, sweat-pants, shirts and shorts.

The hours are Monday to Friday from 10 a.m. to 4 p.m., and Monday to Thursday from 6 p.m. to 8 p.m.



Greg Riley-University of North Carolina-Class of 1989

Some long distance companies promise you the moon, but what you really want is dependable, high-quality service. That's just what you'll get when you choose AT&T Long Distance Service, at a cost that's a lot less than you think. You can expect low long distance rates, 24-hour operator assistance, clear connections and immediate credit for wrong numbers. And the assurance that virtually all of your calls will go through the first time. That's the genius of the AT&T Worldwide Intelligent Network.

When it's time to choose, forget the gimmicks and make the intelligent choice—AT&T.

If you'd like to know more about our products or services, like International Calling and the AT&T Card, call us at 1 800 222-0300.



AT&T

The right choice.

WPC starting run to NJAC championship?

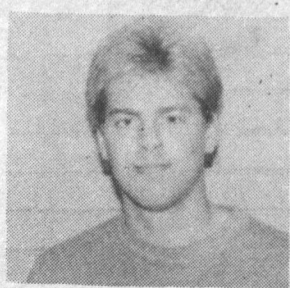
The word coming out of Wightman Gym is both loud and clear this fall.

The WPC volleyball team will settle for nothing less than a New Jersey Athletic Conference (NJAC) championship.

Coming off a 16-11 campaign in 1987 that saw the Lady Pioneers finish second in the NJAC regular-season and third at the conference tournament, WPC will be one of the favorites, if not the favorite, in 1988.

Glassboro, last year's regular-season and post-season champions, dropped its program over the summer, leaving the door wide open for favorites WPC, Rutgers/Newark and Stockton to capture this year's title.

"Yeah, I'd have to say it's between Rutgers/Newark, us and Stockton," said tenth-year WPC head coach Sandy Ferrarella, who guided the Lady Pioneers to NJAC championships in 1982 (co-



Craig Haley
On Volleyball

champs with Kean) and 1983.

"We have six kids that are seniors who have come so close in the past. This year I'd like to send them out with a championship."

The Lady Pioneers have already begun a quest for the NJAC title, opening its non-conference schedule with a 2-1 record. The squad's latest outings were last Thursday in a three-team match with

Concordia and Kings.

Against Concordia, a hard-hitting Division II school, WPC lost the first set, 15-4, then took a lead in the second set before falling, 15-13. Concordia finished a sweep by taking the third set 15-6.

"We predicted we would play them tough, but we didn't think we would beat them," Ferrarella said.

Beating Kings, however, was a different story. Using an all-around, team effort, the Lady Pioneers won their second match of the year, 15-8, 13-15, 15-6.

"Not really," said the coach when asked if any particular players stood out, "it was basically a total team effort."

"That's the only way we're gonna do it this year (win the NJAC title). We have no stars on our team."

But if there is one player WPC may look to for star qualities it's senior setter

Cheryl Stetz. An All-Conference selection for the second straight year in 1987, Stetz is one of the most intense, hard-working athletes on the WPC squad.

"I think our whole team revolves around what she does," Ferrarella said of Stetz.

Also leading the Lady Pioneers into action will be seniors Denise Talley and Kristin Holmes, both All-NJAC selections a year ago, and returning players Adrienne Cimino, Cheryl Williams, Patty Pizzichillo, Val Amatulli, Diane Weigelt and Maria Colon.

Newcomers Jeryl Orsino, Bonnie Poltorak, Tracy Hartos and Tanya Vasarovich round out the lineup for the Lady Pioneers.

Any unanswered questions about the Lady Pioneers may be answered tomorrow night when the team travels to Rutgers/Newark for a pivotal, early-season showdown with the Scarlet Raiders.

Baseball

Pioneers drop two

BY MICHAEL PETRUCCI
SPORTS CONTRIBUTOR

The WPC baseball team lost its first two fall games last week. The Pioneers looked good in both games, but unfortunately came out on the short end.

On Thursday, the Pioneers lost their first game to West Point, 6-4. Rick Capozzi, a returning senior who batted .406 last spring, hit a 375-foot home run in the loss, while Izzy Santos, sophomore, went 2-for-2 with a double and triple. Head coach Jeff Albies was very impressed with his team's effort.

The Pioneers traveled to Staten Island on Saturday for a split-squad game, where WPC lost 8-7. Craig Contini, a freshman from Hawthorne, had a triple and double and Ralph Perdomo, a freshman from Memorial High in New York, hit the ball hard. He singled in a run for WPC. Mike Muscillo, a transfer from Monmouth College, also had a strong day for the Pioneers.

Although WPC lost its first two games, the team looked good. The Pioneers should be ready come spring-time when the games really matter. Albies will have his team rolling and winning.

WPC went 35-10 last spring, when it won the New Jersey Athletic Conference championship for the third straight year. They reached the Division III World Series in Bristol, Conn. (the nation's final eight teams), but bowed out with two straight losses.

Is it Olympic Games or family vacation?

Ready for a quick sports quiz? Okay, what do canoeing, horseback riding and archery all have in common? Well, besides being things you can do at a Pocono Resort they are all officially sanctioned, medal-awarding Olympic events. And for me, this is what makes the games so fun.

Simply the outrageousness of some of the so-called "sports" they include in the games makes the long two weeks of television coverage worth watching.

Rhythmic Gymnastics is a personal favorite. This event involves girls who roll and jump around the floor while bouncing a ball. It's amazing they made an Olympic event out of something I used to do on rainy days when I was five.

What's next? Olympic

Extra Points/ Mike Doran

Team Twister? I can hear the television play-by-play now. "Well, this is the turning point of the match. They need to execute the difficult left hand on blue maneuver to take home the gold."

Finally, one more observation. How is it that the Olympics have basketball, baseball, and hockey but no football? The international competition would be great. I hear the East German women's team is very good.

It hasn't gotten much attention, but the sixteen players who have tested

positive for drug-use has to be one of the most pathetic sports stories of 1988.

No, come to think of it, the American League East is the most pathetic sports story of the year.

Cross country squads begin 1988 campaigns

BY RENEE BRAHIN
SPORTS CONTRIBUTOR

It's time to break out the sweats and sneakers and get set for the 1988 cross country season!

Our men's team opened its season on Saturday at the Fordham Invitational held at Van Cortland Park, N.Y. The Pioneers ran against tough Division I and II competition, finishing seventh out of eight teams. Returning this year as a sophomore runner, John Coelho (MVP 1987) strided over the challenging five-mile course in 29:01, placing 29th overall. Freshman Jeff Shorling cruised over the course in 29:58 (34th). Also returning is sophomore Brian Bill (31:44, 38th). Running well in this

season opener were freshman Robert Davis (33:19, 42nd), Pete Bray (xc'87, sophomore, 33:42, 43rd) and sophomore Steve Finnan (35:33, 78th).

The women's team opened its season yesterday at the Trenton Invitational at Washington National Park, Trenton. Our Lady Pioneers ran tough over the scenic and historical 3.1 mile course, finishing seventh out of ten teams. Returning to the team is junior Renee Brahin (MVP '86, '87), who finished in 22:46 (48th place). Newcomers are junior Ann Marie Wright (22:58, 51st); frosh Denise Gorrao (23:27, 53rd); junior Charlene Macalle (24:18, 59th); frosh Karen Martin (25:43, 66th); and Mary Carson (28:19, 78th).

Rec Center News

THE TOWER CHALLENGE COED SOFTBALL

THE TOWER CHALLENGE IS ALREADY UNDERWAY WITH EIGHT TEAMS (FIVE TEAMS FROM SOUTH TOWER AND THREE FROM NORTH TOWER). GAMES ARE STILL BEING PLAYED AND THE COMPETITION IS GETTING TOUGHER AS PLAY-OFFS APPROACH. THE CHAMPIONSHIP GAME IS SCHEDULED FOR MONDAY 9/19, AT 4:30PM, ON THE FIELD HOCKEY FIELD. COME AND CHEER FOR YOUR FAVORITE FLOOR TEAM. OUR THANKS TO LEN FARBER, SHELLEY MARUSHOK, JOE KING, DEBBIE LIEBERMAN, THOMAS SHUMAN, ANNE DEIGHAN, STEPHEN TACKACS, TRACY K. MCPHAIL, GLEN MEHL, RICKY HOOS, CHRIS ARABIO, AMY CONGDON, PAUL PLESNIK AND SHERRONDA WILLIAMS FOR THEIR SUPPORT.

FLAG FOOTBALL ENTRIES DUE - SEPTEMBER 19TH AT 5:00PM

TURN ALL ENTRIES INTO THE REC CENTER CONTROL DESK. CAPTAIN'S MEETING - SEPT. 20TH AT 4:00 AT REC CENTER. PLAY BEGINS ON THURSDAY, SEPTEMBER 22. GET YOUR TEAM IN!!! MEN'S AND WOMEN'S LEAGUES.

\$\$\$ FLAG FOOTBALL OFFICIALS NEEDED \$\$\$

MANDATORY MEETING FOR ALL FOOTBALL OFFICIALS, TIMERS AND SCOREKEEPERS ON MONDAY 9/19 AT 5:00PM. MEET AT THE REC CENTER. WE WANT YOU TO WORK WITH US!!!

TENNIS TOURNAMENT

MEN'S & WOMEN'S SINGLES TENNIS TOURNAMENT VARIOUS DIVISIONS. OPEN TO ALL WPC STUDENTS, STAFF, FACULTY AND ALUMNI. ENTRY DEADLINE - SEPTEMBER 21. LEAGUE MEETING - SEPTEMBER 22. PLAY BEGINS - SEPTEMBER 26.

AEROBIC CERTIFICATION WORKSHOP - OCTOBER 15 TH!!

AEROBICS CLASSES

NOW BEING HELD AT THE REC CENTER.

3:30 PM
4 & 5:15 PM
4:00 PM
7:00 PM
11:30 AM

ABDOMINALS OR HIPS & THIGHS WORKOUT
HAPPY HOUR AEROBICS & FITNESS
T.G.I.F. AEROBICS
PRIME TIME AEROBICS
CARTOON AEROBICS

TUES. THRU THURS.
MON. THRU THURS
FRIDAY
MON. & THURS.
SATURDAY

FEES: \$15.00- STUDENTS
\$25.00- FACULTY, STAFF, ALUMNI, OTHER
\$1.00- PER SESSION FOR NON-MEMBERS

\$\$\$ AEROBICS INSTRUCTORS WANTED \$\$\$
APPLY AT REC CENTER

FREE T-SHIRT TO THE FIRST 50 MEMBERS!!!

Soccer Loses

PIONEERS from page 20

because of leg injury. He'll be red-shirted, Freshman back Pete Kelleher was also lost for 4-6 weeks with stress fracture. . . WPC has scored only four goals in the five games. Fabio Aducci has three of them. "He's just relentless up front," said Nygren of the freshman forward. "Defenses have to be concerned with him." . . The Pioneers scored 22 goals in 19 games in 1987.

Pisarcik stops 34 shots, but Lady Pioneers lose

BY RAYMOND KRUPA
SPORTS CONTRIBUTOR

The WPC field hockey team suffered its first loss of the 1988 season last Wednesday. Despite an outstanding effort by freshman goalie Kim Pisarcik, the Lady Pioneers fell to Scranton, 2-0.

Pisarcik recorded 34 saves against Scranton, a team that held WPC to only four shots on goal. But it was an unexpectedly long bus ride

to the Pennsylvania school that may have contributed to the Lady Pioneers' poor offensive showing. The trip was supposed to take 1 1/2 hours, but traffic turned it into a three hour effort. As a result, the Lady Pioneers arrived late to the game.

WPC head coach Cyndi Gramlich-Covelio expects her team, now 0-1-1 on the season, to fare better against



The 1988 WPC field hockey team.

Kean tomorrow afternoon in the New Jersey Athletic Conference opener (4 p.m.

start). Last year, the Lady Cougars dealt WPC 2-1 overtime and 2-0 losses.



Student Activities Programming Board

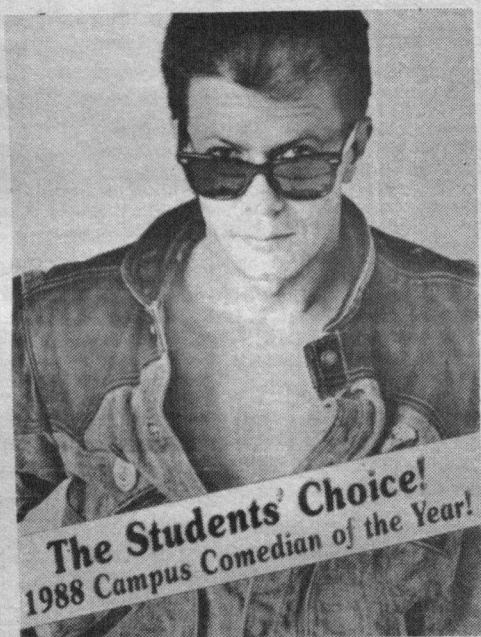
Comedy

Alex Cole

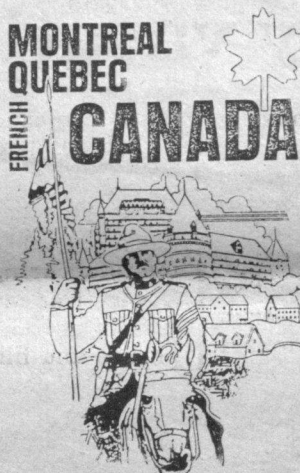
Wed., Sept. 21
8:00 p.m.

Student Center
Ballroom

Admission
Students \$1
Non-Students \$2



Travel



**Bus Trip
To:**

Sept. 30-Oct. 2
\$96

Deposit Due
Sept. 21

Student
Center 315

Deposits Non-
Refundable

Movie

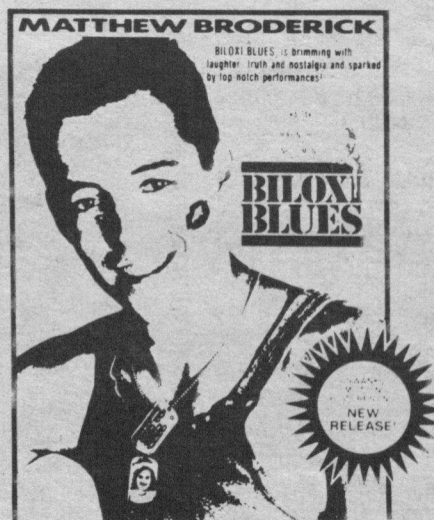
Biloxi Blues

Fri. Sept. 23
8:00 p.m.

Student Center
Ballroom

Admission:
FREE

Coming up:
Fatal Attraction



Lecture



Marla Hanson

Wed., Oct. 19
12:30 p.m.

Student Center
Ballroom

Admission \$1

SAPB MEETINGS

Cinema/Video - Wednesday, 4 p.m., SC 303
Festivals - Wednesday, 1 p.m., SC 303
Minority Programming - Wednesday, 4 p.m., SC 303
Travel - Wednesday, 11 a.m., SC 303
Concerts - Thursday, 3:30 p.m., SC 303

Advertising - Thursday, 1 p.m., SC 303
Daytime - Wednesday, 4 p.m., SC 303
Lectures - Wednesday, 11 a.m., SC 303
Entertainment - Tuesday, 1 p.m., SC 303

General Meeting - Wednesday, 5 p.m. SC 213

Personals

All Males — Alpha Sigma Phi Frat. Rush meeting Sept. 28 & 29, 7:30 p.m. For more info. call Jim at 956-0782.

To My Mun-Mun — I love you more than anything! Always, your Butterfly

TKE #275 — Fair is Fair. I still owe you a "private" breakfast in bed. All of my love **U Know Who**

To Tom and Rich of Heritage 602 — Hi Kungs! Moi, Eat any ice cream lately? Hey C.M., where are all your LITTLE LITTLES? Hiding under your trenchcoat?

Freshmen Femmes — Build a network of life long friends. Become a Phi Sigma Sigma Sister!! For more info. call 839-2934.

Attention WPC Women — Looking for friends, fun, and unforgettable memories: Phi Sigma Sigma invites you to attend their Luau Rush, 9-28, Wayne Hall 216 C&D at 7 p.m.

Hey Girls — Phi Sigma Sigma is having a picnic 9-26, 7 p.m. in Student Center Rm 324, and we promise no ants; just food, fun and friends.

Open Rush — Delta Phi Epsilon. An International Sorority. Membership has its privileges. Monday 9-26 9 p.m. Wayne Hall Tues. 9-27 9 p.m. Student Center 324.

Joe Rec — Pay backs are a bitch! Sue Subs

WPC Women — The Phi Sig Sisters cordially invite you to a rush rally. Come meet us and our handsome brotherhood fraternity, the famous Phi Tau's, on 9-29 at 8:30 p.m. in Student Center Rm 324-5.

Marc — "To Brunettes" Love, Lysa & Robyn

Stacie — Just wanted to thank you for everything. I couldn't have asked for a better roommate or friend. Thank you again. Kris

John — Hope you have a great 21st Birthday (Sept. 18th). Kris

Inkman — Have a great 21st birthday and best of luck as our new president **Love The Brothers and Angels of Beta Phi Epsilon**

To All BOE's — Hope your summer was as great as this year is going to be. Best of luck to all brothers who have graduated. yours in Beta **Rubble & Chip**

RA's and Orientation Leaders — Family Feud was a GOOD ANSWER, Don't you think? How about a Big Leo Hug? **Bouge and The Locomotions**

Freshman Students — Always PLAYFAIR and give yourself a STANDING OVATION, remember 2-HALT when you are involved in Good Clean Fun. **The Orientation Leaders**

Paul — I'm still sitting on the Dock of P-612 and waiting for your call. **Michele**

Mark Romano and Orientation Leaders — Are waiting for The Dock of The Pay. DOCK-EM! DOCK-EM! DOCK-EM! Sincerely **Bouge and The Locomotions**

Eden — When ALL was said and done, we came up friends. Where have all the Cocoa Puffs gone - **ROOMIE. Bouge**

Moo-Remember, I'm here! You, me and Bex can form the Lonely Hearts Club. Don't happy couples make you sick? **JT**

Joe C. and Nor B. — Get to work you mutants! Go to church and stop being immoral! **Love, The Creative Corner**

Isabelle — I'm sorry you didn't get a personal last week. I love you forever! **The Flirt**

Shawna — You're the greatest girlfriend a sports writer could ever ask for. And the hottest!!! **Love, Craig**

Ignoreen — What's this about a razor? **Us**

Bexter — Tell me more about my eyes! Too bad I don't have a body to match! **JT**

Jackie — Is this your first personal? Let's go dancing sometime, and have a serious conversation! **JT**

Dan Lubiner — MY BRAIN HURTS! Were you expecting an inquisition or a phone call anyway? **KUNG**

NEB — How can you complain about \$250 a year for car insurance with a \$50 deductible? I'm moving to Iowa tomorrow! **McGoo**

Marge — Lonely rivers run to the sea. Lonely rivers sigh. Wait for me, I'm coming home. I miss you so much. I hope you know that. The pipes are calling me. **Love Forever J**

Andrea — YOU'RE GREAT! Thought you'd like to see it in print — **Yours**

All Personals and Classifieds must be submitted by 6 p.m. the Thursday Prior to Publication.

Personals are to be no more than 25 words and cost \$1. Classifieds are \$3.50 per run for up to 25 words and \$4.50 per run for 26-35 words.

The Beacon staff reserves the right to refuse personals and classifieds which it deems inappropriate.

T.P. — You know, it's been a very long time since we had one of our philosophical conversations. **JT or is it John?**

Val — Isn't it just like a farm girl to leave you sitting in a K-Mart parking lot eating onion rings alone? **Some friend**

Dee — I buried the cat, it kept clawing me! It's amazing, I've seen yellow lines on the road before, but not quite this large! Don't Dream it, Be it! **Mr. Conclusion**

Men Students-Tau Kappa Epsilon, International Fraternity invites you to its Rush. Tues. Sept. 27th, 8:00 p.m. Student Center 332 and Thurs. Sept. 29 8:00 p.m. Wayne Hall 216. 790-8830. **Zonker, TKE**

Johnny Mac — We didn't mean to "alarm" you. Thanks for your help but we used the other picture anyway. Next week-the Bookstore! **Violent Femme and Noreen**

Beaconoids — It's been two weeks and it's already begun to click-you should be proud. I know I am! **Violent Femme**

Beaconoids — Another award winner. Only 21+ to go! Keep up the good work. **Ignoreen**

Joe — Stop taking lessons from Val-ium. I'll take you to King George for ice cream. **NEB**

Val-ium — Are you really an inbred? Stop the nonsense! You leave us, you die! **Ignoreen**

To the Congruent crowd — How's life in the fast lane? I'm doing what I do best down here, causing Trouble! **The Troublemaker**

CM — How's the LITTLES treatin' ya? Rich, I love you, goo goo goo! From Your **Four Year Old Wife**

Michele — Nobody does it better! We love ya! Keep up the good work. We'll have you broken in in no time! **The Late-Night Crew**

Suzy-Q — Quit yer bitchin' and get some work done! Hey, want some bunnies? **Val**

Landscaping — Reliable hardworking individual needed for PT or FT position. Flexible hours, good wages, will train. Call 447-6205.

Telemarketers — No sales involved. Promote energy conservation program for NJ utilities. Flexible hours. \$5 plus bonus. Good for Marketing and Communication majors, but all majors welcome. Call Bob McKenzie at 890-9433.

Retail Sales — Princeton ski shop in Paramus seeks salesperson's in both clothing and equipment departments. Full and part time. Flex. schedule, good pay for experienced individuals. Call 843-3900.

Need a part time job? — Enjoy working with people? Friendly, caring individuals are needed to teach life skills to adults with handicaps. No experience required. Wayne, Paterson and Oak Ridge. Call 697-5946.

Help Wanted — Looking for PT help to work in home show booth. No experience needed. Call 429-8710.

Part time — General office work. Steady position with manufacturing distributor. Diversified duties include light typing, answering phones and filing in Haledon office. Call Joe at 595-0029.

Nursery School — Teacher's Assistant. Great experience for ECE major. Part time Tues. and Thurs. 9 a.m. to 5:30 p.m. 10 min. from WPC in Hawthorne call 427-3518.

Home Typing — Prompt, reliable service. Business letters, reports, resumes. Call Pat 962-4534 after 3 p.m.

For Sale — 84 Renault Encore, 4 dr. hatch, 4 sp stick, blue metallic, tint glass, rear defog, 29 k miles, new tires and asking \$2100. Dr. Shinn Biology. 595-2487, 24 hrs.

Child Care — Responsible person wanted with own transportation to watch my 51/2 yr. old daughter in my Wayne home. Occasional Mon. and Tues. evenings. Call 694-0621, leave message after tone.

Part time — Salary \$7-\$12 per hr. Flex hrs., no typing, no experience required. Little Falls office. Call Mr. Peters, 890-9546.

Part time — Driver needed for light deliveries in Passaic County area. Excellent salary. For more info., call Mr Douglas, 890-9547.

Work Wanted — Lawns, leaves, trimming, edging, small painting jobs, clean-up, windows, excellent quality work. Bicycle repair, you name it. Piano lessons, Keyboardist available to jam. \$8 1/2 hour. Call Mike 835-8903.

Child Care — Part time 3 days a week. 9-5 or 10-6 flexible. To care for my 1 yr. old son in my home, non-smoker, own transportation. Please call 891-8678. \$5/hr.

Part time — Flex. hours in Wayne. Day hours, MUST have car, No experience necessary. \$6.00 hr. after training. Plus Bonuses! Cleaning houses. Guys welcome. Call 838-8298.

Part time — Position available in customer service, billing, telephone. Five minutes from campus. Flexible hours 4-5 hrs. per day. Call Tom at 942-8900.

STUDENTS

Part-Time Opportunities
\$6.75/Hr.

with flexible
schedules to meet your
school needs

Current availabilities:

- Nursing Assistants/Orderly
- Unit Secretaries
- Food Service Workers
- Clerks

Apply in person or call for application
(609) 734-4586

253 Witherspoon St., Princeton, NJ 08540.
An equal opportunity employer M/F.

Where tradition & innovation meet.

THE MEDICAL CENTER AT
PRINCETON

Pioneers booted by Rutgers-Newark

BY CRAIG HALEY
SPORTS EDITOR

First-year WPC head soccer coach Roy Nygren is having a difficult time in picking up his initial collegiate win.

After seeing his Pioneers drop to 0-4-1 on the year with a 2-0 loss to Rutgers-Newark Wednesday night, Nygren was hoping to guide WPC to a win over Baruch on Saturday night. But a power failure on campus didn't agree with the coach's wishes, canceling the game and leaving Nygren winless as a college coach.

"It was definitely disappointing," said Nygren, "we had an opportunity of beating them (Baruch). We were all

Soccer team still looking for first win

ready to play then the lights went out. I don't think we're going to be able to work things out with them as far as re-scheduling the game. Now we have to look to (this) Wednesday night against New Jersey Tech."

The Pioneers face NJIT Wednesday in a 7 p.m. game at Wightman Field. NJIT, led by scoring sensation Tony Fitch, is currently 4-1-1.

"They're a solid team. They have plenty of returning players," Nygren said of NJIT.

Experience is something Rutgers-Newark didn't have, although you couldn't have

told the Pioneers that last Wednesday. The Scarlet Raiders came to Wightman Field and shut down the young WPC attack.

"Rutgers-Newark is not the same as last year," said Nygren, who wasn't the Pioneers' coach when WPC battled the Scarlet Raiders to a 2-2 tie in 1987. "They came in and had a very nice team. They look like they will have a nice season this year."

Joe Gleichenhaus, off a pass from Sal Mancini, beat WPC goalie Ken Beitle with a 22-yard, left-footed goal at the 37:11 mark of the first half to

give the visitors a 1-0 lead. Four-and-a-half minutes later, Rick Perine scored off a pass from Kyle Haddock to give Rutgers-Newark a two-goal advantage.

The Pioneers attempted to battle back in the second half, but didn't amount to a serious threat. WPC was outshot, 12-1, with Beitle recording six saves.

"We had our chances a couple of times," Nygren said. "Twelve shots to one sounds so misleading. That game was really played in the midfield. I thought it was one of our better performances."

Especially in the backfield, where Nygren received a strong effort from his players. "Our defense, Gareth Pearce, Al Garcia, George Bedoya and freshman Chris Neuhs has done a very nice job back there," said Nygren, whose squad is 0-1-1 in New Jersey Athletic Conference games. "They've put together two straight good games, Rutgers-Newark and Stockton."

PIONEER FACTS — Several injured players, including senior goalie Rich O'Brien, returned from injuries last week, but Glen Elias, a junior co-captain, was declared lost for the season.

See PIONEERS page 18

TSC edges WPC football team

BY CRAIG HALEY
SPORTS EDITOR

Accepting humbling defeat is one thing. Accepting a hard-luck loss is another.

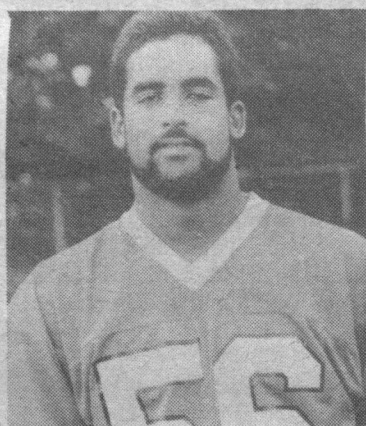
Just ask any member of the WPC football team.

On Friday night, for the second straight week, the Pioneers lost a game that they not only could have, but perhaps should have won. The latest defeat came at Trenton State College, where WPC fell to a strong Lions squad, 7-6.

Frustration was evident all night long on both sides of the line as 24 penalties were called in the flag-filled game. But the biggest frustration came afterwards, when first-year head coach Tom DeMaio and squad had to face up to the fact of another heart-breaking loss.

The defeat was also the New Jersey Athletic Conference opener for WPC.

A Billy Donoghue extra point after a Colan Ford touchdown reception in the third quarter provided the difference as the Lions ran their record to 2-0.

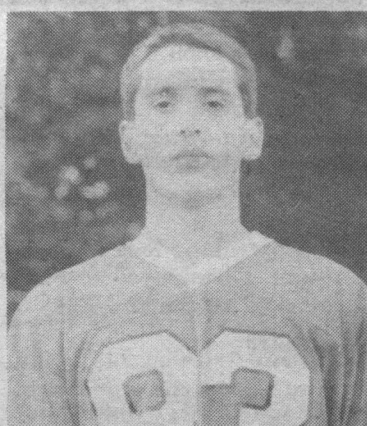


John Rivera
...defensive standout

WPC took a 6-0 lead in the first quarter when Brian Leary lofted a nine-yard touchdown pass to freshman receiver Tom Houle. Dave Lincoln's PAT failed, proving crucial in the long run.

TSC needed a couple of fumble recoveries late in the game to preserve the victory.

PIONEER FACTS — Scott Santora, a sophomore fullback, continued to impress followers, leading the Pioneers with 73 yards rushing on 18 carries. Pat Harmon added 39 yards, while Leary had 31.



Tom Houle
... TD reception

WPC picked up 173 yards on the ground ... Leary's touchdown toss went for nine yards. Overall, he was 4-for-11 for 87 yards ... John Rivera (11 tackles), Brian Culligan (10 tackles), Steve Speidel (nine tackles), Andrew Faccone (eight tackles), Lee Linton (interception, seven tackles) and Tom Kochis (interception, sack) were defensive standouts ... The Pioneers kick off their home schedule Friday as Western Connecticut visits Wightman Field. Game-time is 8 p.m.

Lady Pioneers drop opener to Glassboro

BY CRAIG HALEY
SPORTS EDITOR

The WPC tennis team fell to Glassboro, 8-1, Saturday afternoon in Glassboro as both teams kicked off their fall 1988 seasons.

Using a balanced and overpowering attack, the Lady Profs easily handled the young Lady Pioneers, whose only victory was garnered by number-one seeded singles player Stacy Tankel.

Tankel, a junior, lost the first set of her match to Eva Cechnowski, 6-0, then battled back to win a tiebreaker in the second set, before winning the third and final set, 6-0.

"Stacy played real well," said WPC head coach Kyle Copeland. "It was good to see her come back after losing the first set."

"The rest of the girls were playing well. It was just that a couple of them had bad days."

Kristen Veleber, playing second singles for WPC, lost to Chris Mellon, 6-1, 6-2; Janice Kluxen lost a third-seeded singles match to Shari

Tennis

Schleifman, 6-1, 6-1; Dena DeMedici fell at fourth singles to Kelli Weeks, 6-0, 6-1; Briana Kwasnik was defeated at fifth singles by Nancy Logan, 6-2, 6-1; and Jeannette Potter dropped a sixth-seeded singles match to Denise Obre, 6-0, 6-0.

In doubles play, Schleifman/Lorraine Carton beat DeMedici/Kwasnik, 6-3, 6-3; Week/Dorothy Zeigler defeated Kluxen/Potter, 6-1, 6-1; and Cechnowski/Mellon dropped Tankel/Veleber, 8-2, in a pro-set style match.

"It's disappointing," said Copeland of the loss, "but I realize it was our first match. I just tell them (her players) to play their game. They've been working real well. I'm still optimistic."

The Lady Pioneers return to action this afternoon at Concordia, before opening their home schedule Thursday against Montclair. The game will be held at Wightman Courts at 3:30 p.m.

Pioneers Scores at a Glance

Football	Soccer	Volleyball	Field Hockey	Tennis
6-7 (Trenton State)	0-2 (Rutgers/Newark)	15-8, 13-15, 15-6 (Kings)	0-2 (Scranton)	1-8 (Glassboro)
Current Records:	Current Records:	Current Records:	Current Records:	Current Records:
0-2 (overall)	0-4-1 (overall)	4-15, 13-15, 6-15 (Concordia)	0-1-1 (overall)	0-1 (overall)
0-1 (NJAC)	0-1-1 (NJAC)	2-1 (overall)	0-0 (NJAC)	0-1 (NJAC)
		0-0 (NJAC)		